

Proposal presentation for production of an outdoor map

In response for an open tender from an art's organization



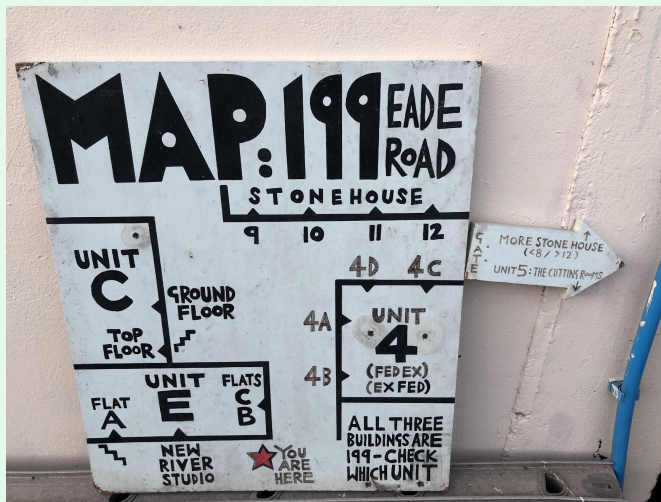
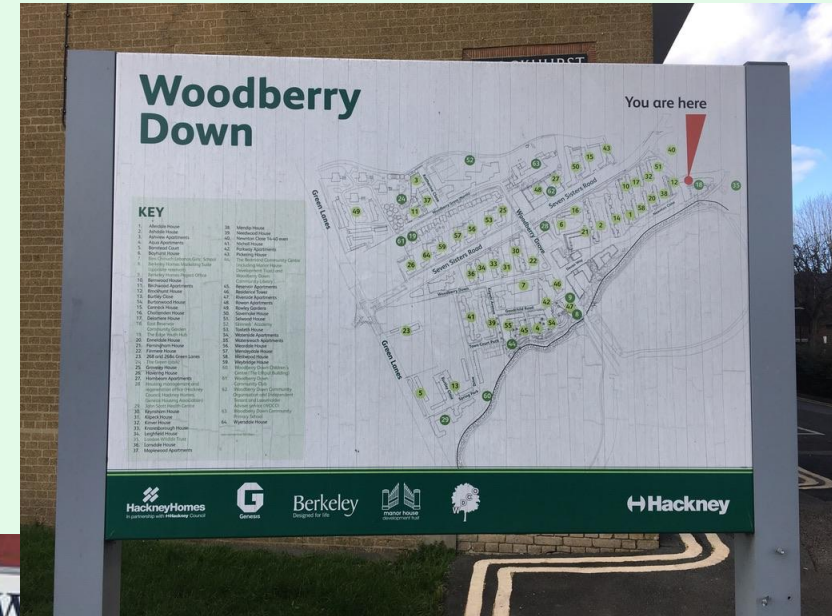
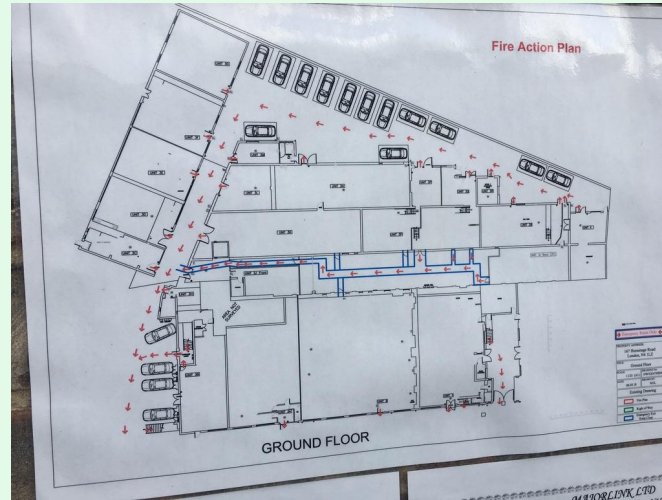
What is the objective of the new map?

“Three Rings for the Elven-kings under the sky,
Seven for the Dwarf-lords in their halls of stone,
Nine for Mortal Men, doomed to die,
One for the Dark Lord on his dark throne
In the Land of Mordor where the Shadows lie.
One Ring to rule them all, One Ring to find them,
One Ring to bring them all and in the darkness bind them.
In the Land of Mordor where the Shadows lie.”

— J.R.R. Tolkien



Collating information from local maps



Design Documentation (source: adobe xd ideas)

- Memorandum of understanding (MoU)
- Information about users (aka user persona)
- Product features
- Project deadlines
- Design decisions from team and stakeholders



Process of mapping

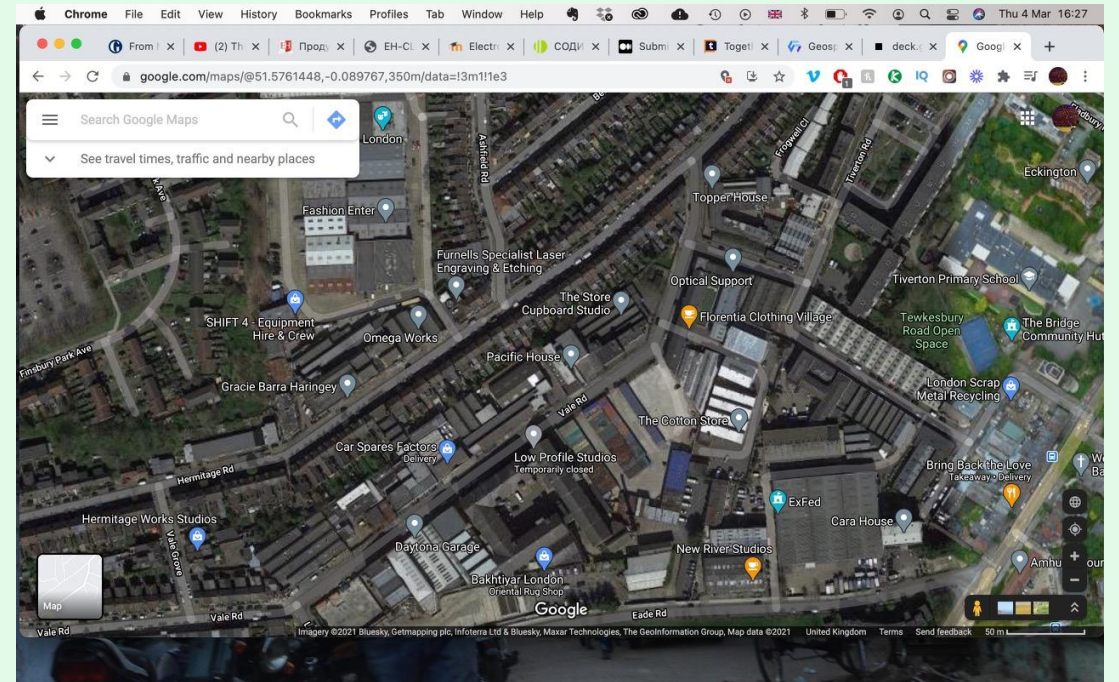
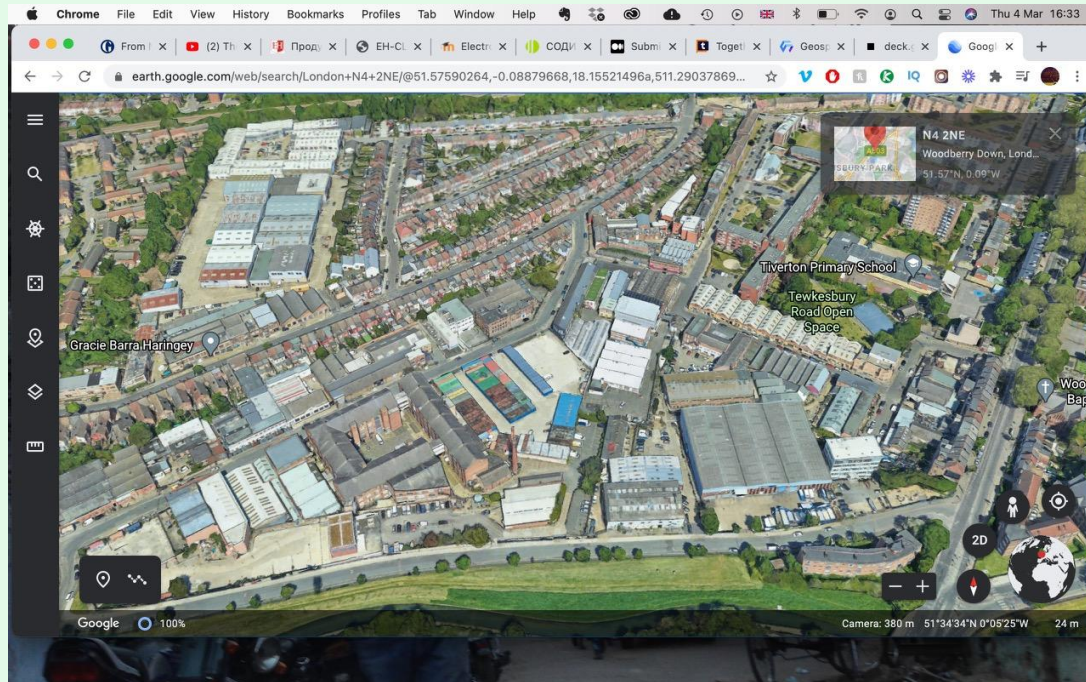
Testing an augmented 3D model by the Ordnance Survey on the spot at Eade rd



An example of illustration of buildings from Prianka Kumar's 'Hotel Dissent' series of illustrations



Google Visualization API



Using Satellite Technology



A screenshot of the CADMAPPER website. The top half shows a 3D perspective view of a residential area with buildings and a river. Below this is a browser window showing the website's interface. The page title is "Map near Harringay, England, GB". It includes a "DOWNLOAD (54.9 KB)" button and a "PREVIEW: 2D View" link. The 2D view shows a street map with building footprints. The website footer includes "Slide 8 of 9" and "English (United States)".

Geoinformatics learning curve

The screenshot shows a YouTube video player displaying a presentation slide. The slide title is "Что такое сетевой анализ и зачем он нужен?". It lists two points: "1. Представим объекты в виде сетей (дорожных, гидрографических, инженерных)." and "2. Используя мат. методы теории графов, решаем задачи:". Below the text is a map with a network of red lines and a small video inset of the presenter.

Мастер-классы по работе с геопространственными данными

90 watching now · Started streaming 61 minutes ago

Infoculture 995 subscribers

Top chat

Ilya Vouandin можно добавить фильтр, там есть поиск

Егор Ткачев. Очень полезно спасибо!

The screenshot shows a YouTube video player displaying a 3D terrain visualization. The terrain is represented by a grid of yellow and red blocks, indicating elevation. A sidebar on the left shows a legend for "Gold" and "Silver" with a color scale. A small video inset of the presenter is visible in the bottom right corner.

Мастер-классы по работе с геопространственными данными

96 watching now · Started streaming 35 minutes ago

Top chat

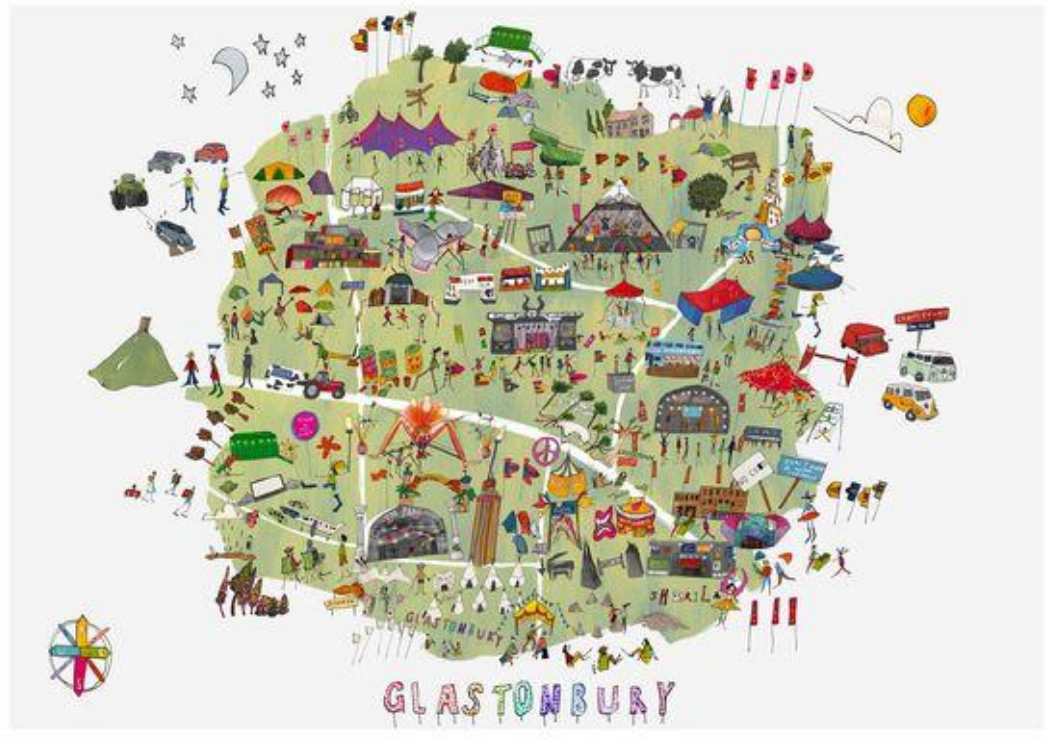
понял, но чем они отличаются, у гидрологов, кажется, даже больше функционала в

List of geoinformatics services

- <https://www.ordnancesurvey.co.uk/business-government/products/mastermap-building>
- <https://studio.unfolded.ai/home>
- <https://github.com/Pessimistress/isochronic-map-gpu>
- <https://www.google.com/maps/place/Harringay+Warehouse+District,+London/@51.5754922,-0.0927451,16z/data=!4m5!3m4!1s0x48761c74f2815a3b:0xcea7e70c1e869918!8m2!3d51.5757793!4d-0.089352?hl=en>
- https://blog.prusaprinters.org/how-to-print-maps-terrains-and-landscapes-on-a-3d-printer_29117/
- <https://cadmapper.com/pro/extracts/3bdcdc49-03c1-4a69-bfce-97d54497506e>
- <https://docs.mapbox.com/mapbox-gl-js/example/3d-buildings/>
- <https://hereeast.com/get-here/>
- <https://medium.com/airbnb-engineering/4-principles-for-making-experimentation-count-7a5f1a5268a>
- <https://www.esri.com/en-gb/store/arcgis-pro>

Seeking inspiration from Mass Events

Glastonbury

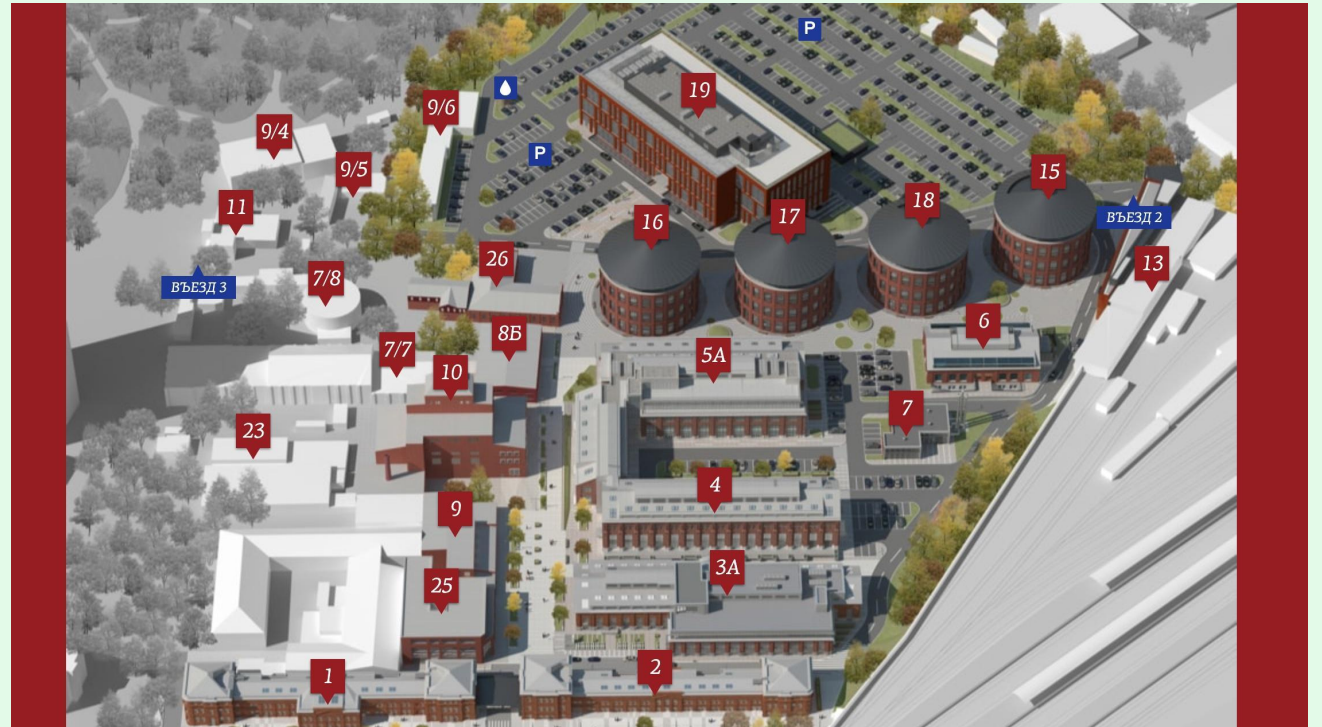


Boomtown



Expectations VS Reality

Analyzing best practices revealed an excellent example of scheme of a repurposed industrial area from Arma Factory in Moscow



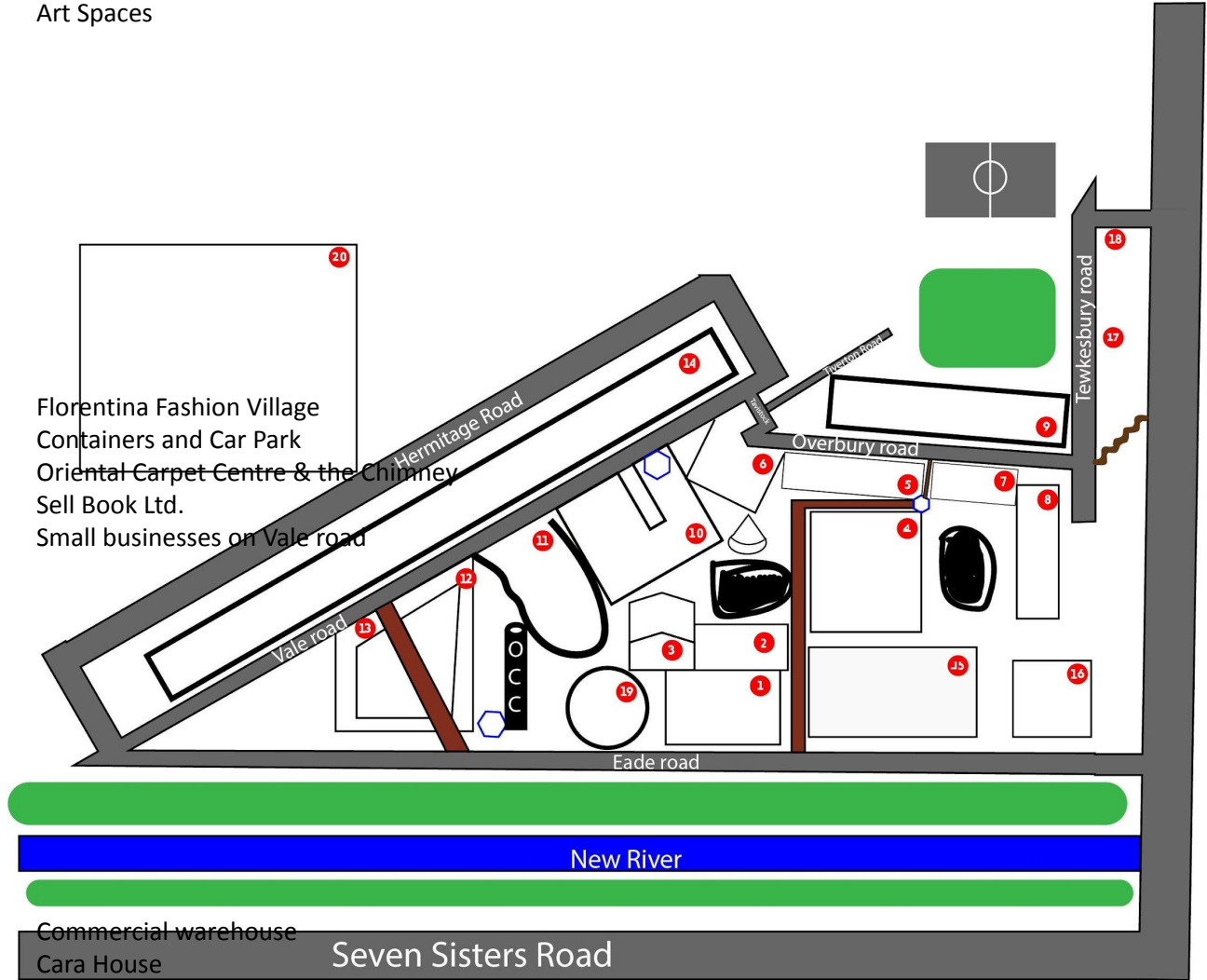
Creating Digital Prototype

Vector Map drawn from memory as a job seeker at one of the local businesses

1. New River Studios, Unit E 199 Eade Road
2. 195 Eade Road
3. 199 Eade Road Unit C
4. 199 Unit 4
5. Stonehouse
6. Tavistock road art spaces
7. The Cutting Rooms
8. Eade Road Design Centre
9. Art Spaces

10. Florentina Fashion Village
11. Containers and Car Park
12. Oriental Carpet Centre & the Chimney
13. Sell Book Ltd.
14. Small businesses on Vale road

15. Commercial warehouse
16. Cara House
17. Garages
18. Scrap Metal Yard



Choosing the style of illustration

Geoinformatics offer different styles of charting the map of the warehouse district in London



So do illustrators, CGI designers or architects.



Memorandum of Understanding (MoU) & quote

Overheads (Y*Z):

1. Two Labourers (£100-160pd each)
2. Ordnance Survey Data Expert (TBC)
3. Visual artists' fees (TBC)
4. Organizer's fee (TBC)
5. Location scout (3 days @£100pd)

Structural (X):

1. Updates & insurance
2. Cost of Print & materials (TBC by Berkeley homes)
3. Alternatively here East Stratford or Hackspace Wembley offer 3D printing and GreenLab has Laserscript 80w laser

Subtotal: £620+N+X



Compare and contrast

Catwalk place in 2013

Source:
<https://harringayonline.com/forum/topics/a-quick-whizz-around-harringay-s-warehouse-district>



Catwalk place in 2021





So far the regeneration has delive



18 NEW SHOPS



425 NEW TREES PLANTED



50 BIRD AND BAT BOXES



NEW PLAY FACILITIES IN SPRING PARK



2000TH NEW HOME DELIVERED IN 2020



2

BEECHFIELD RD

20

JET 97





Vicinity of the Woodberry Down

Urban decay in the N4 area



Billboard: 'Regeneration has delivered 18 new shops'

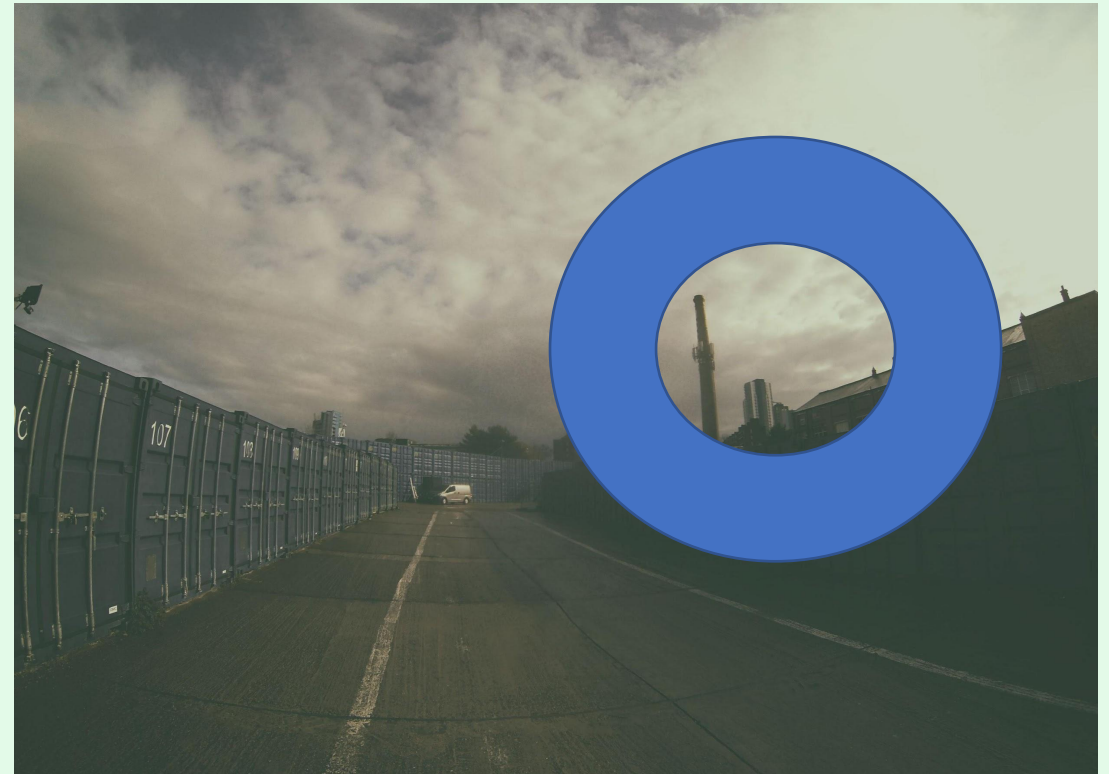


Vicinity of the Woodberry Down

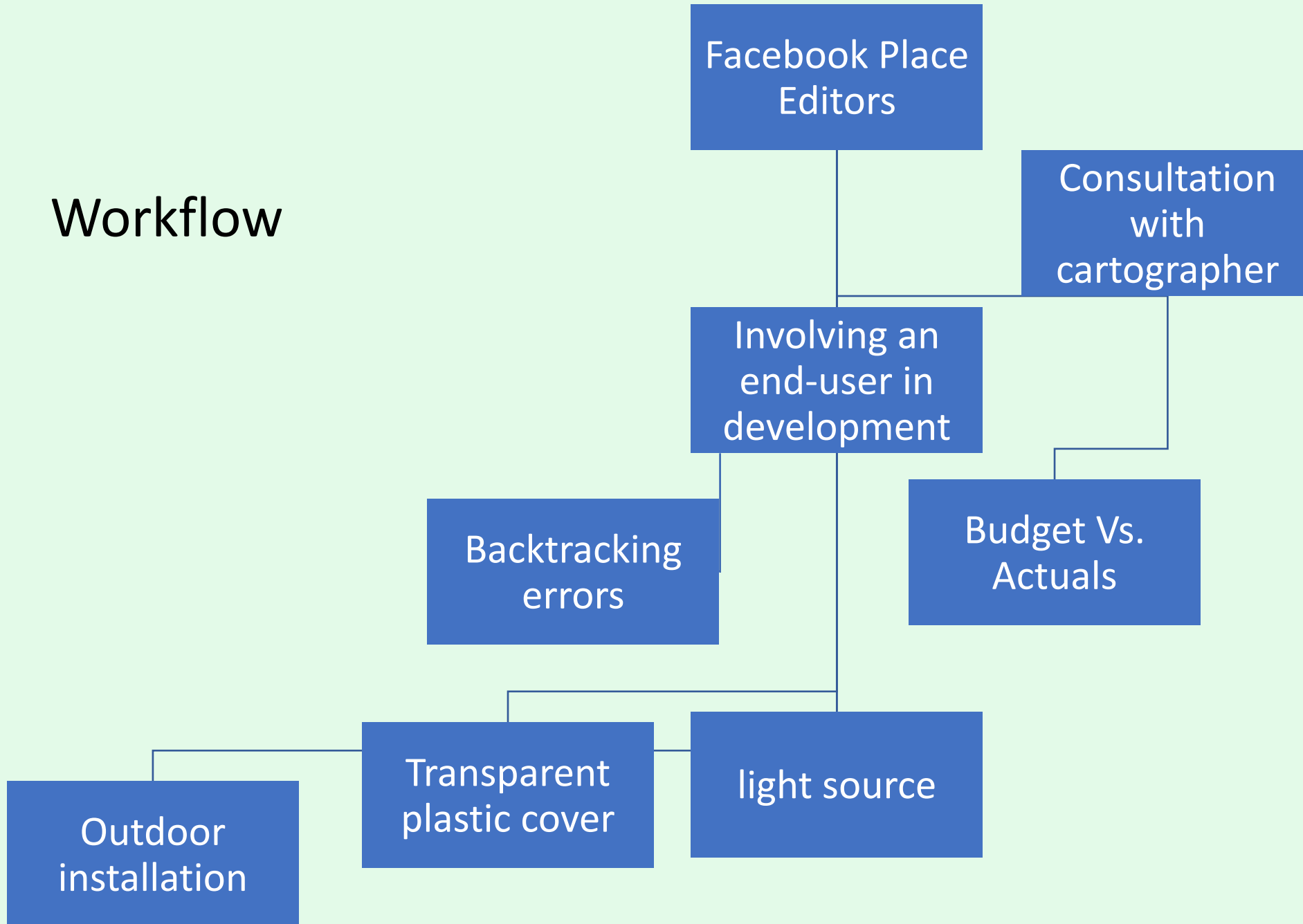
Protected geographical indication
(textiles)



Industry center since 1602 (New River
proposed)



Workflow



Organiser

Location scout, local resident
(N4) and psychogeography



We value your feedback!

Submit your thoughts & comments and questions using Spotify's brand new app via a link below:

- <https://anchor.fm/locationscoutlondonn4/message>

Explore trails with a location recce using a link below:

- <https://flic.kr/ps/3W87MQ>