

**Подкласс ПОЛИПОДИЕВЫЕ, или
Настоящие Папоротники
(POLYPODIAE)**

Порядок Полиподиевые (Polypodiales)





Anemia



Actinostachys



Сем. *глейхениевые* (Gleicheniaceae)



Сем. гименофилловые
(Hymenophyllaceae)



Trichomanes

Hymenophyllum



Сем. циатейные (Cyatheaceae)



Cyathea





Dicksonia





Сем. асплениевые (Aspleniaceae)



Asplenium

Blechnum



Phyllitis







Dryopteris



Athyrium rubripes



Gymnocarpium

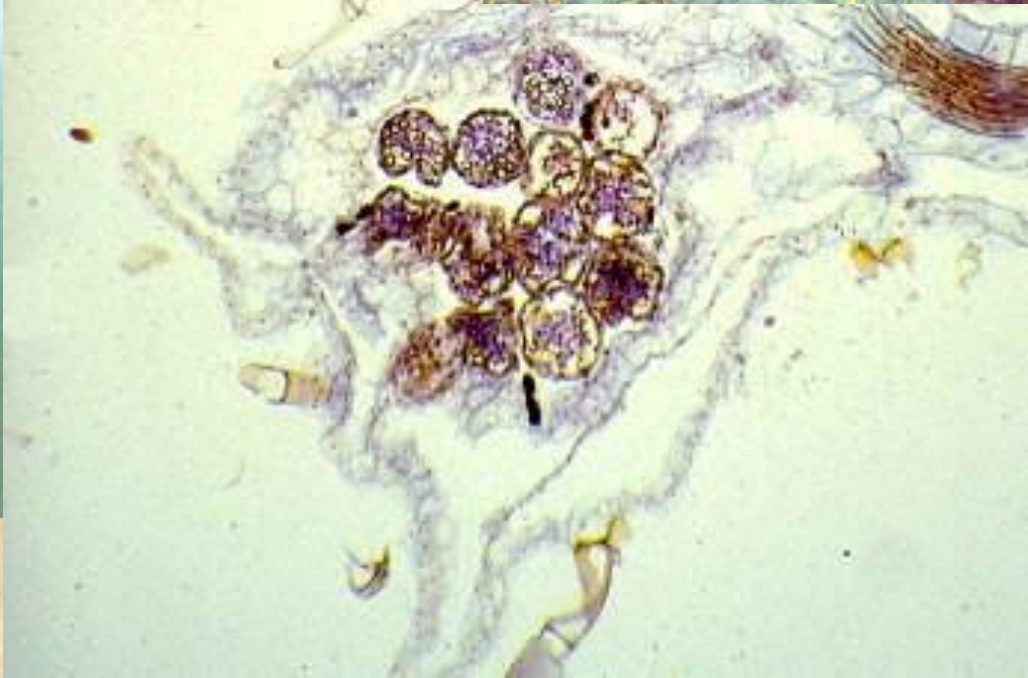
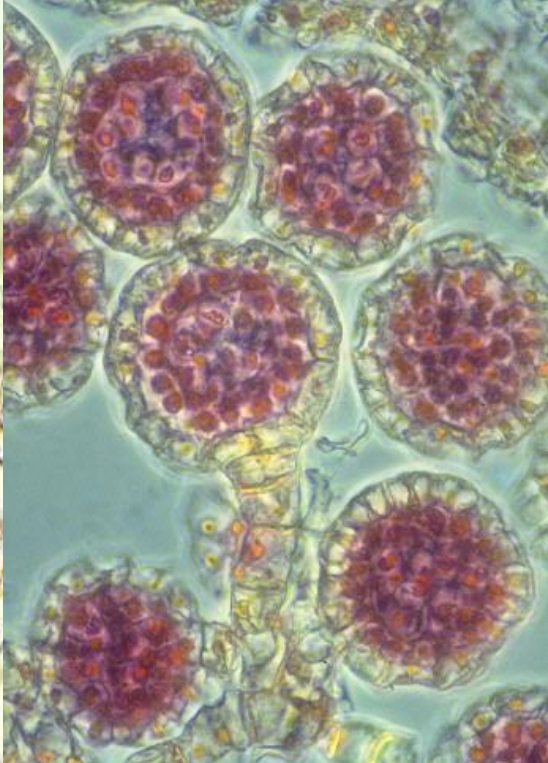


Matteuccia



The image shows a vast expanse of water covered with a thick layer of small, bright green, circular floating leaves. Each leaf has a distinct, wavy, ribbed texture. The leaves are packed closely together, creating a vibrant green surface. Some leaves show signs of aging or damage, appearing slightly darker or more yellowed. The water is dark and reflects the light, creating a shimmering effect. The overall scene is a natural, lush aquatic environment.

**Подкласс *Salviniiidae* -
Сальвиниевые**



Azolla

© W.P. Armstrong 2000



Подкласс *Marsileidae* - Марсилеиевые



Marsilea





Pilularia

© - josef. hlasek

www.hlasek.com

Pilularia globulifera 10727