

СВОЯ

Игра

$$\frac{1}{Q}$$
$$\frac{mv^2}{2} + pgh + p = \text{const}$$
$$v = \sqrt{\frac{8kT}{\pi m_0}}$$
$$F = \frac{1}{4\pi\epsilon_0} \frac{|q_1| |q_2|}{r^2}$$
$$F = \frac{1}{4\pi\epsilon_0} \frac{|q|}{r^2}$$
$$\sum_{i=1}^n \dots = \sum_{j=1}^m \dots$$
$$I = \frac{1}{\gamma} = qnv$$

$$f(v) = 4n \left(\frac{m_0 v^2}{2kT} \right)^{1/2} v^2 e^{-\frac{m_0 v^2}{2kT}}$$

Landmarks

100

200

300

400

500

Fairy tails

100

200

300

400

500

Food

100

200

300

400

500

Famous people

100

200

300

400

500

Grammer

100

200

300

400

500

Holidays

100

200

300

400

500

What's this? What do you know about it?

information



answer



The Big Ben is the most popular landmark of Great Britain. The official name of this building is Elizabeth Tower but we know it as Big Ben. It was built in 1859 and only after 2012 people started calling it 'Big Ben'. But Big Ben is the bell inside the tower. There are many places in London where you can buy a small souvenir in the shape of this place of interest.

Elizabeth Tower or “Big Ben”



What's this? What do you know about it?

information

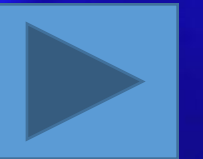


answer



This bridge was built in 1894. It is still used in London. It regulates a large part of great traffic of the capital. The pedestrian part is closed. People can't walk through it. From this bridge is a superb view to the city. You can also see a magnificent port which is one of the largest in the world.

Tower Bridge

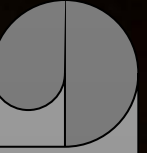


What's this? What do you know about it?

information



answer



London Eye is a beautiful landmark in London. It is situated on the bank of the river Thames. It can carry 800 people in each rotation. The height of the meter is 135, the diameter is 120. It is the highest wheel in Europe. More than 3.5 million tourists visit this attraction every years.

London Eye



What's this? What do you know about it?

information



answer

Westminster Abbey is located near the house of Parliament. It is a place where all British kings and queens are crowned. This place was founded by St. Peter 900 years ago. Every year this church attracts millions of people. Tourists come here to see Abbey and visit its famous part called Poet's corner.



Westminster Abbey



What's this? What do you know about it?

information



answer



Buckingham Palace is one the most exciting place in London. Tourists like visiting it very much. The palace is very old. It was built in 1705. Now it is the official residence of British monarchy. There are more than 600 rooms in this building. Every year near 50 hundreds people are invited to this residence for parties and banquets. Many tourists come here because they want to see Queen Victoria Memorial. It is very beautiful.

Buckingham Palace



What's this? Who wrote this?



answer

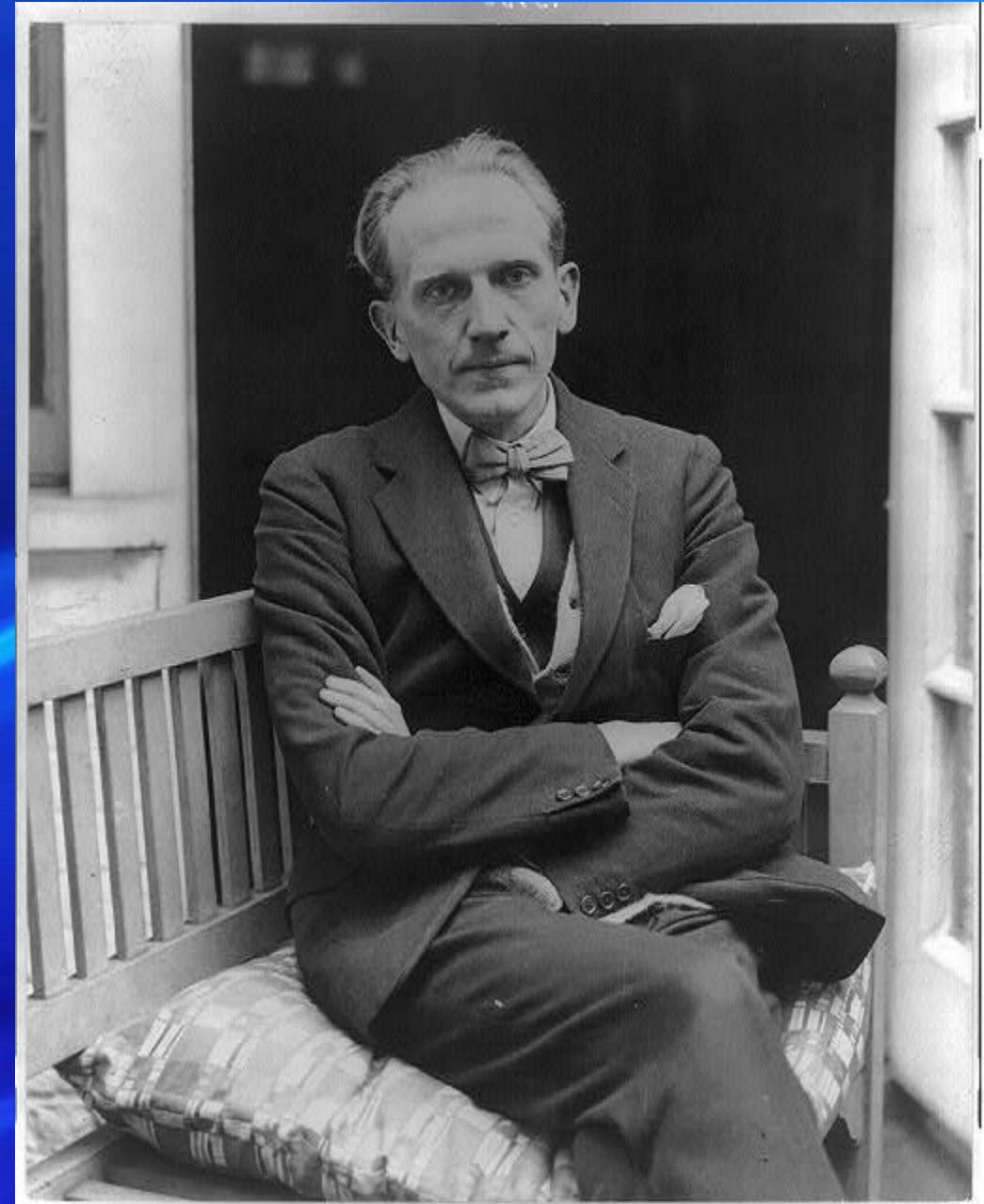


Alan Alexander
Milne

“Winnie-the-Pooh

”

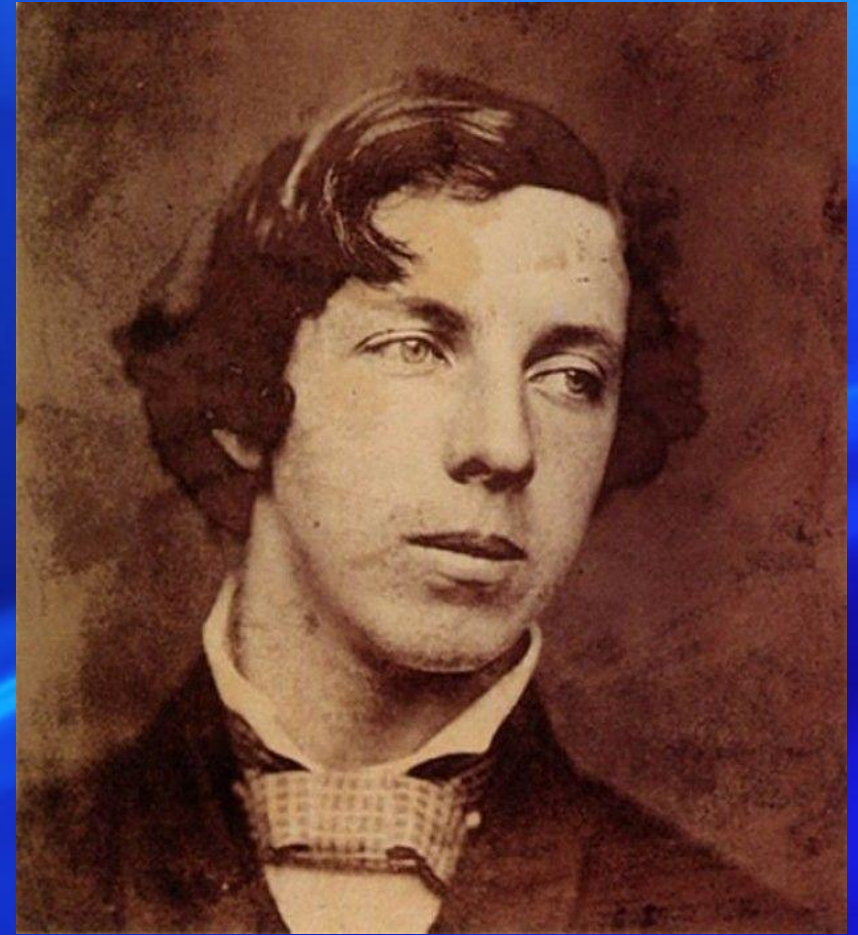
—



What's this? Who wrote this?

The story tells us about a girl who gets into a wonderful magical world. Where she meets a lot of interesting characters: and Cheshire cat, and mad Hatter, and the Queen of cards.

answer



Lewis Carroll

"Alice's adventures in wonderland"

What's this? Who wrote this?



[answer](#)



Sir Joseph
Rudyard Kipling

“The Jungle
Book”



What's this? Who wrote this?

THE FOLLOWING **PREVIEW** HAS BEEN APPROVED FOR
APPROPRIATE AUDIENCES
BY THE MOTION PICTURE ASSOCIATION OF AMERICA, INC.

THE FILM ADVERTISED HAS BEEN RATED



www.filmratings.com

www.mpa.org

[answer](#)

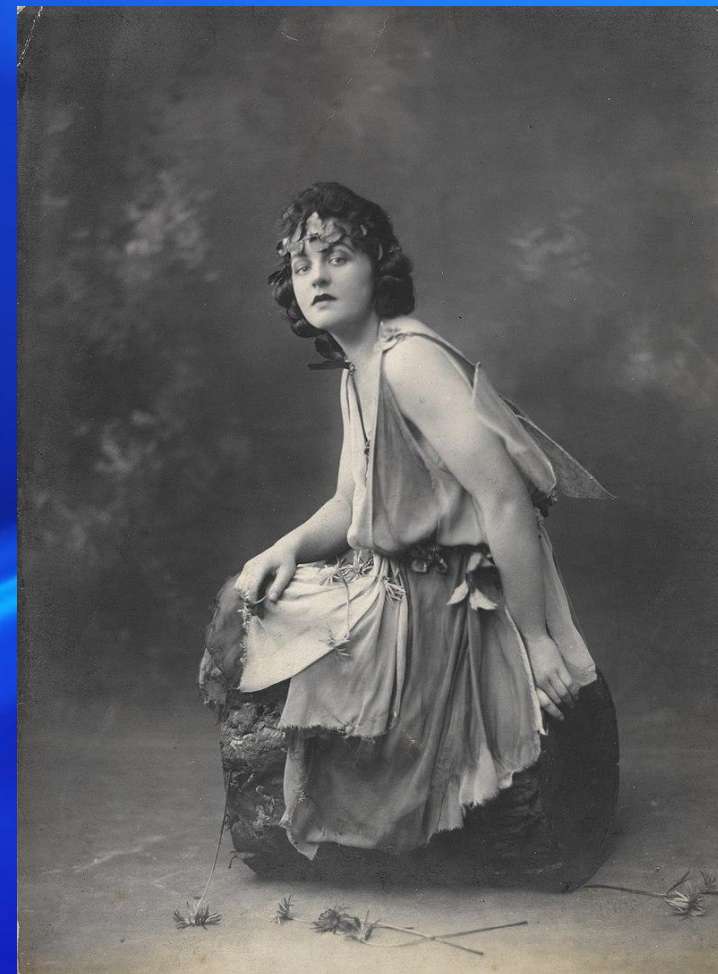


James Matthew Barrie
"Peter Pan"

What's this? Who wrote this?

*It is the tale of a magical
nanny who appears in the
house of the Banks family.
She easily copes with the
education of restless
children.*

answer



Pamela Lyndon Travers
“Mary Poppins”

Answer the question.

**What do the English eat for
Breakfast?**

answer



bacon, sausage, eggs and tea

Answer the question.

**What is traditional food in
Britain?**

answer



Fish and chips

Answer the question.

**What do Britons eat
for Christmas?**

answer

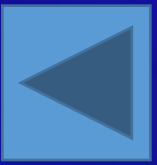


turkey

Answer the question.

What is the most famous Christmas sweet in Britain?

answer



candycane

Answer the question.

What time do the English drink tea?

answer



At 5 o'clock.

It is believed that Anna Russell, Duchess of Bedford, introduced the tradition of drinking tea at five o'clock. In the XVIII century, dinner in England began to be served later and later, and by the beginning of the XIX dinner time was at 7-8 PM. Lunch, introduced between Breakfast and lunch, was a light snack, so people felt hungry during the day. So the British acquired their famous tradition of five-hour tea, which was not too expensive way to spend time with friends.

Who is it? What's he (she) famous for?



answer



Queen Elizabeth II

Who is it? What's he (she) famous for?



answer



Benedict
Cumberbatch

Who is it? What's he (she) famous for?



answer



the Beatles

Who is it? What's he (she) famous for?

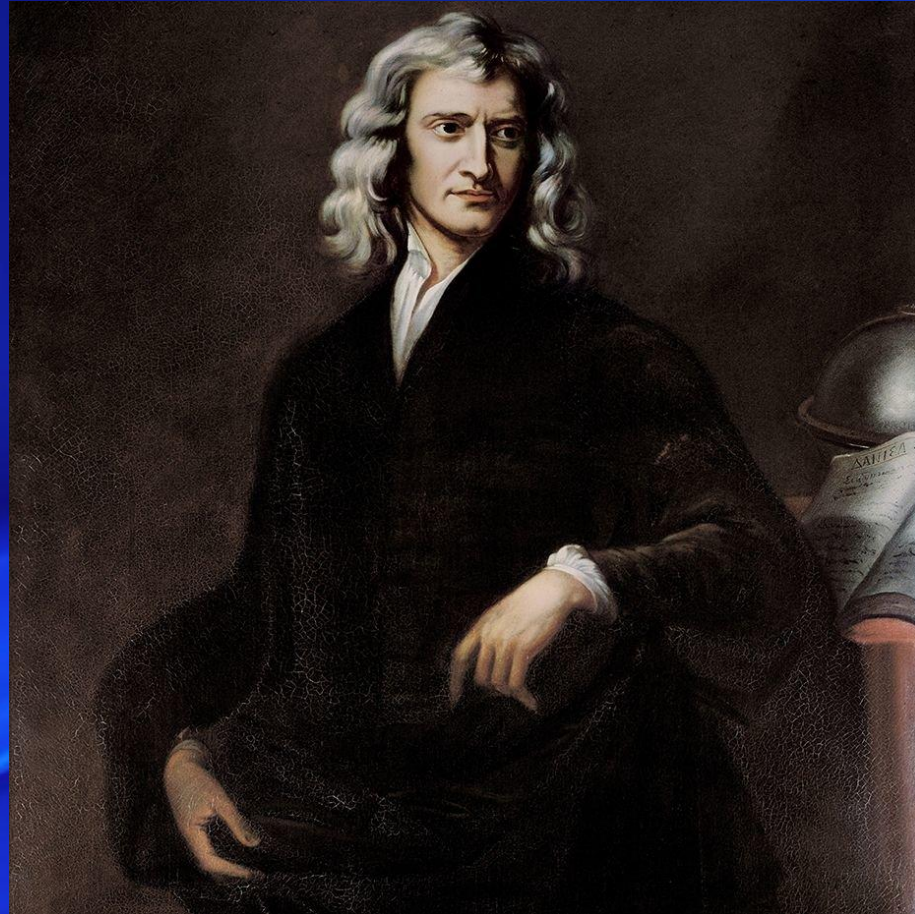


answer



William Shakespeare

Who is it? What's he (she) famous for?



answer



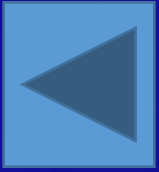
Isaac Newton



Write the answer

- 1) They _____ football every day. (to play)
- 2) She _____ emails today. (not / to write)
- 3) _____ you _____ English? (to speak)
- 4) My mother _____ fish. (not / to like)
- 5) _____ Ann _____ any friends? (to have)
- 6) His brother _____ in an office. (to work)

- **1) They play football every day. (to play)**
- 2) She doesn't write emails today. (not / to write)**
- 3) Do you speak English? (to speak)**
- 4) My mother doesn't like fish. (not / to like)**
- 5) Does Ann have any friends? (to have)**
- 6) His brother works in an office. (to work)**



Write the answer

- *Do you watch the news?*
- *Does your mum like horror films?*
- *Do your parents like comedies?*
- *Does your friend like nature programmes?*
- *Does your teacher like music programmes?*



Write the answer

- Frank and Martin ... watching a TV show now.
- Kelly ... washing her dress in the bathroom.
- Our teacher ... writing something on the blackboard.
- It ... getting dark.
- The birds ... singing sweetly in the garden.
- I ... preparing for my report at the moment.



- Frank and Martin are watching a TV show now.
- Kelly is washing her dress in the bathroom.
- Our teacher is writing something on the blackboard.
- It is getting dark.
- The birds are singing sweetly in the garden.
- I am preparing for my report at the moment.





Write the answer

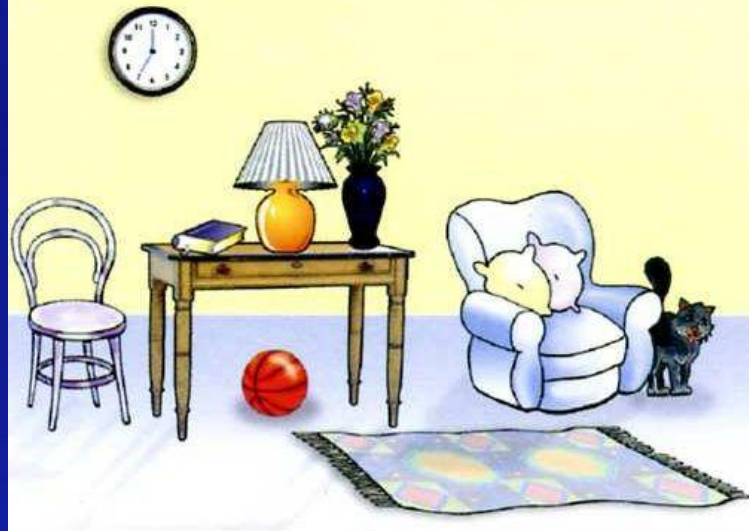
- gathering/forest/We/the/mushrooms/are/in.
- horses/are/The/not/now/boys/riding/the.
- breakfast/sister/now/your/having/Is?
- whitewashing/garden/the/They/in/trees/are/
the.
- me/waiting/Are/for/you?



- We are gathering mushrooms in the forest.
- The boys are not riding the horses now.
- Is your sister having breakfast now?
- They are whitewashing the trees in the garden.
- Are you waiting for me?



Write the answer



- 1) The clock isthe wall.
- 2) The ball isthe table.
- 3) The cat isthe armchair.
- 4) The table isthe armchair.
- 5) The carpet isthe floor.
- 6) The lamp isthe table.
- 7) The flowers arethe vase.
- 8) The table isthe chair
and the armchair.



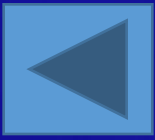
What's this?





What's this?





What's this?



What's this?





What's this?

