

The background is a dark blue gradient with a subtle pattern of white dots. On the left side, there are several overlapping circular elements. A large, semi-transparent scale is visible, with numbers ranging from 140 to 260 in increments of 10. The scale is oriented vertically. There are also several circular diagrams with arrows, suggesting a process or cycle. The overall aesthetic is technical and modern.

АРХИТЕКТУРА И ЭВОЛЮЦИЯ СЕТЕВОГО ОБОРУДОВАНИЯ ДЛЯ ПК

СЕТЕВЫЕ ОБОРУДОВАНИЯ

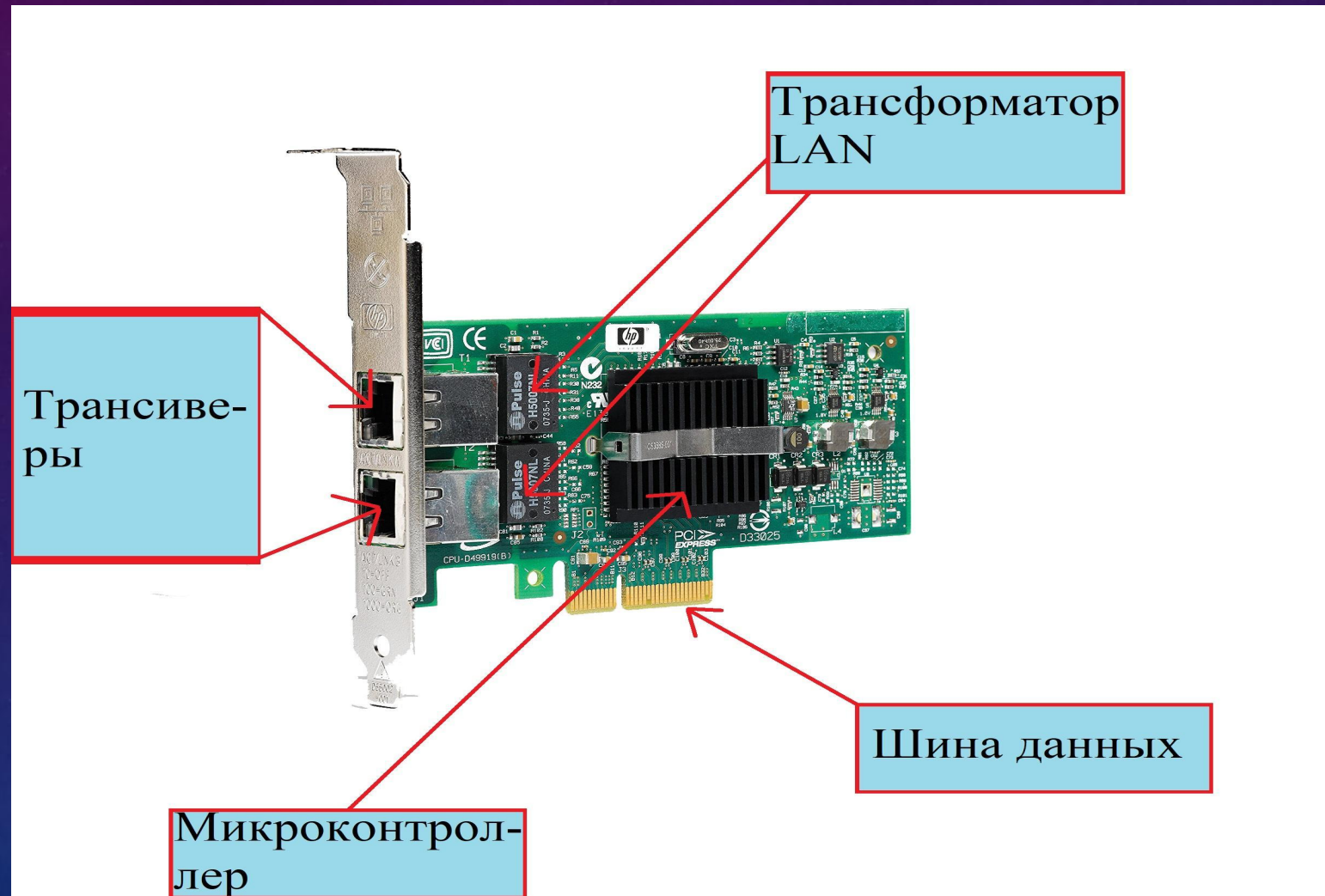
ИСТОРИЯ



РАЗНОВИДНОСТИ ОБОРУДОВАНИЯ

The background is a dark blue gradient with a subtle starry field. On the right side, there are several technical diagrams. One is a large circular gauge with a scale from 0 to 210 and a needle pointing to approximately 180. Below it is a smaller circular diagram with concentric circles and arrows. In the bottom left corner, there is another circular diagram with a dashed arrow pointing counter-clockwise.

ВНУТРЕННЯЯ СЕТЕВАЯ ПЛАТА



ВНЕШНЯЯ СЕТЕВАЯ ПЛАТА



КОНЦЕНТРАТОР



РЕПИТЕР, ПОВТОРИТЕЛЬ



MOCT



КОММУТАТОР (СВИТЧ)



МАРШРУТИЗАТОР (РОУТЕР)



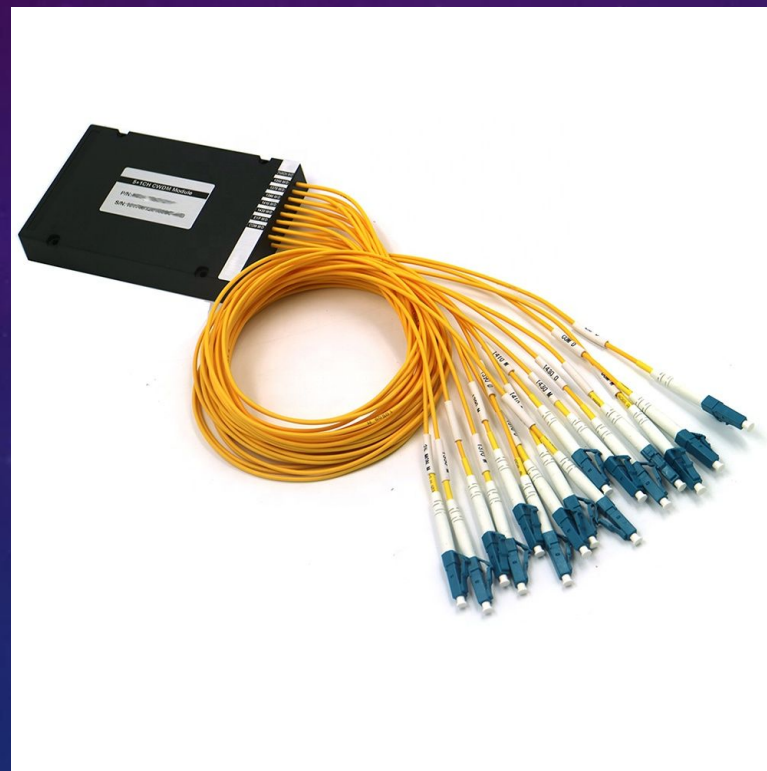
МЕДИАКОНВЕРТЕР



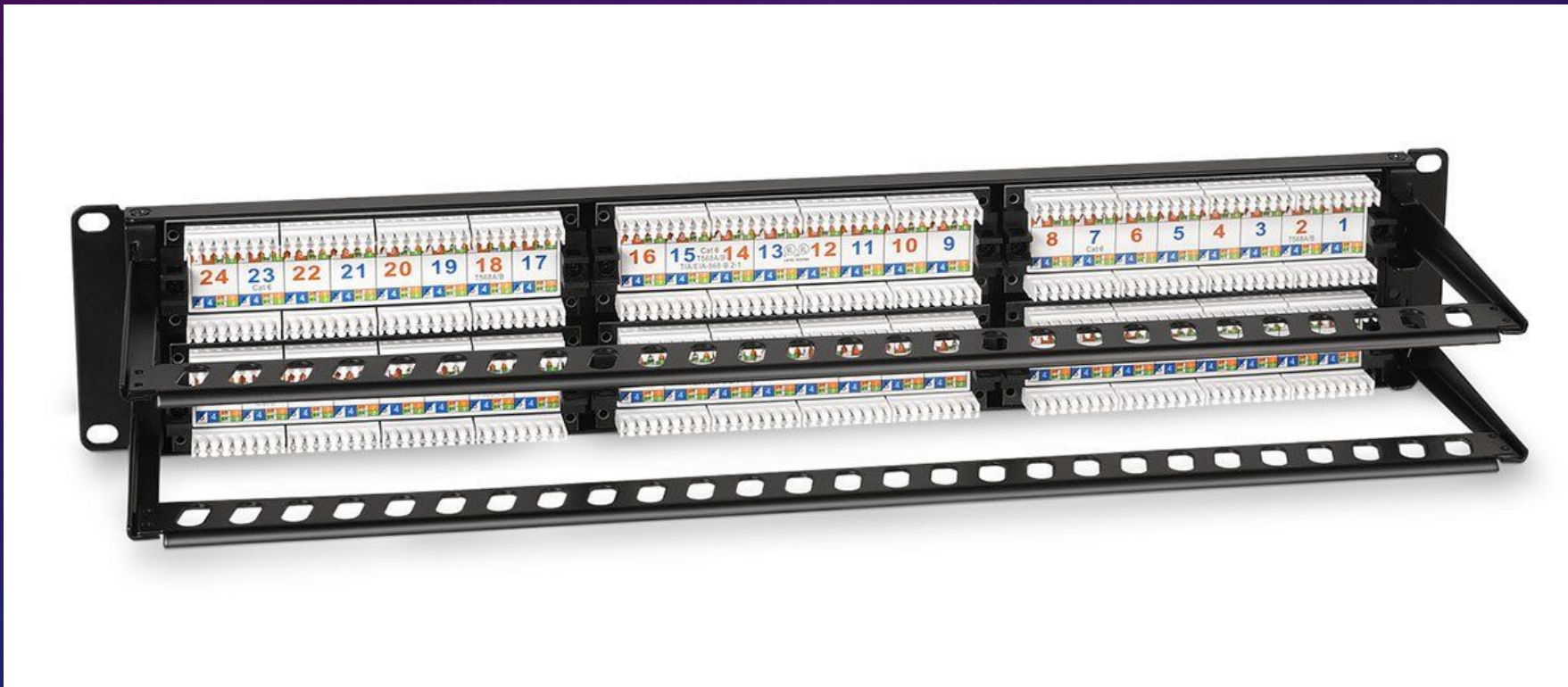
СЕТЕВОЙ ТРАНСИВЕР SFP



ПАССИВНОЕ СЕТЕВОЕ ОБОРУДОВАНИЕ



КОММУТАЦИОННАЯ ПАНЕЛЬ



БУДУЩЕЕ

A 3D visualization of a grid representing a future or a path. The grid is composed of white lines on a blue background, receding into the distance. Several thick, colored lines (red, yellow, blue, black) run through the grid, suggesting different paths or trajectories. The background is a gradient of purple and blue, with a greenish glow on the left side.