

Insight Link Starter

Book 3

Vocabulary PPT

Chapter 1 . River

Lesson 1

The Nile River













1. Which picture shows a water *flow*?

a.



b.



2. What does the girl do to remember *important* things?



She writes them in a notebook.

3. What does the family do at *home*?



They watch TV at home.

4. Where can you get *fresh* milk?



You can get it from a (park / **farm**).

5. What can you do with *salty* soup to make it taste better?



You can add more water and boil it.

6. Which picture shows a *crop*?

a.



b.



Chapter 1 . River

Lesson 2

Strauss's "The Blue Danube" Waltz













1. What does the *composer* do?



He (sells / makes) music.

2. Which place is there a *war* in?

a.



b.



3. Which family looks *joyful*?

a.



b.



4. How does the girl *cheer* her friend *up*?



She tries to make her friend (laugh / mad).

5. What does the man do to the *beat* of the music?



He (plays / carries) the drums.

6. Where are the people *dancing*?



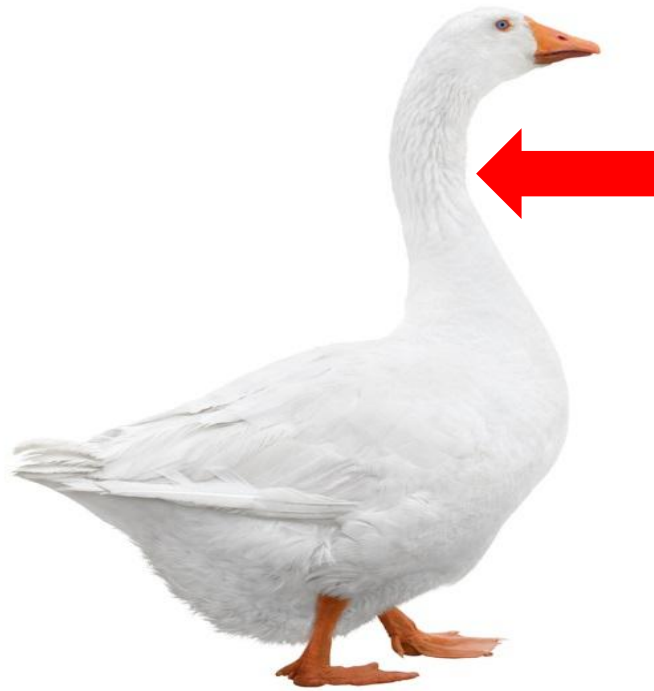
They are dancing on the beach.

Chapter 1 . River

Lesson 3

The Heron: The River Bird













1. Which person sits *near* a sofa?

a.

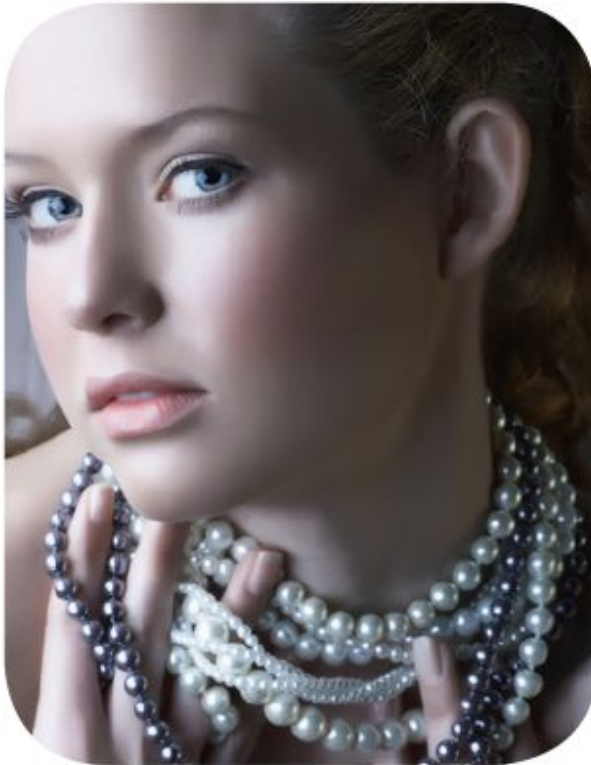


b.



2. Which girl wears something on her *neck*?

a.



b.



3. Where does the family *swim*?



They swim in a(n) pool.

4. What does the cat *catch*?



The cat catches a(n) mouse.

5. Which animal is the *prey* in this picture, the eagle or the fish?



The fish is the prey.

6. What does the *fisher* do?



He (throws / runs) a net into the sea.

Chapter 1 . River

Lesson 4

Captain Sullenberger's Hudson Landing

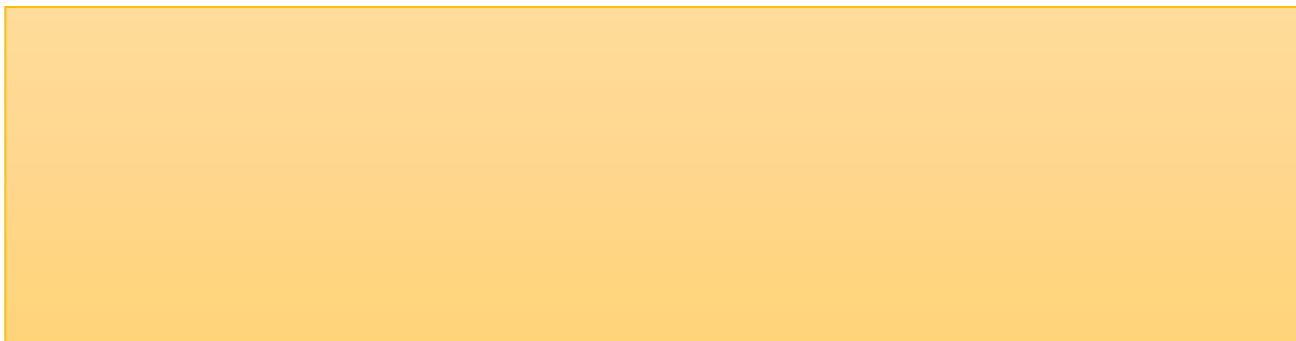












1. What does the *pilot* fly?



She flies a(n) airplane.

2. Which car has some *damage*?

a.



b.



3. What *choice* does the couple make?



They make a choice to buy the
bread on the shelf.

4. Which shows an airplane *land*?

a.



b.



5. What does the *passenger* do in the train?



He sleeps in the train.

6. What does the firefighter do to *save* lives?



He or she sprays water on a fire to put it out.