



# WGSN ТРЕНДЫ

<https://www.wgsn.com/ru/>

## Design Development



Tailoring A/W 19/20

### Prince Of Wales Check 6x4 DB Blazer

This key item has a neater line than the pinstriped peak lapel DB. A shorter length, higher break and more buttons on show create a less retro interpretation.

**Fabric & detail:** keep reverse lean and notches higher up the body

**Market:** young men

**Drop:** autumn transitional

## Design Development



Edward Crutchley



Michael & Christopher Jones



The Fashionista



Louis Vuitton



Amal



Tailoring A/W 19/20

### Slouchy SB Suit

Making tailoring accessible to a youth market used to roomier, sportier styles, this lightweight, voluminous silhouette makes sense and gains gravitas.

**Fabric & detail:** super-fine worsteds and synthetic/natural blends create drape

**Market:** young men

**Drop:** autumn transitional



L'Officiel Hommes España



Tailoring A/W 19/20

## Long-Line Jacket

Coats that match trousers are a rising trend; one that WGSN expects to be on the agenda for A/W 19/20.

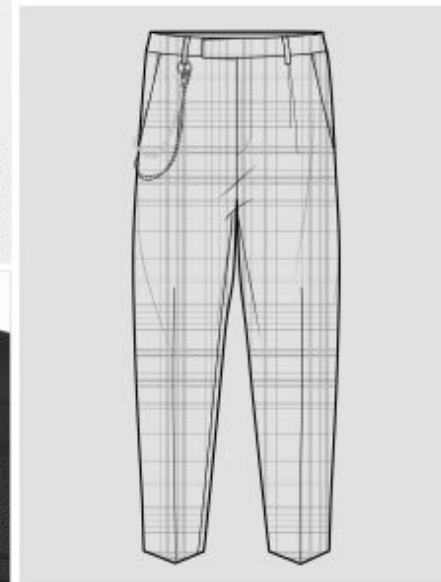
**Fabric & detail:** tweeds and plaids are key, with contrast top collar pieces also seen

**Market:** men and young men

**Drop:** winter



## Design Development



Trousers A/W 19/20

### Keychain Trousers

Belt loops and pocket designs are important for this piece which centres around the chain detail. The trousers are tapered at the hem and wider across the hip.

**Fabric & detail:** wool blends in crepe or finer finishes are important

**Market:** young men

**Drop:** mid-autumn

## Design Development



Trousers A/W 19/20

### Deep Pleat Detail Trousers

Smart trousers with a high waist and prominent pleat details lead the charge of formal pieces infiltrating casual looks.

**Fabric & detail:** cottons work well, but are replaced by wool blends later in A/W 19/20

**Market:** men and young men

**Drop:** autumn transitional

## Design Development



Knitwear A/W 19/20

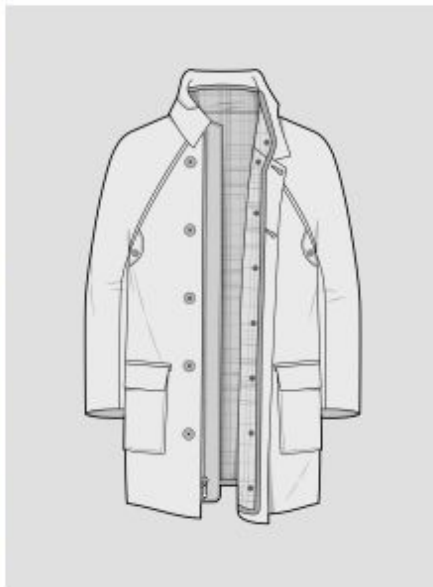
### Relaxed Roll-Neck

This versatile item has a **refined** luxury in line with the Purpose Full trend, and showcased widely on the A/W 18/19 catwalks.

**Fabric & Yarn:** with a relaxed fit, this 12gg roll-neck is knitted in a soft wool yarn in an all-over check

**Drop:** autumn transitional

## Design Development



Jackets & Outerwear A/W 19/20

### Check-Liner Jacket

Traditional three-quarter-length jackets are enlivened by cheeky takes on inner beauty. Removable liners and reversible functionality offer unparalleled versatility.

**Fabric & detail:** drill cotton for the traditionalist; synthetic for the modernist

**Market:** men and young men

**Drop:** mid-autumn



## Design Development



Cut & Sew A/W 19/20

### Photo Print Baggy Tee

This style is a vehicle for artistic photoprints and fashion pop colours as well as monochrome. It is longer and less boxy than the previous tee, with shorter sleeves.

**Fabric & detail:** a fine knit in 160-200gm with a clean finish works well

**Market:** young men

**Drop:** autumn transitional

## Design Development



Shirts & Woven Tops A/W 19/20

### Bluff Detail Shirt

For a clean, modern feel, remove extraneous stitch detail and go bluff. Hidden plackets and minimal detail sit well with new trouser shapes.

**Fabric & detail:** smooth, compact yarns have a sophisticated feel

**Market:** men and young men

**Drop:** autumn

## Design Development



Tailoring A/W 19/20

### 1990s High Break Shirt Collar Blazer

The more directional brands, designers and celebrities are getting into a very 1990s silhouette. Take the break higher up the body and opt for at least three buttons.

**Fabric & detail:** Structured fabrics work best here, but can still be fine and lustrous

**Market:** men and young men

**Drop:** mid-autumn

A person is shown from the back, looking out over a body of water. They are wearing a dark jacket and a thick, dark scarf. The background is split vertically: the left side is a dark, overcast sky and water, while the right side is a bright, hazy, golden-brown sky and water. The text is overlaid in the center.

# АНАЛИТИКА С ПОКАЗОВ

## **SS19**











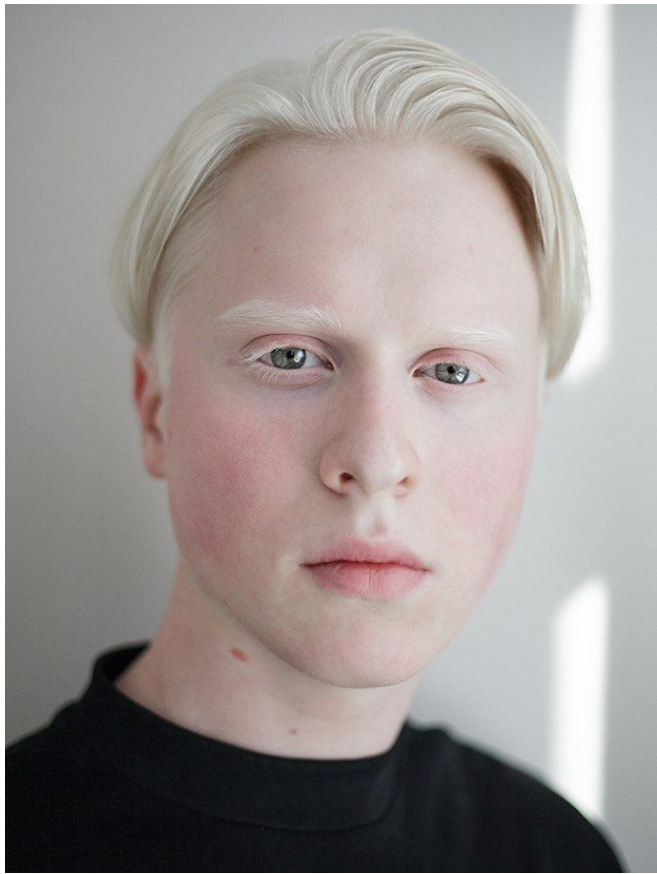












примерный портрет героя,  
хочется по-мужественнее, но у  
нас размытый гендер





А это самое приятное - Альберт-док в Ливерпуле с апельсиновыми колоннами



улучки ливерпуля. весна будет  
мрачной, короче)