

## 6 UPPER LIMB

### Topographic Anatomy

Plate 398

398 Upper Limb: Surface Anatomy

### Cutaneous Anatomy

Plates 399–403

399 Dermatomes of Upper Limb

400 Cutaneous Innervation of Upper Limb

401 Cutaneous Nerves and Superficial Veins of Shoulder and Arm

402 Cutaneous Nerves and Superficial Veins of Forearm

403 Lymph Vessels and Nodes of Upper Limb

### Shoulder and Axilla

Plates 404–416

404 Clavicle and Sternoclavicular Joint

405 Humerus and Scapula: Anterior Views

406 Humerus and Scapula: Posterior View

407 Shoulder: Anteroposterior Radiograph

408 Shoulder (Glenohumeral Joint)

409 Muscles of Shoulder

410 Axilla: Posterior Wall

411 Muscles of Rotator Cuff

412 Pectoral, Clavipectoral, and Axillary Fasciae

413 Scapulothoracic and Scapulohumeral Dissection

414 Axillary Artery and Anastomoses around Scapula

## UPPER LIMB

- 415 Axilla (Dissection): Anterior View
- 416 Brachial Plexus: Schema

### Arm

Plates 417–421

- 417 Muscles of Arm: Anterior Views
- 418 Muscles of Arm: Posterior Views
- 419 Brachial Artery in Situ
- 420 Arteries of Arm and Proximal Forearm
- 421 Arm: Serial Cross Sections

### Elbow and Forearm

Plates 422–438

- 422 Bones of Elbow
- 423 Elbow: Radiographs
- 424 Ligaments of Elbow
- 425 Bones of Forearm
- 426 Individual Muscles of Forearm: Rotators of Radius
- 427 Individual Muscles of Forearm: Extensors of Wrist and Digits
- 428 Individual Muscles of Forearm: Flexors of Wrist
- 429 Individual Muscles of Forearm: Flexors of Digits
- 430 Muscles of Forearm (Superficial Layer): Posterior View
- 431 Muscles of Forearm (Deep Layer): Posterior View
- 432 Muscles of Forearm (Superficial Layer): Anterior View
- 433 Muscles of Forearm (Intermediate Layer): Anterior View
- 434 Muscles of Forearm (Deep Layer): Anterior View
- 435 Arteries of Forearm
- 436 Forearm: Serial Cross Sections, Anterior View
- 437 Attachments of Muscles of Forearm: Anterior View
- 438 Attachments of Muscles of Forearm: Posterior View

### Wrist and Hand

Plates 439–458

- 439 Carpal Bones
- 440 Movements of Wrist
- 441 Ligaments of Wrist
- 442 Ligaments of Wrist (continued)
- 443 Bones of Wrist and Hand
- 444 Wrist and Hand: Radiographs
- 445 Metacarpophalangeal and Interphalangeal Ligaments
- 446 Wrist and Hand: Superficial Palmar Dissections
- 447 Wrist and Hand: Deeper Palmar Dissections
- 448 Lumbrical Muscles and Bursae, Spaces, and Sheaths: Schema
- 449 Flexor Tendons, Arteries, and Nerves at Wrist
- 450 Bursae, Spaces, and Tendon Sheaths of Hand
- 451 Flexor and Extensor Tendons in Fingers
- 452 Intrinsic Muscles of Hand
- 453 Arteries and Nerves of Hand: Palmar Views
- 454 Wrist and Hand: Superficial Radial Dissection
- 455 Wrist and Hand: Superficial Dorsal Dissection
- 456 Wrist and Hand: Deep Dorsal Dissection
- 457 Extensor Tendons at Wrist
- 458 Fingers

### Neurovasculature

Plates 459–466

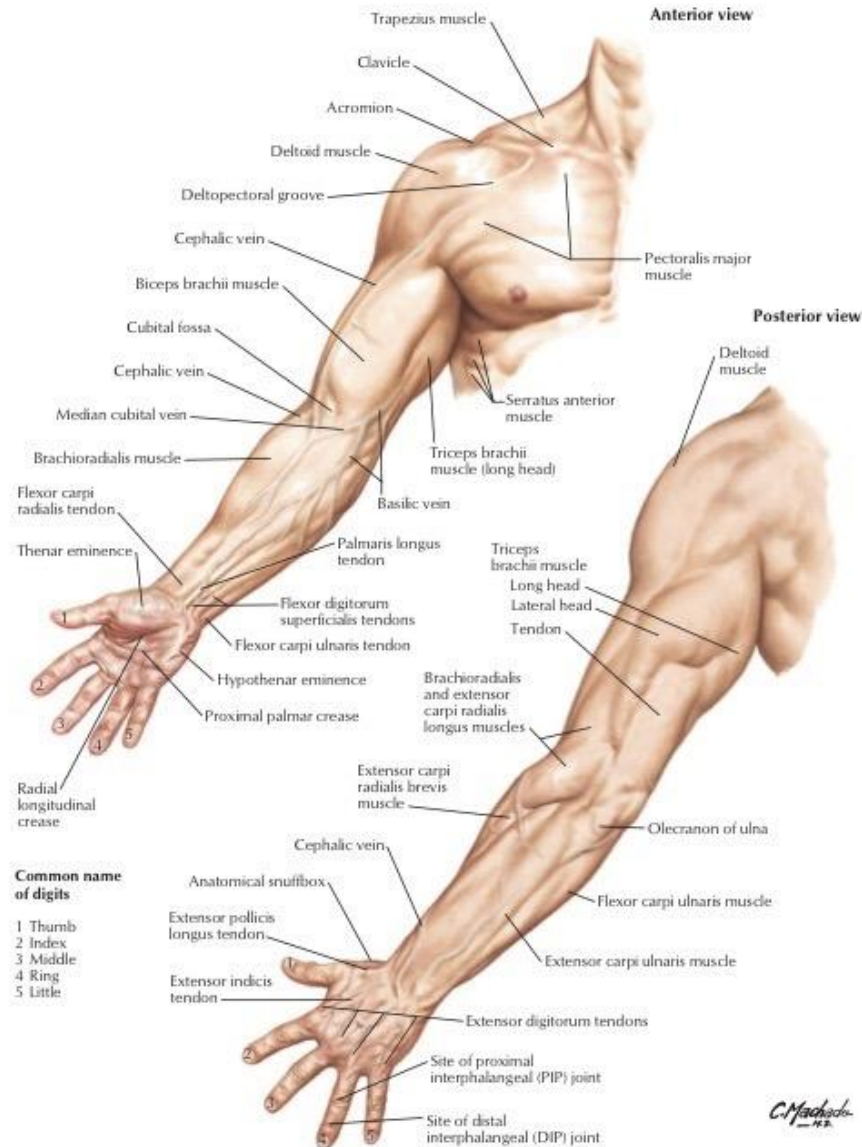
- 459 Cutaneous Innervation of Wrist and Hand
- 460 Arteries and Nerves of Upper Limb
- 461 Nerves of Upper Limb
- 462 Musculocutaneous Nerve
- 463 Median Nerve
- 464 Ulnar Nerve
- 465 Radial Nerve in Arm and Nerves of Posterior Shoulder
- 466 Radial Nerve in Forearm

### Regional Scans

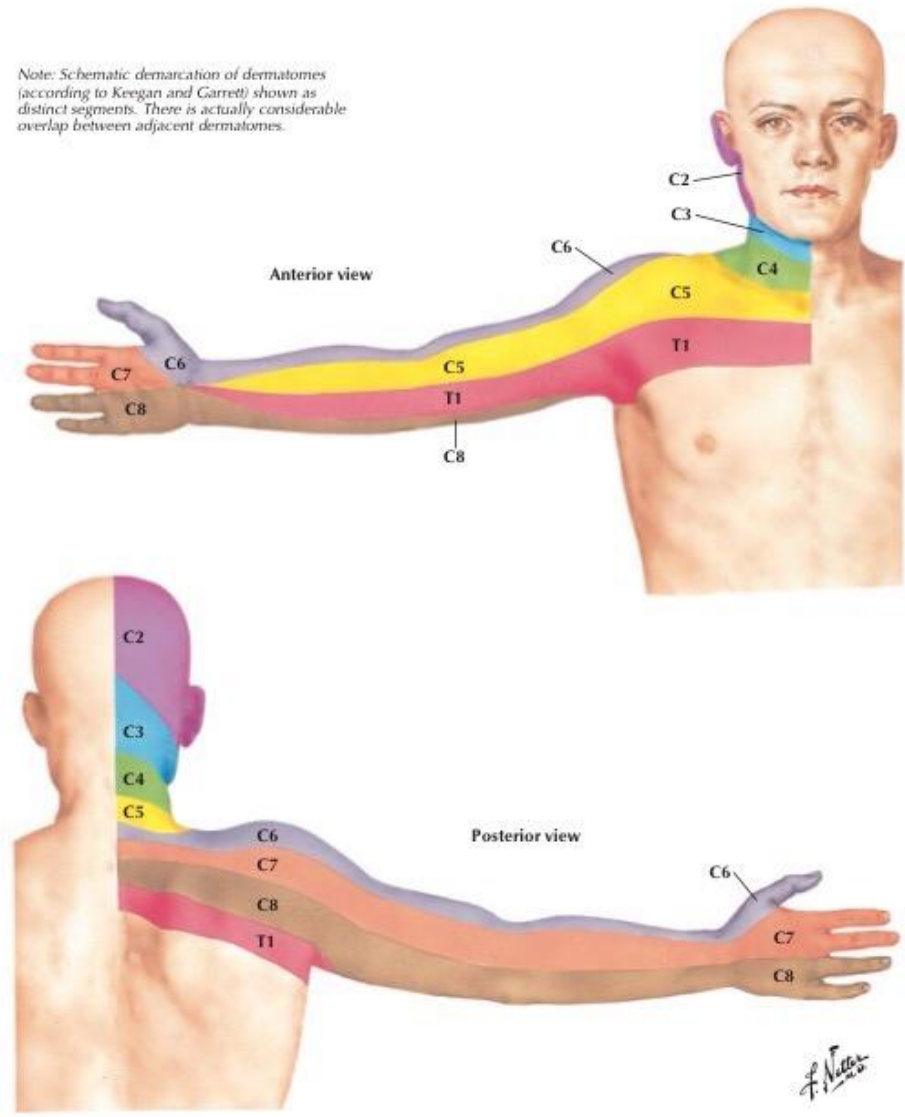
Plate 467

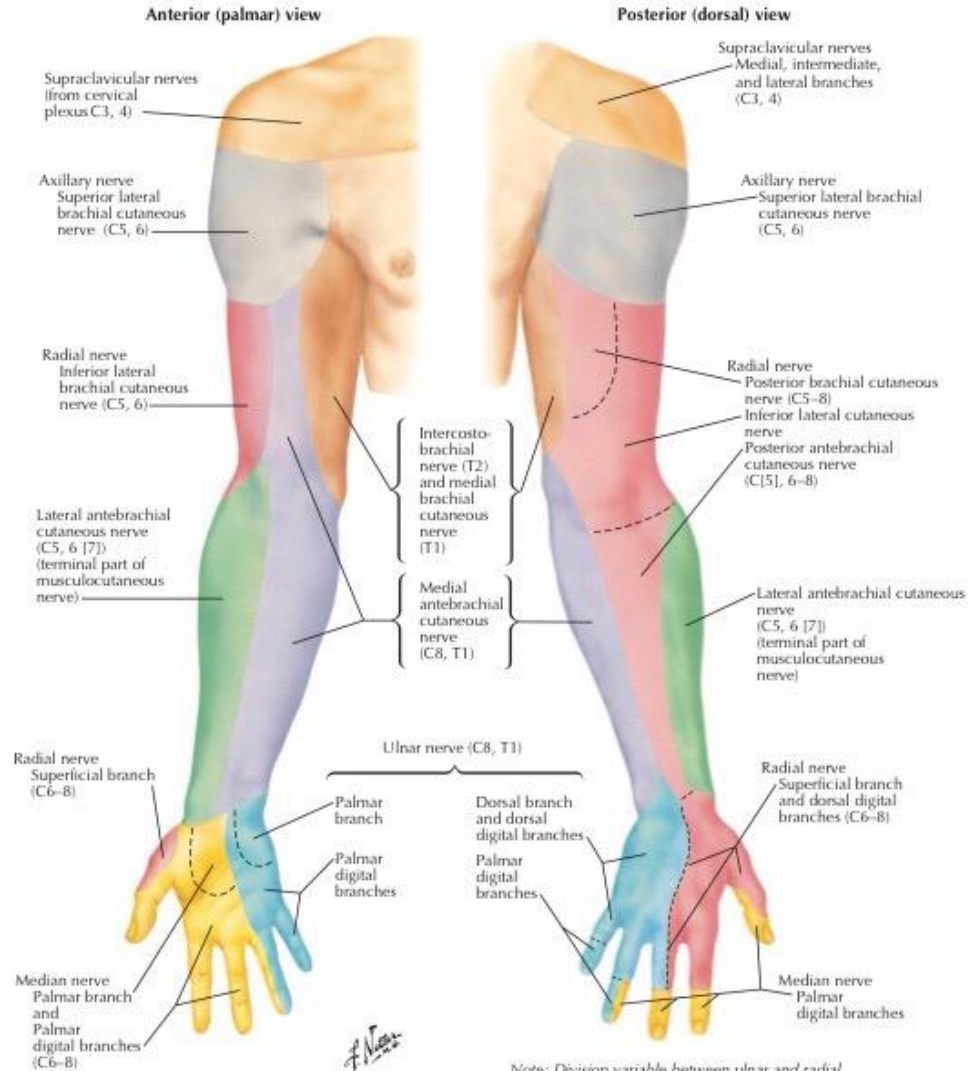
- 467 Shoulder MRI, CT Scan, and Arthrogram

### Muscle Tables

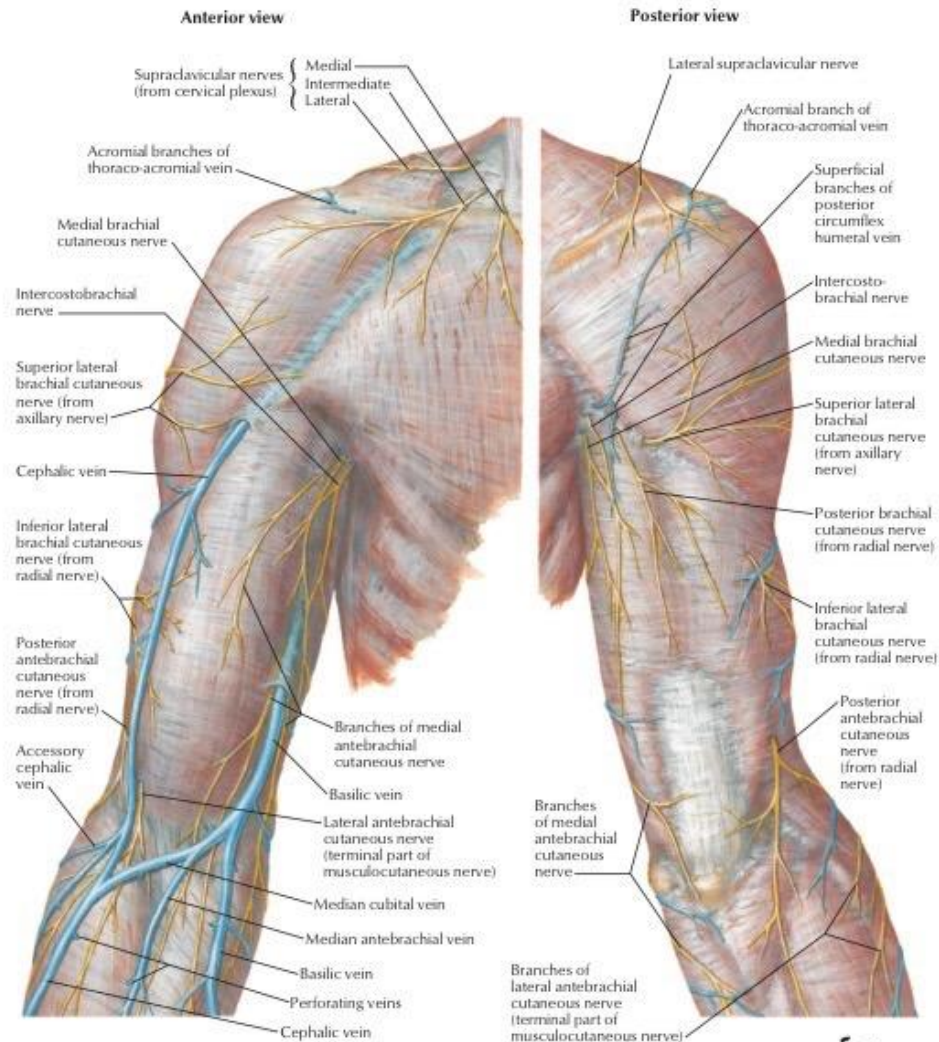


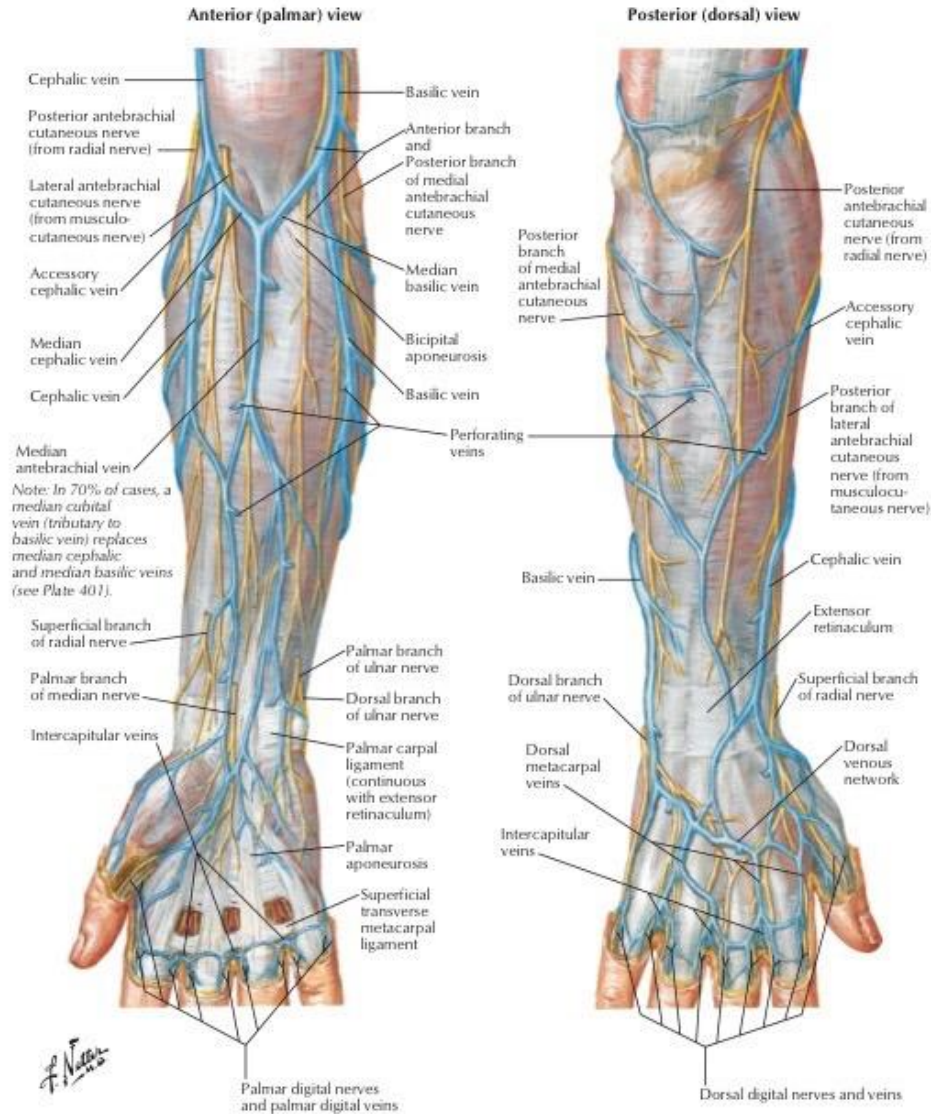
*Note: Schematic demarcation of dermatomes (according to Keegan and Garrett) shown as distinct segments. There is actually considerable overlap between adjacent dermatomes.*

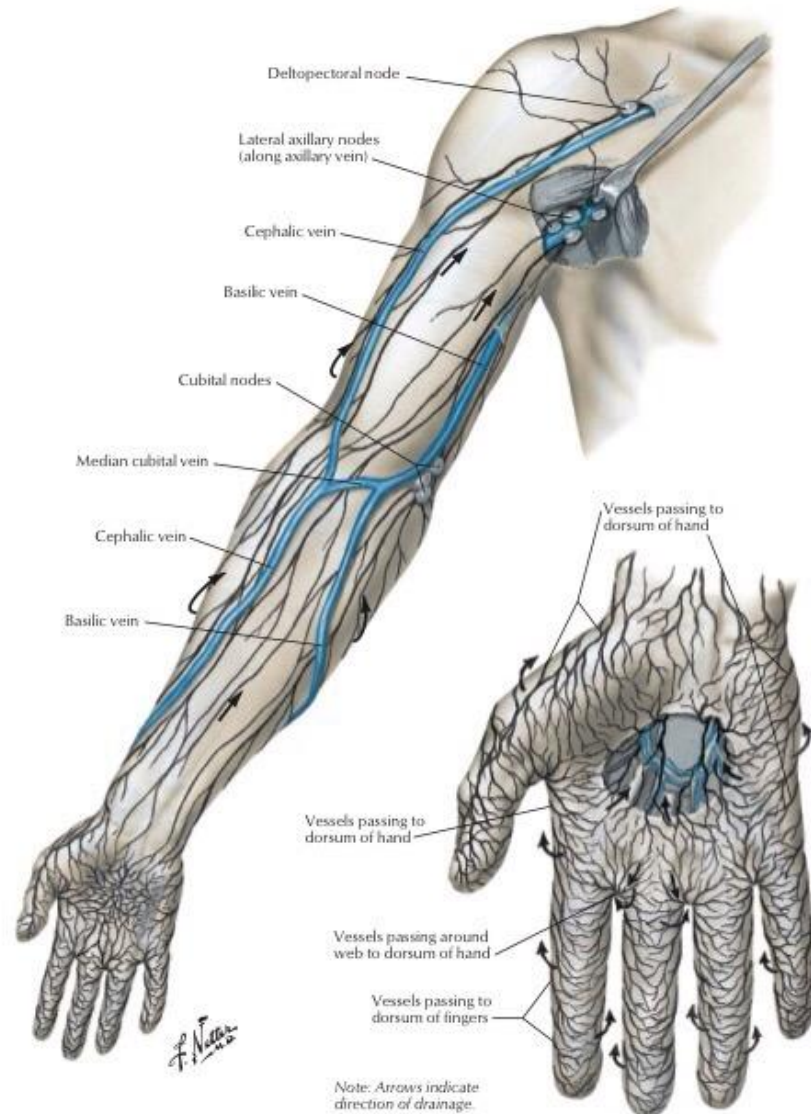




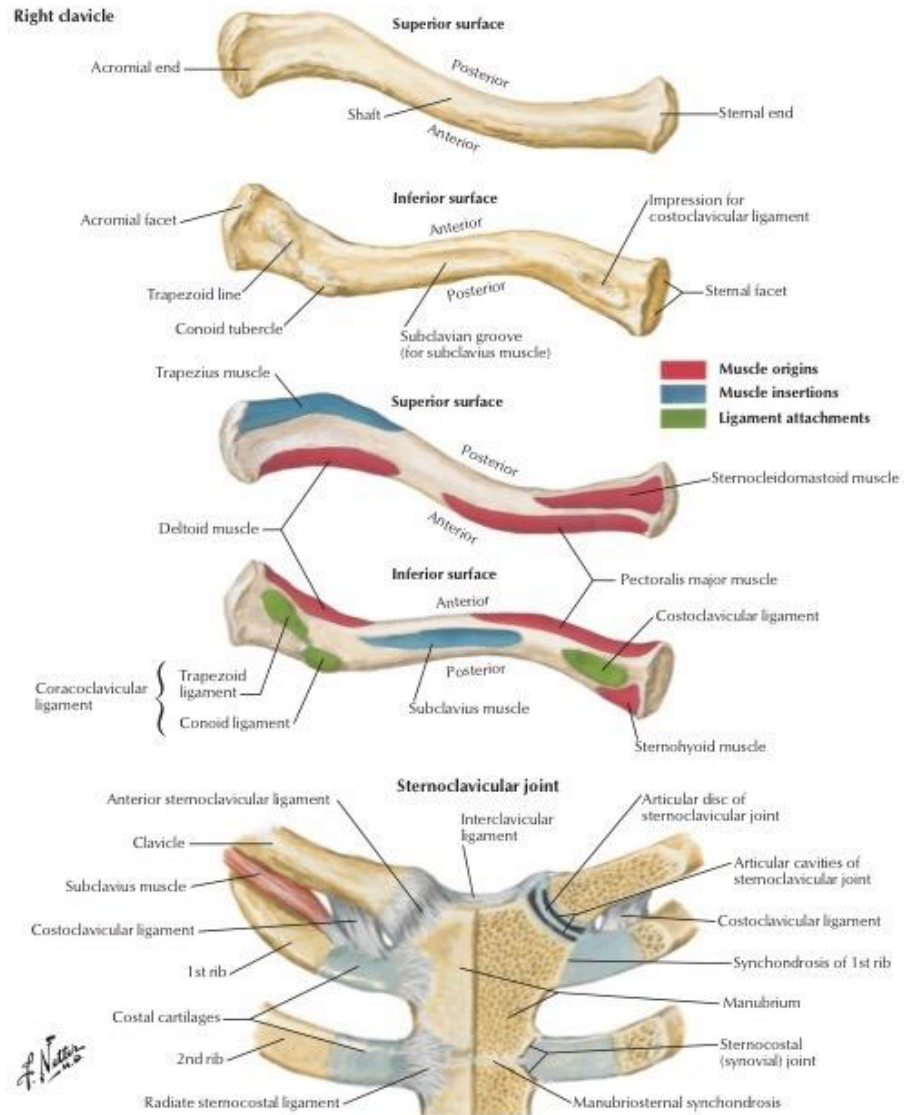








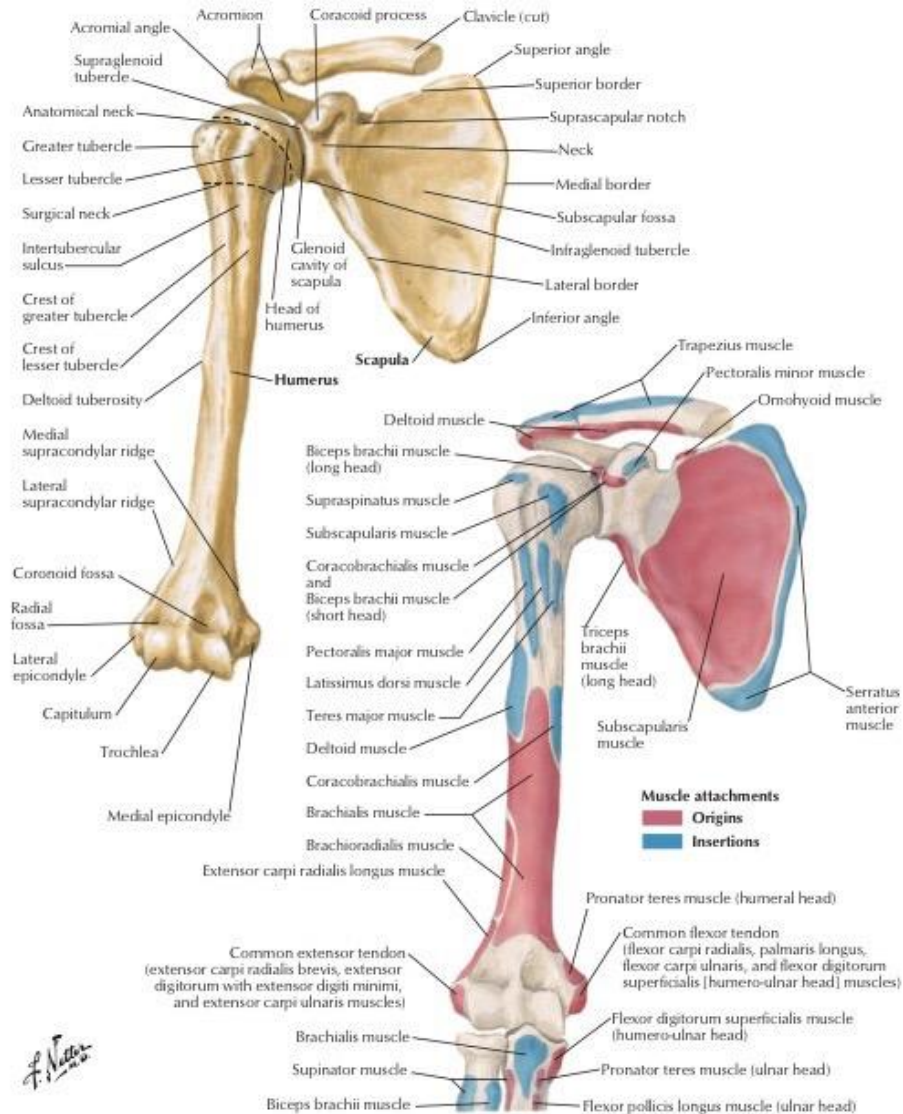




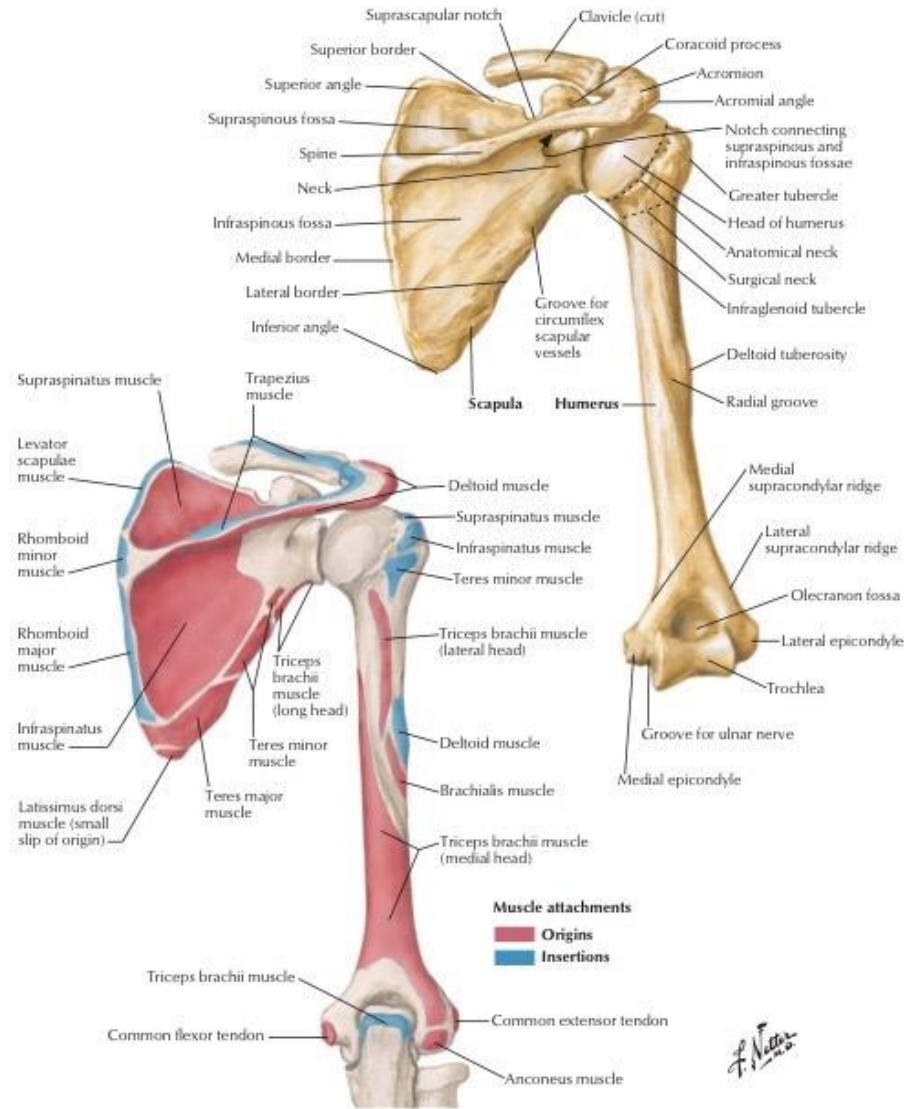
F. Netter

## Humerus and Scapula: Anterior Views

See also Plates 183, 407, 422

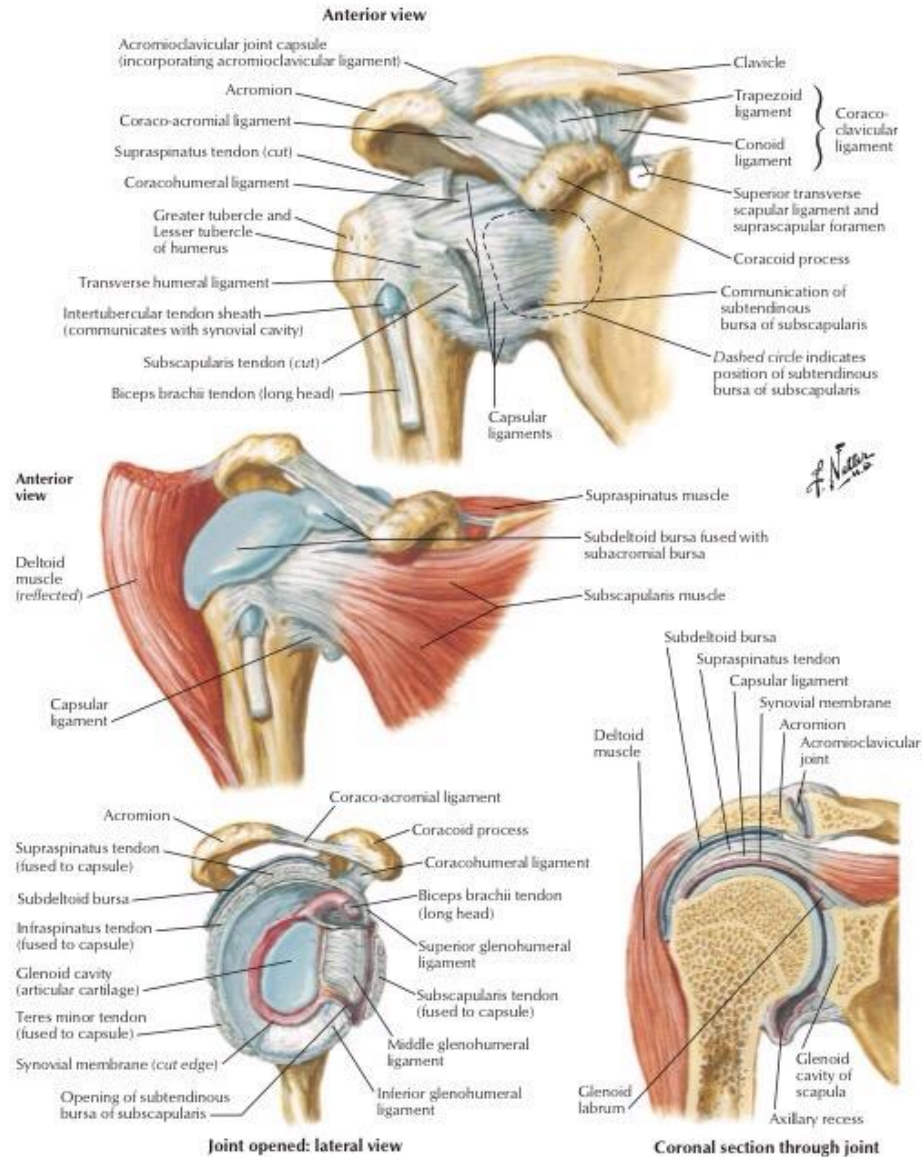


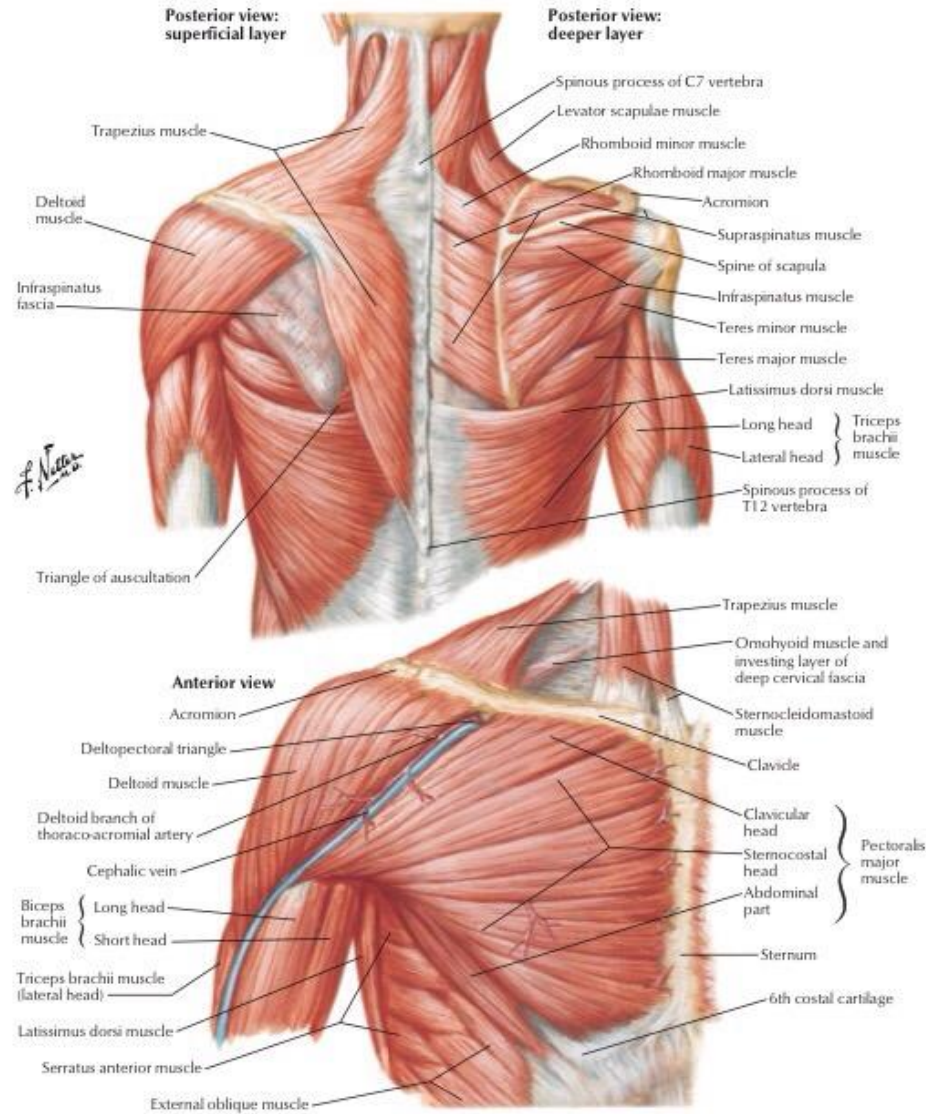
F. Netter

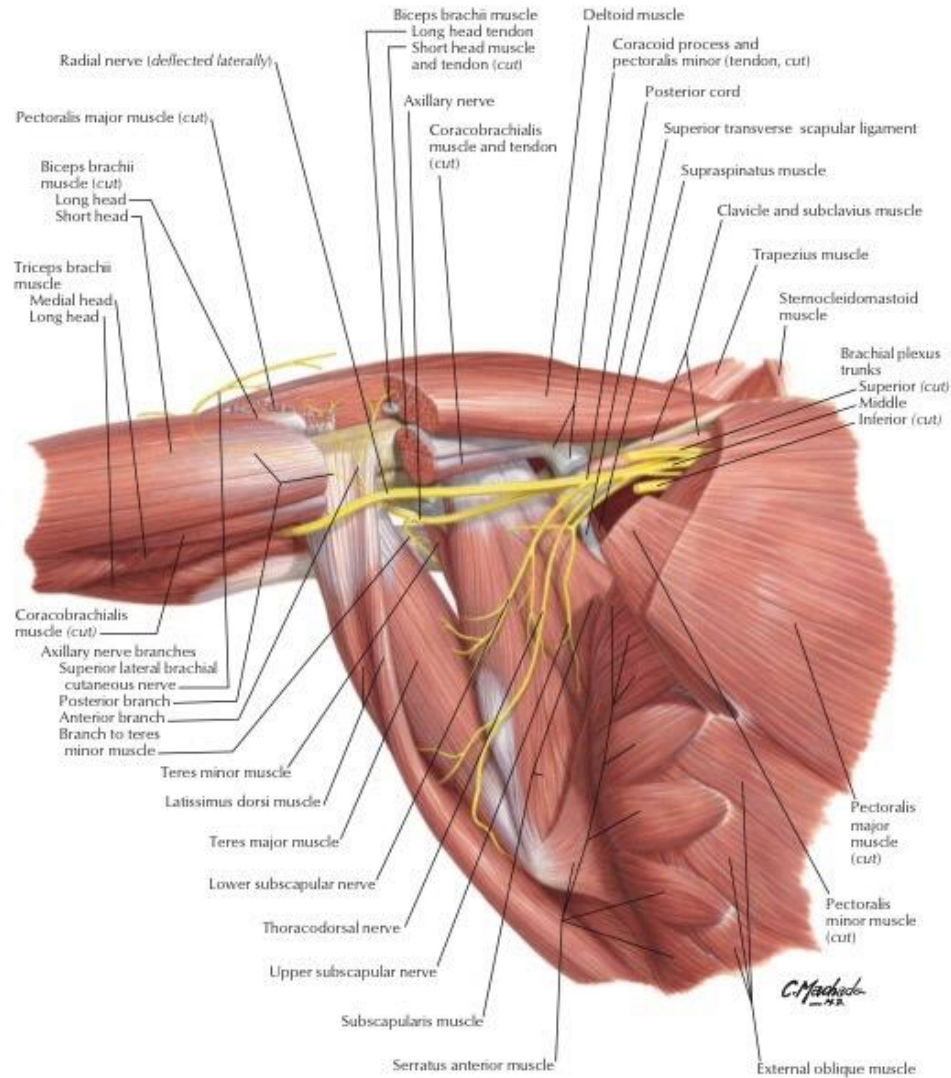




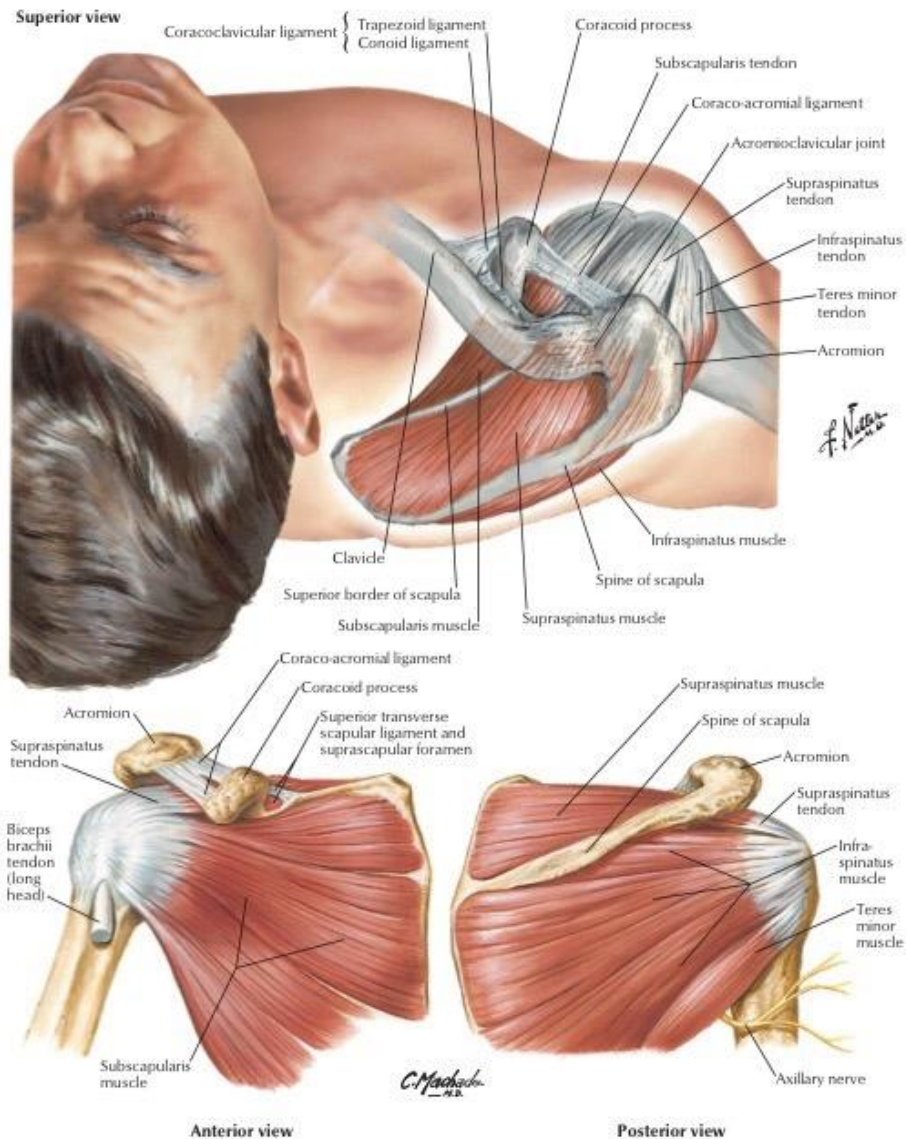




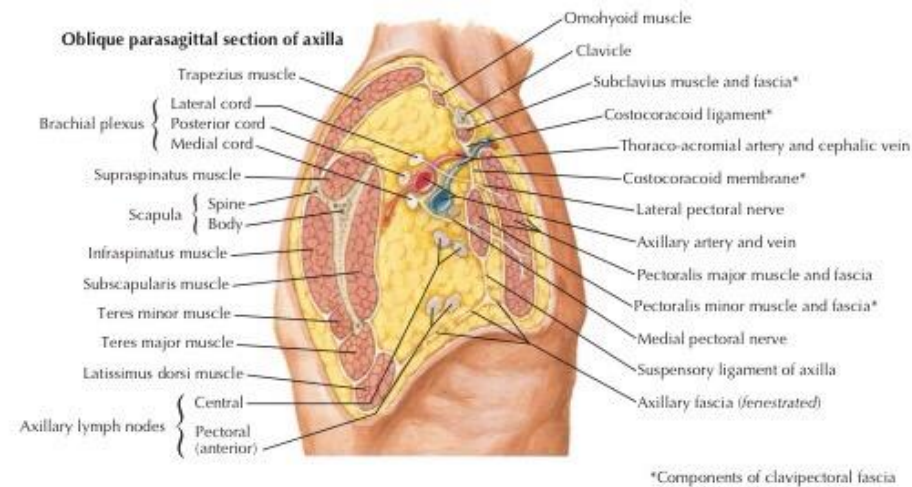
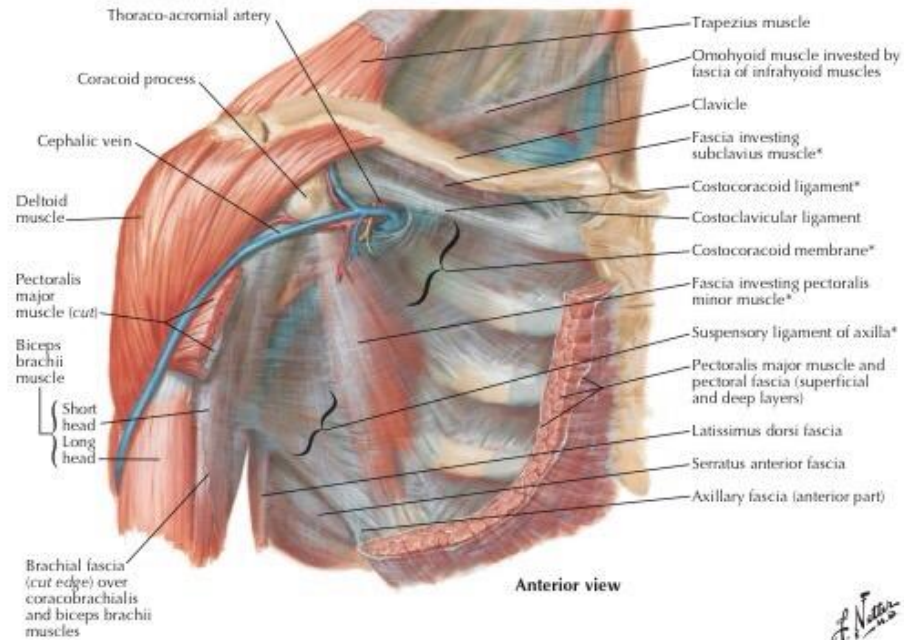


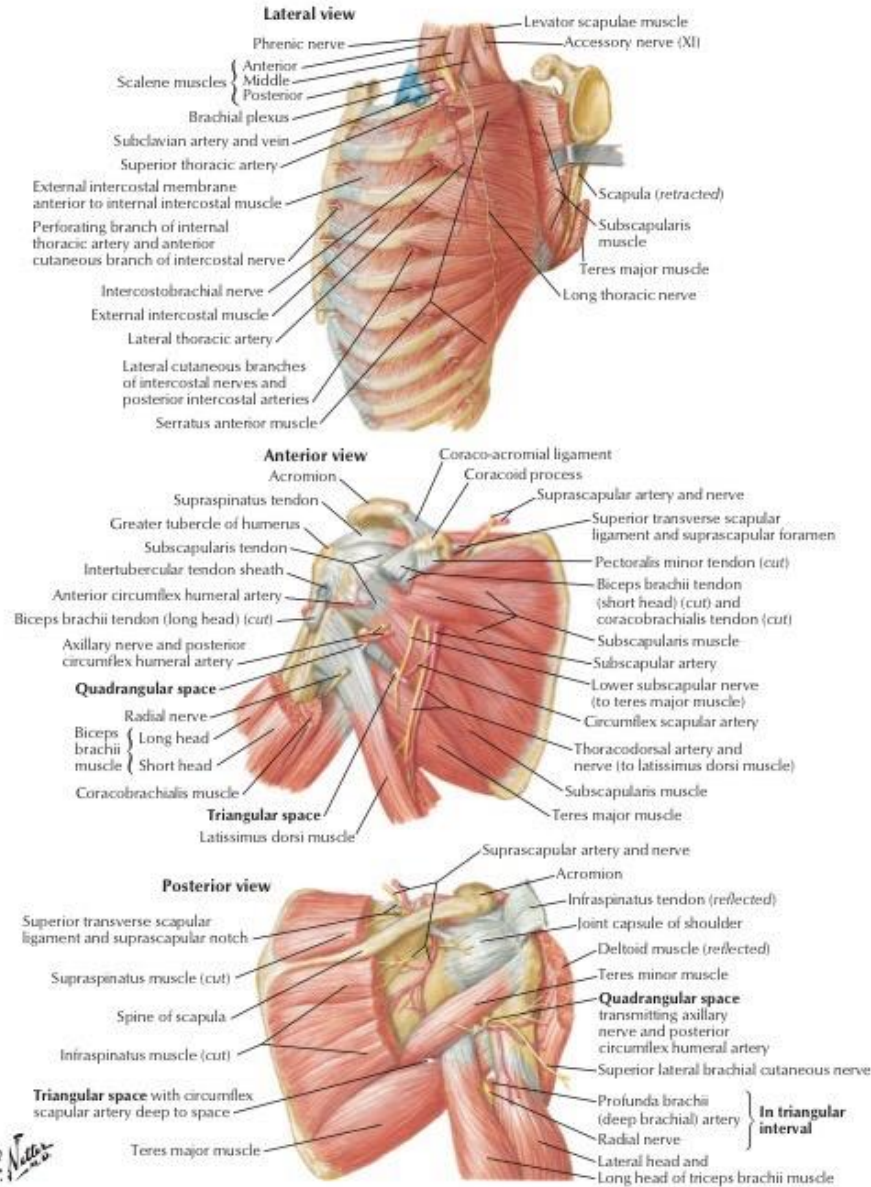


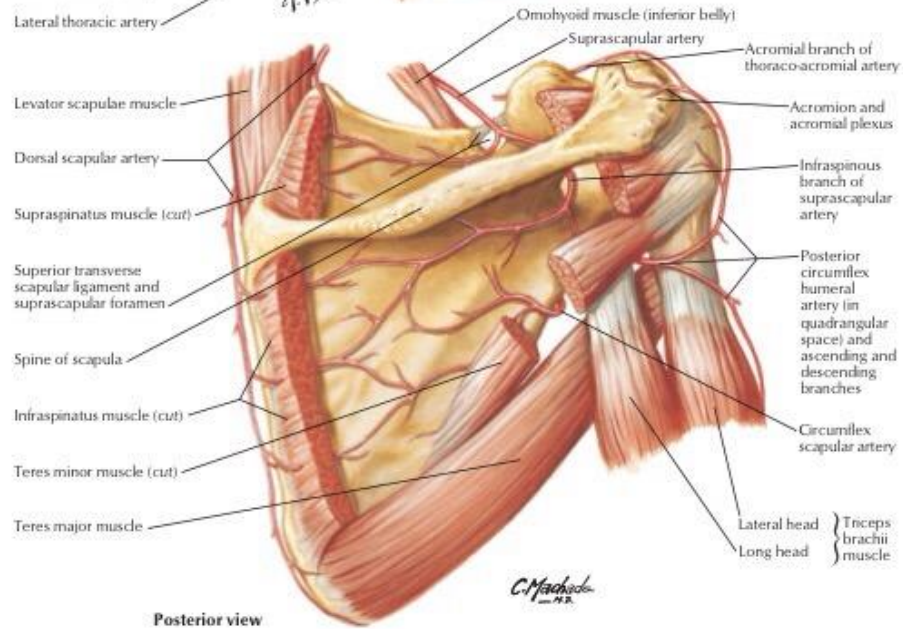
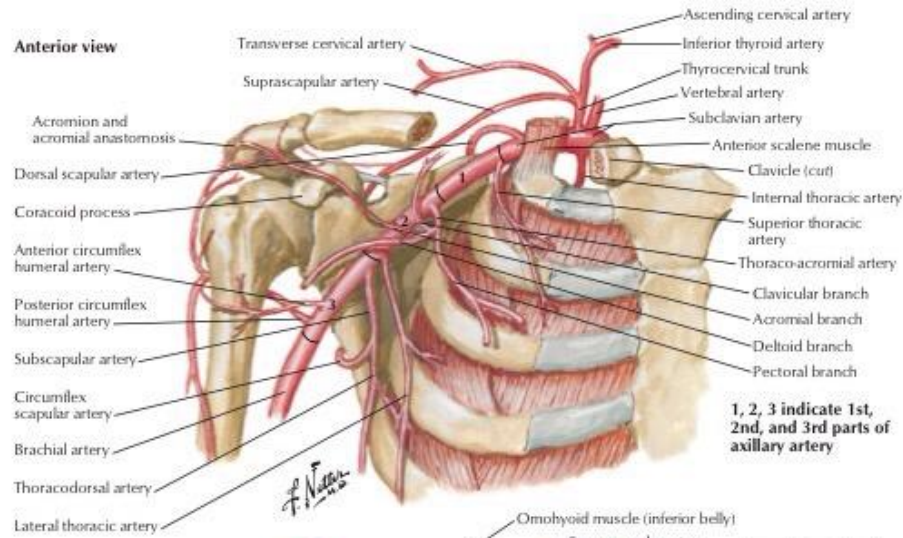




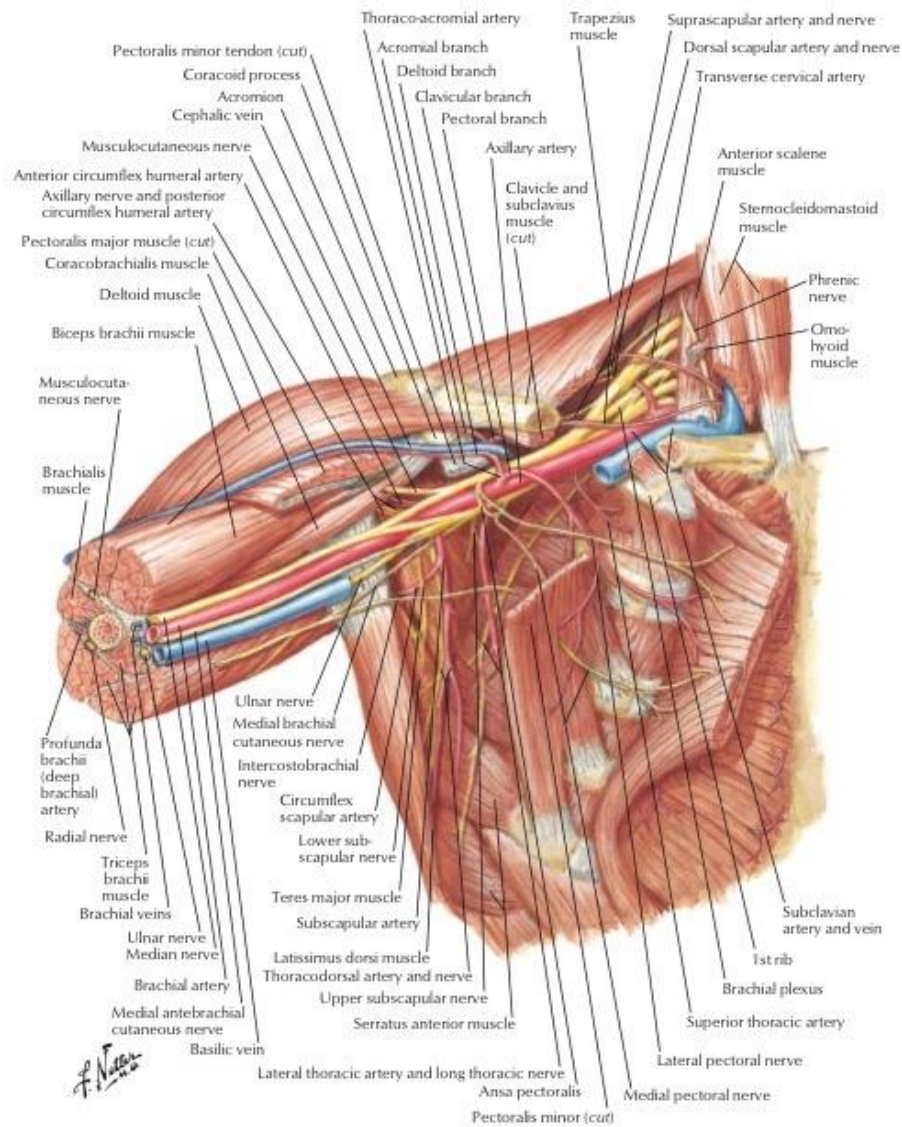






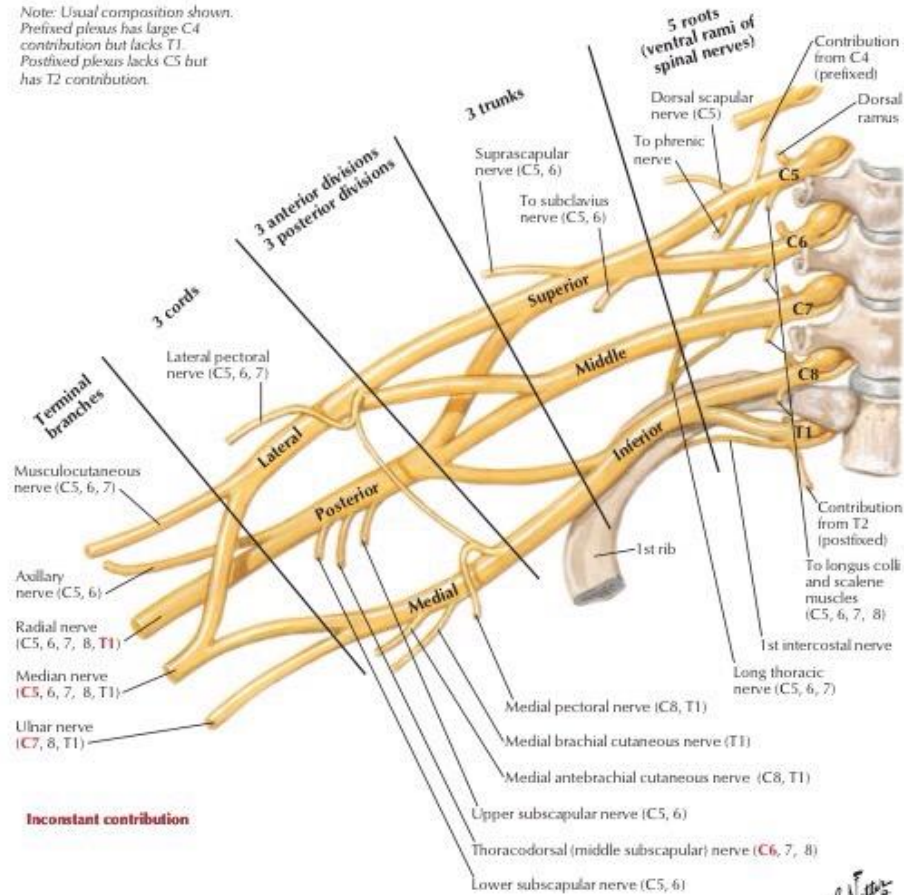




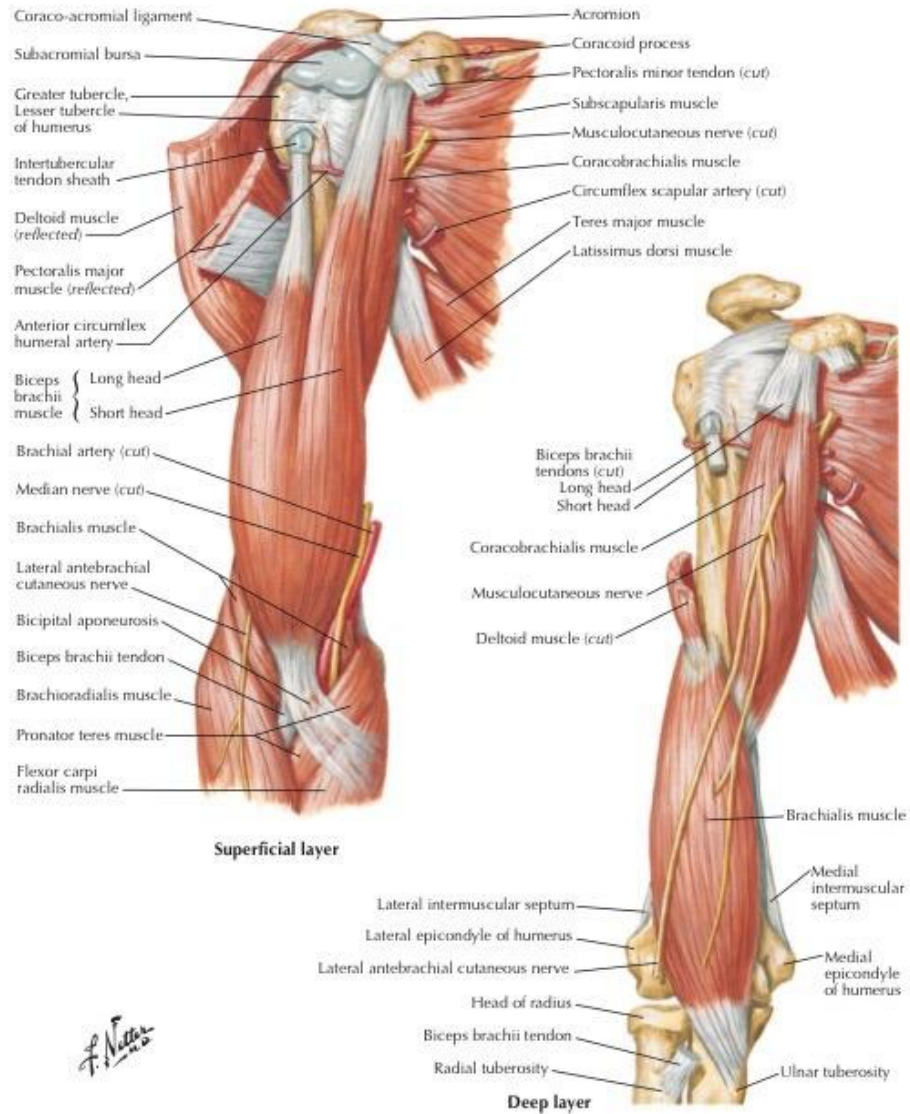




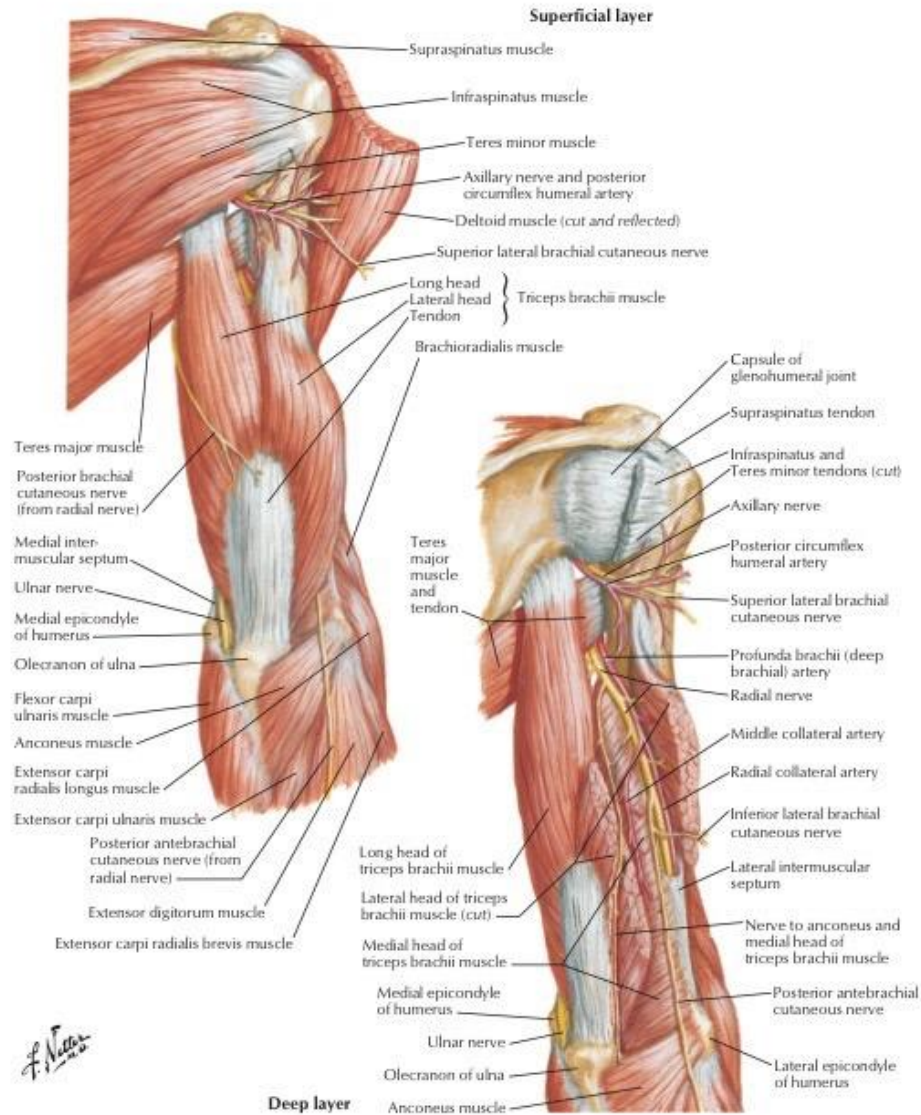
Note: Usual composition shown.  
 Prefixed plexus has large C4 contribution but lacks T1.  
 Postfixed plexus lacks C5 but has T2 contribution.

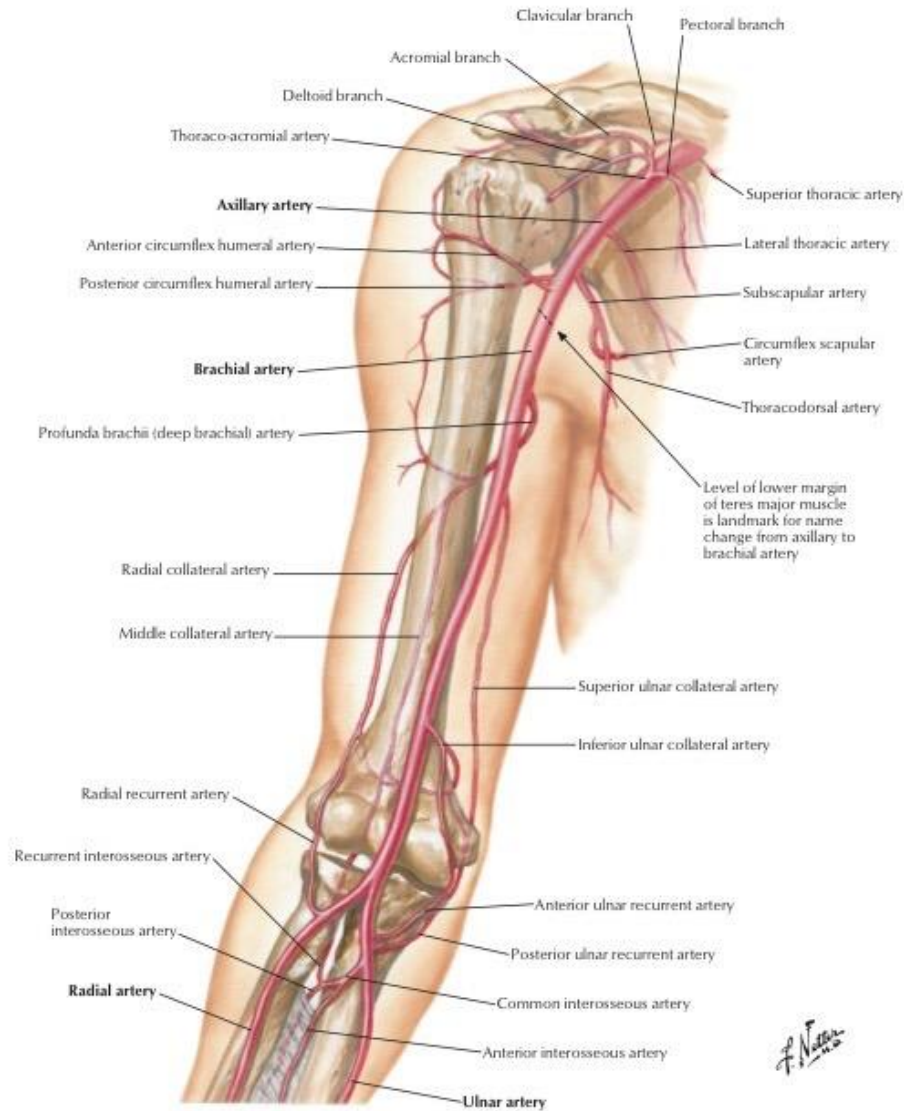


*F. Netter*



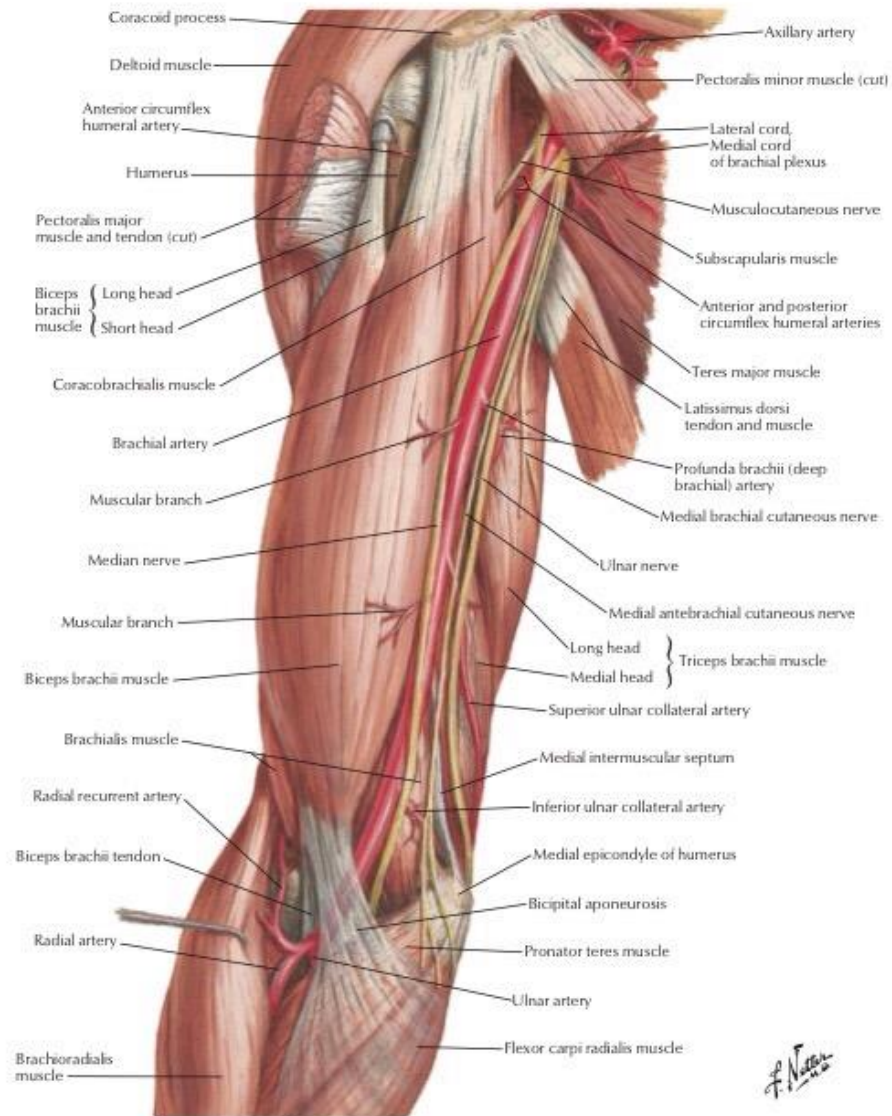
F. Netter





*F. Netter*







# Arm: Serial Cross Sections

