

A fantastic location for an SDA home



- ☐ Flat land
- ☐ Pedestrian footpaths along Monash Road
- ☐ Close access to Logan Motorway
- ☐ Public transport close by
- ☐ Close proximity to medical facilities and local shopping
- ☐ Close to CPL services:
 - 10km to Browns Plains
 - 12km to Beenleigh



Located in close proximity to local amenity

Medical facilities

- ✓ 3km to Logan Hospital
- ✓ 700m to Logan Cardiology and Specialist Centre
- ✓ 300m to Loganlea Family Practice
- ✓ 800m to Loganlea Medical Centre
- ✓ 1.1km to Chambers Flat Road Medical Centre
- ✓ 1.8km to Wellcare Medical Centre Kingston
- ✓ 2.8km to Waterford West Medical Centre
- ✓ 2.8km to Allcare Kingston Medical Centre
- ✓ 3km to Jacaranda Medical Centre



Public Transport

- ✓ 100m to bus stop serviced by Route 560 (Logan Hyperdome to Regents Park)
 - half hourly services Monday to Friday
 - hourly services Saturday and Sunday
- ✓ 200m to bus stop serviced by Route 545 (Garden City to Browns Plains)
 - half hourly services Monday to Friday
 - hourly services Saturday and Sunday
- ✓ 1.9km to Loganlea Train Station



Shopping

- ✓ 700m to Palms Shopping Centre including IGA
- ✓ 900m to Woolworths Meadowbrook
- ✓ 1.2km to Marsden Park Shopping Centre including Coles and Chempro Chemist
- 1.4km to Aldi, Marsden





24-26 MONASH ROAD
LOGANLEA

LOGANLEA RIVER
BRIDGE

WARREN SHOPPING
CENTRE

GARDEN CITY

Located in close proximity to local amenity

Medical facilities

- ✓ 3km to Logan Hospital
- ✓ 700m to Logan Cardiology and Specialist Centre
- ✓ 300m to Loganlea Family Practice
- ✓ 800m to Loganlea Medical Centre
- ✓ 1.1km to Chambers Flat Road Medical Centre
- ✓ 1.8km to Wellcare Medical Centre Kingston
- ✓ 2.8km to Waterford West Medical Centre
- ✓ 2.8km to Allcare Kingston Medical Centre
- ✓ 3km to Jacaranda Medical Centre



Public Transport

- ✓ 100m to bus stop serviced by Route 560 (Logan Hyperdome to Regents Park)
 - half hourly services Monday to Friday
 - hourly services Saturday and Sunday
- ✓ 200m to bus stop serviced by Route 545 (Garden City to Browns Plains)
 - half hourly services Monday to Friday
 - hourly services Saturday and Sunday
- ✓ 1.9km to Loganlea Train Station

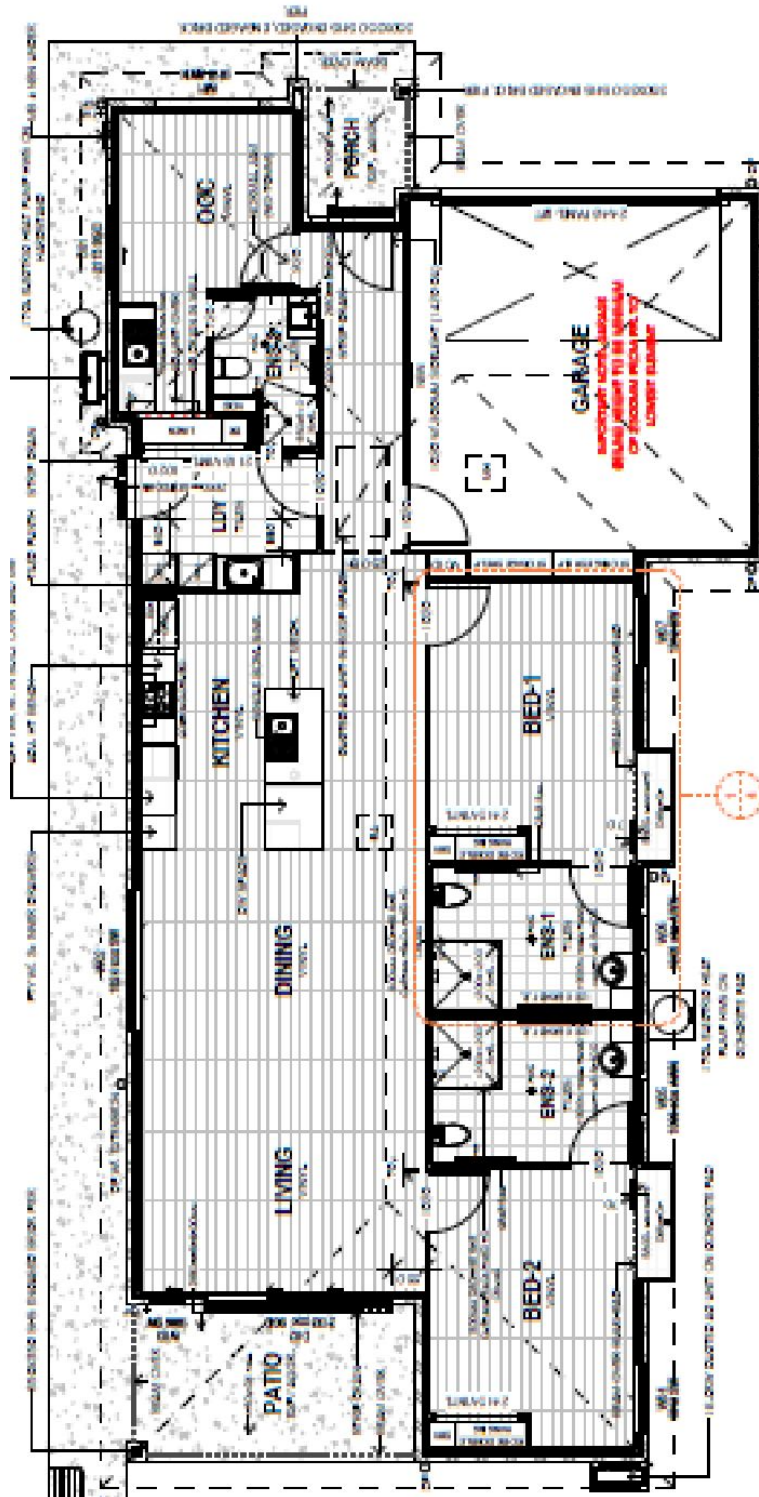


Shopping

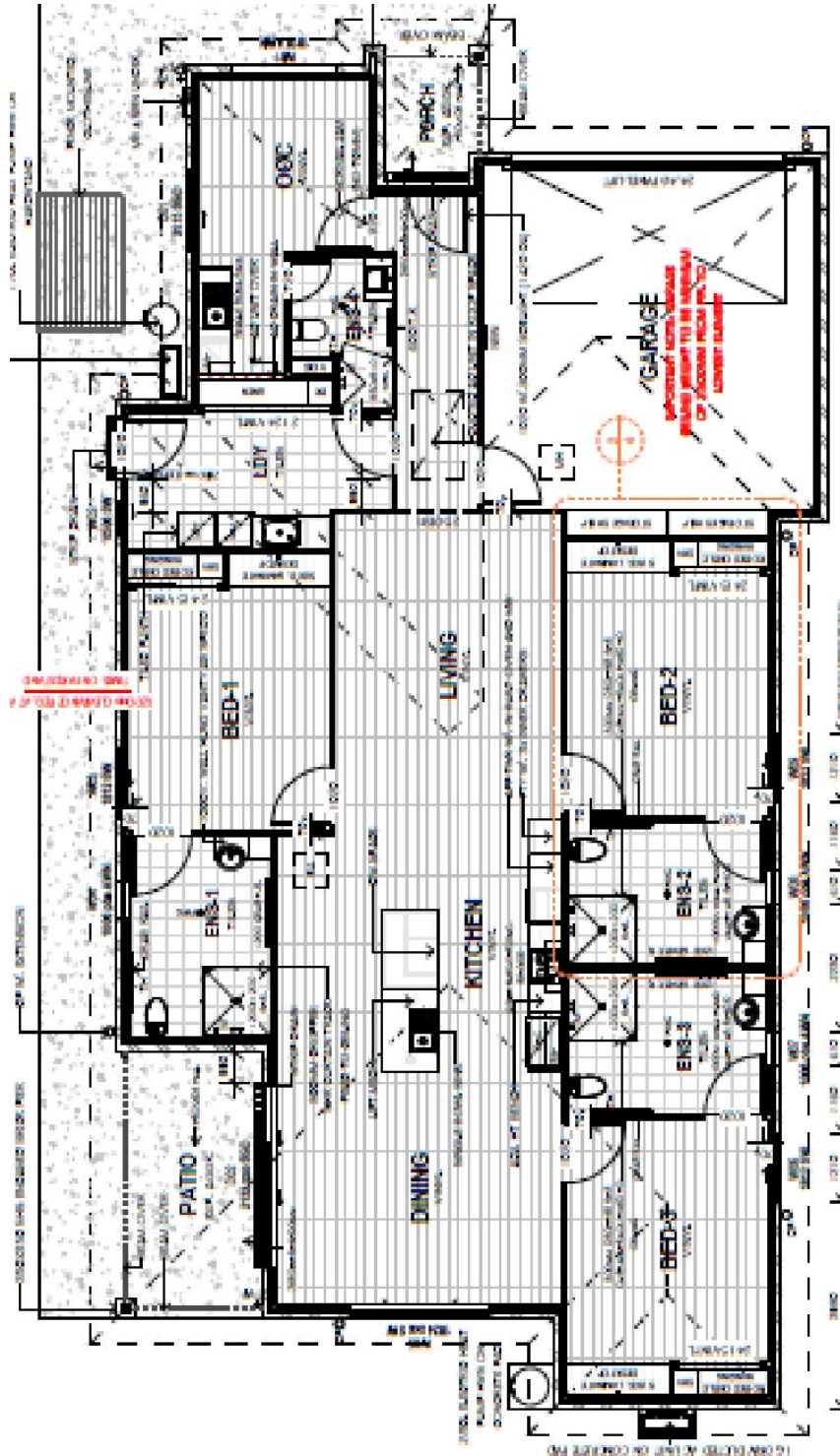
- ✓ 700m to Palms Shopping Centre including IGA
- ✓ 900m to Woolworths Meadowbrook
- ✓ 1.2km to Marsden Park Shopping Centre including Coles and Chempro Chemist
- 1.4km to Aldi, Marsden



2 Bedroom + OOA 'High Physical Support'



3 Bedroom + OOA 'High Physical Support'



Potential Façade Options

