



THE
SCIENCE
OF
WHERE



Технологическая экосистема ArcGIS

Ресурсы для геокриологов-исследователей

PYRN Russia meeting #44 21.02.2019

Евгений Панченко

План

- ПО-инфраструктура
- Ресурсы для геокриологов
- Дата-менеджмент
- Как получить бесплатные пробники
- Лицензирование



ПО-инфраструктура ArcGIS



Symphony of ArcGIS Apps

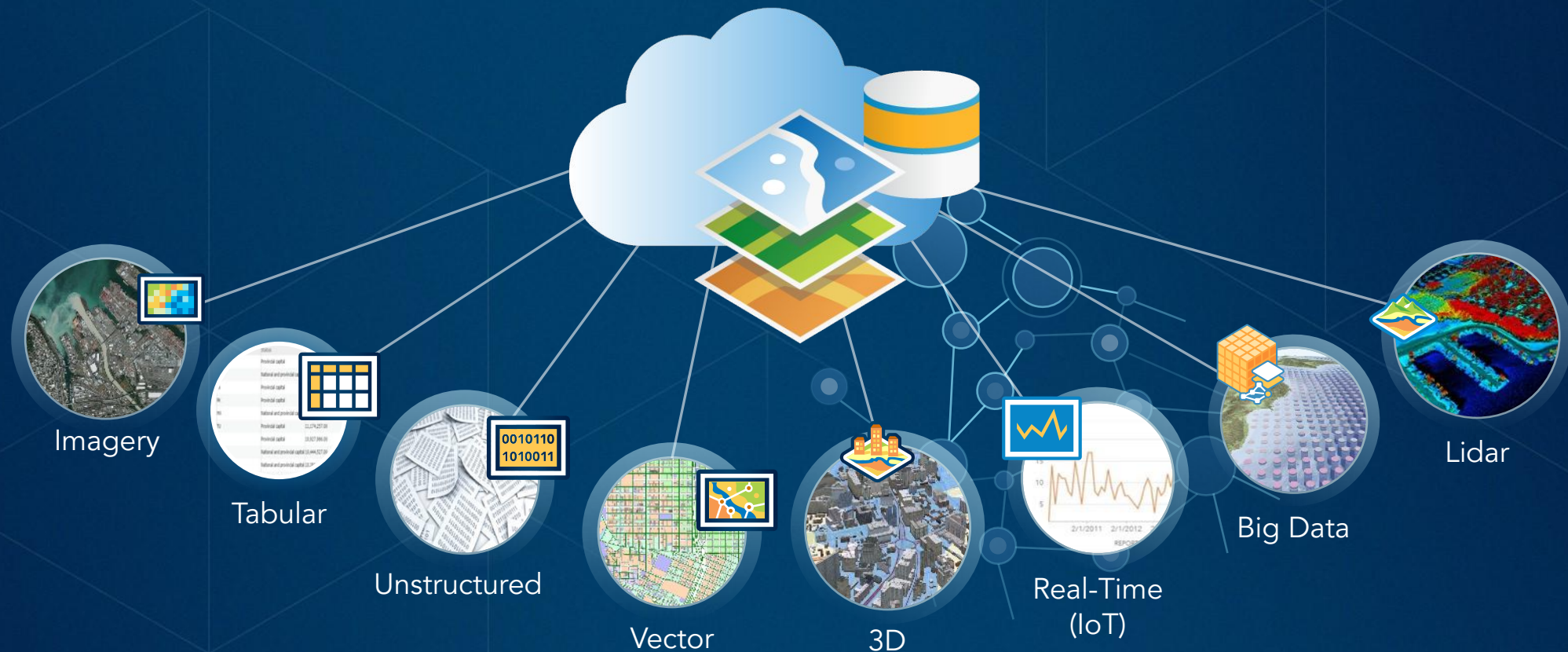


ArcGIS – экосистема из различных ПО



ArcGIS

Интегрирует все типы данных



Настольные приложения – ArcMap vs ArcGIS Pro

- Pro

- UX
- Веб-интеграция
- 3D
- Красивые карты

- ArcMap

- Больше инструментов и расширений
- Поддерживается, но не развивается

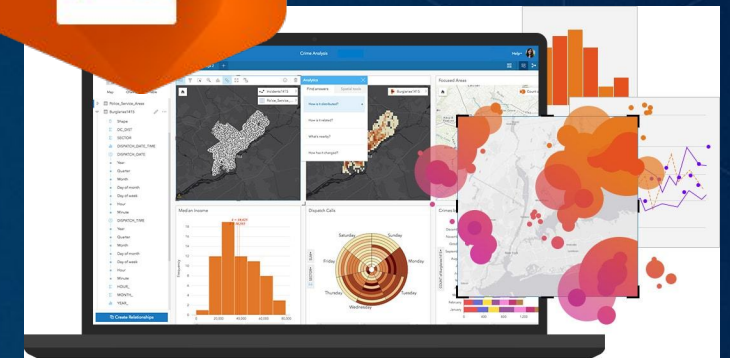
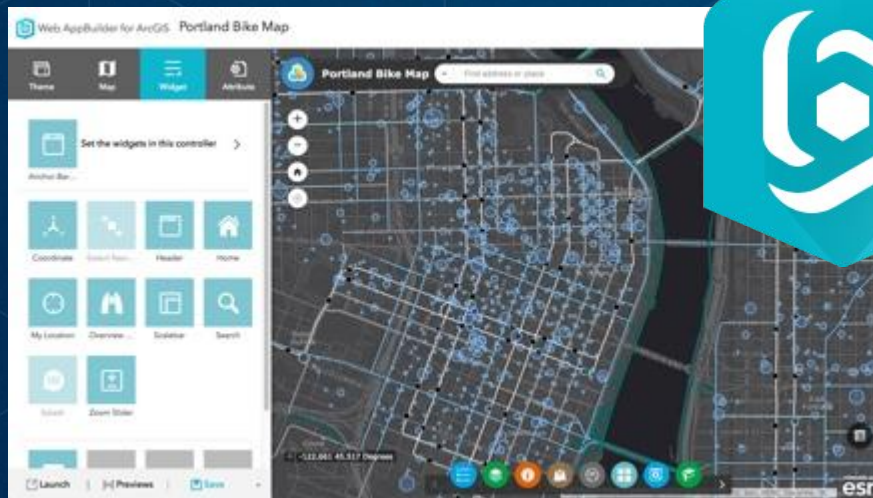
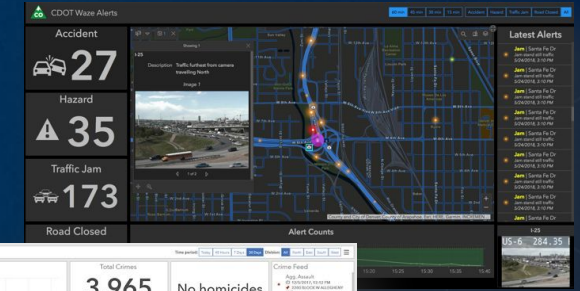


Веб-платформа ArcGIS Online (AGOL)

- Интегрирует все компоненты экосистемы
- Обмен данными
- Личный аккаунт или корпоративный
- Доступ к ArcGIS Living Atlas



Веб-приложения



Ресурсы для геокриологов



Landsat Apps

- 4 приложения
- Быстрый просмотр разных комбинаций каналов
- Временные ряды
- Change detection
- Маскирование
- Собственные индексы
- Спектральные и темпоральные профили
- Доступен через веб и настольный ArcGIS



Landsat Viewer

Simple viewer. Go to any location or check out the book marks, see different indices, travel through time.

[View app](#)



Landsat Explorer

Viewer + ability to perform analysis such as masking, performing change detection, and swipe. Check out the included tutorial.

[View app](#)



Arctic Landsat Viewer

Viewer focused on the Arctic. Explore the land of polar bears and check out things are changing.

[View app](#)



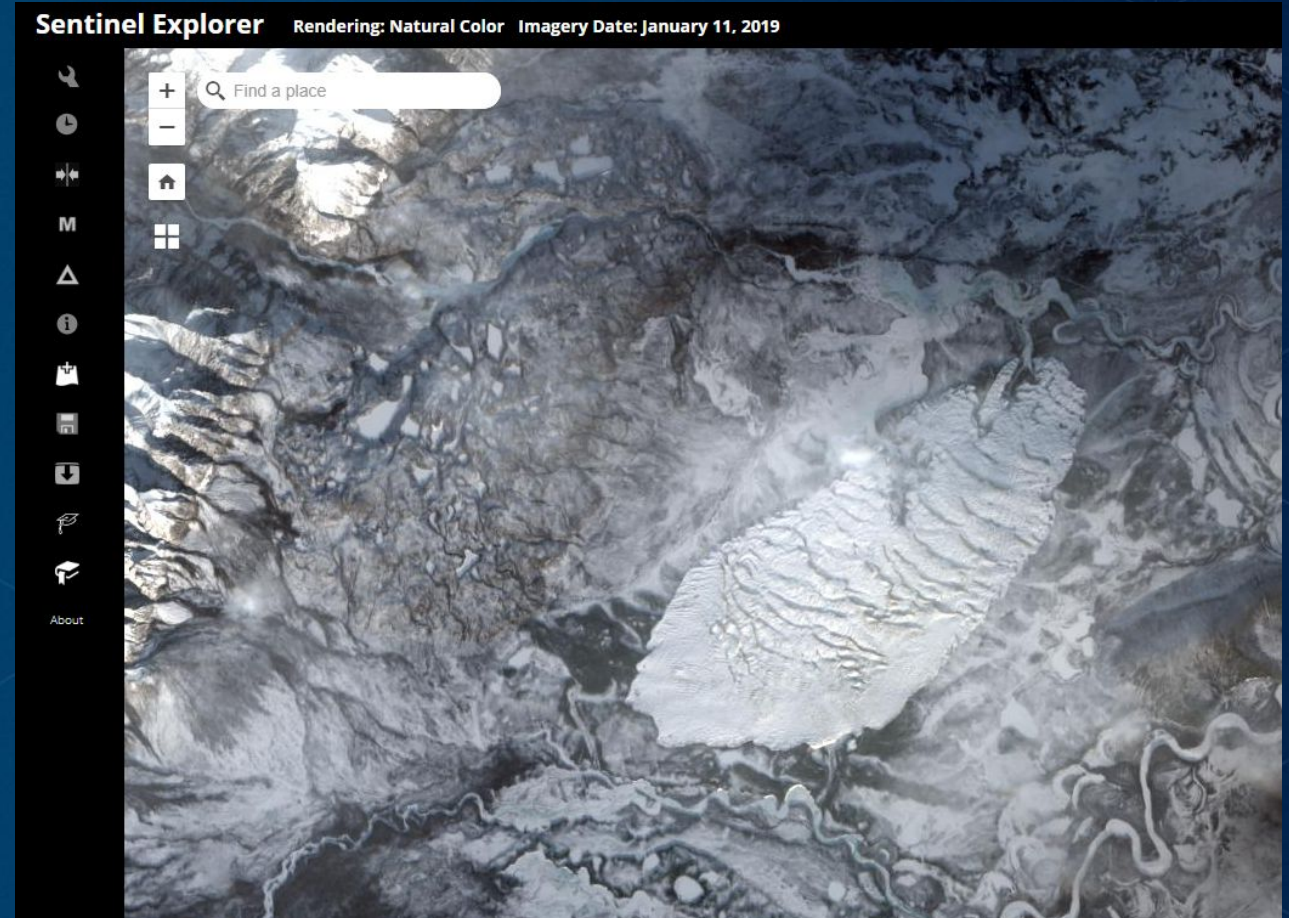
Antarctic Landsat Viewer

Viewer focused on the Antarctic. Check out the land of penguins and how its changing.

[View app](#)

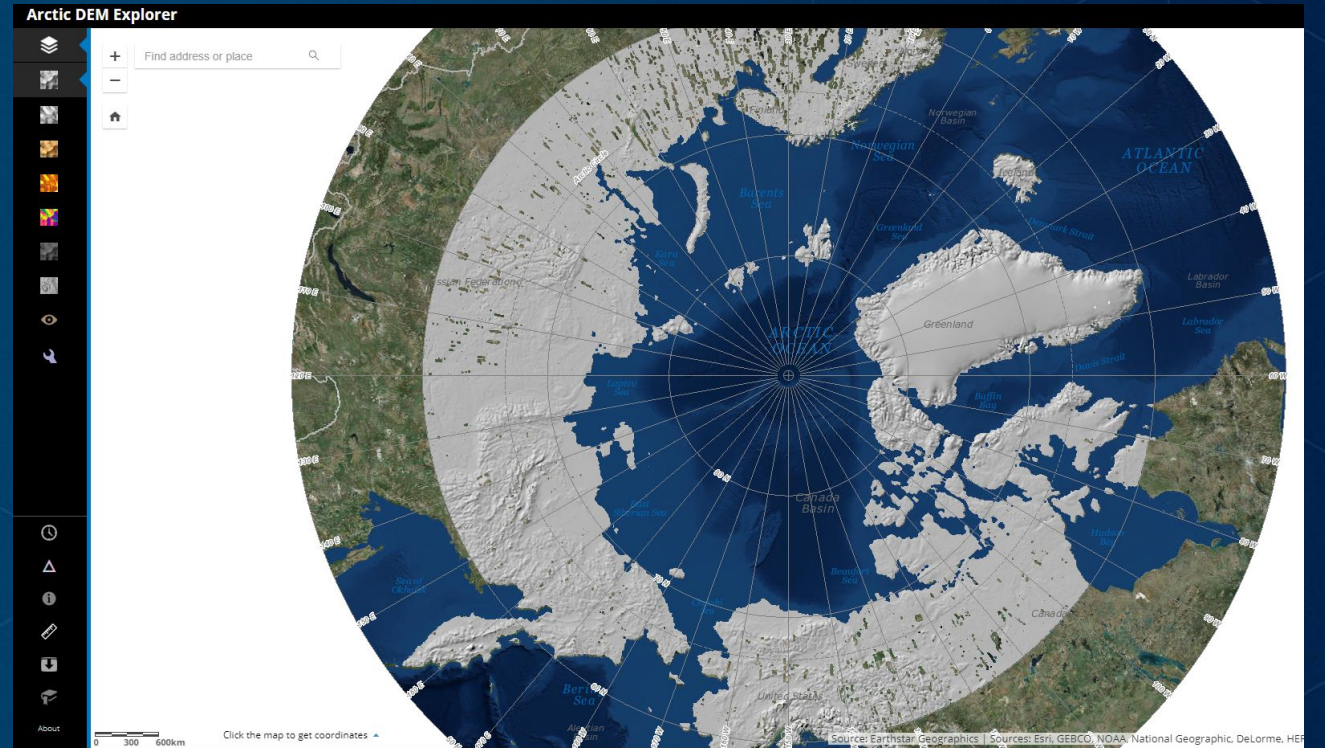
Sentinel Explorer App

- <https://sentinel2explorer.esri.com/>
- До 72 градуса
- Функционал, как у Landsat Explorer



Arctic DEM Explorer

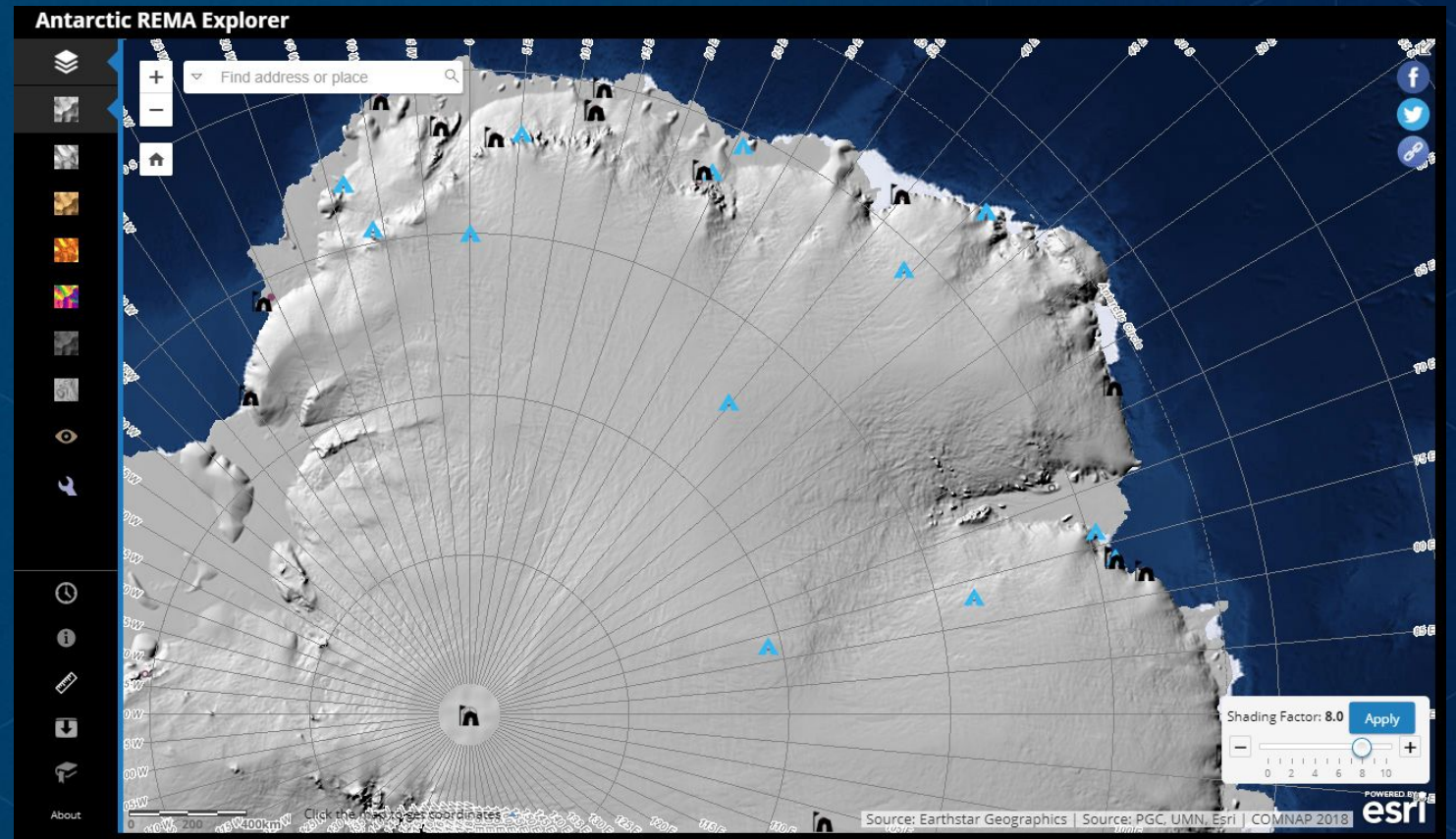
- 2 м (7й релиз)
- **Есть зоны без данных**
- Доступна через Pro, ArcMap, веб-приложения
- Time-enabled
- Тutorial
- Каталог в Living Atlas



"Up until now, we've had a better map of Mars than we've had of the Earth." Ian Howat, director of the Byrd Polar and Climate Research Center at The Ohio State University

Antarctic REMA Explore

- 8 м
- Каталог в Living Atlas
- Слои для визуализации и расчетов



Данные

- <https://livingatlas.arcgis.com/en/>
- <https://resourcewatch.org/>
- [Geological map of the Arctic / Carte géologique de l'Arctique](#)
- [Global Permafrost Zonation Index Map](#)

The ArcGIS Living Atlas of the World is the foremost collection of geographic information from around the globe. It includes maps, apps, and data layers to support your work.

Search Living Atlas content

What's new

Explore items recently added to the ArcGIS Living Atlas of the World, learn about GIS events, and discover ways to use content.

Use ArcGIS Pro to Evaluate Climate Change Data

Climate change is in the news more than ever and the projected changes are characterized as dire. How will climate change impact

Explore

Search and filter datasets

Land x Infrastructure x Clear filters

1-12 / 59 datasets Most viewed

- Terrestrial Human Footprint**
Source: UNBC/WCS/ETH Zurich/UQ/UCU/CUNY/CIESIN
Degradation, Ecosystem, Geospatial, more...
Add to map Details
- Global Material Flows Database**
Source: UN-IRP
Geospatial, Mining, Natural resource, more...
Add to map Details
- Land Ice: Greenland**
Source: NASA
- Subnational Political Boundaries**

ResourceWatch BETA

Data Topics Blog About

North Atlantic Ocean South Atlantic Ocean

Геовизуальное повествование: полезные ссылки

- [Yukon Permafrost Atlas](#)
- [Геовизуальное повествование в ArcGIS](#)
- <https://collections.storymaps.esri.com/how-to-stories/> - **лучшие практики и лайфхаки (анг)**
- <https://storymaps.arcgis.com/ru/five-principles/> - **как сделать успешную карту-историю (рус)**
- <https://storymaps.arcgis.com/ru/app-list/> - **как выбрать оптимальные шаблон (рус)**
<https://developerscorner.storymaps.arcgis.com/> **для продвинутых пользователей и кодеров (анг)**
- <https://storymaps.arcgis.com/ru/faq/> **FAQ (рус)**

Давайте пожонглируем данными



**Пробные версии – можно
запутаться, но стоит
попробовать**



Free 21 Day Trial

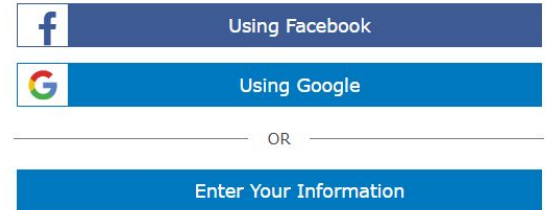
What Do I Get with My Free 21-Day ArcGIS Trial?

- Access to [ArcGIS Online](#) for up to [5 named users](#).
- [ArcGIS Pro](#) desktop software.
- A suite of [ready-to-use](#) apps for the office, field, and community that can be accessed on browsers, desktops, and mobile devices.
- [ArcGIS Living Atlas of the World](#) that includes maps and data on thousands of topics.
- 400 ArcGIS Online [service credits](#) that can be used for data storage, premium data access, performing geocoding, analysis, and more.

Free public account

- Мануал по настройке
- Только AGOL
- Нет настольных приложений
- По сути, для Story Maps

Create Your ArcGIS Public Account



Using Facebook

Using Google

OR

Enter Your Information

Quick Start Guide to

ArcGISSM Online

for Public Accounts

A **free** ArcGIS Online account, called a public account, is also available. These no-cost accounts enable individuals to use ArcGIS Online, including the ability to create web maps and apps. These are intended for informal use by individuals and are not intended for commercial or government work. You can create a public account [here](#). Public account users can author **story maps with the full range of functionality**, except that they can't create a **Story Map Tour** by uploading images (which requires an ArcGIS Online subscription).

Подписка для разработчиков

- **Без временных ограничений**
- **50 кредитов месячный порог**
- **Доступ к Living Atlas**
- **1 пользователь**
- **Не все приложения**
- **Нет настольного компонента**

Sign up for ArcGIS for Developers


First name
Casey


Last name
Jones


Email
casey.jones@example.com


I accept and agree to be legally bound by the [Esri ArcGIS Online Terms of Use and Privacy Policy](#). You can review the [Terms of Use](#) and [Privacy Policy](#) in other select languages.


[Send Confirmation Email](#)



Create and manage your apps


Access web and native client SDKs


Use credits for developing and testing your apps


Join a developer community to communicate and collaborate


Access documentation including a vast library of developer samples


Join beta programs in the Esri Early Adopter Community (EAC)

**Лицензирование -
это не страшно!**



2 сценария для академических работников

- **№1 Персональная лицензия**

- **Полный фарш** (ArcGIS Advanced + модули + AGOL + Living Atlas)
- **1 год** (вкл. техподдержку)
- **Минимум бумажной работы**
- **Только для личного использования**
- **1 привязанная машина**
- **Некоммерческое использование**



2 сценария для академических работников

• №2 Корпоративная лицензия

- **Официальная научная деятельность при организации\институте**
- **Привязанная или плавающая**
- **1 стационарная машина + лэптоп**
- **AGOL полностью**
- **1 год обновлений и техподдержки**
- **50% скидки на все компоненты**
- **ArcGIS Basic**
- **Больше бумажной работы**
- **Некоммерческое использование**

The screenshot displays the City of San Diego website. At the top, there is a navigation menu with links for HOME, GALLERY, MAP, GROUPS, and MY CONTENT, along with a search bar containing the text "Find maps, applications and more...". Below the navigation is a header section featuring the City of San Diego seal and the text "City of San Diego". The main content area is titled "Featured Maps for San Diego" and contains four map thumbnails with the following captions: "Conserved Lands in San Diego", "San Diego Bicycle Paths", "San Diego Developable Land", and "Major Employers in San Diego". Below the maps is a paragraph of text: "San Diego is the 8th largest city in the United States and 2nd largest in the State of California. With its great weather, miles of sandy beaches, and major attractions, San Diego is known worldwide as one of the best tourist destinations. This website contains a variety of maps and apps that you can use to explore San Diego online!". At the bottom, there is a banner for "The City of San Diego" with the tagline "America's Finest City" and a "BEST OF THE WEB PHOTO FINALIST" award logo.

Соцсети

- <https://www.instagram.com/esrius>
- <https://facebook.com/EsriCis>
- <https://vk.com/esricis>
- <https://www.youtube.com/user/esricis>
- <https://www.flickr.com/photos/esricis/albums/72157697397940945>
- <https://blogs.esri-cis.ru/>





esri

**THE
SCIENCE
OF
WHERE**

 **esri** CIS