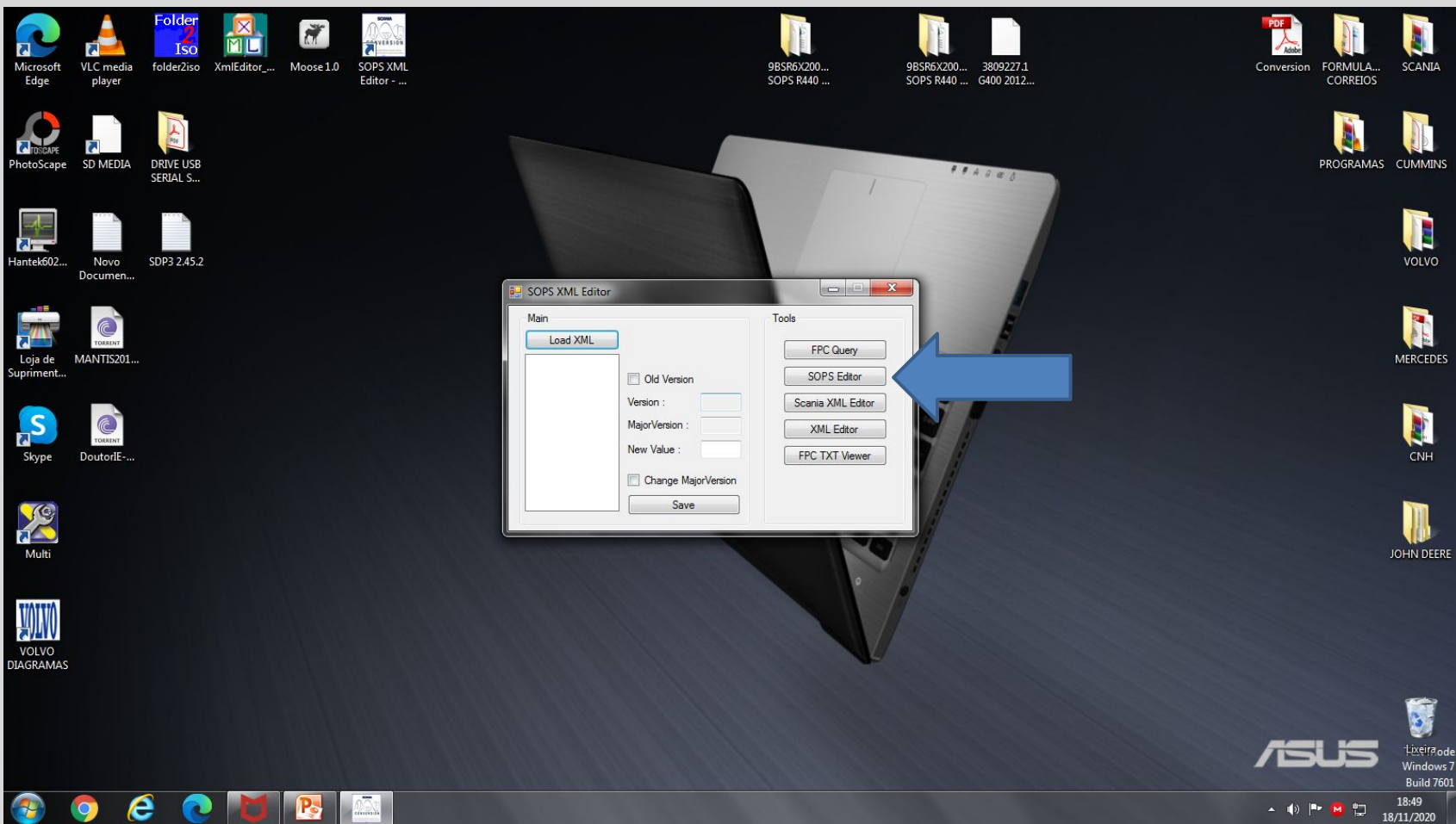


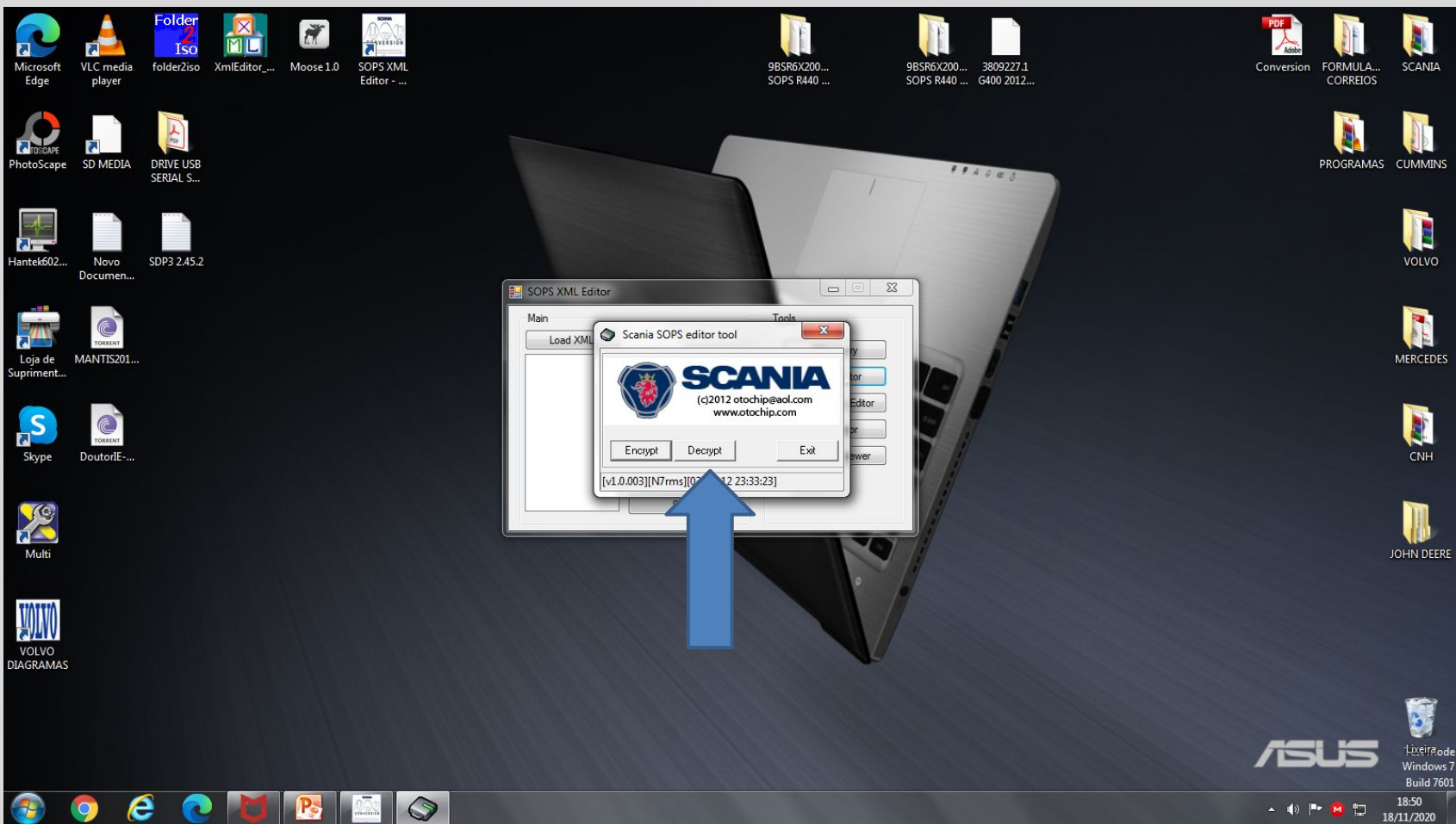


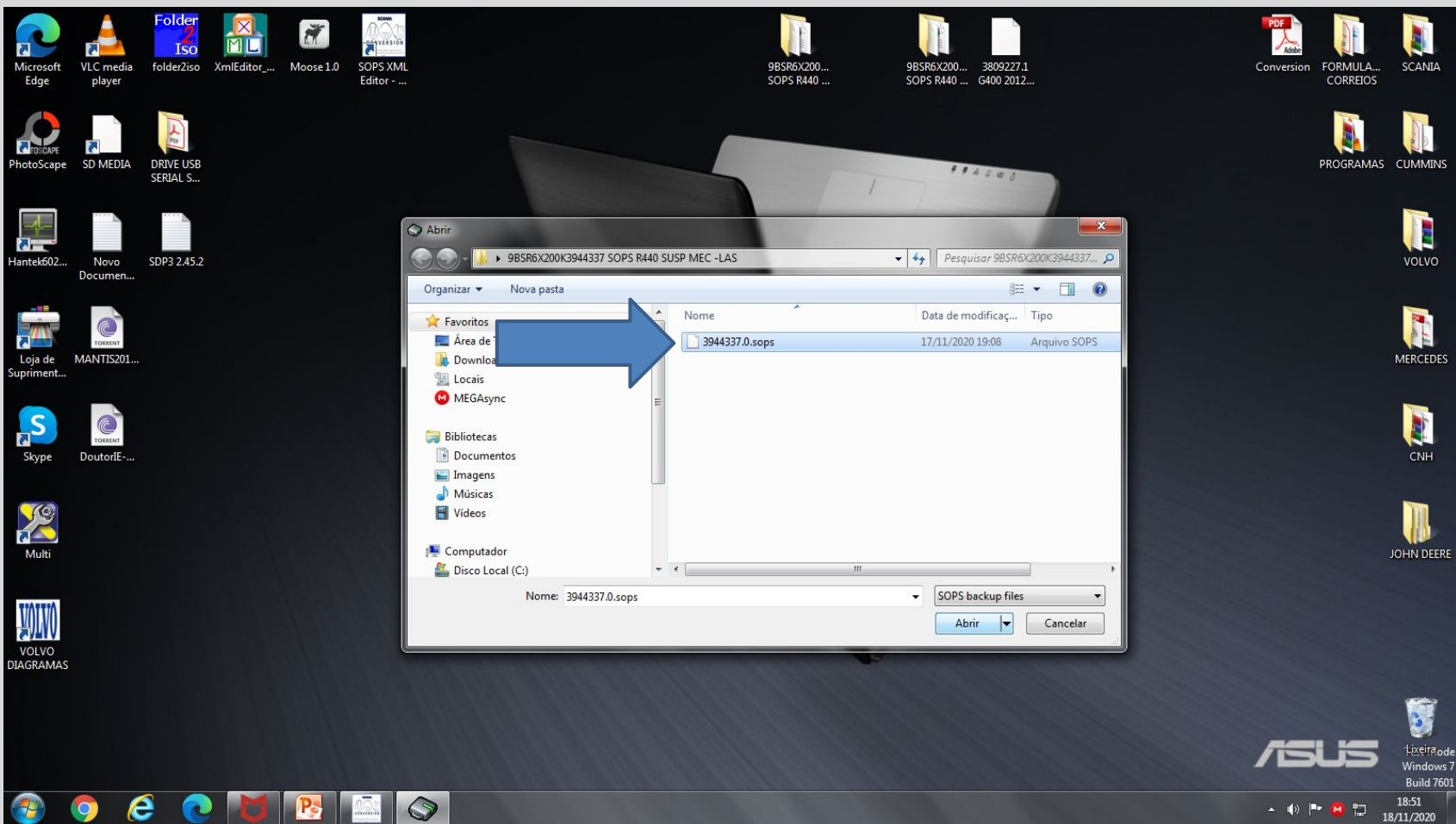
SCANIA

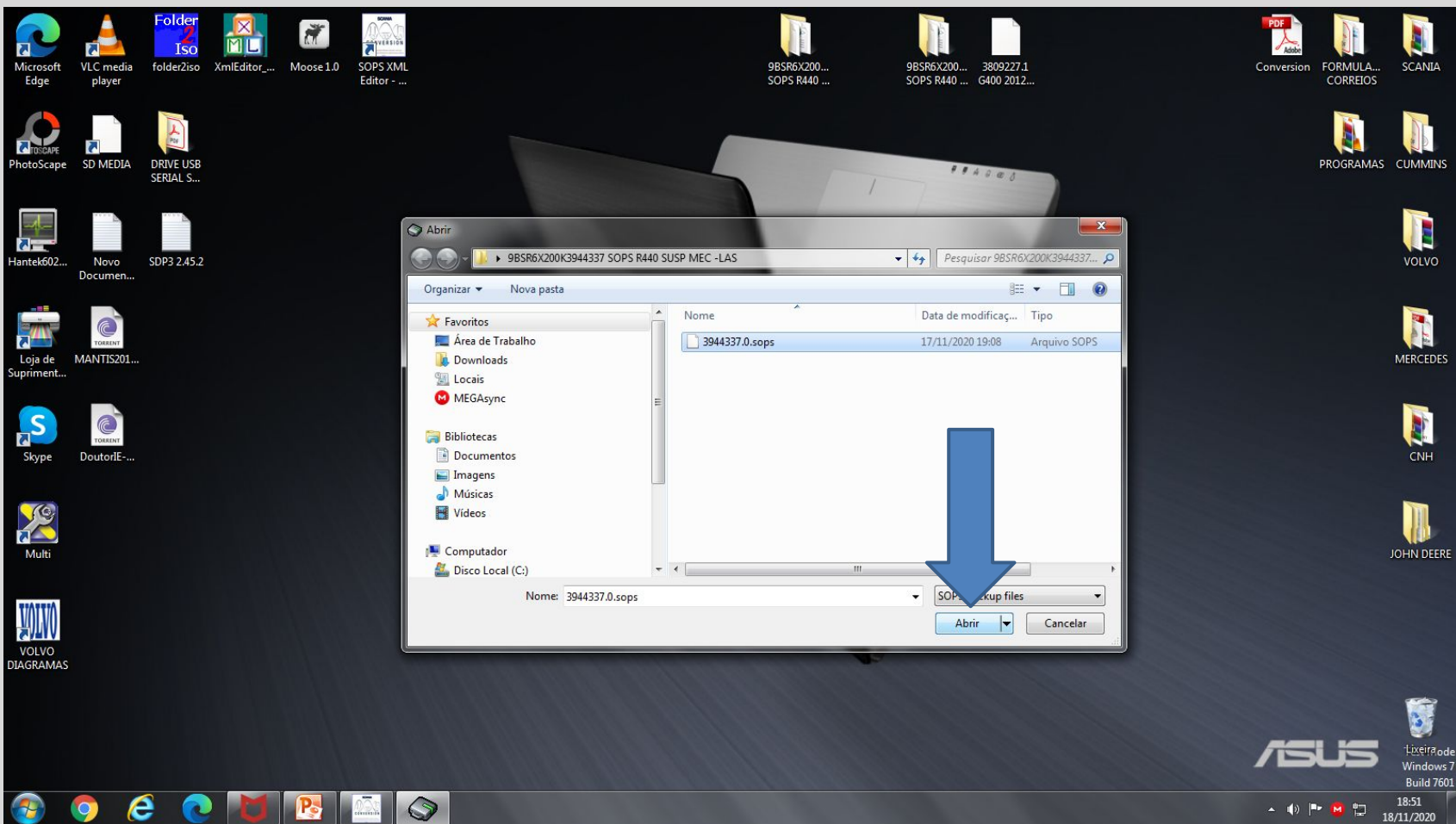
SOPS EDITOR

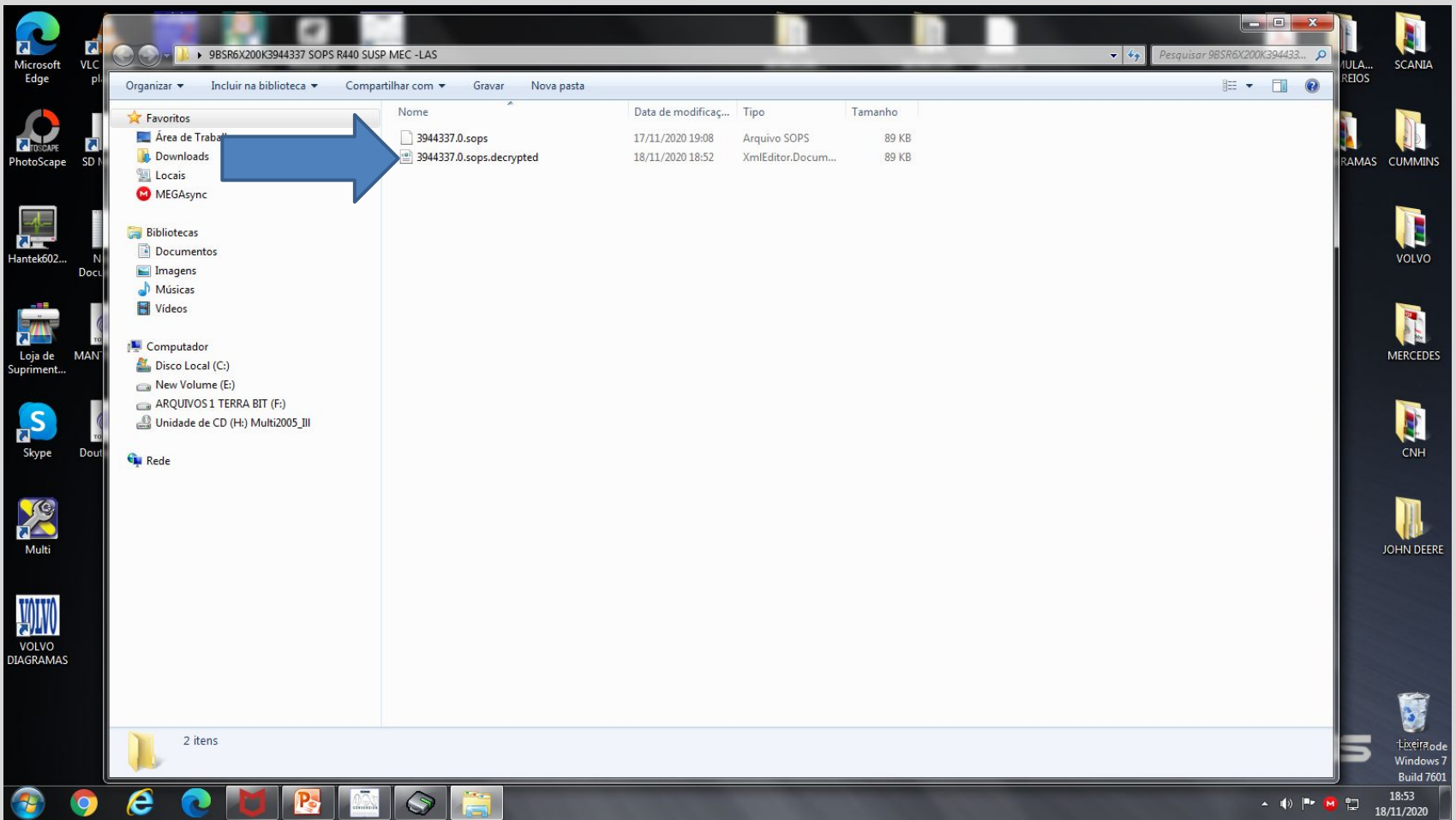


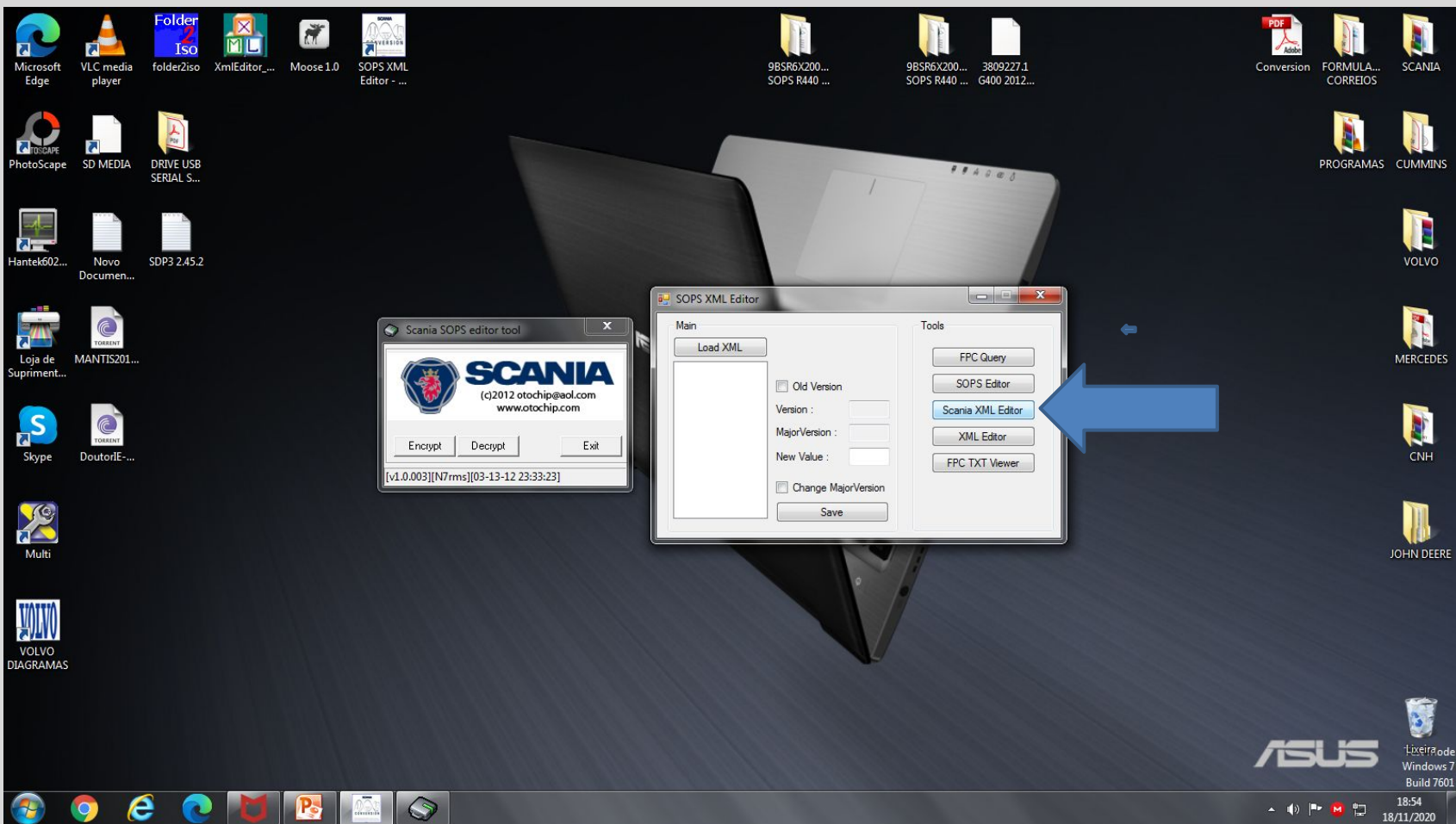


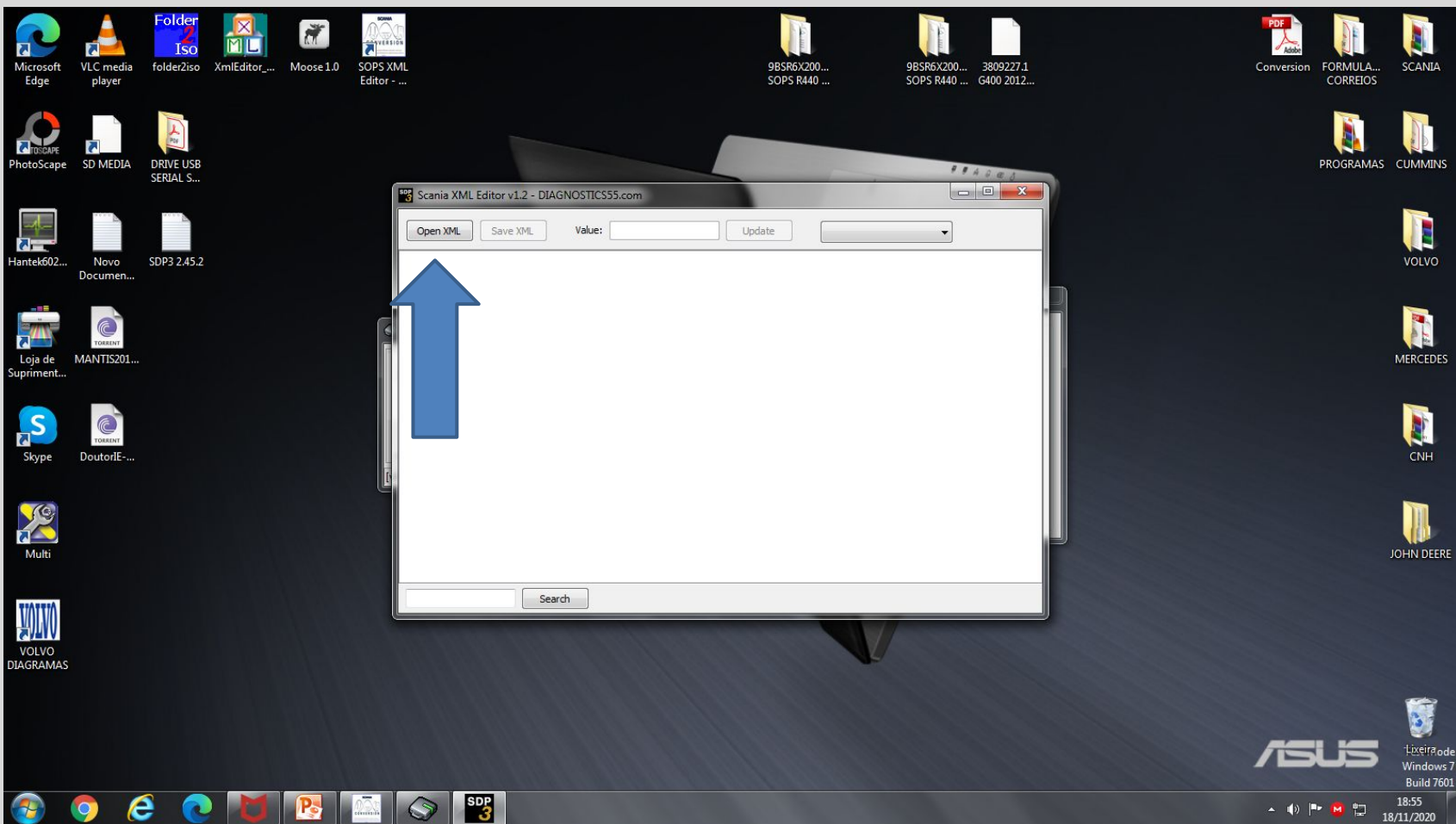


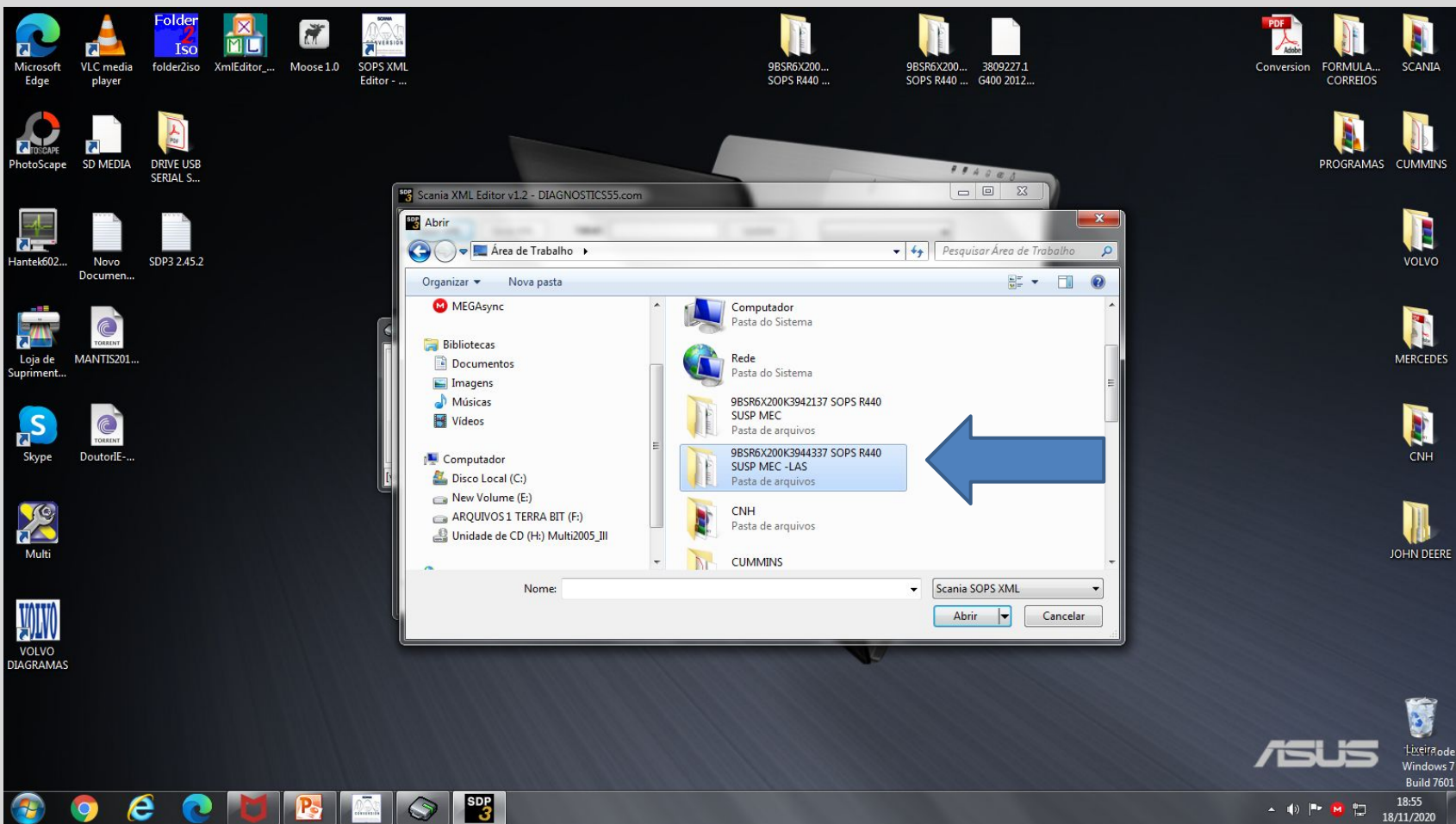


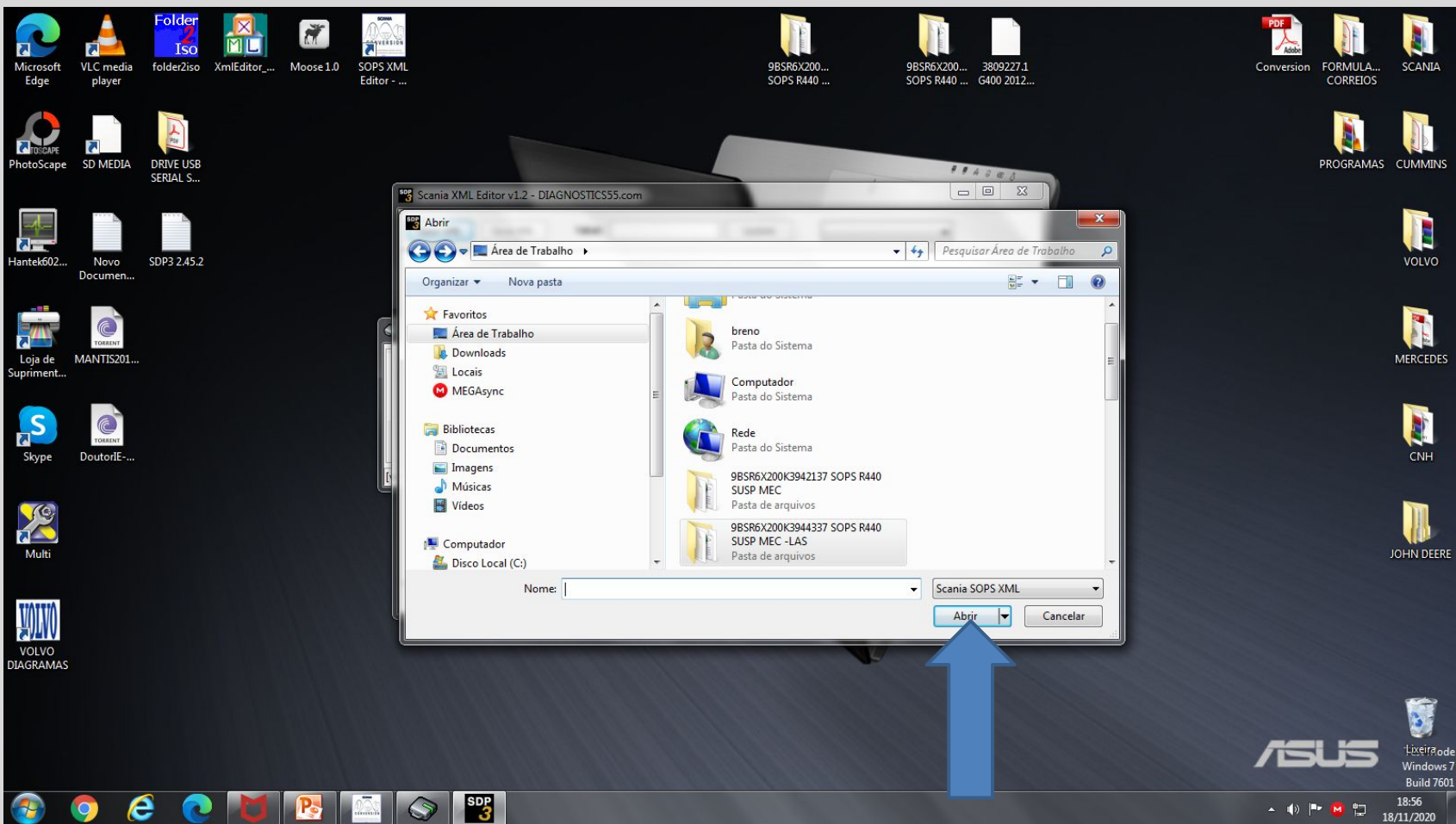


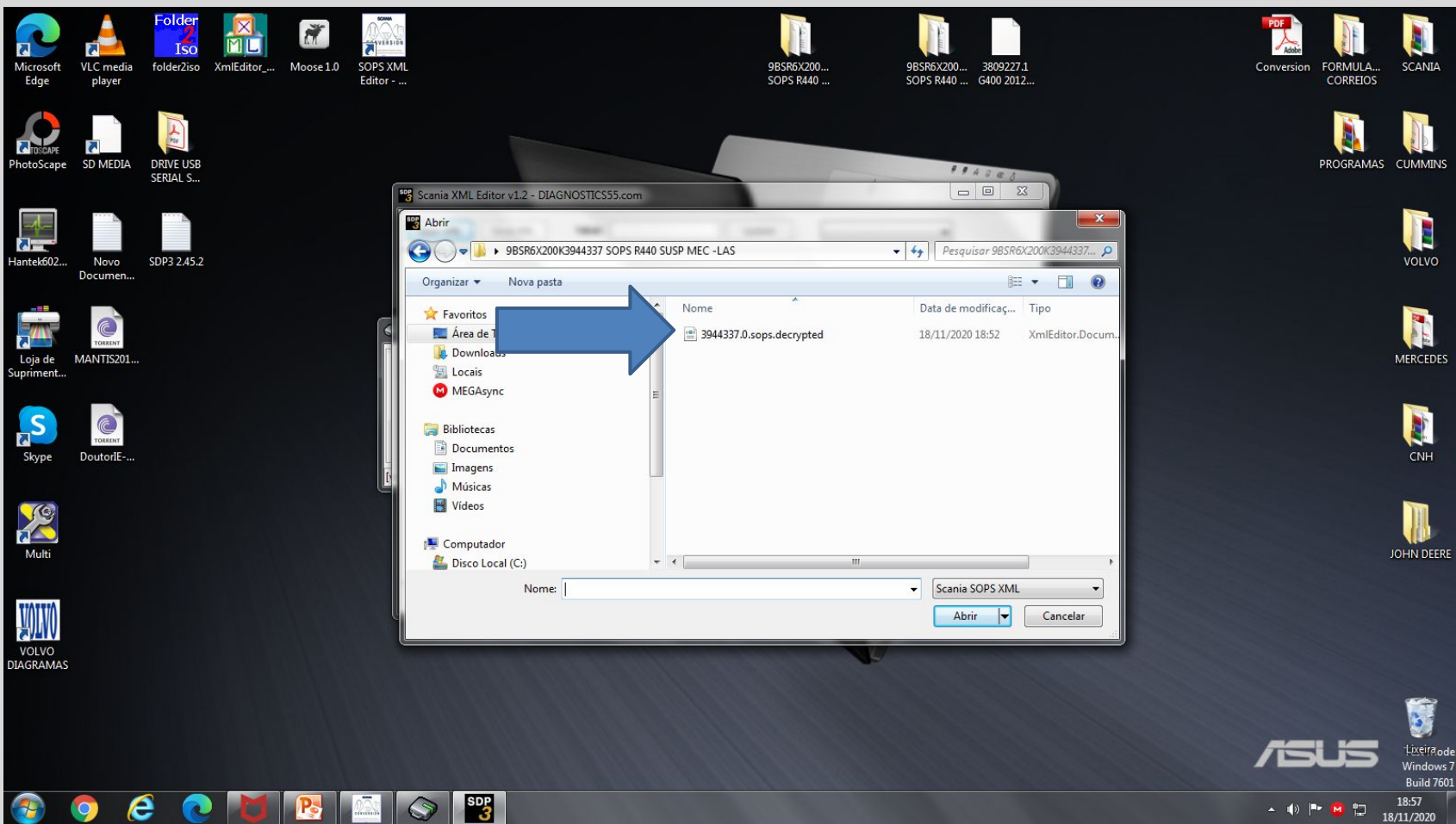


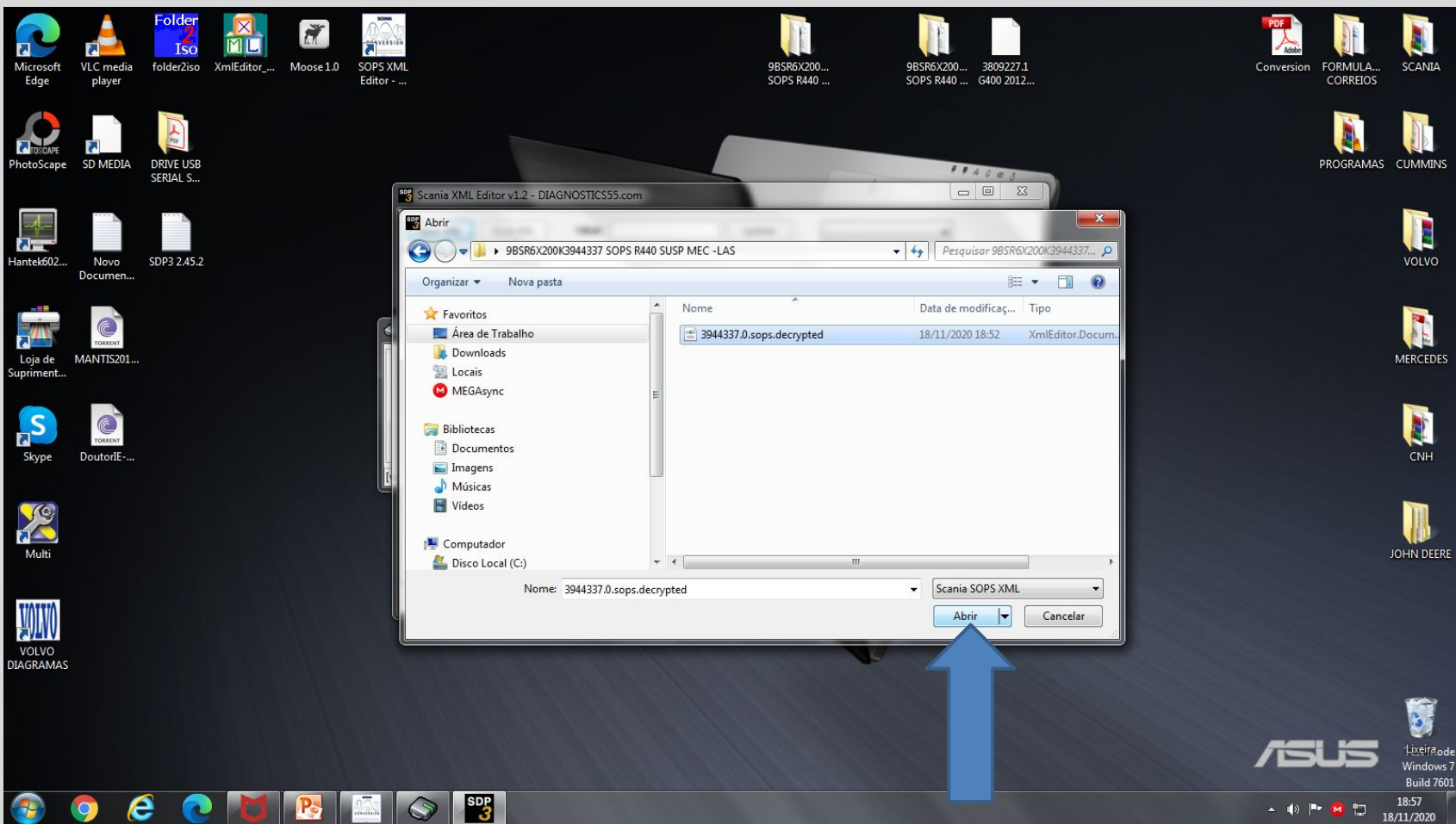


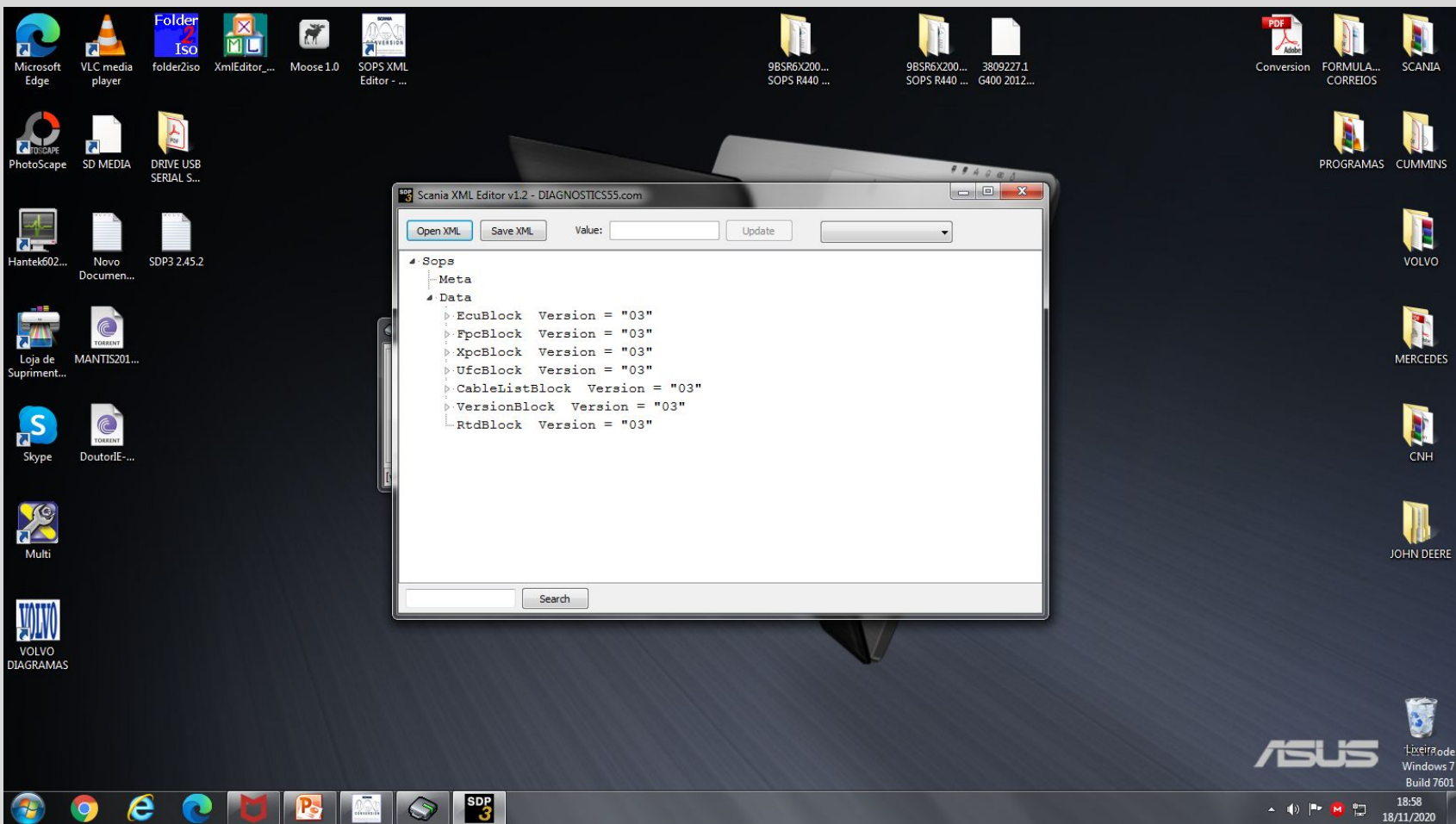


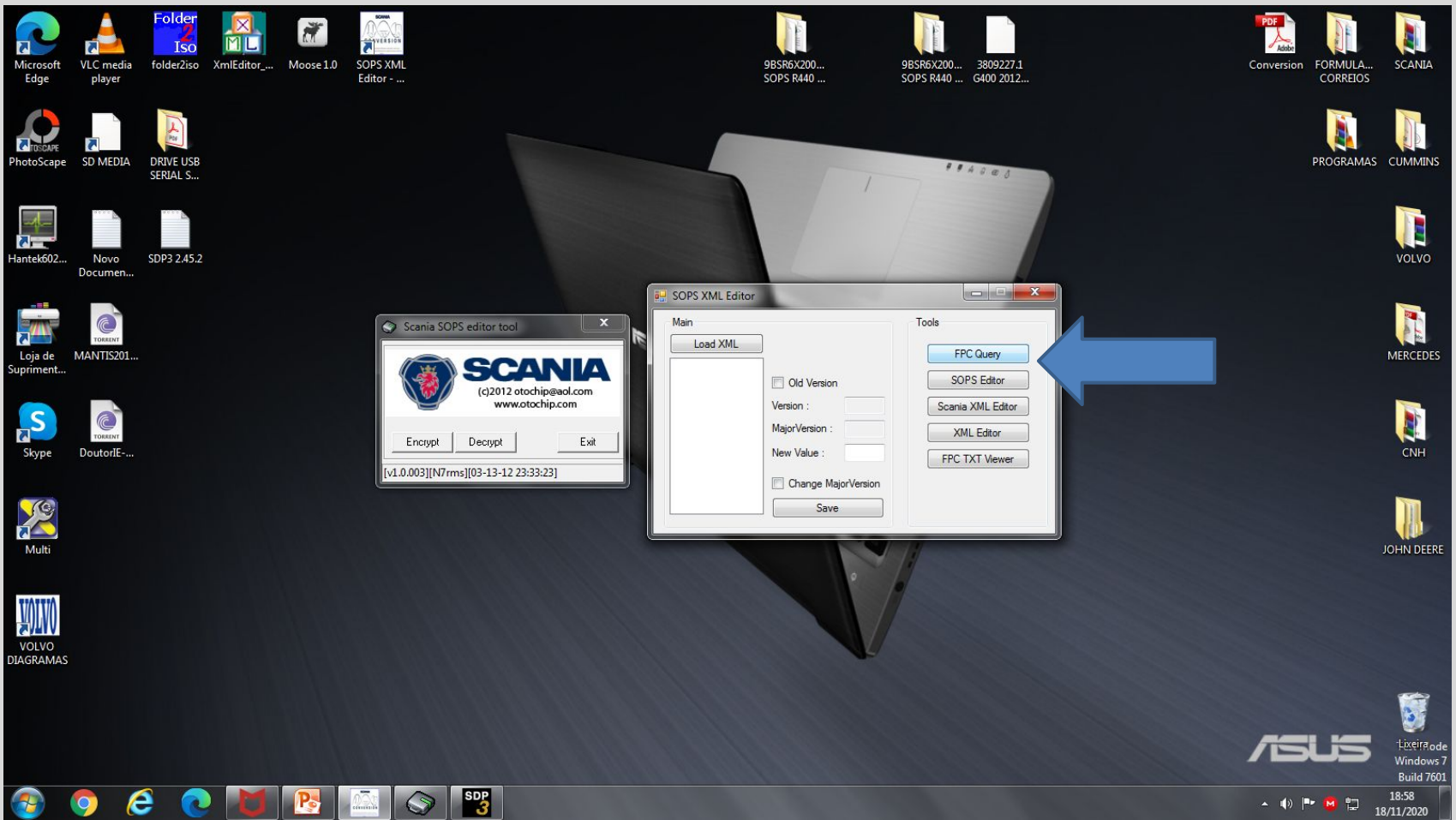






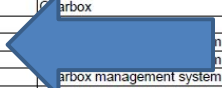


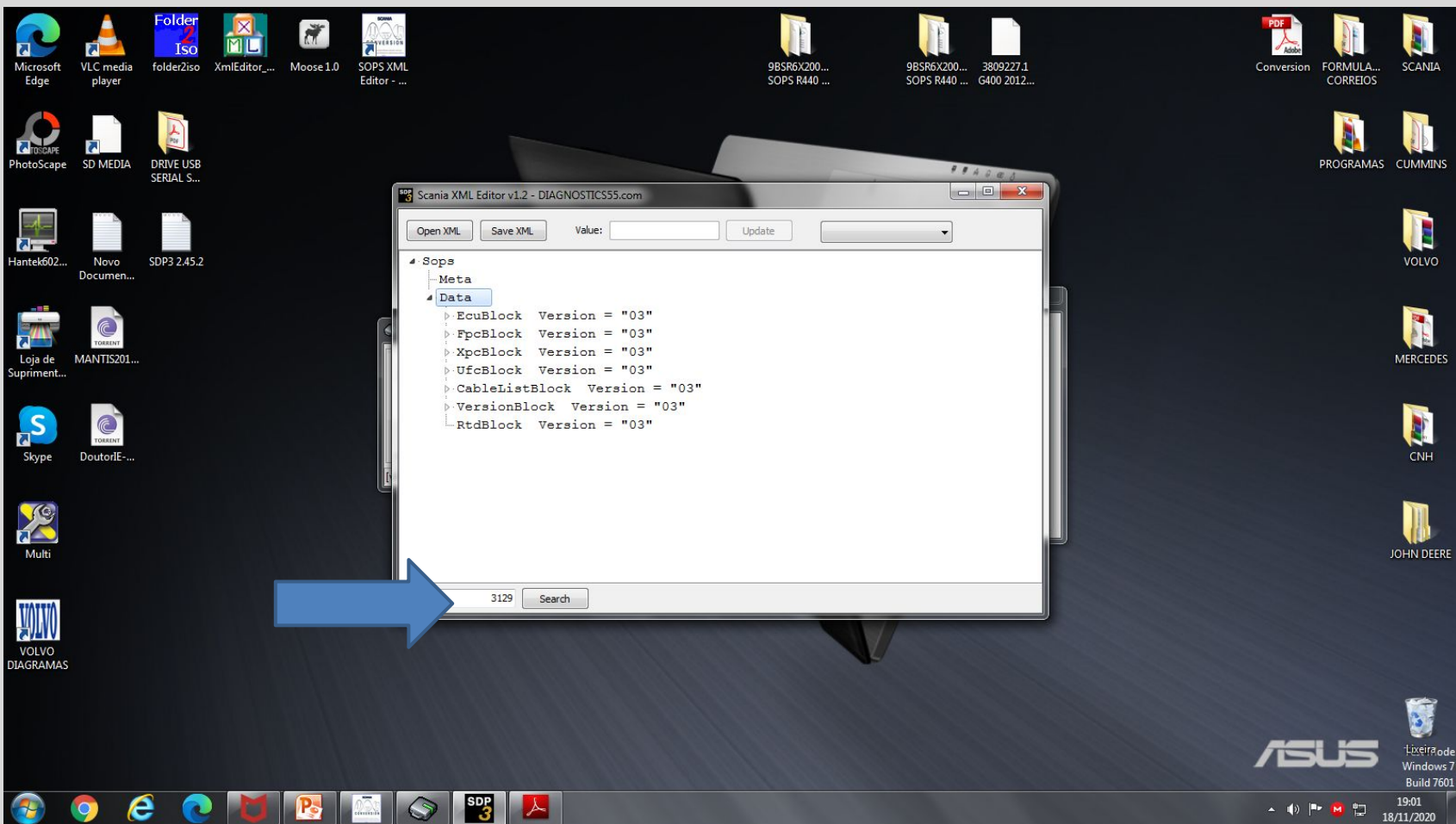


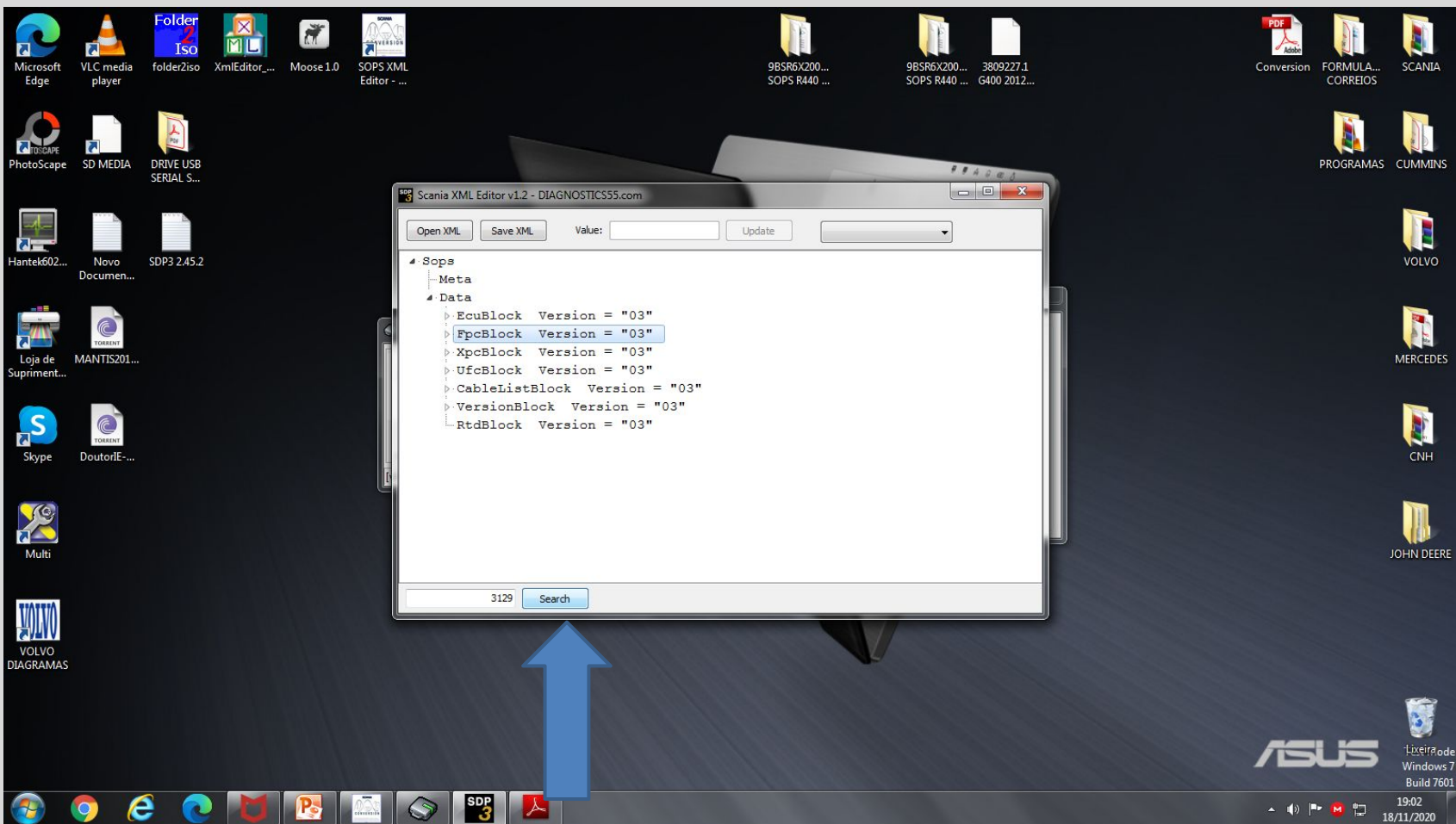


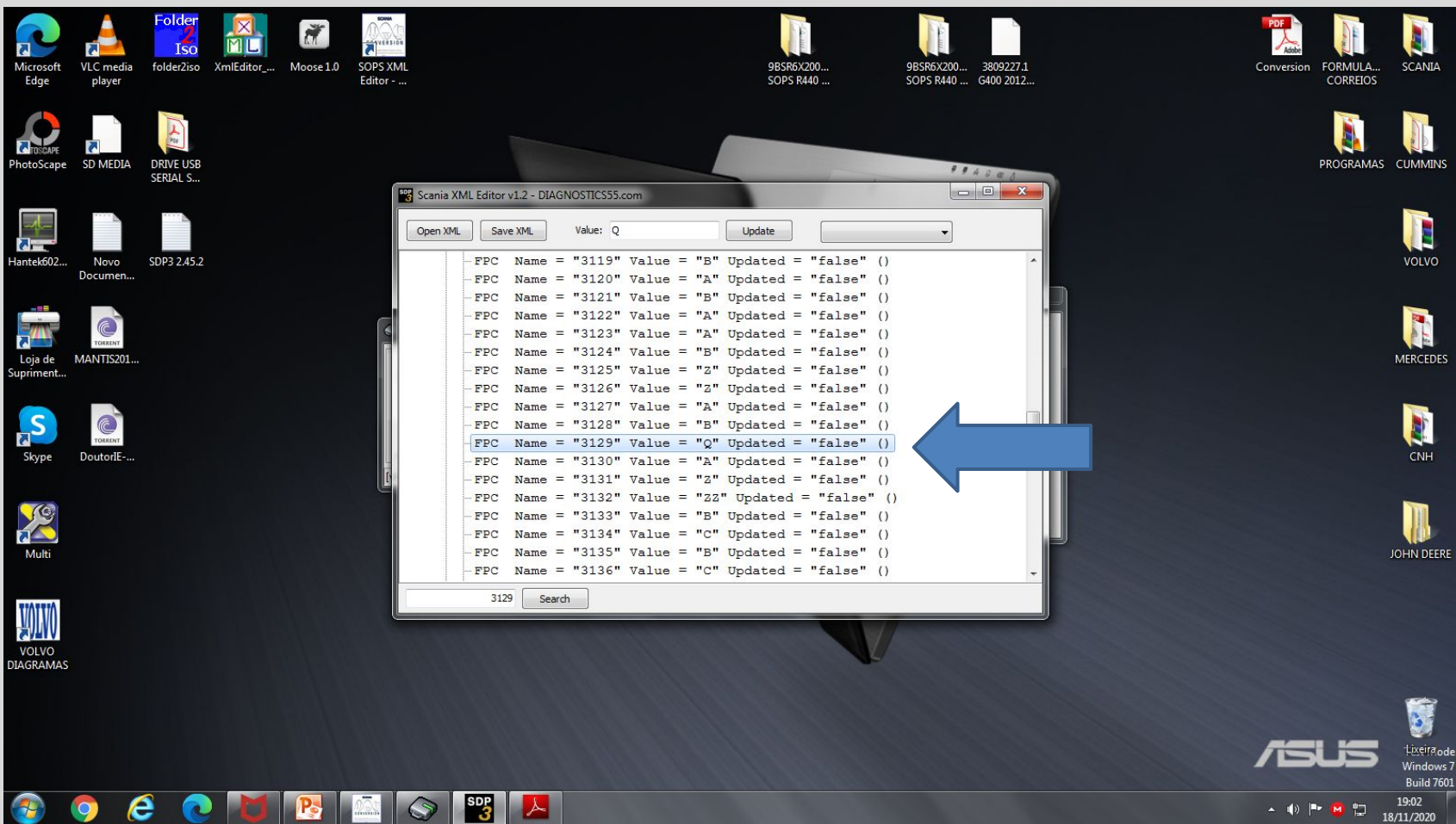
Fpc_Query

17	Gearbox	Gearbox	UP	6HP504C N /5
17	Gearbox	Gearbox	UQ	5HP594C N /5
17	Gearbox	Gearbox	UR	6HP594C N /5
17	Gearbox	Gearbox	US	5HP504C N/80 /5
17	Gearbox	Gearbox	UT	6HP504C N/80 /5
17	Gearbox	Gearbox	UU	5HP594C N/80 /5
17	Gearbox	Gearbox	UV	6HP594C N/80 /5
17	Gearbox	Gearbox	UX	5HP604C N /5
17	Gearbox	Gearbox	VA	5HP604C N/80 /5
17	Gearbox	Gearbox	VB	6HP604C N/80 /5
17	Gearbox	Gearbox	VL	6HP604C N/5 E0
17	Gearbox	Gearbox	VM	5HP604C N C
3129	Gearbox management system	Gearbox management system	A	OPC3
3129	Gearbox management system	Gearbox management system	B	ZF1
3129	Gearbox management system	Gearbox management system	C	Voith1
3129	Gearbox management system	Gearbox management system	D	OPC4
3129	Gearbox management system	Gearbox management system	E	Allison1
3129	Gearbox management system	Gearbox management system	F	Allison+4
3129	Gearbox management system	Gearbox management system	G	ZF2
3129	Gearbox management system	Gearbox management system	H	CS1
3129	Gearbox management system	Gearbox management system	J	OPC5
3129	Gearbox management system	Gearbox management system	L	CS2
3129	Gearbox management system	Gearbox management system	Z	without
3130	Gearbox management system environment	Gearbox management system environment	A	I
3130	Gearbox management system environment	Gearbox management system environment	B	1(ZF)
3508	Gearbox max input torque/ratio	Gearbox max input torque/ratio	AA	GRS900/R L01
3508	Gearbox max input torque/ratio	Gearbox max input torque/ratio	AB	GRS920/R L01
3508	Gearbox max input torque/ratio	Gearbox max input torque/ratio	AC	GRSO900/R L01
3508	Gearbox max input torque/ratio	Gearbox max input torque/ratio	AD	GRS890/R L01
3508	Gearbox max input torque/ratio	Gearbox max input torque/ratio	AE	
3508	Gearbox max input torque/ratio	Gearbox max input torque/ratio	AF	GR801/R L01
3508	Gearbox max input torque/ratio	Gearbox max input torque/ratio	AG	GR801/R B01
3508	Gearbox max input torque/ratio	Gearbox max input torque/ratio	AH	GRS905/R L01
3508	Gearbox max input torque/ratio	Gearbox max input torque/ratio	AJ	GRSO905/R L01
3508	Gearbox max input torque/ratio	Gearbox max input torque/ratio	AK	
3508	Gearbox max input torque/ratio	Gearbox max input torque/ratio	AL	GRS895/R L01
3508	Gearbox max input torque/ratio	Gearbox max input torque/ratio	AM	GR875/R L01
3508	Gearbox max input torque/ratio	Gearbox max input torque/ratio	AN	GR875/R B01
3508	Gearbox max input torque/ratio	Gearbox max input torque/ratio	AP	
3508	Gearbox max input torque/ratio	Gearbox max input torque/ratio	AQ	
3508	Gearbox max input torque/ratio	Gearbox max input torque/ratio	AT	
3508	Gearbox max input torque/ratio	Gearbox max input torque/ratio	AU	





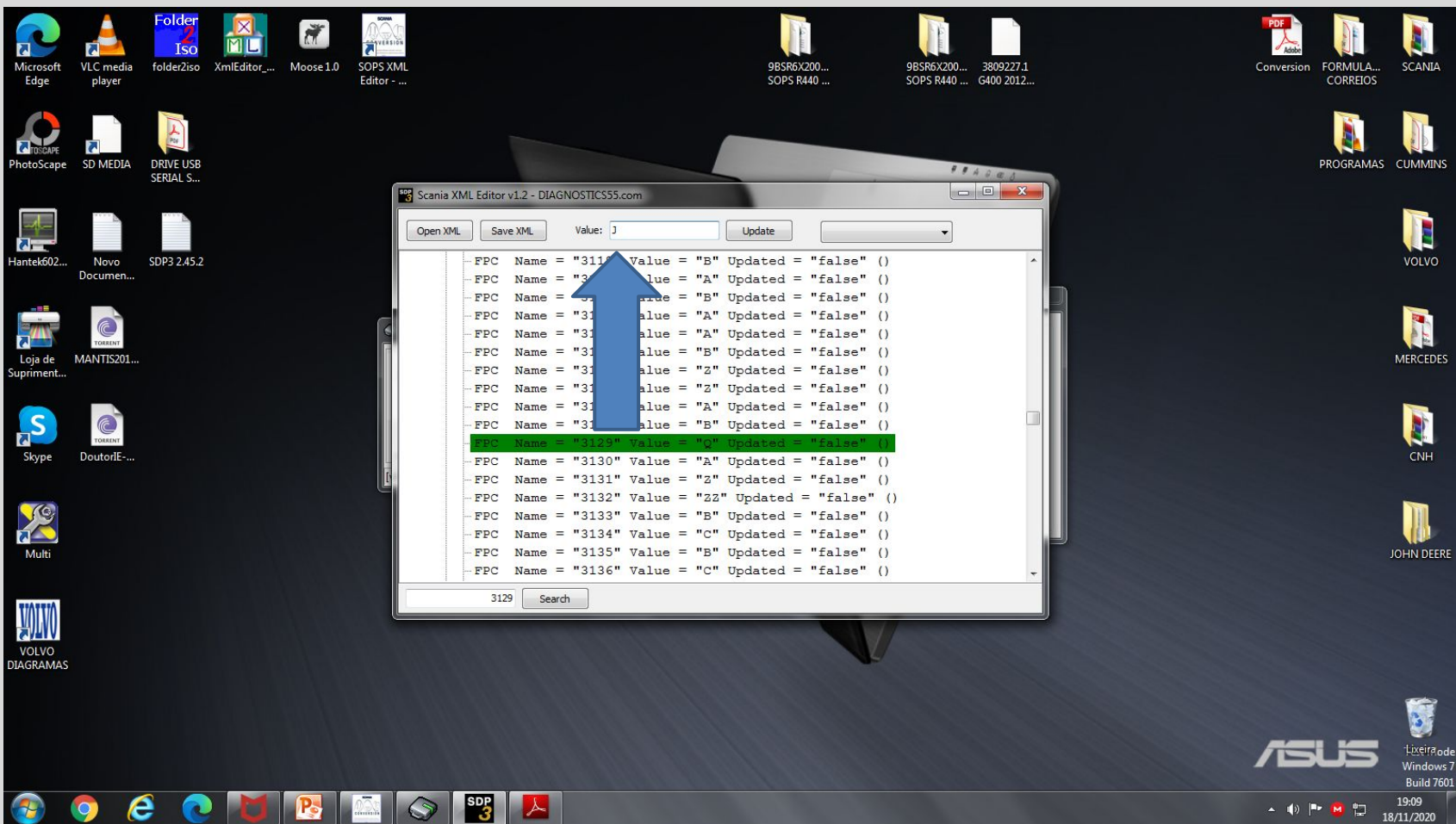




Fpc_Query

17	Gearbox	Gearbox	UP	6HP504C N /5
17	Gearbox	Gearbox	UQ	5HP594C N /5
17	Gearbox	Gearbox	UR	6HP594C N /5
17	Gearbox	Gearbox	US	5HP504C N/80 /5
17	Gearbox	Gearbox	UT	6HP504C N/80 /5
17	Gearbox	Gearbox	UU	5HP594C N/80 /5
17	Gearbox	Gearbox	UV	6HP594C N/80 /5
17	Gearbox	Gearbox	UX	5HP604C N /5
17	Gearbox	Gearbox	VA	5HP604C N/80 /5
17	Gearbox	Gearbox	VB	6HP604C N/80 /5
17	Gearbox	Gearbox	VL	6HP604C N/5 E0
17	Gearbox	Gearbox	VM	5HP604C N C
3129	Gearbox management system	Gearbox management system	A	OPC3
3129	Gearbox management system	Gearbox management system	B	ZF1
3129	Gearbox management system	Gearbox management system	C	Voith1
3129	Gearbox management system	Gearbox management system	D	OPC4
3129	Gearbox management system	Gearbox management system	E	Allison1
3129	Gearbox management system	Gearbox management system	F	Allison+4
3129	Gearbox management system	Gearbox management system	G	ZF2
3129	Gearbox management system	Gearbox management system	H	CS1
3129	Gearbox management system	Gearbox management system	I	OPC5
3129	Gearbox management system	Gearbox management system	L	CS2
3129	Gearbox management system	Gearbox management system	Z	without
3130	Gearbox management system environment	Gearbox management system environment	A	1
3130	Gearbox management system environment	Gearbox management system environment	B	1(ZF)
3508	Gearbox max input torque/ratio	Gearbox max input torque/ratio	AA	GRS900/R L01
3508	Gearbox max input torque/ratio	Gearbox max input torque/ratio	AB	GRS920/R L01
3508	Gearbox max input torque/ratio	Gearbox max input torque/ratio	AC	GRS0900/R L01
3508	Gearbox max input torque/ratio	Gearbox max input torque/ratio	AD	GRS890/R L01
3508	Gearbox max input torque/ratio	Gearbox max input torque/ratio	AE	
3508	Gearbox max input torque/ratio	Gearbox max input torque/ratio	AF	GR801/R L01
3508	Gearbox max input torque/ratio	Gearbox max input torque/ratio	AG	GR801/R B01
3508	Gearbox max input torque/ratio	Gearbox max input torque/ratio	AH	GRS905/R L01
3508	Gearbox max input torque/ratio	Gearbox max input torque/ratio	AJ	GRS0905/R L01
3508	Gearbox max input torque/ratio	Gearbox max input torque/ratio	AK	
3508	Gearbox max input torque/ratio	Gearbox max input torque/ratio	AL	GRS895/R L01
3508	Gearbox max input torque/ratio	Gearbox max input torque/ratio	AM	GR875/R L01
3508	Gearbox max input torque/ratio	Gearbox max input torque/ratio	AN	GR875/R B01
3508	Gearbox max input torque/ratio	Gearbox max input torque/ratio	AP	
3508	Gearbox max input torque/ratio	Gearbox max input torque/ratio	AQ	
3508	Gearbox max input torque/ratio	Gearbox max input torque/ratio	AT	
3508	Gearbox max input torque/ratio	Gearbox max input torque/ratio	AU	
3508	Gearbox max input torque/ratio	Gearbox max input torque/ratio	AX	GRS895/R B01
3508	Gearbox max input torque/ratio	Gearbox max input torque/ratio	AY	GRS0895/ GRS0895P (bus)





Scania XML Editor v1.2 - DIAGNOSTICS55.com

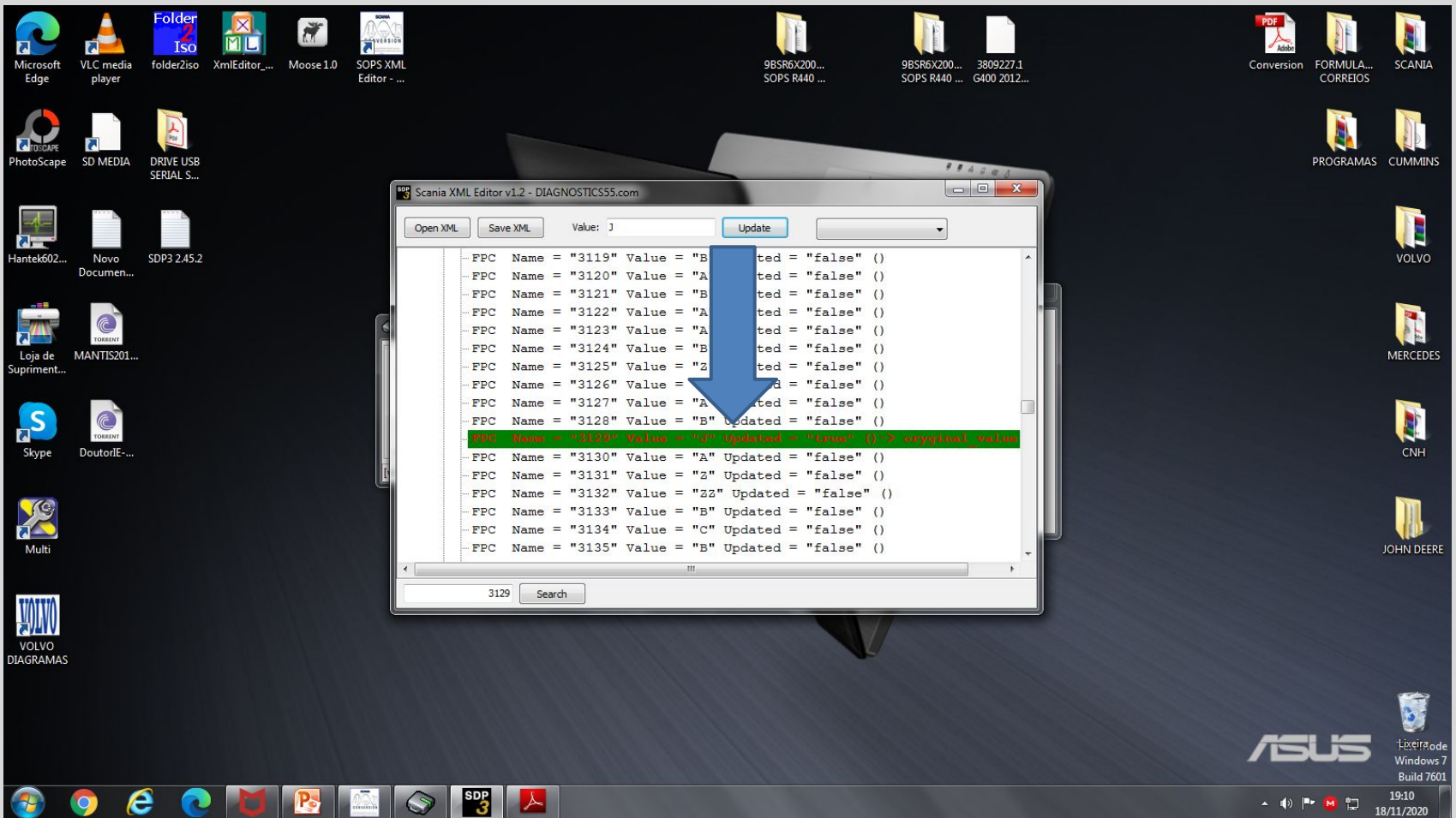
Open XML Save XML Value: J Update

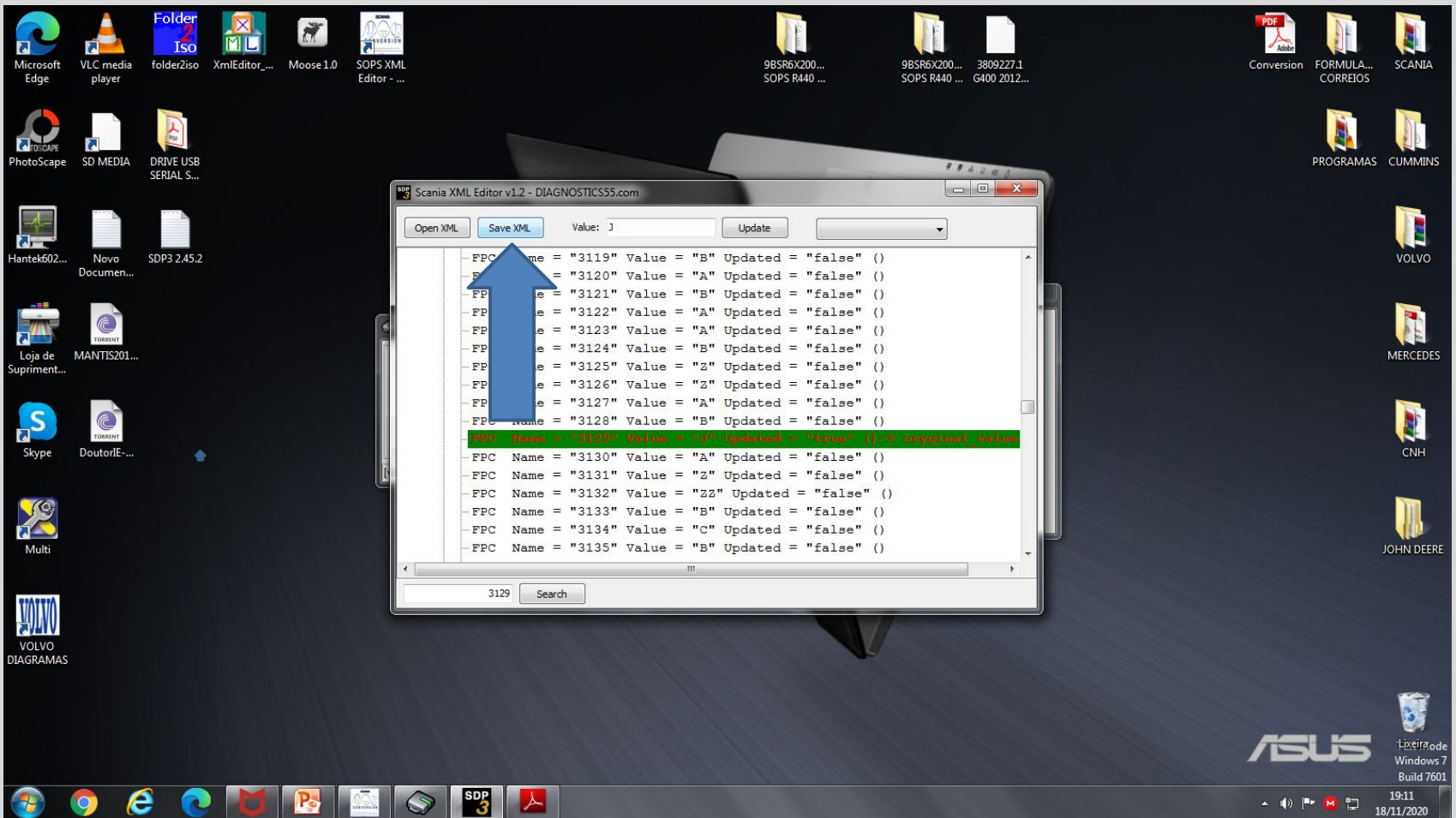
FPC Name = "3119"	Value = "B"	Updated = "false" ()
FPC Name = "3120"	Value = "A"	Updated = "false" ()
FPC Name = "3121"	Value = "B"	Updated = "false" ()
FPC Name = "3122"	Value = "A"	Updated = "false" ()
FPC Name = "3123"	Value = "A"	Updated = "false" ()
FPC Name = "3124"	Value = "B"	Updated = "false" ()
FPC Name = "3125"	Value = "Z"	Updated = "false" ()
FPC Name = "3126"	Value = "Z"	Updated = "false" ()
FPC Name = "3127"	Value = "A"	Updated = "false" ()
FPC Name = "3128"	Value = "B"	Updated = "false" ()
FPC Name = "3129"	Value = "Q"	Updated = "false" ()
FPC Name = "3130"	Value = "A"	Updated = "false" ()
FPC Name = "3131"	Value = "Z"	Updated = "false" ()
FPC Name = "3132"	Value = "ZZ"	Updated = "false" ()
FPC Name = "3133"	Value = "B"	Updated = "false" ()
FPC Name = "3134"	Value = "C"	Updated = "false" ()
FPC Name = "3135"	Value = "B"	Updated = "false" ()
FPC Name = "3136"	Value = "C"	Updated = "false" ()

3129 Search

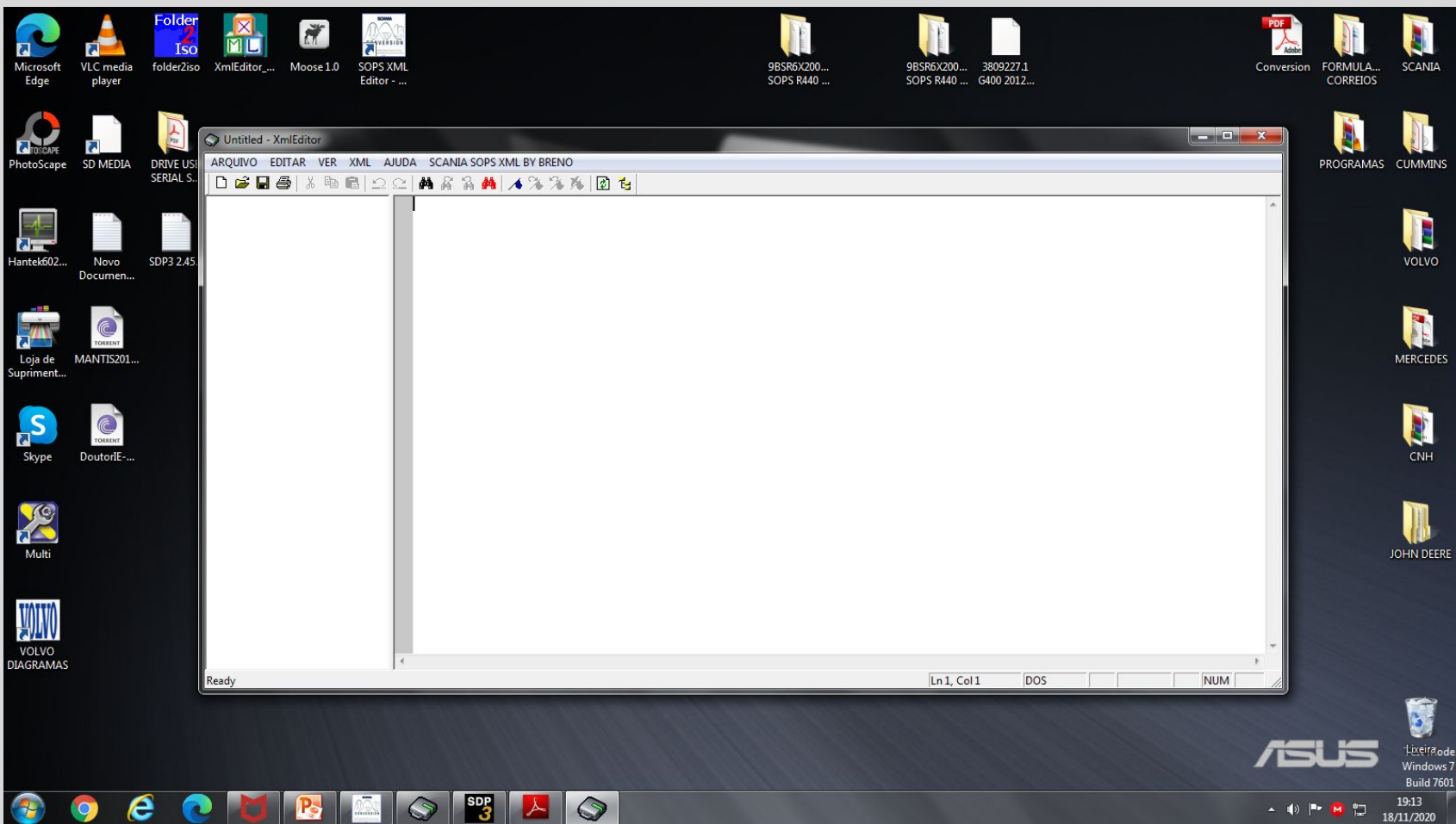
ASUS
Lixeira de
Windows 7
Build 7601

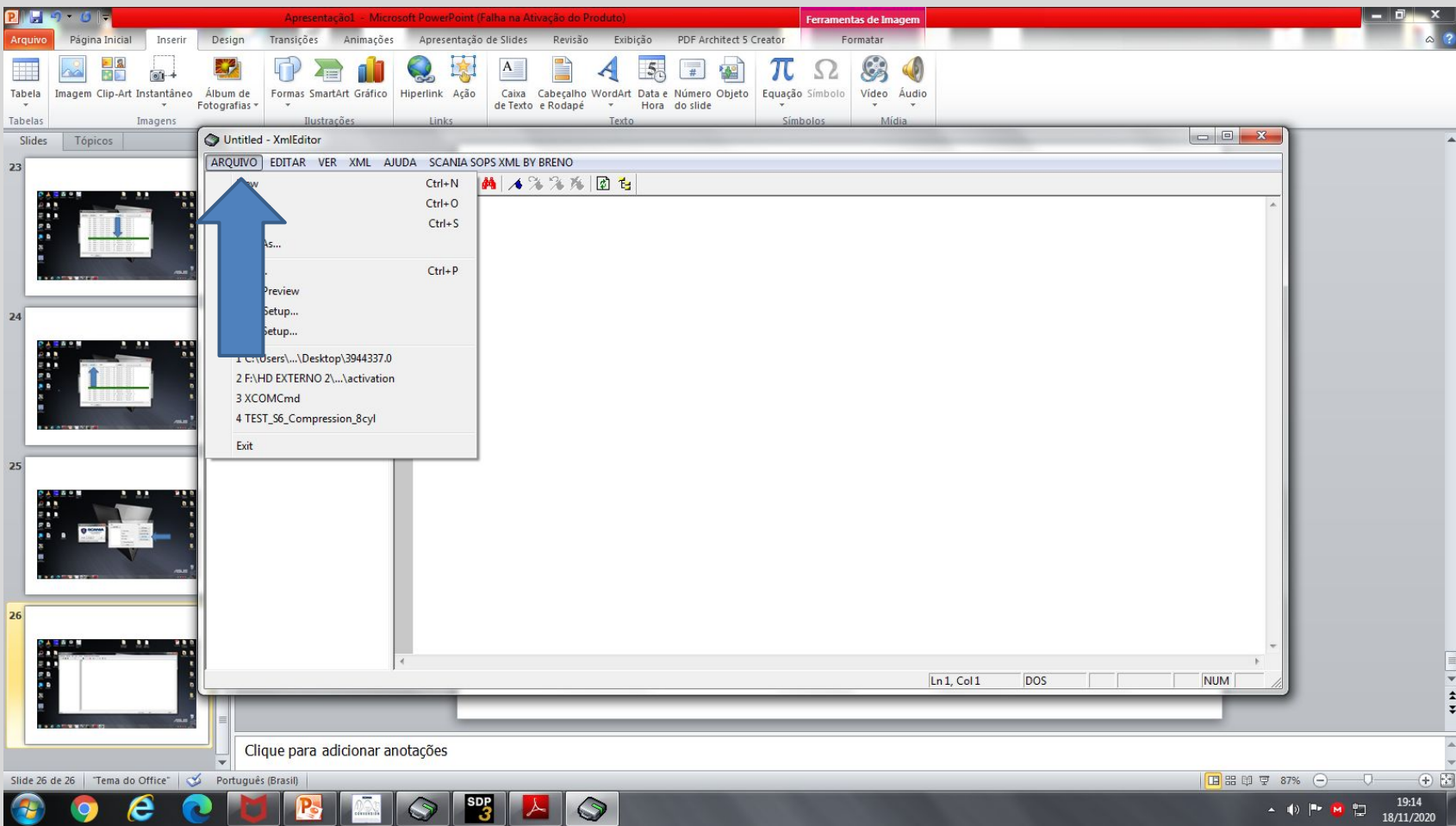
19:09
18/11/2020

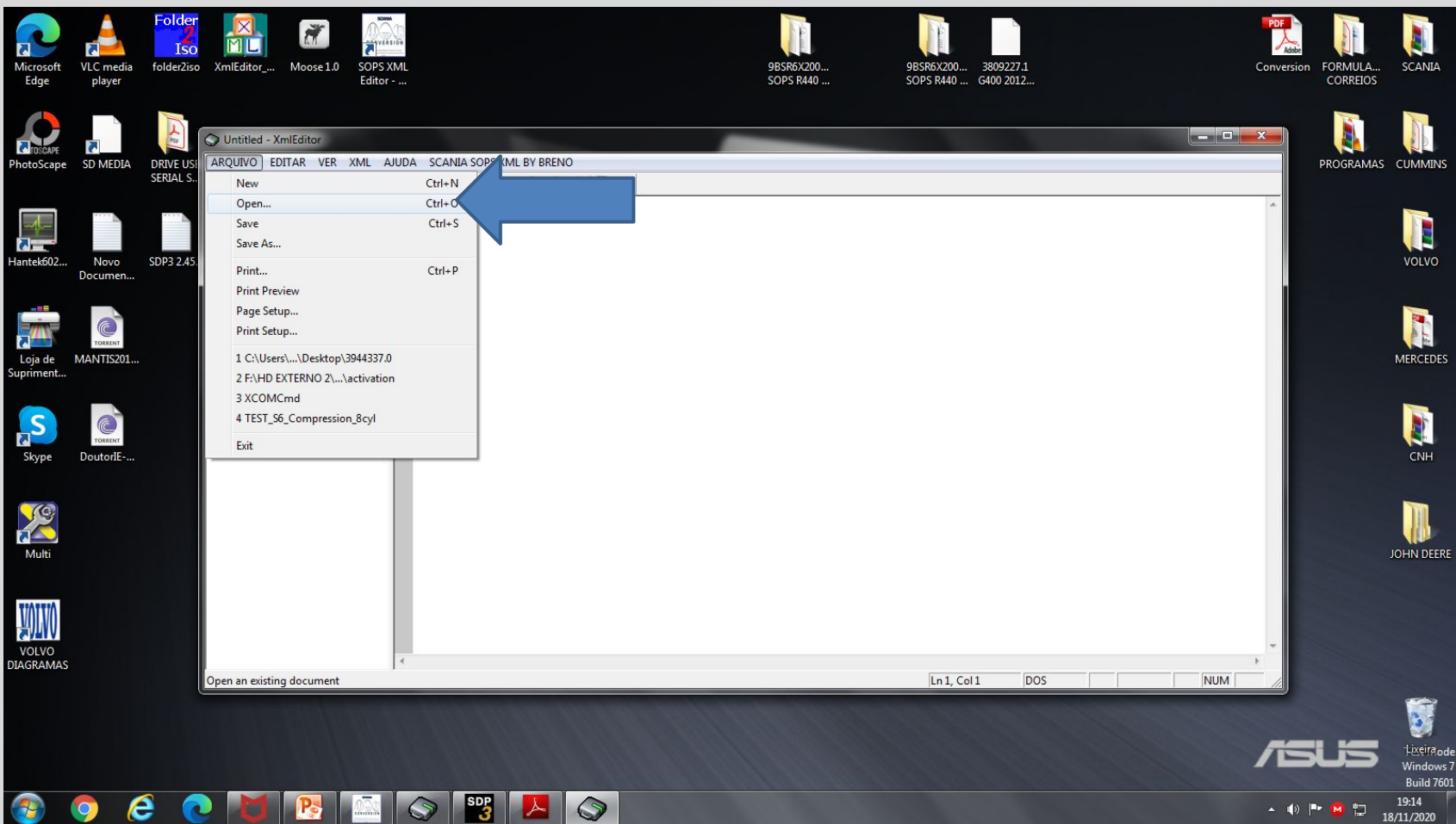


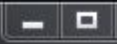












Open [Close]

Examinar: Área de Trabalho

Locais

Área de Trabalho

Bibliotecas

Computador

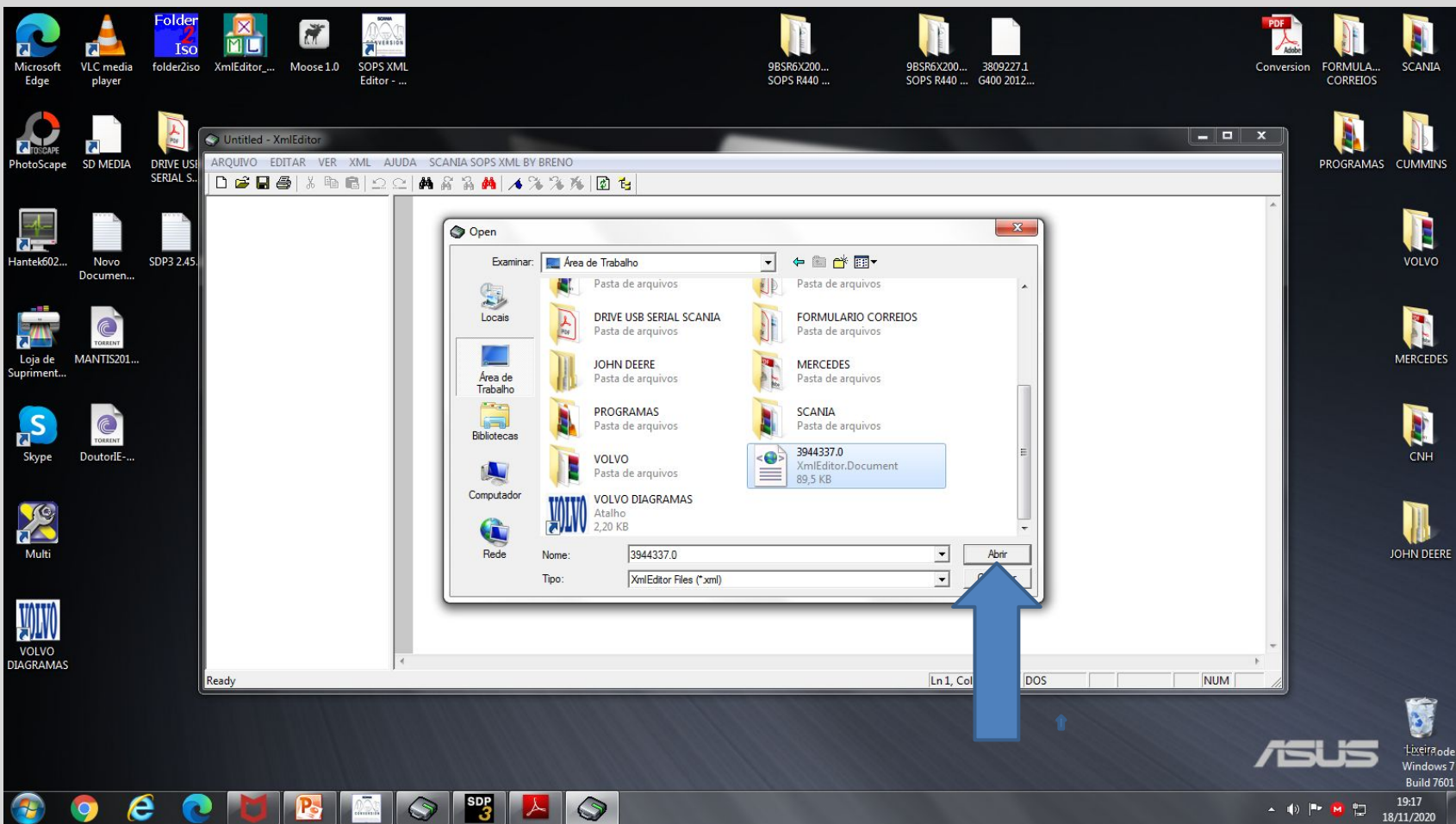
Rede

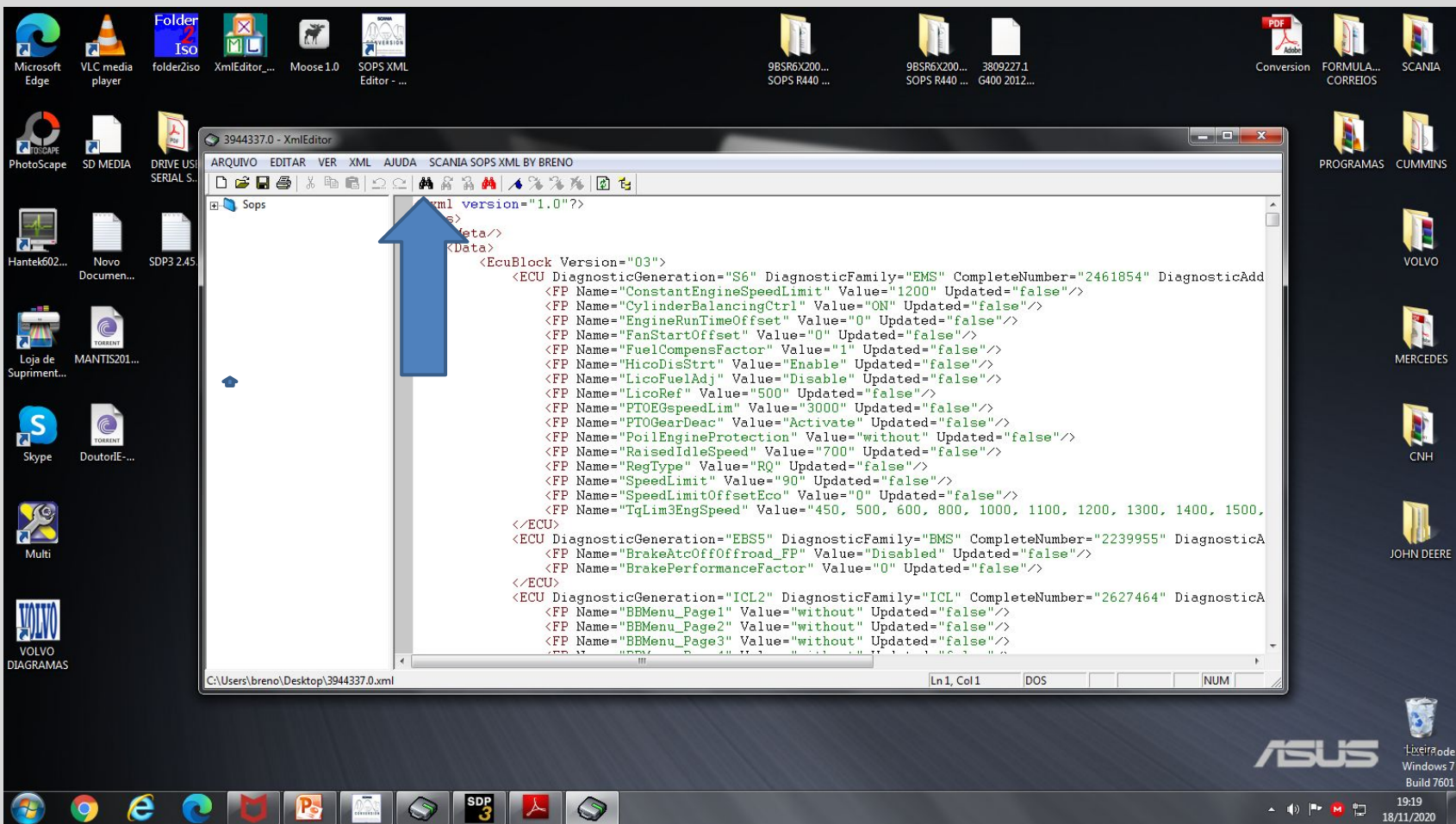
- Pasta de arquivos
- DRIVE USB SERIAL SCANIA
Pasta de arquivos
- JOHN DEERE
Pasta de arquivos
- PROGRAMAS
Pasta de arquivos
- VOLVO
Pasta de arquivos
- VOLVO DIAGRAMAS
Atalho
2,20 KB
- Pasta de arquivos
- FORMULARIO CORREIOS
Pasta de arquivos
- MERCEDES
Pasta de arquivos
- SCANIA
Pasta de arquivos
- 3944337.0**
XmlEditor.Document
89,5 KB

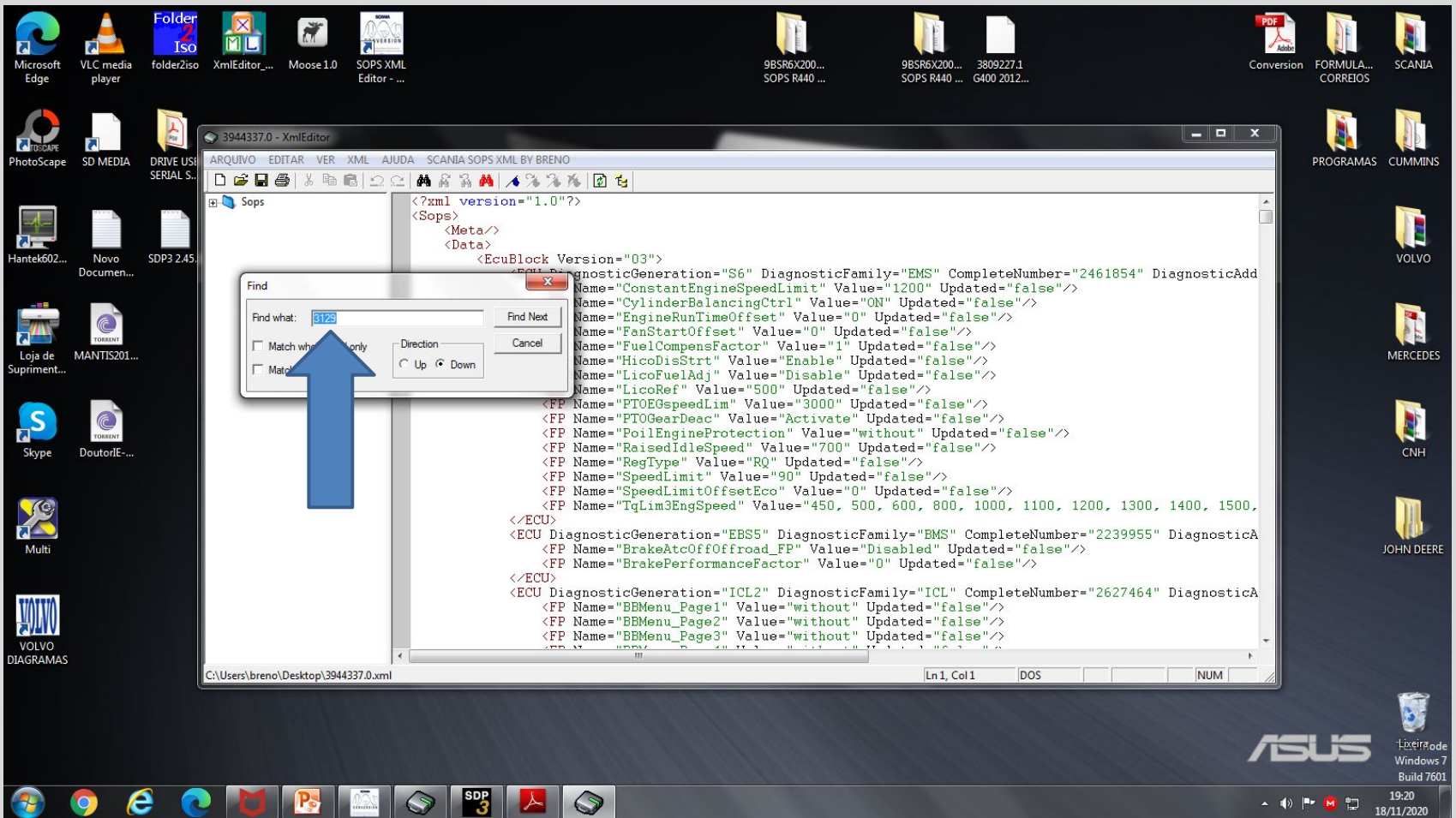
Nome: 3944337.0

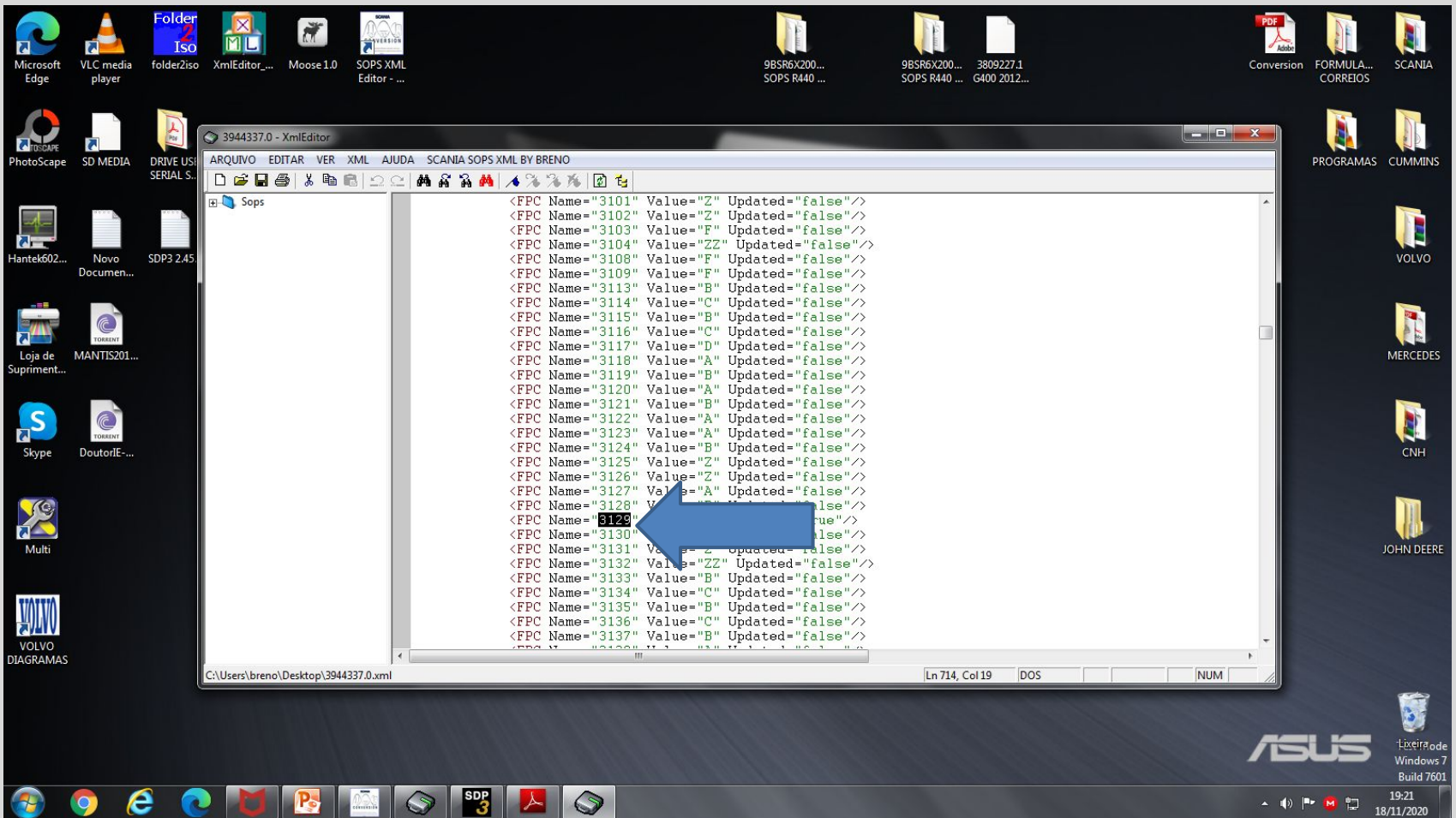
Tipo: XmlEditor Files (*.xml)

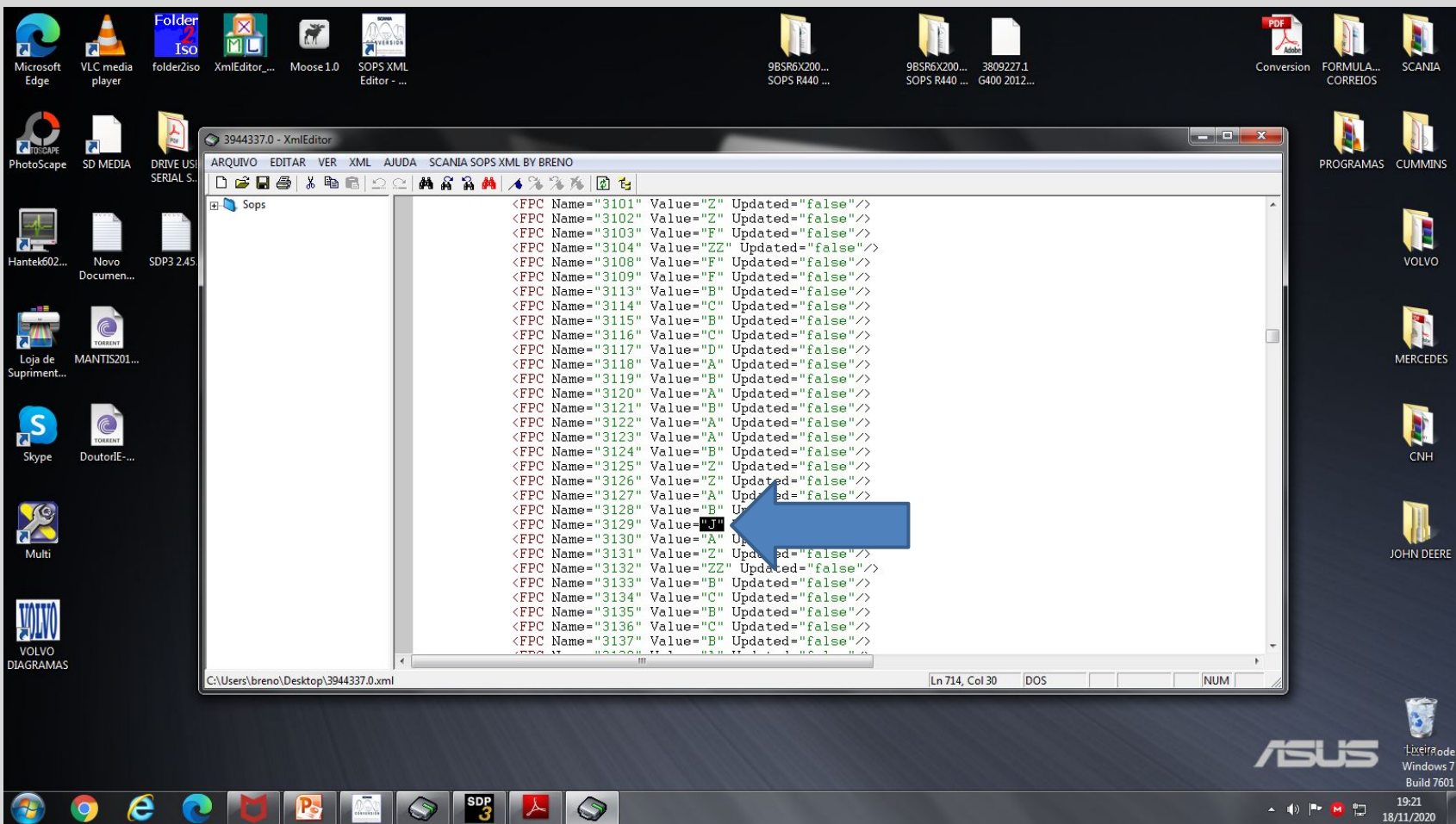
Abir Cancelar



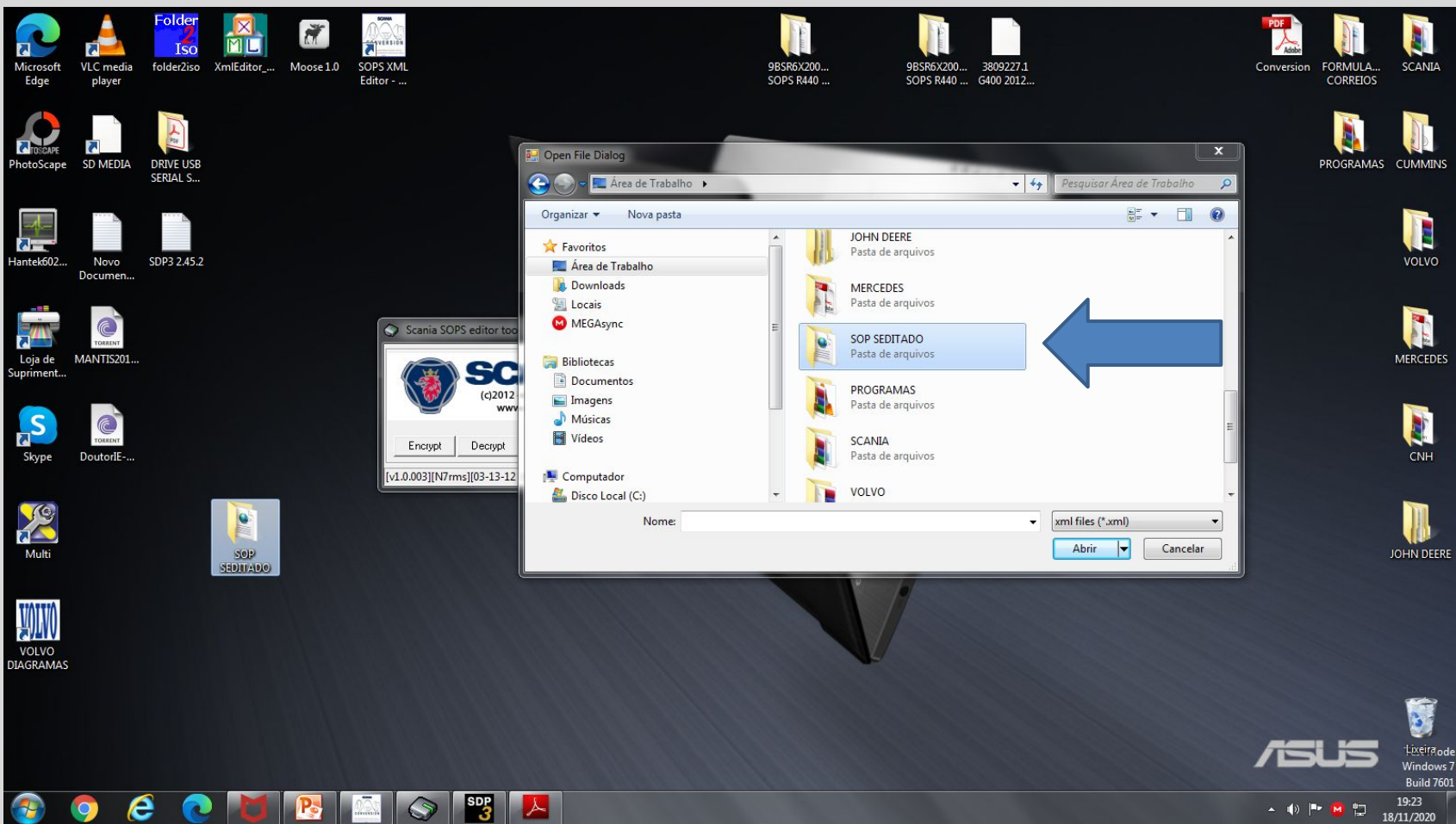


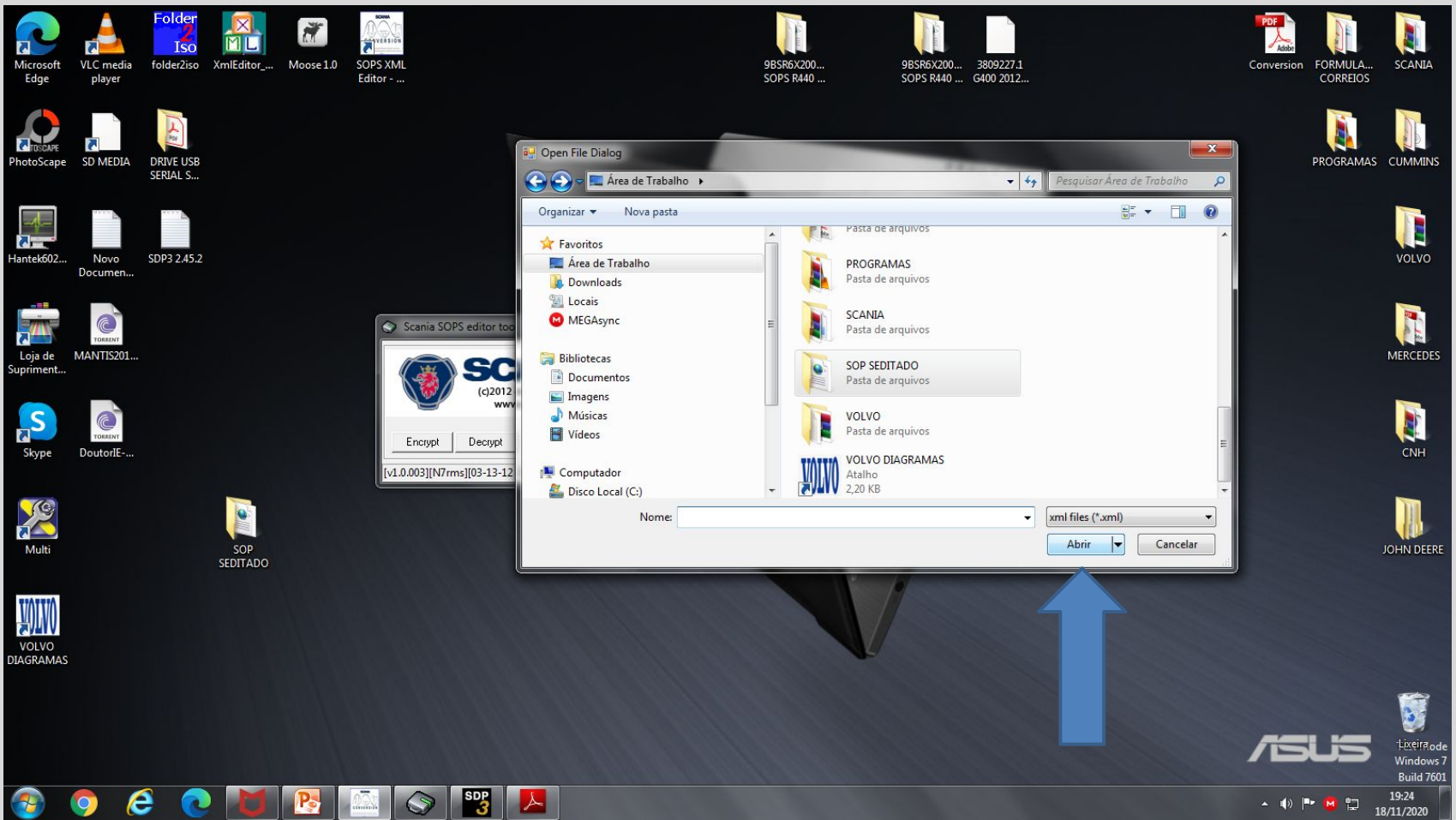


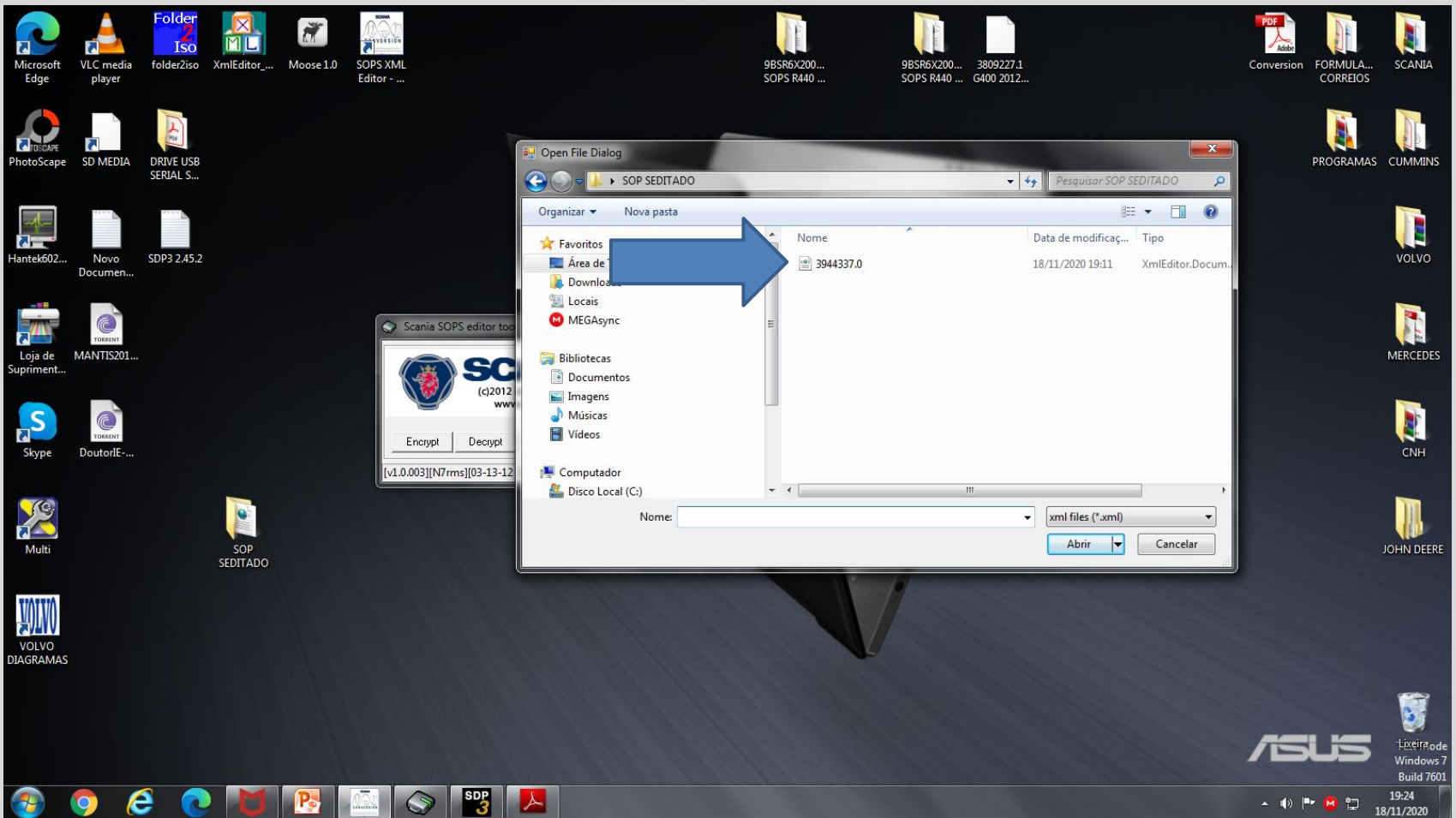


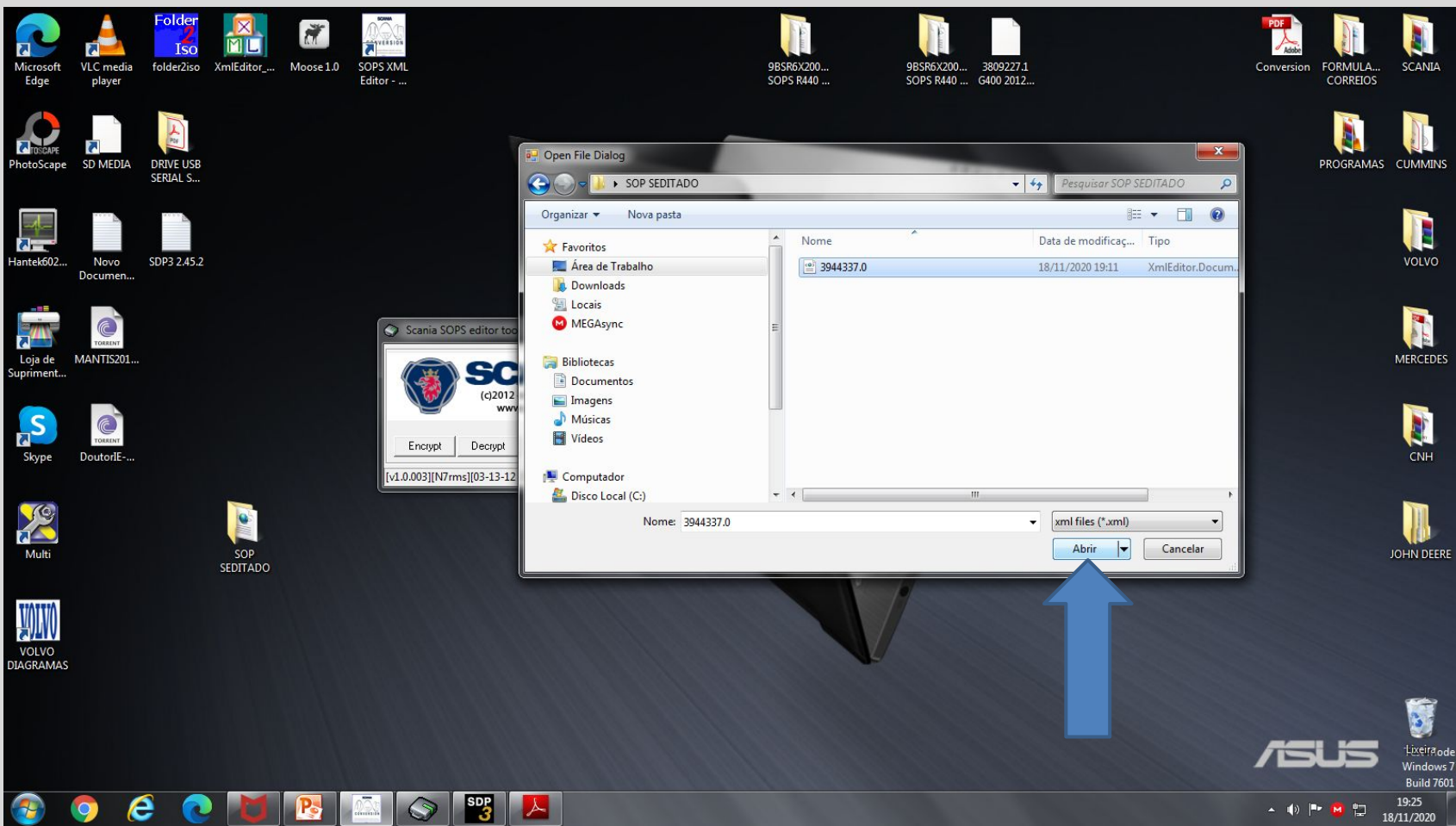


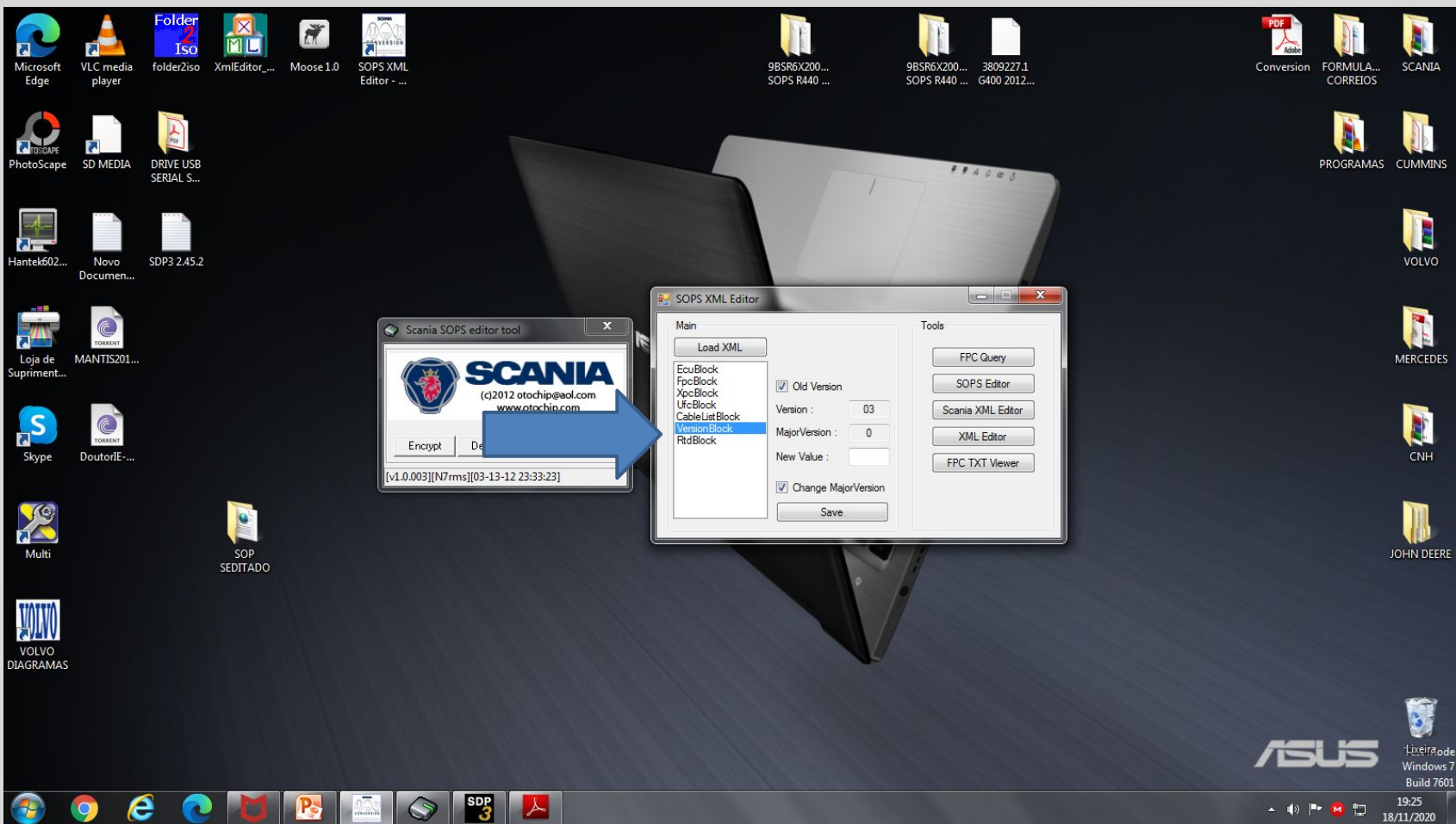


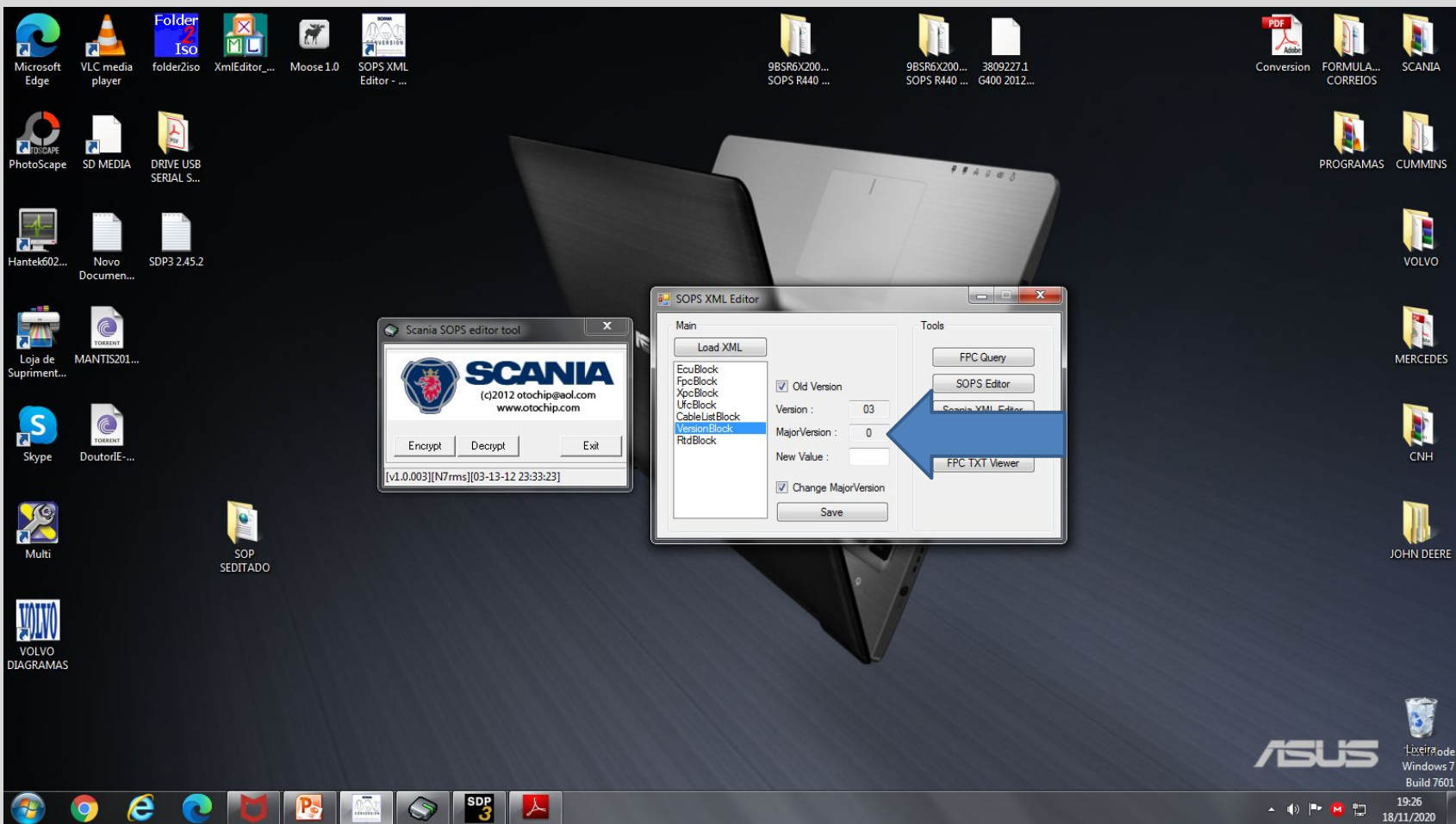


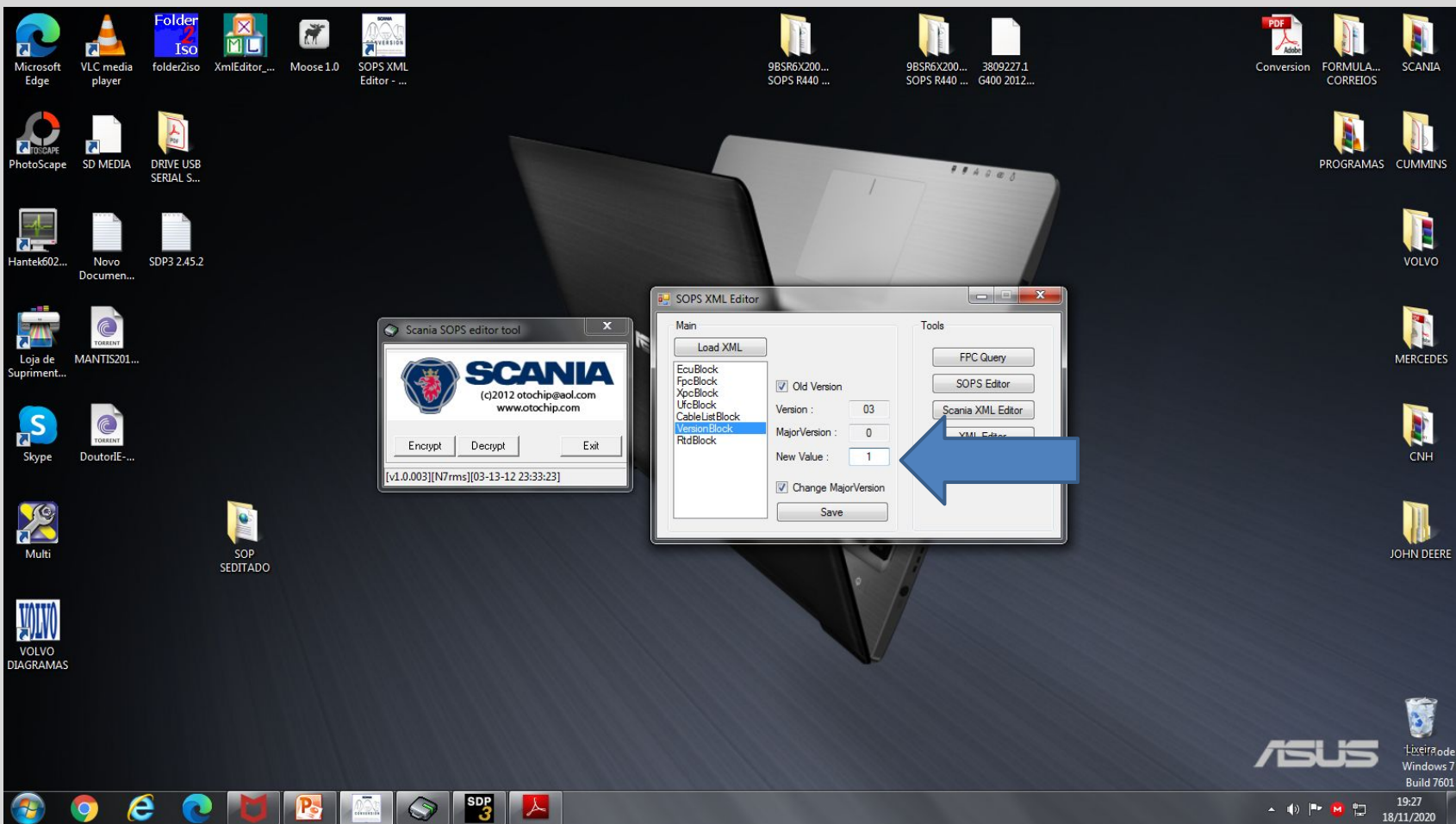


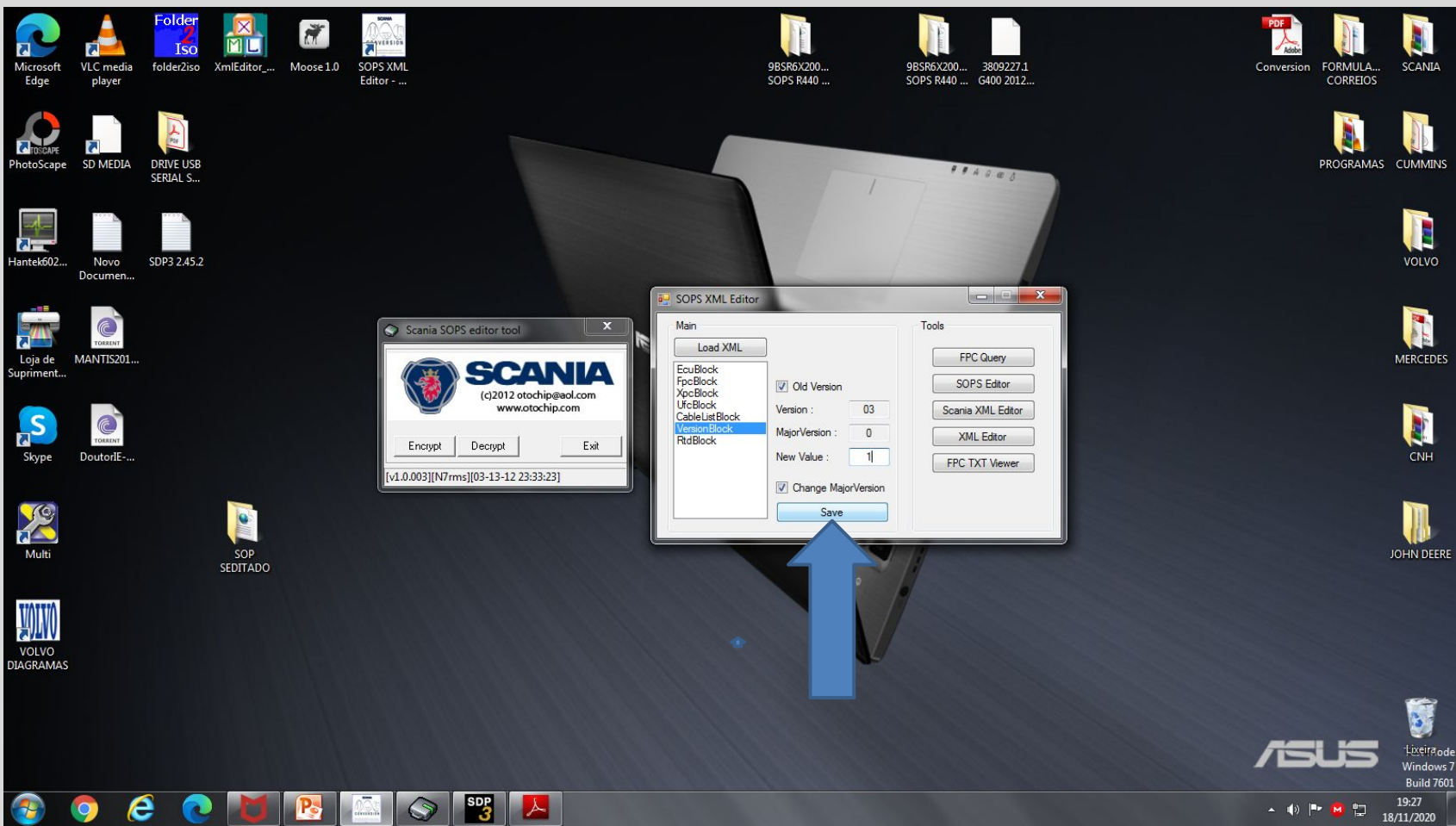


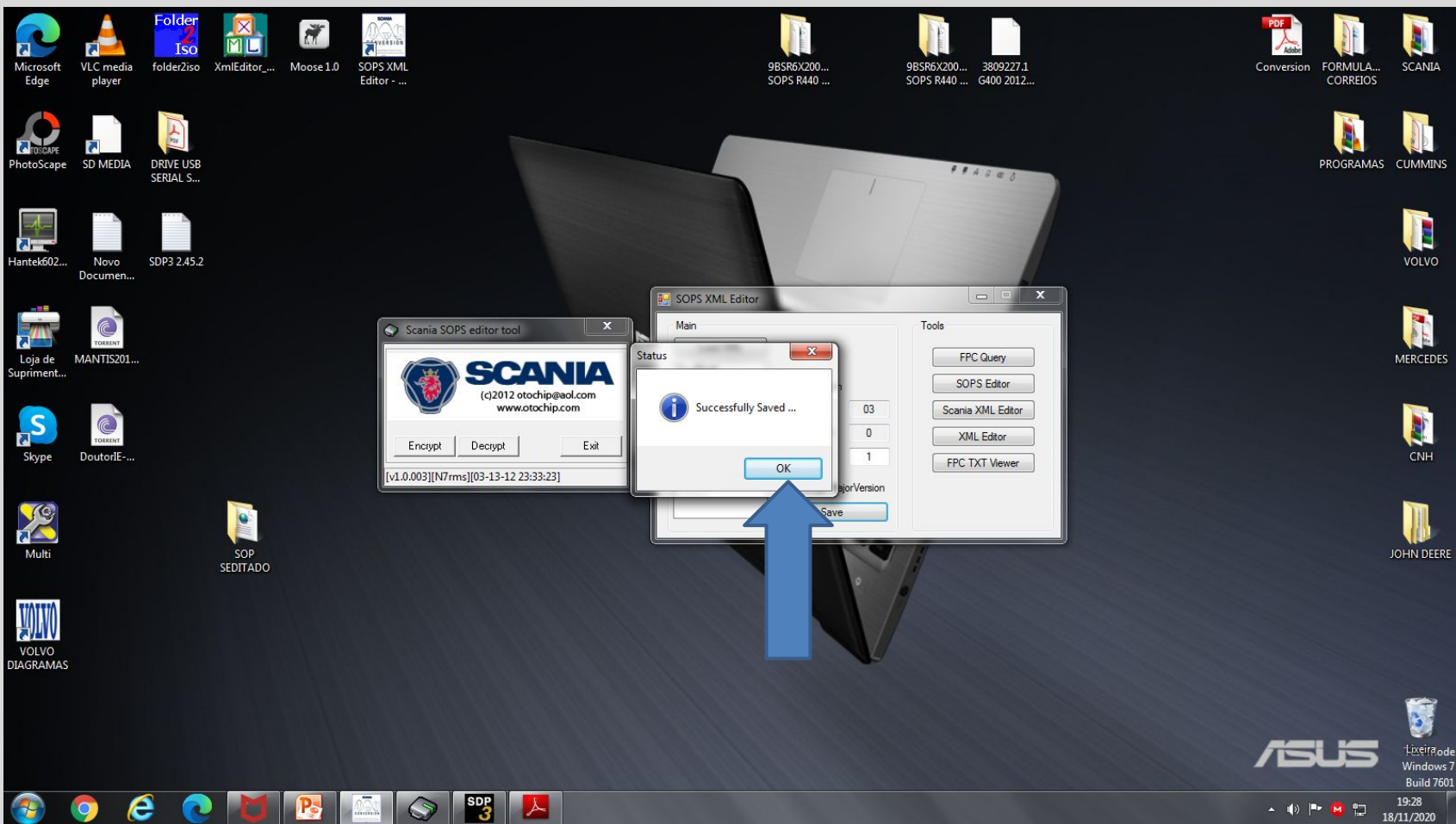


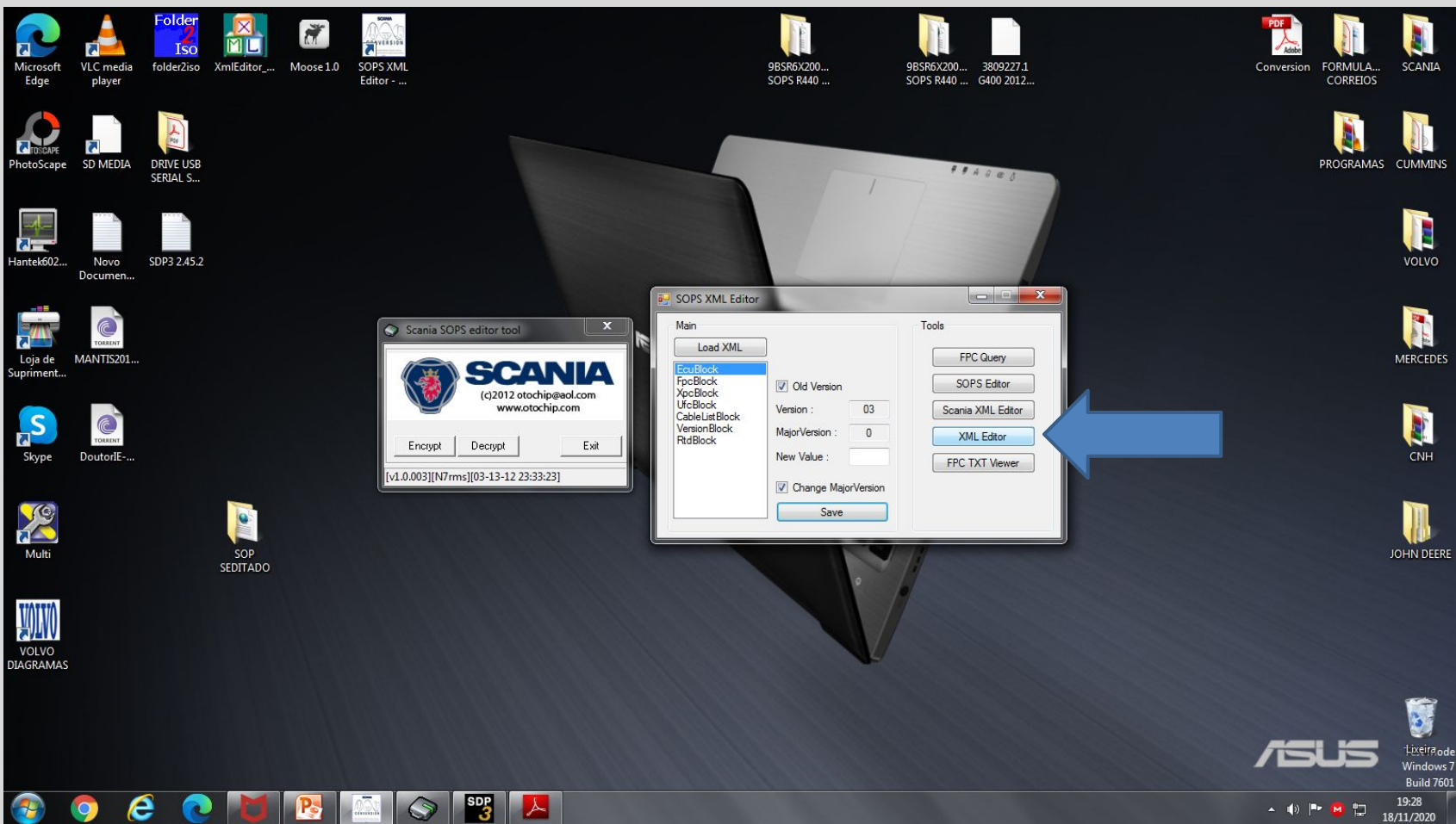


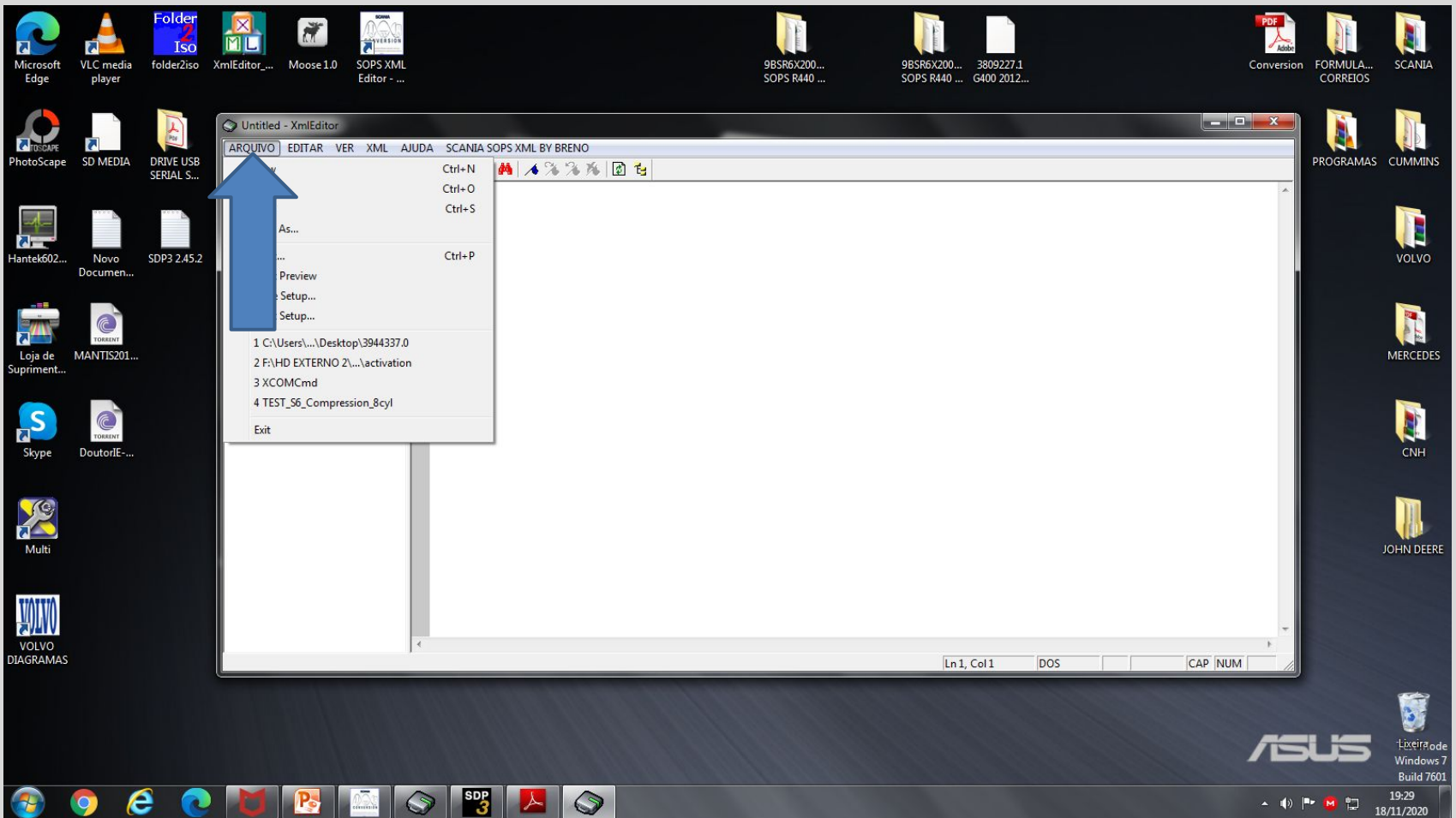


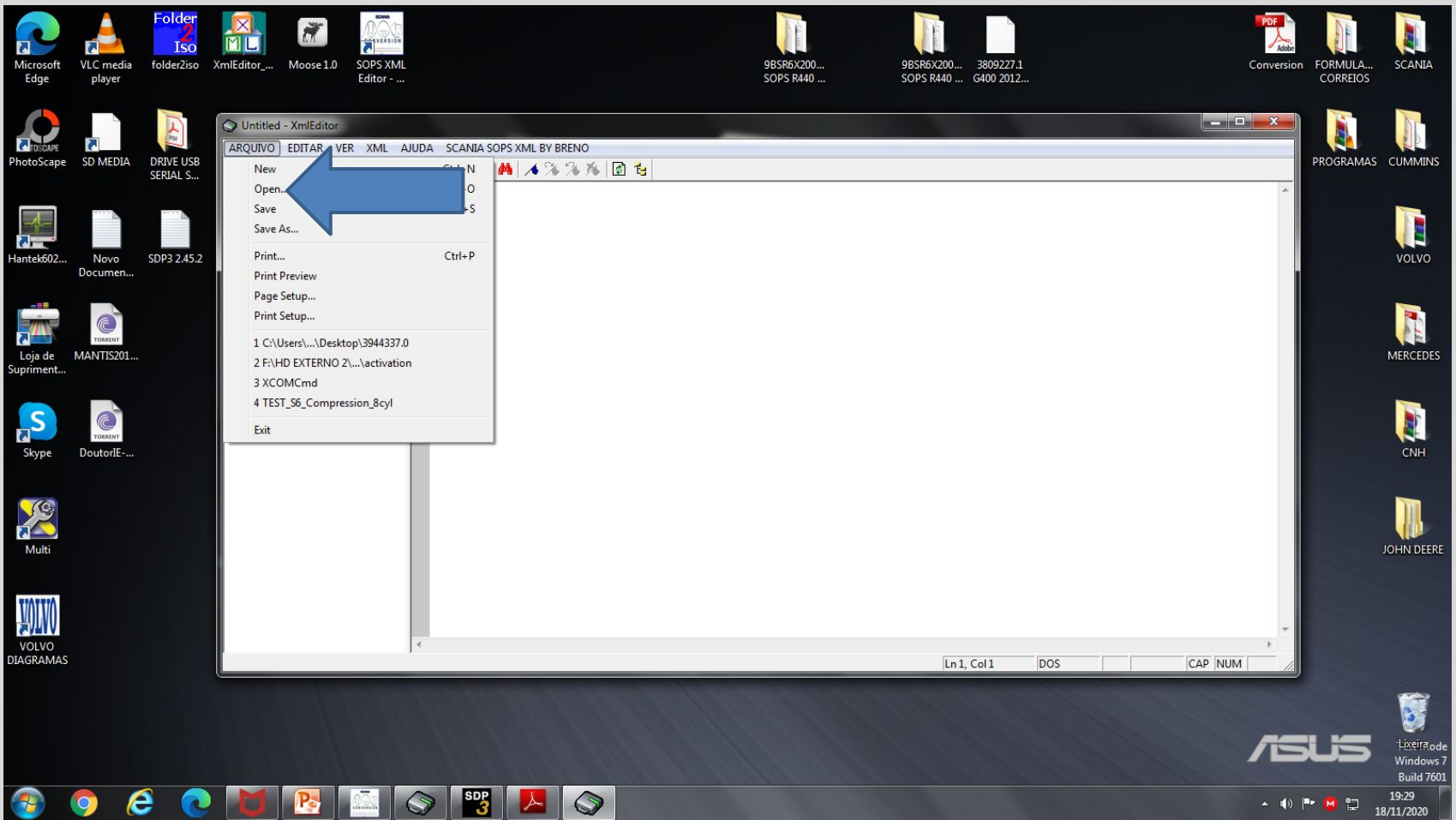


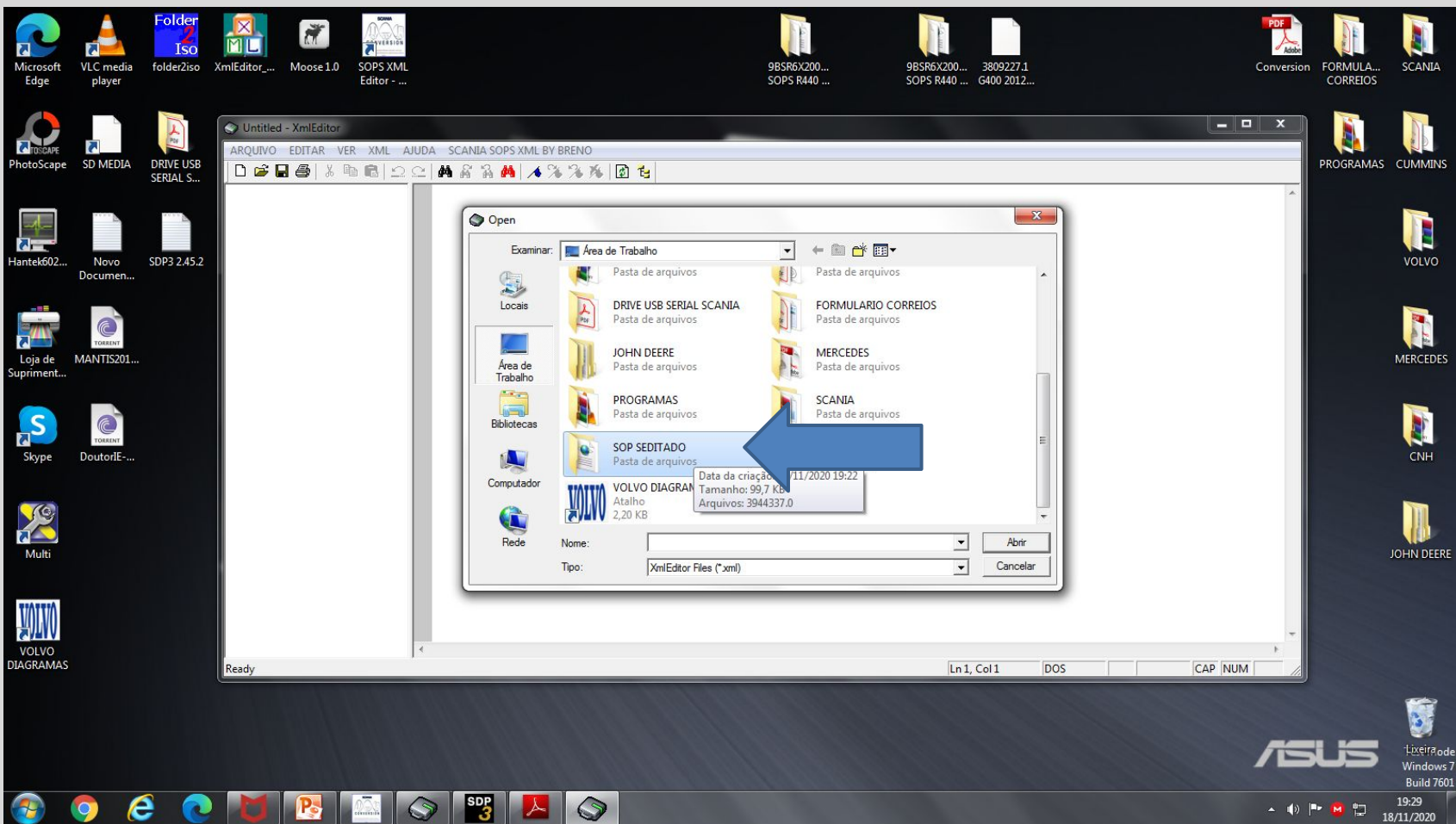


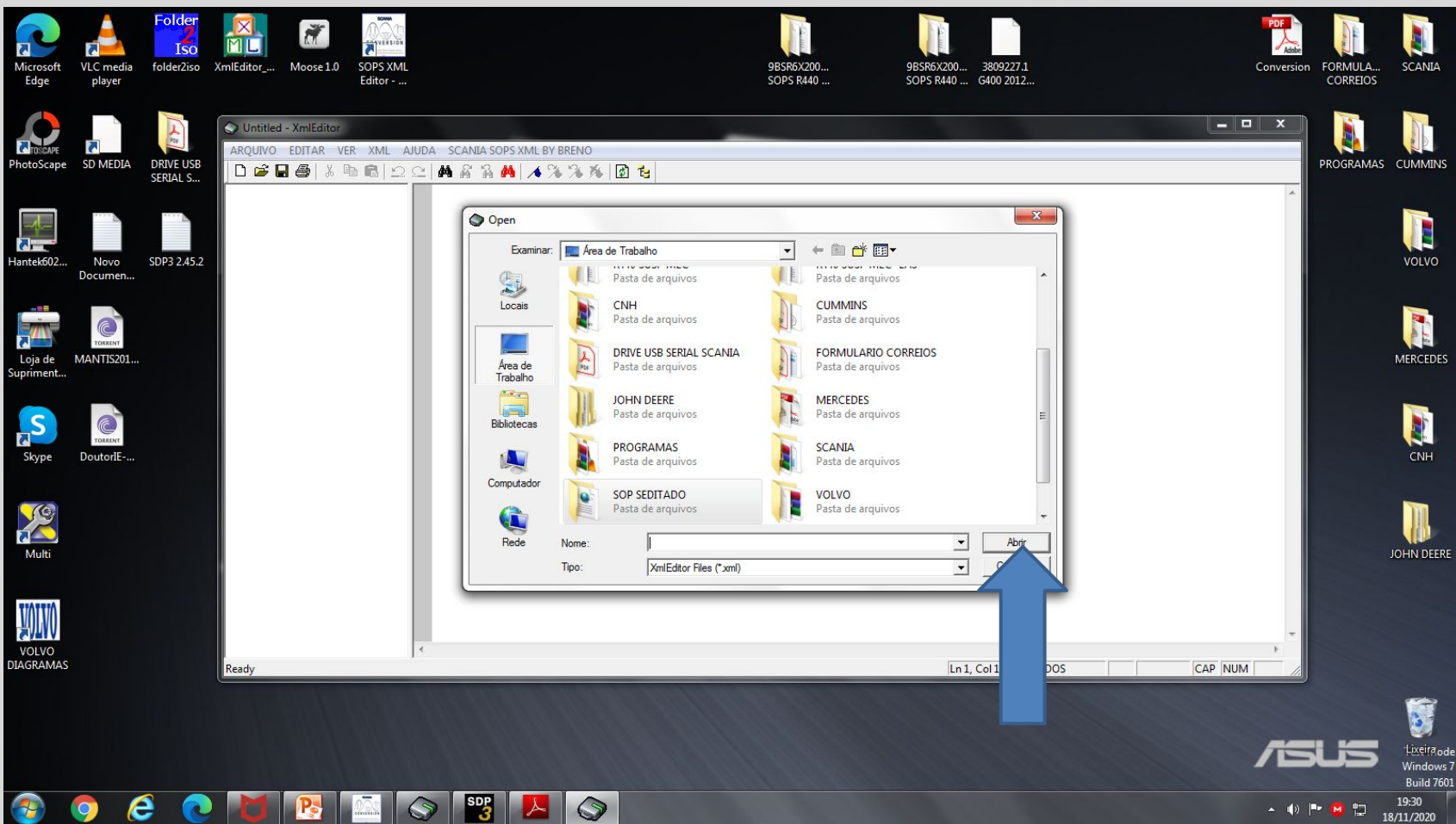


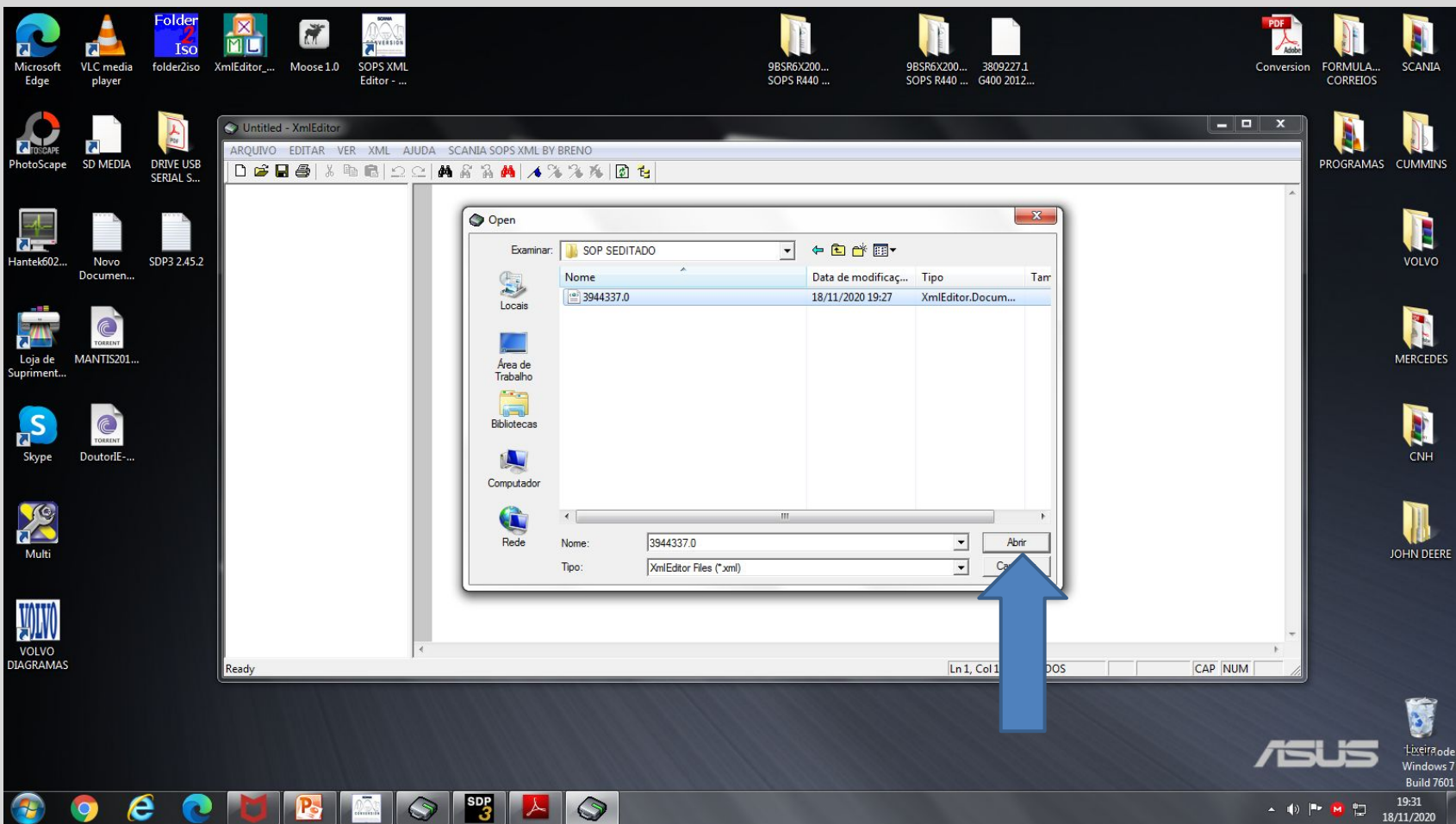


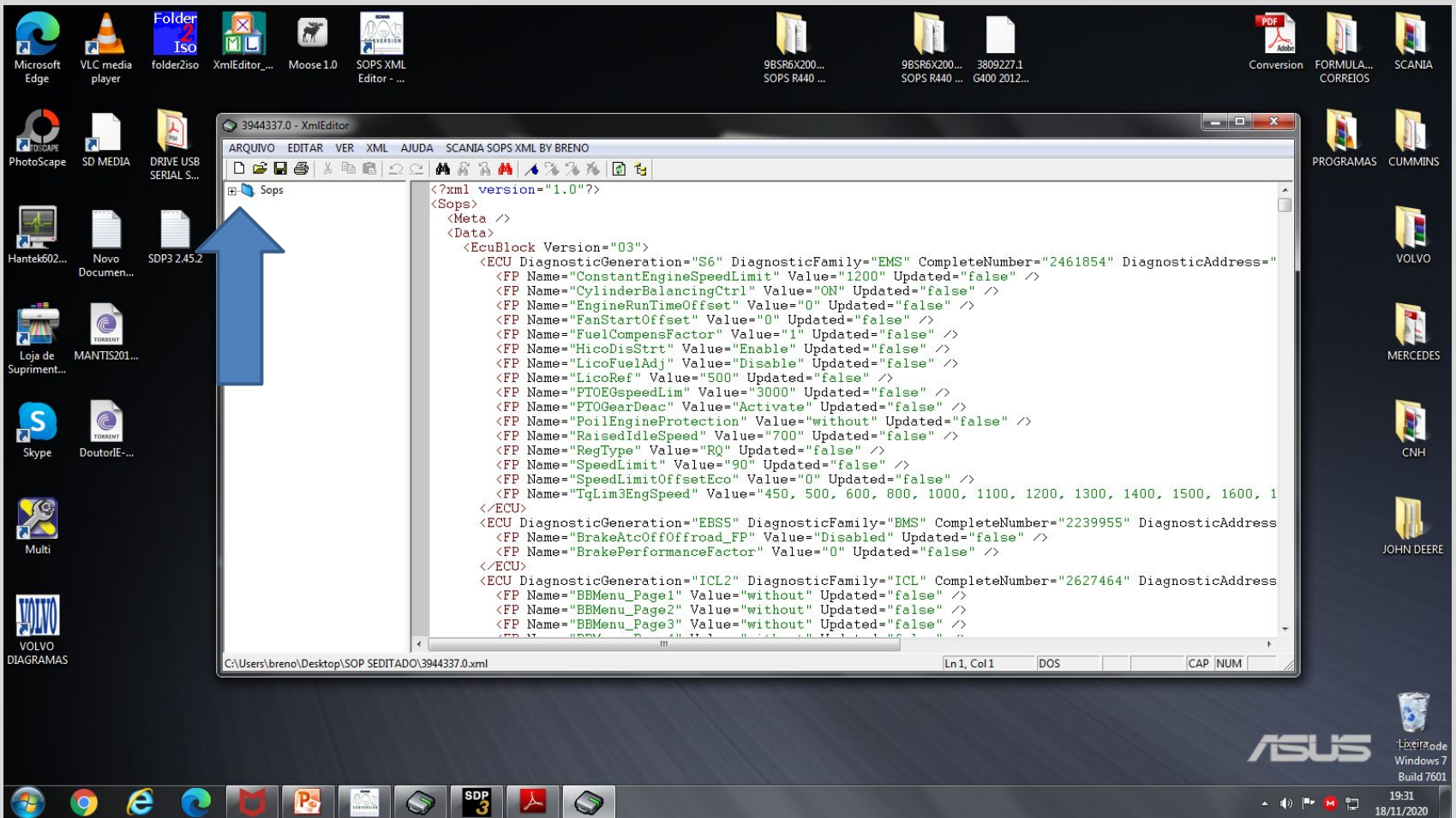


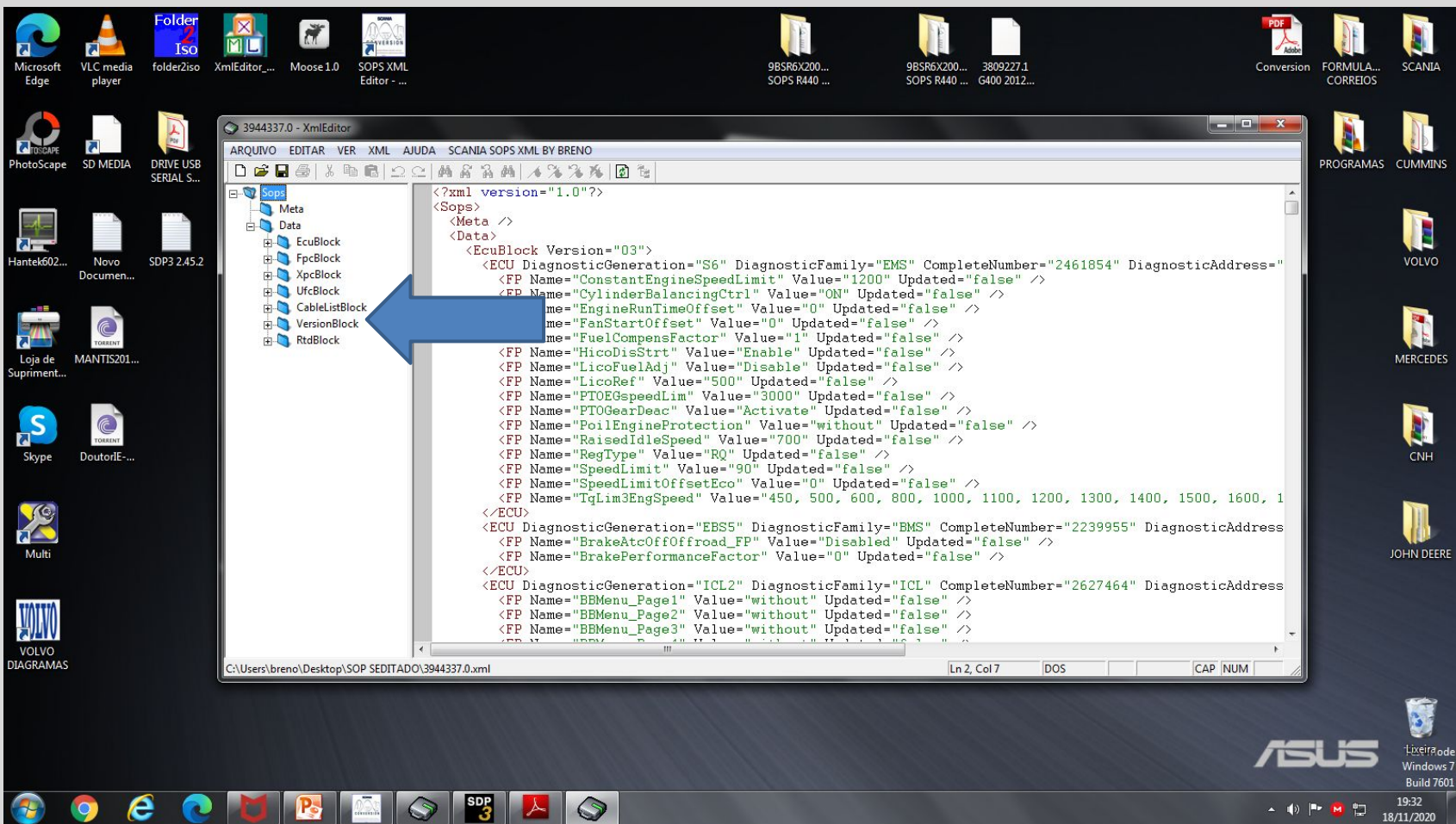












3944337.0 - XmlEditor

ARQUIVO EDITAR VER XML AJUDA SCANIA SOPS XML BY BRENO

Sops
Meta
Data
EcuBlock
FpcBlock
XpcBlock
UfcBlock
CableListBlock
VersionBlock
Version
RtdBlock

```
<CableList Name="2328331" >>  
<CableList Name="2329167" >>  
<CableList Name="2331594" >>  
<CableList Name="2395300" >>  
<CableList Name="2397271" >>  
<CableList Name="2402504" >>  
<CableList Name="2406226" >>  
<CableList Name="2470208" >>  
<CableList Name="2470212" >>  
<CableList Name="2470214" >>  
<CableList Name="2470217" >>  
<CableList Name="2471683" >>  
<CableList Name="2479824" >>  
<CableList Name="2484931" >>  
<CableList Name="2491894" >>  
<CableList Name="2553916" >>  
<CableList Name="2554226" >>  
<CableList Name="2554407" >>  
<CableList Name="2596532" >>  
<CableList Name="2617076" >>  
<CableList Name="2642887" >>  
<CableList Name="2642888" >>  
<CableList Name="2643815" >>  
<CableList Name="2665239" >>  
</CableListBlock>  
<VersionBlock Version="1">  
<Version MajorVersion="1" IdType="0" RebuildId="0" AffectedEcus="" LicenseSe  
</VersionBlock>  
<RtdBlock Version="03" >>  
</Data>  
</Sops>
```

C:\Users\breno\Desktop\SOP_SEDITADO\3944337.0.xml Ln 2469, Col 32 DOS CAP NUM

ASUS
Linha 7000
Windows 7
Build 7601

19:32
18/11/2020

