



біла
речовина

сіра
речовина

спинномозковий канал

2

1

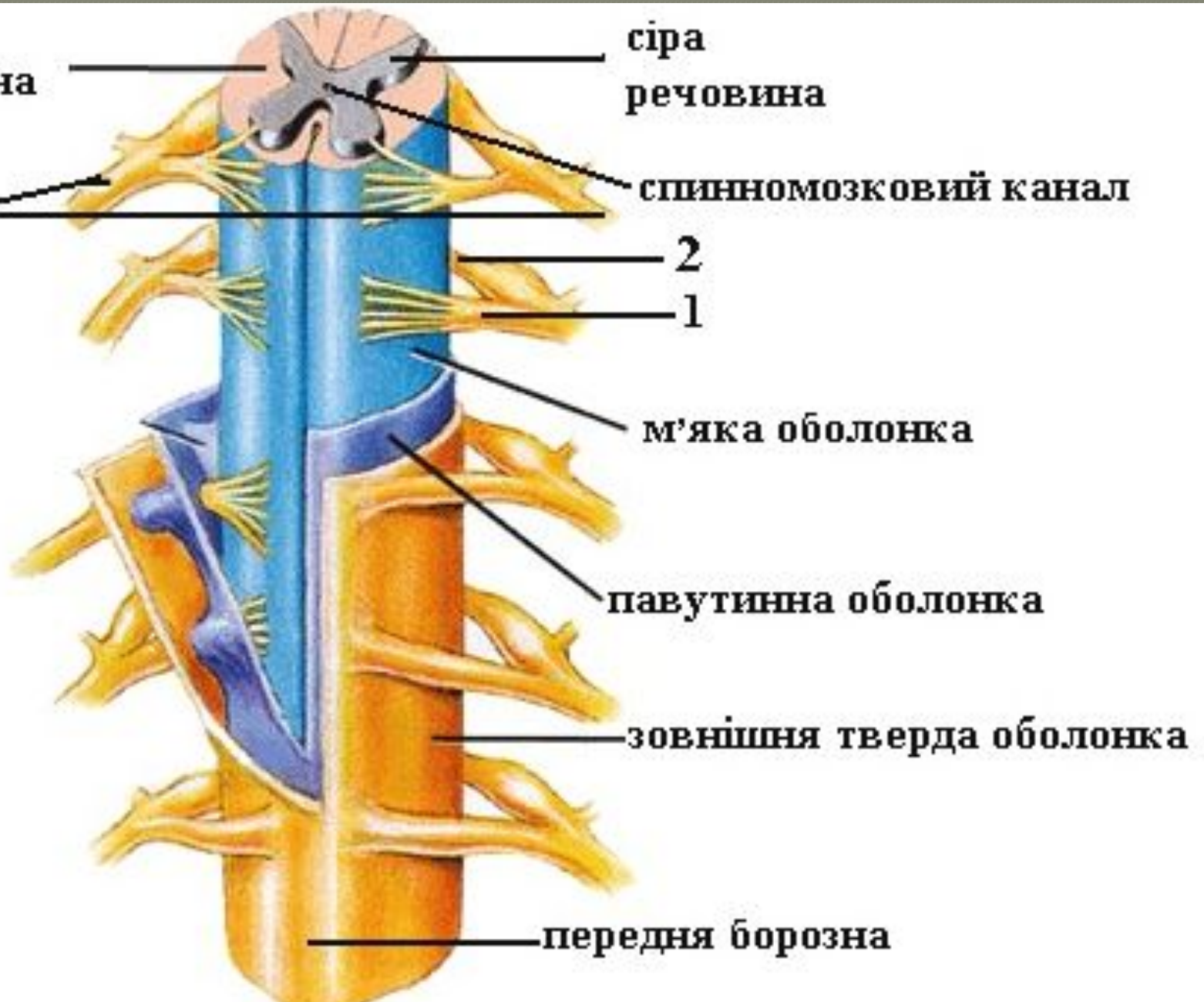
м'яка оболонка

павутинна оболонка

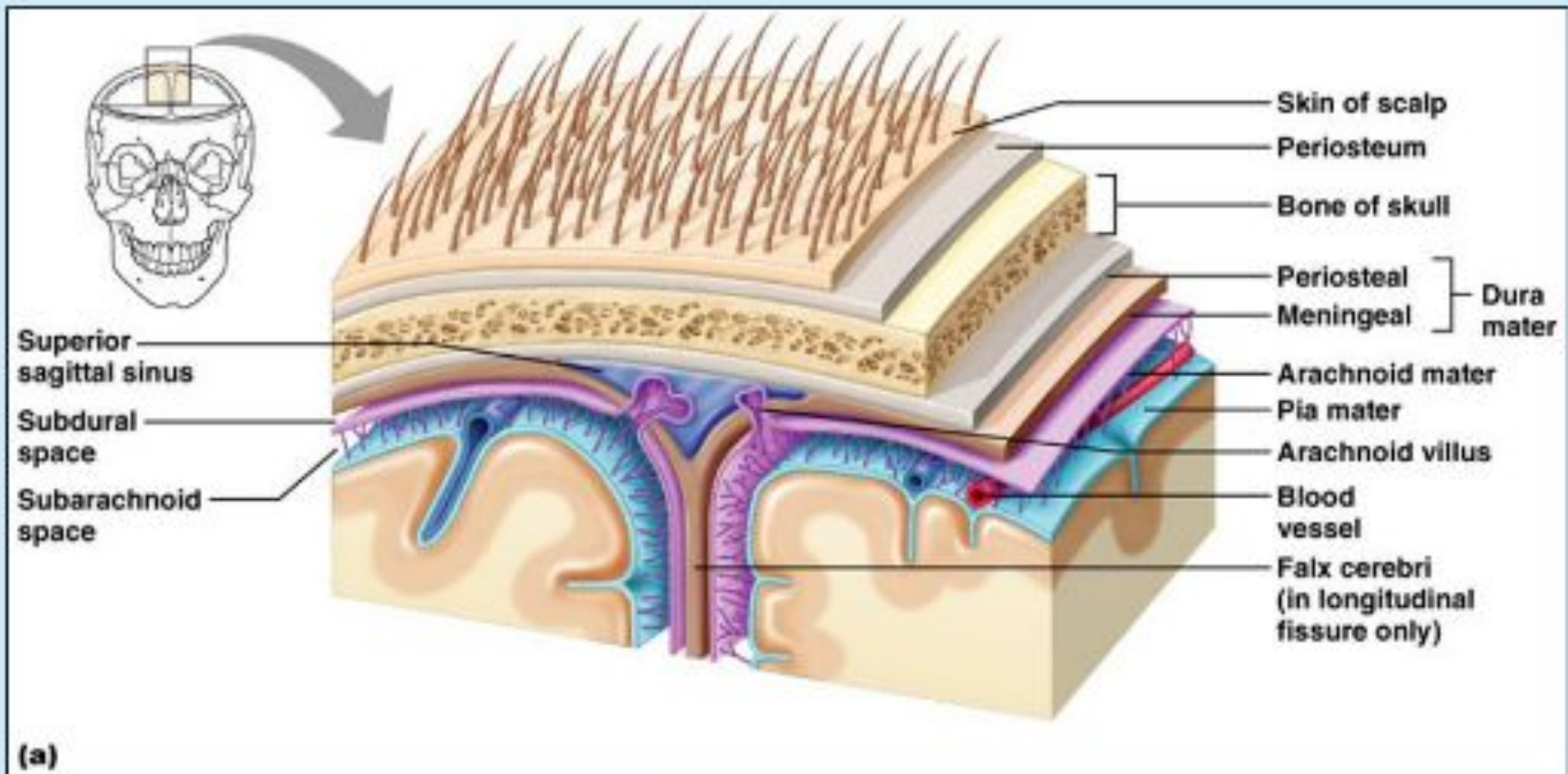
зовнішня тверда оболонка

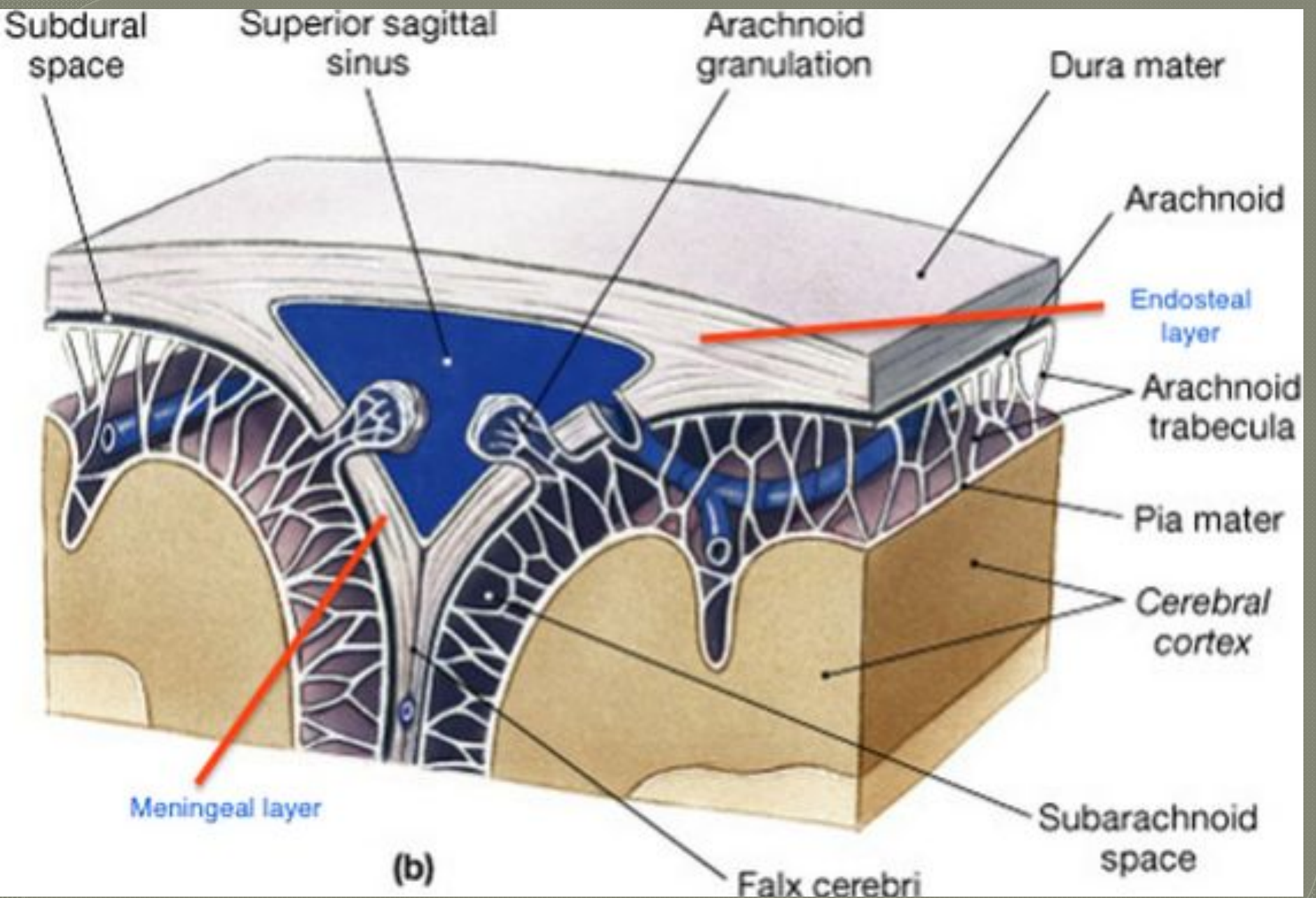
передня борозна

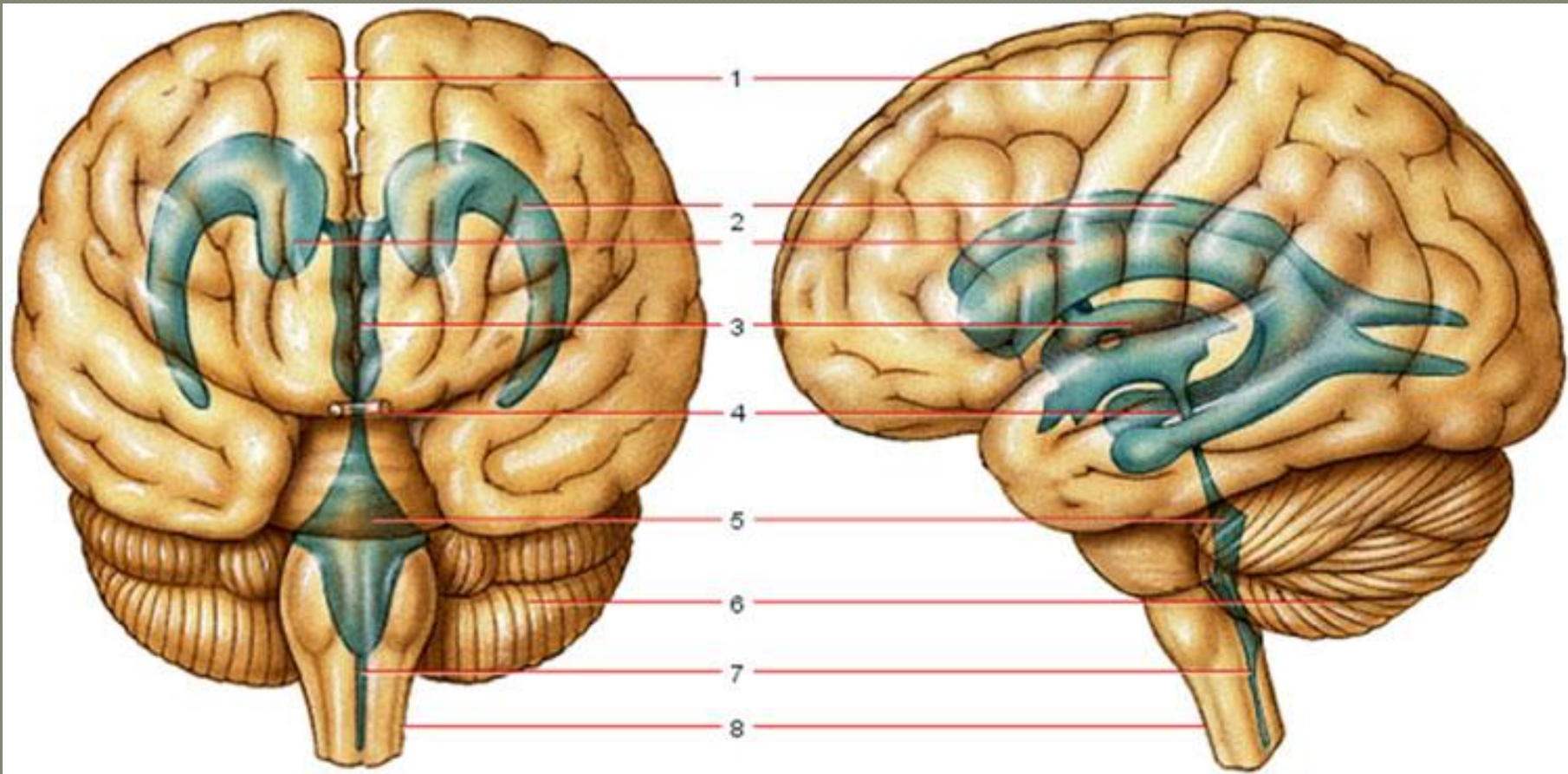
3

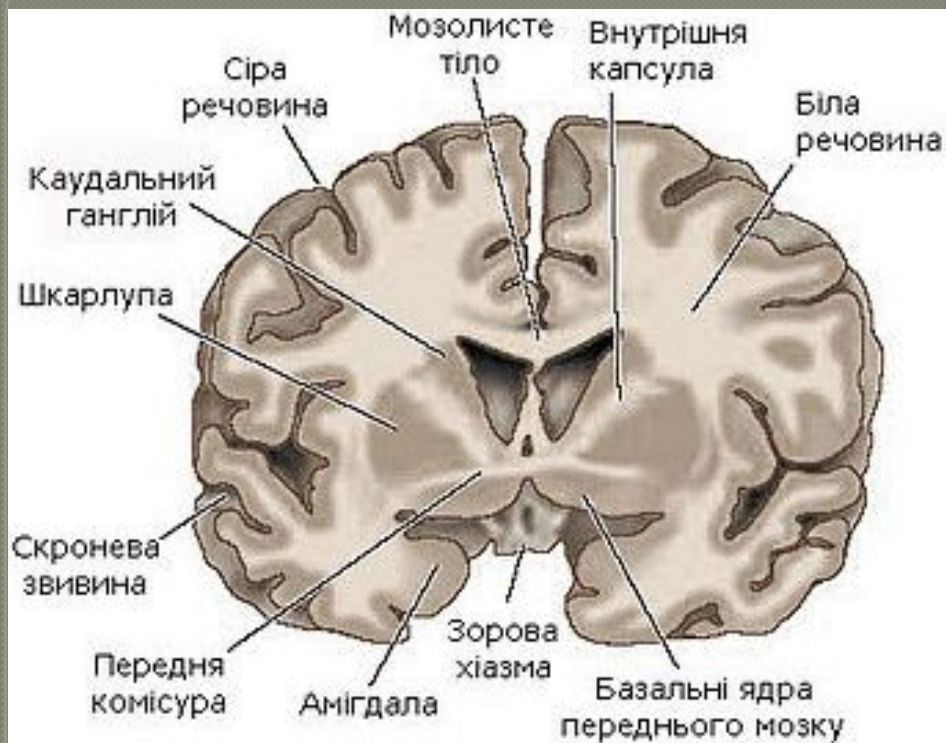


Meninges

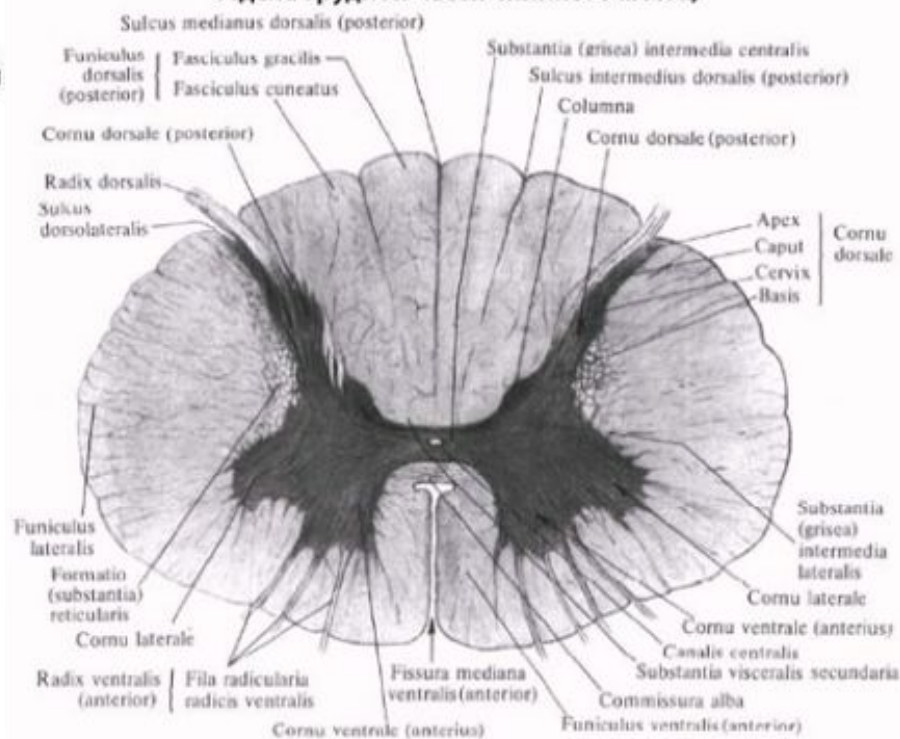


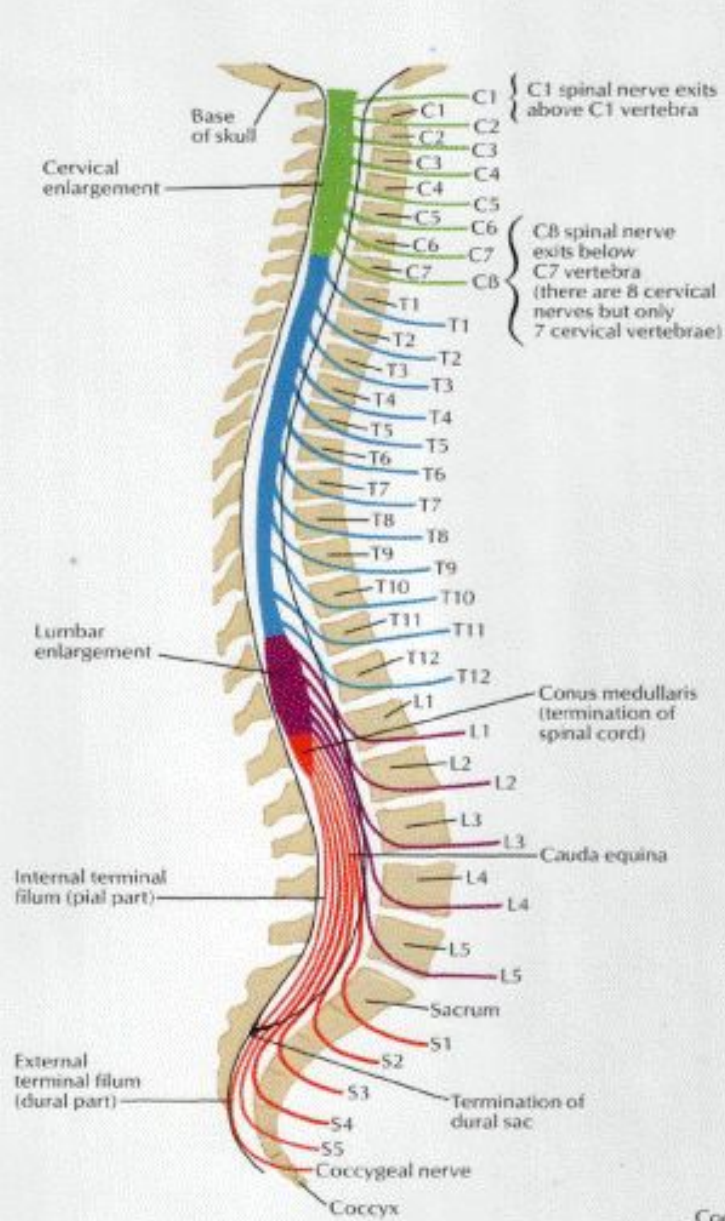




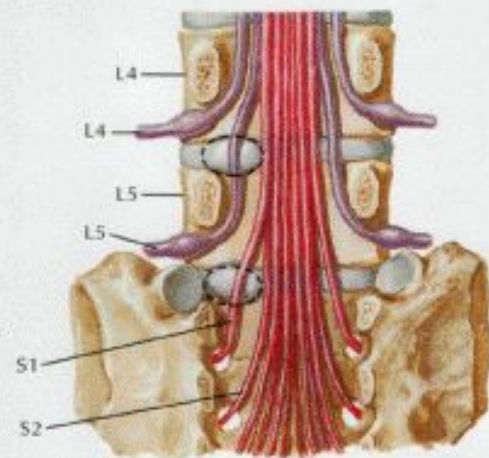


Спинальний мозок, medulla spinalis, (горизонтальний розрез верхнього отдела грудной части спинного мозга)

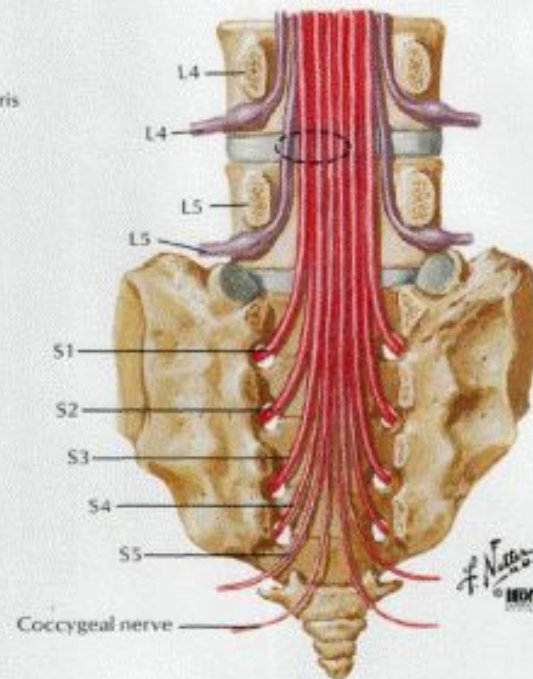




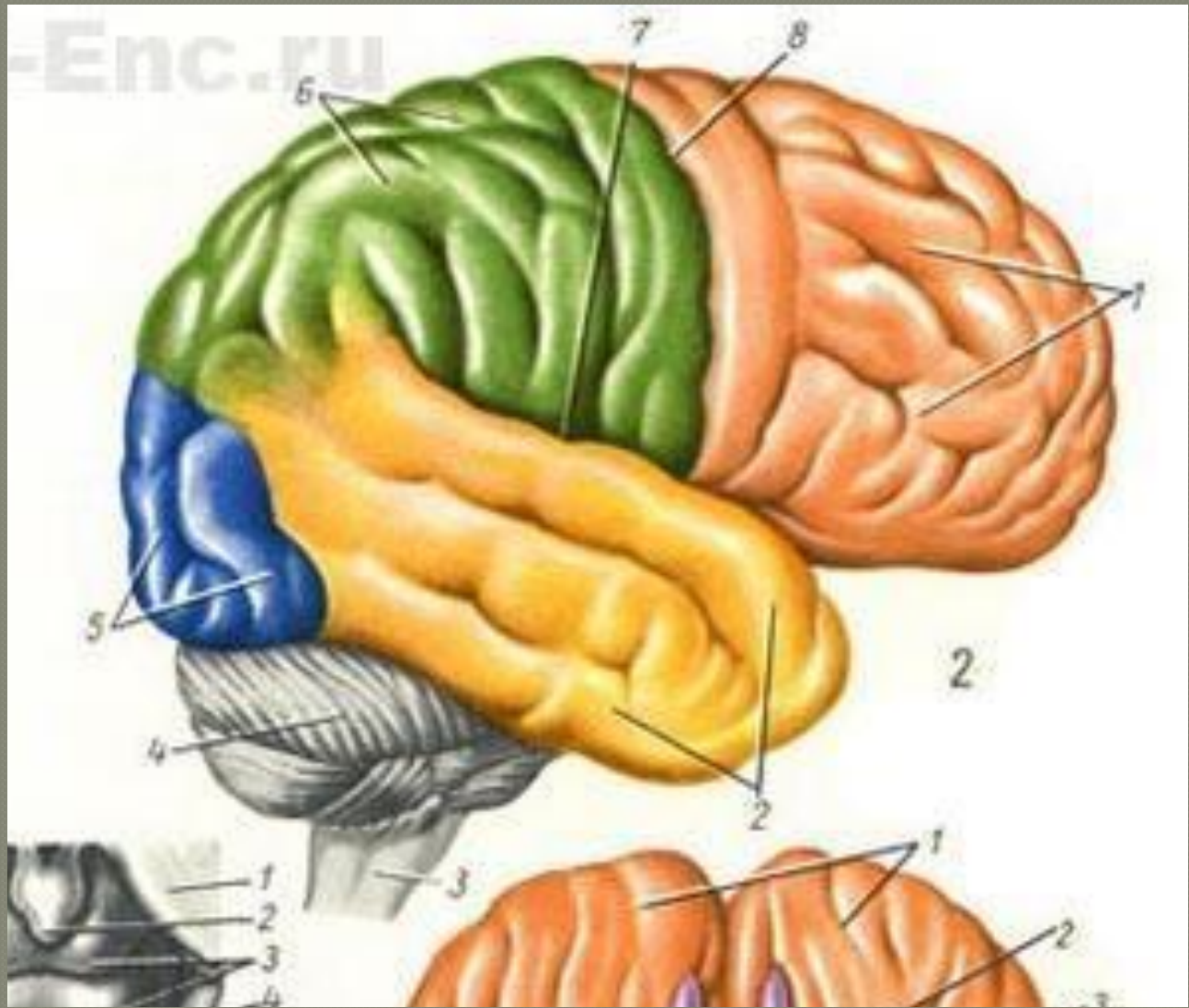
- Cervical nerves
- Thoracic nerves
- Lumbar nerves
- Sacral and coccygeal nerves



Lumbar disc protrusion does not usually affect nerve exiting above disc. Lateral protrusion at disc level L4-5 affects L5 spinal nerve, not L4 spinal nerve. Protrusion at disc level L5-S1 affects S1 spinal nerve, not L5 spinal nerve



Medial protrusion at disc level L4-5 rarely affects L4 spinal nerve but may affect L5 spinal nerve and sometimes S1-4 spinal nerves



Medic

