

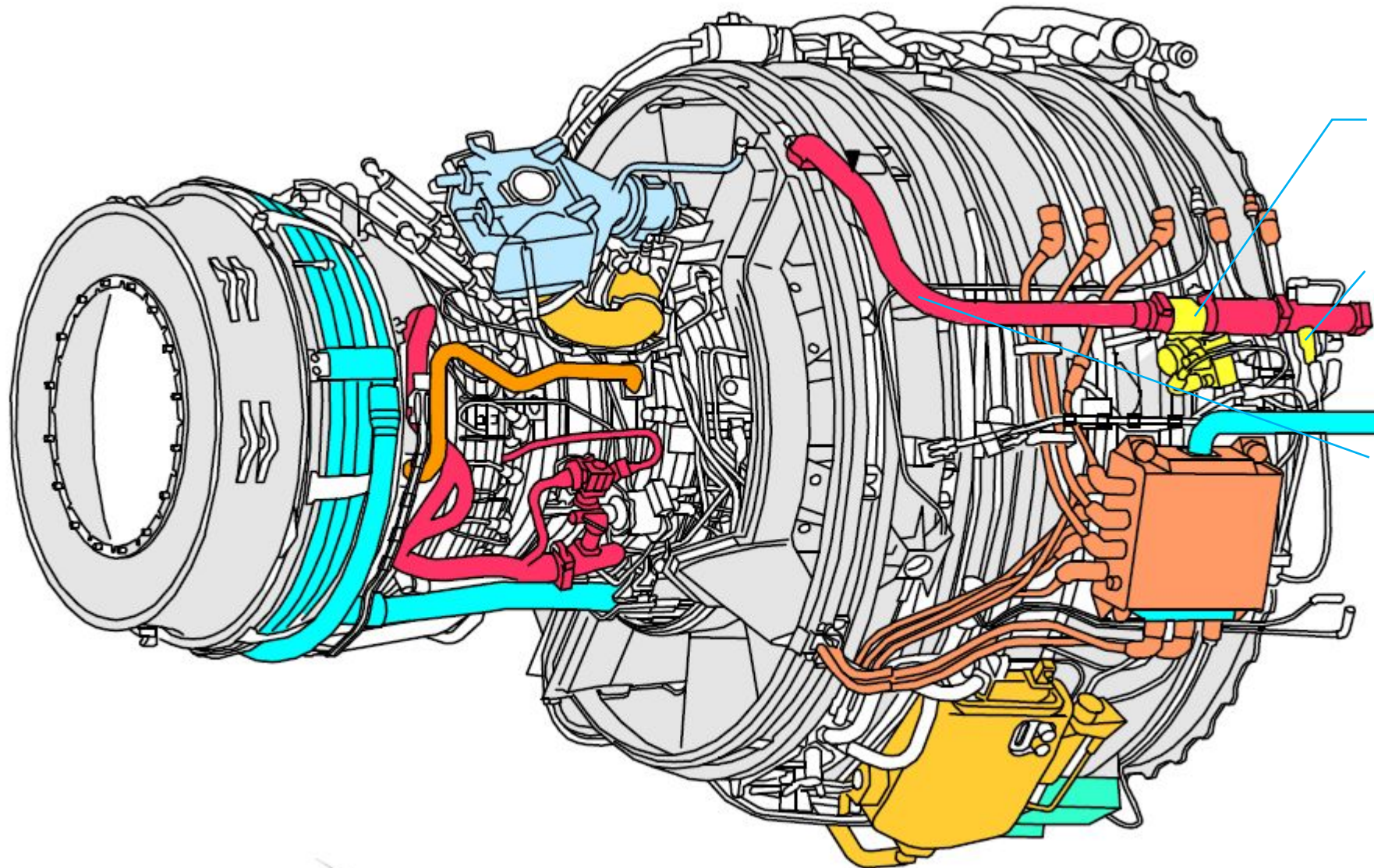
COWL
ANTICE
SYSTEM



* COMPONENT LOCATION

* SYSTEM DESCRIPTION





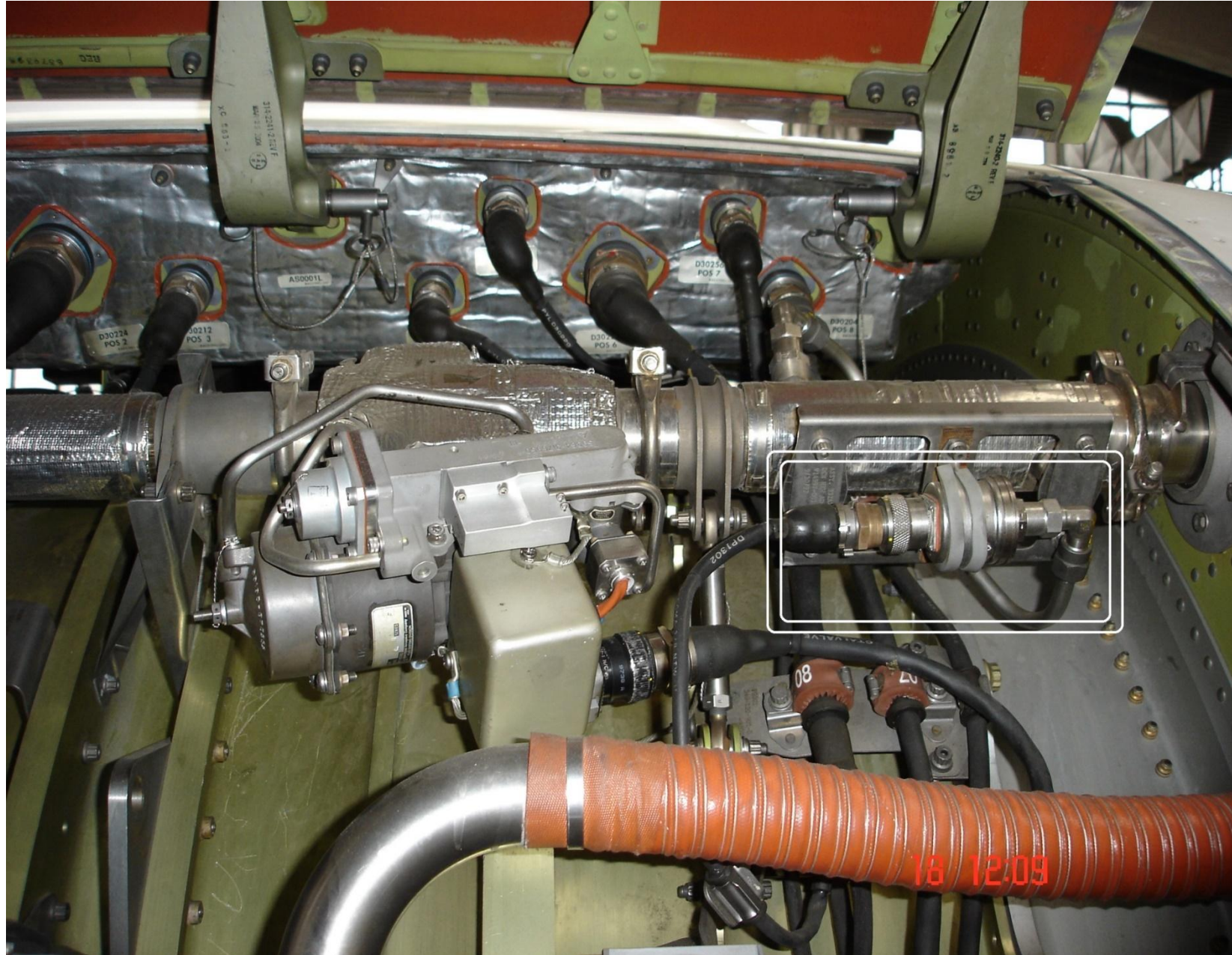
* INLET COWL THERMAL ANTI ICE VALVE

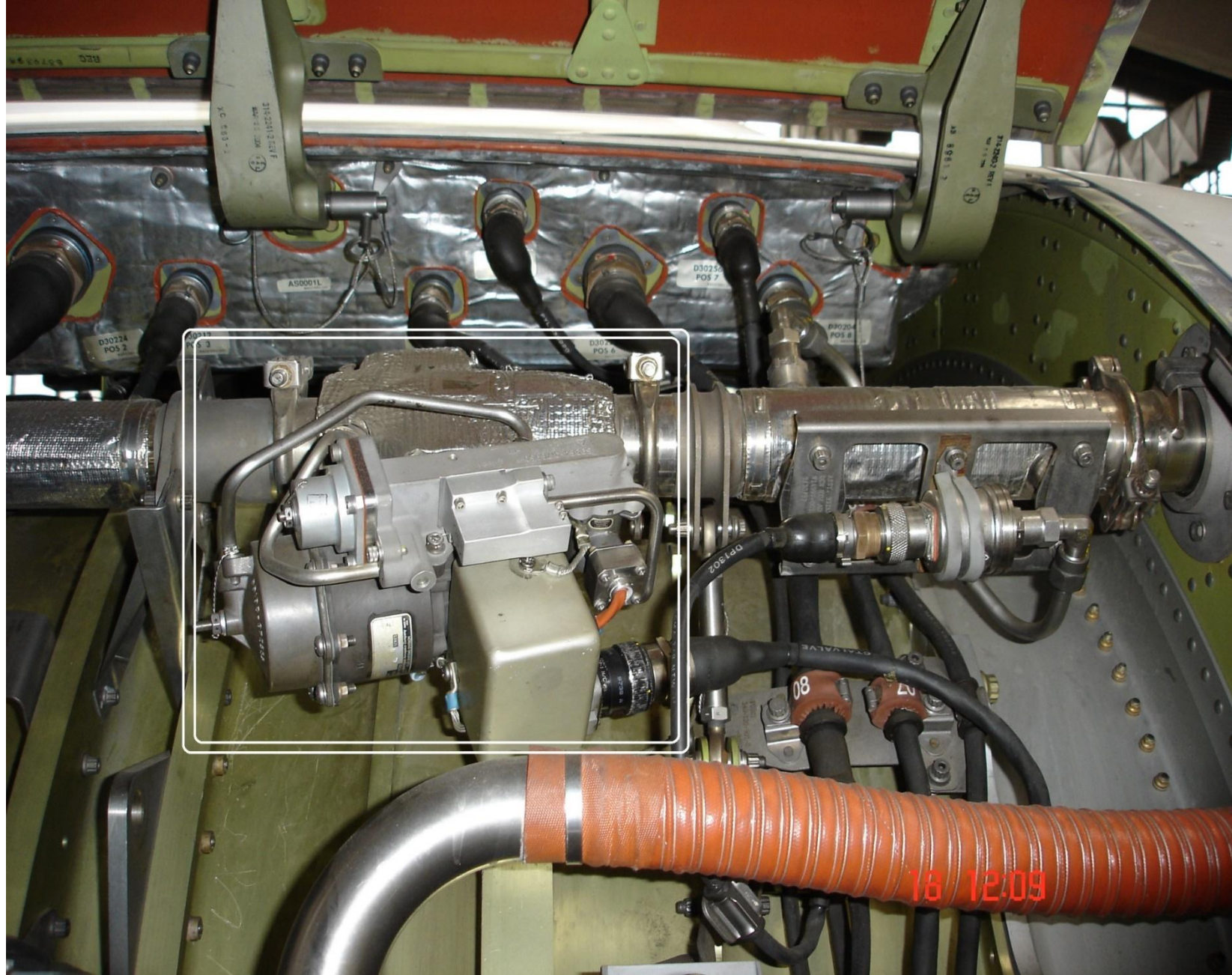


* OVER PRESSURE SWITCH



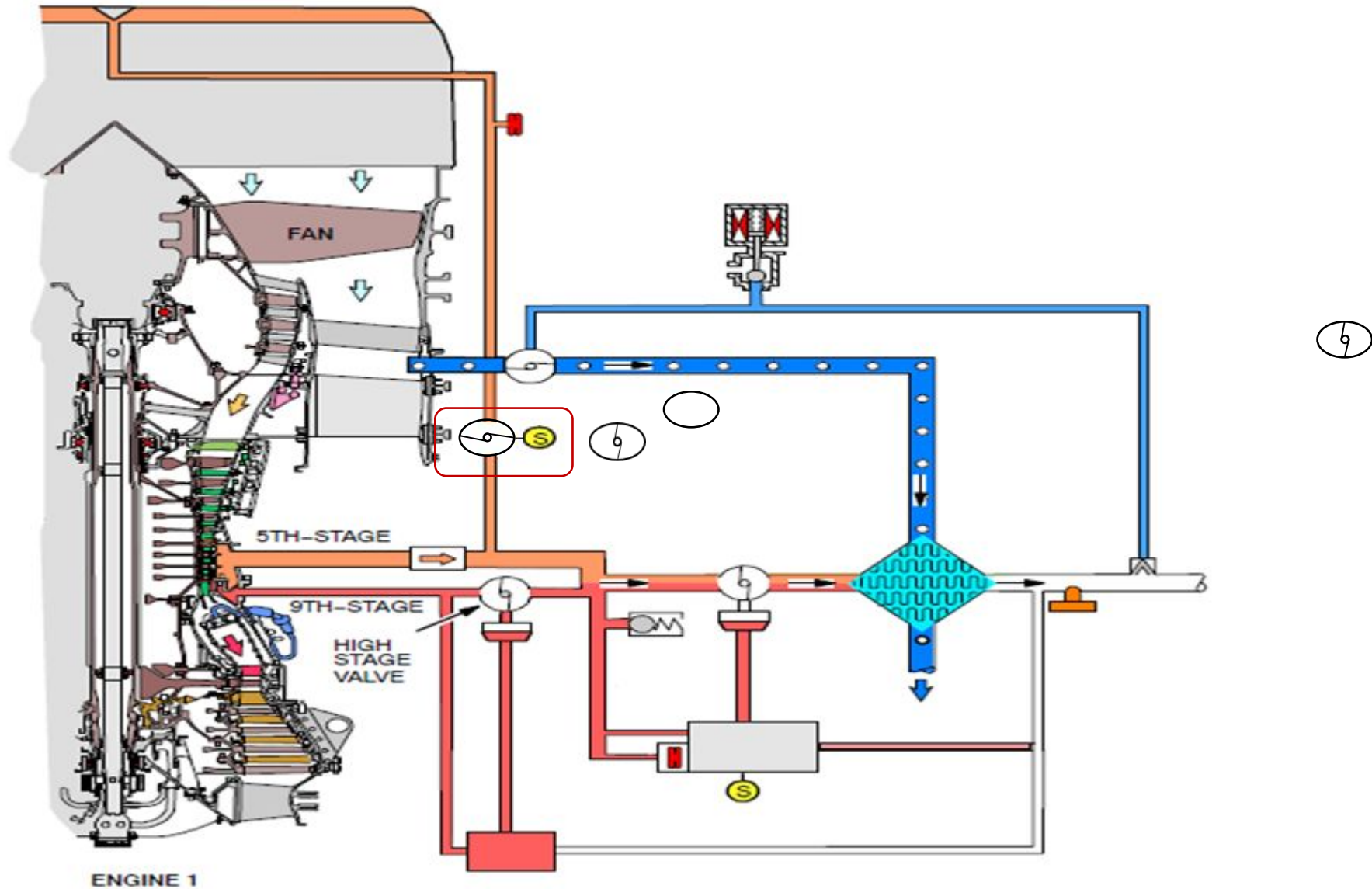
* COWL ANTI ICE DUCT





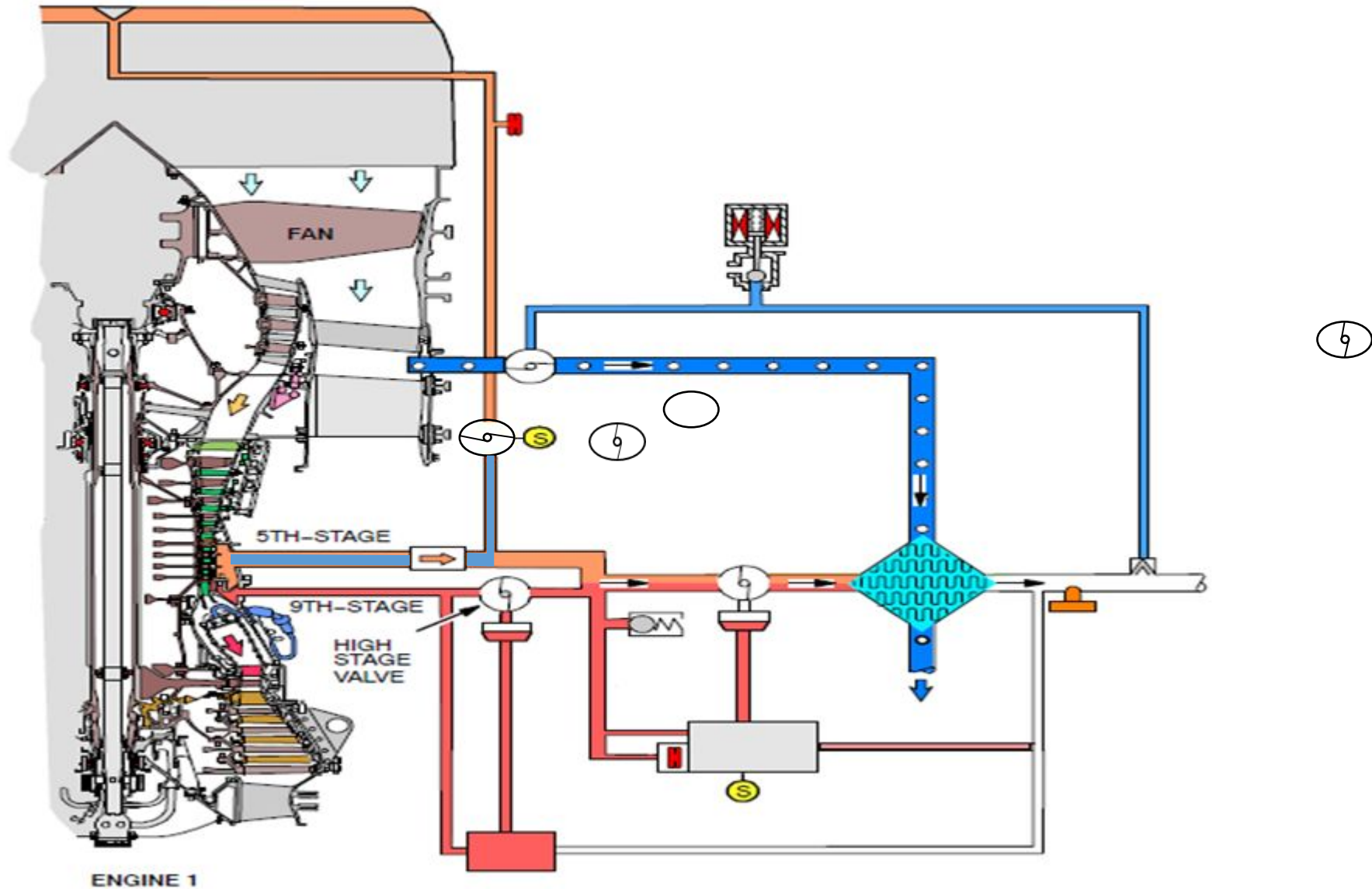
COWL ANTI ICE SYSTEM

The inlet cowl anti-ice valve is an electrically controlled and pneumatically operated butterfly valve. It is spring loaded to the closed position.



COWL ANTI ICE SYSTEM

When the engine is running, air comes and waits for selenoid activation to open the valve.



THANKS FOR WATCHING

BY H.AYDIN