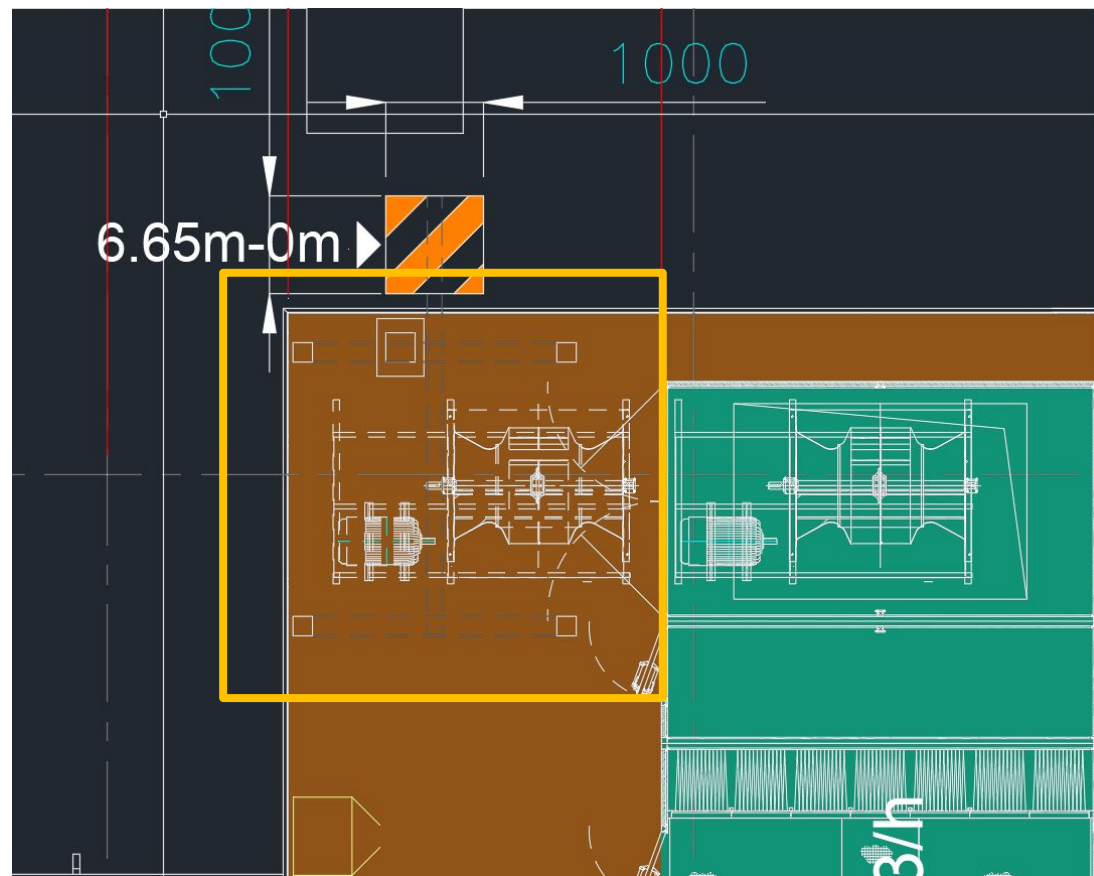
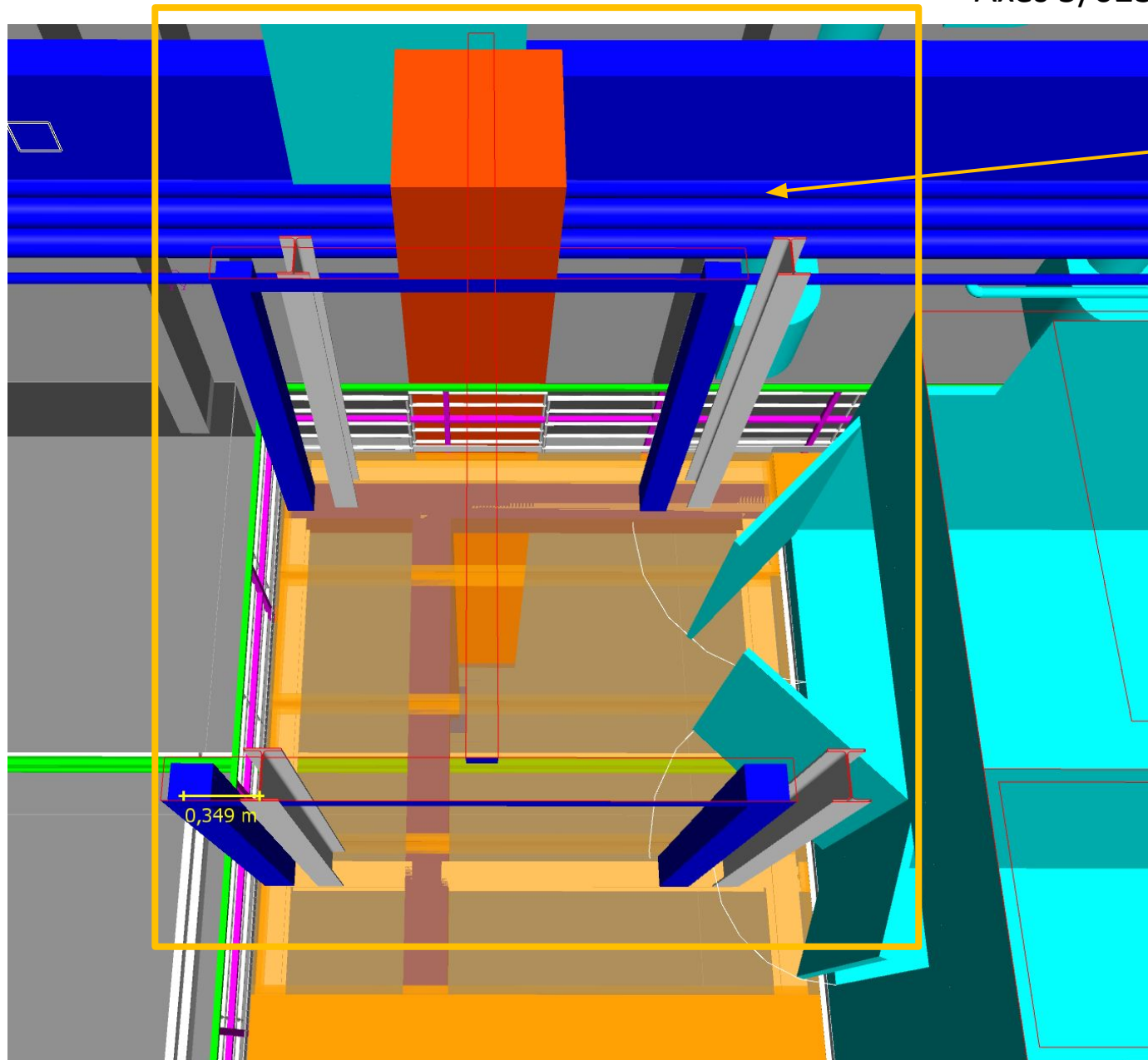


Axes 5/023

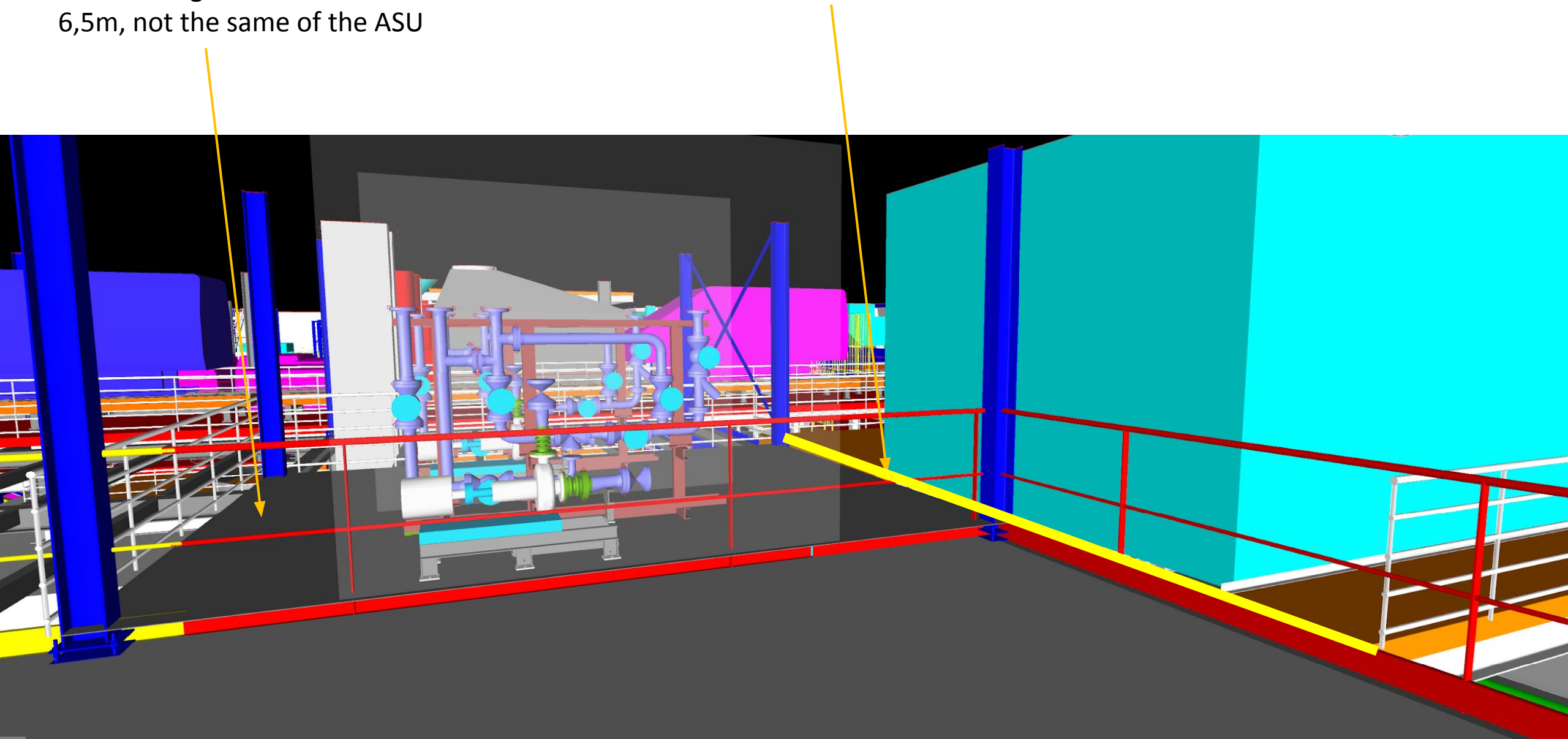
Move monorail columns 350mm left  
according to last gen. Layout (04/05)  
Otherwise ASU doors won't open  
correctly



Axes 8/023

This walking level should be at elev.  
6,5m, not the same of the ASU

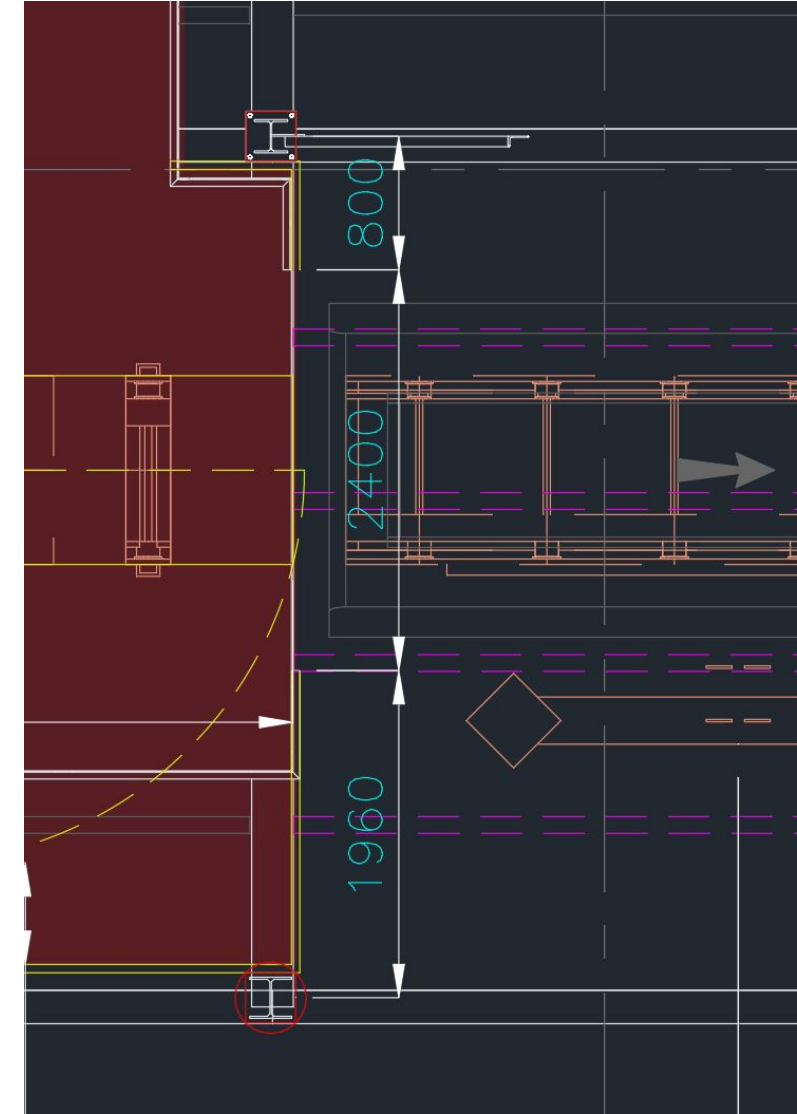
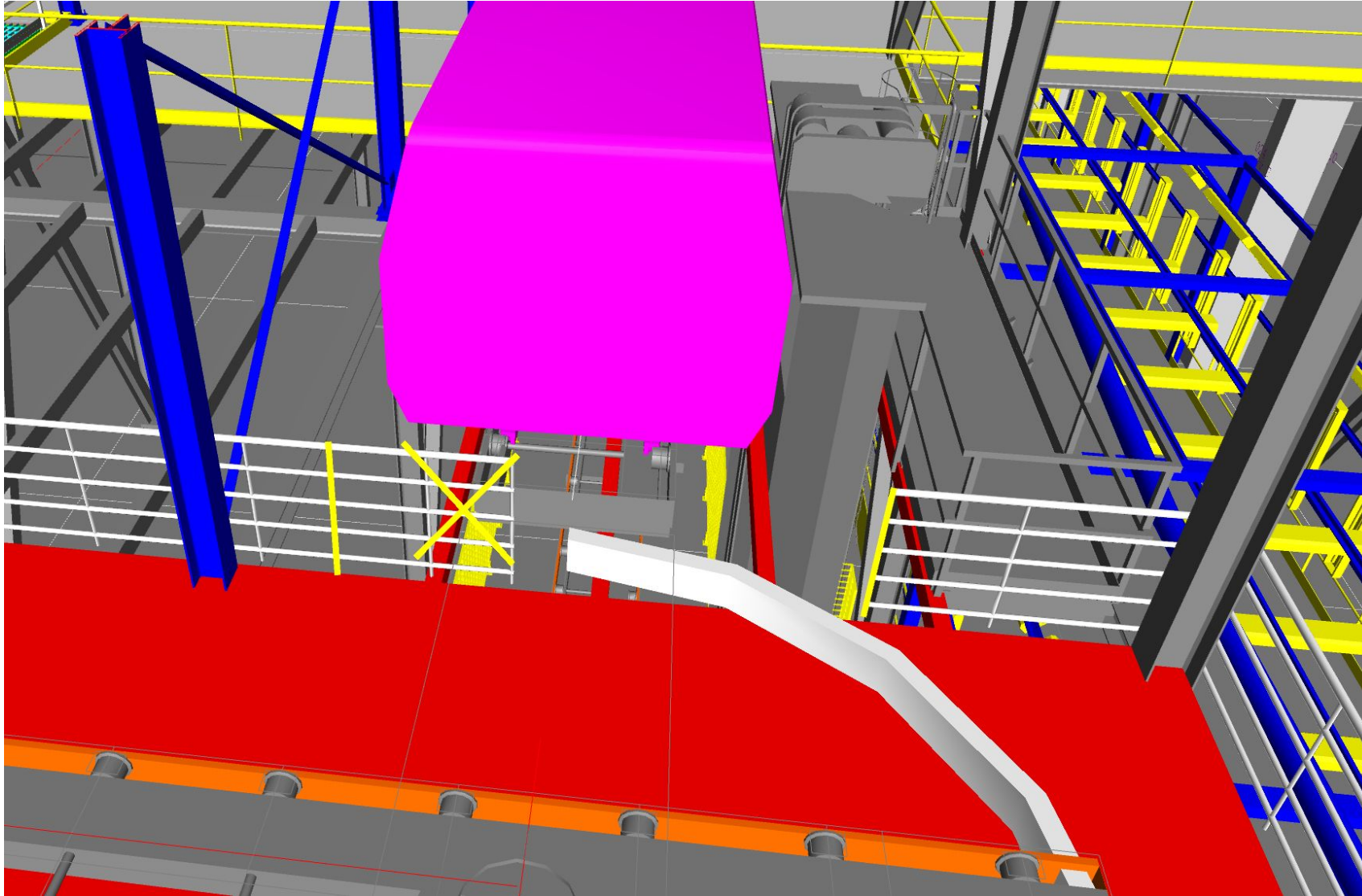
We will have a step along this line





Axes 10/022

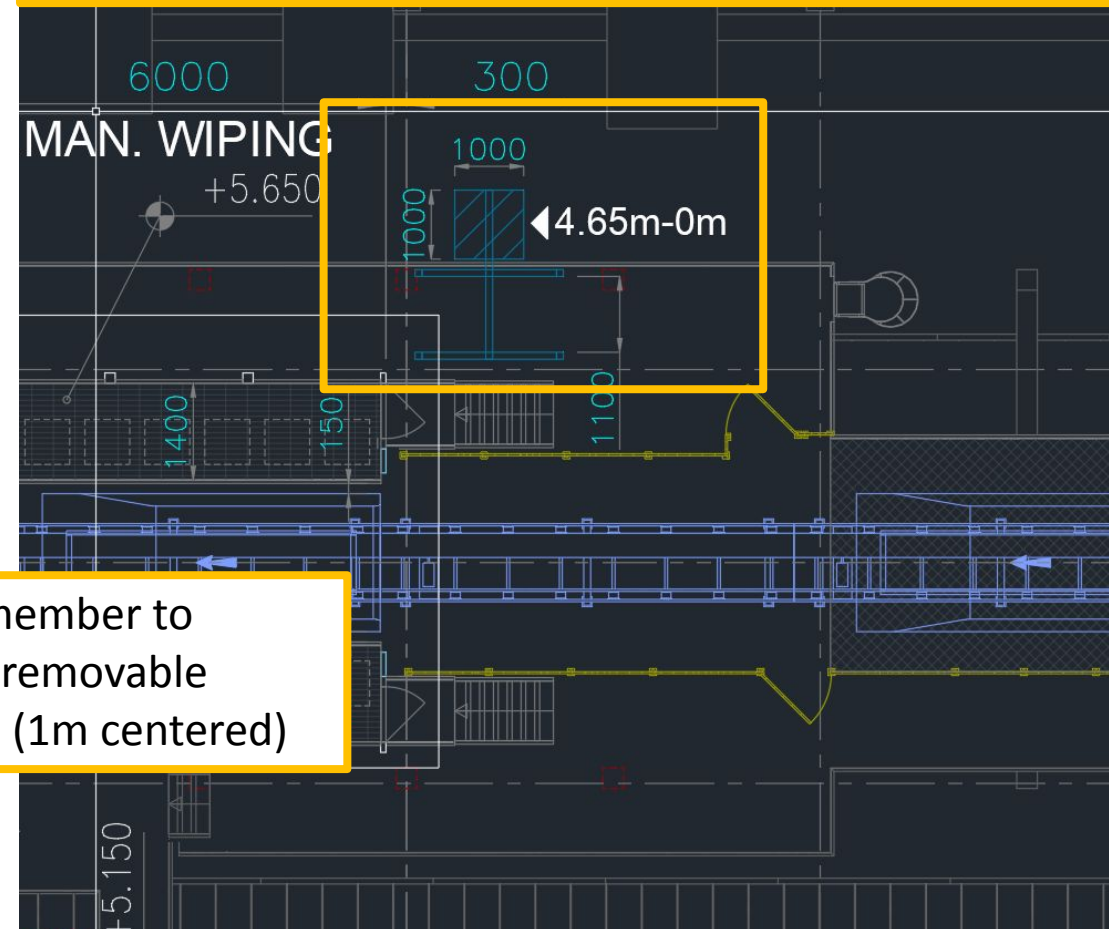
Platform B – (022/10-11): adjust handrail  
according to Layout dimensions (right picture)



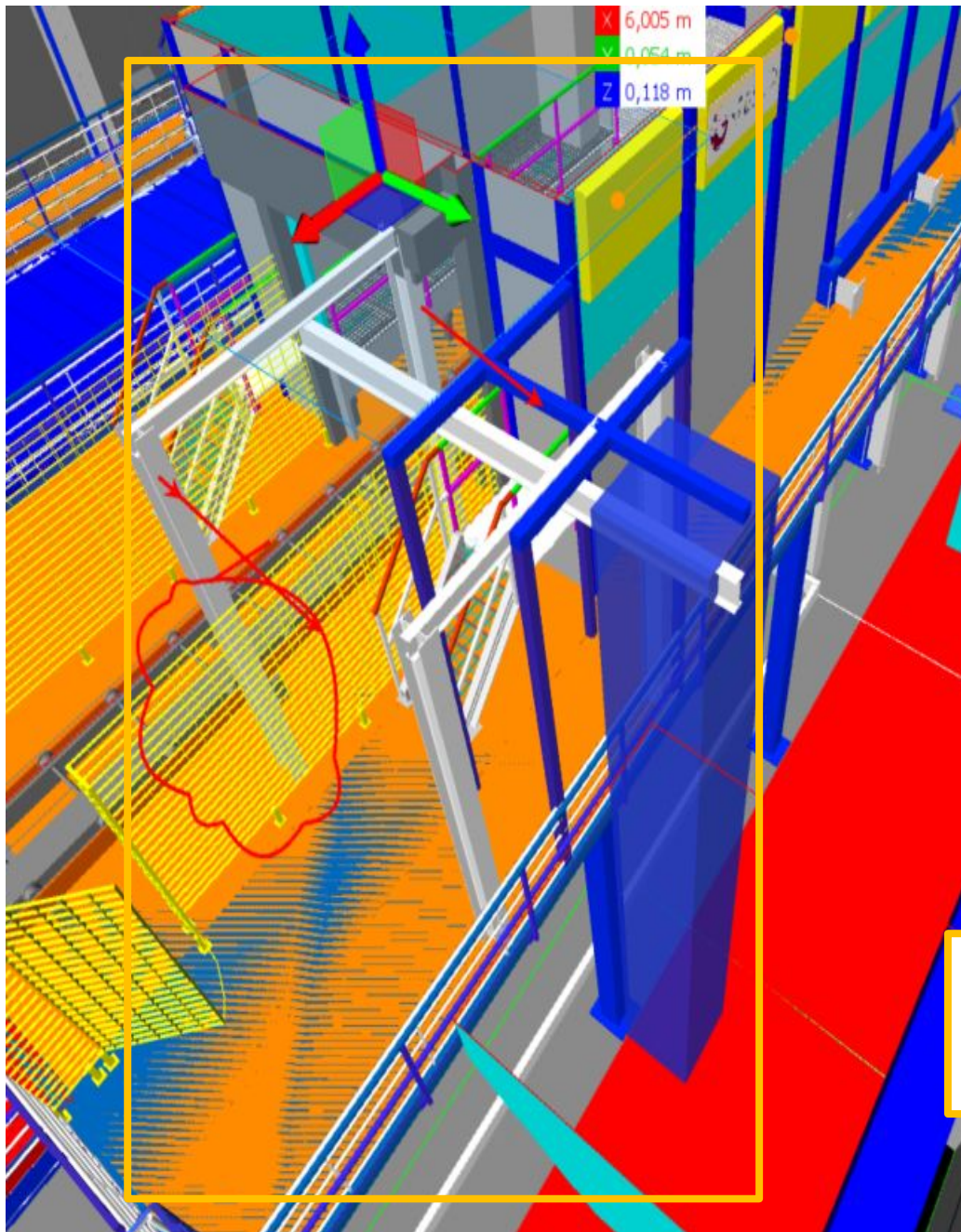
Axes 5/017

Move monorail from  
0,00 to 4,65 (platf.  
A1)

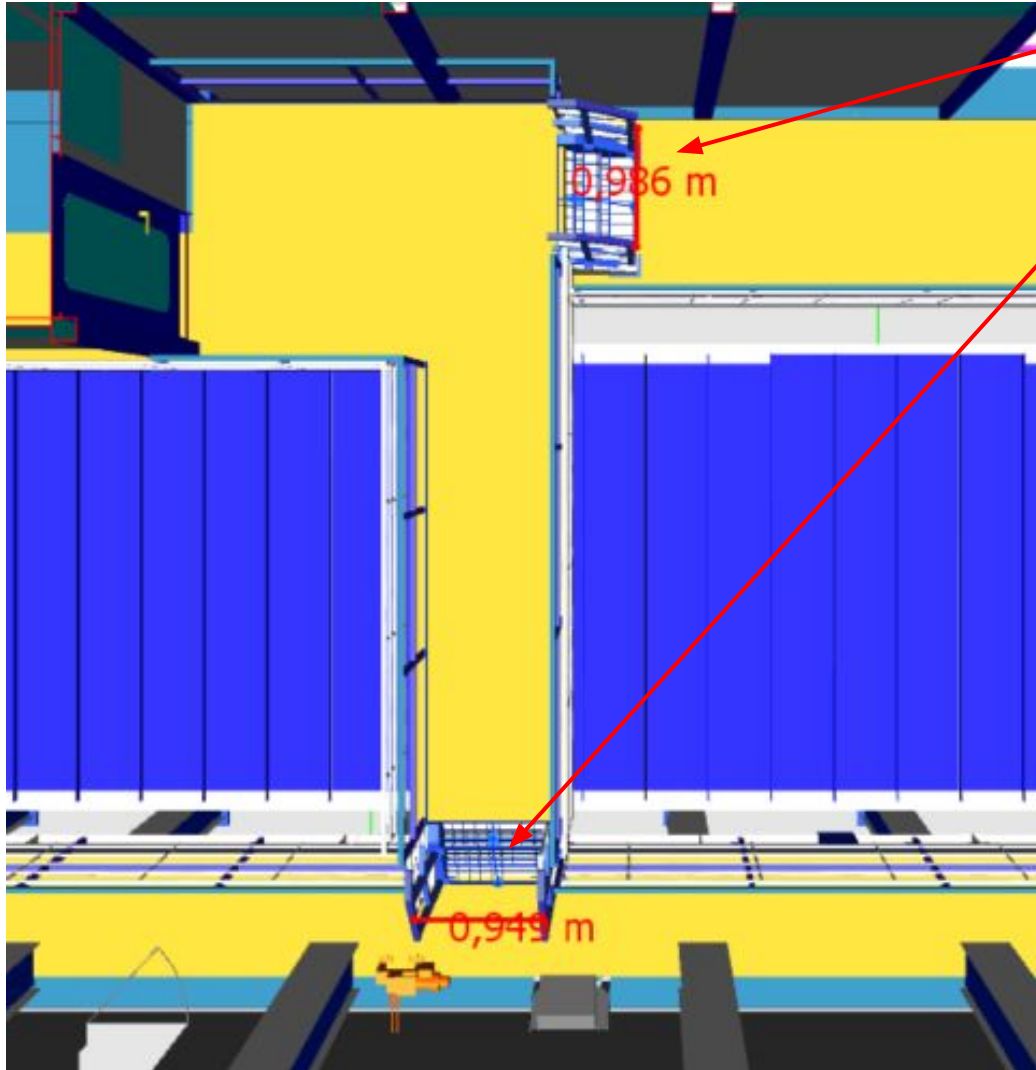
Looks like you used same monorail of ASU, this should  
be smaller, it downloads only the empty filters of the  
Drypan



Also remember to  
provide removable  
handrail (1m centered)



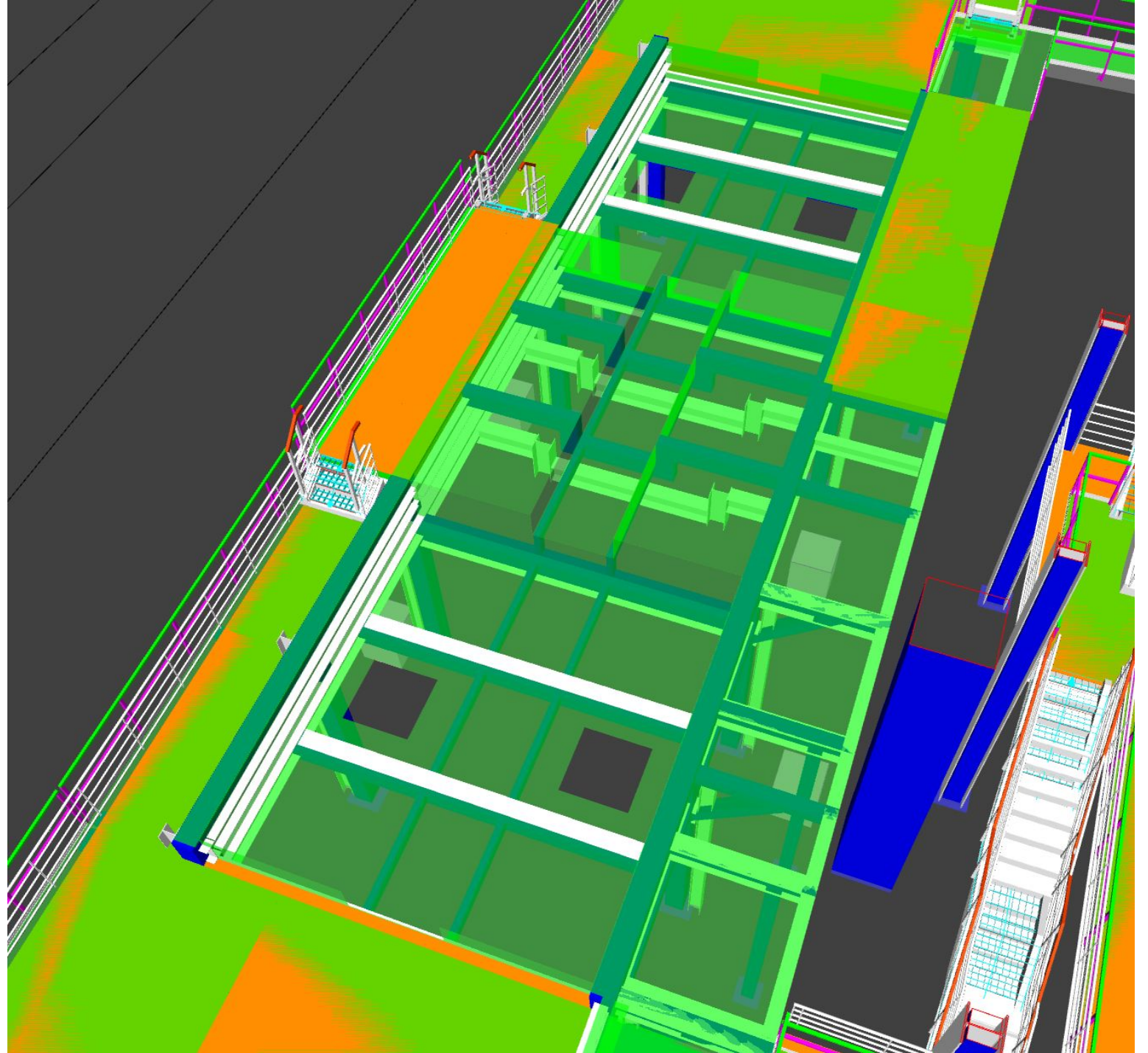




Stairs to be minimum 1 meter  
for safety evacuation  
(net dimension between  
handrails)

Axes 6/016  
Axes 7/016

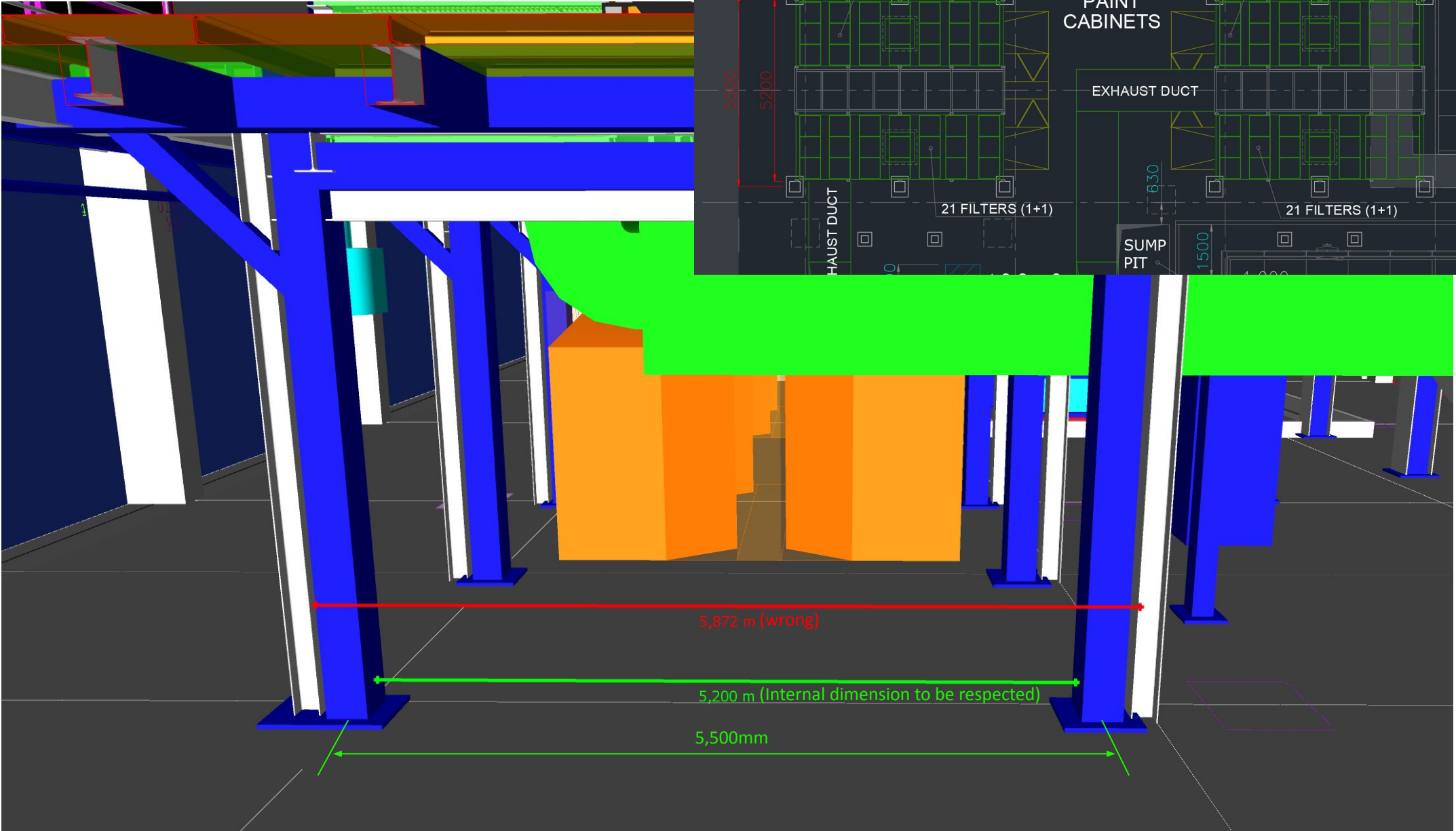
Platform A1 - Booth area  
Previous comments are  
still valid, see following  
slides



Platform A1 - Booth area

Important: the 12 columns of the Spray Booth have been modified after change of the Scrubber technology by Renault-VAZ

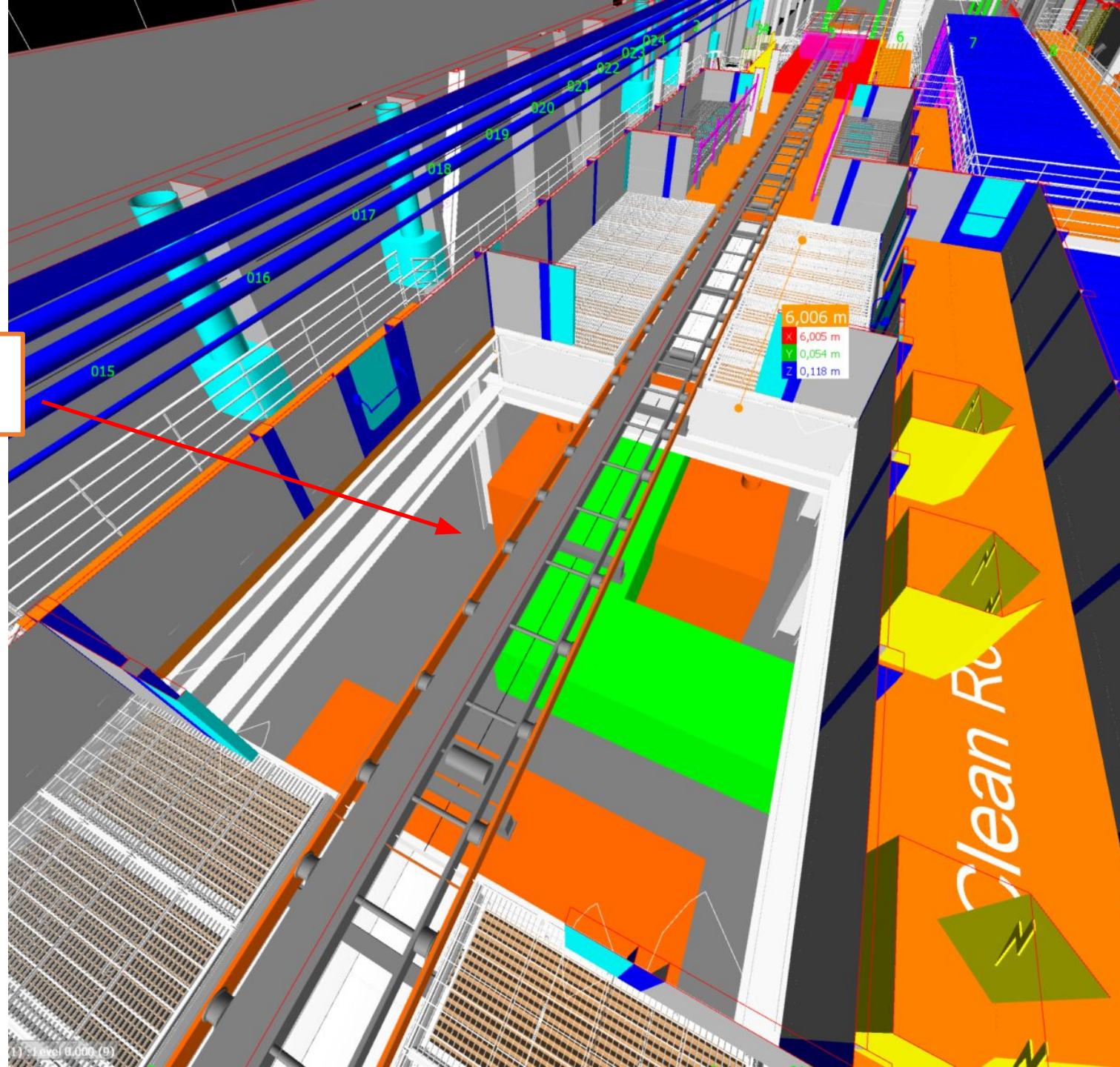
Axes 5-6/013-021





Axes 5-6/014-015

You forget the metal  
sheet and Omega Beam



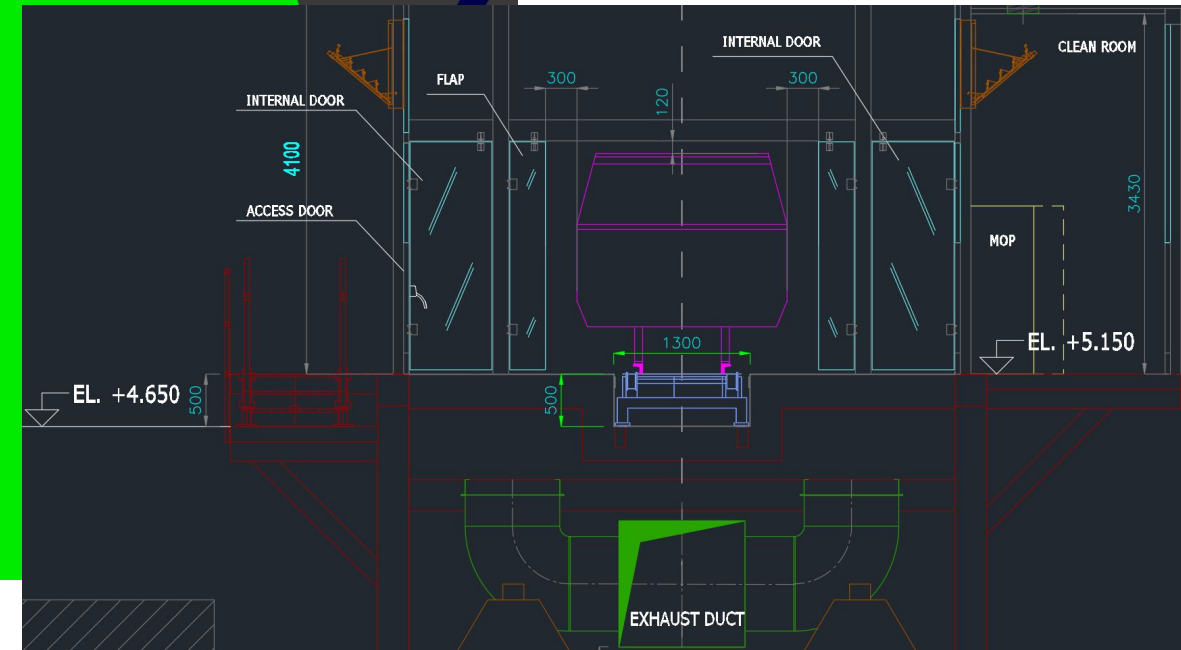


Axes 5-6/014-015

Full metal sheet plate  
(t=5mm)

As you will see from our Booth layout & sections, the omega's purpose is to place the conveyor roller-bed;  
Please check correct dimensions and elevation of the Omega steel profile in section H on drawing E540350033\_D10\_A

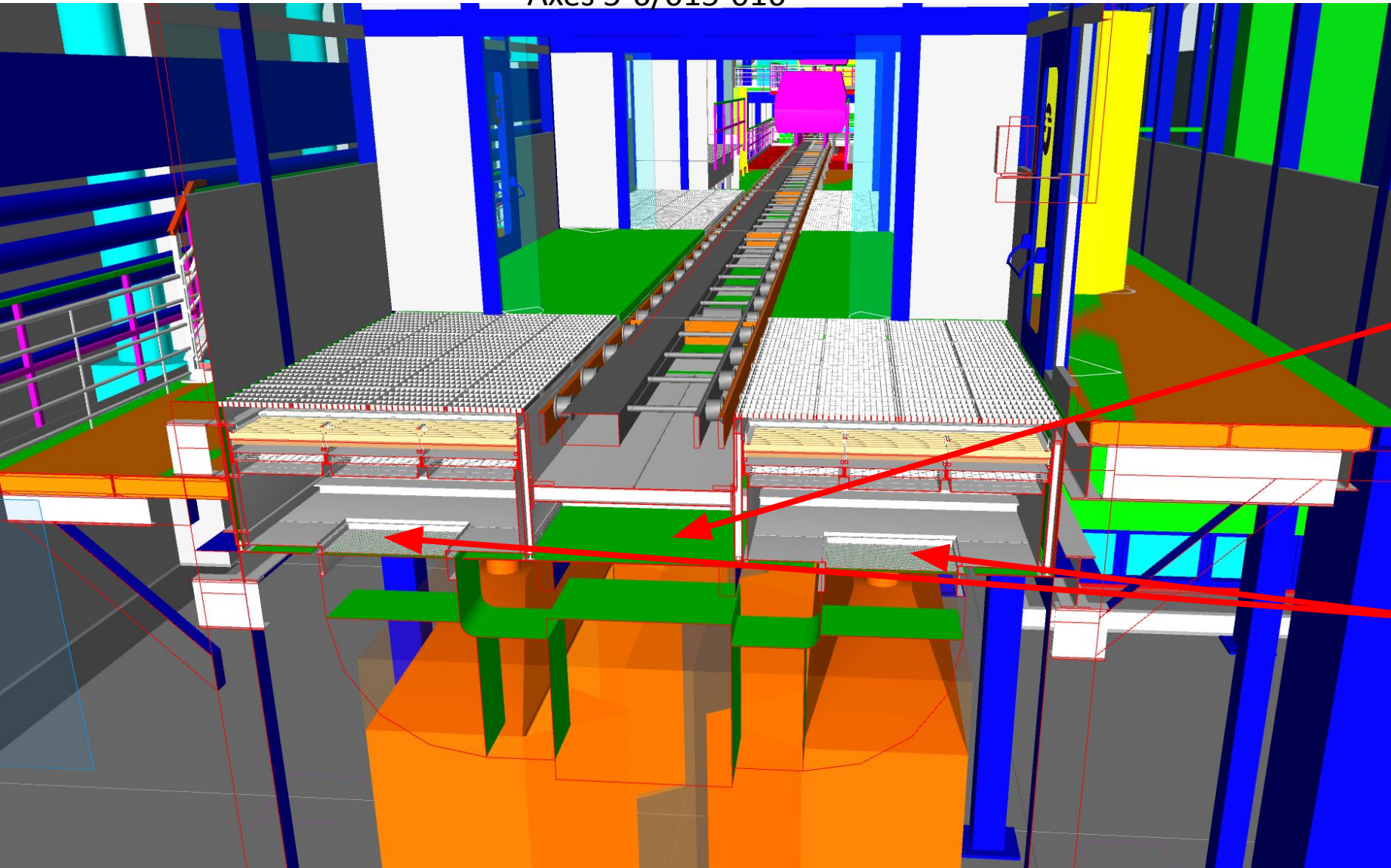
Side full metal sheet plate (non structural)  
only for gaps flashing  
(t=2÷3mm)



In Base coat and Clear coat zones we have lowered beams because we'll need to locate the **Drypan scrubber** (basically a big duct with filters) and the conveyor Roller-bed.

Axes 5-6/014-015

Axes 5-6/015-016



Please check our drawings (Booth layouts & sections, Drypan scrubber) for beams elevation;  
Basically in these zones the TOP of the cross beams shall be at -505mm from level 4,65m = 4,145m

The bottom of this «tank» will have to be covered by full metal sheet plate (t=5mm)

The tank floor will have to foresee two holes 950x950mm (one per side) for Extraction ducts, see layouts for location

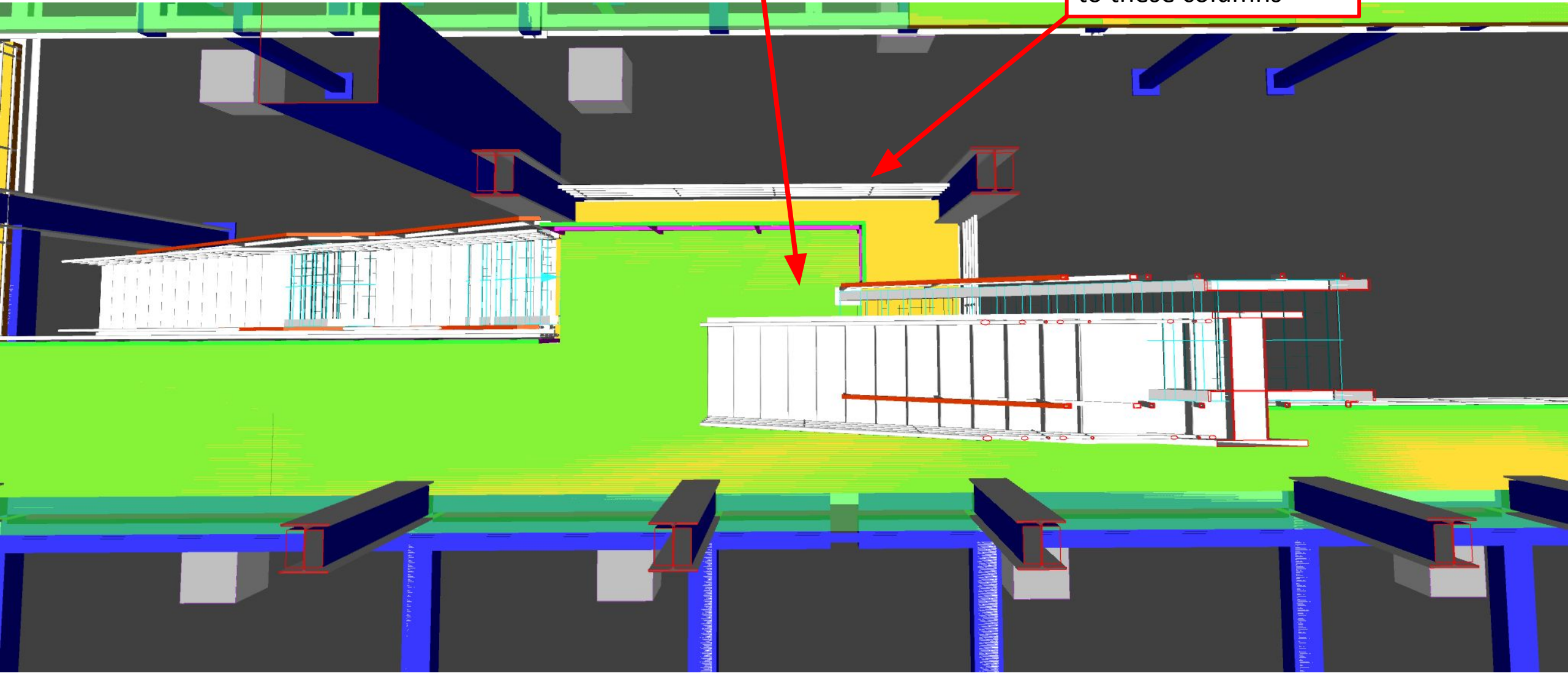


Platform A1 – Oven area

Axes 7/013-014

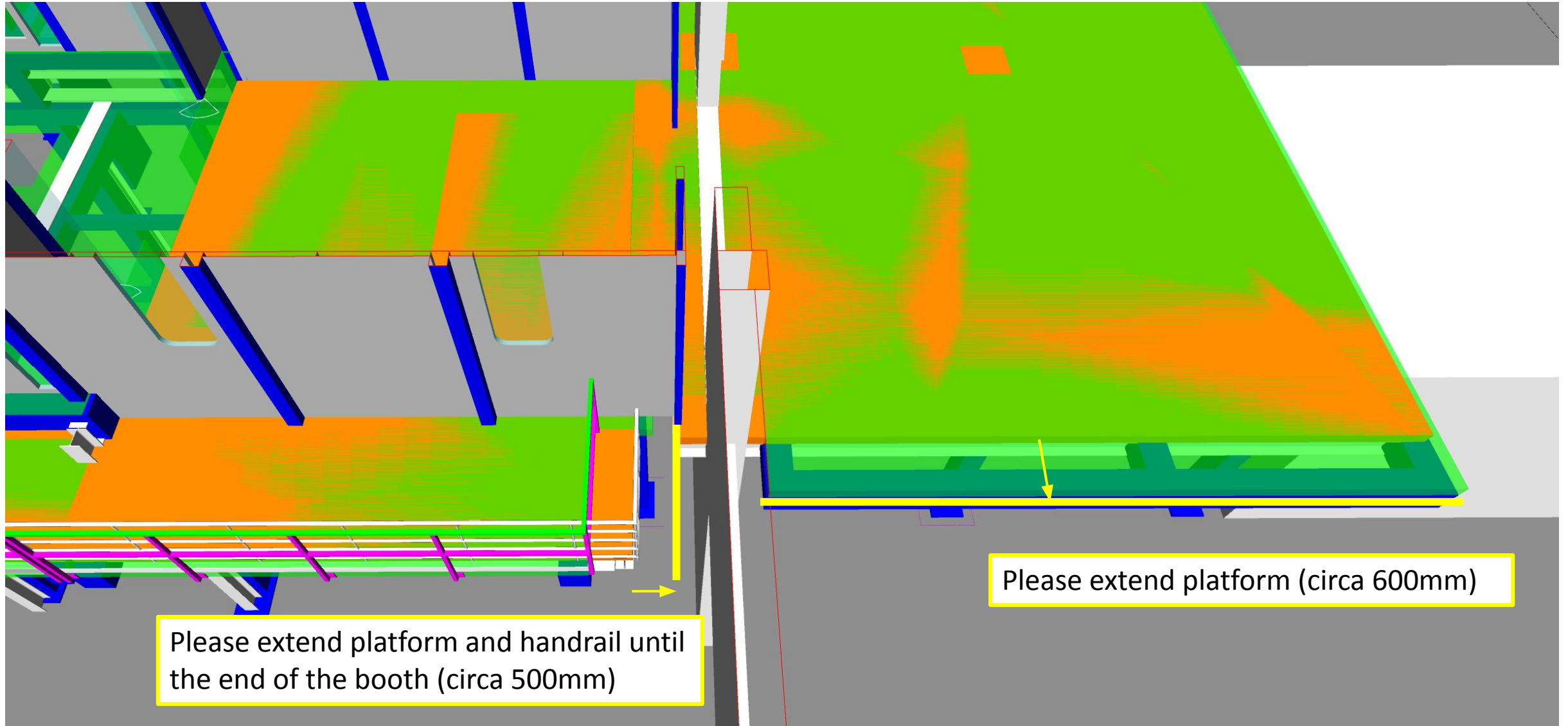
In this zone the stair that goes on 9,80m level is not aligned to ours

OK to extend platform to these columns



Zone: before/after the Heat wall

Axes 5/012



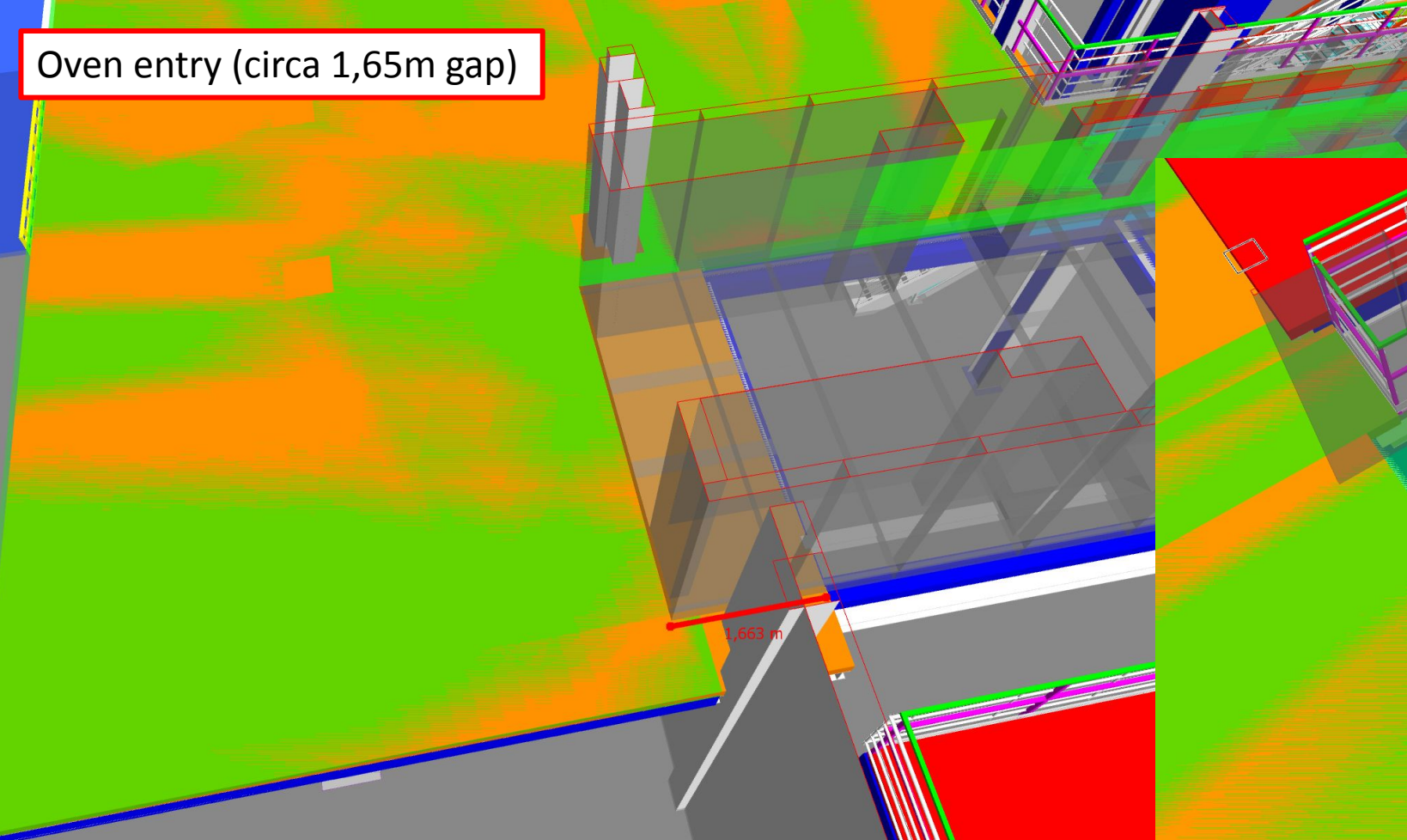


## Platform A1 – Oven area

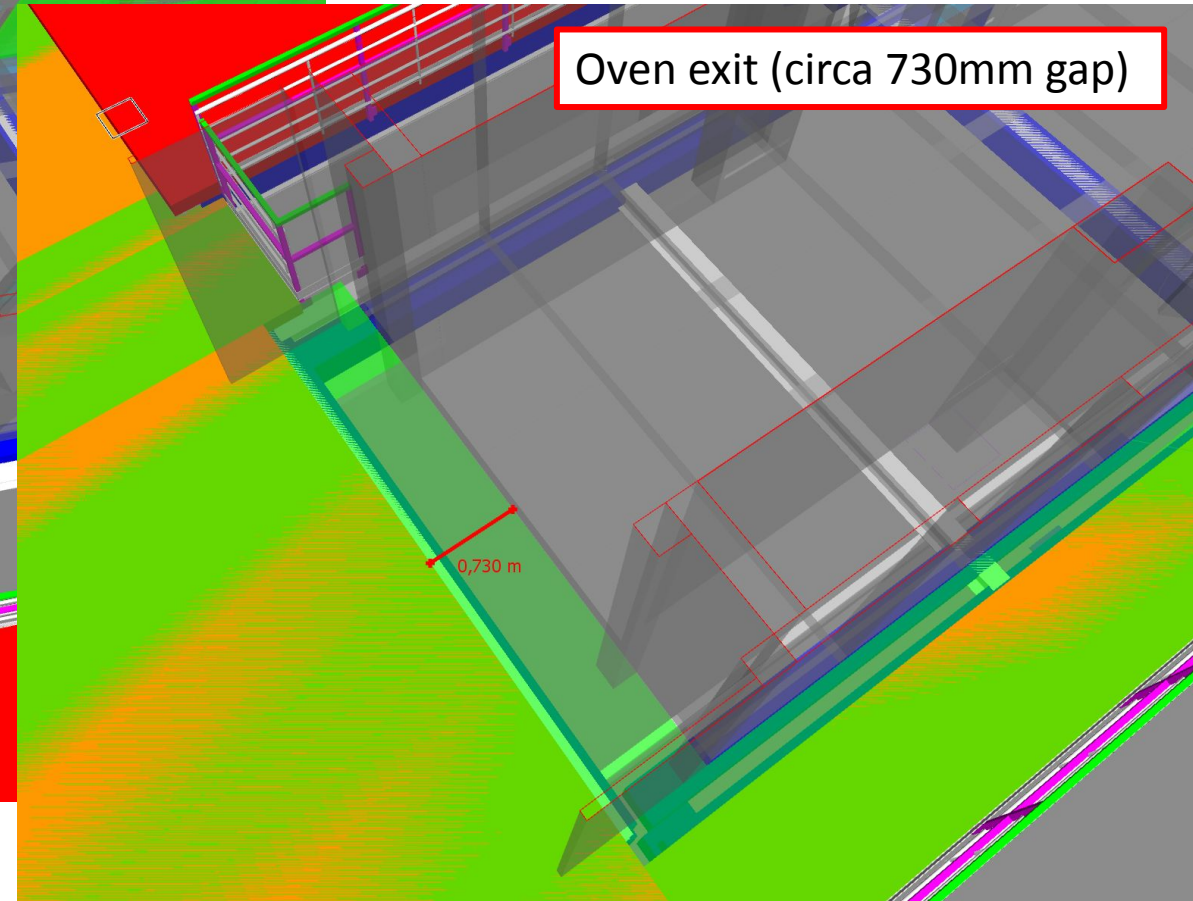
Be sure to respect Oven perimeter when modeling walkable modules around it

Axes 8/012

Oven entry (circa 1,65m gap)



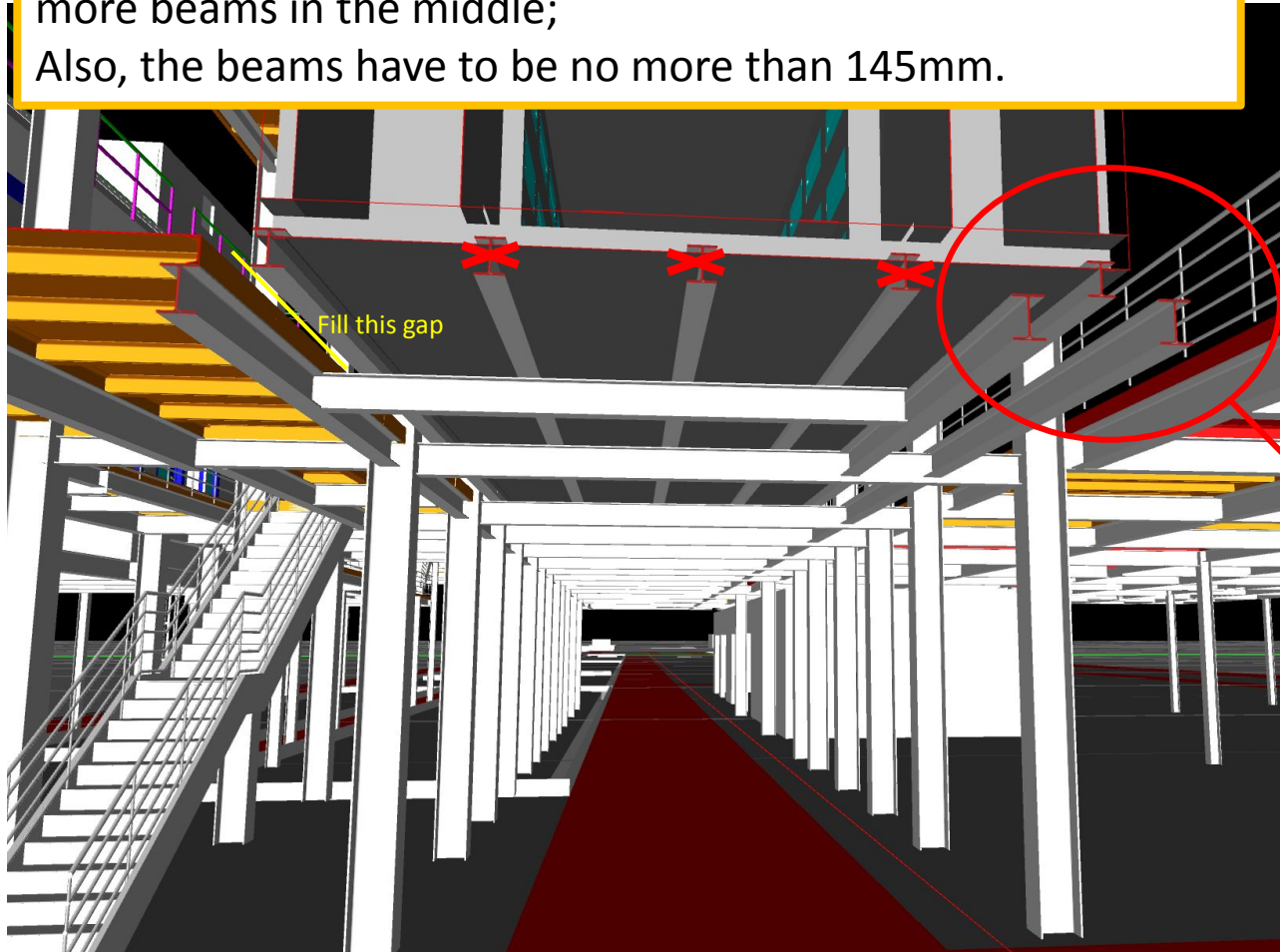
Oven exit (circa 730mm gap)



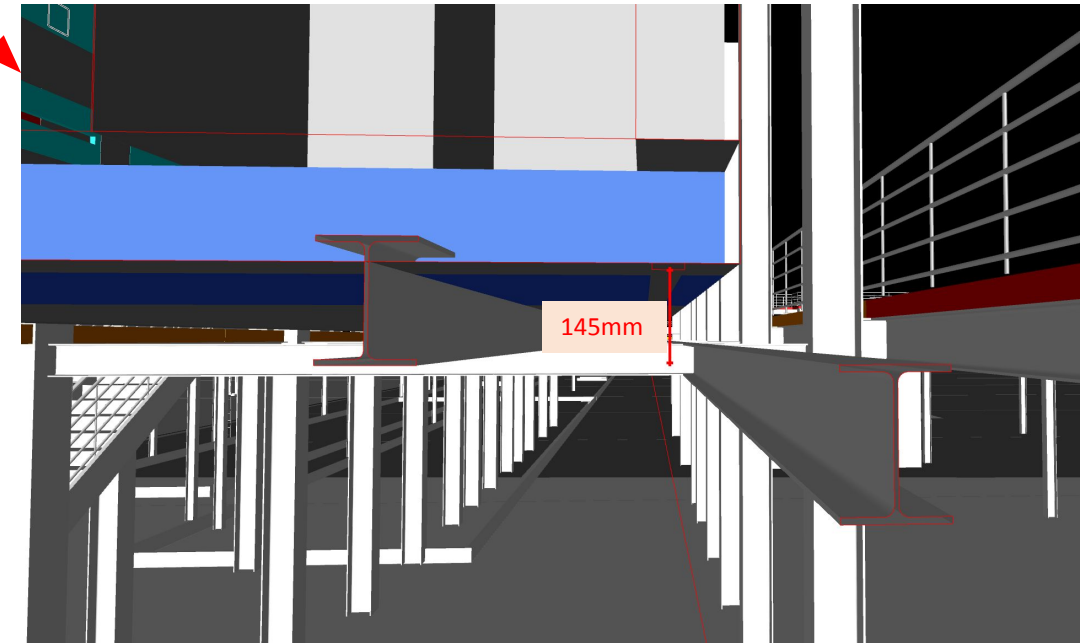
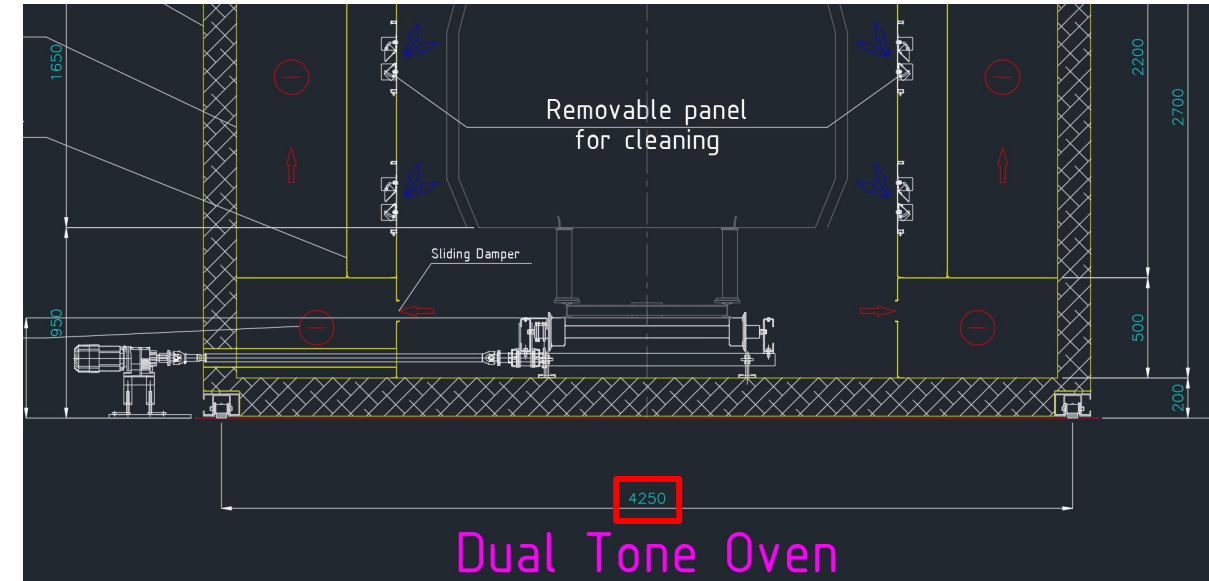
## Platform A1 – Oven area

Oven center axis is positioned 3m west of axis 8

Update (08/06): the Oven load is only transferred to the two longitudinal beams on each side, there's no need to put more beams in the middle;  
Also, the beams have to be no more than 145mm.



Axes 7-8/013

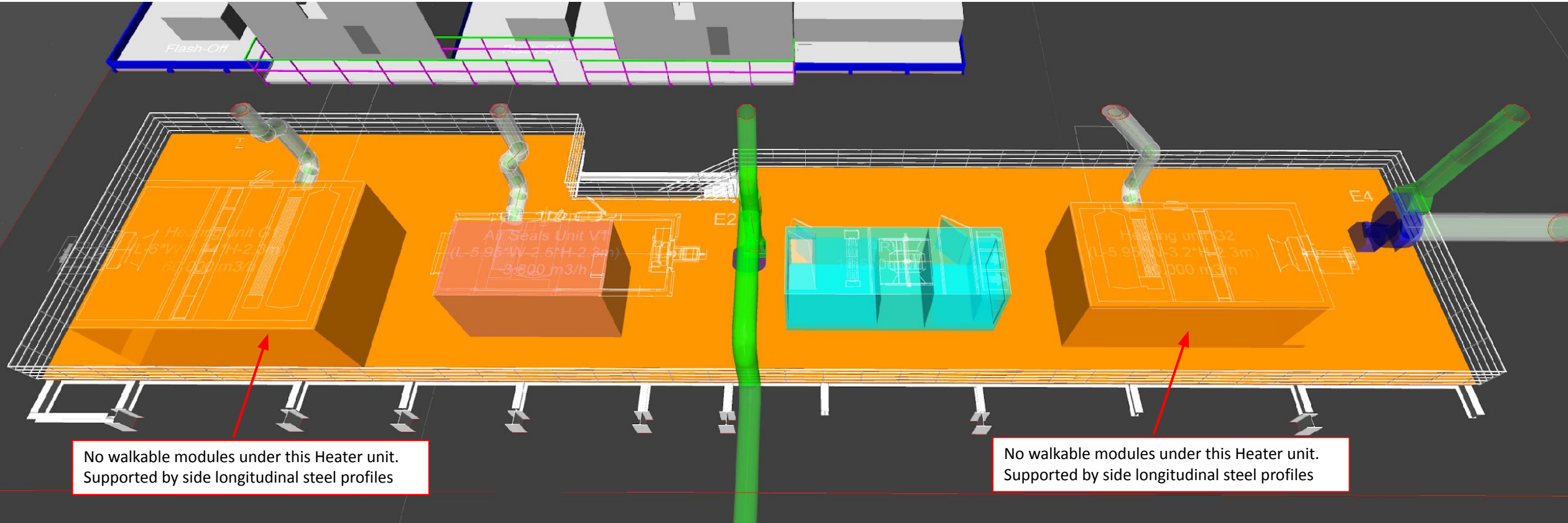




## Platform D

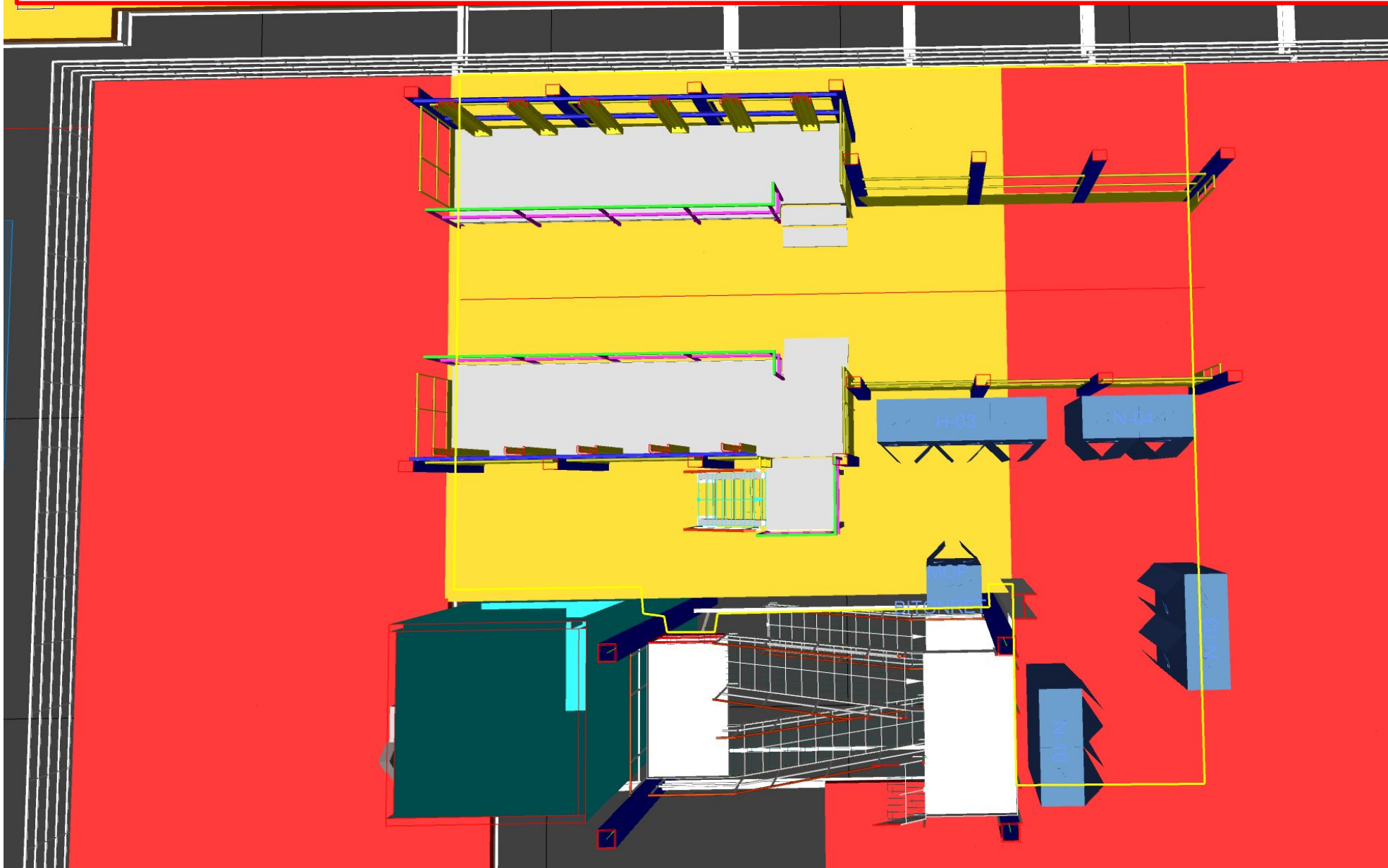
Axes 7-8/012-019

Keep in mind that we have ducts penetrating platforms under the two Heater groups, these ducts will have insulation (150mm all around).  
I will submit information about these duct location in order to avoid clash with supporting beams



Platform A2 – Demasking & IRC area (axes 8-10/013-015):

The area to be covered with walkable modules shall be the one circled in Yellow, basically under the two open Booths and under Electrical cabinets, as shown on General Layout uploaded in drive on 04 April (rev E – in progress)

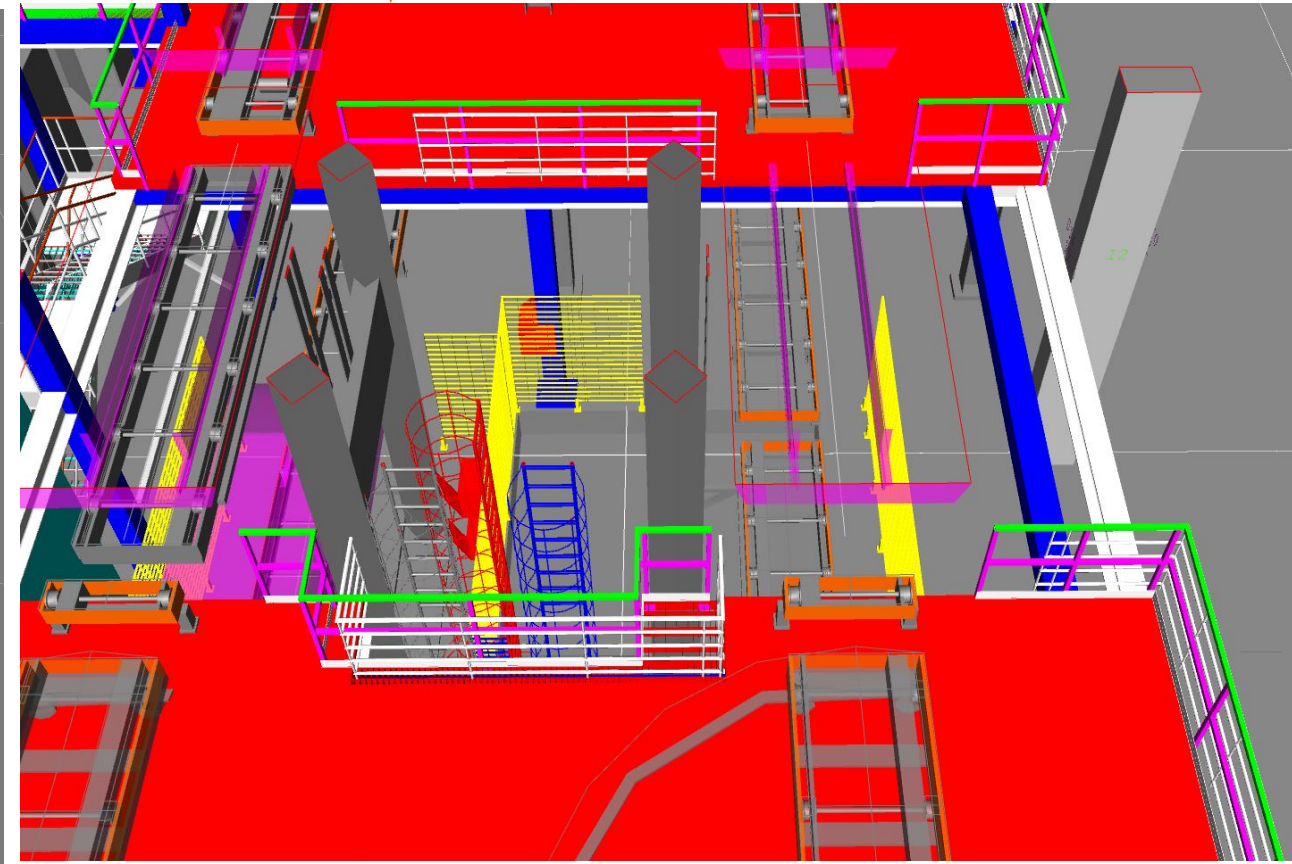
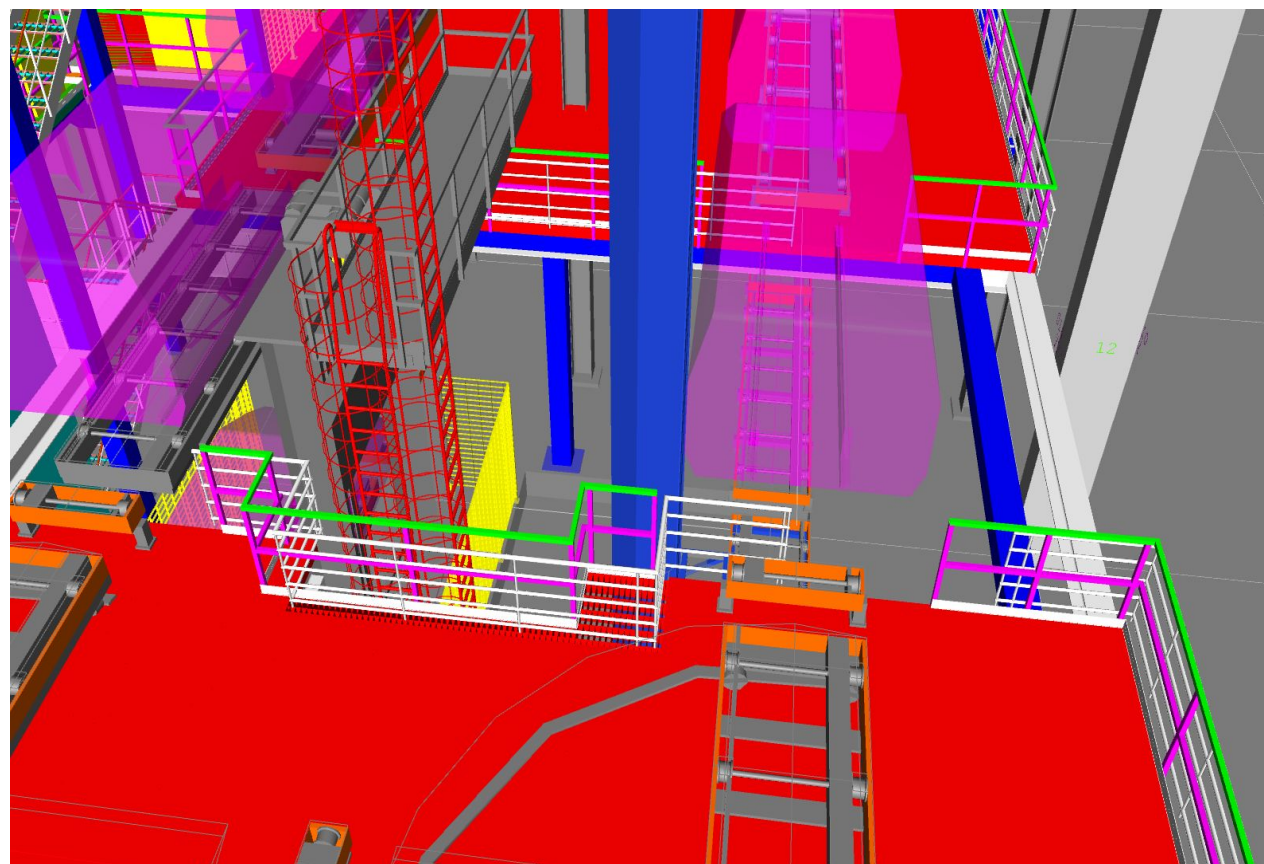


Update:  
Comment still valid



Platform A2 – Elevators area (axes 10-12/013-014):

Update:  
Still not correct, use General  
layout to see handrails and  
platform configuration!



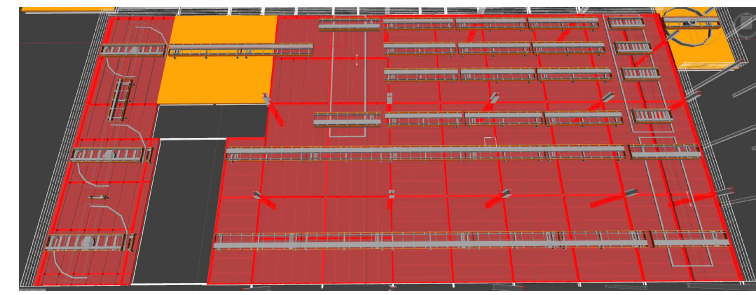
Platform A2: remember to provide holes with kick-plates around existing columns and bracing (typical) Axes 11-12/014-018



Update:  
Comment still valid.  
Not priority at the moment but  
keep it in mind for KM design



Platform A2: finally we need to discuss about longitudinal support for Conveyor  
Roller-beds, turning tables and transfer-tables  
I will send this information after I have discussed with my colleague from Conveyor dpt  
Axes 10-12/014-020



As I told you last time I need to give you precise info of where to support the conveyor tables (roller-beds, transfer table, turning table)  
In the meantime consider the ones in these pictures (for conveyor center-lines use the Gen. Layout)

