

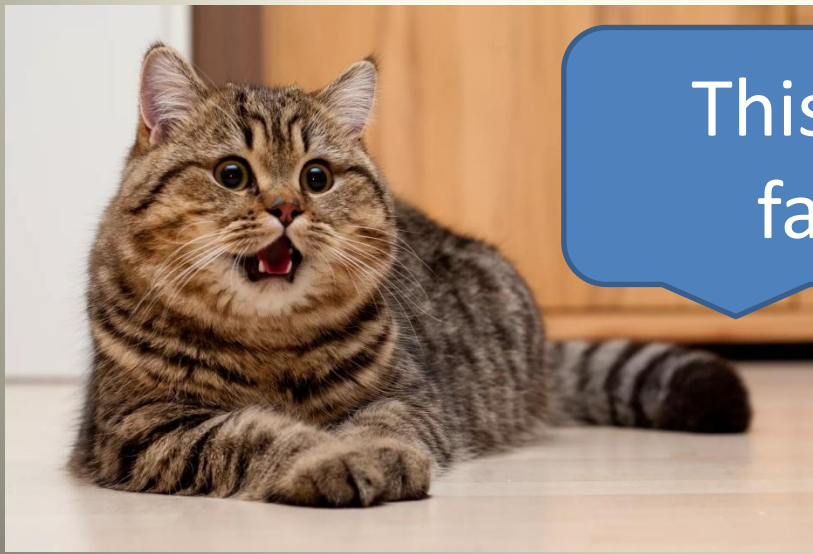
***СТЕПЕНИ
СРАВНЕНИЯ
ПРИЛАГАТЕЛЬНЫХ***



This cat is
fat.



This cat is
the fattest.



This cat is
fatter.

**положительн
ая**

сравнительна

я



er

превосходная



est

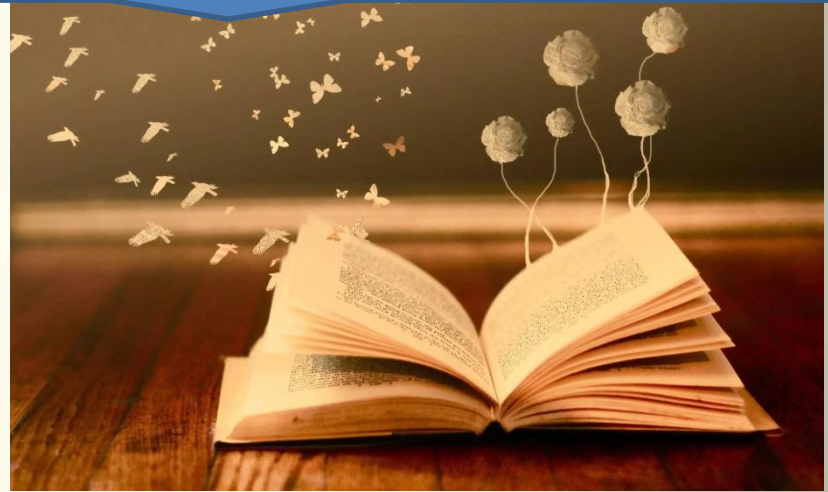
Spelling:

положительн ая	сравнительна я	превосходная
long	longer	longest
nice	nicer	nicest
big	bigger	biggest
funny	funnier	funniest



It is interesting.

It is the most interesting.



It is more interesting.



ИСКЛЮЧЕНИЯ:

Good-better-the best

Bad – worse- the worst

Many/much- more- the most

Little – less- the least