

What Am I?

The Zoo Vet



What Am I?



I sometimes have brown patches.



I eat leaves off trees.



I have a long neck.



What am I?

Click on me to reveal the answer.

I am a giraffe!



Start

Next

What Am I?



I am a type of big cat.



I have sharp claws.



I have stripes.



What am I?

Click on me to reveal the answer.

I am a tiger!



Previous

Next



What Am I?



I live in the trees.



I have long arms.



I have orangey-brown hair.



What am I?

Click on me to reveal the answer.

I am an orangutan!

Previous

Next



What Am I?



I am very slow.



I can live for more than 200 years.



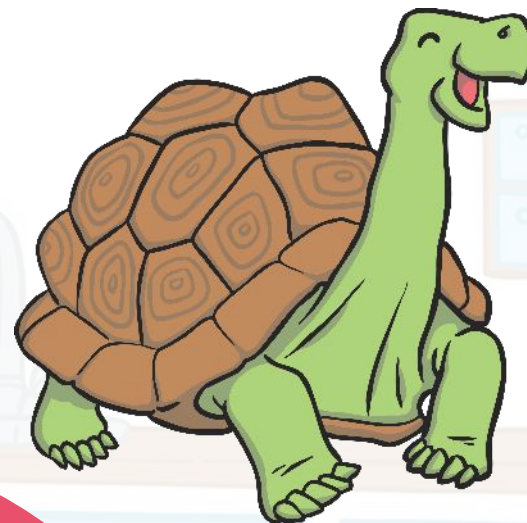
I have a hard shell.



What am I?

Click on me to reveal the answer.

I am a tortoise!



Previous

Next

What Am I?



I can be very long.



I have scales.



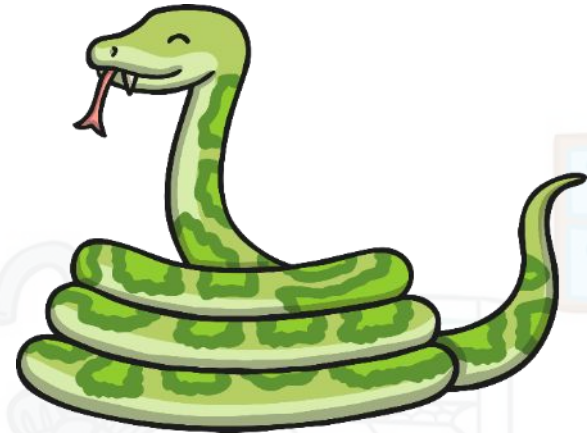
I don't have any arms or legs.



What am I?

Click on me to reveal the answer.

I am a
snake!



Previous

Next

What Am I?



I climb trees.



I am a type of lizard.



I can change colour.



What am I?

Click on me to reveal the answer.

I am a
chameleon!



Previous

Next

What Am I?



I have wings.



I have long legs.



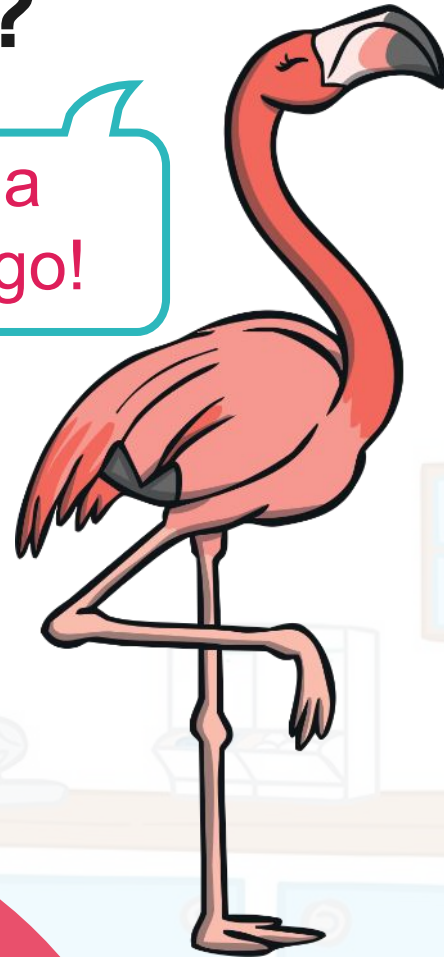
I am pink.



What am I?

Click on me to reveal the answer.

I am a
flamingo!



Previous

Next



What Am I?



I have big ears.



I am the largest animal you can find on land.



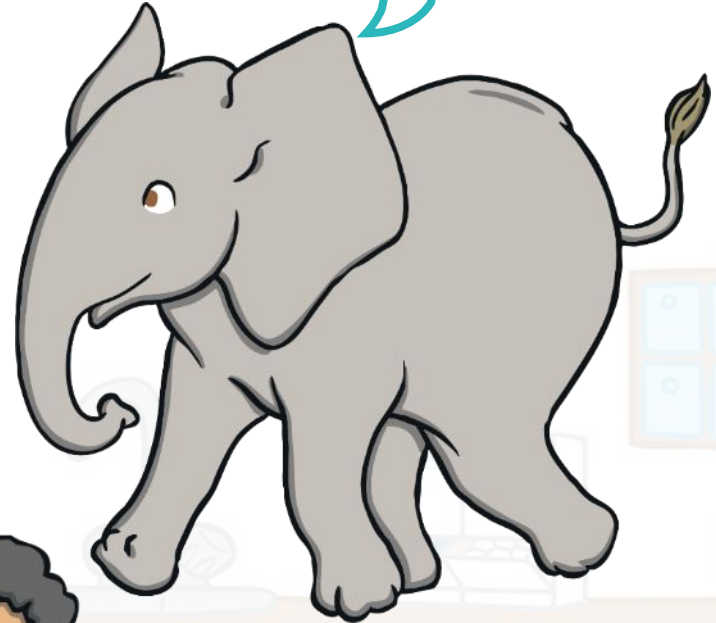
I have a very long nose.



What am I?

Click on me to reveal the answer.

I am an elephant!



Previous

Next

What Am I?



I eat bamboo.



I am a type of bear.



I am black and white.



What am I?

Click on me to reveal the answer.

I am a panda!



Previous

Next



What Am I?



I have wings but can't fly.



I usually live in cold places.



I am a very good swimmer.



What am I?

Click on me to reveal the answer.

I am a penguin!



Previous

End



twinkl