

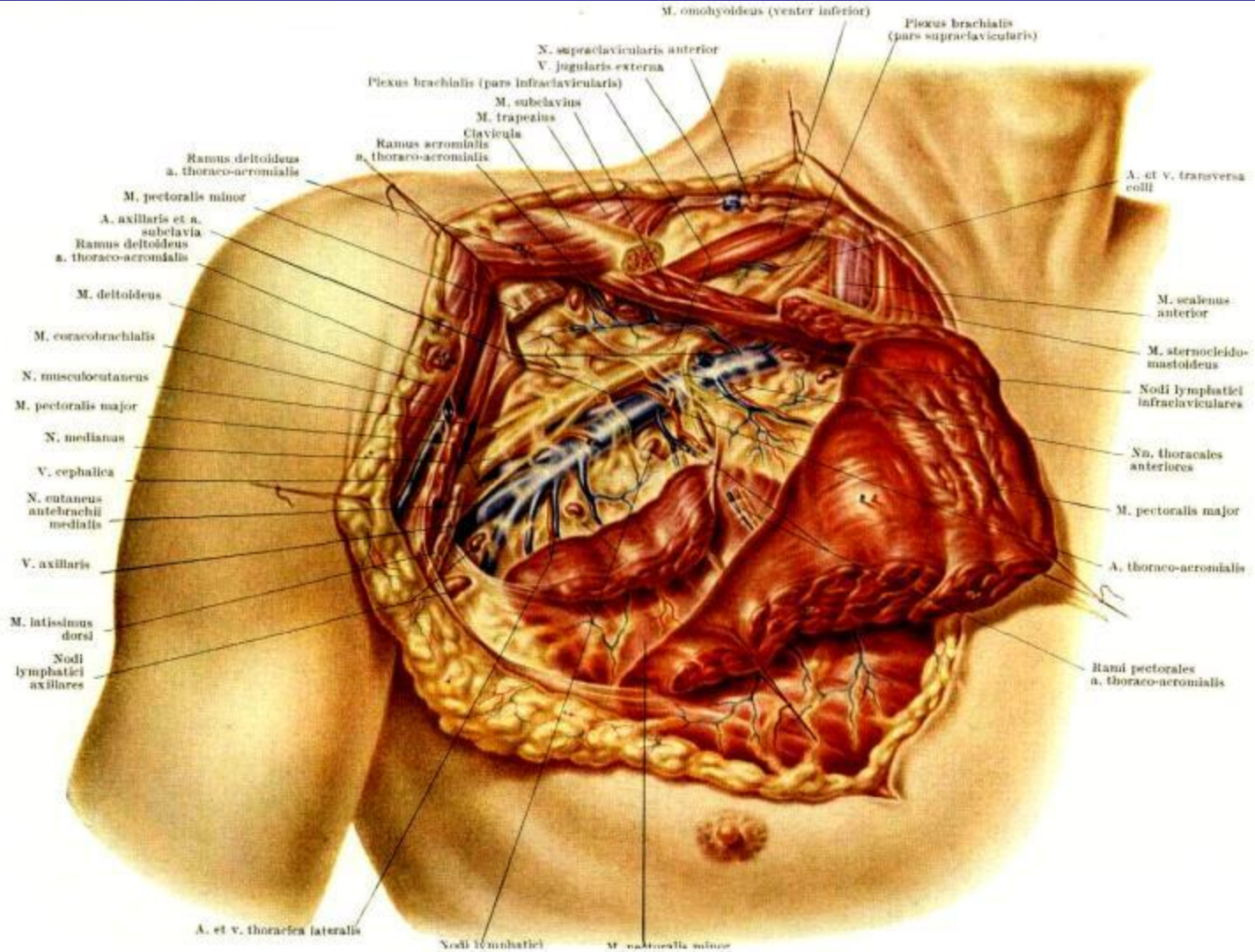
**Хирургическая  
анатомия  
периферических  
сосудов**

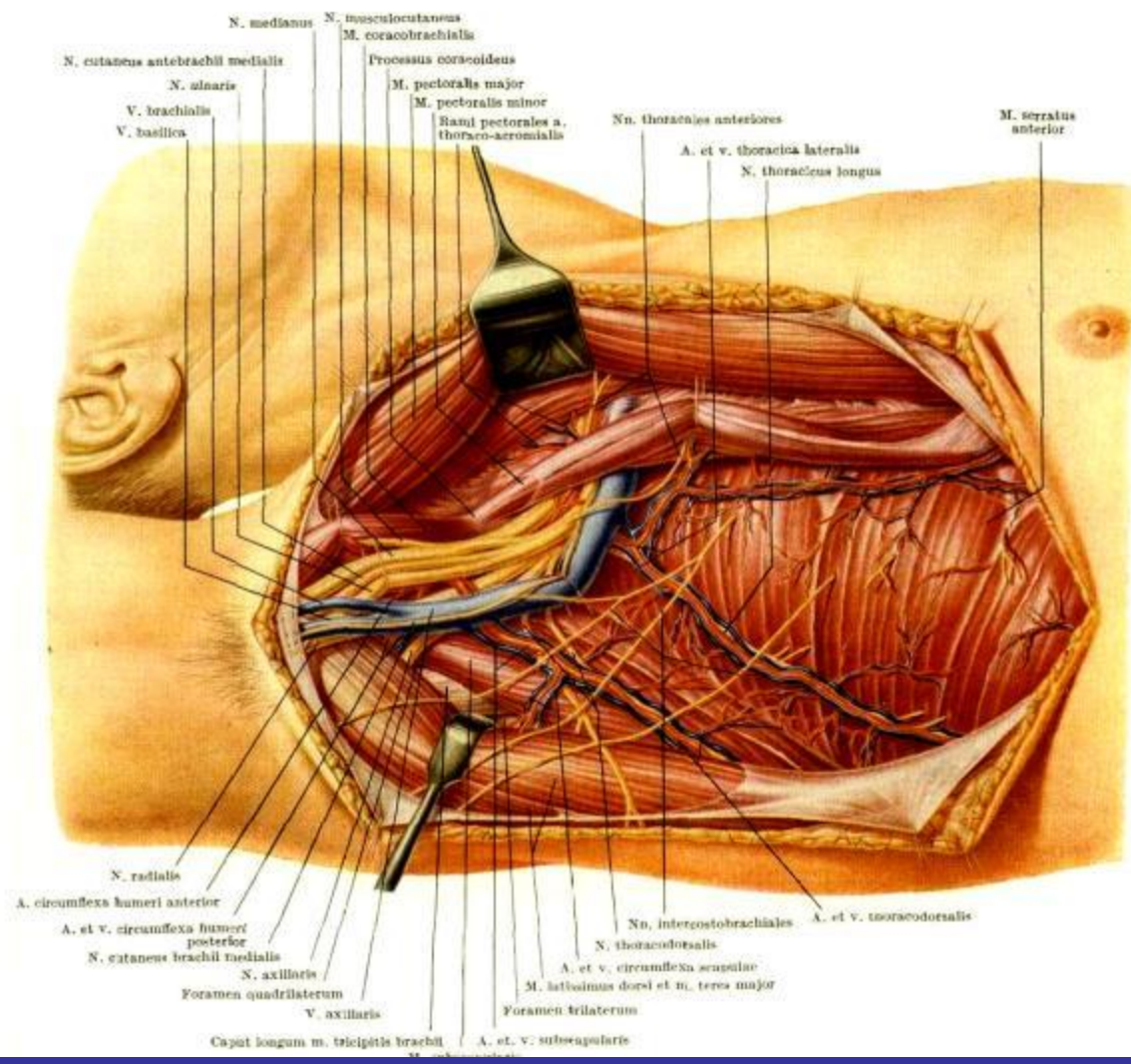
**1. Хирургическая анатомия сосудов верхней и нижней конечностей.**

**2. Проекция сосудисто-нервных пучков конечностей**

**3. Доступы к сосудисто-нервным пучкам конечностей**

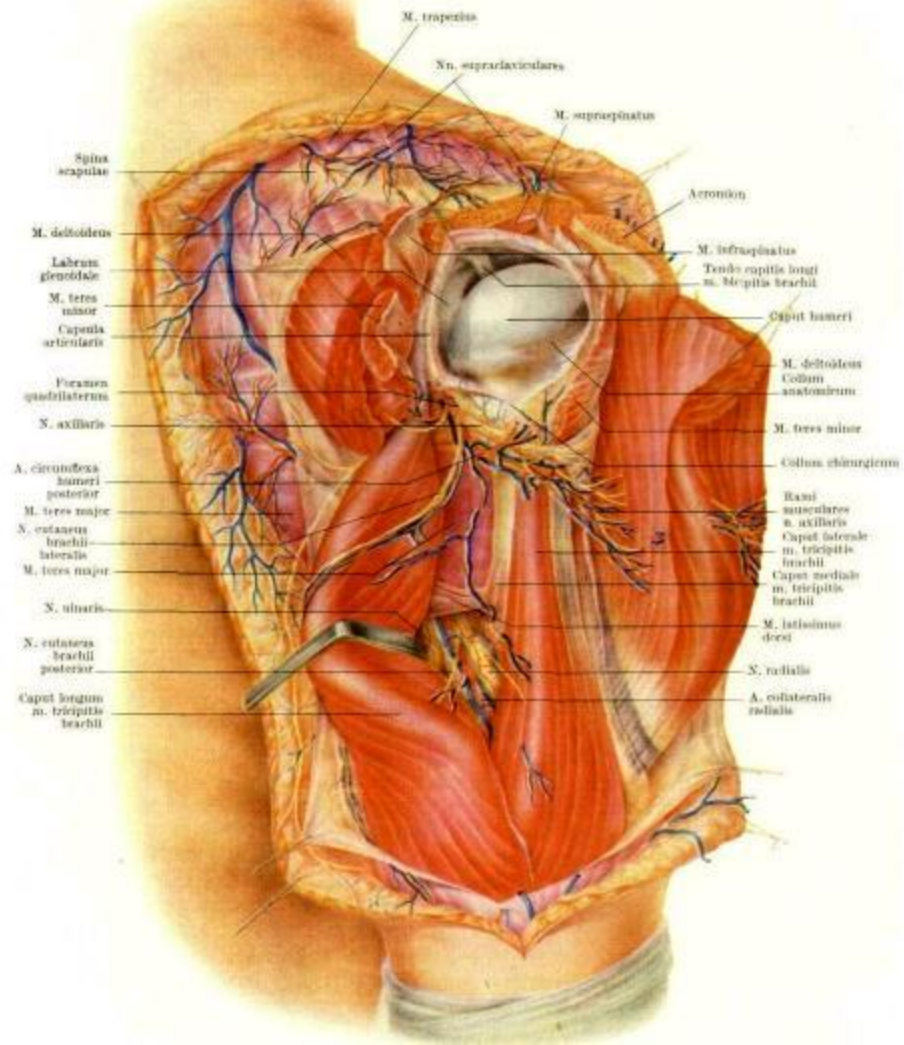
**4. Операции на сосудах.**

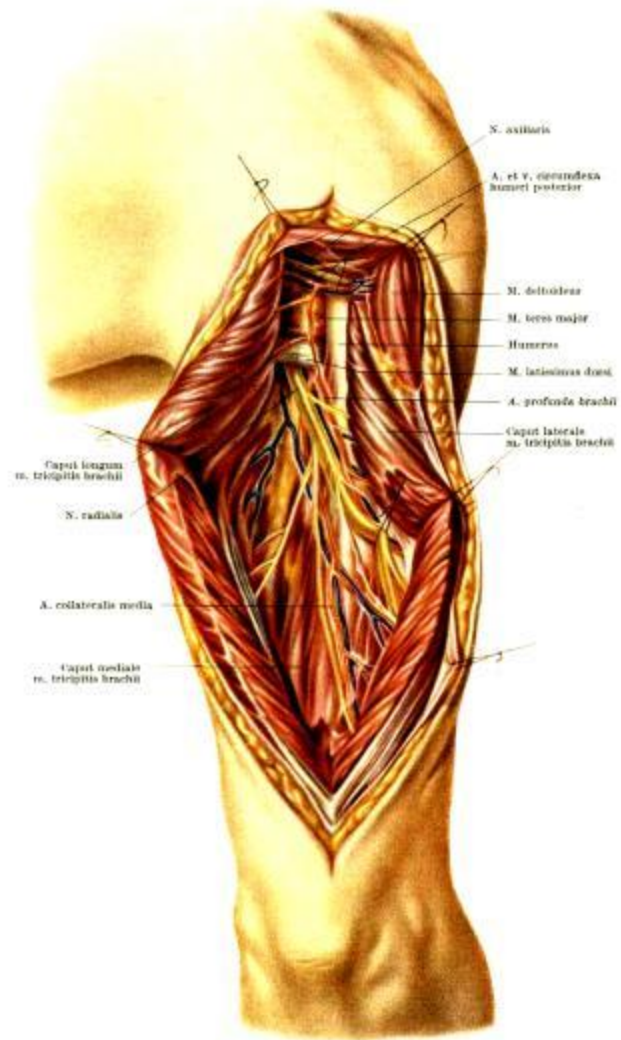


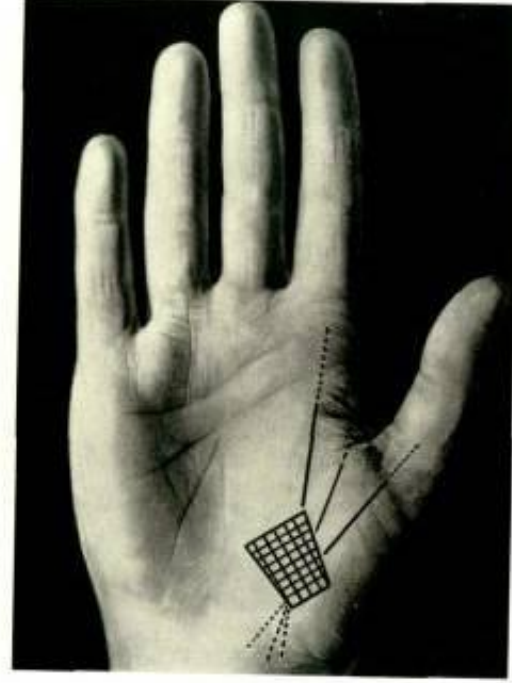
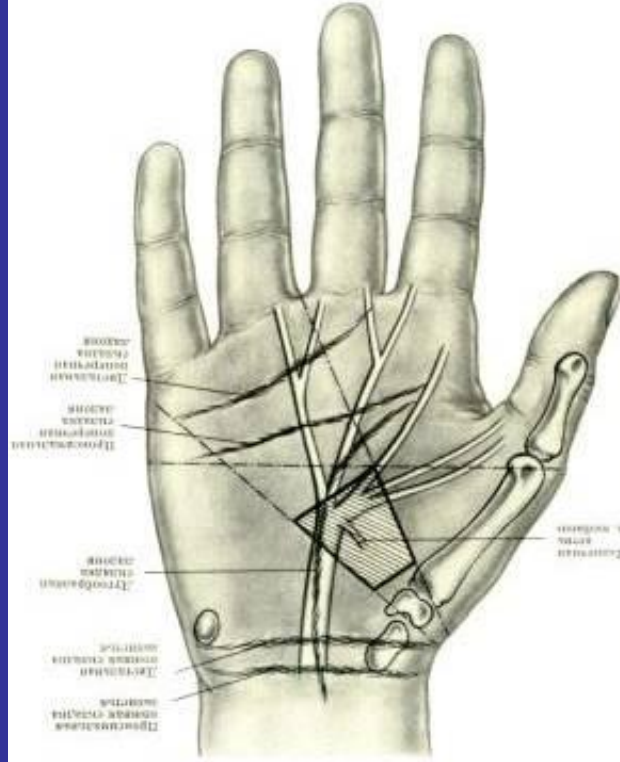


N. medianus    N. musculocutaneus  
 M. coracobrachialis  
 N. cutaneus antebrachii medialis  
 N. ulnaris  
 V. brachialis  
 V. basilica  
 Processus coracoideus  
 M. pectoralis major  
 M. pectoralis minor  
 Rami pectorales a. thoraco-acromialis  
 Nn. thoracales anteriores  
 A. et v. thoracica lateralis  
 N. thoracicus longus  
 M. serratus anterior

N. radialis  
 A. circumflexa humeri anterior  
 A. et v. circumflexa humeri posterior  
 N. cutaneus brachii medialis  
 N. axillaris  
 Foramen quadrilaterum  
 V. axillaris  
 Caput longum m. tricipitis brachii  
 Nn. intercostobrachiales  
 A. et v. thoracodorsalis  
 N. thoracodorsalis  
 A. et v. circumflexa scapularis  
 M. latissimus dorsi et m. teres major  
 Foramen trilaterum  
 A. et v. subscapularis

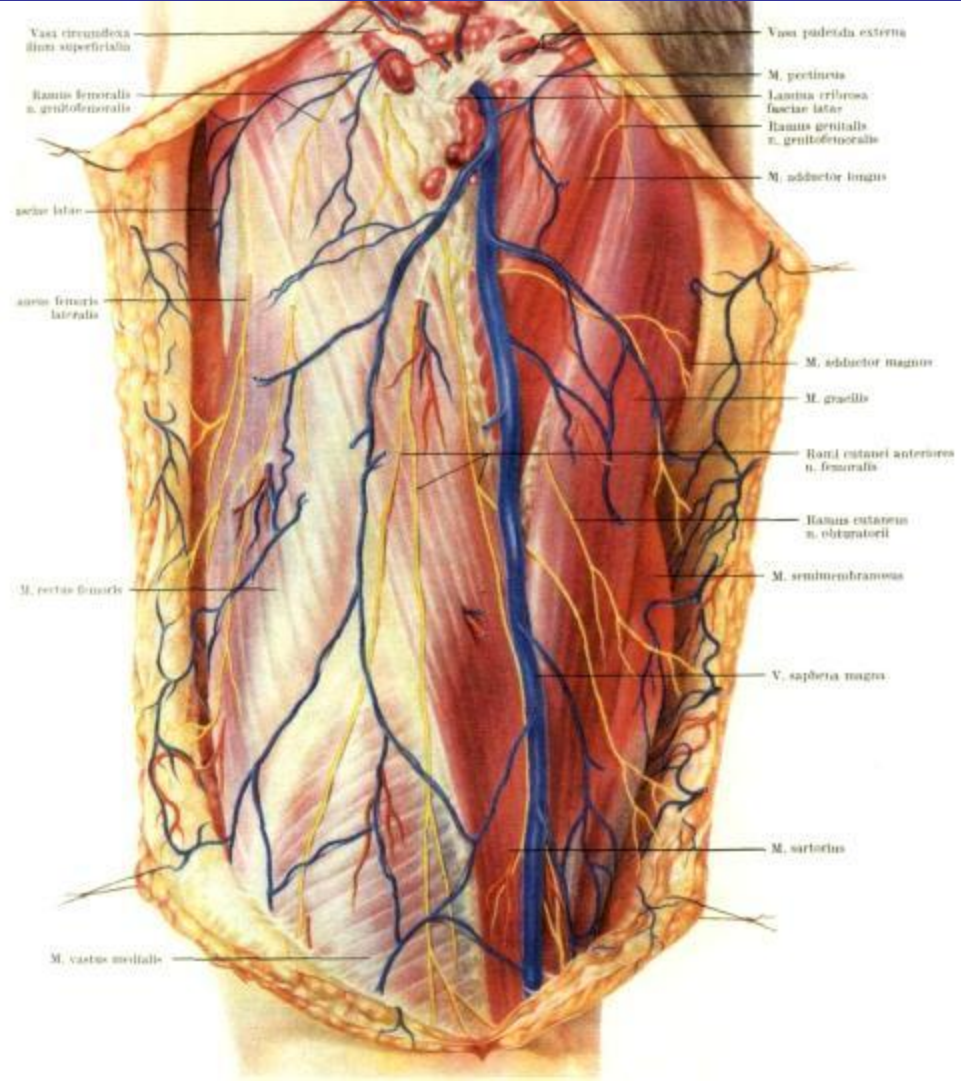


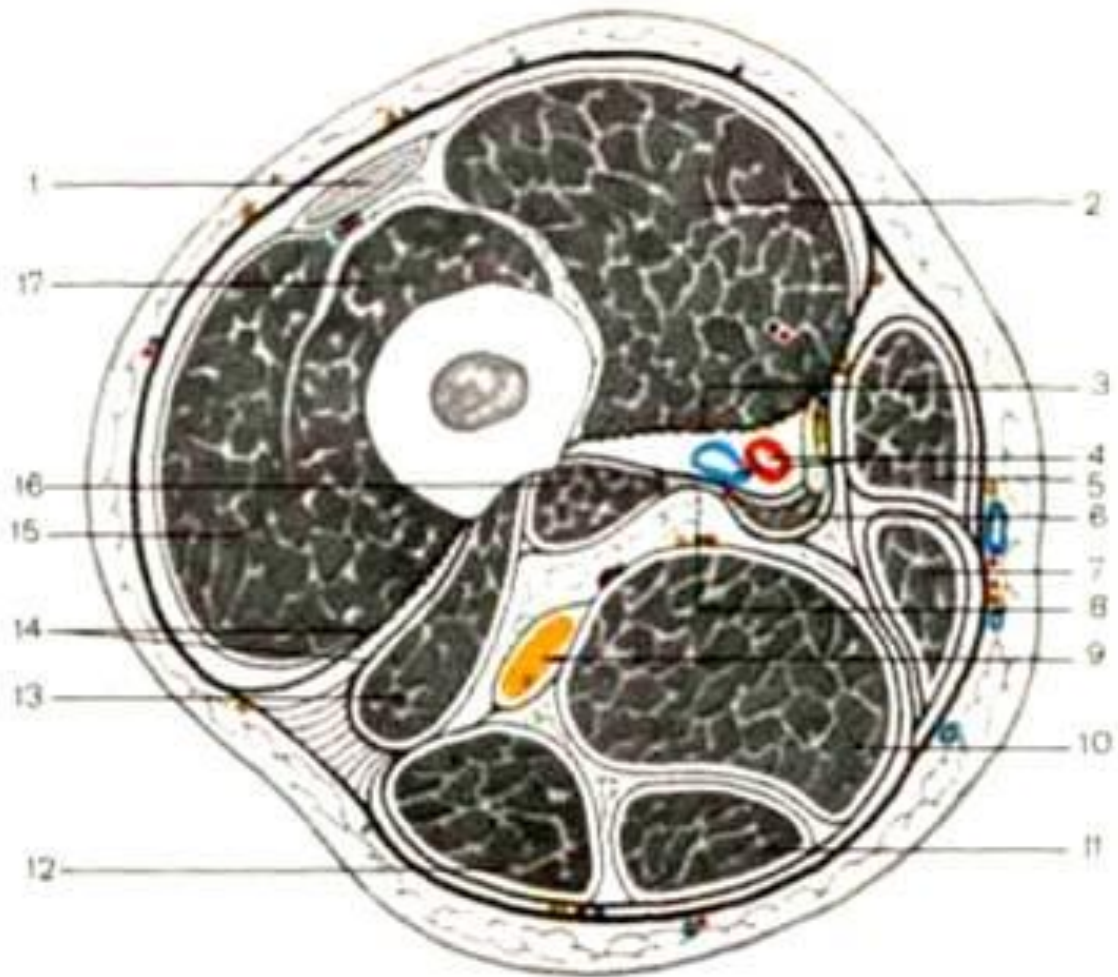


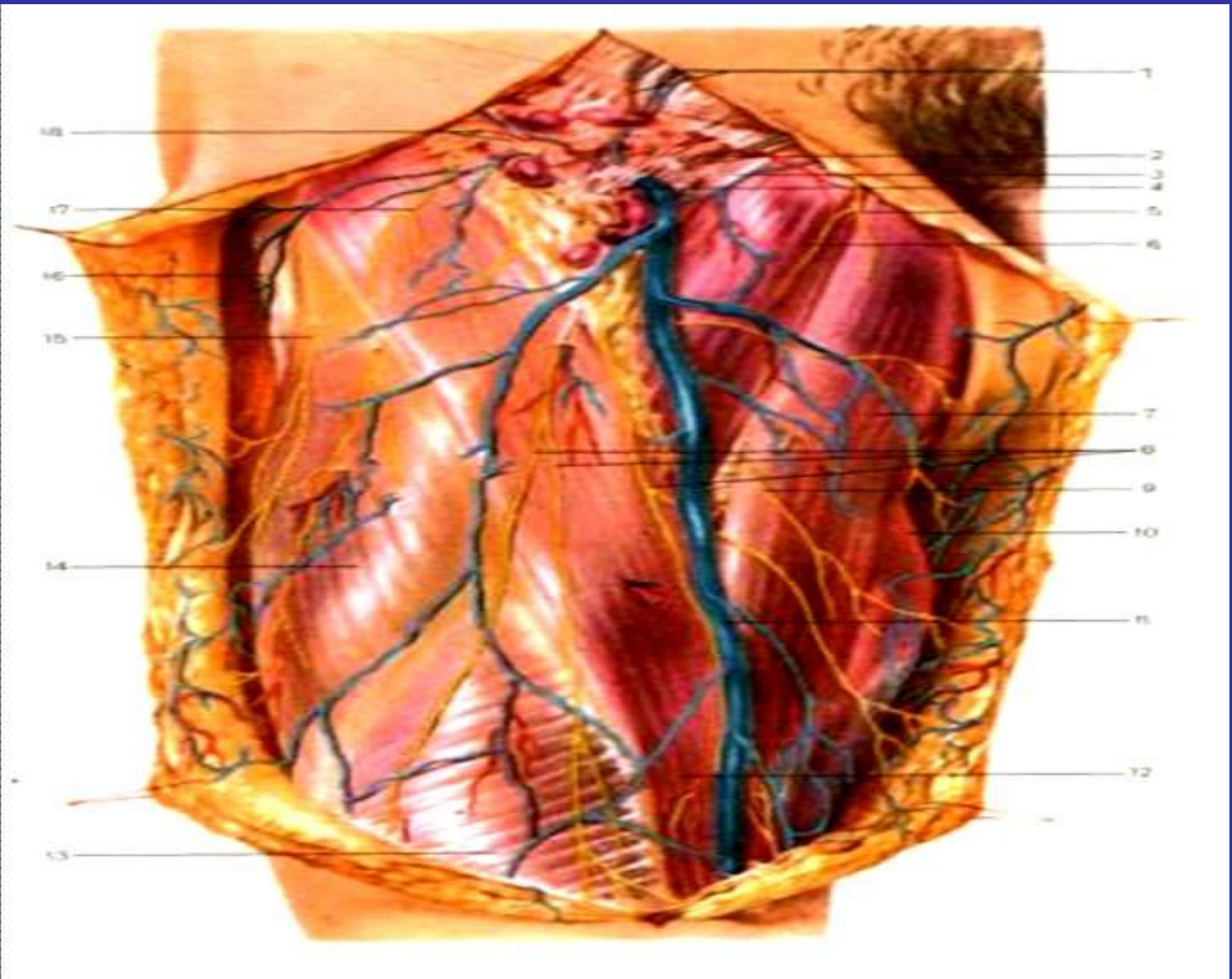


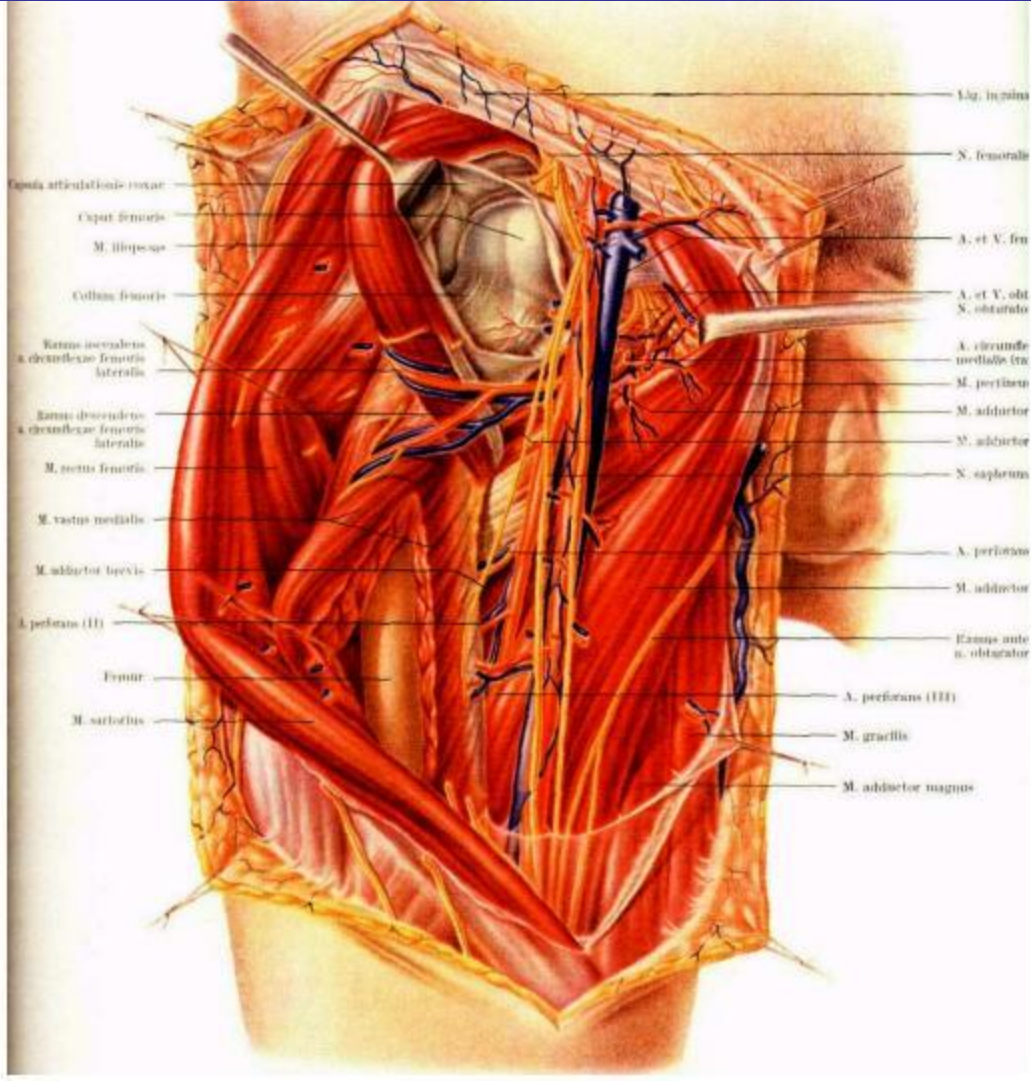


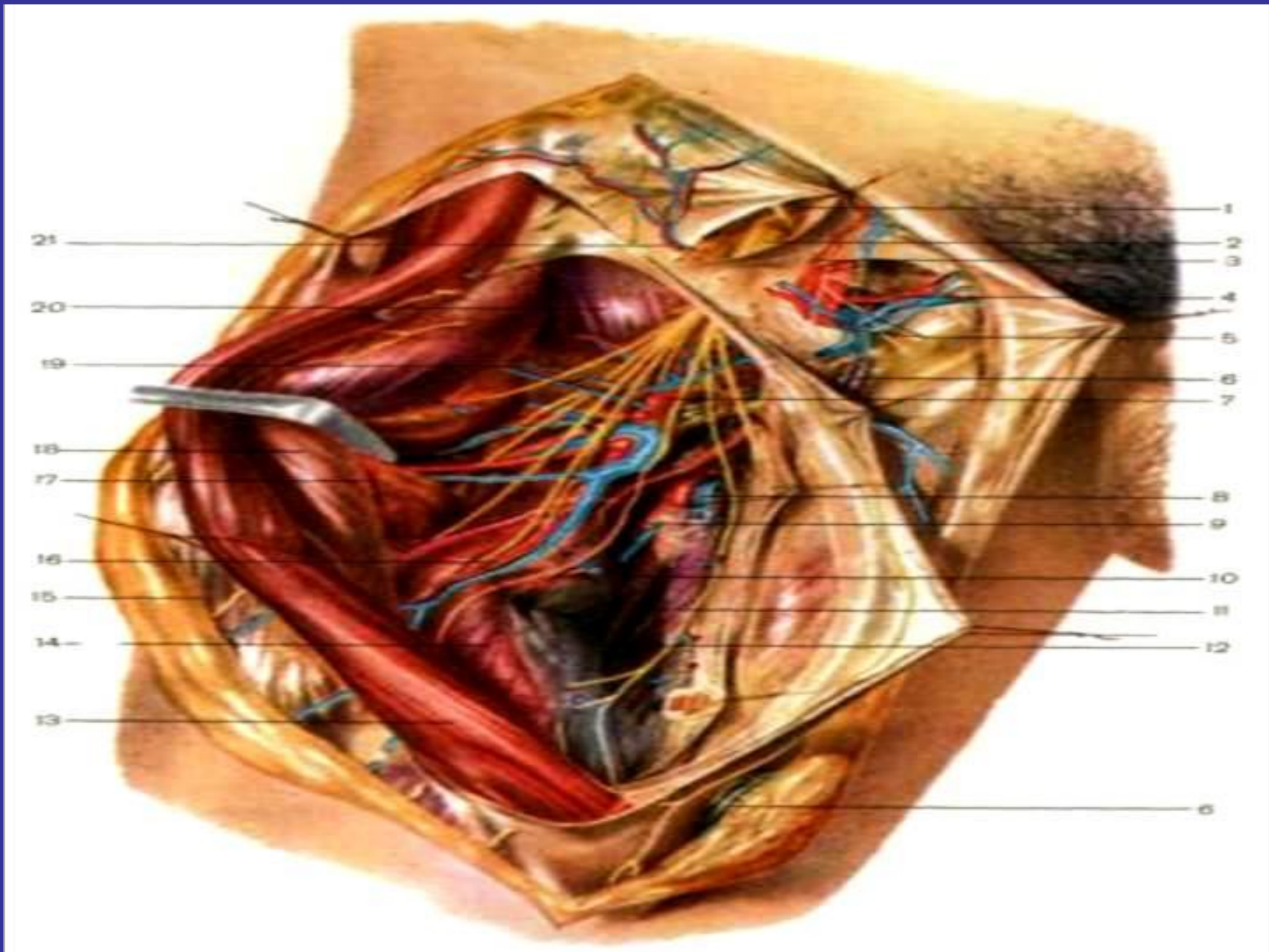


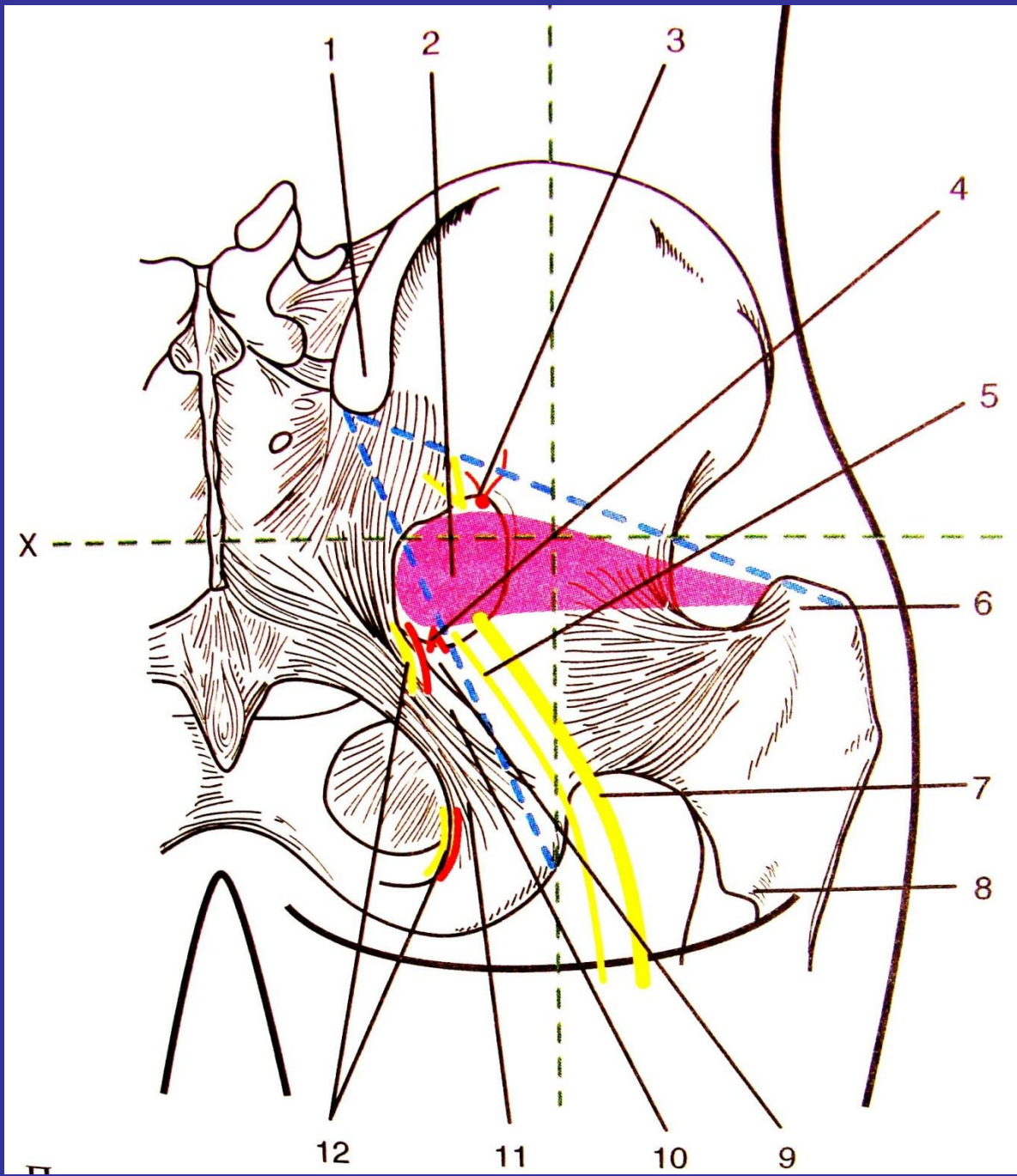


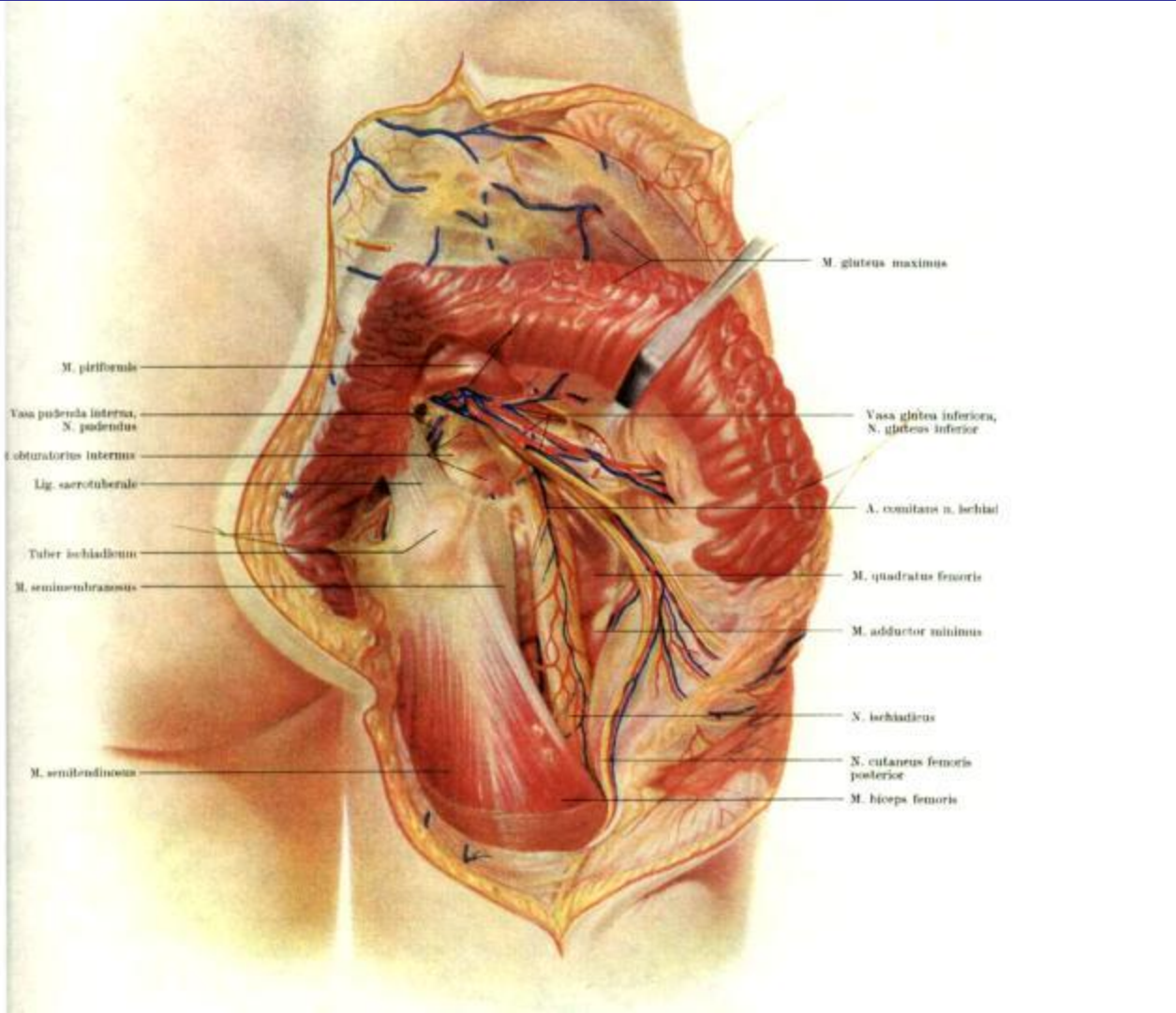


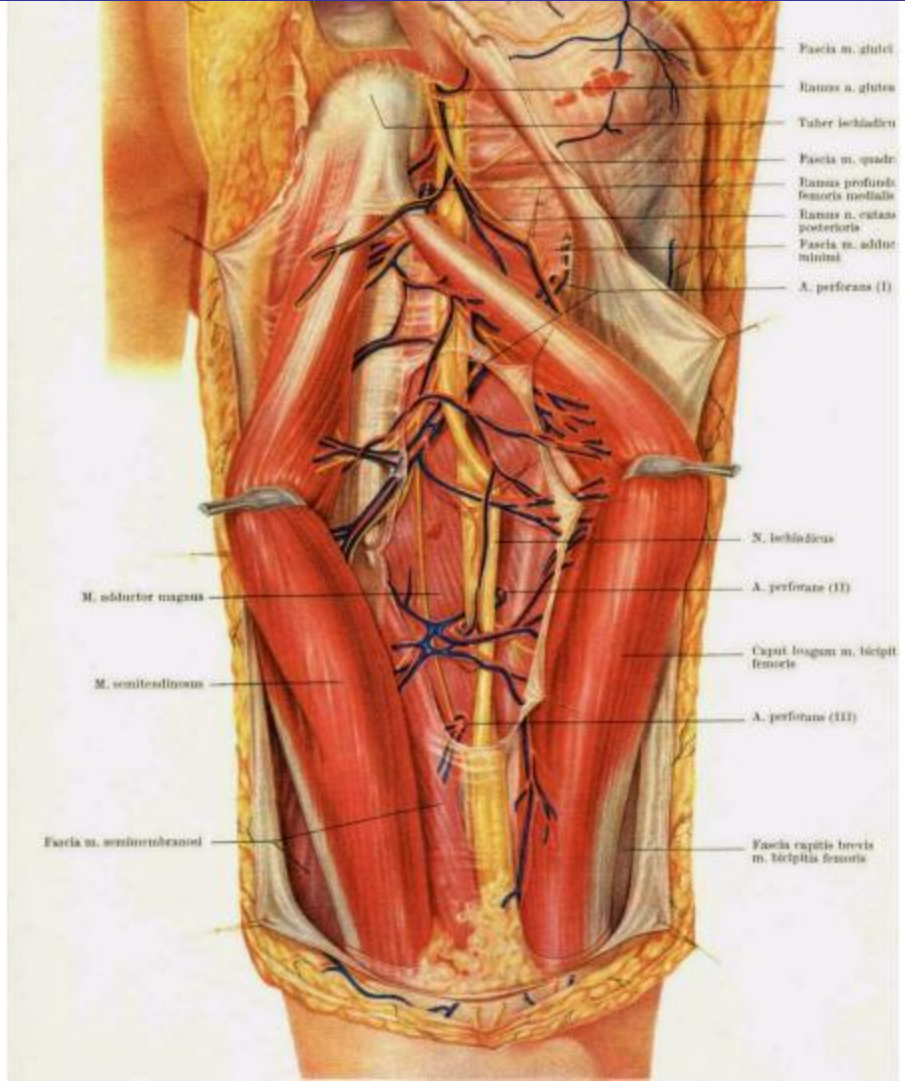












Fascia m. glutei

Ramus a. gluteus

Tuberculum ischiadicum

Fascia m. quadratus femoris profundus

Ramus n. cutaneus posterioris

Fascia m. adducto-minimi

A. perforans (I)

N. ischiadicus

A. perforans (II)

Caput longum m. bicipitis femoris

A. perforans (III)

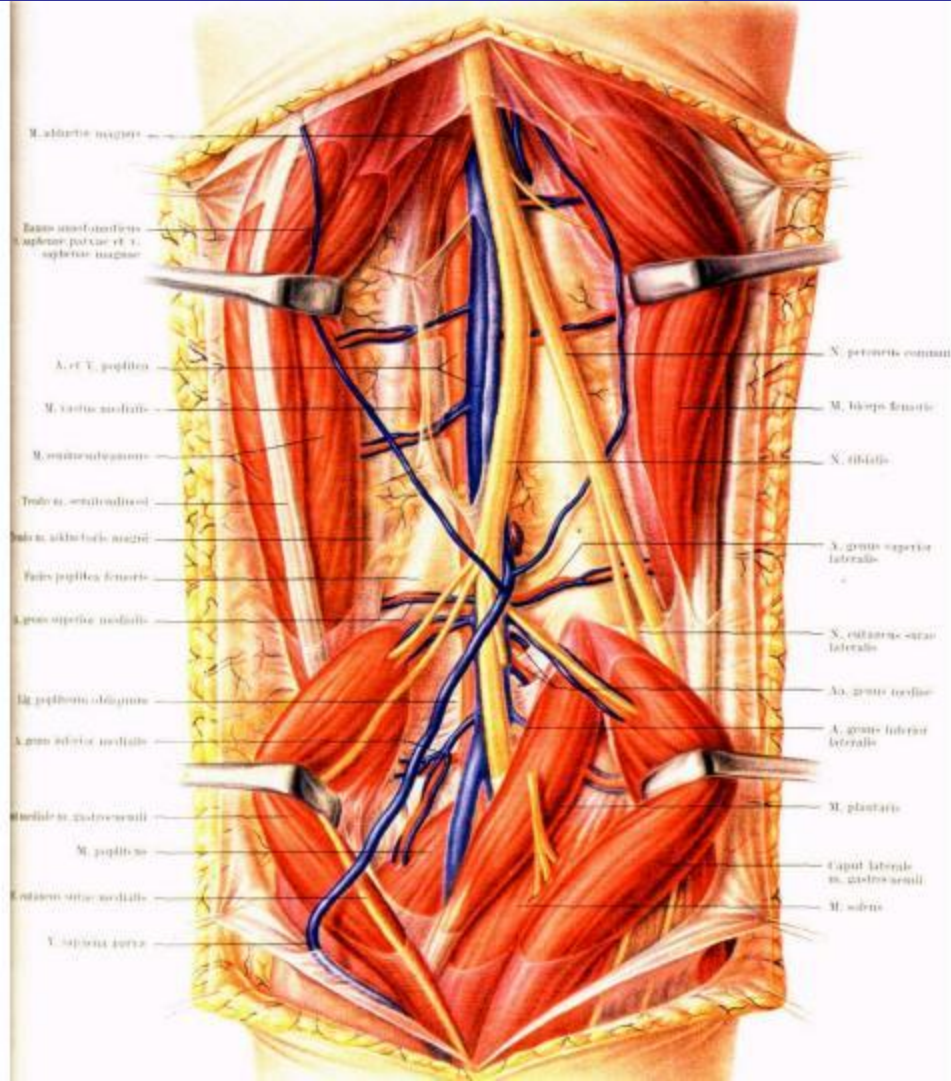
Fascia capitis brevis m. bicipitis femoris

M. abductor magnus

M. semitendinosus

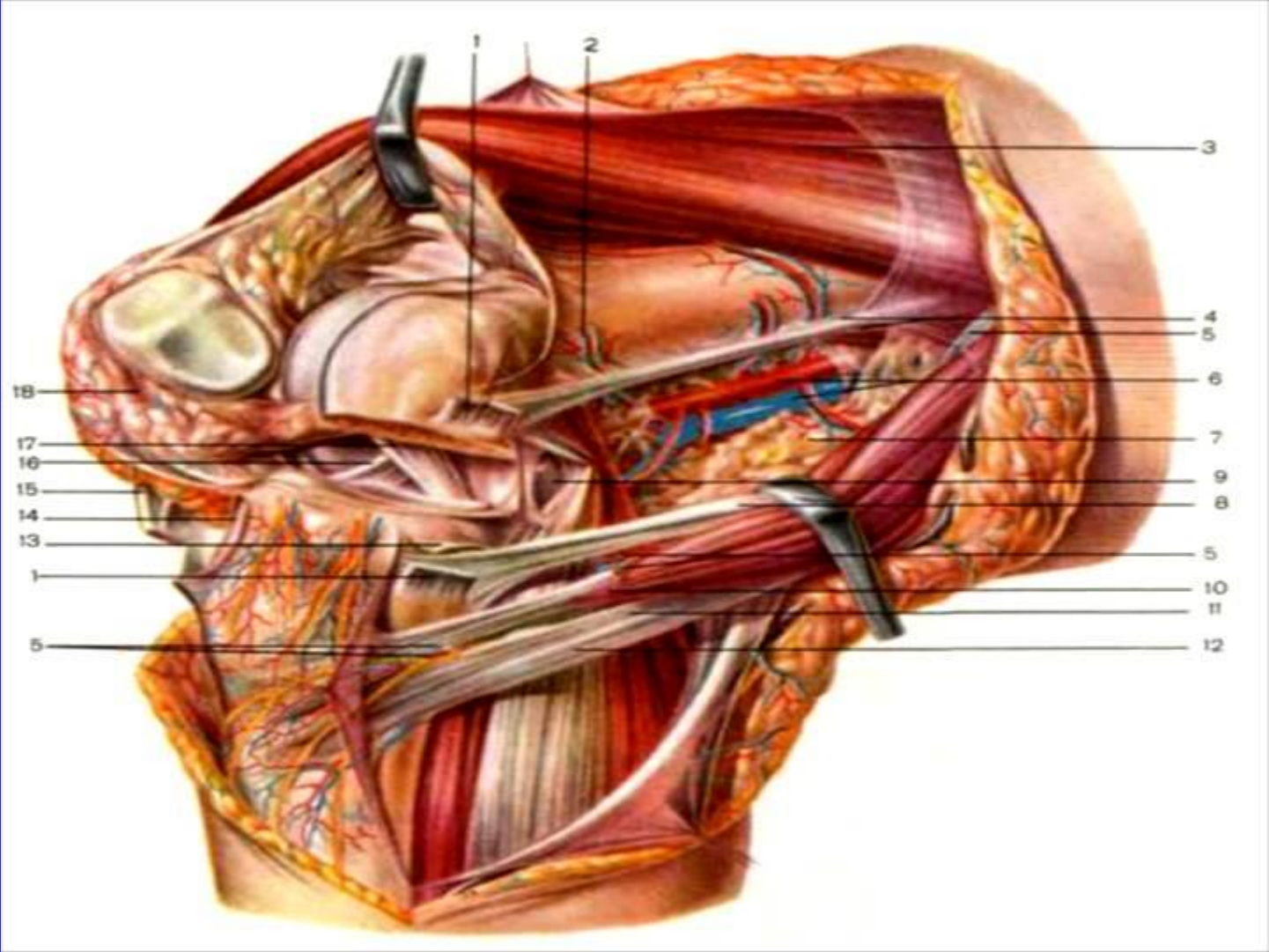
Fascia m. semitendinosi

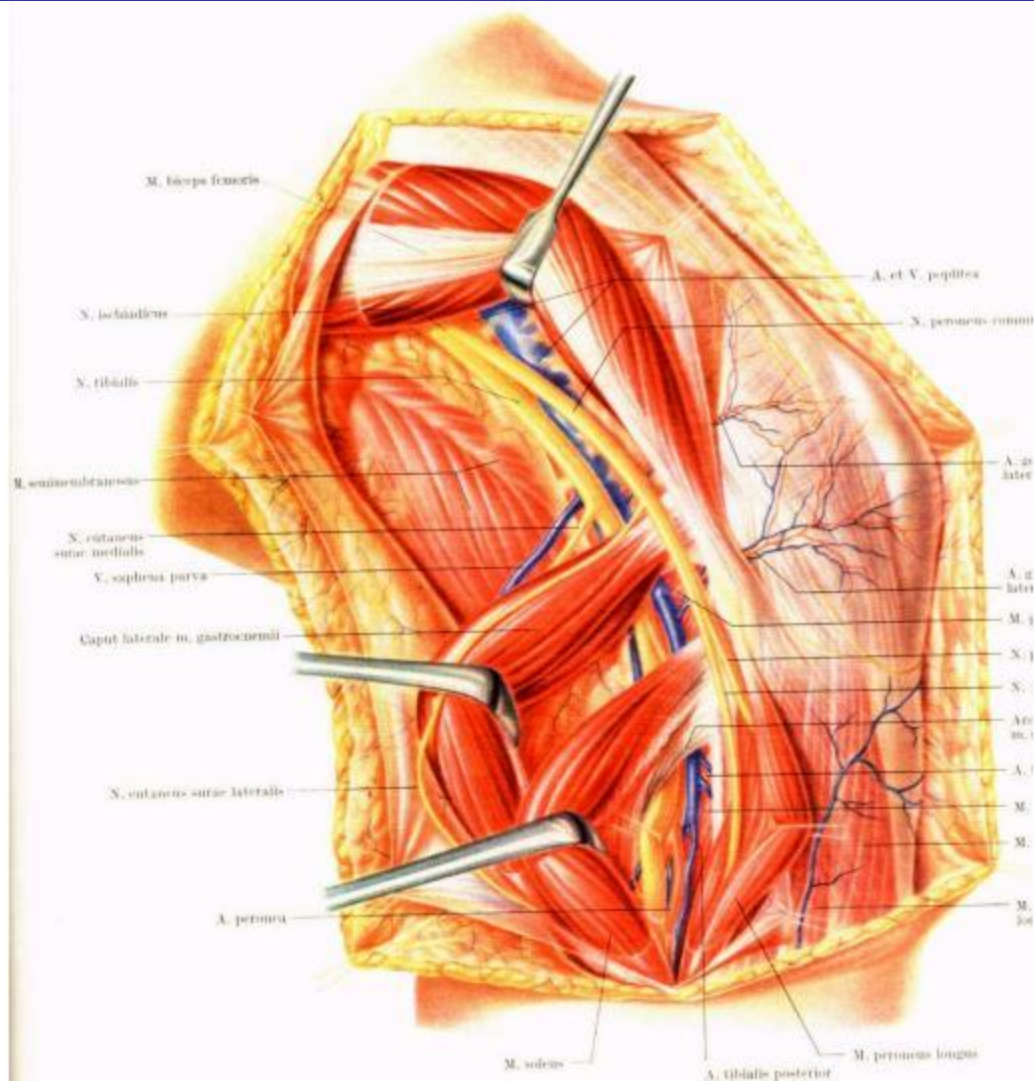


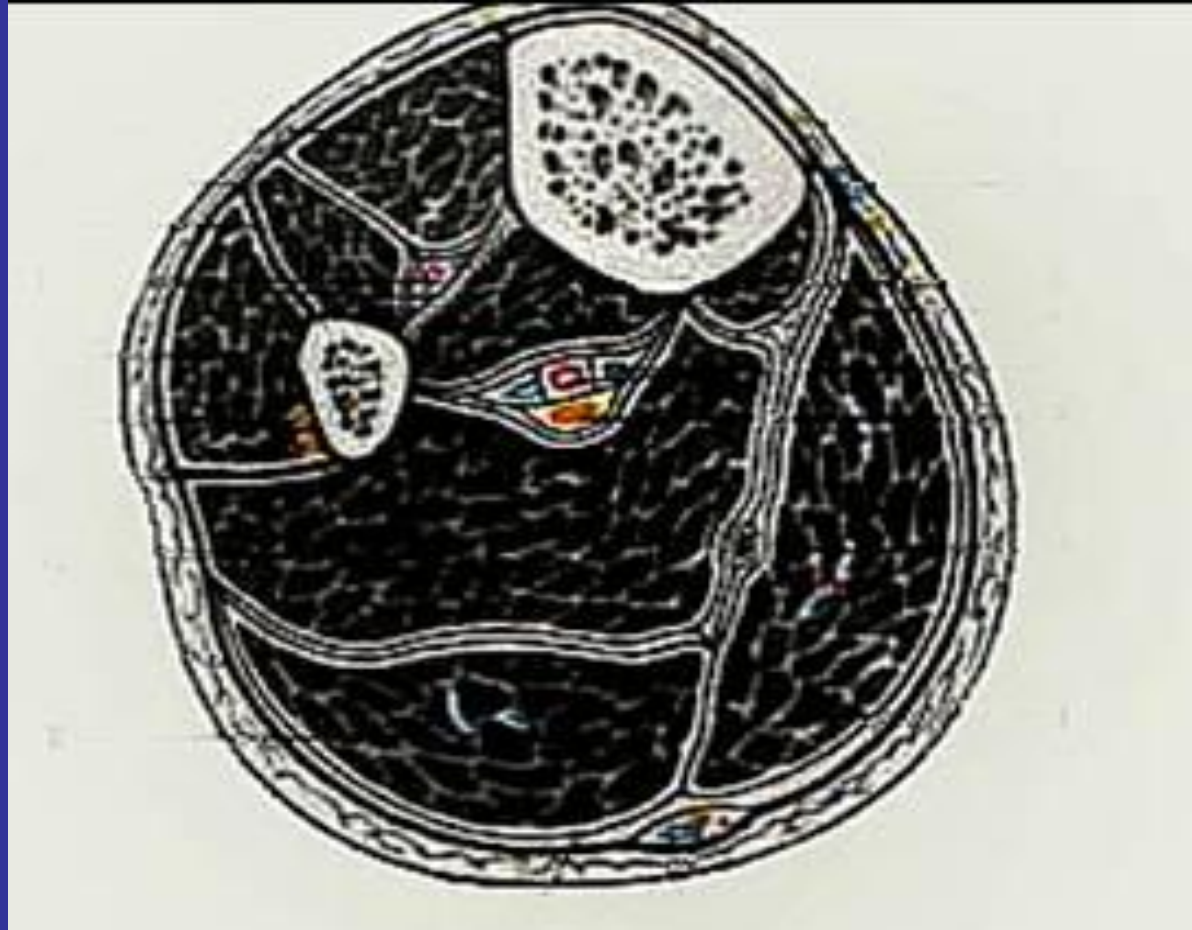


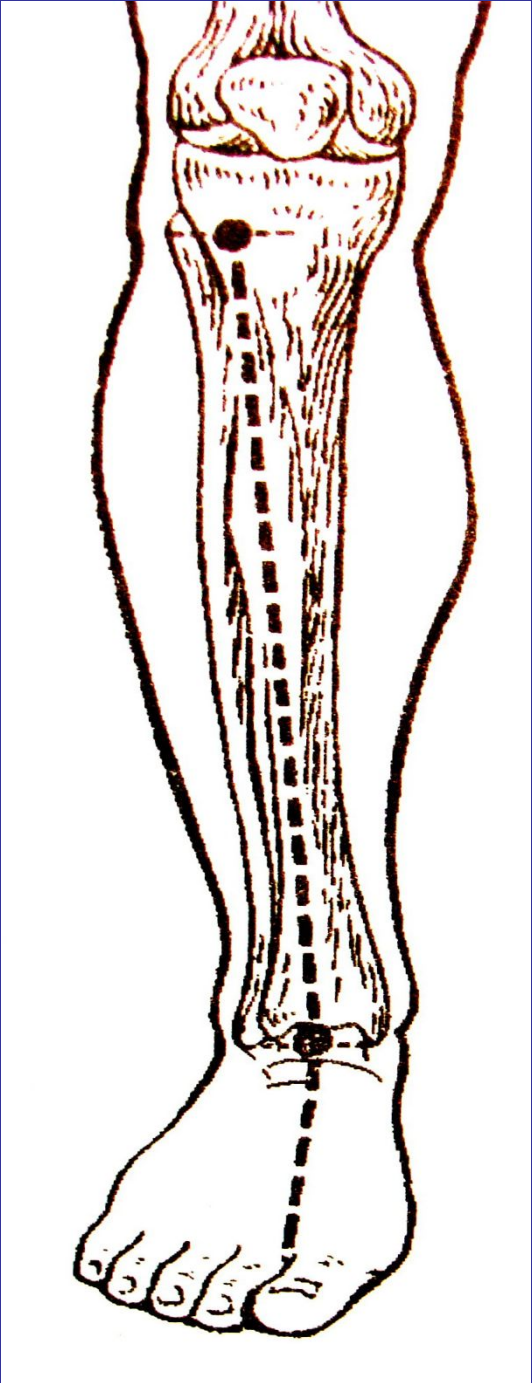
M. abductor hallucis  
 Tendo musculi flexoris pollicis et i.  
 supinator magis  
 A. et V. poplitei  
 M. vastus medialis  
 M. semitendinosus  
 Tendo semitendinosi  
 Tendo alio loco acrii  
 Pars poplitea femoris  
 A. pons superior medialis  
 D. poplitei obliquus  
 A. pons inferior medialis  
 Tendo m. gastrocnemii  
 M. popliteus  
 Tendo m. solei medialis  
 V. sapientia tertia

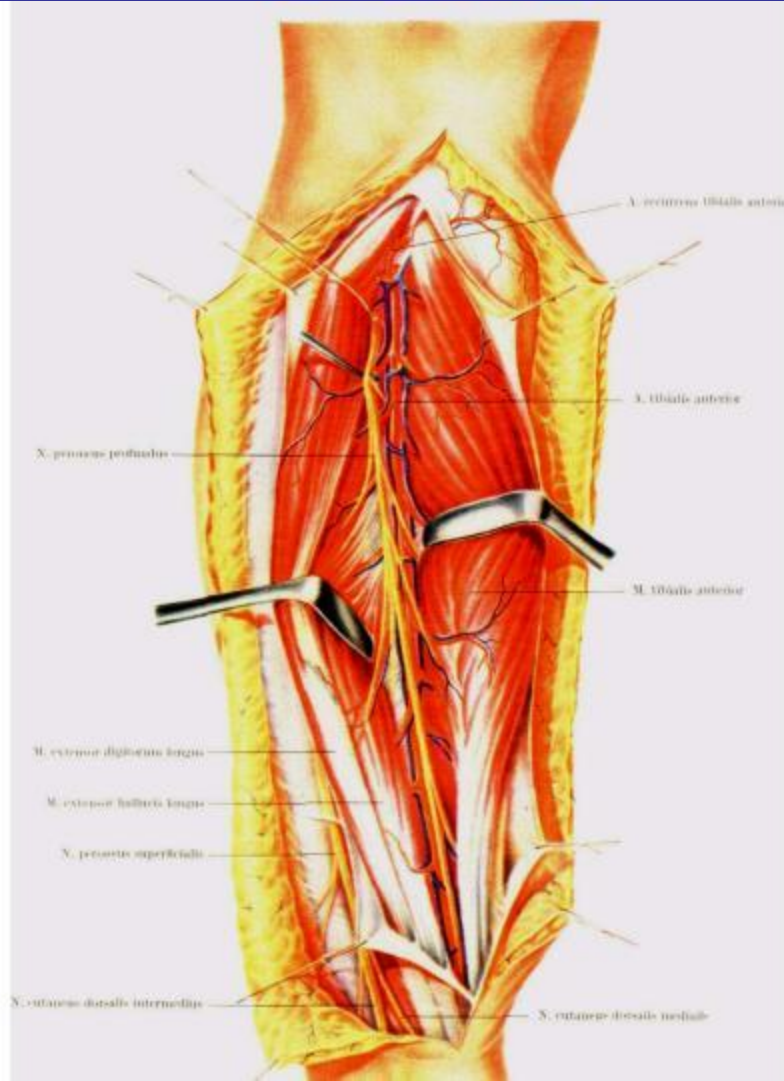
N. peroneus communis  
 M. biceps femoris  
 N. tibialis  
 N. pons superior lateralis  
 N. cutaneus surae lateralis  
 A. pons medialis  
 A. pons inferior lateralis  
 M. plantaris  
 Caput laterale m. gastrocnemii  
 M. soleus

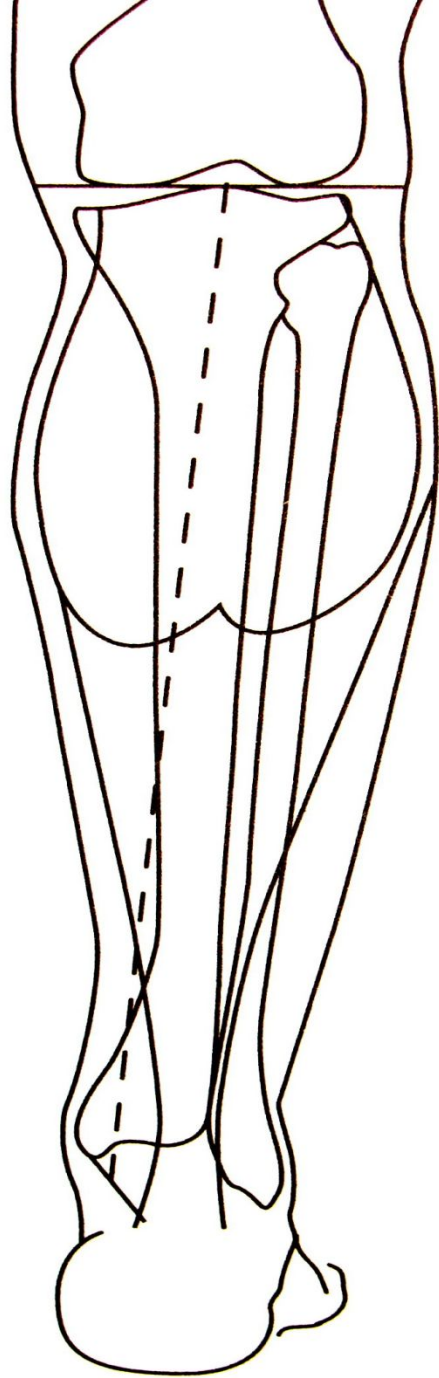


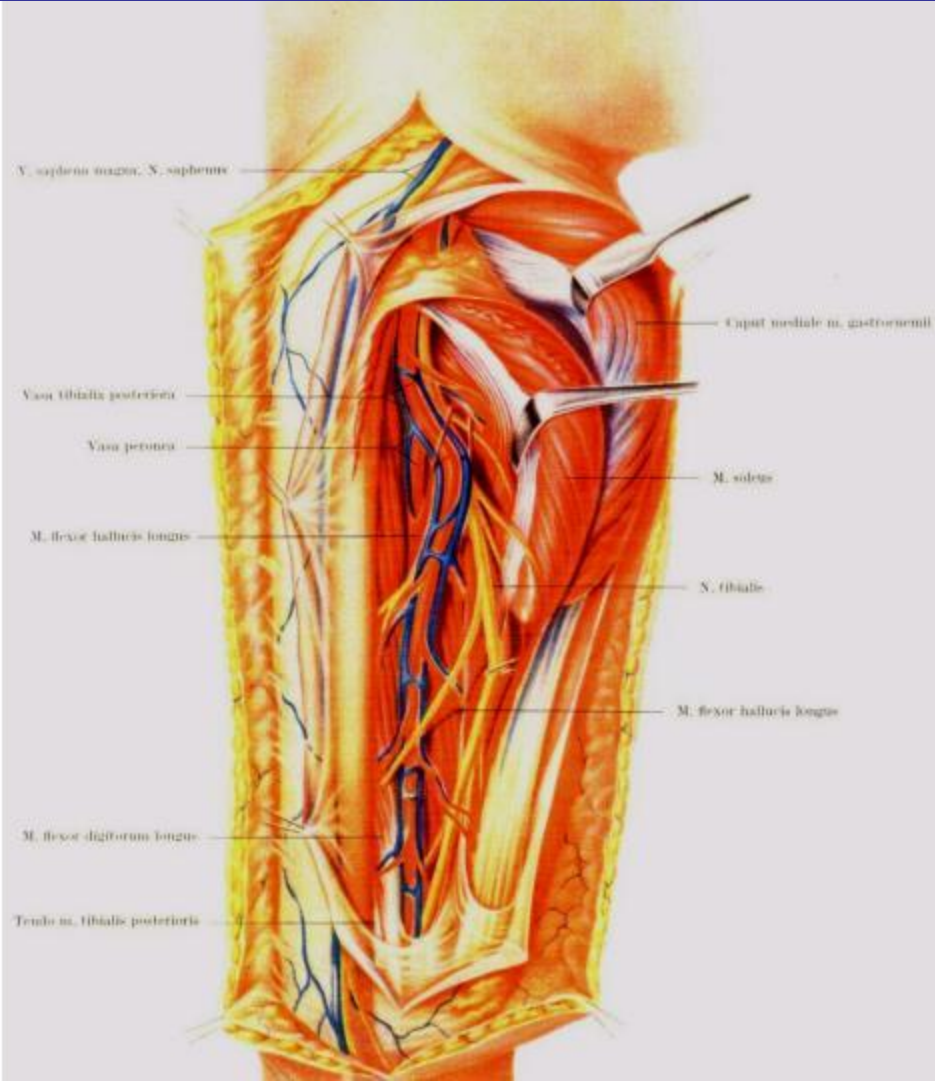




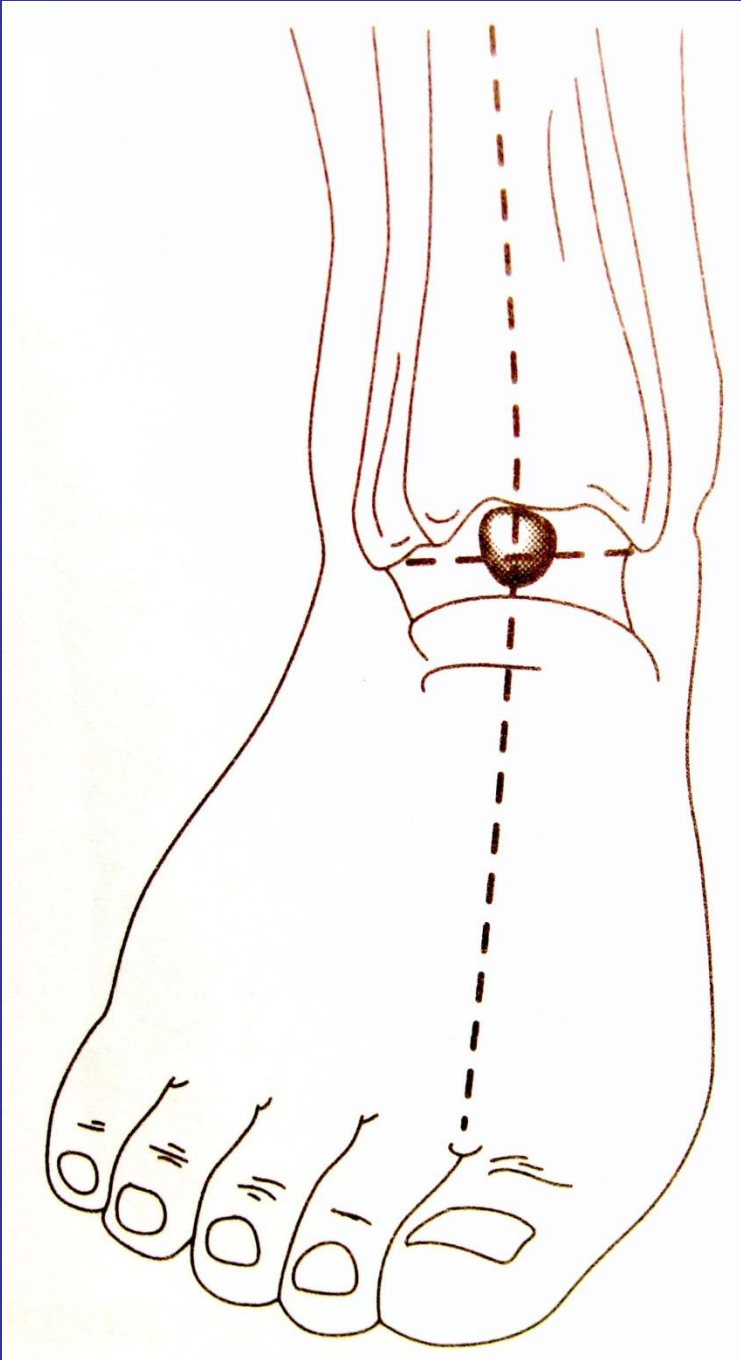


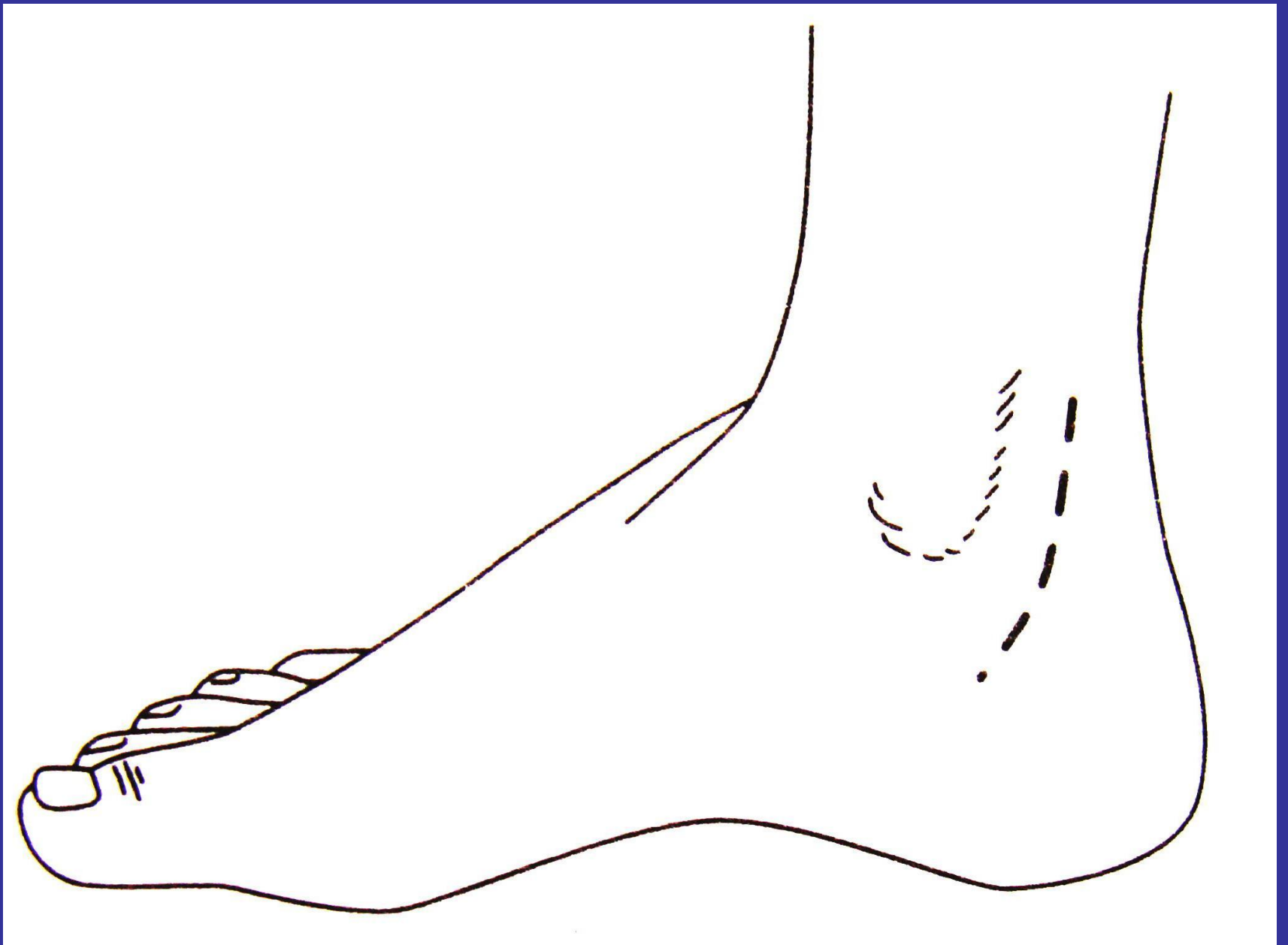


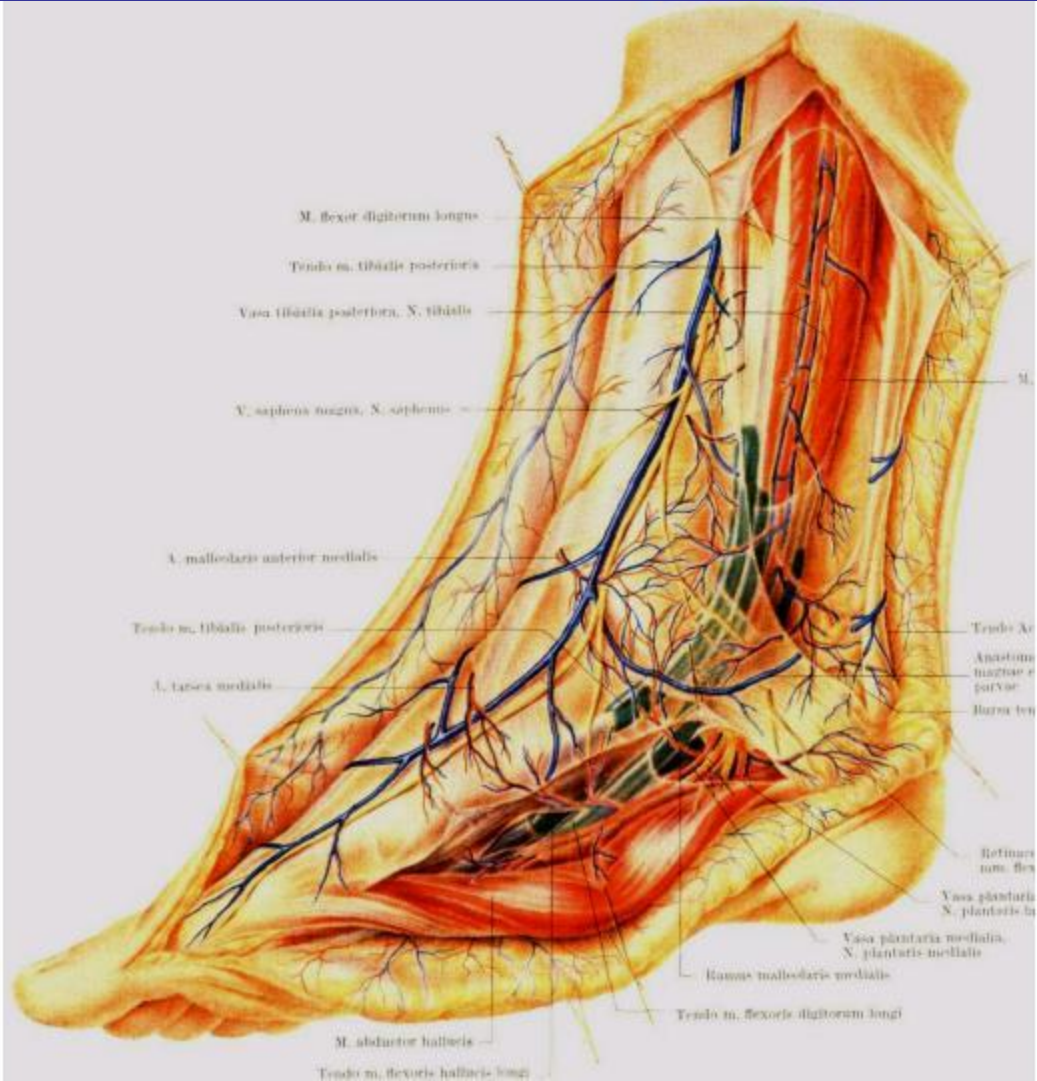












M. flexor digitorum longus

Tendo m. tibialis posterioris

Vasa tibialia posteriora, N. tibialis

V. saphena magna, N. saphenus

A. malleolaris anterior medialis

Tendo m. tibialis posterioris

A. tarsae medialis

M. abductor hallucis

Tendo m. flexoris hallucis longi

Tendo Ar.

Anotom. incisioe r. parvae

Bursa ten.

Retinaculum flex. m. flex.

Vasa plantaria, N. plantaris lateralis

Vasa plantaria medialis, N. plantaris medialis

Ramus malleolaris medialis

Tendo m. flexoris digitorum longi



3008-11  
1 TI-CROWN®  
14 Metric Titanium Coated Polyester Suture  
C-42  
DOR  
DOR Surgical Systems Co. Walling, CT 06495