



Is he/she ... in the ...?

Yes, he/she is.

No, he/she isn't

2nd grade

A B C D E F G H I



she



he





living room



garden



bathroom



bedroom



kitchen



house



Is Grandpa in the garden?

Yes, he is.





Is Daddy in the garden?

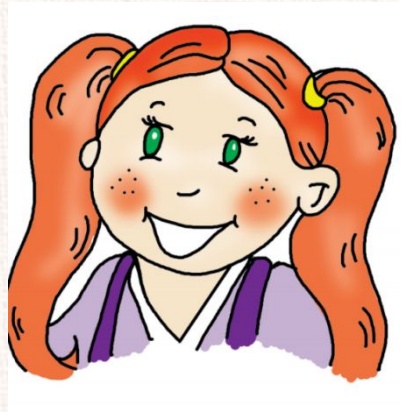
No, he isn't.





Is Lulu in the
bathroom?

Yes, she





Is Larry in the garden?





Is Grandma in the garden?



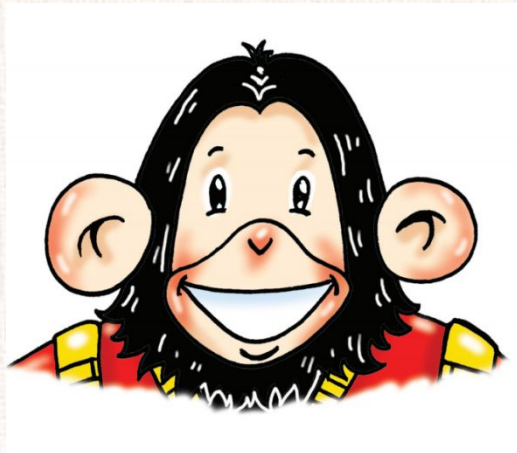


Is Larry in the bedroom?





Is Chuckles in the garden?





Is Grandpa in the
bathroom?



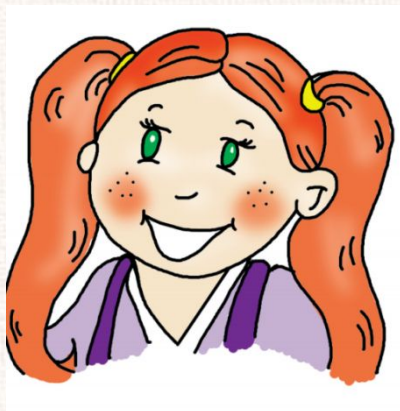


**Is Chuckles in the
bathroom?**





Is Lulu in the garden?



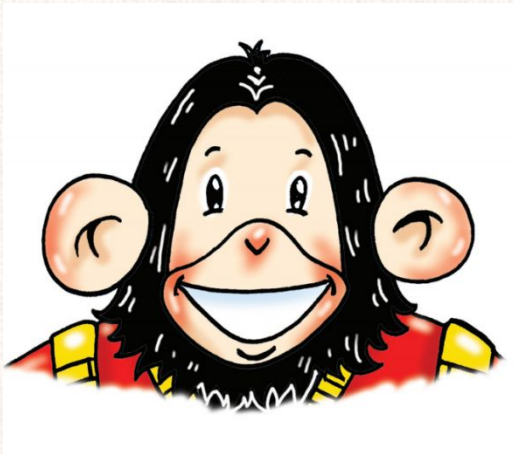


Is Nanny in the kitchen?



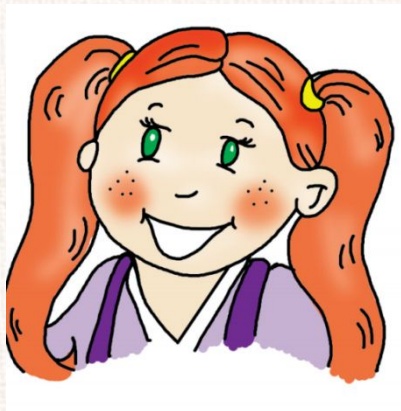


Is Chuckles in the house?





Is Lulu in the garden?





Is Chuckles in the bedroom?





Is Mummy in the kitchen?





Is Chuckles in the garden?





Well done!