

ENGLISH PROVERBS

2

**FIND THE PROVERBS
WHICH MEAN THE SAME
AS THE GIVEN SENTENCES.**

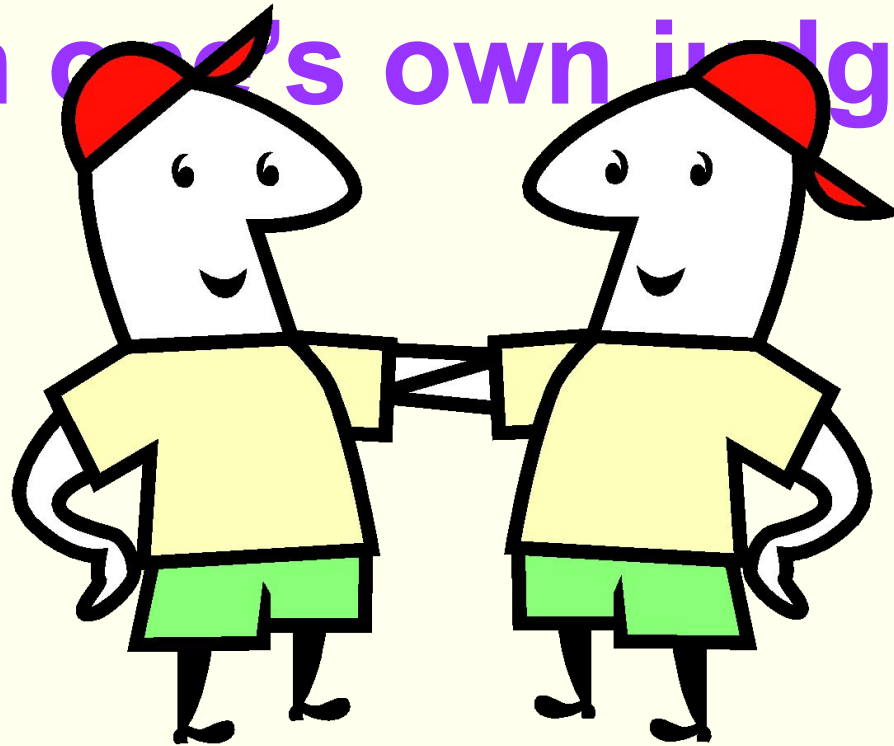
EXAMPLE:



**WHEN A PERSON REALLY WANTS TO DO
SOMETHING, HE WILL FIND A WAY OF DOING
IT.
=**

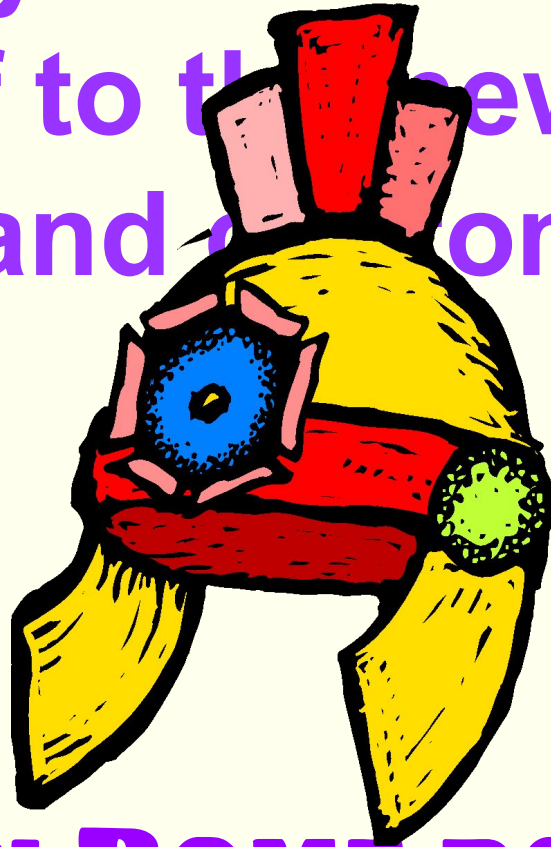
<< WHERE THERE'S A WILL THERE'S A WAY >>

It's always better to get the view of someone else than to rely on one's own judgement.



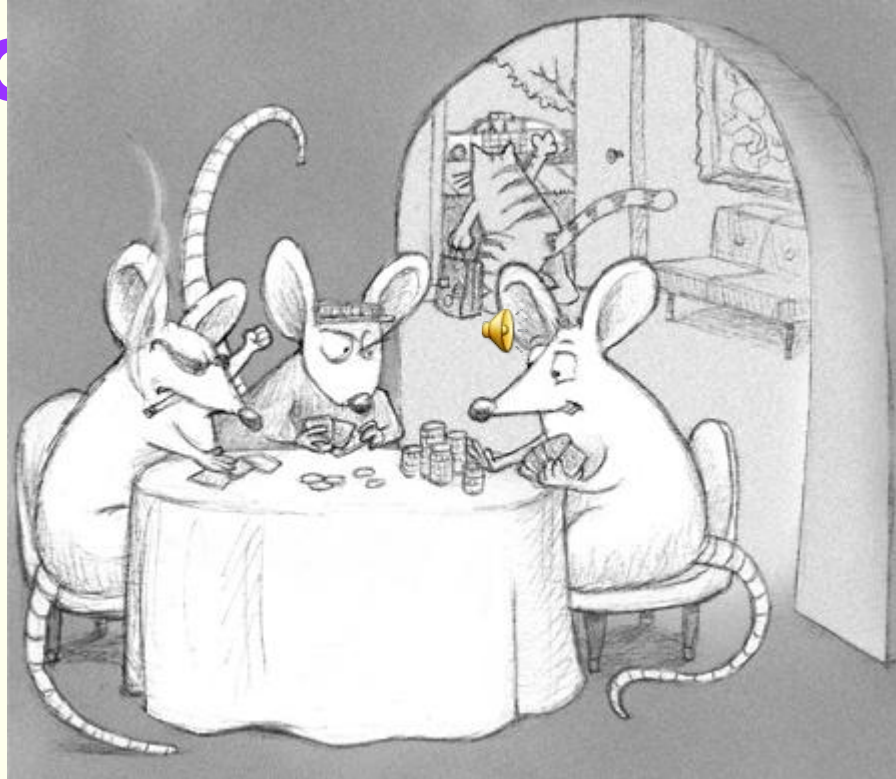
**TWO HEADS ARE BETTER
THAN ONE.**

When you are in a new place,
country or situation adapt
yourself to the new manners
and customs.



**WHEN IN ROME DO AS THE
ROMANS DO.**

When law enforcers are absent, certain people take the opportunity to break the



WHEN THE CAT'S AWAY THE MICE WILL PLAY.

We usually desire someone
more when he



y.

**ABSENCE MAKES THE HEART
GROW FONDER.**

Someone new on the staff is
always eager and enthusiastic
in his work.



A NEW BROOM SWEEPS CLEAN.

**Don't be deceived by
appearance.**



**DON'T JUDGE A BOOK BY ITS
COVER.**

**Family ties are stronger than
any other.**



**BLOOD IS THICKER THAN
WATER.**

**Do not make plans based on
something that
has not happened yet.**



**DON'T COUNT YOUR CHICKENS
BEFORE THEY ARE HATCHED.**

Do not make a big fuss over something



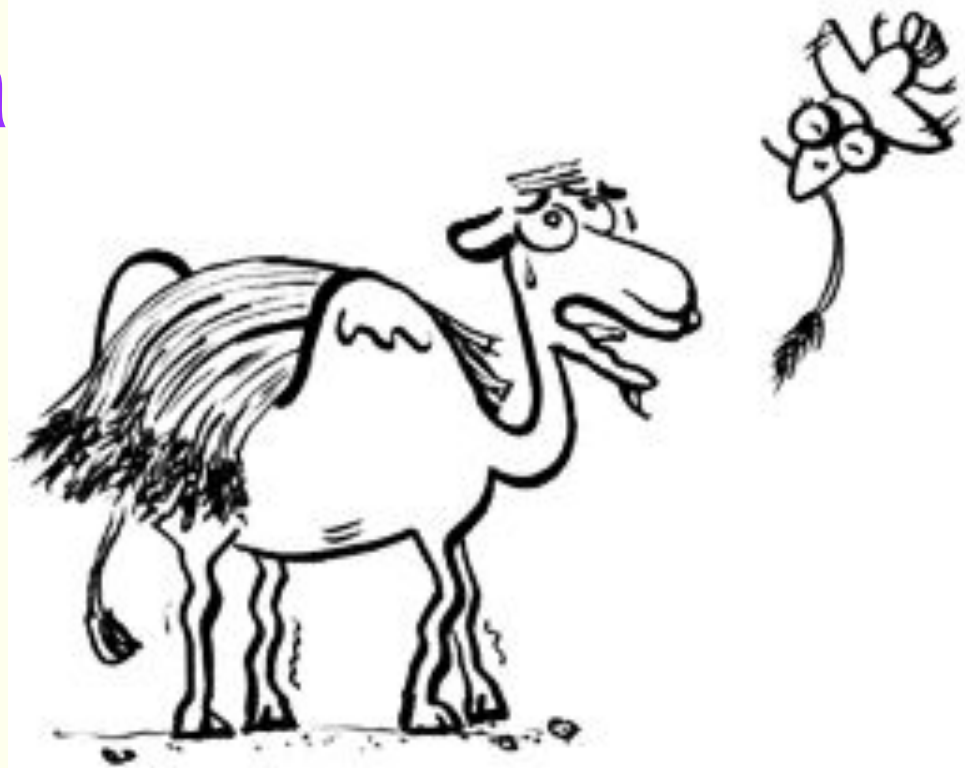
DON'T MAKE A MOUNTAIN OUT OF A MOLEHILL.

The best way to learn a job is



**EXPERIENCE IS THE BEST
TEACHER.**

One final thing added to a bad
or unpleasant situation
can be the last straw that
breaks the camel's back.



**THE LAST STRAW (THAT BROKE
THE CAMEL'S BACK).**

Be optimistic!



LOOK ON THE BRIGHT SIDE.

Seize opportunities.



**MAKE HAY WHILE THE SUN
SHINES.**

People soon forget friends if
they do not
meet or keep in contact with
them.



OUT OF SIGHT, OUT OF MIND.

A person's nature cannot



**A LEOPARD CANNOT CHANGE
ITS SPOTS.**

You cannot have too many
people doing

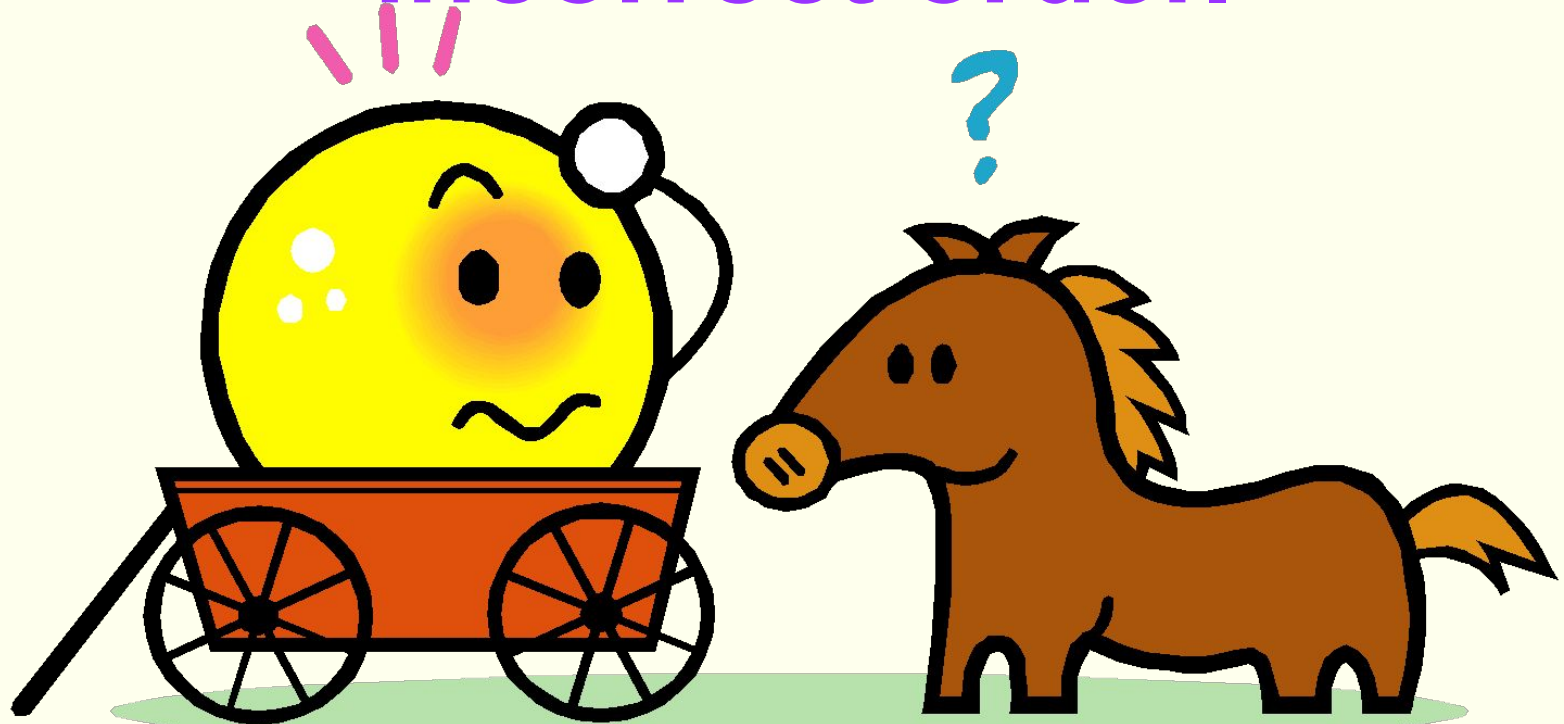
the same

same



**TOO MANY COOKS SPOIL
THE BROTH.**

To do something in an
incorrect order.



**TO PUT THE CART BEFORE
THE HORSE.**

To try to do something which
you

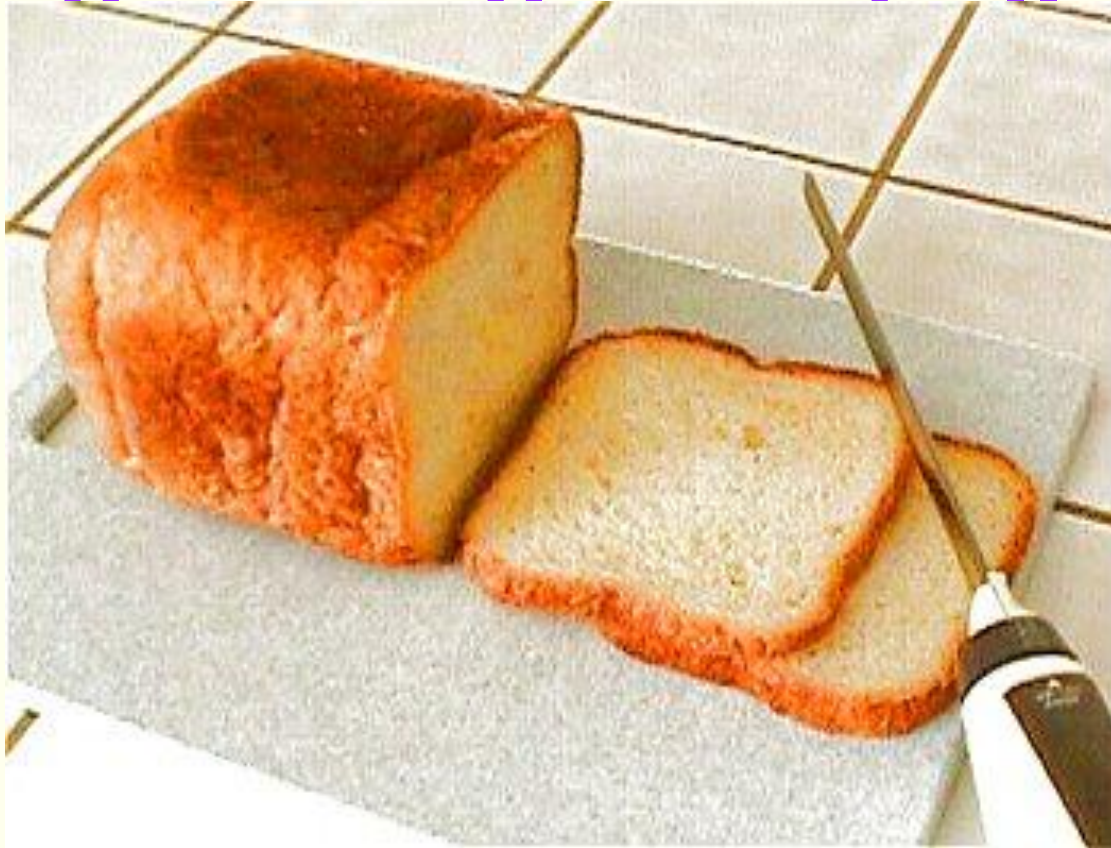
are

A photograph of two small Yorkshire Terrier puppies sitting on a green surface. In front of them lies a large, white, cartoonish bone that is significantly larger than either of the puppies. The puppies are looking at the bone with interest. The background is a soft, out-of-focus green and blue gradient.

ng.

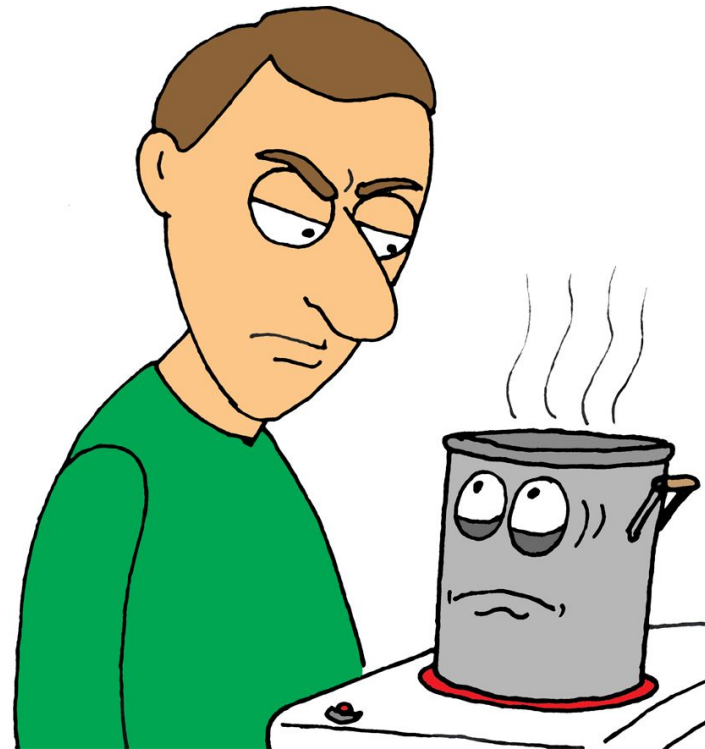
**BITE OFF MORE THAN ONE
CAN CHEW.**

It's better to receive a little



**HALF A LOAF IS BETTER
THAN NONE.**

If you watch and wait for
something to
happen, it will take



**A WATCHED POT NEVER
BOILS.**

To go from one bad situation



**JUMP FROM THE FRYING PAN
INTO THE FIRE.**

You must choose between two things as you cannot have both



YOU CAN'T HAVE YOUR CAKE AND EAT IT.

If you are in need you should
be grateful for whatever is



**BEGGARS CAN'T BE
CHOOSERS.**