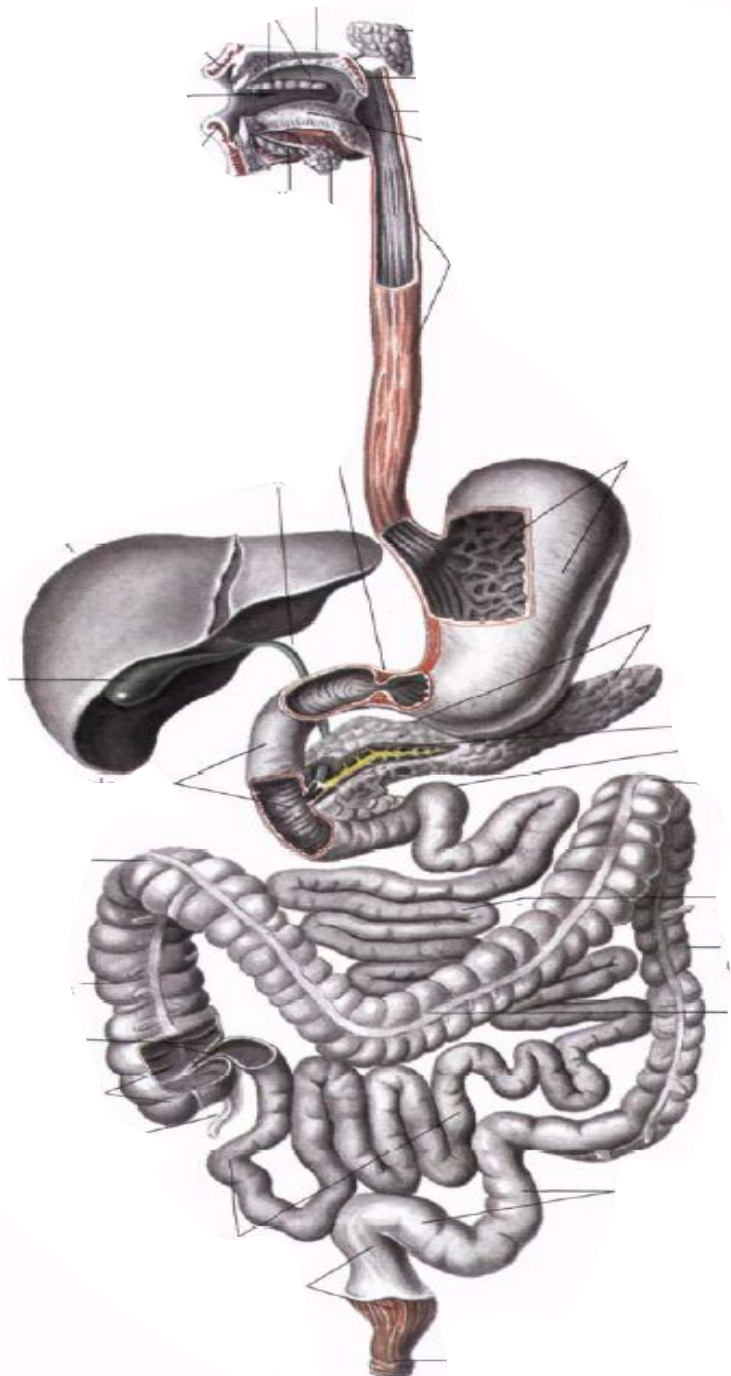
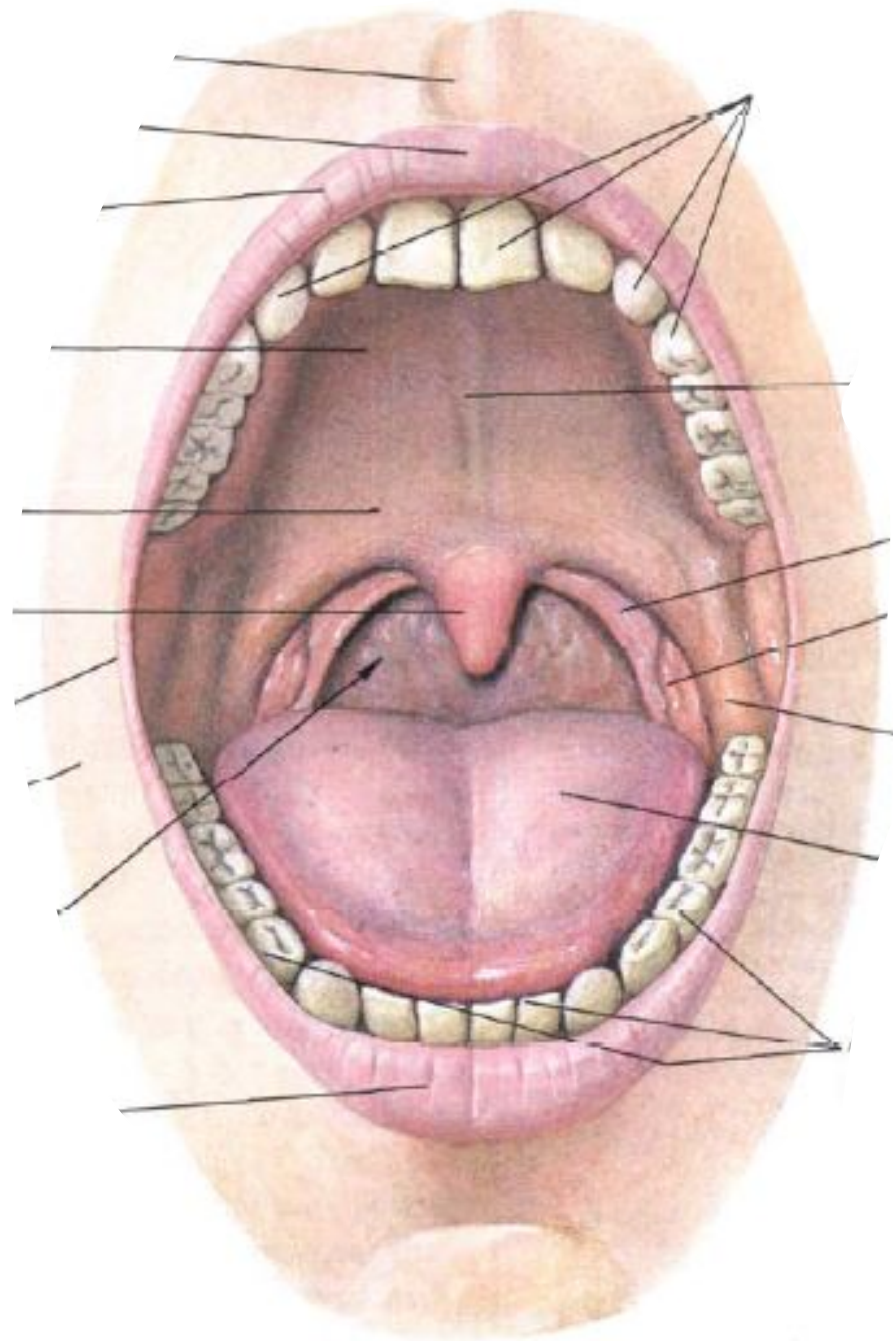


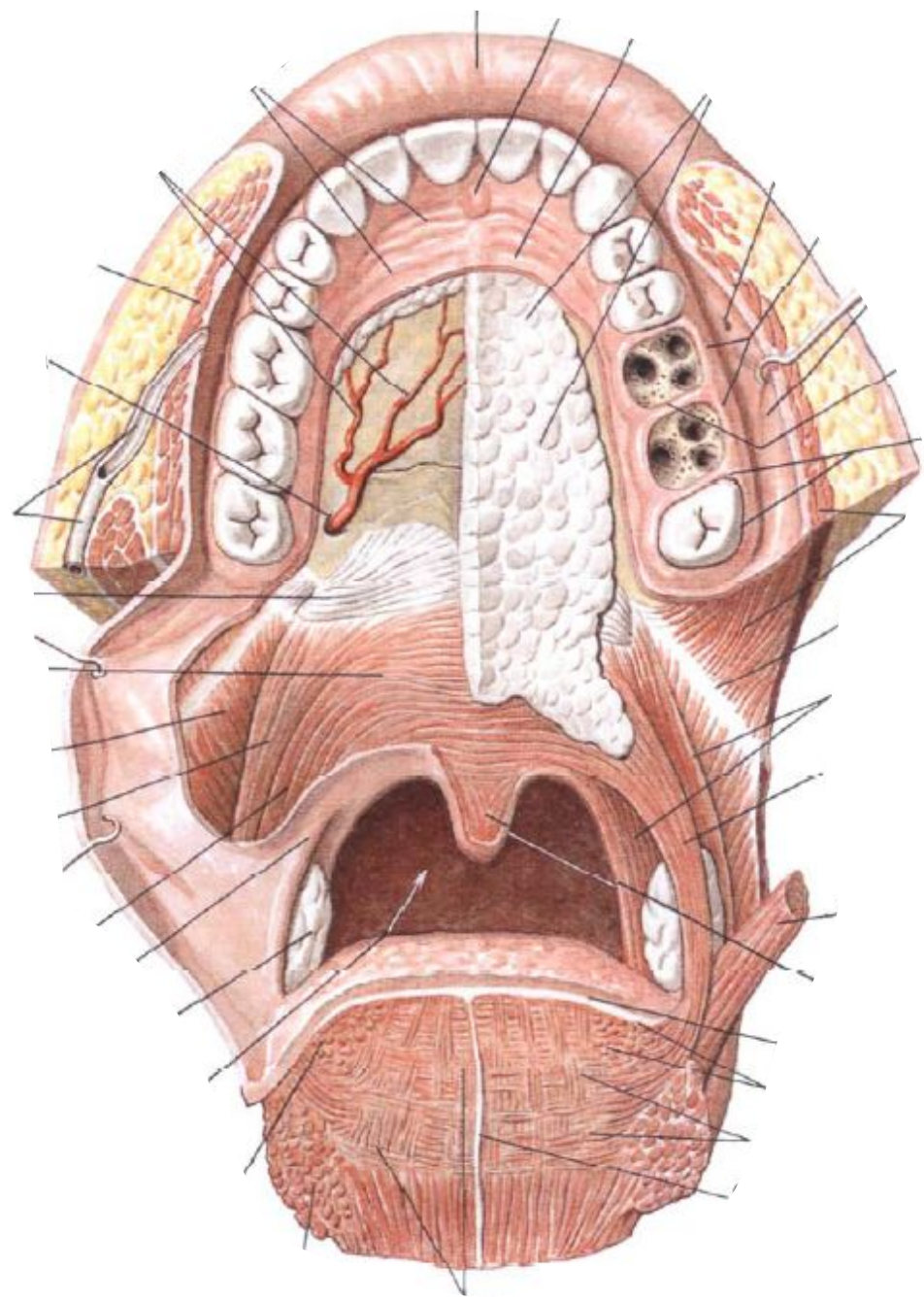
# Пищеварительная система

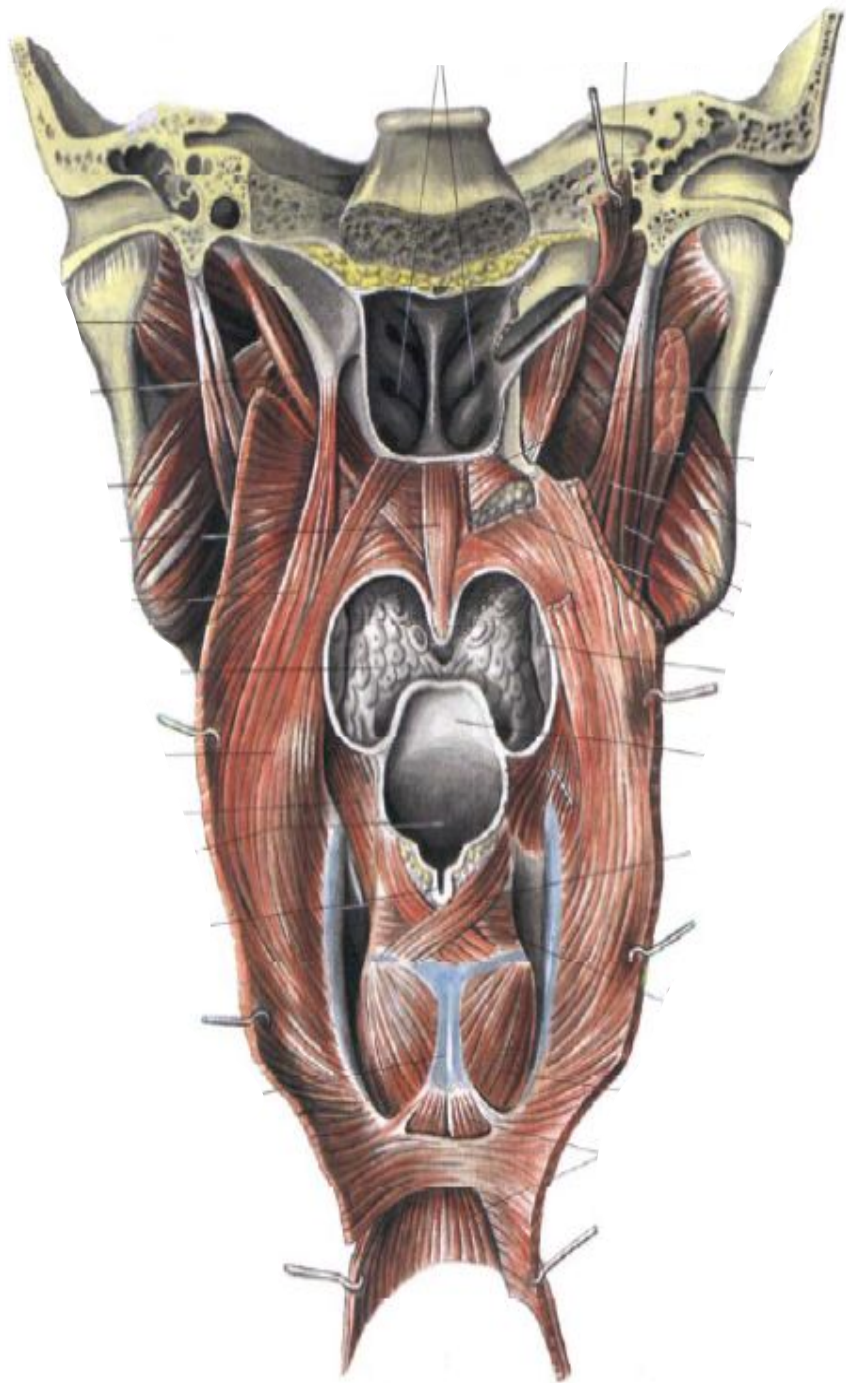
# Занятие №1

Анатомия органов пищеварения: ротовая полость. Губы, щеки, твердое и мягкое небо, зев, язык.

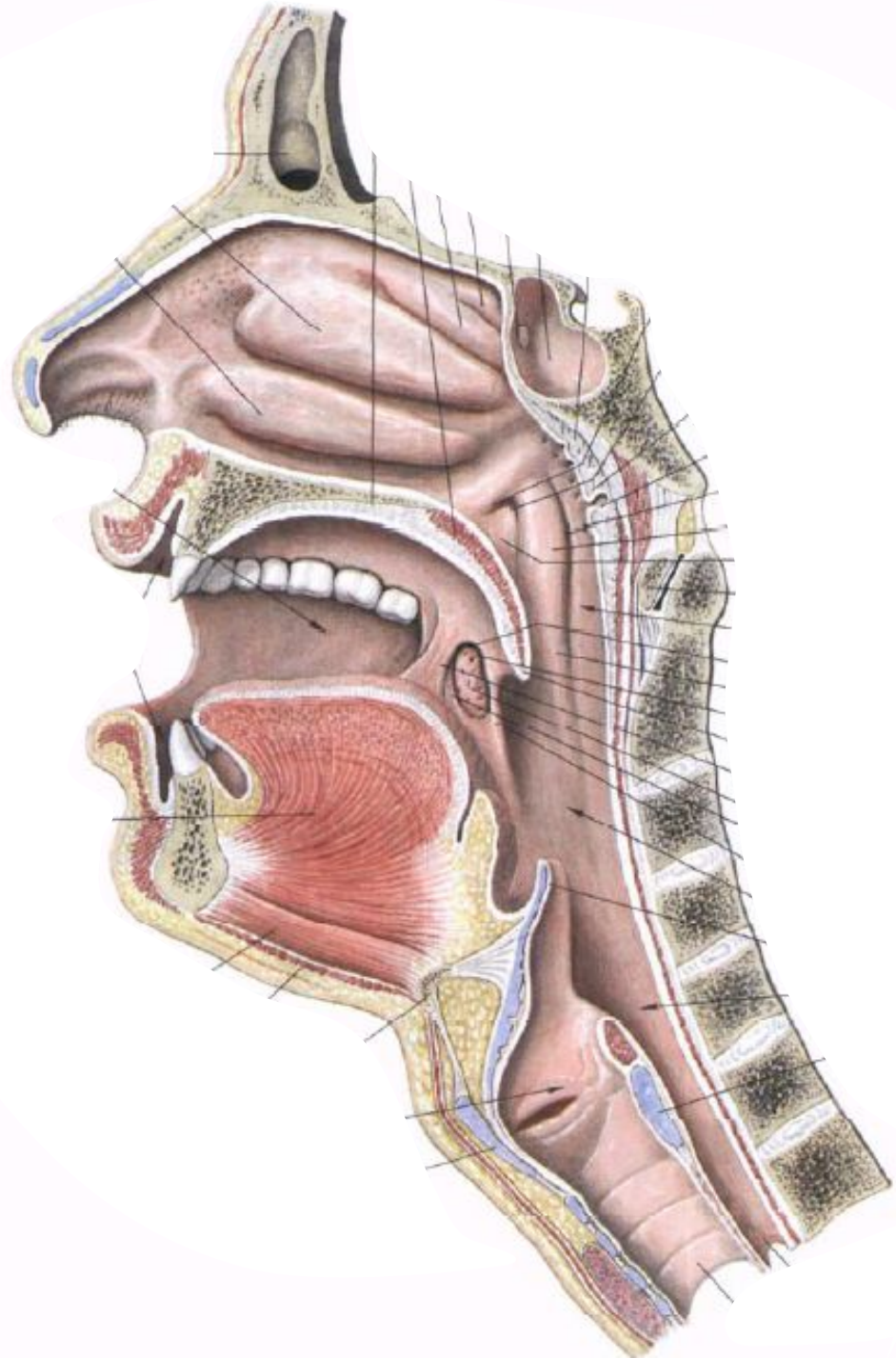


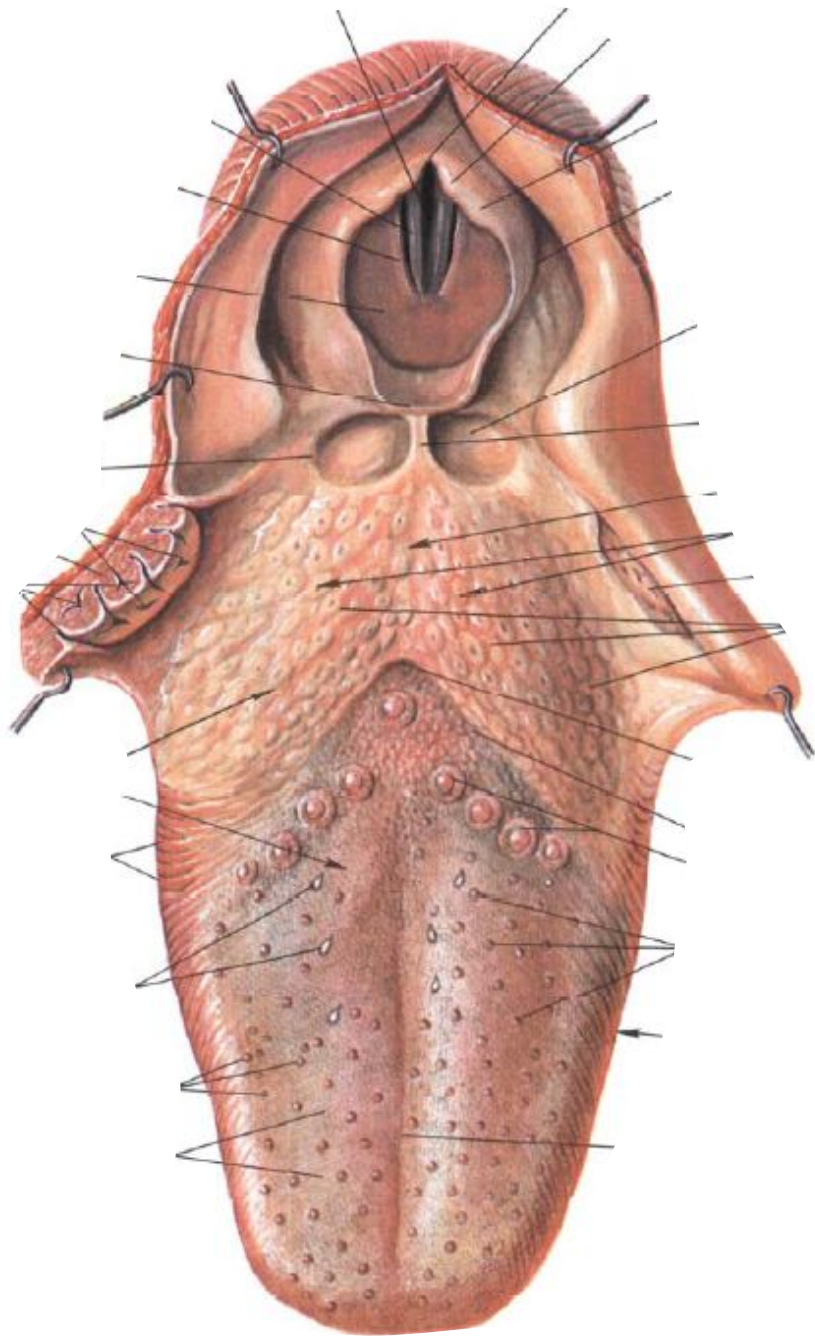




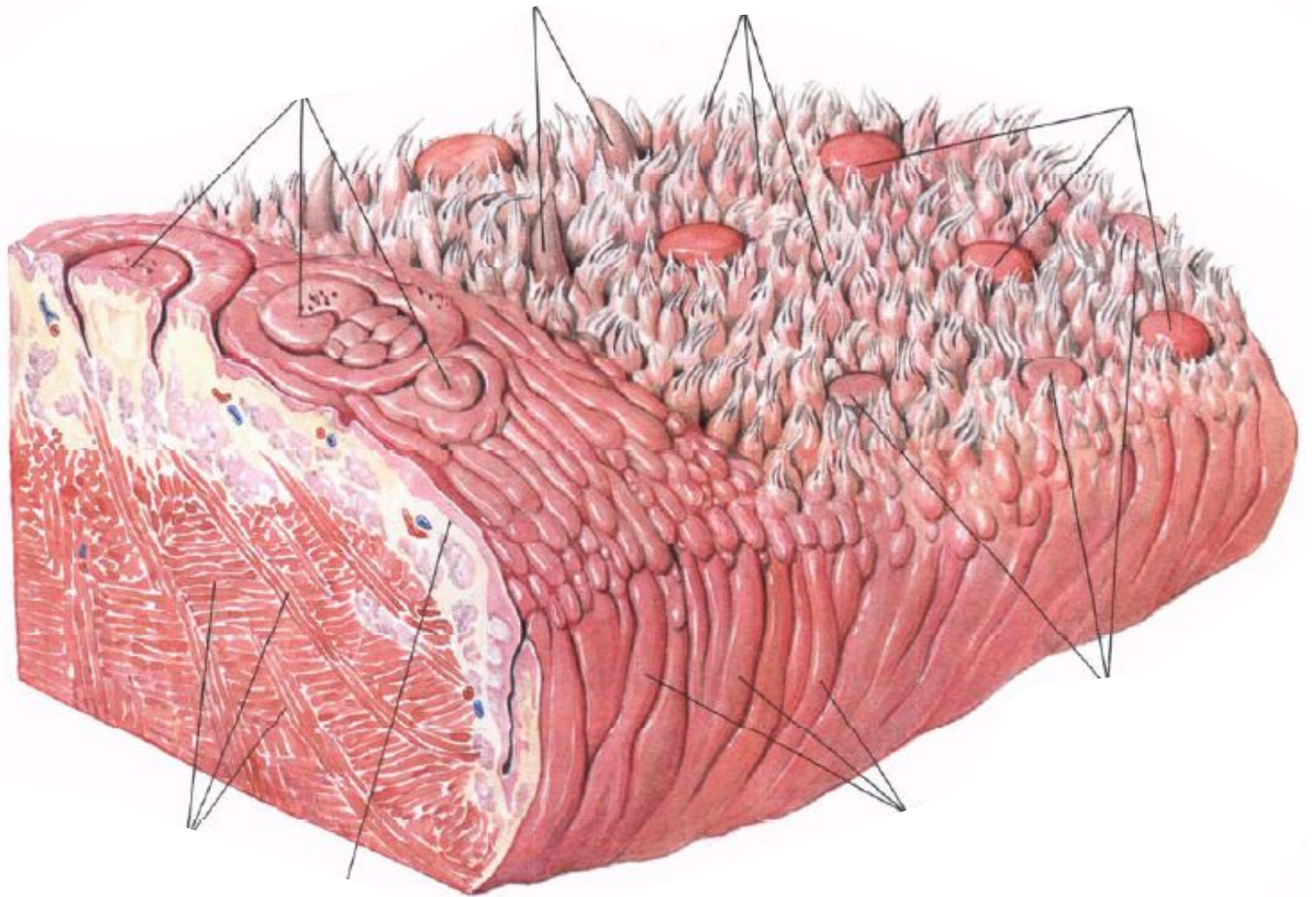


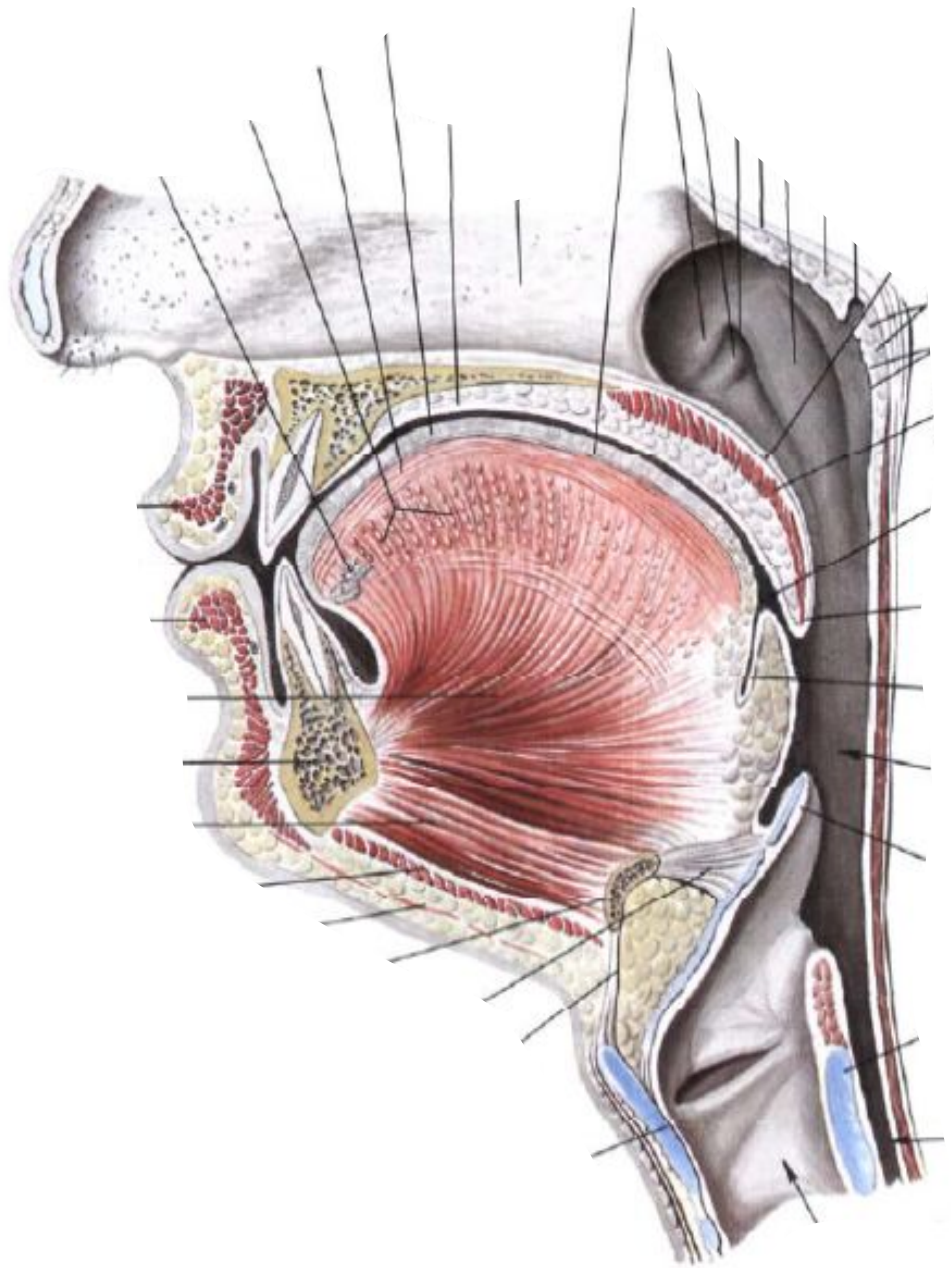






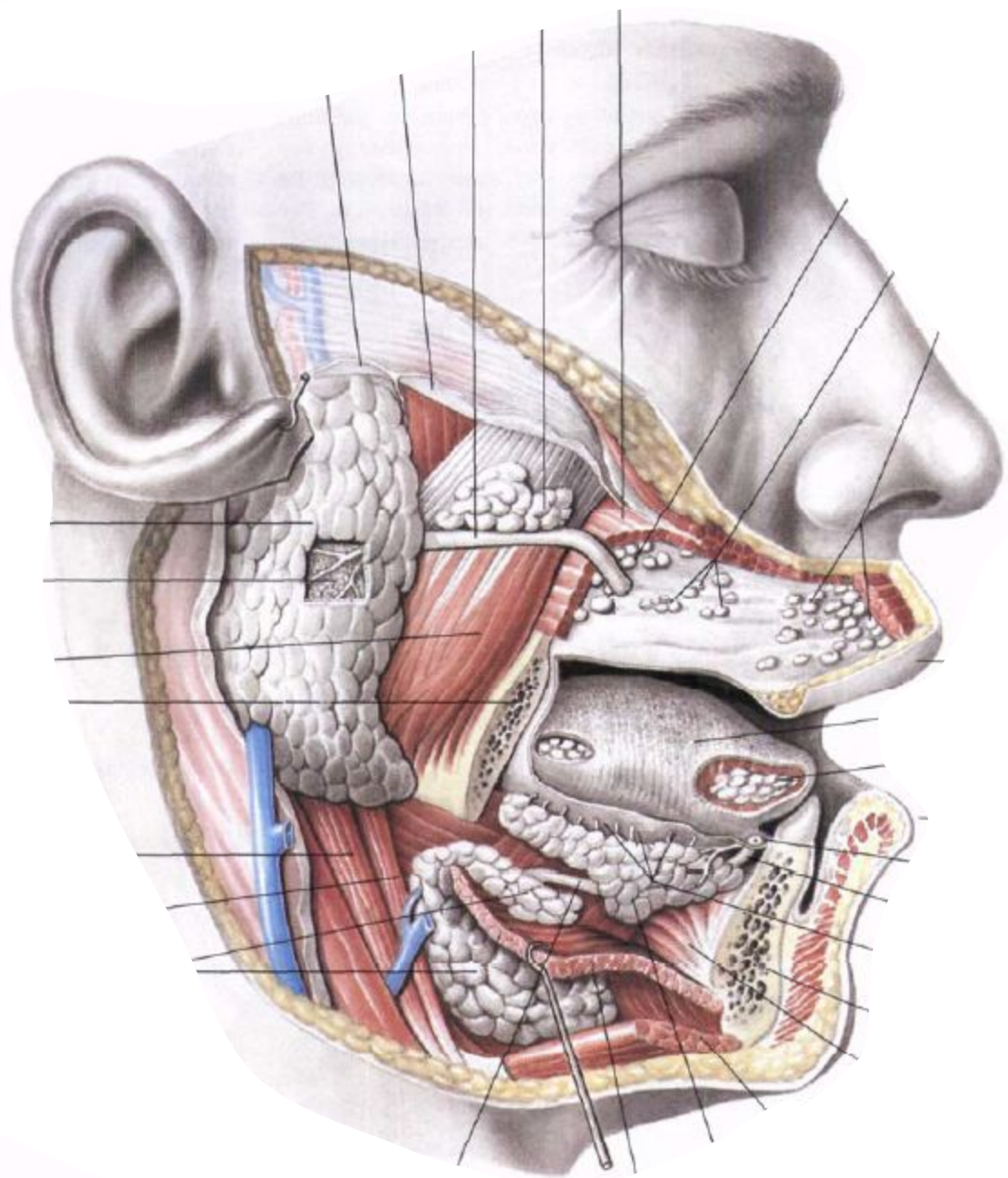




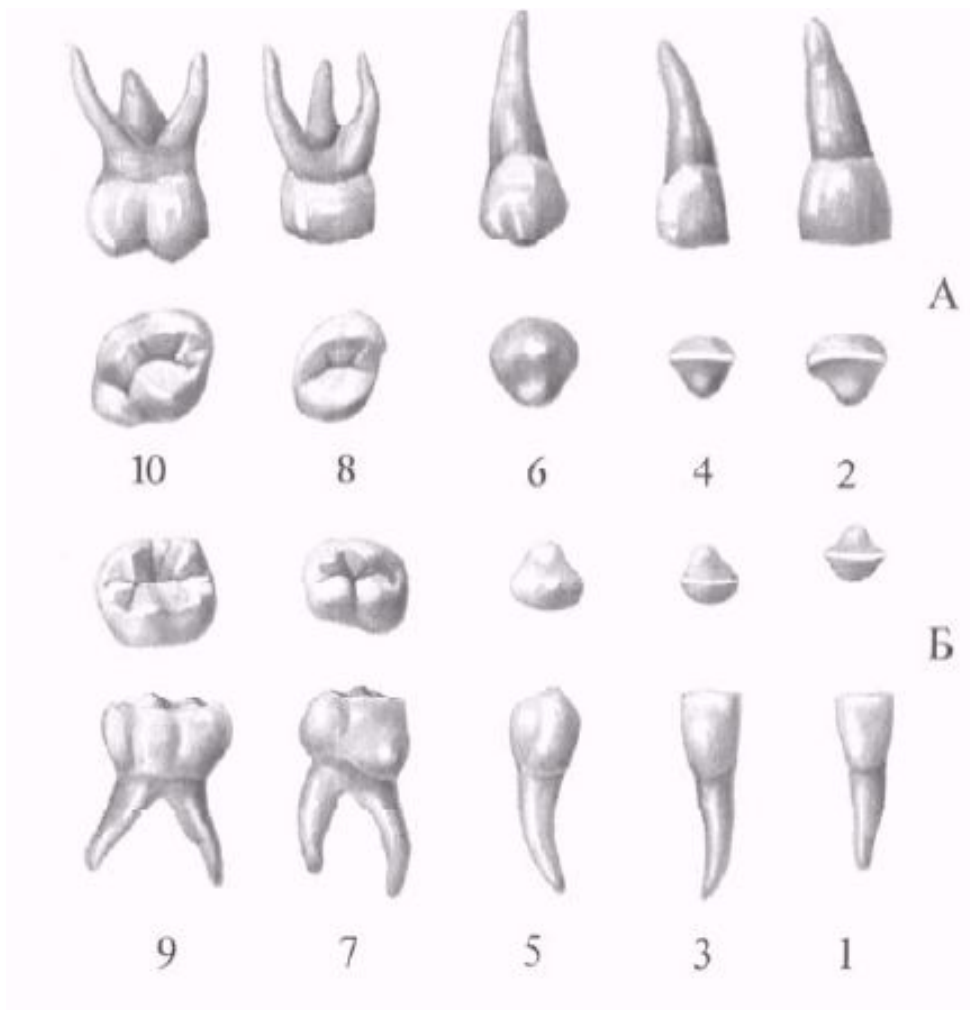
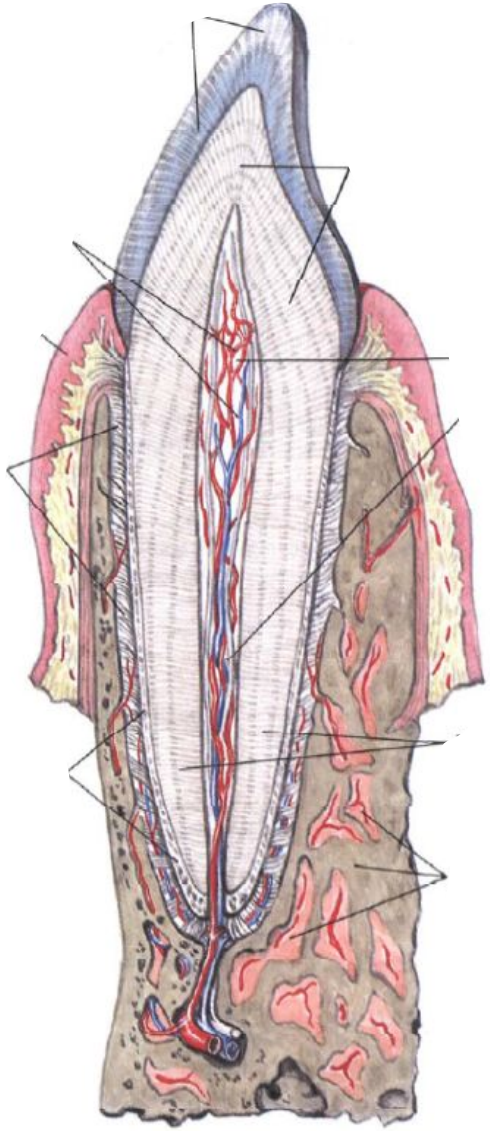


# Занятие №2

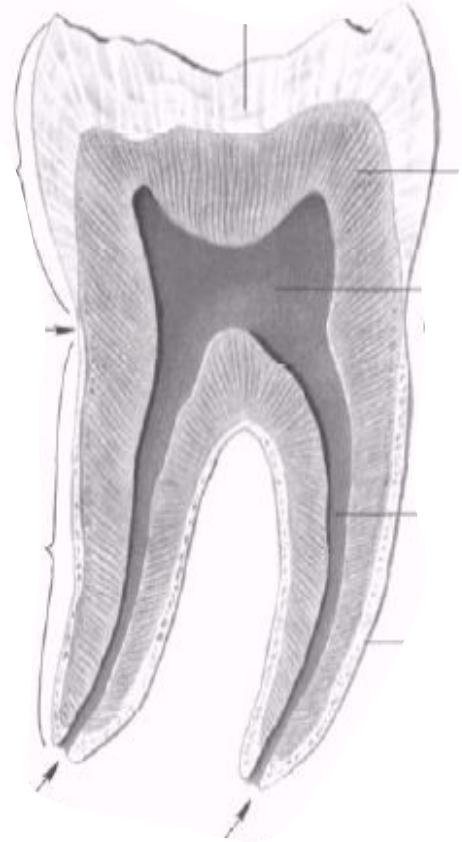
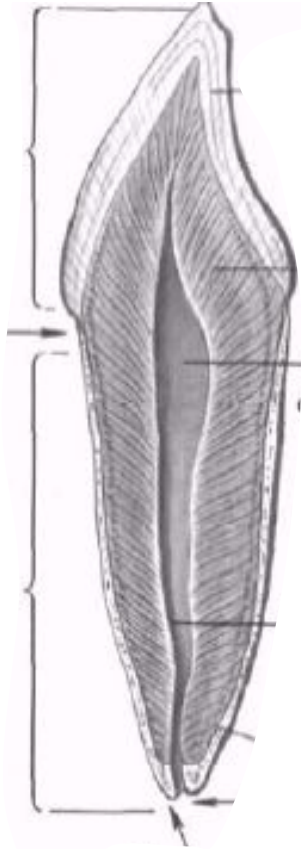
Зубы, большие и малые слюнные железы.





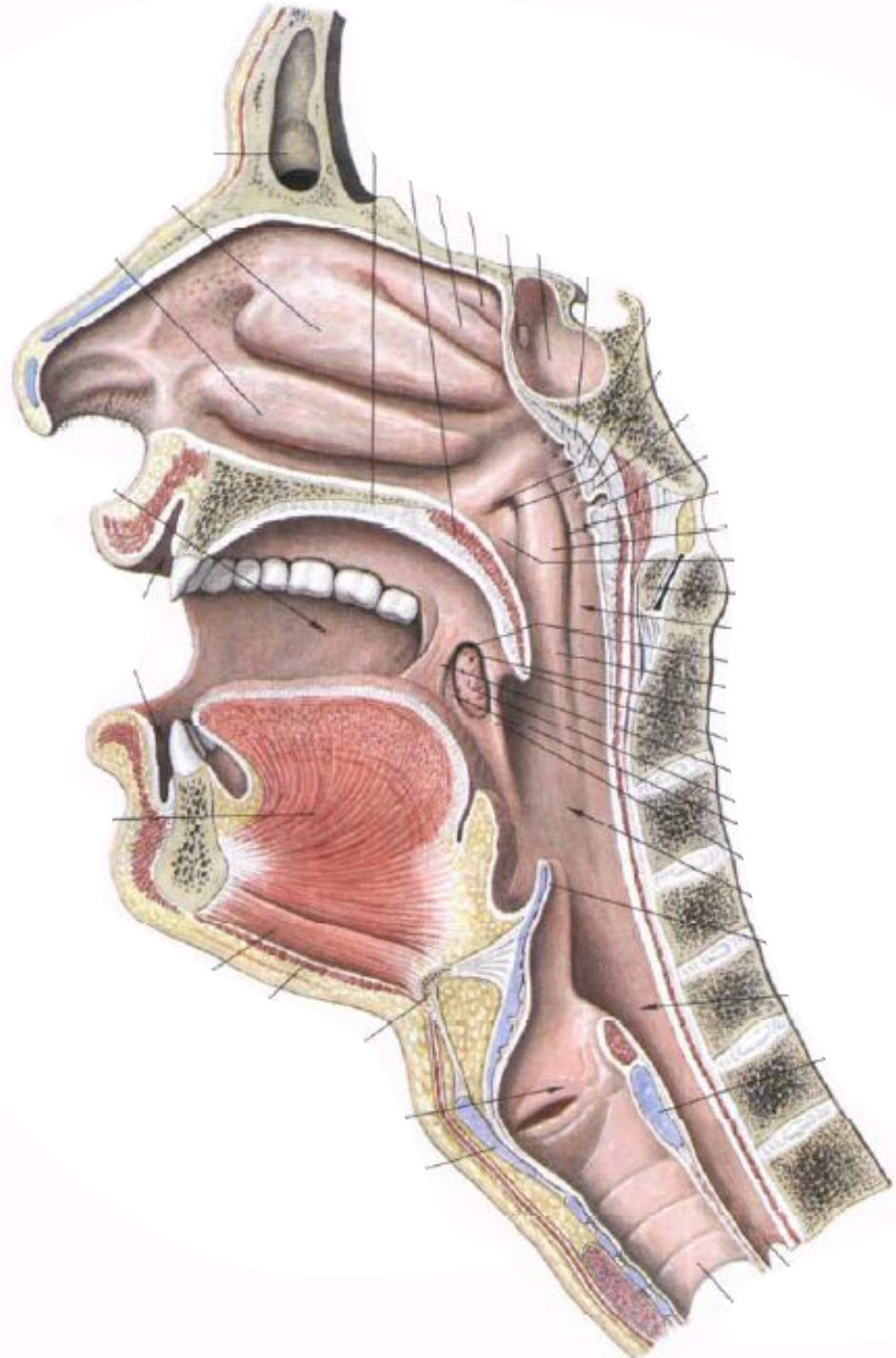


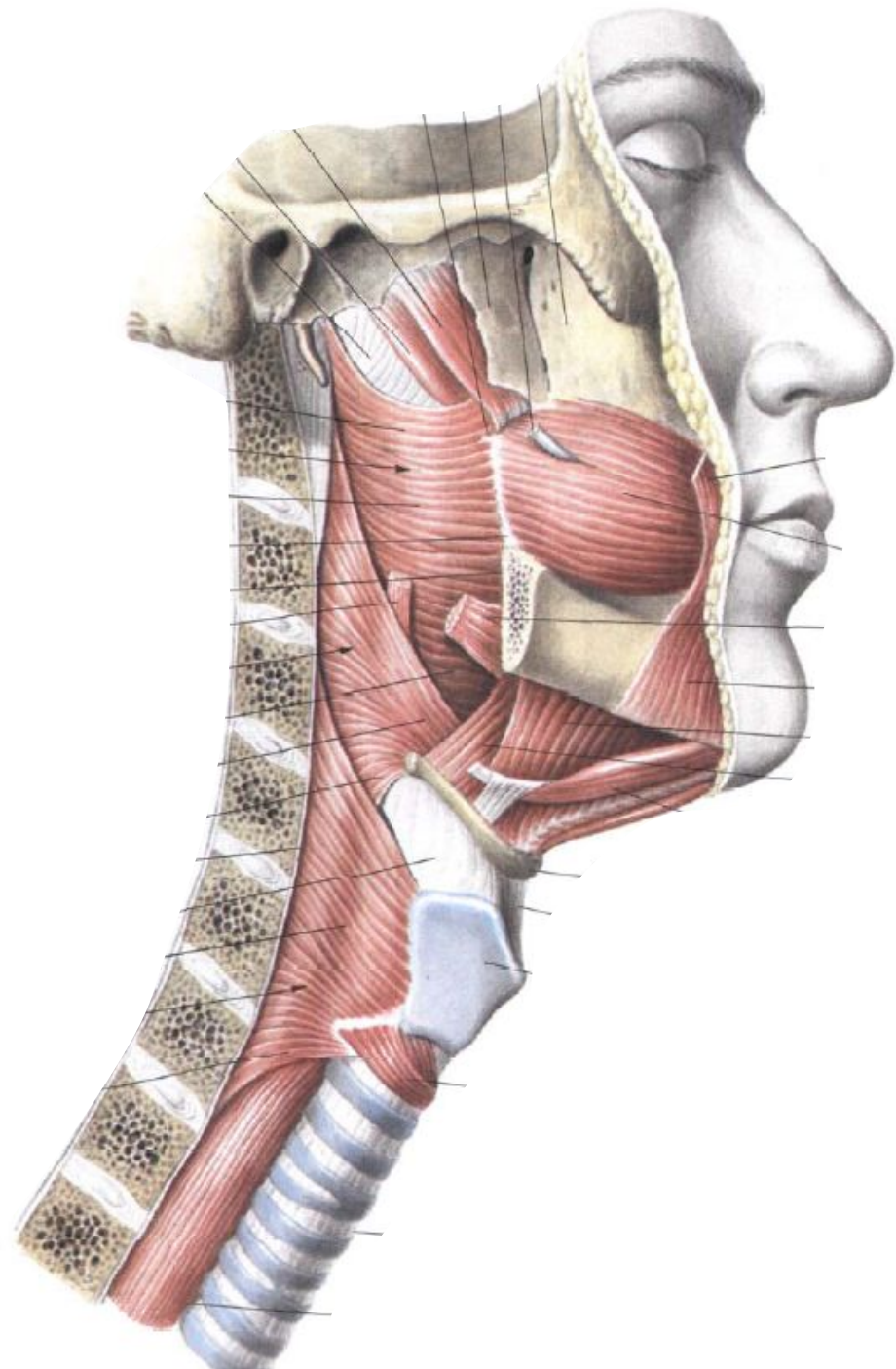


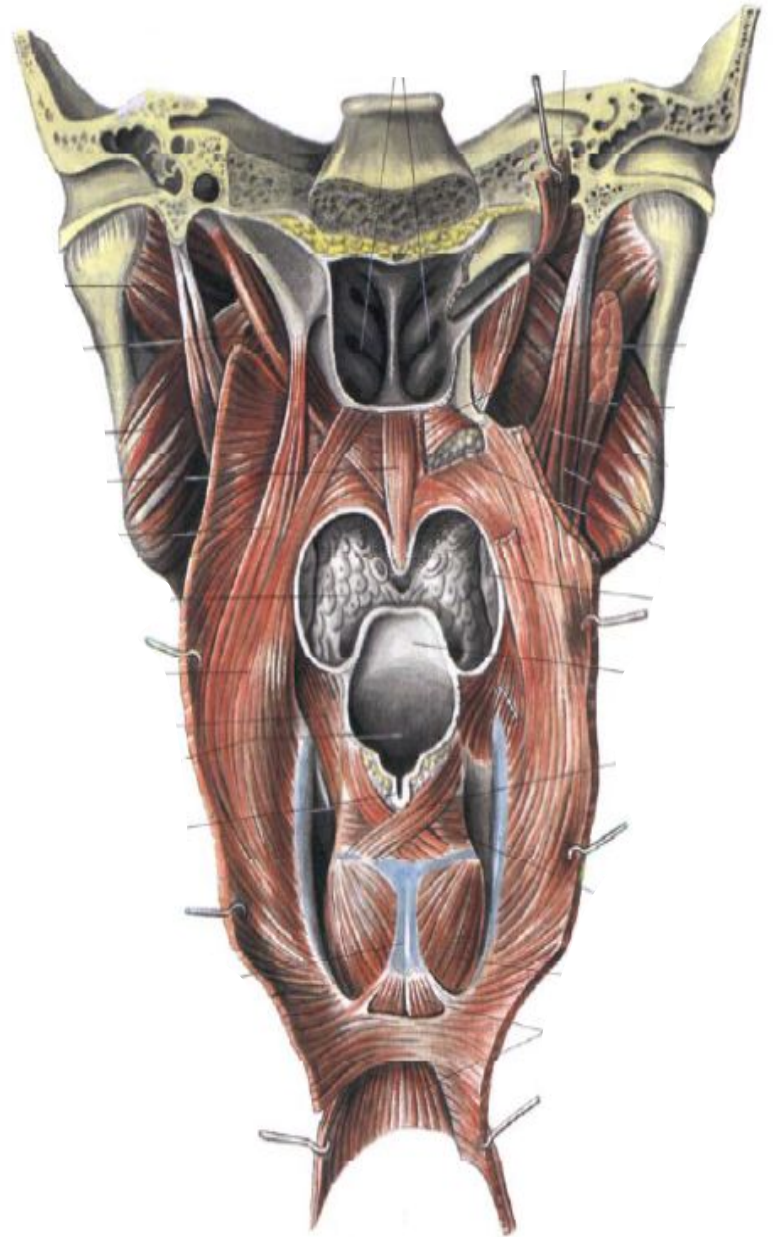
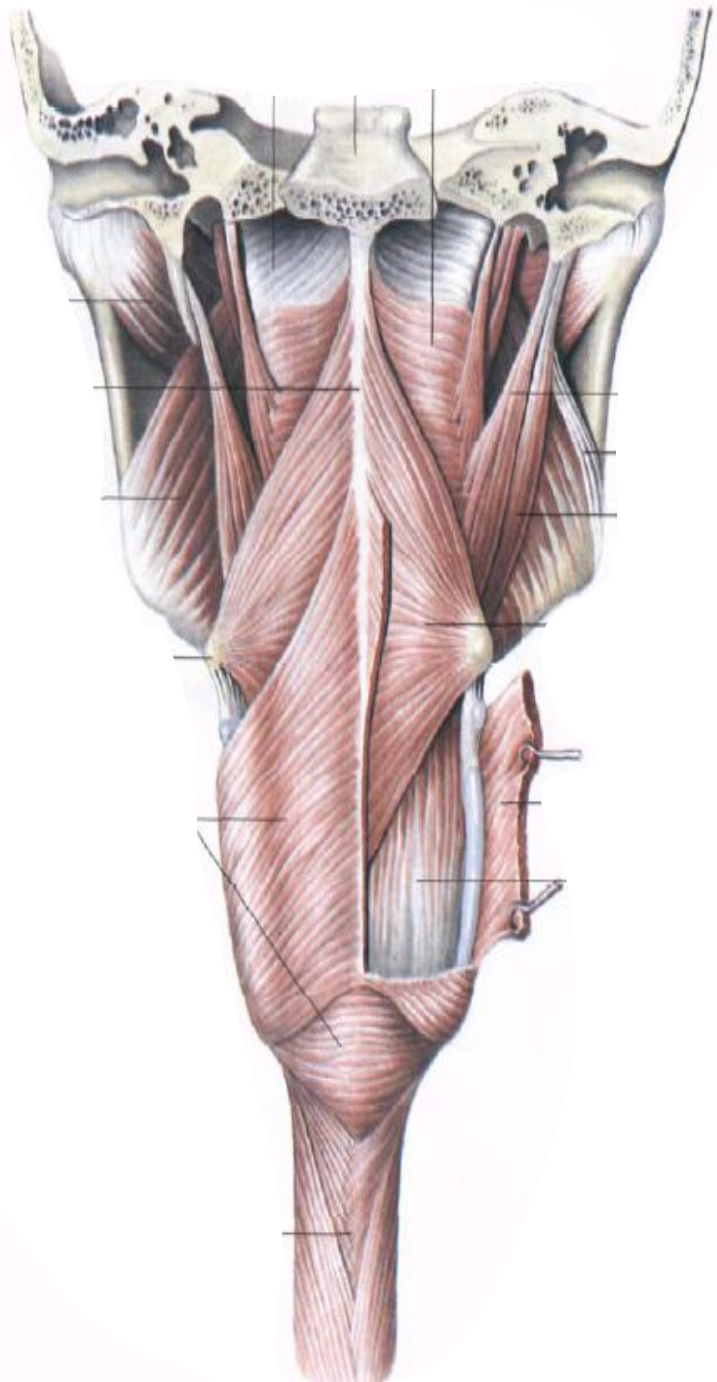


# Занятие №3

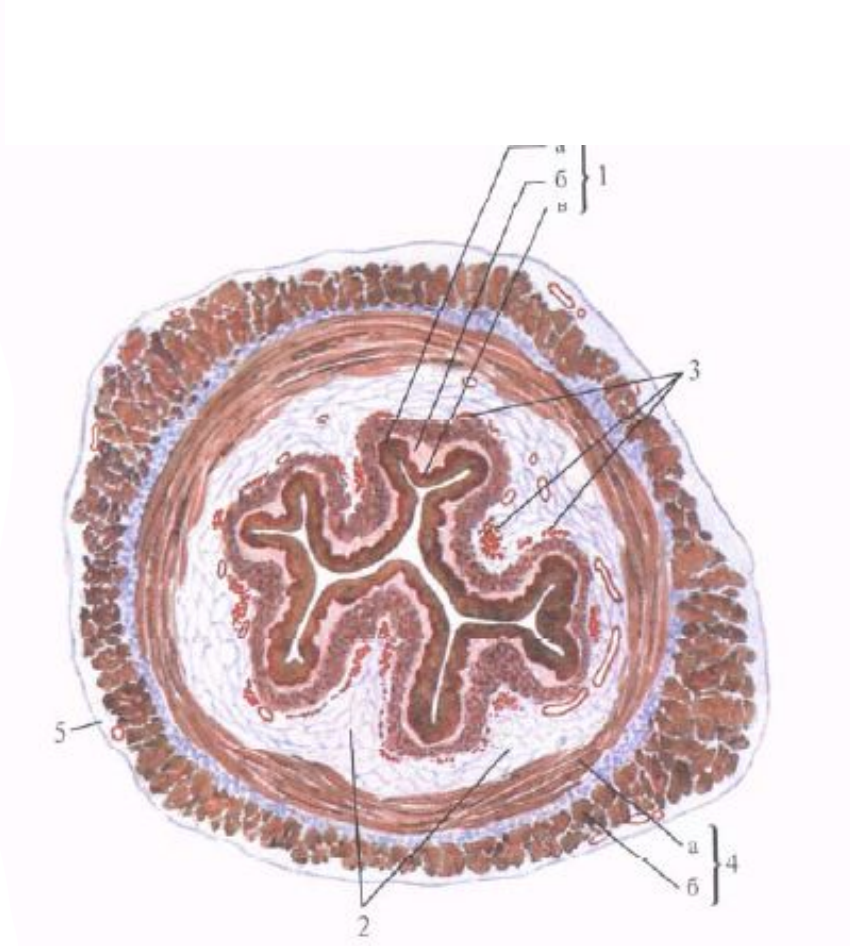
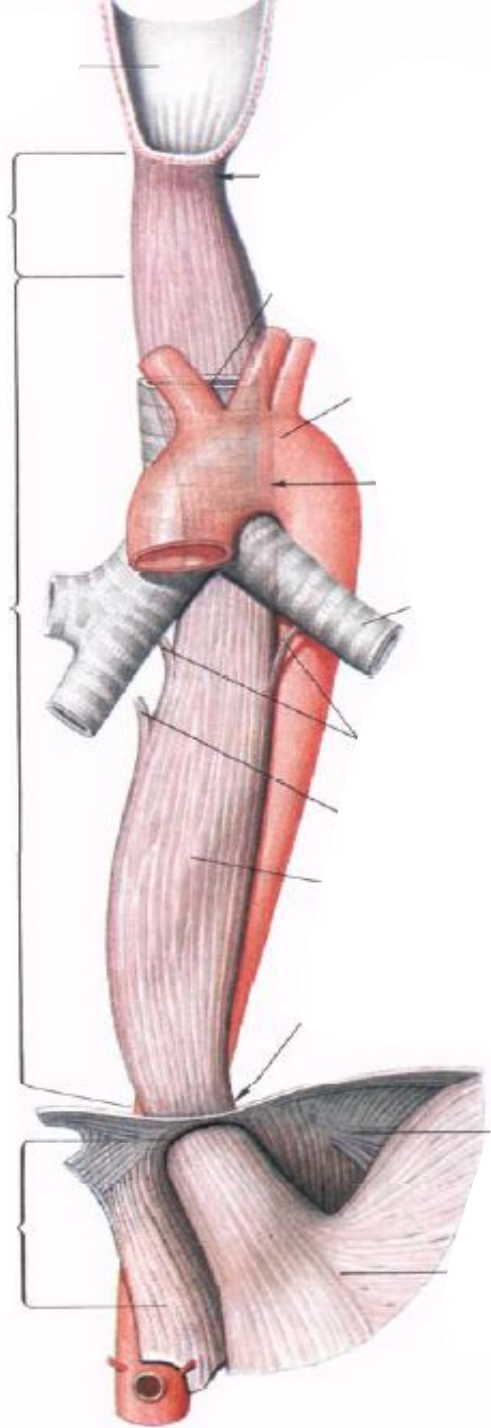
Глотка, пищевод. Лимфоидное глоточное кольцо. Анатомия желудка.

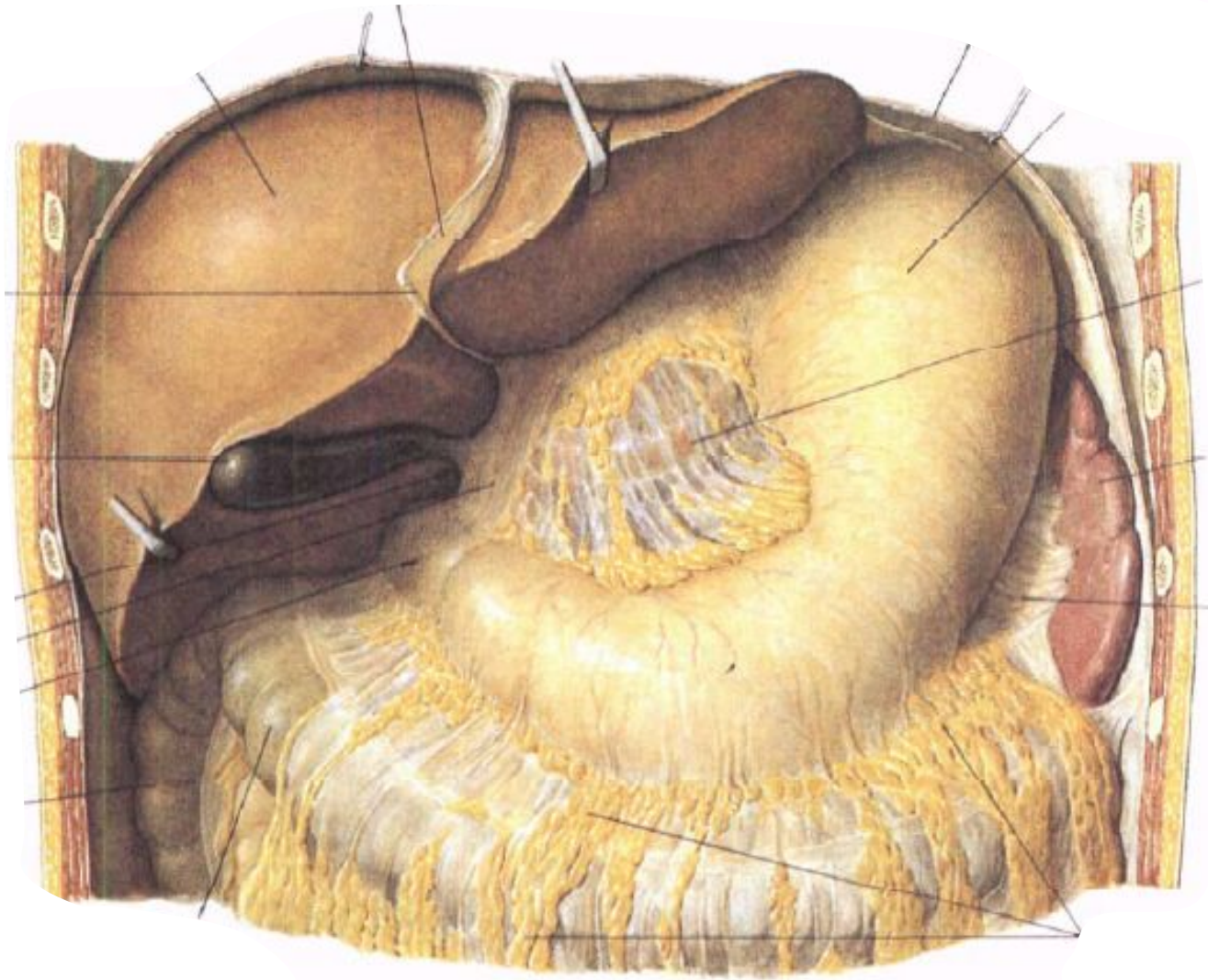


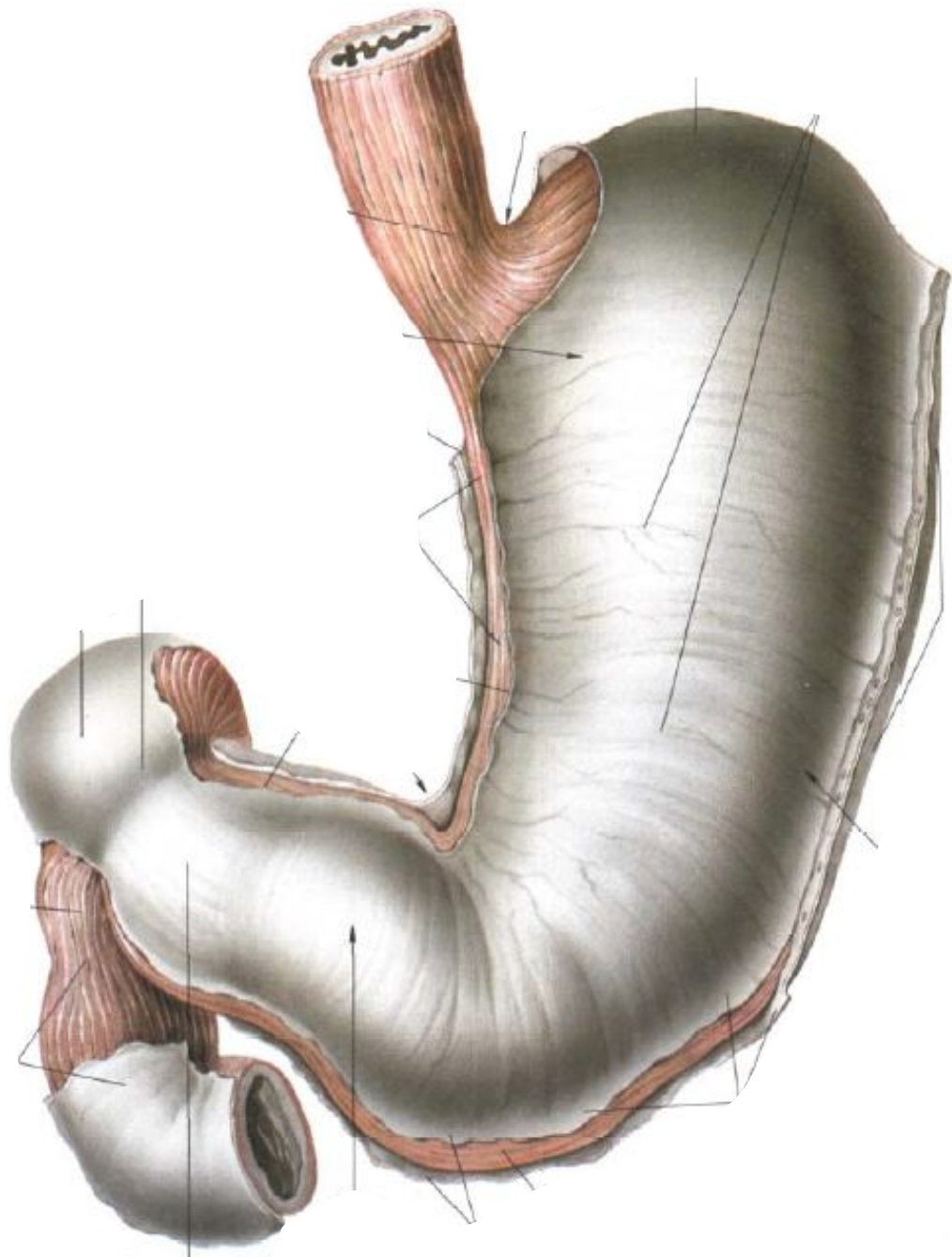




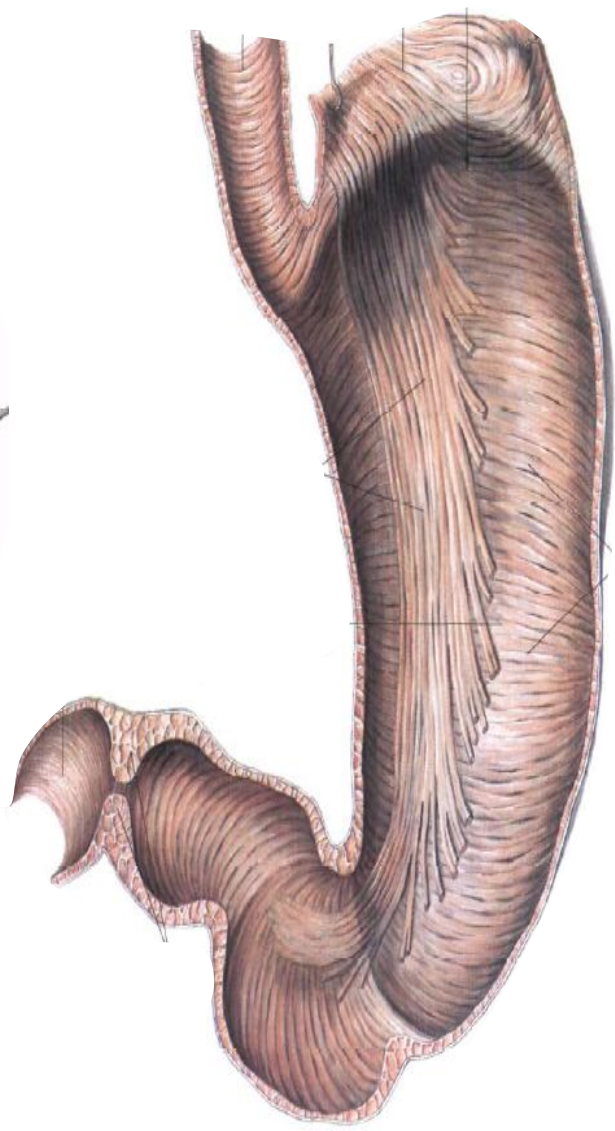
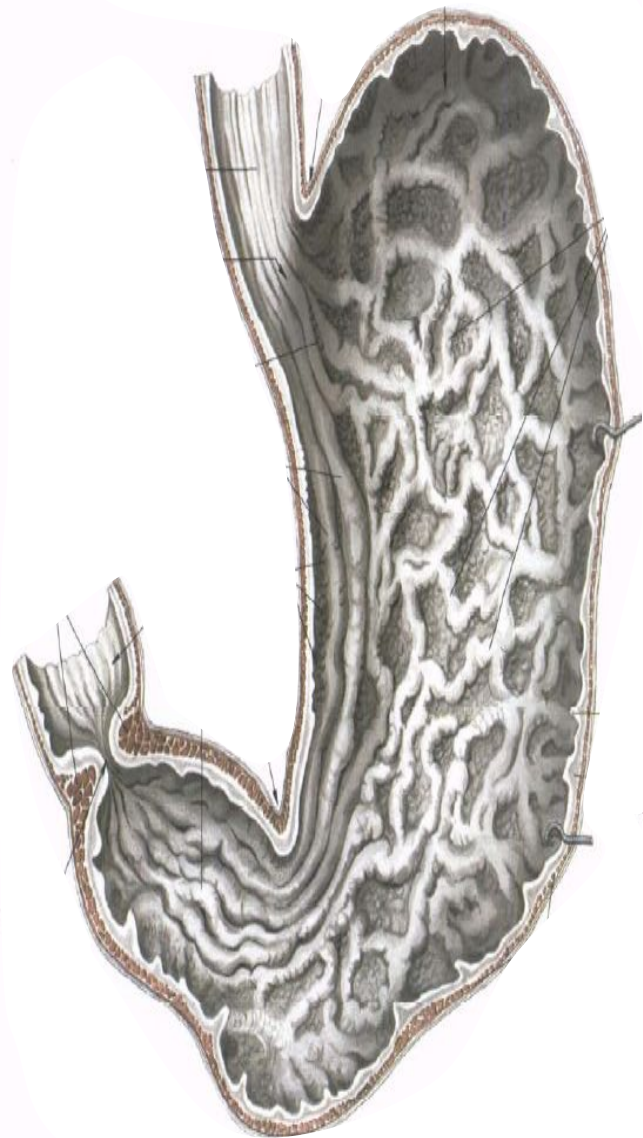








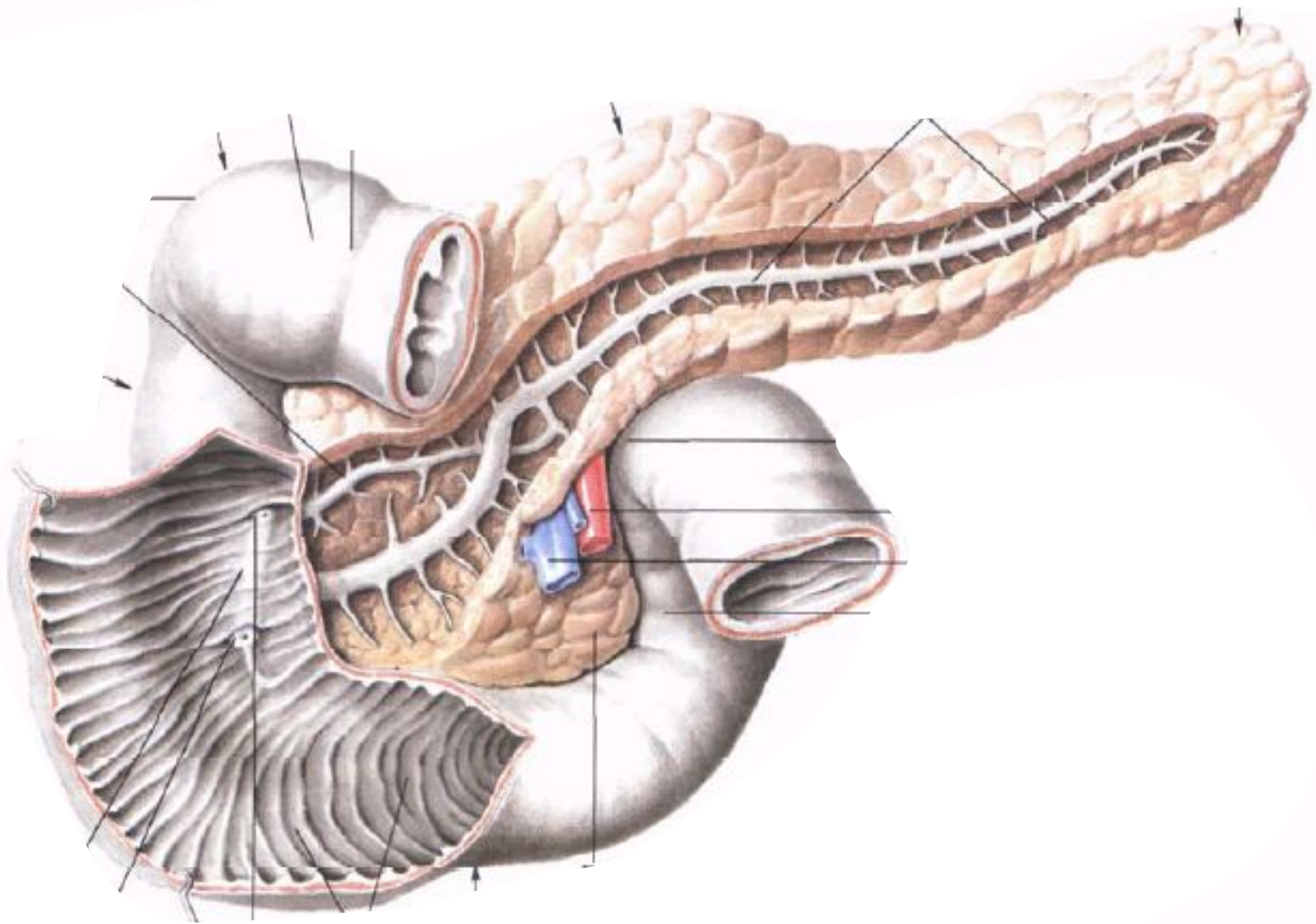


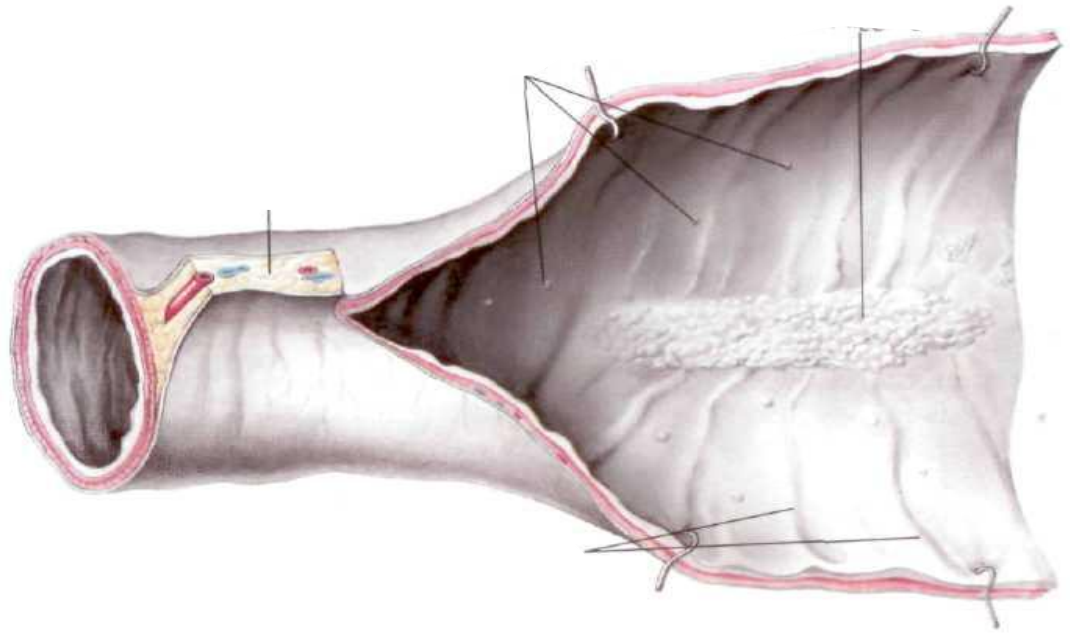
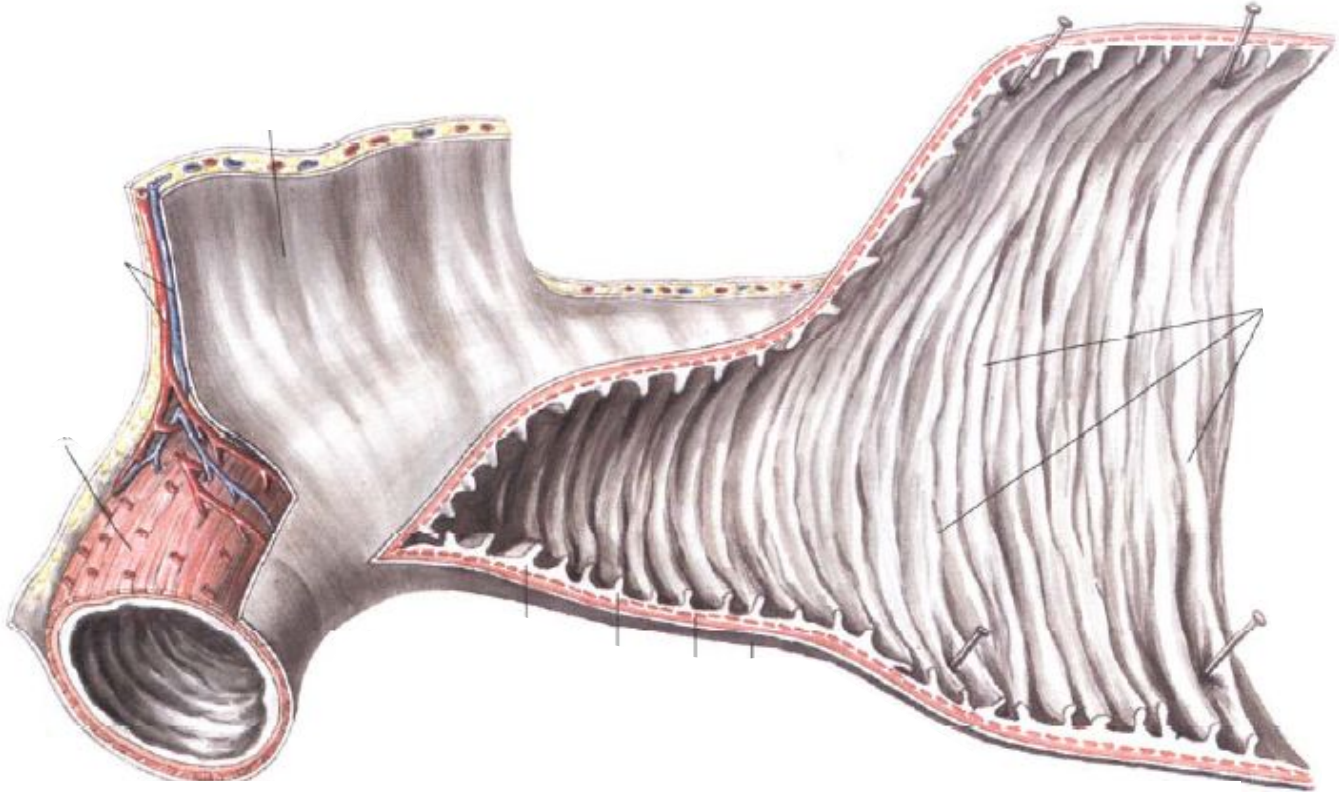


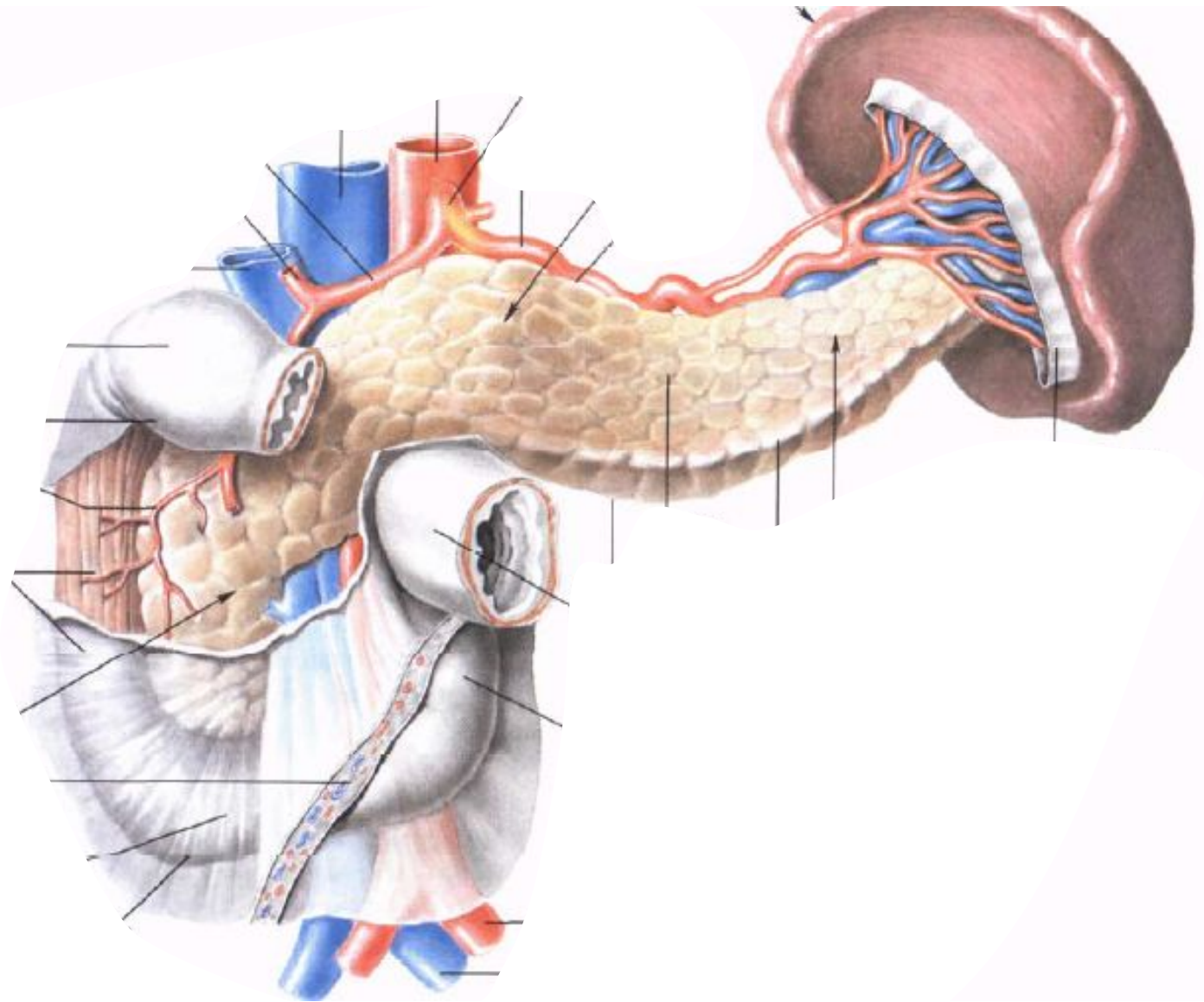
# Занятие №4

Анатомия тонкой и толстой кишки.

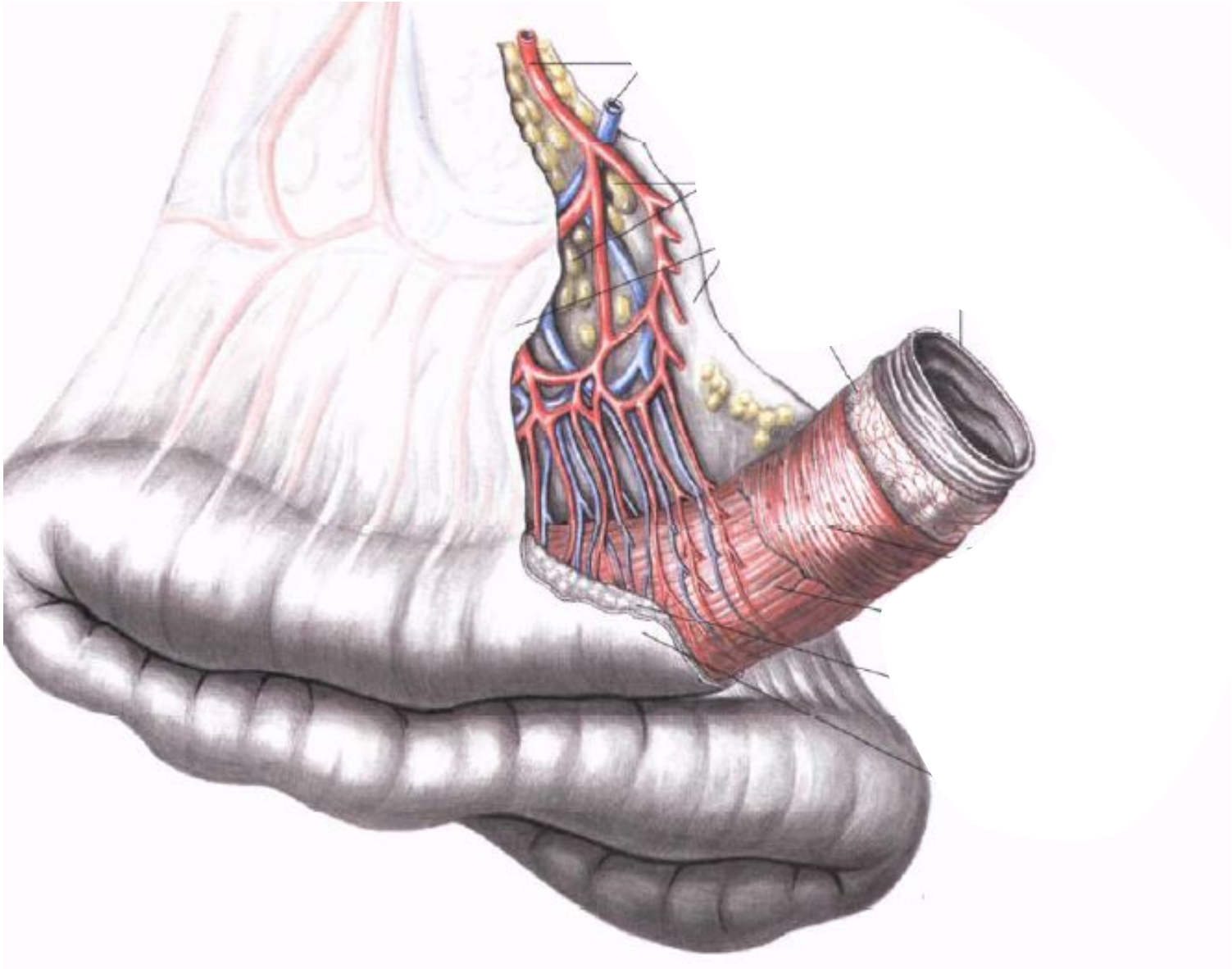


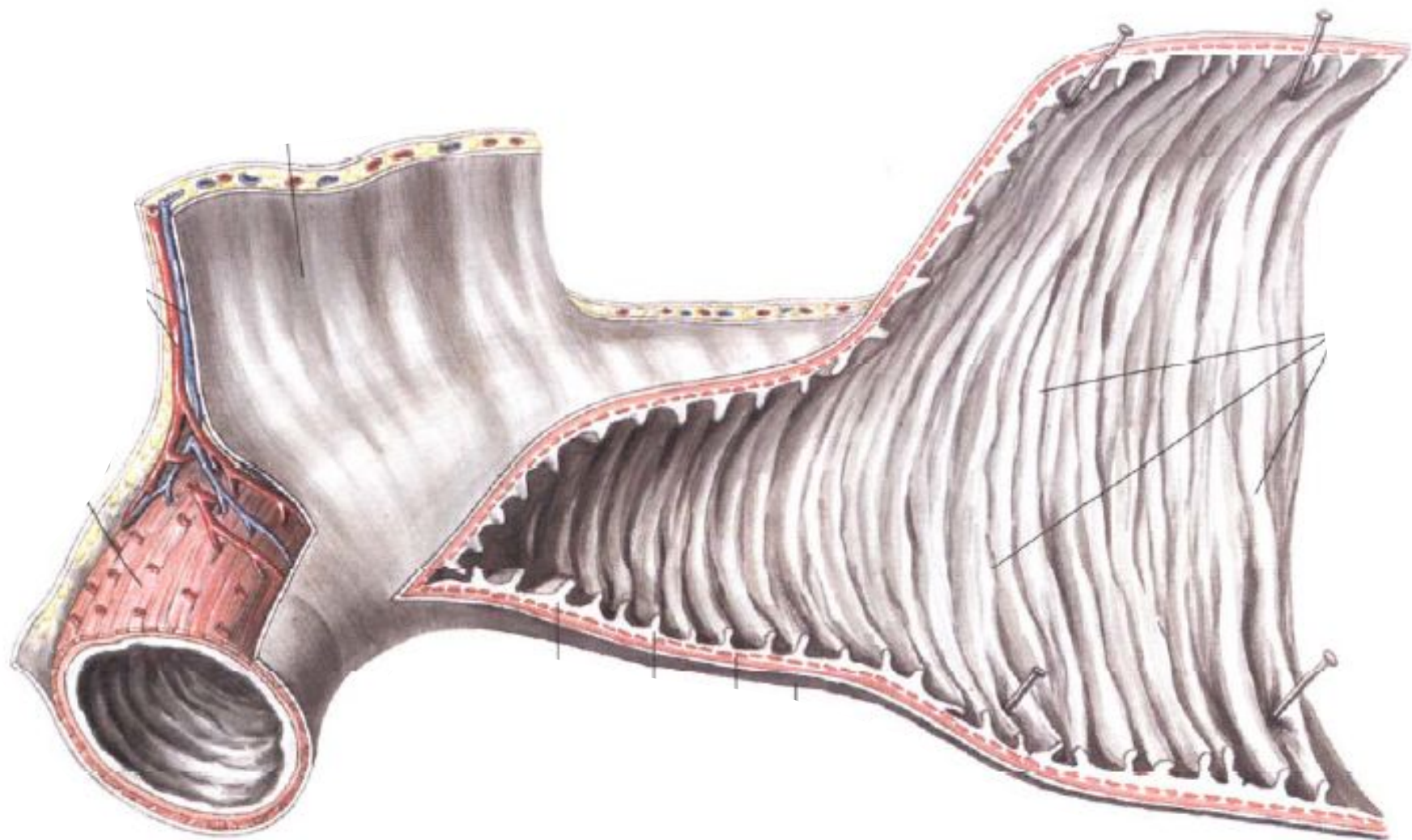




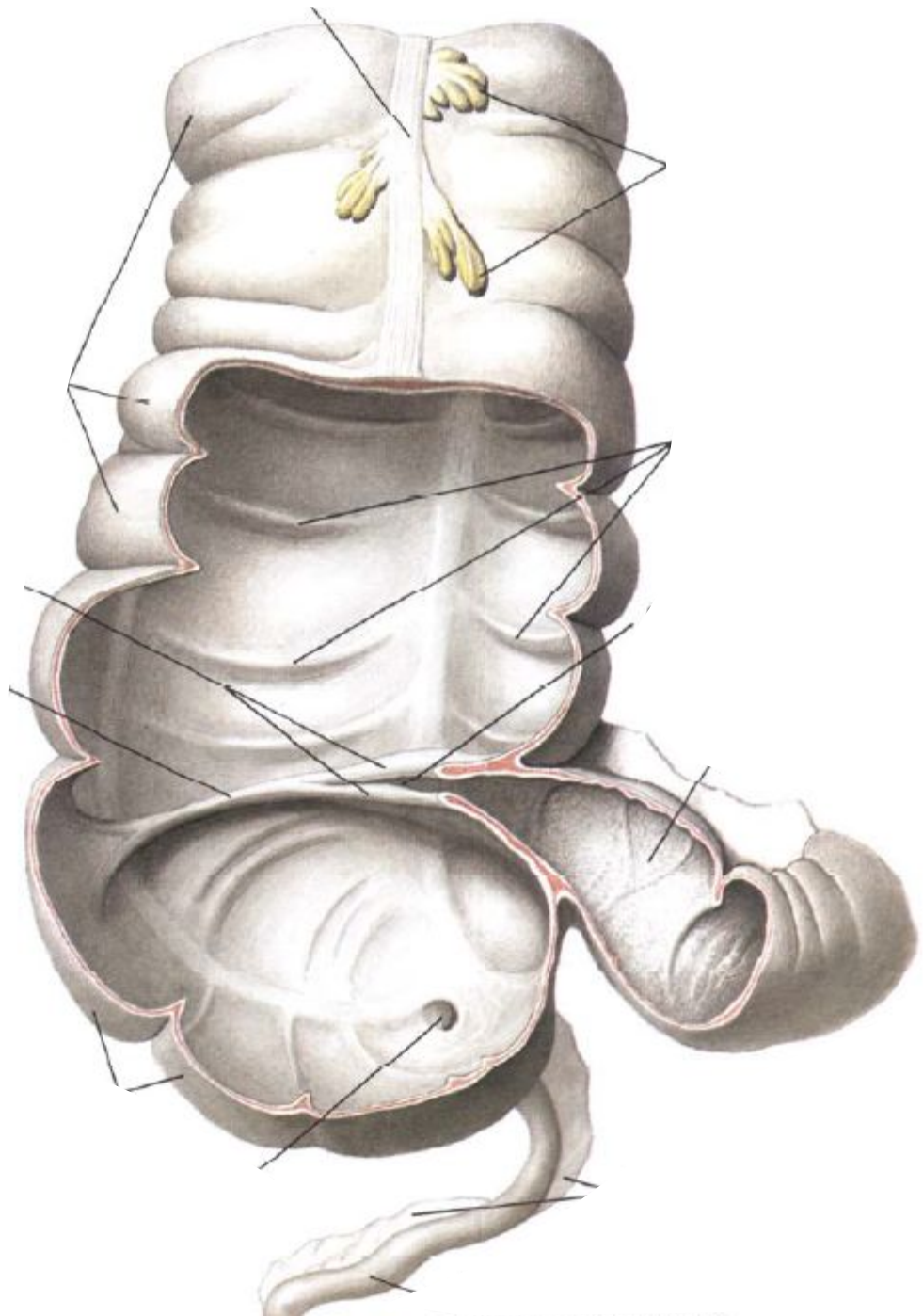


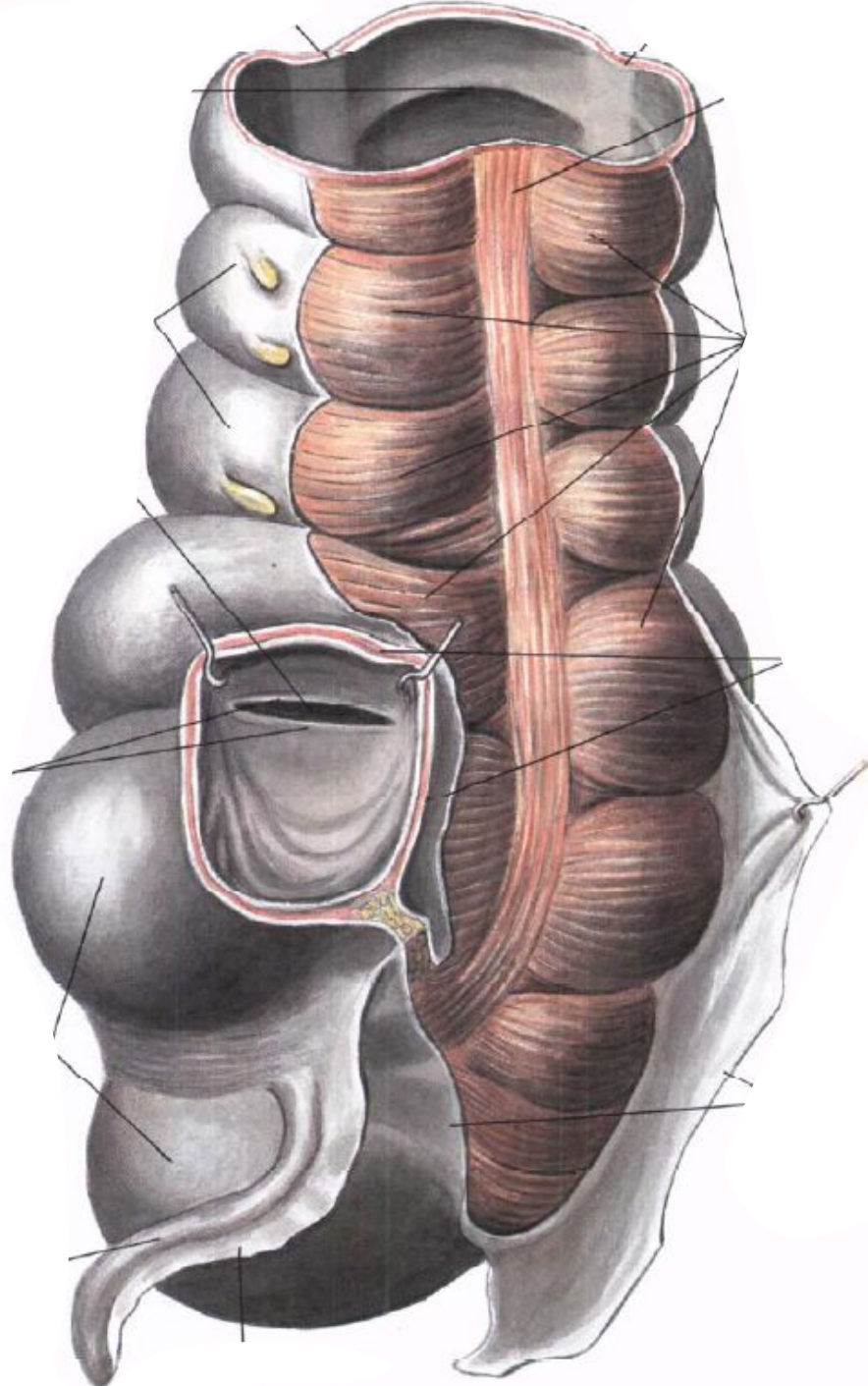




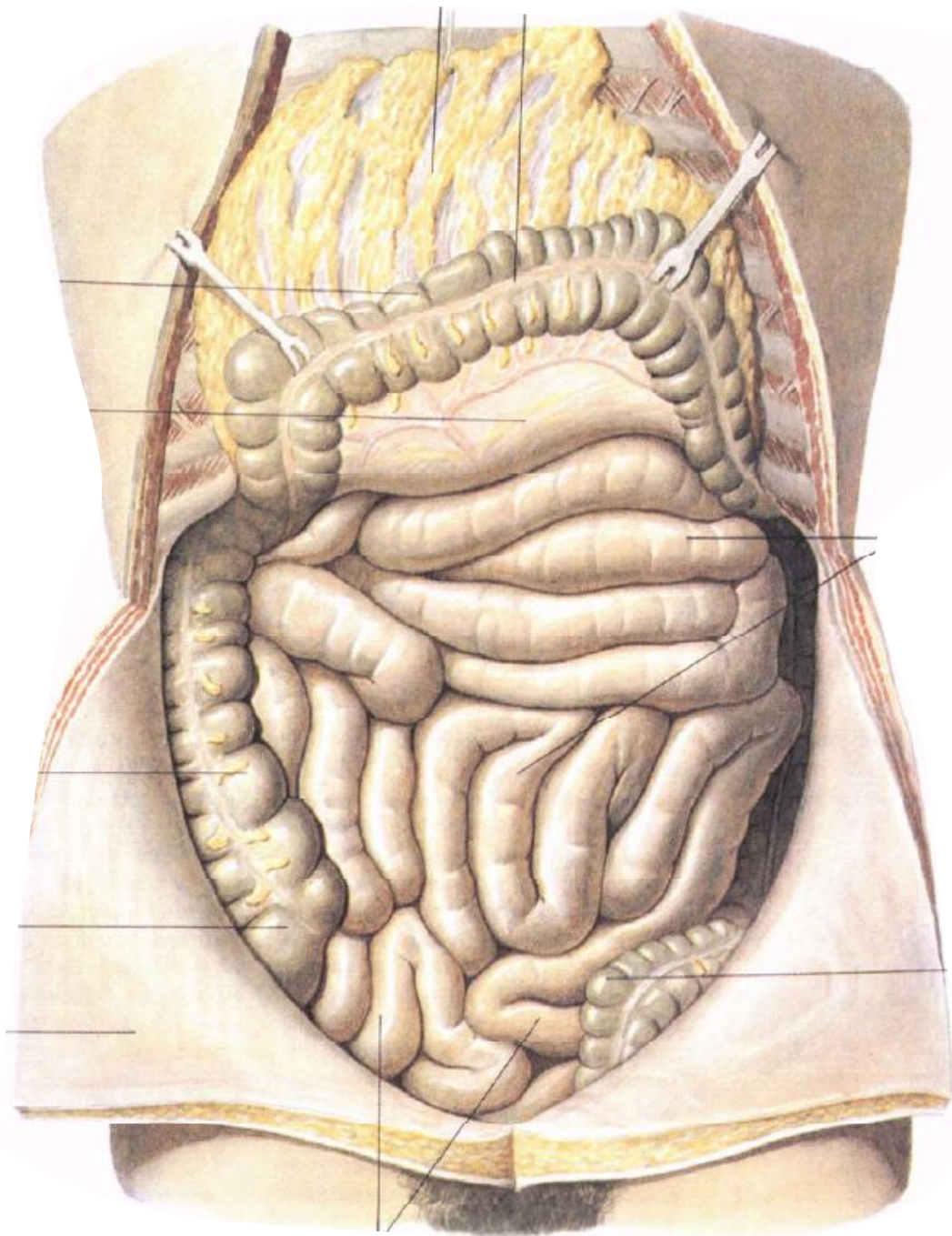




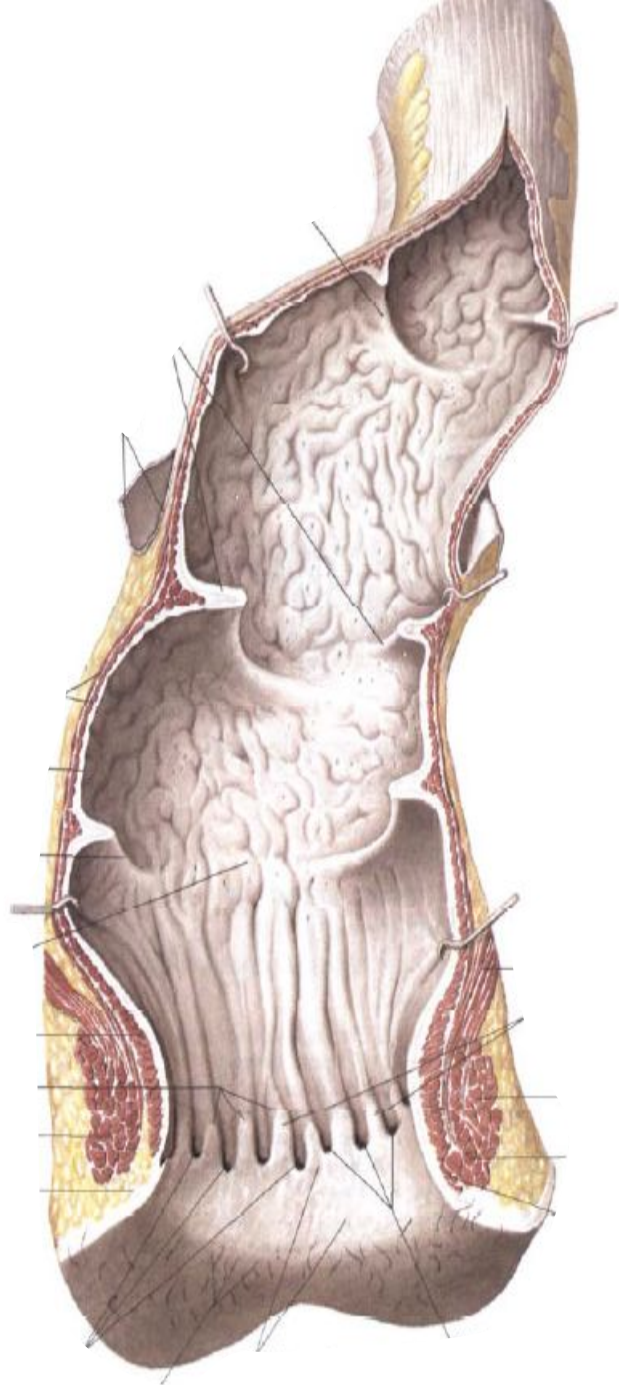
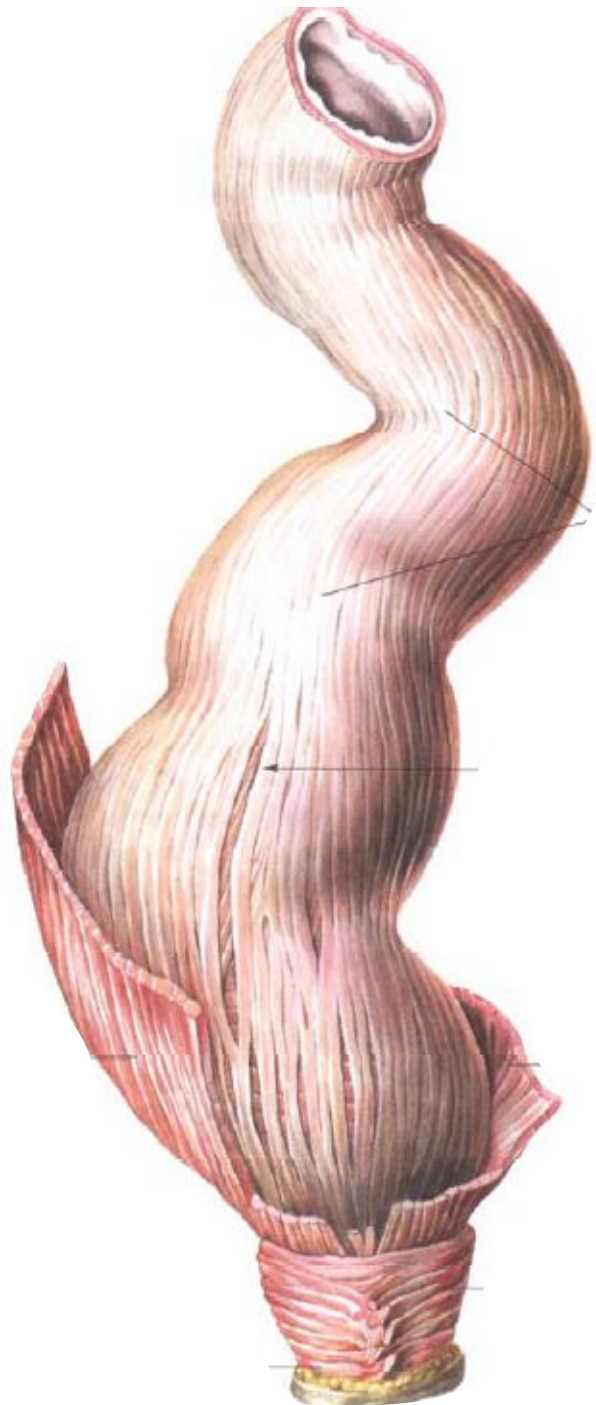


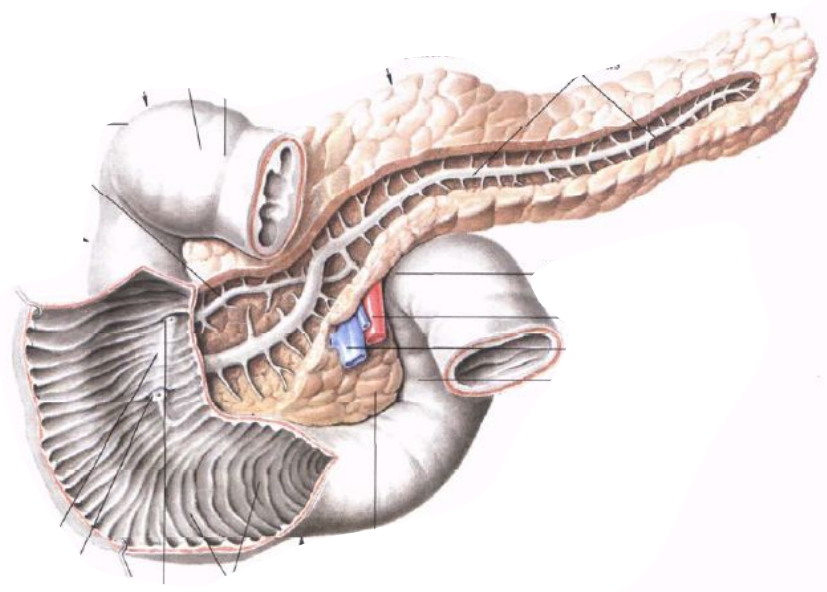
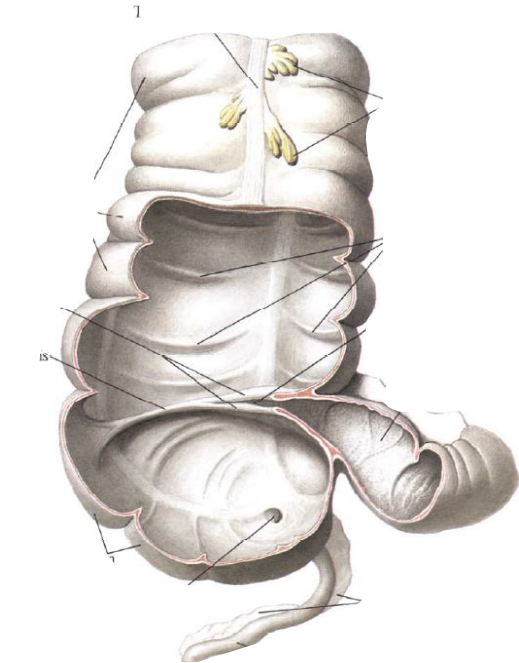
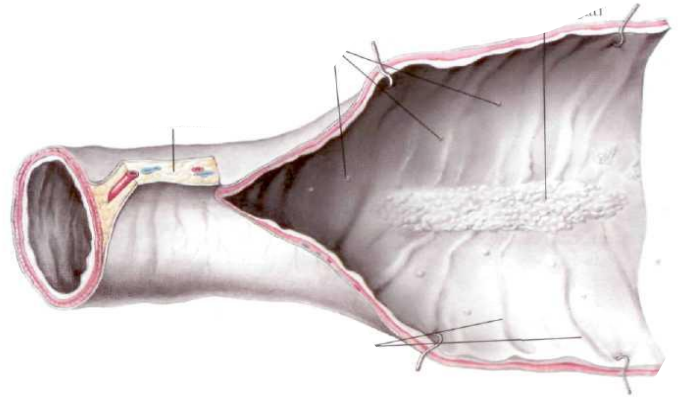
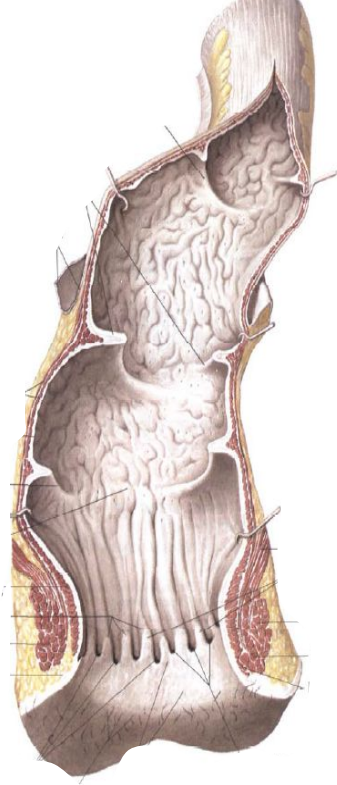
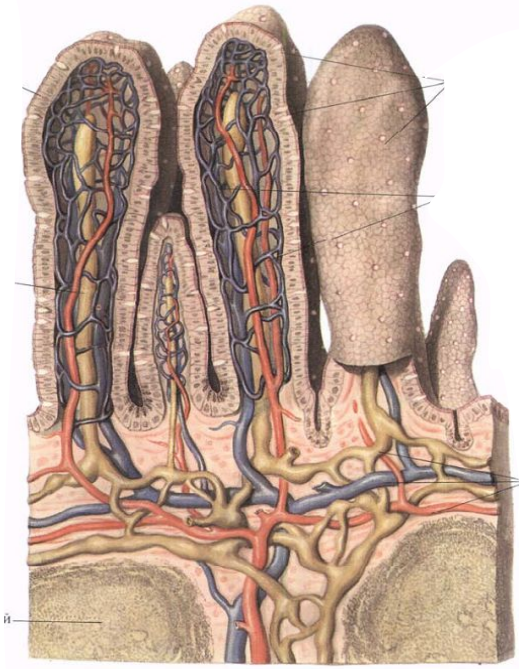




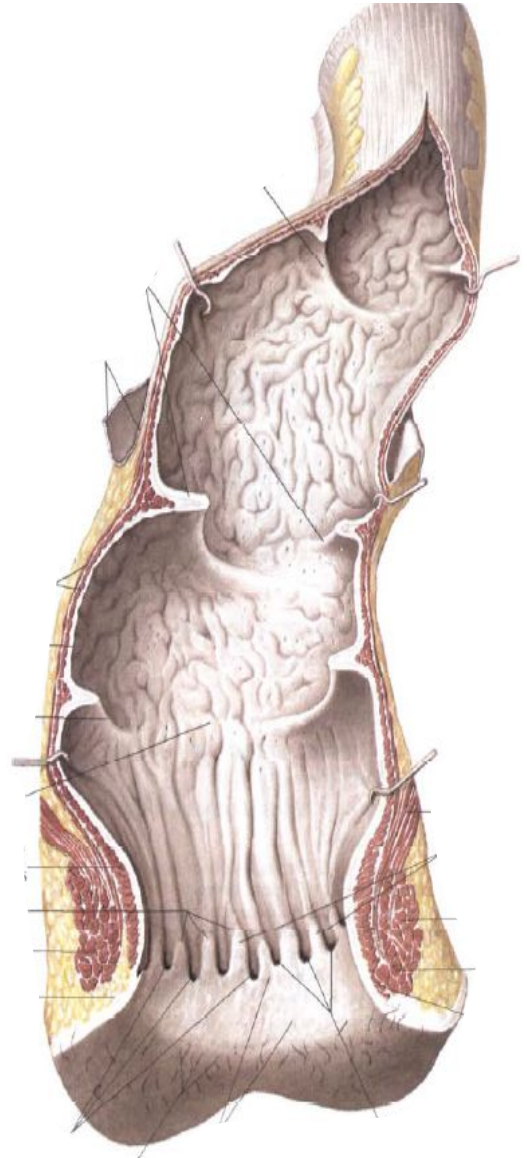
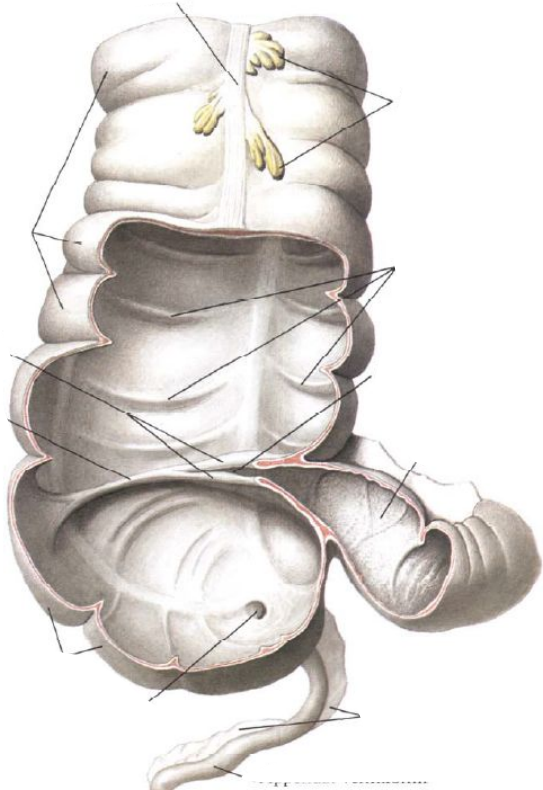
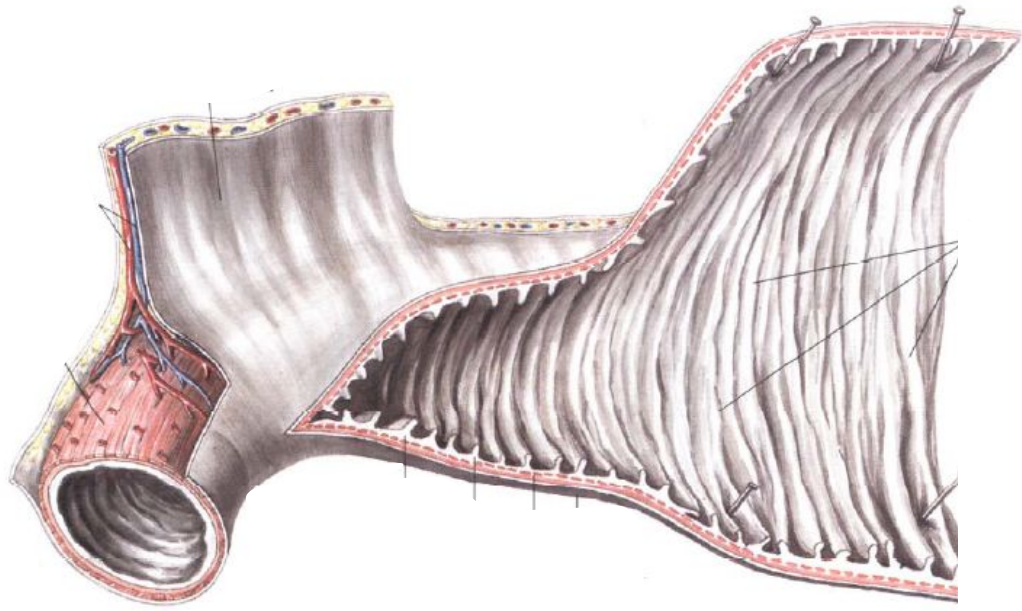


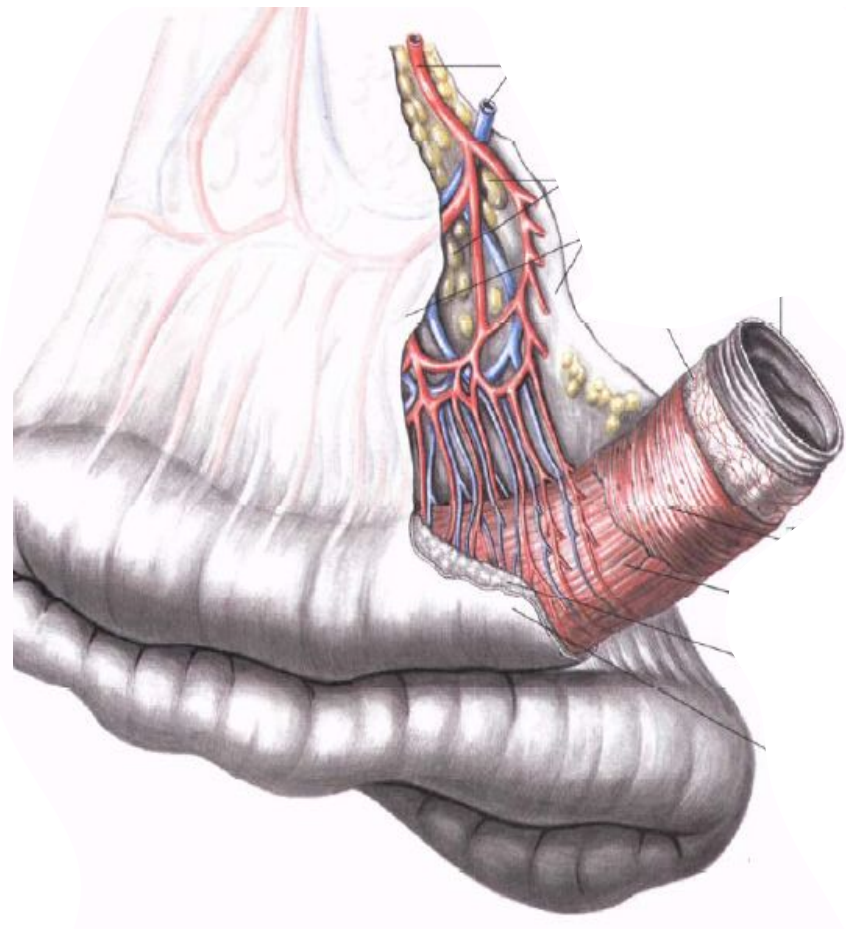
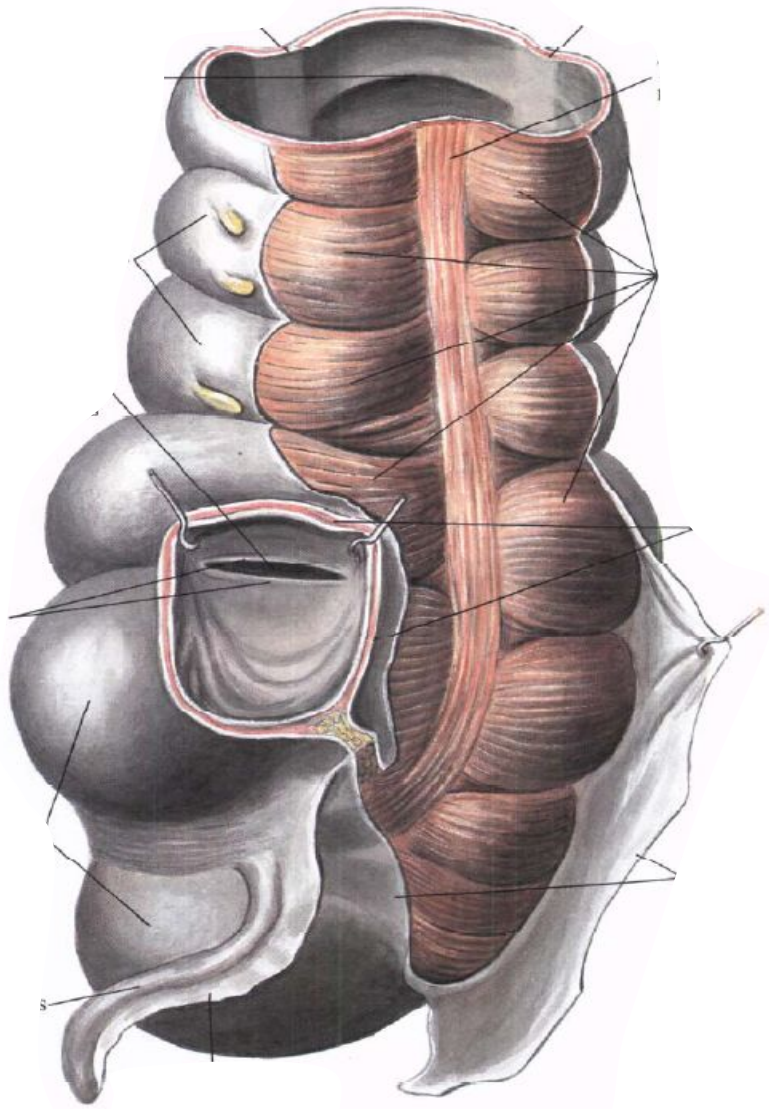








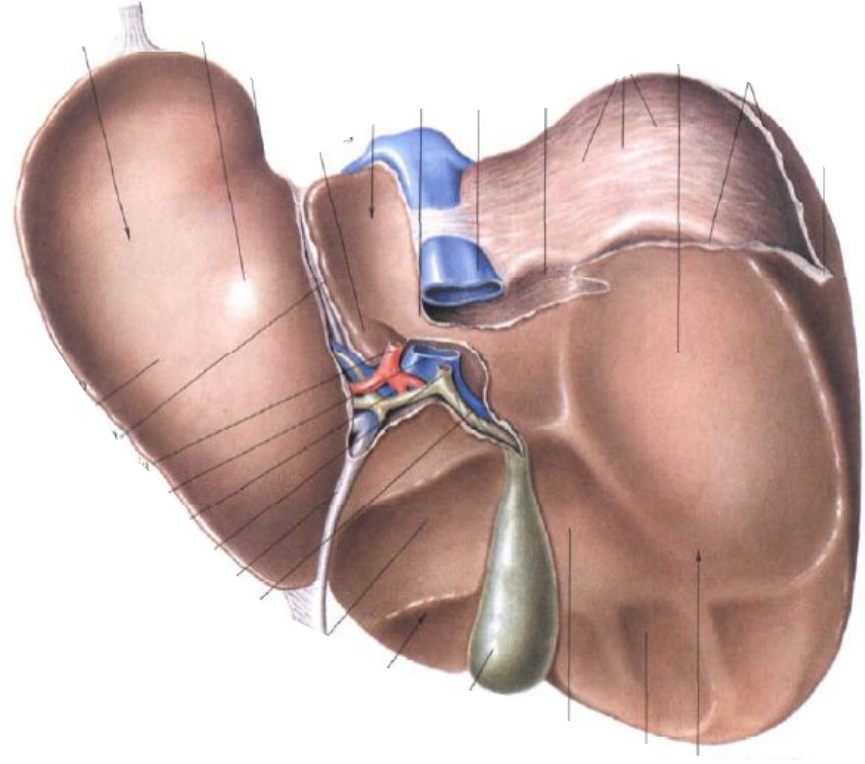
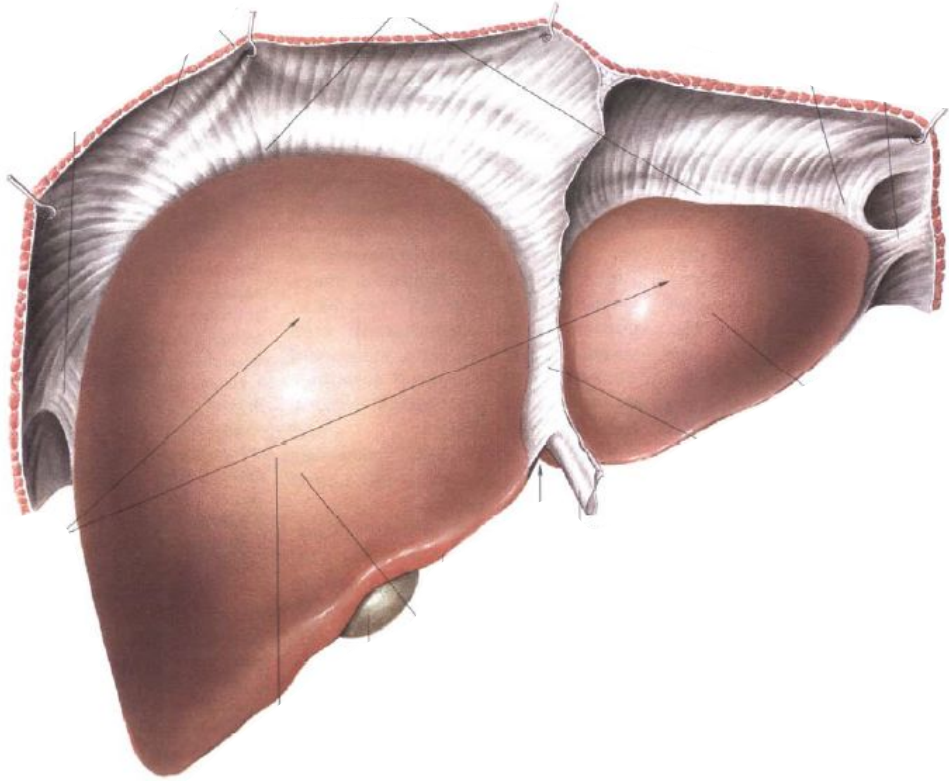


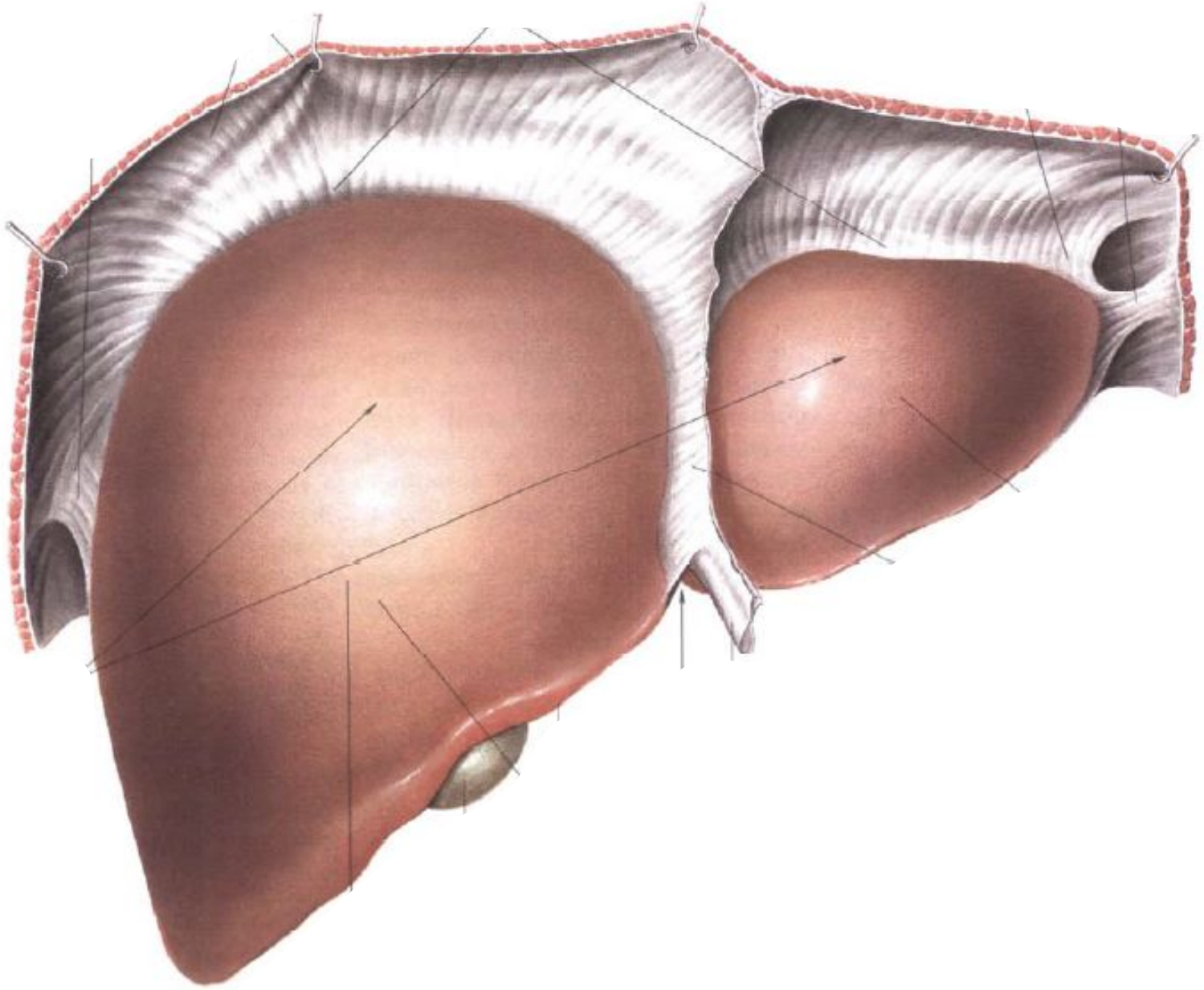


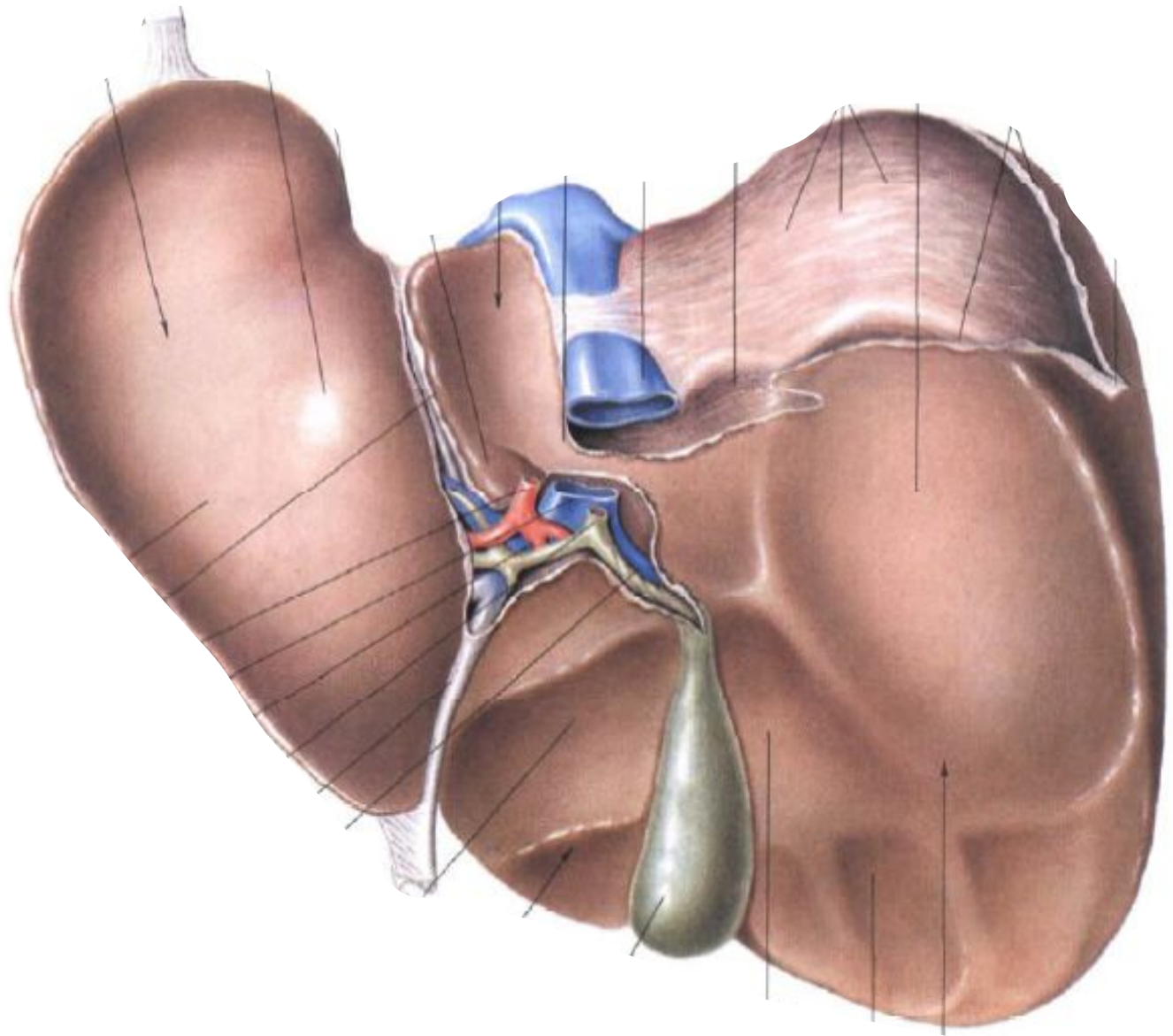


# Занятие №5

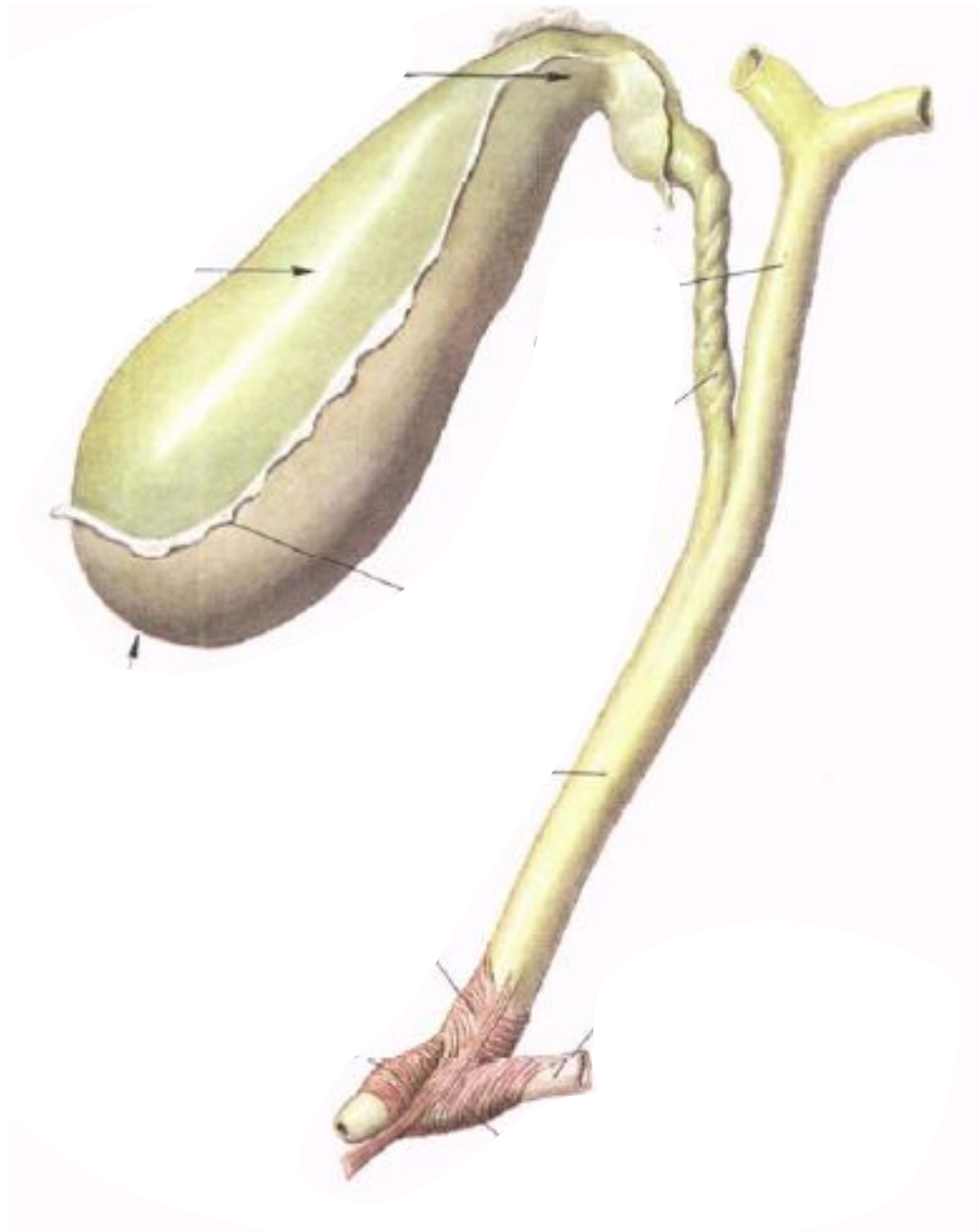
Функциональная анатомия печени и  
поджелудочной железы.

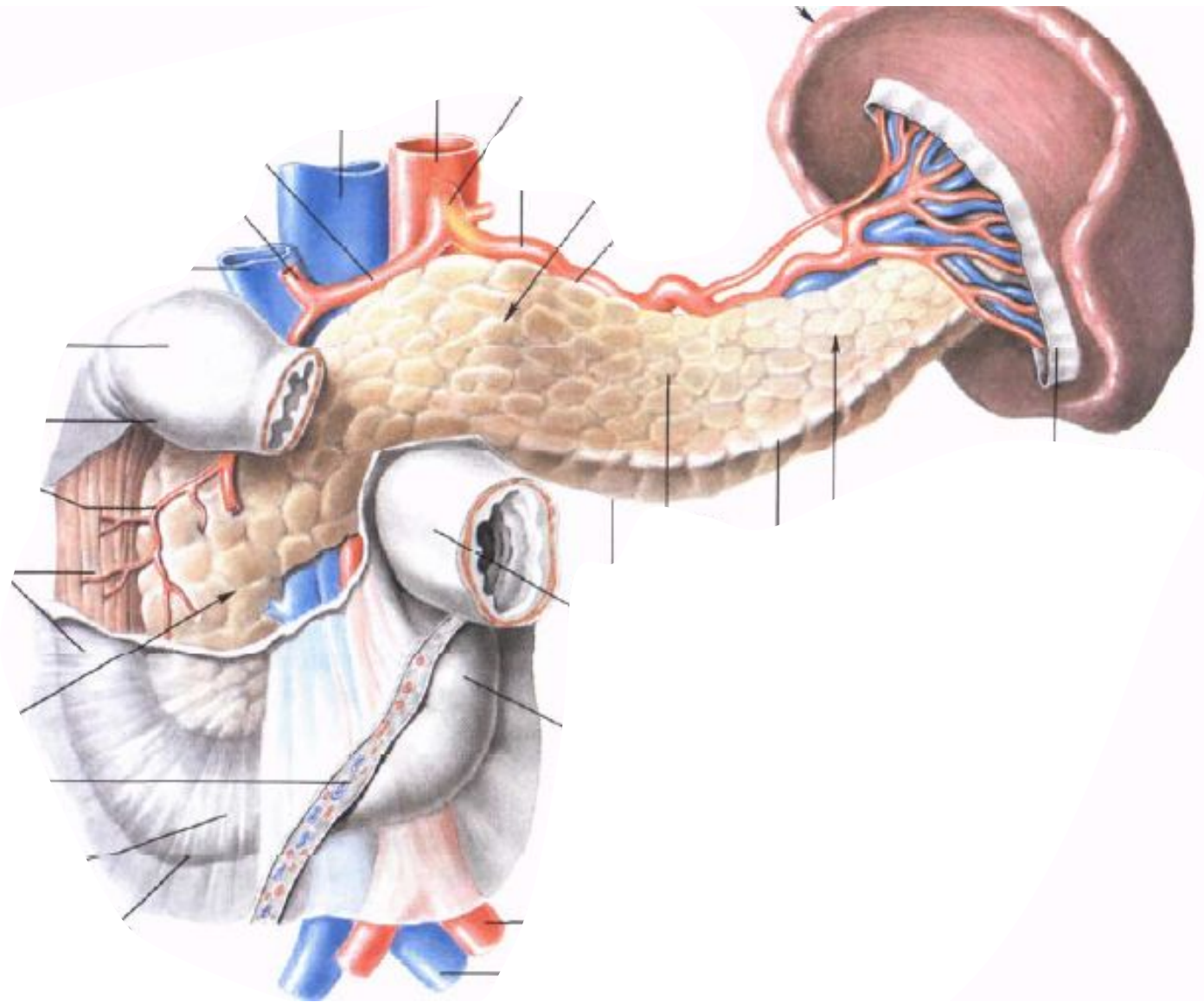


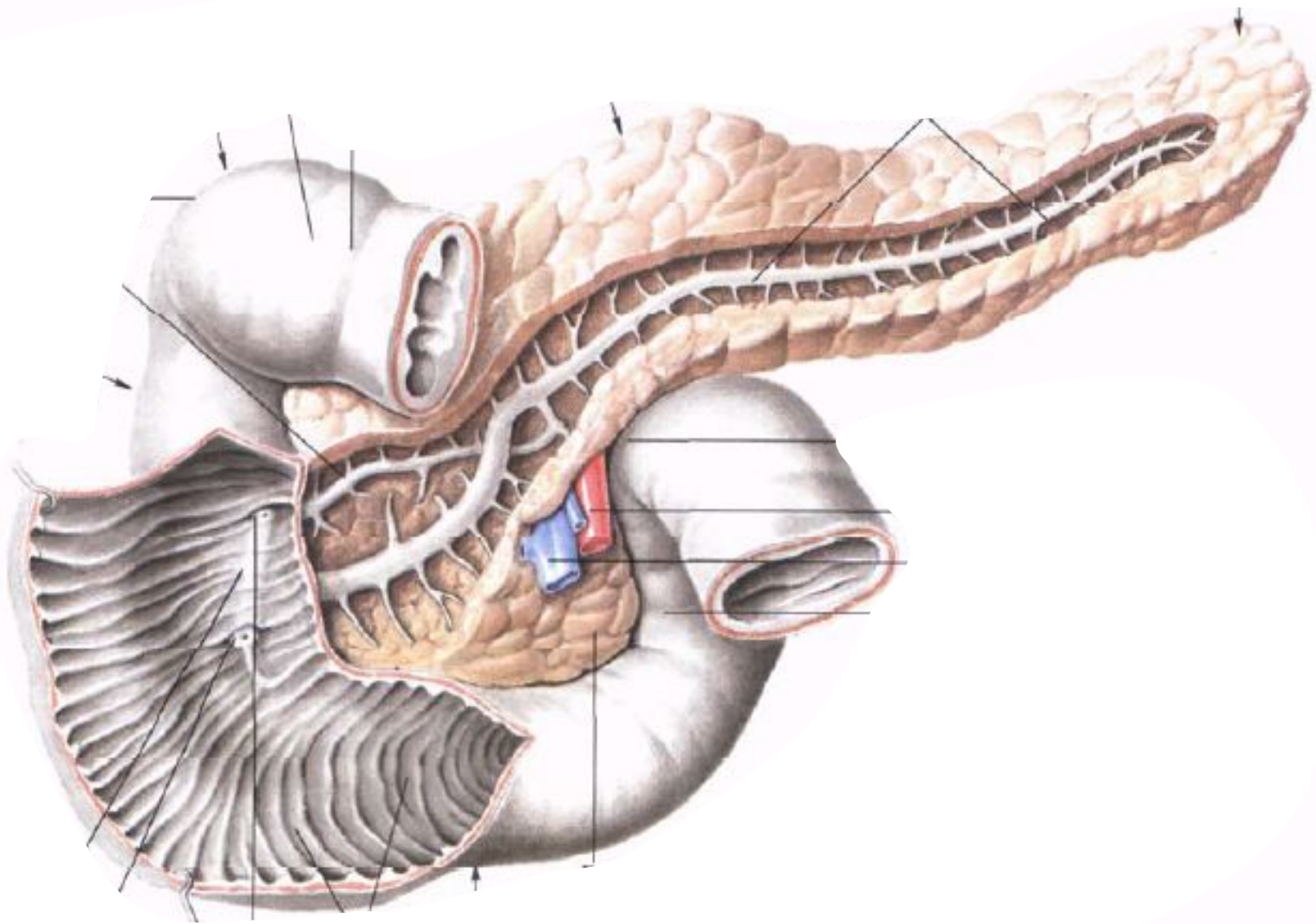


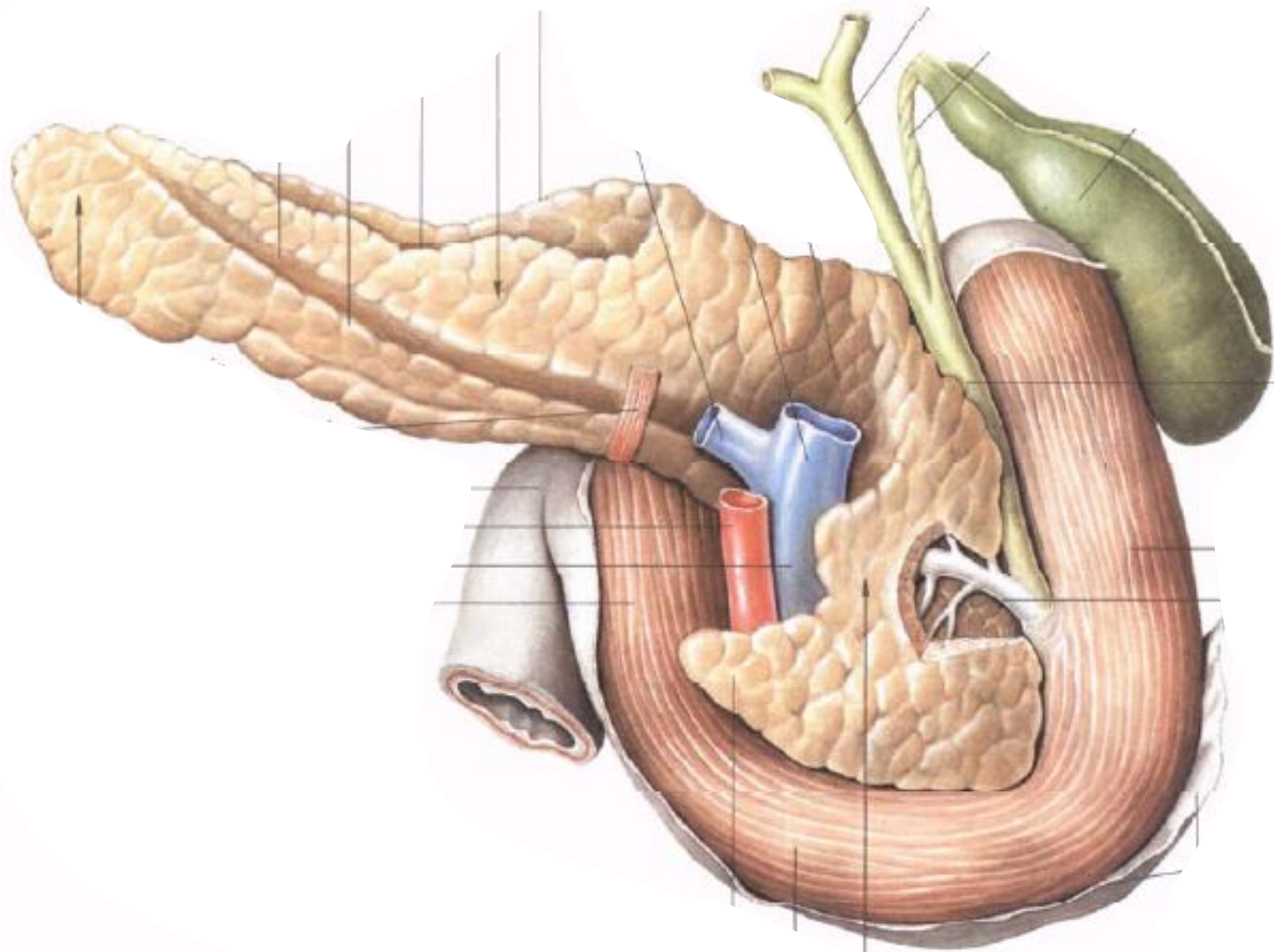








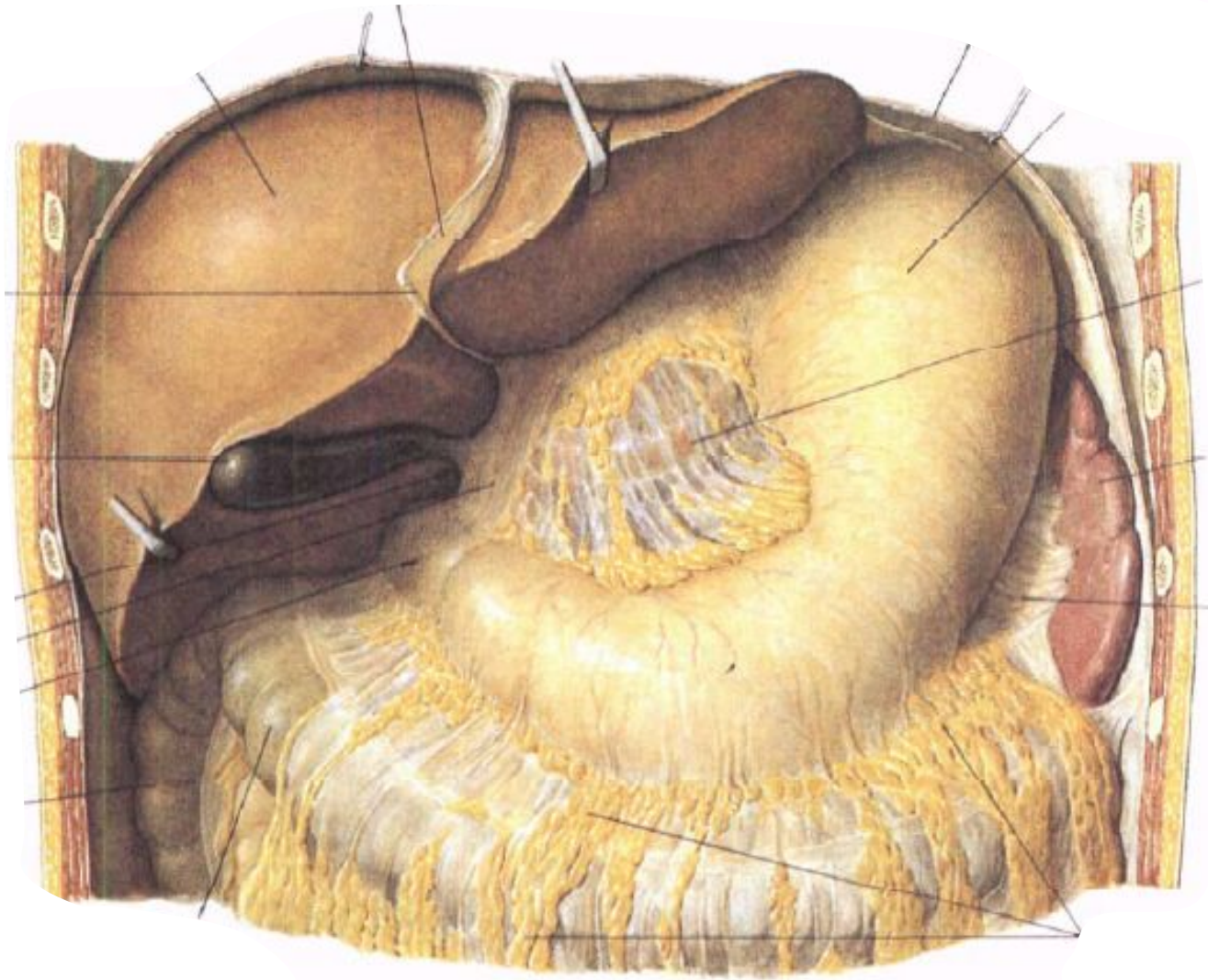


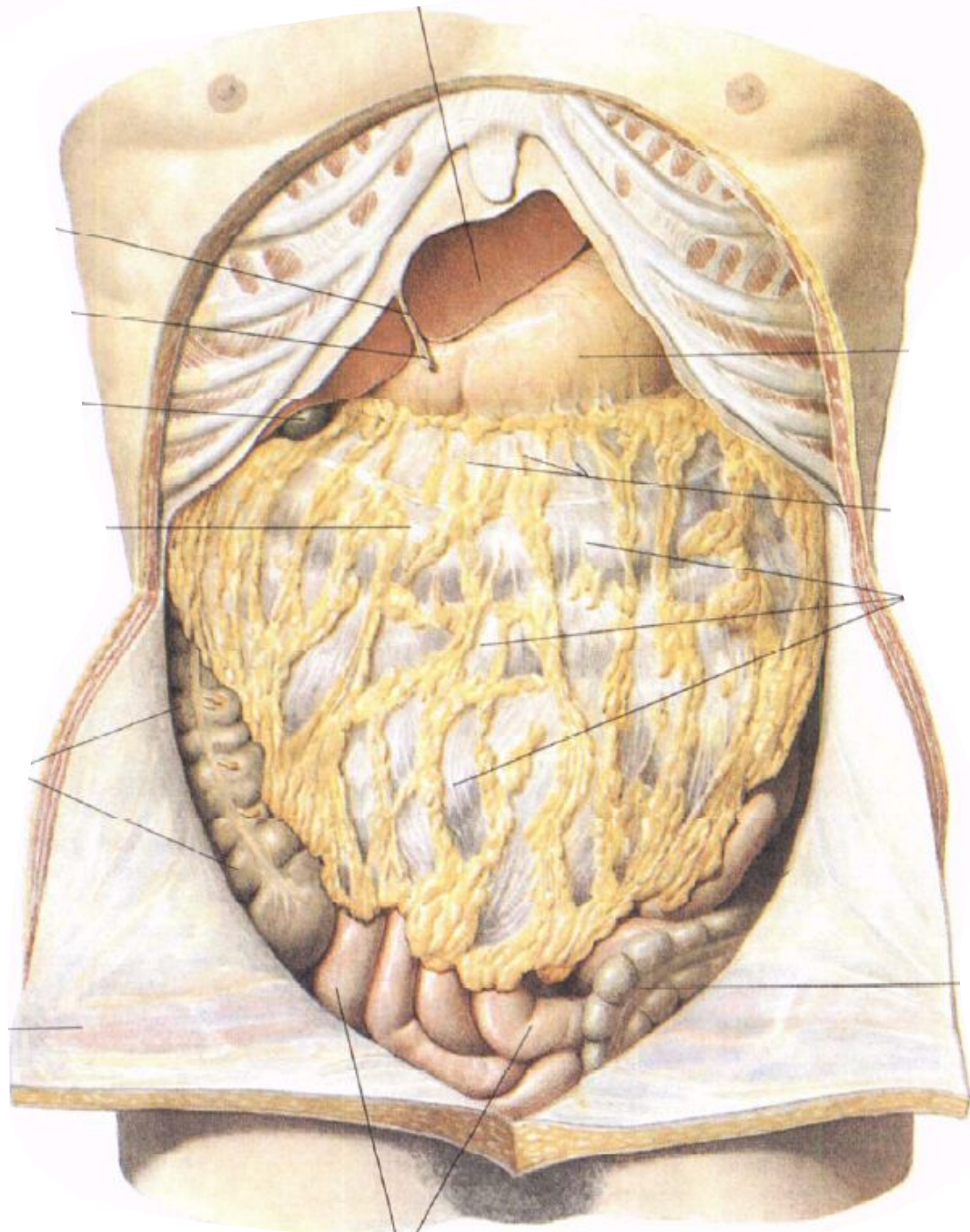




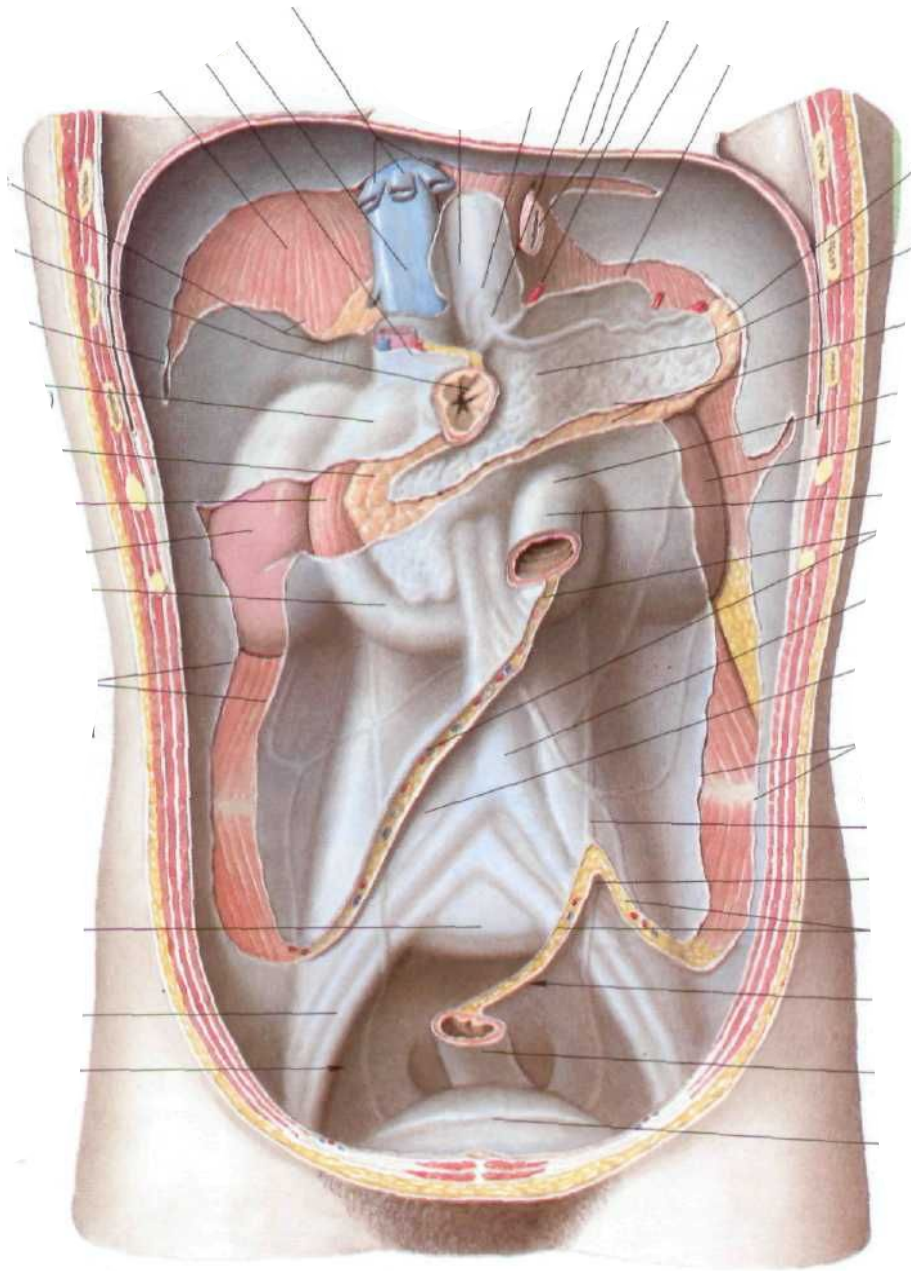
# Занятие №6

Брюшина. Производные брюшины.  
Топография брюшины верхнего этажа  
брюшной полости.

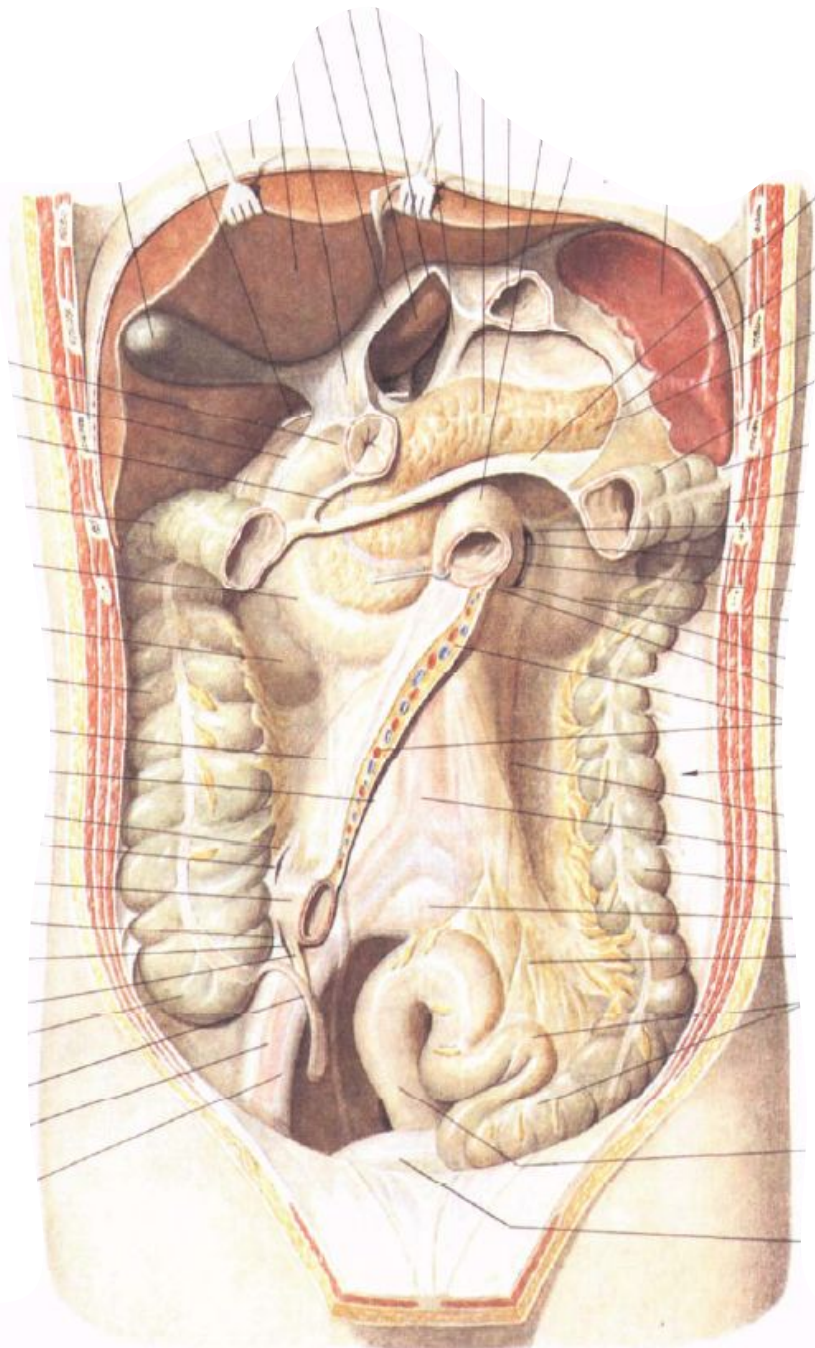


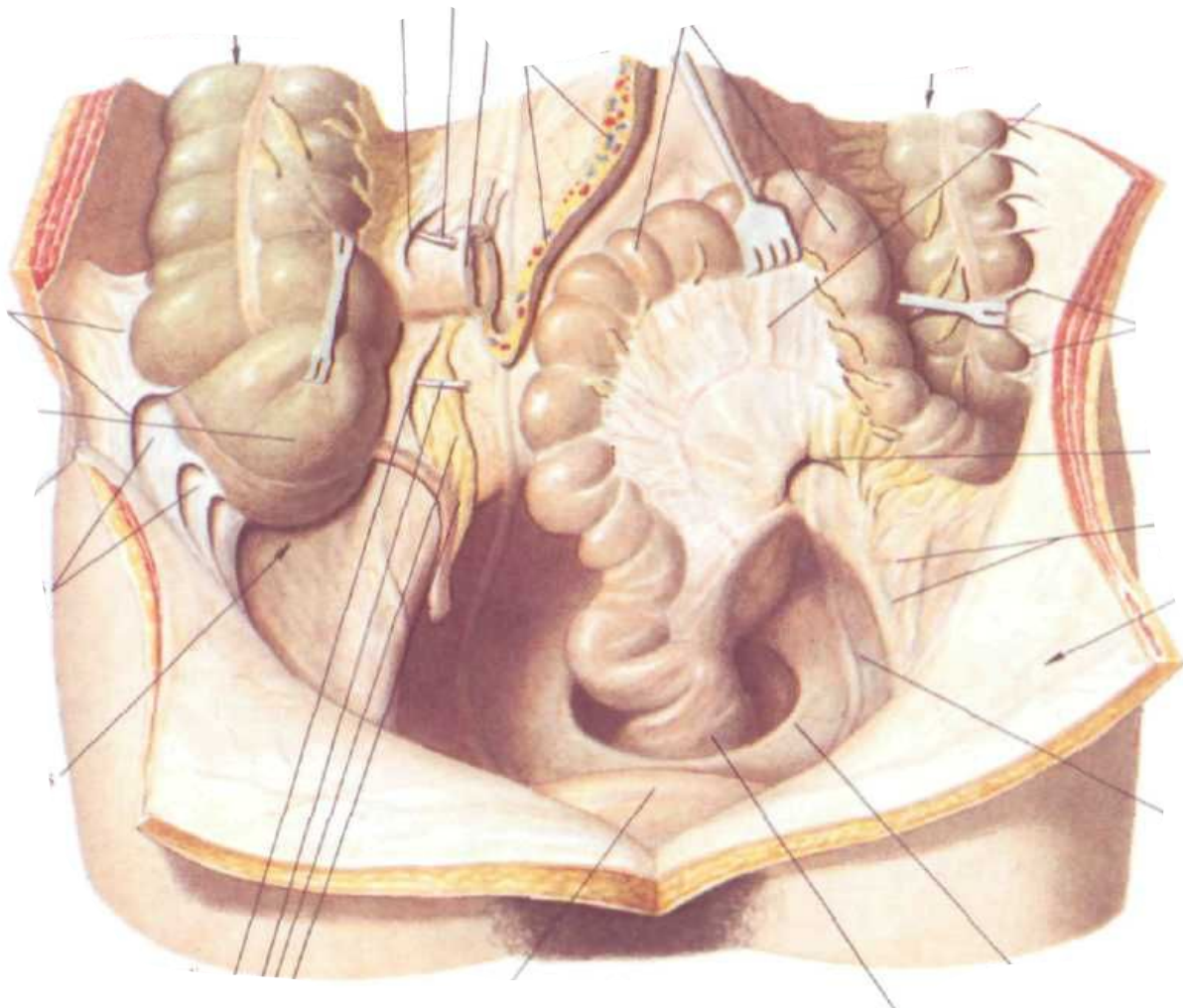


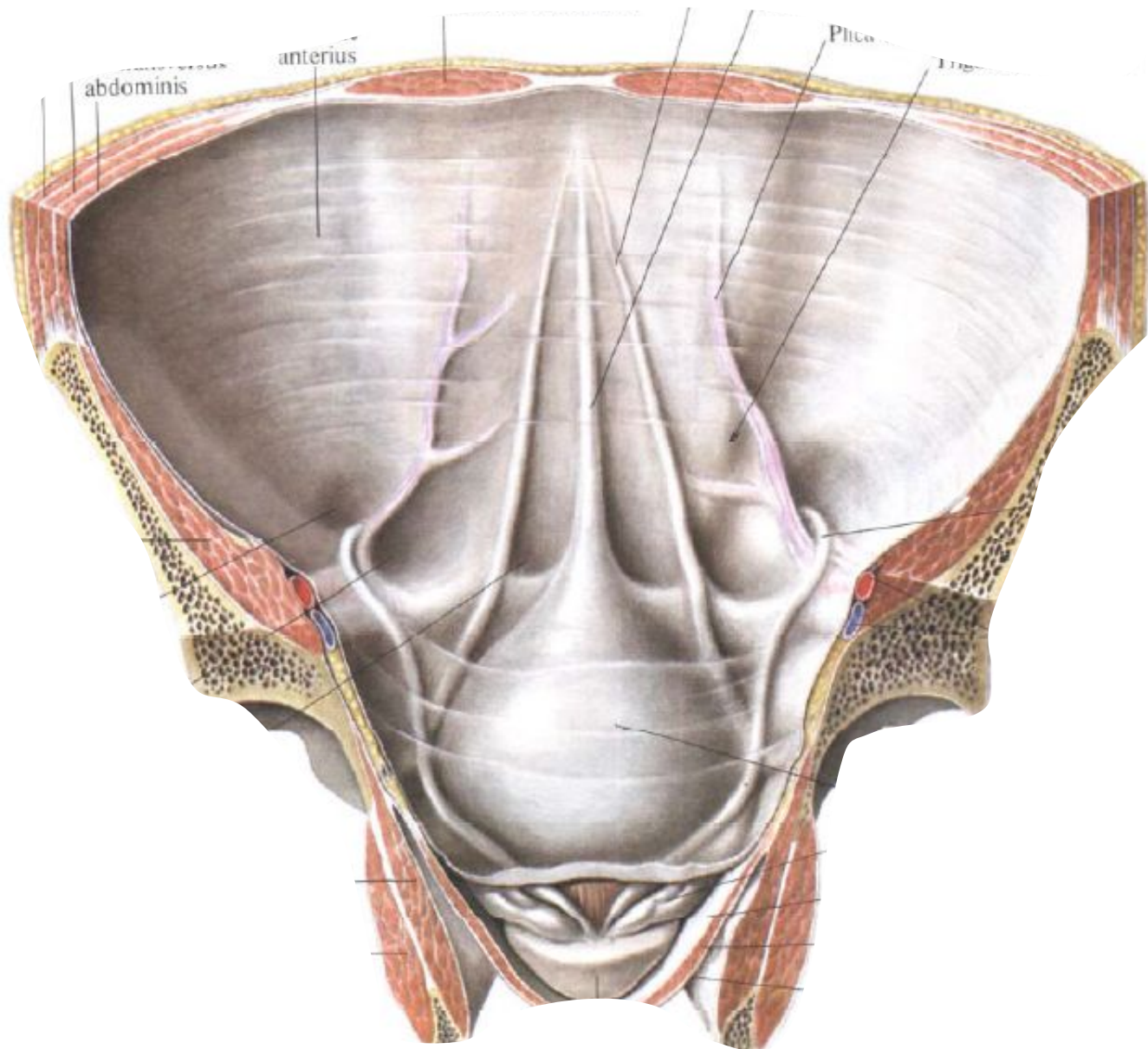




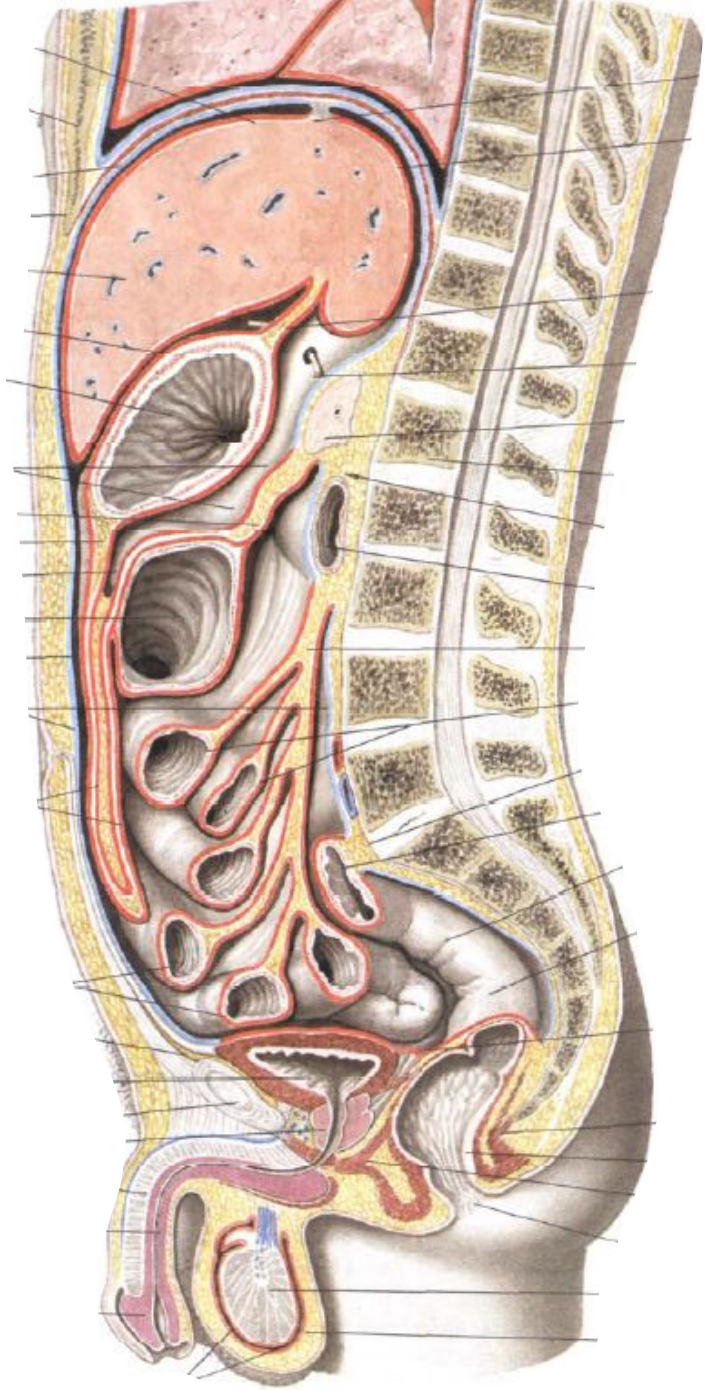




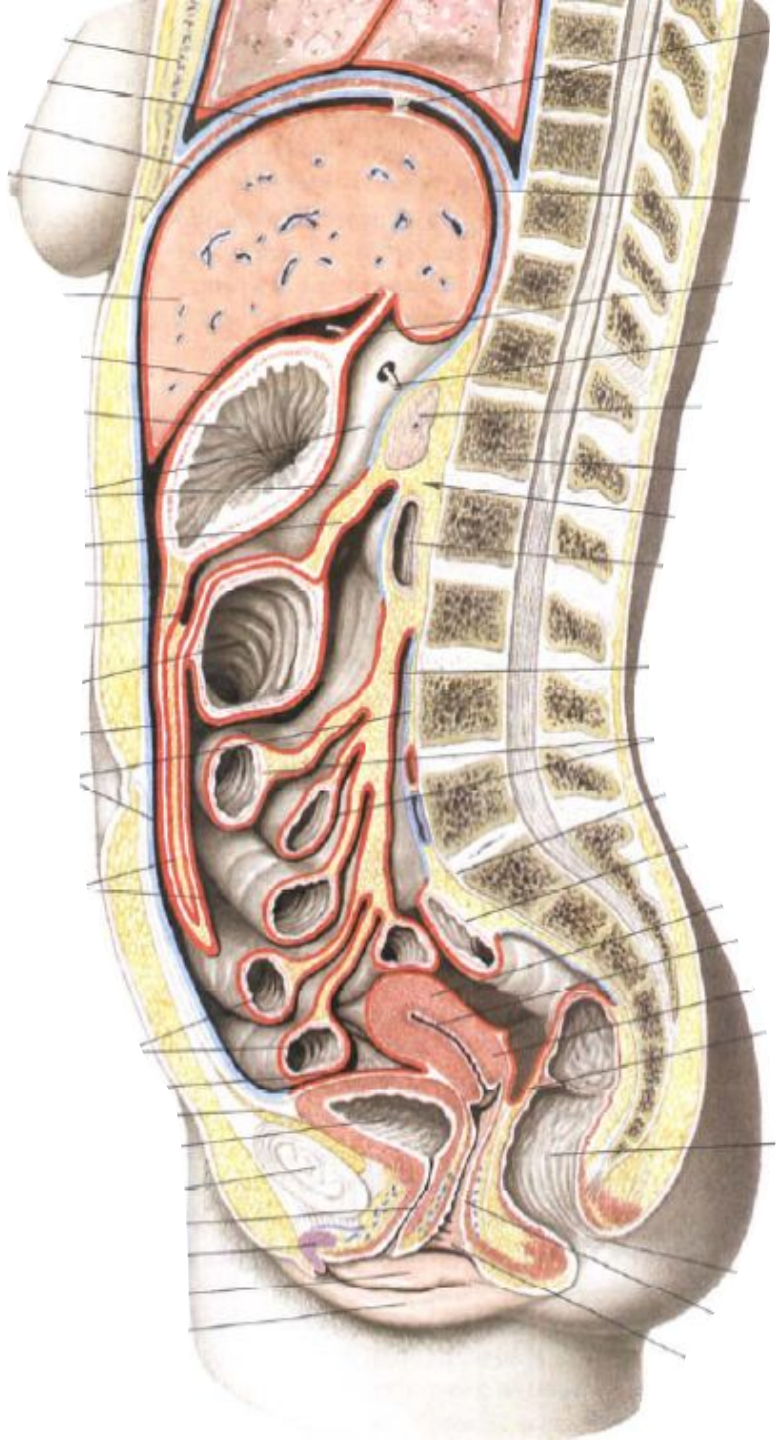










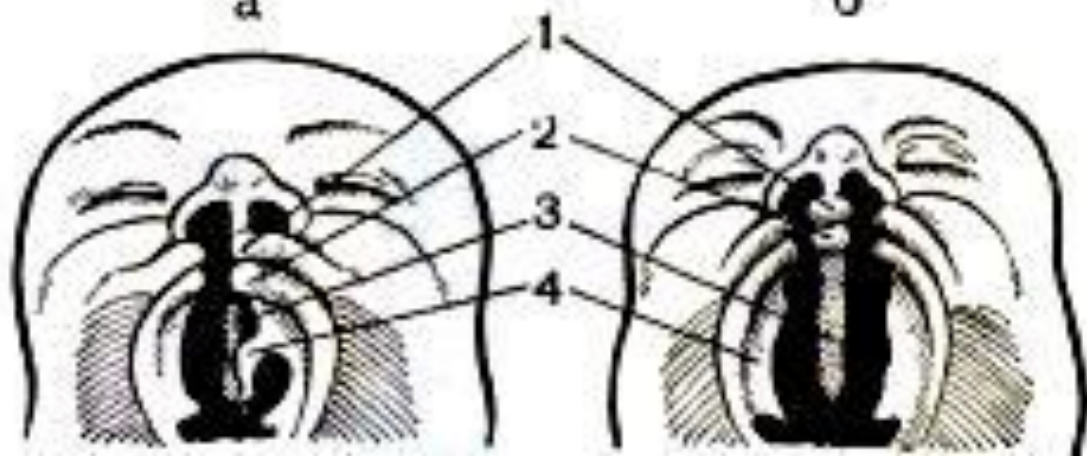




a



б





a



b



c



d



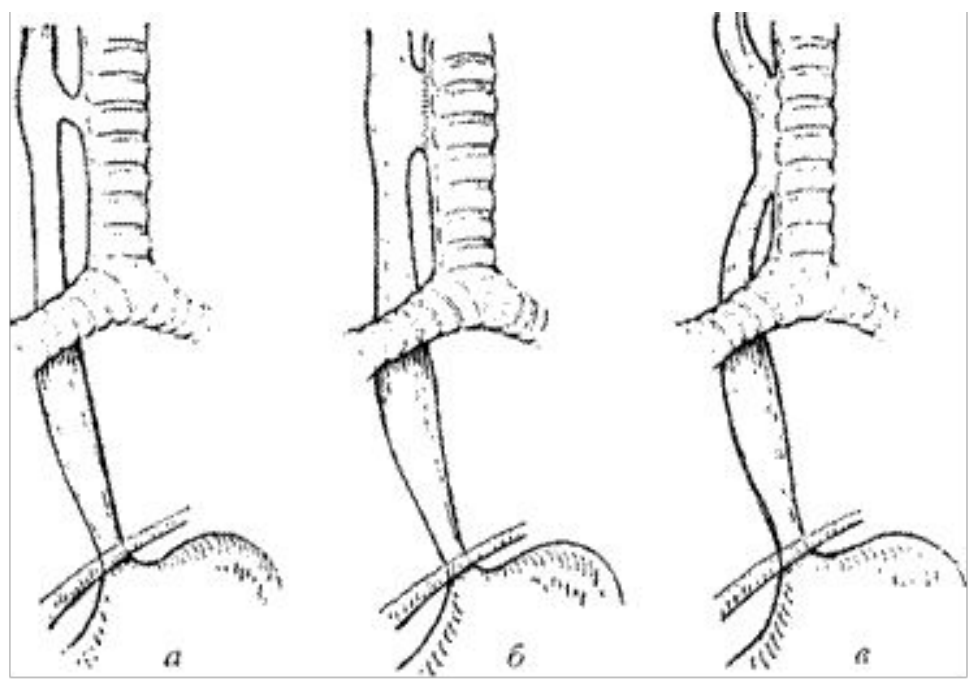
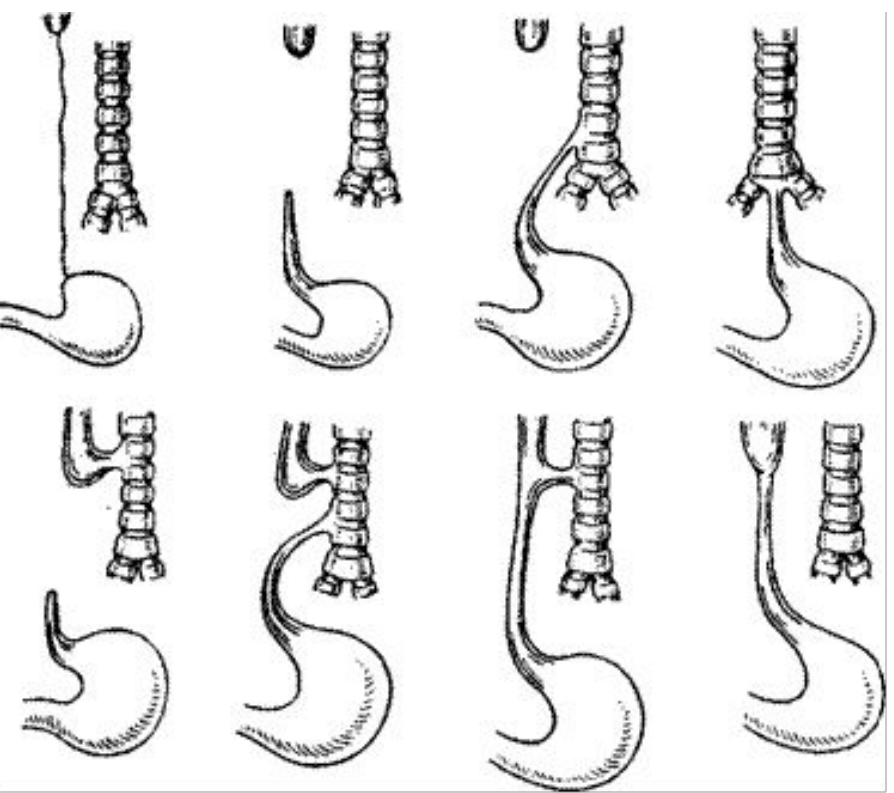
e



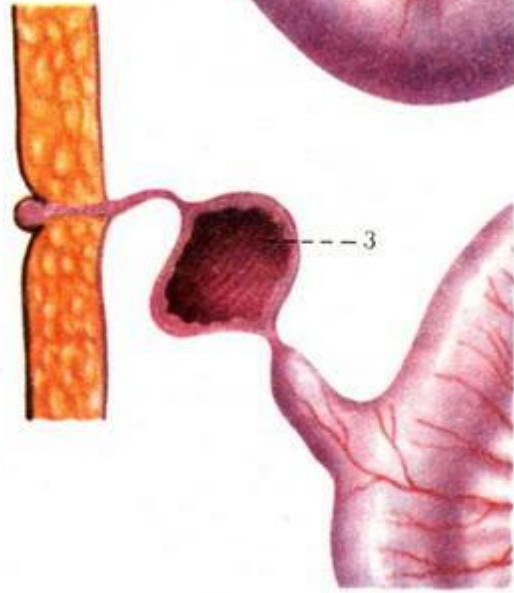
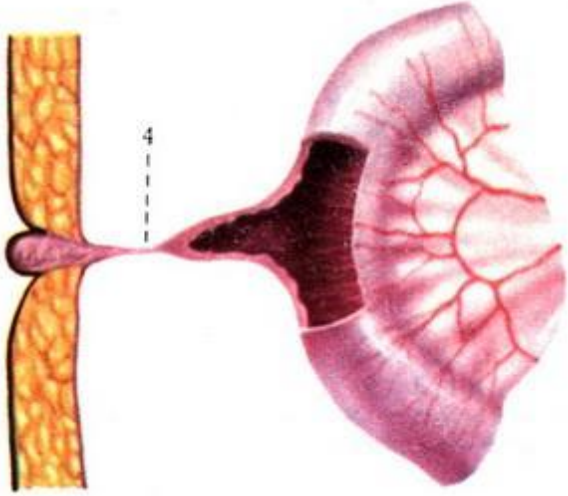
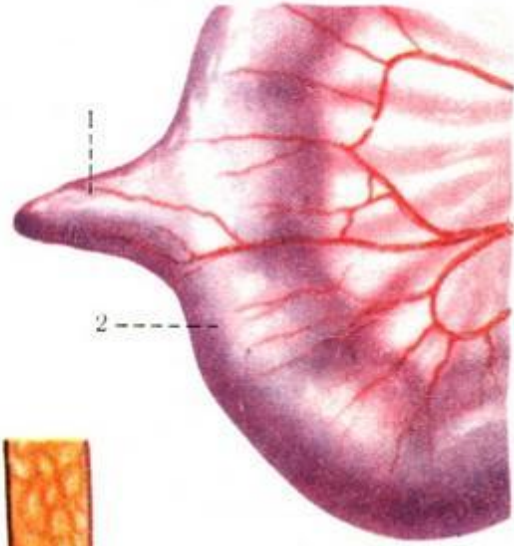
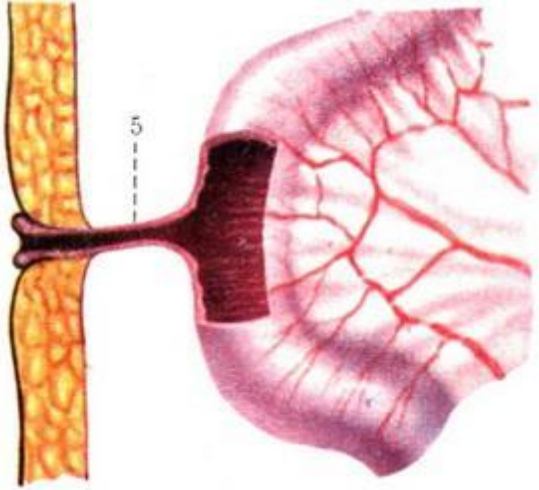
f



g









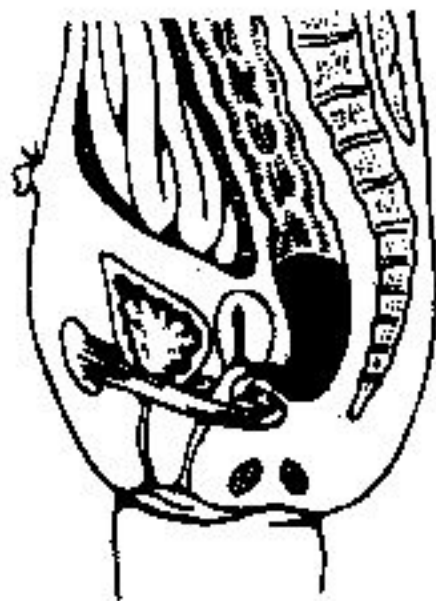
a



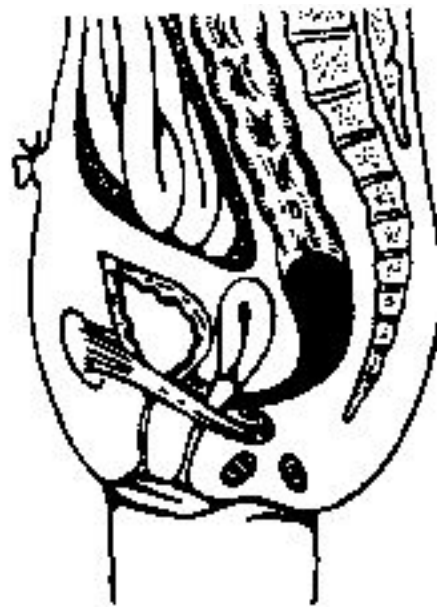
б



B



a



б



B