

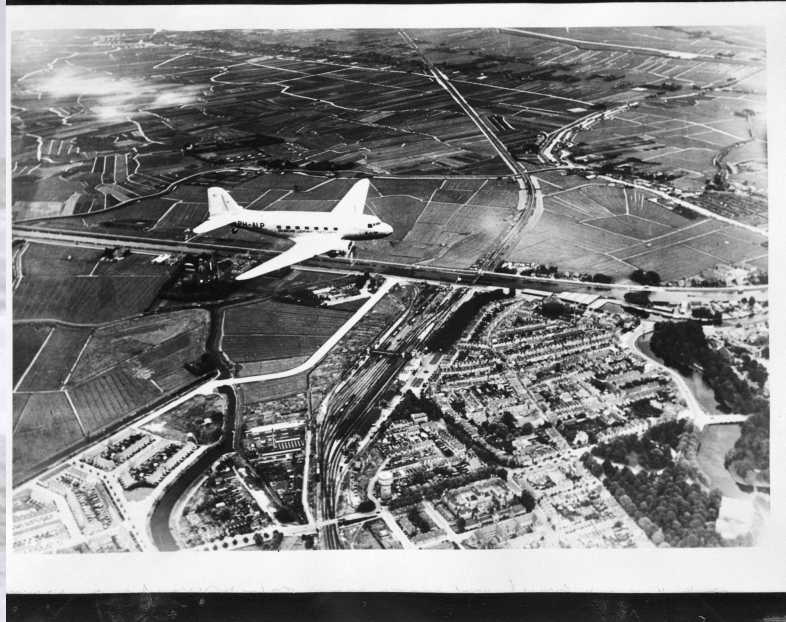


Douglas DC-3

Douglas' main competitor at the time, the Boeing Model 247



Douglas DC-3
Boeing weighed half less but had a high cruising speed and less fuel consumption.

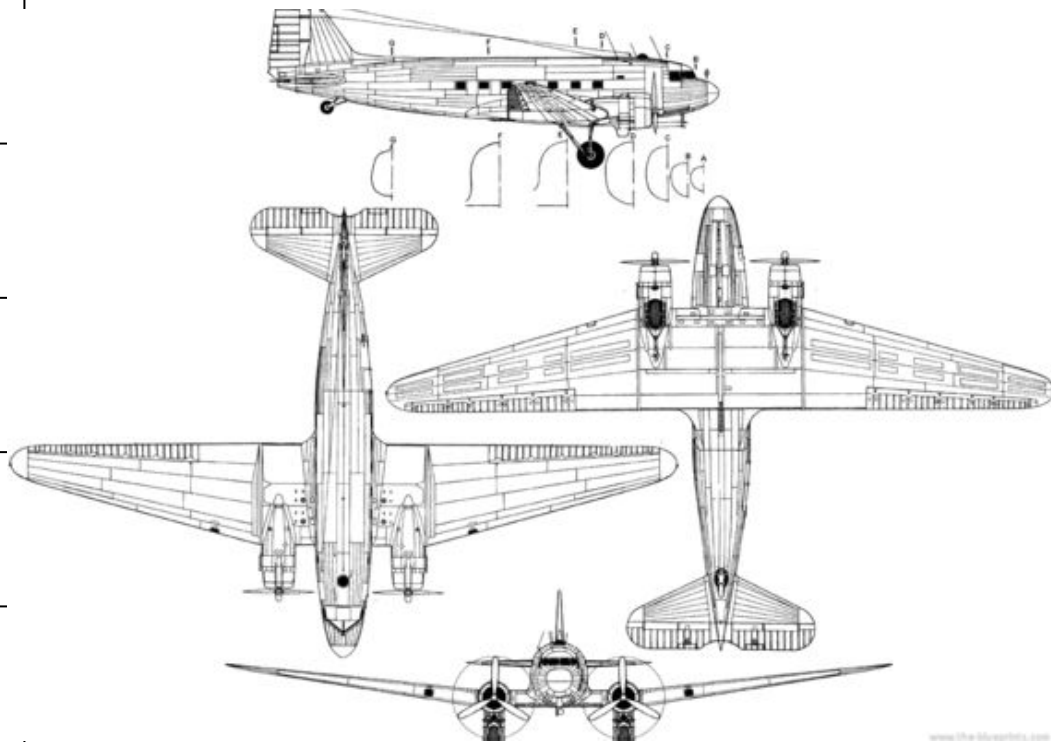


Models produced in
the 1930s and 40s

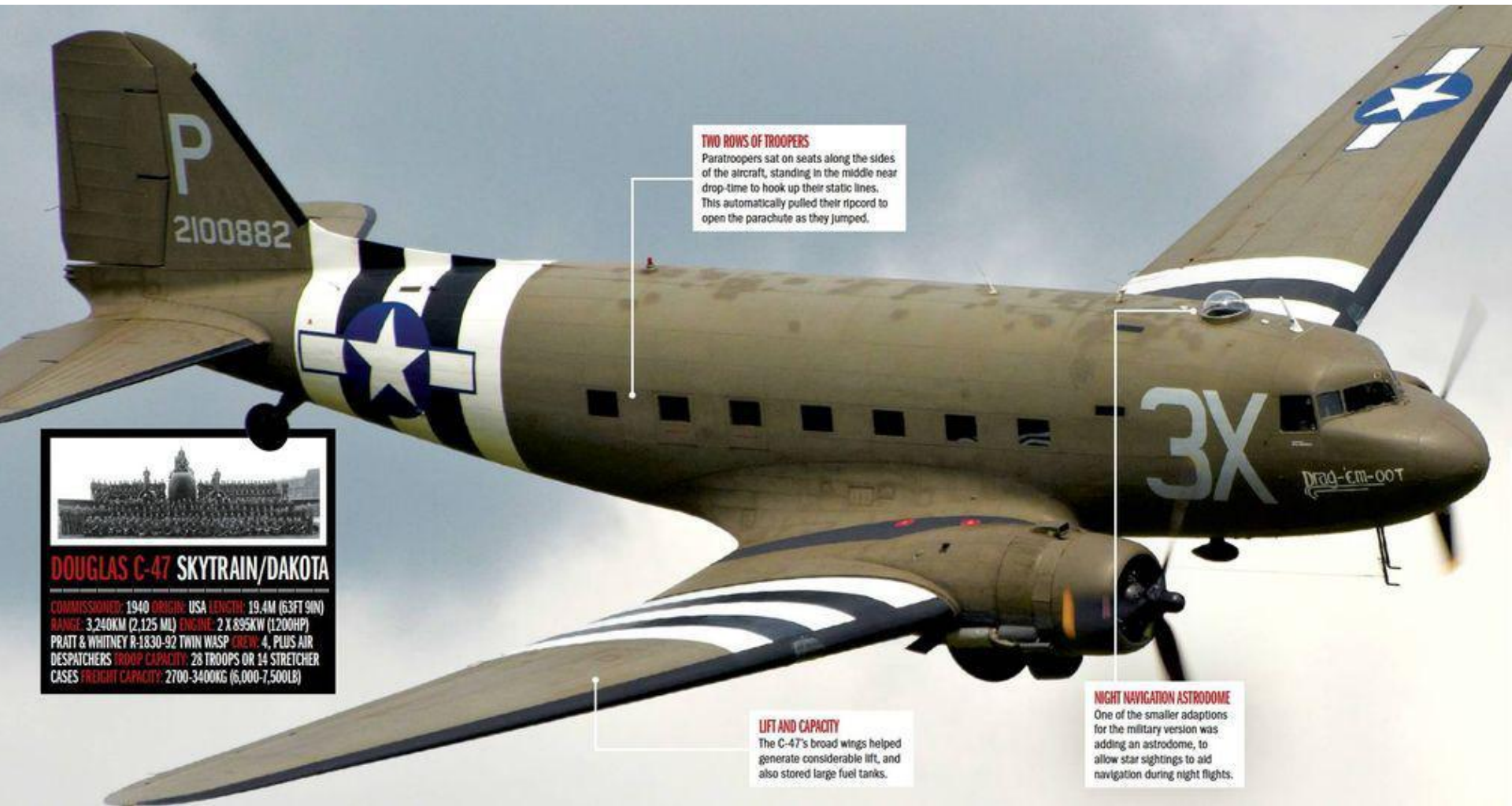


The performance characteristics of Douglas DC-3

Accommodations*	21-32 seats
Length	64 ft 8 in (19.7 m)
Height	16 ft 11 in (5.16 m)
Wingspan	95 ft 2 in (29.0 m)
Empty Weight	16,865 lb (7,650 kg)
Gross Weight	25,199 lb (11,430 kg)
Fuel Capacity	822 gal (3111 L)



Fuel Burn	100 gph (378 L)
Range	1,500 nm (2,778 km)
Cruise Speed	180 kts (333 km/h)
Max Cruise	200 kts (370 km/h)
Stall Speed	58.2 kts (108 km/h)
Climb Rate	1,130 fpm (5.7 m/s)
Service Ceiling	23,200 ft (7,100 m)



TWO ROWS OF TROOPERS

Paratroopers sat on seats along the sides of the aircraft, standing in the middle near drop-time to hook up their static lines. This automatically pulled their ripcord to open the parachute as they jumped.



DOUGLAS C-47 SKYTRAIN/DAKOTA

COMMISSIONED: 1940 ORIGIN: USA LENGTH: 19.4M (63FT 9IN)
RANGE: 3,240KM (2,125 MI) ENGINE: 2 X 895KW (1,200HP)
PRATT & WHITNEY R-1830-92 TWIN WASP CREW: 4, PLUS AIR
DESPATCHERS TROOP CAPACITY: 28 TROOPS OR 14 STRETCHER
CASES WEIGHT CAPACITY: 2,700-3,400KG (6,000-7,500LB)

LIFT AND CAPACITY

The C-47's broad wings helped generate considerable lift, and also stored large fuel tanks.

NIGHT NAVIGATION ASTRODOME

One of the smaller adaptations for the military version was adding an astrodome, to allow star sightings to aid navigation during night flights.

Thank you for your attention.