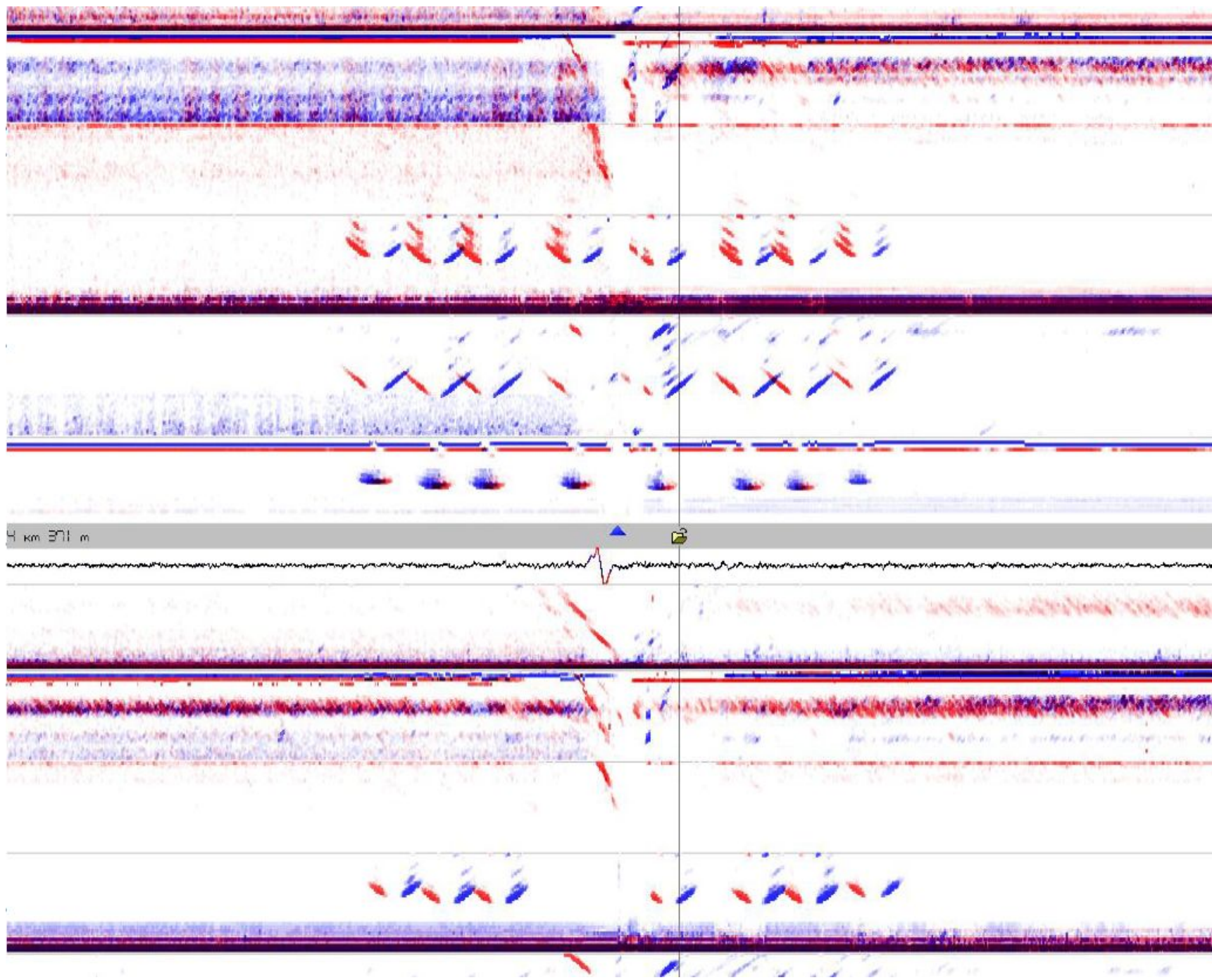
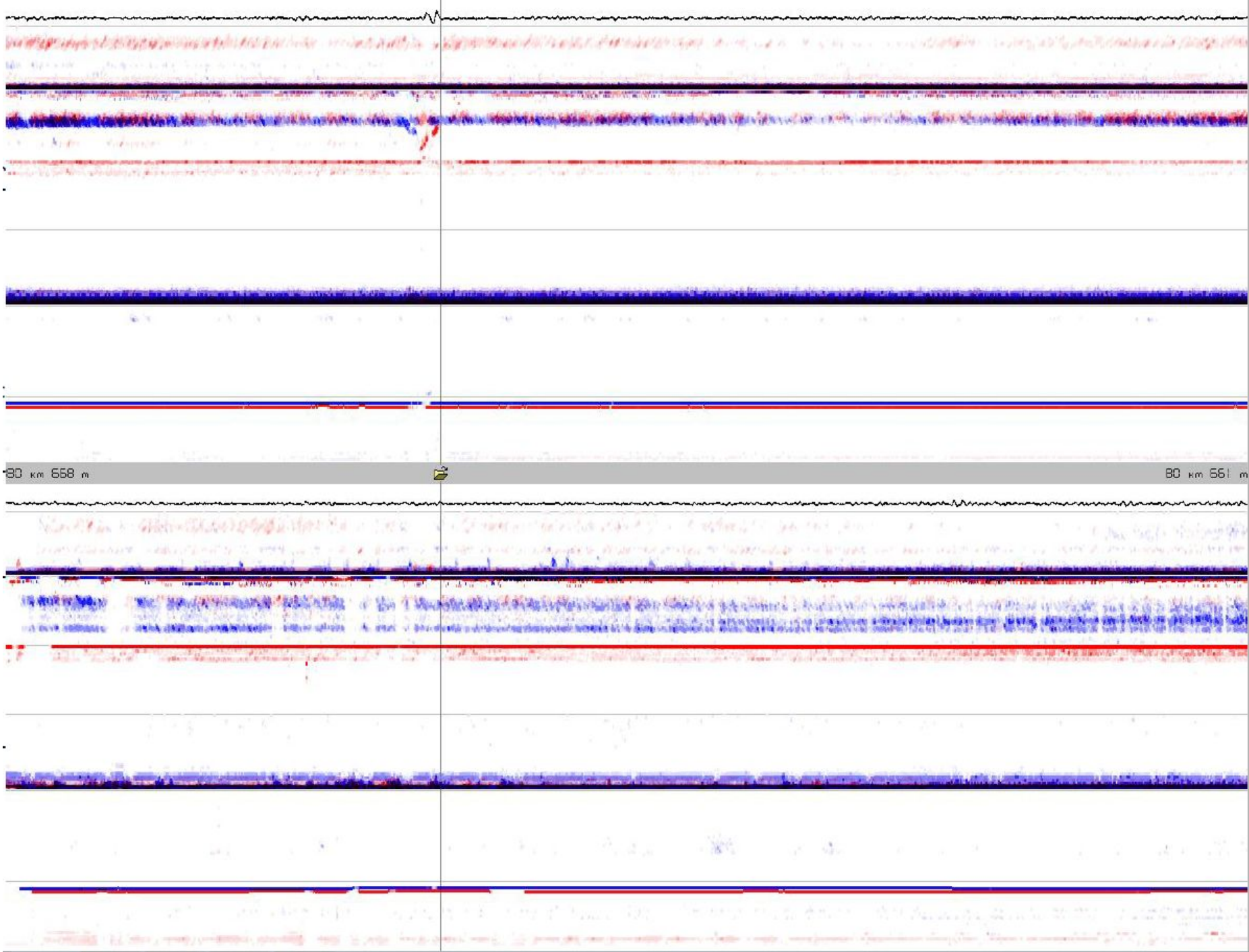


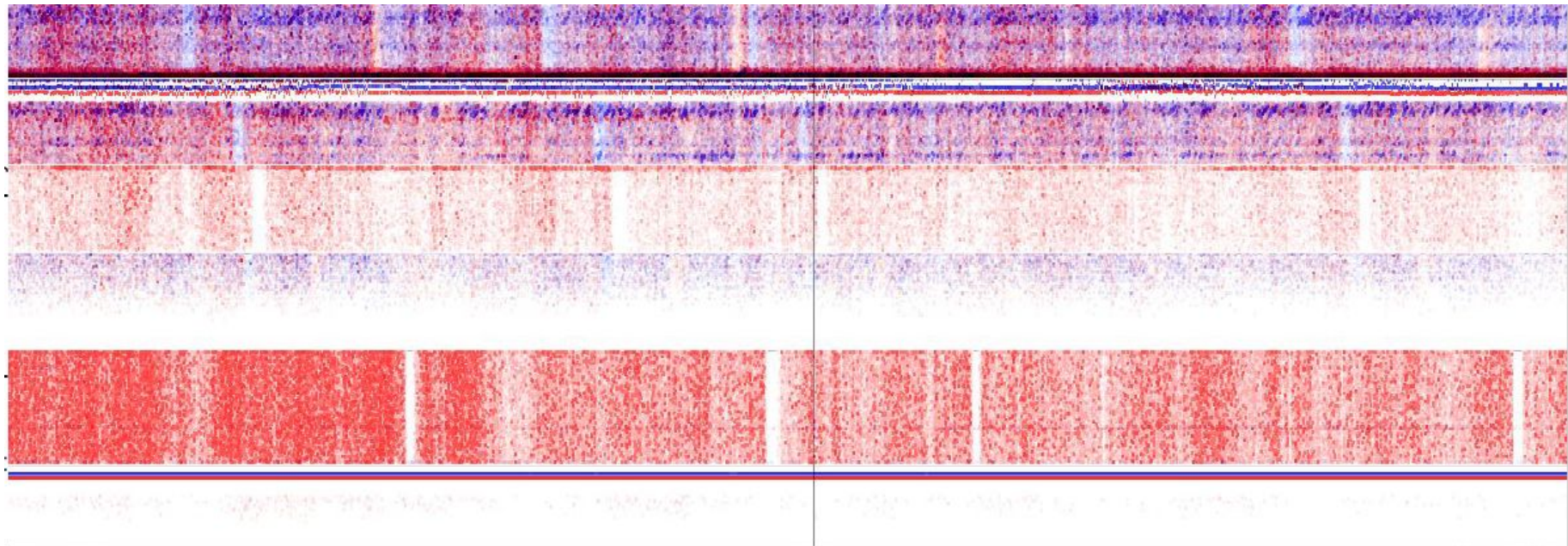
Задания для семинара по выявлению ОДР

Мобильные средства

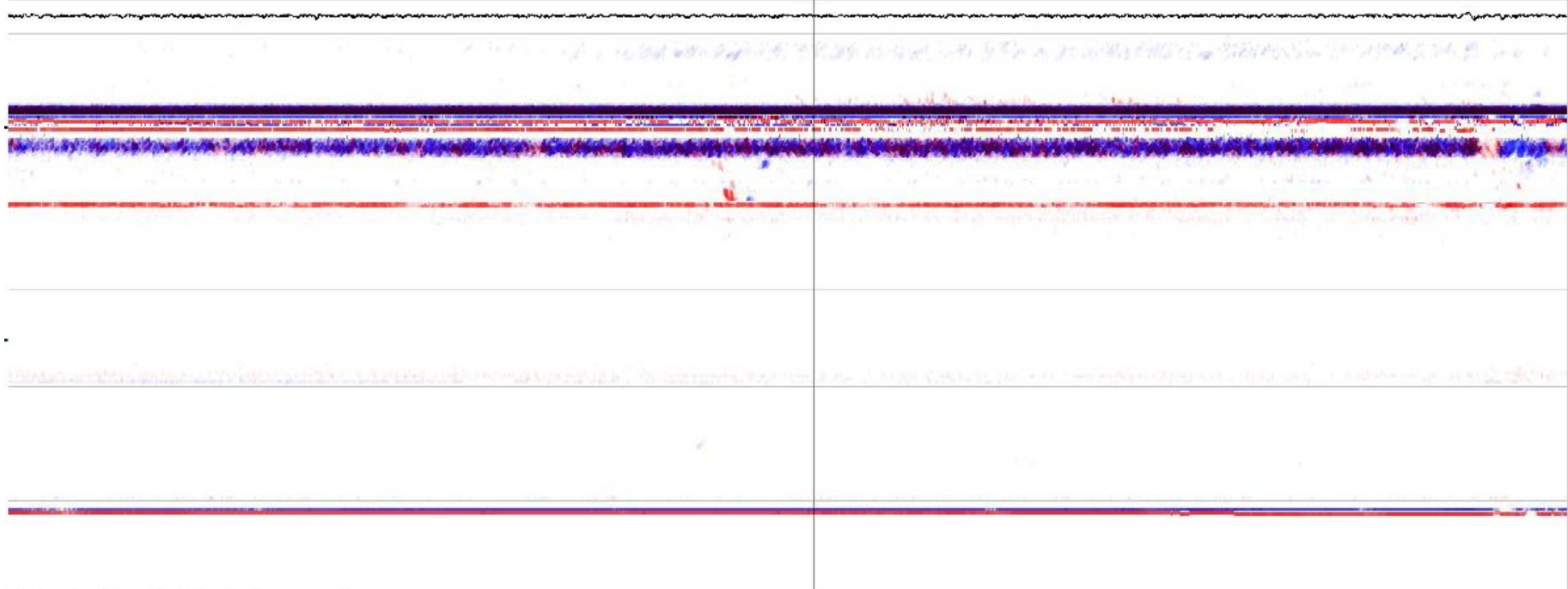
Круз и чуть-чуть Авикон-03

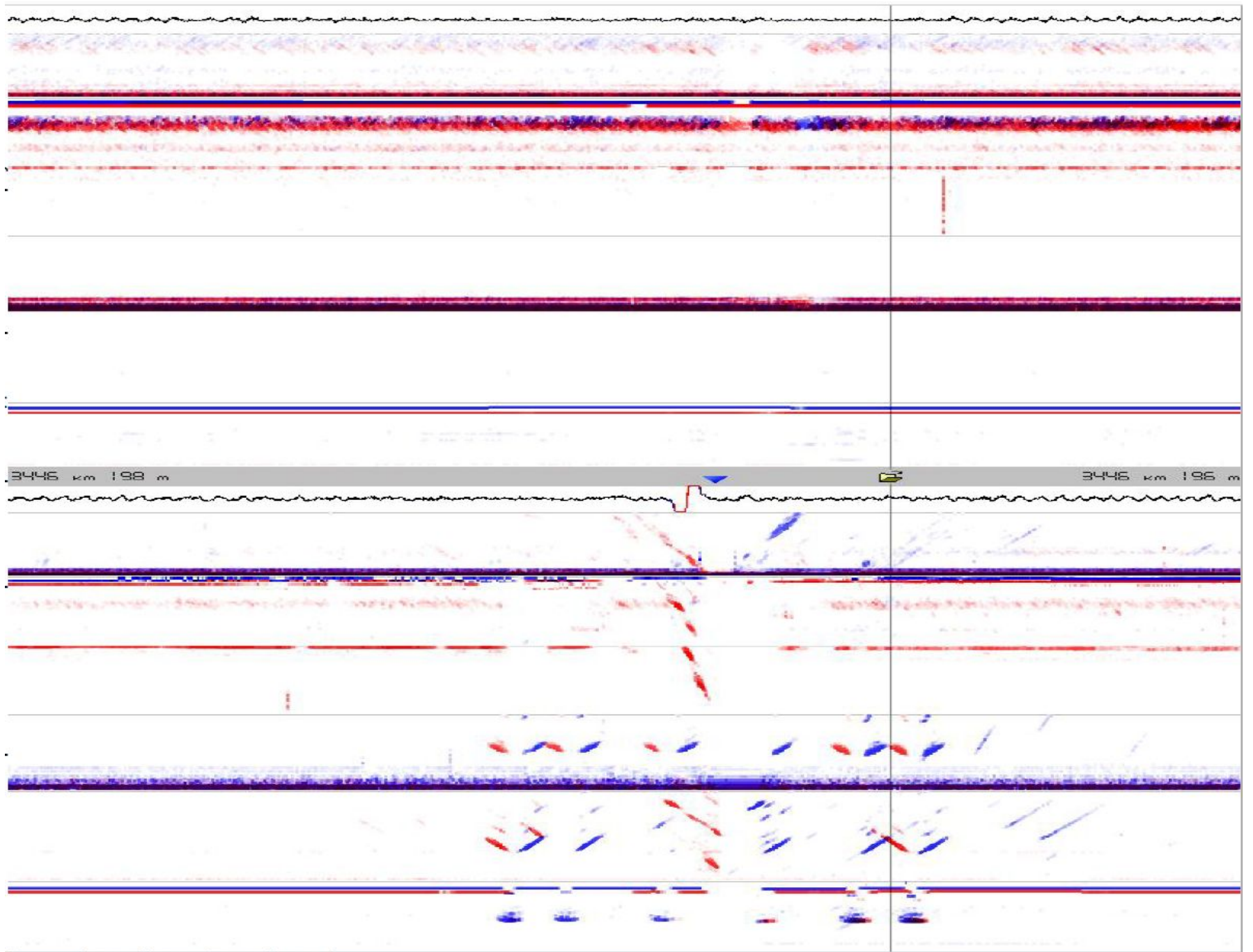




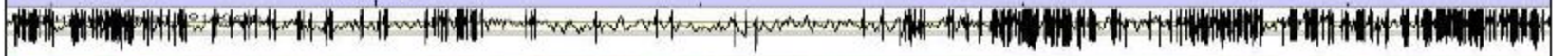


80 km 575 m  80 km 571 m





145,000



№9, 0°, 0° Kyne

№7, 57°, 34° Kyne
№8, 58°, 34° Kyne

№3, 60°, 14° Kyne
№4, 68°, 14° Kyne

№2, 69°, 0° Kyne
№5, 70°, 0° Kyne

№1, 41°, 0° Kyne
№6, 48°, 0° Kyne

№10, 41°, 0° Kop.
№15, 42°, 0° Kop.

№12, 70°, 14° Kop.
№13, 70°, 14° Kop.

№11, 58°, 0° Kop.
№14, 59°, 0° Kop.

№16, 57°, 34° Kop.
№17, 58°, 34° Kop.

№18, 0°, 0° Kop.

Магнитный канал №1, КСР



№7, 57°, 34° Купе
№6, 58°, 34° Купе

№3, 69°, 14° Купе
№4, 68°, 14° Купе

№2, 69°, 0° Купе
№5, 70°, 0° Купе

№1, 41°, 0° Купе
№8, 42°, 0° Купе

№9, 0°, 0° Купе

Магнитный канал №1 Купе

№16, 57°, 34° Коп.
№17, 58°, 34° Коп.

№12, 70°, 14° Коп.
№13, 70°, 14° Коп.

№11, 69°, 0° Коп.
№14, 69°, 0° Коп.

№10, 41°, 0° Коп.
№15, 38°, 0° Коп.

№18, 0°, 0° Коп.

Management Plan for N90s Kyne

N97, 50°, 34° Kyne

N98, 50°, 34° Kyne

N92, 70°, 0° Kyne

N95, 70°, 0° Kyne

N93, 69°, 14° Kyne

N94, 69°, 14° Kyne

N99, 0°, 0° Kyne

N91, 40°, 0° Kyne

N96, 40°, 0° Kyne

N910, 40°, 0° Kop.

N915, 58°, 0° Kop.

N918, 0°, 0° Kop.

N912, 70°, 14° Kop.

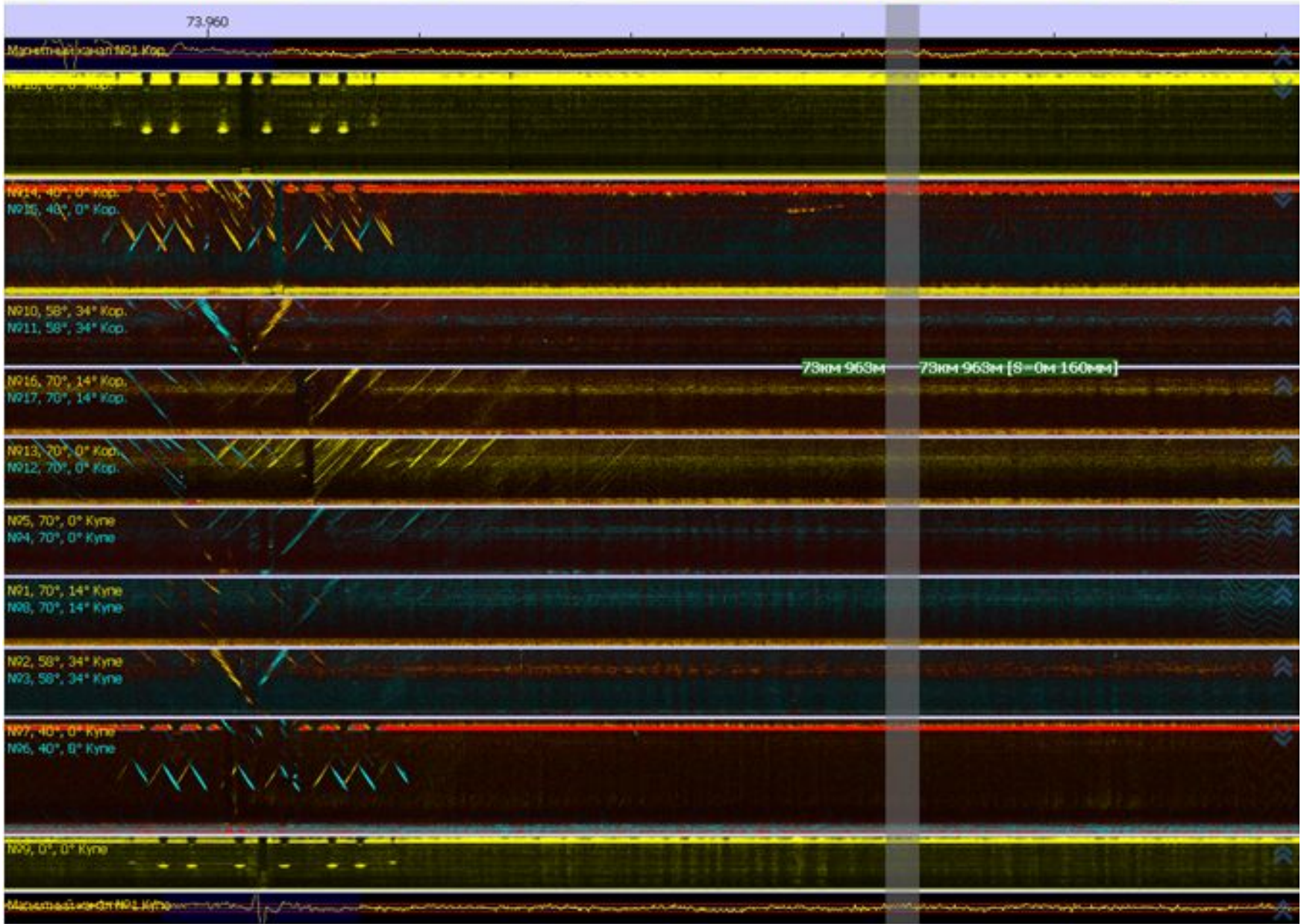
N913, 69°, 14° Kop.

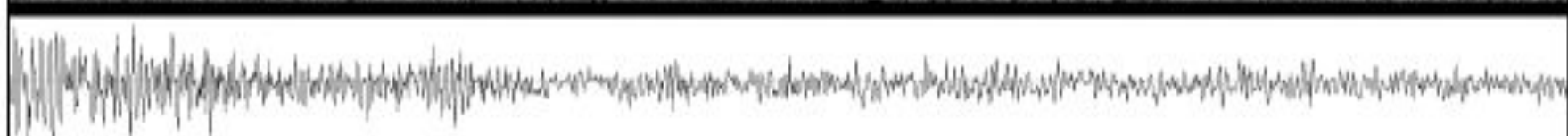
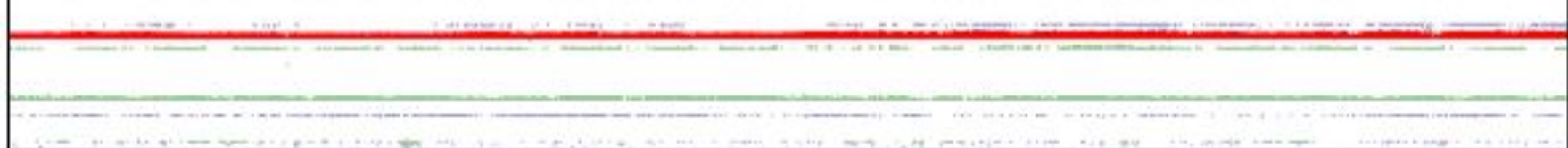
N911, 68°, 0° Kop.

N914, 69°, 0° Kop.

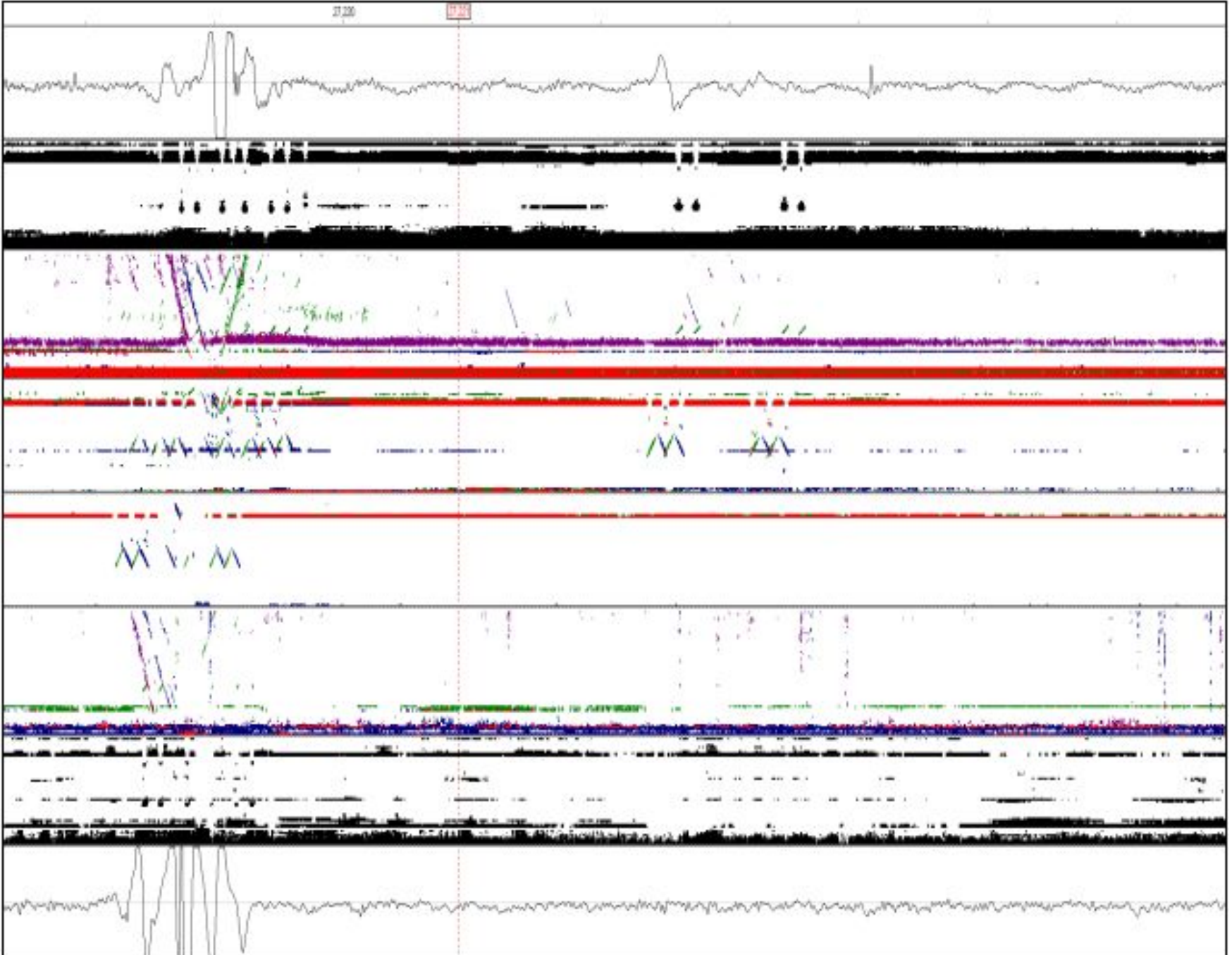
N917, 58°, 34° Kop.

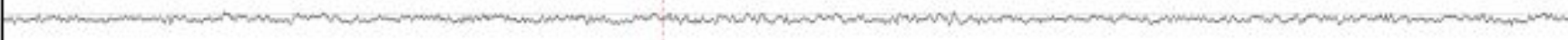
N916, 57°, 34° Kop.

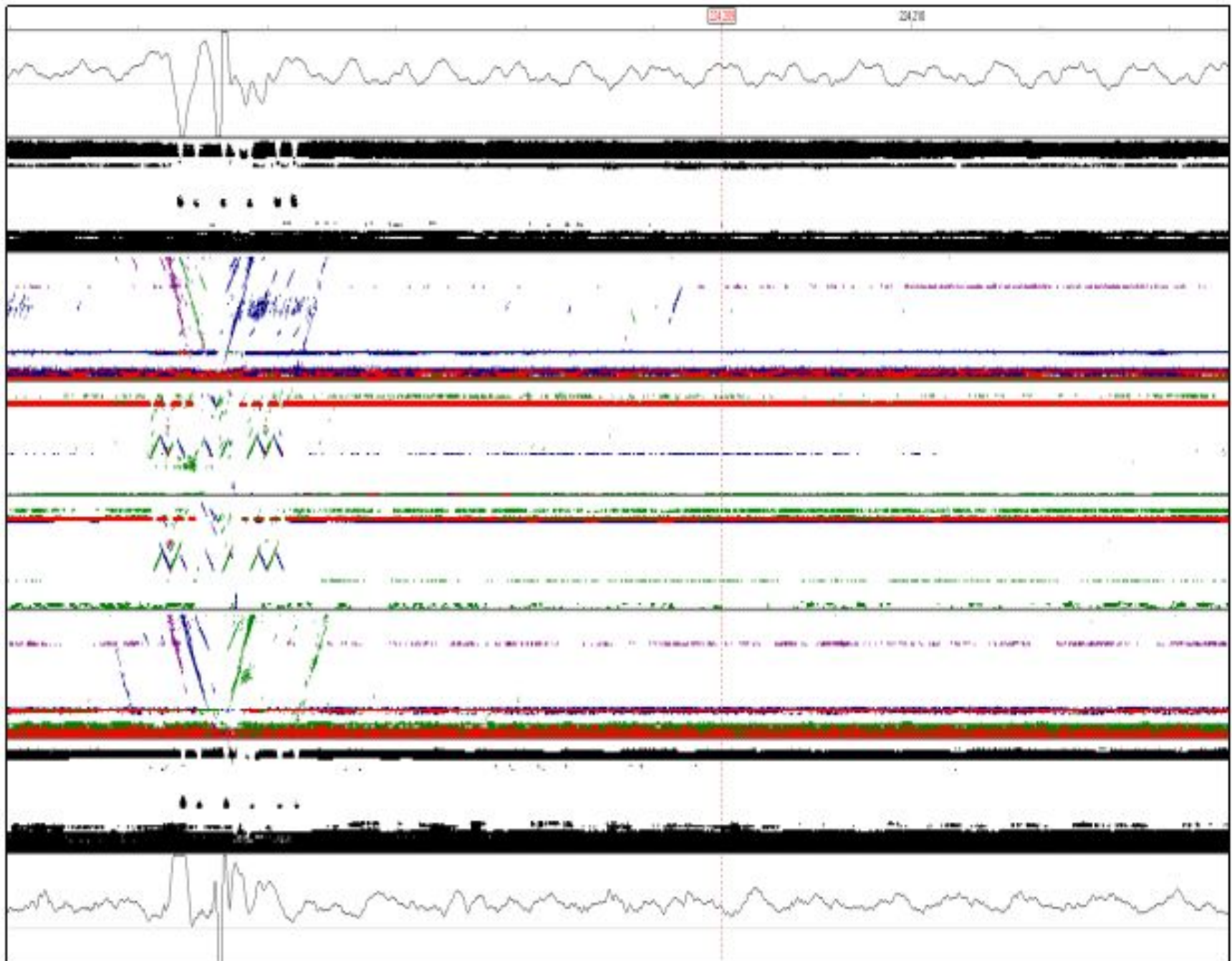


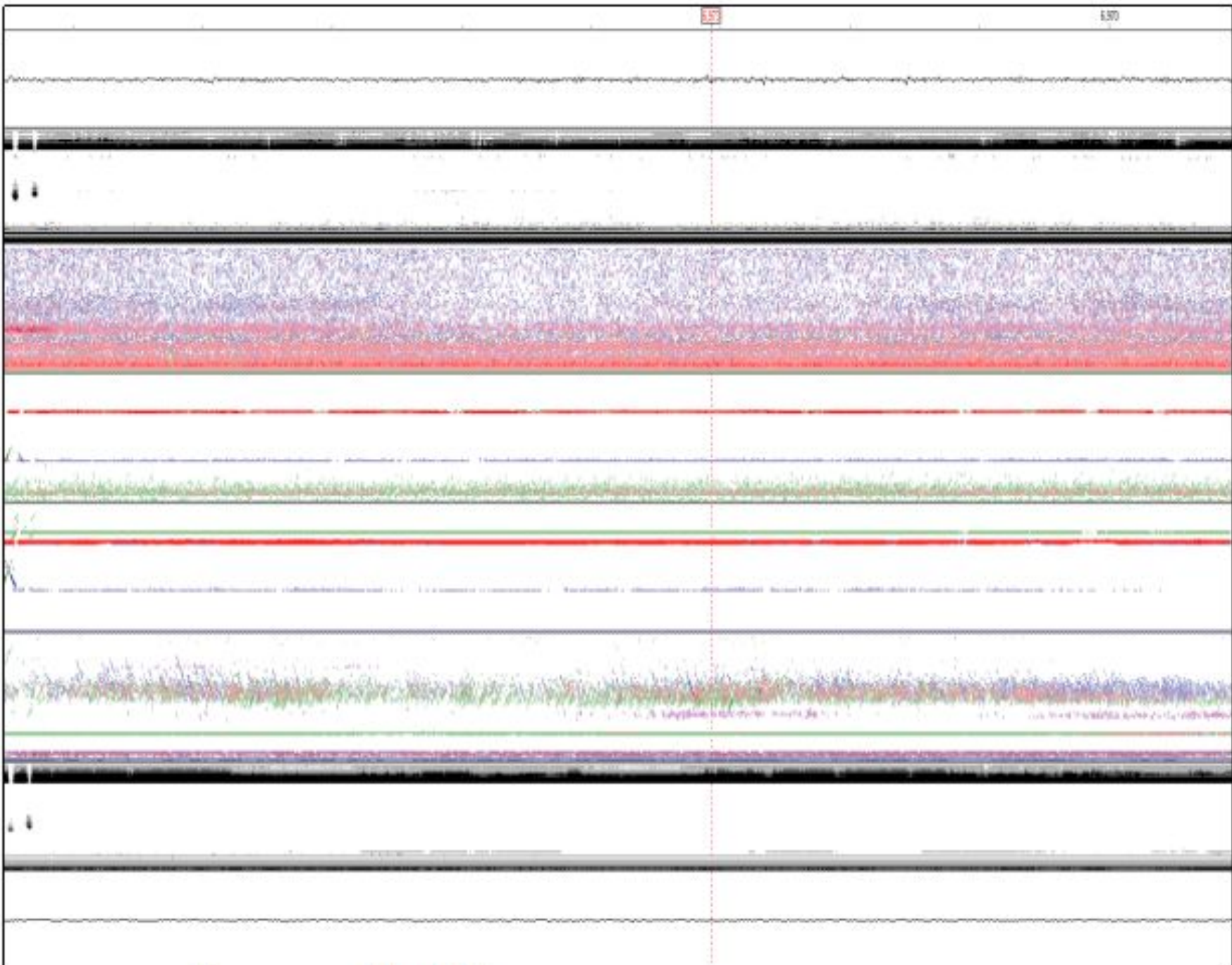






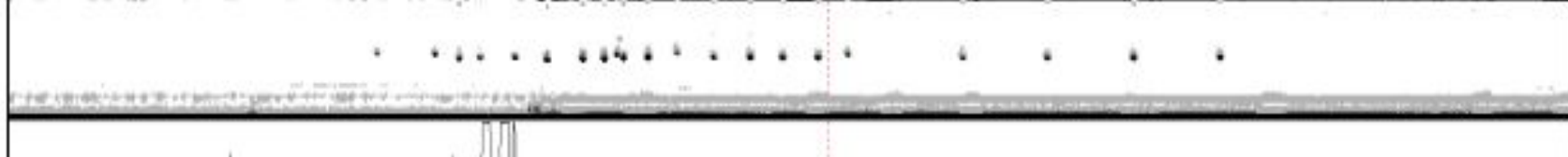
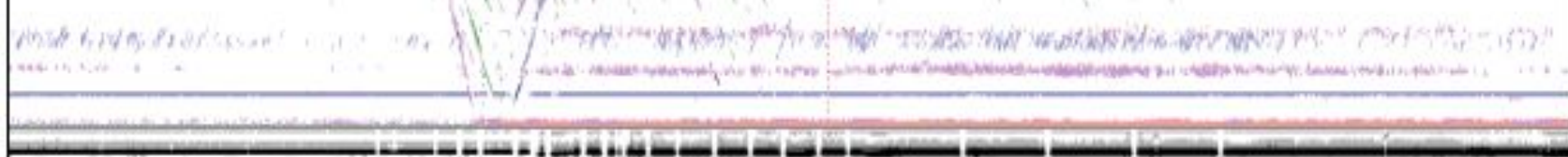
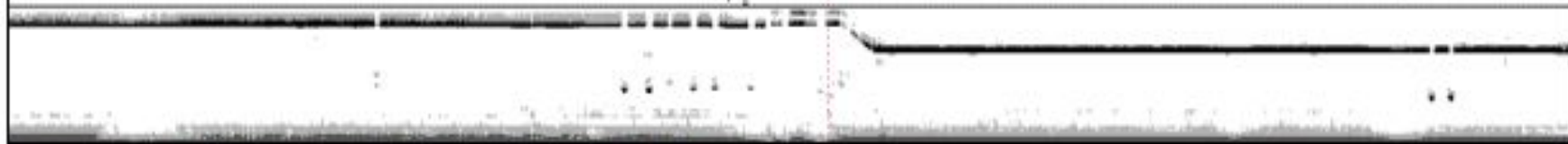
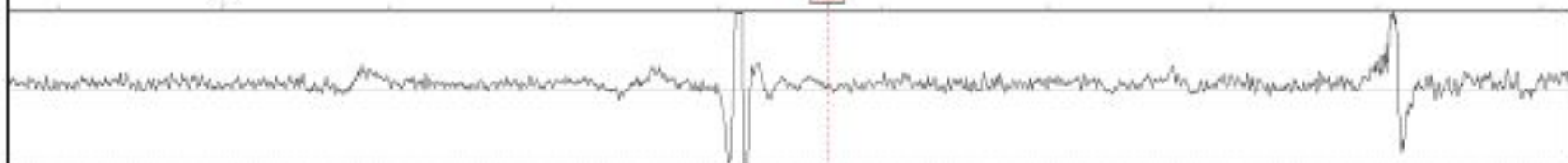


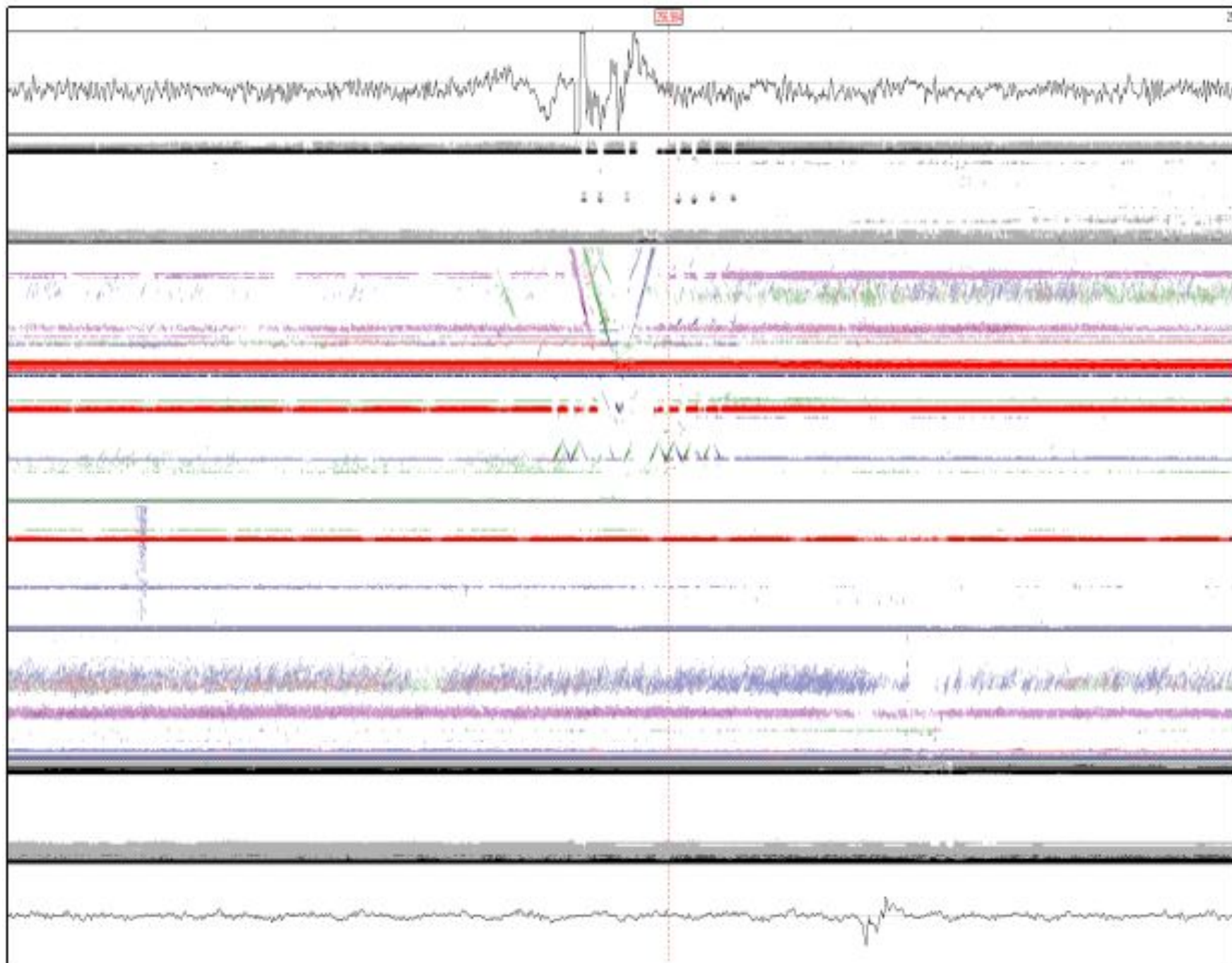


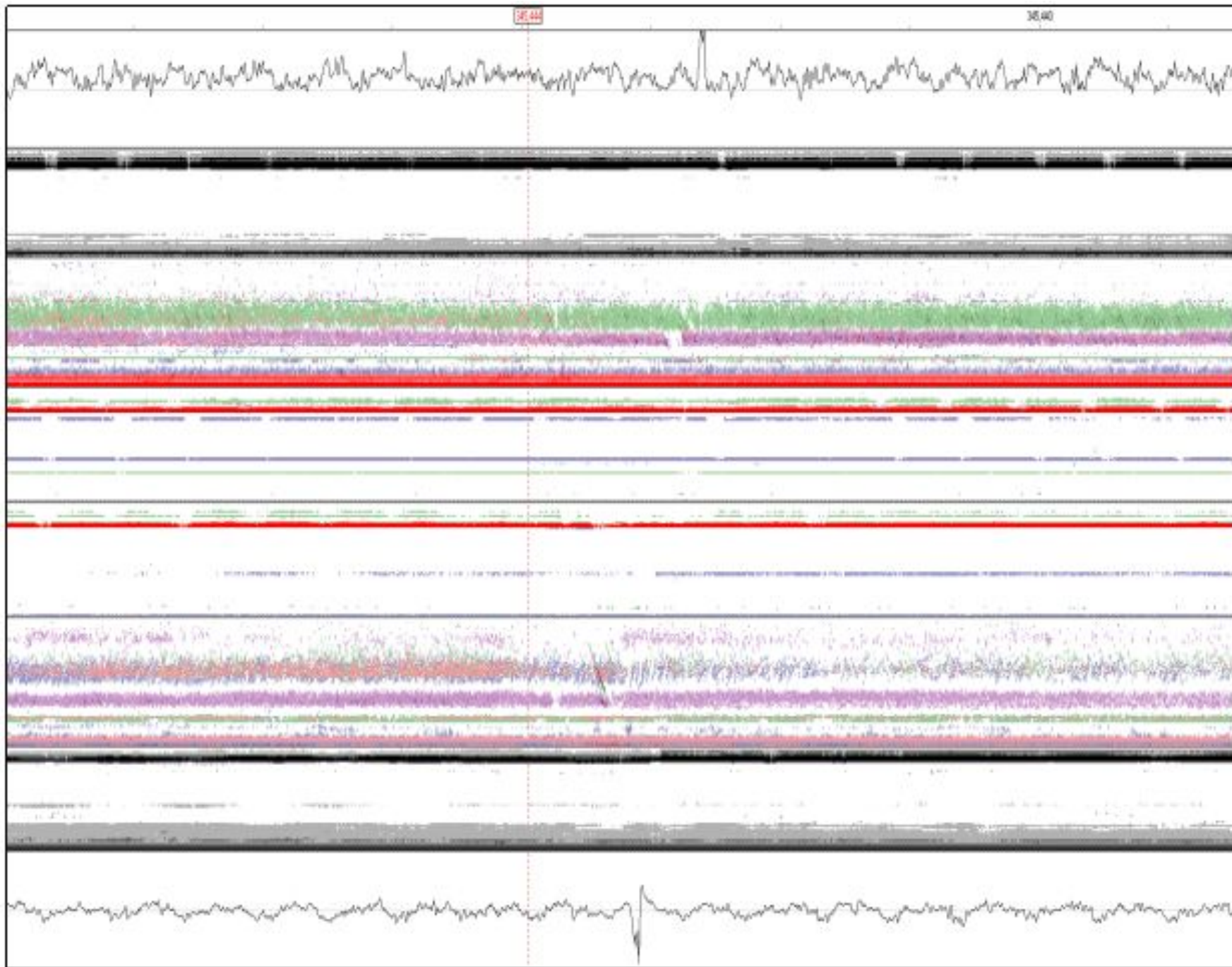


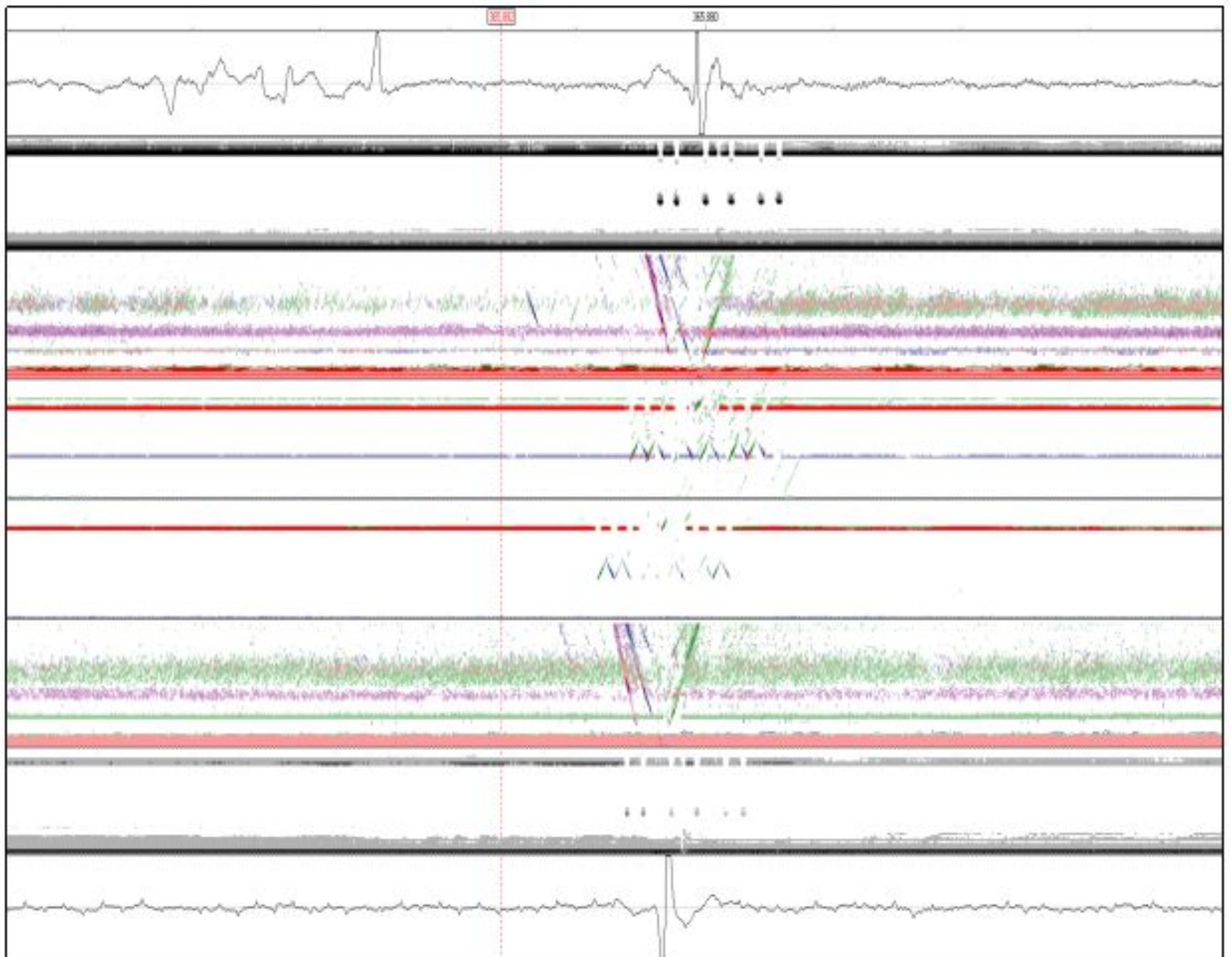
10:30

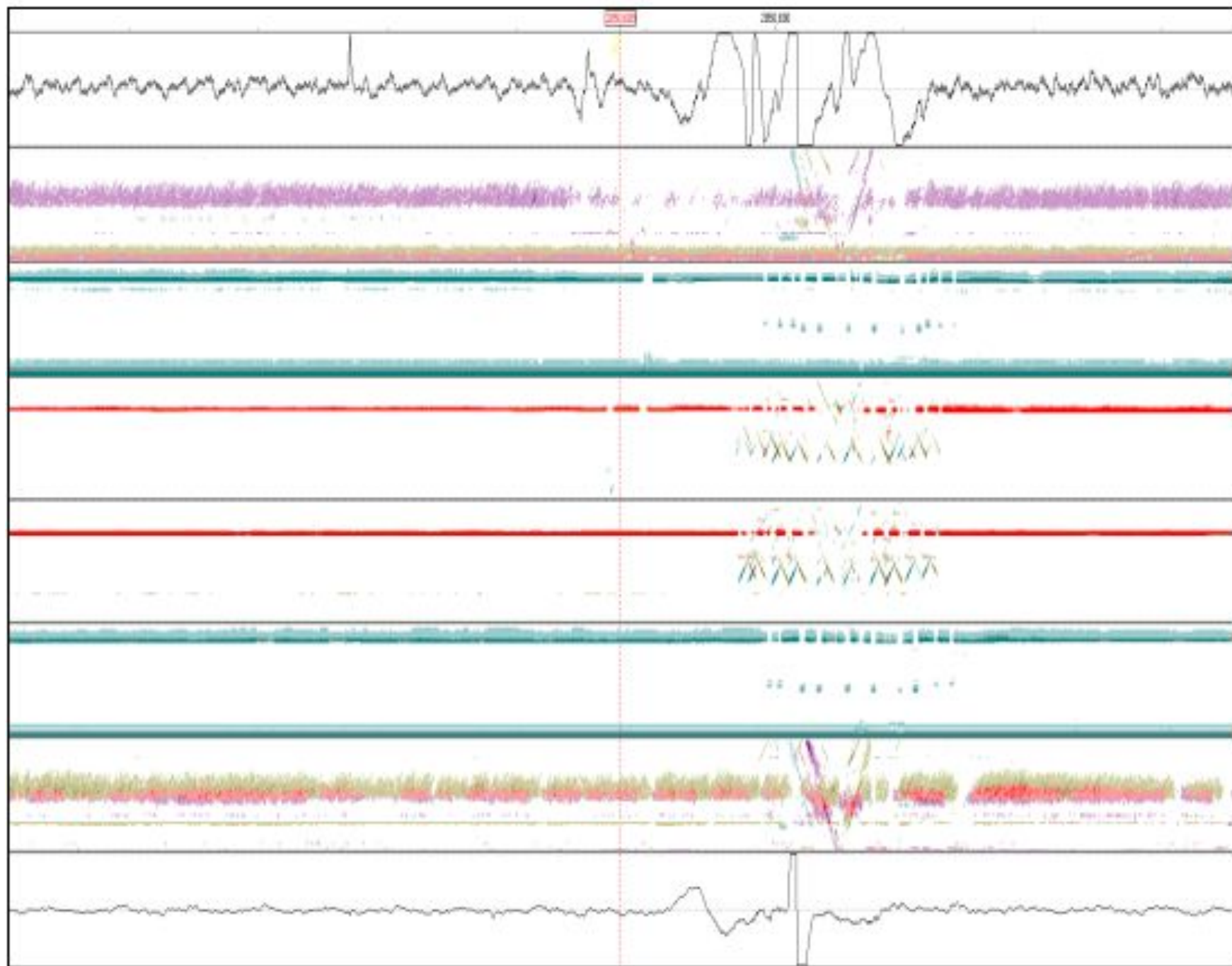
10:34



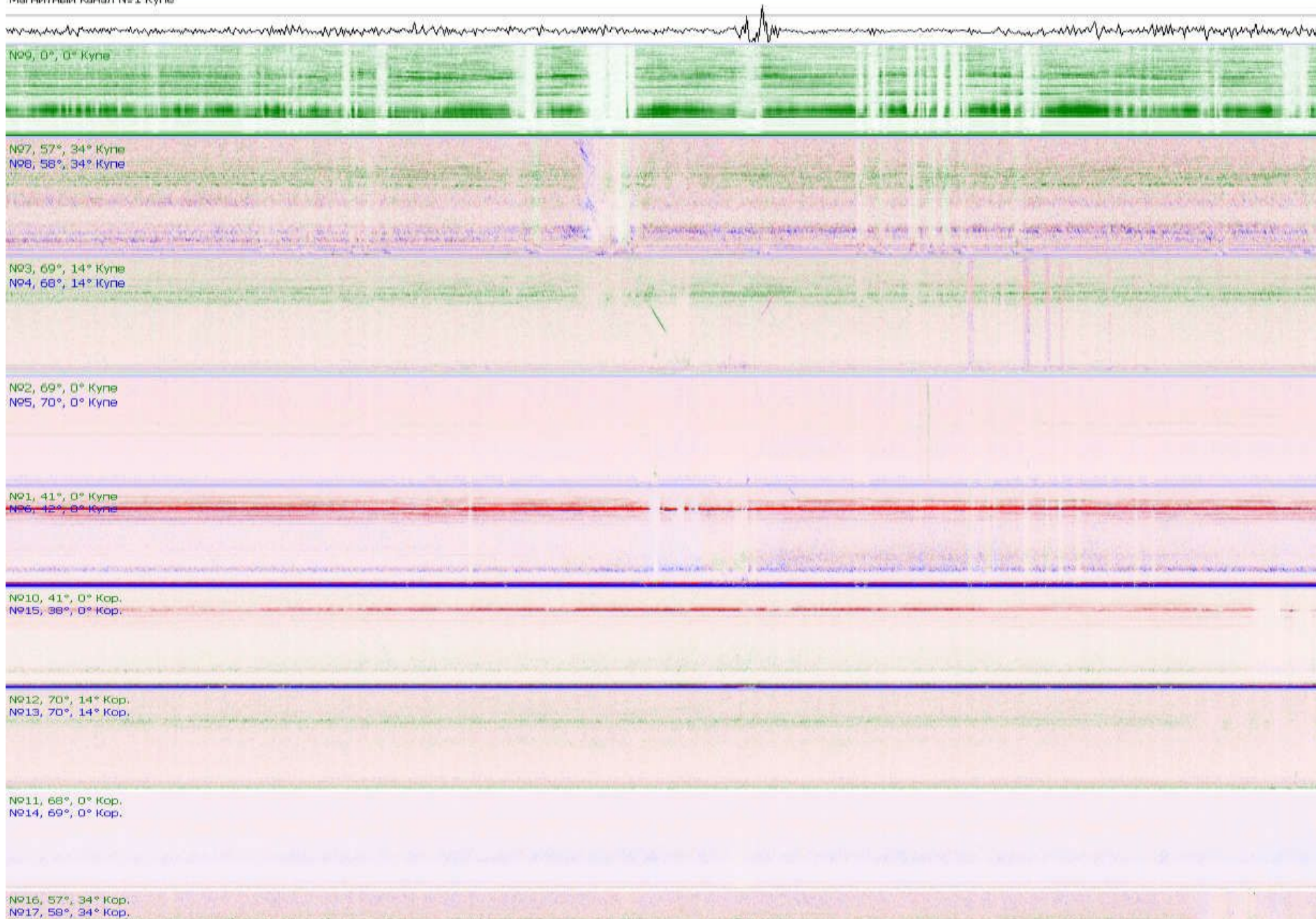


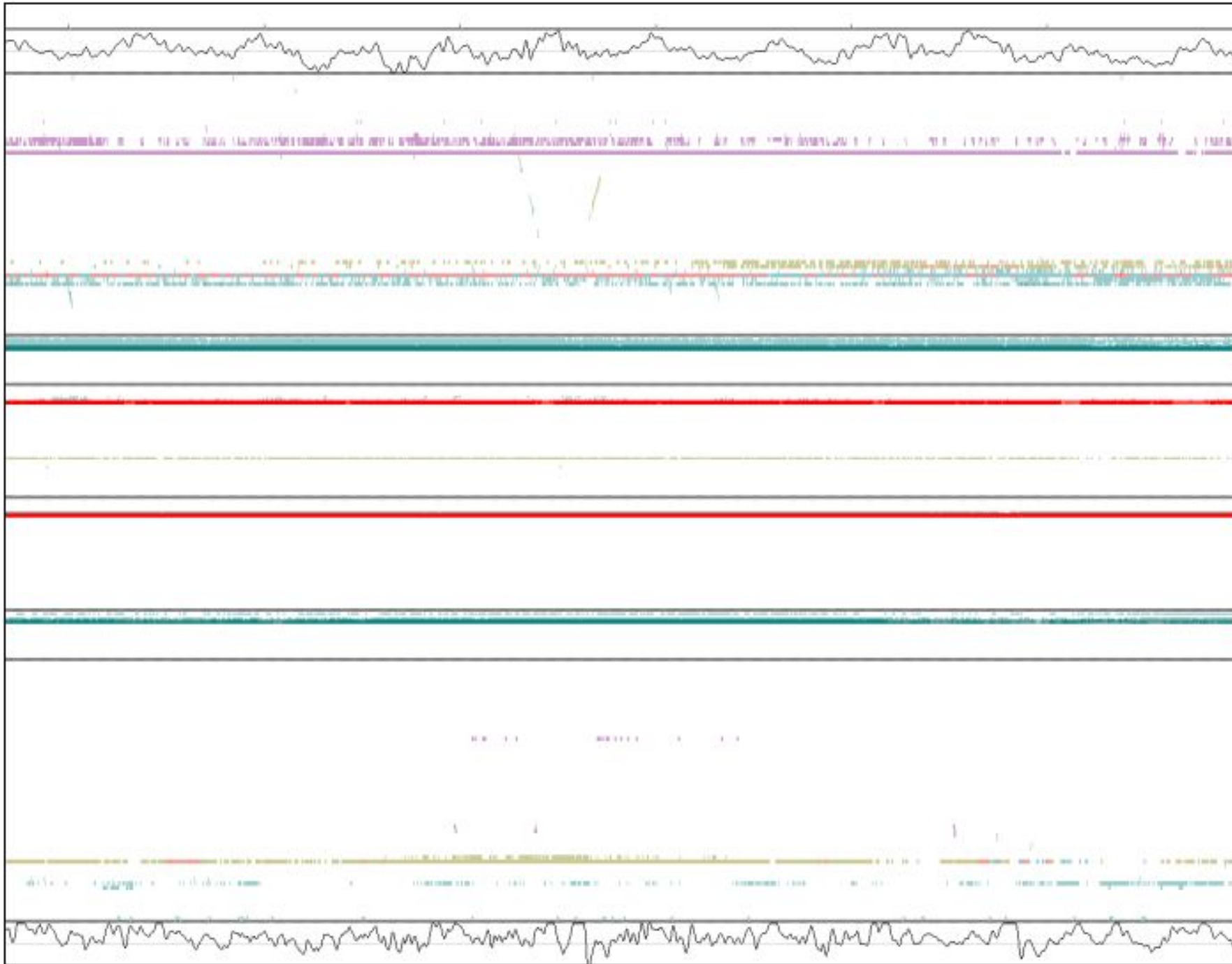


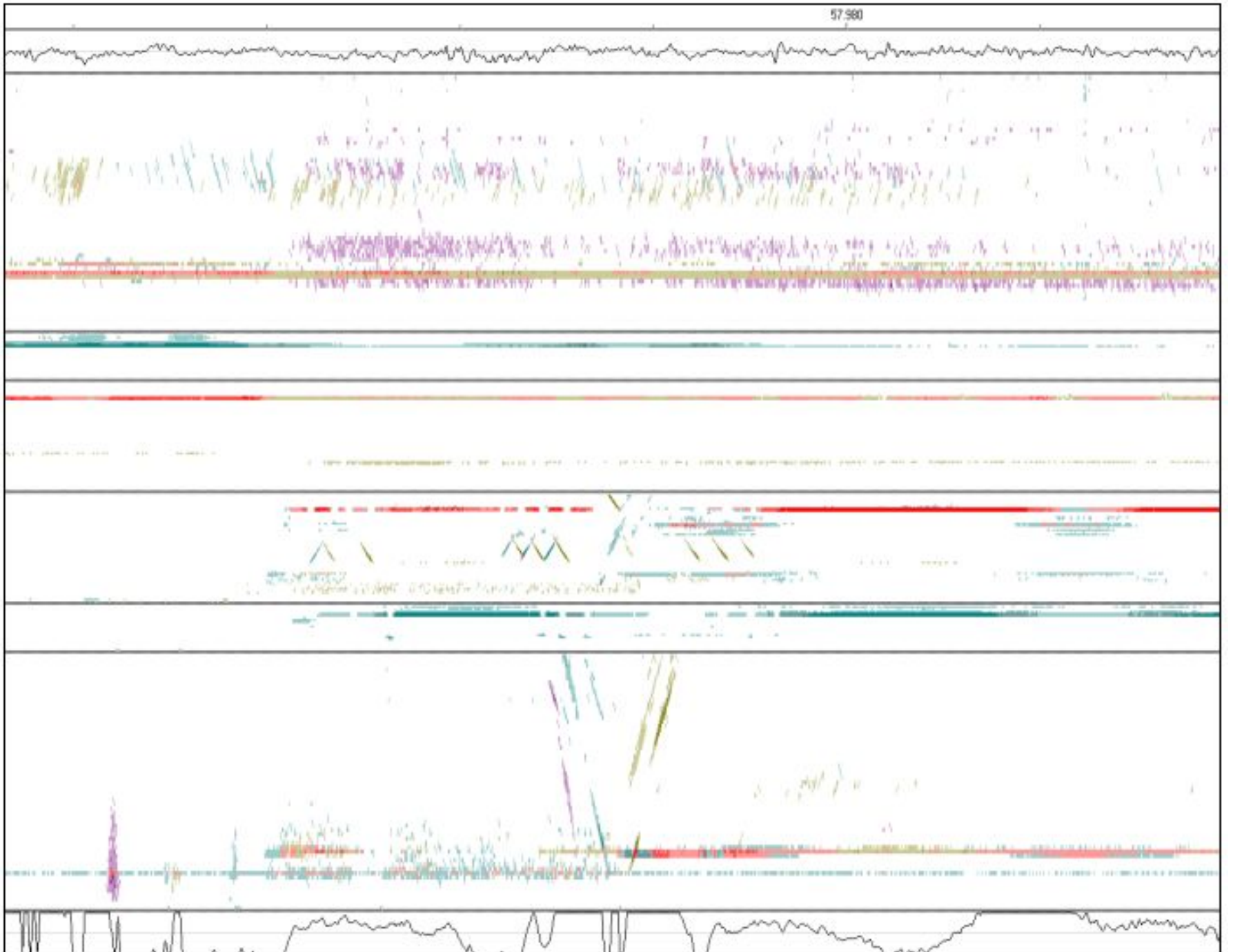


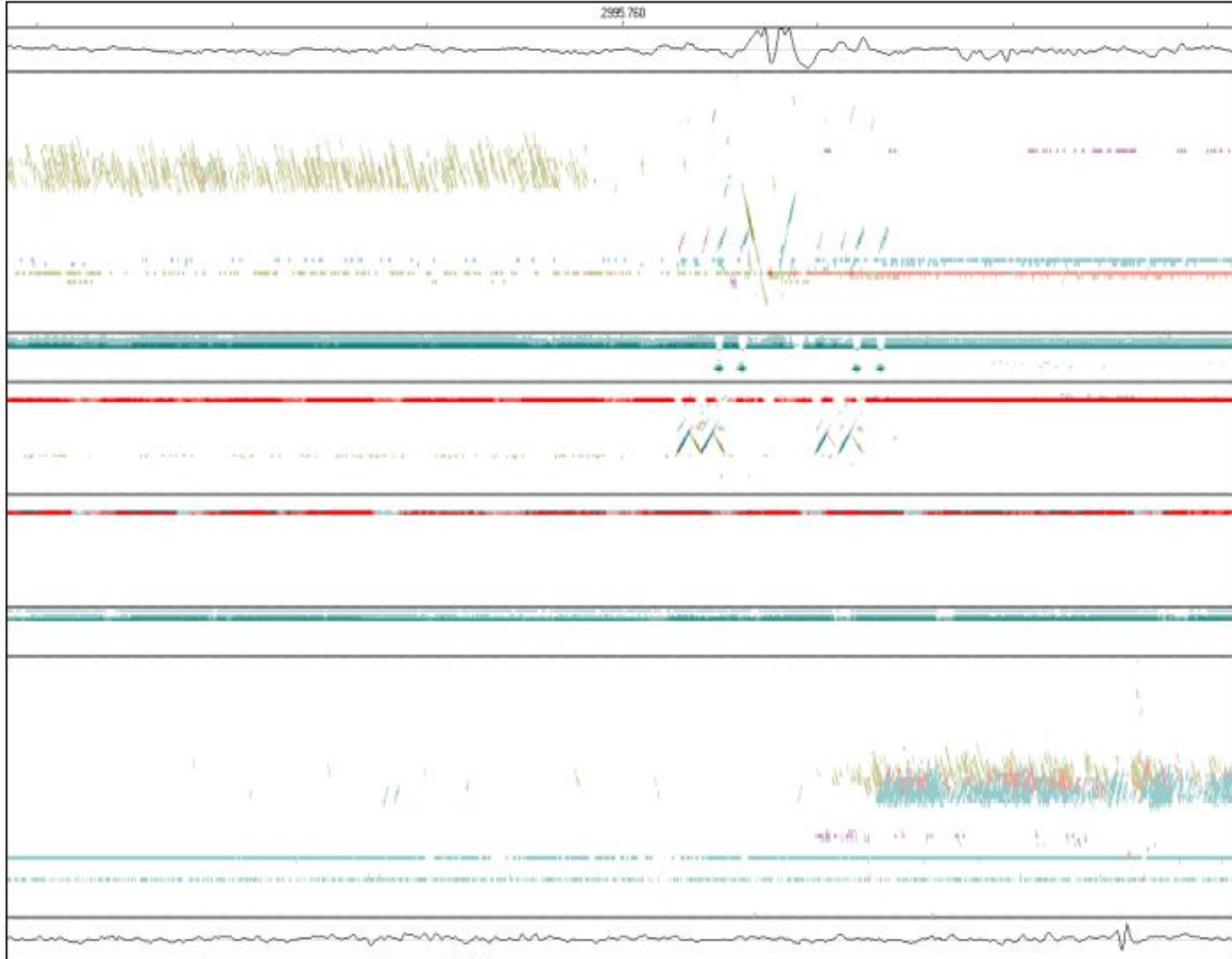


Магнитный канал №91 Купе









3017.500

