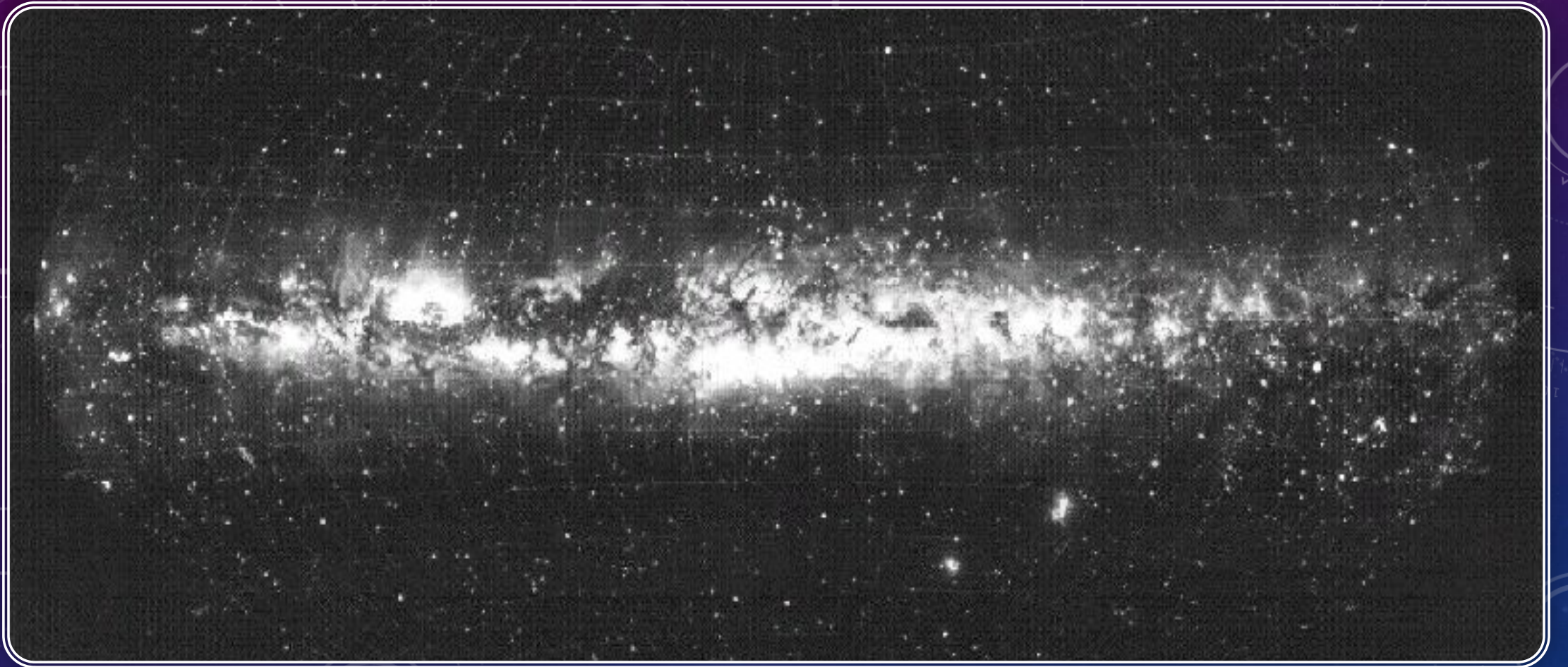
The background is a dense, overlapping pattern of Milky Way candy bars. The bars are in various orientations, creating a sense of depth and movement. The primary colors are the iconic blue and purple of the Milky Way wrapper, accented with yellow and red. The text 'Milky Way' is repeated across the image in its characteristic white, stylized font. A space-themed overlay is present, featuring a dark blue background with white stars and a grid of white dashed lines. A vertical scale on the left side of the image shows numbers from 150 to 260 in increments of 10. The overall composition is dynamic and visually rich, combining the familiar branding of the candy with a cosmic aesthetic.

МЛЕЧНЫЙ ПУТЬ
И
БЛИЖАЙШИЕ
ГАЛАКТИКИ



**ПАНАРАМА МЛЕЧНОГО ПУТИ ,ШВЕЦИЯ ,1955 Г.
ПО ФОТОГРАФИЯМ АСТРОНОМОВ ЛУНДСКОЙ
ОБСЕРВАТОРИИ**

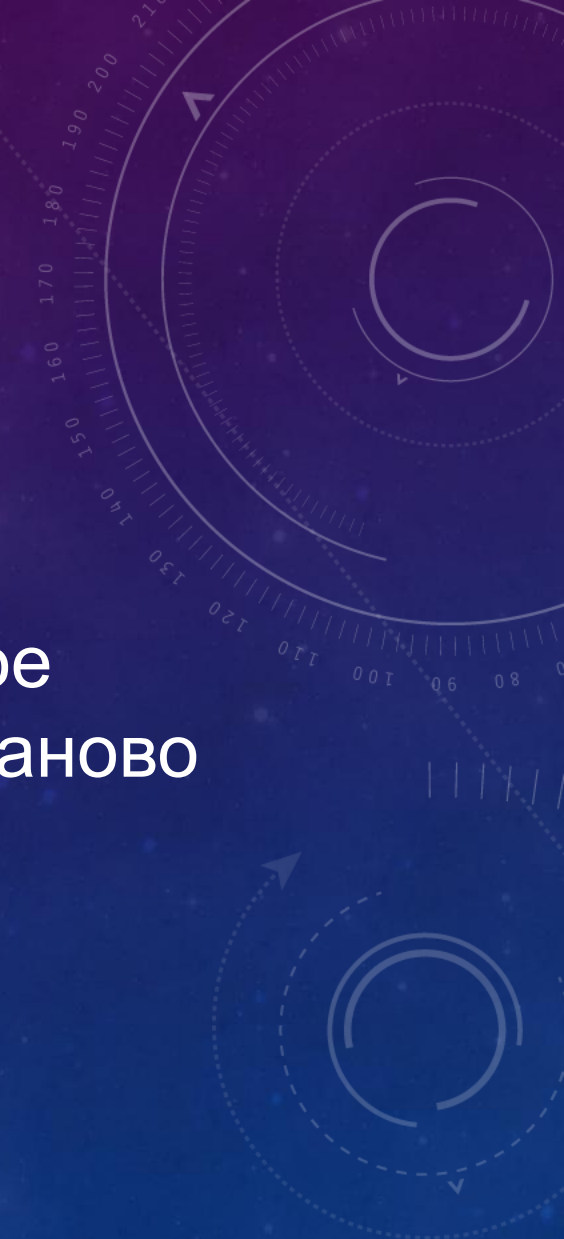




Большое и Малое
Магеллановы облака

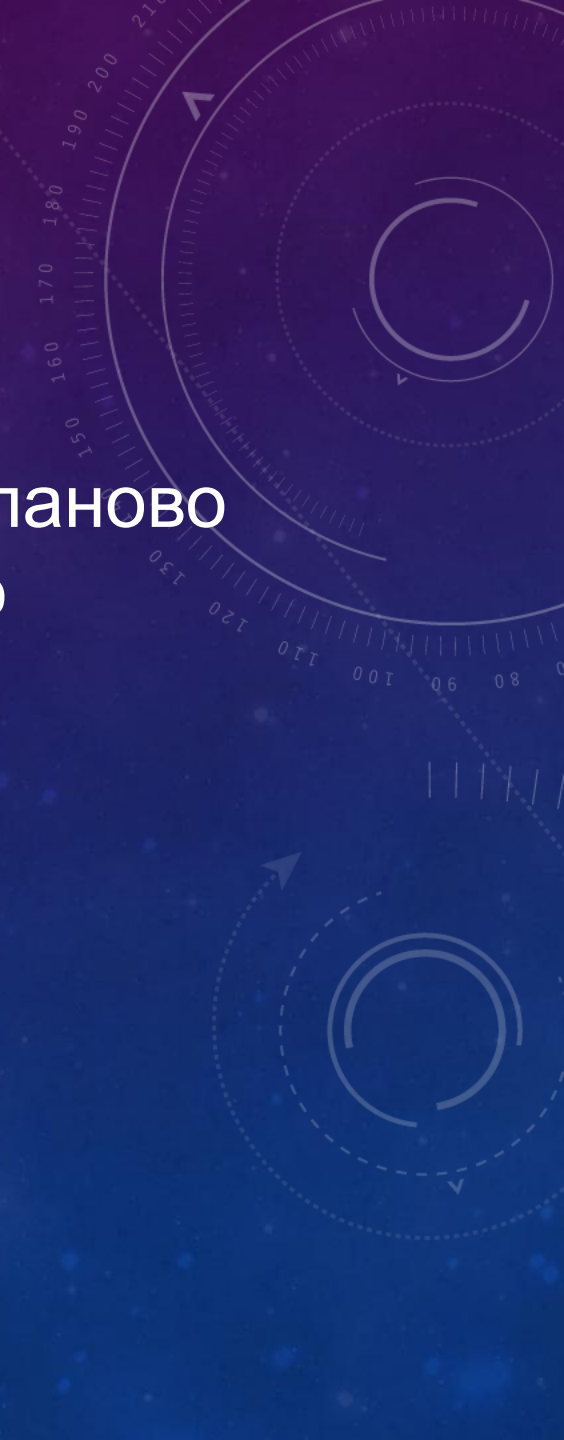


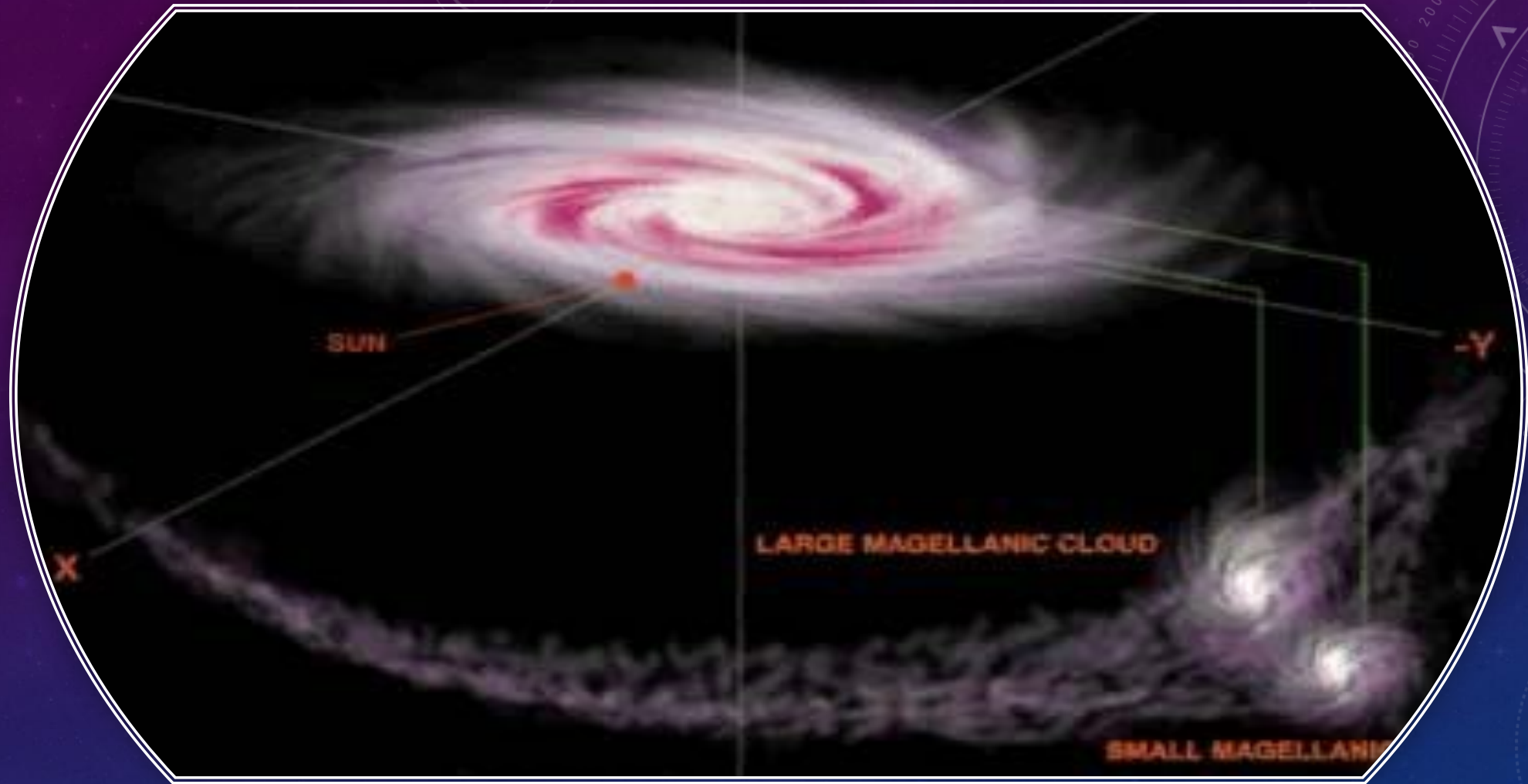
Большое
Магелланово
облако





Малое
Магелланово
облако



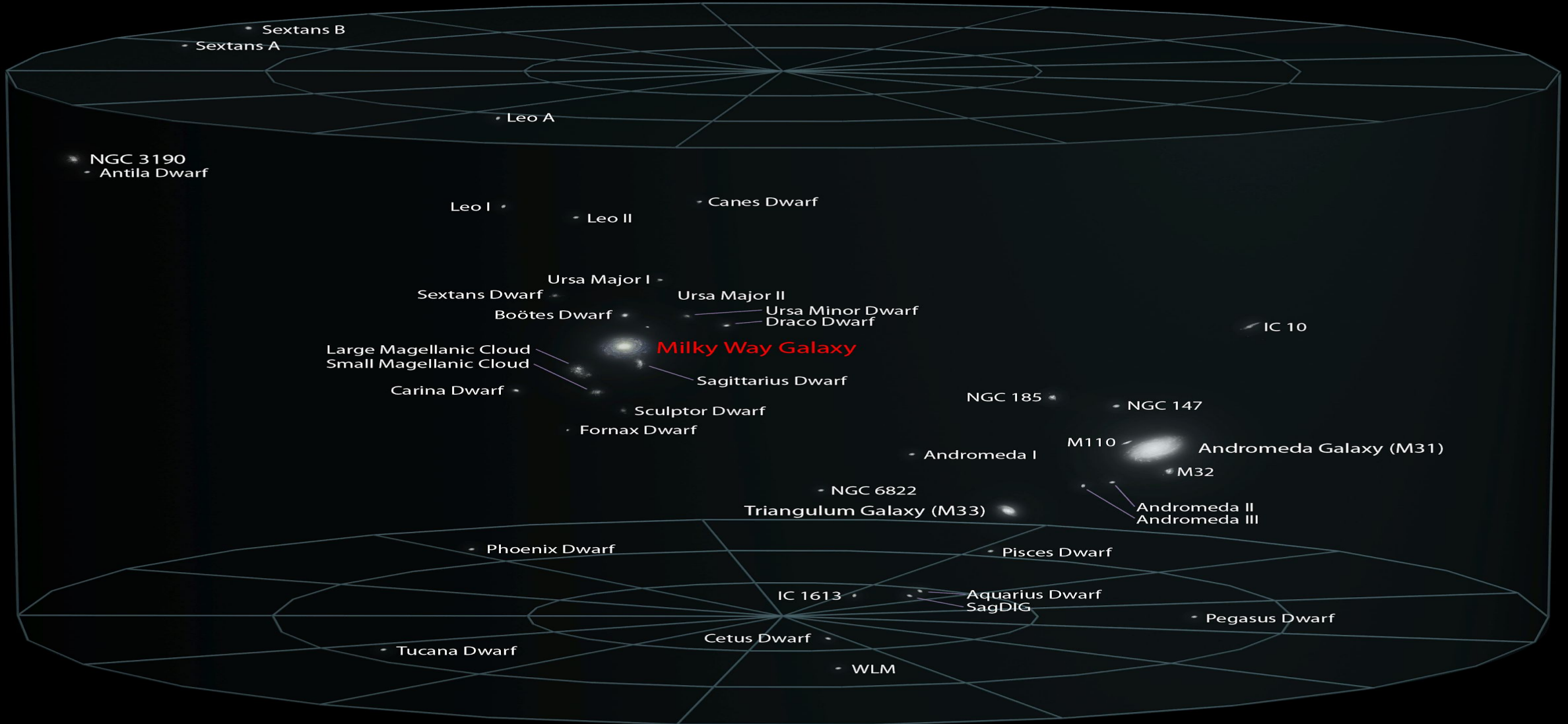


Движение Большого и Малого Магеллановых Облаков по орбите

Спутники нашей Галактики

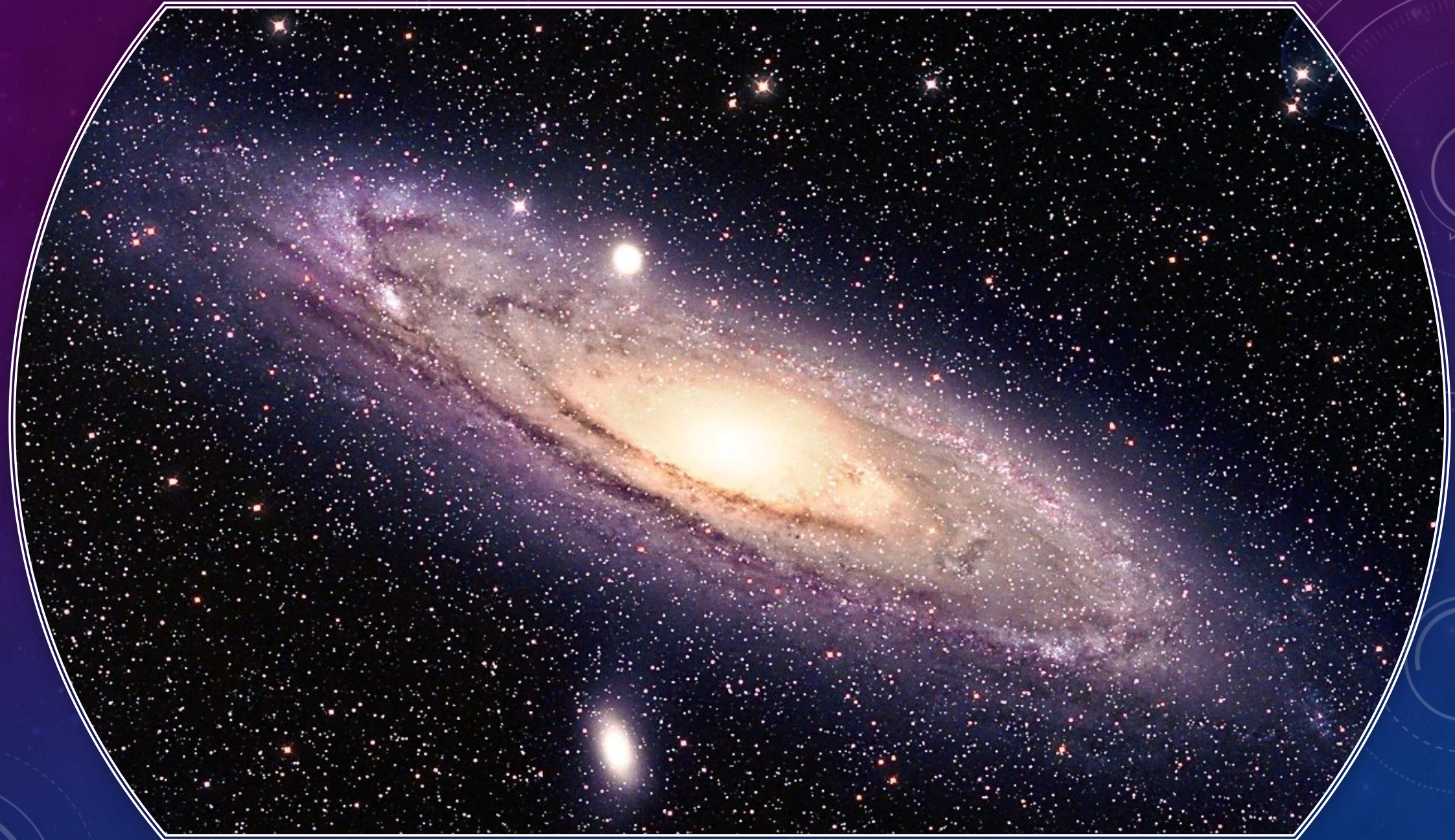


Local Galactic Group





Туманность Андромеды
(M31 , NGC224)-наша
соседка





Карликовая галактика
(M110,NGG205)



Карликовая
эллиптическая
галактика М32-спутник
гигантской спирали
М31

The image features two circular inset images of star clusters. The left inset shows a dense field of white and yellow stars, labeled NGC 147. The right inset shows a similar field but with a mix of blue, yellow, and white stars, labeled NGC 185. The background is a dark blue gradient with decorative white and purple circular patterns and lines. The text is in a clean, white, sans-serif font.

NGC 147

NGC 185

Карликовые
сфероидальные галактики-
спутники туманности
Андромеды

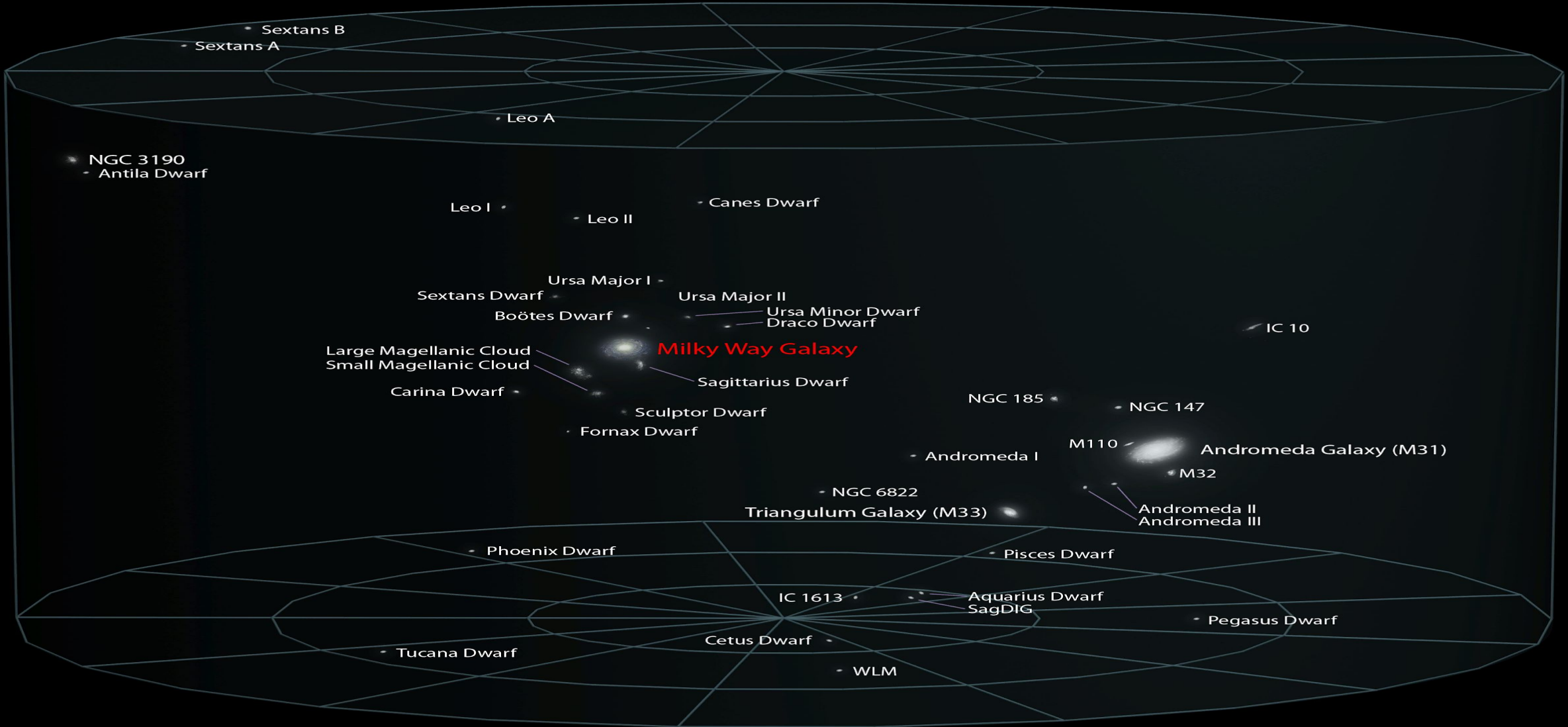
Крупнейшие спутники туманности Андромеды



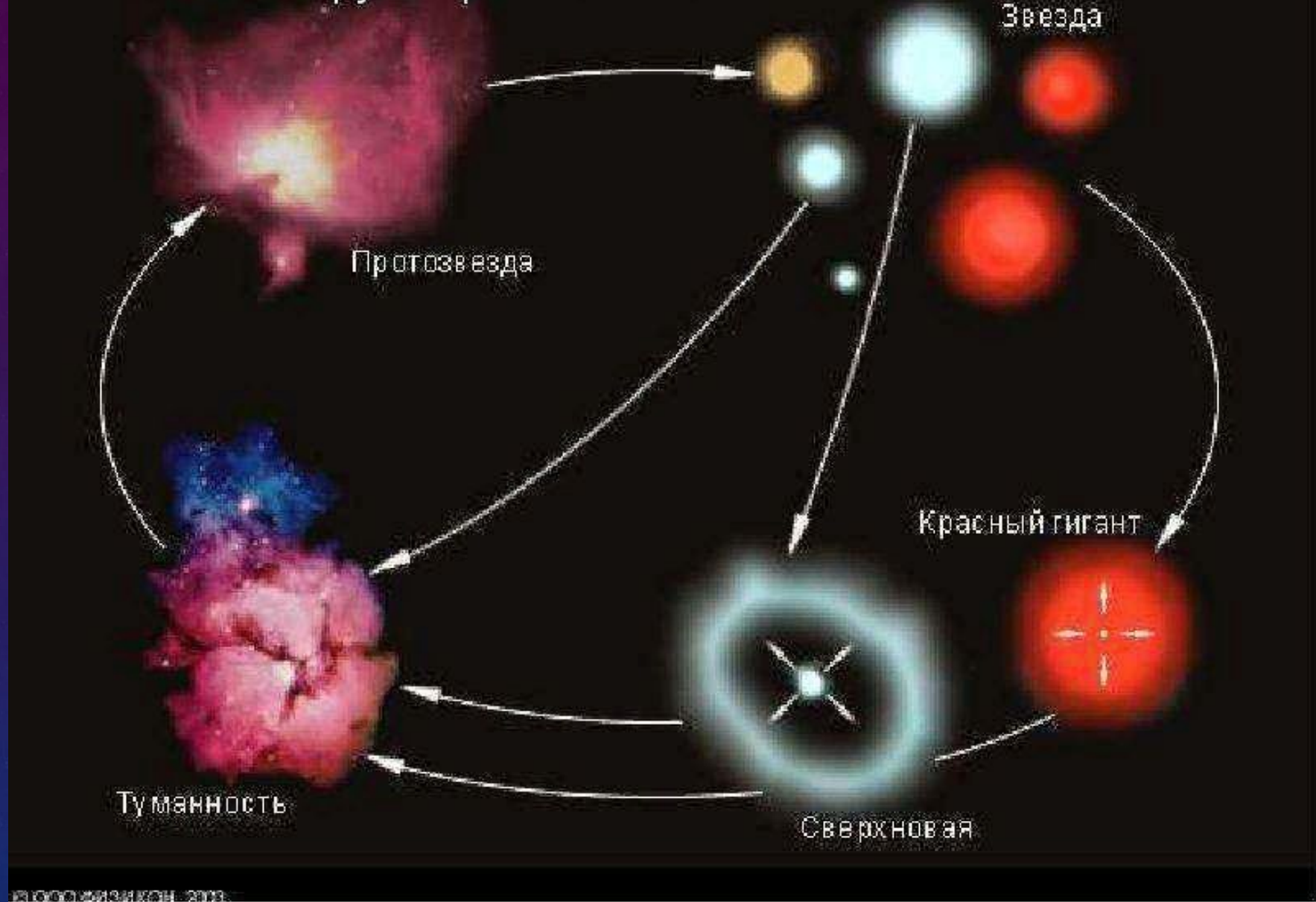


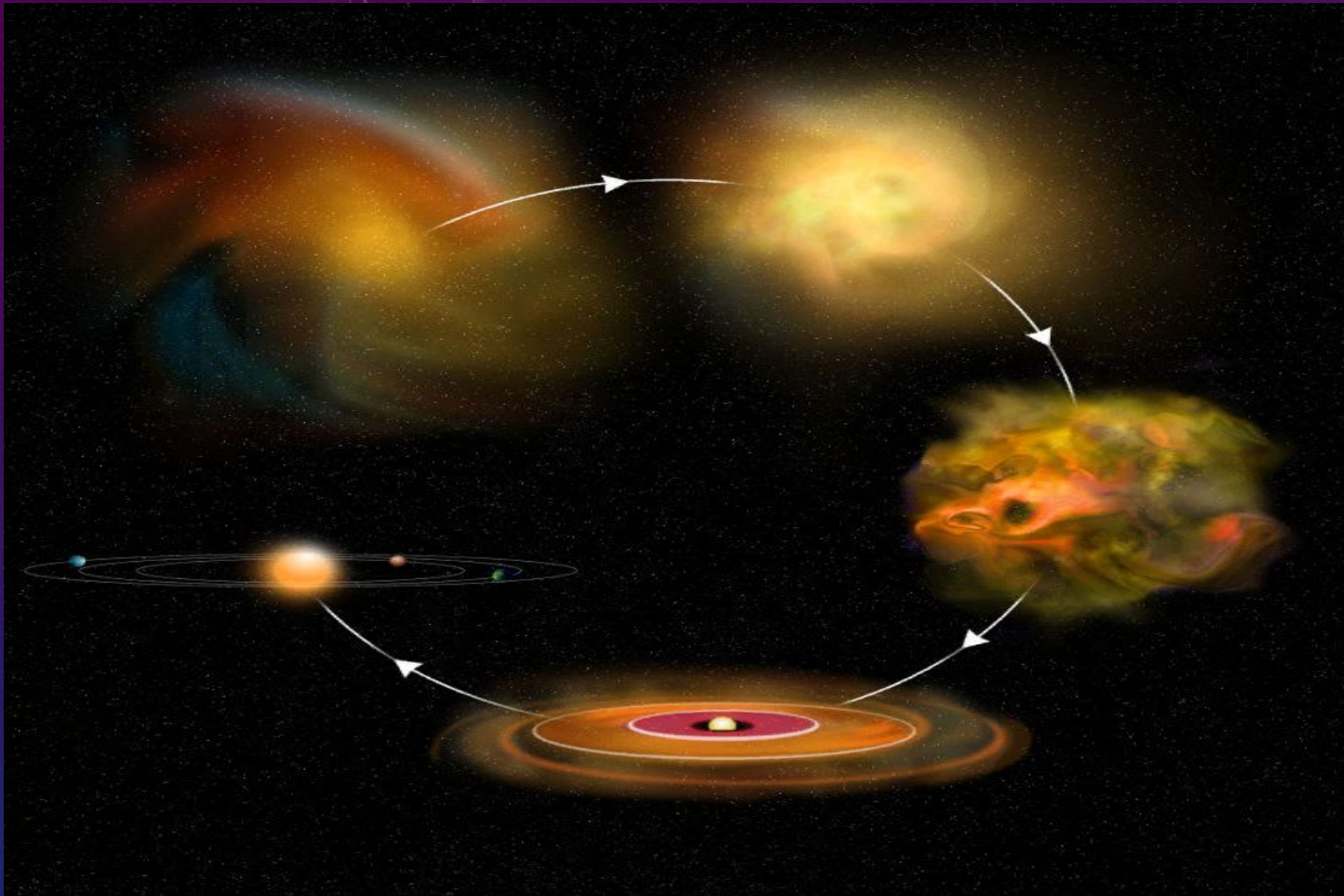
Спираль
треугольника М33

Local Galactic Group



Круговорот газа и пыли в Галактике





Приливное разрушение
карликовой галактики-спутника



Collision Scenario for Milky Way and Andromeda Galaxy Encounter

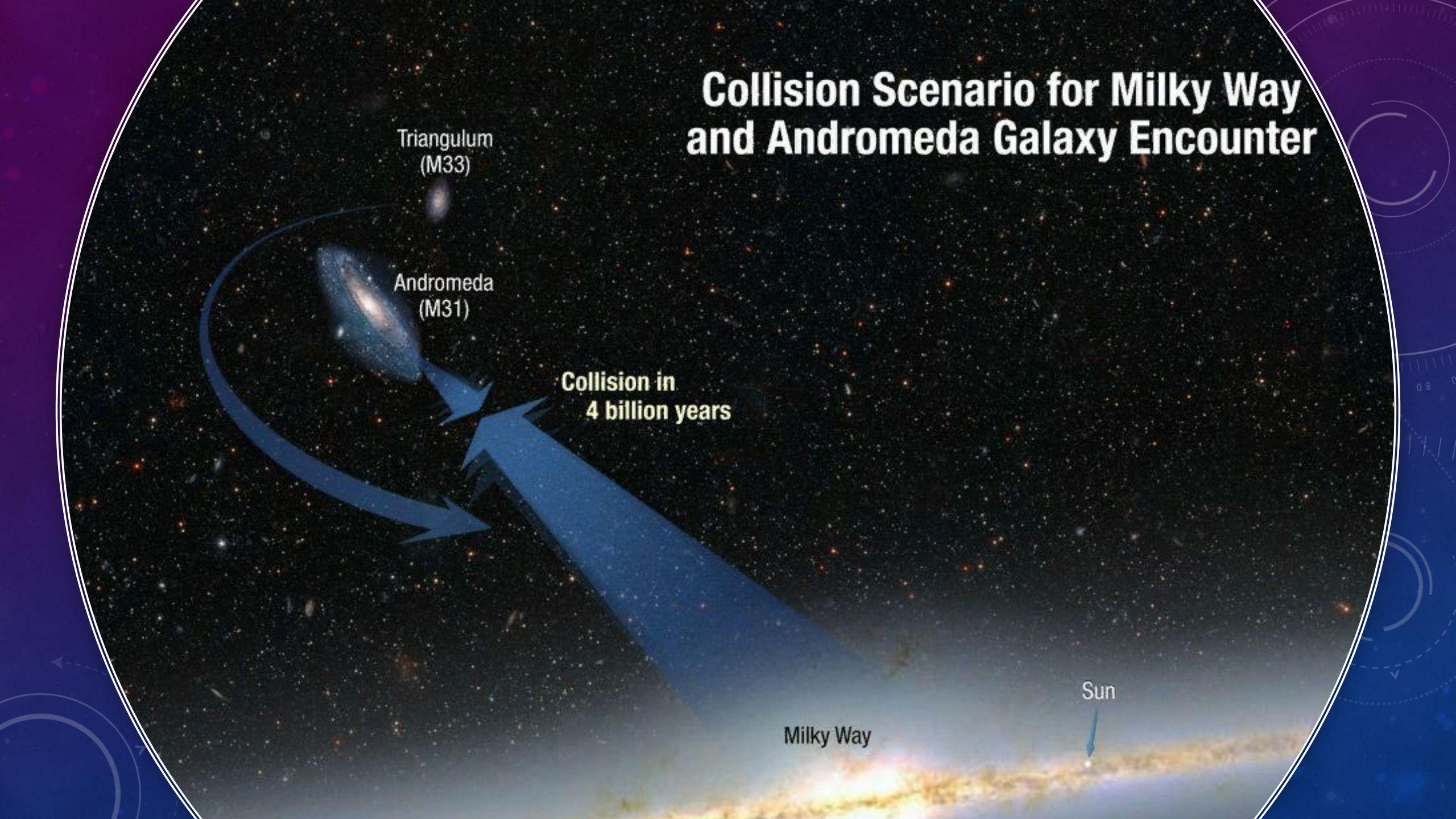
Triangulum
(M33)

Andromeda
(M31)

Collision in
4 billion years

Sun

Milky Way









TheSecretSpace

