

Runic Inscriptions.  
The Ruthwell Cross.  
The Franks Casket

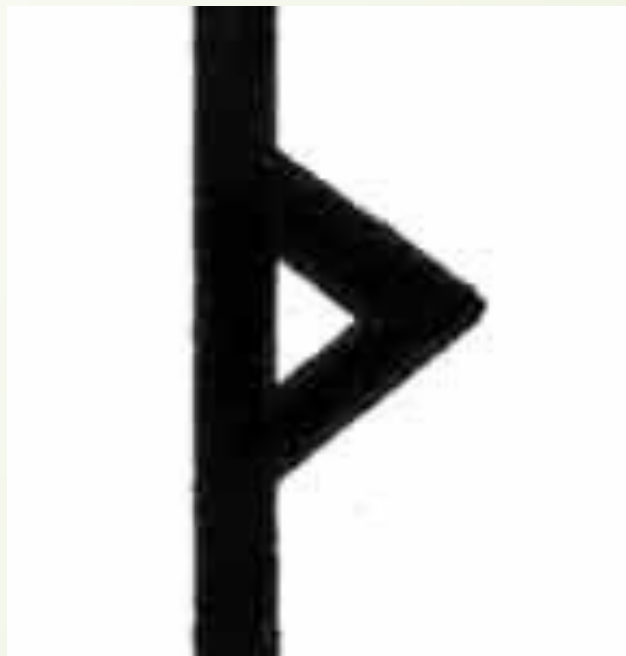
The earliest written records of English are inscriptions on hard material made in a special alphabet known as the **RUNES**





**“rune”**

**“secret,  
mystery”**



[θ] and [ð] was called “**thorn**” and could stand for OE þorn (NE *thorn*)



□ Stood for [w] and [f] were called *wynn* 'joy' and *feoh* 'cattle' (NE fee)

In some inscriptions the runes were found arranged in a fixed order making a sort of alphabet. After the first six letters this alphabet is called futhark

F	U	TH	A	R	K	G	W	H	N	I	J
f	u	th	a	r	k	g	w	h	n	i	j
↓	Ʒ	Y	S	T	B	E	M	L	NG	O	D
e	p	R	s	t	b	e	m	l	ng	o	d

A decorative graphic on the left side of the slide. It features a dark red arrow pointing to the right, positioned above several thin, dark grey lines that curve downwards and to the left, resembling stylized grass or reeds.

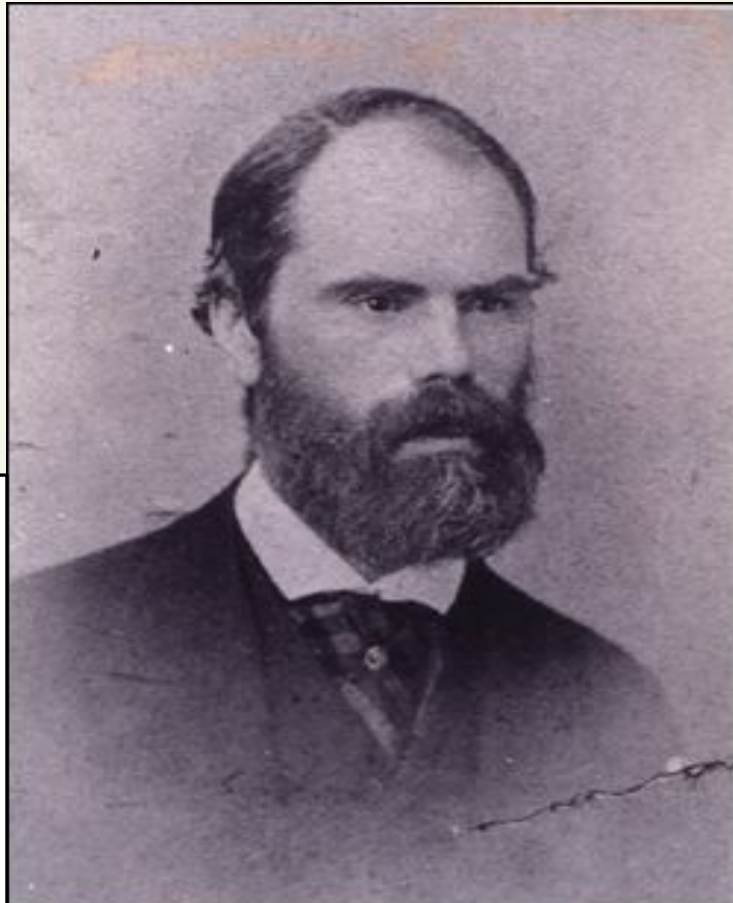
The two best known runic inscriptions in England are the earliest extant OE written records

A Venn diagram consisting of two overlapping circles. The left circle is a light reddish-brown color and contains the text 'Franks Casket'. The right circle is a darker reddish-brown color and contains the text 'Ruthwell Cross'. The overlapping area in the center is a darker shade of the right circle's color.

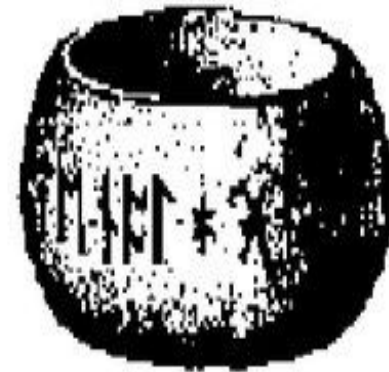
**Franks  
Casket**

**Ruthwell  
Cross**

*The Casket is a small  
box  
made of whale bone*



Augustus  
Wollaston  
Franks

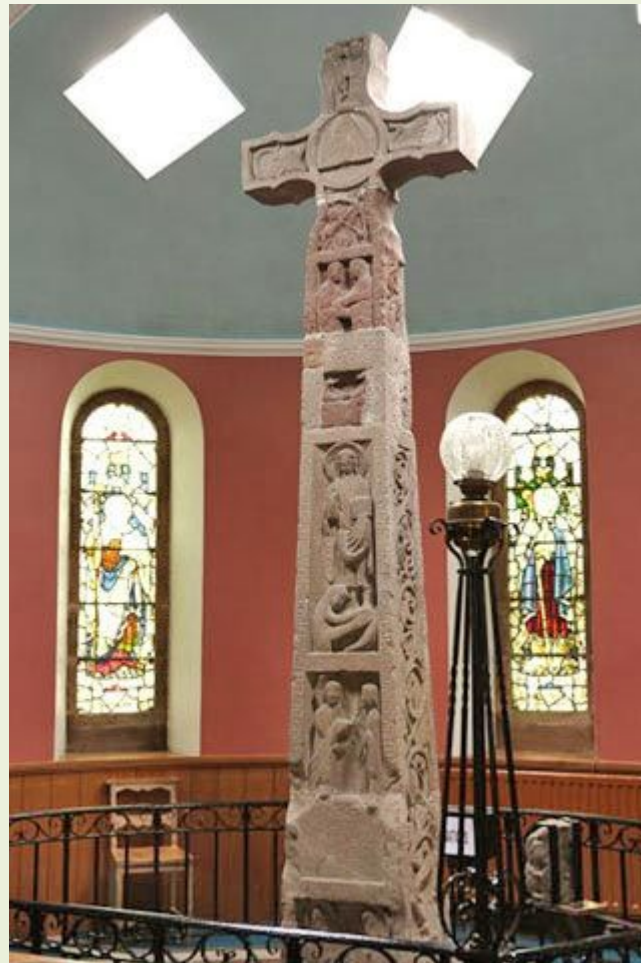


\*X-MORRENE-NE-ARLOR-DEPTMY-AM-GETT-LET

Agate ring with runic inscription (1/1).



**The Ruthwell Cross is a 15ft tall stone cross inscribed and ornamented on all sides**



A person in a dark suit and light blue striped shirt is holding a white rectangular sign. The sign has the word "ANY" in large, bold, black capital letters on the top line, and the word "questions?" in a smaller, black, lowercase cursive font on the bottom line. The person's hands are visible at the bottom right of the sign. The background is a blurred office setting with orange and white elements.

ANY  
questions?





**Who is A.W.Franks?**



the origin of the word 'tune'





**THANK  
YOU  
FOR  
YOUR  
ATTENTION**