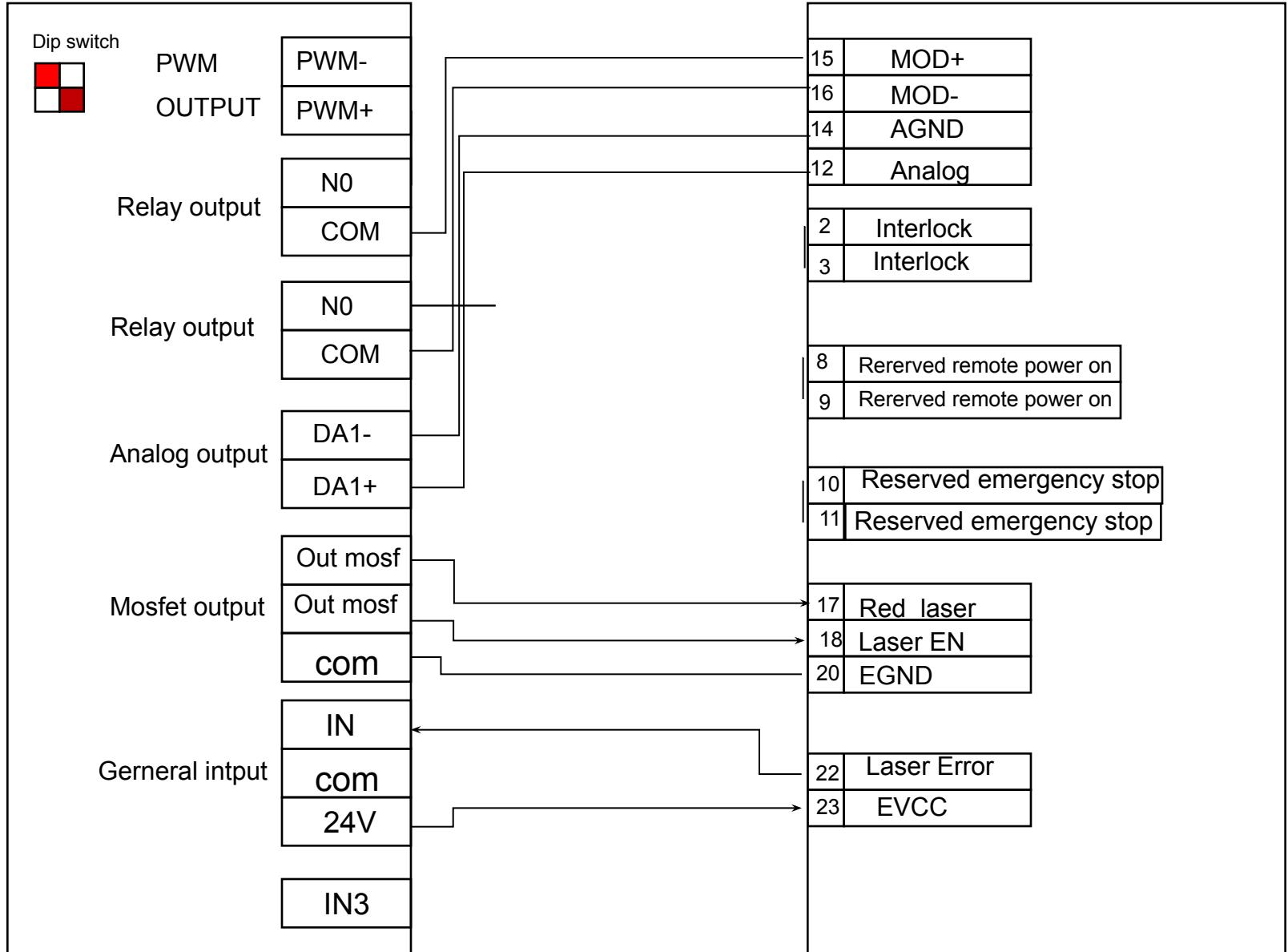


小体积RAYCUS

外部AD控制模式接线与设置

BCL3766

RAYCUS RFL-C2000S



— .The first time you use it,you need to connect the laser software”C500S-ST-0654-V3.2” ,To set

« C500S-V3.2-上位机程序 > C500S-ST-0654-V3.2-上位机程序 > C500S-ST-0654-V3.2 > bin > Debug

搜索

名称	修改日期	类型	大小
de	2019/1/18 9:40	文件夹	
es	2019/1/18 9:40	文件夹	
fr	2019/1/18 9:40	文件夹	
hu	2019/1/18 9:40	文件夹	
it	2019/1/18 9:40	文件夹	
ja	2019/1/18 9:40	文件夹	
pt	2019/1/18 9:40	文件夹	
ru	2019/1/18 9:40	文件夹	
sk	2019/1/18 9:40	文件夹	
sv	2019/1/18 9:40	文件夹	
tr	2019/1/18 9:40	文件夹	
zh-cn	2019/1/18 9:40	文件夹	
zh-tw	2019/1/18 9:40	文件夹	
Config	2018/3/9 9:50	XML 文档	1 KB
QCW.vshost.exe.config	2017/11/30 10:35	CONFIG 文件	1 KB
QCW.vshost.exe.manifest	2013/3/18 17:00	MANIFEST 文件	1 KB
RFLXXS	2019/1/8 14:33	应用程序	135 KB
RFLXXS.exe.config	2017/11/30 10:35	CONFIG 文件	1 KB
RFLXXS.pdb	2019/1/8 14:33	PDB 文件	226 KB
RFLXXS.vshost	2019/1/8 14:36	应用程序	24 KB
RFLXXS.vshost.exe.config	2017/11/30 10:35	CONFIG 文件	1 KB

1 个项目 134 KB

500S_Raycus V3.2.0

Session Tools Language Help Exit

RS232
Ethernet

Read

Guide Laser Control

DEABC EEABC

ABF ABN

Gate Mode

DGM EGM

Modulation Mode

DMOD EMOD

Hardware Emission Control

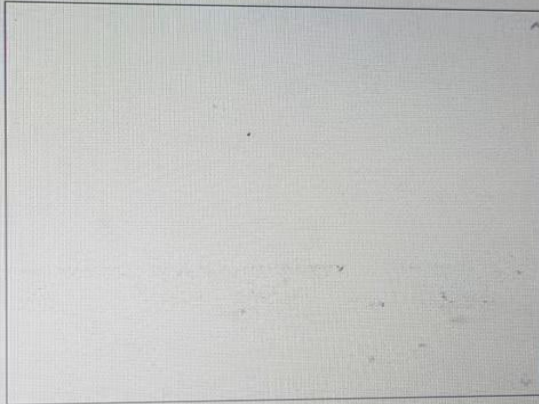
DLE ELE

External AD Control

DEC EEC

Wave Mode Enable

DWPM EWPM



Clear

Emission Control

Power 0 Set Get

Pulse Repetition Rate 100 Set Get

Pulse Width(ms) 1.0 Set Get

Duty 10

Start Emission

Stop Emission

Raycus Status

- ACDC Alarm1
- ACDC Alarm2
- InterLock1
- InterLock2
- InterLock Err
- FFU
- Boost Err
- Laser Ready
- Cur Driver1 Alarm
- Cur Driver2 Alarm
- Cur Driver3 Alarm
- Cur Driver4 Alarm
- Laser Out1 Alarm
- Laser Out2 Alarm
- Laser Energyb Low
- Laser Energyc Low
- Laser Locked

- Laser
- Exter
- Guide
- Pulse
- Modul
- Gate
- Wave
- Guide
- Hardw
- Temp
- Temp
- Averag
- Power
- Raycus

er SN

Read

er Time

Read

er Temperature

Read

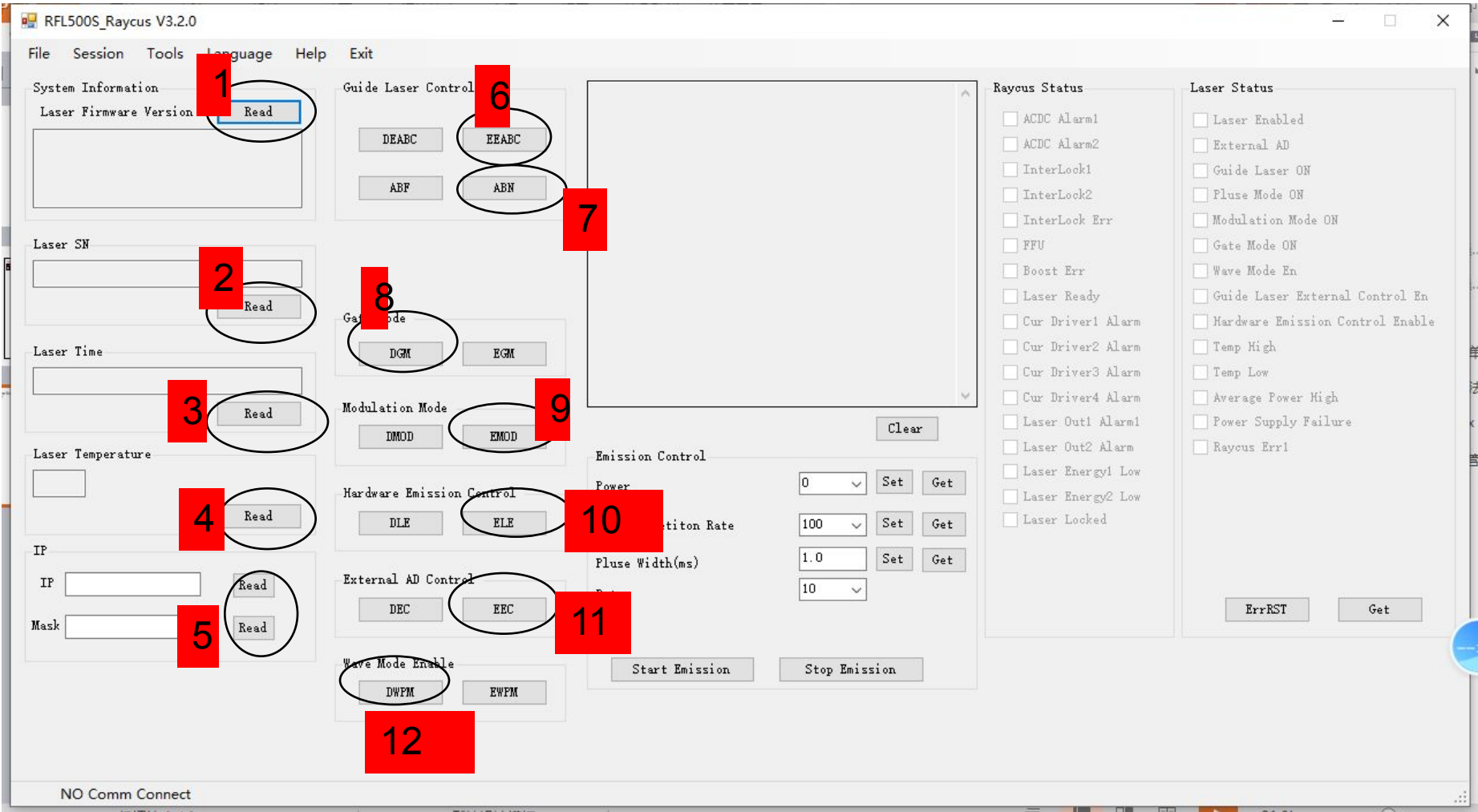
P

Read

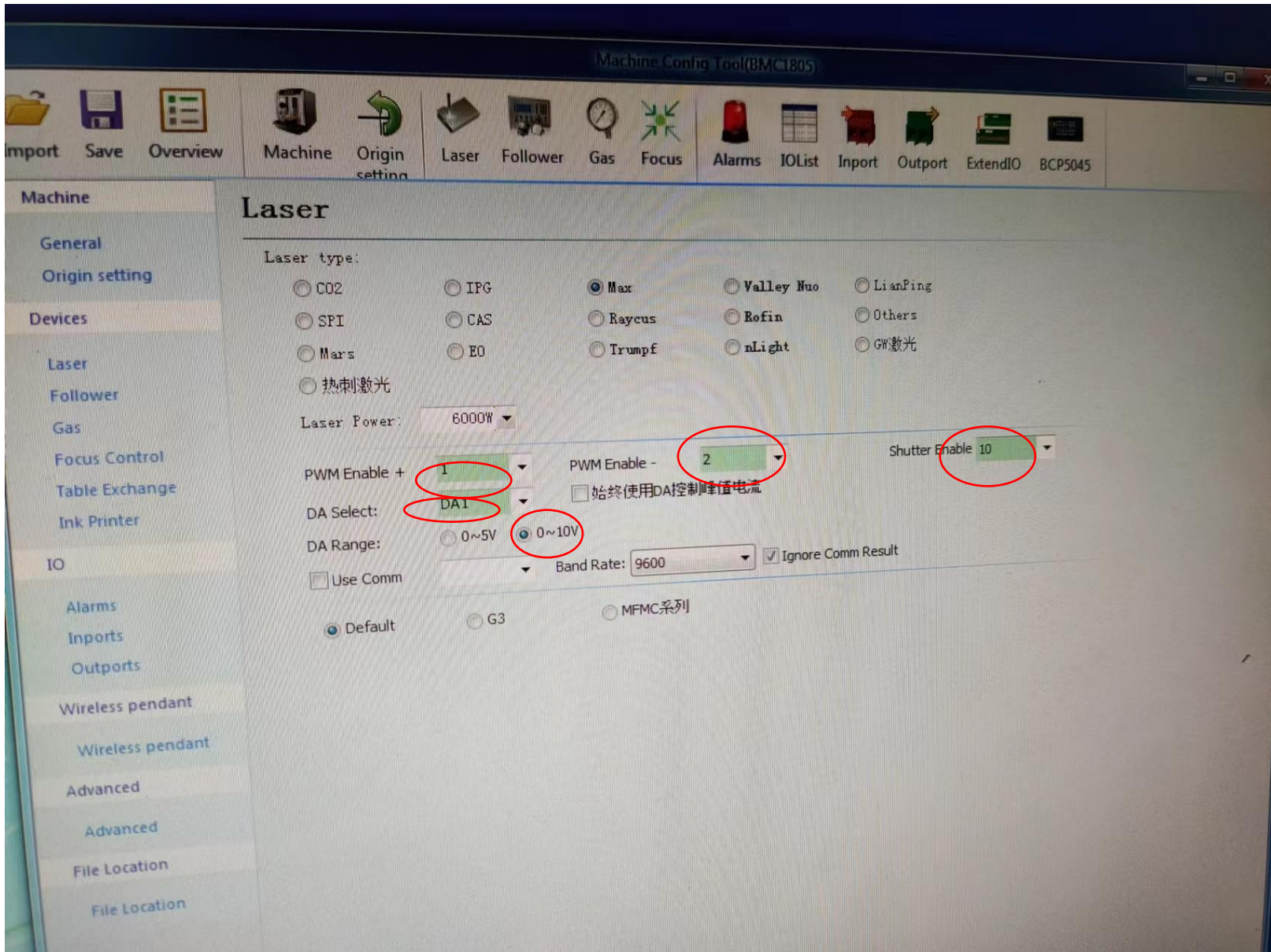
ask

Read

Err



二. Open Platform configuration, to set





- Machine
 - General
 - Origin setting
- Devices
 - Laser
 - Follower
 - Gas
 - Focus Control
 - Table Exchange
 - Ink Printer
- IO
 - Alarms
 - Inports
 - Outports
 - Wireless pendant
 - Wireless pendant
 - Advanced
 - Advanced

Digit Output

General Output

Aiming: 11 Lasering: 0
Ready: 0 Alarm light: 0
Working: 5 Alarm bell: 6

Output processing instruction Send command when pause

- Alarm indicator
- Working indicator
- Laser Lights Flashing
- Alarm Bell Intermit

Auto Lubricate

By time By mileage Manual

Mileage interval: 0km
Time interval: 60min
Oil control port: 12
Duration: 30s
Overload: 0
Low oil level: 0

Lubrication Model

Manual

Custom output configuration

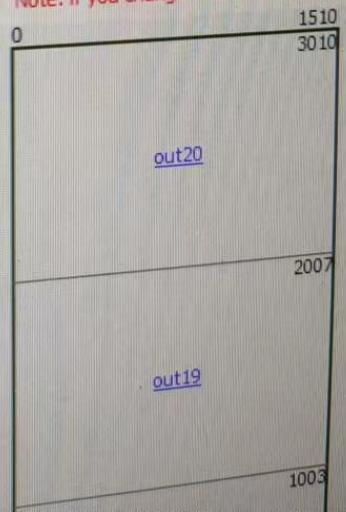
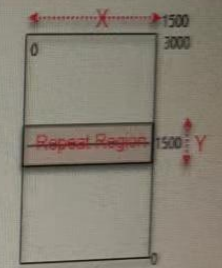
Add Delete
Output Lock

分区域输出

Area division: 3 1
 Coordinate edit
 Turn-off delay: 5s
 Only extract in cutting

Overlay area (X/Y):
X: 0 Y: 0

Divide by grid Divide by (X,Y) coordinates
Note: if you change the machine travel range or origin direction you have to modify



Alarms

Emergency:
 NO NC

Maintain:
 NO NC

Max Speed (Maintain): mm/s

Max Power (Maintain): W

Gantry deviation tolerance: mm

Gantry Alarm:
 Tolerance: mm
 Duration: ms
 Max Dev: mm

- Force enable manual reset
- BCS100 alarm must be acknowledged
- Display warning while machine in operation:

机床运行时, 严禁将手和身体的任何部位伸进机床!

Custom input alarm:

input port alarm
input port warning
4 Ports Alarms

Alarm description	Port...	Level		Time Filter
冷水机 报警	15	<input checked="" type="radio"/> NO	<input type="radio"/> NC	0
激光器 报警	14	<input checked="" type="radio"/> NO	<input type="radio"/> NC	0
油泵 1 报警	13	<input type="radio"/> NO	<input checked="" type="radio"/> NC	0