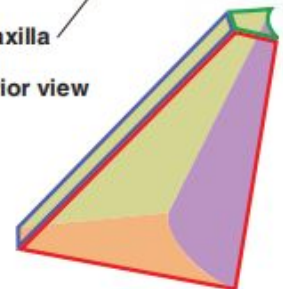
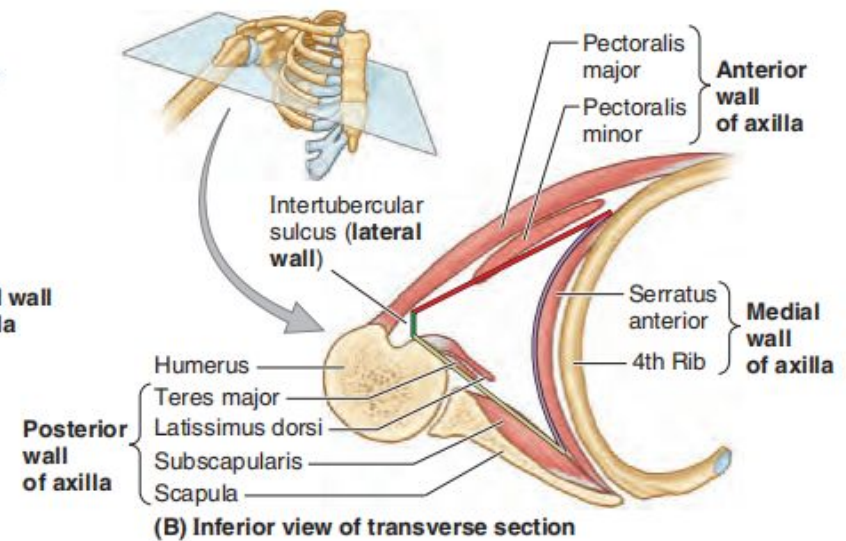
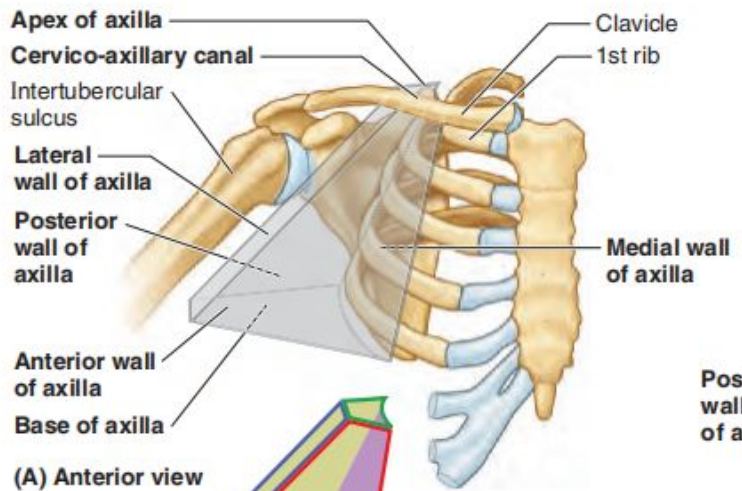
The image is a composite of several anatomical illustrations of the upper limb, focusing on the arterial system. It includes: a large illustration of the arm and forearm from the front, showing the brachial artery and its branches; a smaller illustration of the arm from the back; two small illustrations of the elbow joint showing the radial and ulnar arteries; a detailed illustration of the hand and wrist showing the palmar arches; and a large illustration of the arm and forearm from the back, showing the radial and ulnar arteries. The text is overlaid on a semi-transparent white box in the center.

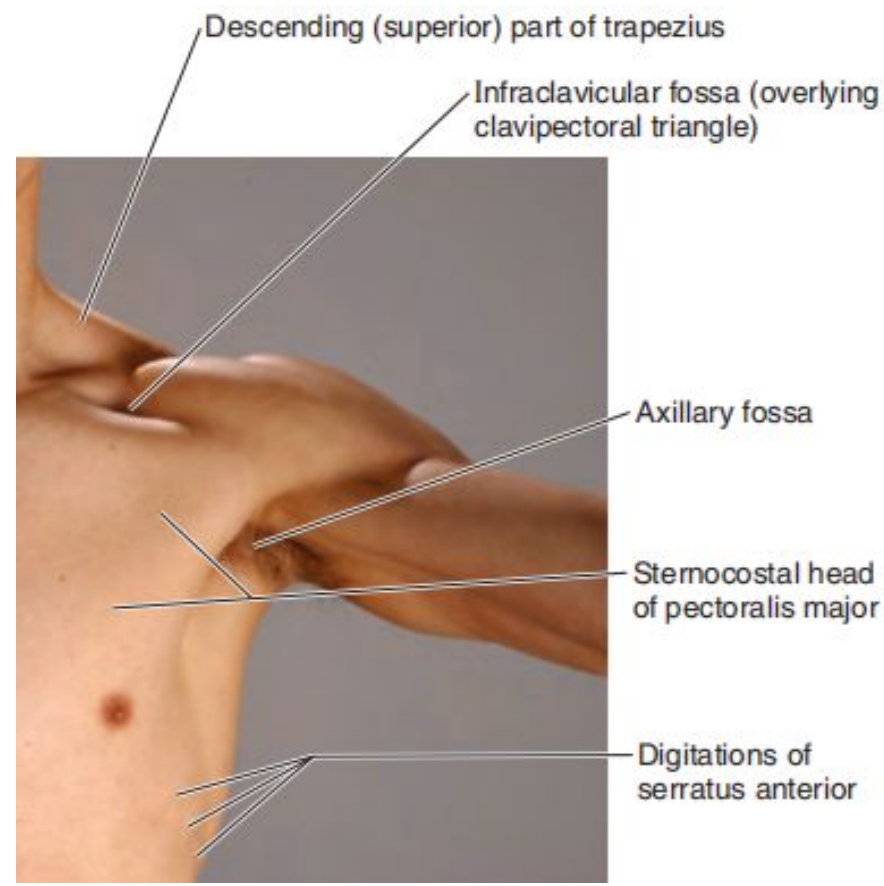
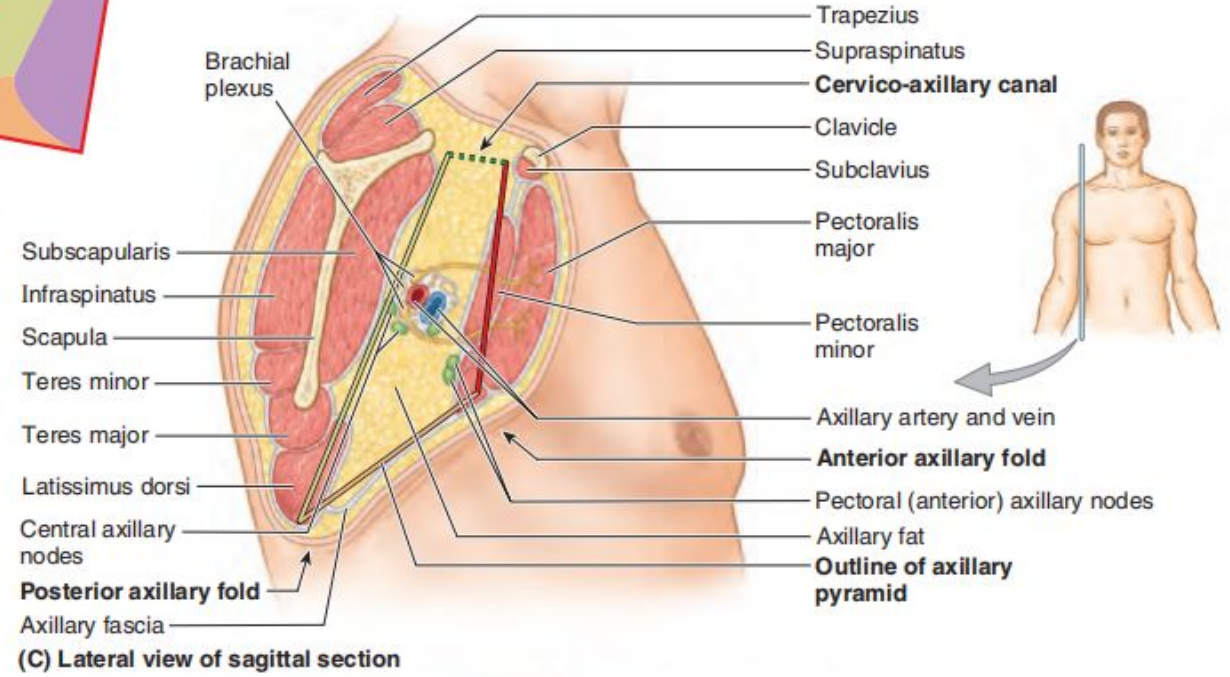
# АРТЕРИИ ВЕРХНЕЙ КОНЕЧНОСТИ

Асс. кафедры нормальной анатомии КГМУ  
Файзрахманова А.Н.

# Вспоминаем ПОДМЫШКУ

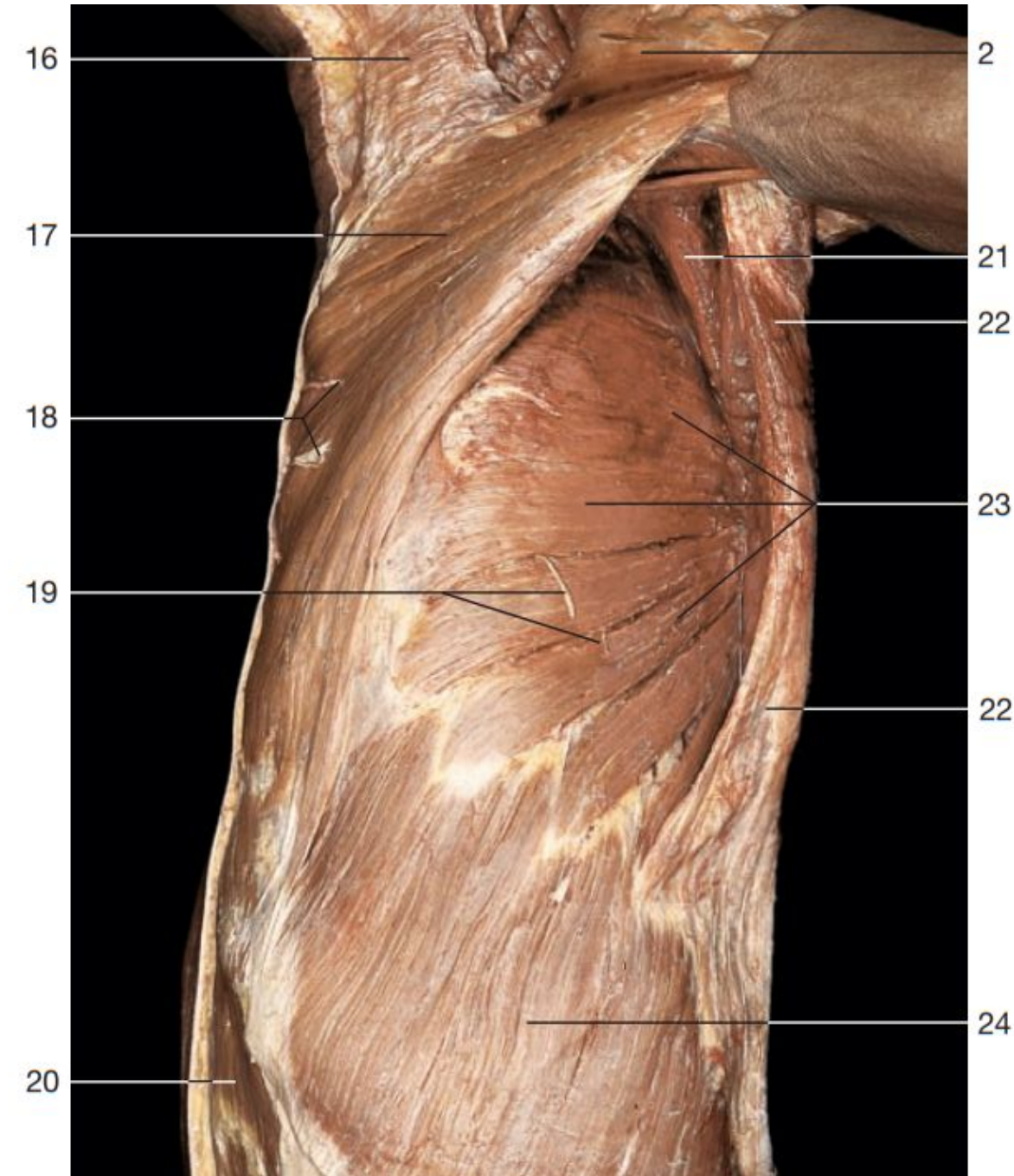


Axillary boundaries	
<span style="color: green;">█</span>	Apex
<span style="color: orange;">█</span>	Base
<span style="color: red;">█</span>	Anterior wall
<span style="color: blue;">█</span>	Lateral wall
<span style="color: purple;">█</span>	Medial wall
<span style="color: yellow;">█</span>	Posterior wall

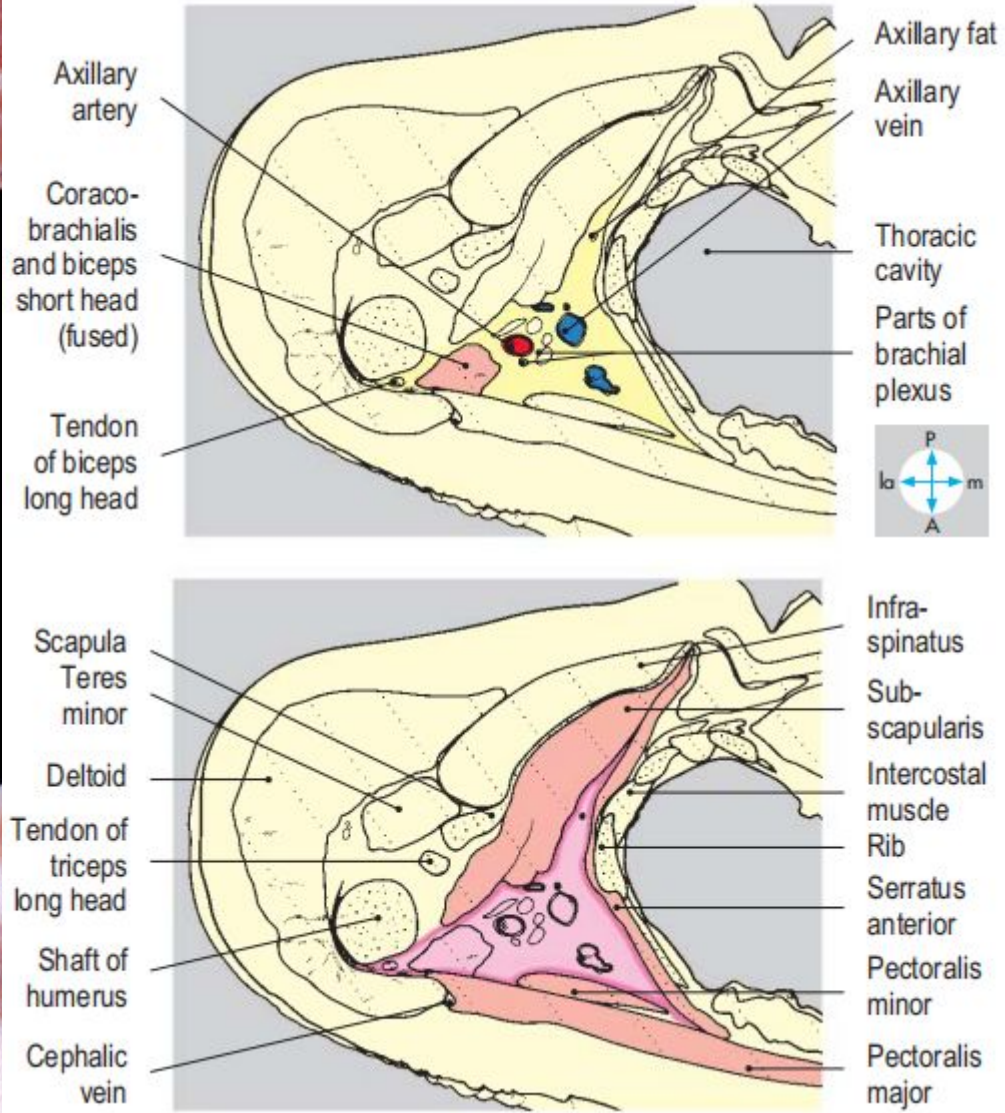
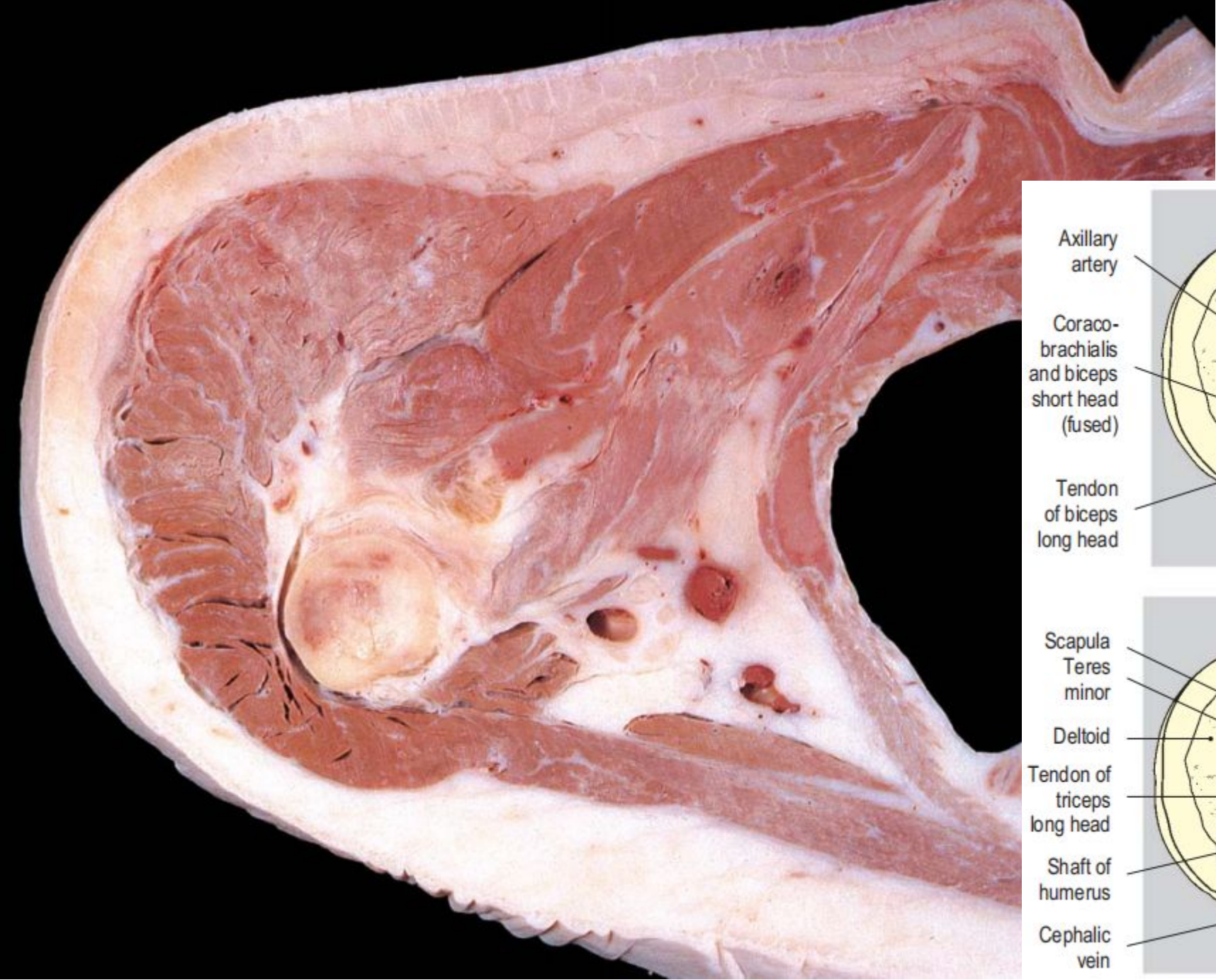


# Fossa axillaris

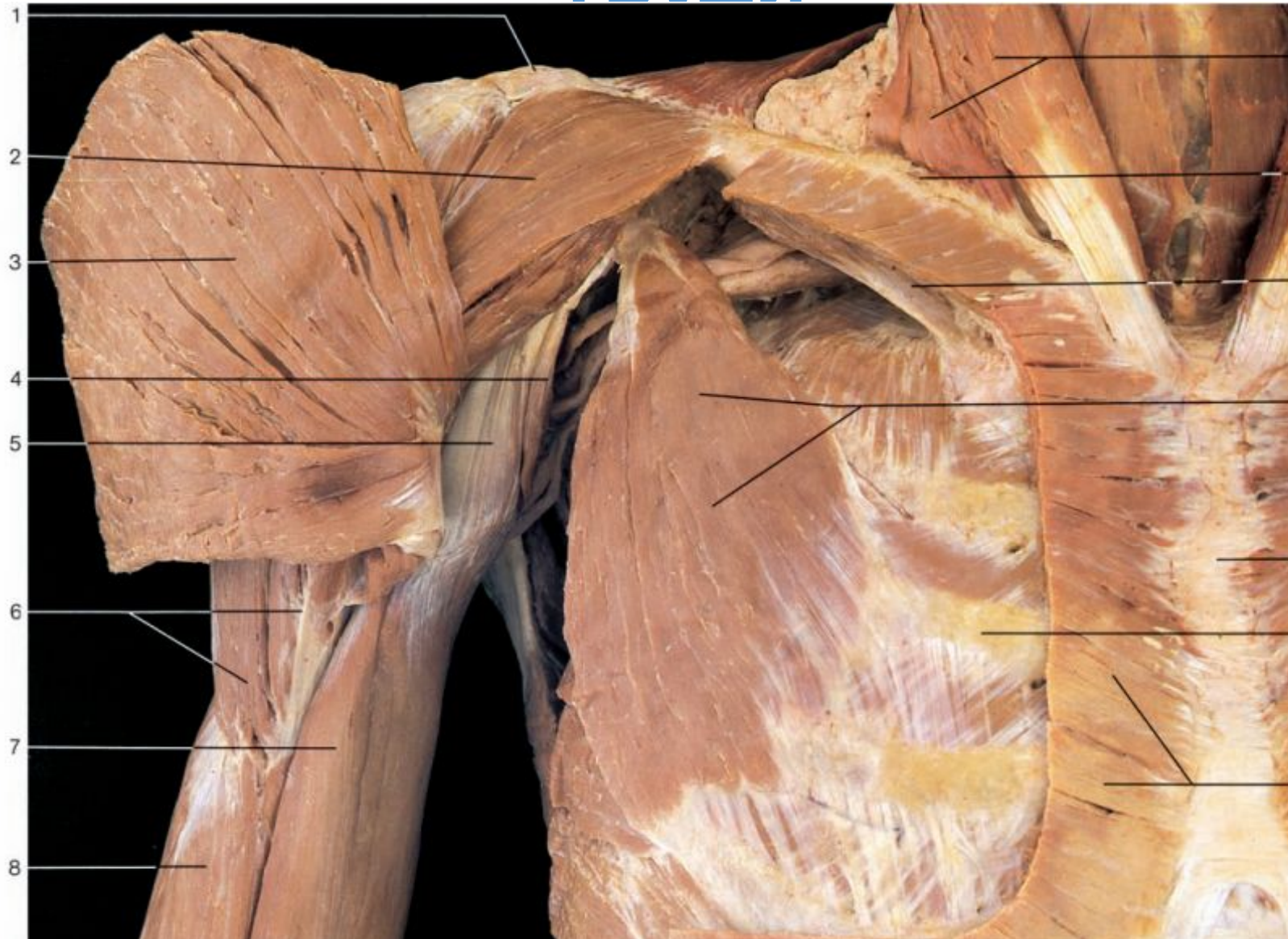
- 1 Acromion
- 2 Clavicular part of deltoid muscle
- 3 Pectoralis major muscle (reflected)
- 4 Coracobrachialis muscle
- 5 Short head of biceps brachii muscle
- 6 Deltoid muscle (insertion on humerus)
- 7 Long head of biceps brachii muscle
- 8 Brachialis muscle
- 9 Sternocleidomastoid muscle
- 10 Clavicle
- 11 Subclavius muscle
- 12 Pectoralis minor muscle
- 13 Sternum
- 14 Third rib
- 15 Pectoralis major muscle (cut)
- 16 Platysma muscle
- 17 Pectoralis major muscle forming the anterior axillary fold
- 18 Anterior cutaneous branches of intercostal nerves
- 19 Lateral cutaneous branches of intercostal nerves
- 20 Rectus abdominis muscle
- 21 Subscapularis muscle
- 22 Latissimus dorsi muscle forming the posterior axillary fold
- 23 Serratus anterior muscle forming the medial wall of the axilla
- 24 External abdominal oblique muscle



# Fossa axillaris

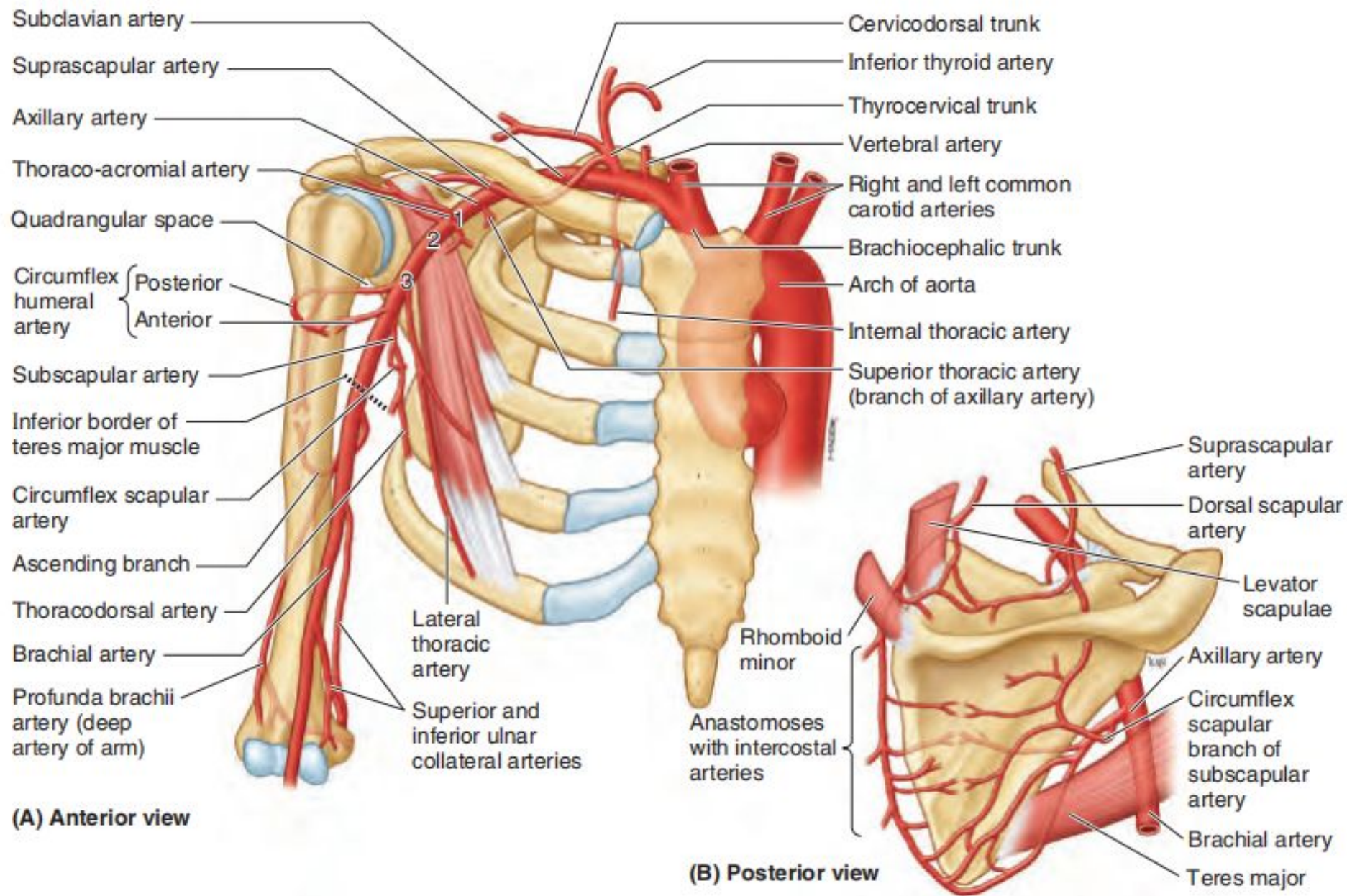


# Вспоминаем треугольники груди

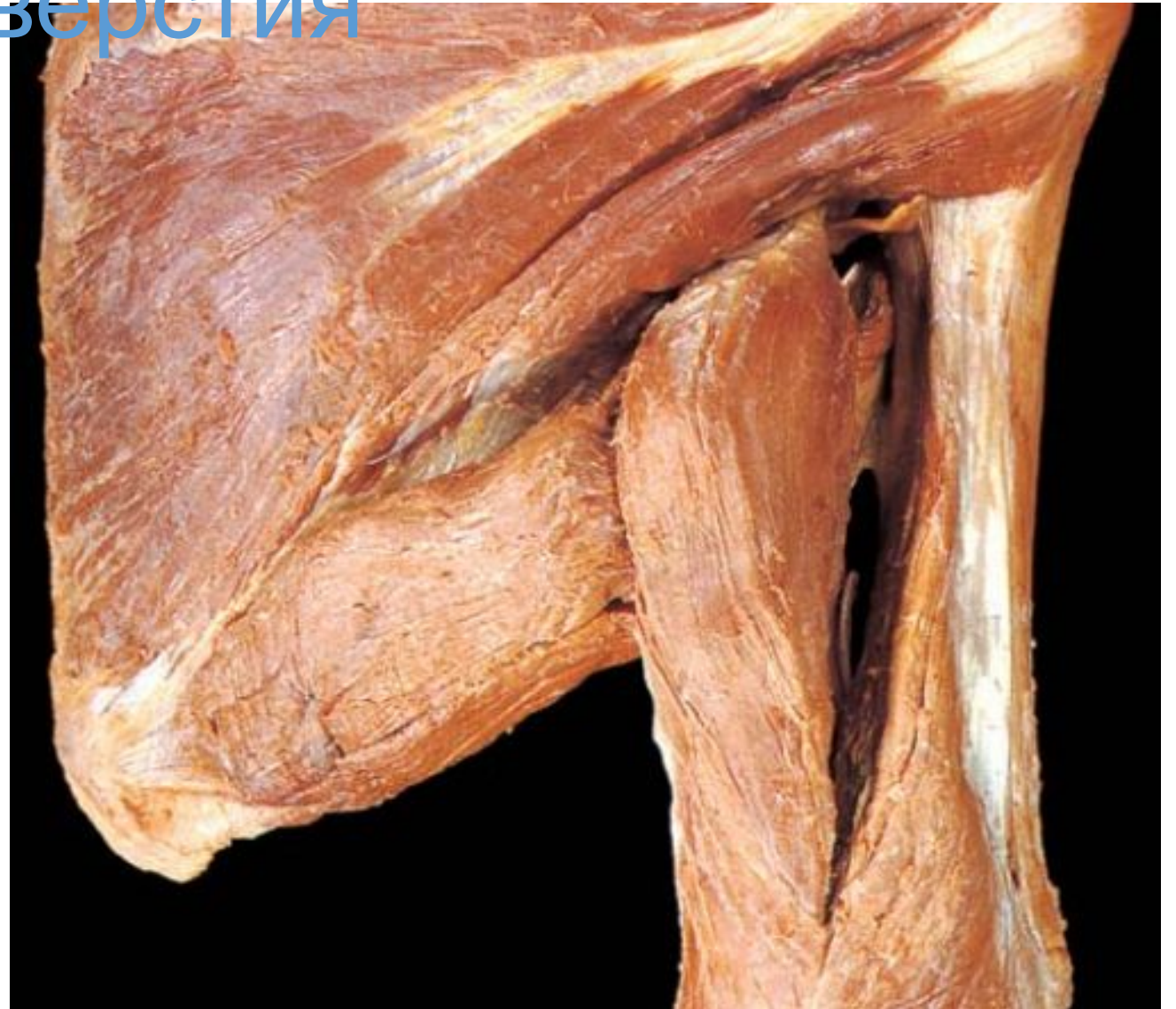
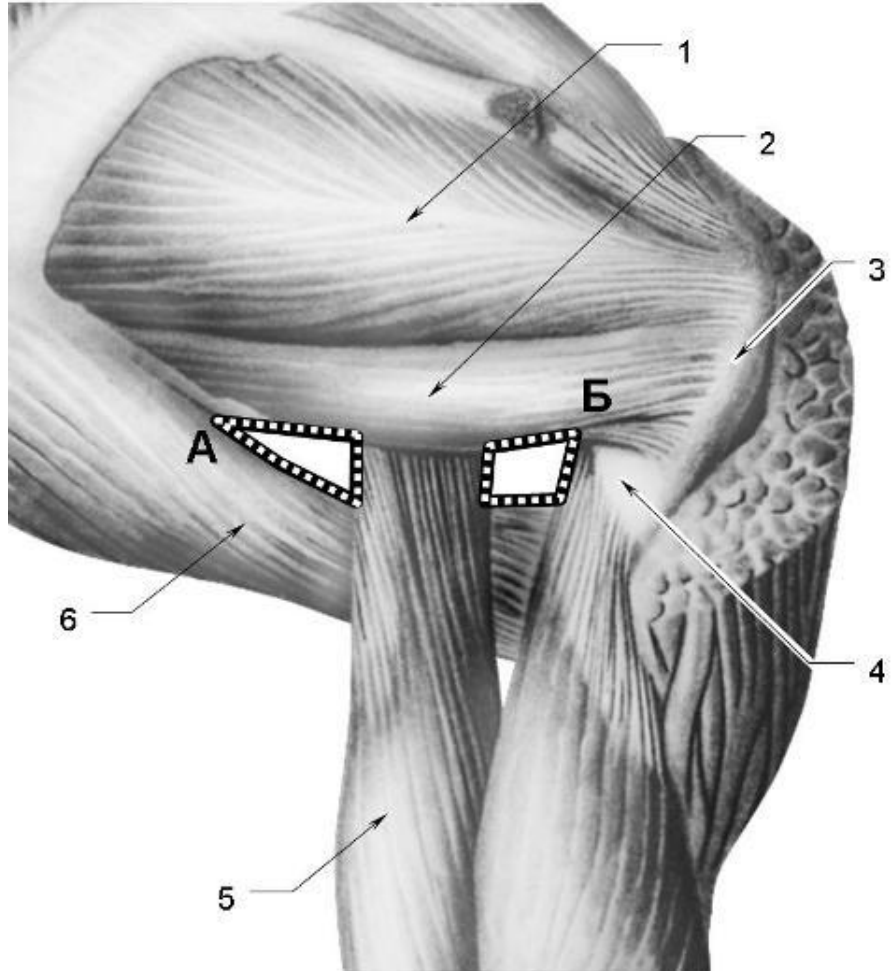


- 1 Acromion
- 2 Clavicular part of deltoid muscle
- 3 Pectoralis major muscle (reflected)
- 4 Coracobrachialis muscle
- 5 Short head of biceps brachii muscle
- 6 Deltoid muscle (insertion on humerus)
- 7 Long head of biceps brachii muscle
- 8 Brachialis muscle
- 9 Sternocleidomastoid muscle
- 10 Clavicle
- 11 Subclavius muscle
- 12 Pectoralis minor muscle
- 13 Sternum
- 14 Third rib
- 15 Pectoralis major muscle (cut)
- 16 Platysma muscle
- 17 Pectoralis major muscle forming the anterior axillary fold
- 18 Anterior cutaneous branches of intercostal nerves
- 19 Lateral cutaneous branches of intercostal nerves
- 20 Rectus abdominis muscle
- 21 Subscapularis muscle
- 22 Latissimus dorsi muscle forming the posterior axillary fold
- 23 Serratus anterior muscle forming the medial wall of the axilla
- 24 External abdominal oblique muscle

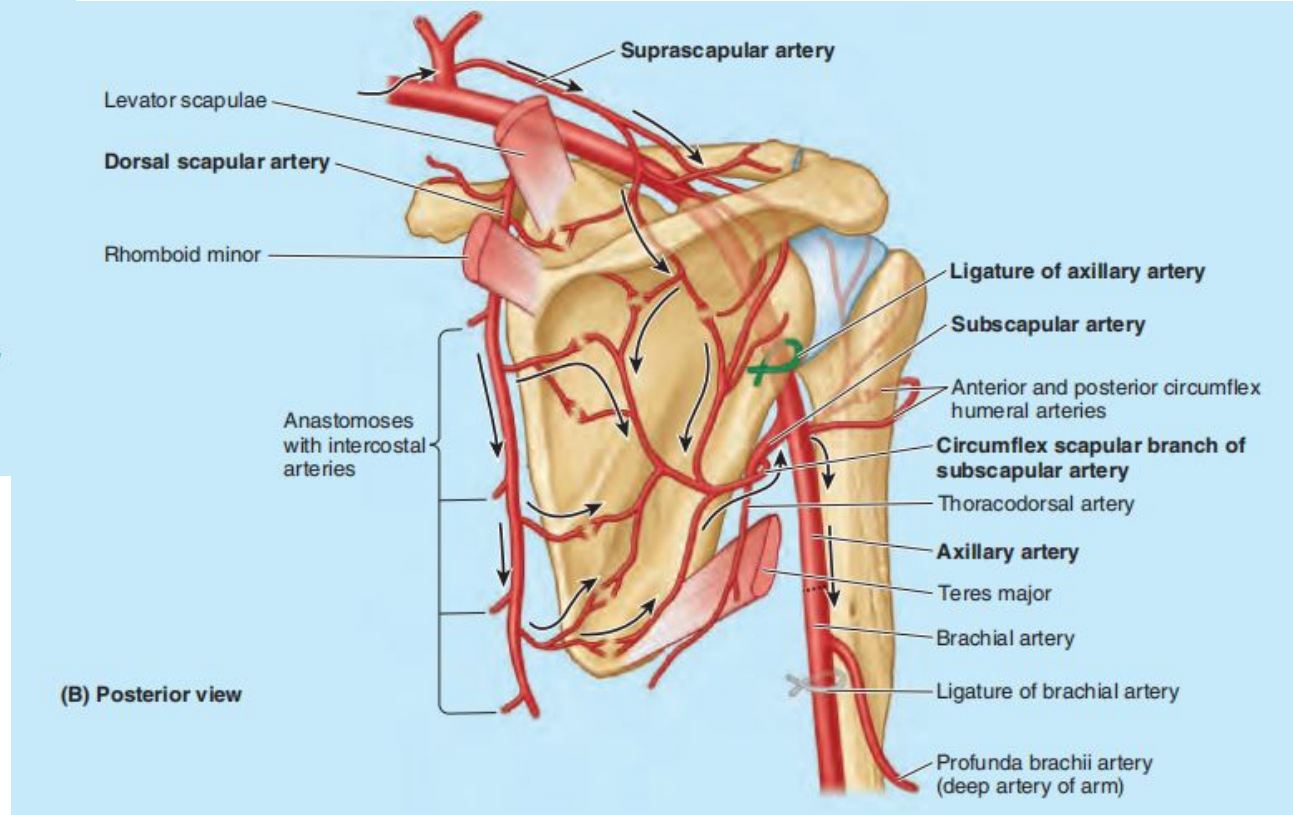
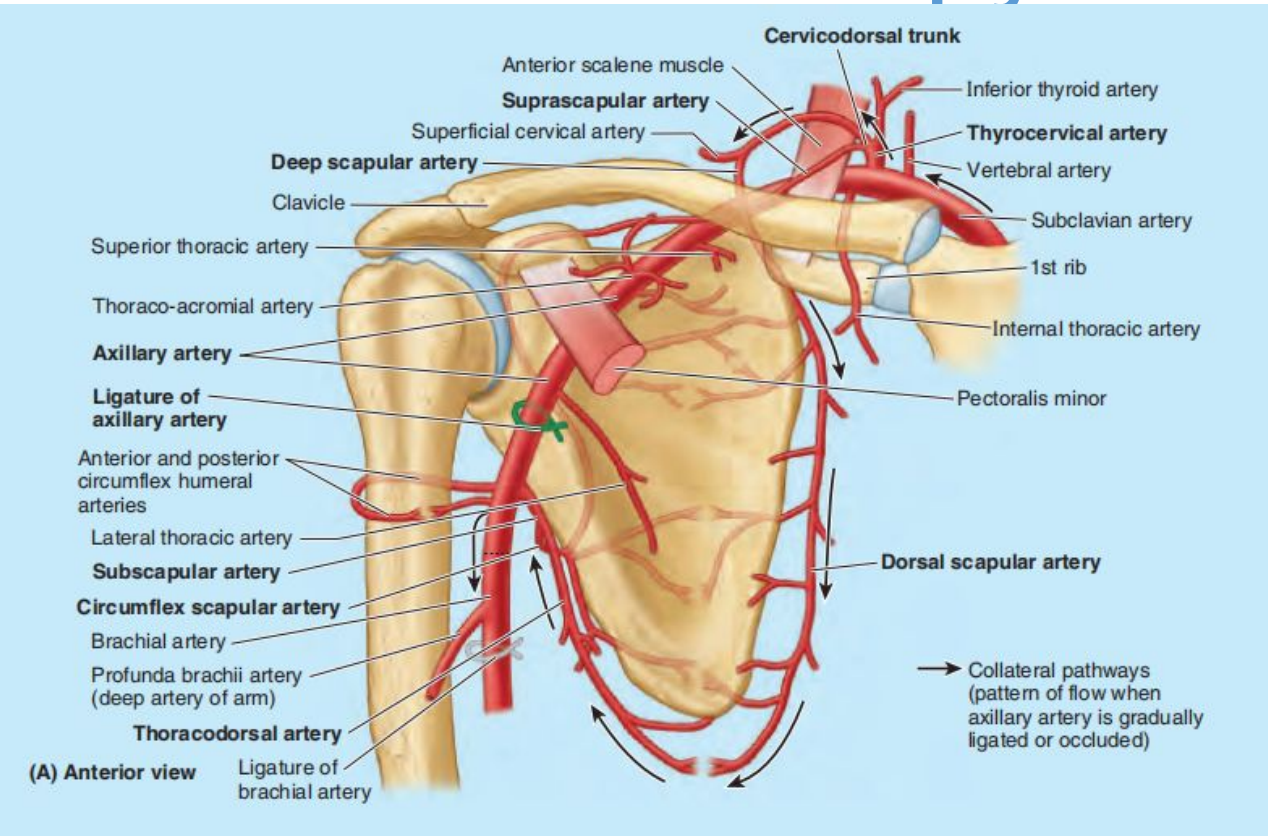
# ПОДМЫШЕЧНАЯ АРТЕРИЯ



# Вспоминаем трехстороннее и четырехстороннее отверстия

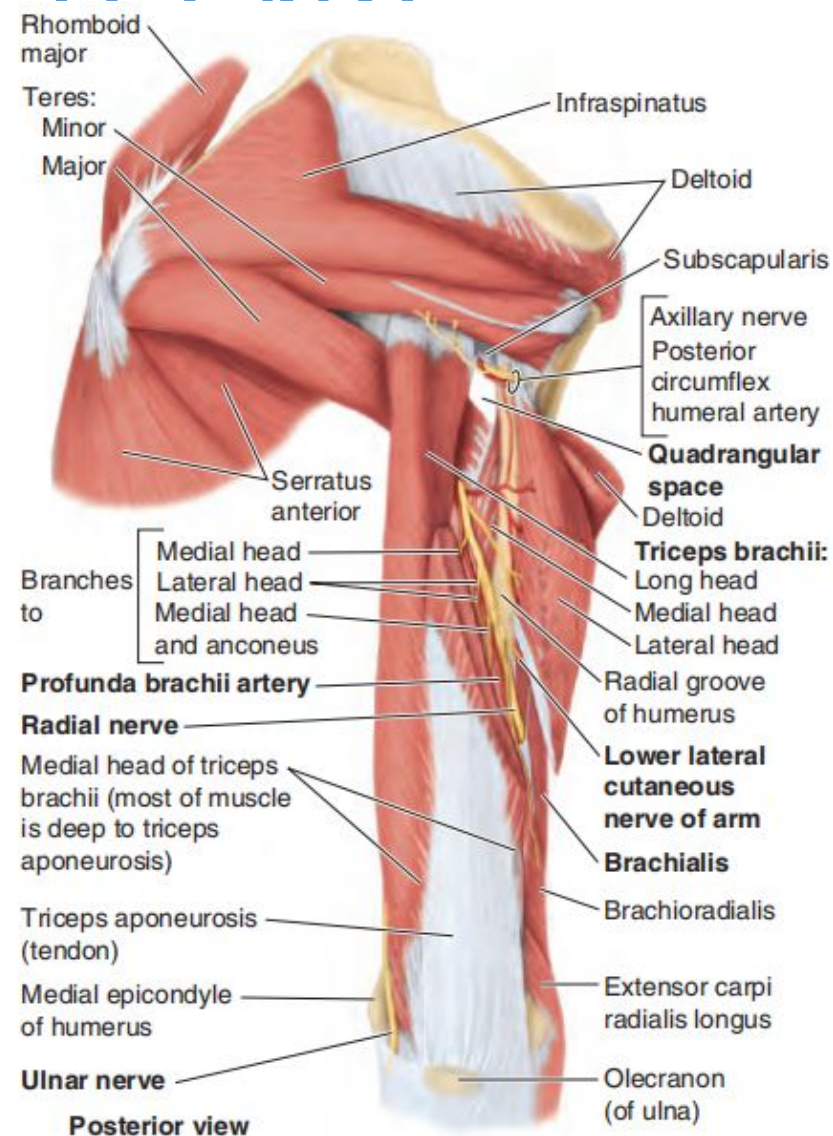
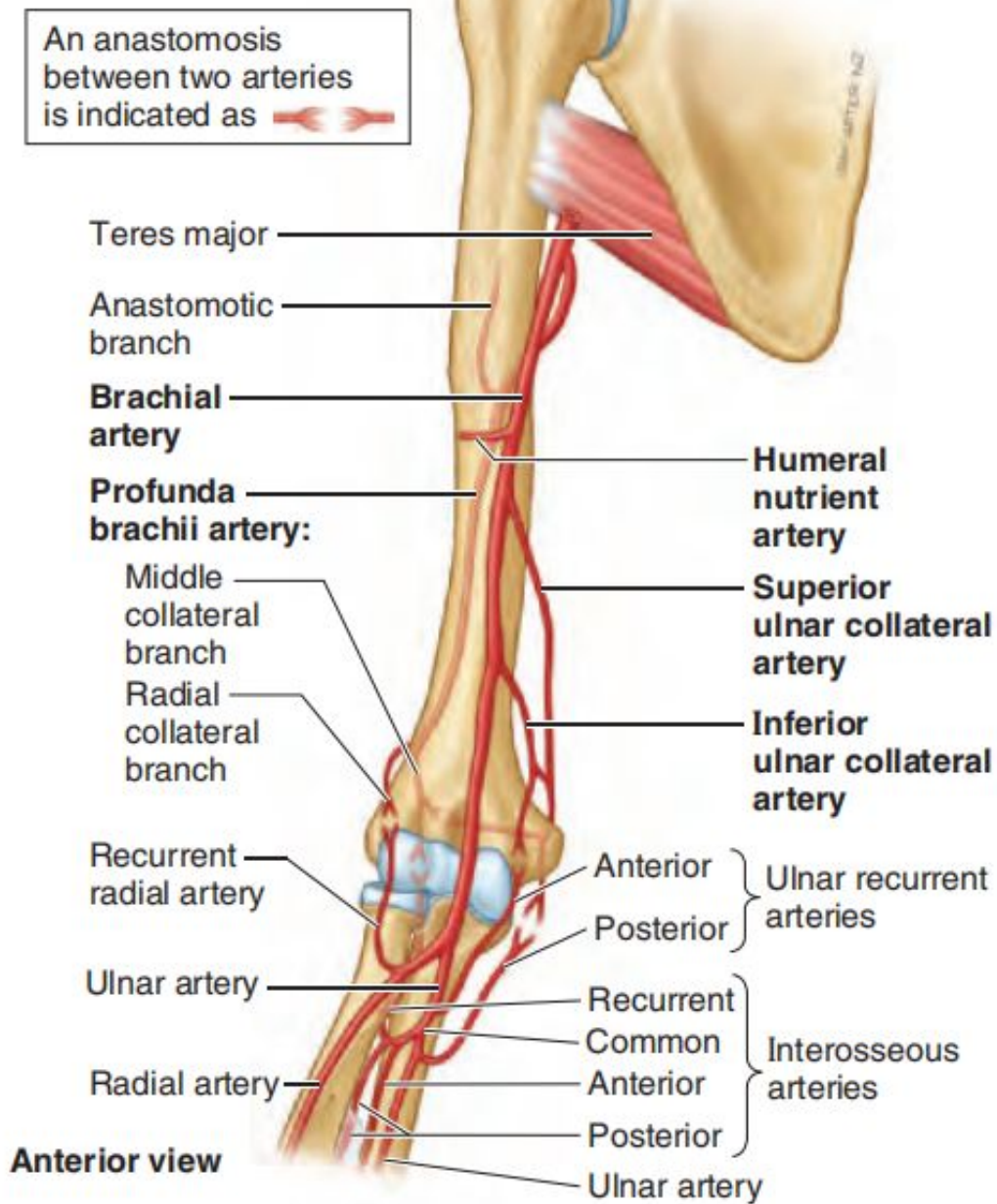


# Анастомозы вокруг лопатки

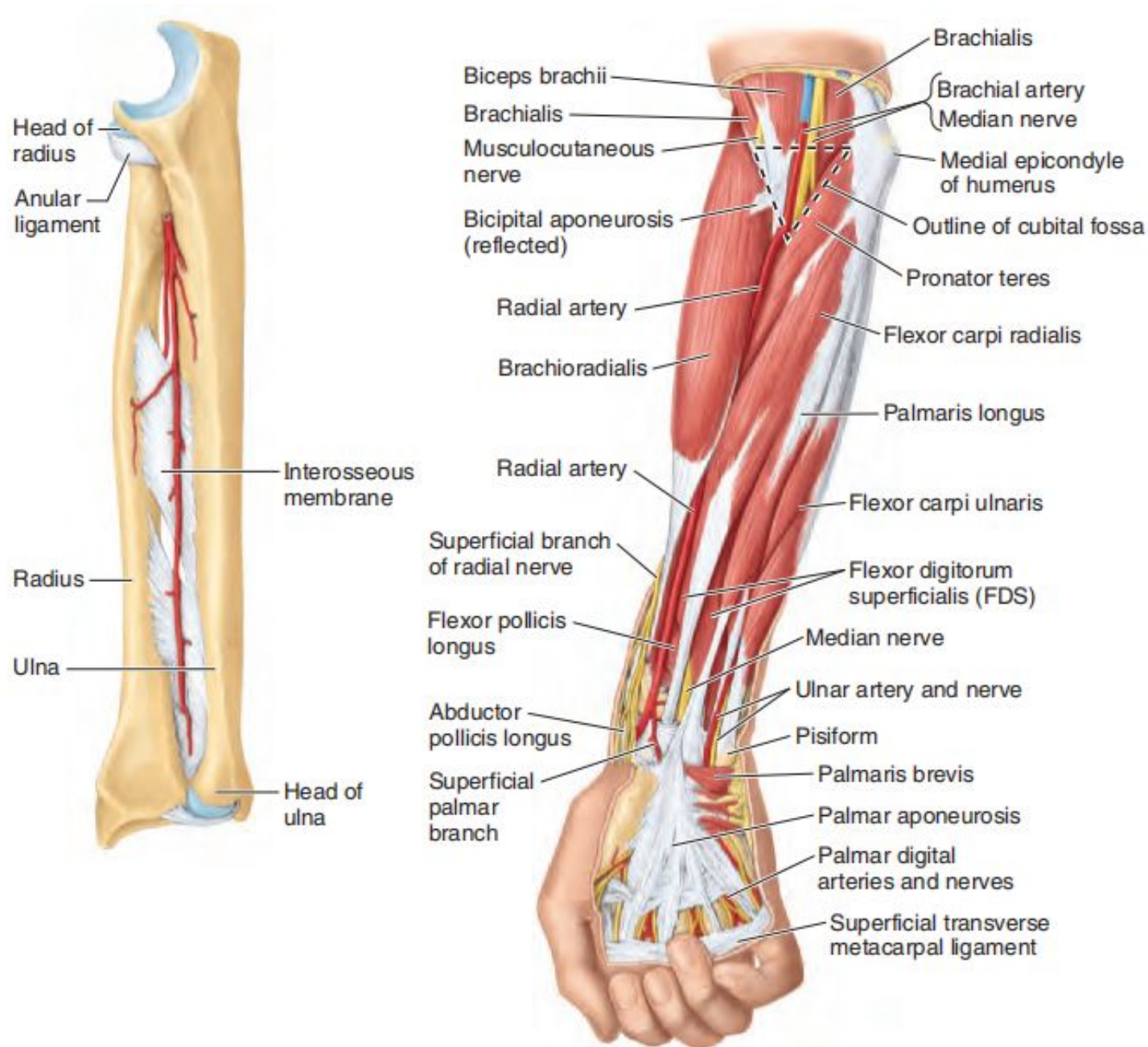


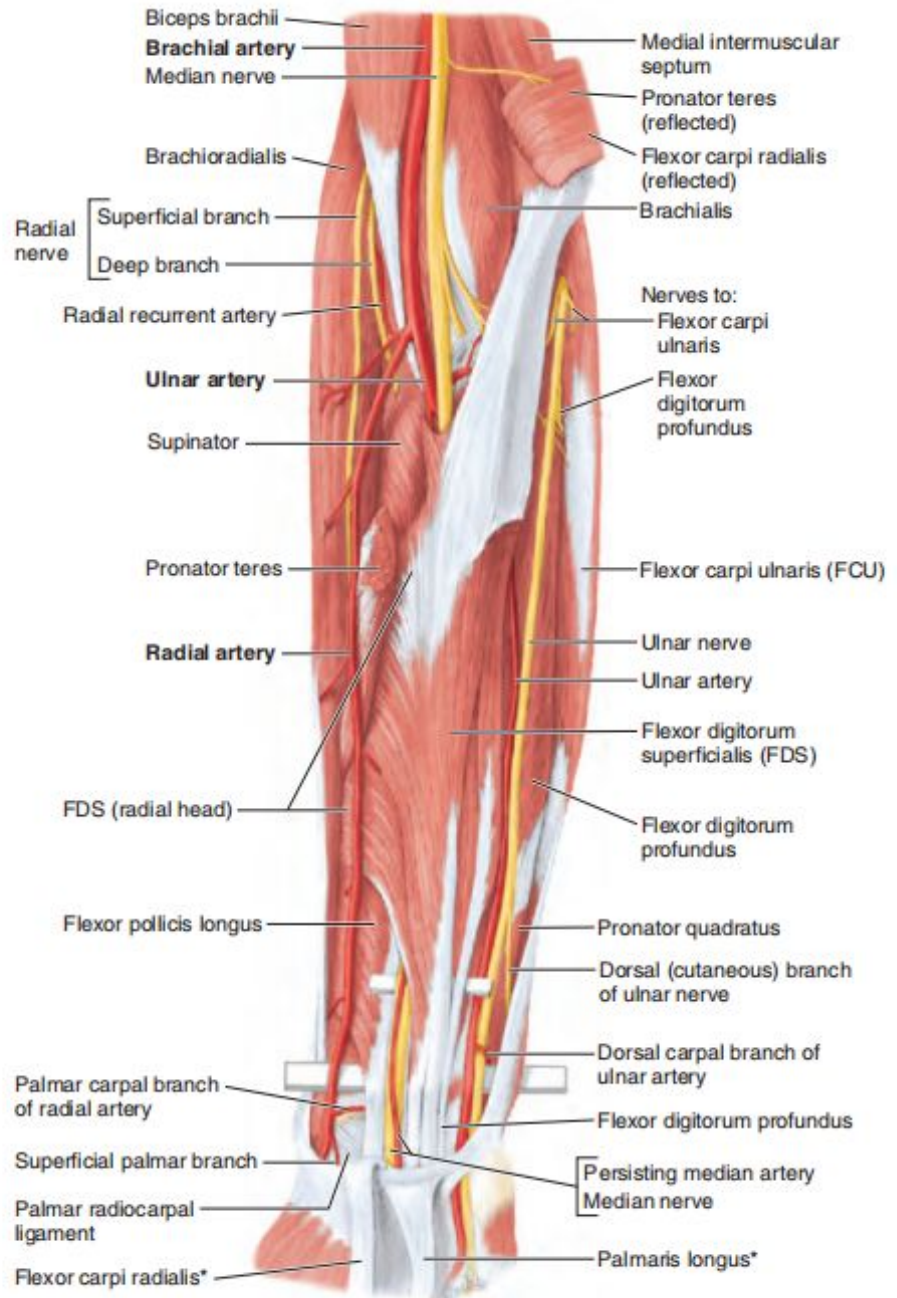


# ПЛЕЧЕВАЯ АРТЕРИЯ



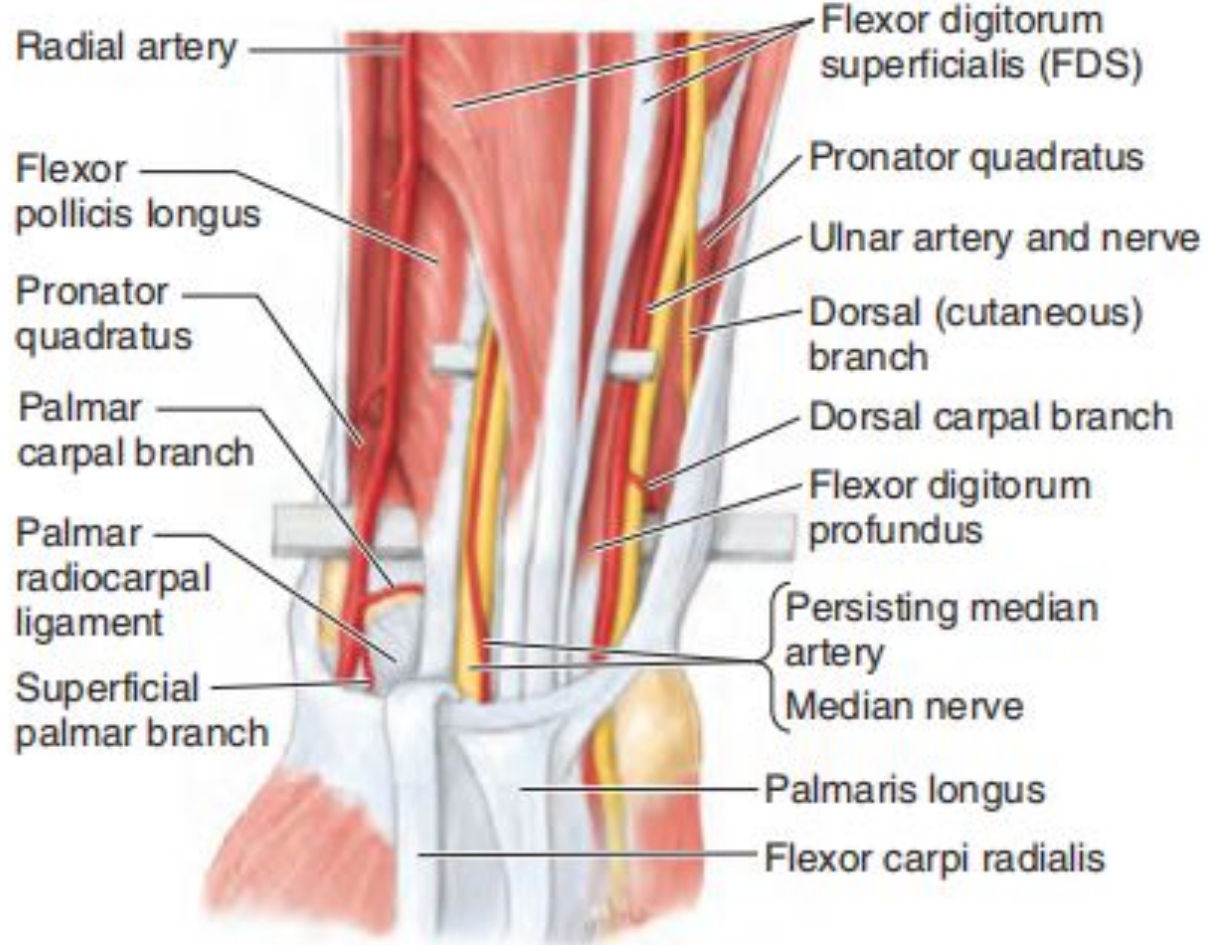
# АРТЕРИИ ПРЕДПЛЕЧЬЯ





**Anterior view**

\* Reflected distally



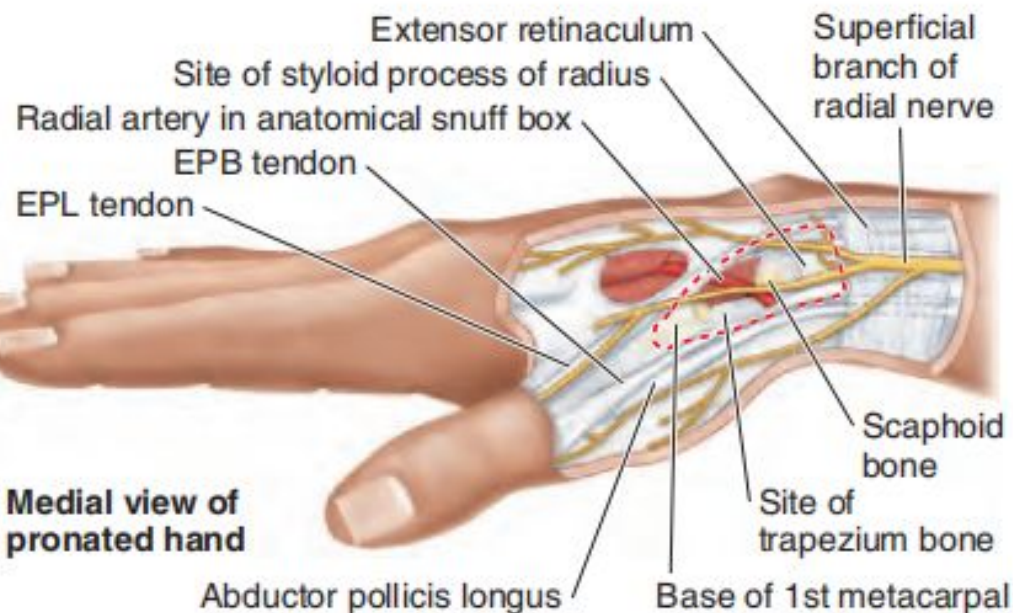
Extensor pollicis longus (EPL) tendon



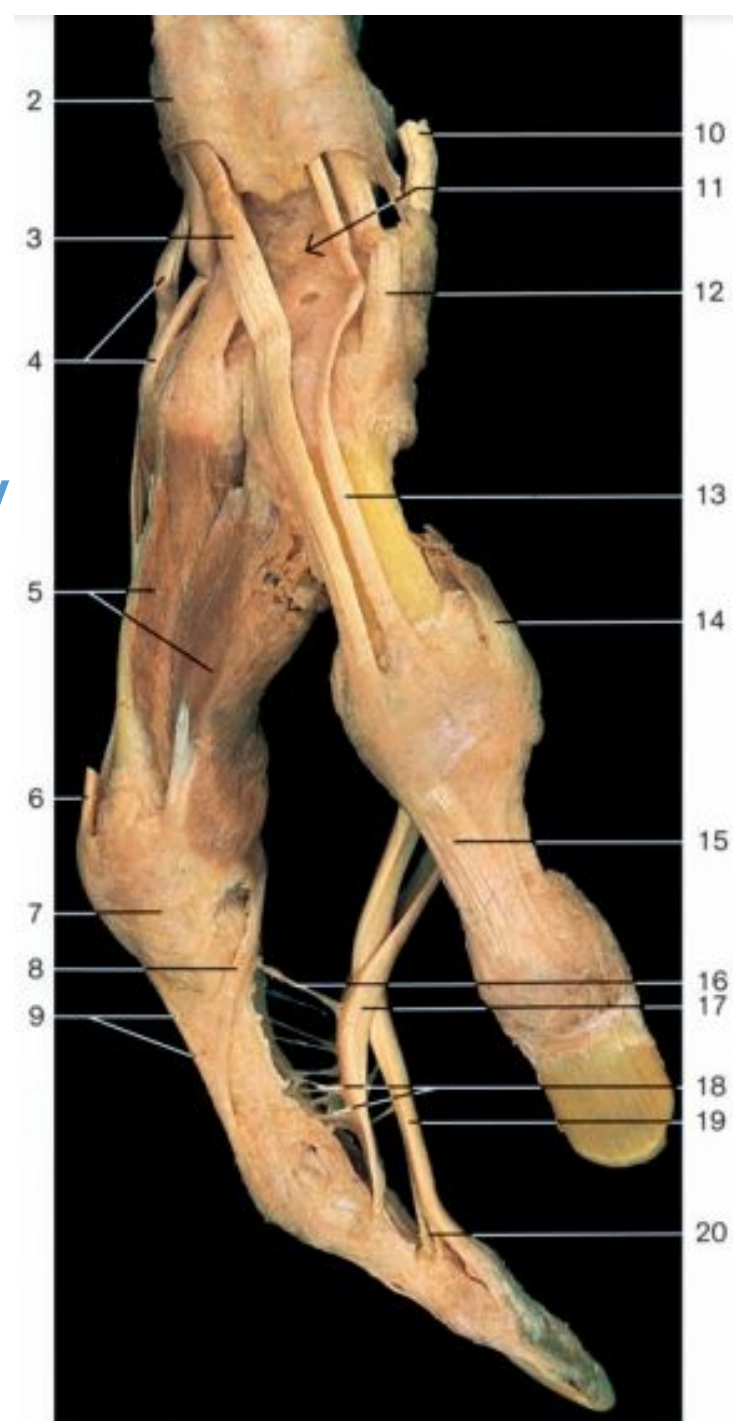
(A) Medial view of pronated hand

Extensor pollicis brevis (EPB) tendon  
Anatomical snuff box

Вспоминаем  
анатомическую  
табакерку

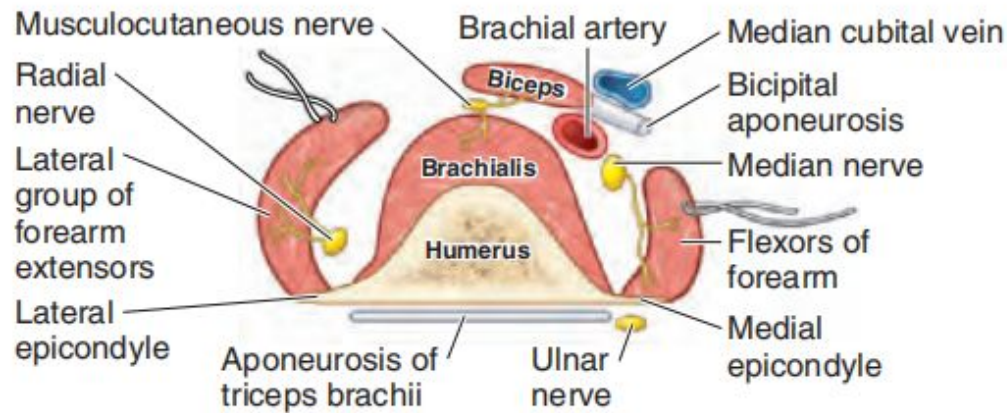


(B) Medial view of pronated hand

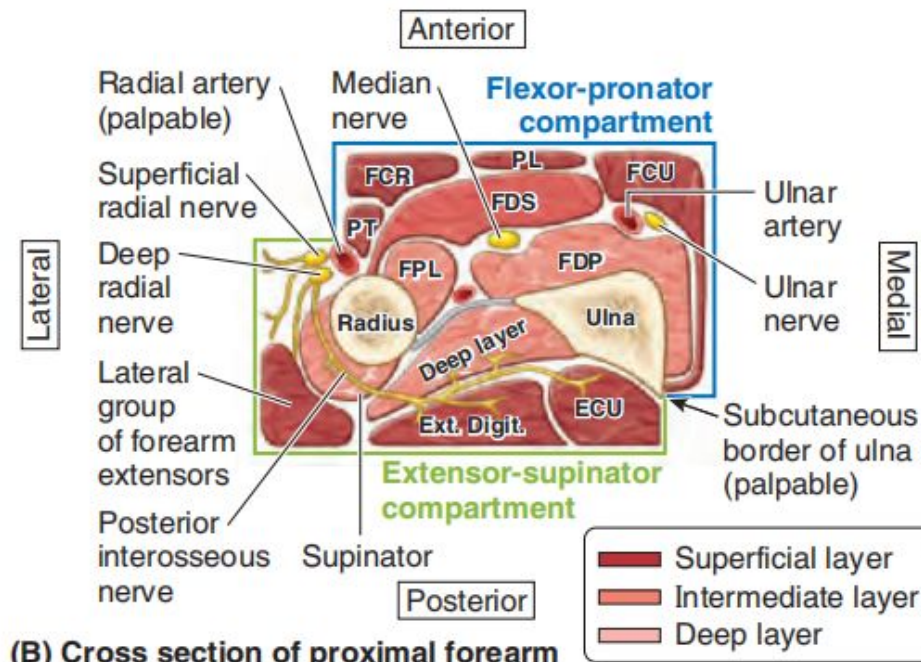


# Вспоминаем локтевые борозды

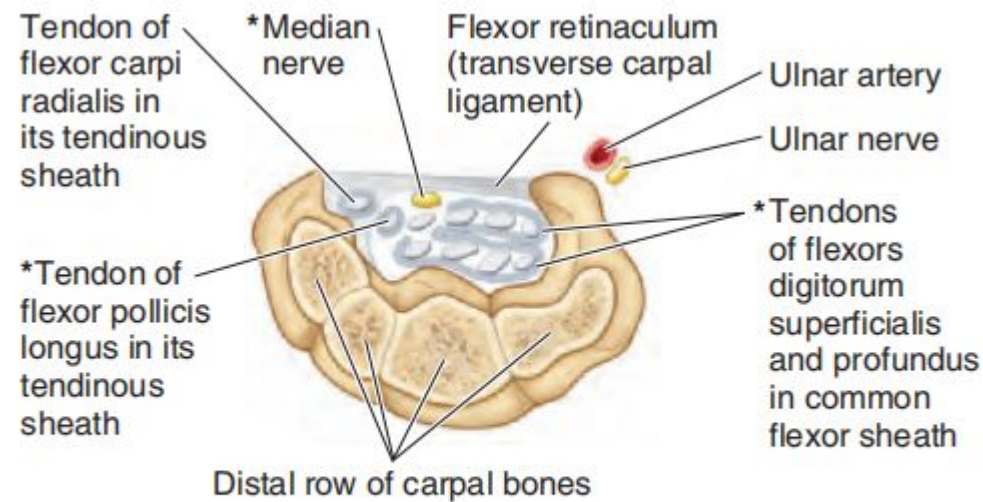




**(A) Cross section of cubital fossa**



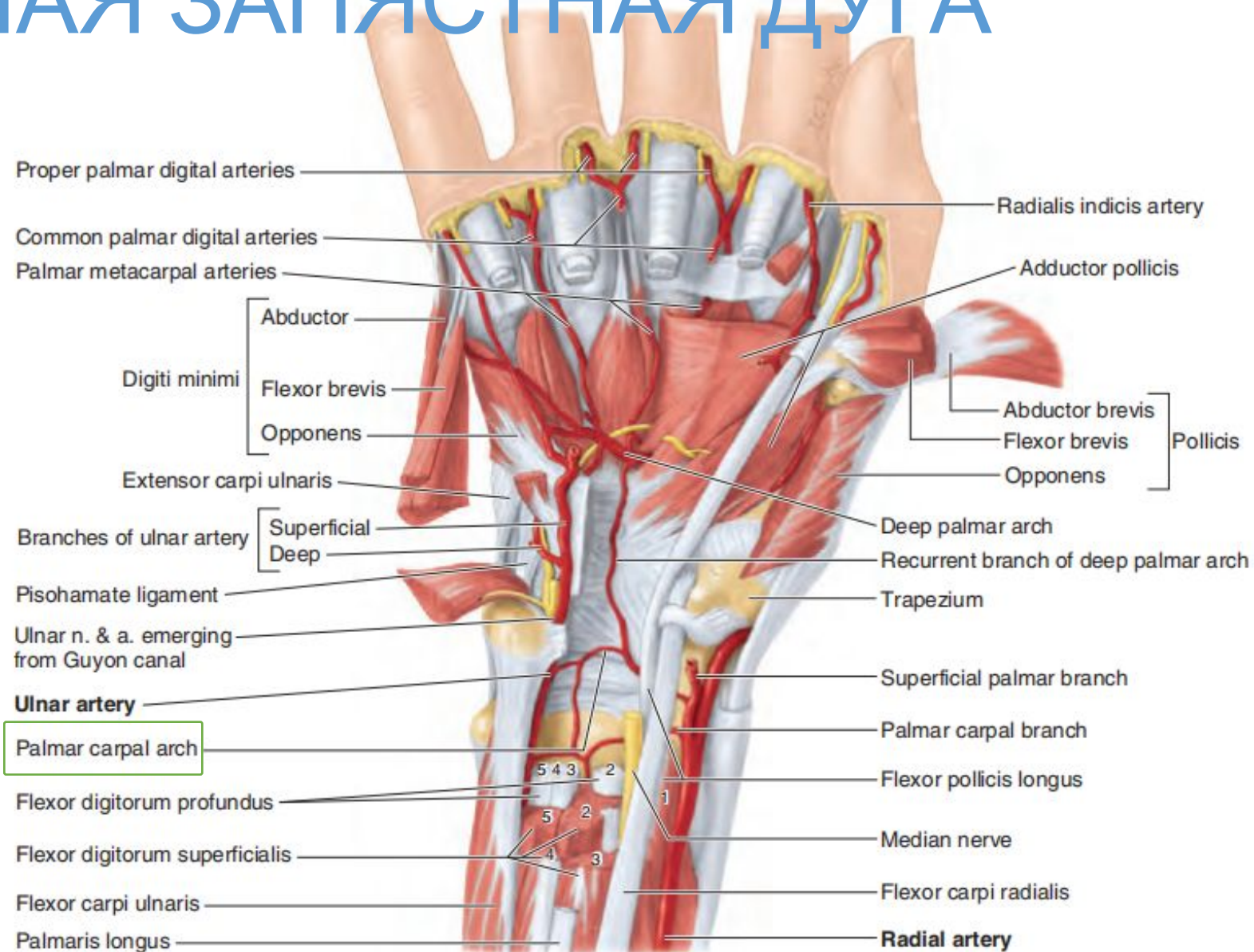
**(B) Cross section of proximal forearm**



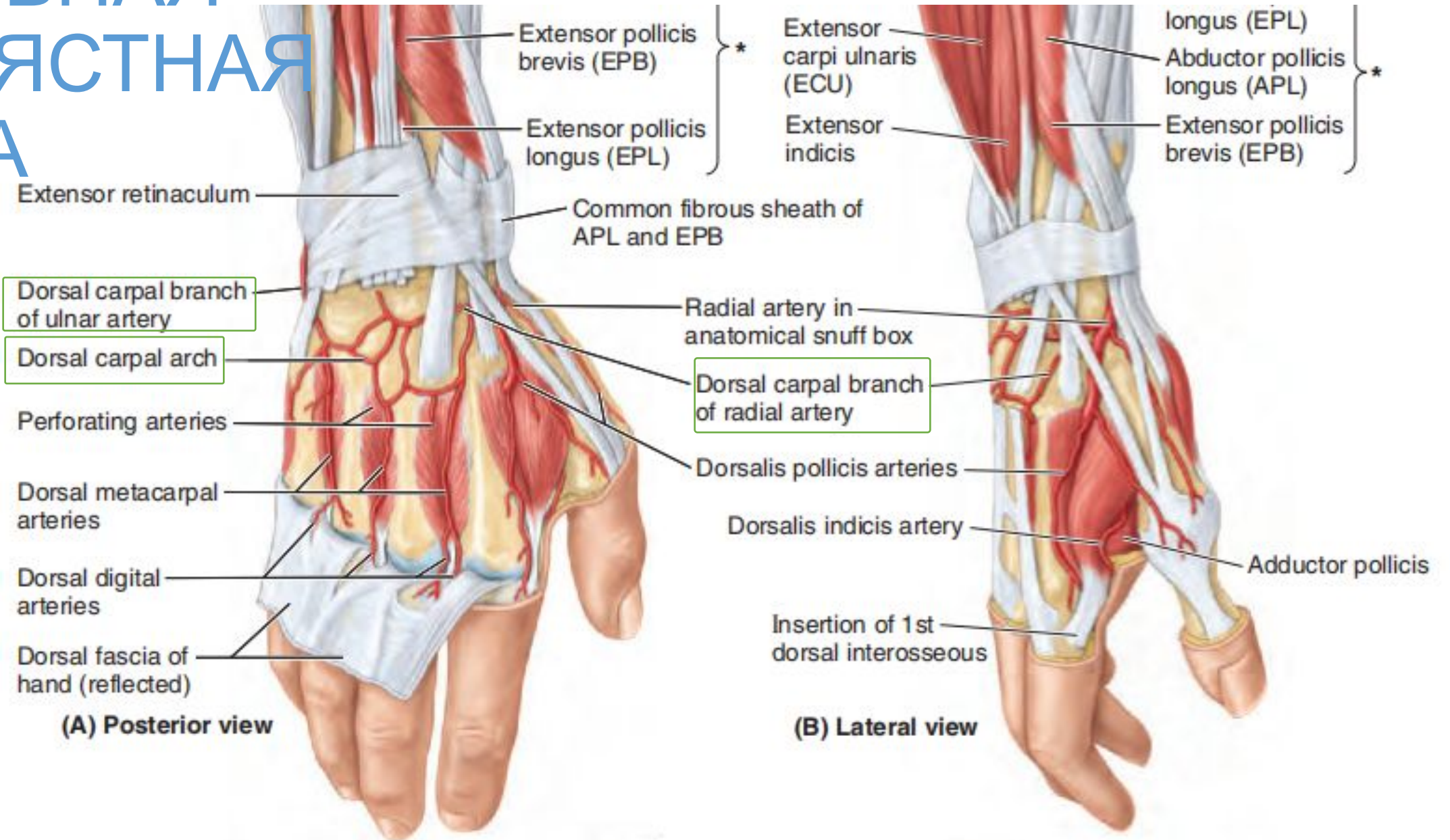
\*Structures traversing carpal tunnel

**(C) Cross section of carpus (wrist)**

# ЛАДОННАЯ ЗАПЯСТНАЯ ДУГА

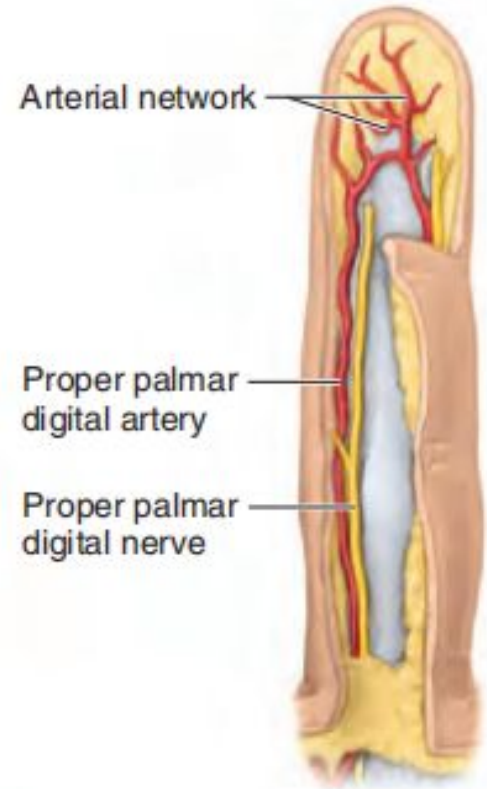
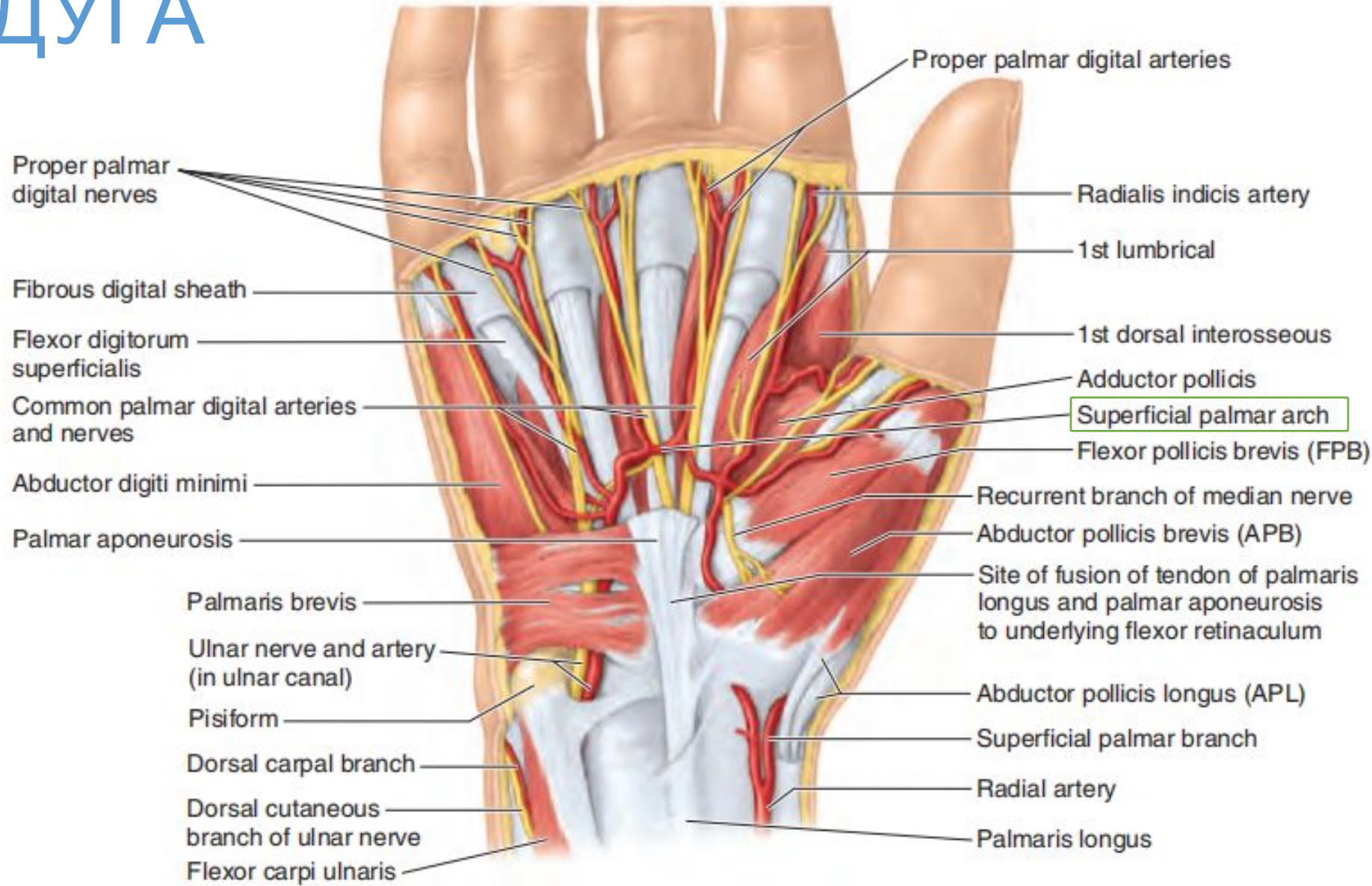


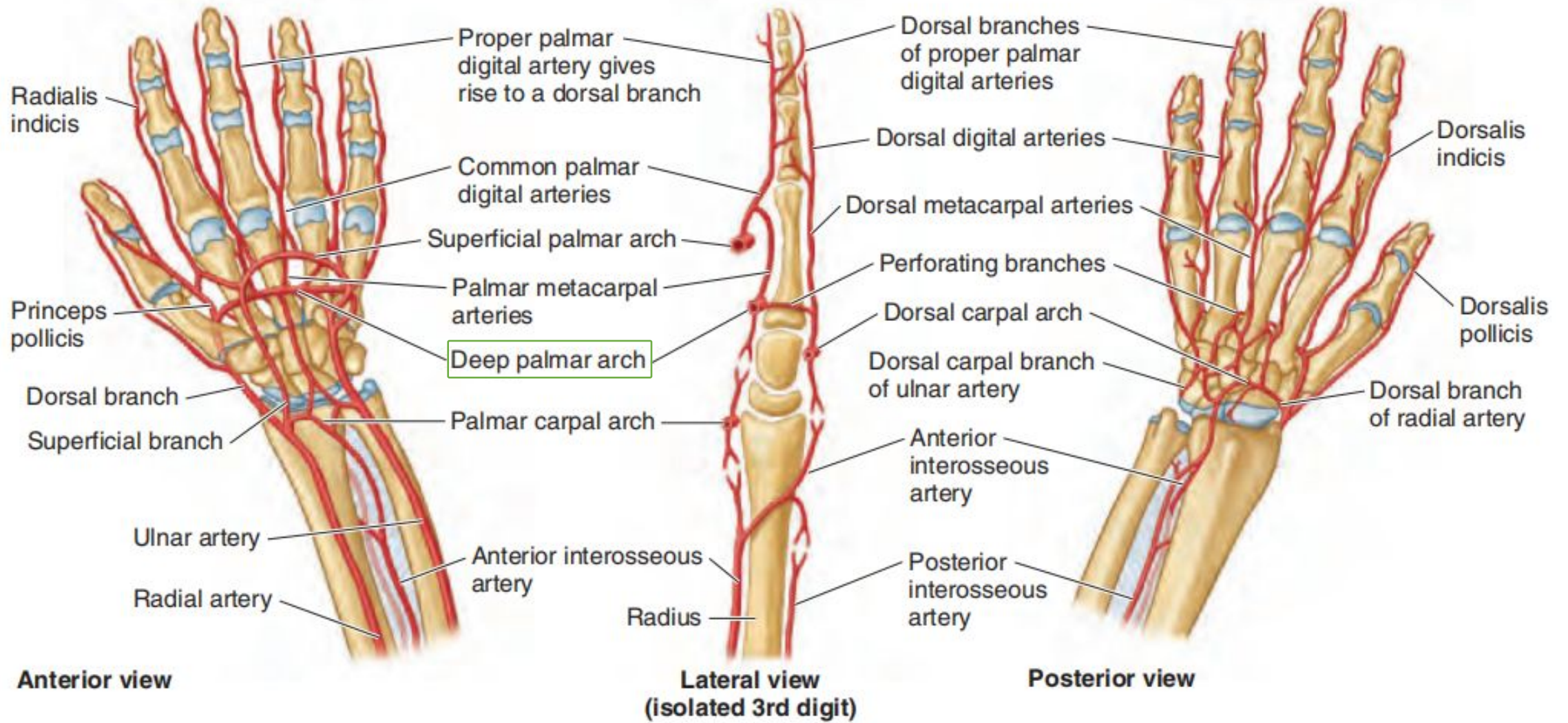
# ТЫЛЬНАЯ ЗАПЯСТНАЯ ДУГА



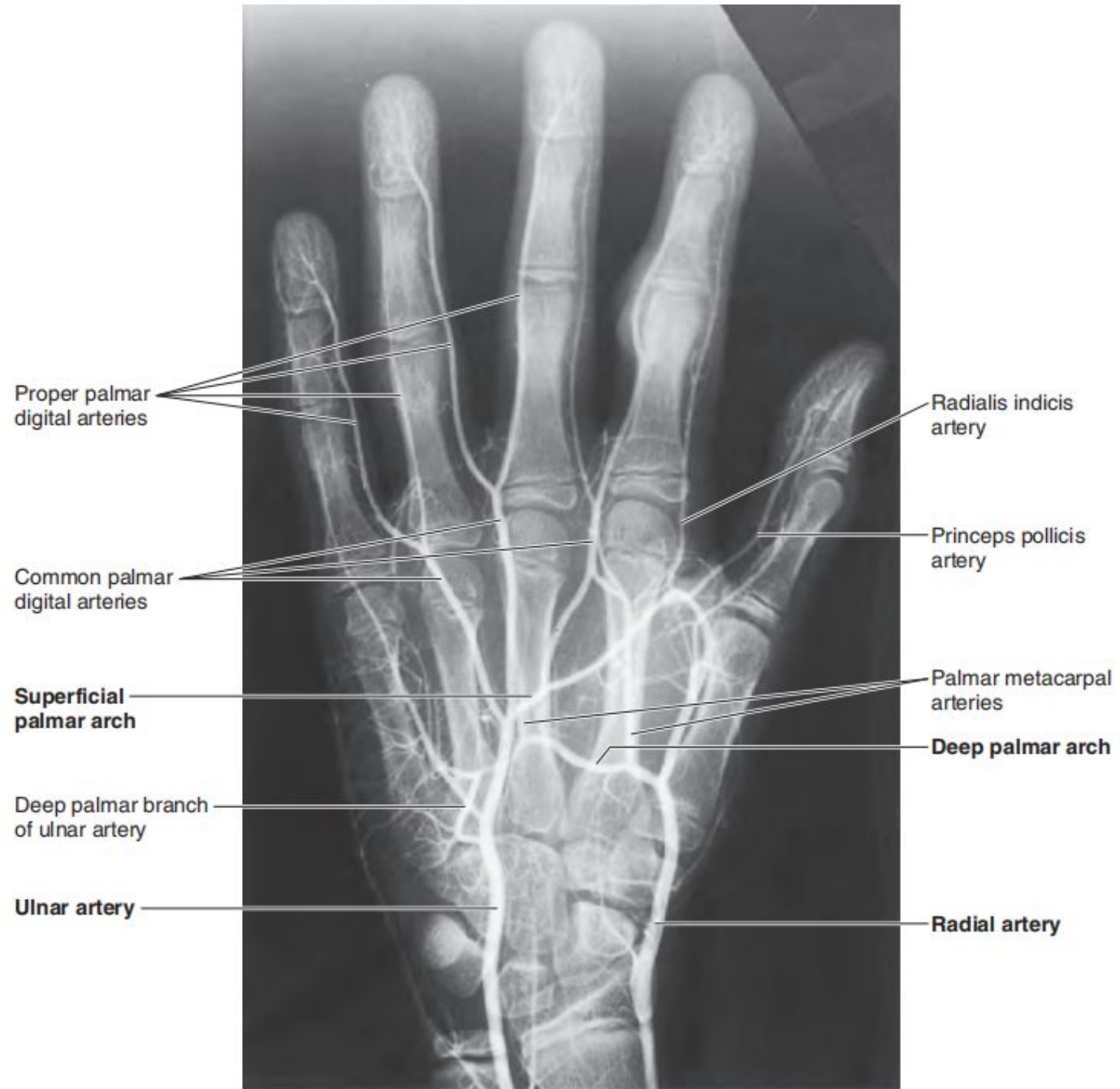


# ПОВЕРХНОСТНАЯ ЛАДОННАЯ ДУГА

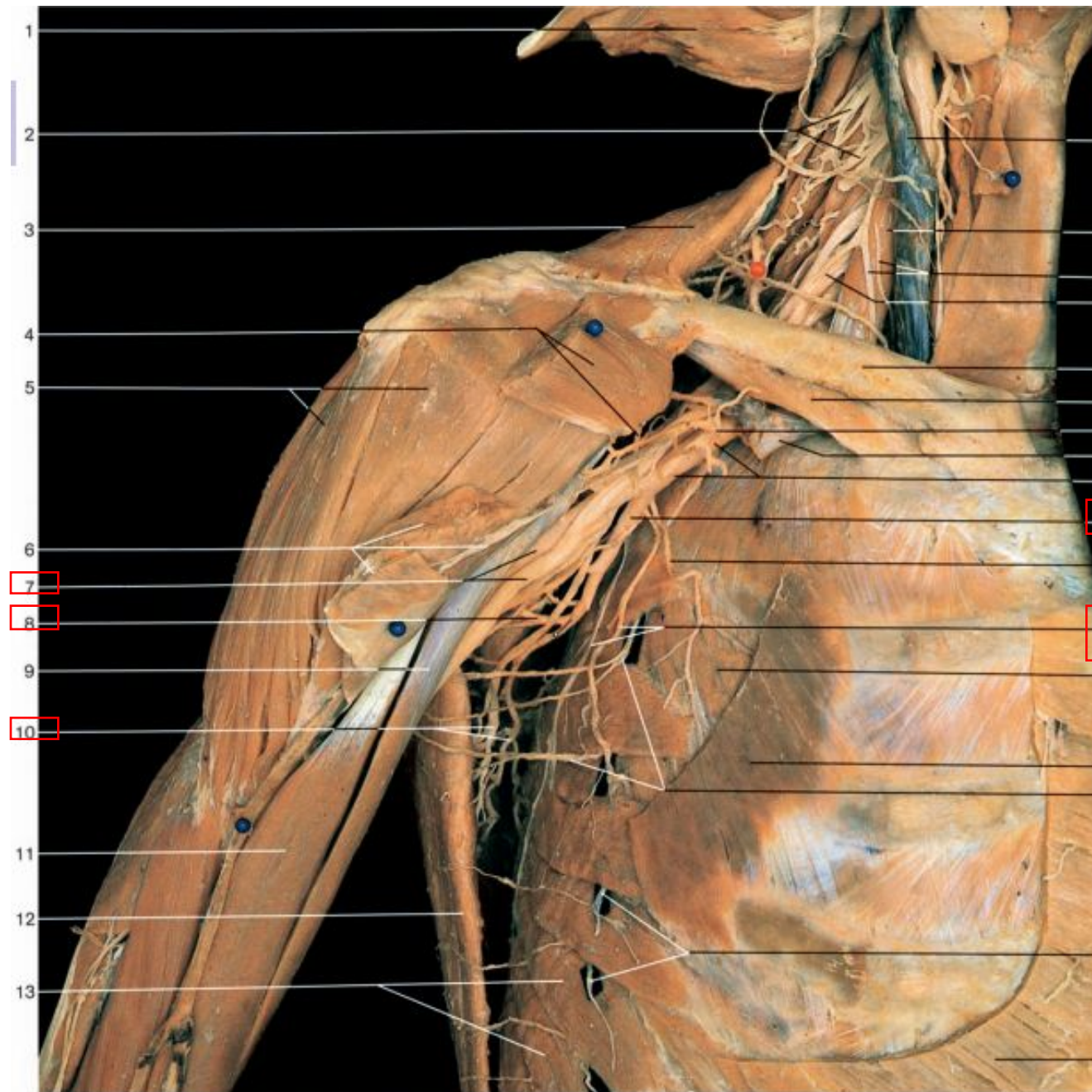




Arteries of wrist and hand.

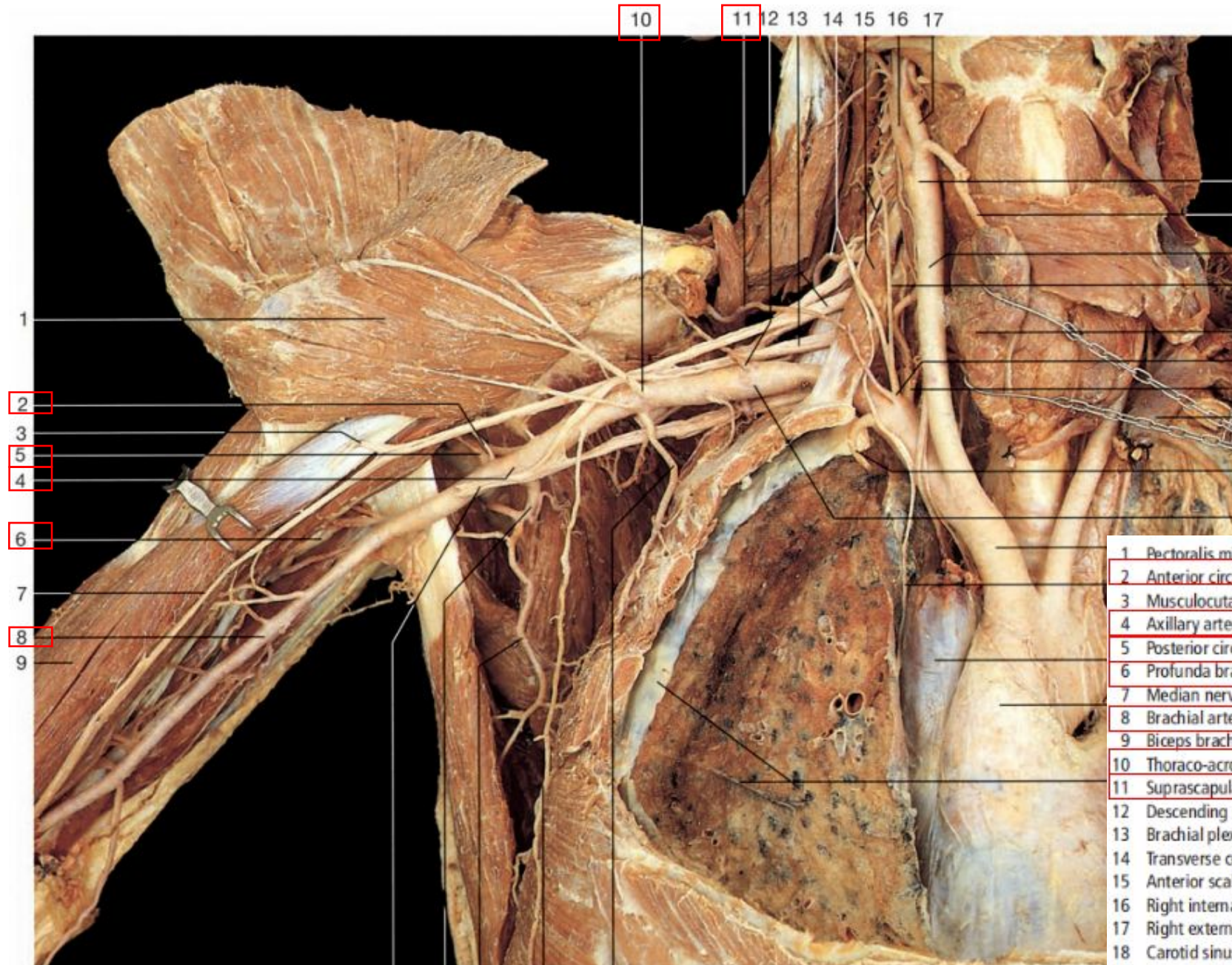


# Ветви подмышечной артерии



- 14 1 Sternocleidomastoid muscle (cut and reflected)
- 2 Cervical plexus
- 3 Trapezius muscle
- 15 4 Pectoralis minor muscle and medial pectoral nerve
- 16 5 Deltoid muscle
- 17 6 Pectoralis major muscle and lateral pectoral nerve
- 7 Median nerve and brachial artery
- 8 Circumflex scapular artery
- 18 9 Short head of biceps brachii muscle
- 10 Thoracodorsal artery and nerve
- 20 11 Long head of biceps brachii muscle
- 21 12 Latissimus dorsi muscle
- 22 13 Serratus anterior muscle
- 23 14 Internal jugular vein
- 15 Anterior scalene muscle
- 25 16 Phrenic nerve and ascending cervical artery
- 26 17 Brachial plexus (at the levels of the trunks)
- 18 Clavicle
- 19 Subclavius muscle
- 20 Thoraco-acromial artery
- 28 21 Subclavian vein (cut)
- 22 Axillary artery
- 23 Subscapular artery
- 24 Superior thoracic artery
- 25 Lateral thoracic artery and long thoracic nerve
- 29 26 External intercostal muscle
- 27 Insertion of pectoralis minor muscle
- 28 Intercostobrachial nerves
- 29 Lateral cutaneous branches of intercostal nerves
- 30 30 Insertion of pectoralis major muscle

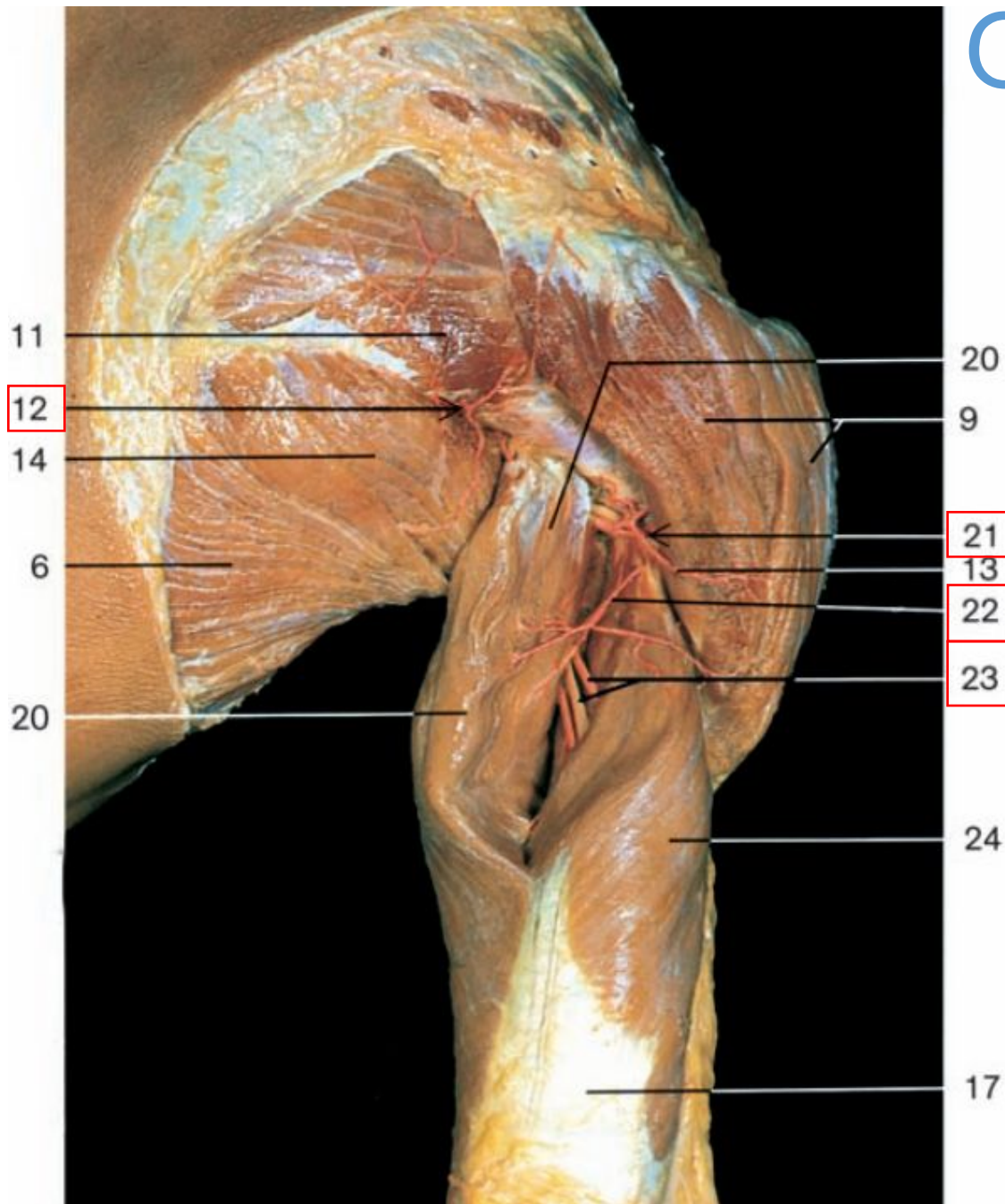
# Ветви подмышечно й артерии



- |  |  |
|--|--|
| 1 Pectoralis minor muscle (reflected)        | 22 Thyroid gland                             |
| 2 Anterior circumflex humeral artery         | 23 Inferior thyroid artery                   |
| 3 Musculocutaneous nerve (divided)           | 24 Internal thoracic artery                  |
| 4 Axillary artery                            | 25 Right subclavian artery                   |
| 5 Posterior circumflex humeral artery        | 26 Brachiocephalic trunk                     |
| 6 Profunda brachii artery                    | 27 Left brachiocephalic vein (divided)       |
| 7 Median nerve (var.)                        | 28 Left vagus nerve                          |
| 8 Brachial artery                            | 29 Superior vena cava (divided)              |
| 9 Biceps brachii muscle                      | 30 Ascending aorta                           |
| 10 Thoraco-acromial artery                   | 31 Median nerve (divided)                    |
| 11 Suprascapular artery                      | 32 Phrenic nerve                             |
| 12 Descending scapular artery                | 33 Right lung (divided) and pulmonary pleura |
| 13 Brachial plexus (middle trunk)            | 34 Thoracodorsal artery                      |
| 14 Transverse cervical artery                | 35 Subscapular artery                        |
| 15 Anterior scalene muscle and phrenic nerve | 36 Lateral mammary branches (var.)           |
| 16 Right internal carotid artery             | 37 Lateral thoracic artery                   |
| 17 Right external carotid artery             | 38 Thyrocervical trunk                       |
| 18 Carotid sinus                             | 39 Supreme intercostal artery                |
| 19 Superior thyroid artery                   | 40 Superior ulnar collateral artery          |
| 20 Right common carotid artery               | 41 Inferior ulnar collateral artery          |
| 21 Ascending cervical artery                 | 42 Middle collateral artery                  |

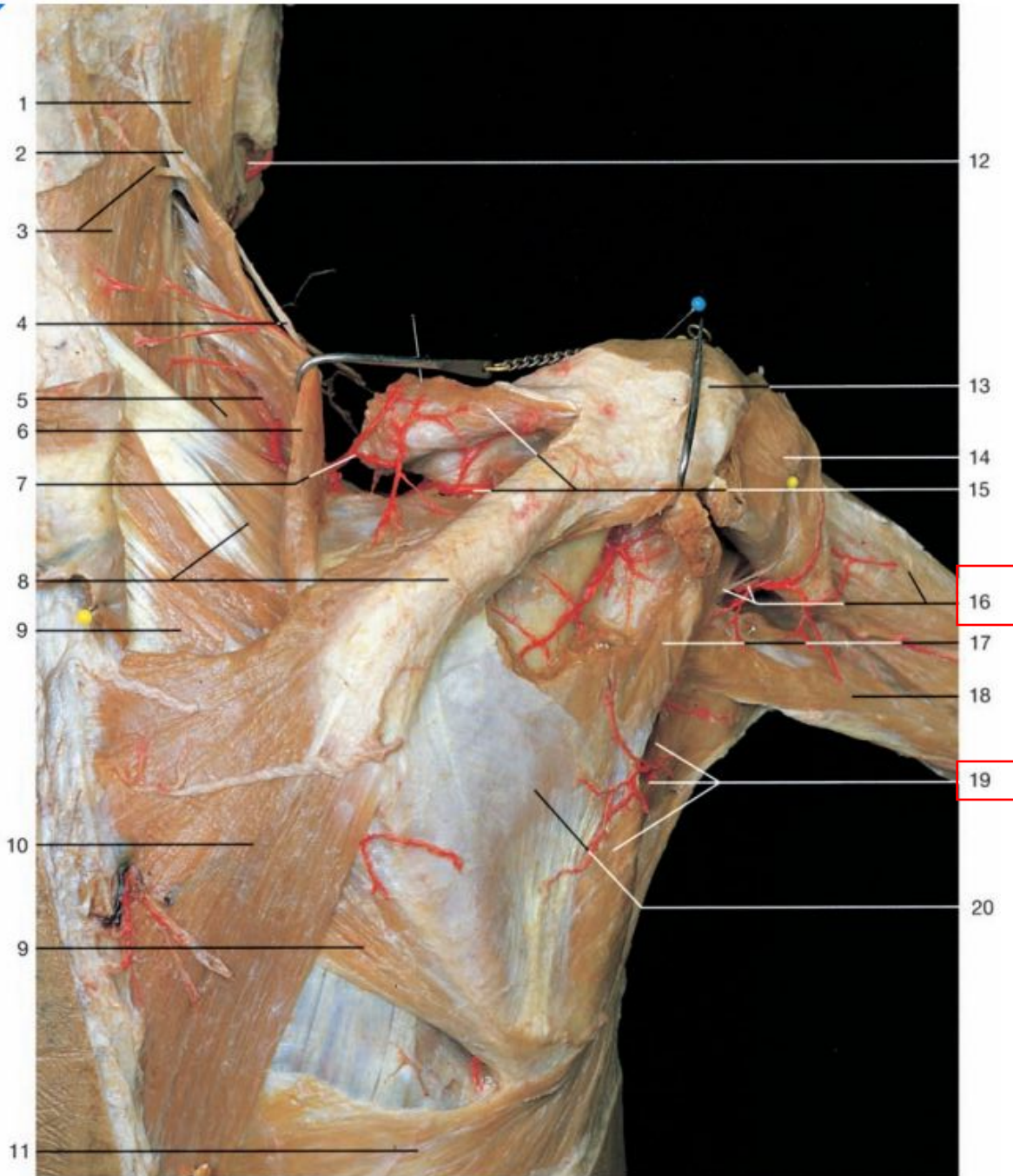
31 35 34 36 37

# Огибающие артерии



- 1 Trapezius muscle
- 2 Dorsal branches of posterior intercostal artery and vein (medial cutaneous branches)
- 3 Medial branches of dorsal rami of spinal nerves
- 4 Rhomboid major muscle
- 5 Lateral branches of dorsal rami of spinal nerves
- 6 Latissimus dorsi muscle
- 7 Posterior supraclavicular nerves
- 8 Spine of scapula
- 9 Deltoid muscle
- 10 Infraspinatus muscle
- 11 Teres minor muscle
- 12 Triangular space with circumflex scapular artery and vein
- 13 Upper lateral cutaneous nerve of arm with artery
- 14 Teres major muscle
- 15 Terminal branches of intercostobrachial nerve
- 16 Medial cutaneous nerve of arm
- 17 Tendon of triceps brachii muscle
- 18 Lateral cutaneous branches of intercostal nerves
- 19 Medial cutaneous nerve of forearm
- 20 Long head of triceps brachii muscle
- 21 Quadrangular space with axillary nerve and posterior humeral circumflex artery
- 22 Anastomosis between profunda brachii artery and posterior humeral circumflex artery
- 23 Course of radial nerve and profunda brachii artery
- 24 Lateral head of triceps brachii muscle
- 25 Medial collateral artery
- 26 Radial collateral artery
- 27 Radial nerve

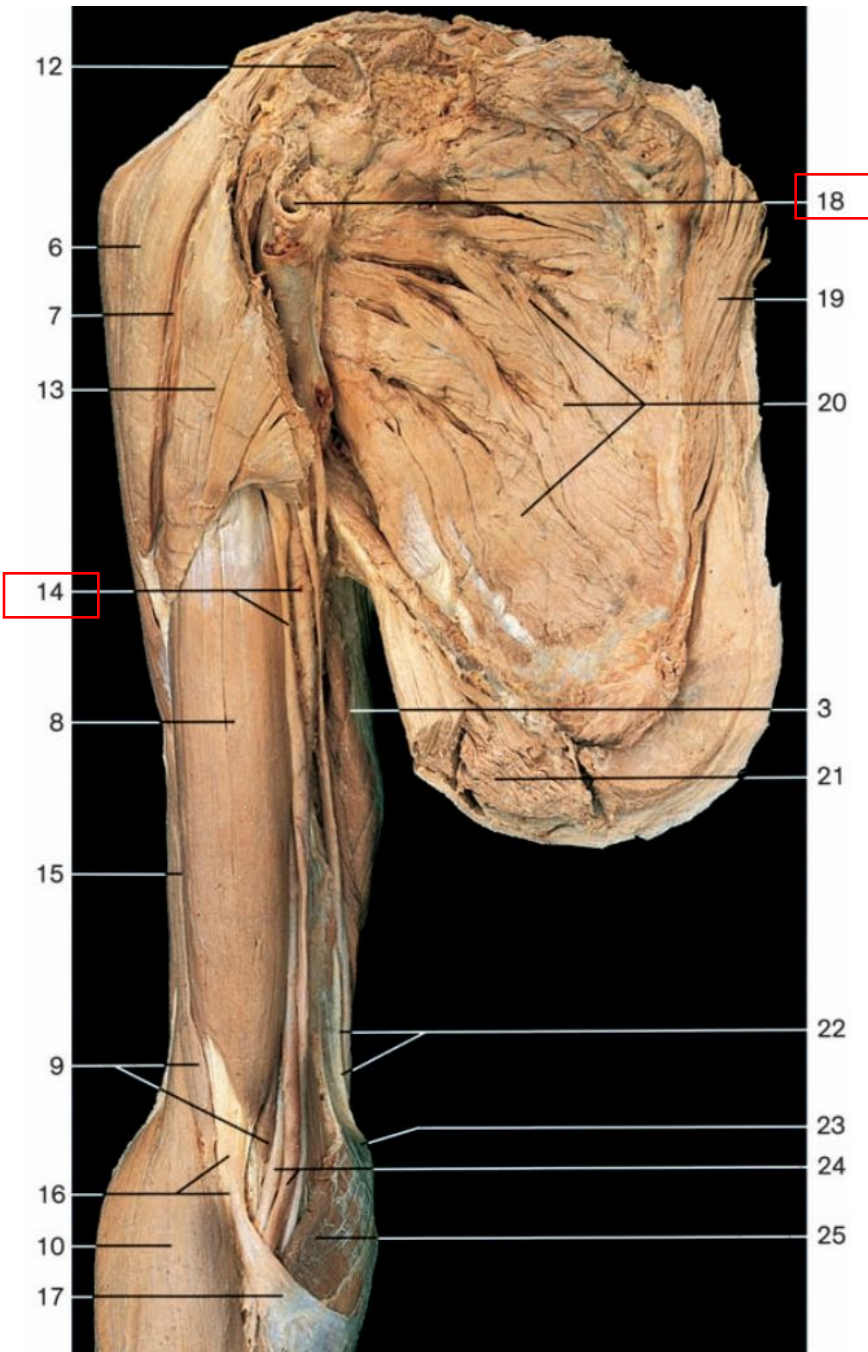
# Огибающие артерии



- 1 Sternocleidomastoid muscle
- 2 Lesser occipital nerve
- 3 Splenius capitis muscle and third occipital nerve
- 4 Accessory nerve (n. XI)
- 5 Splenius cervicis muscle and transverse cervical artery (deep branch)
- 6 Levator scapulae muscle
- 7 Transverse cervical artery (superficial branch)
- 8 Spine of scapula and serratus posterior superior muscle
- 9 Rhomboid major muscle

- 10 Trapezius muscle
- 11 Latissimus dorsi muscle
- 12 Facial artery
- 13 Acromion
- 14 Deltoid muscle
- 15 Suprascapular artery and supraspinatus muscle (reflected)
- 16 Axillary nerve, posterior circumflex humeral artery, and lateral head of triceps brachii muscle
- 17 Teres minor muscle
- 18 Long head of triceps brachii muscle
- 19 Circumflex scapular artery and teres major muscle
- 20 Infraspinatus muscle

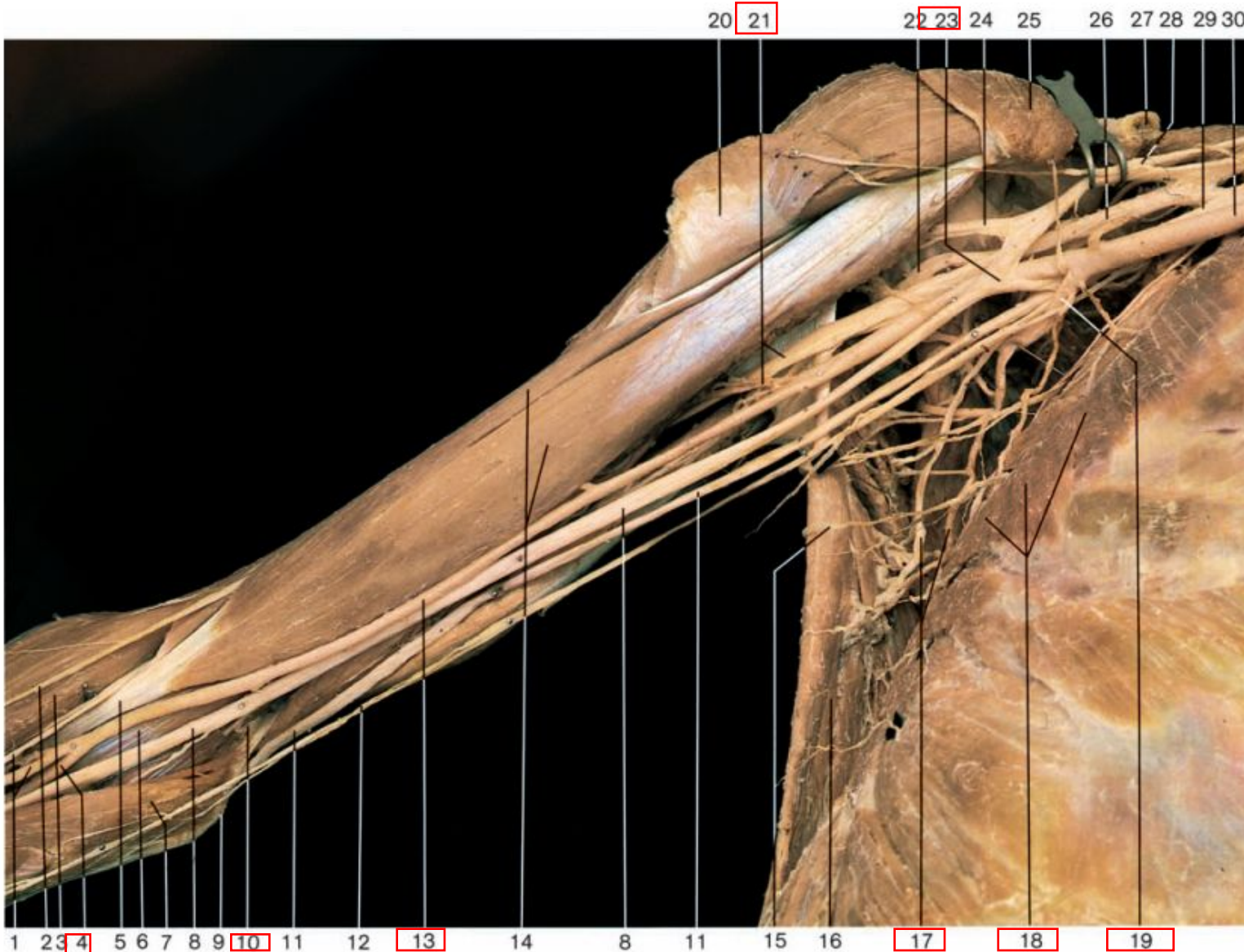
# Плечевая артерия



- 1 Acromial part of deltoid muscle (central fibers)
- 2 Scapular part of deltoid muscle (posterior fibers)
- 3 Triceps brachii muscle
- 4 Tendon of triceps brachii muscle
- 5 Olecranon
- 6 Clavicular part of deltoid muscle (anterior fibers)
- 7 Deltopectoral groove
- 8 Biceps brachii muscle
- 9 Brachialis muscle
- 10 Brachioradialis muscle
- 11 Extensor carpi radialis longus muscle
- 12 Clavicle (divided)
- 13 Pectoralis major muscle
- 14 Medial intermuscular septum with vessels and nerves
- 15 Lateral intermuscular septum
- 16 Tendon of biceps brachii muscle
- 17 Bicipital aponeurosis
- 18 Axillary artery
- 19 Rhomboid major muscle
- 20 Subscapularis muscle
- 21 Latissimus dorsi muscle (divided)
- 22 Medial intermuscular septum
- 23 Medial epicondyle of humerus
- 24 Brachial artery and median nerve
- 25 Pronator teres muscle
- 26 Tendon of short head of biceps brachii muscle
- 27 Coracobrachialis muscle
- 28 Distal part of biceps brachii muscle
- 29 Teres major muscle
- 30 Long head of triceps brachii muscle
- 31 Medial head of triceps brachii muscle
- 32 Radius
- 33 Head of humerus
- 34 Axillary nerve
- 35 Humerus
- 36 Trochlea
- 37 Ulna

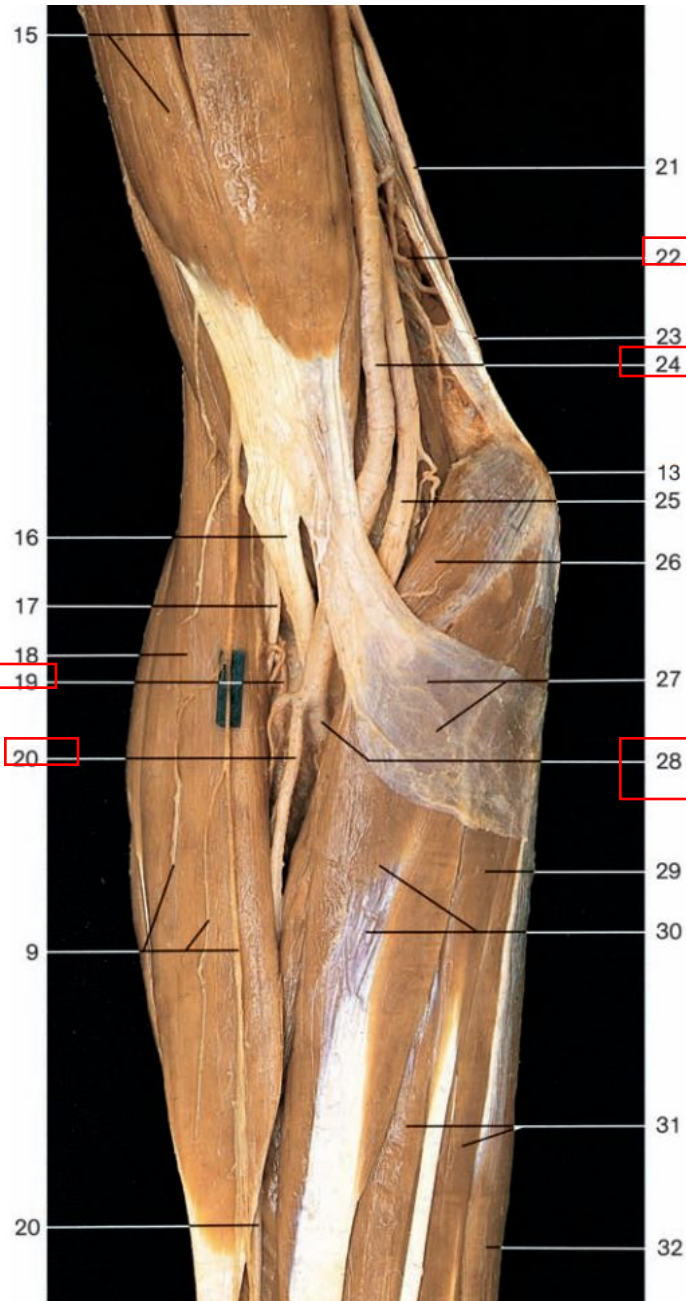


# Плечевая артерия



- |   |  |
|---|--|
| 1 Radial artery and superficial branch of radial nerve            | 8 Median nerve   |
| 2 Lateral cutaneous nerve of forearm                              | 9 Medial epicondyle of humerus                                   |
| 3 Brachioradialis muscle  | 10 Inferior ulnar collateral artery                              |
| 4 Ulnar artery  | 11 Ulnar nerve   |
| 5 Tendon of biceps brachii muscle                                 | 12 Medial cutaneous nerve of forearm                             |
| 6 Brachialis muscle   | 13 Brachial artery   |
| 7 Pronator teres muscle   | 14 Biceps brachii muscle   |
|   | 15 Intercostobrachial nerve (Th <sub>3</sub> )                   |
|   | 16 Latissimus dorsi muscle                                       |
| 17 Thoracodorsal nerve and artery                                 | 24 Musculocutaneous nerve  |
| 18 Serratus anterior muscle                                       | 25 Pectoralis minor muscle (reflected) and medial pectoral nerve |
| 19 Subscapular artery   | 26 Posterior cord of brachial plexus                             |
| 20 Pectoralis major muscle (reflected) and lateral pectoral nerve | 27 Clavicle (cut)  |
| 21 Radial nerve and profunda brachii artery                       | 28 Lateral cord of brachial plexus                               |
| 22 Axillary nerve   | 29 Medial cord of brachial plexus                                |
| 23 Roots of the median nerve with axillary artery                 | 30 Subclavian artery   |
|   | 31 Brachial vein   |

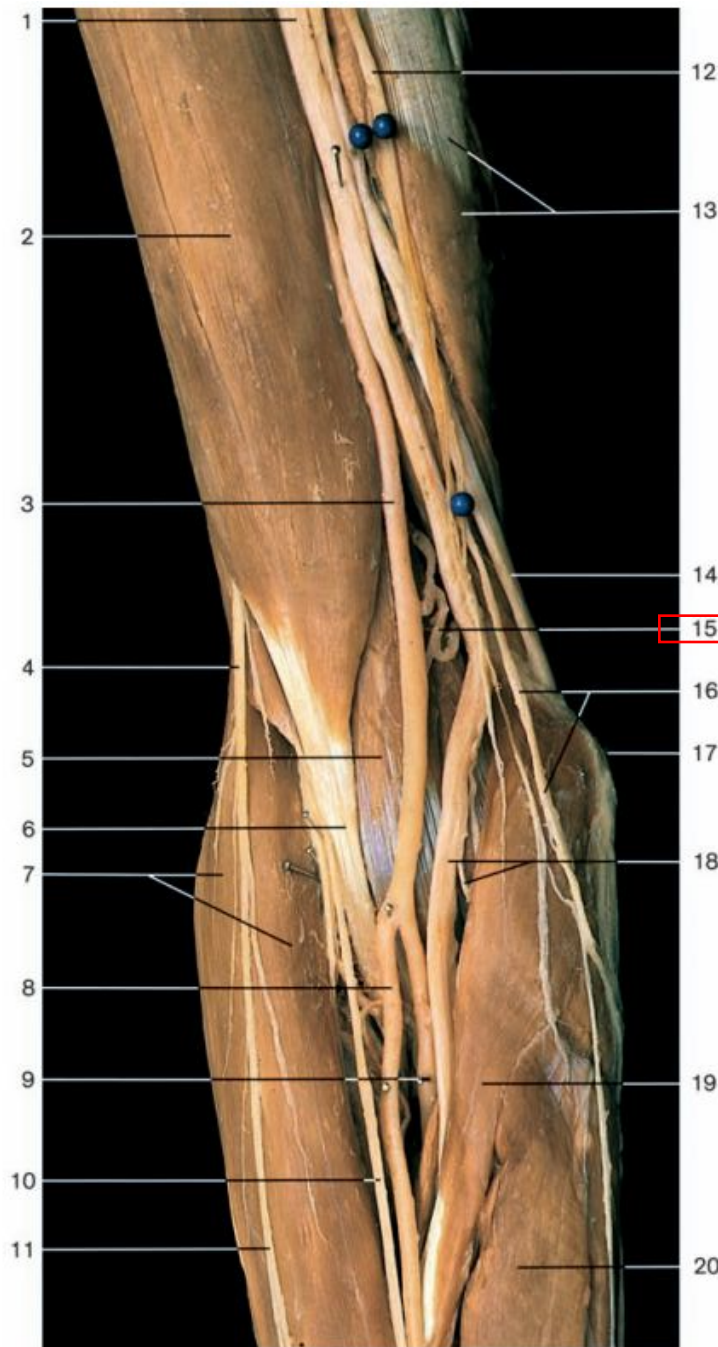
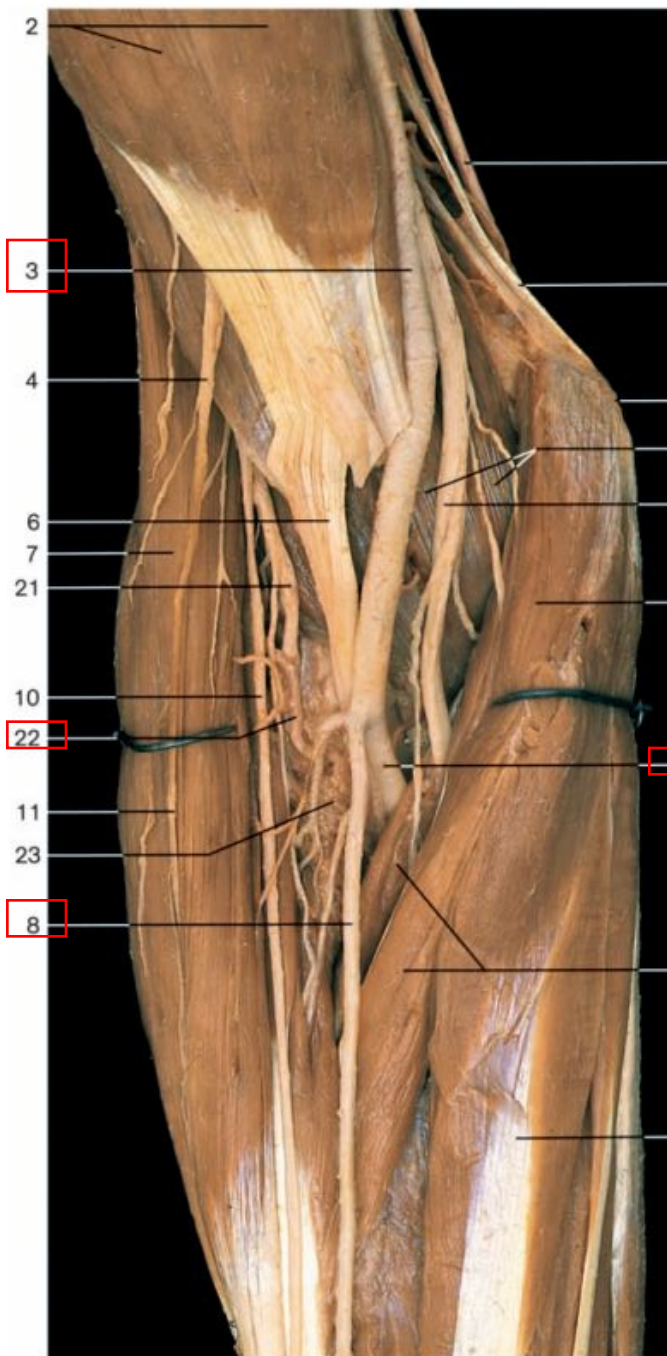
# Артерии предплечья



- 1 Biceps brachii muscle with fascia
- 2 Cephalic vein
- 3 Median cubital vein
- 4 Lateral cutaneous nerve of forearm
- 5 Tendon and aponeurosis of biceps brachii muscle (covered by the antebrachial fascia)
- 6 Brachioradialis muscle with fascia
- 7 Accessory cephalic vein
- 8 Median vein of forearm
- 9 Branches of lateral cutaneous nerve of forearm
- 10 Terminal branches of medial cutaneous nerve of arm
- 11 Medial cutaneous nerve of forearm
- 12 Basilic vein
- 13 Medial epicondyle of humerus
- 14 Terminal branches of medial cutaneous nerve of forearm
- 15 Biceps brachii muscle

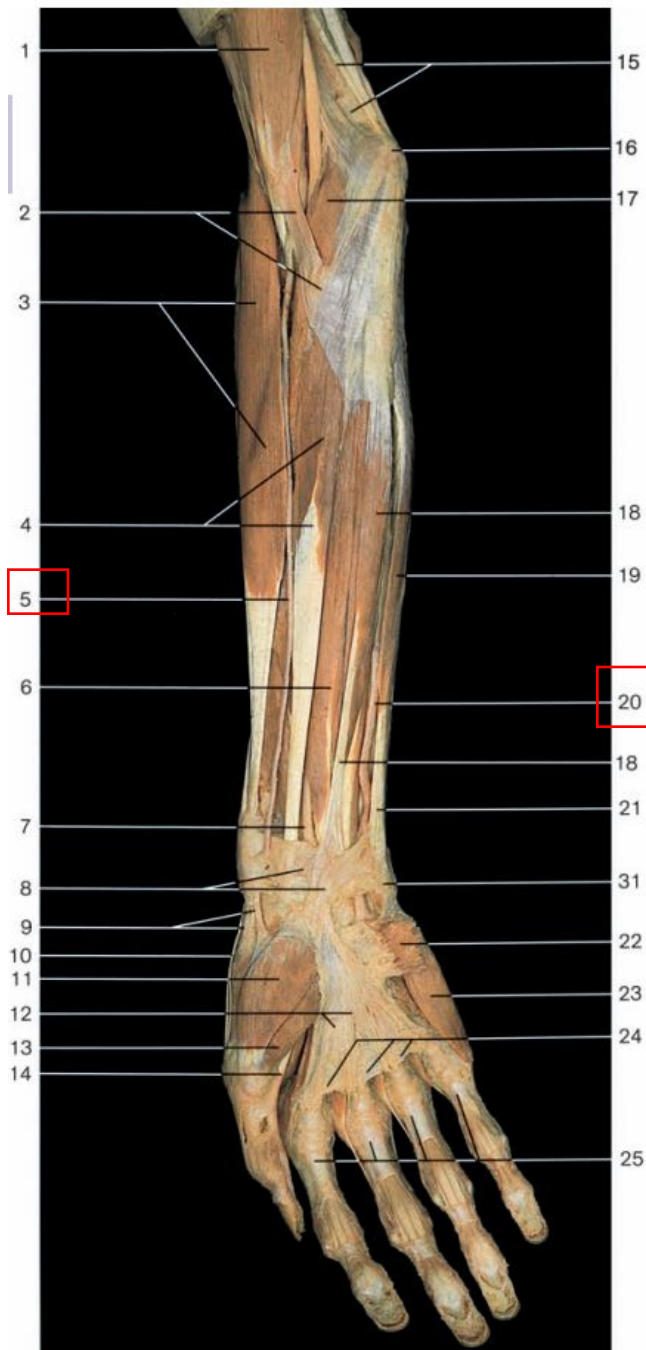
- 16 Tendon of biceps brachii muscle
- 17 Radial nerve
- 18 Brachioradialis muscle
- 19 Radial recurrent artery
- 20 Radial artery
- 21 Ulnar nerve
- 22 Superior ulnar collateral artery
- 23 Medial intermuscular septum
- 24 Brachial artery
- 25 Median nerve
- 26 Pronator teres muscle
- 27 Bicipital aponeurosis
- 28 Ulnar artery
- 29 Palmaris longus muscle
- 30 Flexor carpi radialis muscle
- 31 Flexor digitorum superficialis muscle
- 32 Flexor carpi ulnaris muscle

# Артерии предплечья



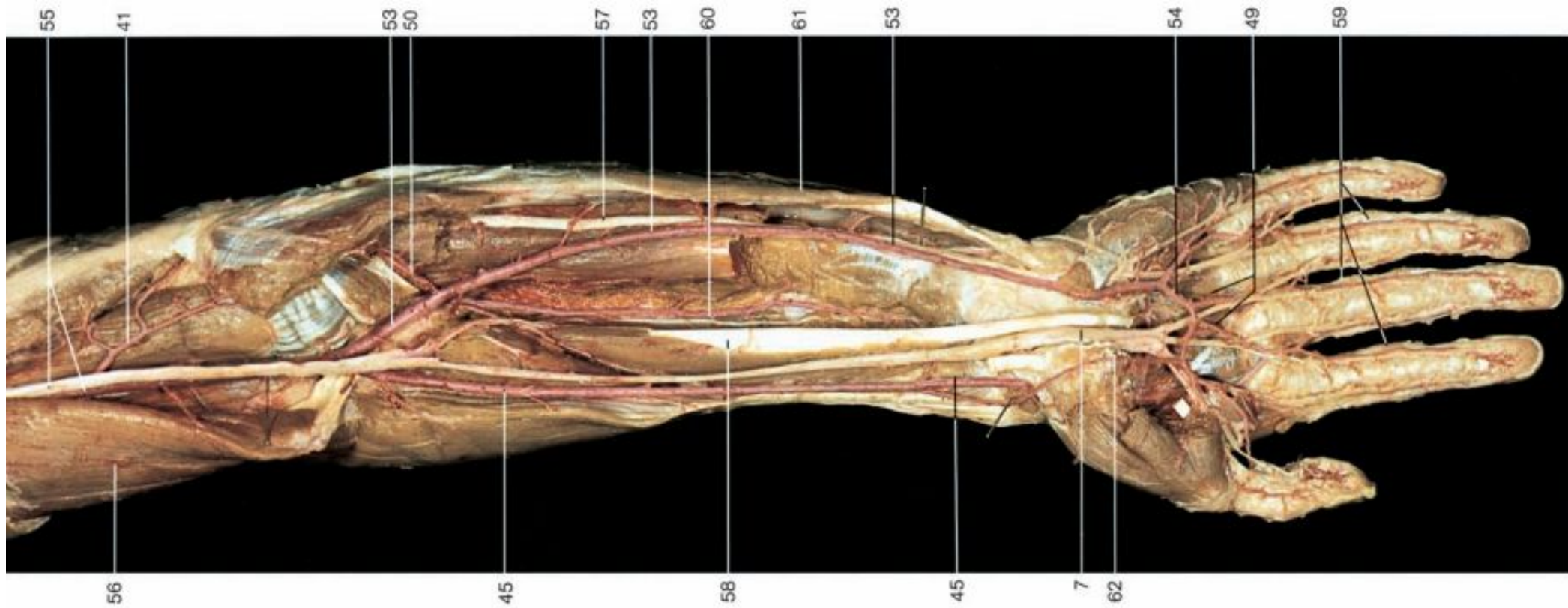
- 1 Median nerve
- 2 Biceps brachii muscle
- 3 Brachial artery
- 4 Lateral cutaneous nerve of forearm (terminal branch of musculocutaneous nerve)
- 5 Brachialis muscle
- 6 Tendon of biceps brachii muscle
- 7 Brachioradialis muscle
- 8 Radial artery
- 9 Ulnar artery
- 10 Superficial branch of radial nerve
- 11 Lateral cutaneous nerve of forearm
- 12 Medial cutaneous nerve of forearm
  
- 13 Triceps brachii muscle
- 14 Ulnar nerve
- 15 Inferior ulnar collateral artery
- 16 Anterior branch of medial cutaneous nerve of forearm
- 17 Medial epicondyle of humerus
- 18 Median nerve with branches to pronator teres muscle
- 19 Pronator teres muscle
- 20 Flexor carpi radialis muscle
- 21 Deep branch of radial nerve
- 22 Radial recurrent artery
- 23 Supinator muscle
- 24 Medial intermuscular septum of arm

# Артерии предплечья



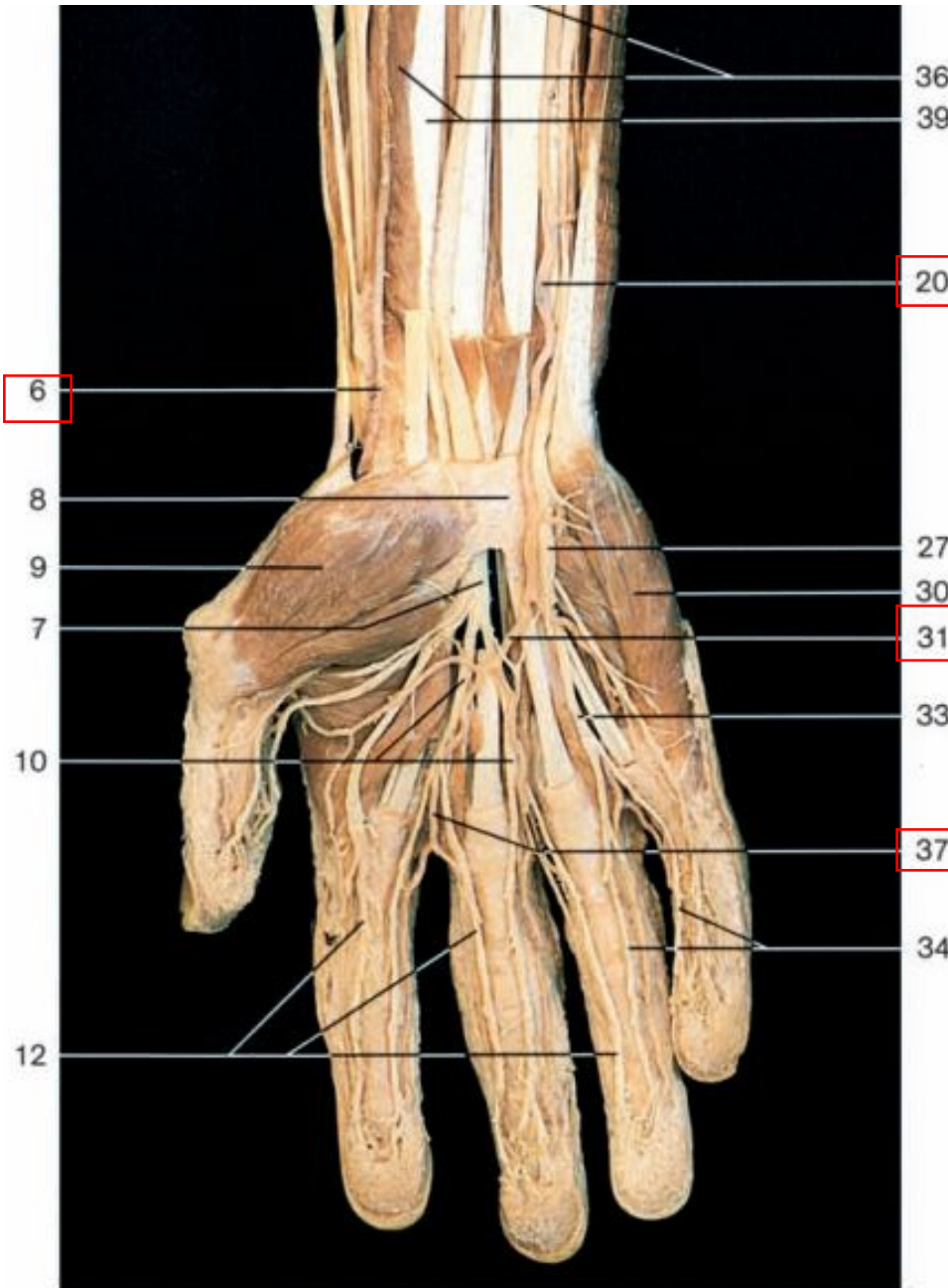
- 1 Biceps brachii muscle
- 2 Bicipital aponeurosis
- 3 Brachioradialis muscle
- 4 Flexor carpi radialis muscle
- 5 Radial artery
- 6 Flexor digitorum superficialis muscle
- 7 Median nerve
- 8 Antebrachial fascia and tendon of palmaris longus muscle
- 9 Tendon of abductor pollicis longus muscle
- 10 Tendon of extensor pollicis brevis muscle
- 11 Abductor pollicis brevis muscle

- 12 Palmar aponeurosis
- 13 Superficial head of flexor pollicis brevis muscle
- 14 Tendon of flexor pollicis longus muscle
- 15 Medial intermuscular septum
- 16 Medial epicondyle of humerus
- 17 Humeral head of pronator teres muscle
- 18 Palmaris longus muscle
- 19 Flexor carpi ulnaris muscle
- 20 Ulnar artery
- 21 Tendon of flexor carpi ulnaris muscle
- 22 Palmaris brevis muscle



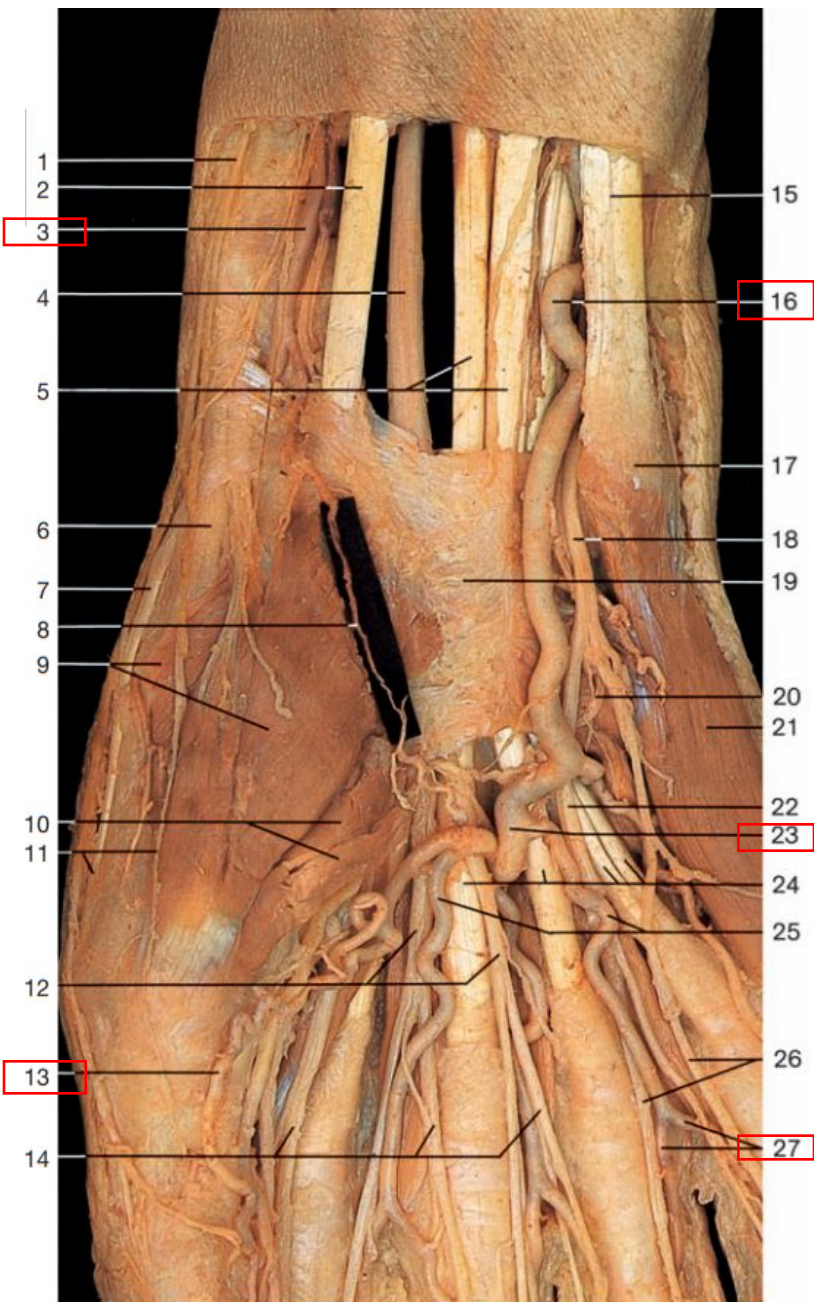
- |    |   |    |   |    |  |
|----|---|----|---|----|--|
| 1  | Pectoralis minor muscle (reflected)       | 22 | Thyroid gland                             | 43 | Radial collateral artery                     |
| 2  | Anterior circumflex humeral artery        | 23 | Inferior thyroid artery                   | 44 | Radial recurrent artery                      |
| 3  | Musculocutaneous nerve (divided)          | 24 | Internal thoracic artery                  | 45 | Radial artery                                |
| 4  | Axillary artery                           | 25 | Right subclavian artery                   | 46 | Anterior and posterior interosseous arteries |
| 5  | Posterior circumflex humeral artery       | 26 | Brachiocephalic trunk                     | 47 | Princeps pollicis artery                     |
| 6  | Profunda brachii artery                   | 27 | Left brachiocephalic vein (divided)       | 48 | Deep palmar arch                             |
| 7  | Median nerve (var.)                       | 28 | Left vagus nerve                          | 49 | Common palmar digital arteries               |
| 8  | Brachial artery                           | 29 | Superior vena cava (divided)              | 50 | Ulnar recurrent artery                       |
| 9  | Biceps brachii muscle                     | 30 | Ascending aorta                           | 51 | Recurrent interosseous artery                |
| 10 | Thoraco-acromial artery                   | 31 | Median nerve (divided)                    | 52 | Common interosseous artery                   |
| 11 | Suprascapular artery                      | 32 | Phrenic nerve                             | 53 | Ulnar artery                                 |
| 12 | Descending scapular artery                | 33 | Right lung (divided) and pulmonary pleura | 54 | Superficial palmar arch                      |
| 13 | Brachial plexus (middle trunk)            | 34 | Thoracodorsal artery                      | 55 | Median nerve and brachial artery             |
| 14 | Transverse cervical artery                | 35 | Subscapular artery                        | 56 | Biceps brachii muscle                        |
| 15 | Anterior scalene muscle and phrenic nerve | 36 | Lateral mammary branches (var.)           | 57 | Ulnar nerve                                  |
| 16 | Right internal carotid artery             | 37 | Lateral thoracic artery                   | 58 | Flexor pollicis longus muscle                |
| 17 | Right external carotid artery             | 38 | Thyrocerivical trunk                      | 59 | Proper palmar digital arteries               |
| 18 | Carotid sinus                             | 39 | Supreme intercostal artery                | 60 | Anterior interosseous artery                 |
| 19 | Superior thyroid artery                   | 40 | Superior ulnar collateral artery          | 61 | Flexor carpi ulnaris muscle                  |
| 20 | Right common carotid artery               | 41 | Inferior ulnar collateral artery          | 62 | Superficial palmar branch of radial artery   |
| 21 | Ascending cervical artery                 | 42 | Middle collateral artery                  |    |  |

# Поверхностная ладонная дуга



- 1 Biceps brachii muscle
- 2 Brachialis muscle
- 3 Brachioradialis muscle
- 4 Deep branch of radial nerve
- 5 Superficial branch of radial nerve
- 6 Radial artery
- 7 Median nerve
- 8 Flexor retinaculum
- 9 Thenar muscles
- 10 Common palmar digital nerves of median nerve
- 11 Common palmar digital arteries
- 12 Proper palmar digital nerves of median nerve
- 13 Ulnar nerve
- 14 Medial intermuscular septum of arm
- 15 Superior ulnar collateral artery
- 16 Brachial artery
- 17 Medial epicondyle of humerus
- 18 Pronator teres muscle
- 19 Bicipital aponeurosis
- 20 Ulnar artery
- 21 Palmaris longus muscle
- 22 Flexor carpi radialis muscle
- 23 Flexor digitorum superficialis muscle
- 24 Flexor carpi ulnaris muscle
- 25 Tendon of palmaris longus muscle
- 26 Remnant of antebrachial fascia
- 27 Superficial branch of ulnar nerve
- 28 Palmaris brevis muscle
- 29 Palmar aponeurosis
- 30 Hypothenar muscles
- 31 Superficial palmar arch
- 32 Superficial transverse metacarpal ligament
- 33 Common palmar digital branch of ulnar nerve
- 34 Proper palmar digital branches of ulnar nerve
- 35 Anterior interosseous artery and nerve
- 36 Flexor digitorum profundus muscle
- 37 Common palmar digital arteries
- 38 Palmar branch of median nerve
- 39 Flexor pollicis longus muscle
- 40 Palmar cutaneous branch of ulnar nerve

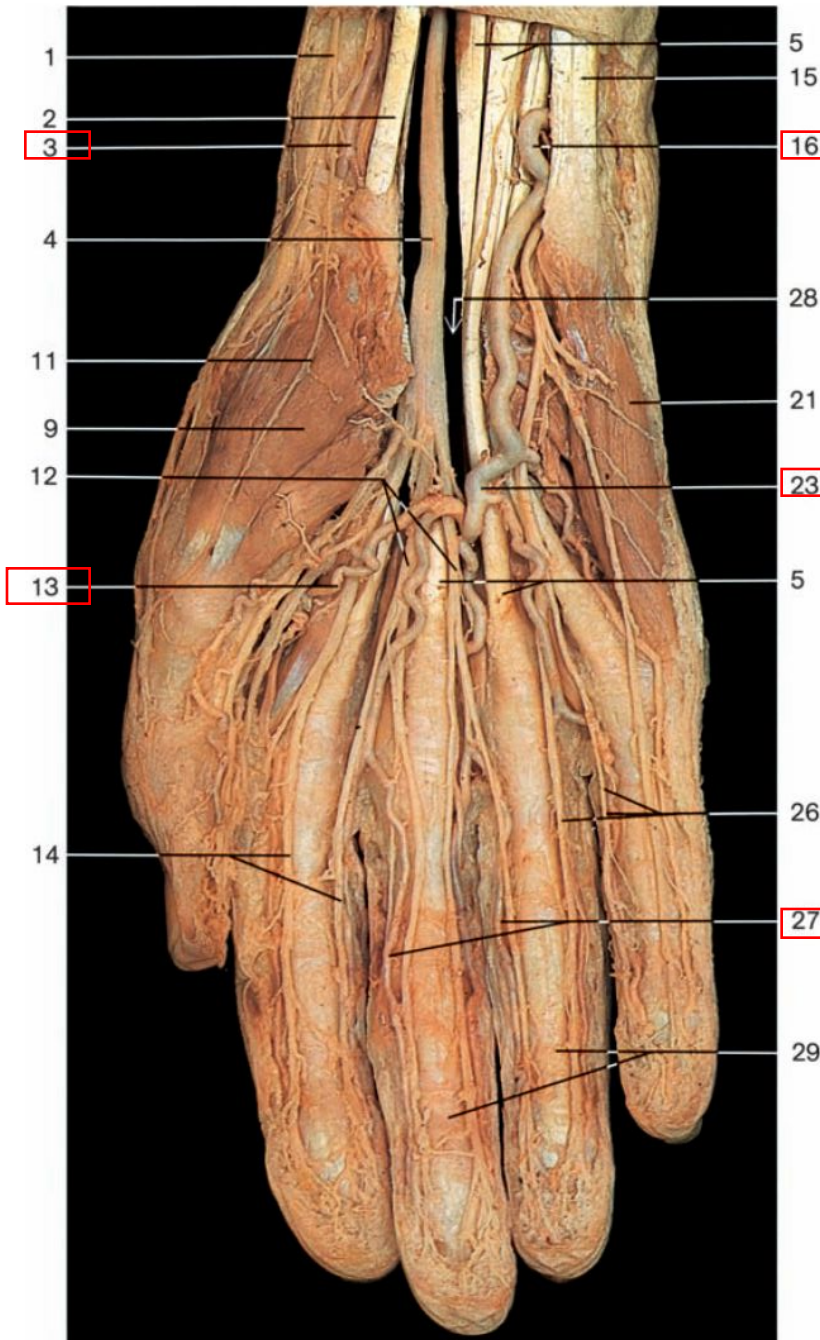
# Поверхностная ладонная дуга



- 1 Superficial branch of radial nerve
- 2 Tendon of flexor carpi radialis muscle
- 3 Radial artery
- 4 Median nerve
- 5 Tendon of flexor digitorum superficialis muscle
- 6 Tendon of abductor pollicis longus muscle
- 7 Tendon of extensor pollicis brevis muscle
- 8 Superficial palmar branch of radial artery
- 9 Abductor pollicis brevis muscle
- 10 Superficial head of flexor pollicis brevis muscle
- 11 Terminal branches of superficial branch of radial nerve
- 12 Common palmar digital nerves (median nerve)
- 13 Proper palmar digital arteries of thumb
- 14 Proper palmar digital nerves (median nerve)
- 15 Tendon of flexor carpi ulnaris muscle
- 16 Ulnar artery
- 17 Position of pisiform bone
- 18 Superficial branch of ulnar nerve
- 19 Flexor retinaculum
- 20 Deep branch of ulnar nerve
- 21 Abductor digiti minimi muscle
- 22 Common palmar digital nerve (ulnar nerve)

- 23 Superficial palmar arch
- 24 Tendons of flexor digitorum muscles
- 25 Common palmar digital arteries
- 26 Palmar digital nerves (ulnar nerve)
- 27 Proper palmar digital arteries
- 28 Carpal tunnel
- 29 Fibrous sheaths for the tendons of flexor digitorum muscles
- 30 Deep palmar arch
- 31 Princeps pollicis artery
- 32 Palmar branch of median nerve
- 33 Common digital palmar artery
- 34 Ulnar nerve
- 35 Capillary network of fingers
- 36 Radius
- 37 Carpals bones
- 38 Metacarpal bone
- 39 Interossei muscles
- 40 Proximal phalanx
- 41 Middle phalanx
- 42 Distal phalanx
- 43 Dorsal branch of ulnar nerve
- 44 Tendons of flexor digitorum profundus (upper) and superficialis (lower) muscles

# Пальцевые артерии

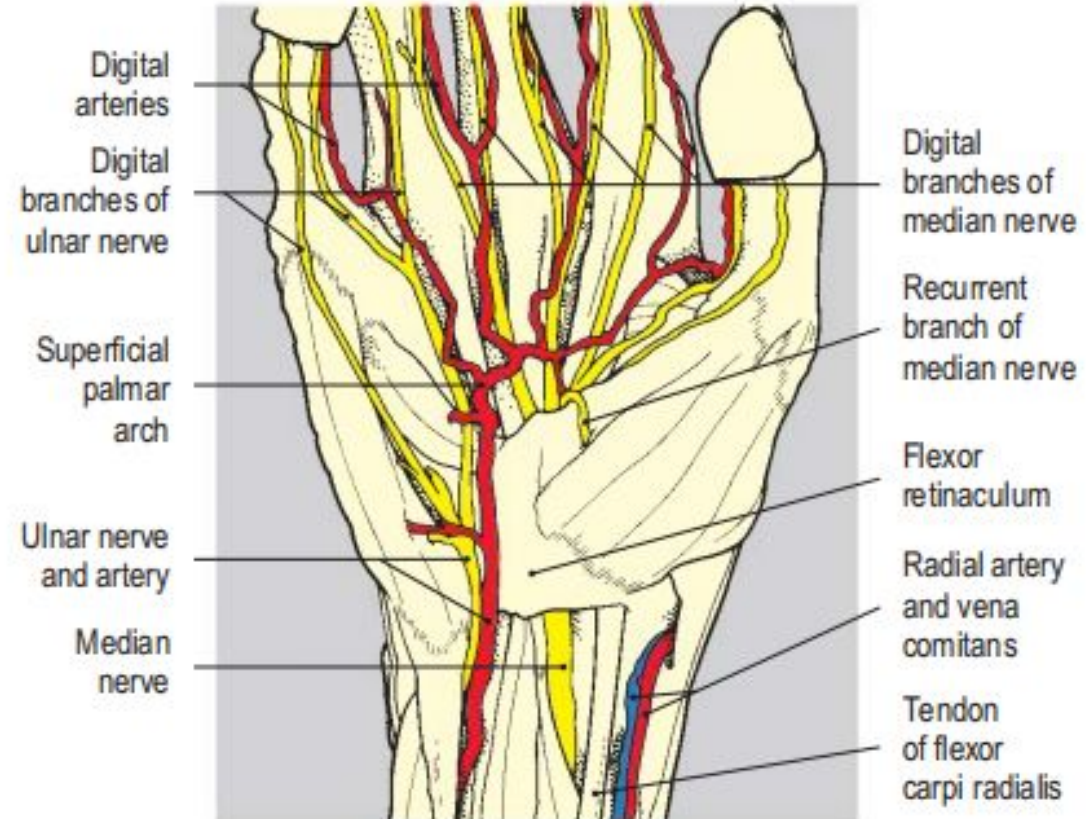
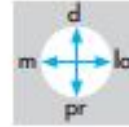


- 1 Superficial branch of radial nerve
- 2 Tendon of flexor carpi radialis muscle
- 3 Radial artery
- 4 Median nerve
- 5 Tendon of flexor digitorum superficialis muscle
- 6 Tendon of abductor pollicis longus muscle
- 7 Tendon of extensor pollicis brevis muscle
- 8 Superficial palmar branch of radial artery
- 9 Abductor pollicis brevis muscle
- 10 Superficial head of flexor pollicis brevis muscle
- 11 Terminal branches of superficial branch of radial nerve
- 12 Common palmar digital nerves (median nerve)
- 13 Proper palmar digital arteries of thumb
- 14 Proper palmar digital nerves (median nerve)
- 15 Tendon of flexor carpi ulnaris muscle
- 16 Ulnar artery
- 17 Position of pisiform bone
- 18 Superficial branch of ulnar nerve
- 19 Flexor retinaculum
- 20 Deep branch of ulnar nerve
- 21 Abductor digiti minimi muscle
- 22 Common palmar digital nerve (ulnar nerve)

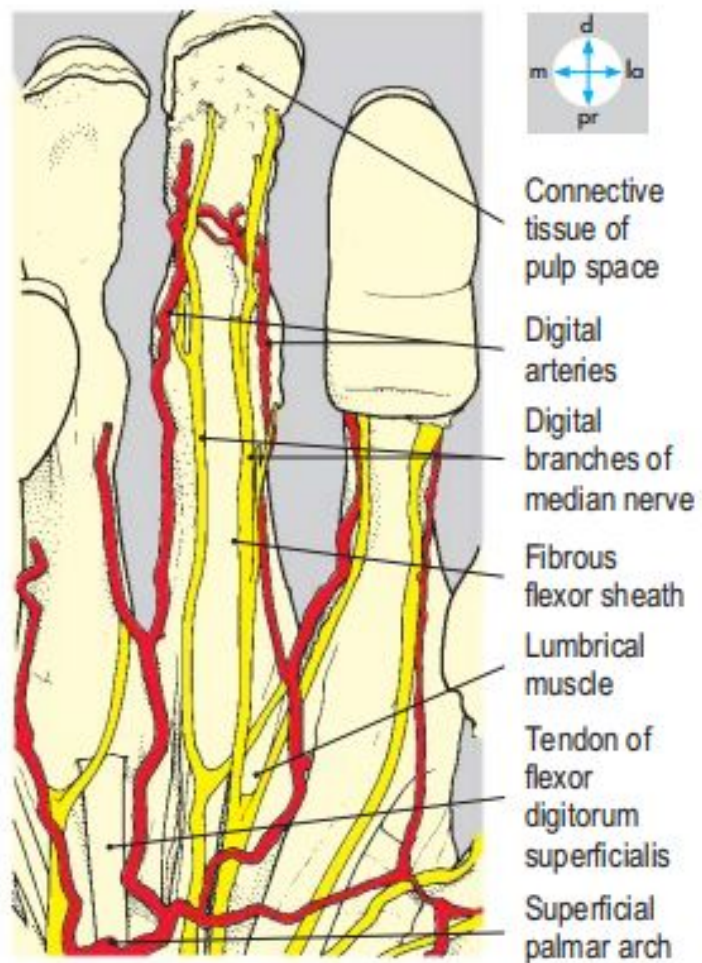
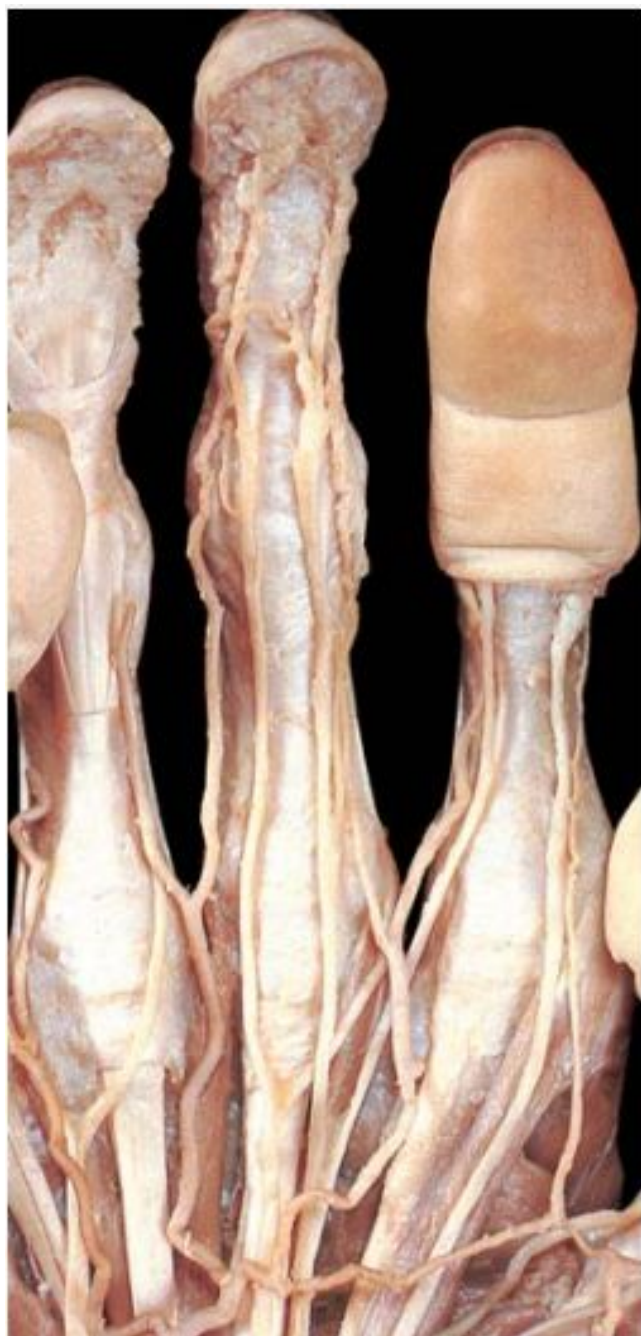
- 23 Superficial palmar arch
- 24 Tendons of flexor digitorum muscles
- 25 Common palmar digital arteries
- 26 Palmar digital nerves (ulnar nerve)
- 27 Proper palmar digital arteries
- 28 Carpal tunnel
- 29 Fibrous sheaths for the tendons of flexor digitorum muscles
- 30 Deep palmar arch
- 31 Princeps pollicis artery
- 32 Palmar branch of median nerve
- 33 Common digital palmar artery
- 34 Ulnar nerve
- 35 Capillary network of fingers
- 36 Radius
- 37 Carpal bones
- 38 Metacarpal bone
- 39 Interossei muscles
- 40 Proximal phalanx
- 41 Middle phalanx
- 42 Distal phalanx
- 43 Dorsal branch of ulnar nerve
- 44 Tendons of flexor digitorum profundus (upper) and superficialis (lower) muscles



# Поверхностная ладонная дуга

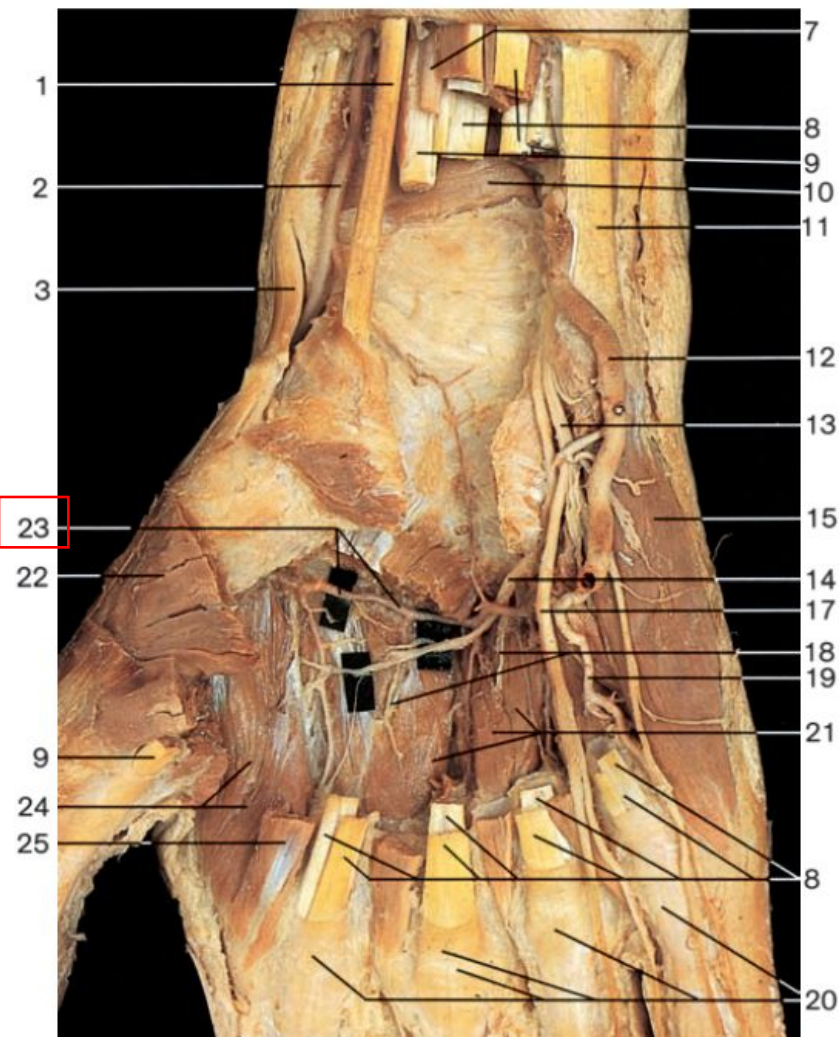
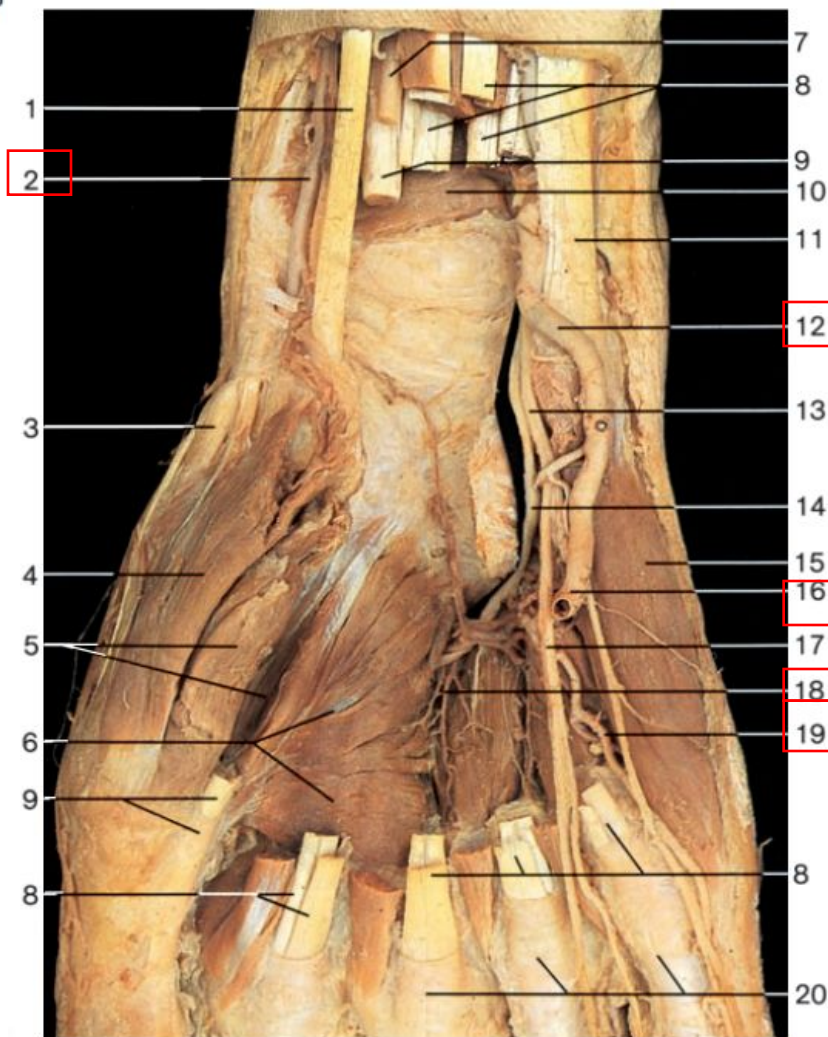


# Пальцевые артерии

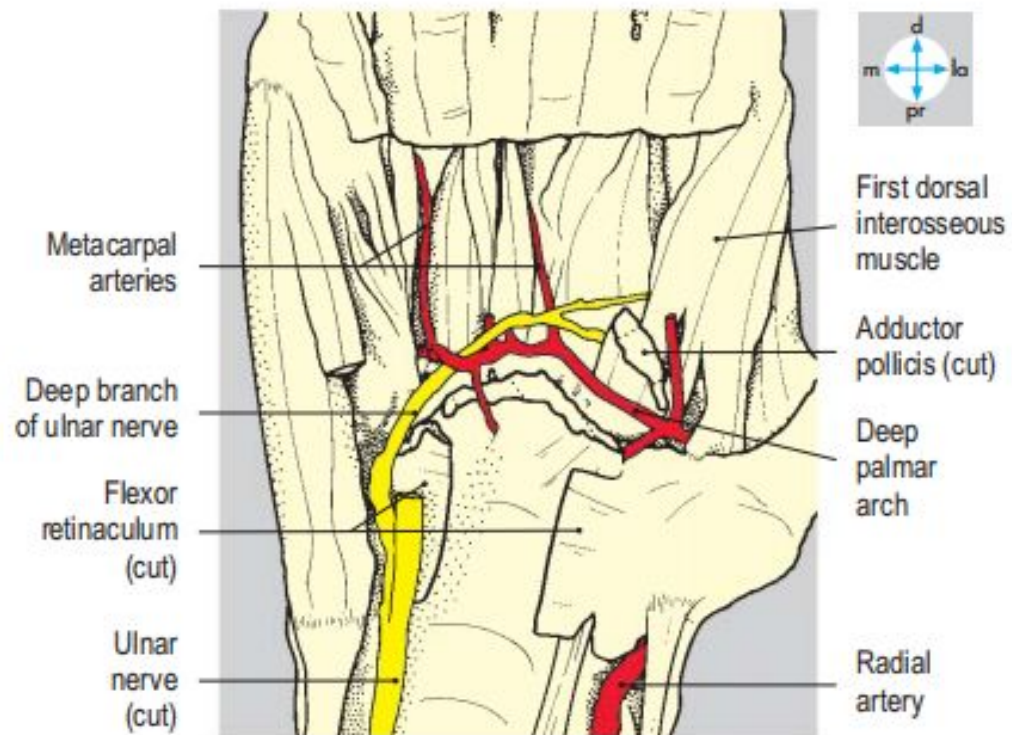


# Глубокая ладонная дуга

- 1 Tendon of flexor carpi radialis muscle
- 2 Radial artery
- 3 Tendon of abductor pollicis longus muscle
- 4 Abductor pollicis brevis muscle
- 5 Superficial and deep heads of flexor pollicis brevis muscle
- 6 Oblique and transverse heads of adductor pollicis muscle
- 7 Median nerve
- 8 Tendons of flexor digitorum superficialis and profundus muscles
- 9 Tendon of flexor pollicis longus muscle
- 10 Pronator quadratus muscle
- 11 Tendon of flexor carpi ulnaris muscle
- 12 Ulnar artery
- 13 Superficial branch of ulnar nerve
- 14 Deep branch of ulnar nerve
- 15 Abductor digiti minimi muscle
- 16 Superficial palmar arch (cut end)
- 17 Common palmar digital nerve (ulnar nerve)
- 18 Palmar metacarpal arteries of deep palmar arch
- 19 Palmar digital artery of the fifth finger
- 20 Fibrous sheaths of tendons of flexor muscles
- 21 Palmar interossei muscles
- 22 Opponens pollicis muscle (cut)
- 23 Deep palmar arch
- 24 First dorsal interosseous muscle
- 25 First lumbrical muscle



# Глубокая ладонная дуга



# КОНЕЦ

