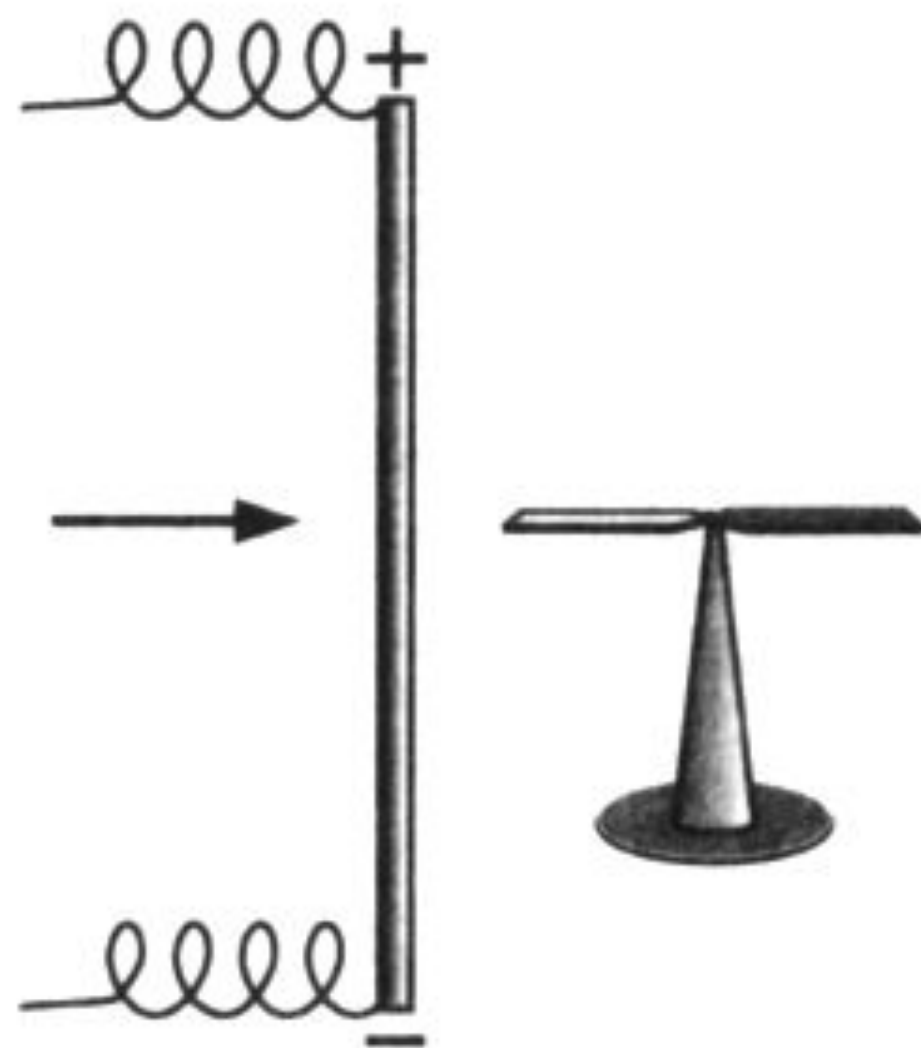
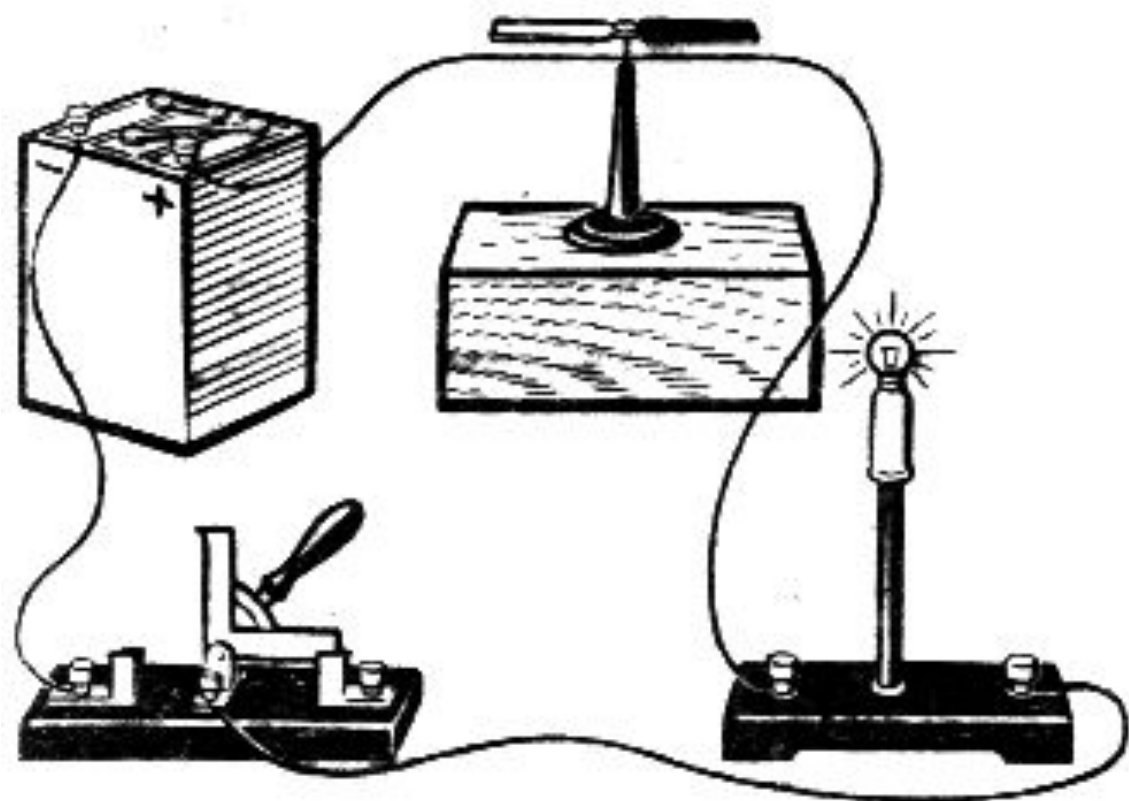


# §65 Отражение света

Дом. задание: §65,  
Упр. 45 №3 (исп. циркуль),  
№1537



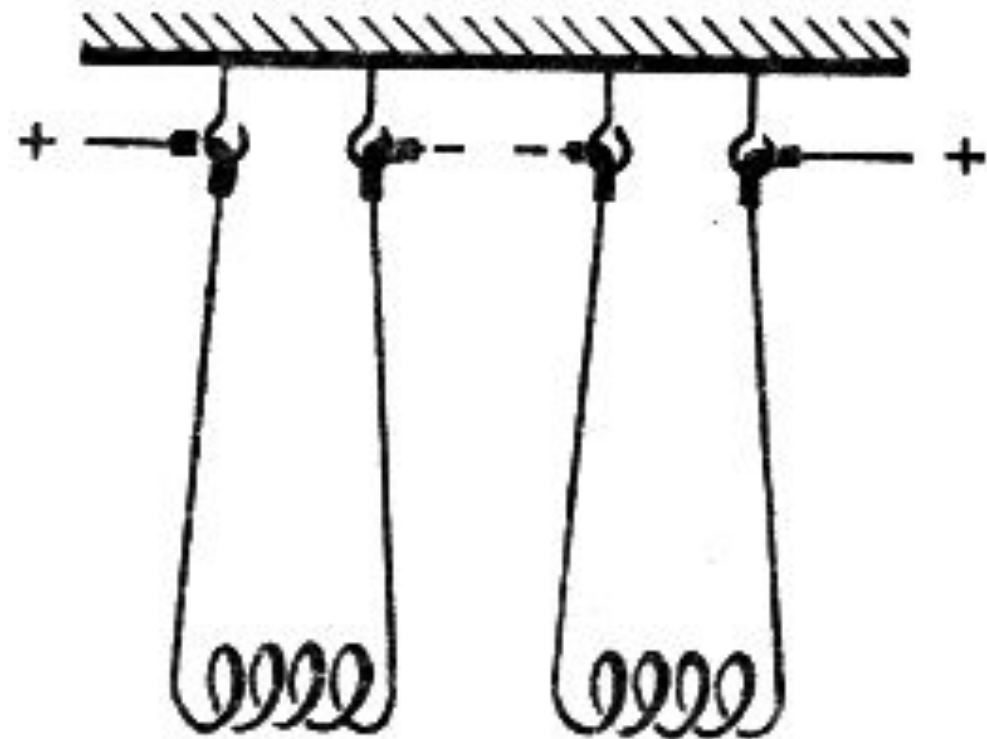
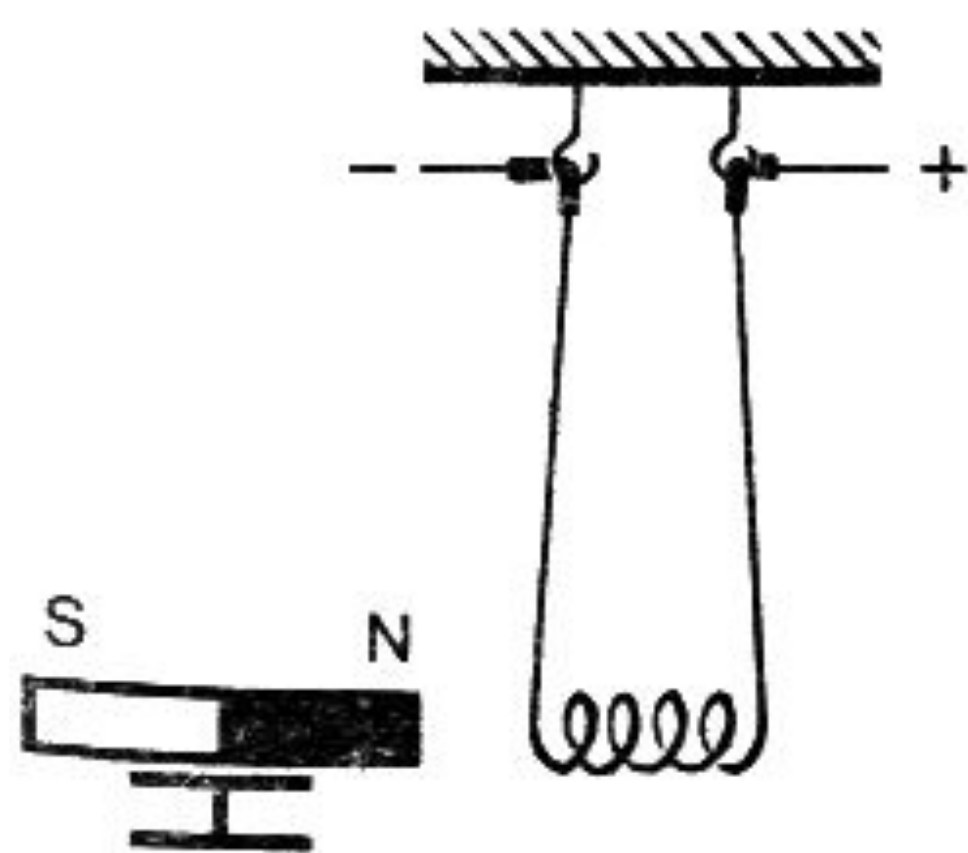
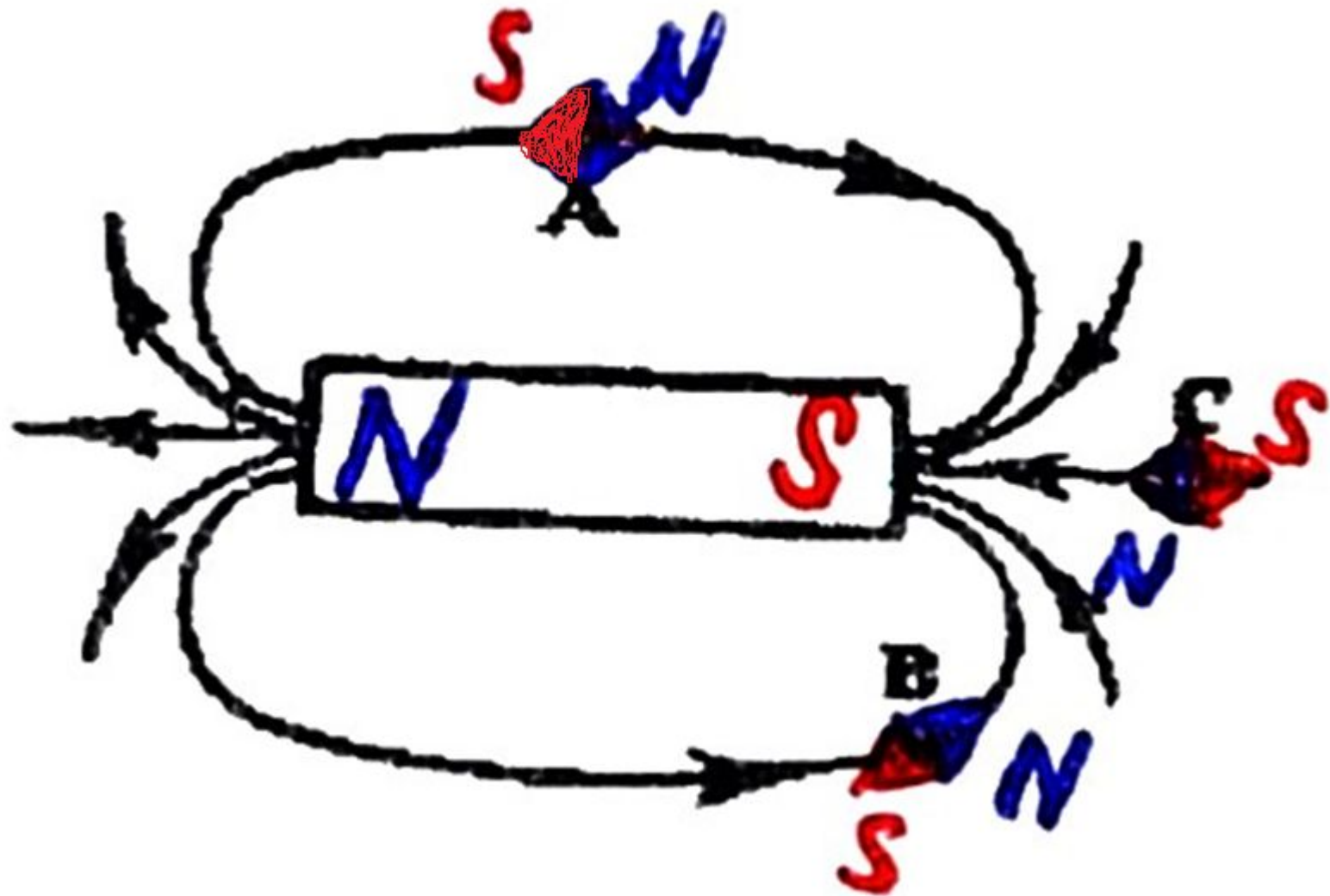
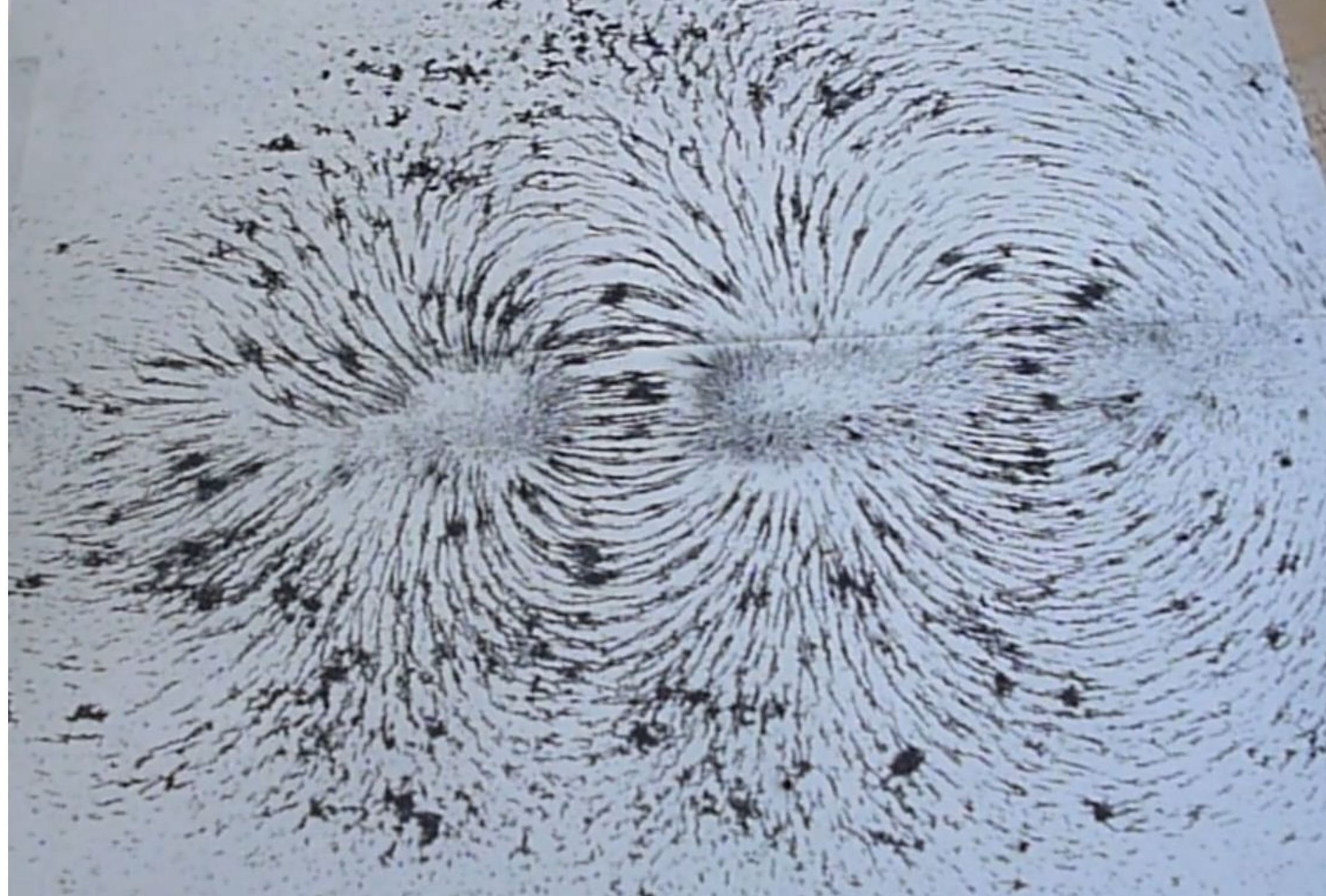
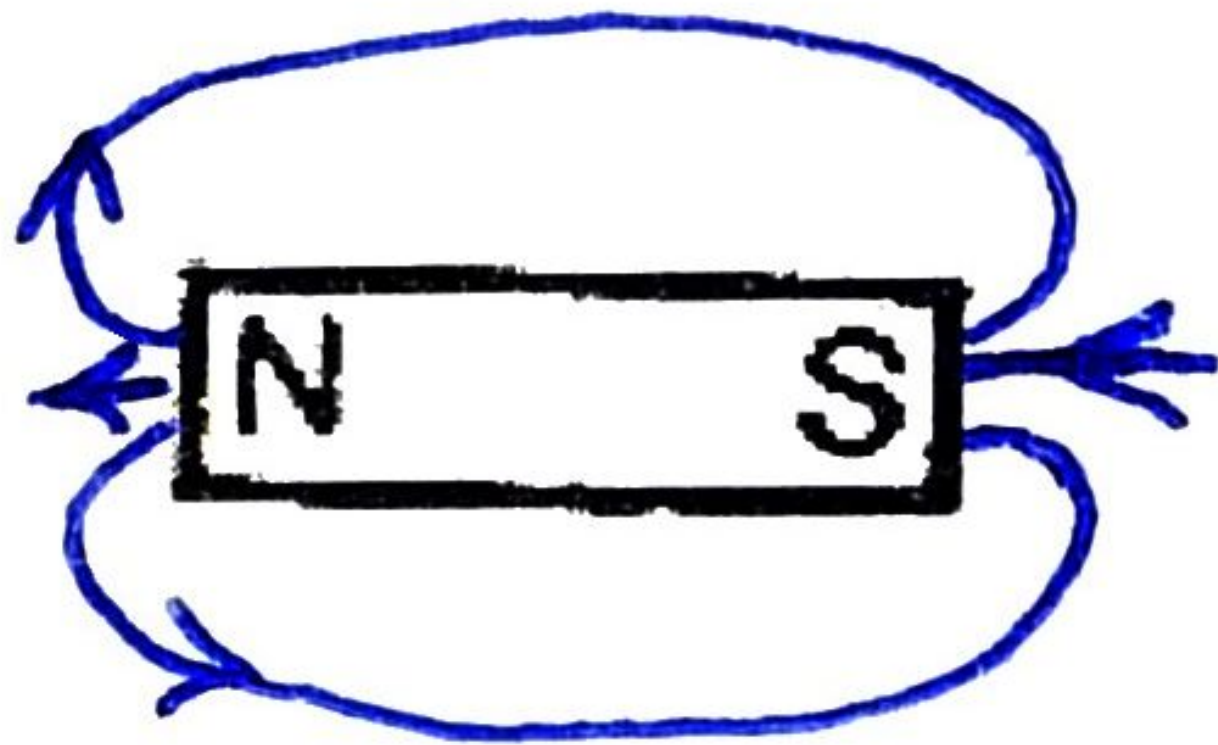
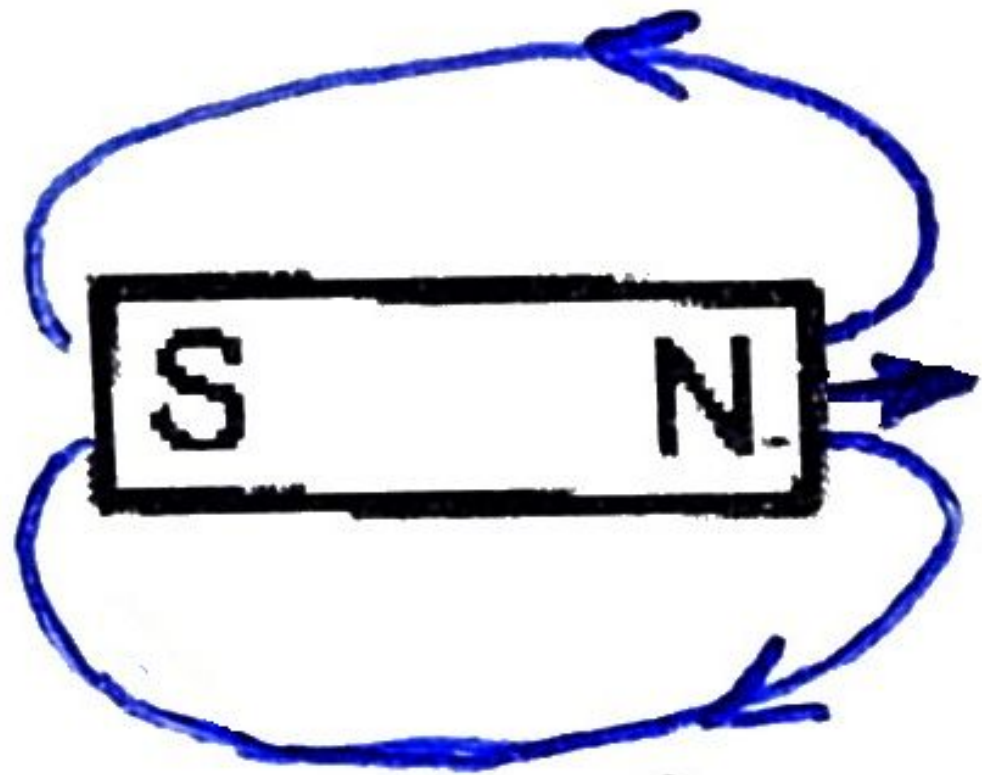
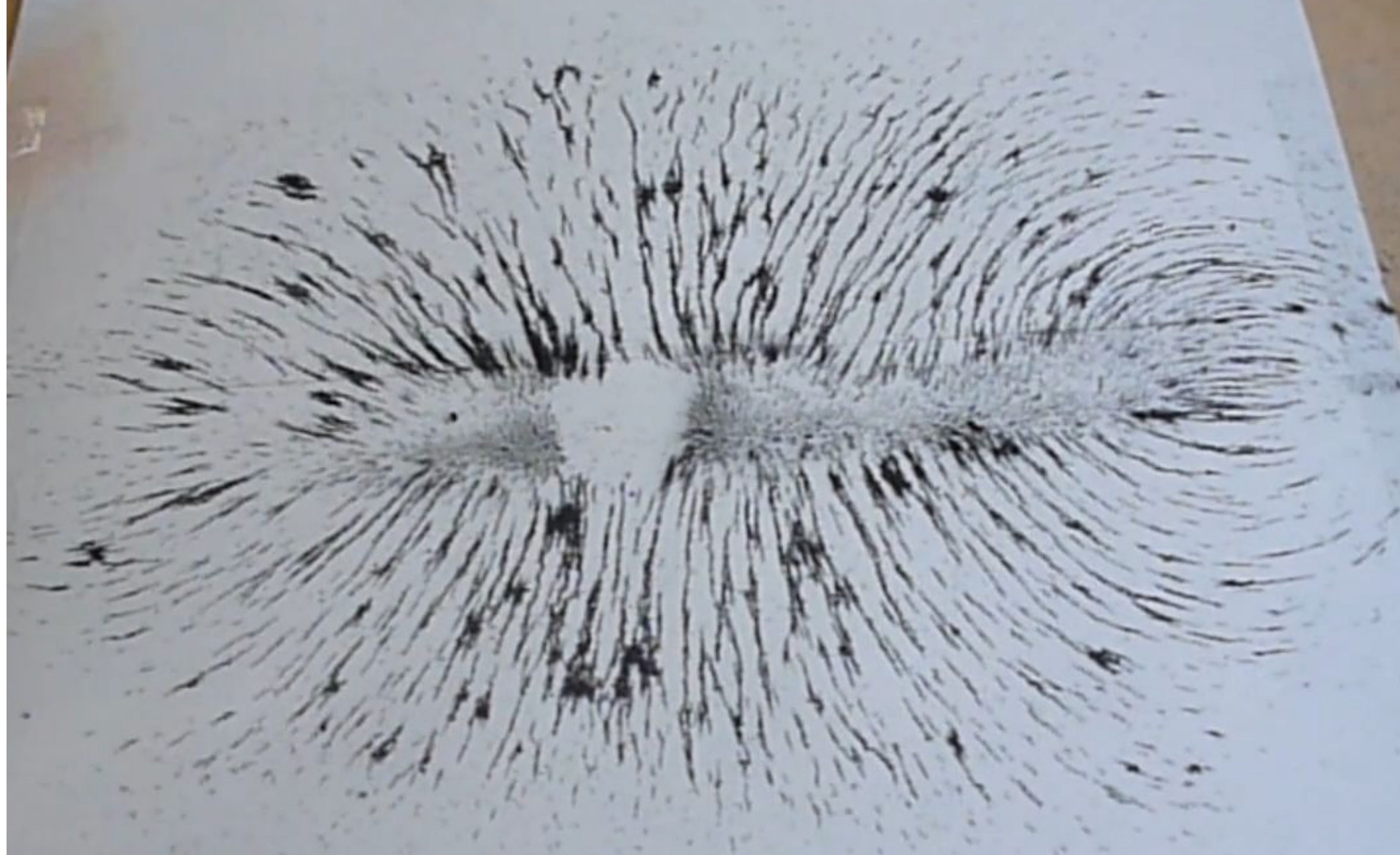


Рис. 329









Как можно определить магнитное склонение в данном месте? Напишите, на что надо обратить внимание, чтобы измерение было максимально точное.

Как с помощью компаса узнать точное направление на север в нашем городе?



**24 апреля**  
**ИСТИННЫЙ**  
**ПОЛДЕНЬ В 12 Ч 25**  
**МИНУТ**

объект В

магнитное  
склонение  
 $22^{\circ}$  В

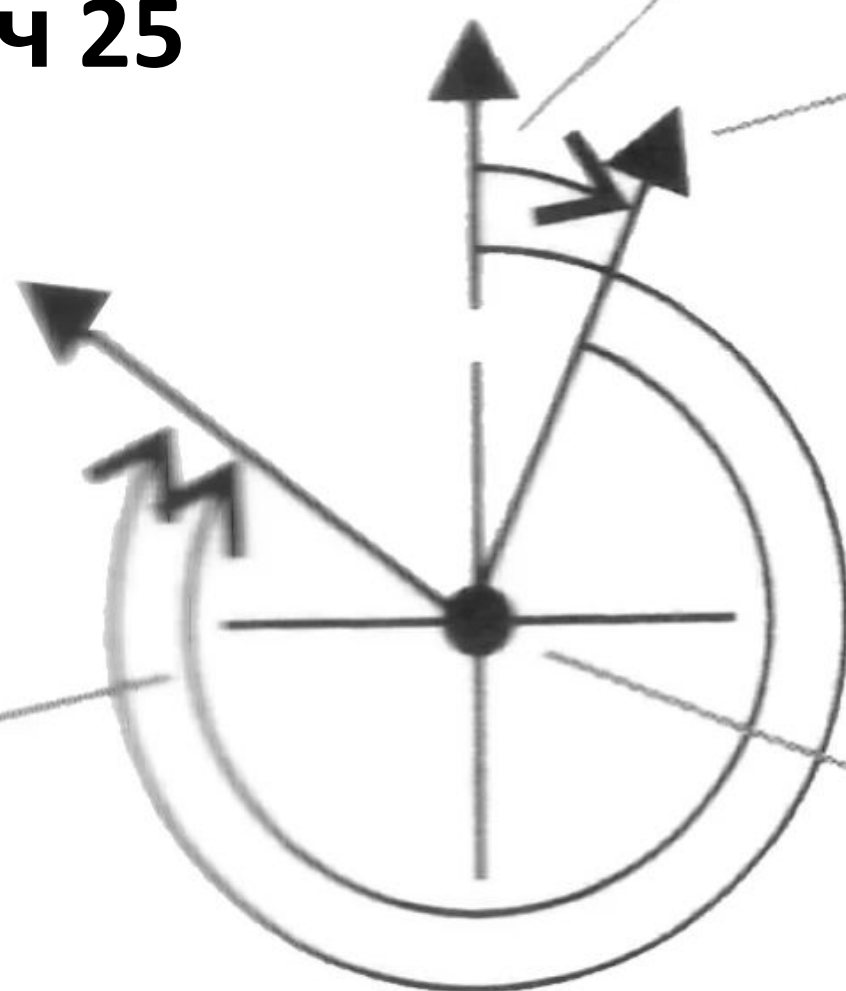
ИСТИННЫЙ  
север  $0^{\circ}$

магнитный  
север

ИСТИННЫЙ  
азимут

точка А

магнитный  
азимут  $278^{\circ}$



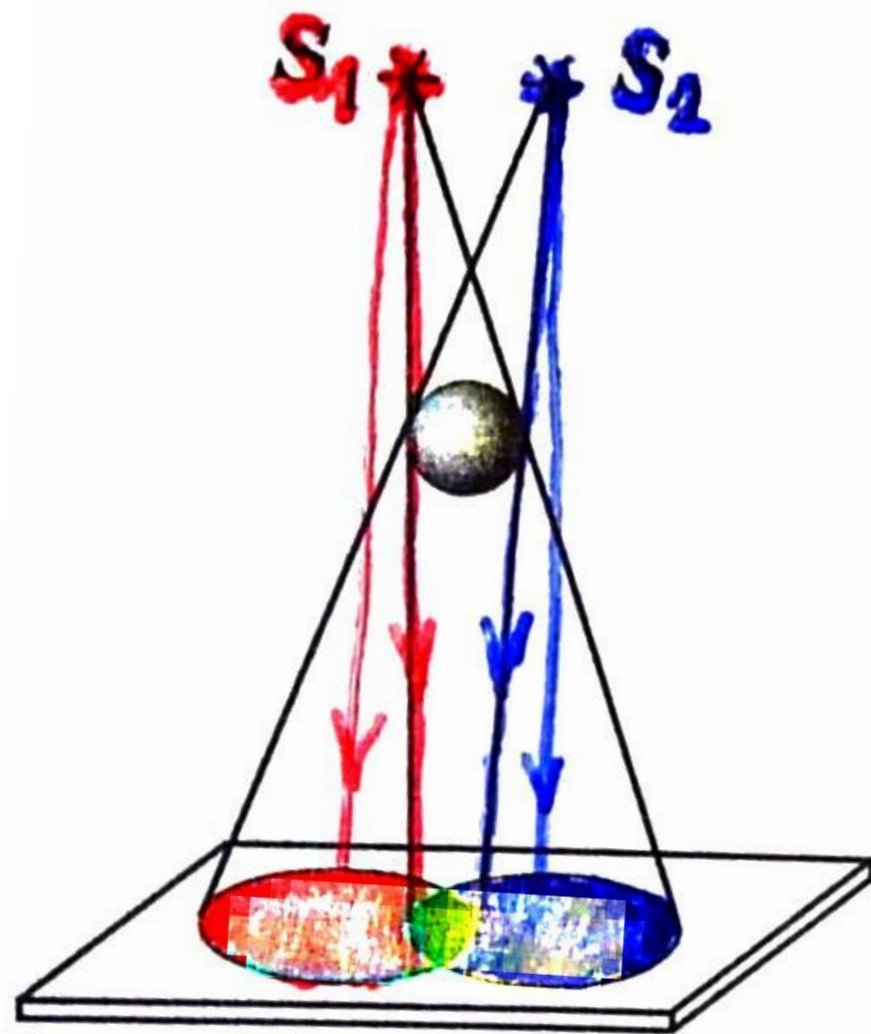
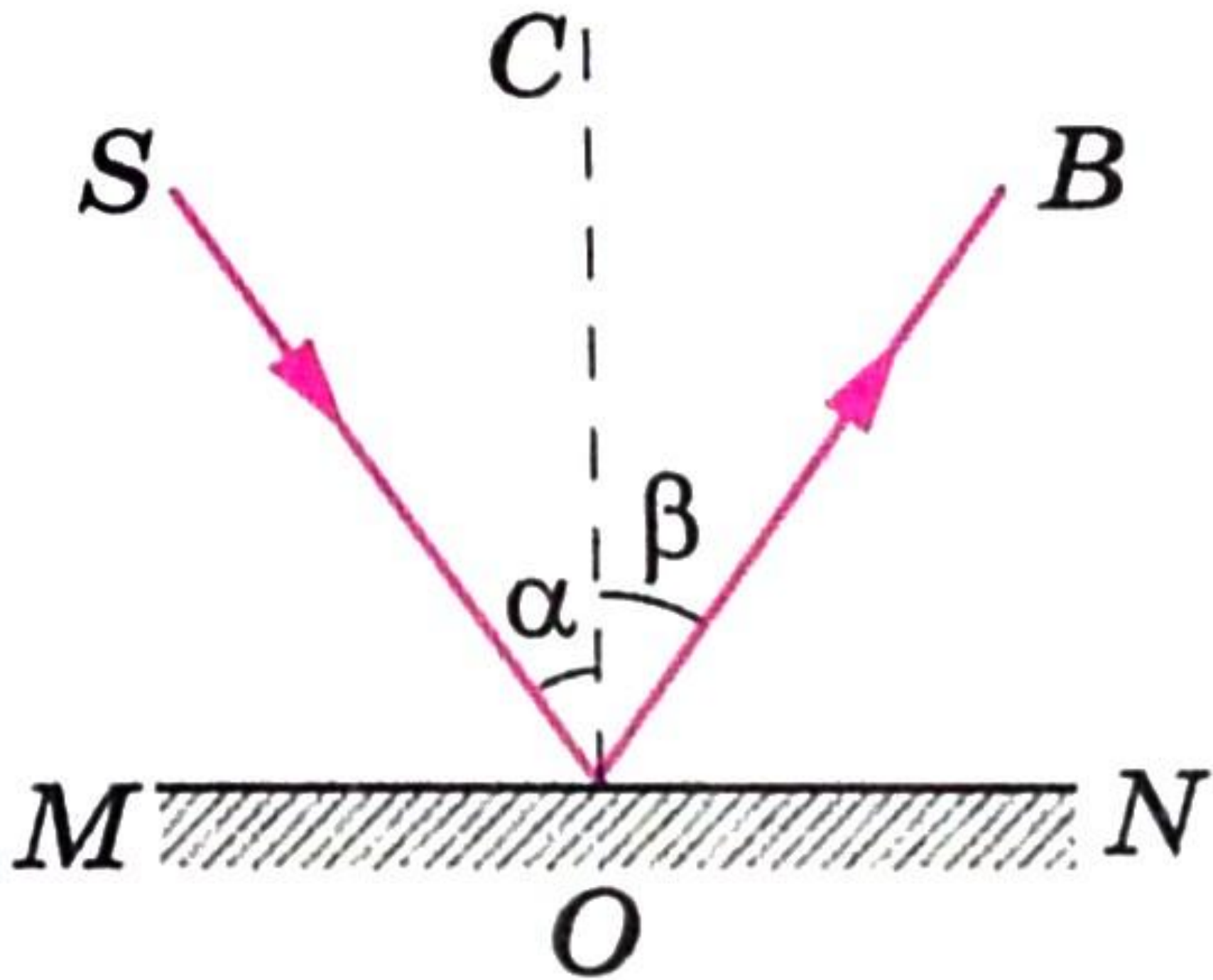
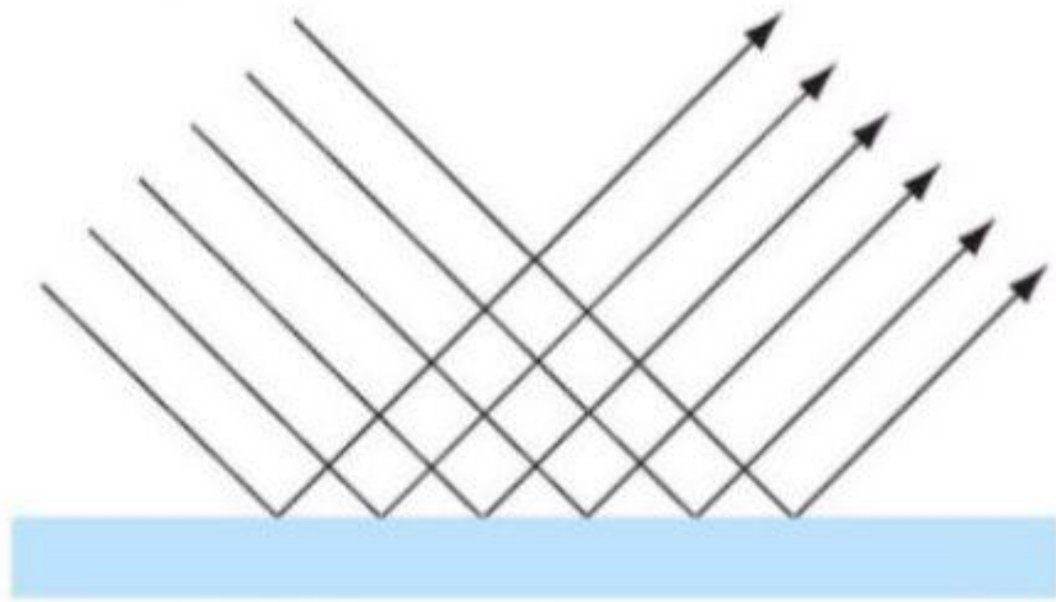
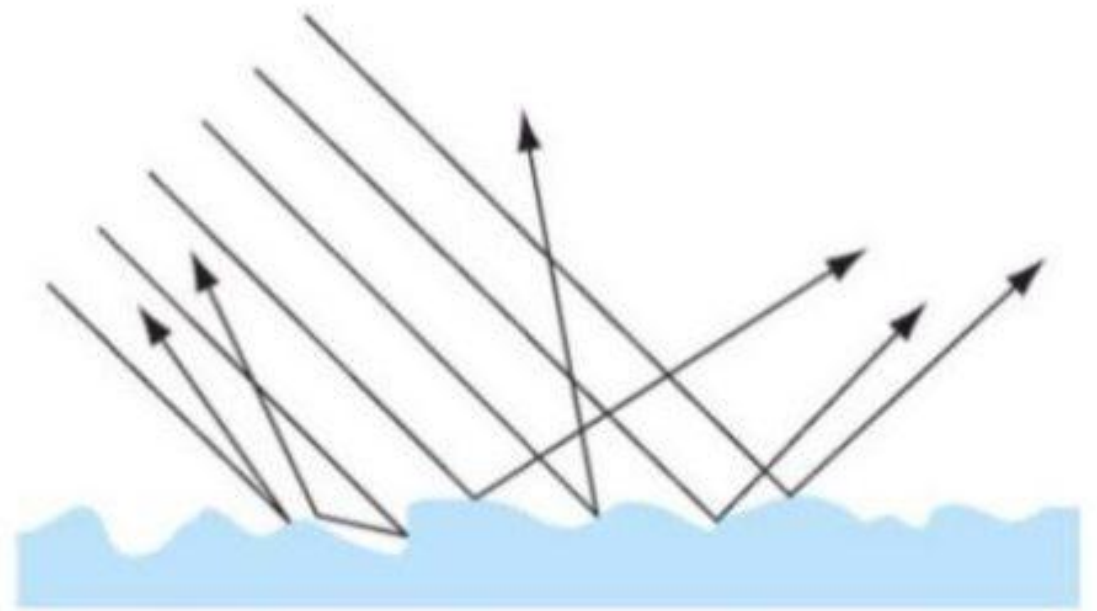


Рис. 129

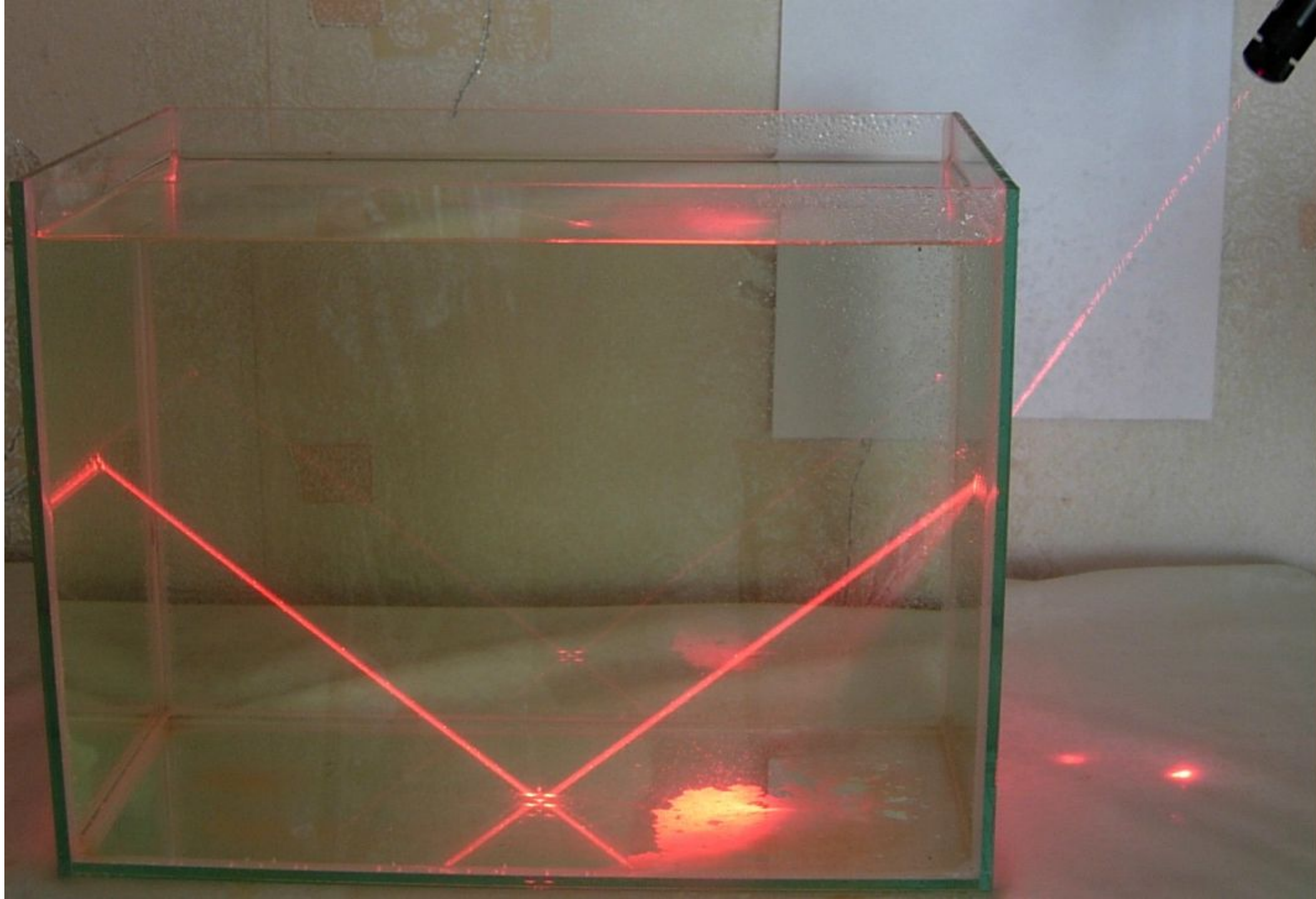


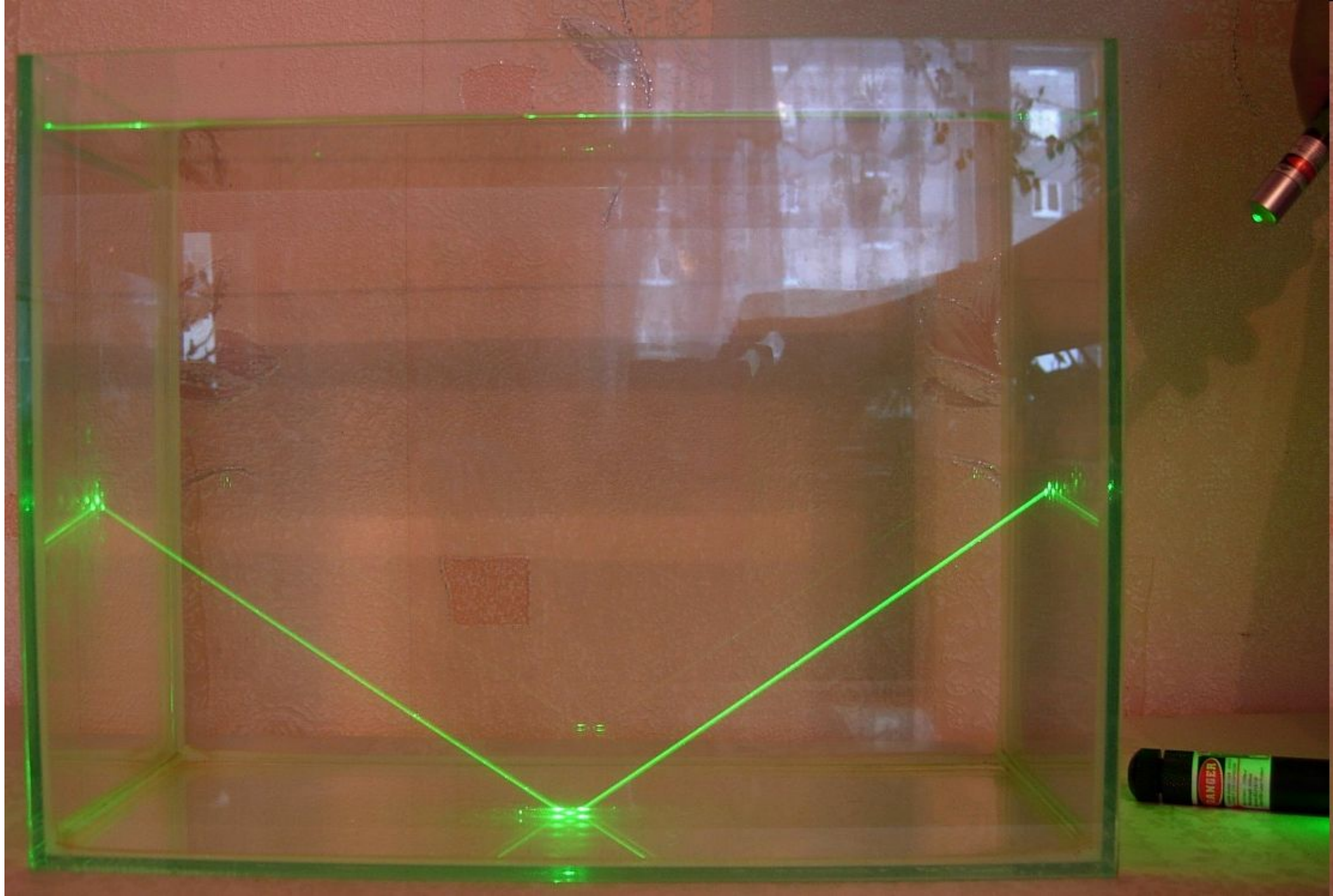


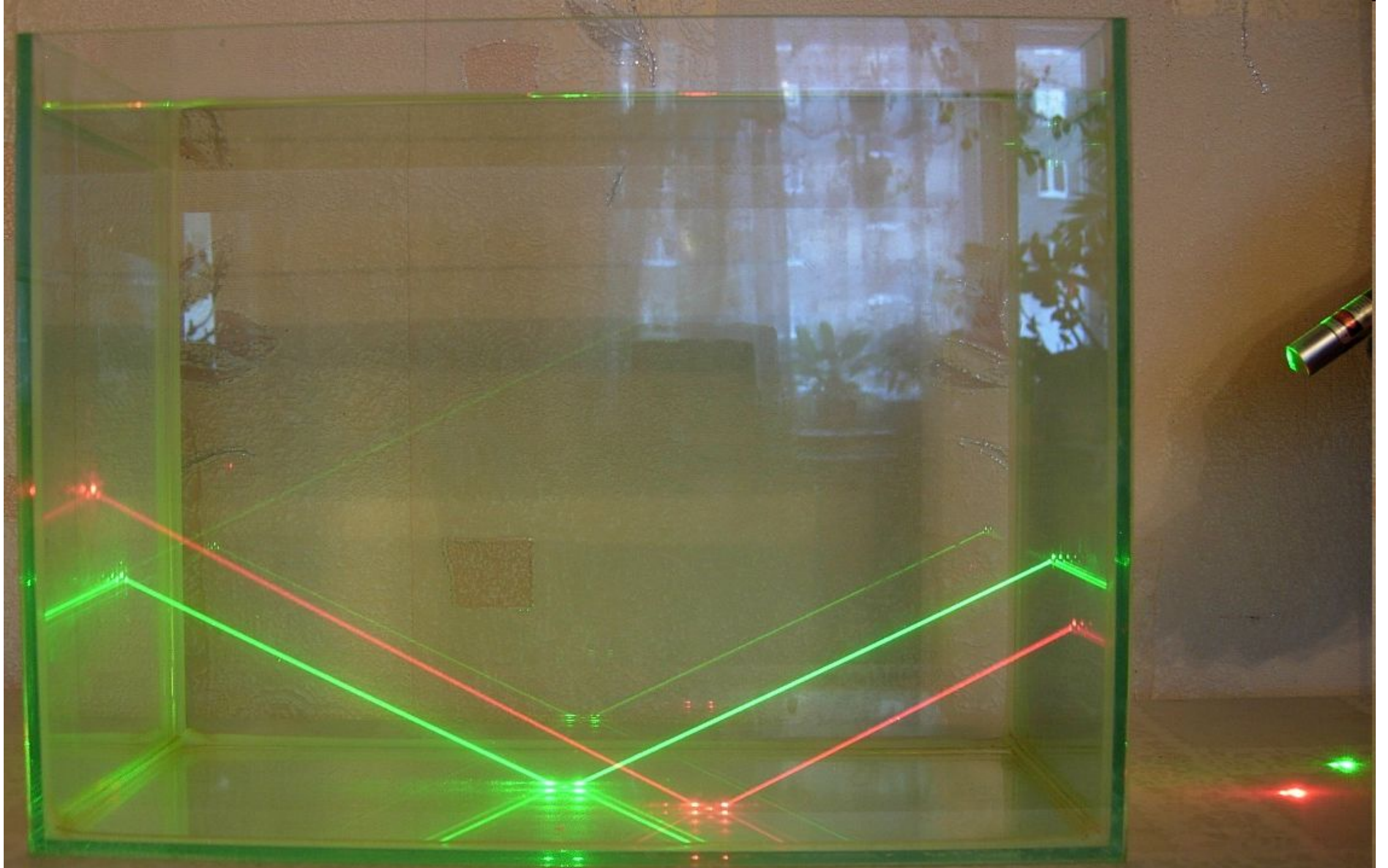
Гладкая поверхность  
(зеркальное отражение)

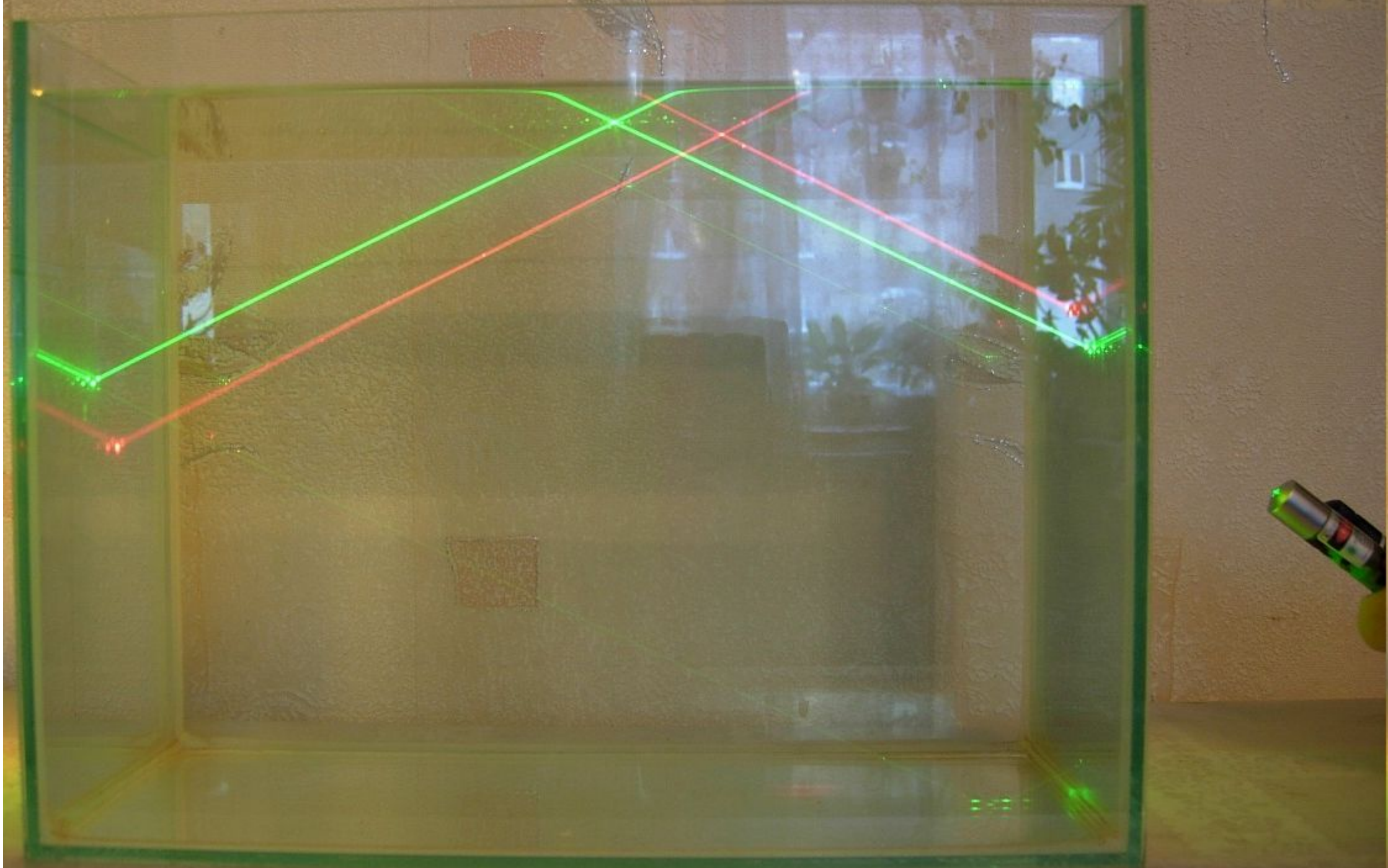


Шероховатая поверхность  
(диффузное отражение)

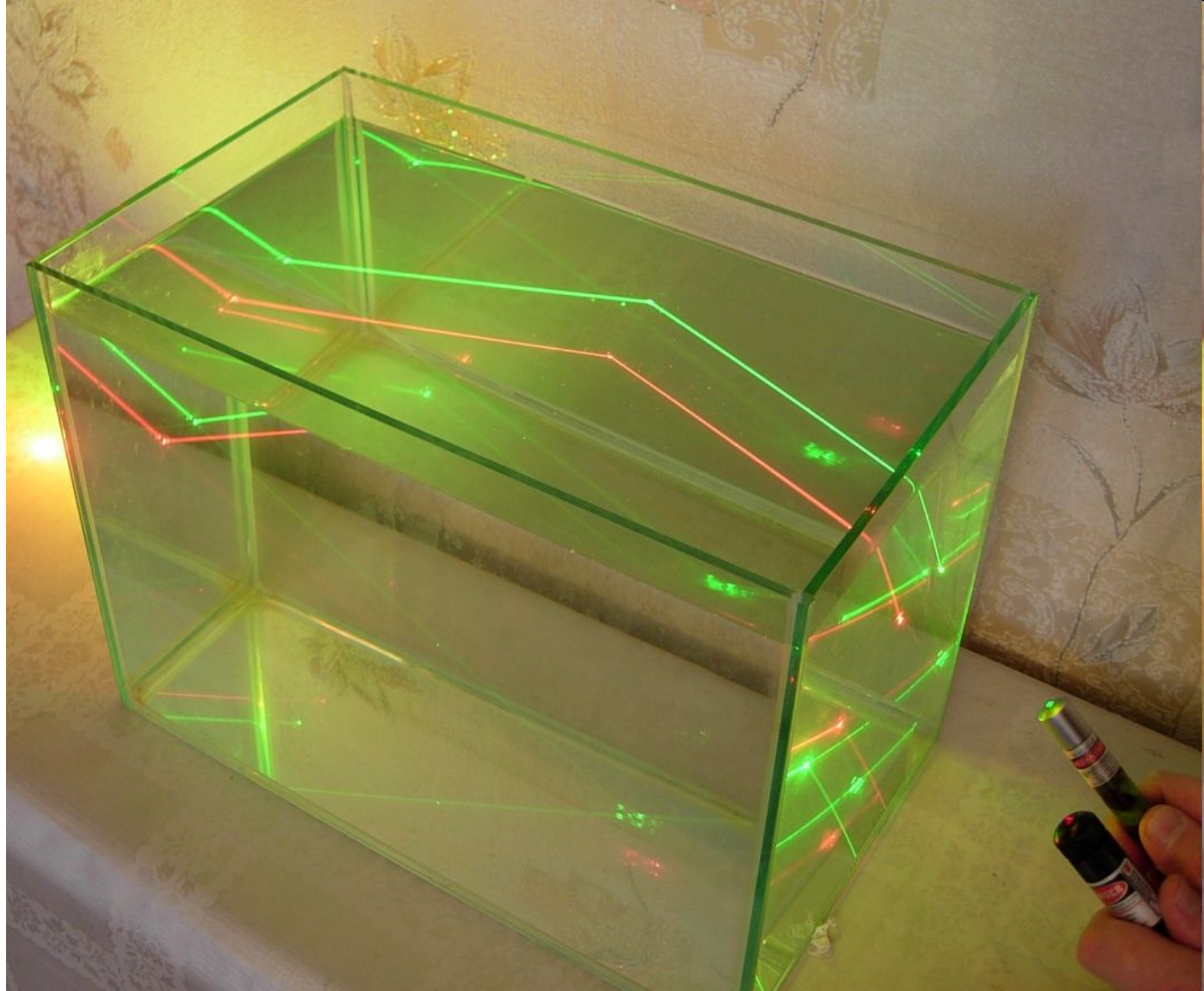














**RAY OPTICS  
DEMONSTRATION SET**

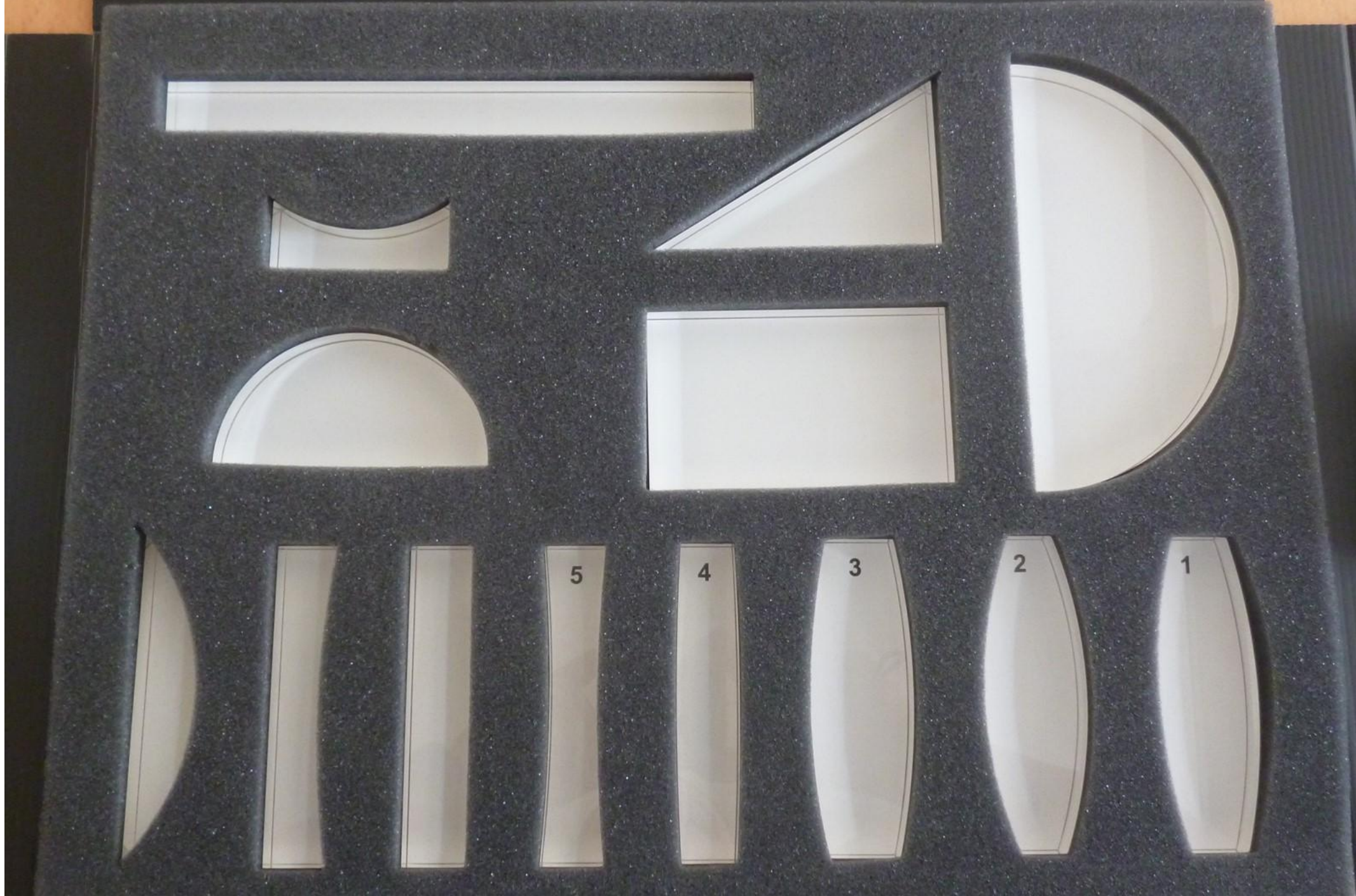


  
Complies with FDA  
performance standards for  
laser products exempt for  
consumer participation in Laser  
Notice No. 50 issued June 24, 2007

**LASER LIGHT  
DO NOT STARE  
INTO BEAM**

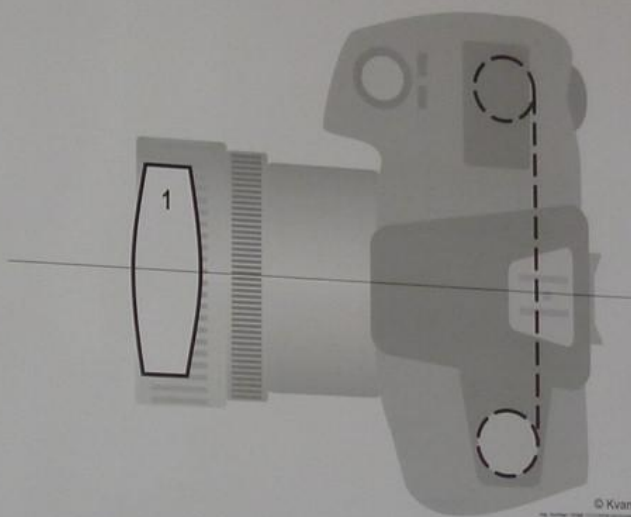
CLASS 2 LASER PRODUCT  
E88 100, c11W CW (Red)  
CLASSIFIED 10/2005-1-2007

**LASER  
RAY  
BOX**

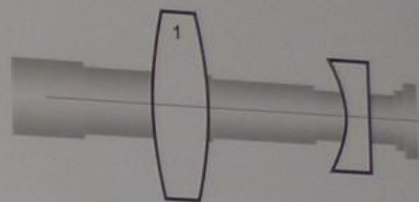


**A**

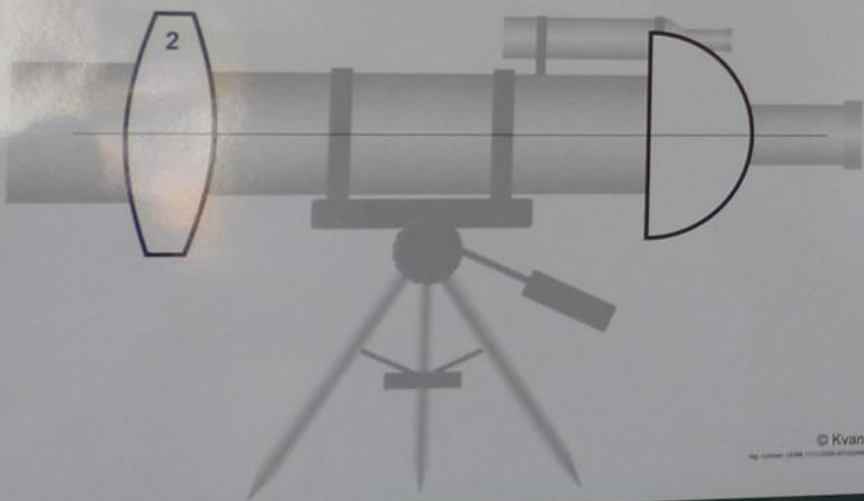
© Kvant

**B**

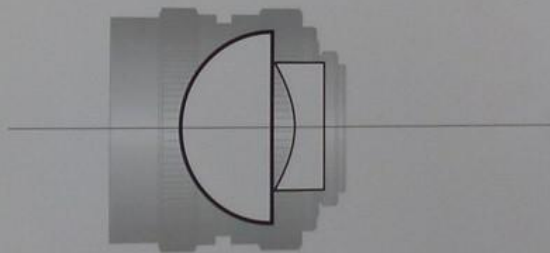
© Kvant

**C**

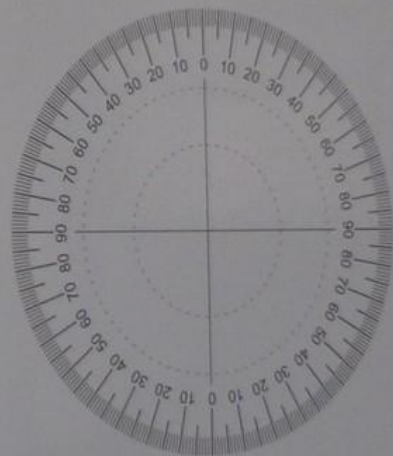
© Kvant

**D**

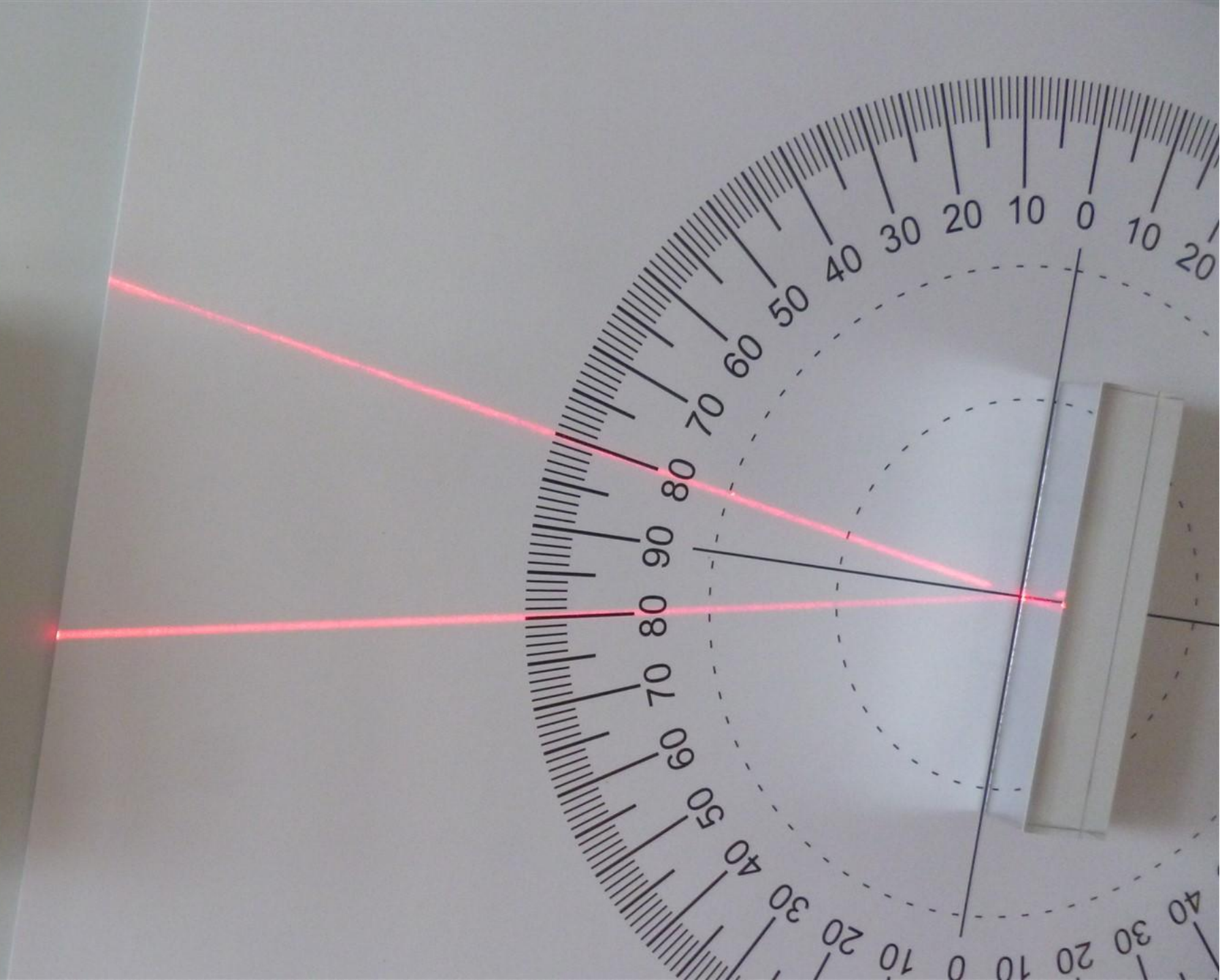
© Kvant

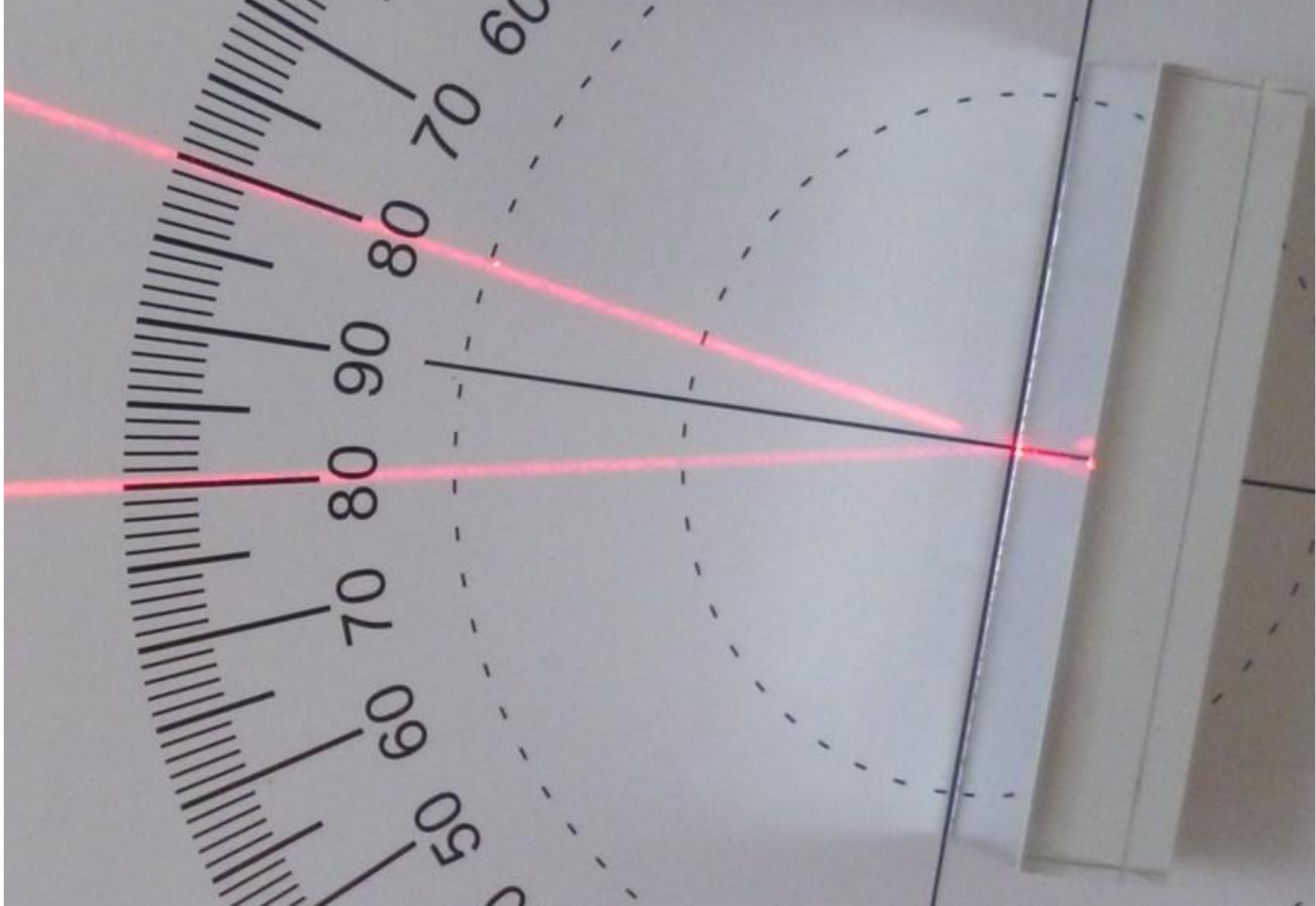
**E**

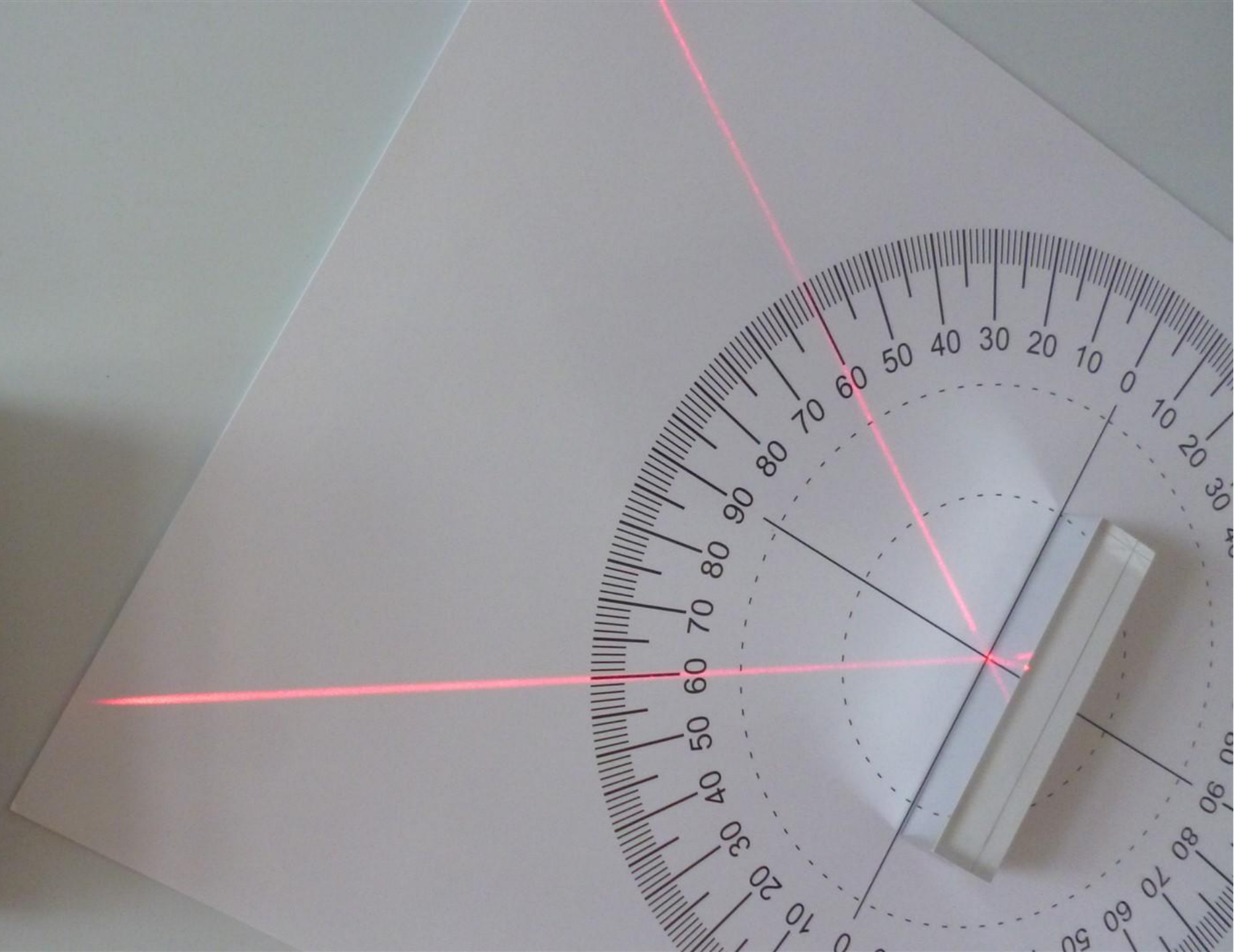
© Kvant

**F**

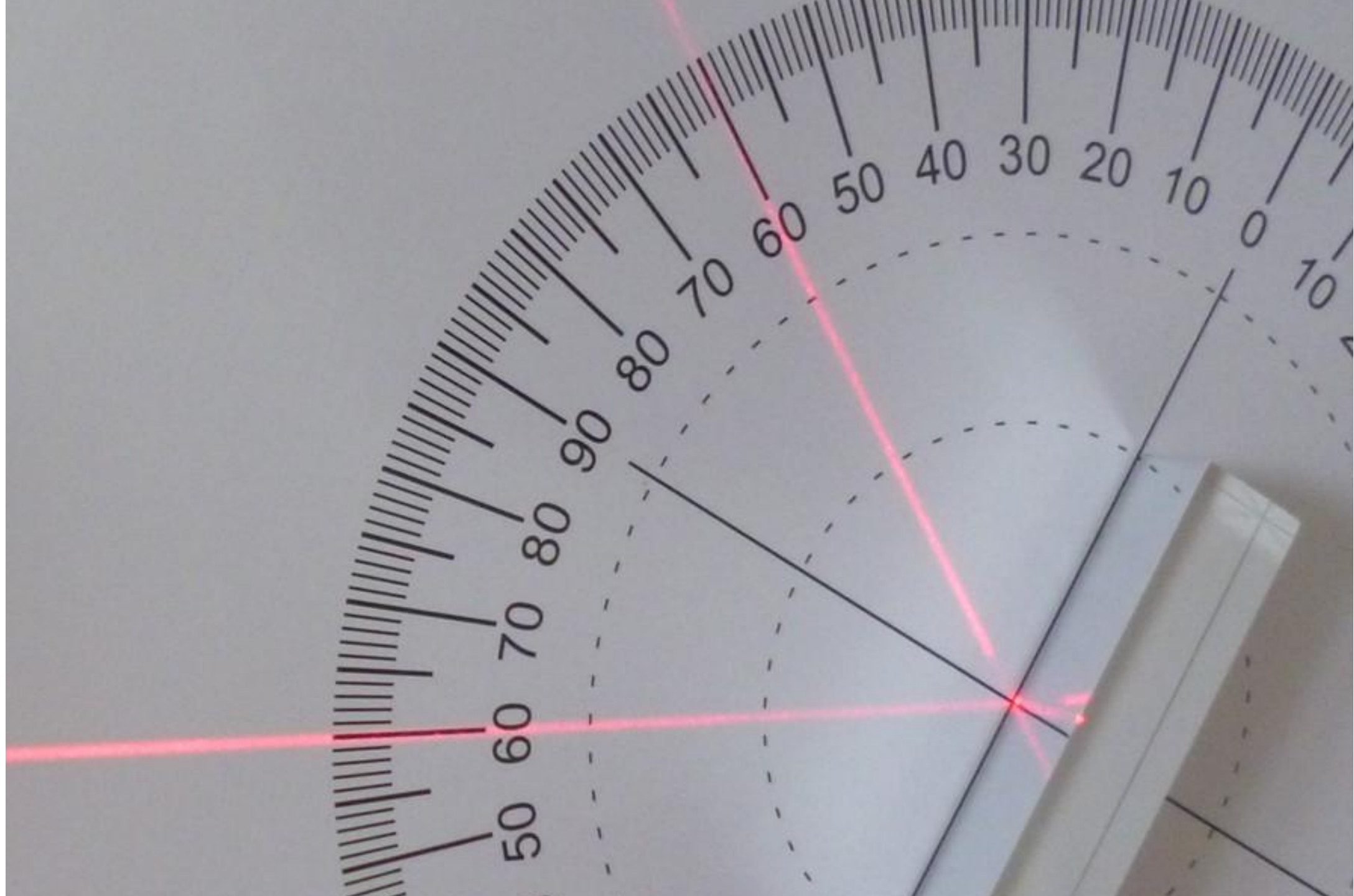
© Kvant





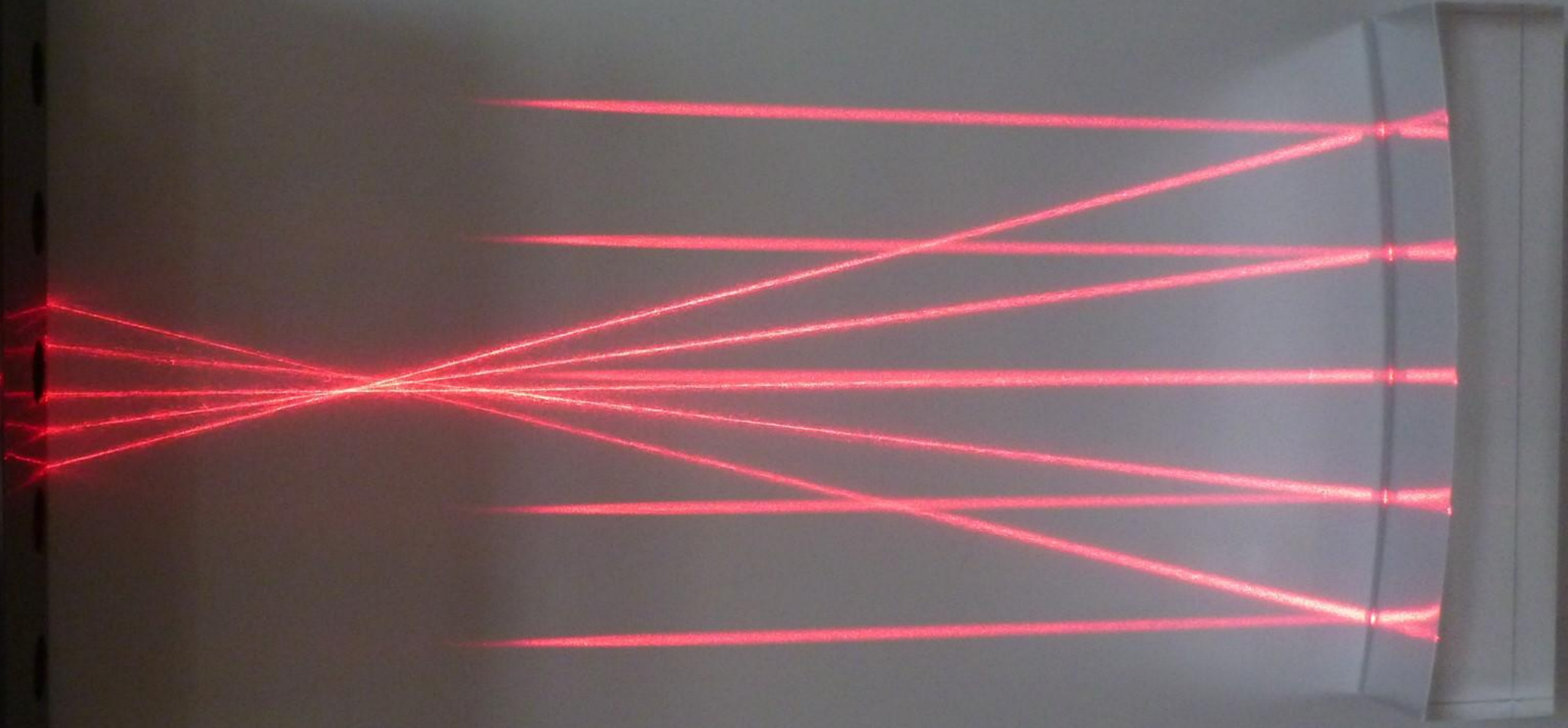






RED LIGHT  
STARE  
BEAM  
LASER PRODUCT  
CLASS II (Red)  
80009-1 2007

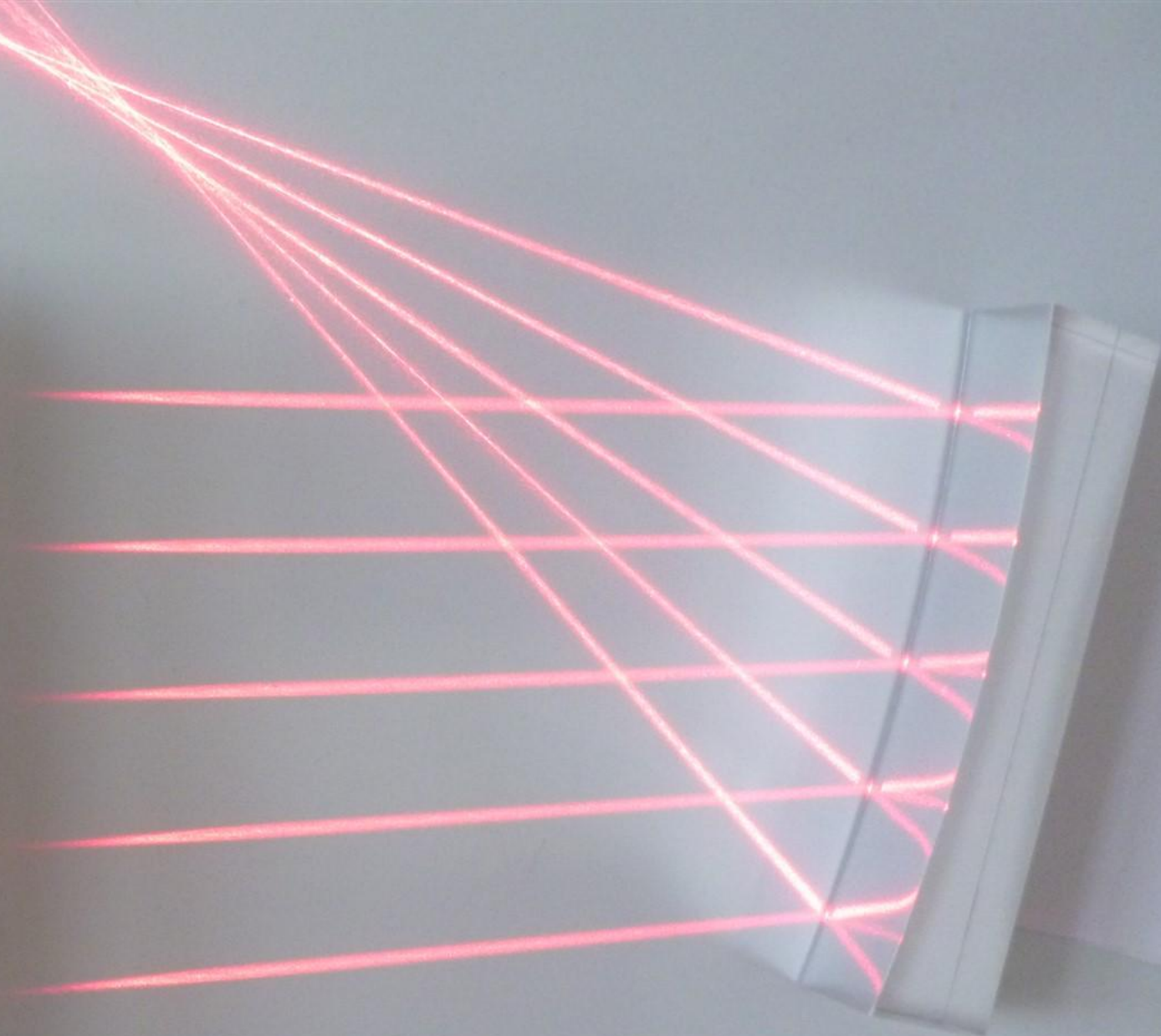
LASER  
RAY  
BOX

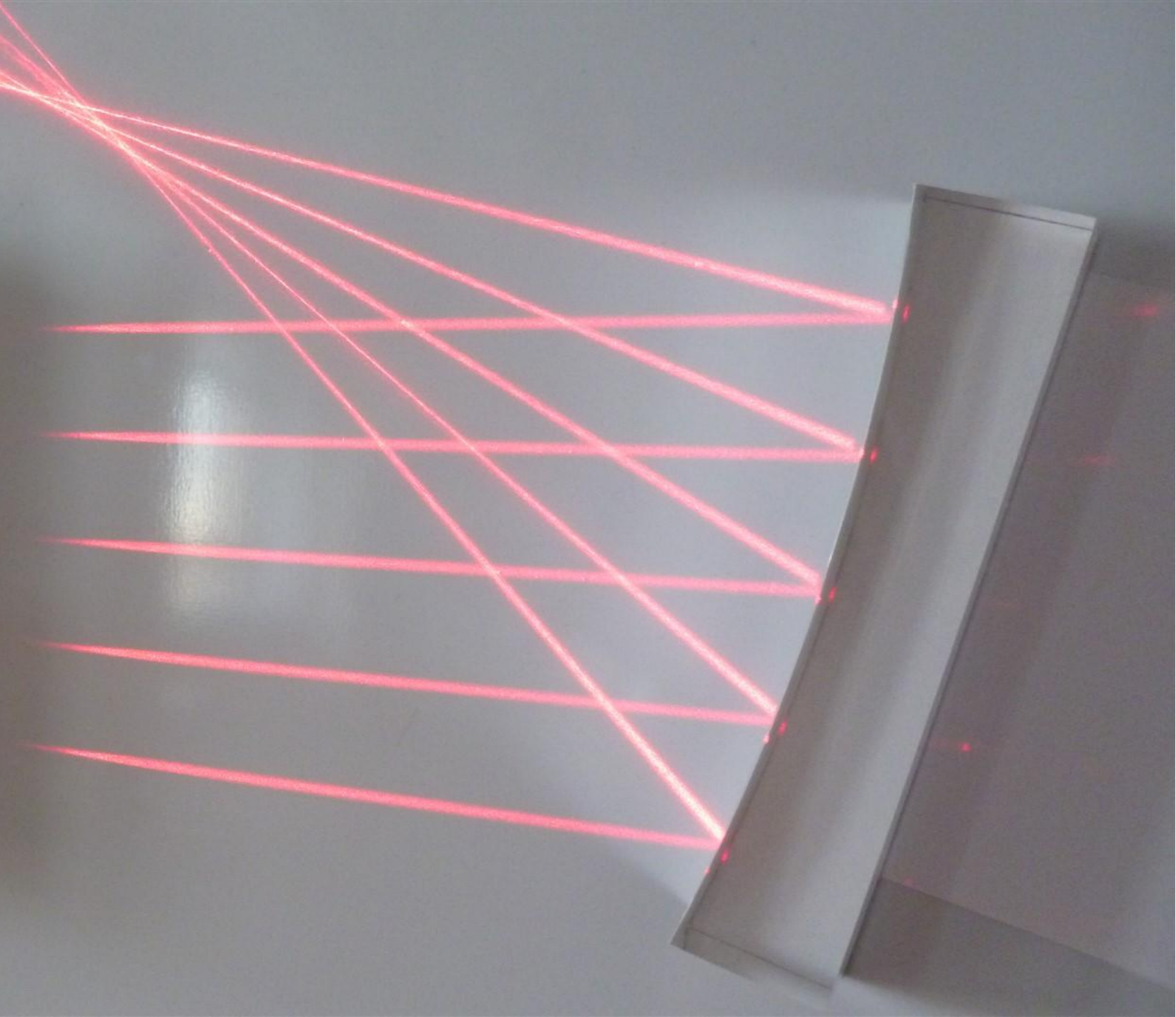


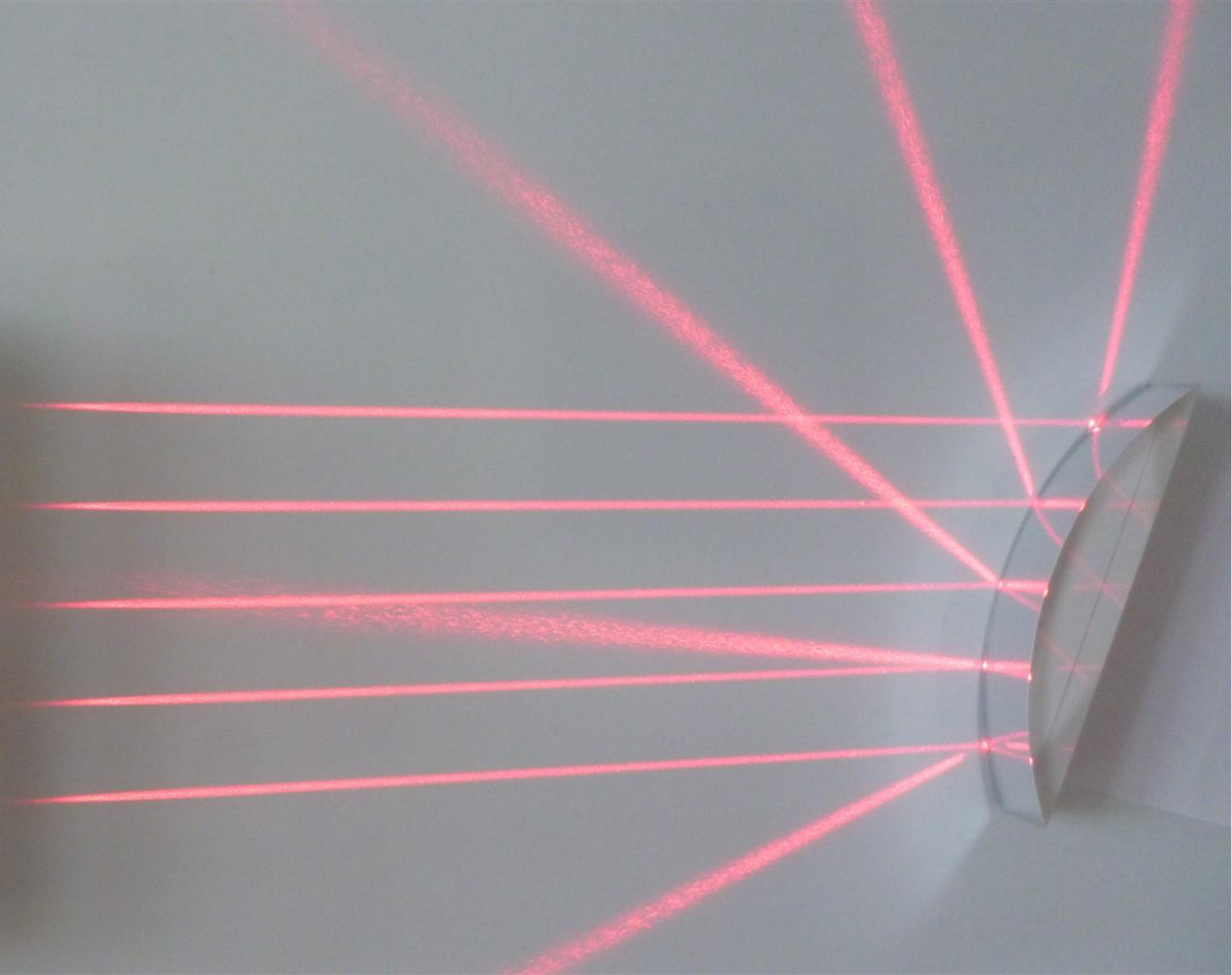
**LASER LIGHT  
DO NOT STARE  
INTO BEAM**

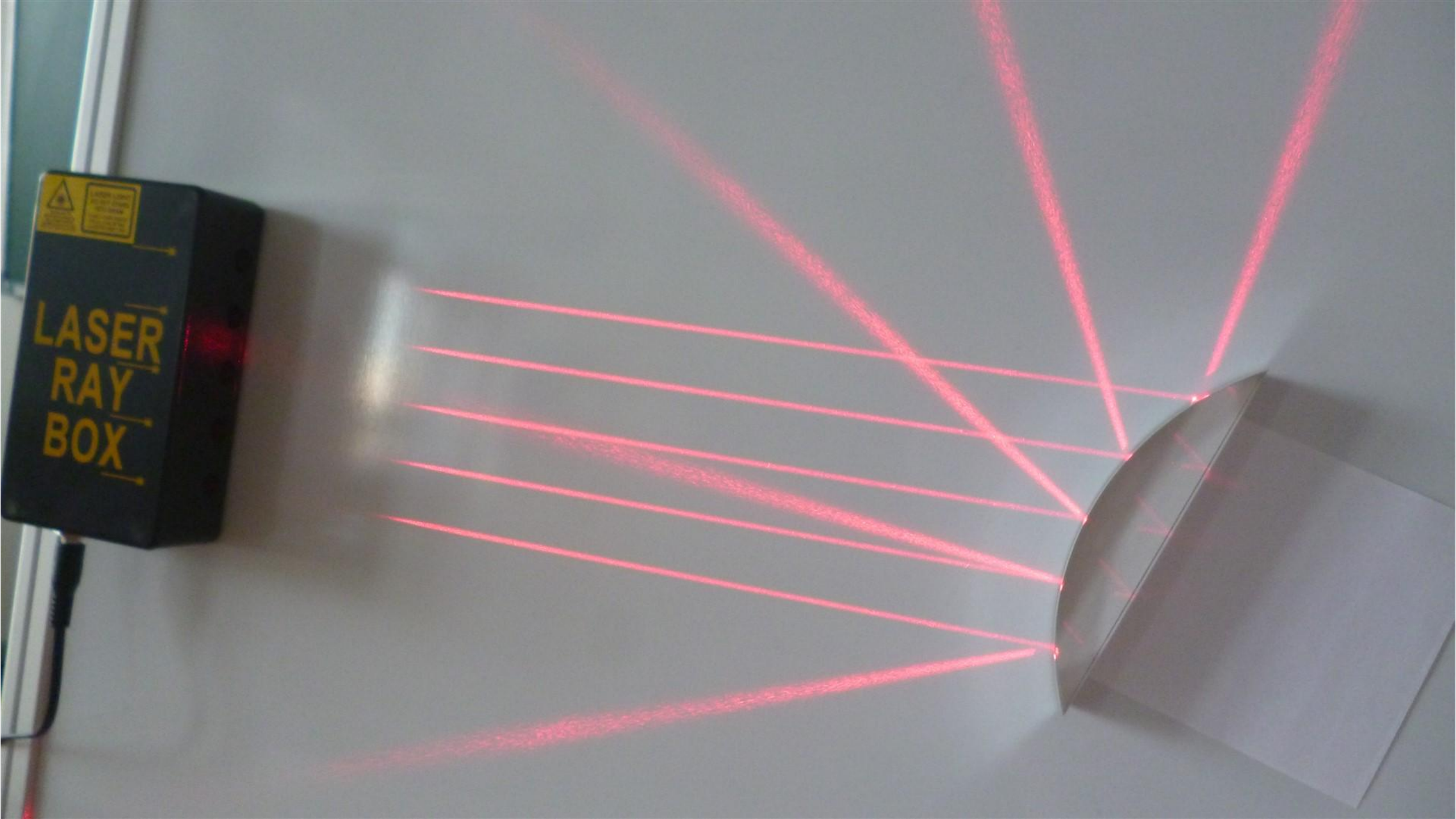
**CLASS 2 LASER PRODUCT**  
635 nm, <1mW CW (Red)  
CLASSIFIED 60825-1 2007

**LASER  
RAY  
BOX**

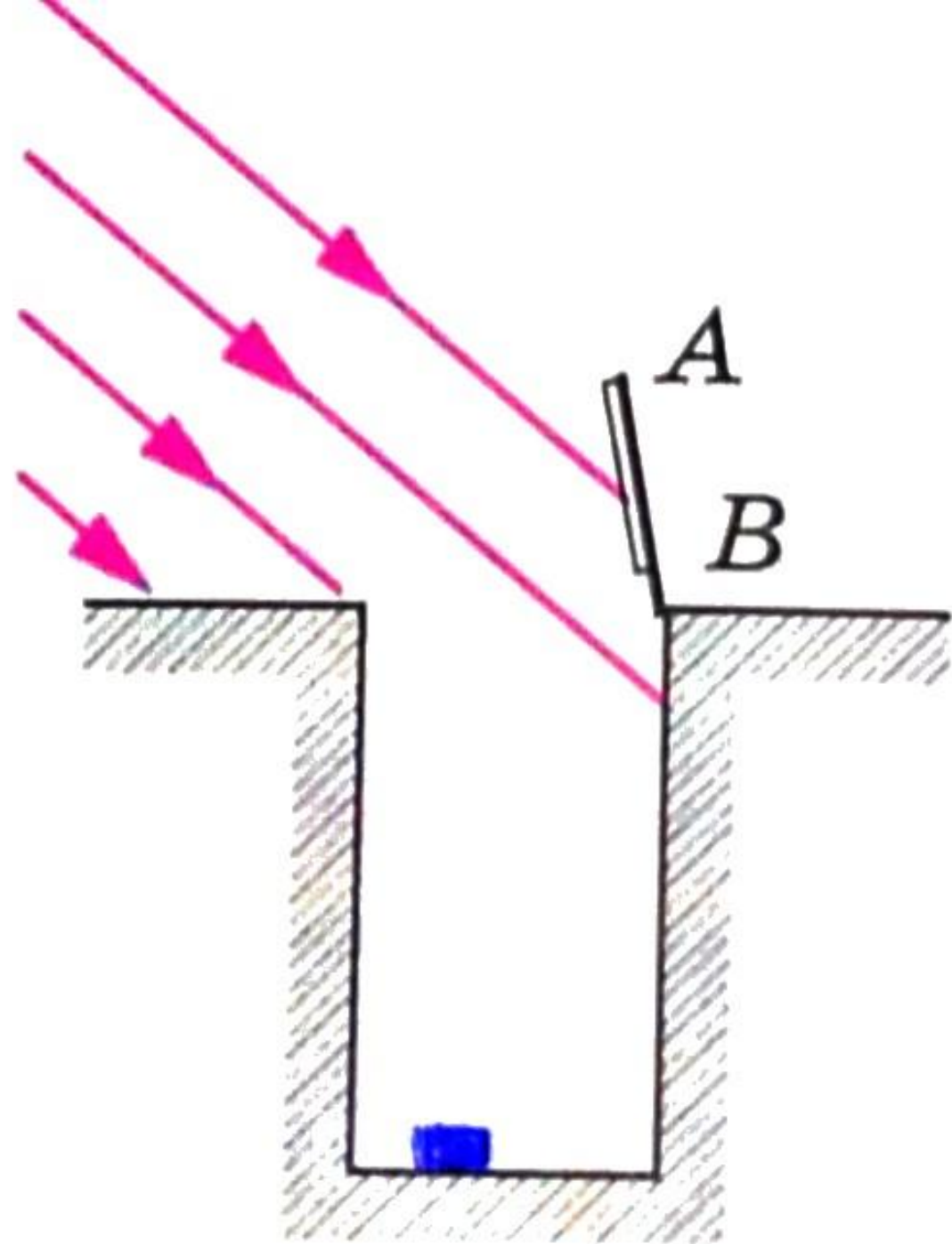








LASER  
RAY  
BOX



1500

Э



Рис. 368

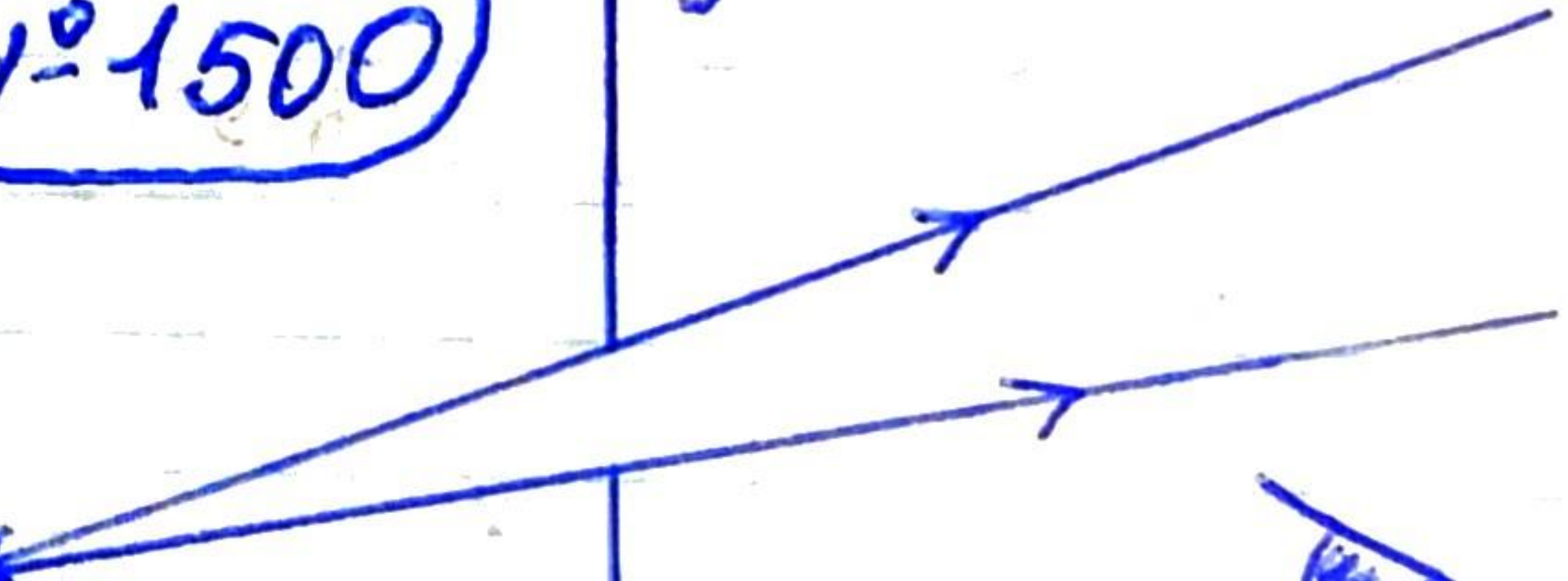


Nº 1500

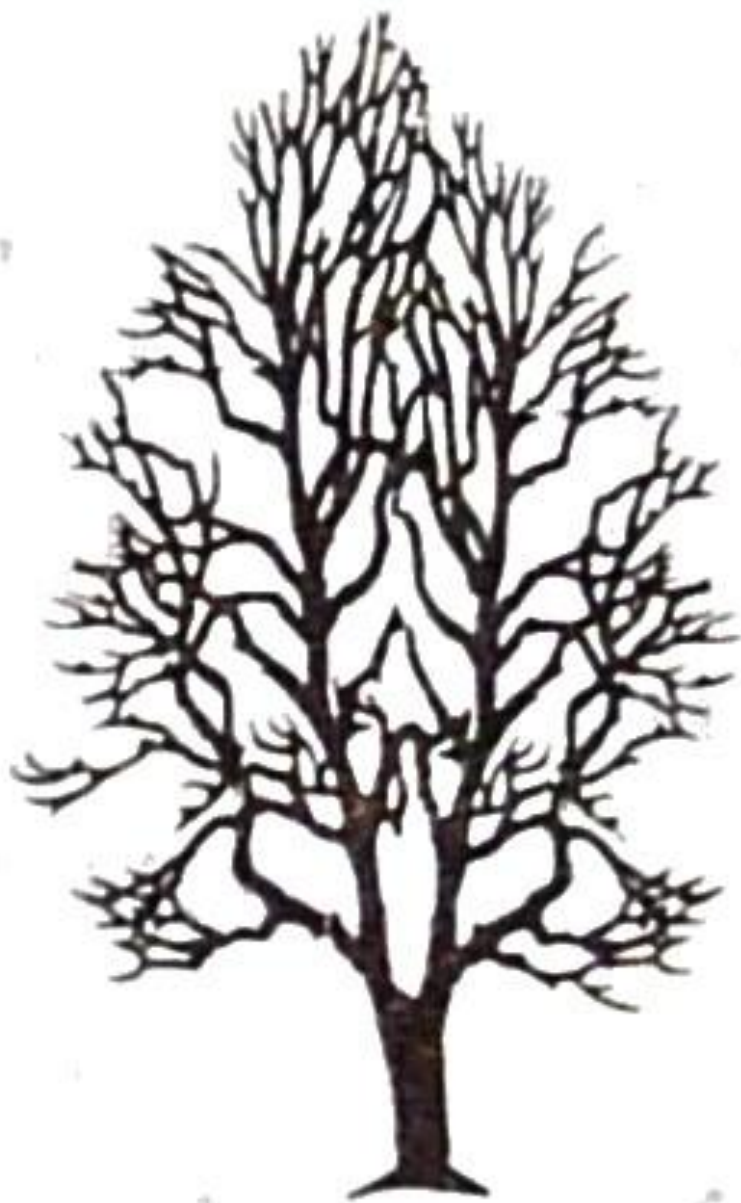
33



50



1502



•A

№ 1502

