

# ЗАВОД КОМПАНИИ BOMBAU SARPHIRE «ЛЭВЕСТОК-МИЛЛ»

Леготкина А.А. АП-35





**Название проекта:** завод по производству спиртов Bombay, завод в Лаверстоке.

**Местоположение:** Лаверсток, Хэмпшир, Великобритания.

**Категория:** промышленный

**Дата ввода в эксплуатацию:** 2010 г.

**Завершение:** сентябрь 2014 г.

**Заказчик:** Компания Bombay Spirits Company Ltd.

**Объем услуг:** ведущий дизайнер

**Площадь участка:** 20235 кв.м.

**Общая площадь пола:** 4500 кв.м.

**Производственные помещения:** 2000 кв.м.

**Тропический дом:** 11 м в высоту и 9 м по

**Средиземноморский дом:** 15 м в высоту x 12 м по

**Команда проекта:** Томас Хезервик, Катерина

Дионисопулу, Элиот Постма, Альма Ван, Вилле

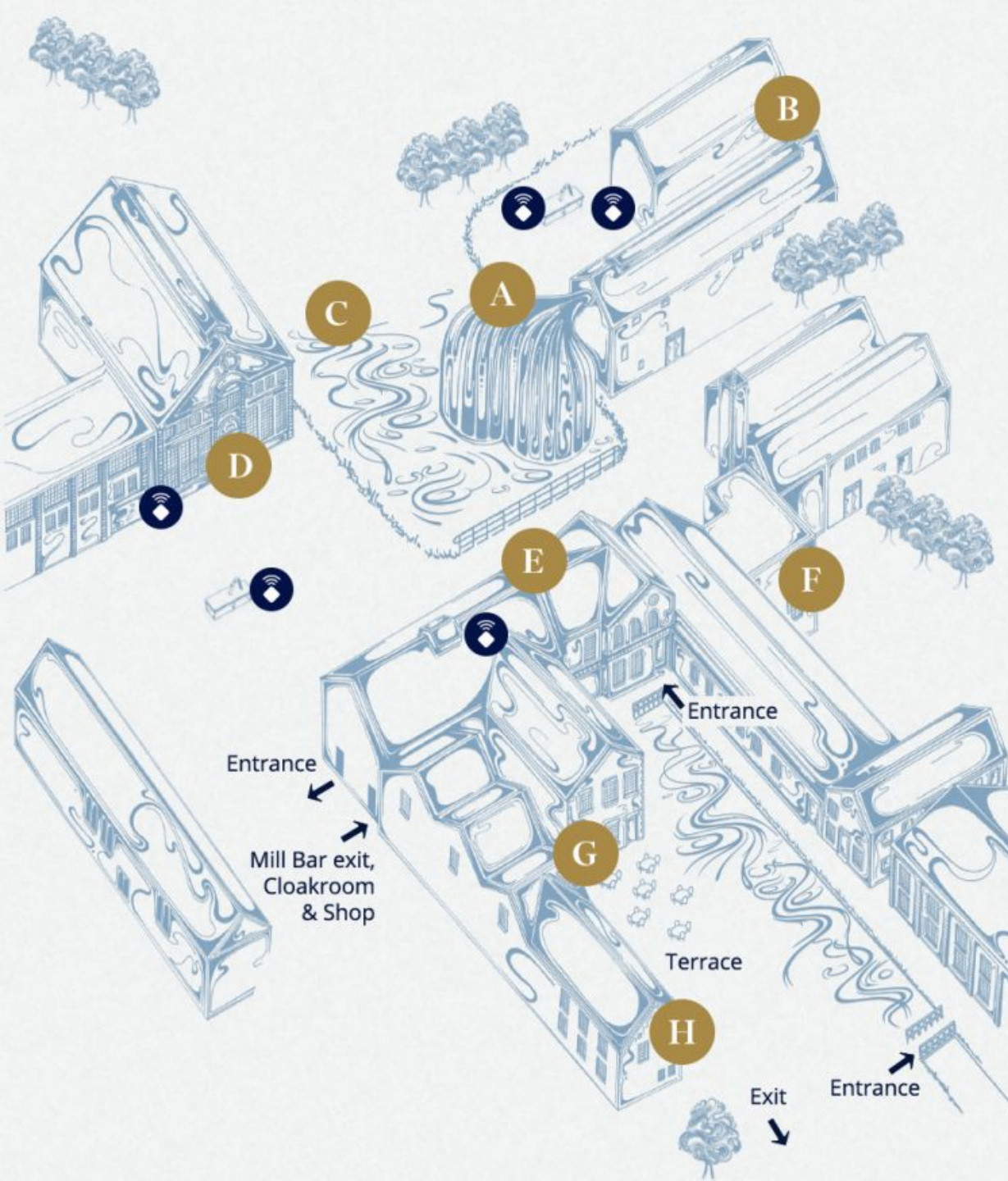
Саарикоски







- |          |                          |           |                        |           |                          |           |                         |
|----------|--------------------------|-----------|------------------------|-----------|--------------------------|-----------|-------------------------|
| <b>1</b> | Tank Farm                | <b>8</b>  | Dry Room               | <b>15</b> | Facilities               | <b>22</b> | Mill Bar                |
| <b>2</b> | MCC                      | <b>9</b>  | Carterhead Still House | <b>16</b> | Gallery                  | <b>23</b> | Vault                   |
| <b>3</b> | India House              | <b>10</b> | Energy Center          | <b>17</b> | Daiken House             | <b>24</b> | Gin Shop                |
| <b>4</b> | Botanical Store          | <b>11</b> | Sprinkler Tank         | <b>18</b> | Restaurant               | <b>25</b> | Master Distillers House |
| <b>5</b> | Gatehouse                | <b>12</b> | Pump House             | <b>19</b> | Cafe                     | <b>26</b> | Cottages                |
| <b>6</b> | Tropical Glasshouse      | <b>13</b> | Storage                | <b>20</b> | Laverstoke Heritage Room | <b>27</b> | Coach House             |
| <b>7</b> | Mediterranean Glasshouse | <b>14</b> | Filter Room            | <b>21</b> | Entrance Hall            |           |                         |

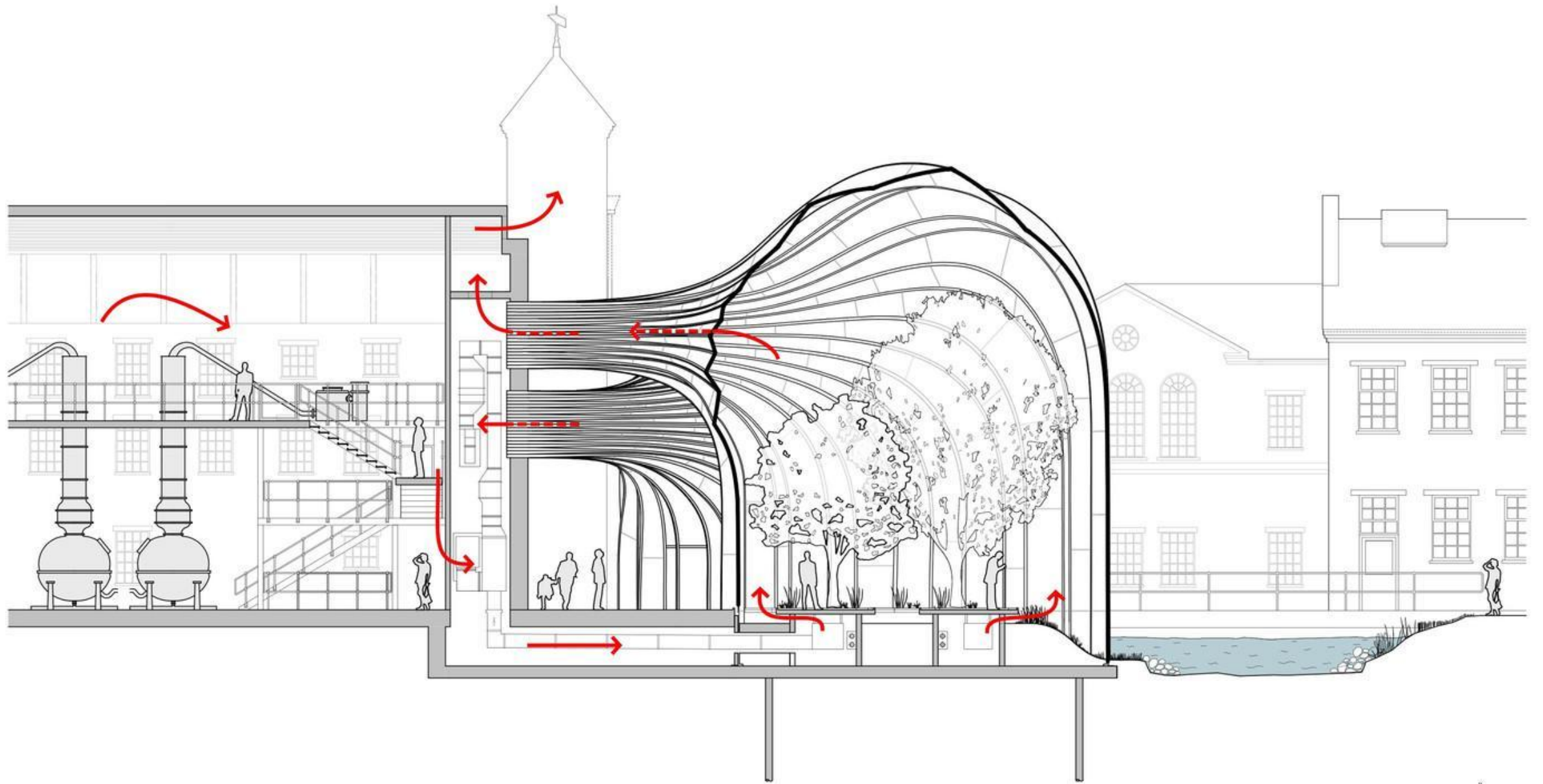


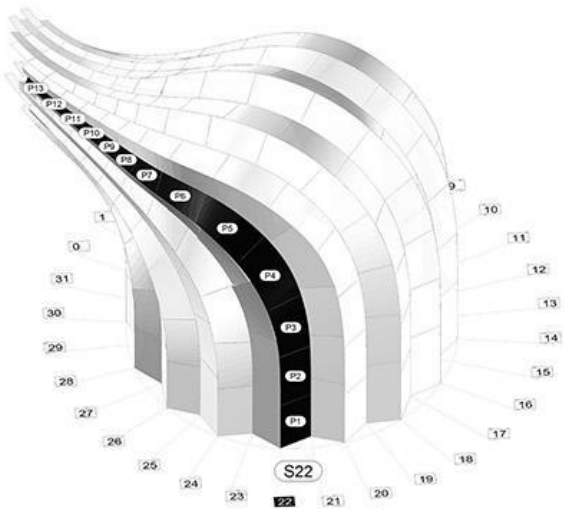












 L1: 1.798 L2: 1.798 W1: 1.201 W2: 1.201 Radius: +50 Area: 2.158 S_10 P_1	 L1: 2.397 L2: 2.395 W1: 1.201 W2: 1.201 Radius: 2.888 Area: 2.888 S_10 P_2	 L1: 1.997 L2: 2.395 W1: 1.201 W2: 1.201 Radius: 32.141 Area: 2.896 S_10 P_3	 L1: 1.797 L2: 2.395 W1: 1.445 W2: 1.174 Radius: 21.805 Area: 2.711 S_10 P_4	 L1: 2.395 L2: 1.598 W1: 1.445 W2: 1.174 Radius: 19.502 Area: 1.826 S_10 P_5	 L1: 2.195 L2: 1.798 W1: 1.174 W2: 0.707 Radius: 14.122 Area: 0.731 S_10 P_6	 L1: 1.197 L2: 1.798 W1: 0.924 W2: 0.924 Radius: 17.907 Area: 0.375 S_10 P_7	 L1: 0.798 L2: 0.799 W1: 0.344 W2: 0.422 Radius: 20.659 Area: 0.303 S_10 P_8	 L1: 0.799 L2: 0.798 W1: 0.344 W2: 0.422 Radius: 18.842 Area: 0.251 S_10 P_9	 L1: 0.799 L2: 0.798 W1: 0.344 W2: 0.422 Radius: 18.842 Area: 0.214 S_10 P_10	 L1: 0.799 L2: 0.798 W1: 0.344 W2: 0.422 Radius: 17.153 Area: 0.188 S_10 P_11	 L1: 0.799 L2: 0.798 W1: 0.211 W2: 0.249 Radius: 13.489 Area: 0.173 S_10 P_12	 L1: 0.799 L2: 0.798 W1: 0.211 W2: 0.249 Radius: 30.266 Area: 0.166 S_10 P_13	 L1: 0.799 L2: 0.798 W1: 0.211 W2: 0.249 Radius: 30.266 Area: 0.162 S_10 P_14	 L1: 0.798 L2: 0.798 W1: 0.202 W2: 0.202 Radius: 32.333 Area: 0.162 S_10 P_15	
 L1: 2.207 L2: 2.195 W1: 1.201 W2: 1.201 Radius: +50 Area: 2.643 S_11 P_1	 L1: 2.207 L2: 2.195 W1: 1.214 W2: 1.201 Radius: +50 Area: 2.649 S_11 P_2	 L1: 2.207 L2: 2.195 W1: 1.207 W2: 1.274 Radius: 15.806 Area: 2.777 S_11 P_3	 L1: 2.41 L2: 1.994 W1: 1.487 W2: 1.274 Radius: 5.878 Area: 3.124 S_11 P_4	 L1: 2.407 L2: 1.793 W1: 1.391 W2: 1.498 Radius: 4.587 Area: 3.062 S_11 P_5	 L1: 2.407 L2: 2.186 W1: 0.951 W2: 1.392 Radius: 4.859 Area: 2.071 S_11 P_6	 L1: 1.808 L2: 1.797 W1: 0.662 W2: 0.695 Radius: 8.351 Area: 1.43 S_11 P_7	 L1: 1.197 L2: 1.003 W1: 0.662 W2: 0.695 Radius: 41.995 Area: 0.624 S_11 P_8	 L1: 0.798 L2: 0.803 W1: 0.496 W2: 0.4 Radius: 13.654 Area: 0.553 S_11 P_9	 L1: 0.798 L2: 0.803 W1: 0.4 W2: 0.324 Radius: 12.114 Area: 0.285 S_11 P_10	 L1: 0.798 L2: 0.802 W1: 0.267 W2: 0.267 Radius: 11.89 Area: 0.232 S_11 P_11	 L1: 0.798 L2: 0.803 W1: 0.226 W2: 0.206 Radius: 6.936 Area: 0.193 S_11 P_12	 L1: 0.798 L2: 0.803 W1: 0.226 W2: 0.206 Radius: 5.184 Area: 0.168 S_11 P_13	 L1: 0.203 L2: 0.205 W1: 0.2 W2: 0.201 Radius: 3.806 Area: 0.04 S_11 P_14	 L1: 0.798 L2: 0.802 W1: 0.202 W2: 0.202 Radius: 6.531 Area: 0.16 S_11 P_15	 L1: 0.803 L2: 0.796 W1: 0.206 W2: 0.202 Radius: 6.859 Area: 0.163 S_11 P_16
 L1: 1.806 L2: 1.798 W1: 1.201 W2: 1.201 Radius: +50 Area: 2.164 S_12 P_1	 L1: 2.396 L2: 2.408 W1: 1.201 W2: 1.207 Radius: +50 Area: 2.859 S_12 P_2	 L1: 2.398 L2: 2.207 W1: 1.207 W2: 1.274 Radius: 25.119 Area: 2.834 S_12 P_3	 L1: 2.398 L2: 2.066 W1: 1.274 W2: 1.449 Radius: 25.119 Area: 2.999 S_12 P_4												
 L1: 2.2 L2: 2.198 W1: 1.201 W2: 1.201 Radius: +50 Area: 2.641 S_13 P_1	 L1: 2.2 L2: 2.198 W1: 1.201 W2: 1.201 Radius: +50 Area: 2.641 S_13 P_2	 L1: 2.2 L2: 2.198 W1: 1.207 W2: 1.207 Radius: 37.506 Area: 2.648 S_13 P_3	 L1: 2.201 L2: 2.198 W1: 1.206 W2: 1.207 Radius: 8.387 Area: 2.671 S_13 P_4												
 L1: 1.6 L2: 1.605 W1: 1.201 W2: 1.201 Radius: +50 Area: 1.924 S_14 P_1	 L1: 2.2 L2: 2.206 W1: 1.201 W2: 1.201 Radius: +50 Area: 2.645 S_14 P_2	 L1: 2.206 L2: 2.2 W1: 1.201 W2: 1.202 Radius: +50 Area: 2.649 S_14 P_3	 L1: 2.206 L2: 2 W1: 1.203 W2: 1.214 Radius: 1.132 Area: 2.533 S_14 P_4												
 L1: 2.201 L2: 2.206 W1: 1.201 W2: 1.201 Radius: +50 Area: 2.647 S_15 P_1	 L1: 2.201 L2: 2.206 W1: 1.201 W2: 1.201 Radius: +50 Area: 2.647 S_15 P_2	 L1: 2.202 L2: 2.206 W1: 1.201 W2: 1.201 Radius: 47.532 Area: 2.651 S_15 P_3	 L1: 2.201 L2: 2.206 W1: 1.202 W2: 1.206 Radius: 11.415 Area: 2.675 S_15 P_4												





**Спасибо за внимание)**

