

Prepared by a student of the FS-3301 group,
Dmitry Plyasunov

Belarusian language



Differences between the Belarusian language and Russian

А а	Ж ж	П п	Ч ч
Б б	З з	Р р	Ш ш
В в	І і	С с	Ы ы
Г г	Й й	Т т	Ь ь
Д д	К к	У у	Э э
Дз дз	Л л	Ў ў	Ю ю
Дж дж	М м	Ф ф	Я я
Е е	Н н	Х х	
Ё ё	О о	Ц ц	

Belarusian alphabet



Some features of the Belarusian language, part 1

- All vowel sounds are pronounced clearly and clearly;
- Accent has a noticeable effect on the change in sound. Non-percussive words are pronounced clearly, which causes a slow, melodious pace of speech. In some cases, the Belarusian word is heard not by force, but by melodic accent;
- The vowels [o], [ə] can only be stressed. If you change words, the accent is shifted, then the vowels [o], [ə] moving in [a] is called "Akanie". Accordingly, when the unstressed vowels [e], [ë] pass into [я] - this is called "yakan'e»;

Some features of the Belarusian language, part 2

- In the Belarusian language, there are sounds that are always pronounced firmly ([ж], [дж], [ш], [р], [ч]);
- Also in the Belarusian language, the letter [ŷ] is used, after vowels, the letter [y] always turns into [ŷ];
- There is such a thing as "assimilation", Before soft consonants [дз], [ц], [з], [с] are completely softened. Deviation from this rule is unacceptable, since it leads to the loss of one of the distinctive features of the Belarusian language.



Word Formations

There are the following methods of word formation:

suffixal-adding a suffix or suffix and ending to the base;

nulsuffixal — a special case of suffixation, which consists in adding a null suffix and ending to the base;

prefixed — adding a prefix to an entire word;

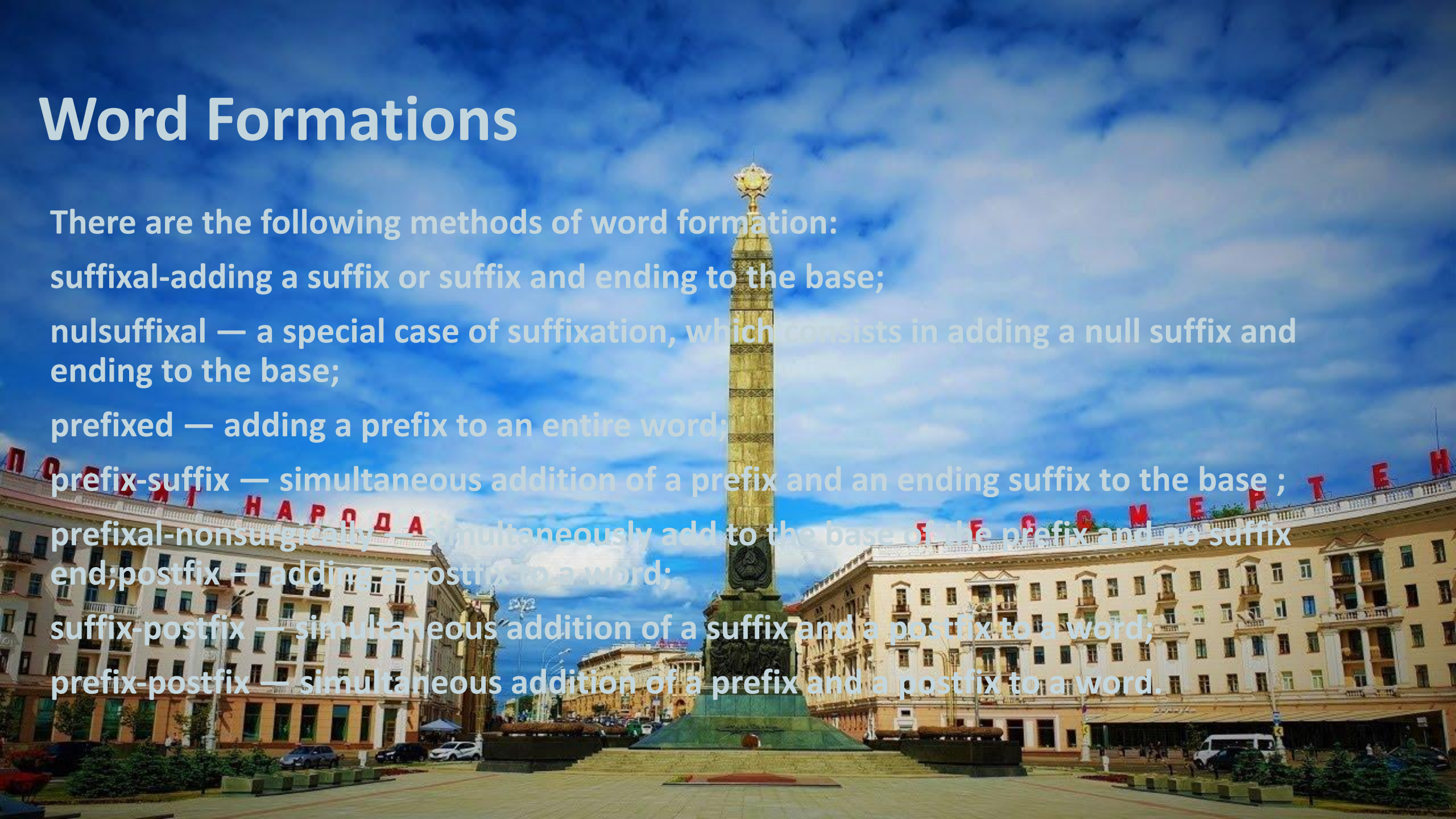
prefix-suffix — simultaneous addition of a prefix and an ending suffix to the base ;

prefixal-nonsurgically — simultaneously add to the base of the prefix and no suffix

end;postfix — adding a postfix to a word;

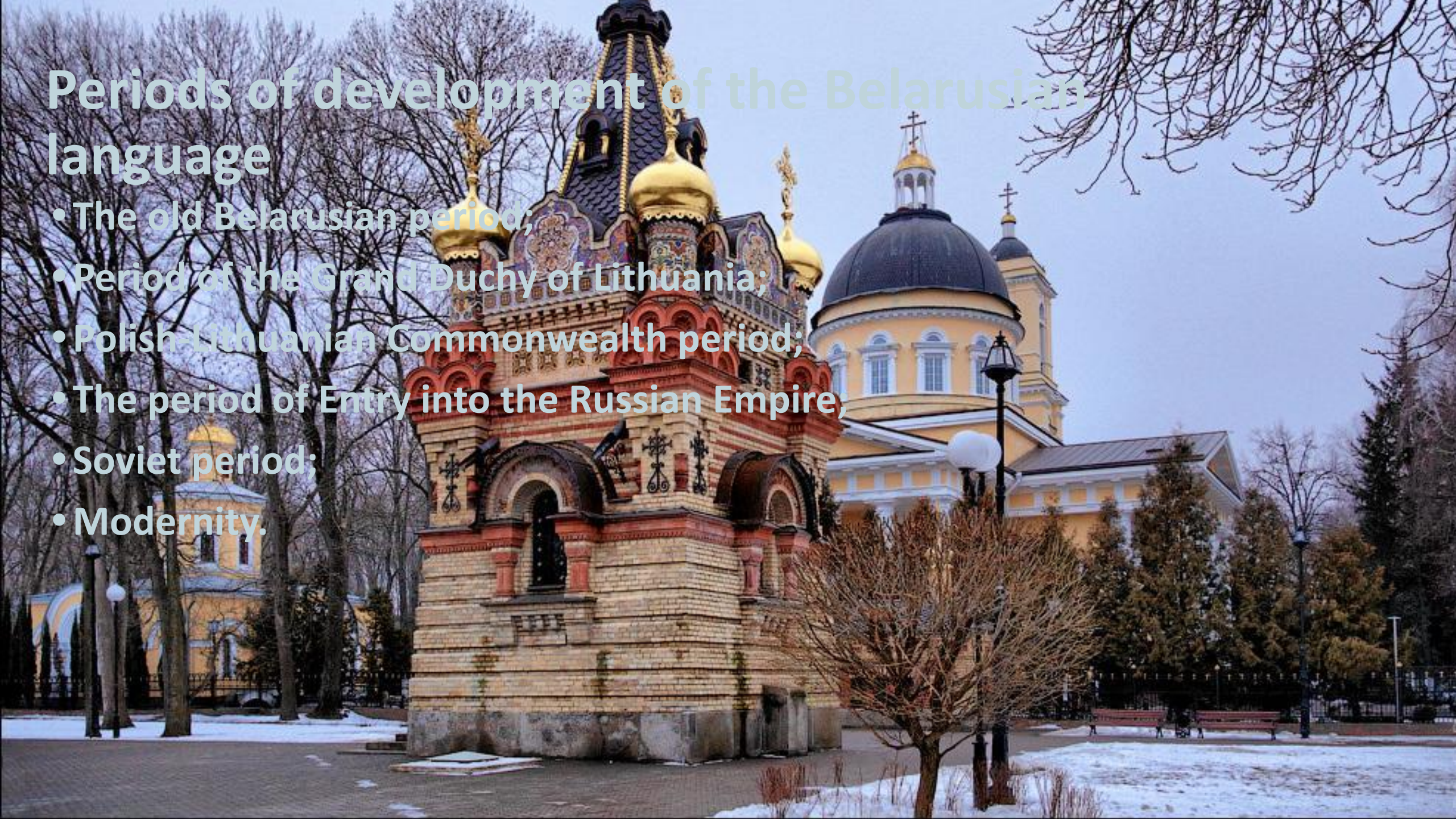
suffix-postfix — simultaneous addition of a suffix and a postfix to a word;

prefix-postfix — simultaneous addition of a prefix and a postfix to a word.



Periods of development of the Belarusian language

- The old Belarusian period;
- Period of the Grand Duchy of Lithuania;
- Polish-Lithuanian Commonwealth period;
- The period of Entry into the Russian Empire,
- Soviet period;
- Modernity.



An aerial photograph of a city, likely St. Petersburg, Russia, showing a wide river in the foreground and a dense urban area in the background. The trees are in autumn, with many leaves turned yellow and orange. A bridge is visible on the right side of the river. The text "Thanks for your attention!" is overlaid in the center in a green, sans-serif font.

Thanks for your attention!