

All About Autumn



Autumn

Autumn is one of the four seasons.



spring



summer



autumn



winter

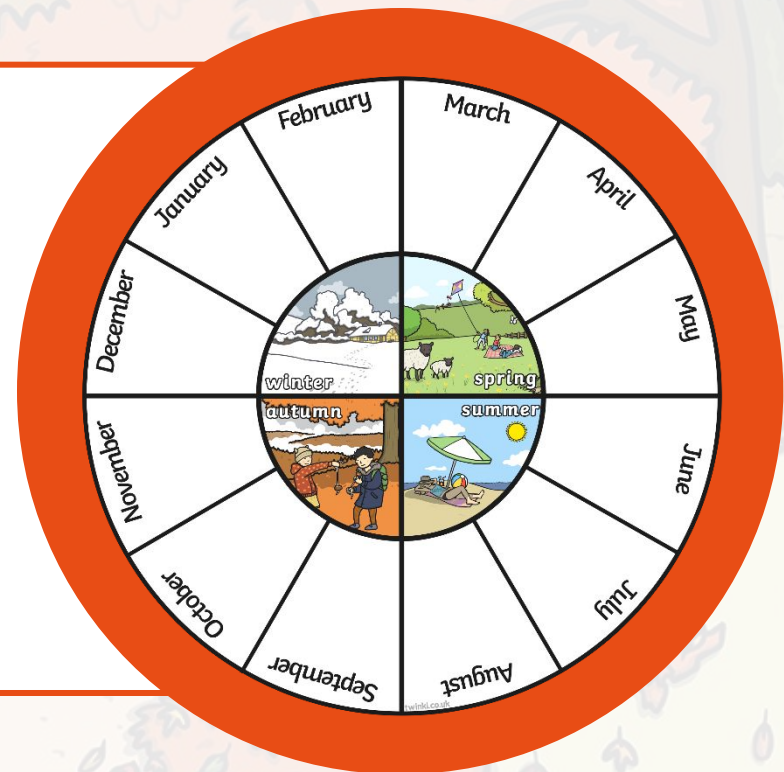


Months and Seasons

The autumn months are September, October and November.

With a partner, look at the seasons wheel.

- Can you name the autumn months?
- If the month is March, what season is it?
- If the month is August, how many months are there until winter begins?



What Does Autumn Look Like?



Autumn Weather

In the autumn, the weather is usually a bit chilly. The temperature around the UK drops, especially in the evening and at night. There is usually more rain than during the summer and it can be foggy.



Think About It

What might you wear in the autumn?

Changing Light

In the autumn, the evenings begin to get darker earlier. You might also notice that the mornings begin to get lighter later than in the summer months. It may still be dark when you wake up!

Month	Sept	Oct	Nov	Dec	Jan	Feb	Mar	April	May	June	July	Aug
Hours of sunlight	13	11	9	8	8	10	12	14	15	16	16	14



Signs of Autumn



harvest fruits
and vegetables



tractors in the fields



Halloween



conkers



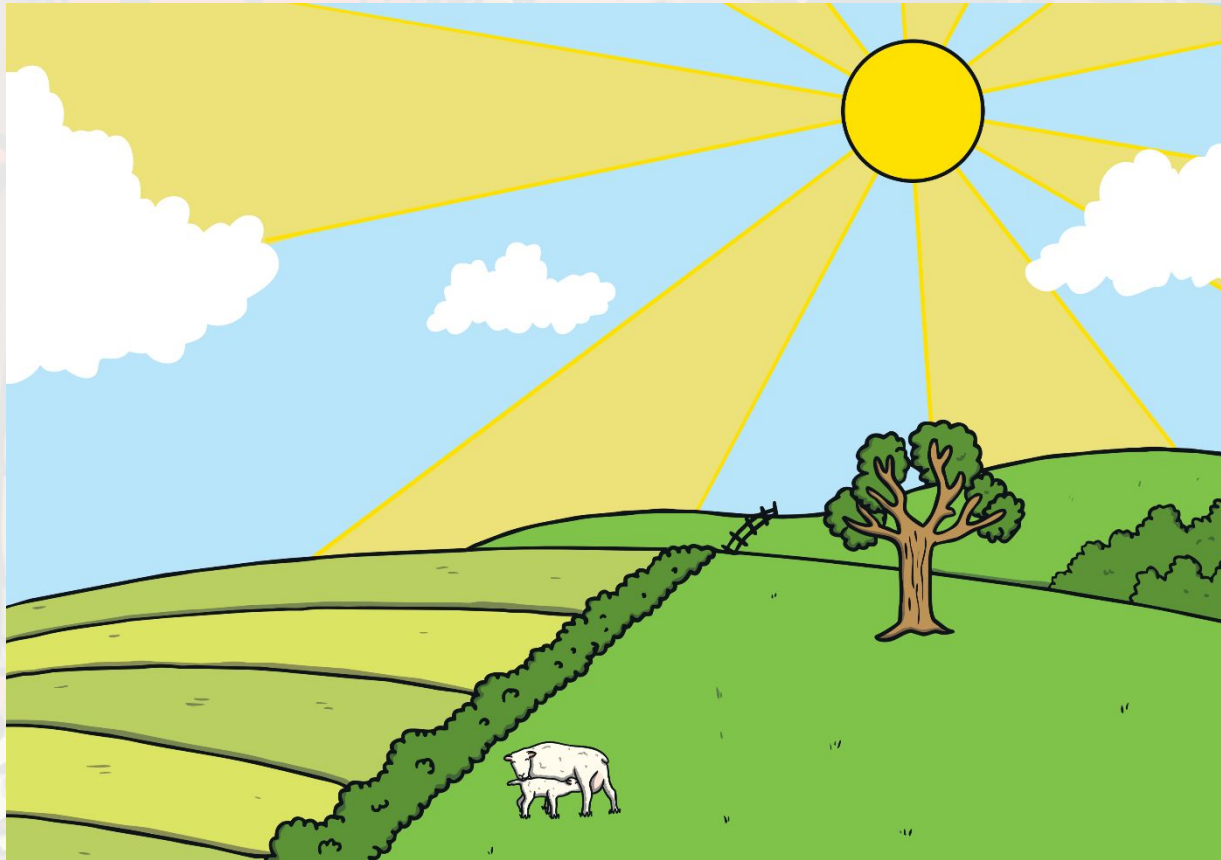
different coloured leaves



bonfires

Can you think of other things you might see in autumn?

How Is Autumn Different to Spring?



How Is Autumn Different to Winter?



How Is Autumn Different to Summer?



Some Special Days in Autumn

Halloween 31st October
All Saints' Day 1st November
Bonfire Night 5th November
Remembrance Day 11th November
St. Andrew's Day 30th November



Autumn around the World

Autumn falls in different months of the year, depending on where you are in the world. The UK (United Kingdom) is in the northern hemisphere of the earth. The bottom half is called the southern hemisphere. The two hemispheres are split by an imaginary line called the equator. The closer you are to the equator, the hotter the temperature.

northern
hemisphere

equator

southern
hemisphere



Autumn around the World

In the southern hemisphere, in countries like Australia, autumn is in March, April and May!

winter – June, July, August

spring – September, October, November

summer – December, January and February



What Have You Learnt about Autumn?

Which months are in the UK autumn?

September, October and November

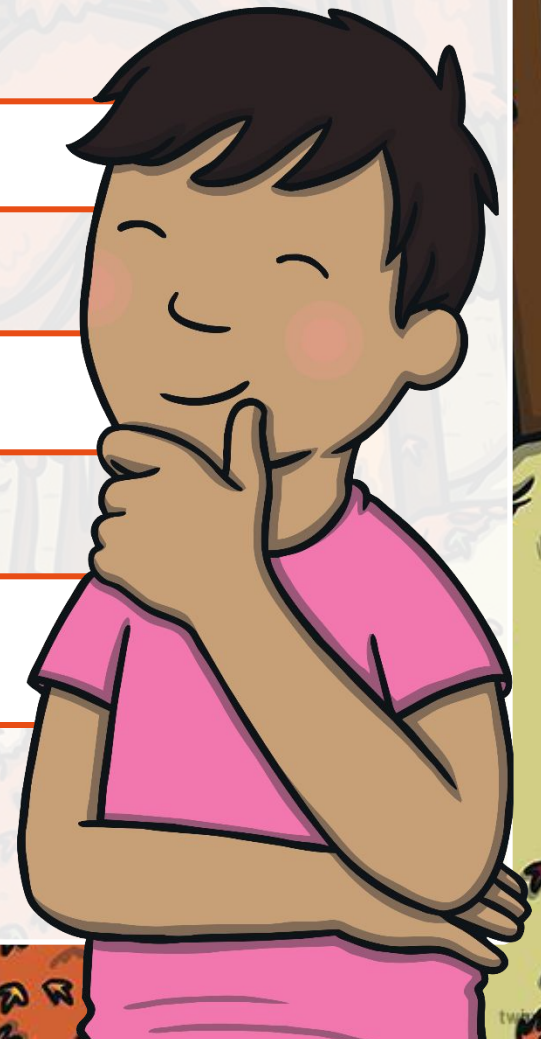
What might you wear in autumn?

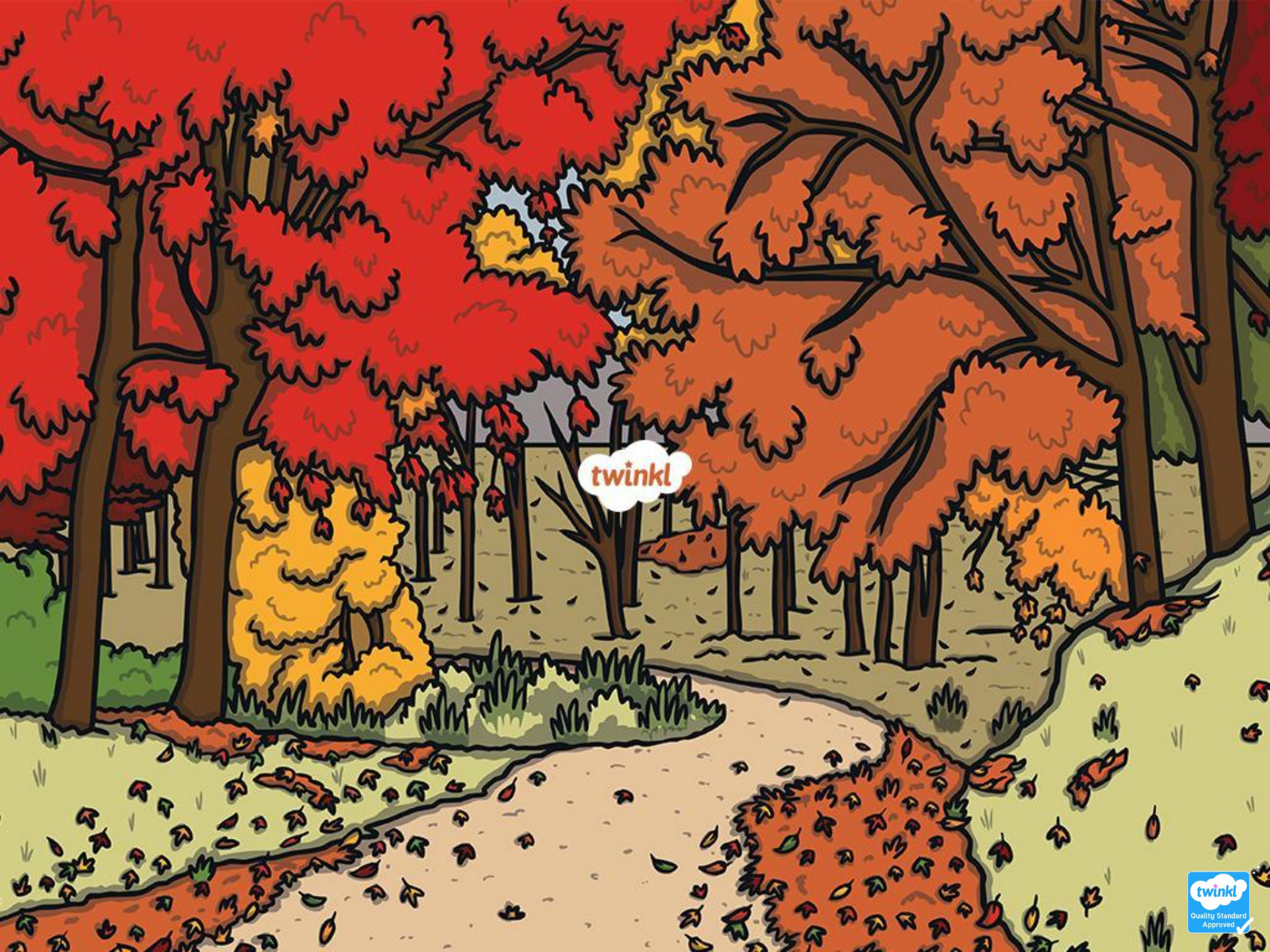
Jumpers, scarves, boots

What might you do in autumn?

Go for long walks, sit round a bonfire, play conkers and play in the fallen leaves.

Answers





twinkl