

About Us

We are Volard, a BIM design company with over 6 years of experience in the market and 250+ successfully completed projects.



volardproject@gmail.com



+380 (95) 750 83 52
+380 (96) 832 12 17



volard.com.ua

Up to **40%**

reduction of errors,
inaccuracies in project
documentation

20-50%

reduction of the time
spent on project design

6 times

less time spent on project
verification

Up to **90%**

reduction of coordination
and approval time

4 times

reduction of budget error
during planning

Up to **50%**

reduction of the time required for
the investment phase of the
project

20-50%

reduction of construction time

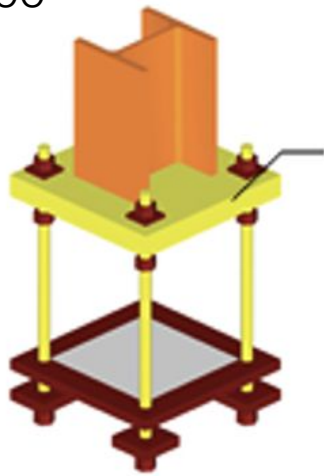
Up to **30%**

construction and operating
costs reduction



What is BIM
design for?

LOD 400



Attributes

- Length
- Width
- Height:
- Volume
- Area
- Fastener brand
- Type of installation work
- Number of fasteners
- Reference values
- Finishing materials
- Cost of materials
- Number of materials

Automatic calculation
of networks

Name	Value
Сектор	Кодированный/разделенный
PlacementID	1000010
Placement Bottom	165.53 м
Placement Top	165.70 м
File Name	1:200-80-01-ИМАС-004.rvt
File Uploaded	2020-11-05 13:30
UploadedBy	Коробейников/Виталий/Тимо
A	300 mm
A_авто	350 mm
A_лучш	300 mm
A1	255 mm
ADSK_Группирование	Решетка приточная
ADSK_Длина_определена	1.4 м
ADSK_Заказ_исполнителя	ООО "ВЕНТУМ"
ADSK_Марка	LVI
ADSK_Материал	Алюминий
ADSK_Размещение	Вентиляционная наружная
ADSK_Размещение_кранов	Решетка приточная
ADSK_Потеря_давления_воздуха	0.08 Pa
ADSK_Размер_Высота	195 mm
ADSK_Размер_Длина	50 mm
ADSK_Размер_Ширина	245 mm
ADSK_Рабочее_давление	16.8 м/Па
ADSK_Свободный_напор_воздуха	0.00 Pa
В	150 mm
В1	65 mm
В1_ИМАС	1.6
В1_КоэфПродвижения	0.4
В1_КреплениеВинтовое	Да
В1_Материал	Алюминий
В1_Мощность	0
В1_МощностьСети	0
В1_Вид	0.26
В1_СкоростьСечения	0.17
В1_СкоростьСечения_Гриб	0.17
В1_СкоростьСечения_Гриб_лучше	
В1_Разработано	
В1_СеткаЗащитная	
В1_Сетка	
В1_СкоростьСечения	
В1_СкоростьУстойчивости	
В1_Скорость	
В1_СтойкостьСети	
В1_Страна_ДатумИзда	
В1_Страна_Компьютер	

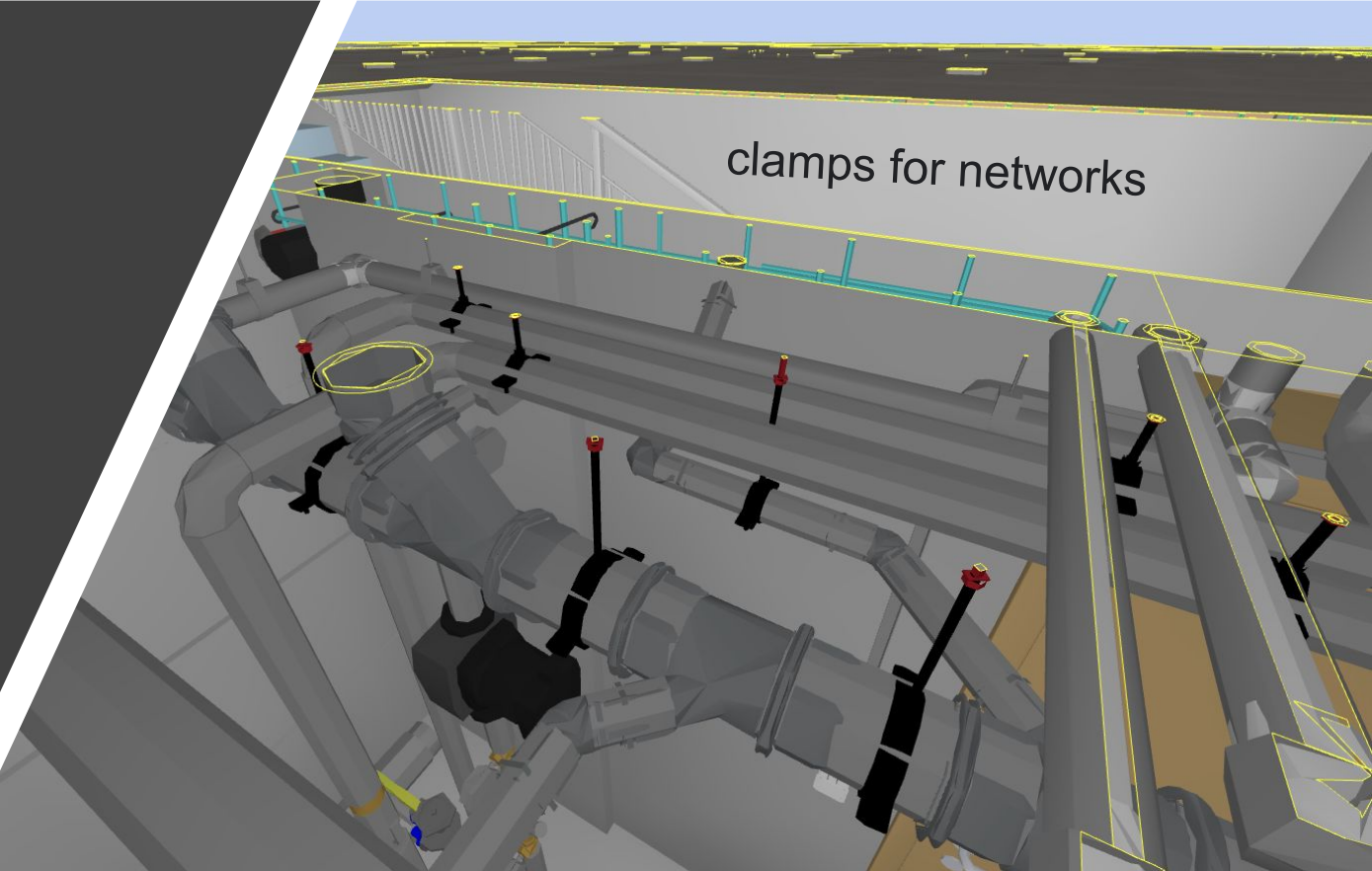
Detailing of all
elements

Requirements for BIM models for costing and budgeting

- The BIM model includes characteristics that will allow you to calculate the cost of materials as accurately as possible and minimize the number of consumables

DETAIL LEVEL - LOD 400

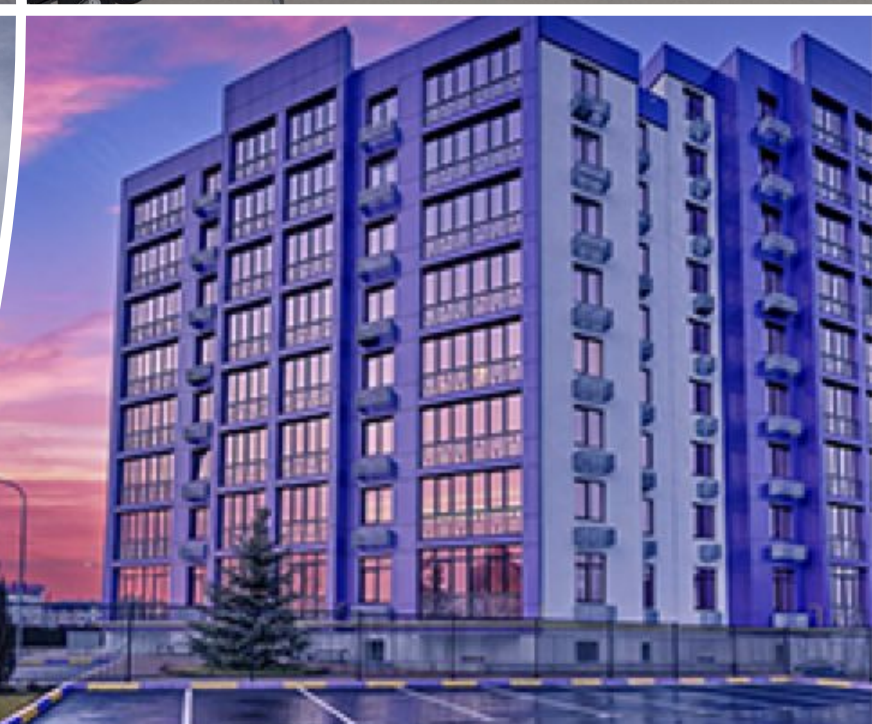
clamps for networks



6 years ago we introduced BIM to our company.

- Who is our client?
- Investors
- General Designers and General Projects
- Industrial enterprises
- Reinforced concrete structures plant

 **Volard**
volard.com.ua



What are the main goals of BIM design?



Get the maximum profit from the project



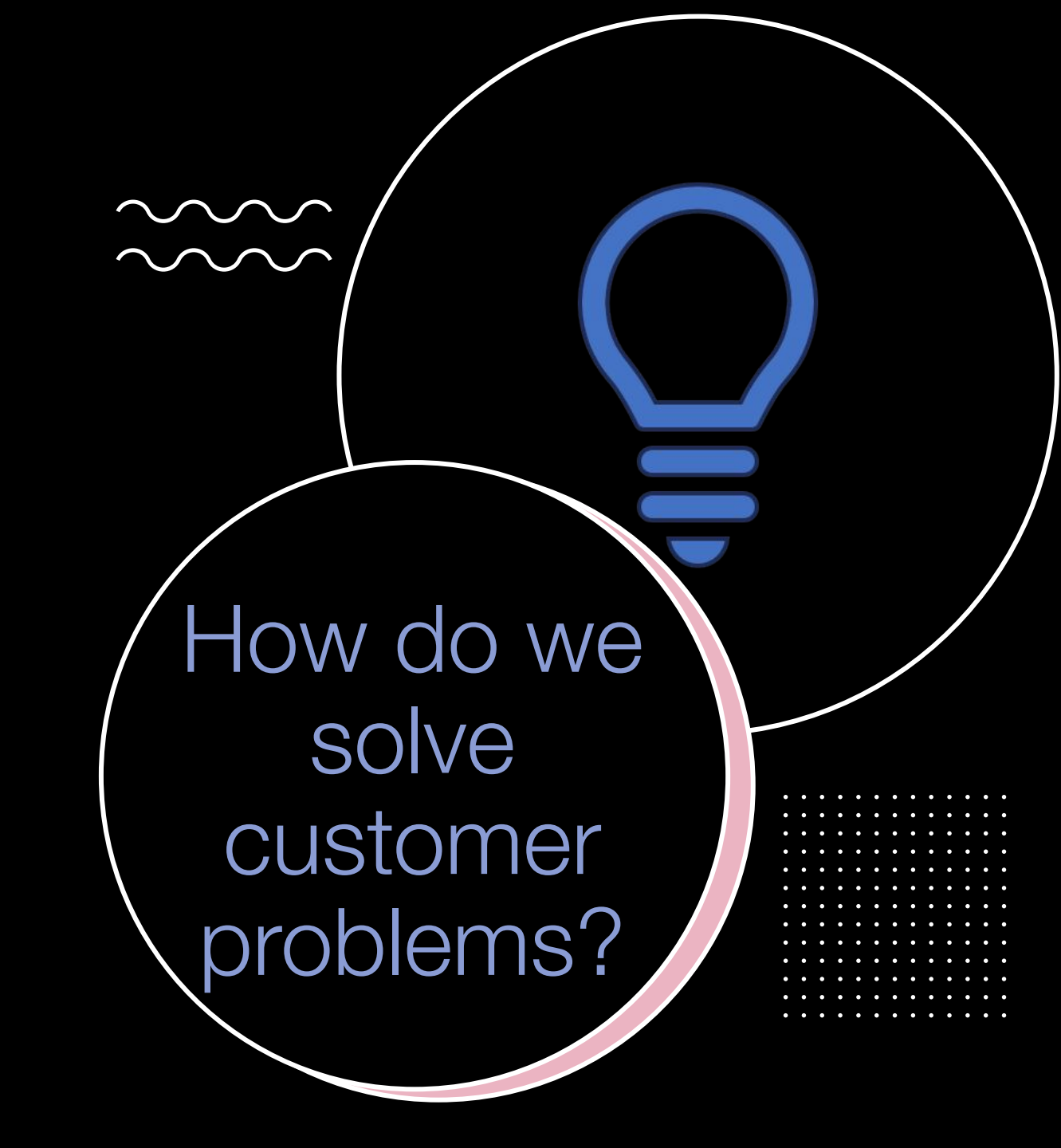
Optimization and error reduction



Reduce the construction time of buildings



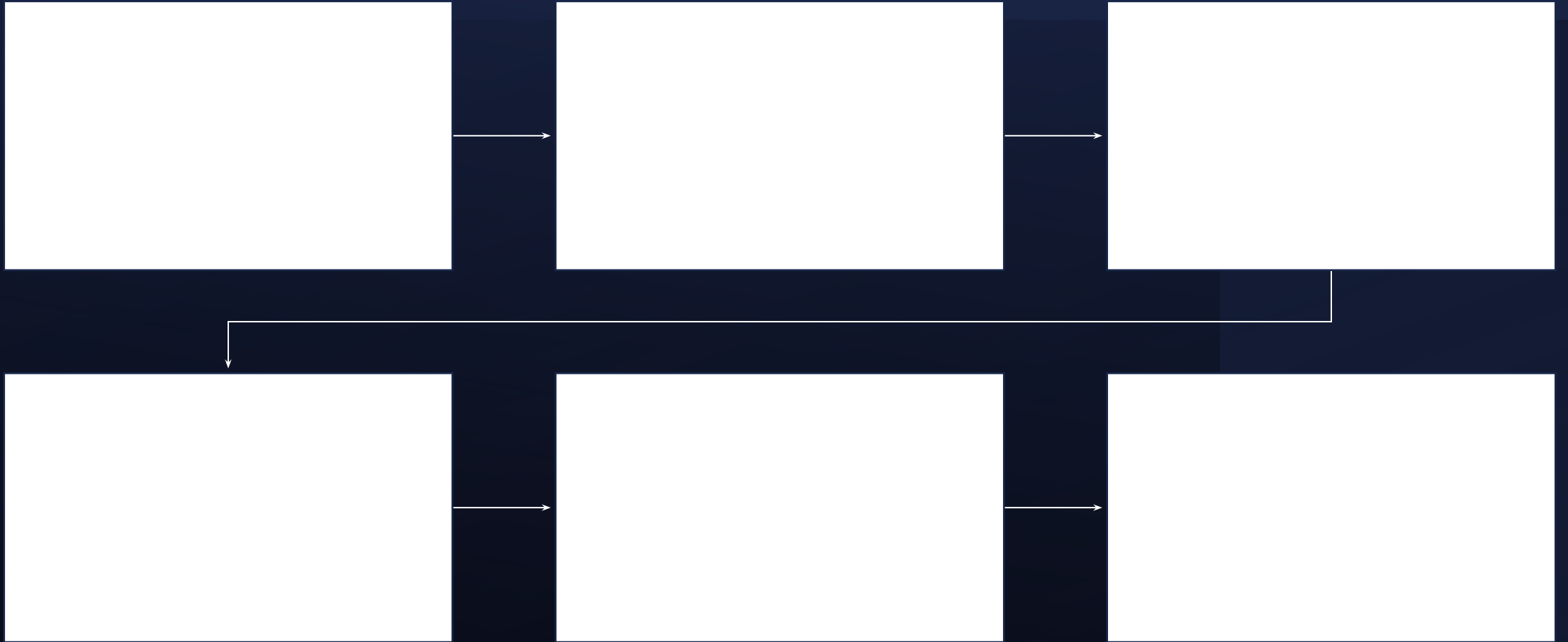
Automation and optimization of management, construction and maintenance of buildings



How do we
solve
customer
problems?

- According to the initial model, we are working with the manufacturer and the client to optimize the cost of the project.
Coordinate models in the same environment to eliminate errors between sections of the project using Revit.
Simulation of the construction process and analysis of different options for assembling the building structure.
Online communication of the model between the designers and the construction site with DALUX.

How do we work?



Result

- Bim model of detailing LOD 400 and working drawings, which will allow to calculate all materials and building elements with an error of up to 5%. Implementation of an estimate complex in a construction company using BIM.
- Setting up management between the construction site management company and the designers using BIM
Optimization of the construction process.
Technical control over the construction process using 3D models.

