

Women













GRAY PHOTO
BOSTON

ANNIE CARR













Whoopi Goldberg





































Women



Cher
Singer/Actress



Yoko Ono
Lennon/Activist



Ruth Westheimer

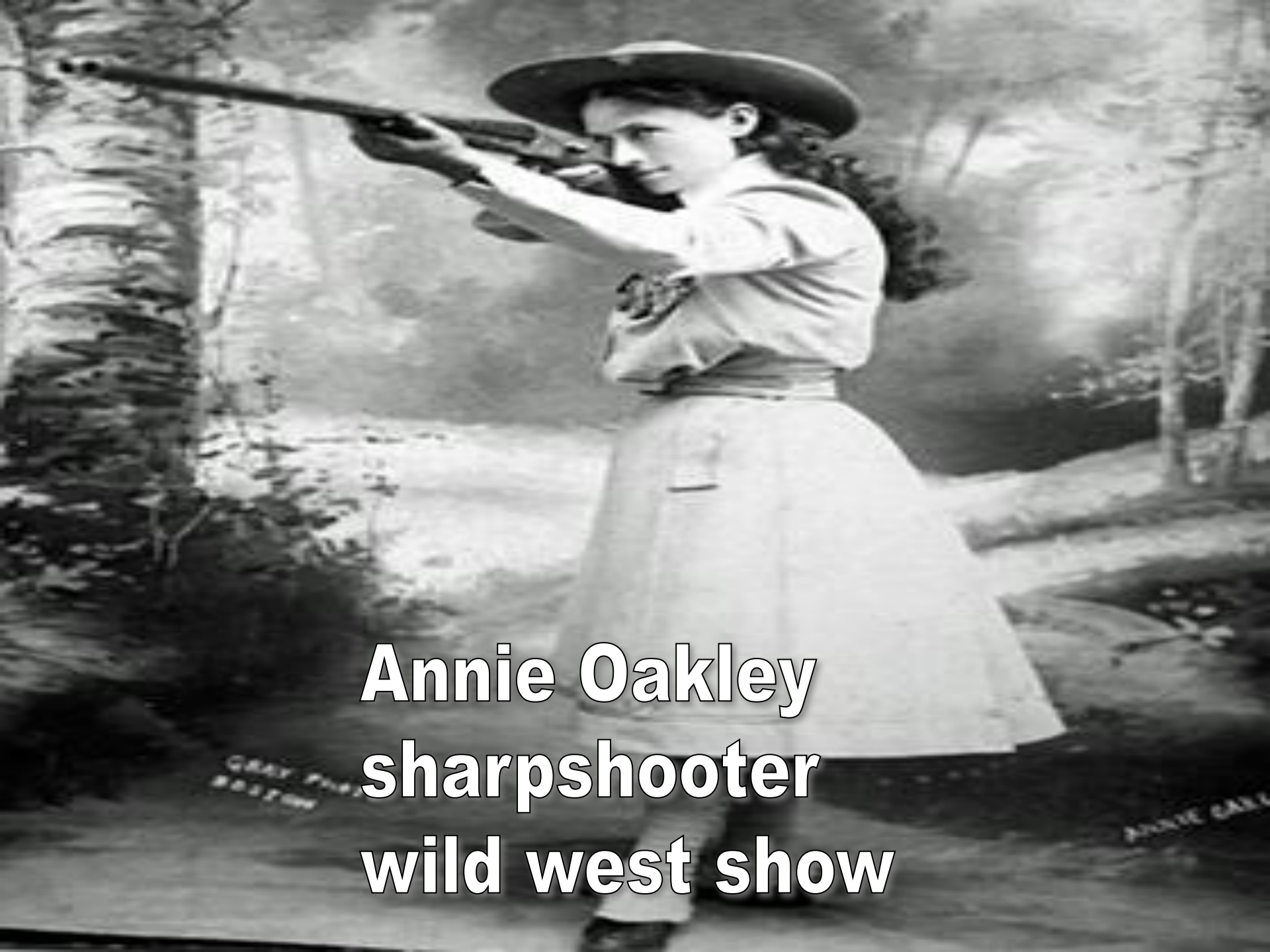
Dr. Ruth



Ophrah Winfrey
talk/actress,prod



Sally Ride
1st in space



**Annie Oakley
sharpshooter
wild west show**



Diana Ross
singer
Supremes



Amelia Earhart
transcontinental



Bessie Smith
Jazz/Blues



**Princess Diana
Aids/Landmines**



Liz Claiborne
Fashion designer



Phylicia Rashad

Actress

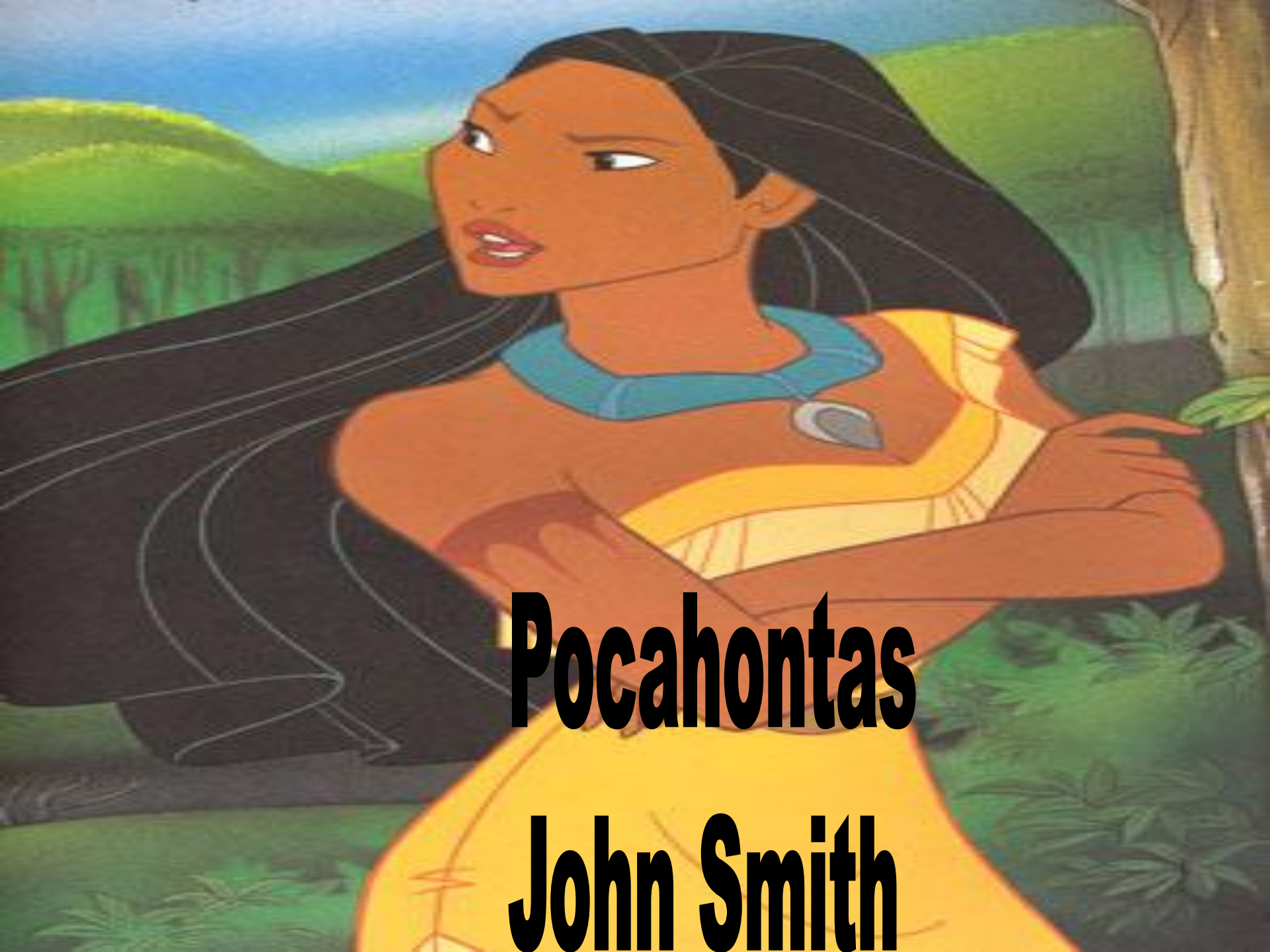
Whoopi Goldberg



**Whoopi Goldberge
actress/comedian**



Sacagawea Lewis & Clark



Pocahontas

John Smith

Betsy Ross Flag





Condoleezza Rice
Sec of State



Rosa Parks

Bus

A photograph of Sandra Day O'Connor, a former Associate Justice of the United States Supreme Court. She is shown from the chest up, wearing a black judicial robe with a prominent white lace collar. She has short, wavy white hair and is smiling warmly, looking slightly to her left. The background is a blurred interior space, likely a courtroom, with an American flag visible on the right side. The text "Sandra Day O'Connor" and "Spreme Court" is overlaid in yellow on the lower part of the image.

Sandra Day O'Connor
Spreme Court

A black and white portrait of Helen Keller. She is wearing a dark, wide-brimmed hat with a large feather and a necklace with a circular pendant. She has a slight smile and is looking directly at the camera. The background is a plain, light color.

Helen Keller



Susan B Anthony
suffrage

A black and white portrait of Harriet Tubman, an elderly African American woman with a serious expression. She is wearing a white headscarf and a white shawl. The background is dark. The text "Harriet Tubman" and "Underground RR" is overlaid on the bottom left of the image.

Harriet Tubman
Underground RR



**Wilma Rudolph
1960 Olympics**



Kathy Ireland
Model

A black and white close-up portrait of Raquel Welch. She has long, voluminous, wavy hair that frames her face. Her eyes are looking slightly to the right, and her expression is neutral. The lighting is soft, highlighting the texture of her hair and her features.

Raquel Welch
actress/model



Christie Brinkley
Model/actress



Minnie Pearl
comedian



Tina Turner
singer

A photograph of Zsa Zsa Gabor, a famous Hungarian-born American actress and socialite. She is shown from the chest up, wearing a vibrant, textured pink fur coat. Her hair is styled in a classic, voluminous blonde bouffant. She is smiling slightly and looking towards the camera. To her right, a large, fluffy pink dog, possibly a Poodle, is partially visible, also wearing a pink accessory. The background is a plain, light-colored wall.

Zsa Zsa Gabor
actress



Clara Barton
Red Cross

