The background of the image is an underwater scene. The top half shows the surface of the water with ripples and light reflections. The bottom half shows a sandy or silty seabed with a bright light source, likely the sun, filtering through the water, creating a shimmering effect. The overall color palette is dominated by blues and greens in the upper portion, transitioning to yellows and browns in the lower portion.

И СНОВА О ВОДЕ



H

O

H





ОБЛАДАЕТ ПАМЯТЬЮ **ТЯЖЕЛА**
Я

ЖИВАЯ **ИМЕЕТ СТРУКТУРУ**

ОБЛАДАЕТ ЭНЕРГЕТИКОЙ

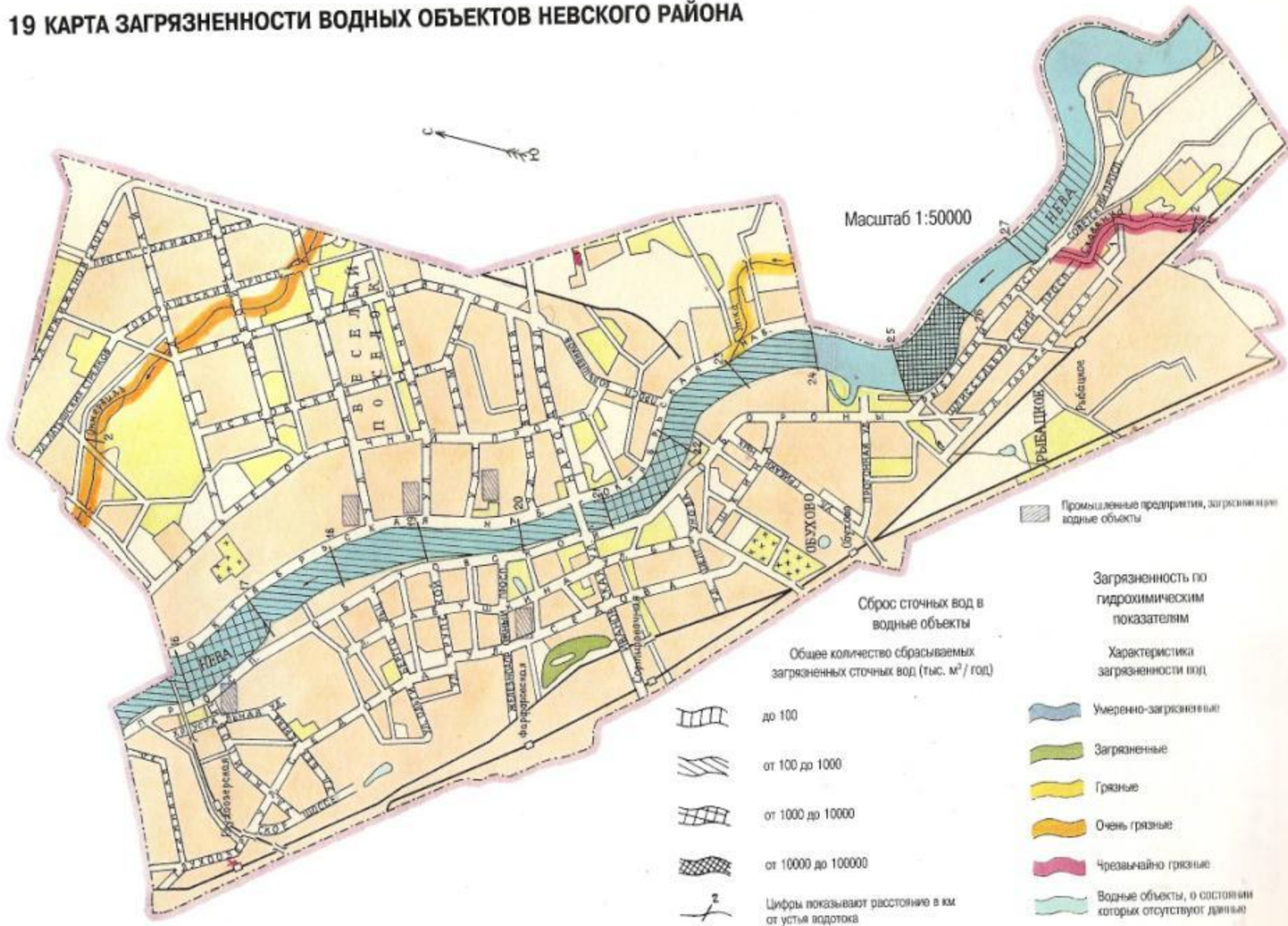
МЕРТВА
Я

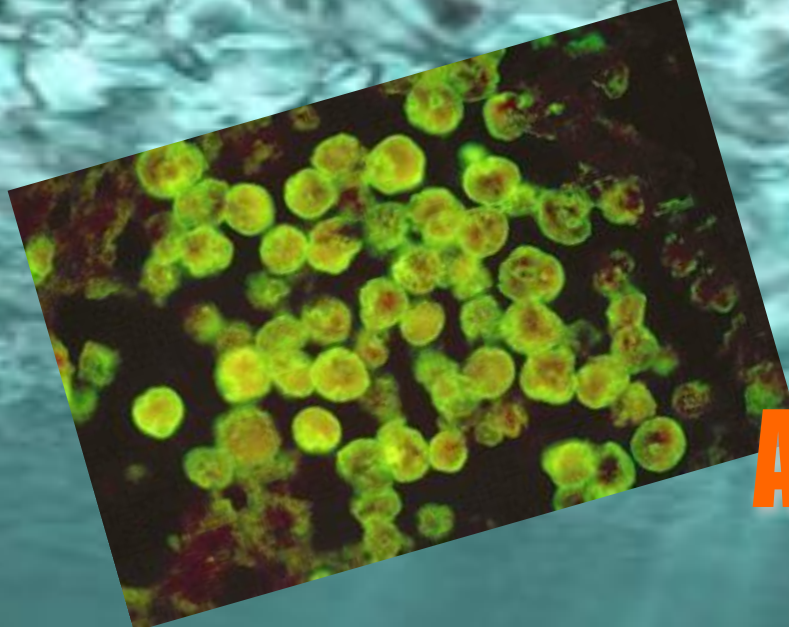
ПОЛИМЕРНАЯ **СЛЫШИТ**
МУЗЫКУ



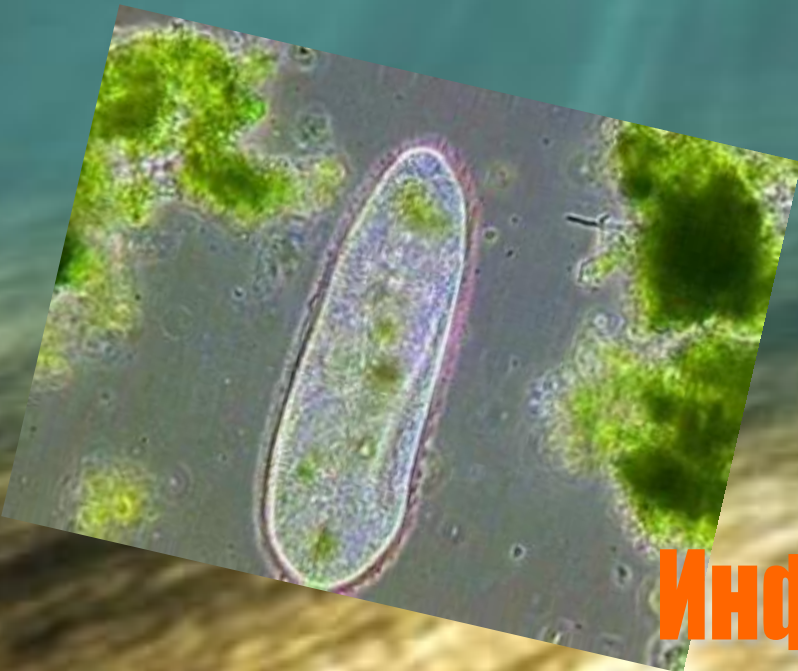
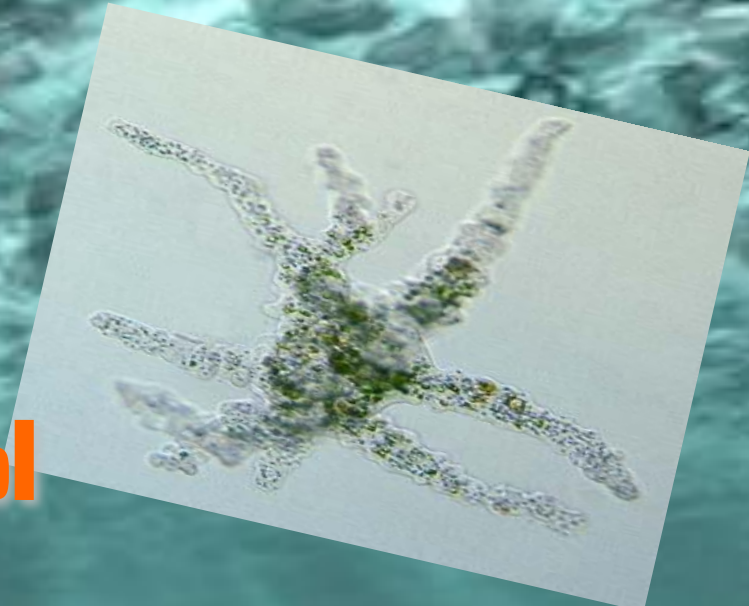


19 КАРТА ЗАГРЯЗНЕННОСТИ ВОДНЫХ ОБЪЕКТОВ НЕВСКОГО РАЙОНА

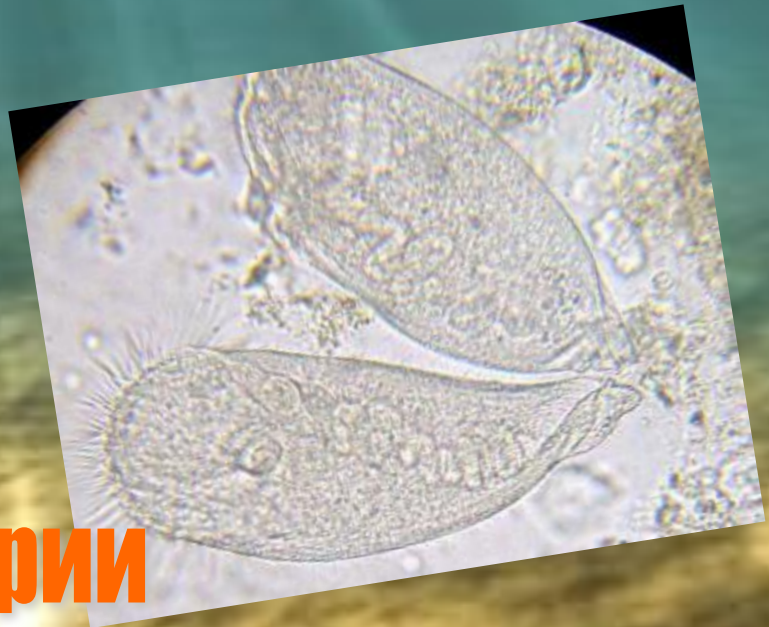


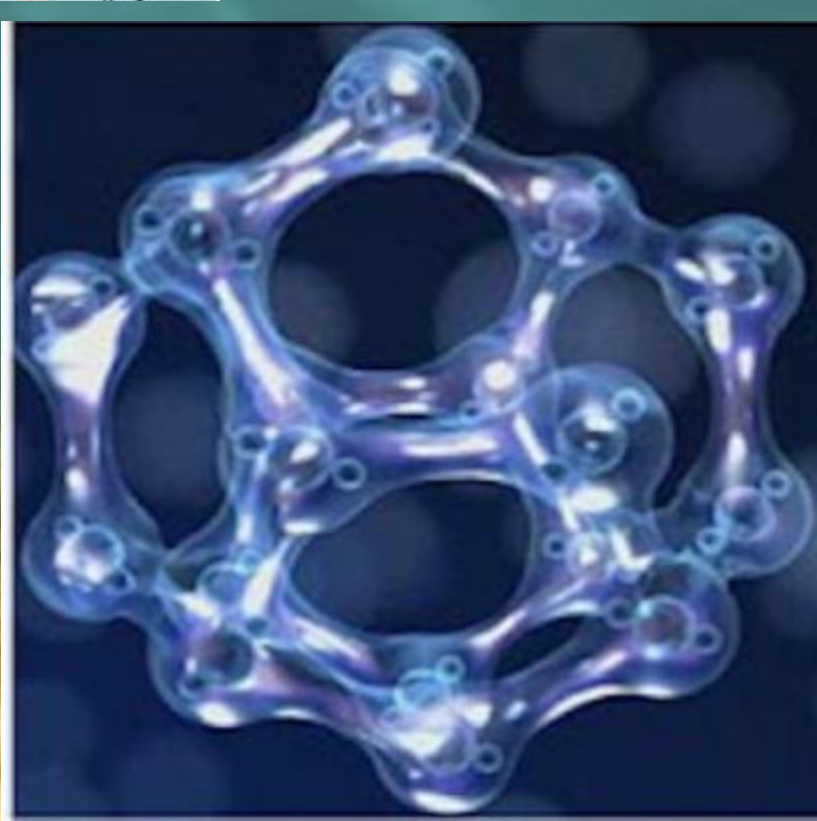
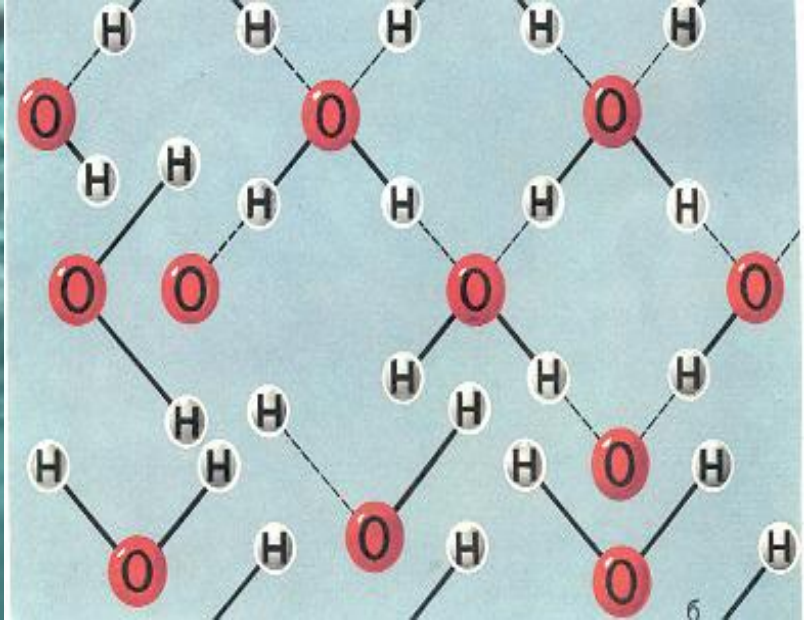


Амёбы



Инфузории





107,8

Ag

47

Argentum



Гималаи





озеро Манасаровар





озеро Ракшас

WWW.TIBET.RU









Живая

X=3



X=3

Мертвая

X>20







the Zodiac

art by KAGAYA

© 2011 KAGAYA / © 2011 BETHINKERS / CD-ROM 51-008