



**World's best & most
accurate
sheet counter**



OpSigal, the world's fastest & most accurate sheet counter started at OpGal Optronics, a world leader in military imaging technologies, and pioneer of the un-cooled cameras.

While prohibited from sharing much about OpGal, think Mission Impossible, and add some..



Irrefutable Accuracy.

The issue in dollars and cents





Irrefutable Accuracy.

Real & 'Soft' Costs:

Short Count Credits, 'Ghost Waste', Freebies shipped, Time handling claims.

	Counting Audit			10/08/12		North Corrugator			
	Inch Count	Hand / Opsigal	Hand / Customer	Knife count	Flute	Stack ID	Difference	-	+
1		590	590	590		733700	0		
2		287	288	290		734950	2	2	
3	219	214	214			734950	5	5	
4	225	222	222			734950	3	3	
5	719	700	700			735838	19	19	
6	1160	1160	1160			735221	0		
7	290	289	289			735816	1	1	
8	810	867	867			735795	57		57
9	585	634	634			735673	49		49
10	125	127	127			735818	2		2
11	503	496	496			735420	7	7	
12		287	287	290		736051	3	3	
13	580	572	572			734615	8	8	
14		592	592	594		734615	2	2	
15		580	580	580		735228	0		
16		576	576	580		735228	4	4	
17		580	580	580		735228	0		
18	483	482	482			735228	1	1	
19		578	578	580		735228	2	2	
20		578	578	580		735228	2	2	
21	395	394	394			735228	1	1	
						Total	168	60	108
				First Day		Out of 21 stacks			
	By Ronen of Opsigal and Miguel					2.28 sheets per stack extra sent	(108 - 60 = 48)		

168 sheets uncovered within random 21 stacks audit.

Assuming the same customer receives both shorts and extras, it's 2.28 sheets extra per stack.

500 stacks per shift x 3 = **3,420** free sheets a day.

With average US sheet price of \$0.45 x 5 days, your missing 3,420 daily sheets are worth **\$30,780** a month.

+ pesky short count credits



How it works

2 seconds, that's all it takes for OpSigal's NoMiss collects, process and verify a high resolution image of an entire stack, turning the image acquired into data.

The technology prevails even with warped edges, unevenly built stacks, dim lights, changing light conditions & dusty conditions.



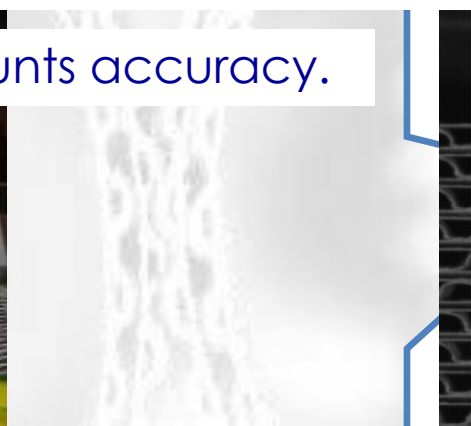
How it works



Individual sheets in the stack is
our management system,
updating records of shipping, billing, production and quality
with the correct count.

Kiwiplan

Spaces do not effect counts accuracy.



PixVault



PixVault saves the last 300,000 counts, complete with customer, order information, time stamp, and an HD photo.

Irrefutable Accuracy.

Yup, you can share it with your customers.

DoubleCheck

Its like seeing through walls!

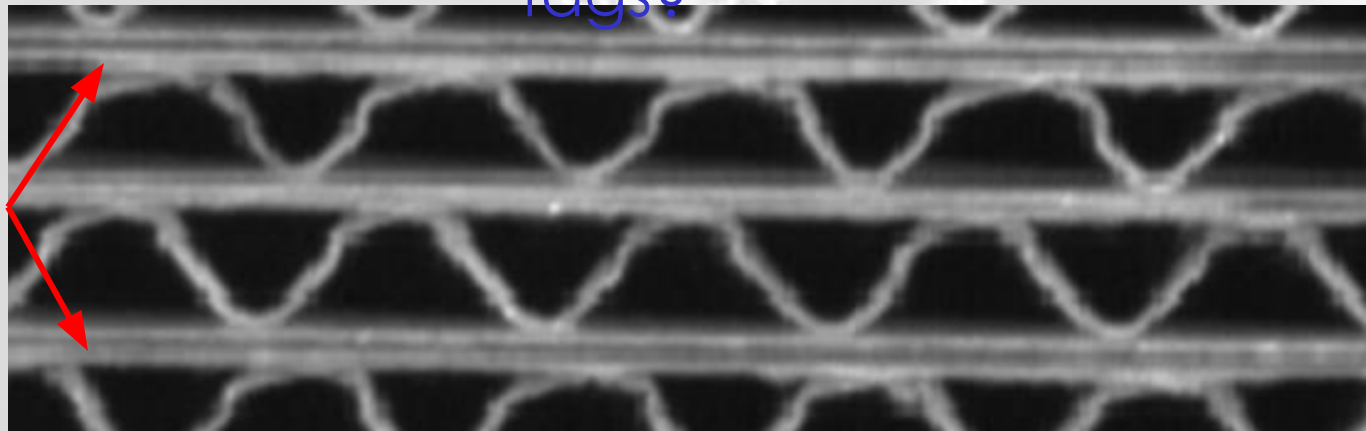
Computing individual sheet thickness, caliper, and total stack height, DoubleCheck ensure accuracy even when sheets are hidden.

TrueCaliper

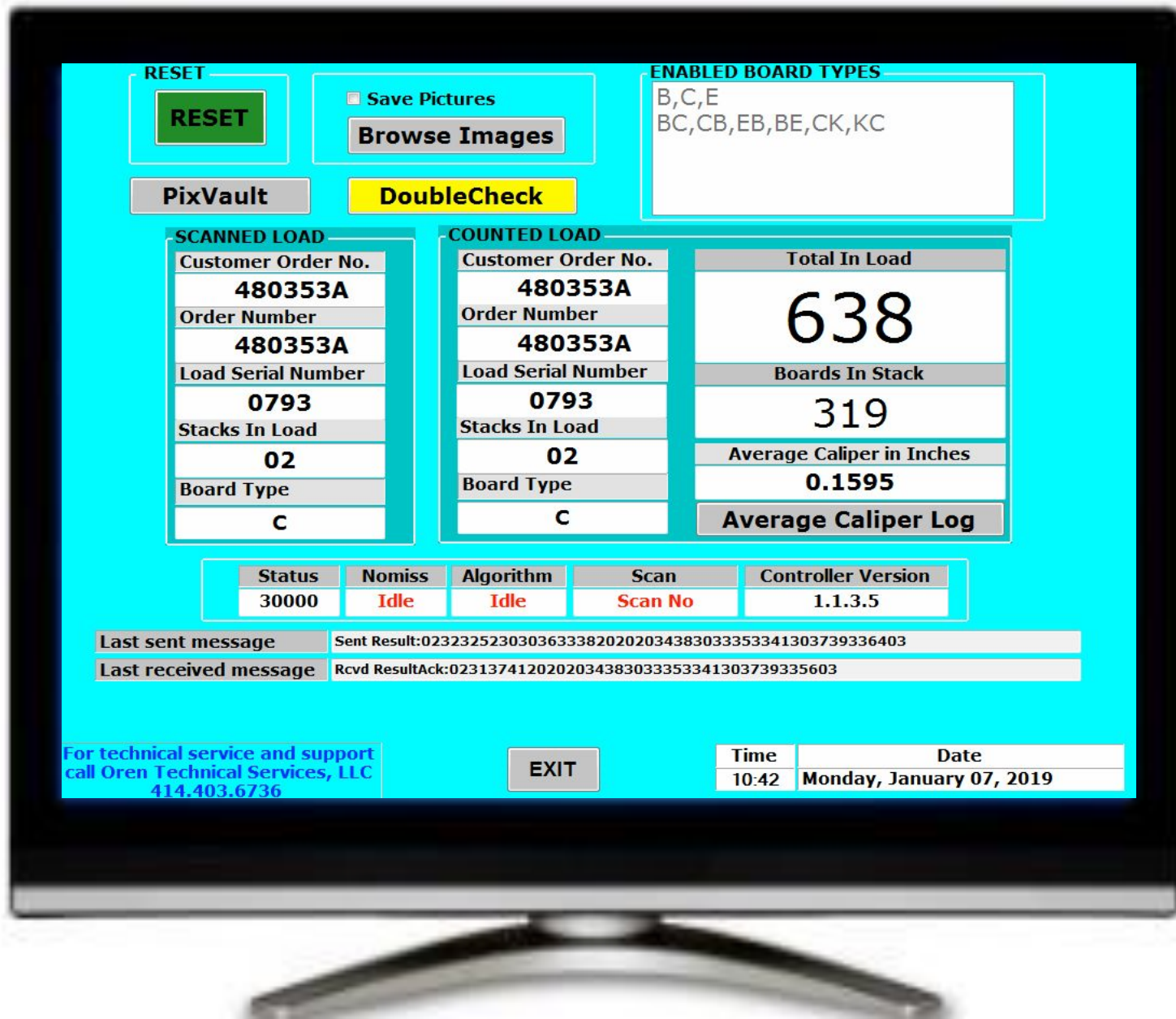
File	Edit	Format	View	Help		
Num	Batch in Day	Order Number	Load Serial Number	Average Caliper	Date	Time

479	594	Order	1		2013	12:42 PM
480	595	Order	1	0.17692356745402	2013	12:43 PM
481	596	Order	1	0.17754056020543	/2013	12:43 PM
482	597	Order	1234	0.178312899271647	5/8/2013	12:44 PM
483	598	Order	1234	0.177207400004069	5/8/2013	12:44 PM
484	599	Order	1234	0.177490037282308	5/8/2013	12:44 PM
485	600	Order	1234	0.176847292582194	5/8/2013	12:45 PM
486	601	Order	1234	0.176590633392334	5/8/2013	12:45 PM
487	602	Order	1234	0.176912231445313	5/8/2013	12:46 PM
488	603	Order	1234	0.176172046661377	5/8/2013	12:46 PM


Will you or your customers want precise caliper on load tags?



Access the information real time from your office computer



Or



RESET

RESET

☐ Save Pictures

Browse Images

ENABLED BOARD TYPES

B,C,E
BC,CB,EB,BE,CK,KC

PixVault

DoubleCheck

SCANNED LOAD

Customer Order No.	480353A
Order Number	480353A
Load Serial Number	0793
Stacks In Load	02
Board Type	C

COUNTED LOAD

Customer Order No.	480353A
Order Number	480353A
Load Serial Number	0793
Stacks In Load	02
Board Type	C

Total In Load

638

Boards In Stack

319

Average Caliper in Inches

0.1595

Average Caliper Log

Status	Nomiss	Algorithm	Scan	Controller Version
30000	Idle	Idle	Scan No	1.1.3.5

Last sent message Sent Result:02323252303036333820202034383033353341303739336403

Last received message Rcvd ResultAck:0231374120202034383033353341303739335603

For technical service and support
call Oren Technical Services, LLC
414.403.6736

EXIT

Time 10:42 **Date** Monday, January 07, 2019

Or

RESET

RESET

☐ Save Pictures

Browse Images

ENABLED BOARD TYPES
B,C,E
BC,CB,EB,BE,CK,KC

PixVault

DoubleClick

SCANNED LOAD

Customer Order No.	480353A
Order Number	480353A
Load Serial Number	0793
Stacks In Load	02
Board Type	C

COUNTED LOAD

Customer Order No.	480353A
Order Number	480353A
Load Serial Number	0793
Stacks In Load	02
Board Type	C

Total In Load	638
Boards In Stack	319
Average Caliper in Inches	0.1595
Average Caliper Log	

Status	Nomiss	Algorithm	Scan	Controller Version
30000	Idle	Idle	Scan No	1.1.3.5

Last sent message

Sent Result:02323252303036333820202034383033353341303739336403

Last received message

Rcvd ResultAck:0231374120202034383033353341303739335603

For technical service and support
call Oren Technical Services, LLC
414.403.6736

EXIT

Time	Date
10:42	Monday, January 07, 2019

Summary

- 2 seconds fast.
- Fully automated.
- Remote access.
- Smart Phone app.
- Automatic Caliper.
- Guaranteed accuracy.
- Counts each individual sheet.
- Keeps 300,000 count records + pictures.
- Interface with your management system.

It is the world's fastest & most accurate sheet counter.



The 2017 OpSignal GT



www.opsignal.com