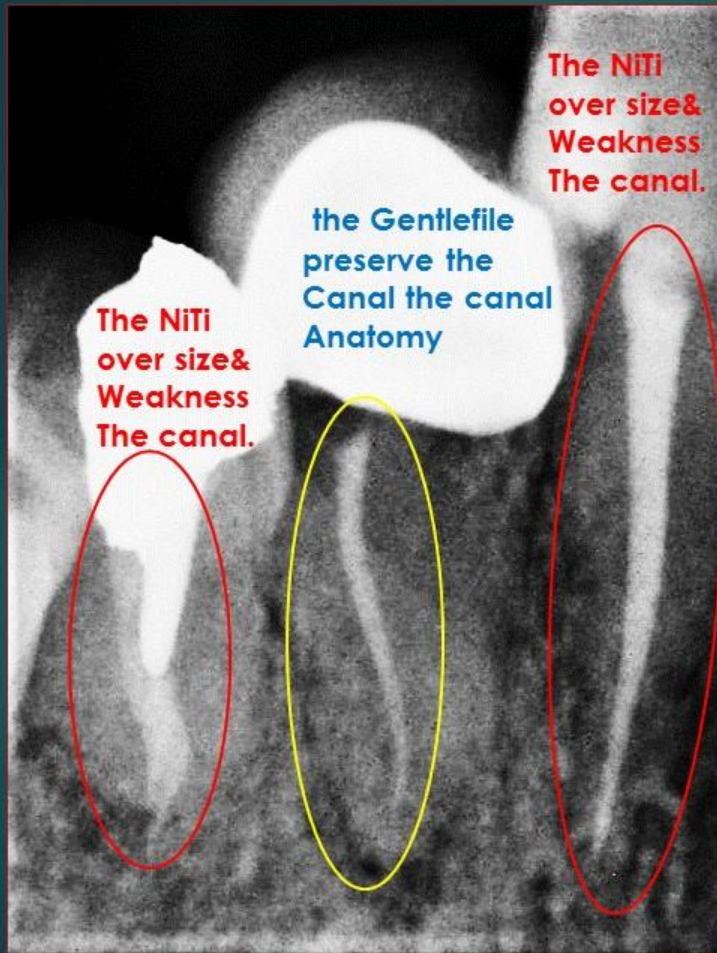


## Preserve the canal anatomy



### The purpose of this clinical evaluation :

show that the Gentlefile system follow

The neutral shape of the canal

And Preserve the canal anatomy.

Therefore keep the strength of the canal wall,

Extend the tooth life

better hold the post

Keep the symmetric canal axis

Avoid ledge and perforation

The attached case accidently show-3 different canal with the same patient but the last tooth performed by Gentlefile

## Preserve the canal anatomy

Gentlefile - **gray**: initial start – 1x per canal

.Gentlefile - **red**: for the remaining procedure

Used in the all 4 canals

Obturation: Gutta percha 25 x 0.4 (all 4 canals) **Taper: 0.3-0.4**



## Preserve the canal anatomy

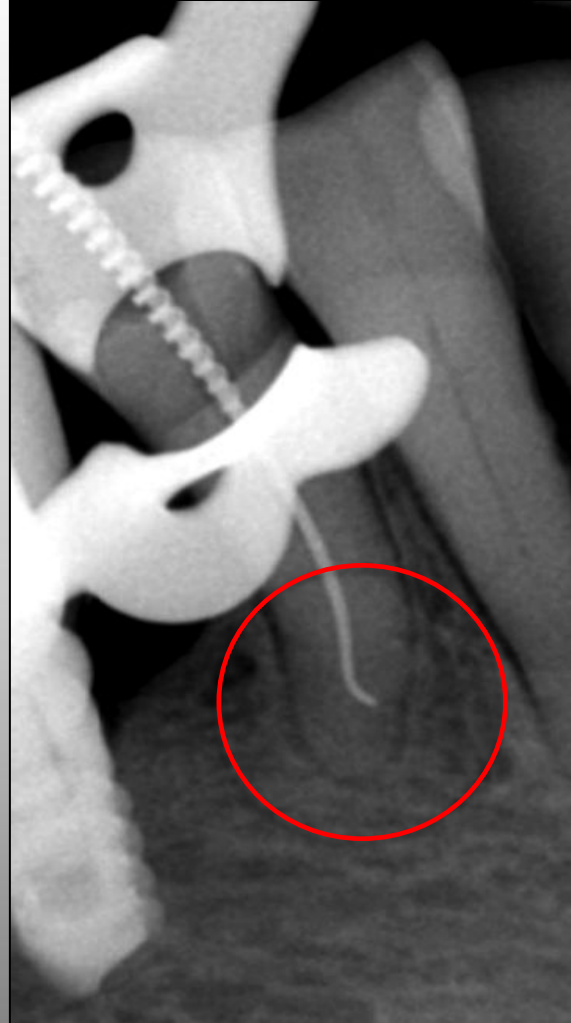
K-0.10 > Mgf-0.17 > gray > red > brush > red



Nachum J Stone DDS Ma



# Preserve the canal anatomy





Gentlefile<sup>®</sup>

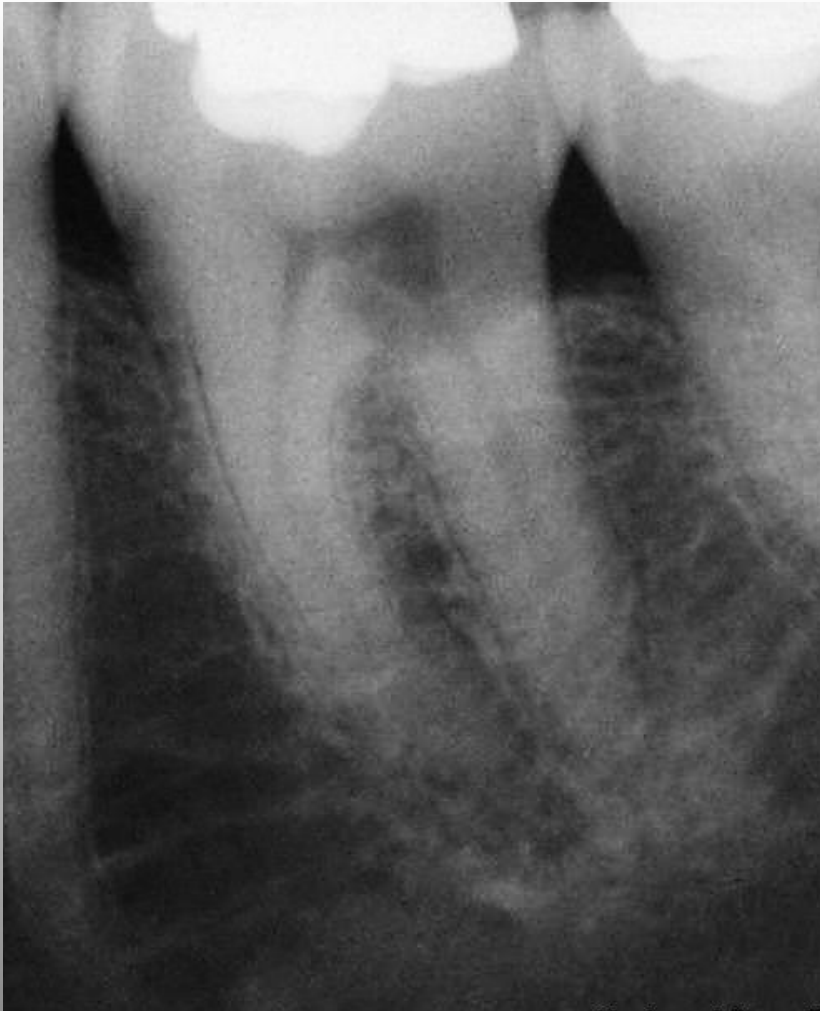
by MedicNRG

Preserve the canal anatomy

K0.10 > Mgf 0.17 > gray > blue > red > brush. 10.2016 dr. stone











Gentlefile<sup>®</sup>

by MedicNRG

Preserve the canal anatomy



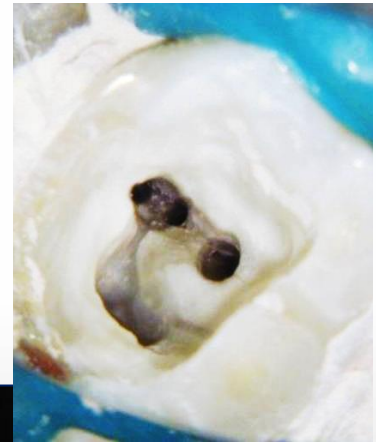


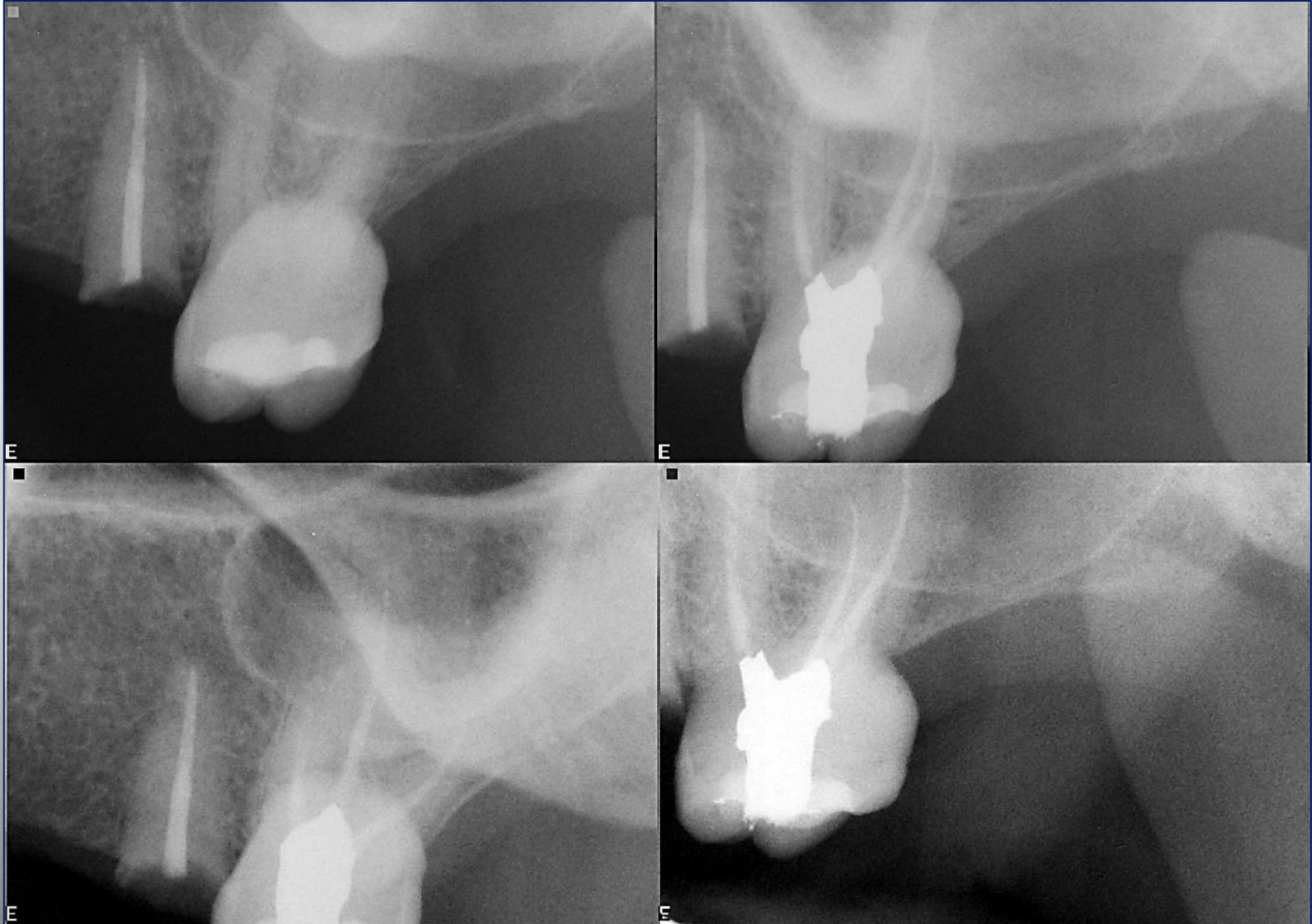


Gentlefile<sup>®</sup>

by MedicNRG

Preserve the canal anatomy







Gentlefile<sup>®</sup>  
by MedicNRG

Preserve the canal anatomy

**S-shape**



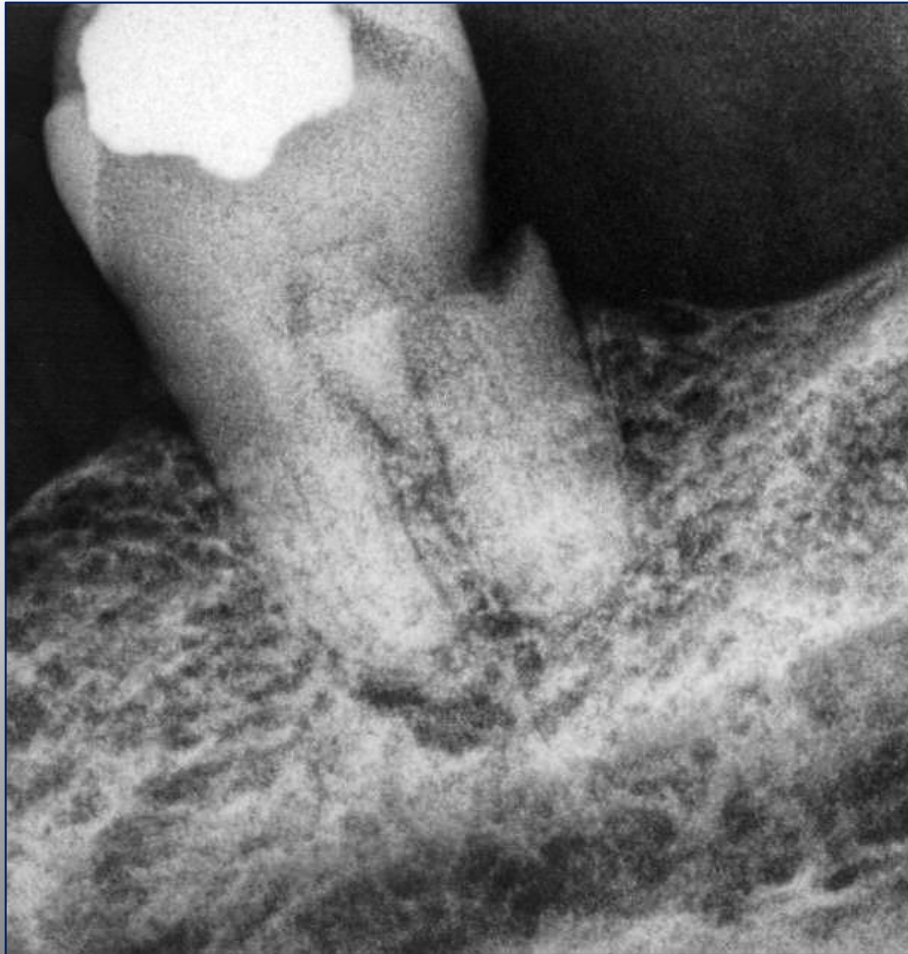




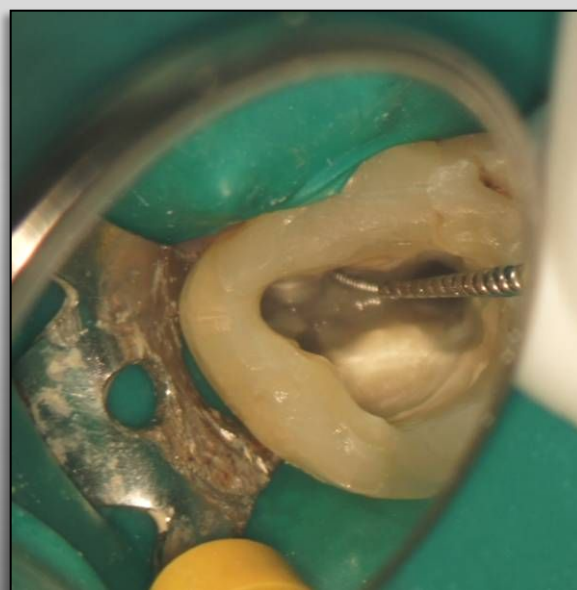
**: Preserve the canal anatomy by using**  
<k-file 010 > abrasive manual GF 017  
GF Gray > Red > GF Brush  
By Dr Stone – 3.2016













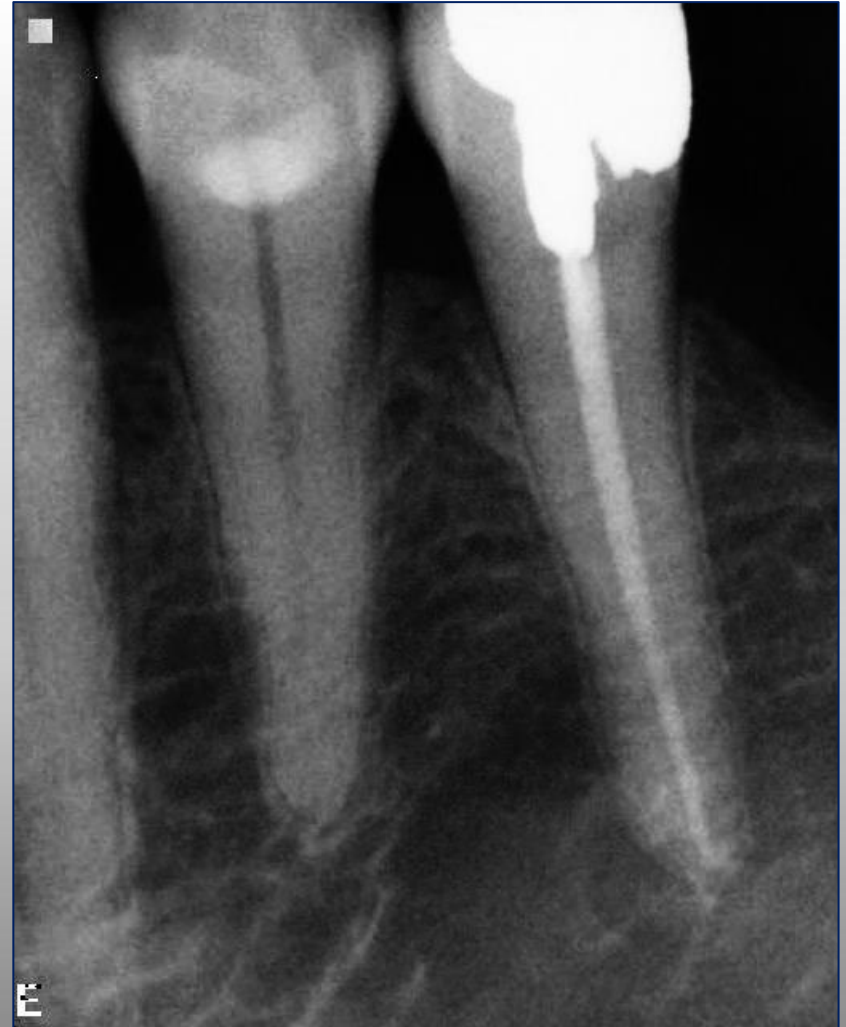


Gentlefile<sup>®</sup>

by MedicNRG

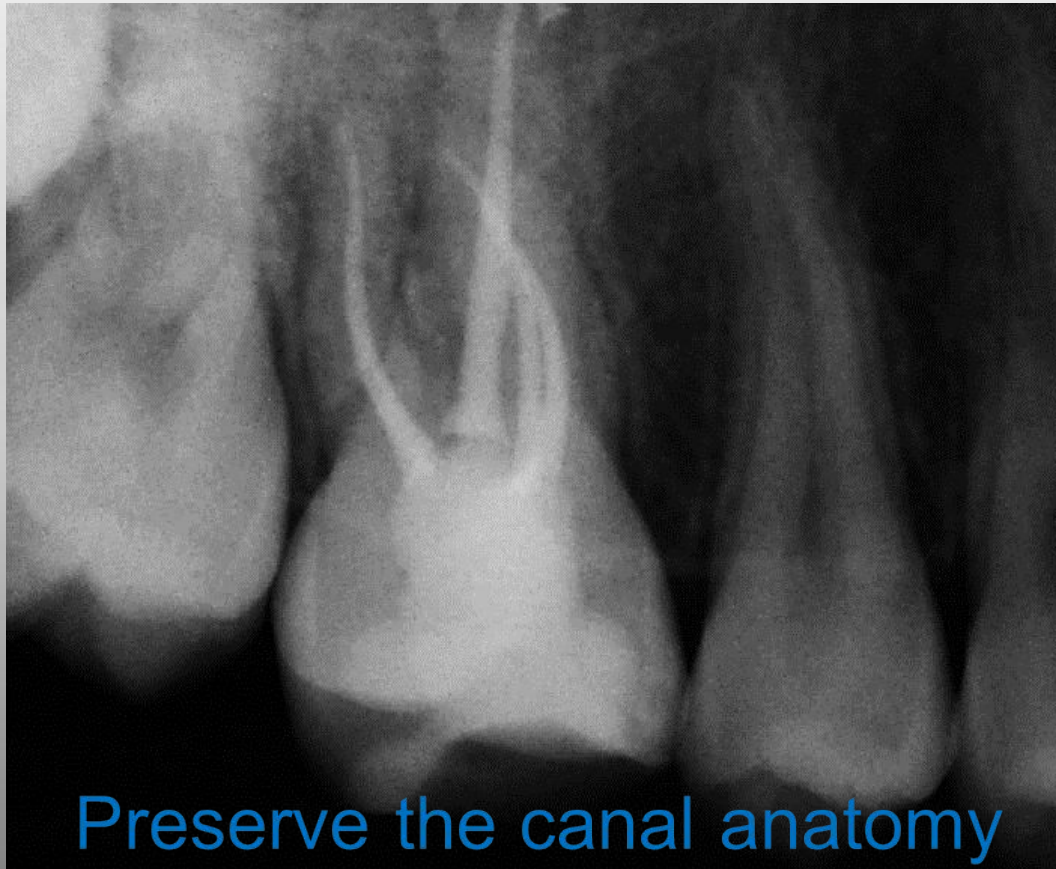
Preserve the canal anatomy

**One GF file case:** K-0.10 > Red and fibished by GF brush . Less than 2.min



 Gentlefile®  
by MedicNRG

young pt- easy canals  
15>red>brush>red>brush> Guttaflow 2.  
Dr. Stone





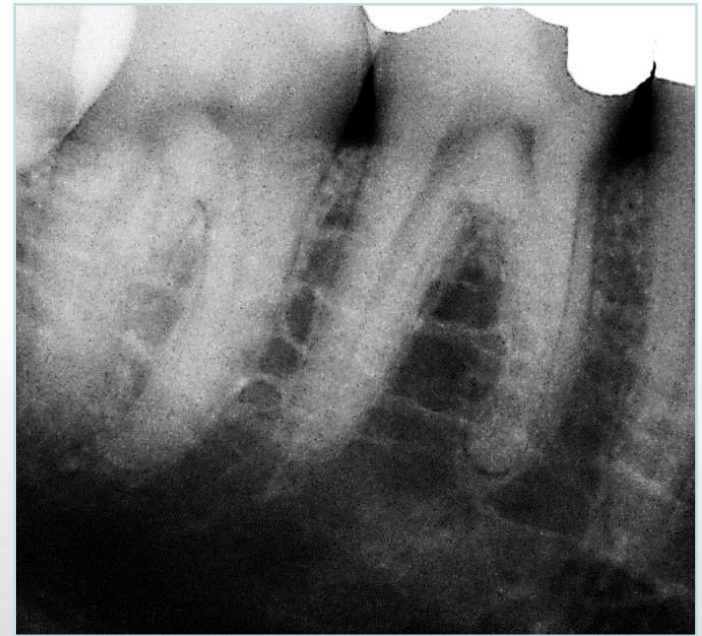


Gentlefile<sup>®</sup>

by MedicNRG

## Preserve the canal anatomy

(manual GF)17<15<10  
red> grey> brush> red<



Dr stone 3.2017



## Preserve the canal anatomy

RCT to old dentist . 0.10 > manual 17 GF > gray > red > brush > red. 3/2017 Stone





K-File 0.10 > GF manual Yellow > GF Gray > GF blue

