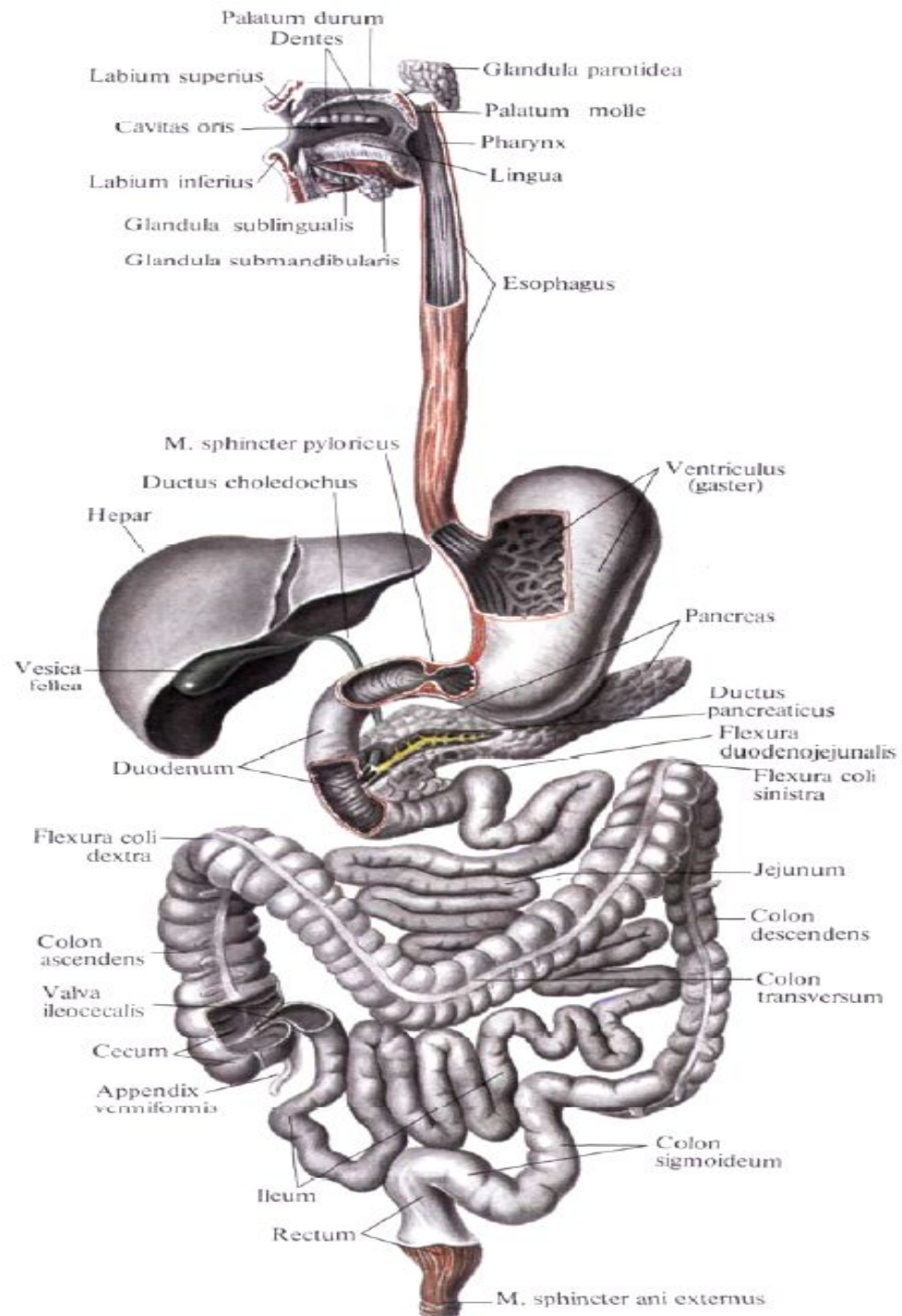
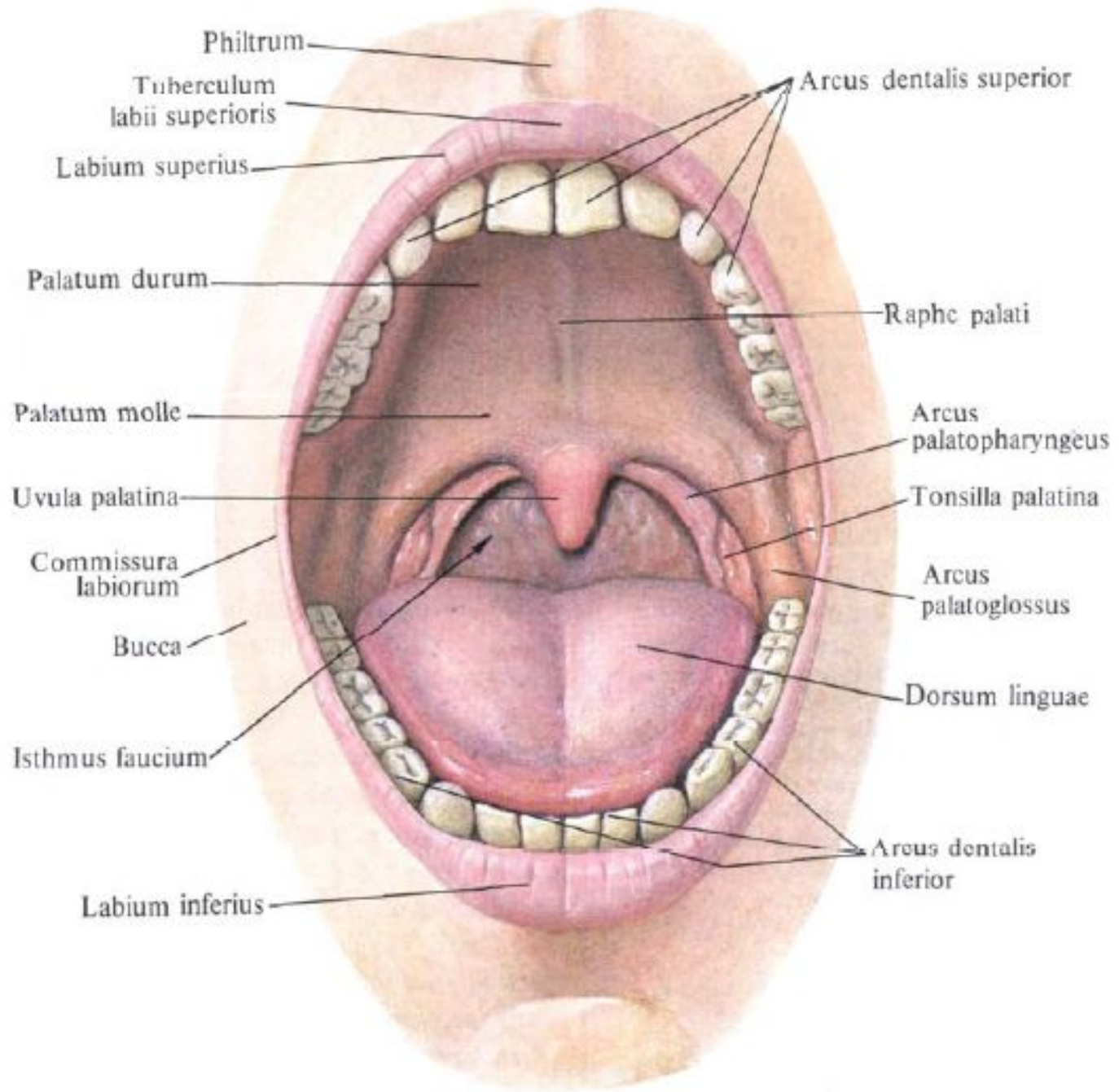


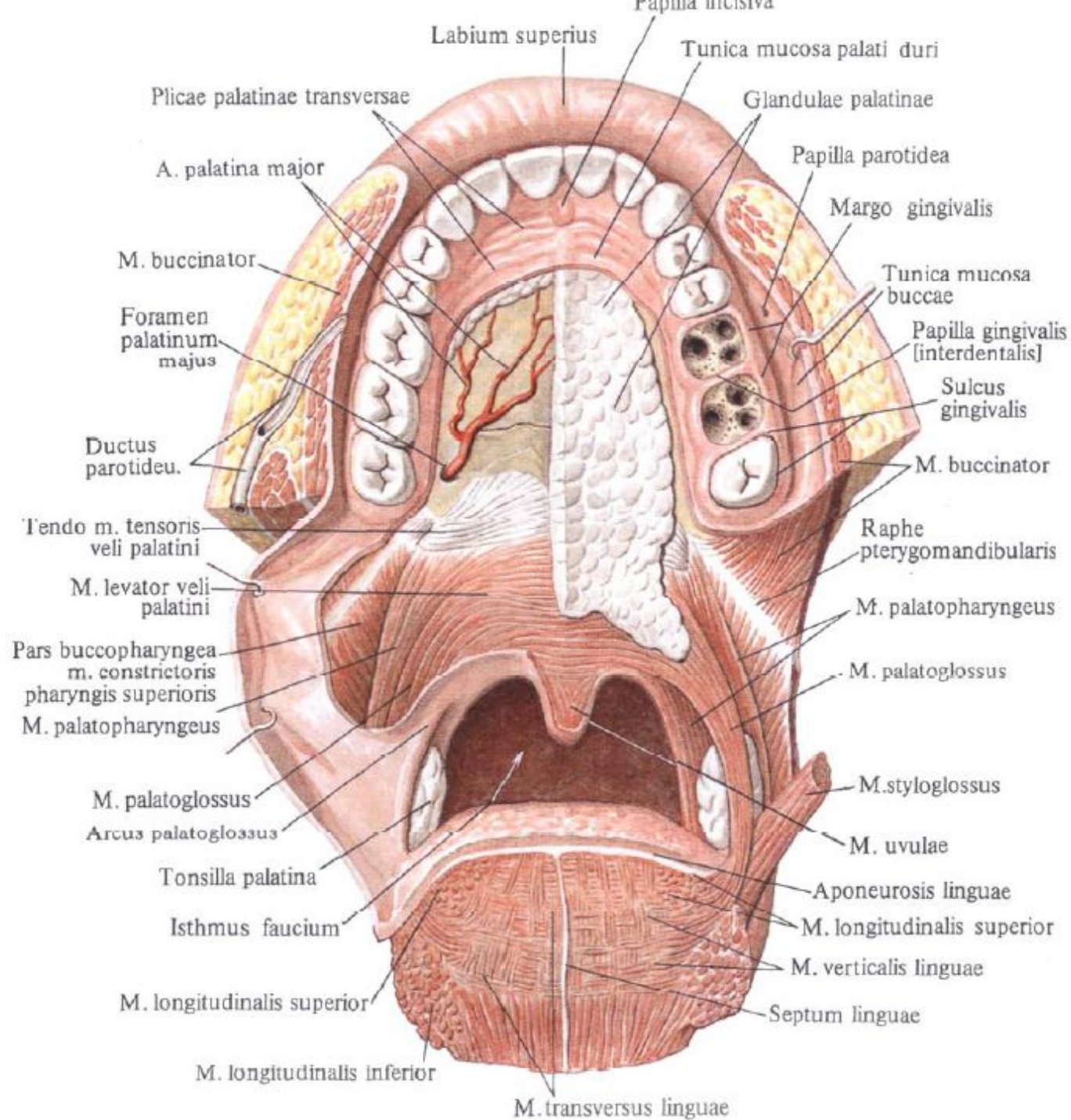
Пищеварительная система

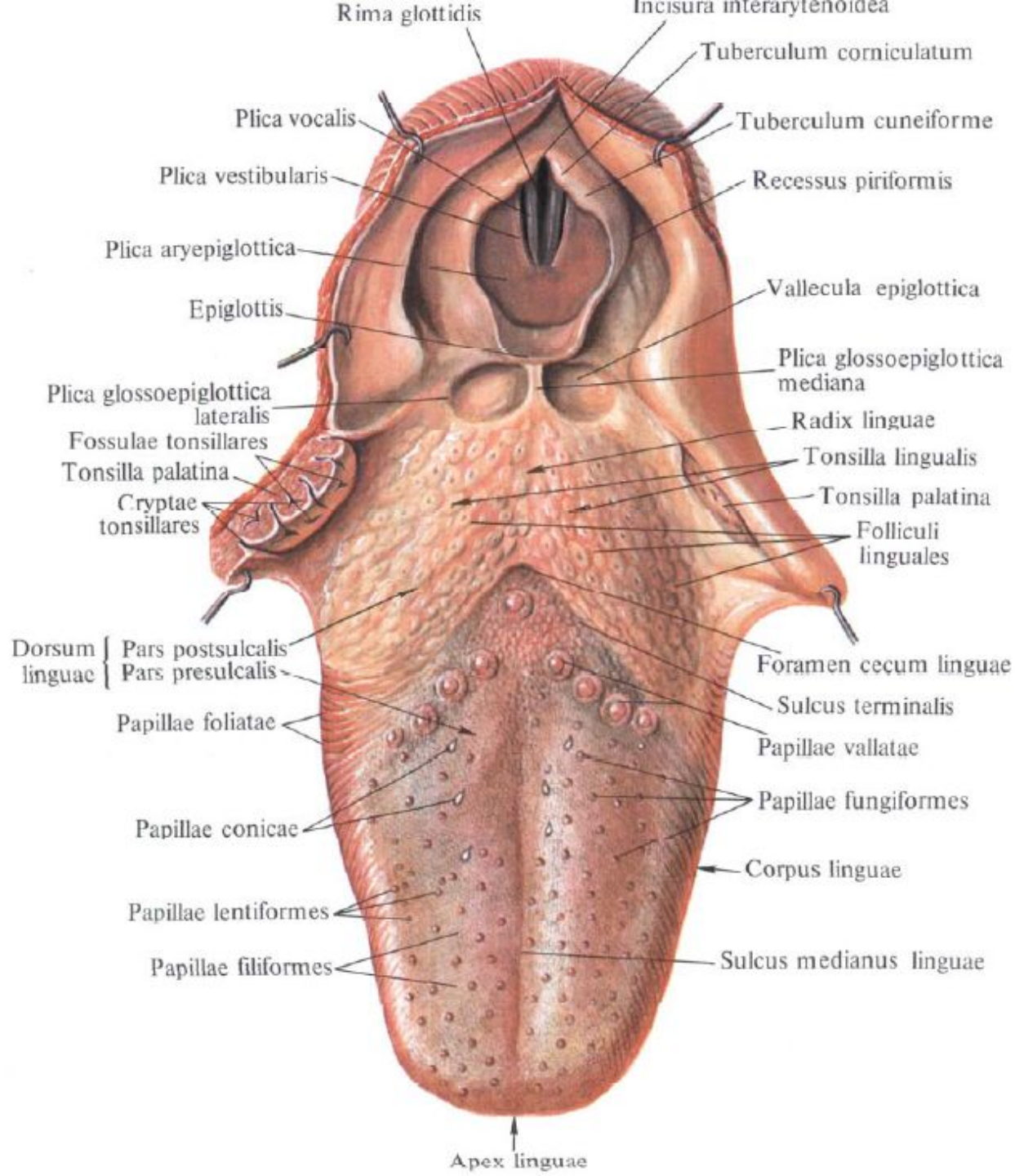
Занятие №1

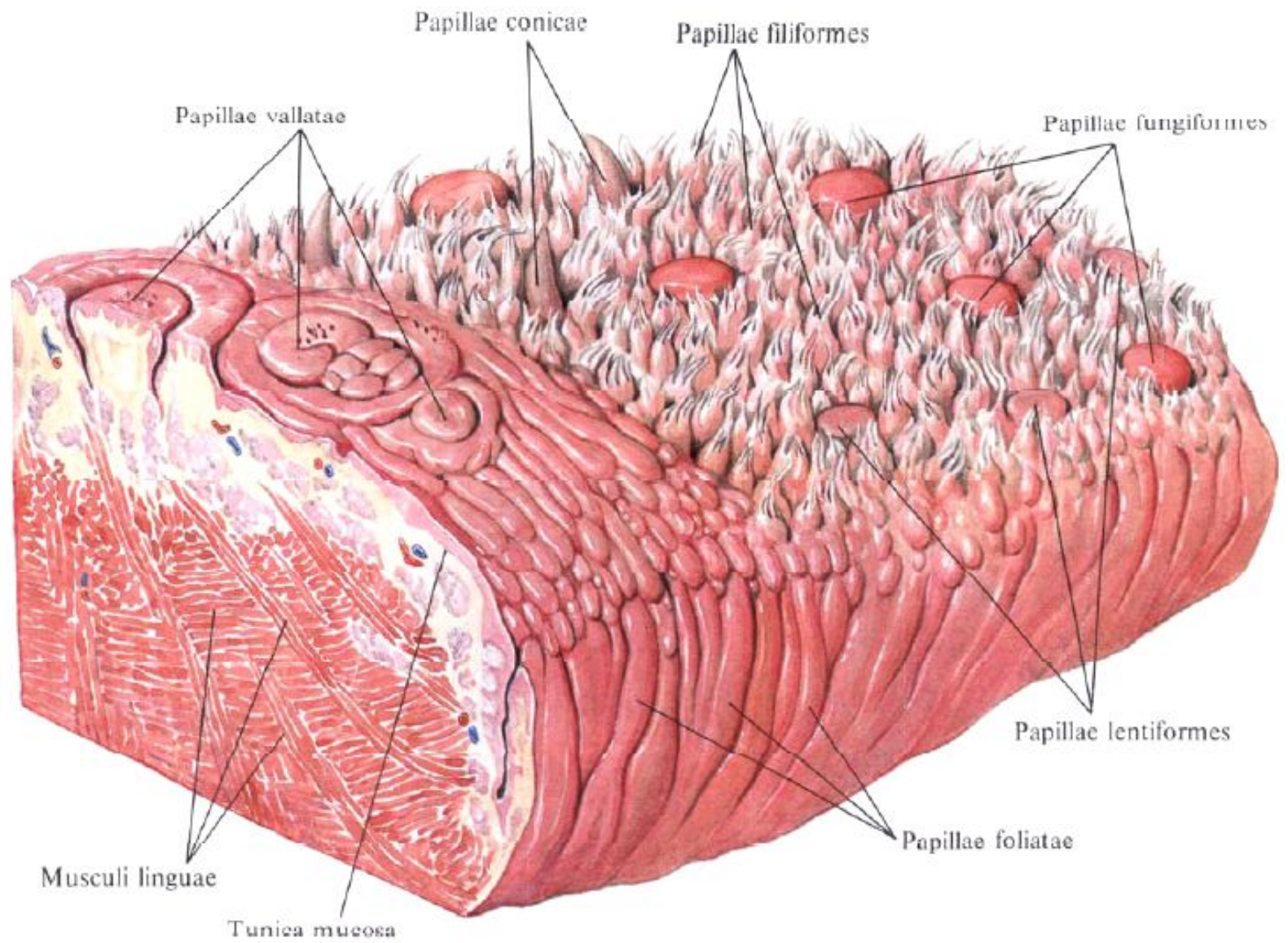
Анатомия органов пищеварения: ротовая полость. Губы, щеки, твердое и мягкое небо, зев, язык.

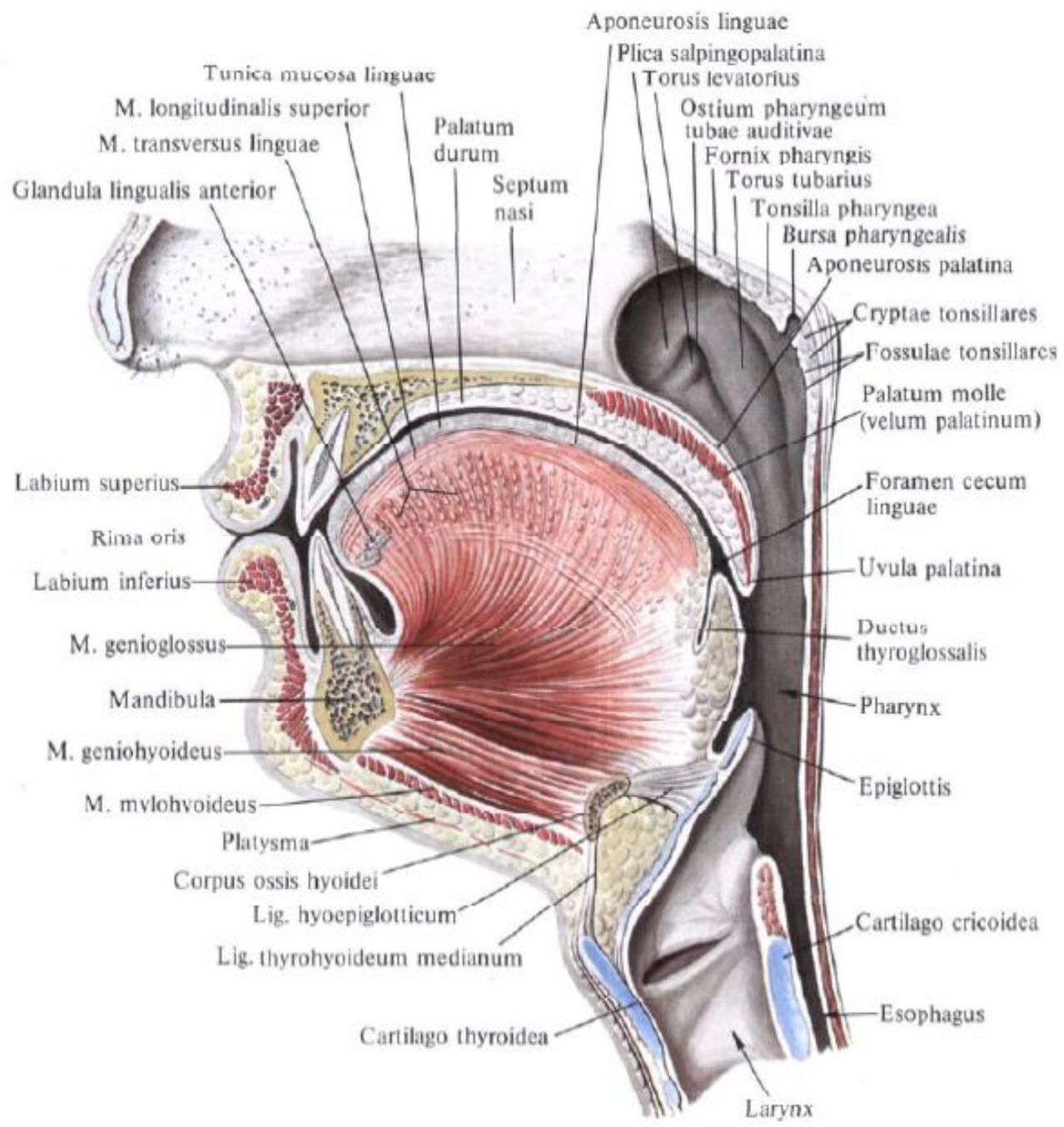






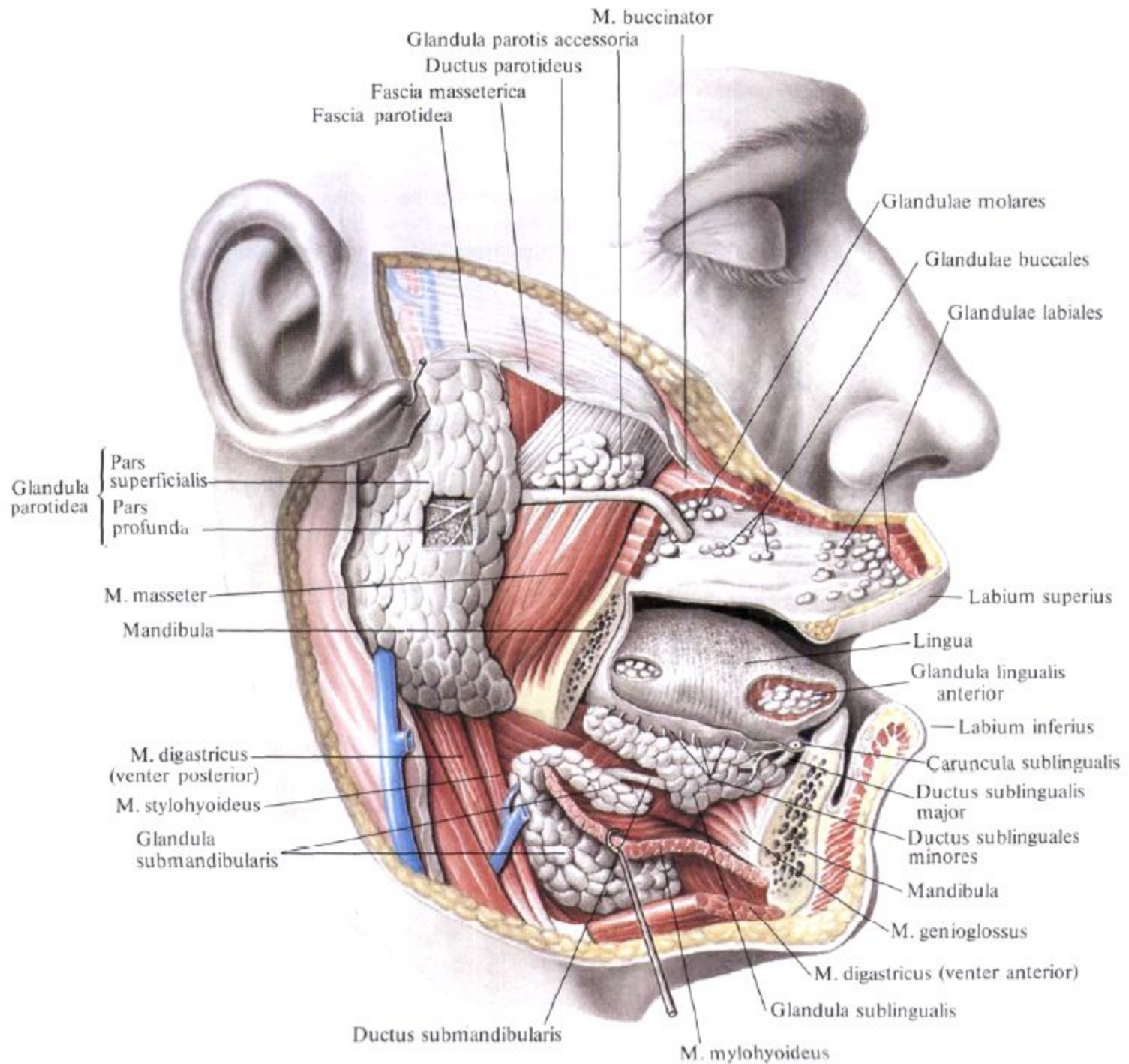


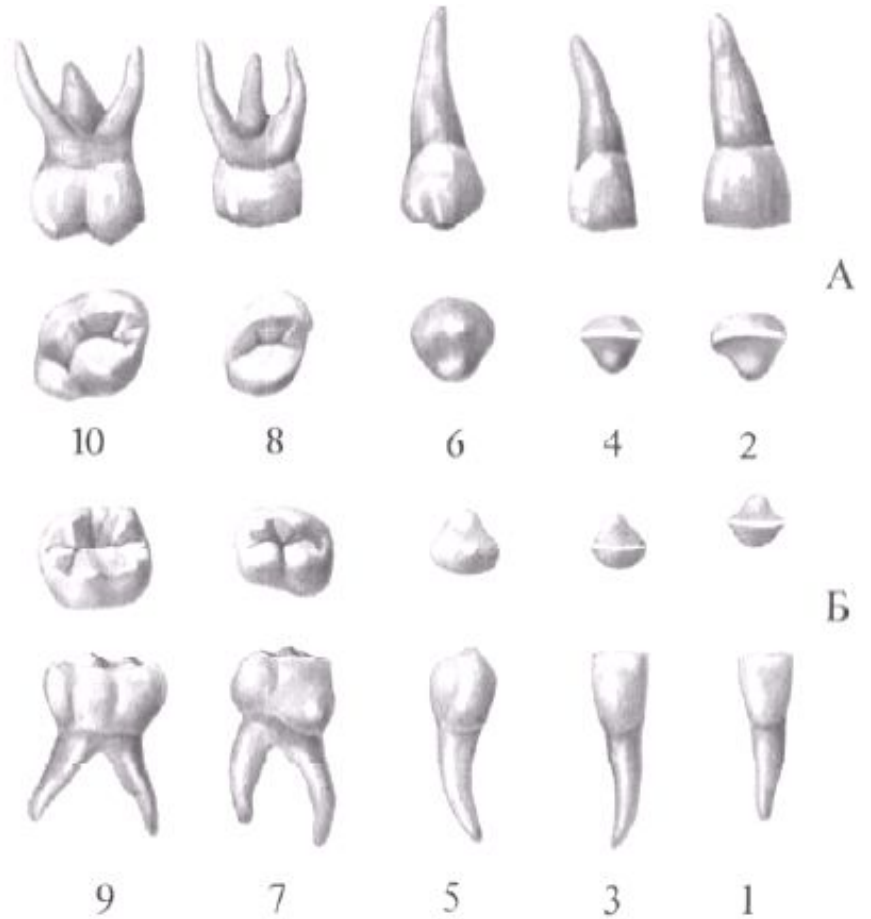
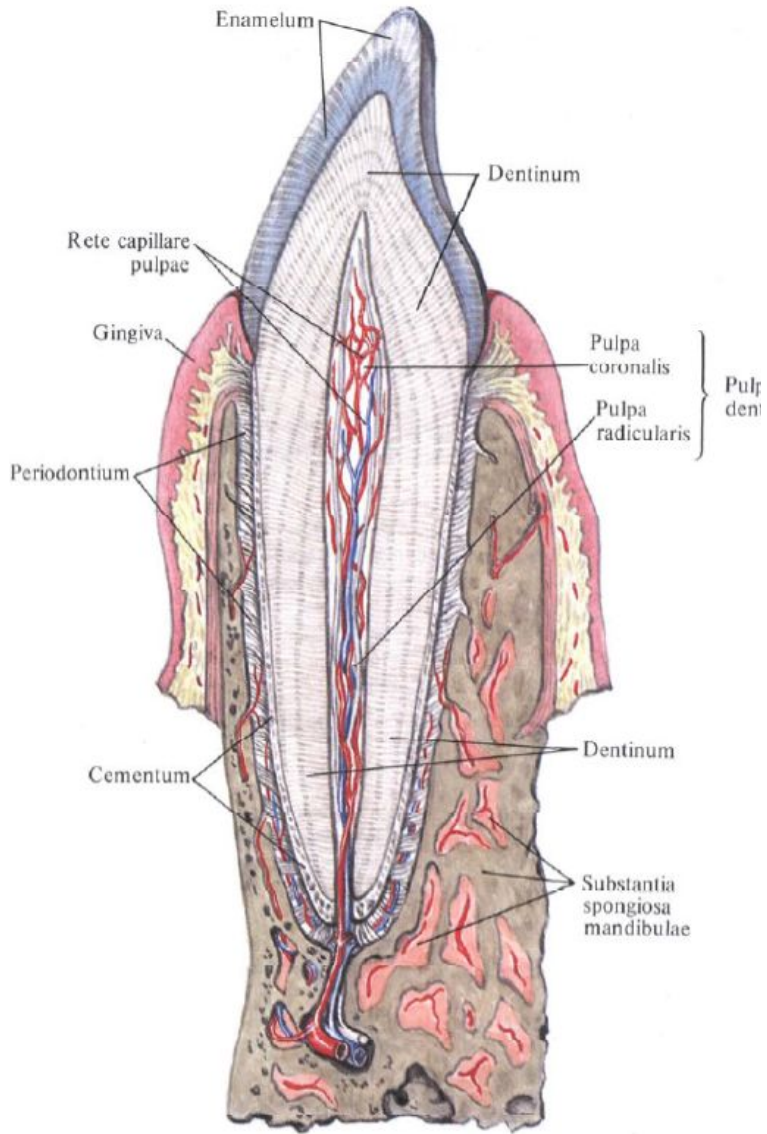


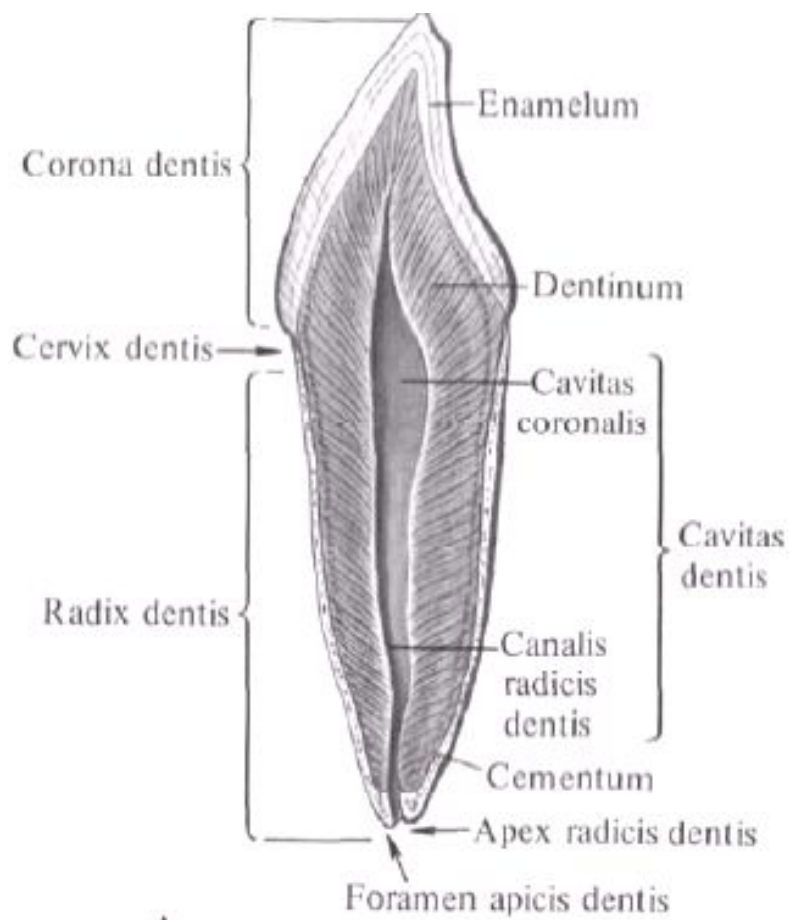


Занятие №2

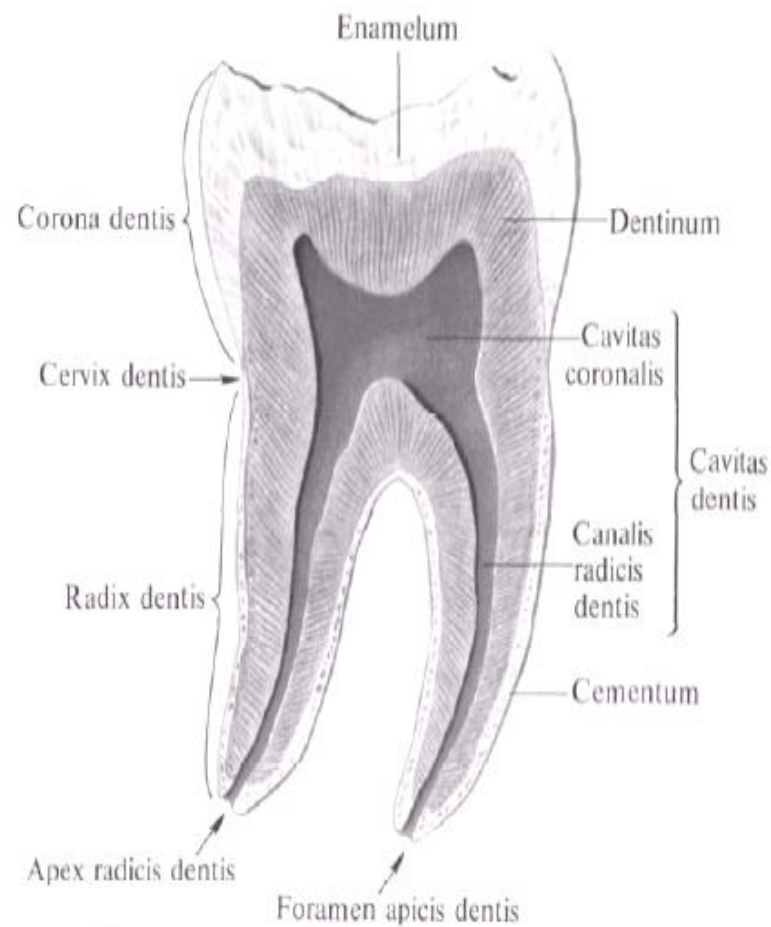
Зубы, большие и малые слюнные железы.







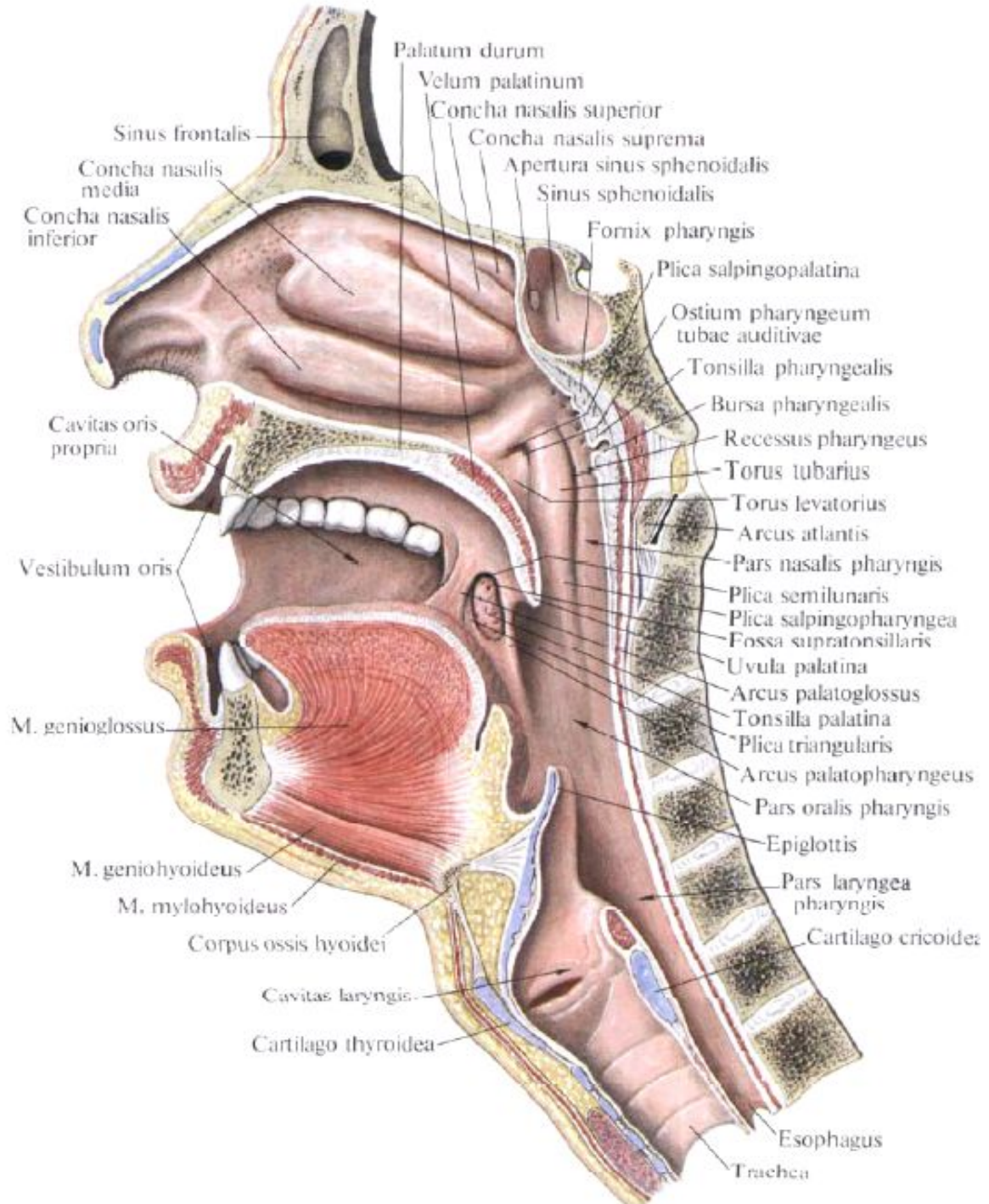
A

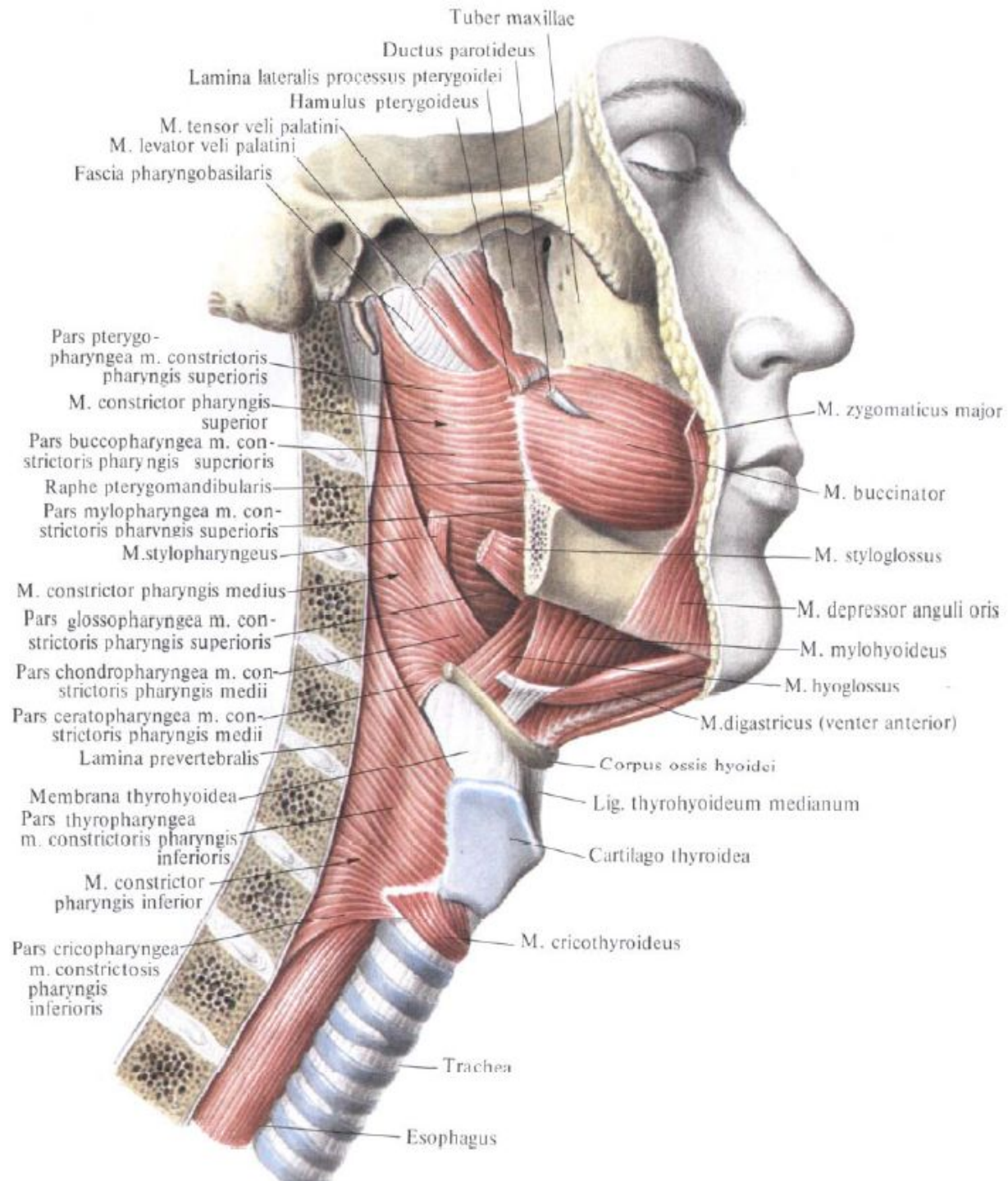


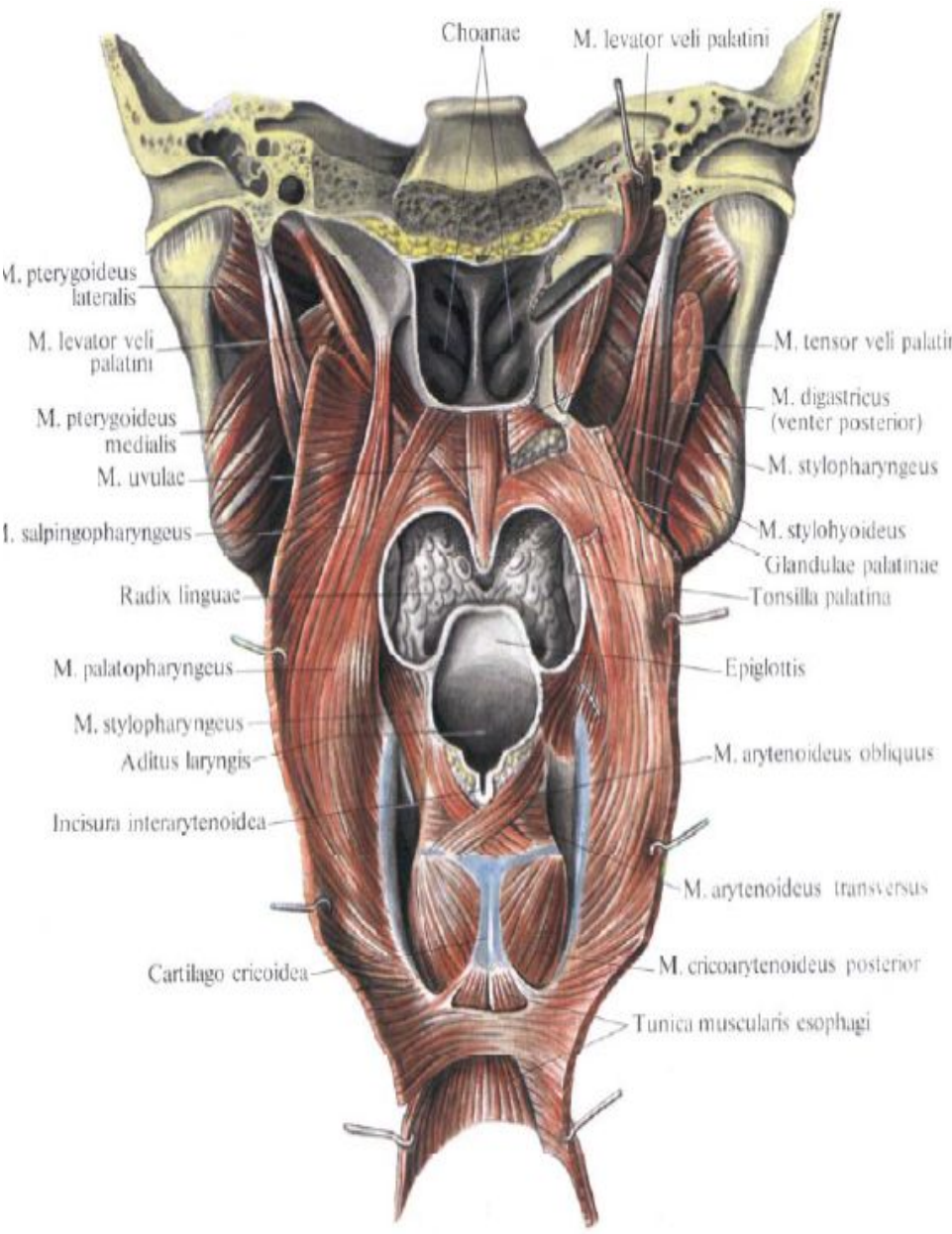
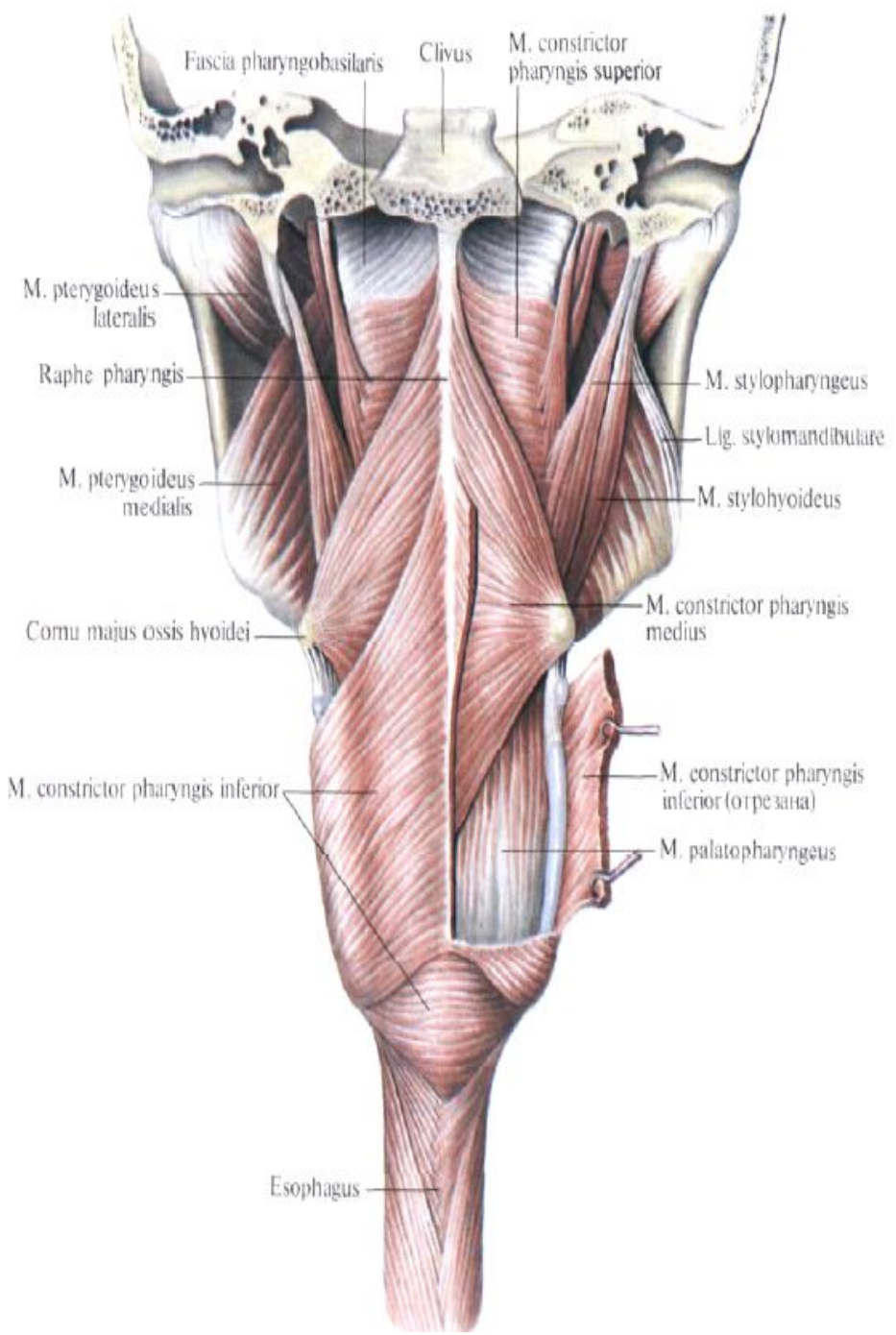
B

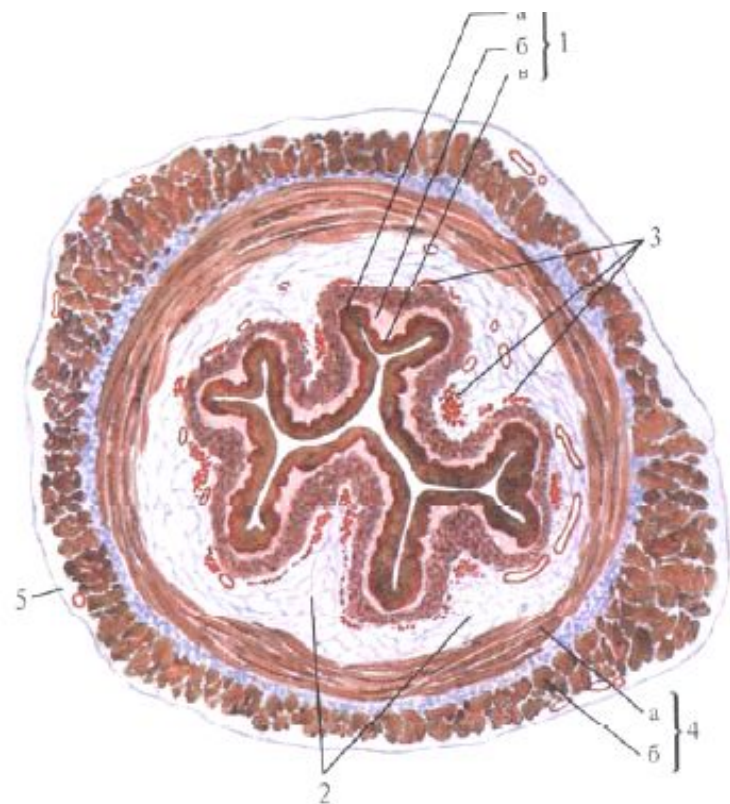
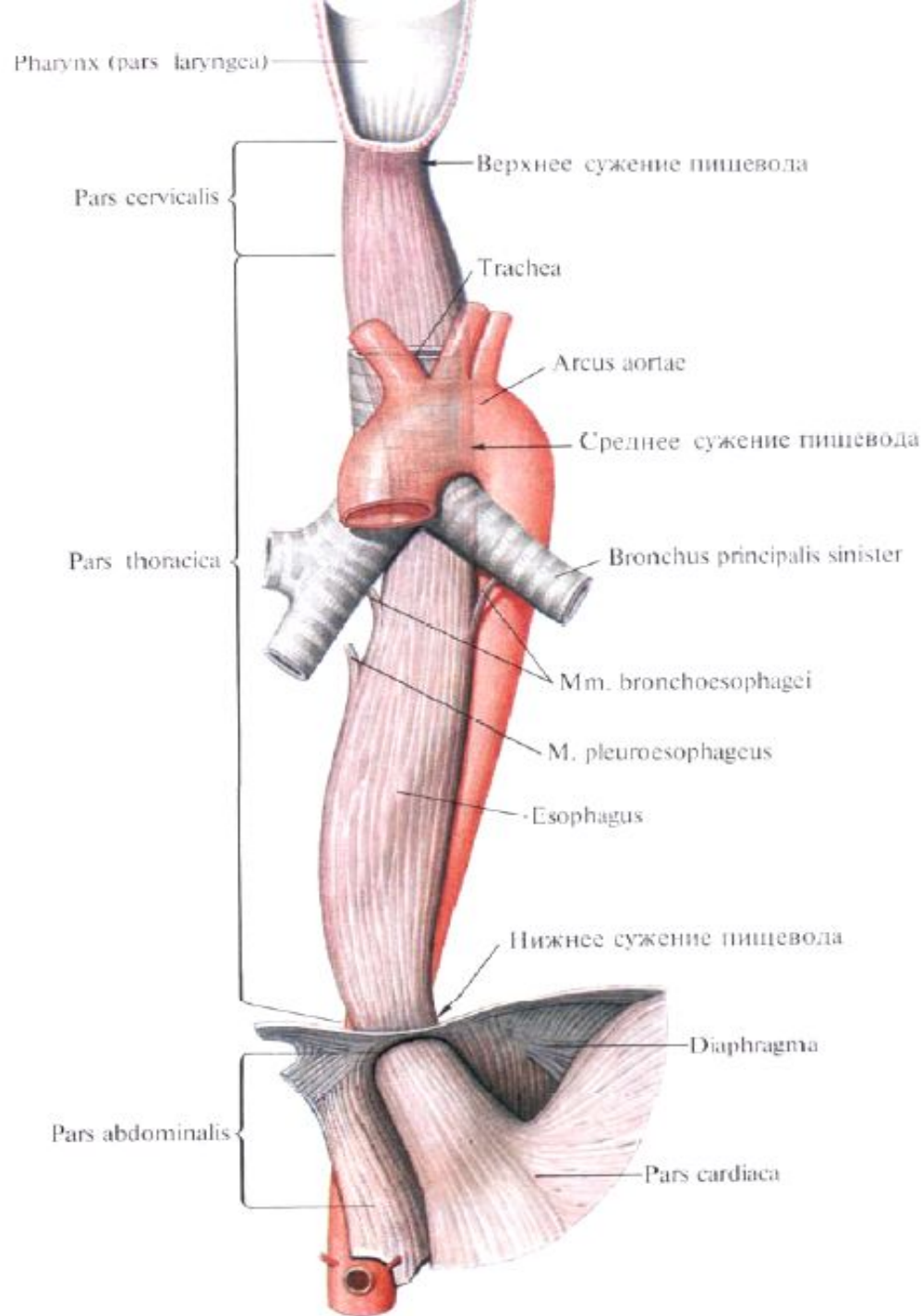
Занятие №3

Глотка, пищевод. Лимфоидное глоточное кольцо. Анатомия желудка.

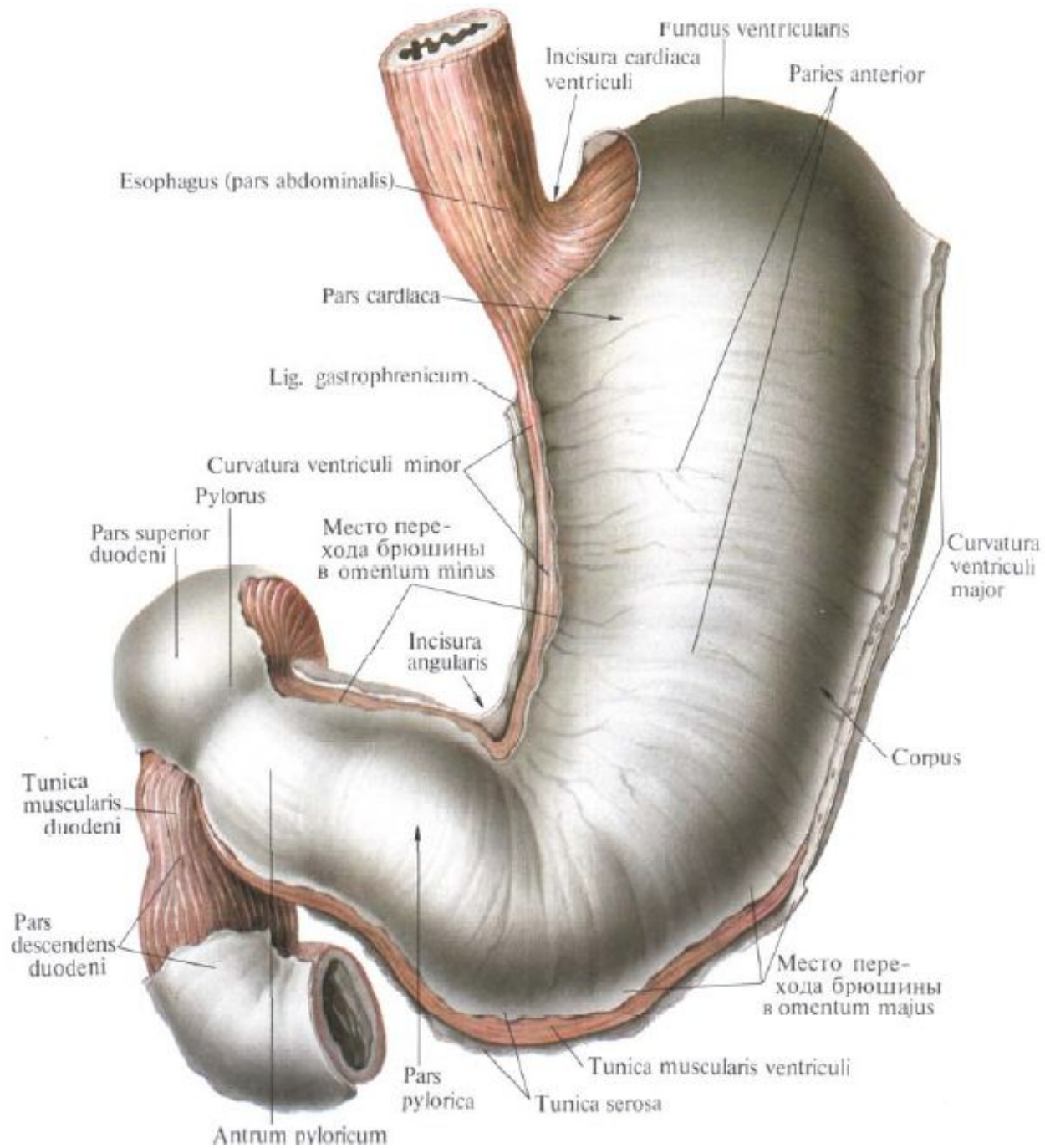


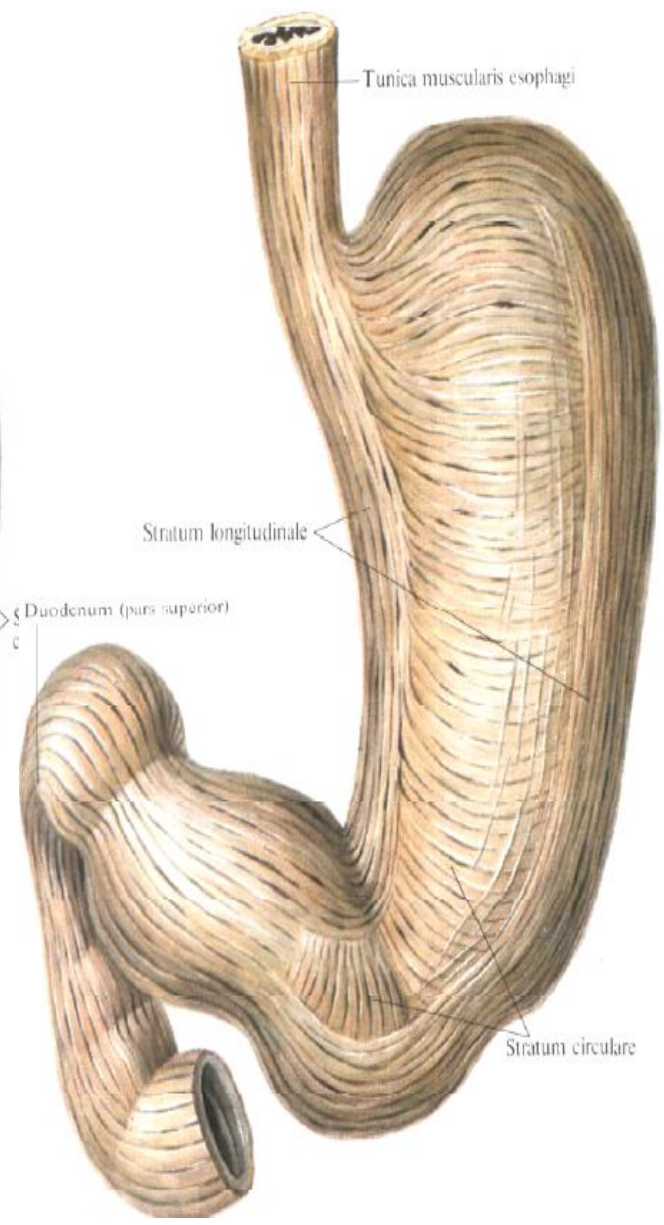
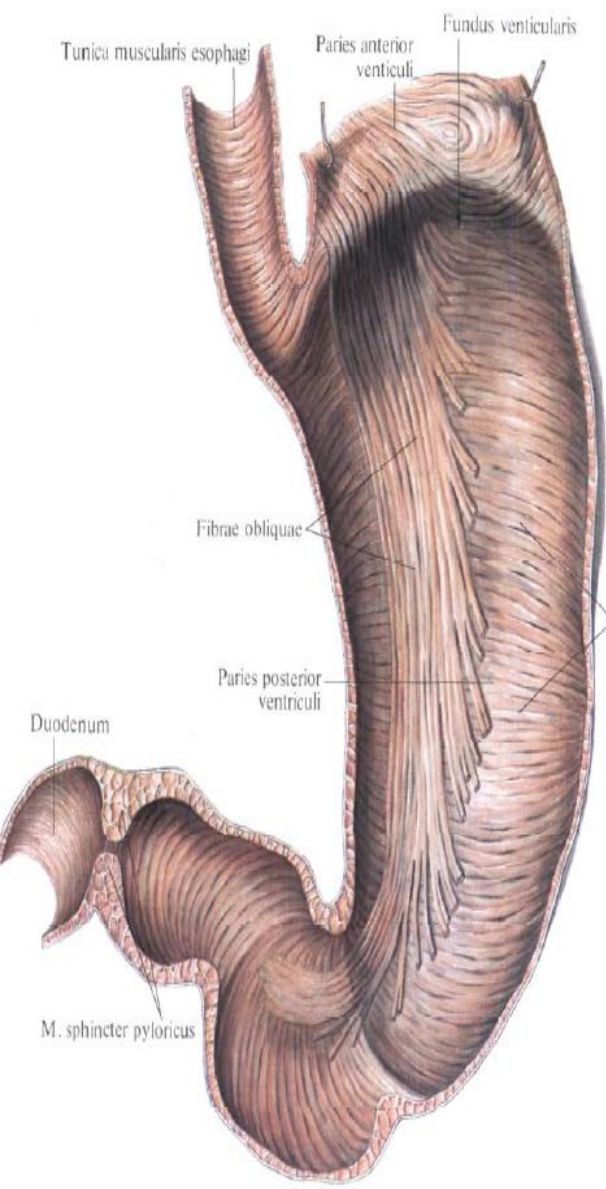
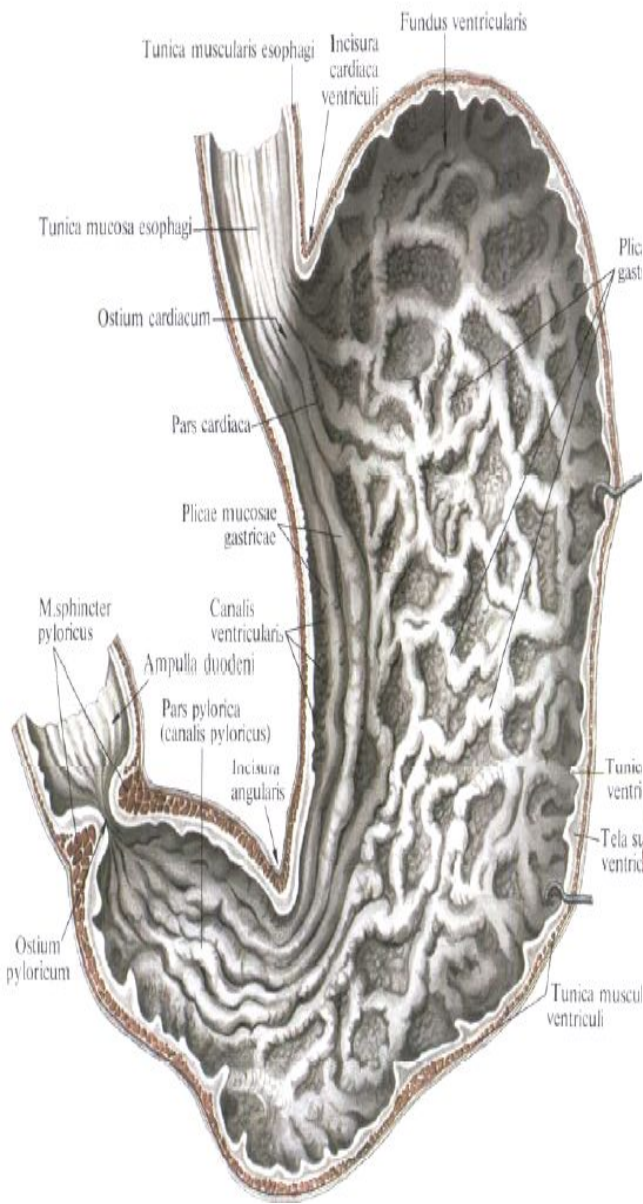






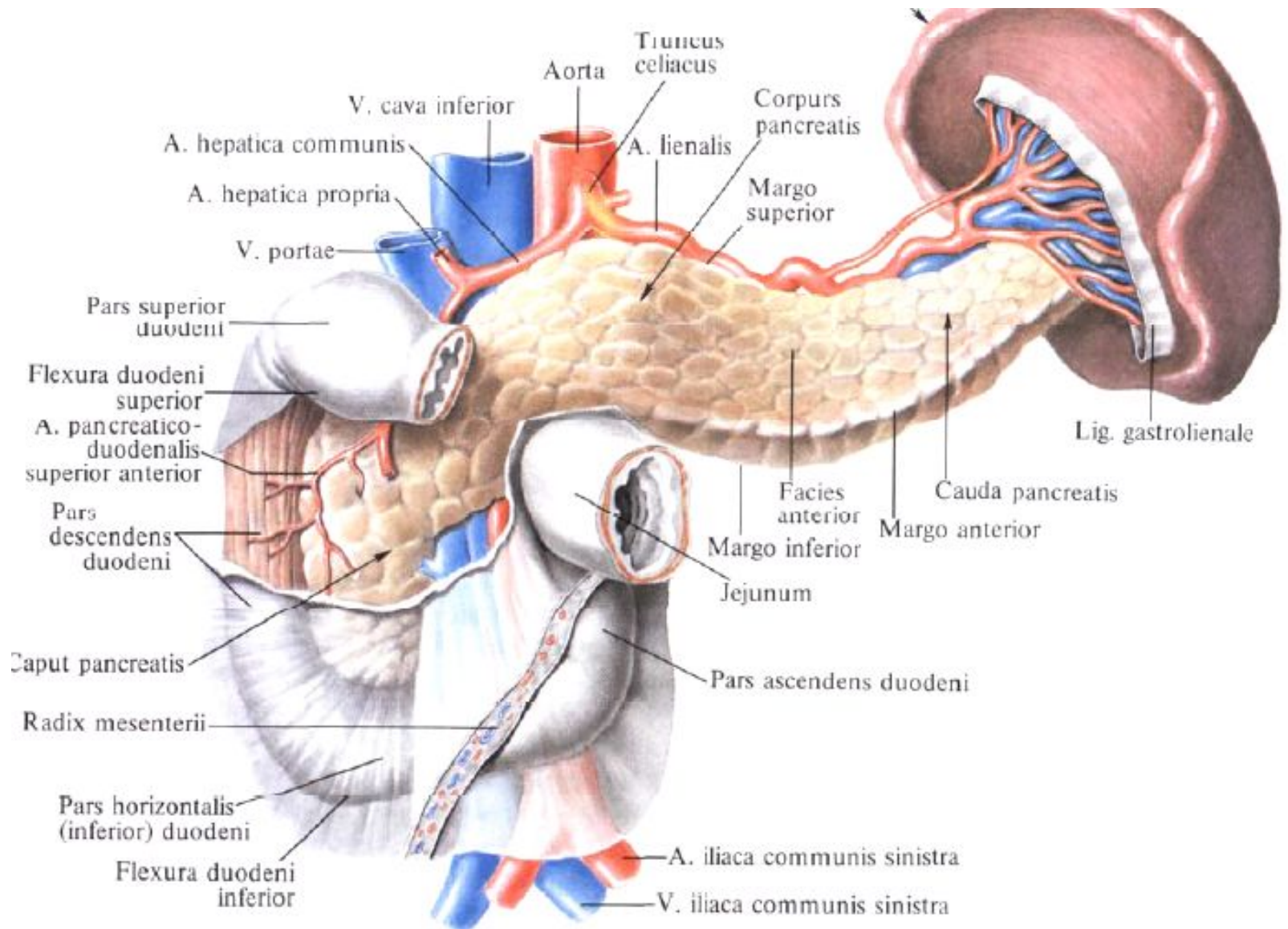
1 – tunica mucosa (a – epithelium, б – lamina muscularis mucosae, в – lamina propria mucosae);
 2 – tela submucosa; 3 – glandulae esophageae; 4 – tunica muscularis (a – stratum circulare tunicae muscularis, б – stratum longitudinale tunica muscularis); 5 – tunica adventitia.

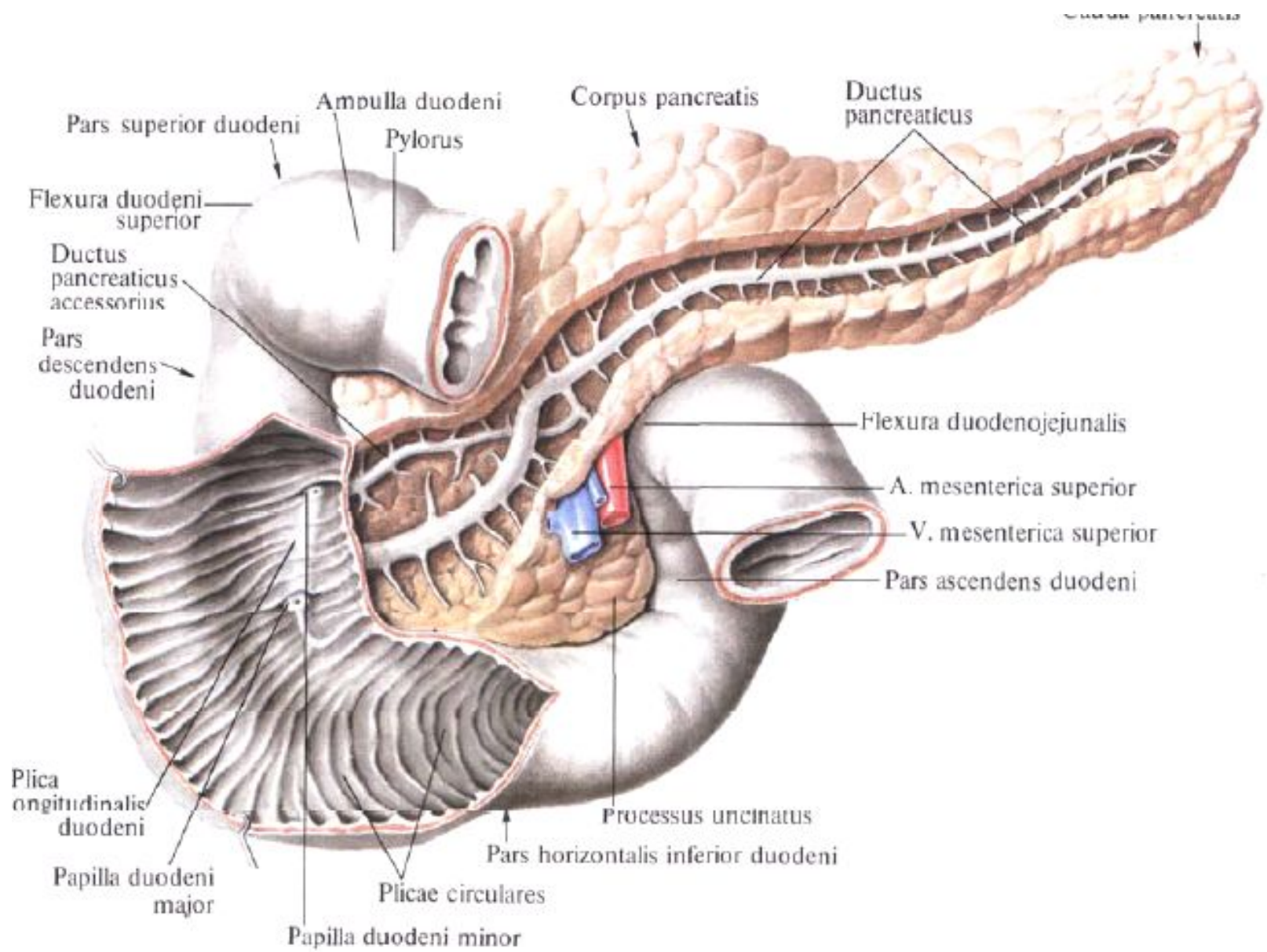


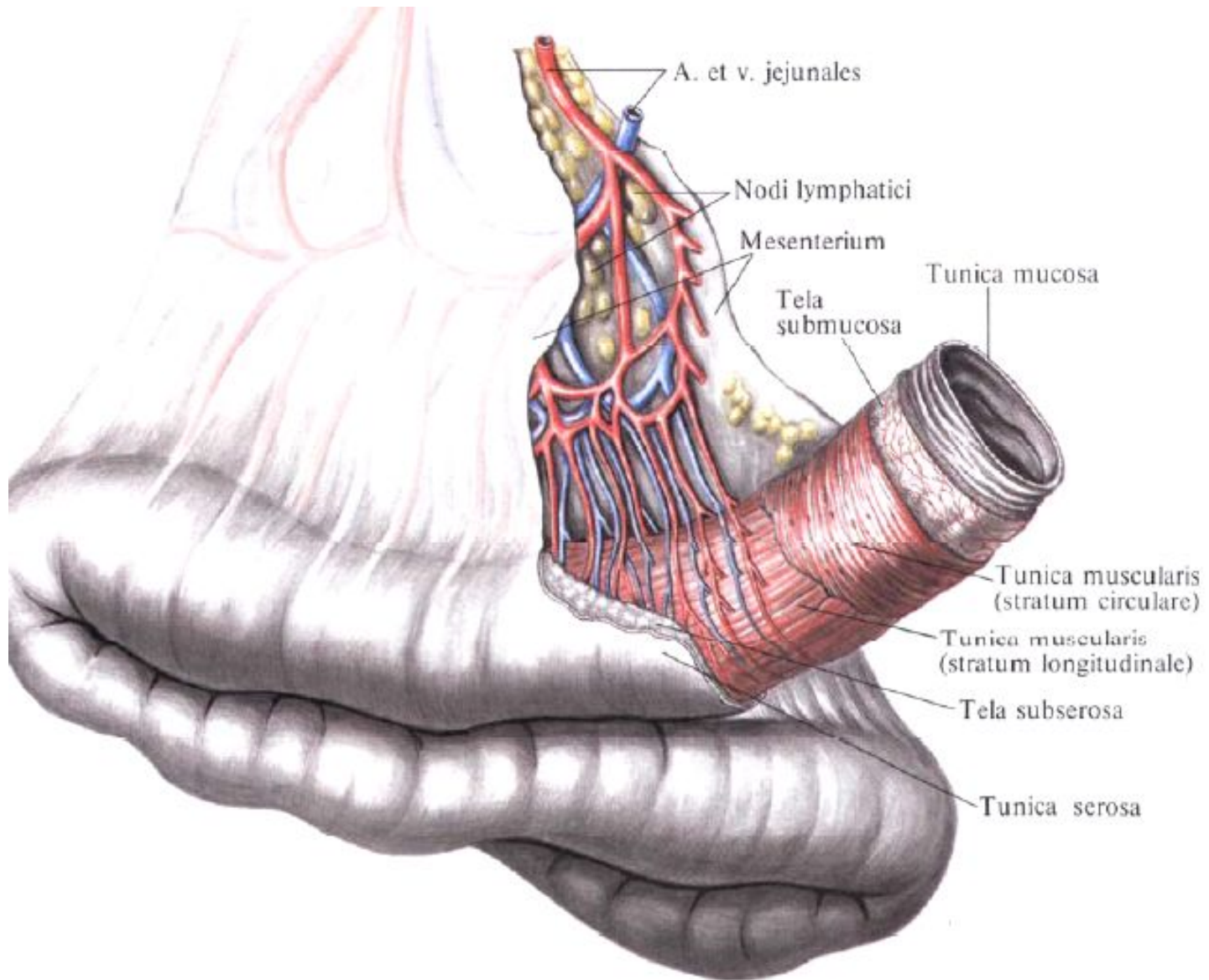


Занятие №4

Анатомия тонкой и толстой кишки.







A. et v. jejunales

Nodi lymphatici

Mesenterium

Tela submucosa

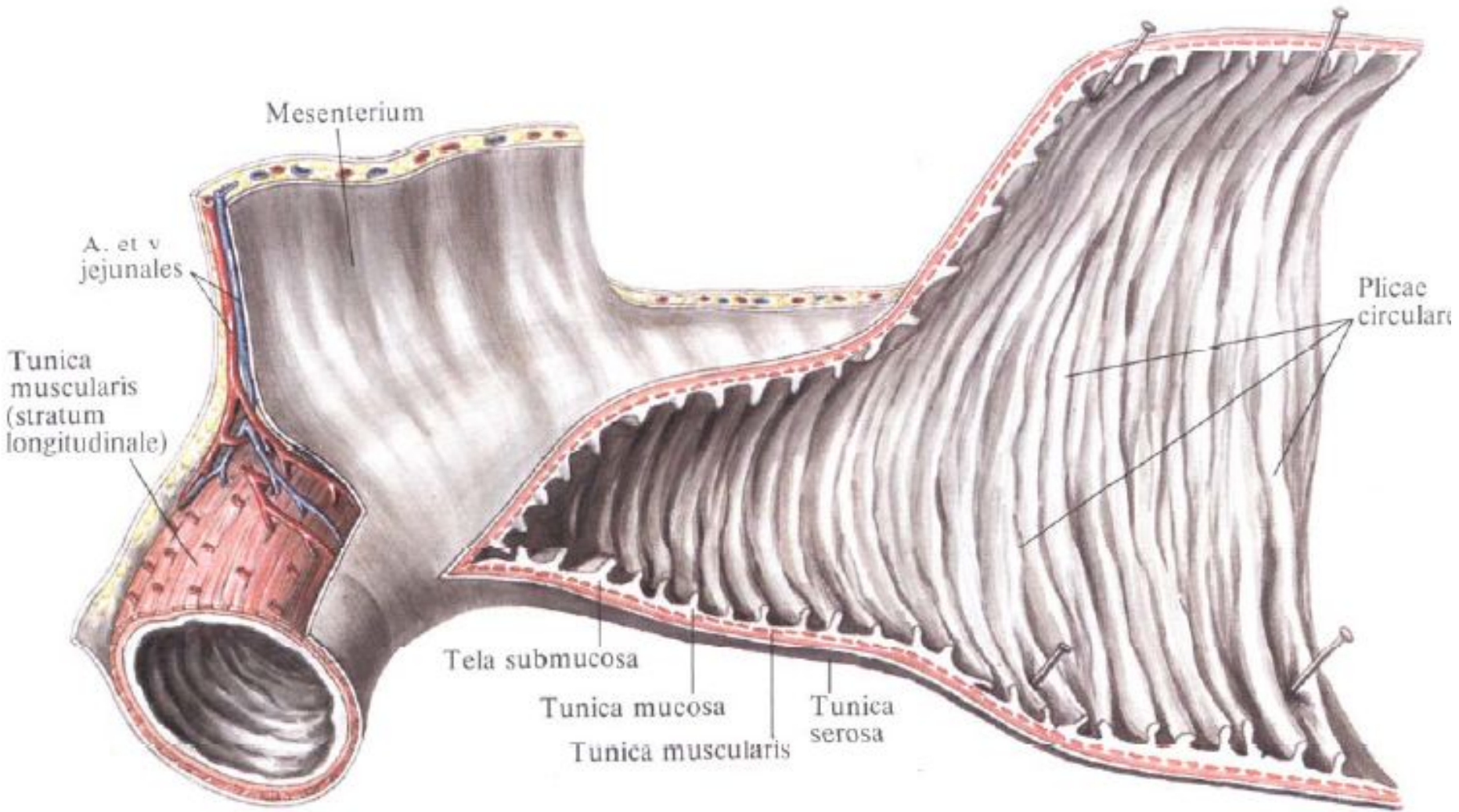
Tunica mucosa

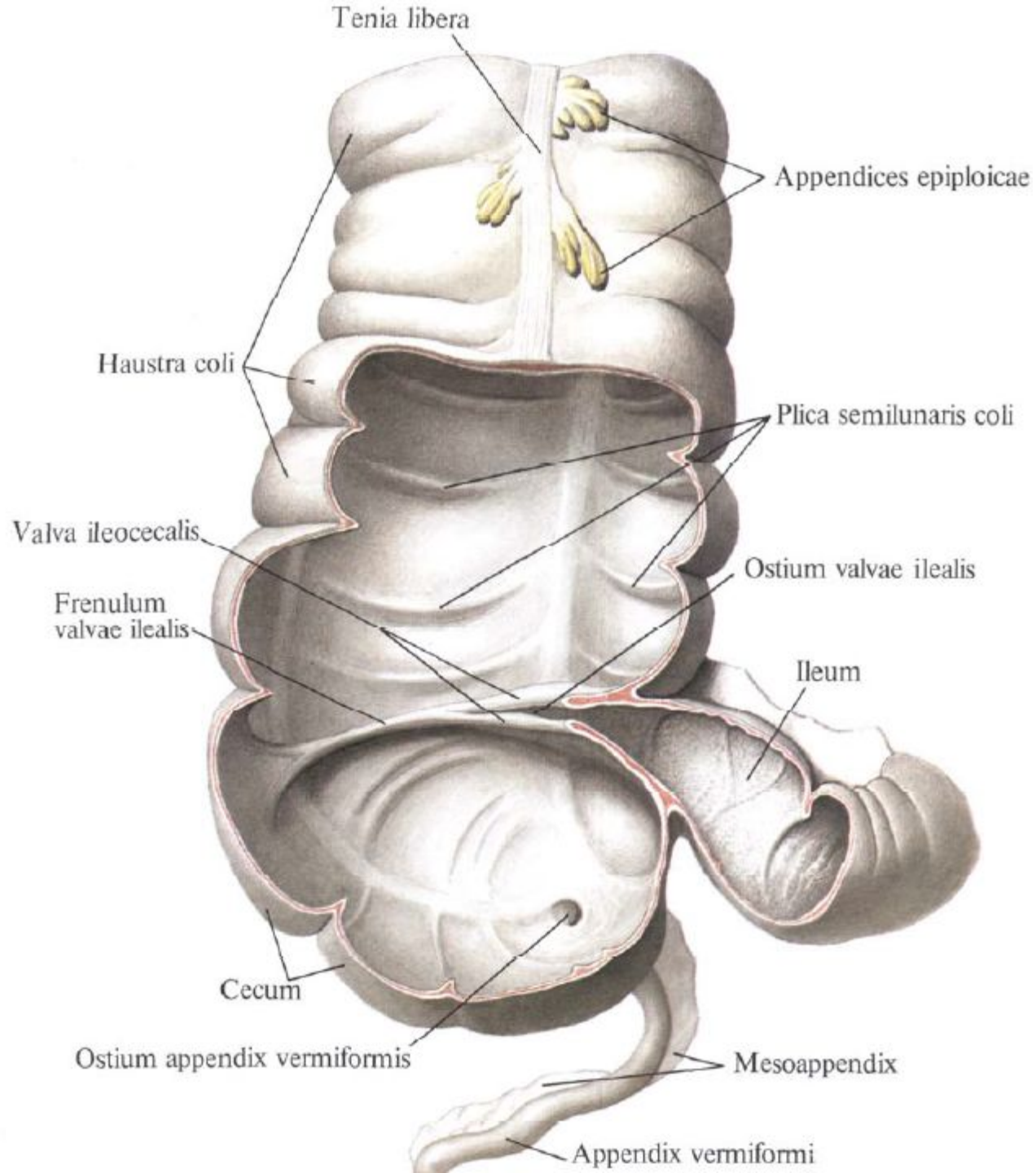
Tunica muscularis (stratum circulare)

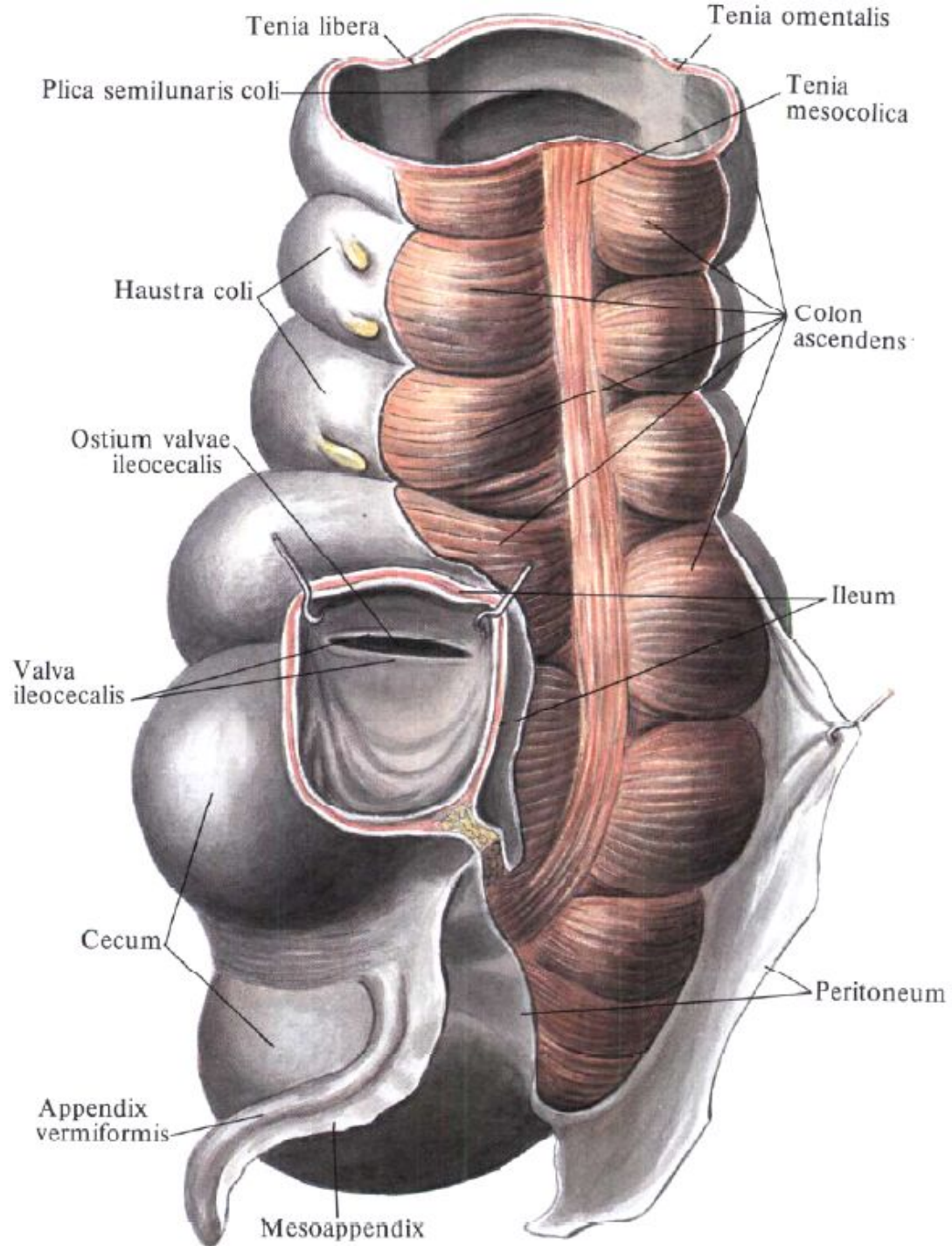
Tunica muscularis (stratum longitudinale)

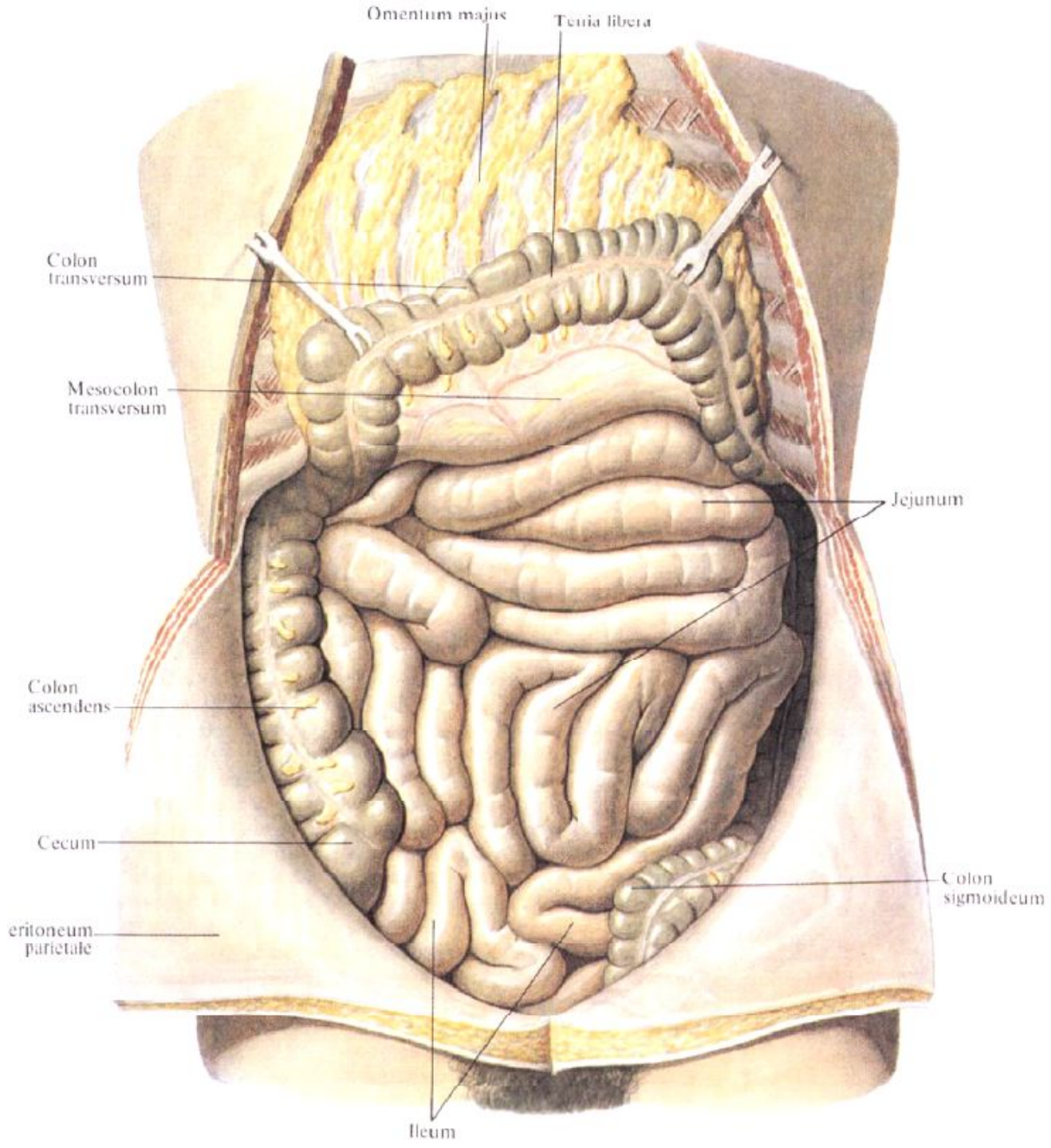
Tela subserosa

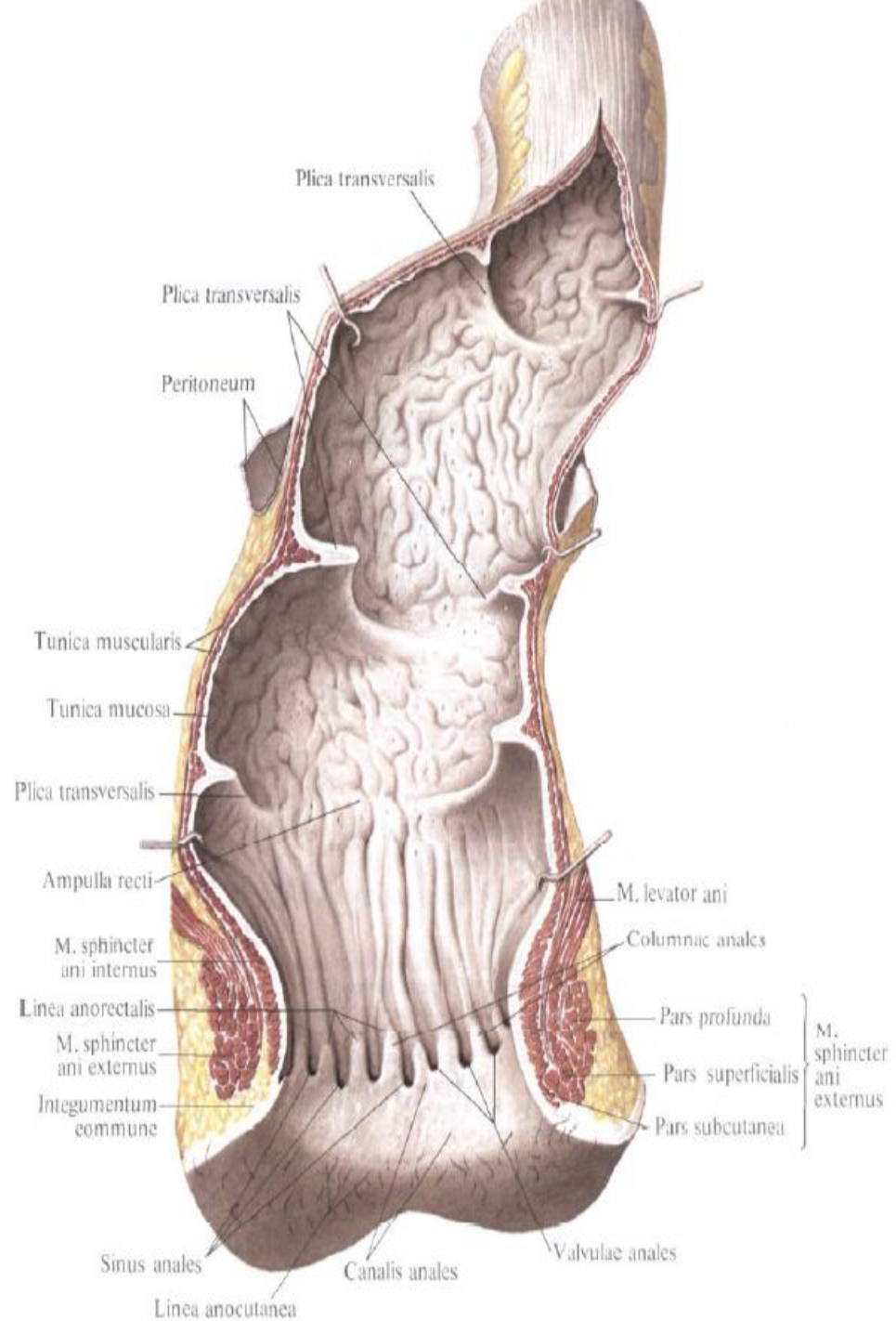
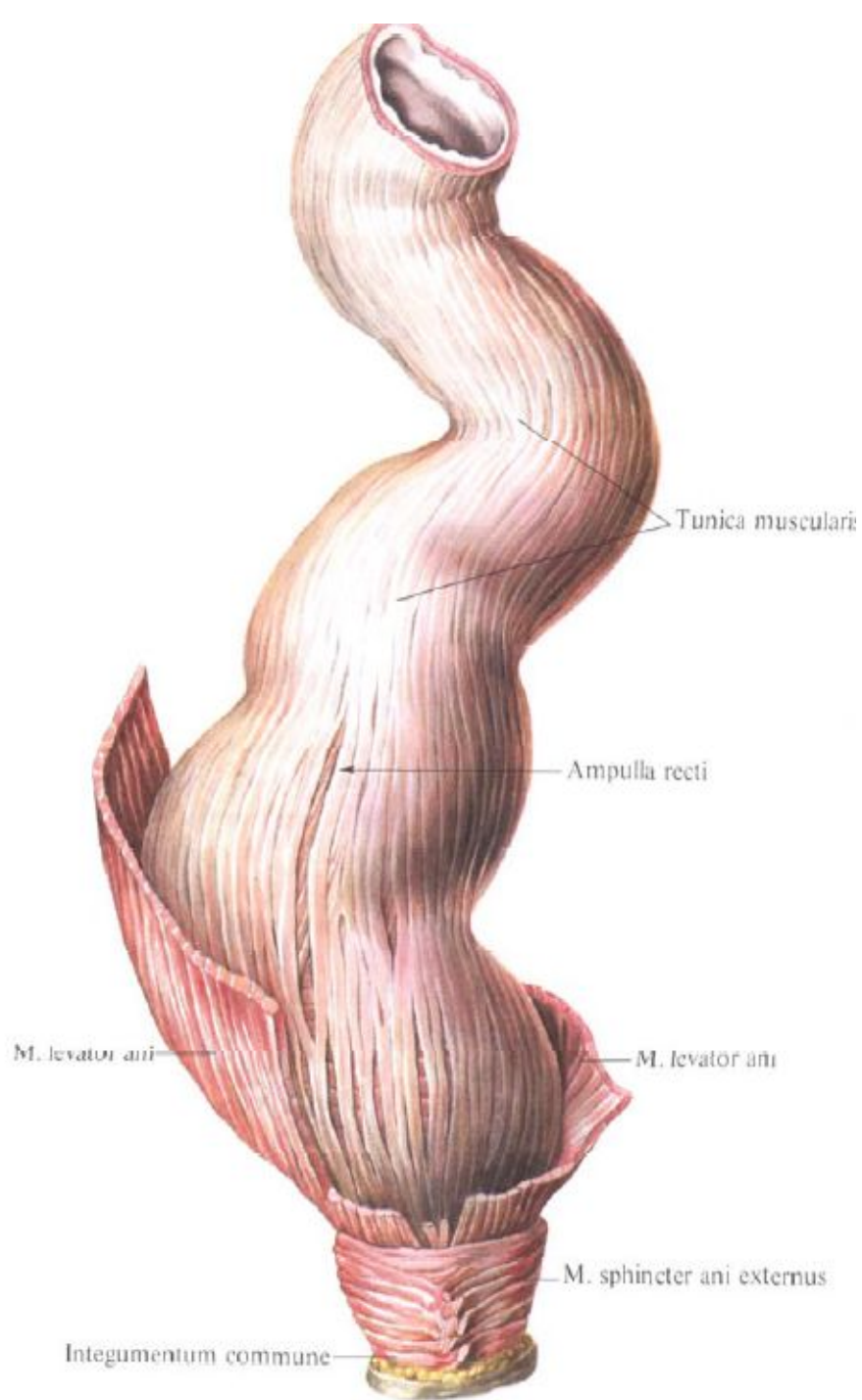
Tunica serosa

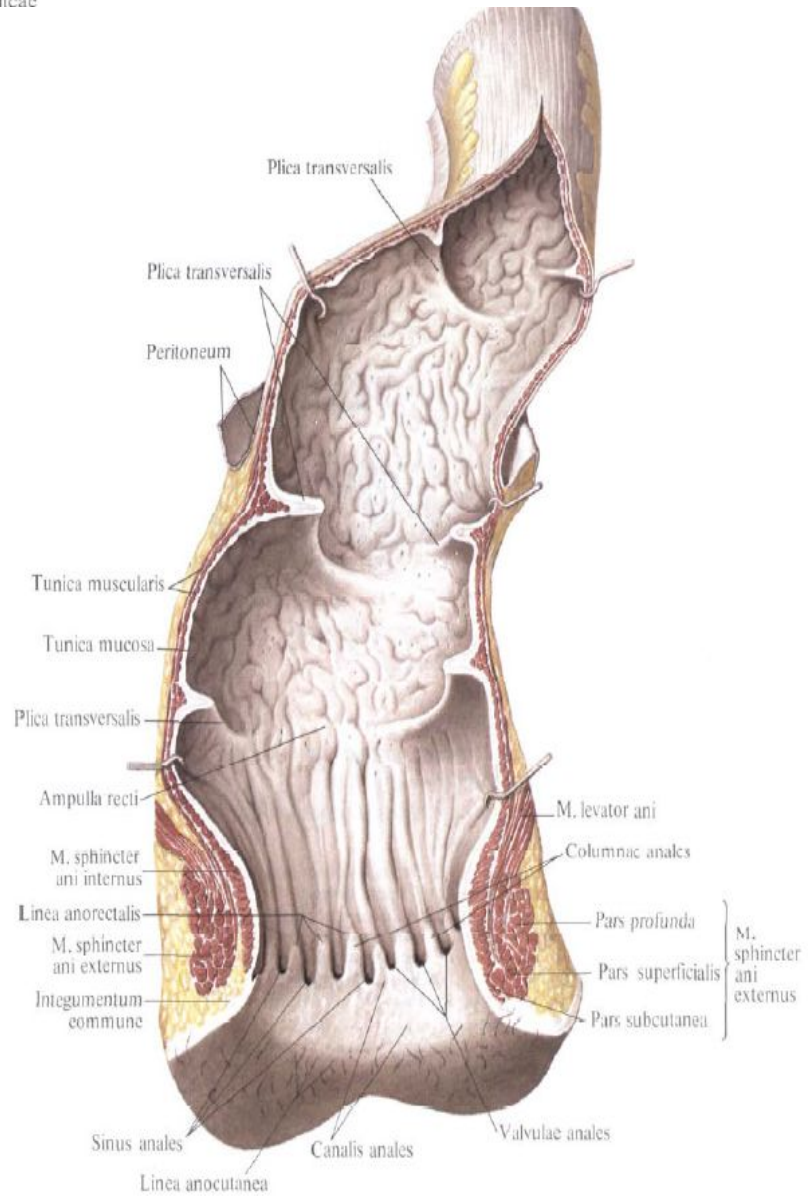
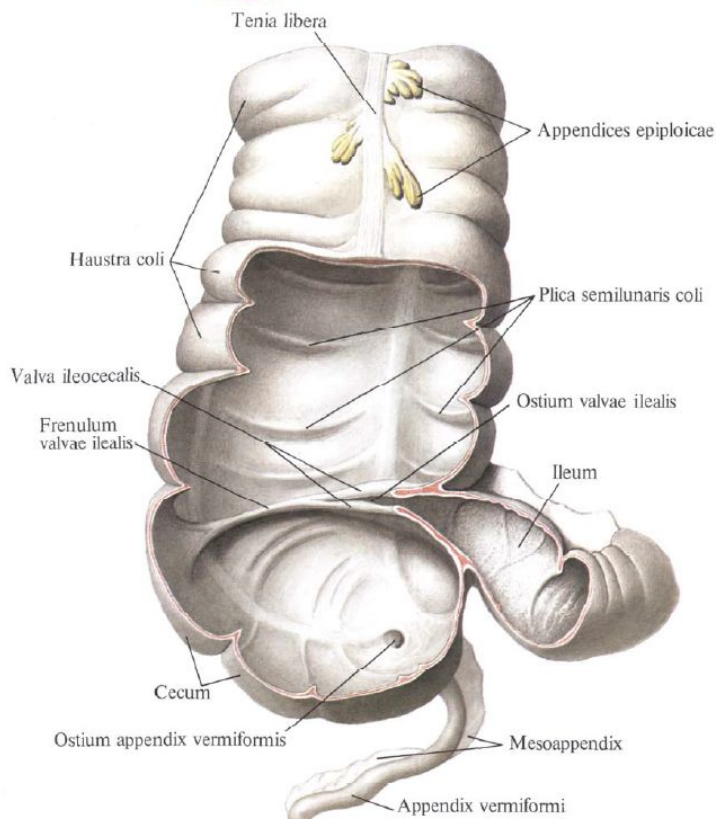
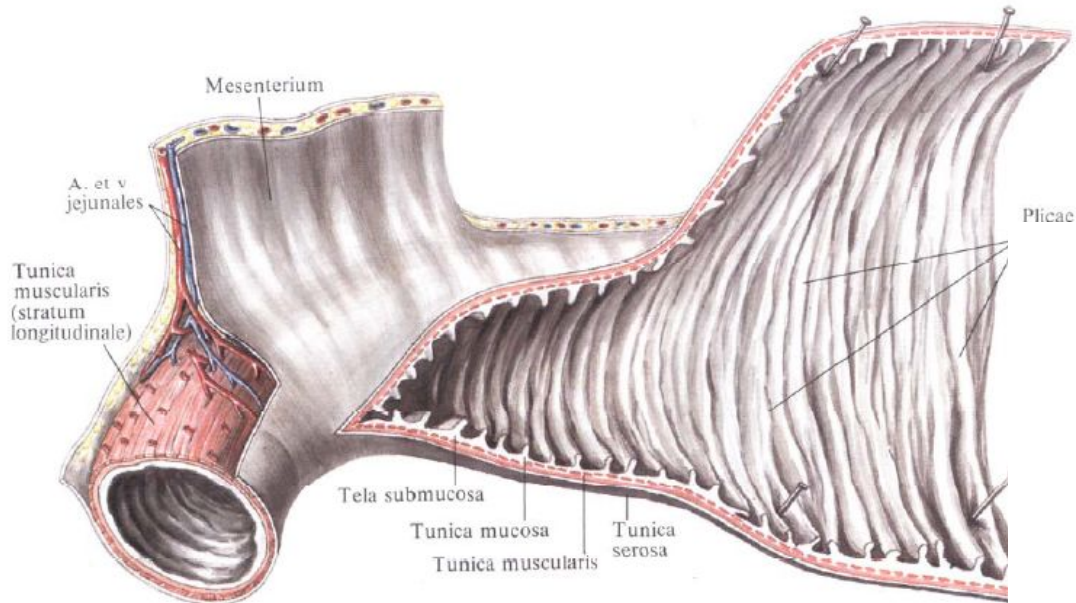


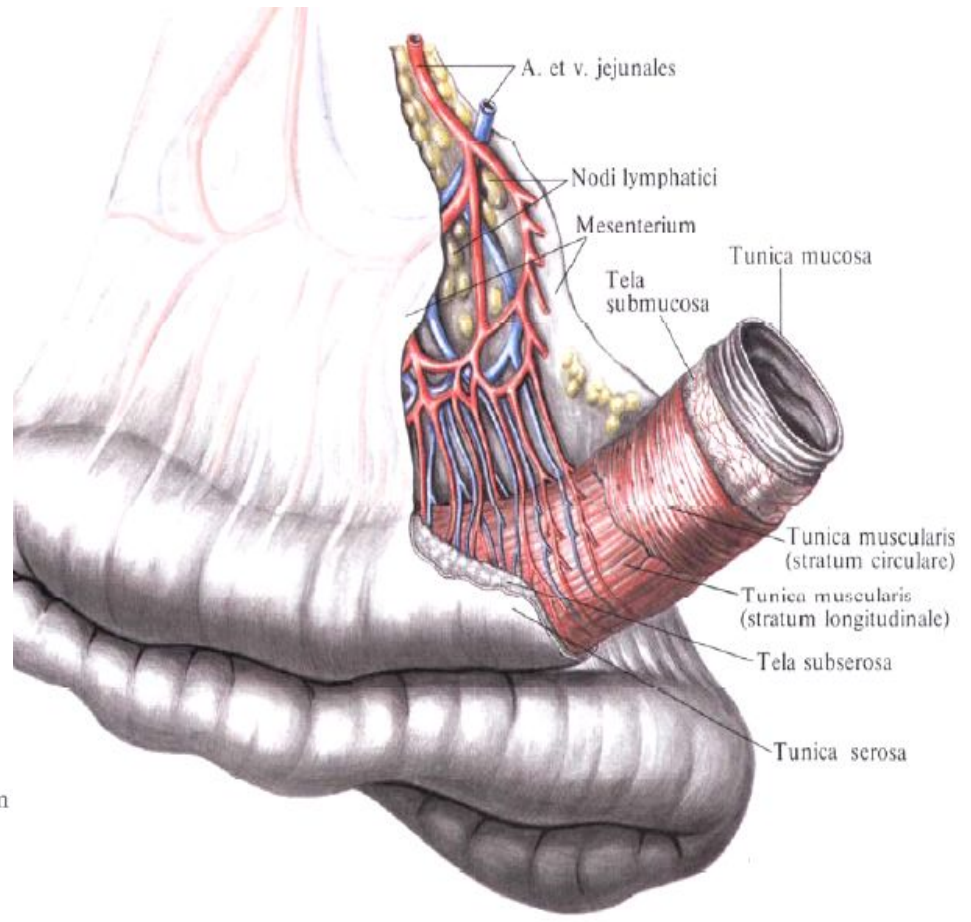
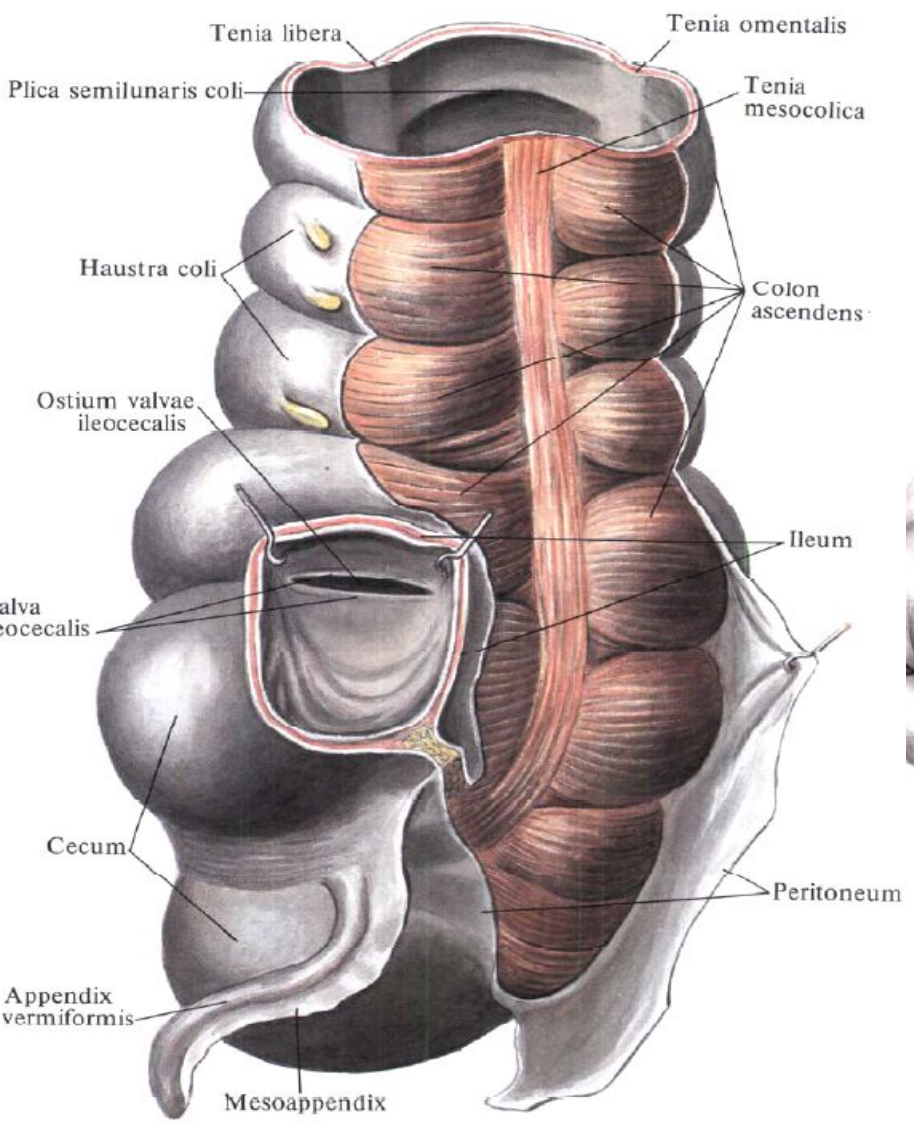


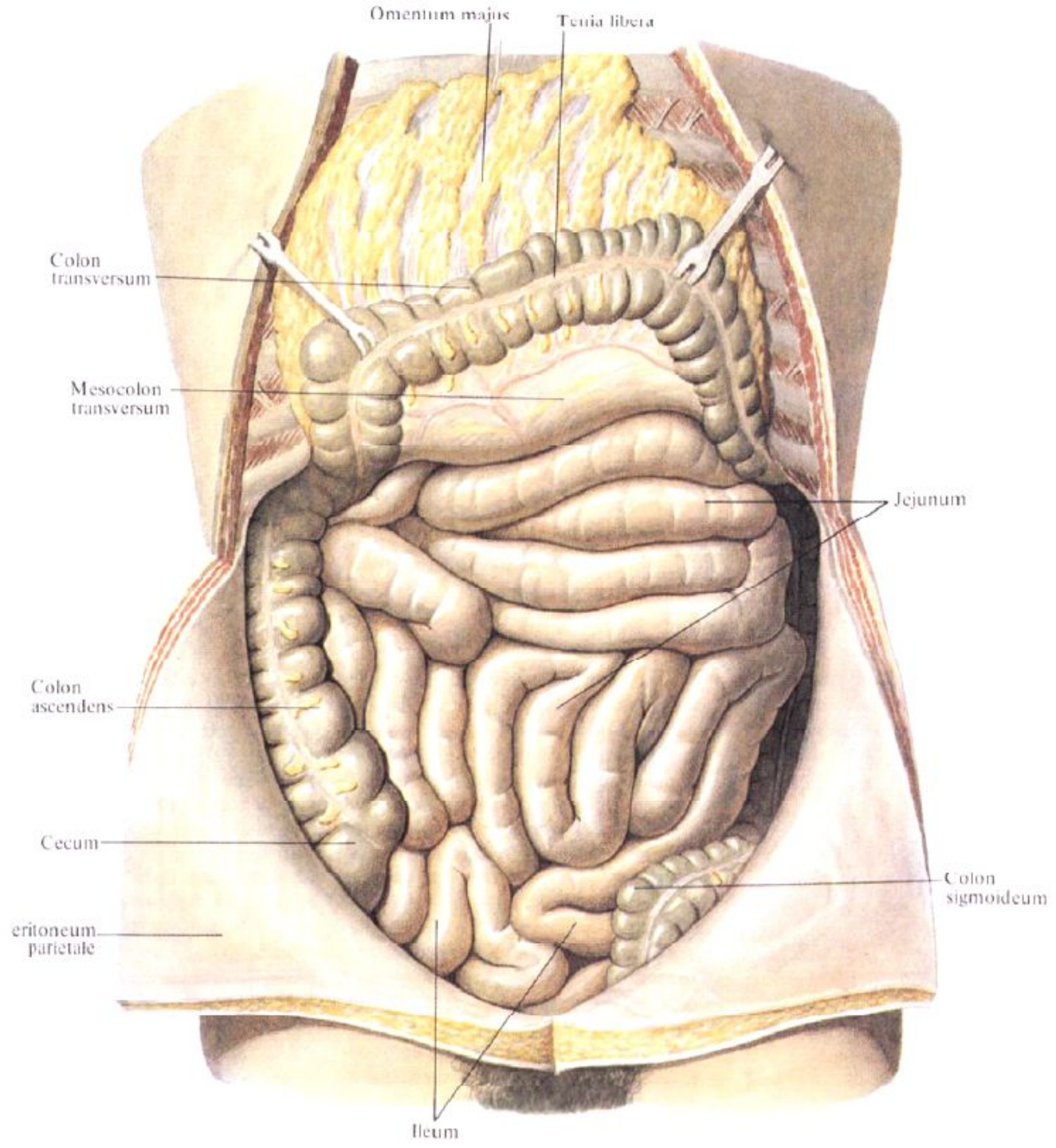






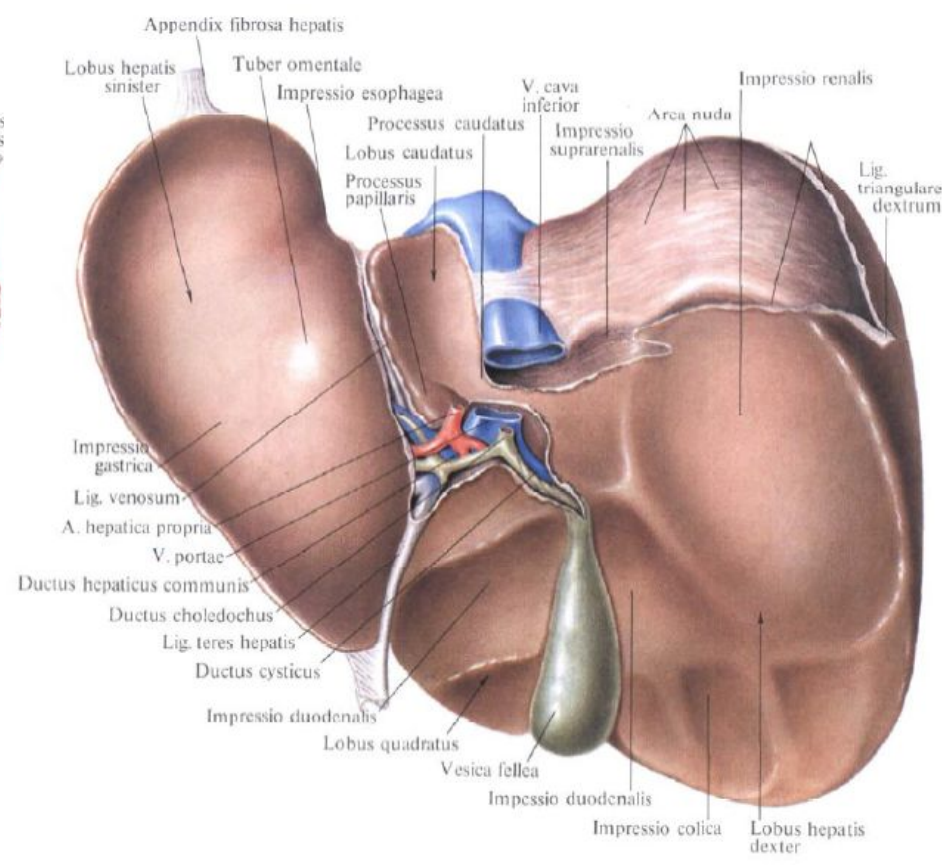
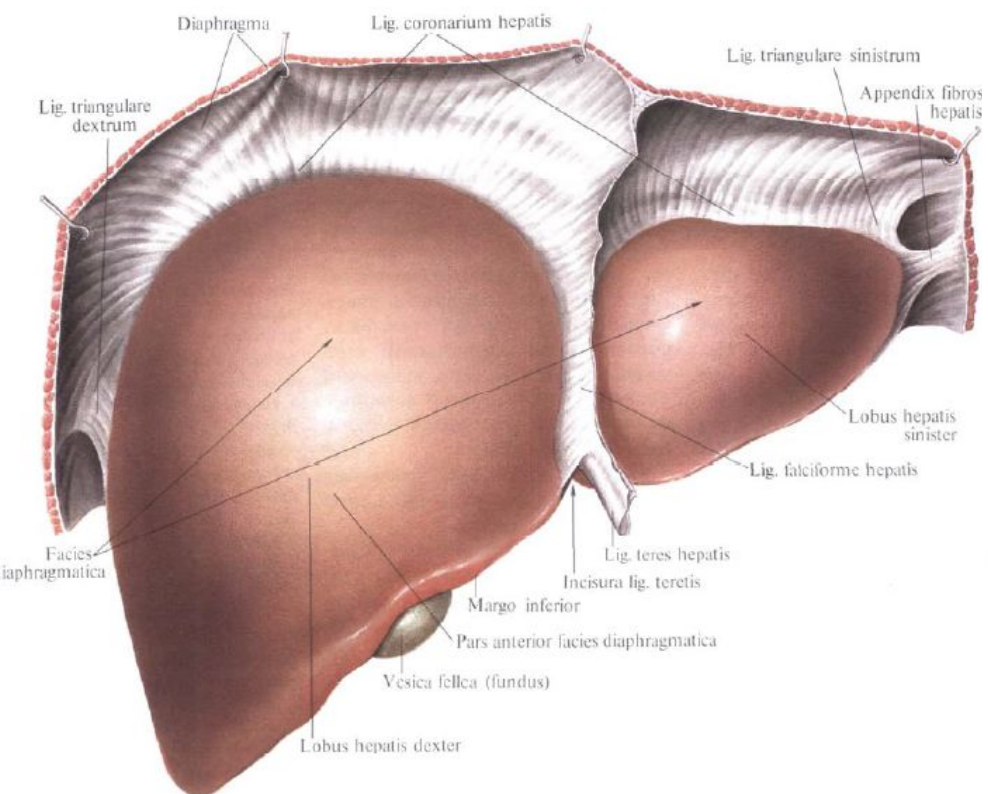


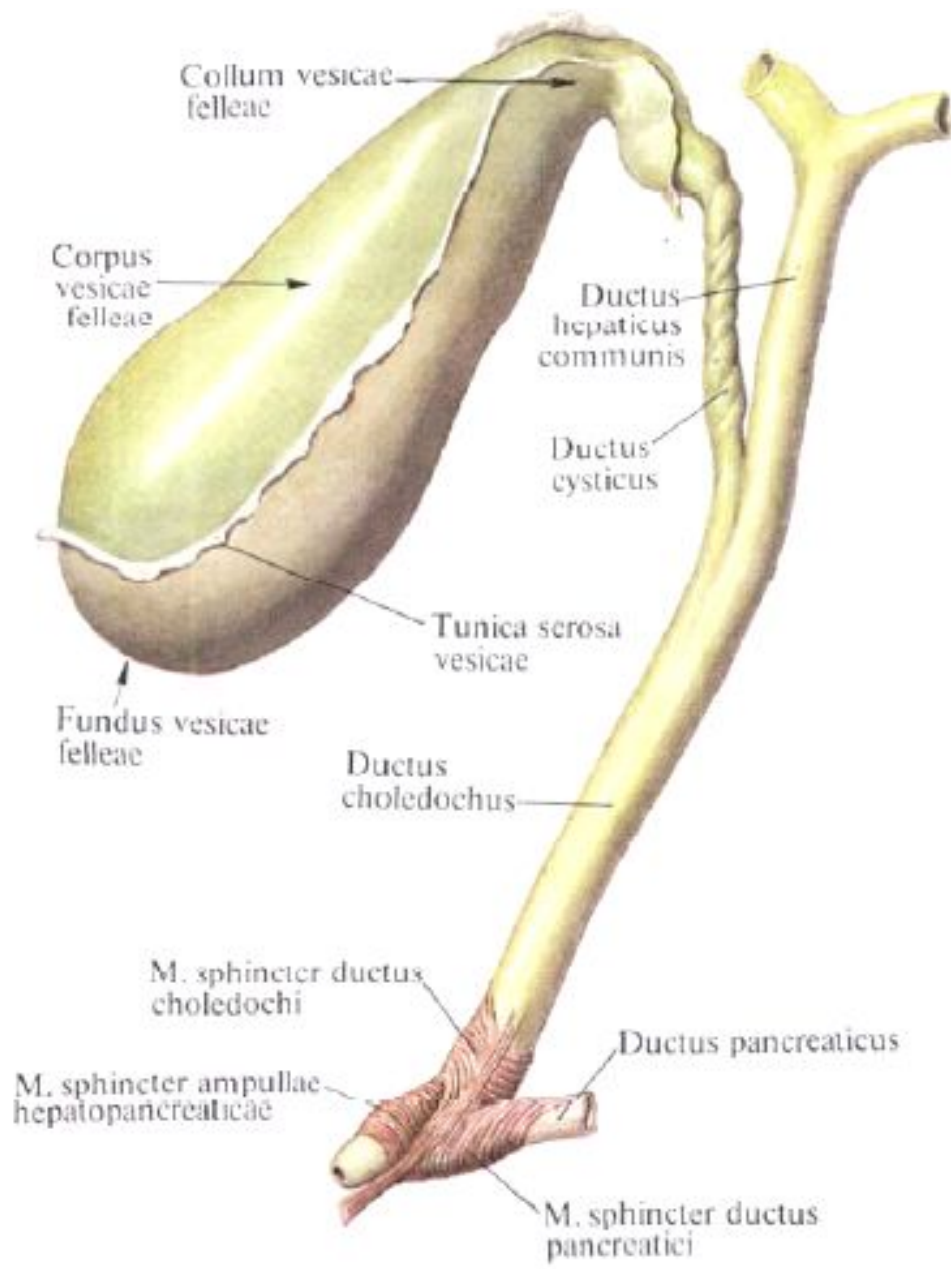


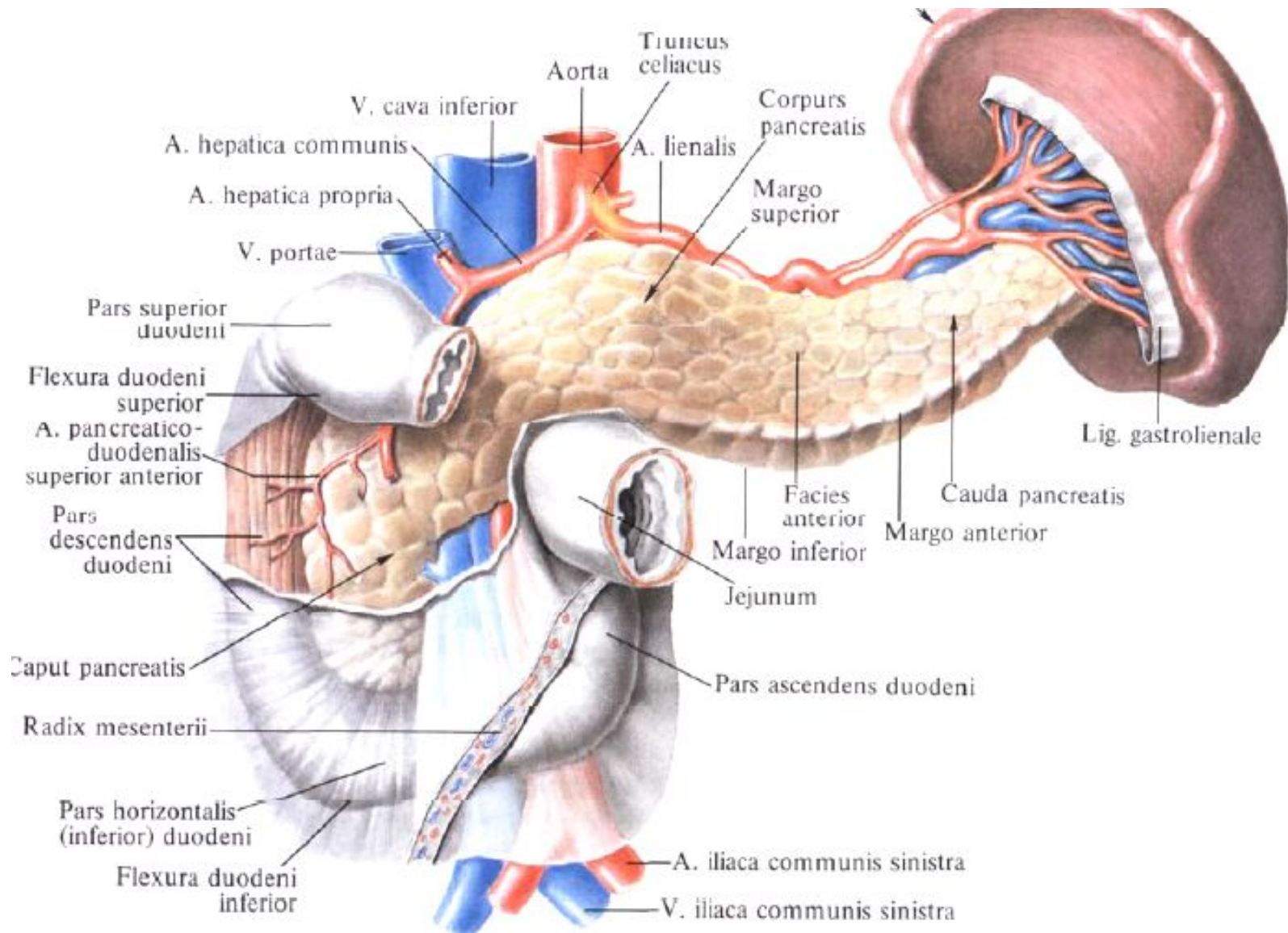


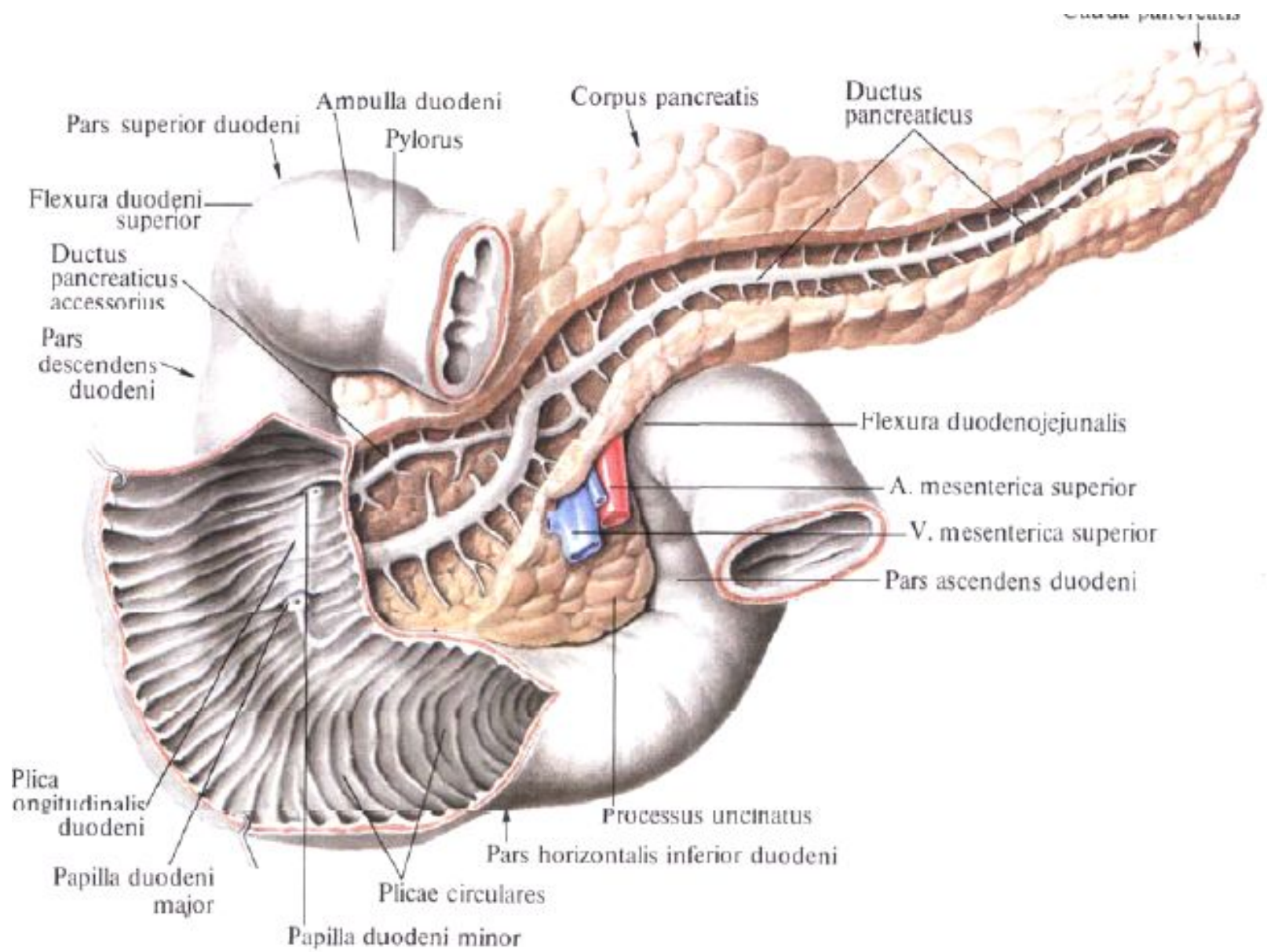
Занятие №5

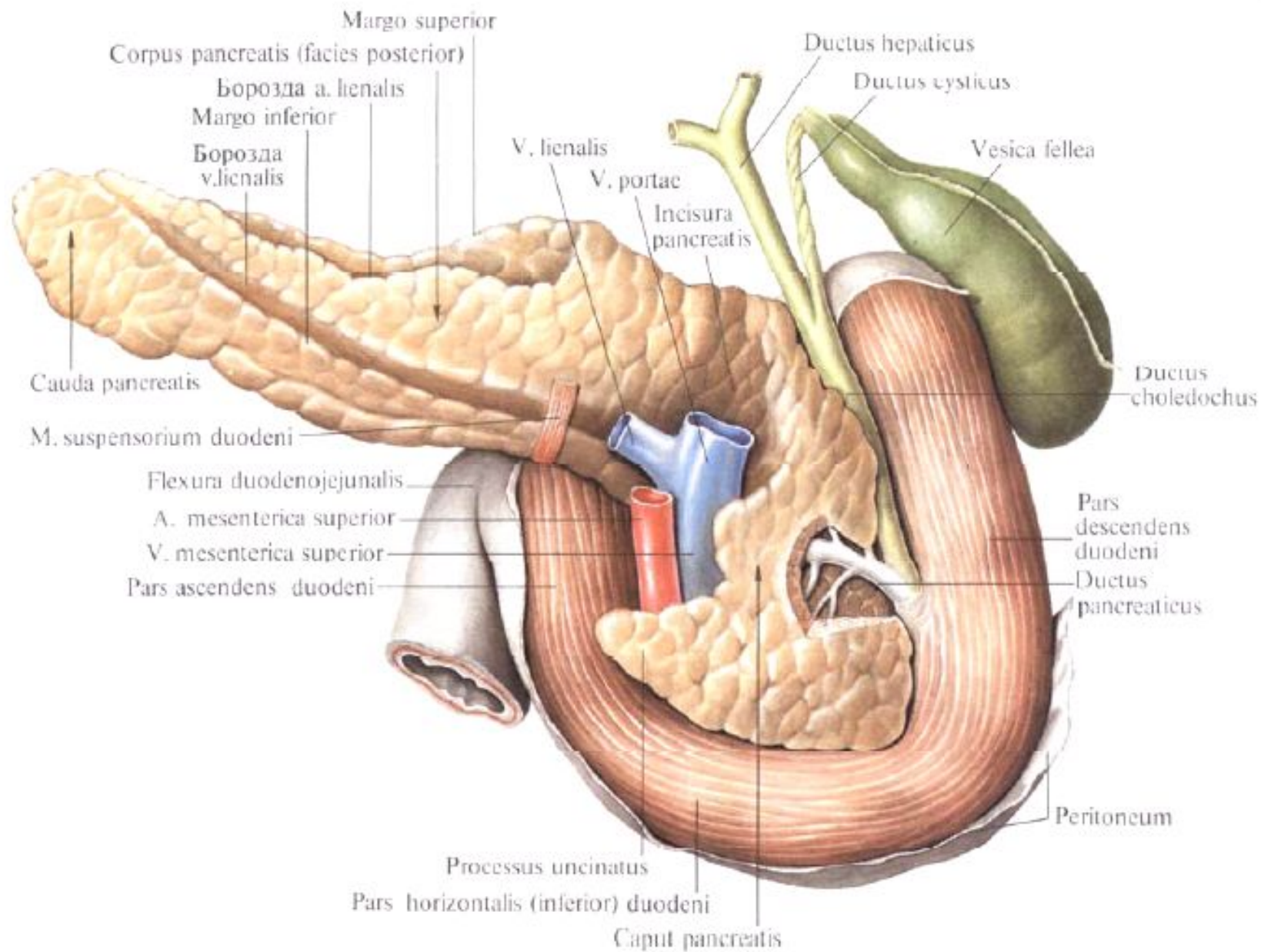
Функциональная анатомия печени и
поджелудочной железы.





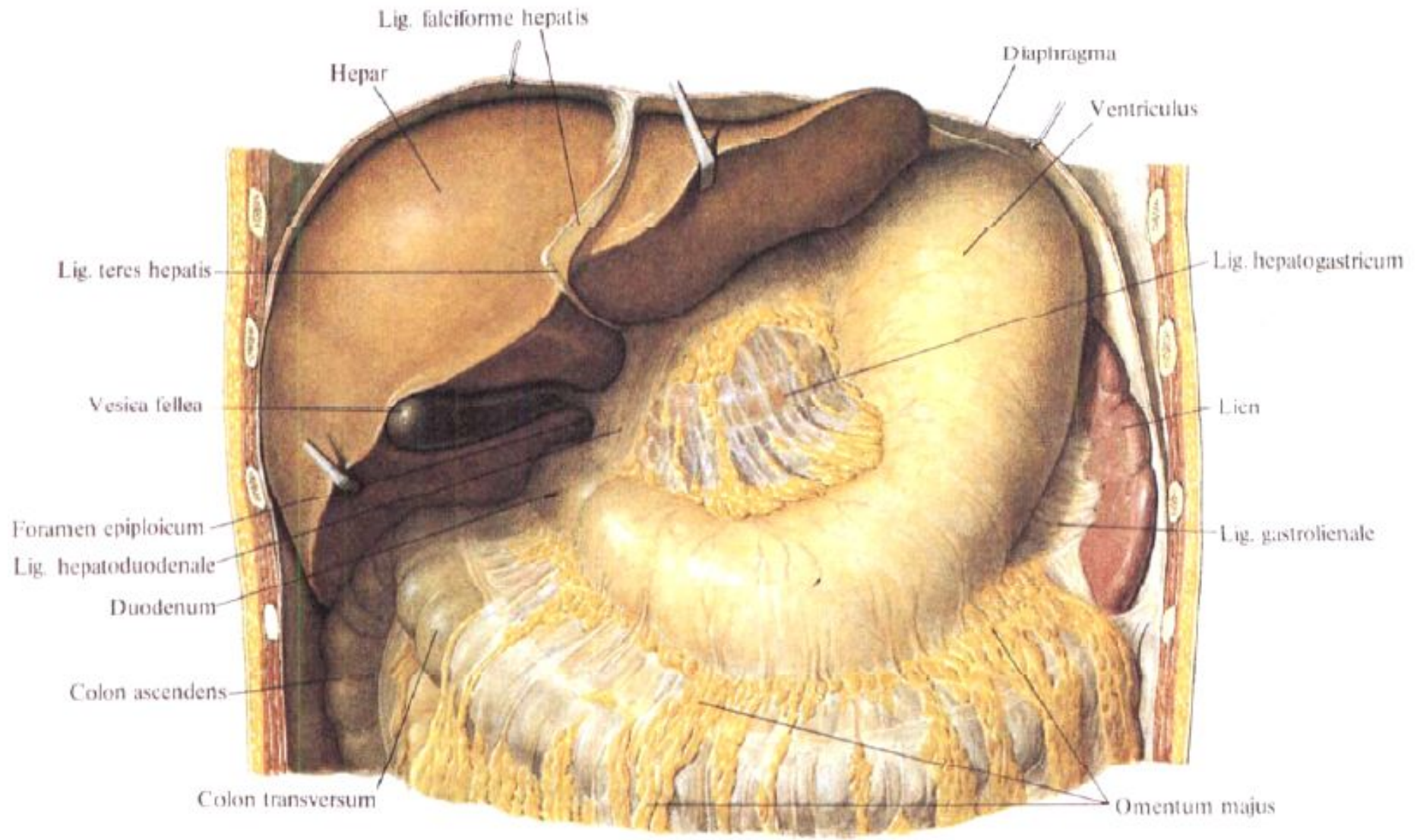


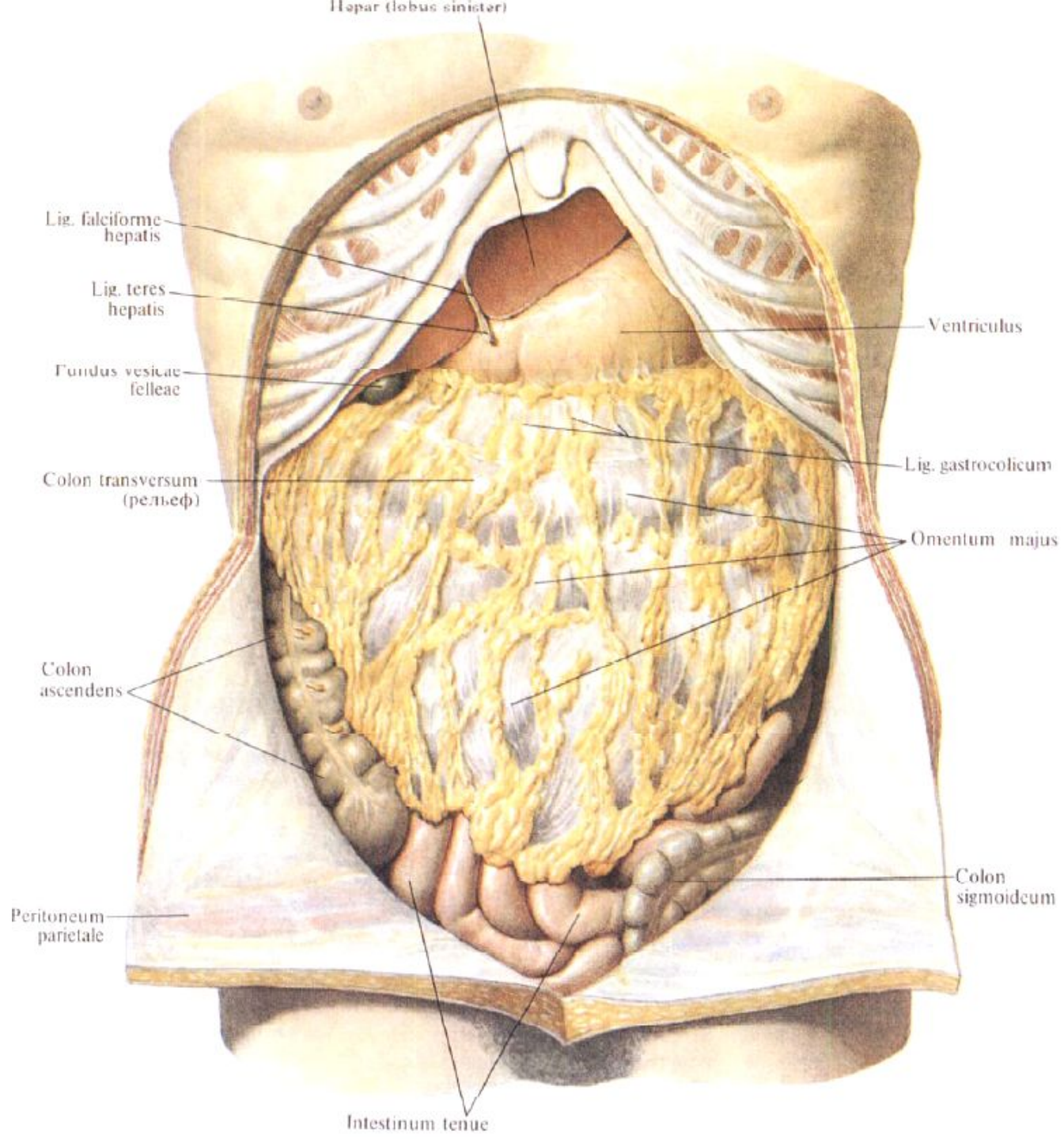




Занятие №6

Брюшина. Производные брюшины.
Топография брюшины верхнего этажа
брюшной полости.





Занятие №7

Топография брюшины среднего и нижнего этажа брюшной полости.

