

Human-Environmental Interaction

BALAN GOVARTHAN LA-1 201(2)

Adaptation



- What does it mean to “adapt” to something?
- Humans must adapt to the climate, landforms, vegetation, and natural resources that are around them.

Use your Adaptation graphic organizer

Bodies of Water



- The environment affects people's choice of food, shelter, clothing, and general way of life.
- Fresh water is essential to human life.
- How does this affect where people choose to live?

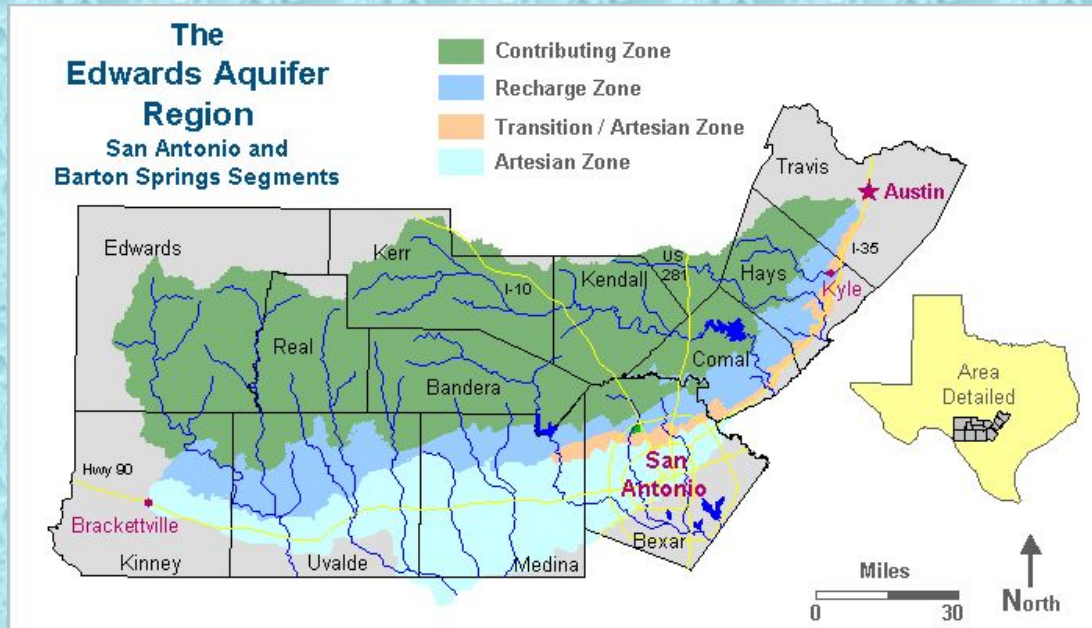
How has the Nile River affected life in Egypt?





What bodies of water
do we have around
us?

Where does our fresh
water come from?





ISLAND

Landforms



Desert

- People are affected by landforms. Where would you live?



Valley



Mountains



Volcano



How do you think
the land affects
the way the
Berbers live in
North Africa?

How did this
land affect
how the Incas
lived?



Climate



- How do you think this climate affects how people live?



Food?

Shelter?

Clothing?

Plants?

Plant & Animal Life

- Types of vegetation and animals in an area affect human lifestyles.
- Plants and animals are sources of food, clothing, and building materials.



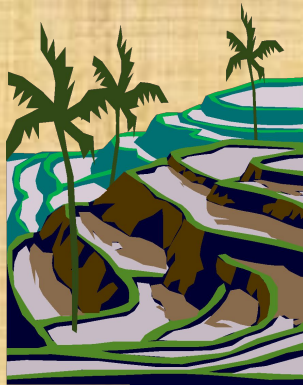
Modification

- People “modify” their environment.
- Culture and technology often influence how people modify nature.
- Why do you think that is?

Agriculture



- **Agriculture** is farming, or the growing of food.
- Many civilizations clear land to cultivate crops and **irrigate** fields to increase food production.



Agriculture



- How have we used technology to do this?



Agriculture



- How does culture affect what foods we grow?





Urban Growth

- People modify nature by building towns and cities.
- **Urbanization:** concentration of people from rural (country) to urban (city) areas



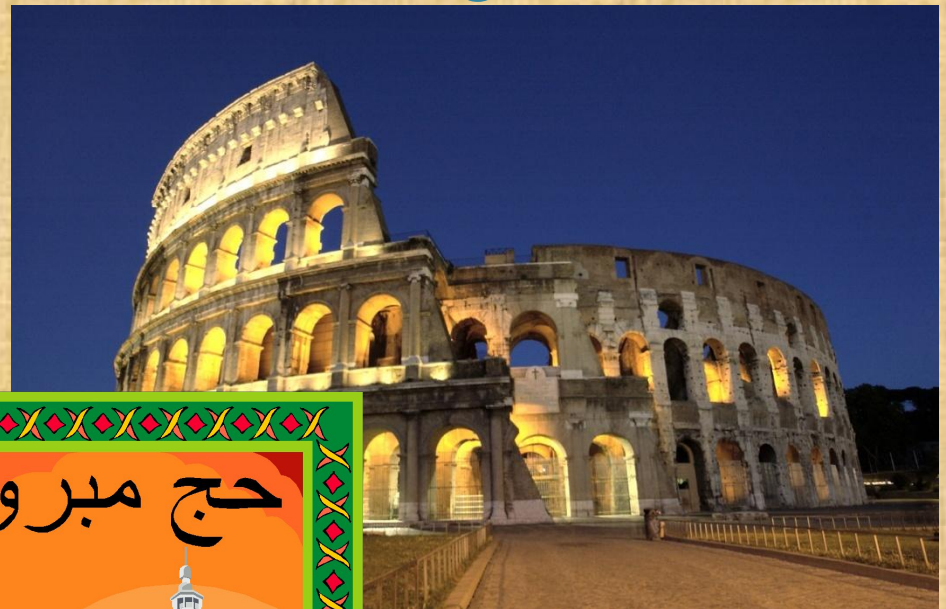


"Satellite Photo of Earth at Night." *Geology.com*. Web. 29 Apr 2011.
<<http://geology.com/articles/satellite-photo-earth-at-night.shtml>>.



Urban Growth

- How does culture affect urban growth?



The Building of Dams

- People construct dams to:
 - Drain swamps
 - Prevent floods
 - Store water for drinking and irrigation
 - Generate electric power





Aswan Dam

- Captures the Nile River in the world's 3rd largest reservoir, Lake Nasser.
- Before it was built, the Nile overflowed once a year and deposited nutrient-rich silt on the valley floor, making Egypt's otherwise dry land fertile.
- Purpose: flood control, hydroelectric power, irrigation

Three Gorges Dam

- The world's largest hydroelectric dam
- Purpose: flood control, hydroelectric power, irrigation, navigation
- Located in China on the Yangtze River
- More than one million people had to move.
- The reservoir submerged villages, ancient temples, and burial grounds.



"Three Gorges Dam." *Wikipedia*. Web. 29 Apr 2011.
<<http://en.wikipedia.org/wiki/File:ThreeGorgesDam-China2009.jpg>>.

Energy



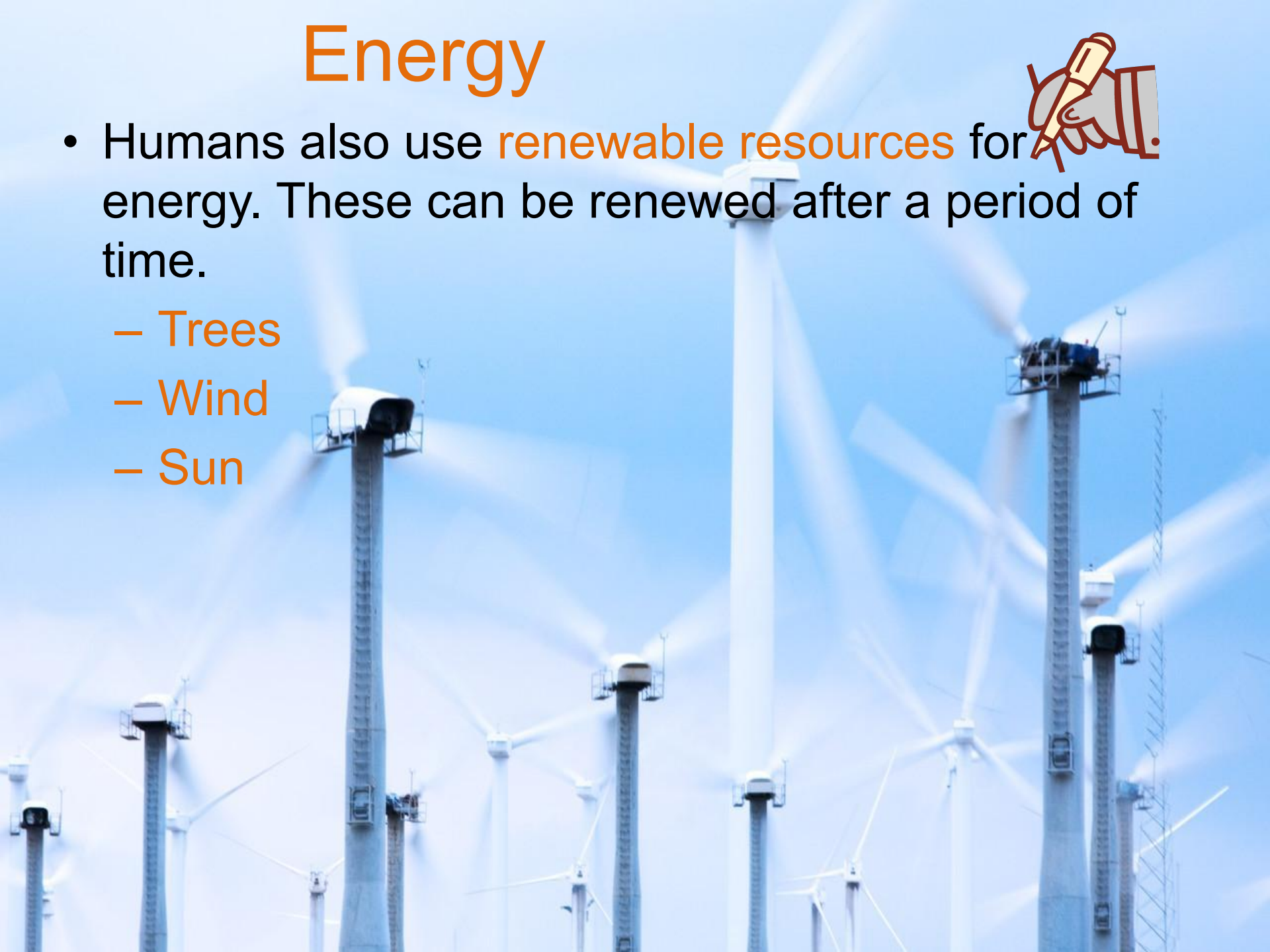
- Humans modify the environment to produce energy for their needs.
- Humans burn coal, whale oil, and forms of petroleum for light, heat, and power.

Energy



- Humans also use **renewable resources** for energy. These can be renewed after a period of time.

- **Trees**
- **Wind**
- **Sun**



- **Complete Negative and Positive Effects of Modification Graphic Organizer**

-

-

Thank you