

XCUTE 125

Think New

ERRC *Eliminate, Reduce,
Raise, Create*

2006.05.27

SVC Application Guide PDP TV-H2 series, fitted with 42V7 Module

Contents

- 1 Outline & Guide
- 2 Replacement List

- * Attachment
 - #1 Construction / Layout of V7 Plasma Module
 - #2 Board Identification

Issue

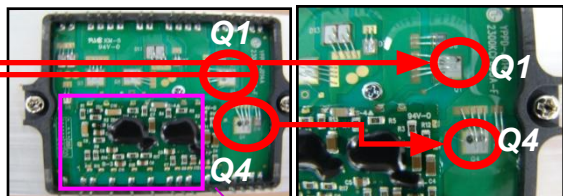
Field SVC Guide

General

- ◆ Applicable Models : All H2 series PDP-TV with 42V7 Module Fitted 42PX1RV, 42PX2RV*, 42PX3RV*, 42PX4RV*, 42PX4MV*, 42PM3MV*
* Others:##-42PX40 Series, RZ-42PX30
- ◆ Symptom : No Picture & Audio Sound OK

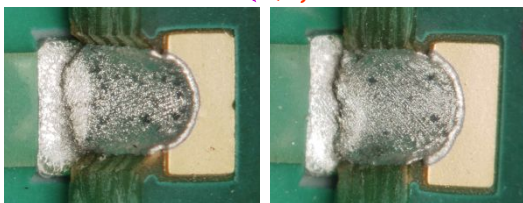
Cause

- IPM Failure on Y-SUS Board of V7 PDP Module
- Q1, Q4 Dead



> Solder Crack

Burnt stain in Q1,4



SVC Guide

- ◆ Market : Global (PAL BG/I/DK, SECAM L/L', NTSC, PAL M/N)
- ◆ When a PCB fitted to the PDP module fails (CTRL, YDRVTP, YDRVBT, XRLBT, XRRBT, YSUS, ZSUS) please only use the replacement part number according to the list.
- ◆ Especially when Y-SUS Board fitted to the Y-SUS Board fails please use the repair kit to change Y-SUS, Z-SUS and Control Board all together according to the list.

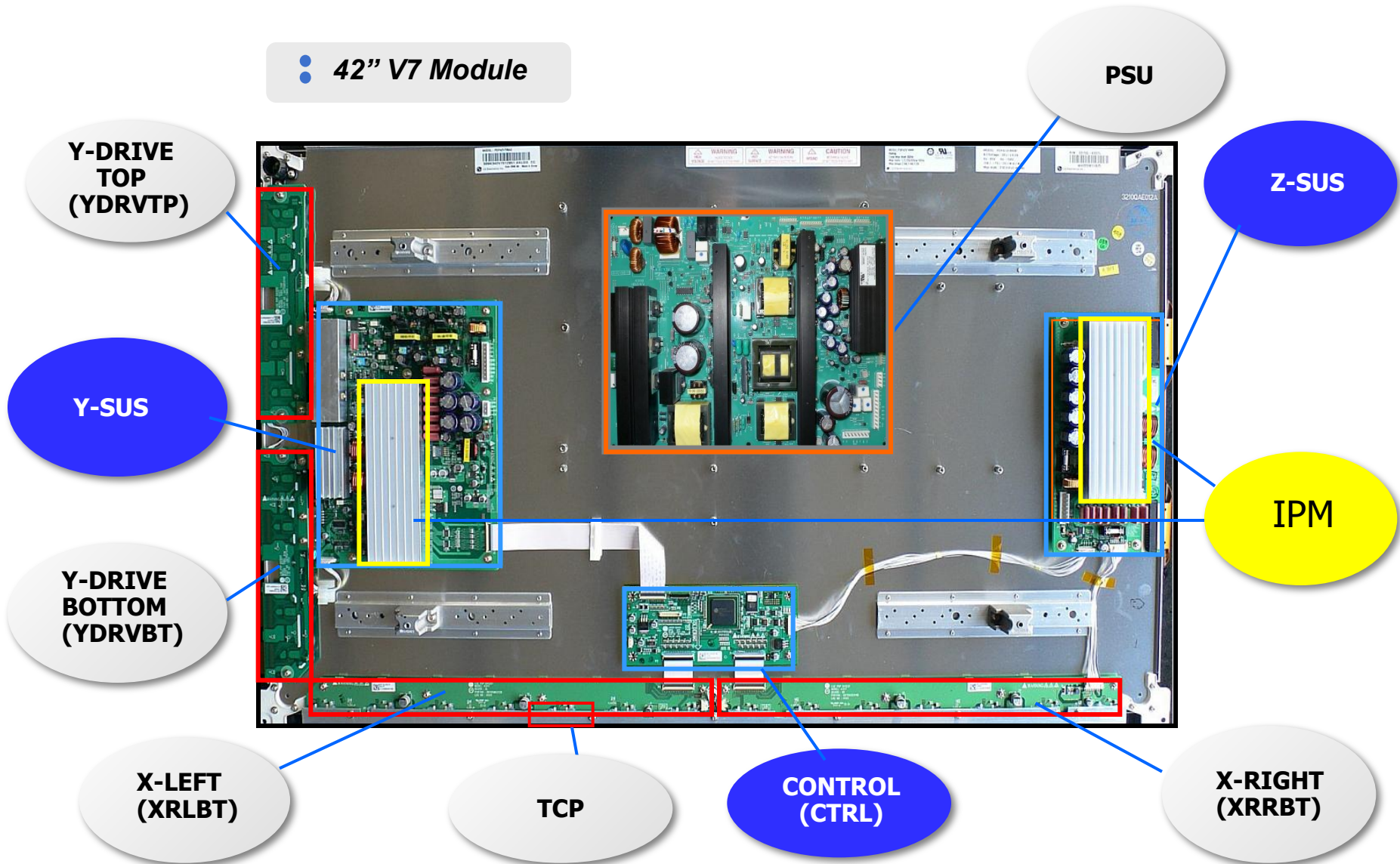
NOTE:

- Currently there is stock of Y-SUS Board in spares.
- After exhausting this stock please order or use the Repair kit for repair.

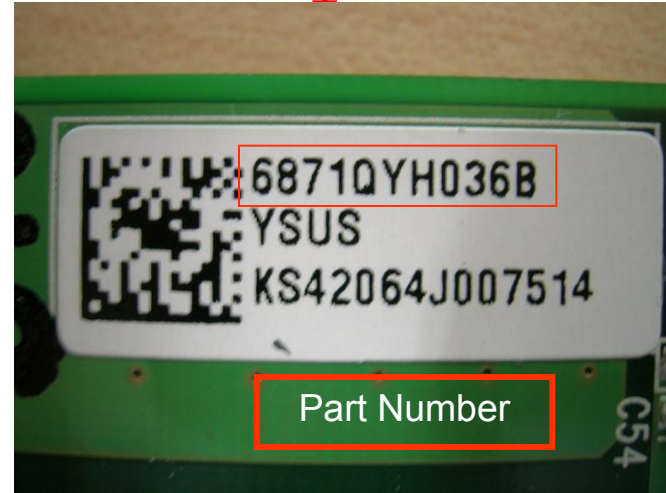
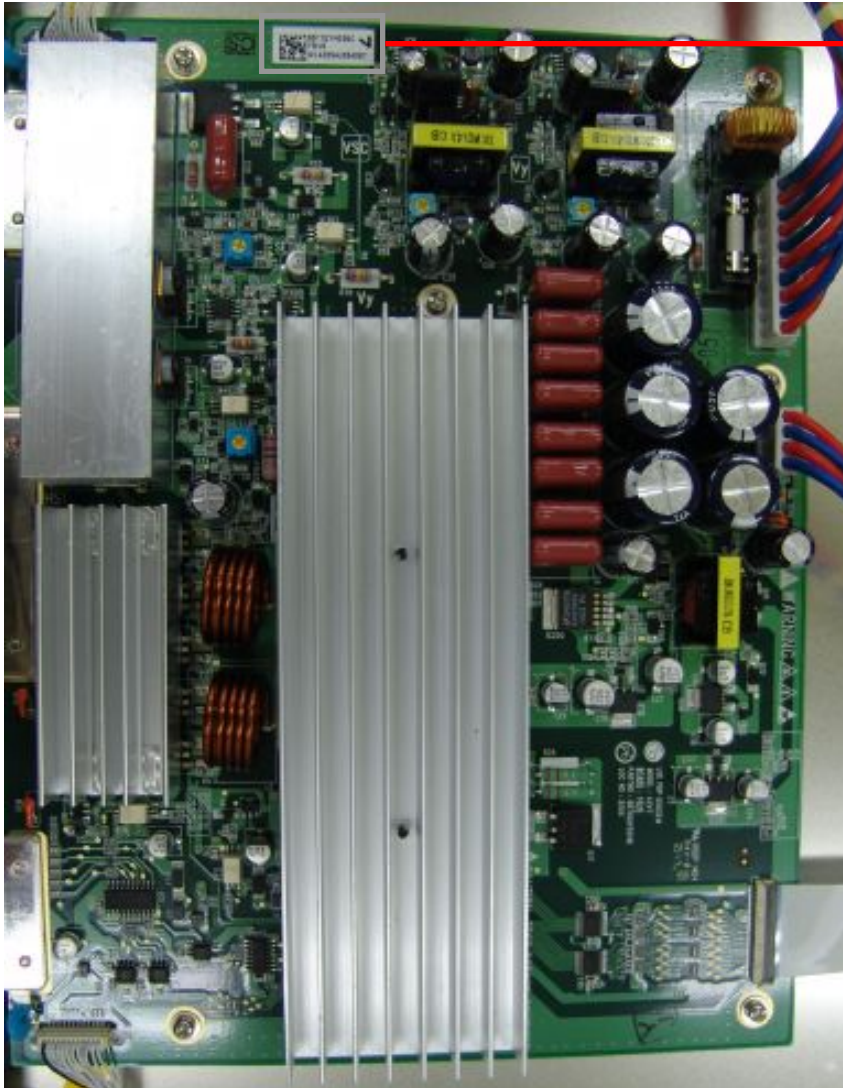


Board Type	Original part no	Replacement Part Number	Y-SUS Failure repair Kit
CTRL	6871QCH053A	6871QCH053F	<p>6871VSNB03E (Kit Part number)</p> <p>* Kit Part consists of CTRL, Y-SUS and Z-SUS</p> <ul style="list-style-type: none"> •CTRL : 6871QCH053G •Y-SUS : 6871QYH036D •Z-SUS : 6871QZH041B
	6871QCH053E		
	6871QCH053F		
	6871QCH053G	6871QCH053G	
Y-SUS	6871QYH036A	Kit Part Number 6871VSNB03E	
	6871QYH036B		
	6871QYH036C		
	6871QYH036D		
Z-SUS	6871QZH041A	6871QZH041A	
	6871QZH041B	6871QZH041B	
YDRVTP	6871QDH084A	6871QDH084A	
YDRVBT	6871QDH085A	6871QDH085A	
XRLBT	6871QLH047A	6871QLH047B	Not Supplied in Kit
	6871QLH047B		
	6871QLH047D		
XRRBT	6871QRH055A	6871QRH055B	
	6871QRH055B		
	6871QRH055D		

• 42" V7 Module

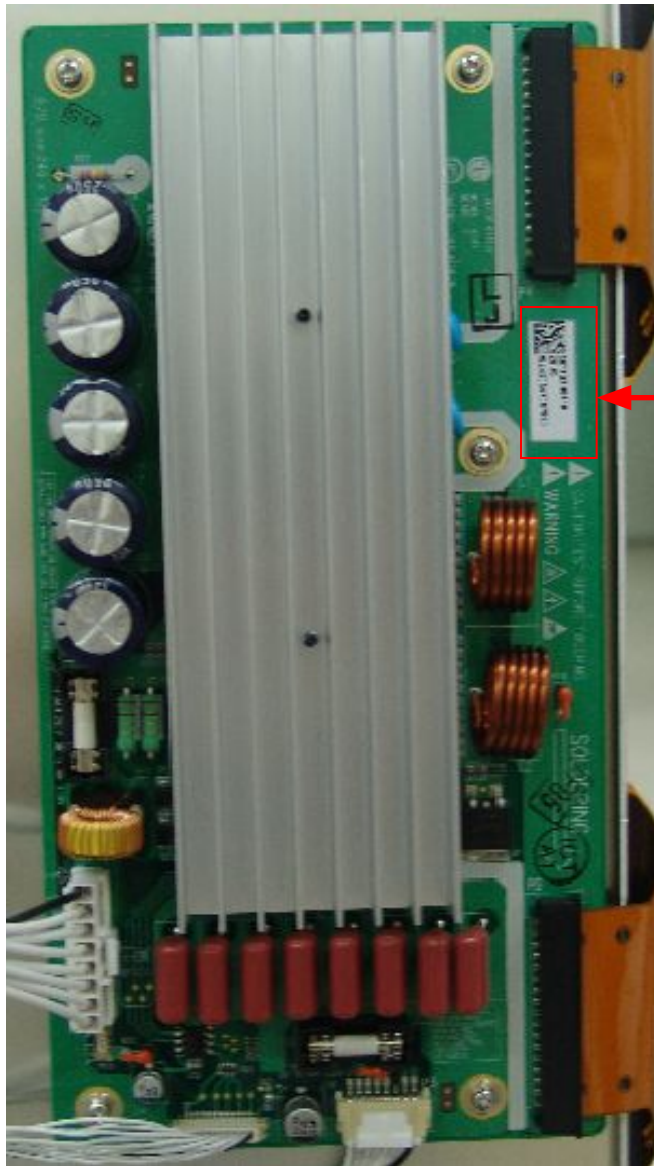


PDP42V7 Y-SUS Board



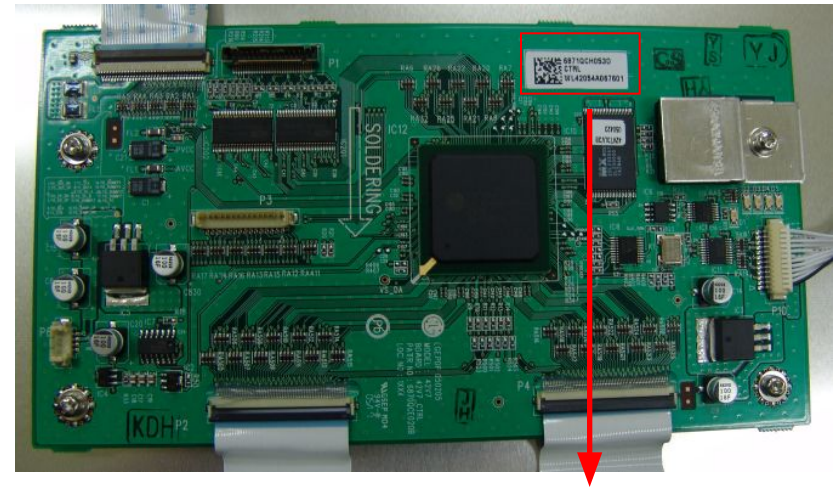
Y-SUS Board Label

PDP42V7 Z-SUS Board



Board Label

PDP42V7 CTRL Board



Board Label