

Saint-Petersburg State University
Corelis master program

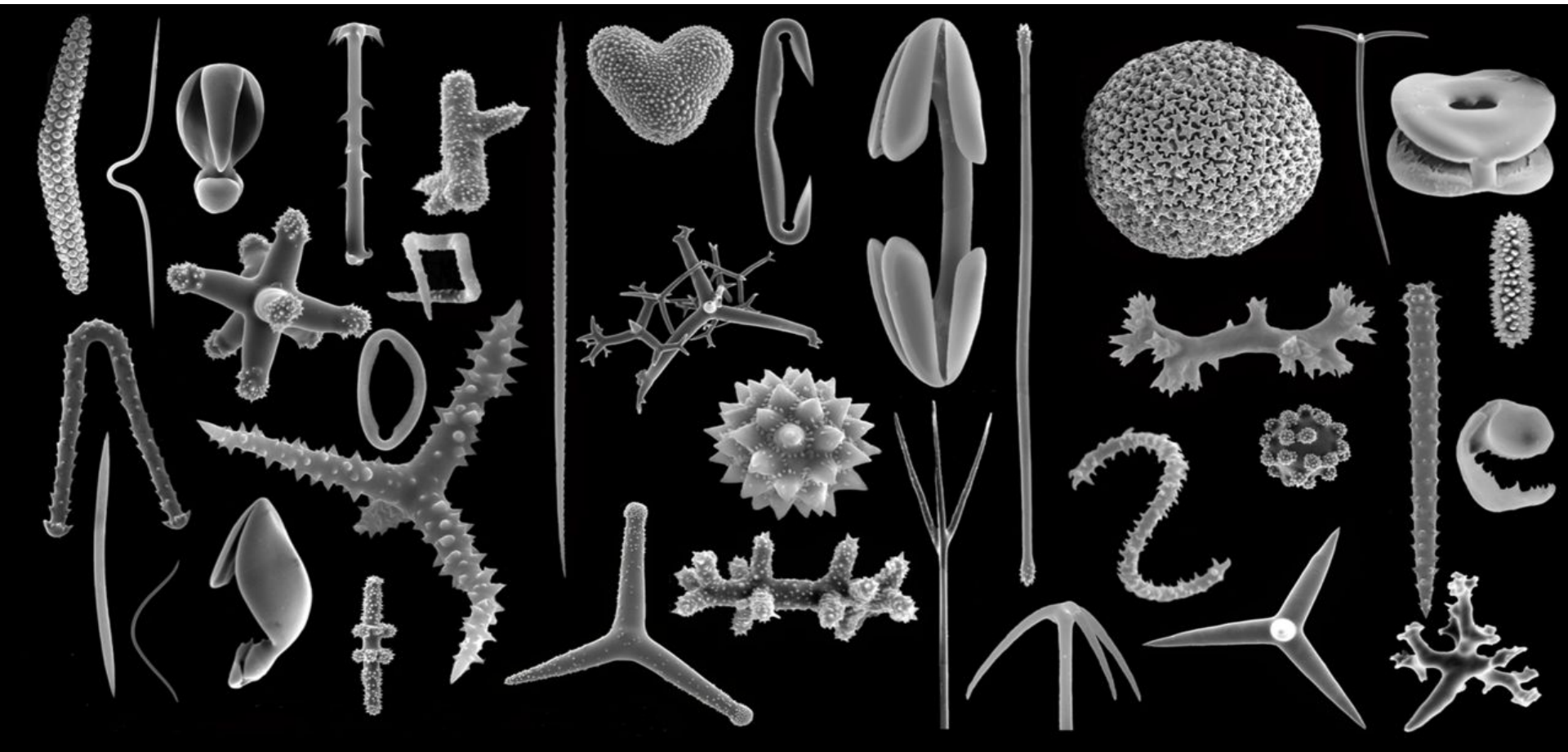
Sponge spicules

**1st year master student
Lopacheva Natalia**

**Saint-Petersburg
2018**

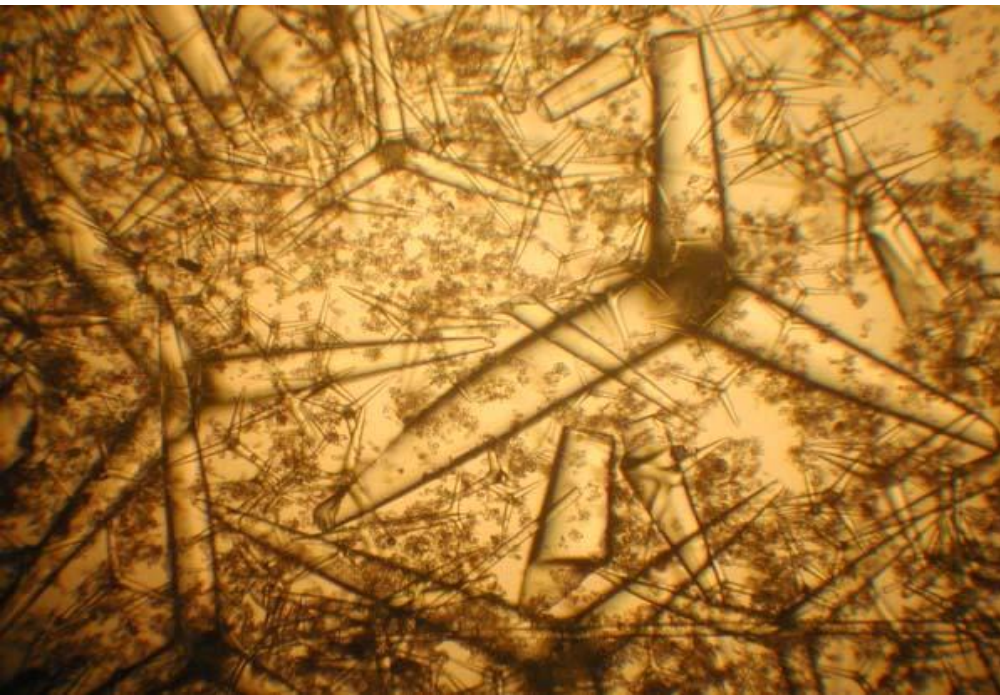
Sponge spicules

- Mineral elements of the skeleton that perform the support function and keep the initial form of the sponge body.



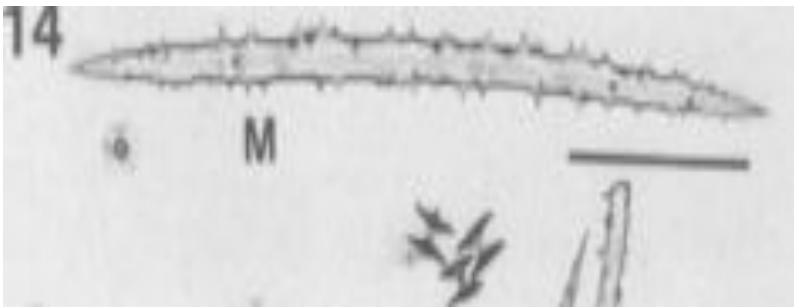
Structure

- The skeletons of freshwater sponges are comprised of siliceous structures termed spicules. These spicules are well preserved in most sedimentary environments.

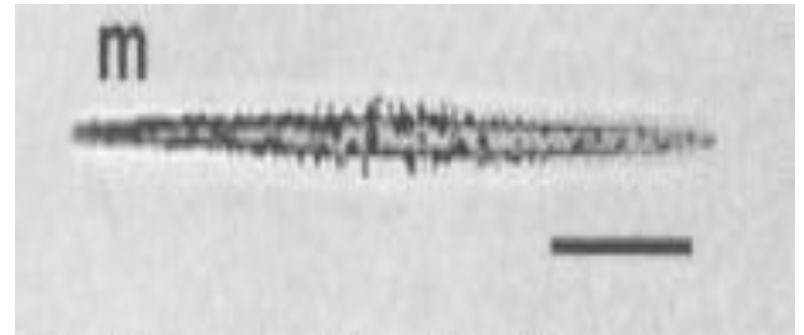


Types of spicules

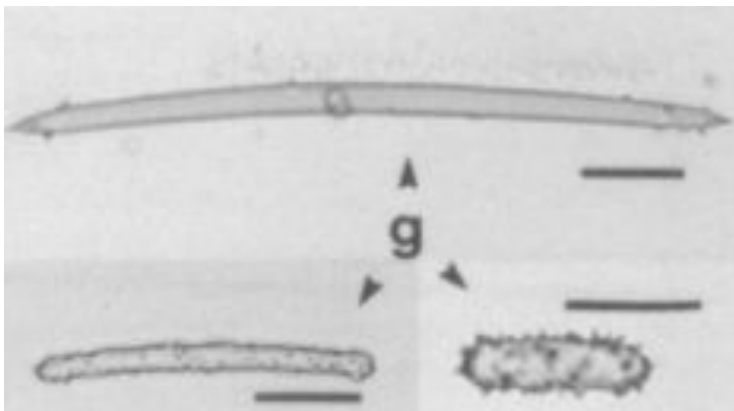
Megascleres



Microscleres



Gemmoscleres

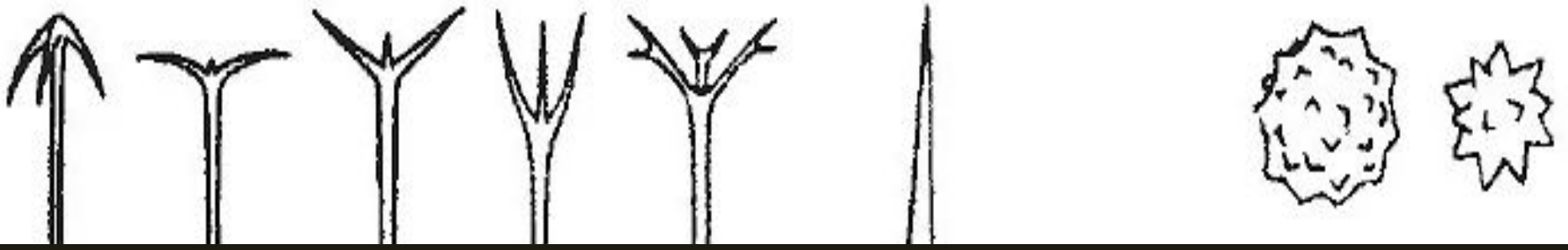


Time range

- **The earliest** specimens belong to **Cambrian**, while their prime is estimated to continue from Ordovician period to Silurian period. Decline in development started in Devonian and continued until Triassic. Next expansion belongs to Jurassic and cretaceous periods.

Natural habitat characteristics

- **Nowadays** most of the sponges are **marine** inhabitants. Corneruspongias are also found in freshwater, although not exclusively.



Thank you for your attention!

