

Assembly-

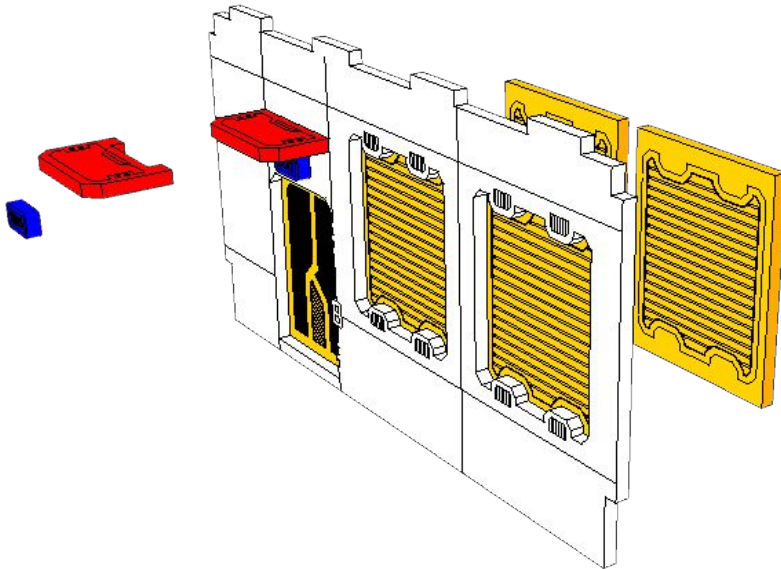
MDF and card are best assembled using PVA/white/tacky craft glue.
Superglue will soak into the MDF and card and not adhere well

Painting –

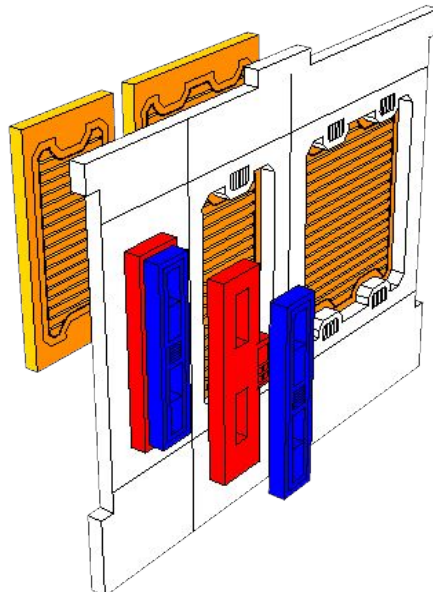
The MDF and card are best painted and we recommend:

1. Undercoat – Spray paint
2. First coat - Acrylic paint for background colour
3. Sealer – Gloss clear spray paint (this will help the painting in of the detail and protect the layers of paint below)
1. Detail highlight – Acrylic paint for text and figures
2. Topcoat - Matt or satin clear spray paint

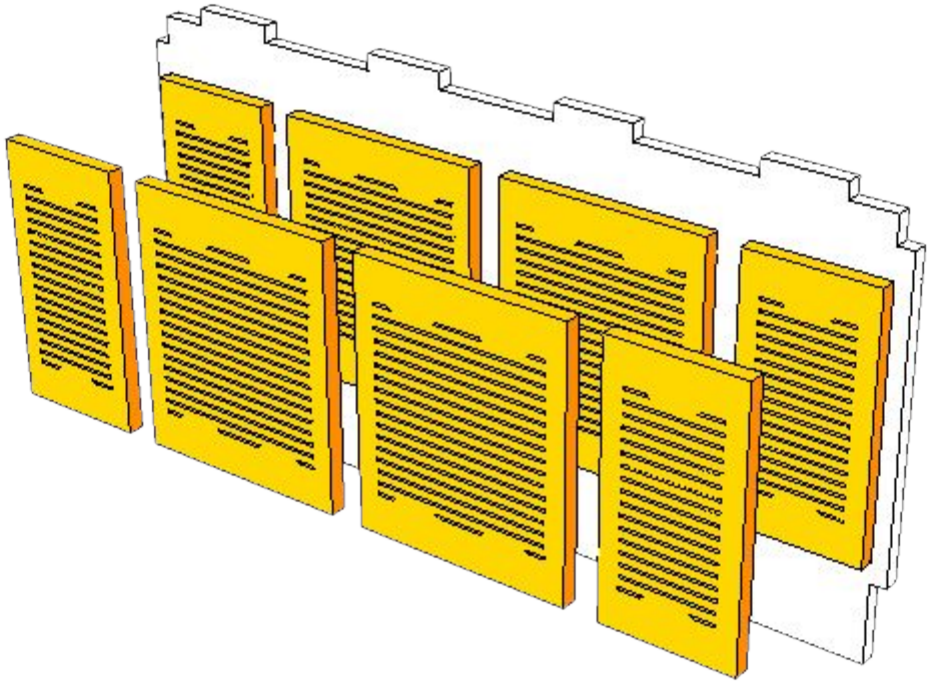
1



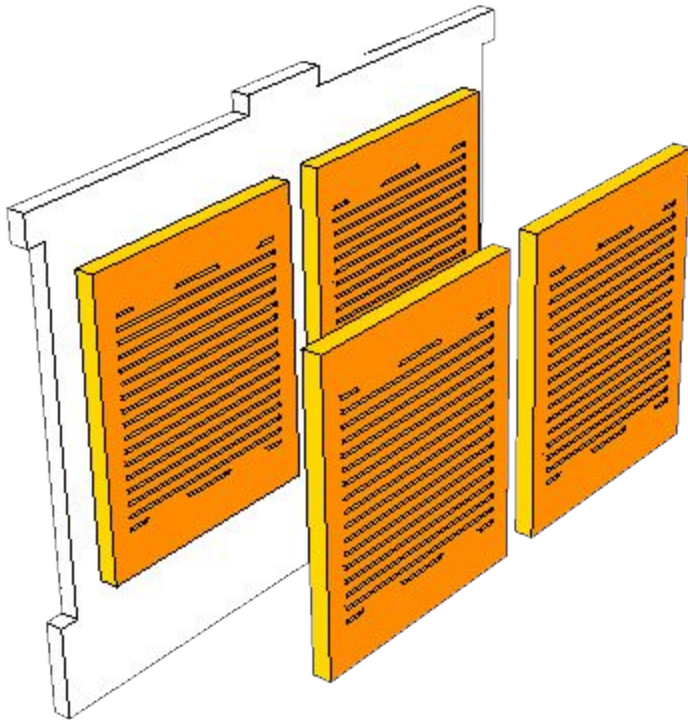
2



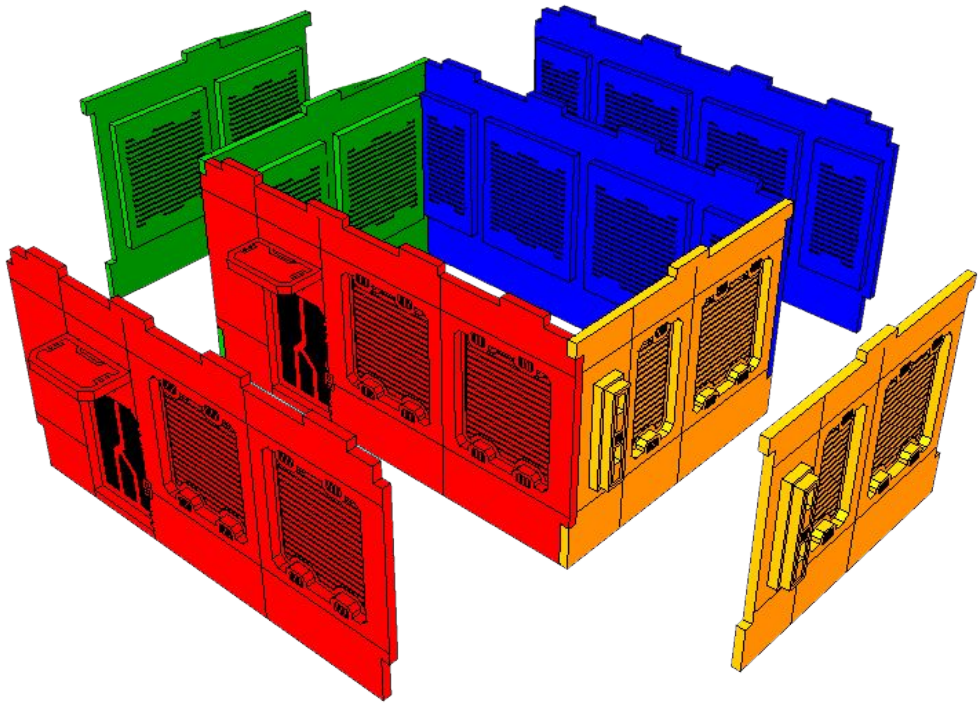
3



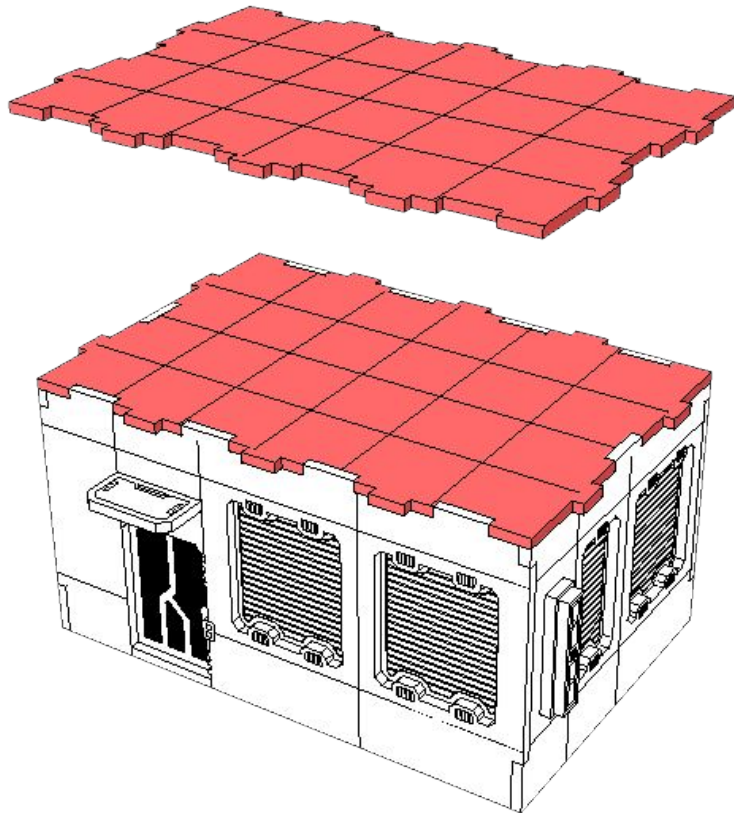
4



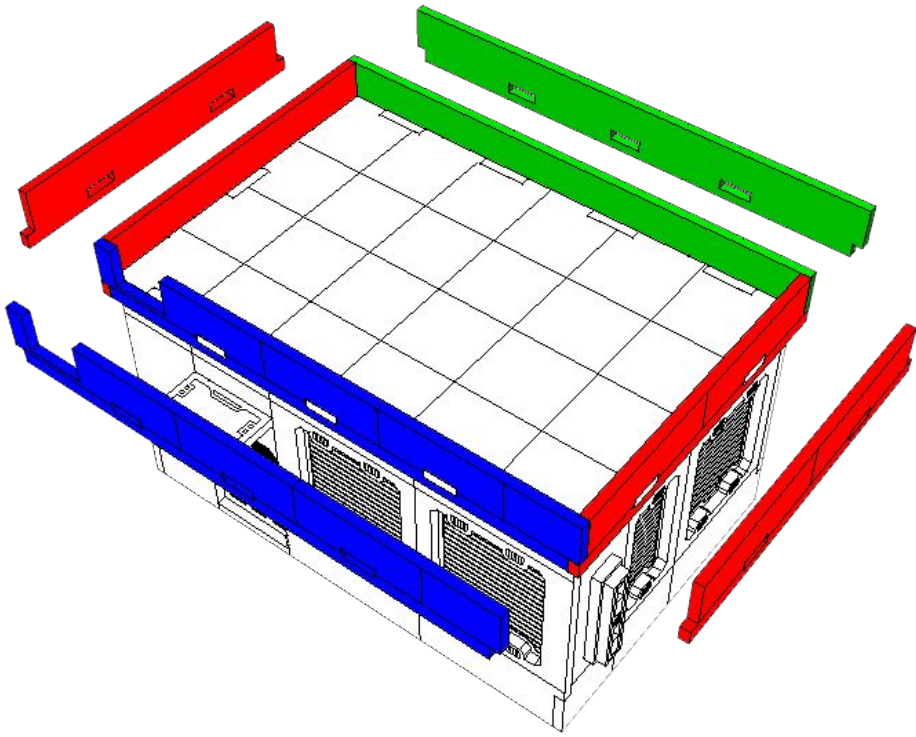
5



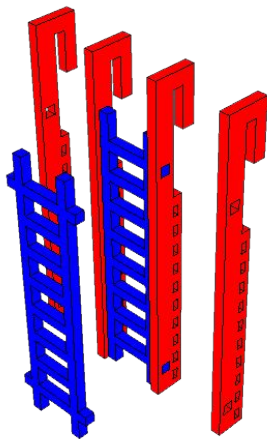
6



7



8



9

