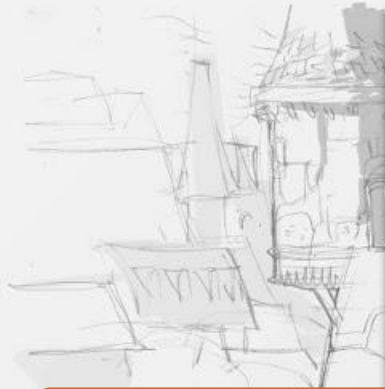


## CONNECT YOUR WALLET

You will need to connect your crypto wallet to play the game.

Several types of wallet will be available for connection.





## GAME INTERFACE

You will have several areas at your disposal in the start menu:

PORTFOLIO: Here you will be able to see in real time your portfolio with all the living farms

MARKET: Here you will sell and buy new equipments for your hero or items for crafting.

CRAFTS: Here you will be able to create your own equipment with items dropped during farming.

AGRICULTURE: Here you will choose in which farming do you want to defeat the monsters

	LVL	Investment	APR %	Kamas	Value in \$	Drops	
Sangoten	74	USDT-BNB 1350 \$	126	FIRO 132	1350 \$		HARVEST
Epsilon	71	ETH-BNB 200 000 \$	1 238	ETH 145	200 000 \$		HARVEST
Burd	64	ETH-DUNT 100 \$	3 587	DUNT 61	100 \$		HARVEST
Impro	68	BND					HARVEST
Lie	77	BUNNY 100 \$	28	JING 46	100 \$		HARVEST
Vivil	66	JING-USDC 250 \$	13 864	JING 38	250 \$		HARVEST
Player-Unknown	80	BUSD 20 \$	12	ULK 146	20 \$		HARVEST
Ineedmoney	74	POL-DUNT 120 \$	1 698	ZLC 12	120 \$		HARVEST





## MARKET

Purchase Sale

Search for an item

Categories



Levels

De 1 à 200

Primary characteristics

AP

Name	Category	Level	Average price
Bouze Lite Yeah's Ring	Ring	20	20,063 \$
Grithril Ring	Ring	200	----- \$
Red Piwi Ring	Ring	10	132 \$

Only display equipment currently on sale

## INVENTORY

All categories



Search in inventory

194,517 \$

Show items that can be sold.

## MARKET PLACE

During your fight against monsters, you will need a good equipment to defeat the final boss and be rewarded with dropped items.

On Market Place, you can buy your staff on from our server but also from other players.



**MARKET**

Purchase Sale

**Rhineetle Helmet (19982)**  
Lvl. 200

Batch price: 318 \$

Quantity: 1

Sale fee: 2% 6 \$

Average price: unavailable

**Put up for sale**

Search in the list

Name	Time left	Pack	Price
Gobball Hammer	670 H	1	10 \$
Bouze Lite Yeah's Ring	670 H	1	150 \$
Freezammer Amulet	672 H	1	37 \$
Rhineetle Amulet	672 H	1	319 \$
Stubbeard	672 H	1	12 \$
Grithril Ring	672 H	1	512 \$

6/466 selling slot(s) full 1,830 \$

**INVENTORY**

All categories

22,758,987,703 k

7,122 \$

Show items that can be sold.

## MARKET PLACE

As you fight monsters, the monsters drop different types of items.

You can sell all of these in the market or try to find the secret equipment recipes in the Crafting house.





## CRAFTING HOUSE

As you fight monsters, the monsters drop different types of items.

These items can be used to craft equipment or consumables. The more you craft, the more your level increases and the more ingredients you will be allowed to add to crafting.

But you will have to find the crafting of the items on your own and discover the secret recipes to craft unique equipment.

Once the recipes are found, they will be stored in your recipe wallet, but until then you will have to find them on your own.



## FARMING AREA

The main courtyard of MonsterFarm remain the Farming Area. Here you will be able to chose in which world you will enter to fight monsters.

You will have all the information for you to decide where you would like to invest and how much and the most important is how much you will earn during your fight.

The statistics are updated in real time and the APR is showed as base for your decision.

When you will enter in the fight you will be able to boost all this numbers with your skills, your heros and your equipment.

MonsterFarm will allow you to fight through different servers and different networks all this centralized from only one place.



	Deposit	APR	Liquidity	Available LP	Earned	Token Price	
	USDT-BUSD	135 %	\$3 350 756	\$1 200	BSW	\$14	Attack
	DOT-BNB	1 853 %	\$785 936	\$10	KSW	\$0.89	Attack
	ADA-BNB	3 564 %	\$5 936	\$0	JING	\$0.0004	Attack
	UST-BUSD	174 %	\$7 489 136	\$0	BSW	\$14	Attack
	ETH-USDT	151 %	\$14 706 077	\$0	BSW	\$14	Attack
	BNB-BTCB	1 510 %	\$13 619 255	\$0	sBDO	\$98	Attack
	CAKE-BNB	385 %	\$8 735 233	\$10 000	sBDO	\$98	Attack



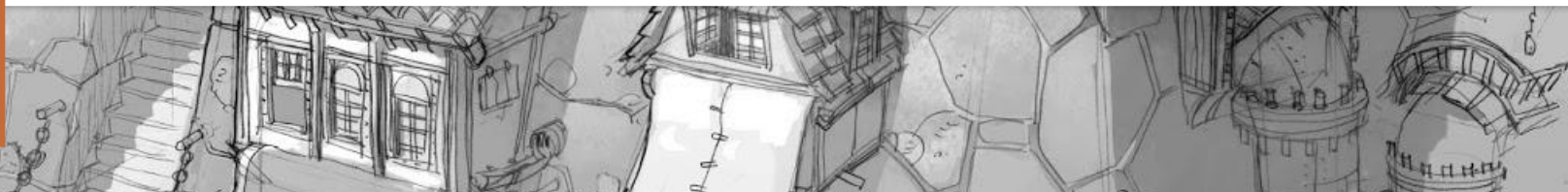
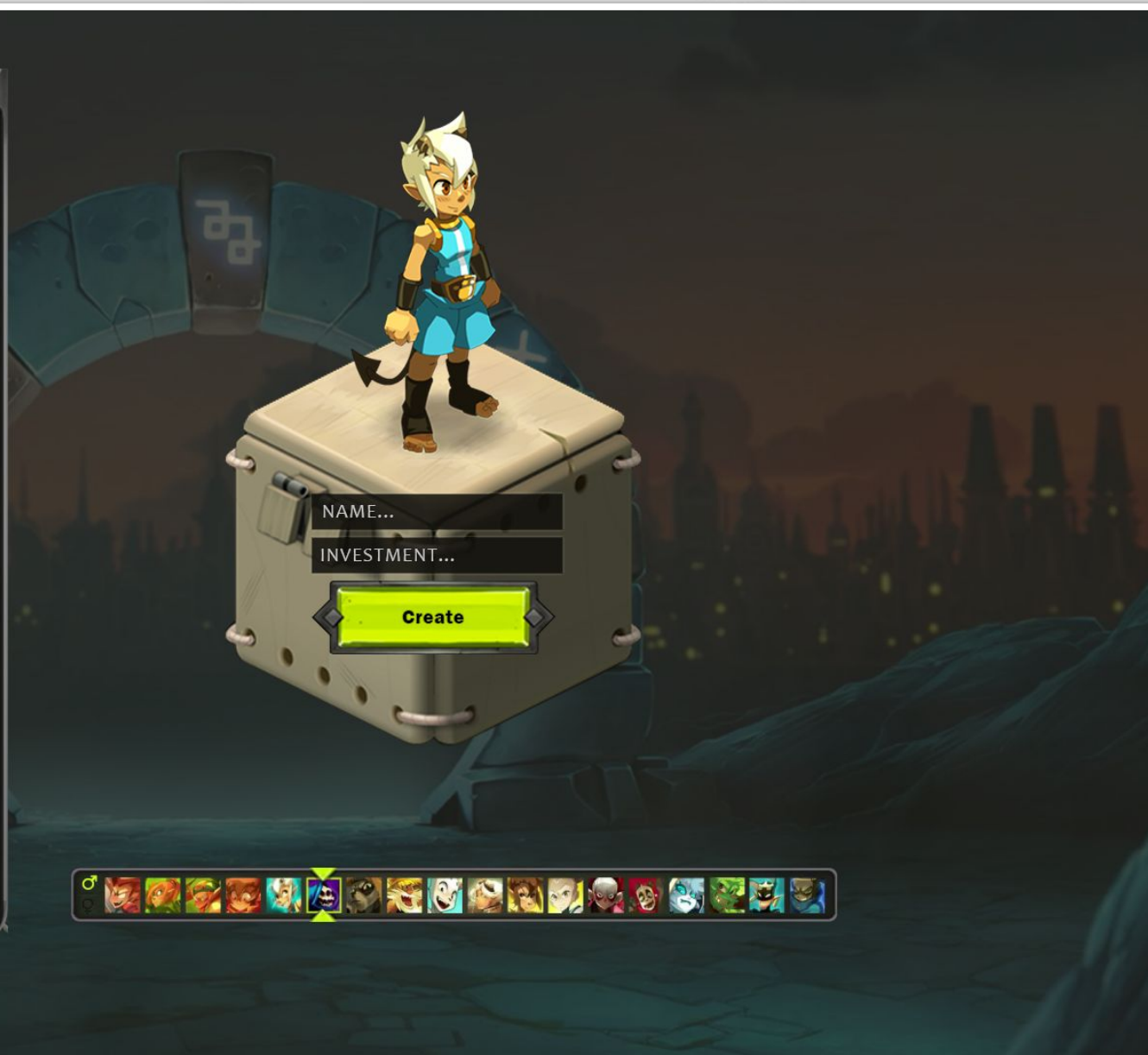
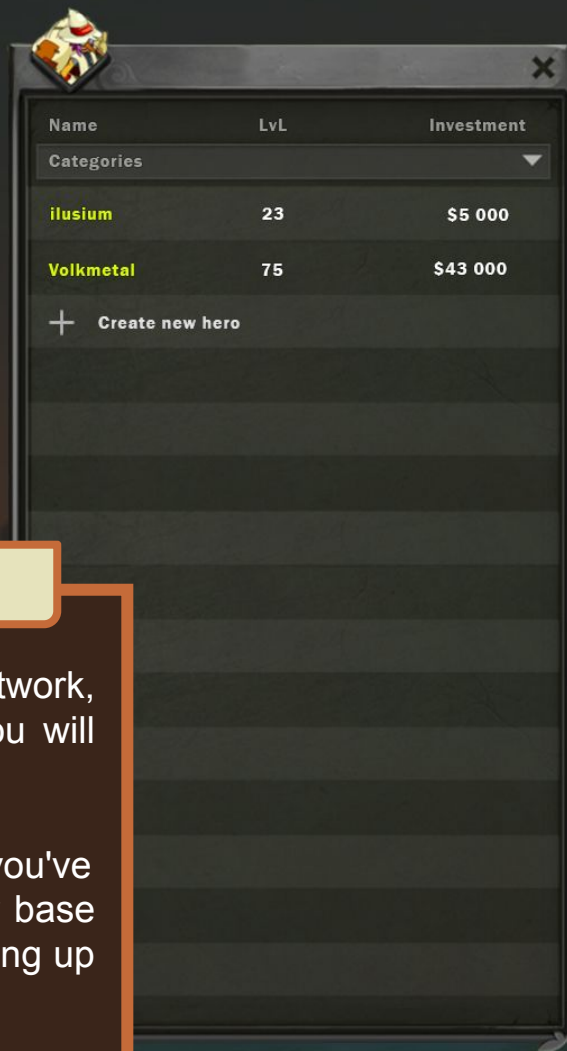
## FARMING AREA

Once you have chosen the network, the server and your position, you will need to choose your hero.

You can choose the one you've already created to increase your base stats and keep farming and leveling up or you can create a new one.

In the last case, you will have to choose the hero for your fighting style, give him a name and choose the amount of the investment.

*Everybody can be useful in the fight*





## FARMING AREA

In the last step, you have to choose your equipment correctly according to your strategies and your fighting style.

All of this will allow you to increase your farming performance and increase your chances of beating the final boss.

*Everybody can be useful in the fight*





# TROGNODID

Dropped

1 170 / 10 k TOKEN  
4 / 20 ITEMS



## BATTLE AREA

Once in the battle, you will be alone against the monsters. To fight them you will have to click on them as much as possible.

They will drop the crypto you came for as well as items that will help you grow.

Remember to take all the tokens and fallen items before the area gets overcrowded and they start to fall and be lost forever.

In real time, you will be able to see the update of all the statistics and also of your earnings. This allows you at any time to collect your winnings or withdraw your hero with your entire investment or add more tokens.



Stacked

56 LP

APR

1 450 %  
+0 %

Total Value Locked

\$ 3,875,536

Earned JING

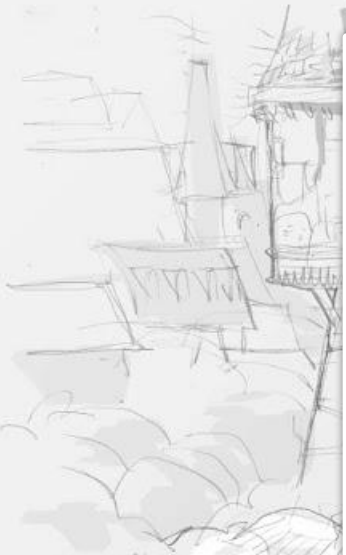
3 255

HARVEST

ADD LP

*Never underestimate your enemy*





### BATTLE AREA

MonsterFarm will never leave you alone in the fight against the dark side. At any time, you can summon a soldier.

There will be several types of soldiers some of which will increase your own skills, others will help you collect items and tokens, others will increase the skills of other soldiers. Carefully choose your soldiers because you can only have four.

You will also be able to level up your soldier and increase their power.

*Never underestimate your enemy*



# TROGNODID

Dropped

1 170 / 10 k TOKEN  
4 / 20 ITEMS



### SOLDIERS

	Dread Knight	Hire \$0.5
	Frostleaf	LvL 10 LvL UP \$0.9
	Shinatobe	Hire \$0.8
	Aphrodite	Hire \$0.9
	Ma Zhu	Hire \$0.2
	King Midas	Hire \$5.0
	The Great Forest	Hire \$2.0
	Treebeast	LvL 52 LvL UP \$17.5
Force		Speed
+1 250		x3.2
		APR
		+279%

Stacked	APR	Total Value Locked	Earned JING	<b>HARVEST</b>
56 LP	1 450 % +0 %	\$ 3,875,536	3 255	<b>ADD LP</b>







# TROGNODID

Dropped

1 170 / 10 k TOKEN  
4 / 20 ITEMS



## BATTLE AREA

During the fight you will get different types of items and consumables. Use them as you wish in order to defeat the boss.

Each of your soldiers will have two slots for equipment. All this will allow you to increase your farming performance and each modification will be directly displayed in the statistics area so that you can change your strategy at any time.

*Good Luck!*

Stacked

56 LP

APR

1 450 %  
+687 %

Total Value Locked

\$ 3,875,536

Earned JING

3 255

HARVEST

ADD LP