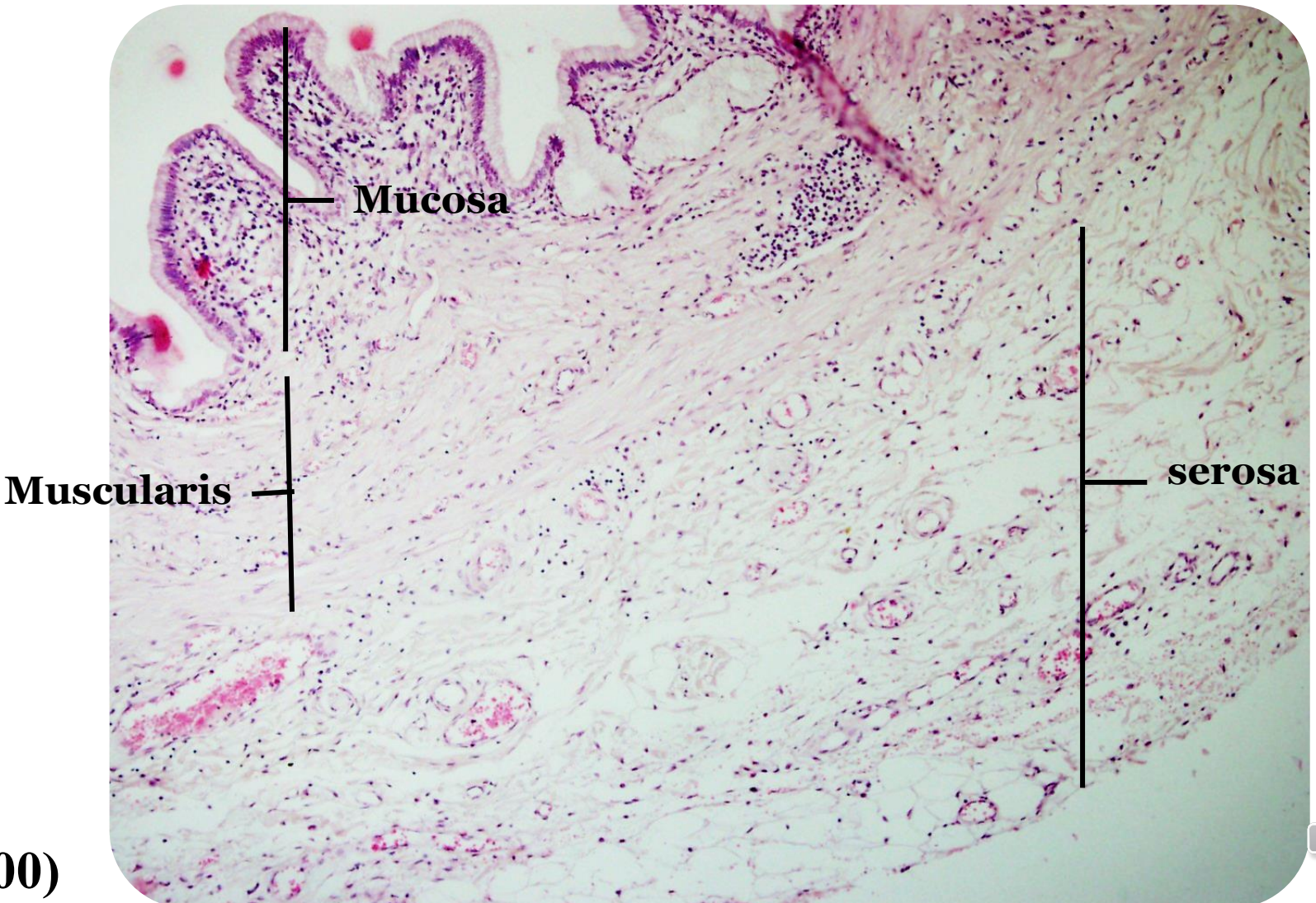


Accessory digestive system

by: Dr. Talebi



Gall bladder layers



(X100)



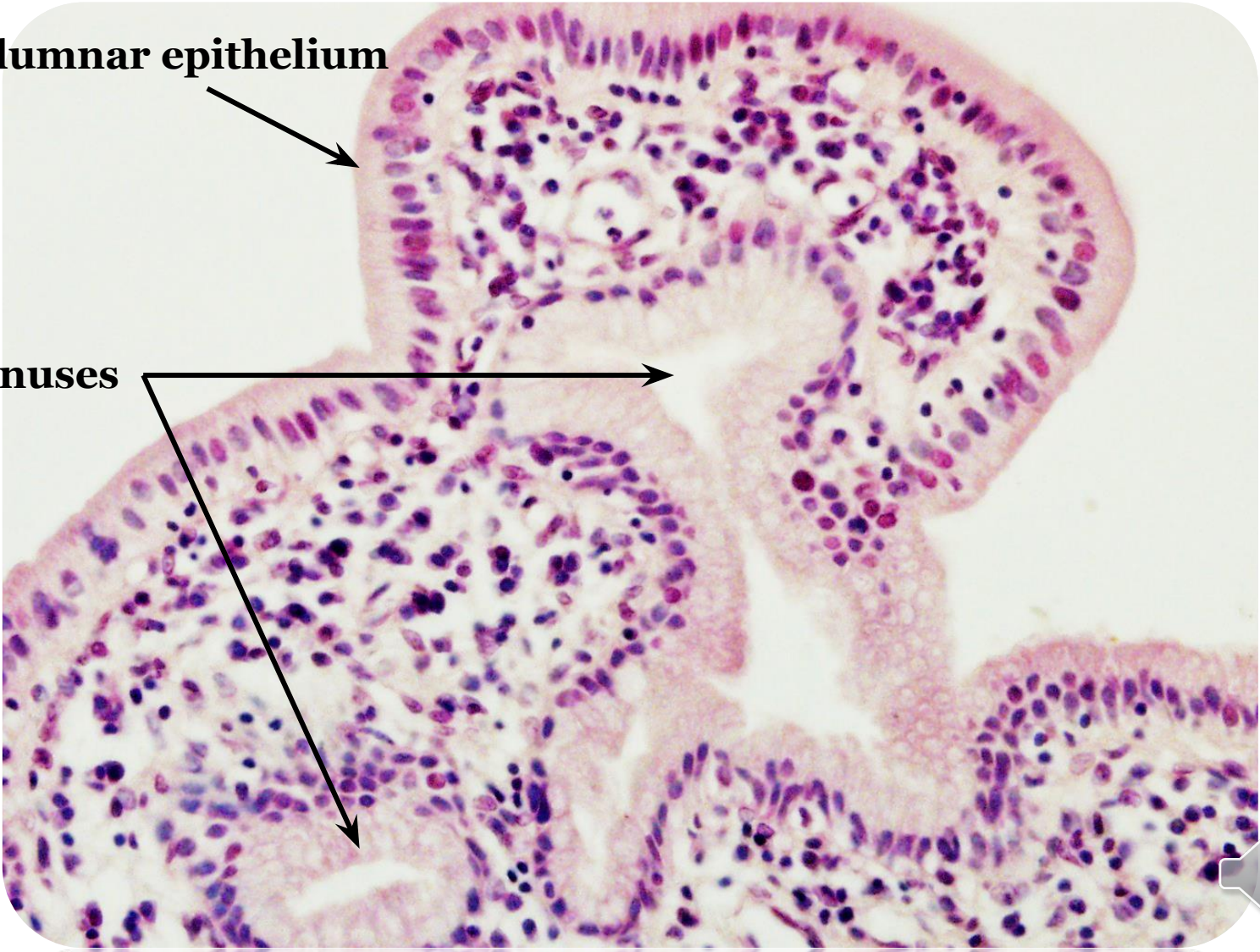
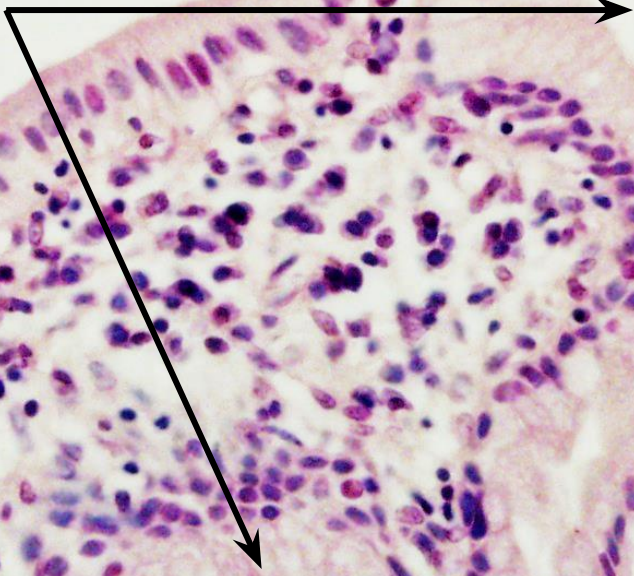
Gall bladder epithelium



Simple columnar epithelium



Aschoff sinuses

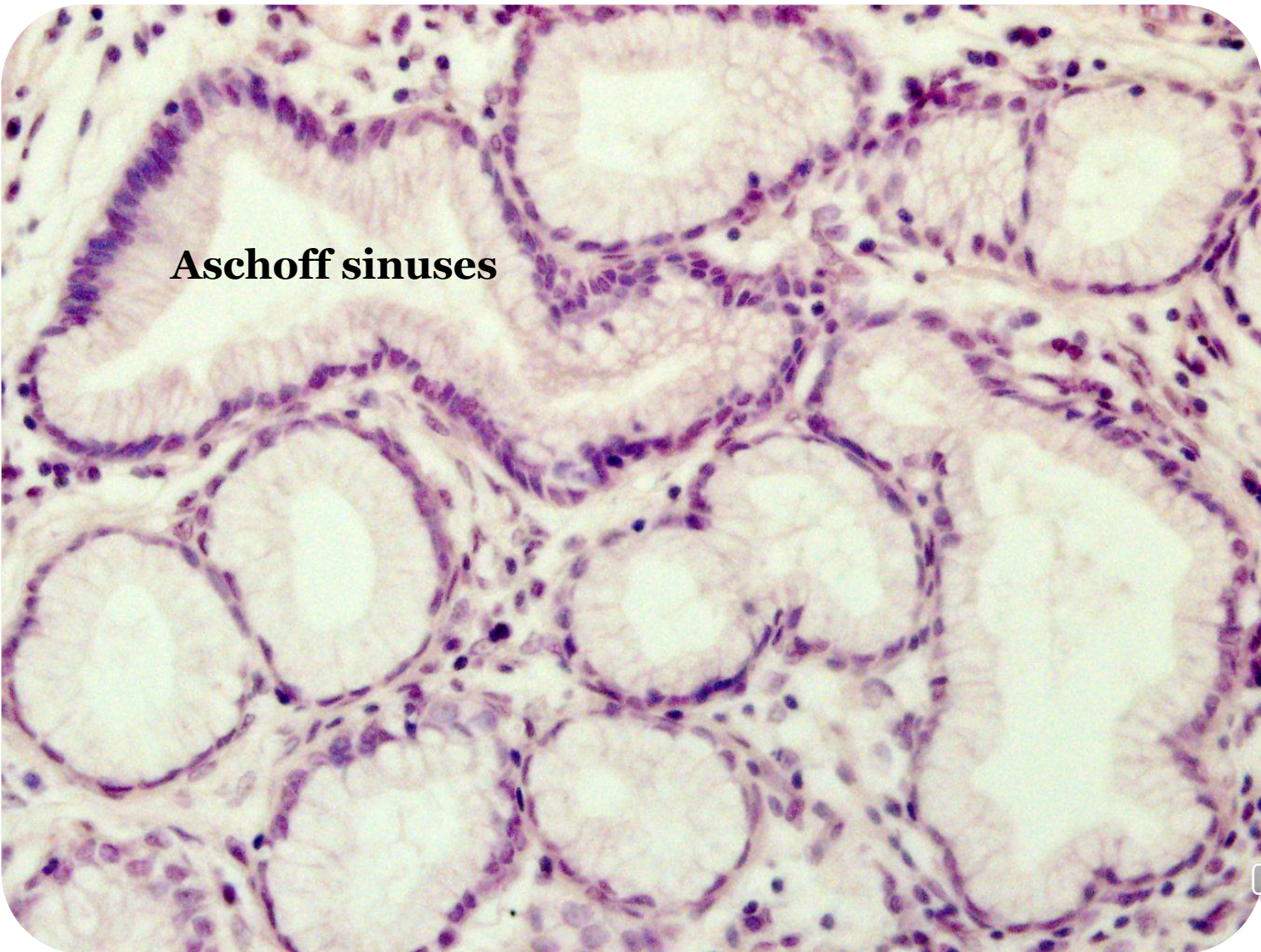


(X400)





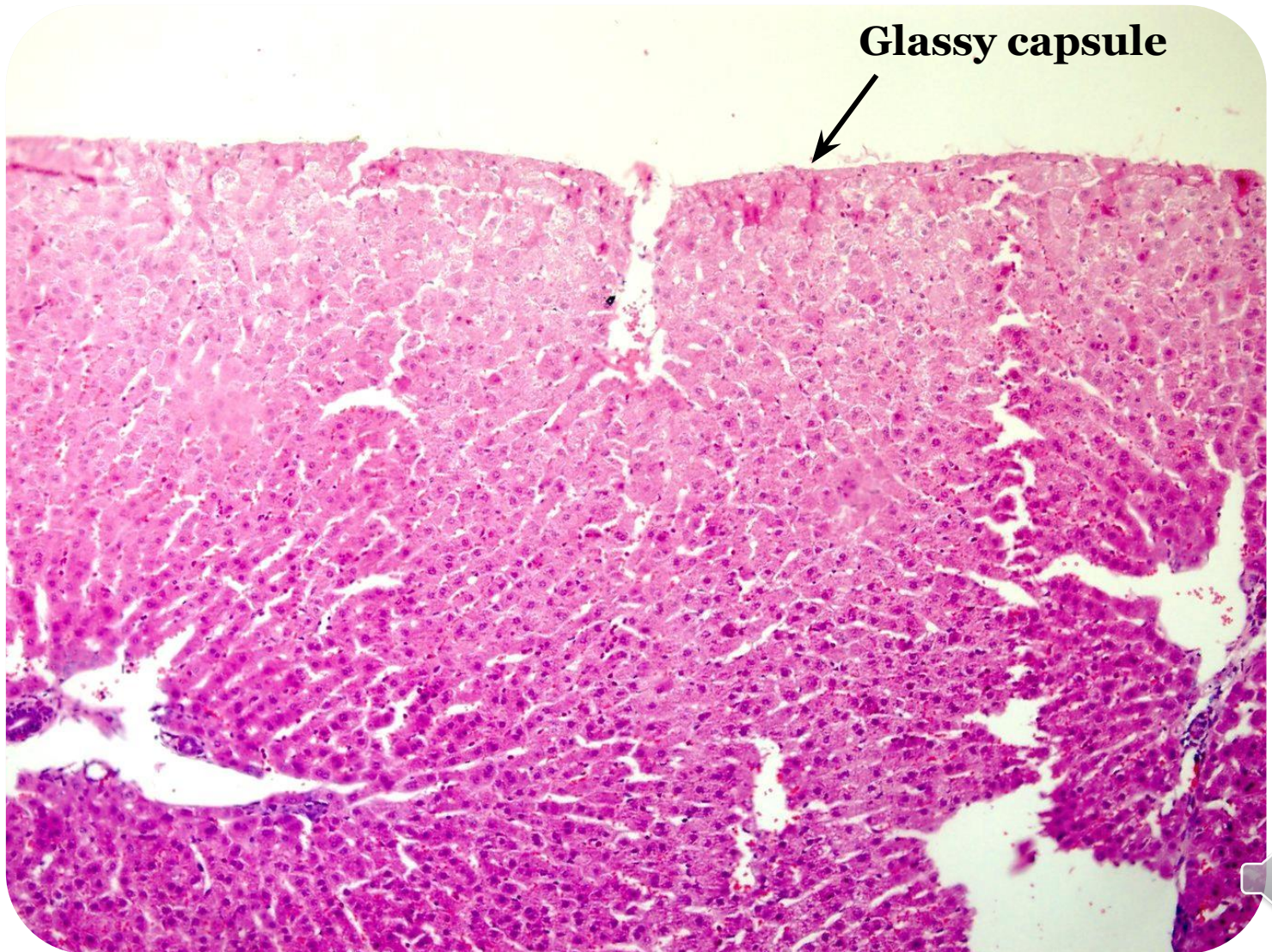
Gall bladder: Rokitansky-Aschoff sinuses



(X400)



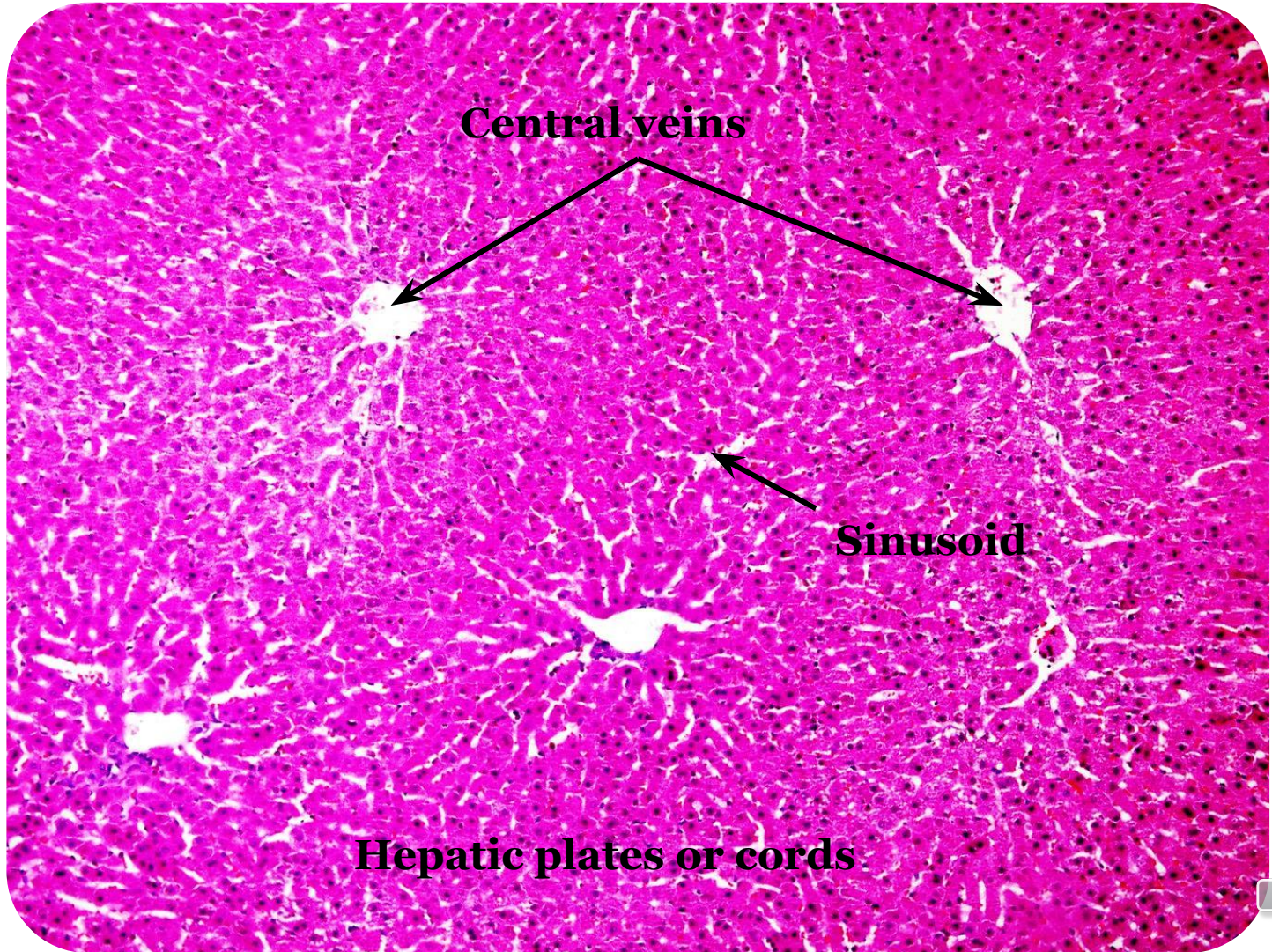
Liver: Glisson's capsule



(X100)



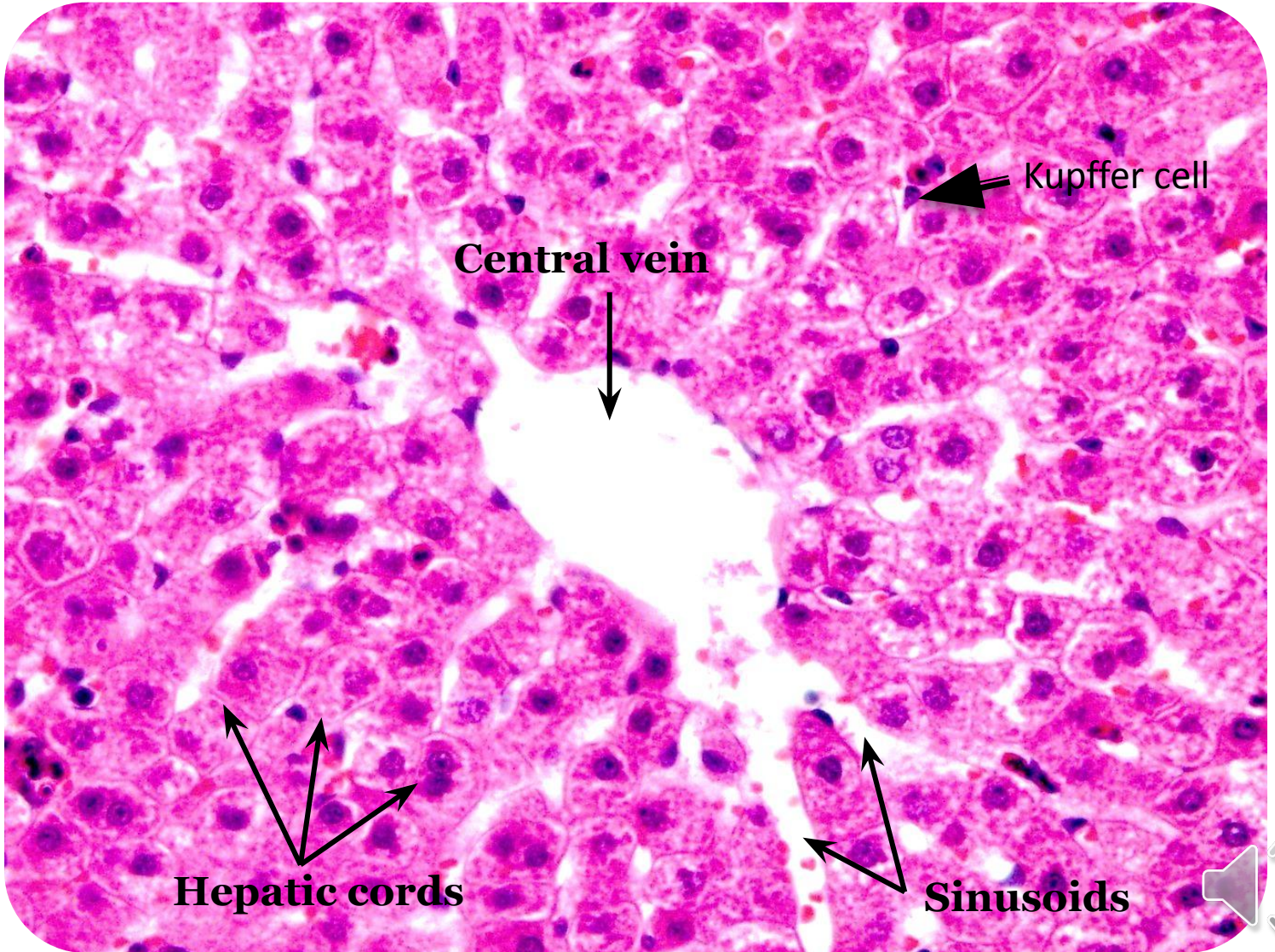
Liver: Classic lobule



(X100)



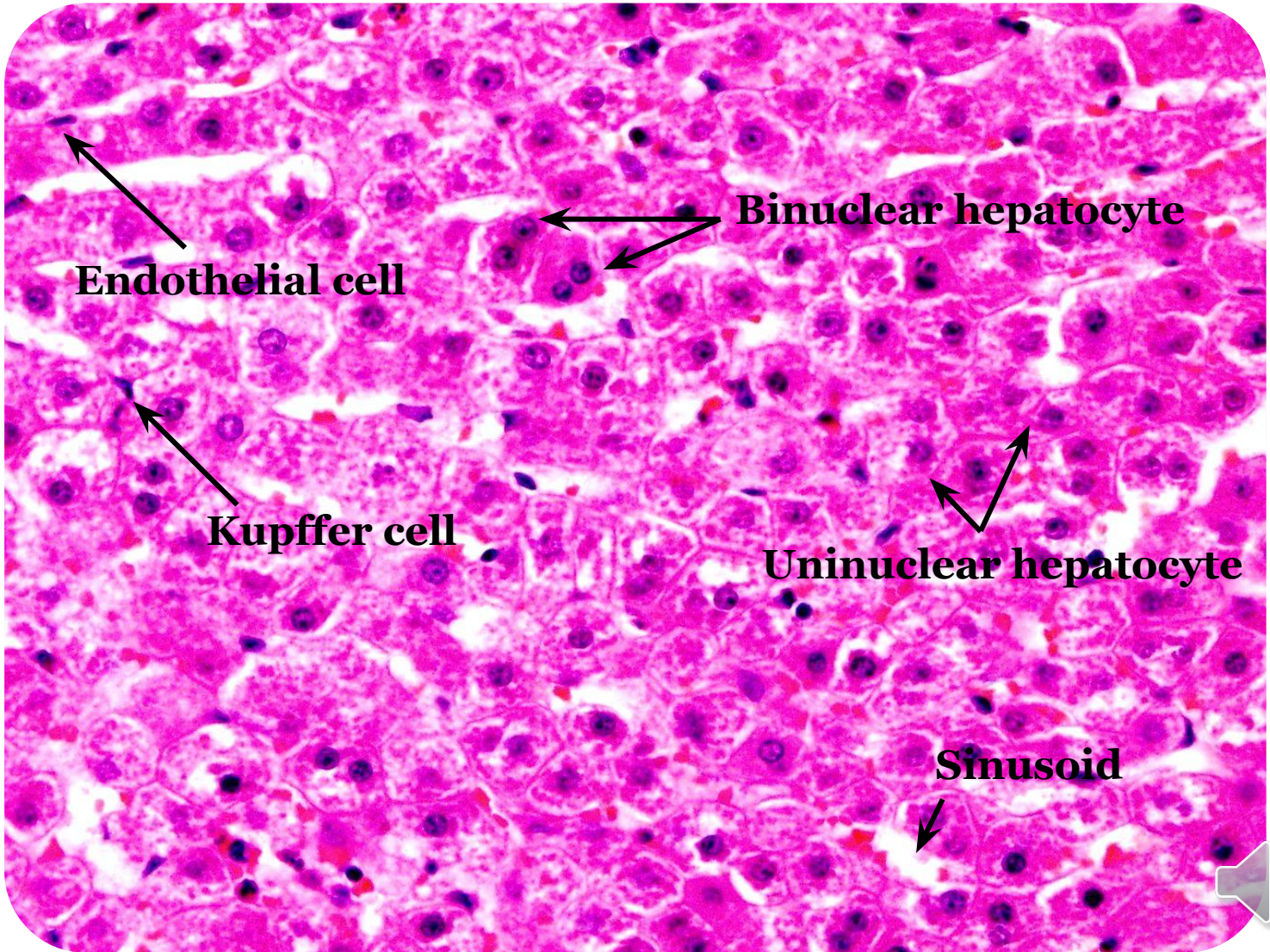
Liver: Lobule



(X400)



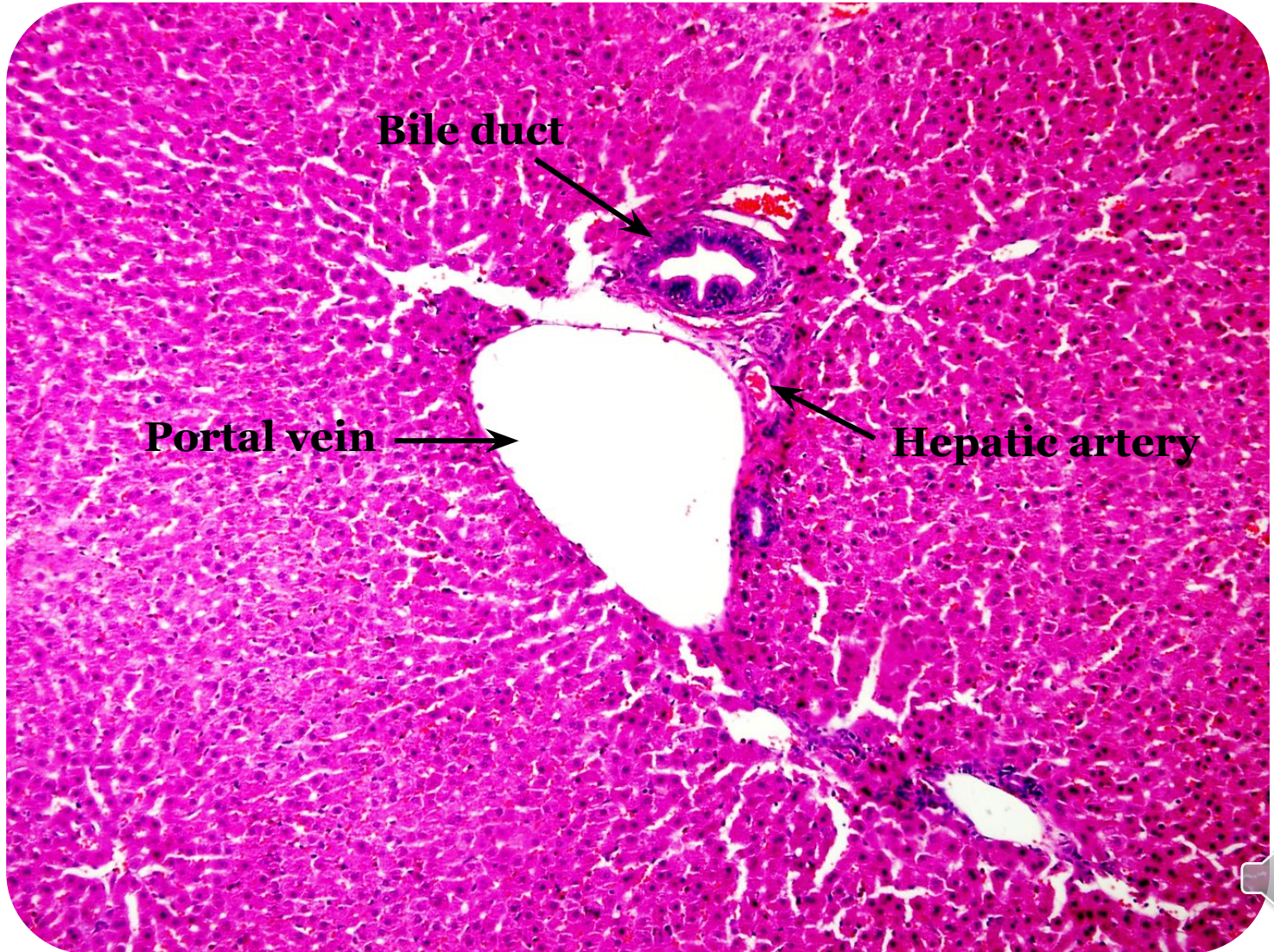
Liver: Hepatic cells



(X400)



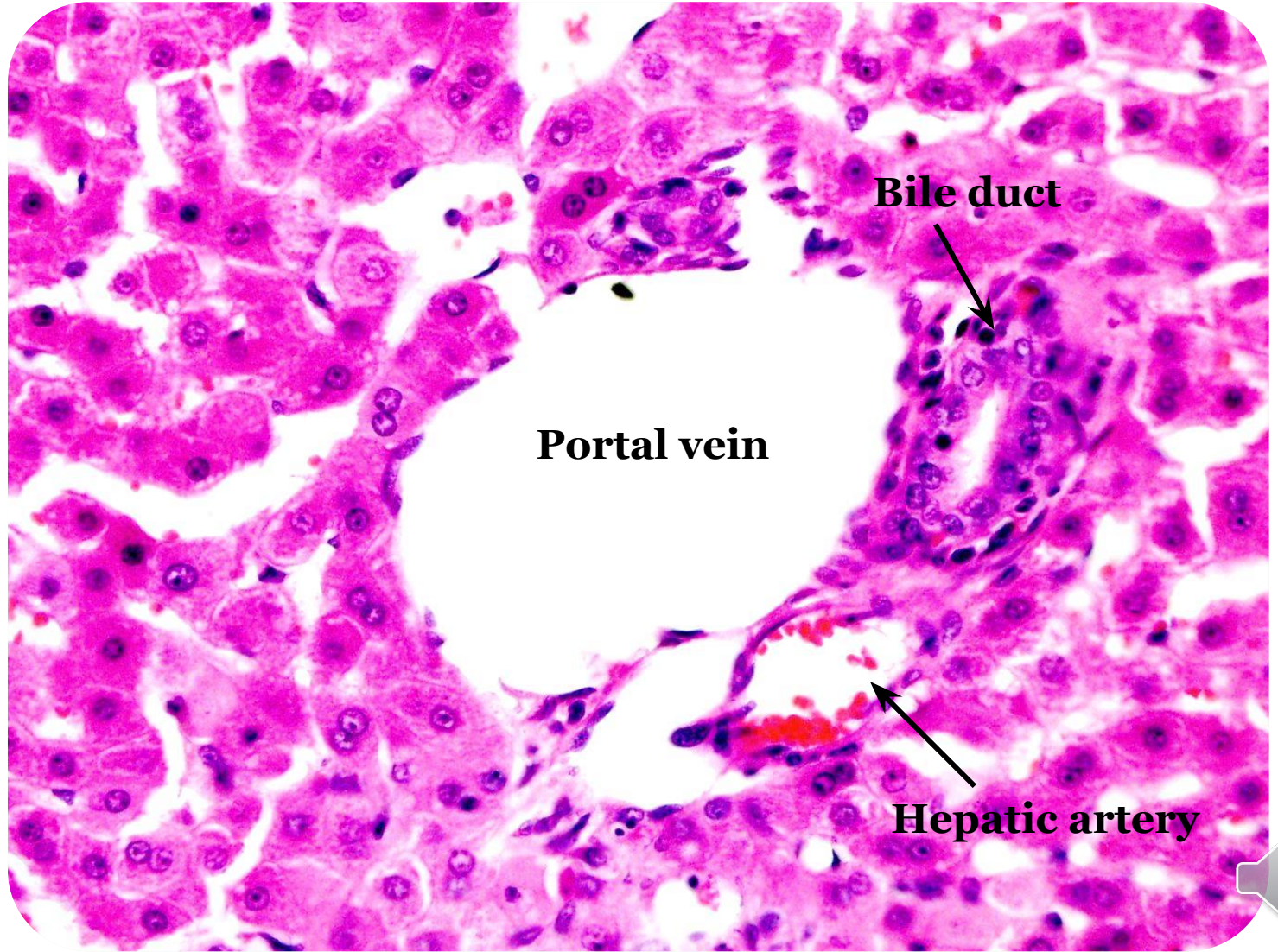
Liver: Portal triad



(X100)



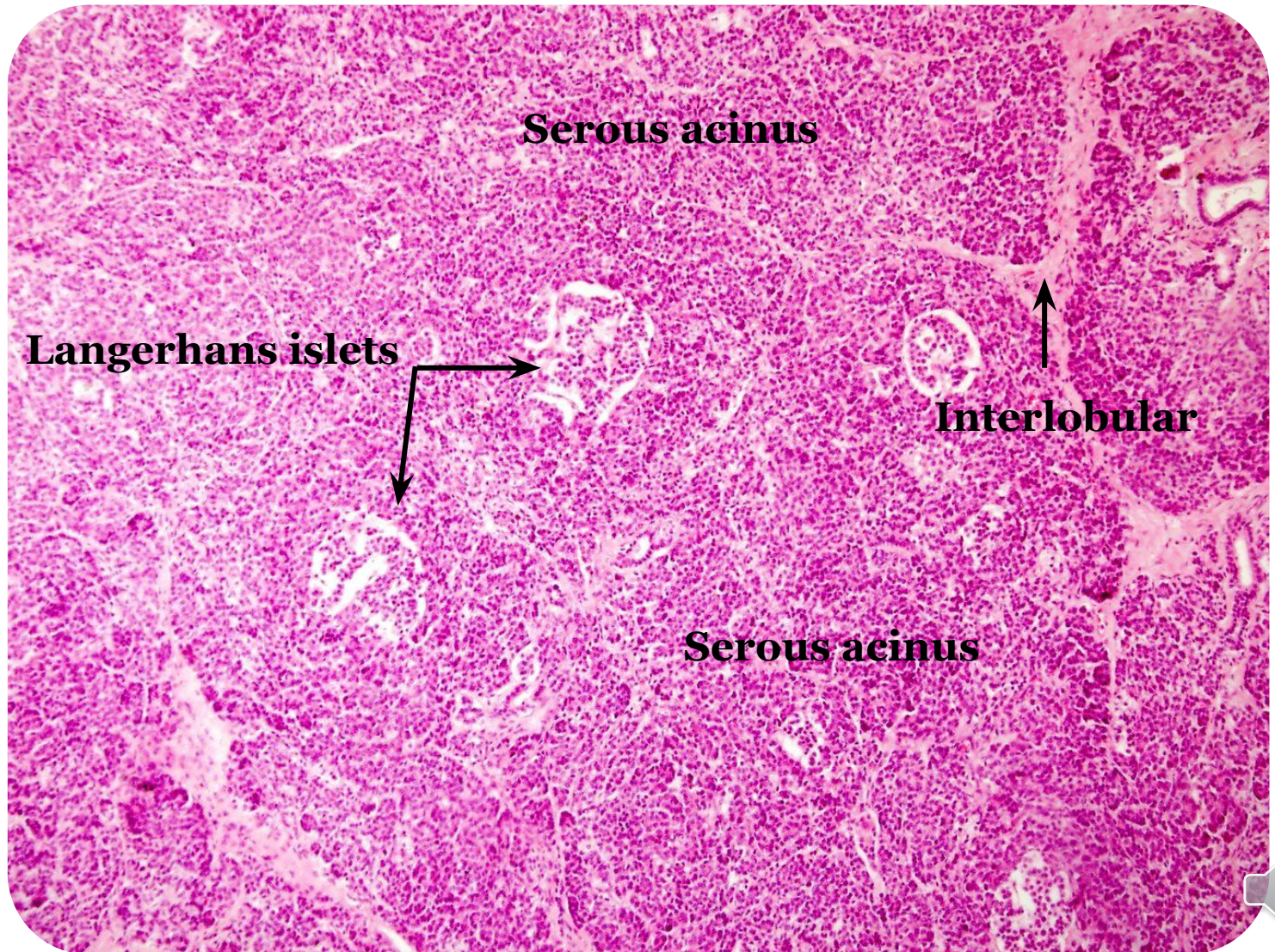
Liver: Portal triad



(X400)



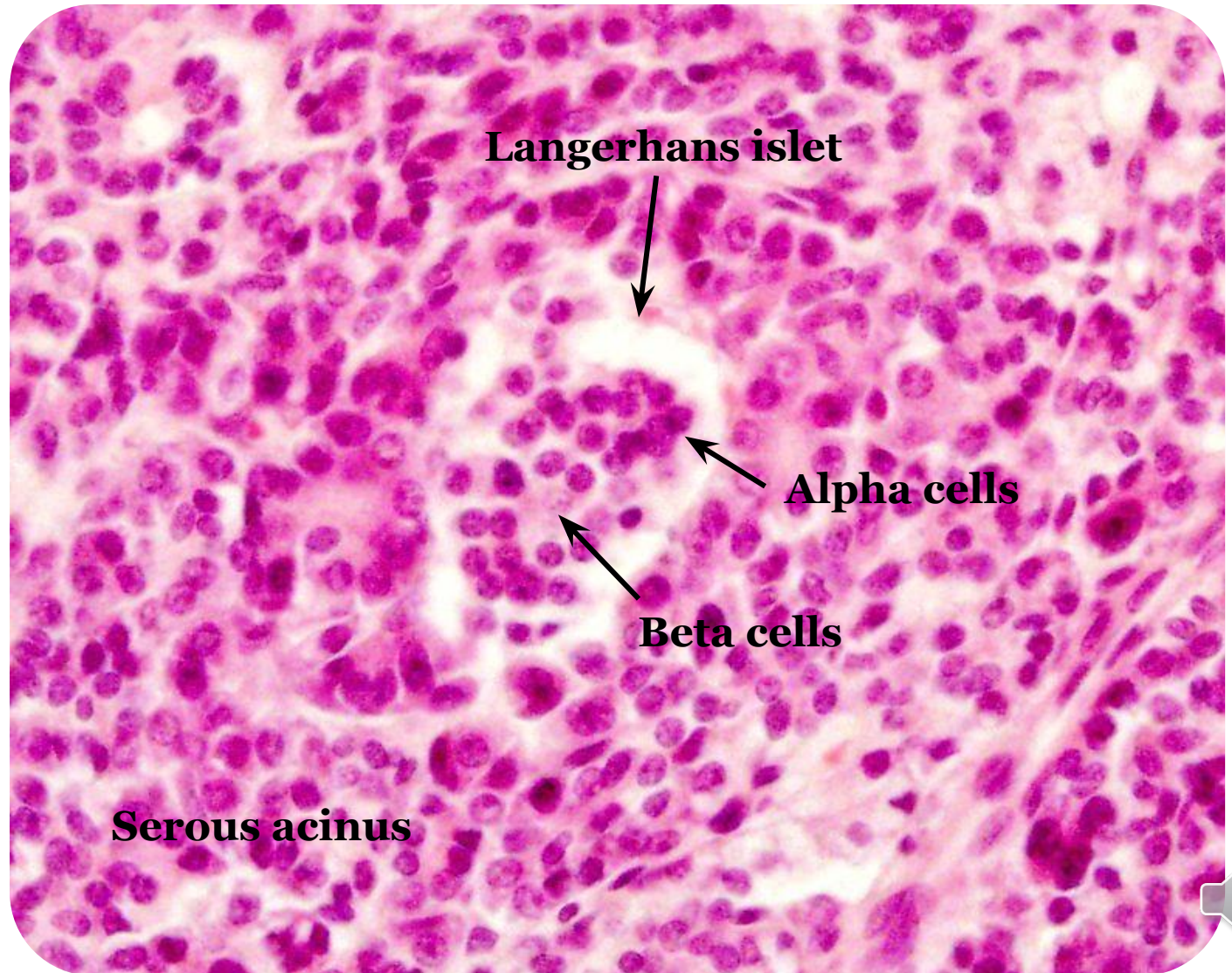
Pancreas lobules



(X100)



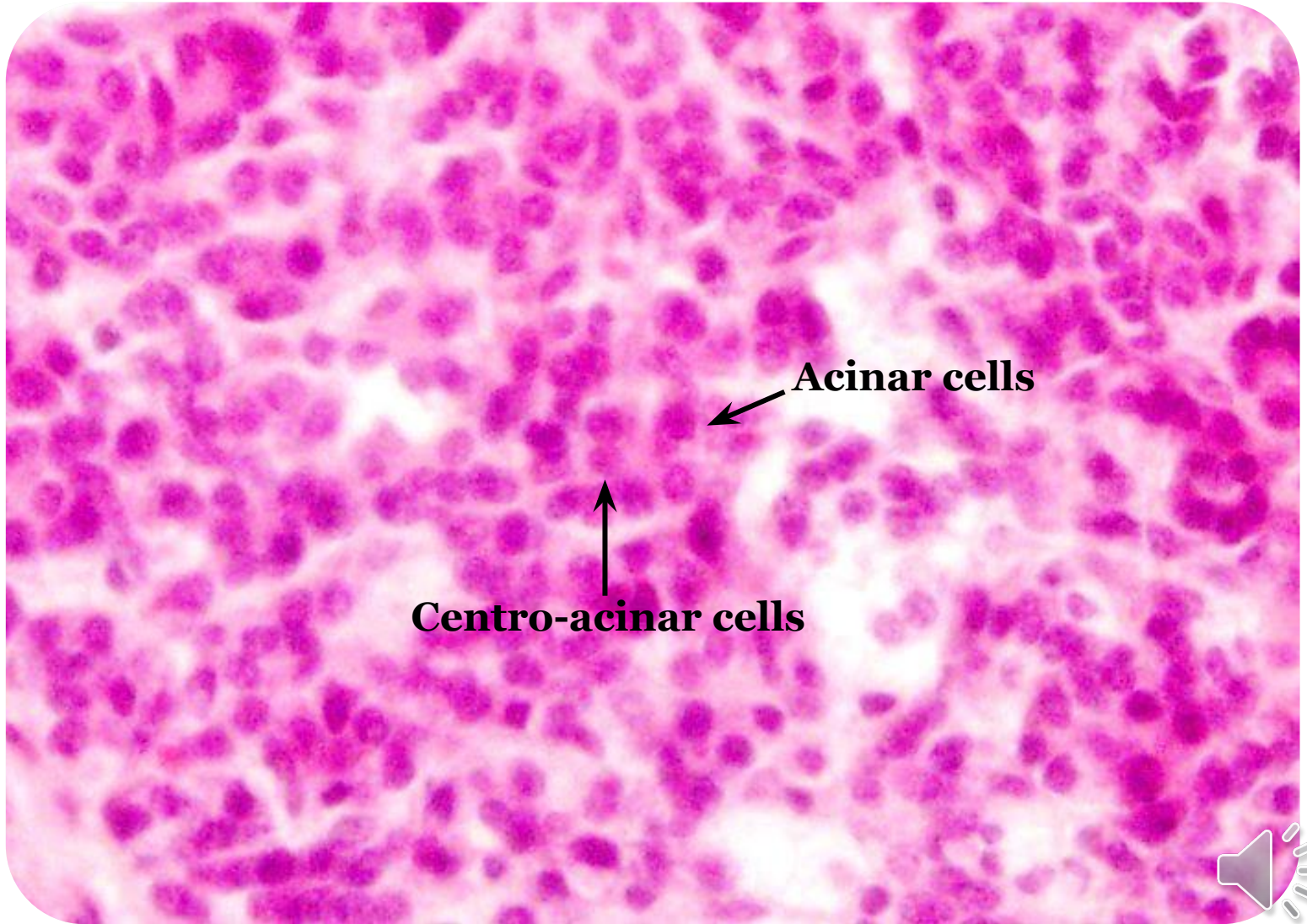
Pancreas: Langerhans islet cells



(X400)



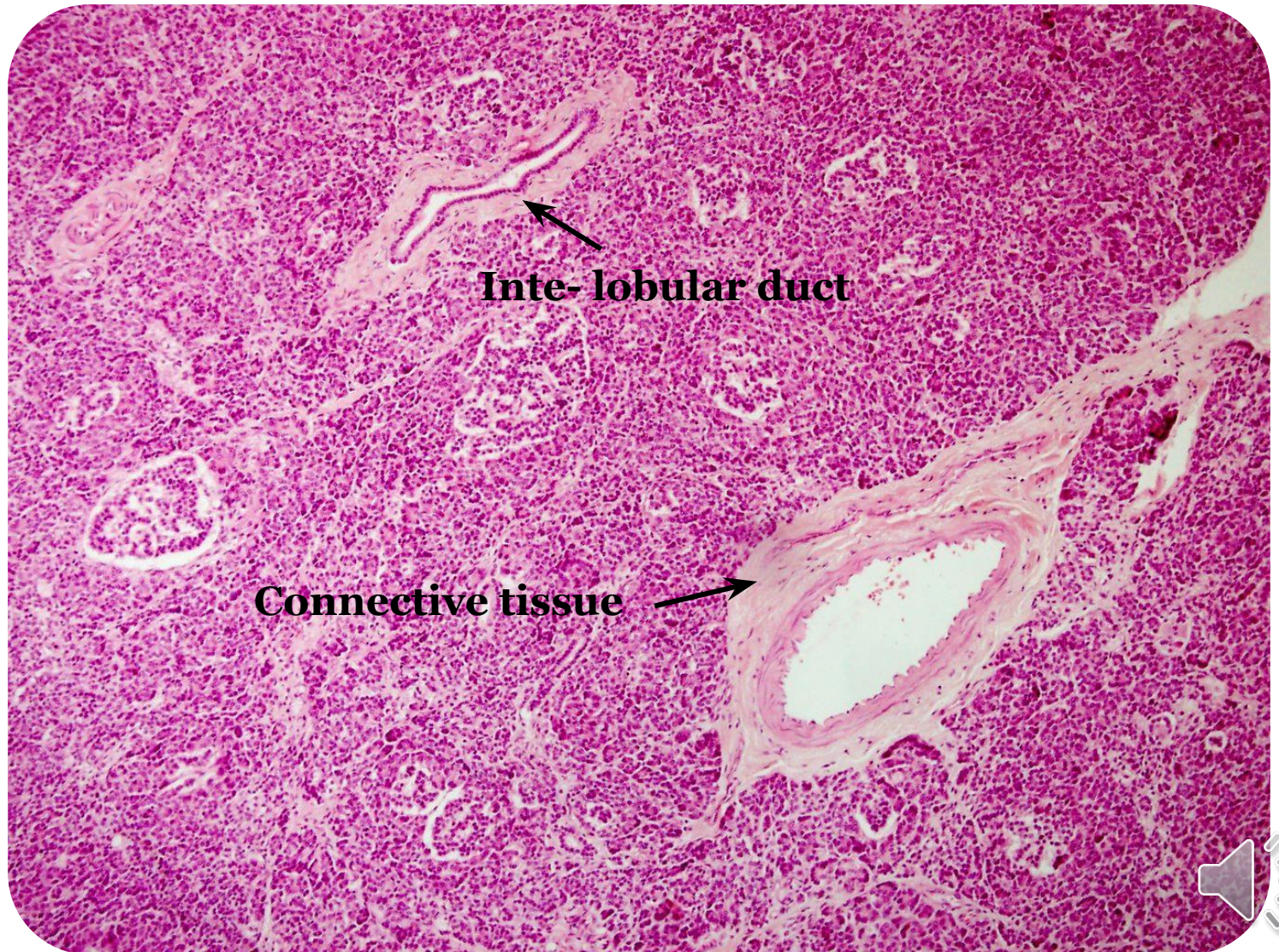
Pancreas: Serous acinus



(X100)



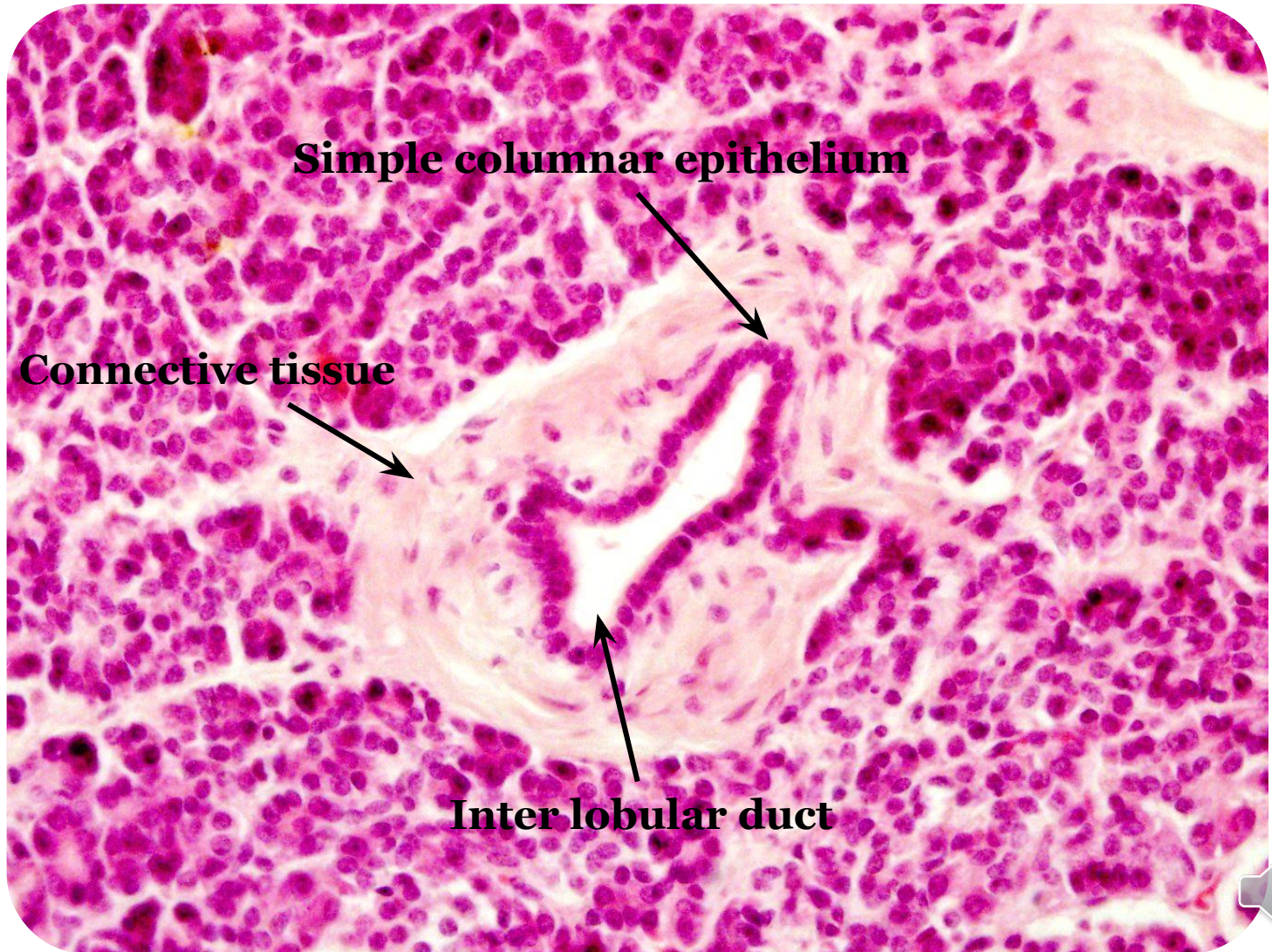
Pancreas: Ducts



(X100)



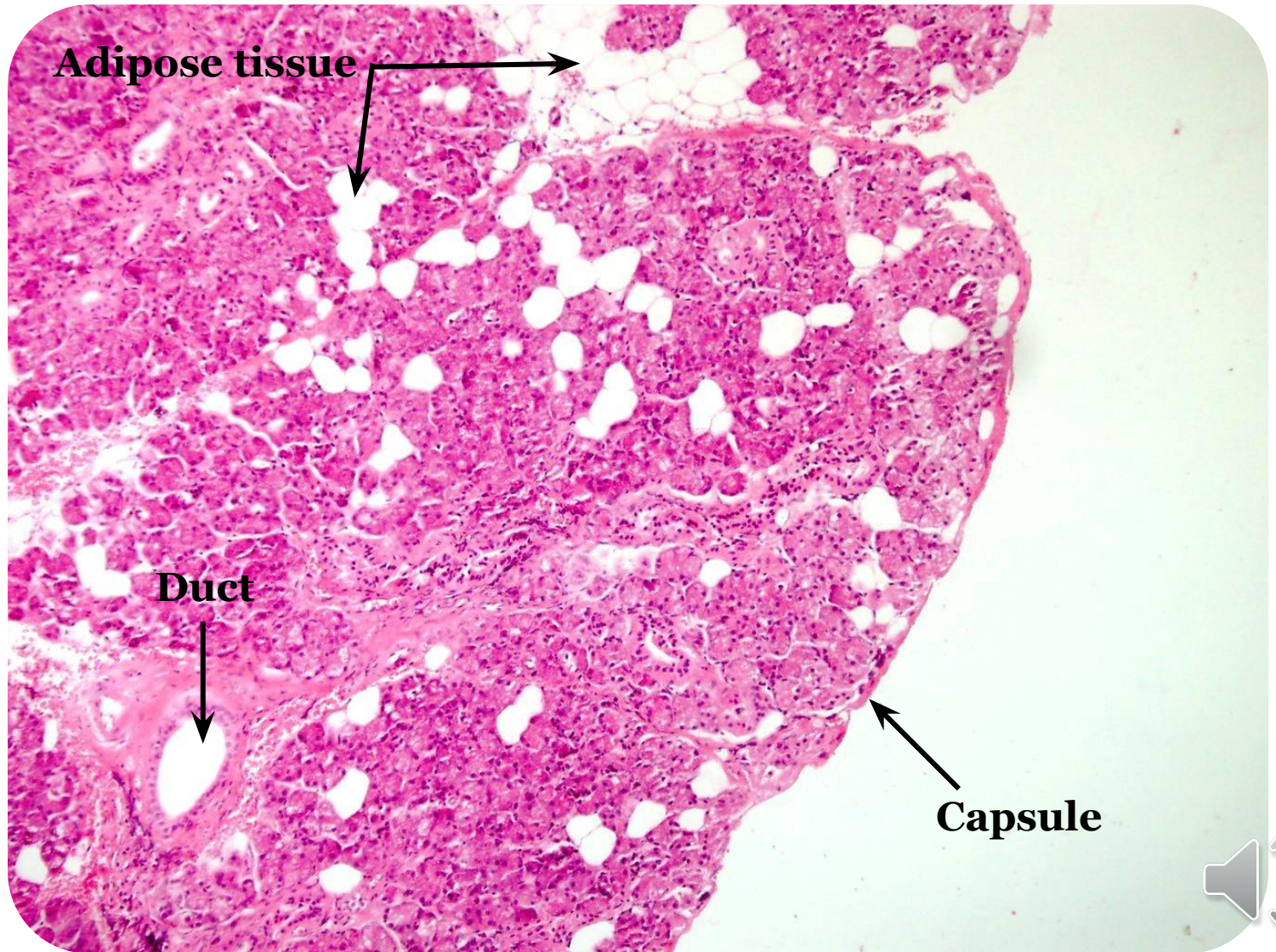
Pancreas: Intra lobular duct



(X400)



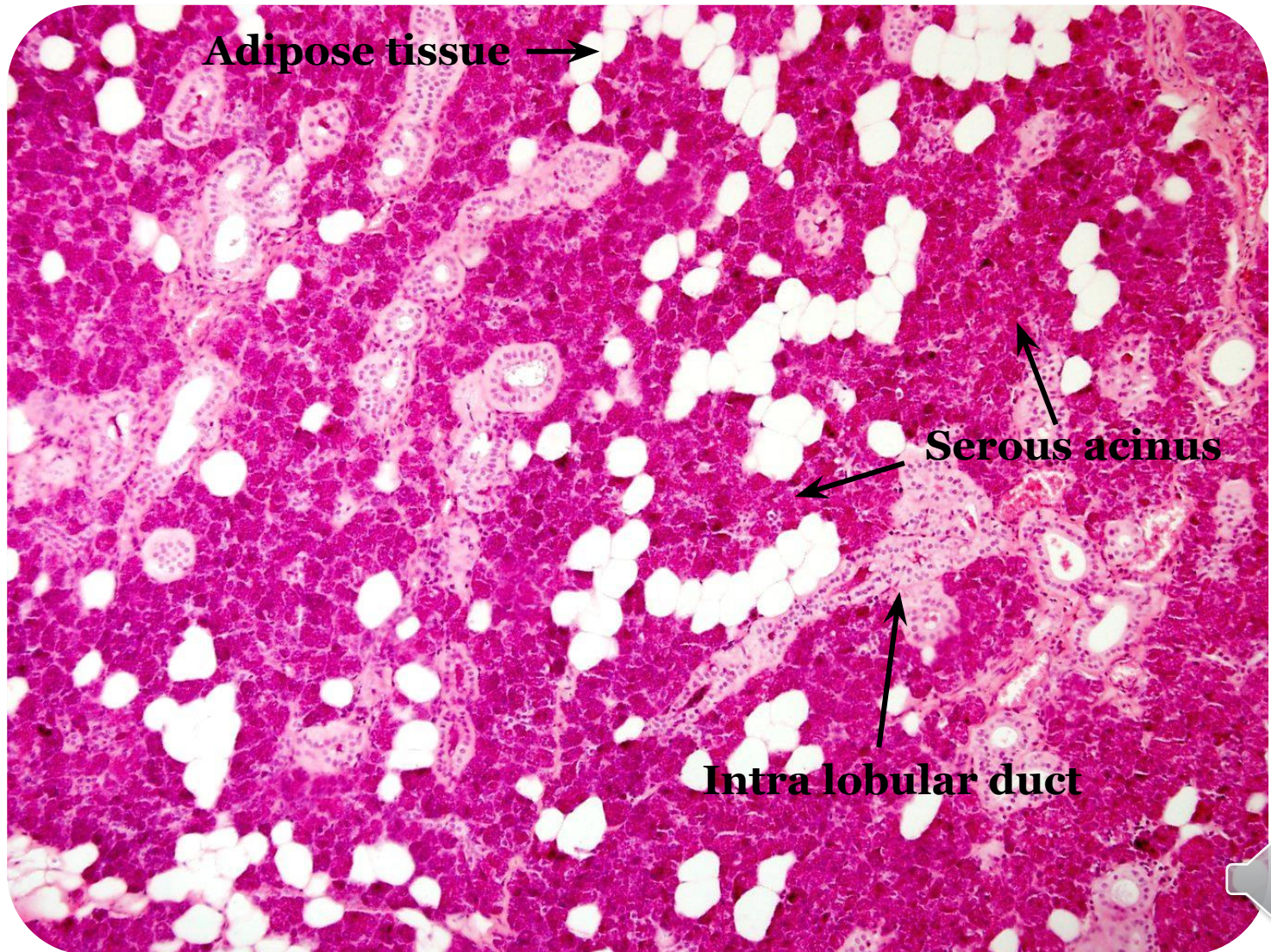
Parotid gland



(X100)



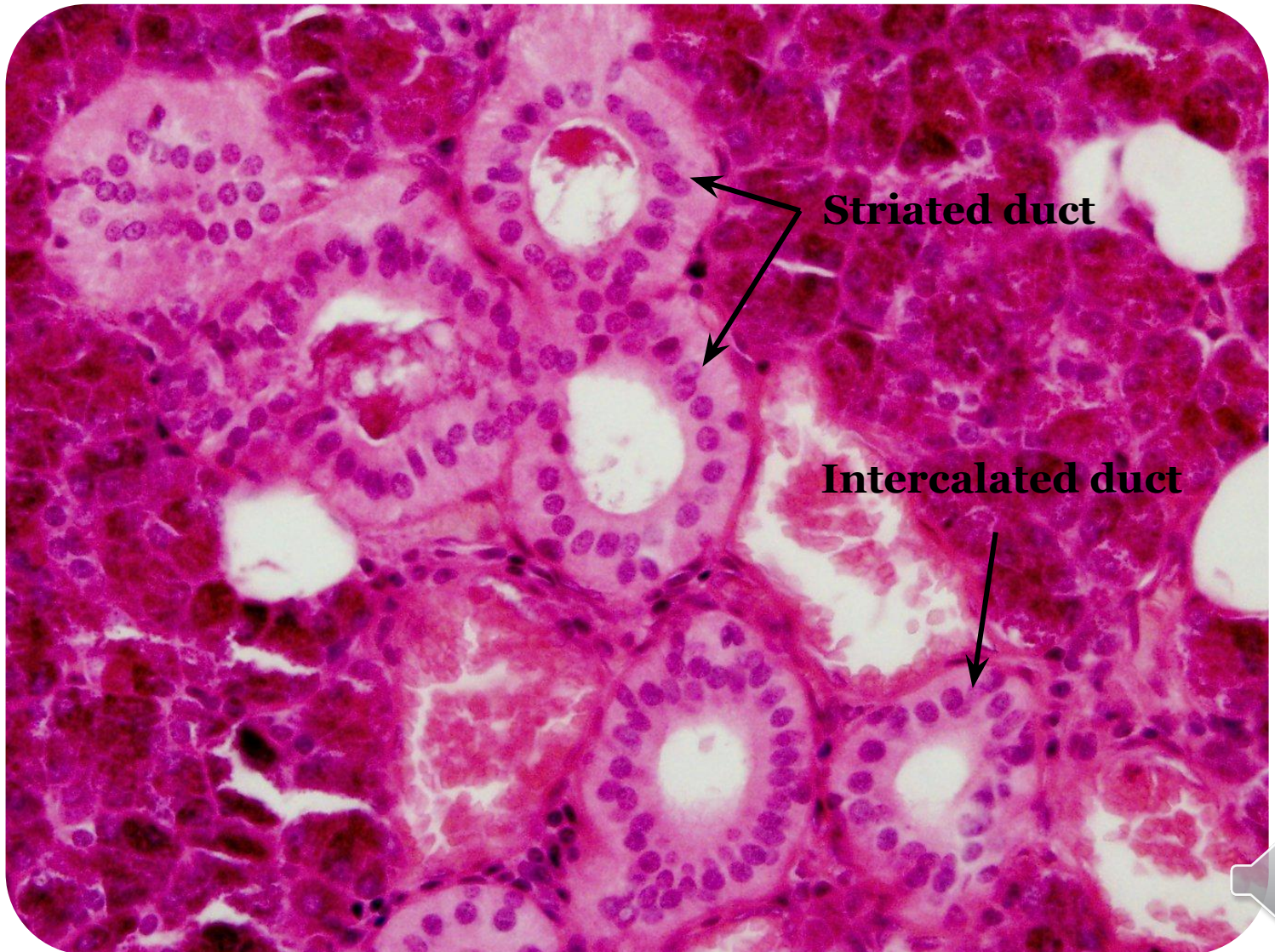
Parotid gland



(X100)



Parotid gland: Intra lobular duct

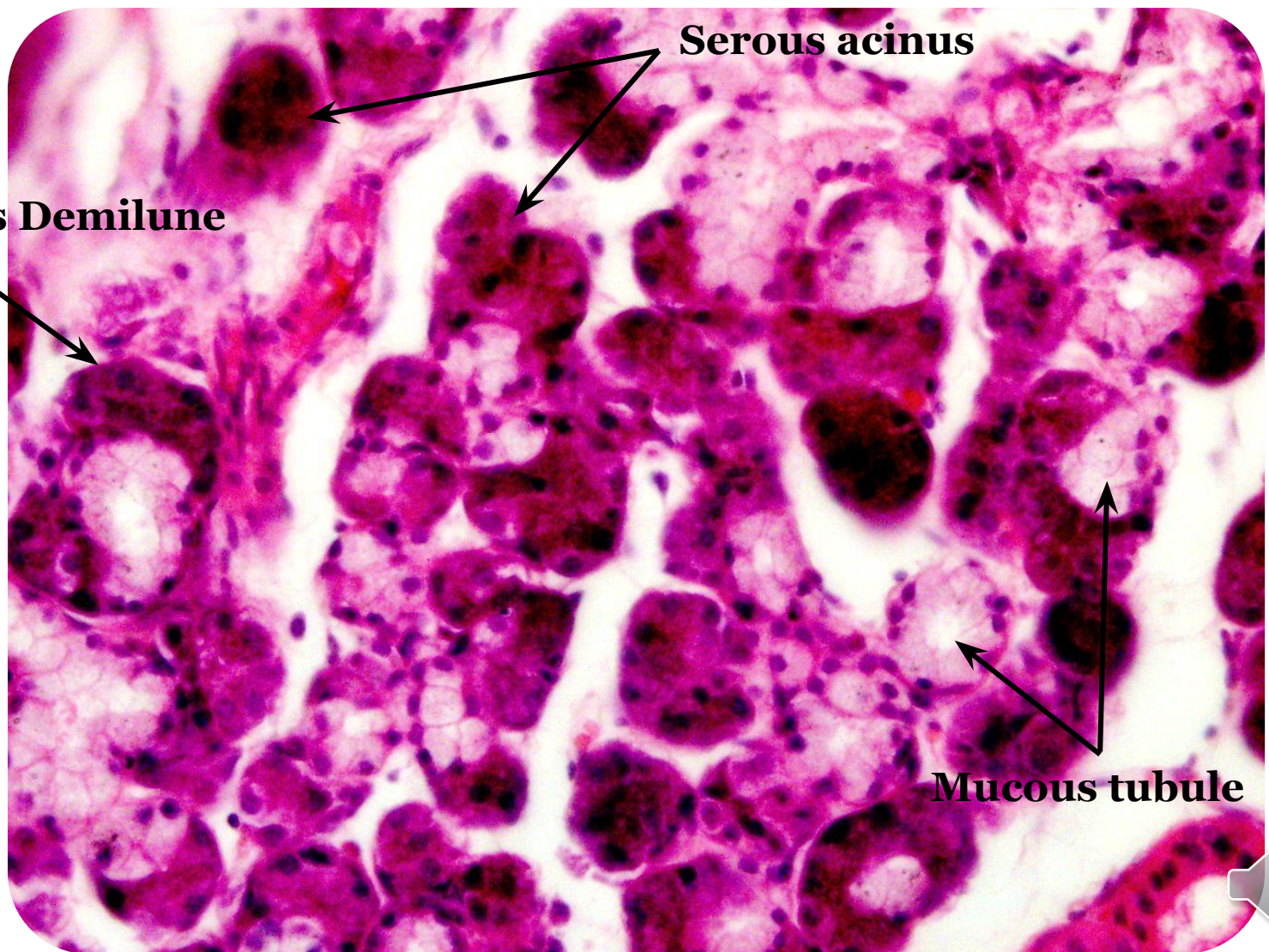


(X400)





Mixed gland: Serous demilune



Giannuzzi's Demilune

Serous acinus

Mucous tubule

(X400)

