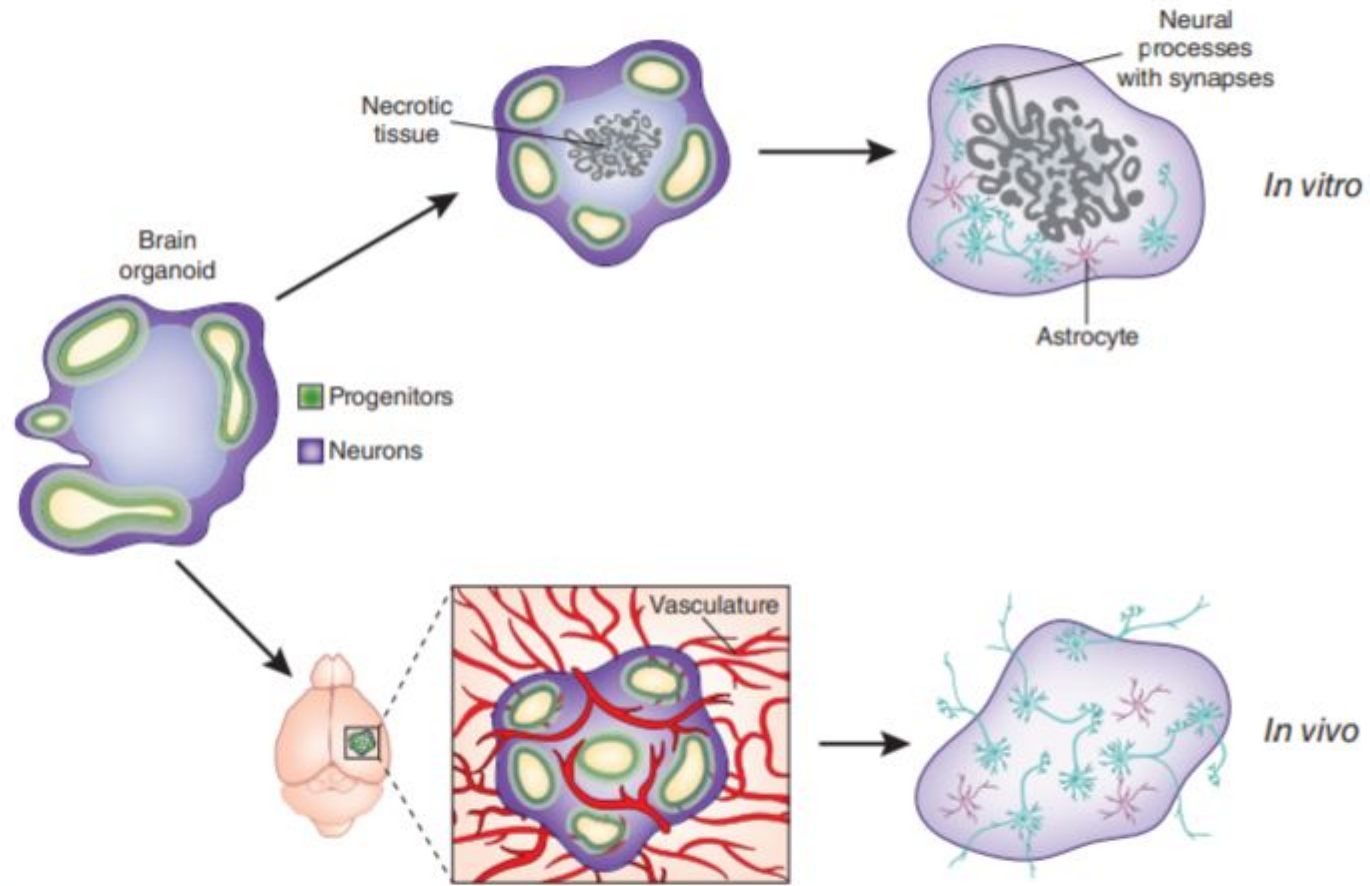
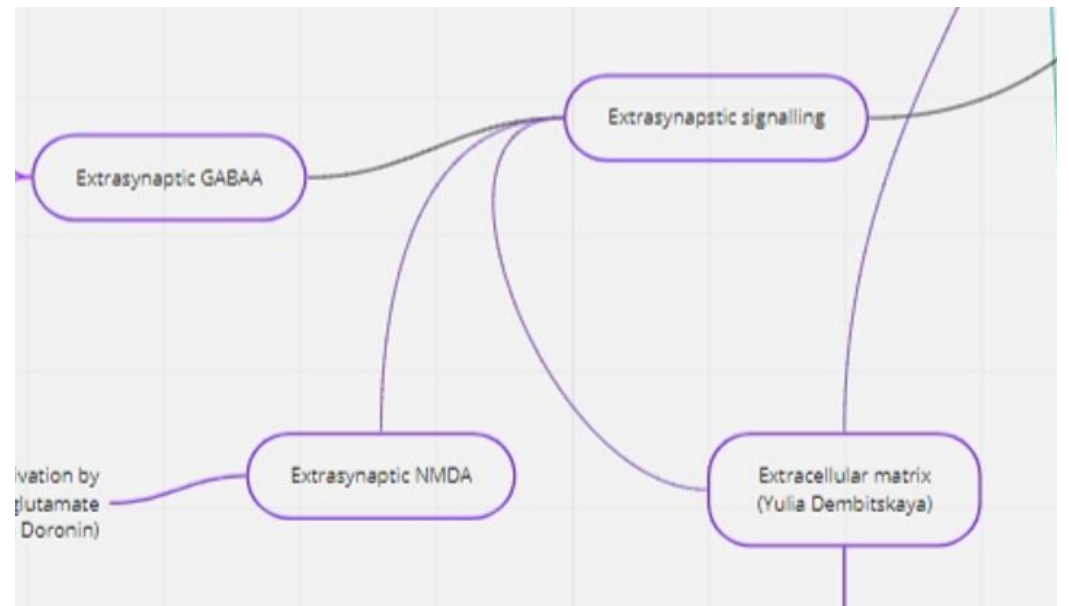
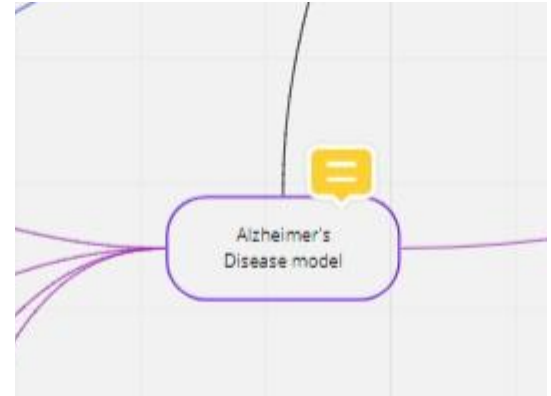
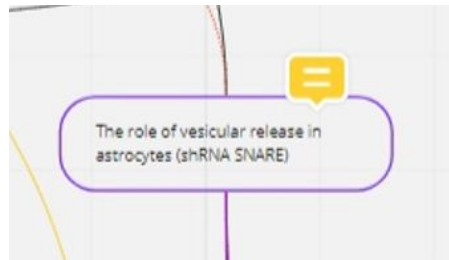
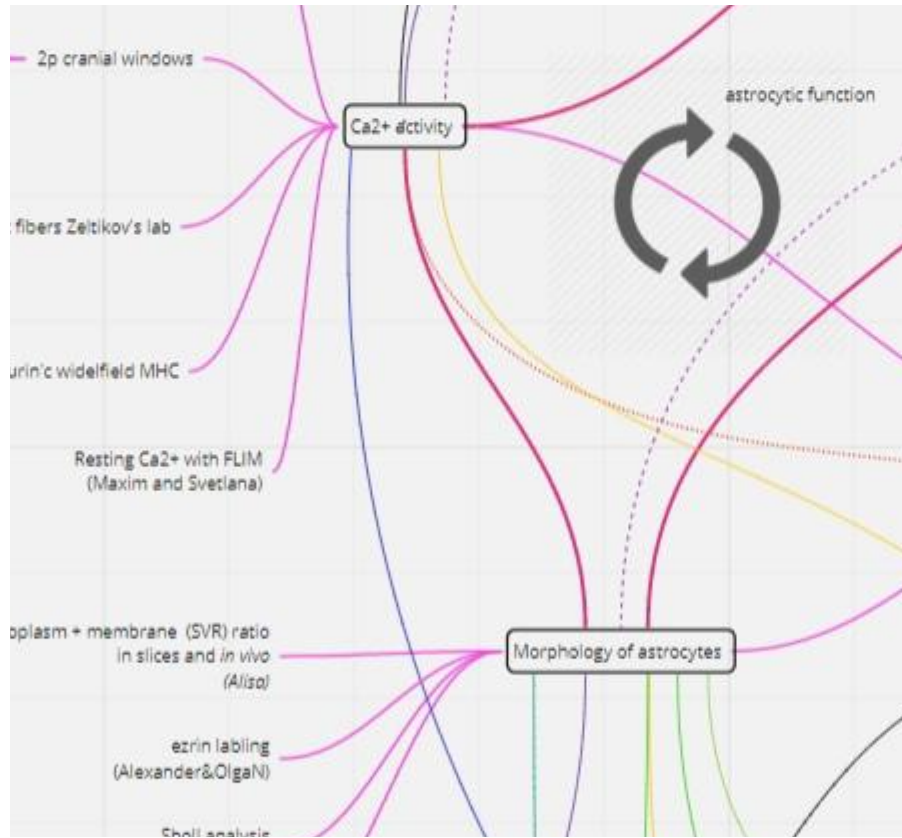


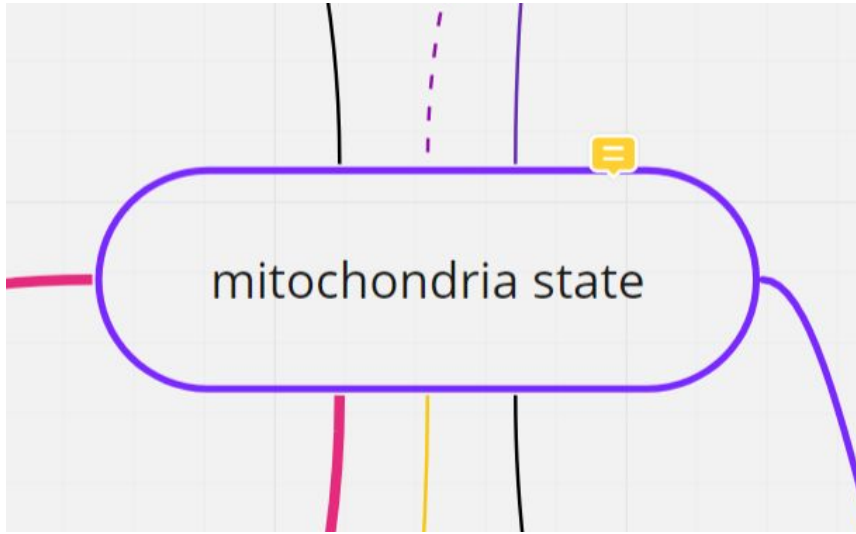
Missy T. Pham, 2018



Lancaster M.A., 2018

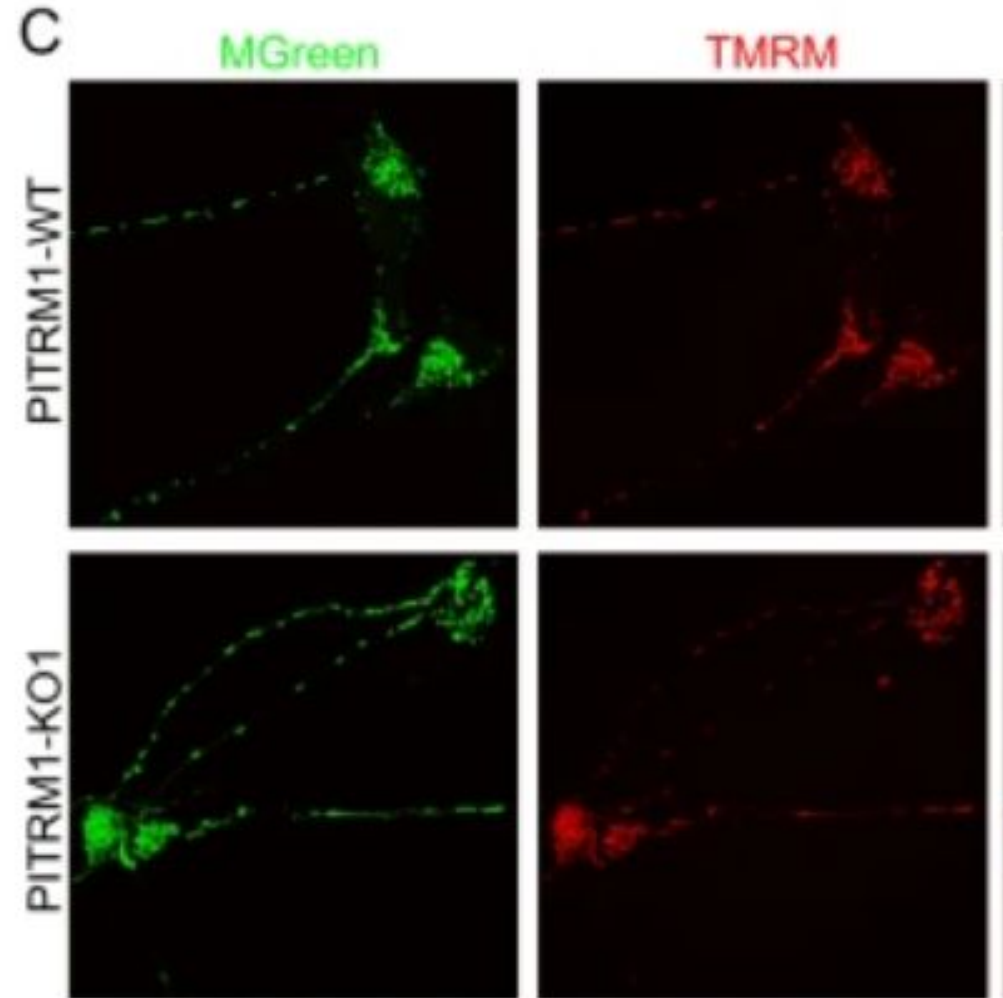


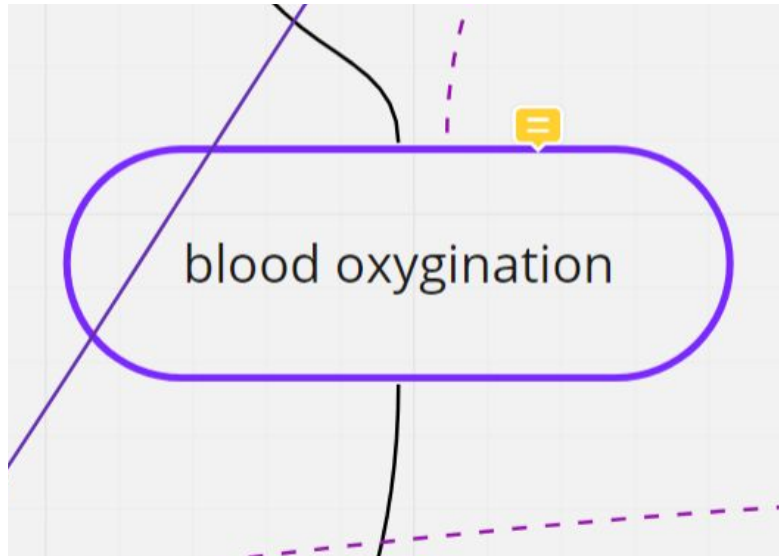




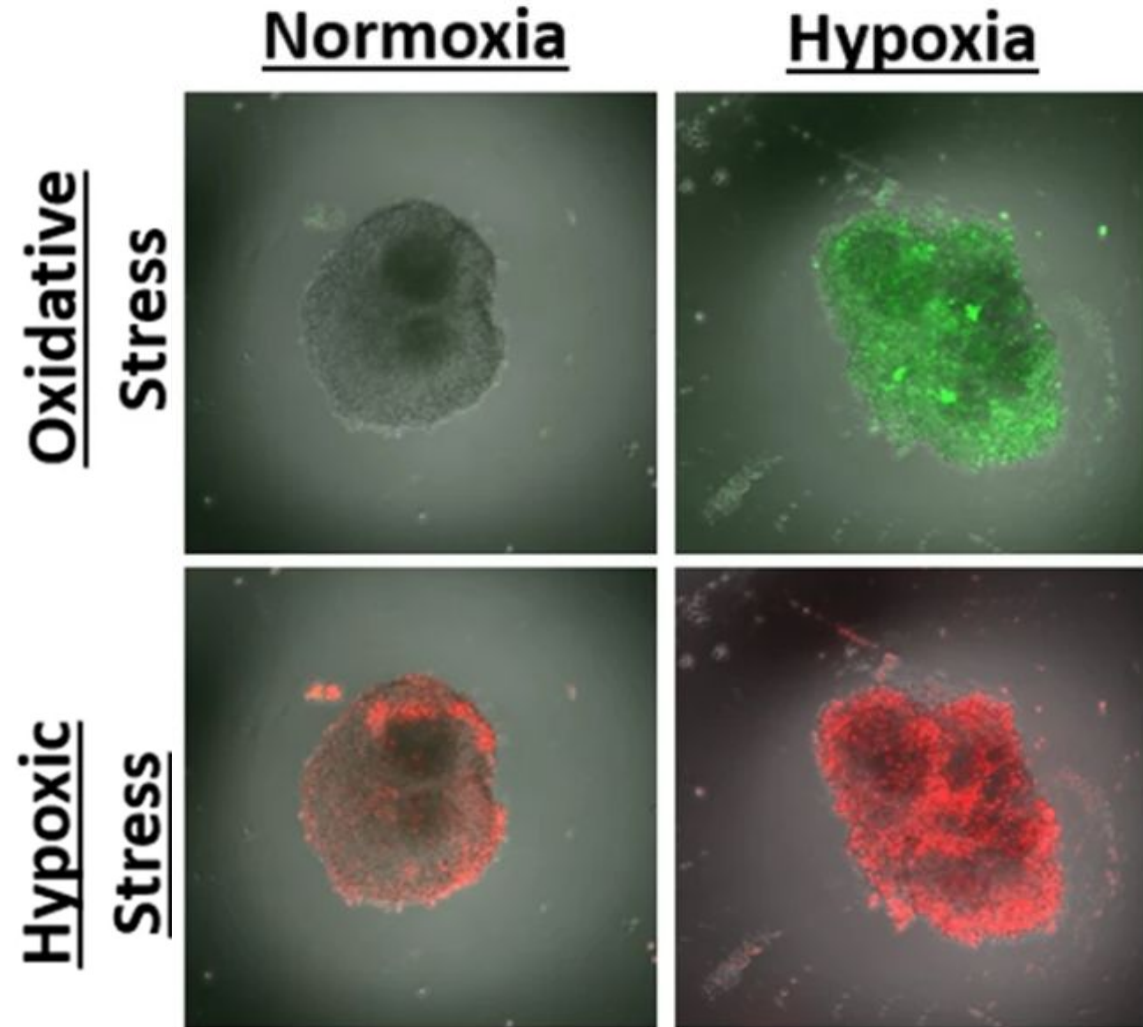
**Loss of function of the mitochondrial peptidase PITRM1 induces proteotoxic stress and Alzheimer's disease-like pathology in human cerebral organoids** (Pérez M.J. et al. 2020)

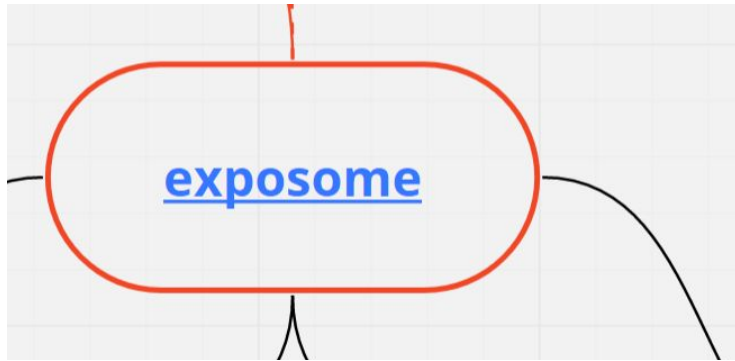
**Tools and approaches for analyzing the role of mitochondria in health, development and disease using human cerebral organoids** (Michał Liput et al, 2021)



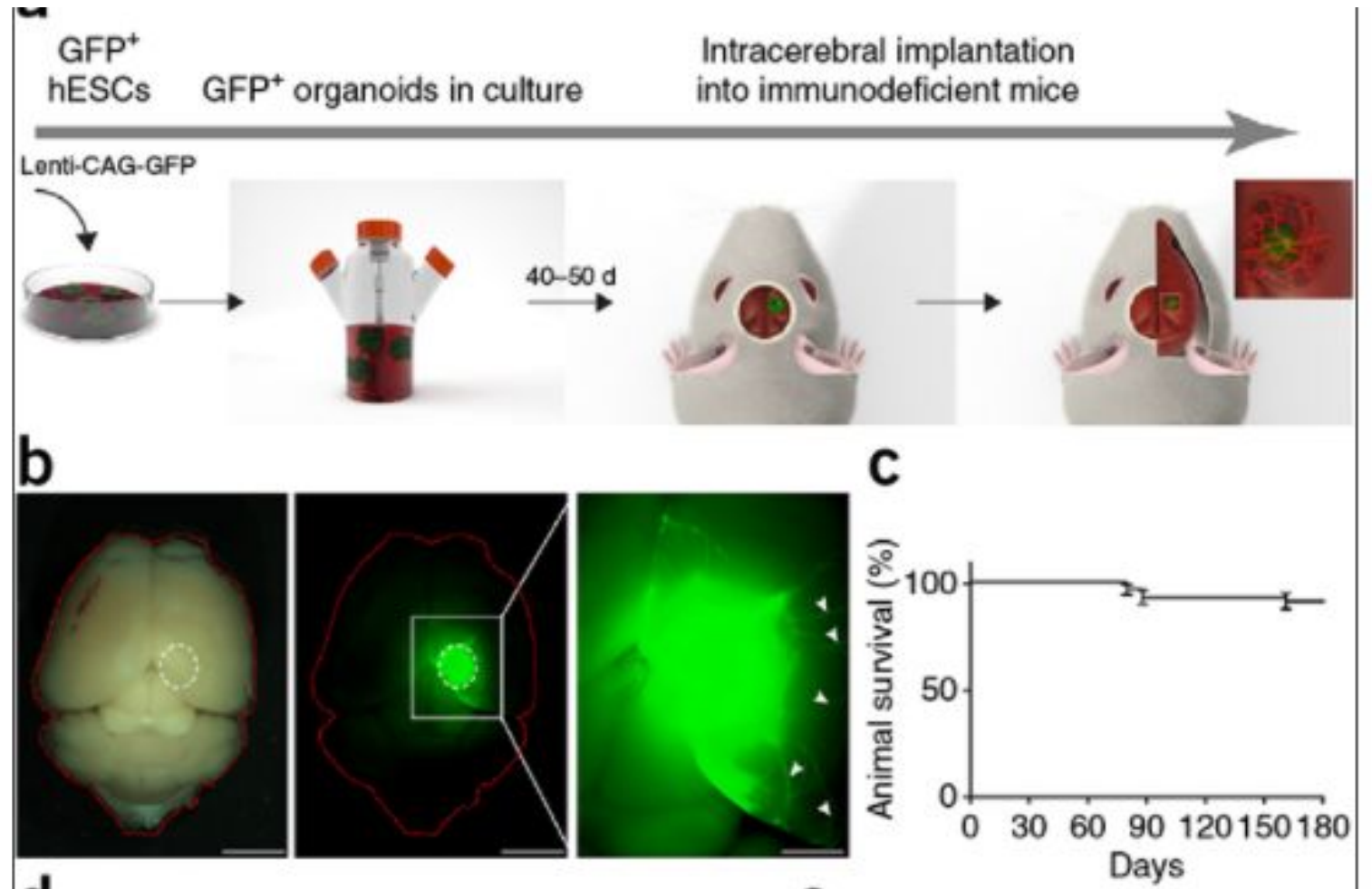


**Multicellular 3D Neurovascular Unit Model for Assessing Hypoxia and Neuroinflammation Induced Blood-Brain Barrier Dysfunction (Nzou G. et al., 2020)**

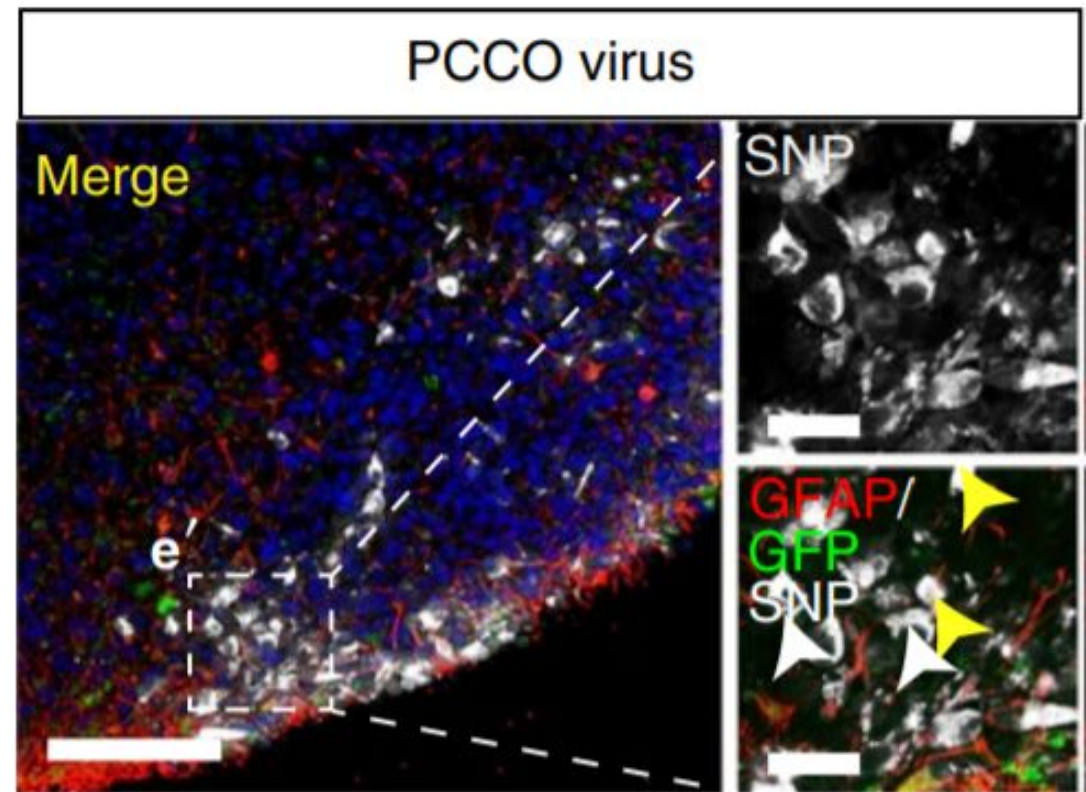
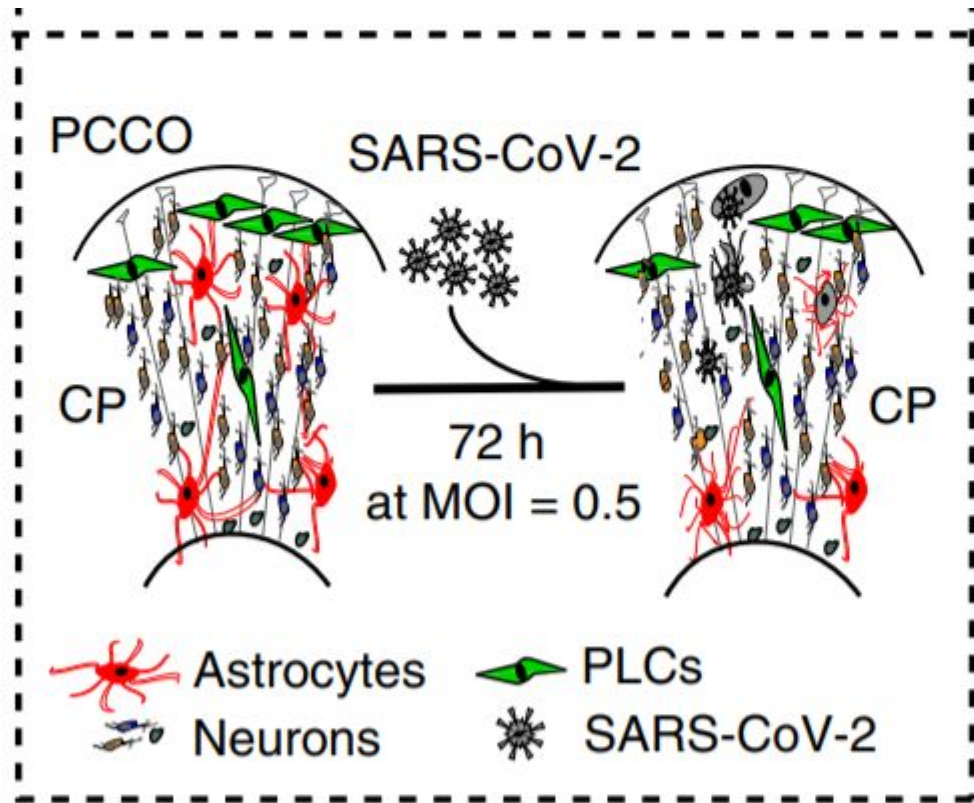




An *in vivo* model of functional and vascularized human brain organoids (Mansour, A. A. et al., 2018)







iPSC and organoids  
**(Pavel Denisov)**

Human tissue project





