

## Assembly-

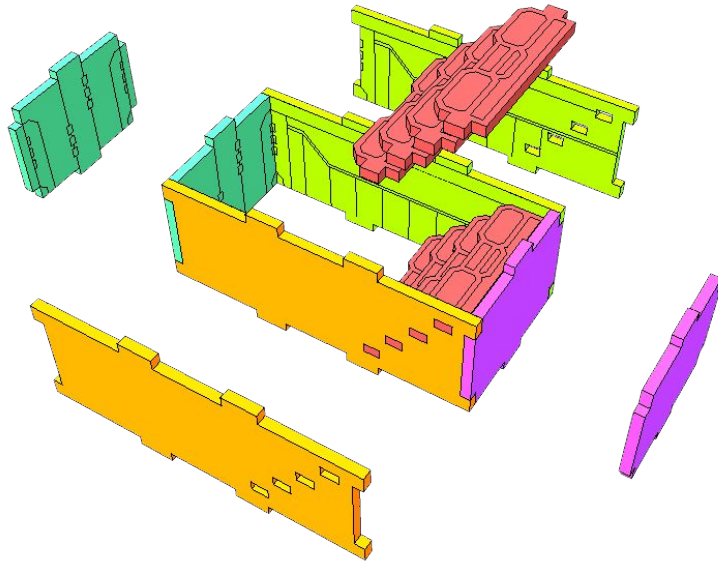
MDF and card are best assembled using PVA/white/tacky craft glue.  
Superglue will soak into the MDF and card and not adhere well

## Painting –

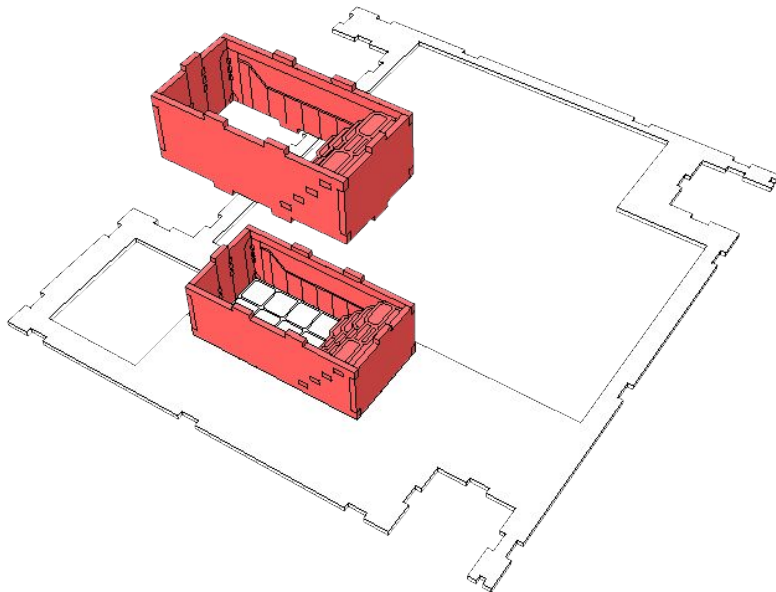
The MDF and card can be painted and we recommend:

1. Undercoat – Spray paint
  2. First coat - Acrylic paint for background colour
  3. Sealer – Gloss clear spray paint (this will help the painting in of the detail and protect the layers of paint below)
1. Detail highlight – Acrylic paint for text and figures
  2. Topcoat - Matt or satin clear spray paint

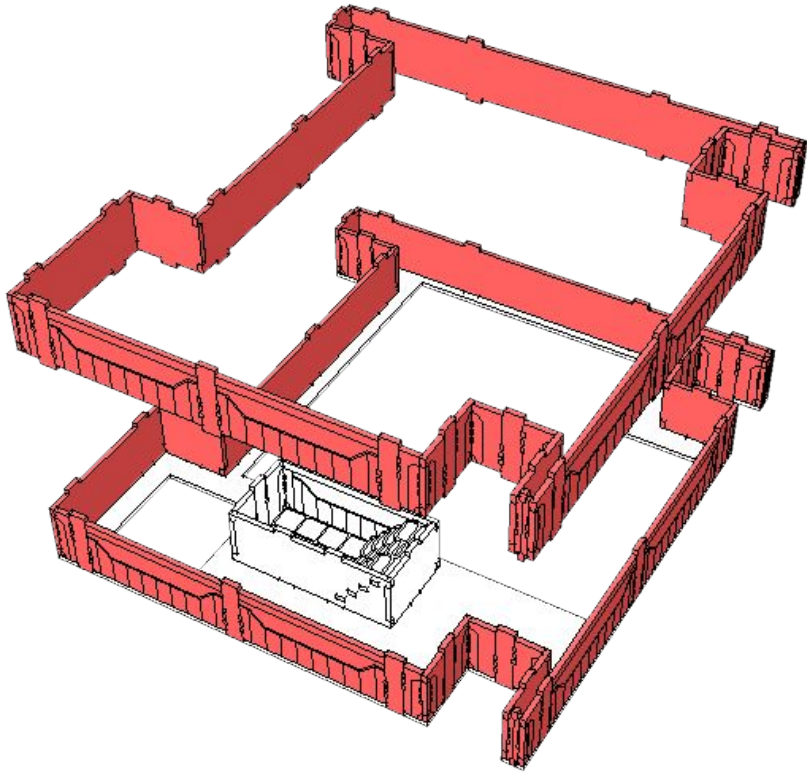
1



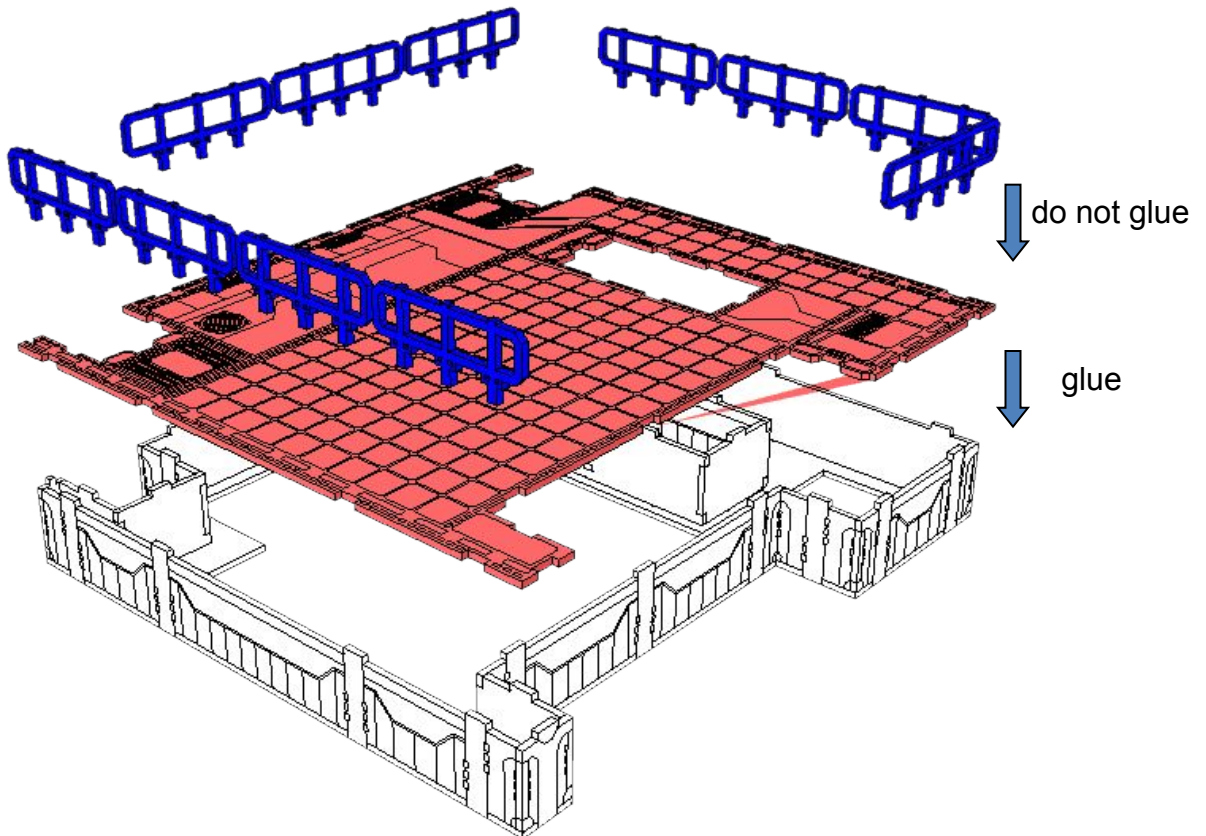
2



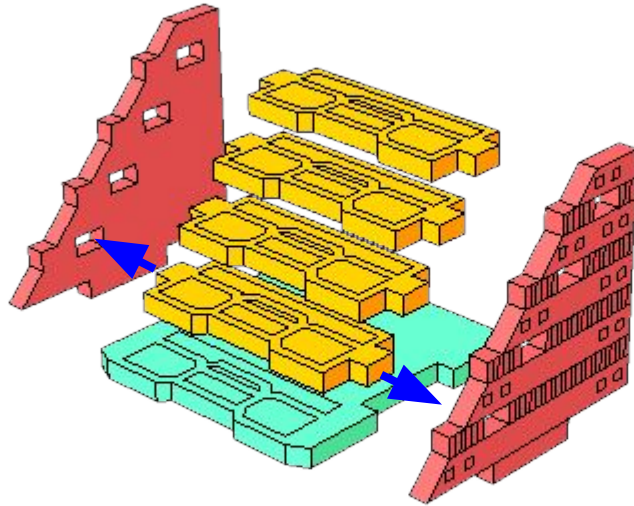
3



4



5



6

