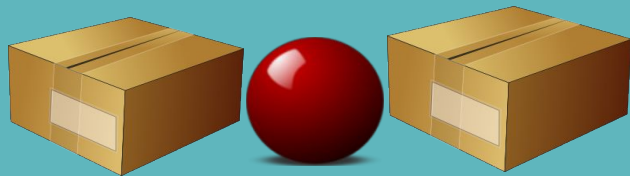
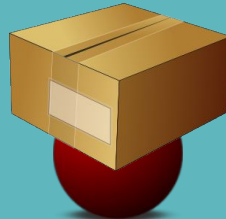


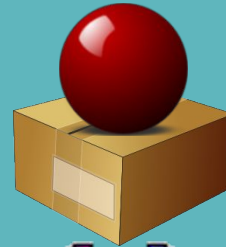
where's the ball?



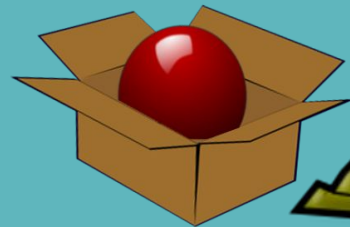
between



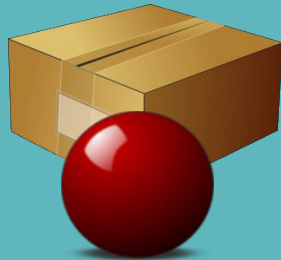
under



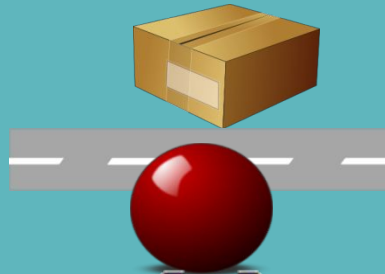
on



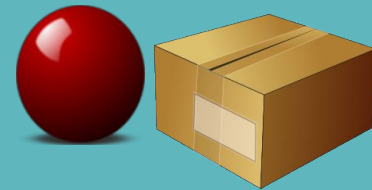
in



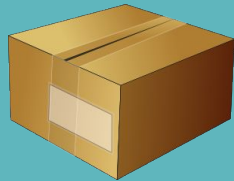
in front of



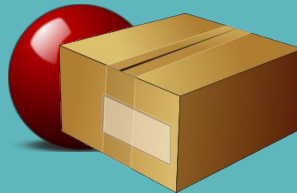
opposite



next to



above



behind



where's the ball?



between

in front of

in

behind

on

opposite

next to

under

above

THE BALL IS **NEXT TO** THE HOUSE.

where's the ball?



between

in front of

in

behind

on

opposite

next to

under

above

THE BALL IS **ON** THE BOX.

where's the ball?



between

in front of

in

behind

on

opposite

next to

under

above

THE BALL IS **BEHIND** THE HOUSE.

where's the ball?



between

in front of

in

behind

on

opposite

next to

under

above

THE BALL IS **IN FRONT OF** THE HOUSE.

where's the ball?



between

in front of

in

behind

on

opposite

next to

under

above

THE BALL IS **ABOV** THE
HOUSE. **E**

where's the ball?



between

in front of

in

behind

on

opposite

next to

under

above

THE BALL IS BETWEEN...
THE HOUSE AND THE TREE.

where's the ball?



between

in front of

in

behind

on

opposite

next to

under

above

THE BALL IS **IN** THE HOUSE.

where's the ball?



between

in front of

in

behind

on

opposite

next to

under

above

THE BALL IS **OPPOSITE** THE HOUSE.

where's the ball?



between

in front of

in

behind

on

opposite

next to

under

above

THE BALL IS **UNDER**
WINNIE.

where's the ball?



between

in front of

in

behind

on

opposite

next to

under

above

THE BALL IS **ON** THE
CHAIR.

where's the ball?



between

in front of

in

behind

on

opposite

next to

under

above

THE BALL IS **IN** THE BOX.

where's the ball?



between

in front of

in

behind

on

opposite

next to

under

above

THE BALL IS **BETWEEN**... THE
GIRLS.

where's the ball?



between

in front of

in

behind

on

opposite

next to

under

above

THE BALL IS **UNDE** THE BOX.

R

where's the ball?



between

in front of

in

behind

on

opposite

next to

under

above

THE BALL IS **IN FRONT OF**

..... **THE**

TREE.

where's the ball?



between

in front of

in

behind

on

opposite

next to

under

above

THE BALL IS **ABOV**
THE TREE. **E**

where's the ball?



between

in front of

in

behind

on

opposite

next to

under

above

THE BALL IS **UNDER** THE
CHAIR. **R**

where's the ball?



between

in front of

in

behind

on

opposite

next to

under

above

THE BALL IS **BEHIN**
THE TREE. **D**

where's the ball?



between

in front of

in

behind

on

opposite

next to

under

above

THE BALL IS **NEXT TO** _____
THE TREE.

where's the ball?



between

in front of

in

behind

on

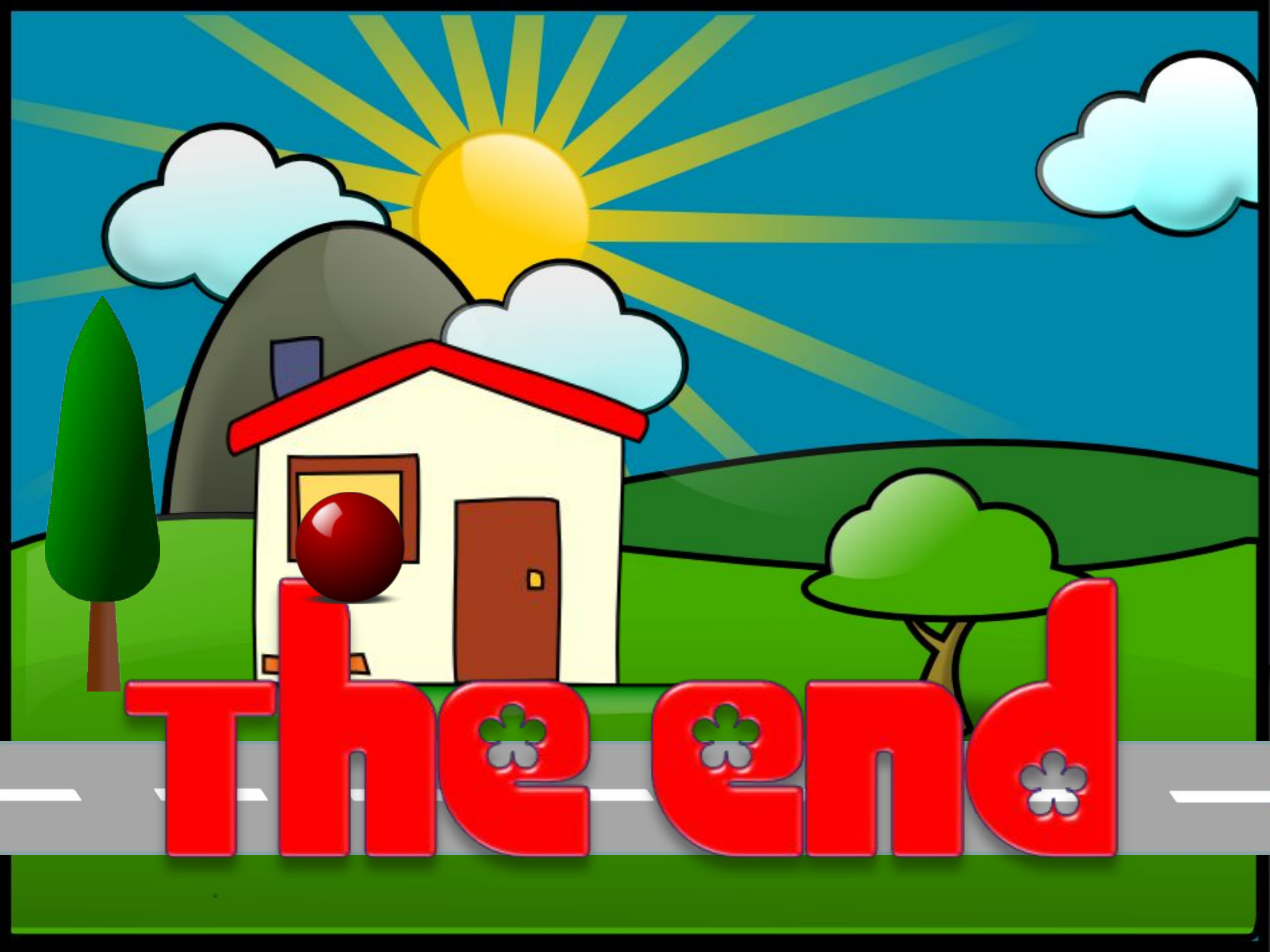
opposite

next to

under

above

THE BALL IS **OPPOSITE** THE TAXI.



The end