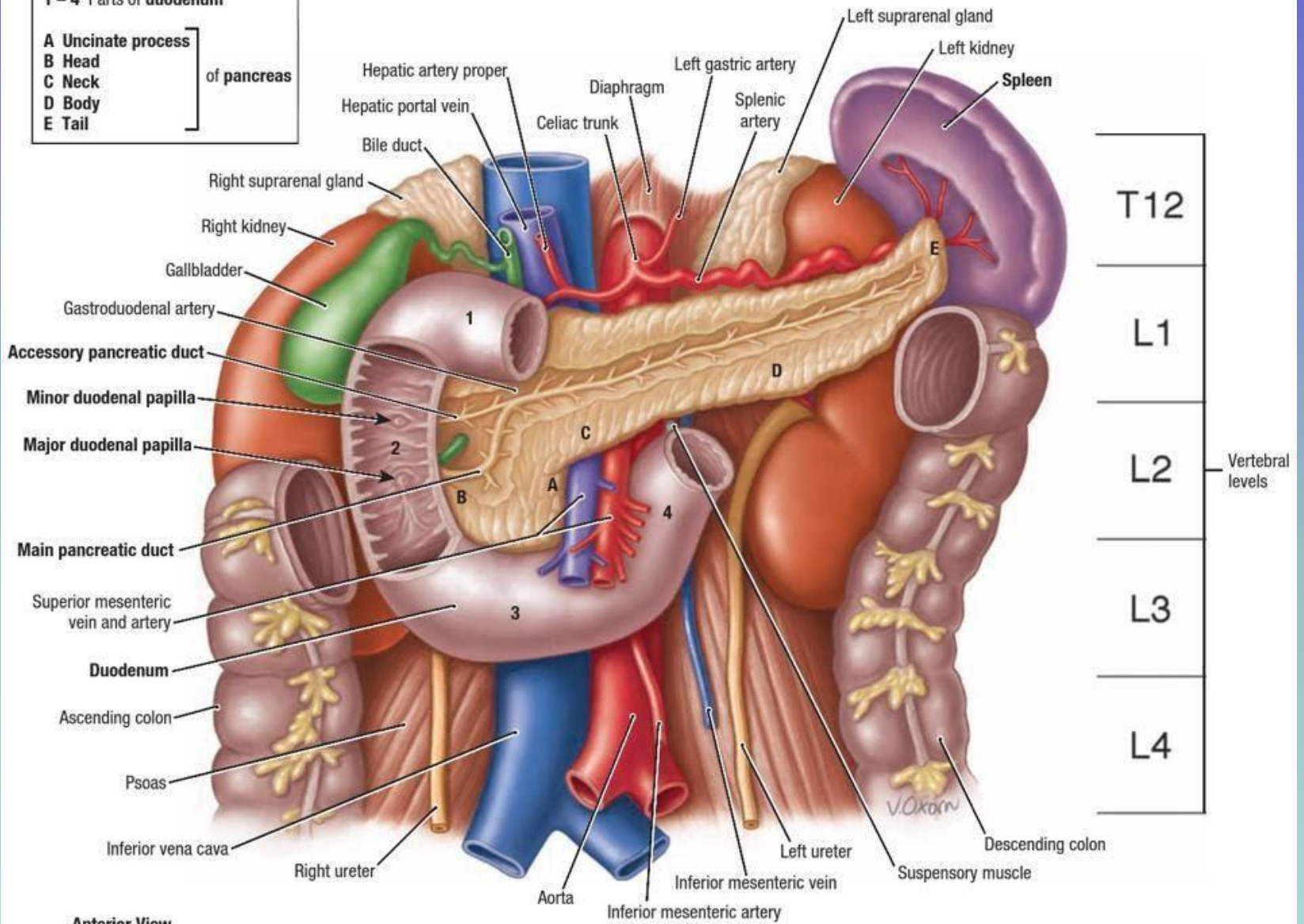


Anatomy of Small Intestine

1 - 4 Parts of duodenum

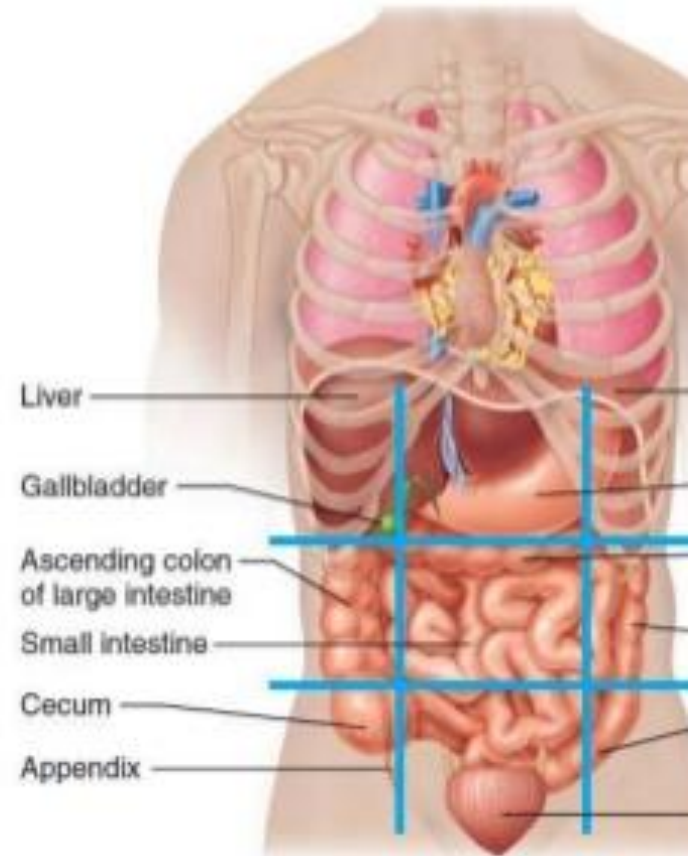
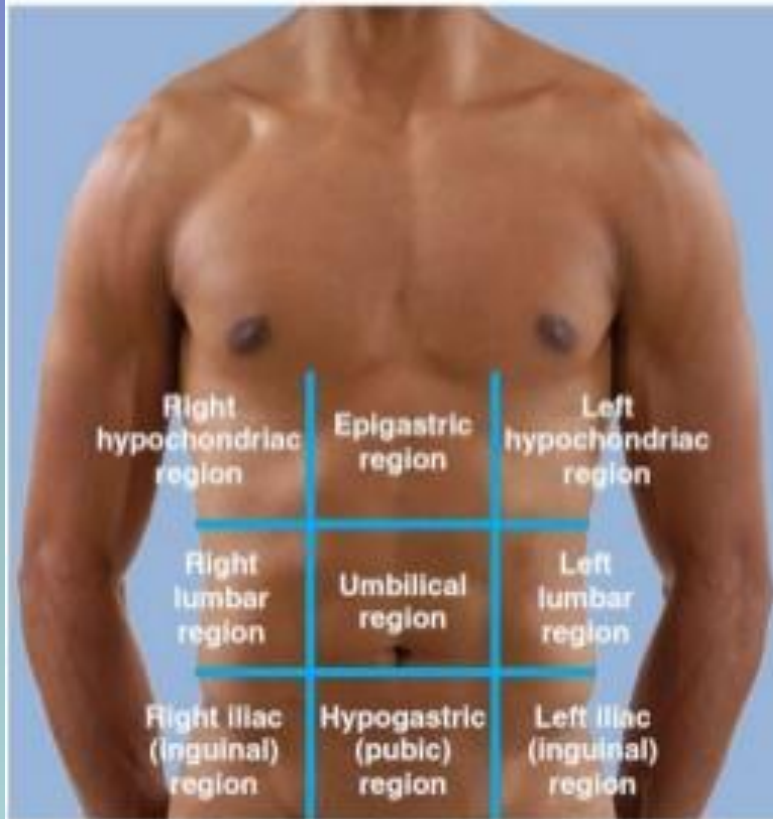
- A Uncinate process
 - B Head
 - C Neck
 - D Body
 - E Tail
- of pancreas



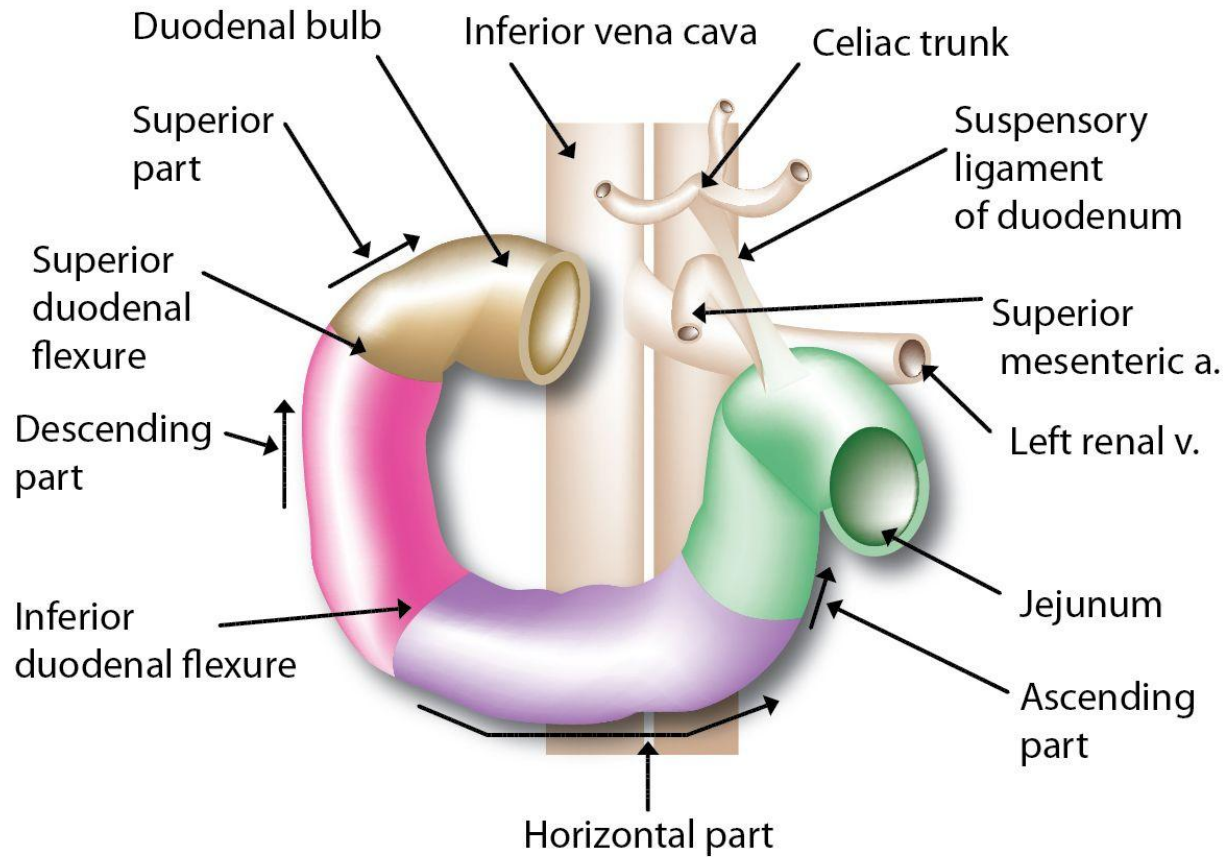
2.37

PARTS AND RELATIONSHIPS OF PANCREAS AND DUODENUM

A. Pancreas and duodenum in situ.



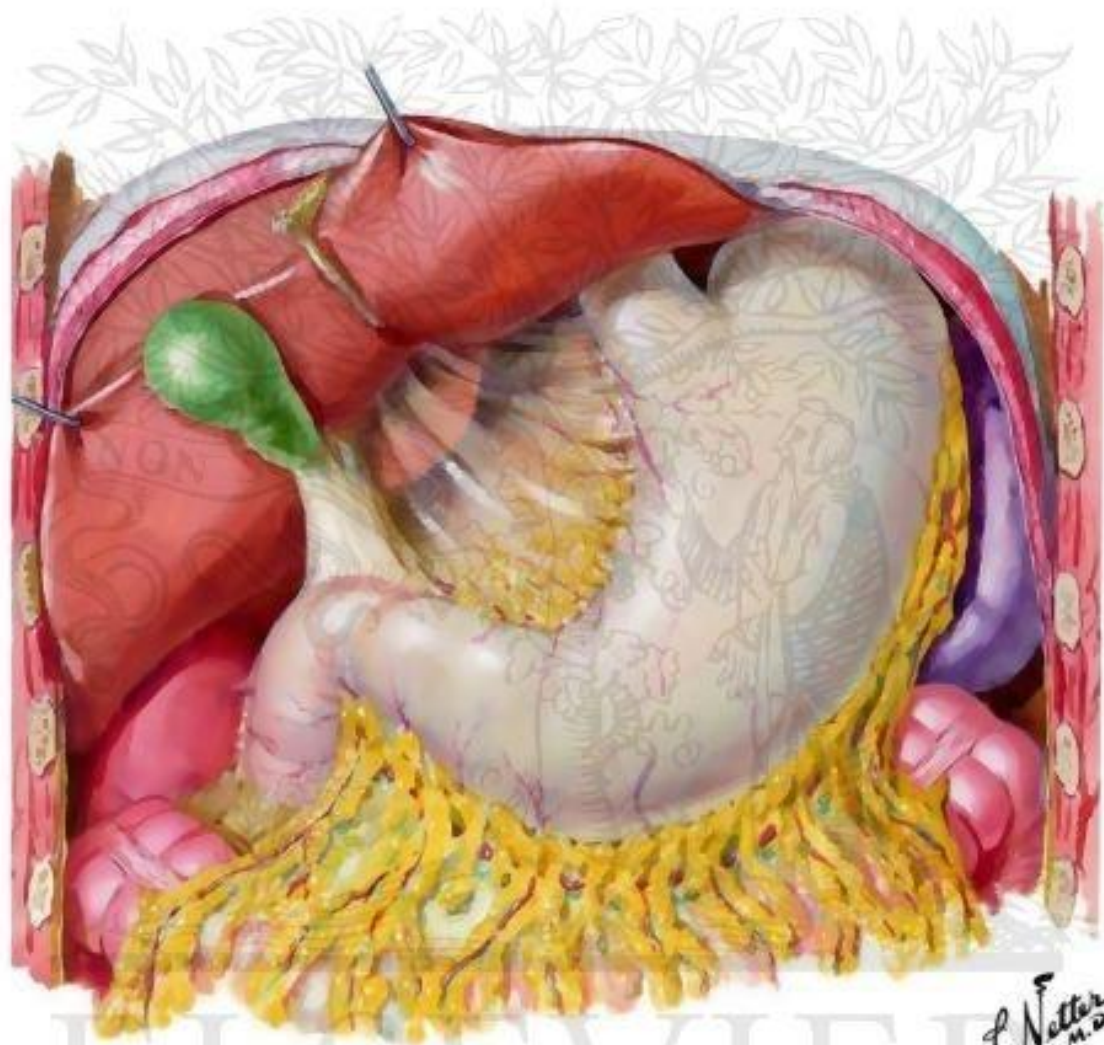
Duodenum



HELP

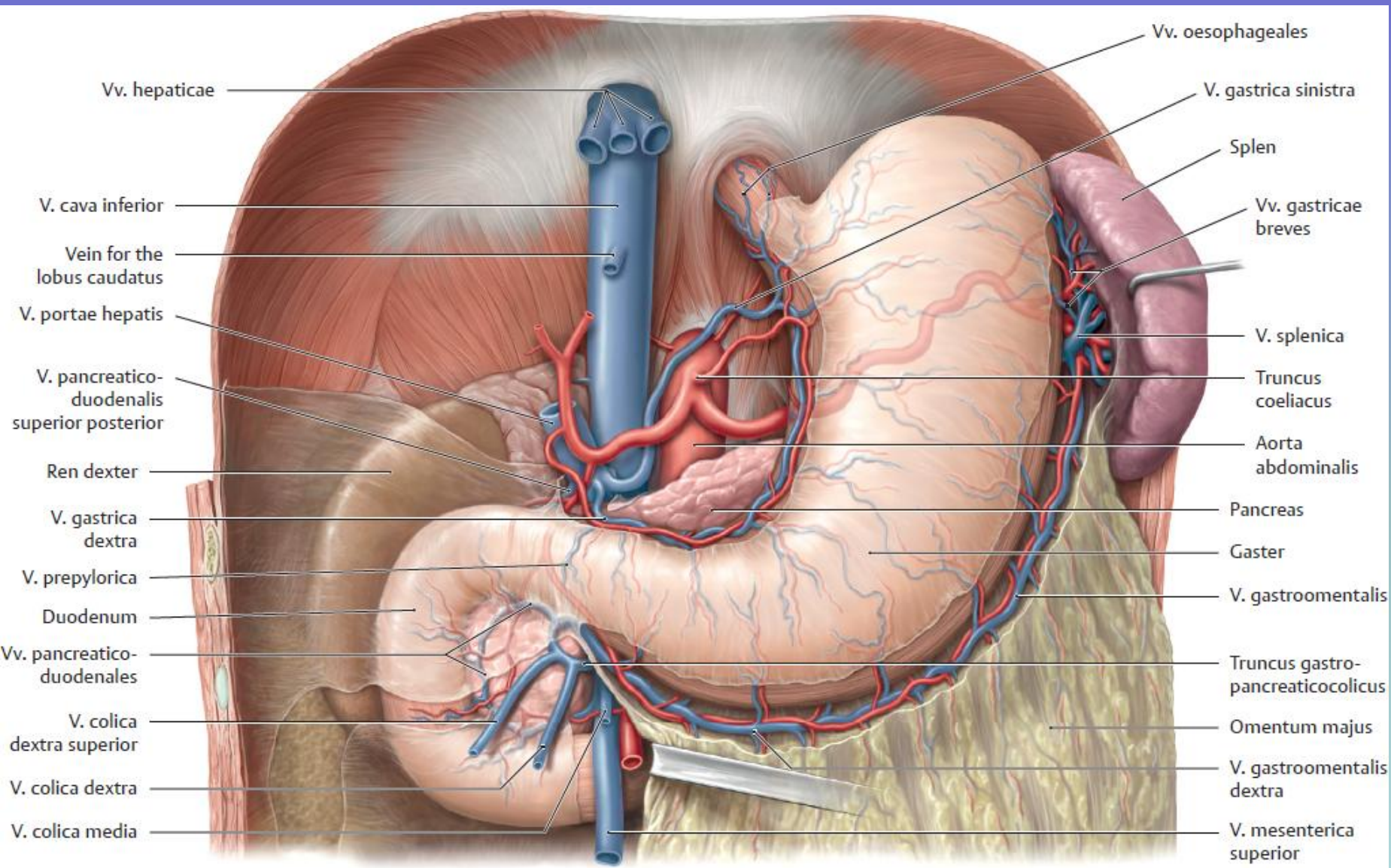
Health Education Library for People

©2013 www.healthlibrary.com

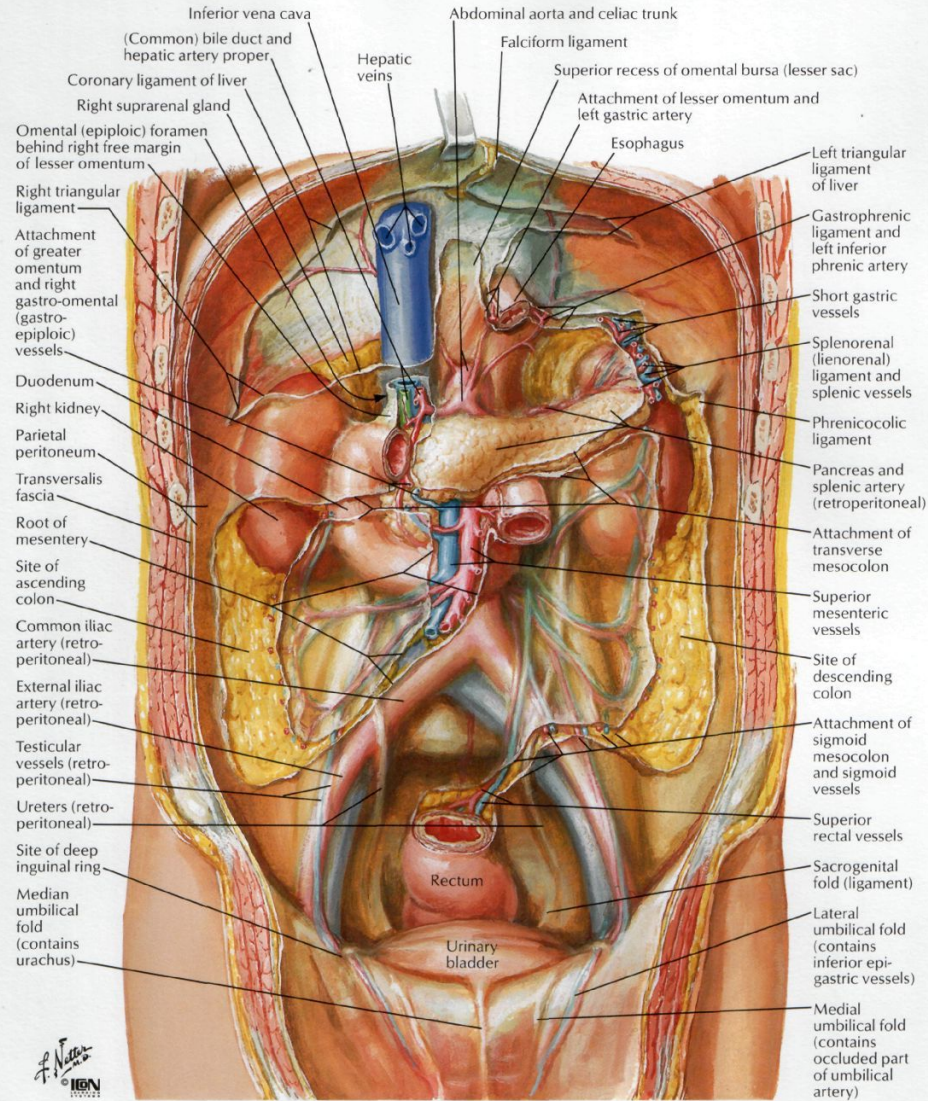


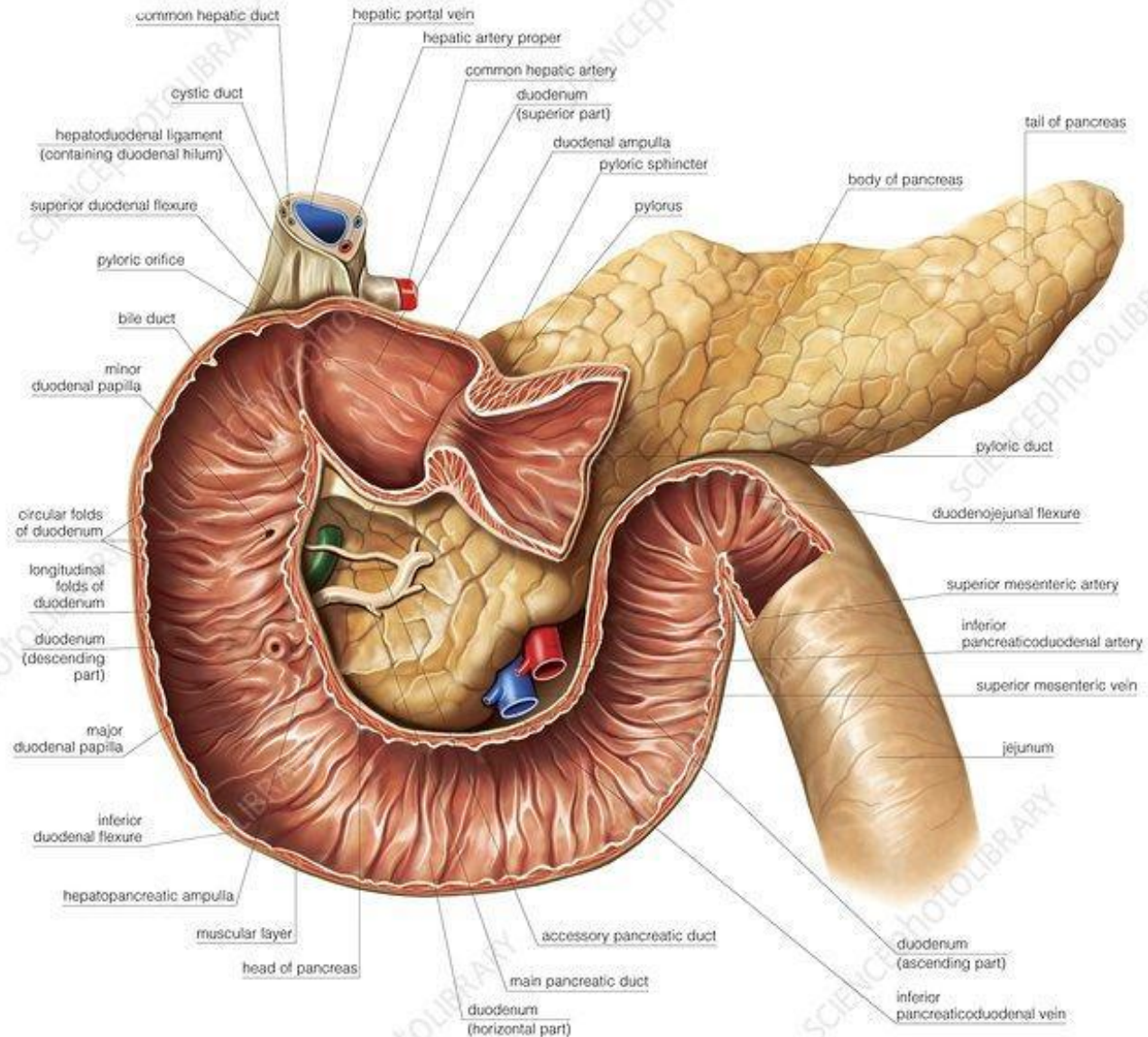
ELSEVIER

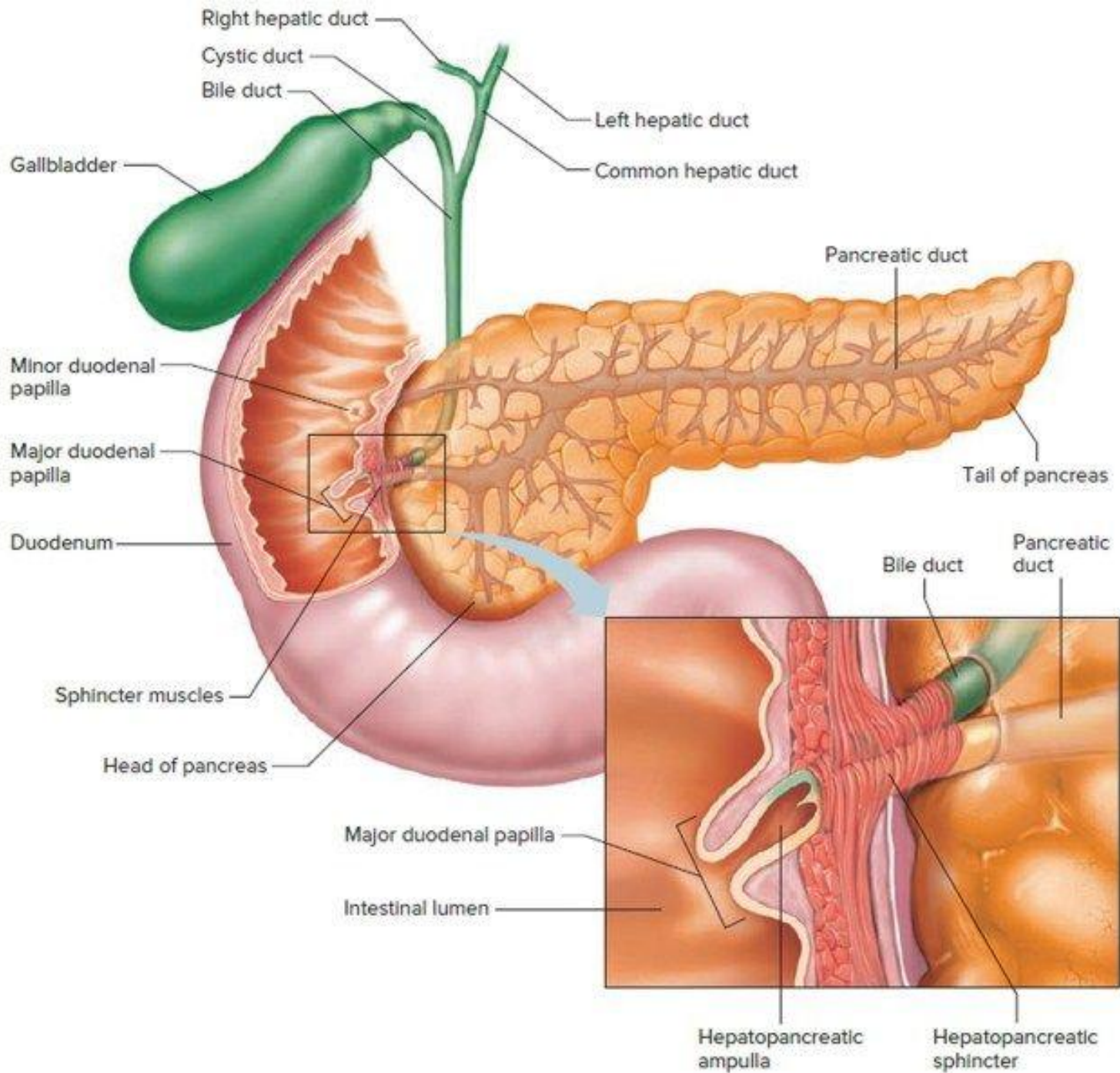
F. Netter
M.D.

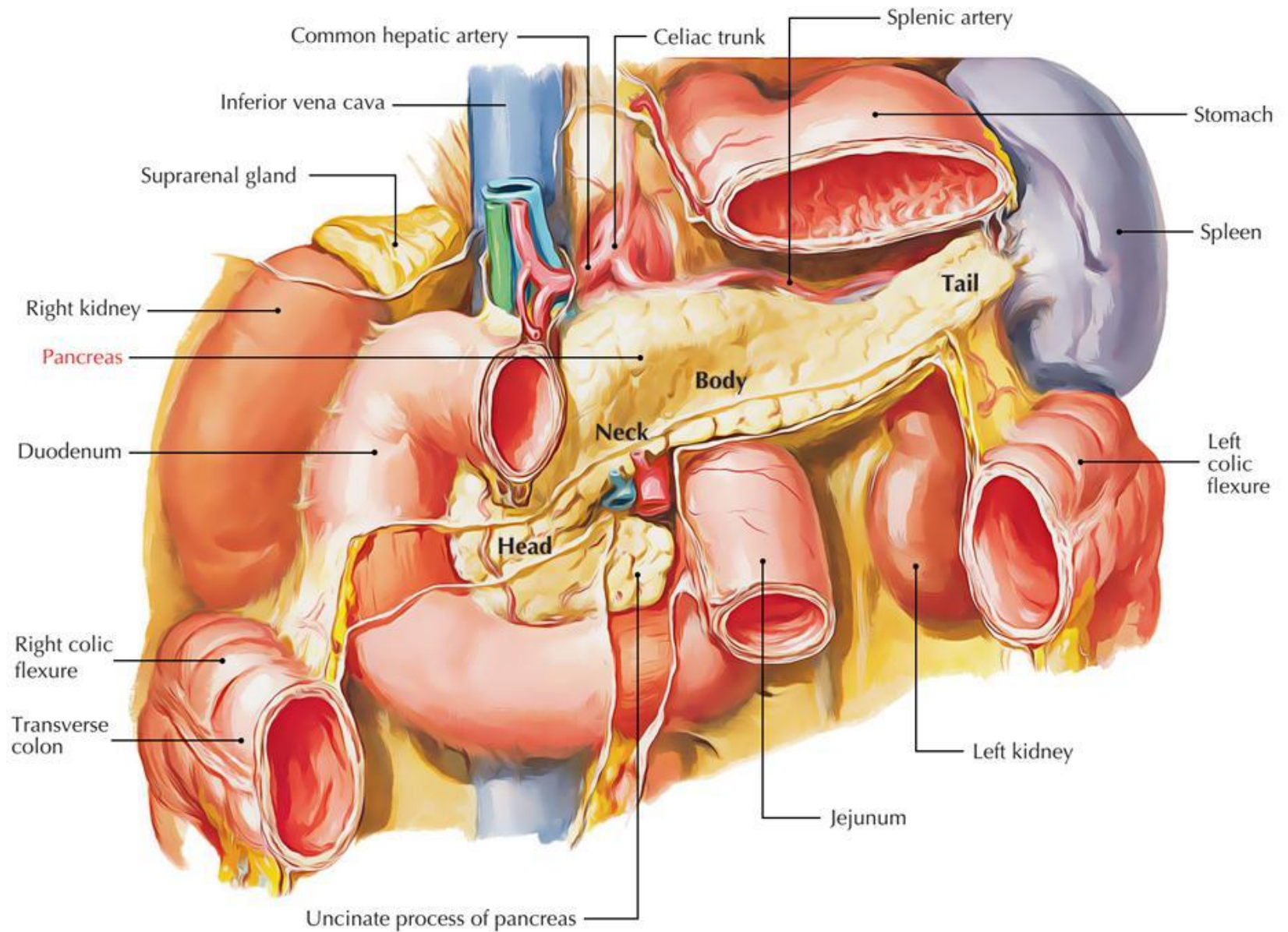


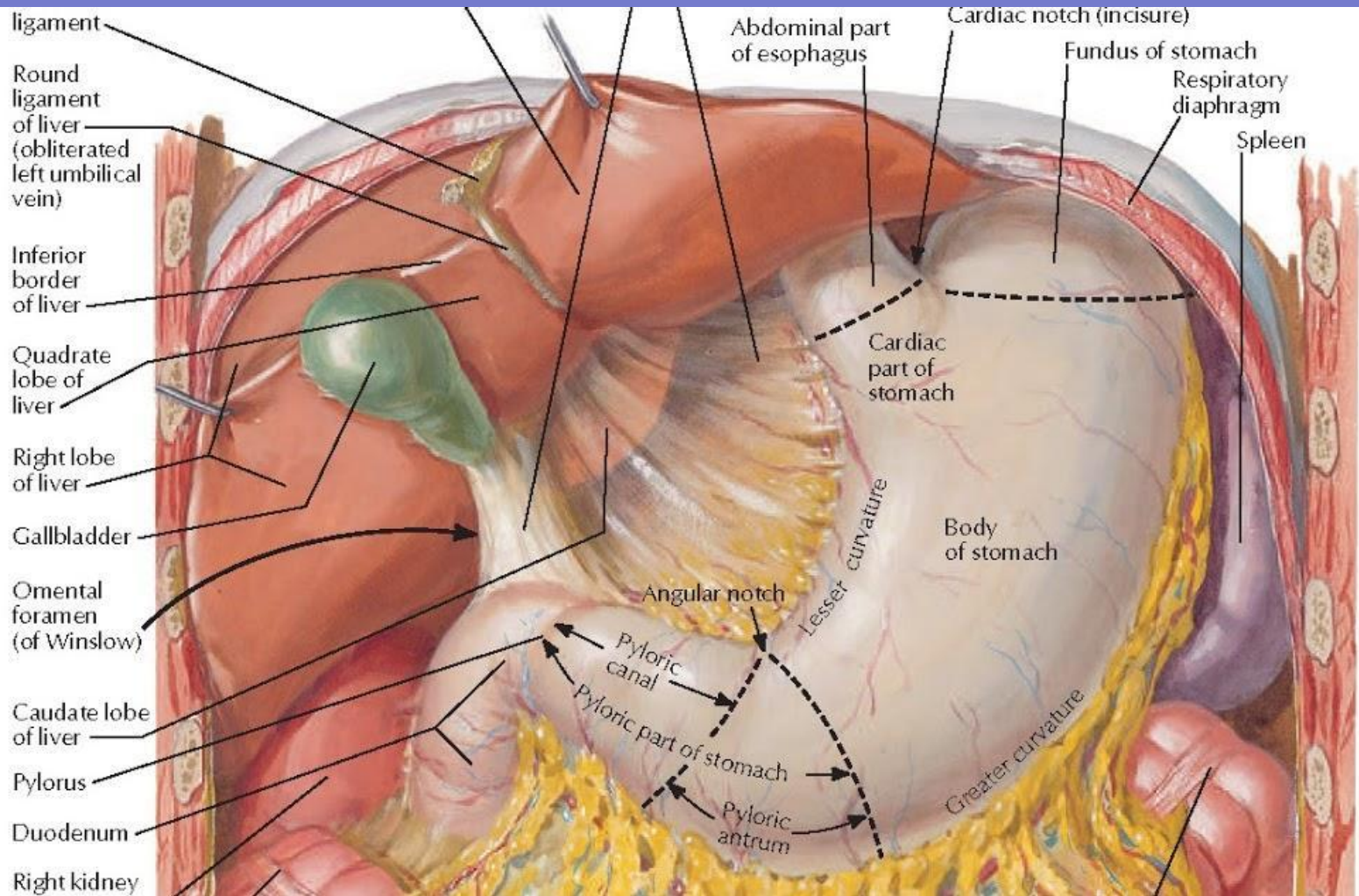
Peritoneum of Posterior Abdominal Wall





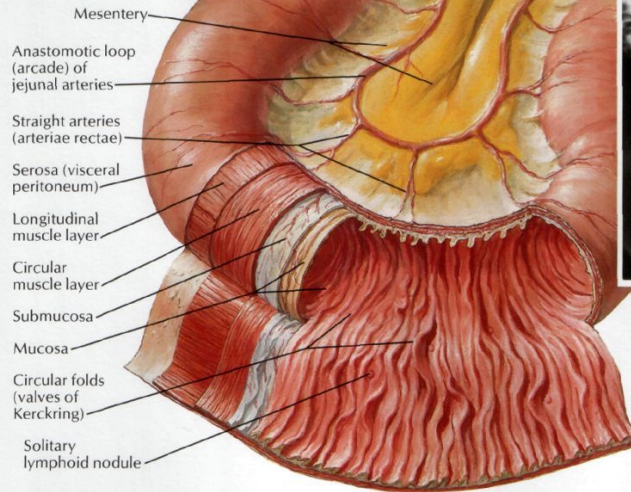






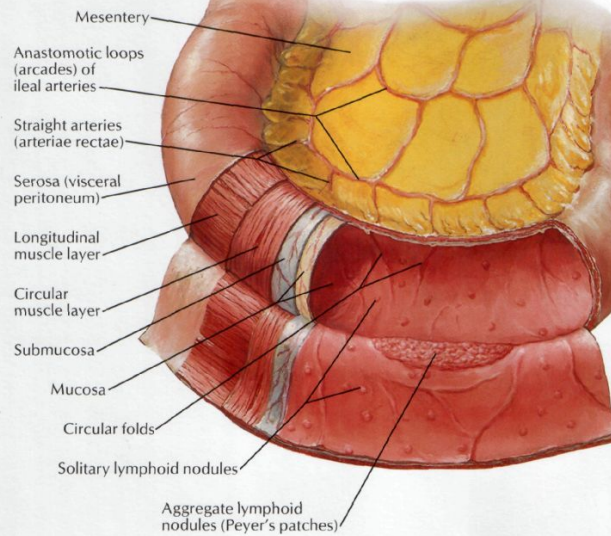
Mucosa and Musculature of Small Intestine

Jejunum



Barium radiograph of jejunum

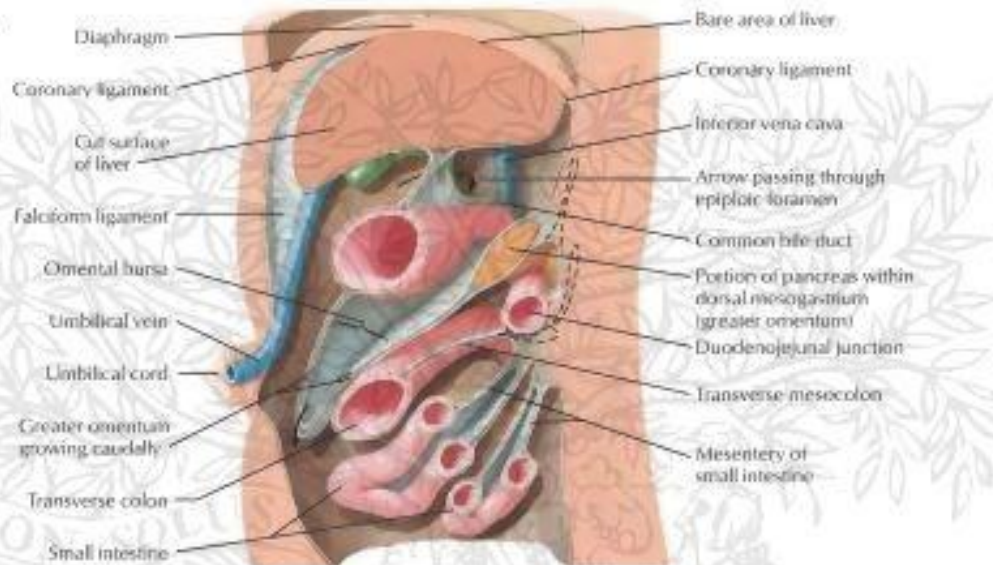
Ileum



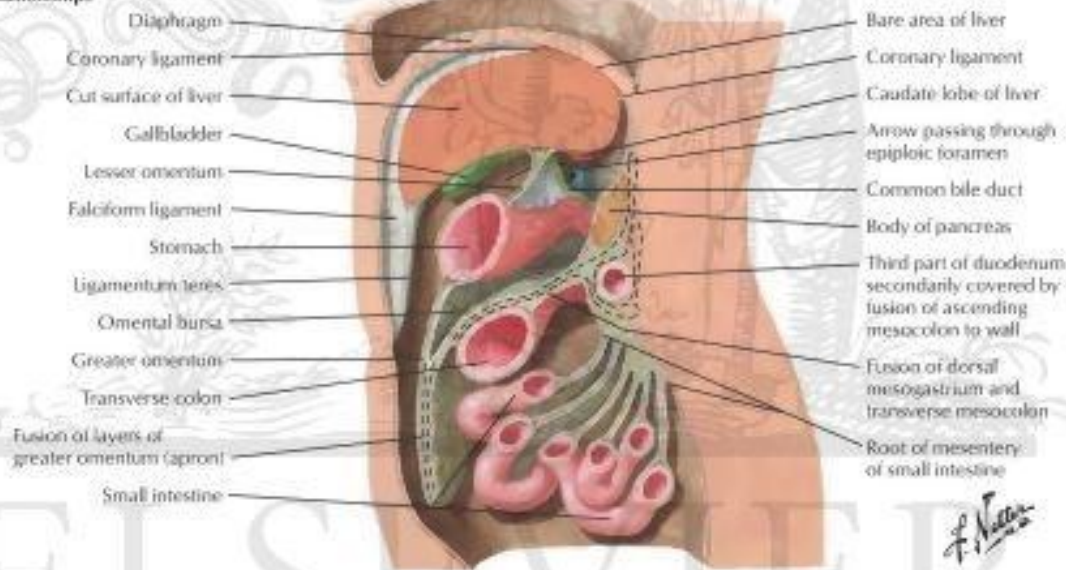
Barium radiograph of ileum

F. Netter M.D.
© IG 1992

3 to 4 months



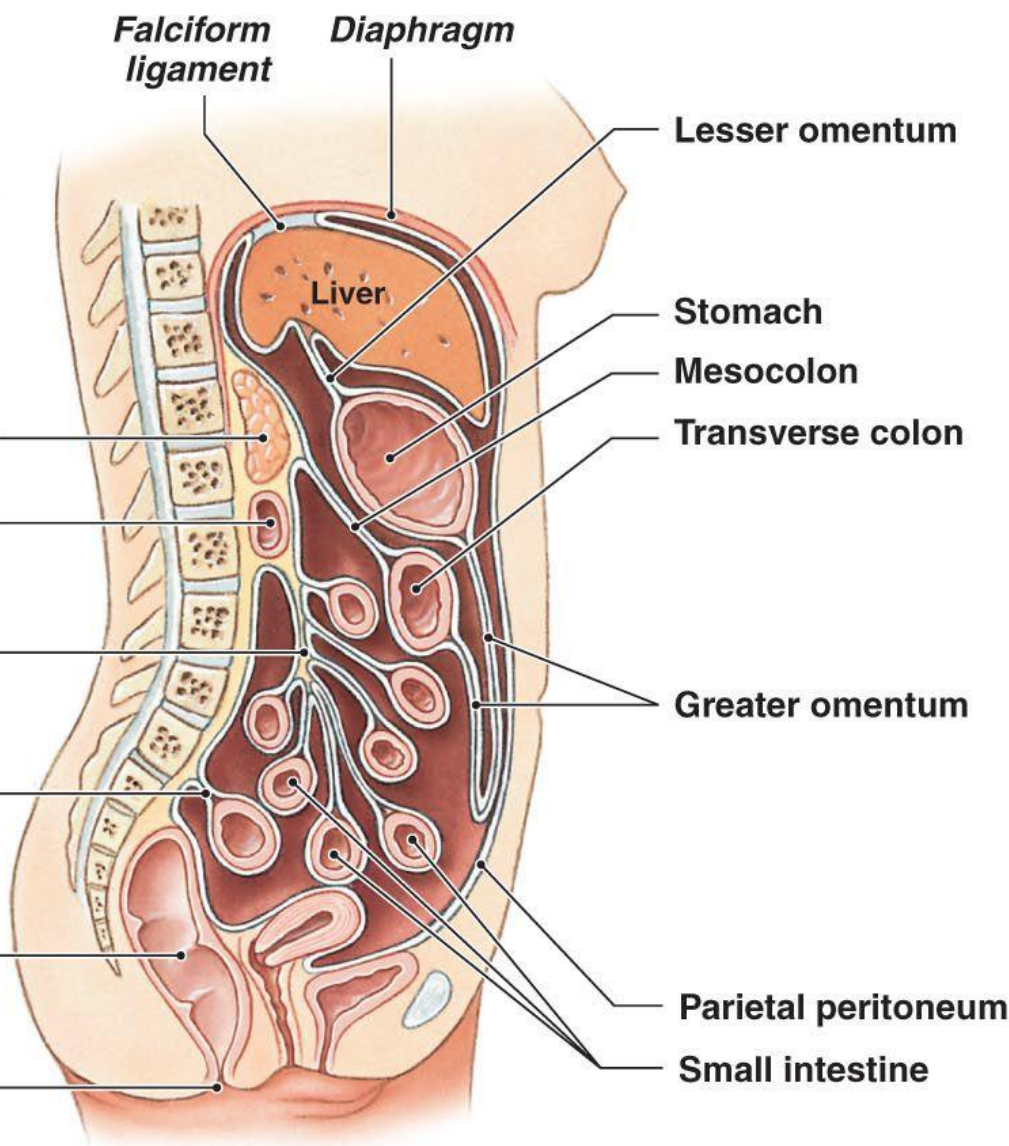
Adult relationships



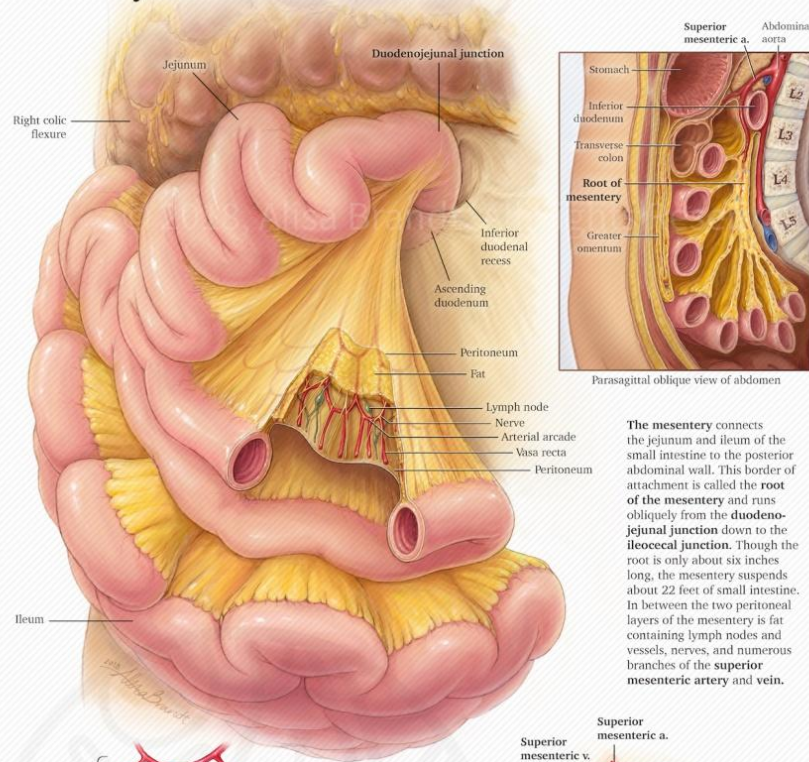
ELSEVIER

A sagittal section showing the orientation of the mesenteries in an adult

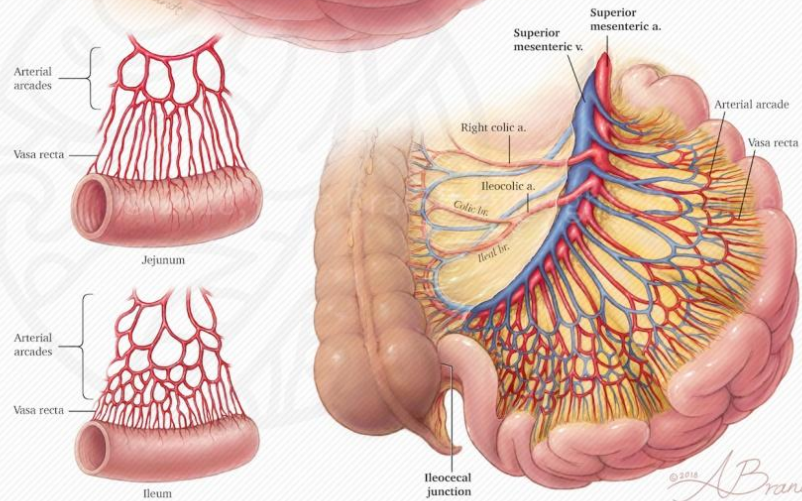
The mesentery associated with the initial portion of the small intestine and the pancreas fuses with the posterior abdominal wall



Mesentery & Mesenteric Vessels of the Small Intestine



The mesentery connects the jejunum and ileum of the small intestine to the posterior abdominal wall. This border of attachment is called the **root of the mesentery** and runs obliquely from the **duodenojejunal junction** down to the **ileocecal junction**. Though the root is only about six inches long, the mesentery suspends about 22 feet of small intestine. In between the two peritoneal layers of the mesentery is fat containing lymph nodes and vessels, nerves, and numerous branches of the **superior mesenteric artery and vein**.

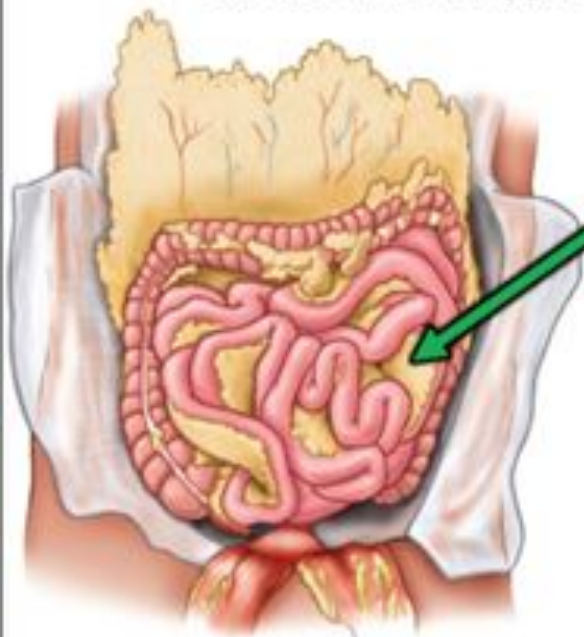


Overview of Abdominal Cavity

Peritoneal ligaments

Mesentery proper—mesentery of the small intestine

- contains varying amounts of fat
- anchored from upper left to lower right



~MDA 220



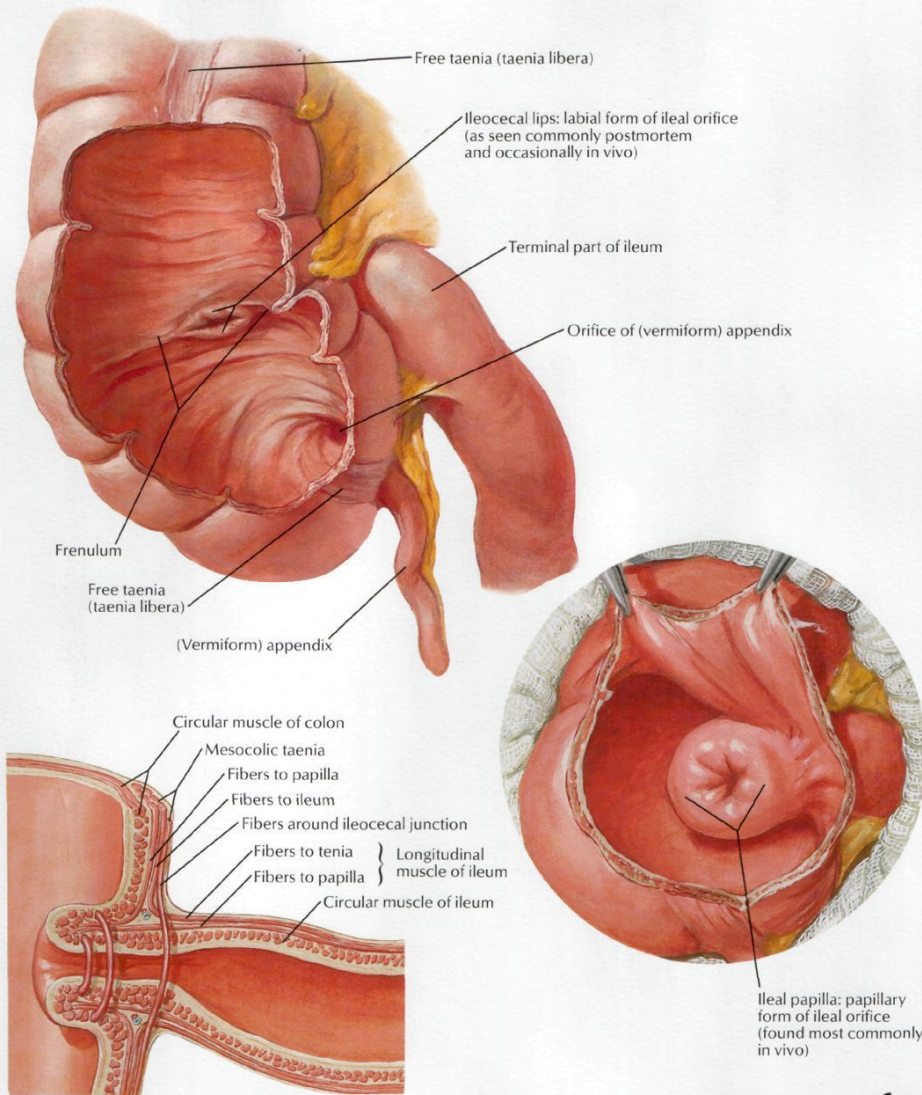
N 265



N 321

"Root of mesentery"
-origin from posterior
abdominal wall

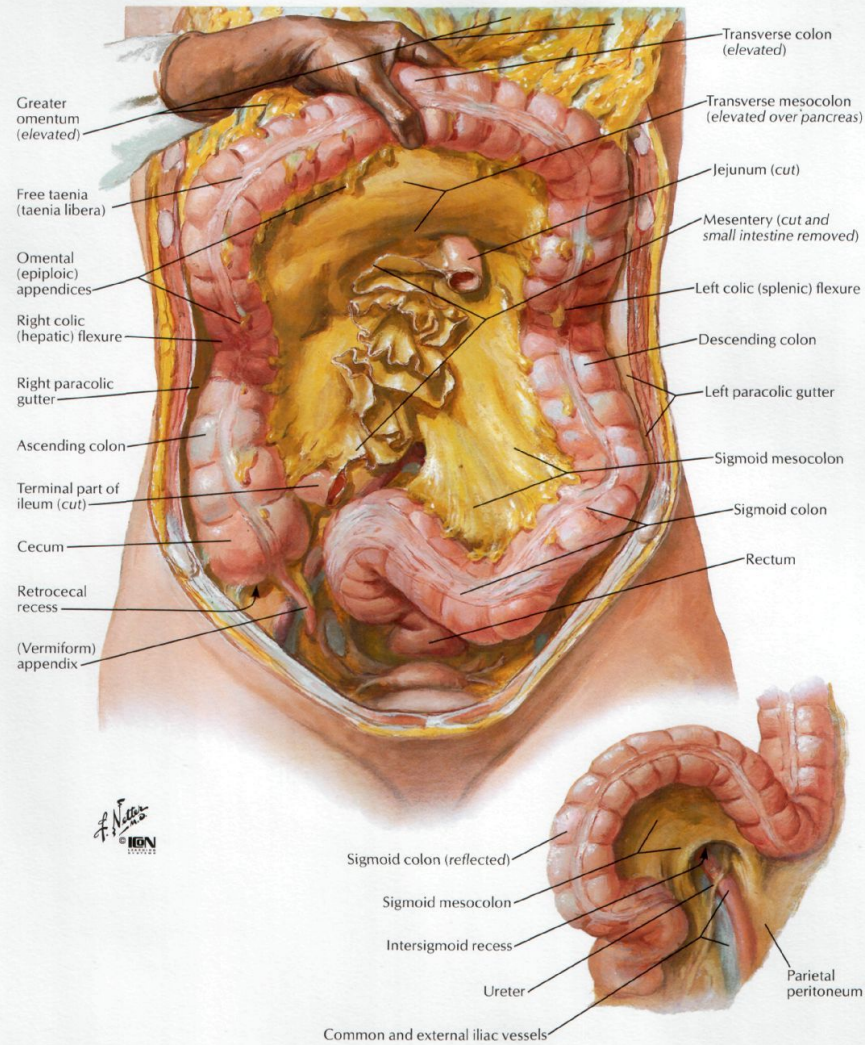
Ileocecal Region (continued)

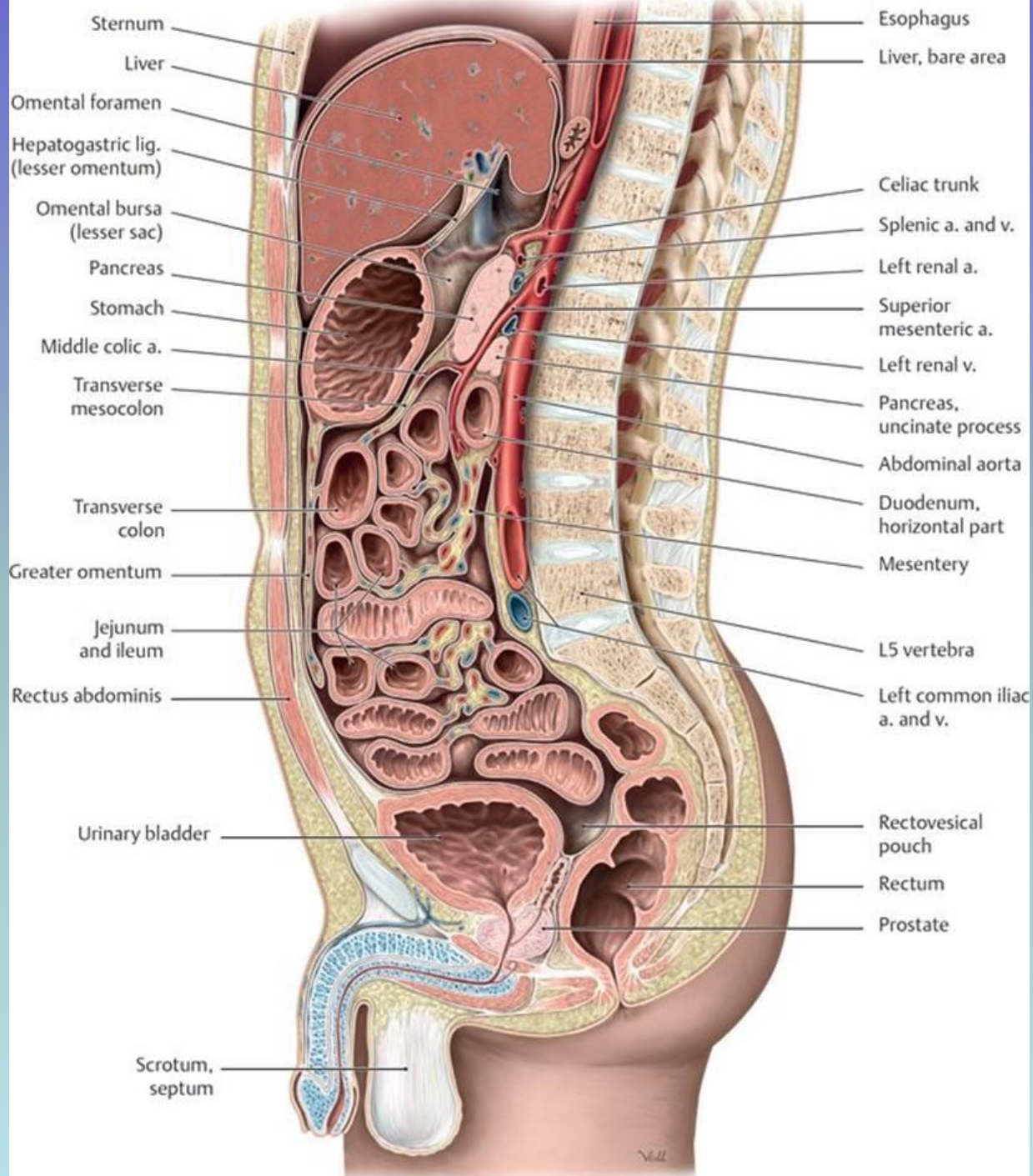


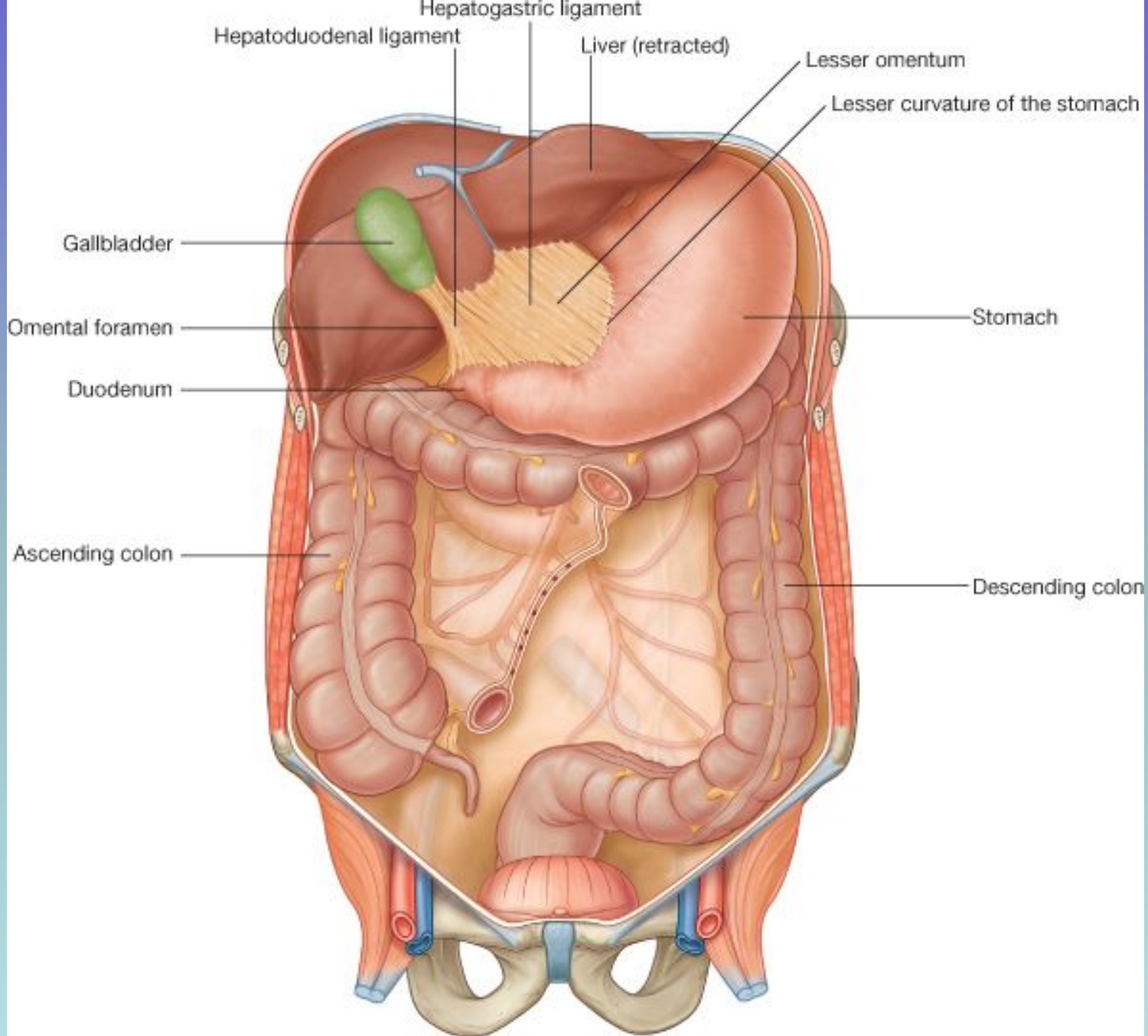
Schema of muscle fibers at ileal orifice

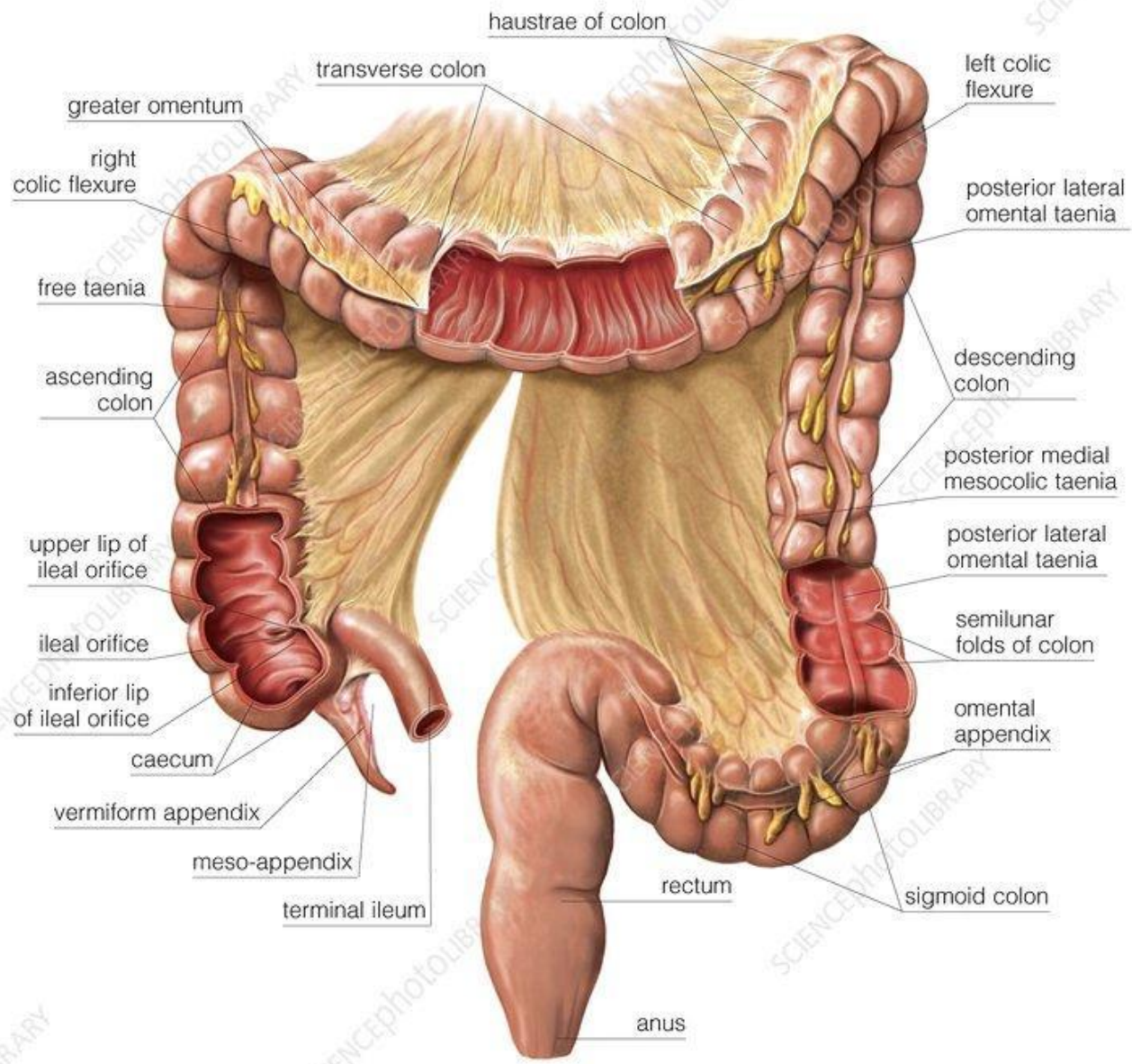


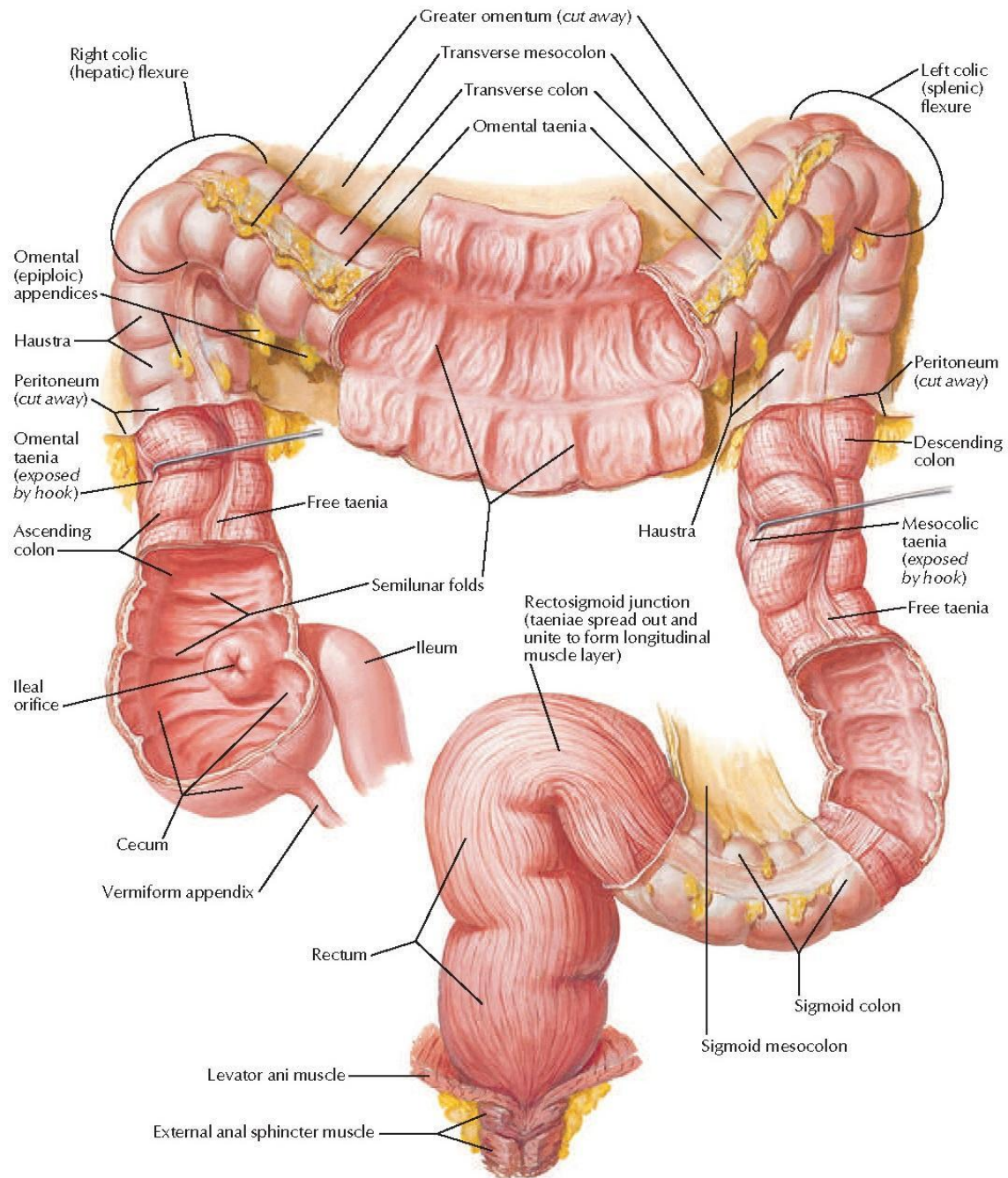
Mesenteric Relations of Intestines (continued)

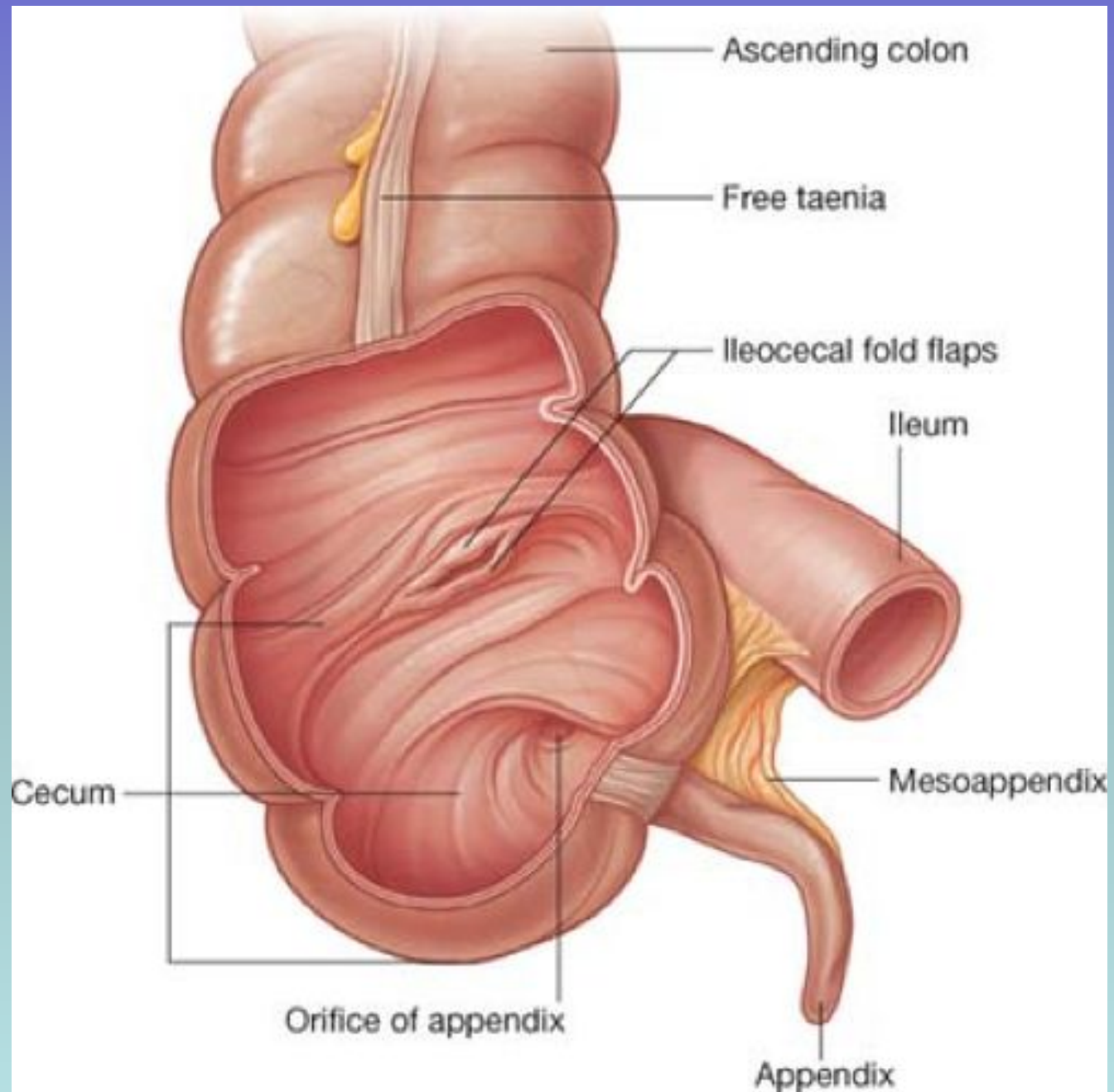




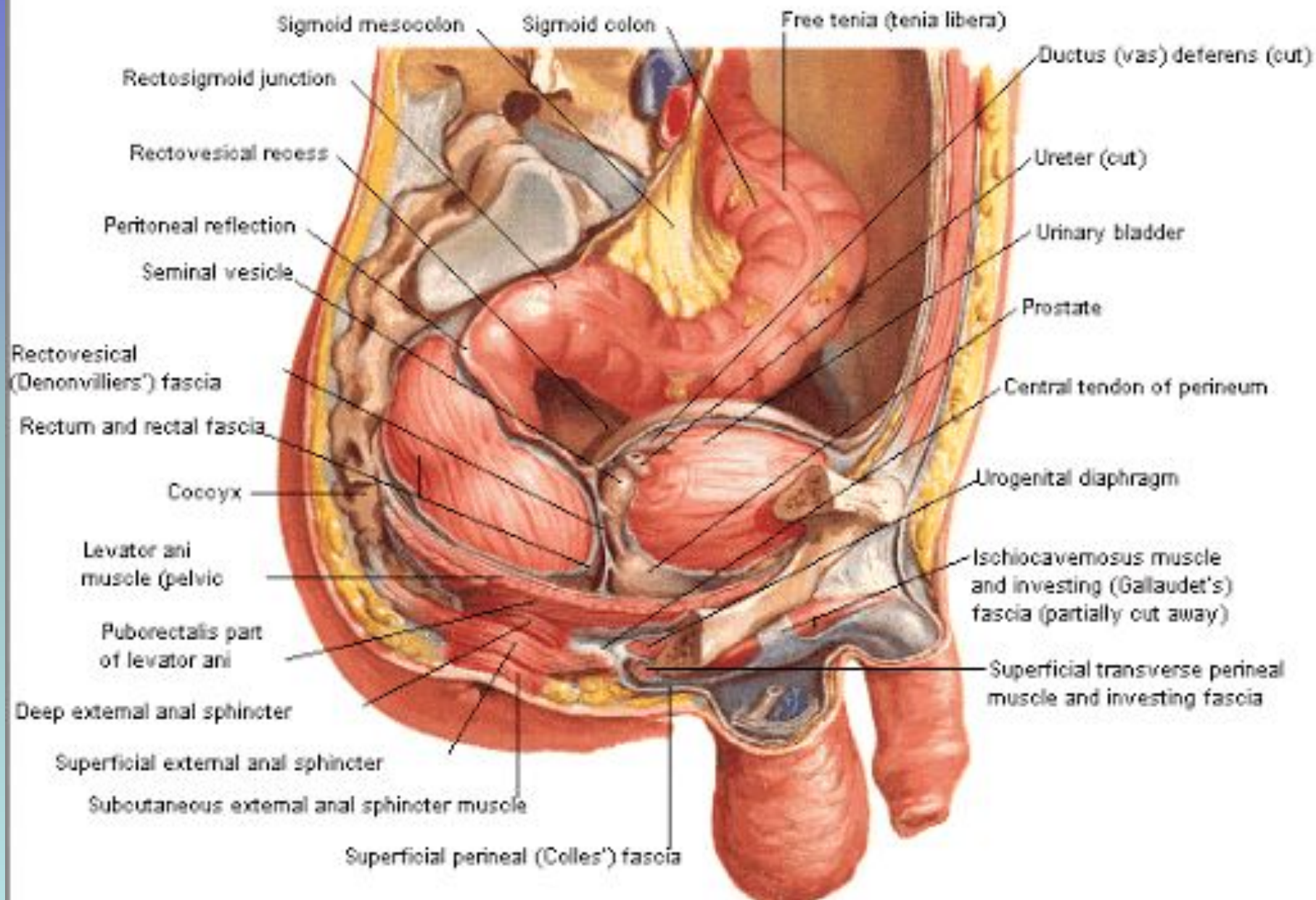




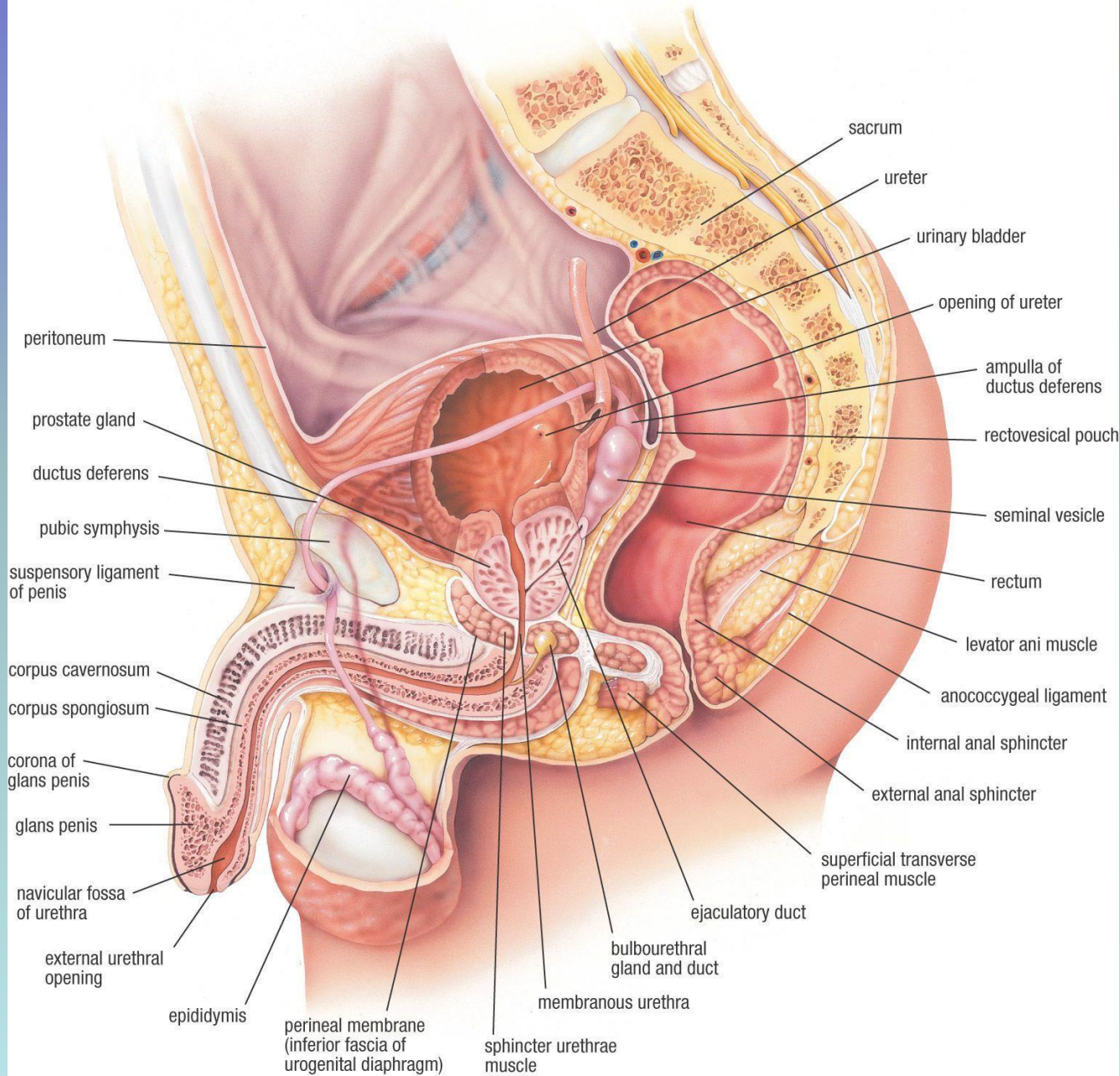


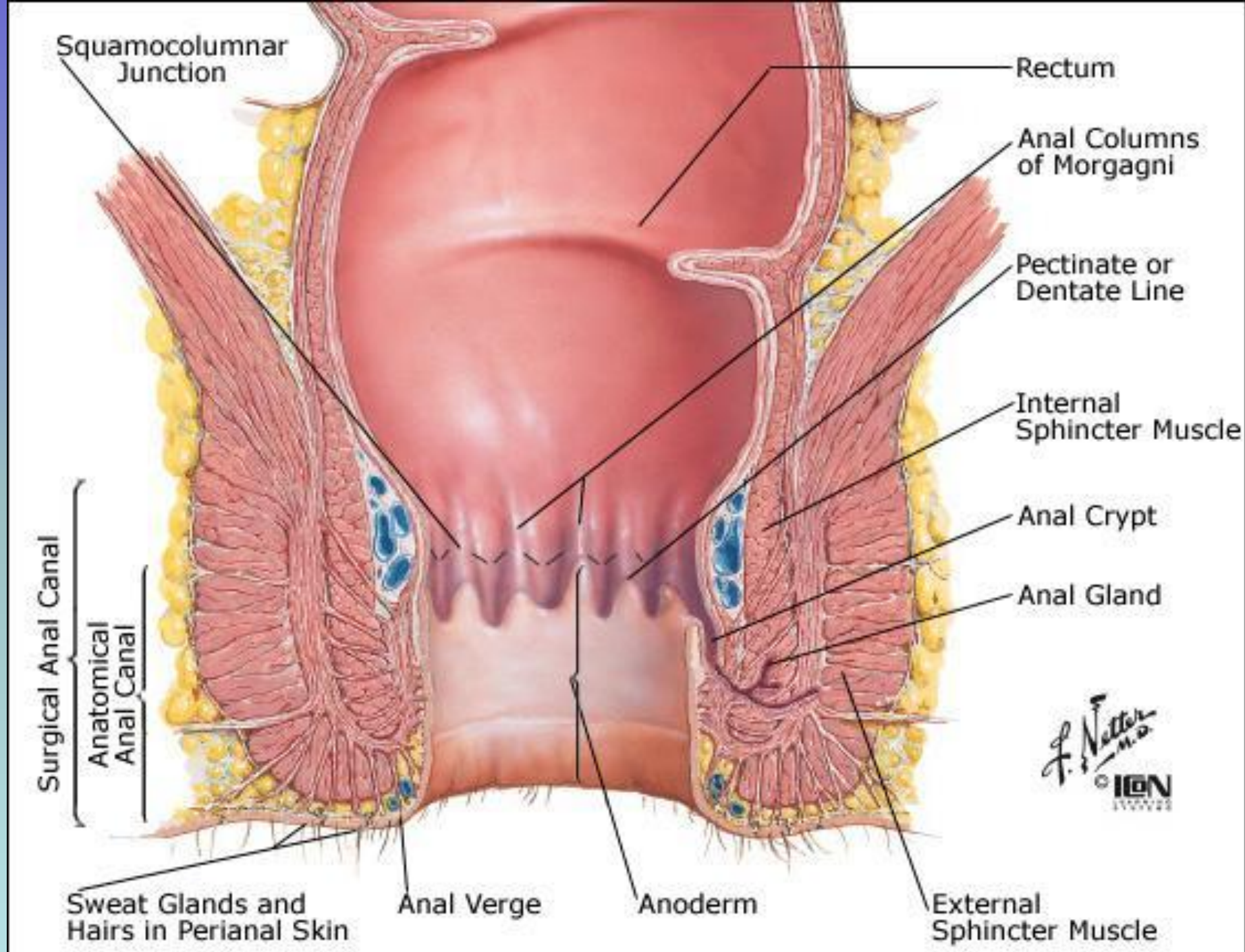


Rectum of Male in Situ



MALE UROGENITAL SYSTEM (MIDSAGITTAL VIEW)





Squamocolumnar Junction

Rectum

Anal Columns of Morgagni

Pectinate or Dentate Line

Internal Sphincter Muscle

Anal Crypt

Anal Gland

Surgical Anal Canal

Anatomical Anal Canal

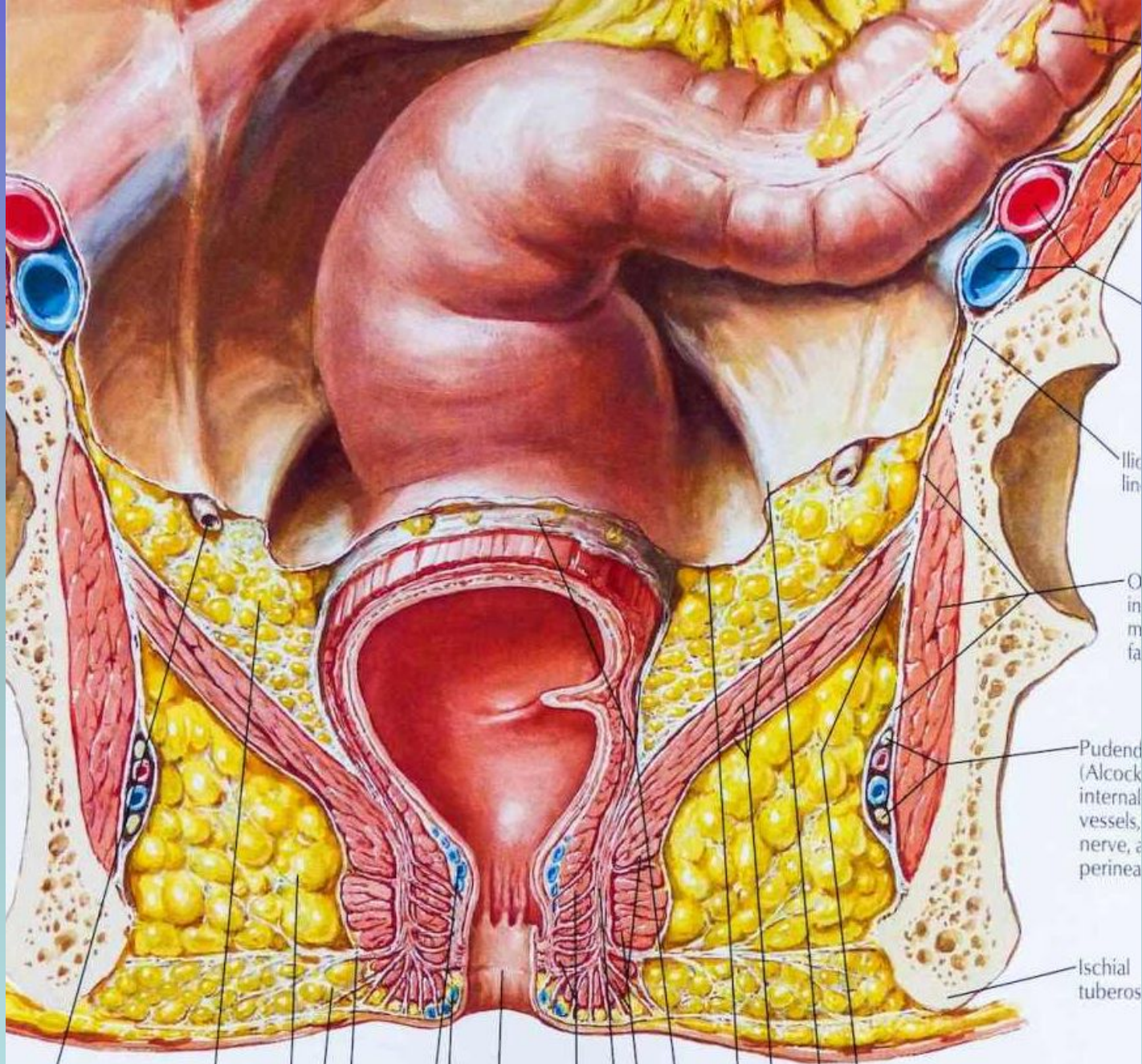
F. Netter M.D.
© ION
ILLUSTRATIONS

Sweat Glands and Hairs in Perianal Skin

Anal Verge

Anoderm

External Sphincter Muscle



reter

Extraperitoneal

Tendinous arch of levator ani

Ilio
lin

O
in
m
fa

Pudend
(Alcock
internal
vessels,
nerve, a
perinea

Ischial
tuberos