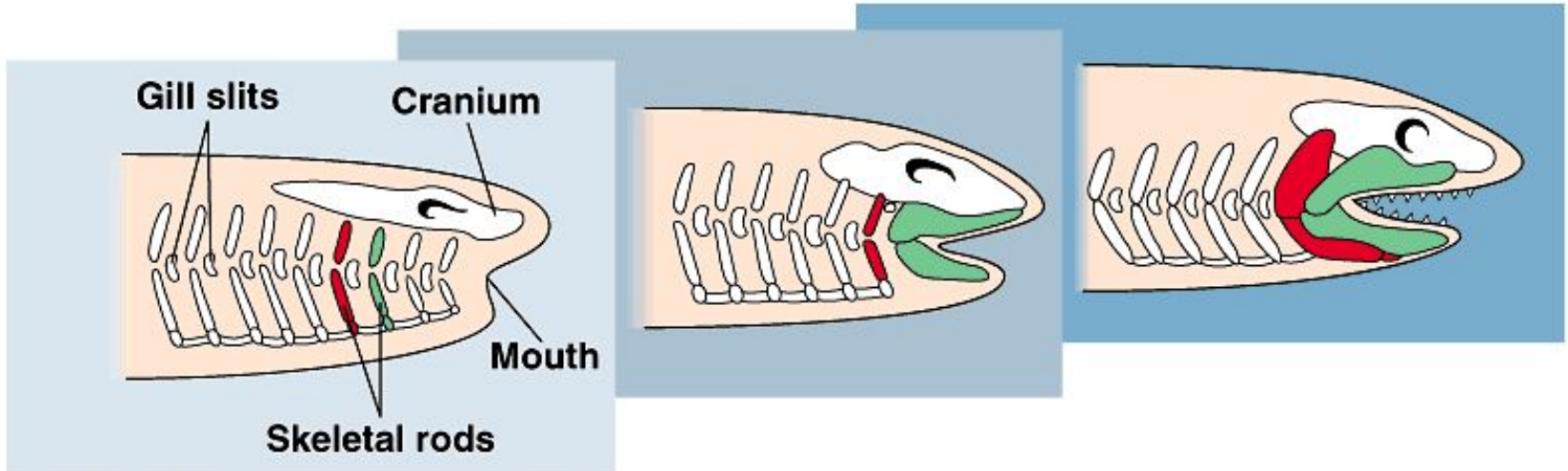


# Челюстноротые

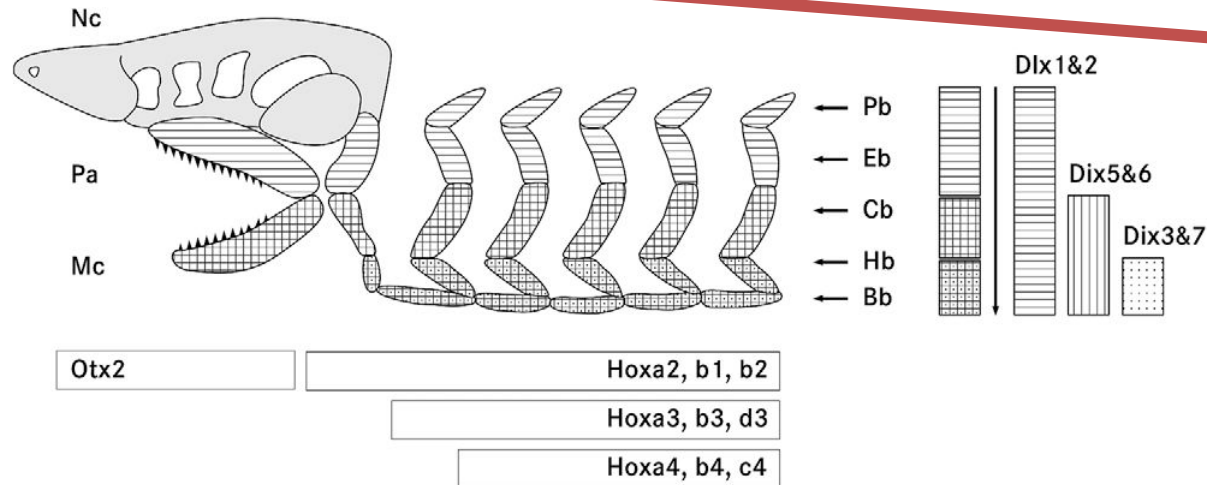
Характеристика.

Панцирные рыбы.

# Gnathostomata

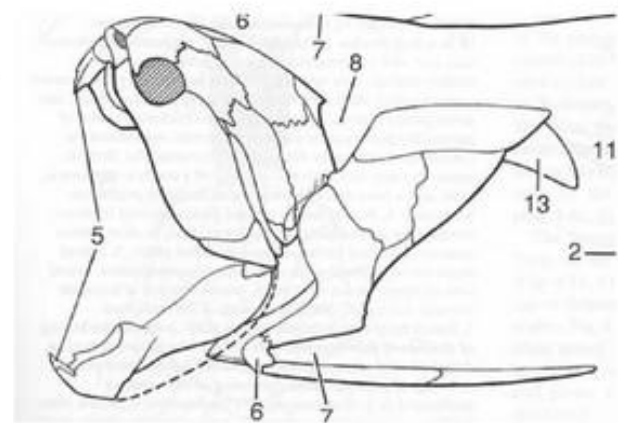
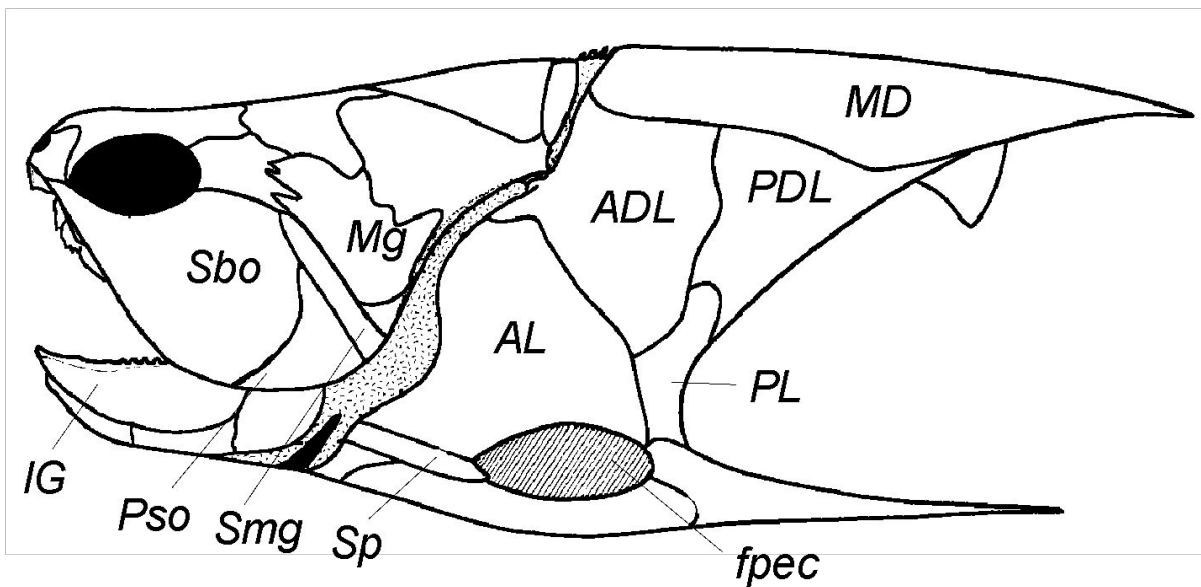
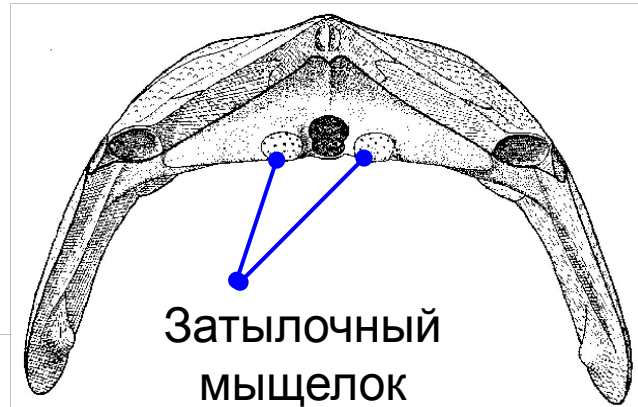
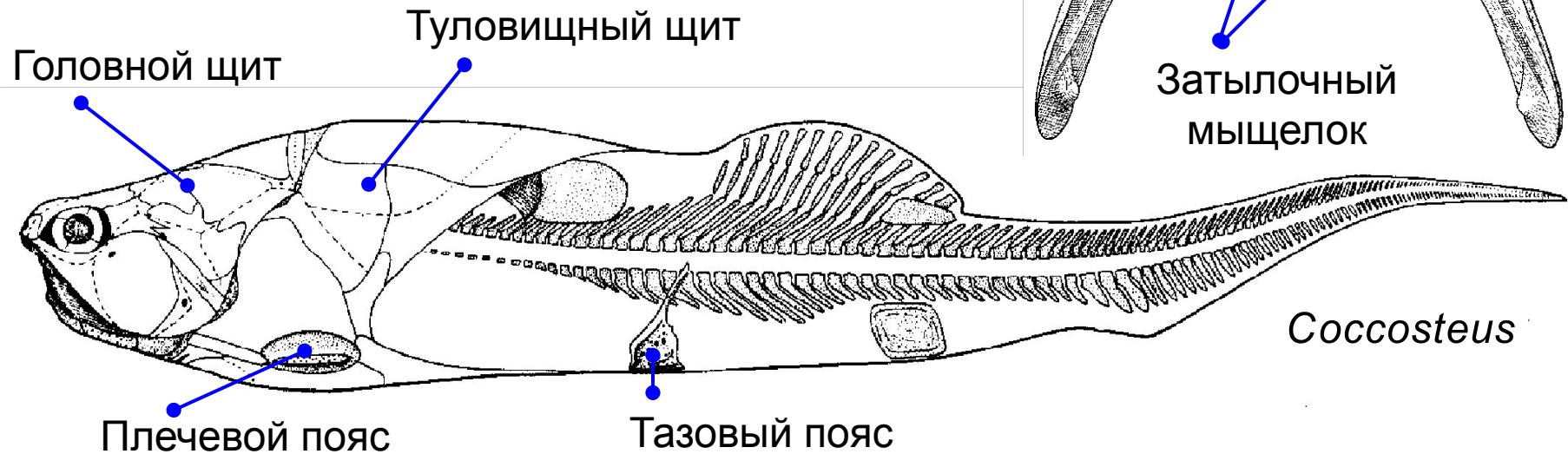


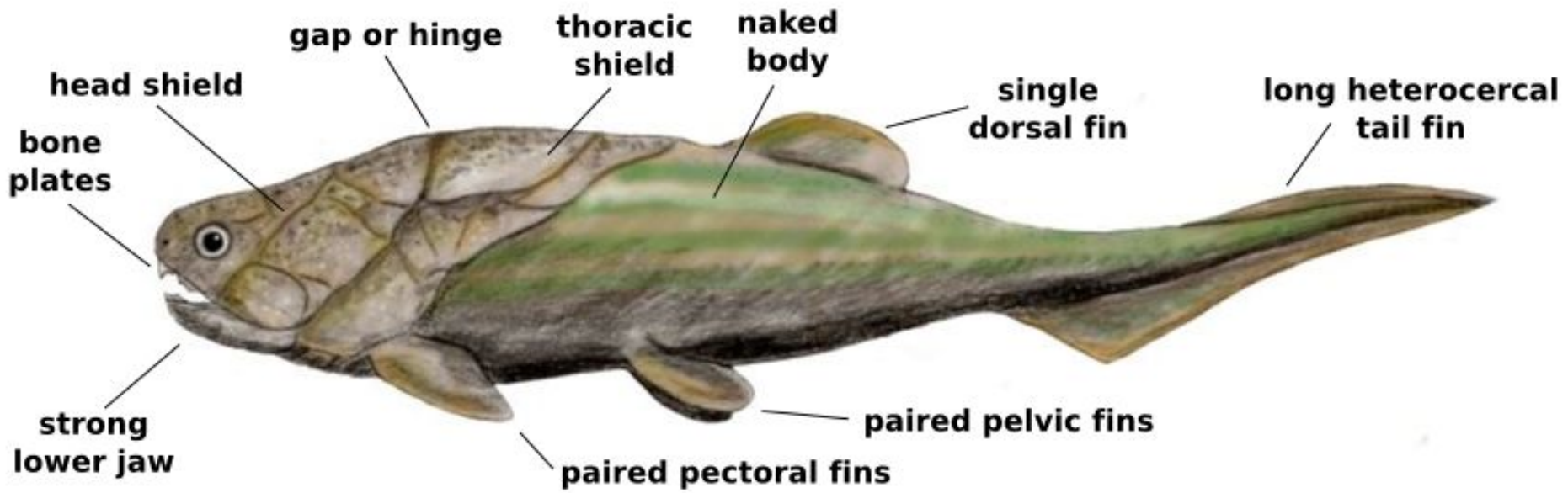
Copyright © Pearson Education, Inc., publishing as Benjamin Cummings.

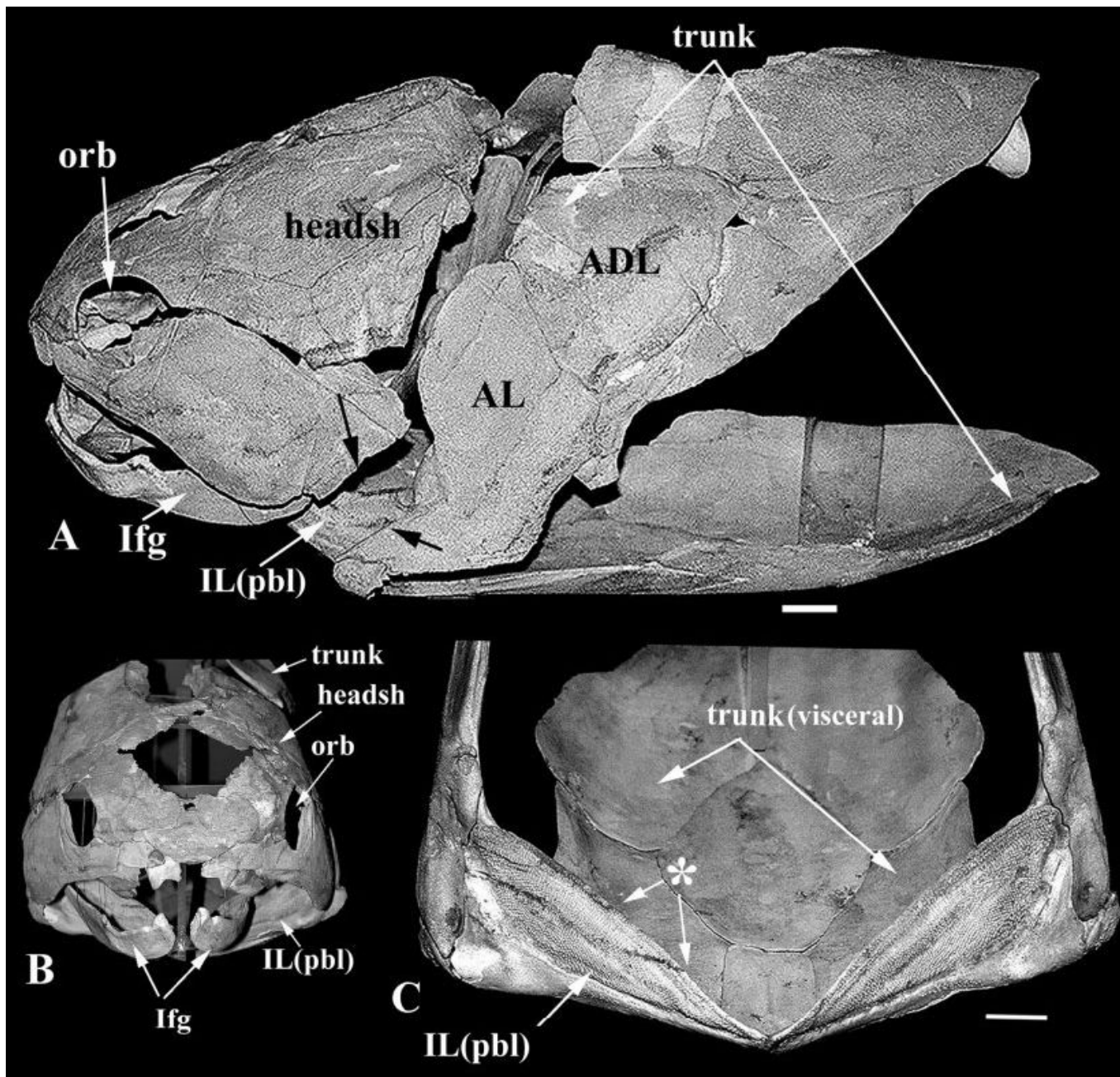


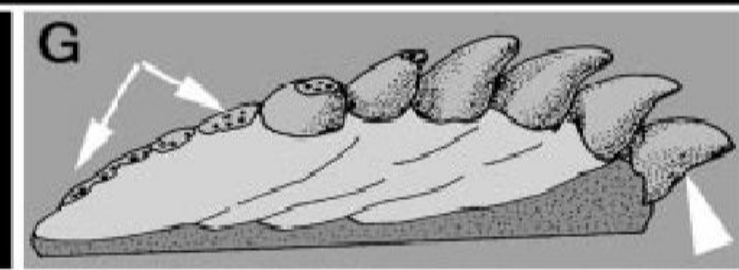
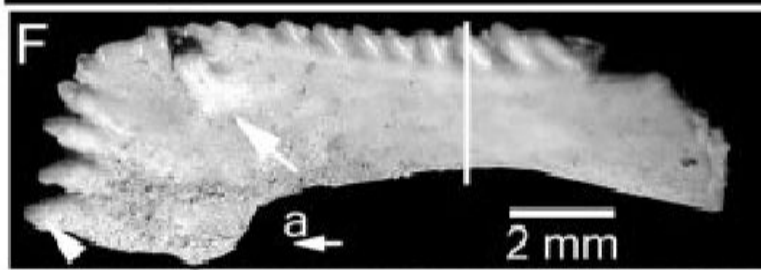
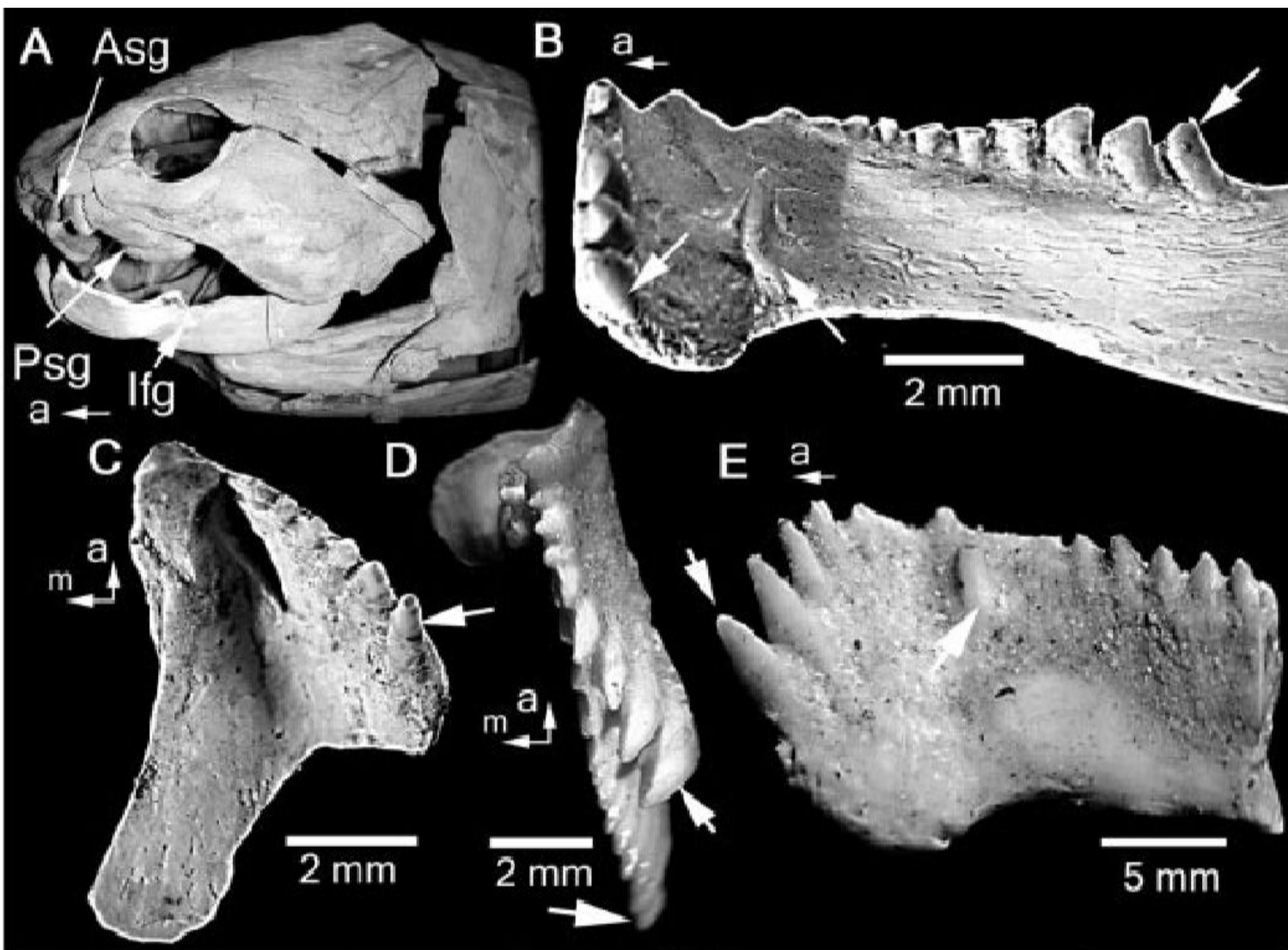


# План строения



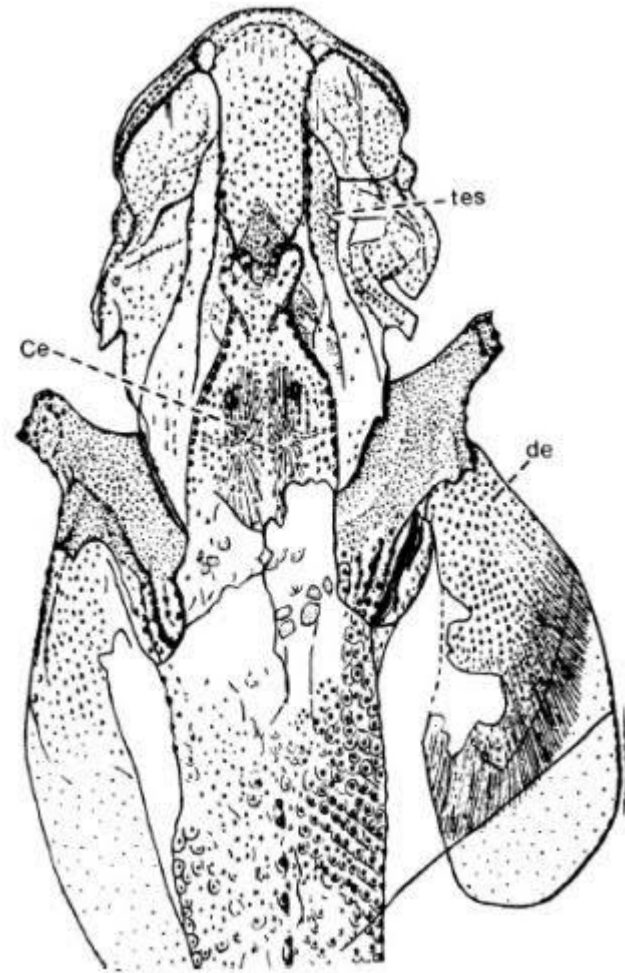
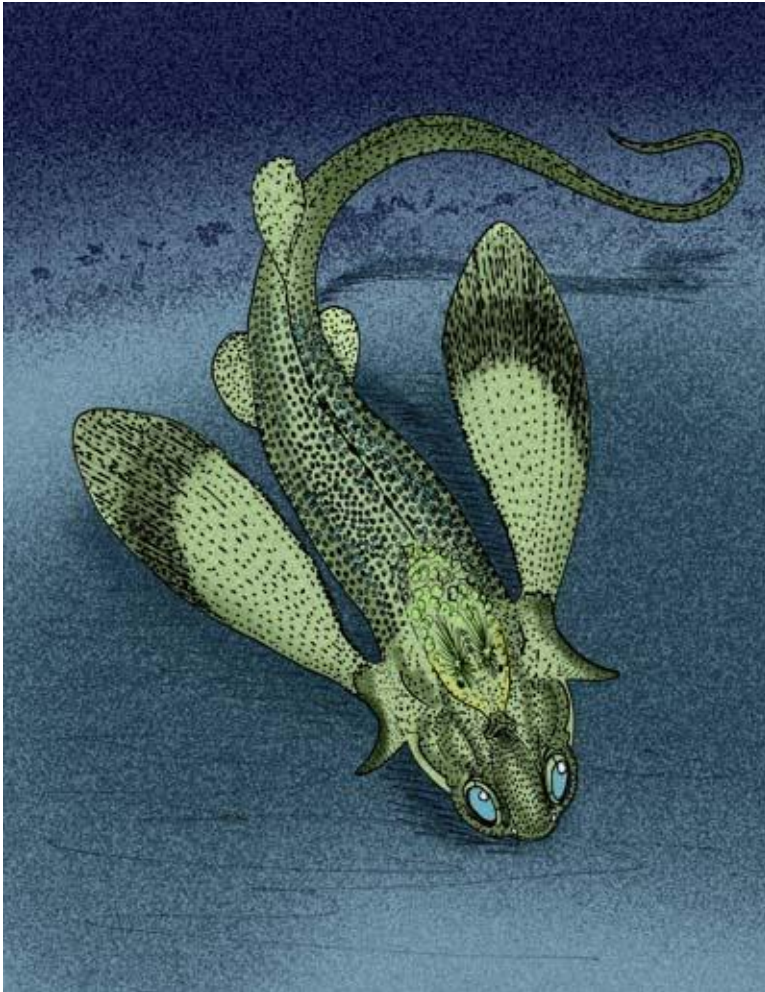






# *Stensioella*

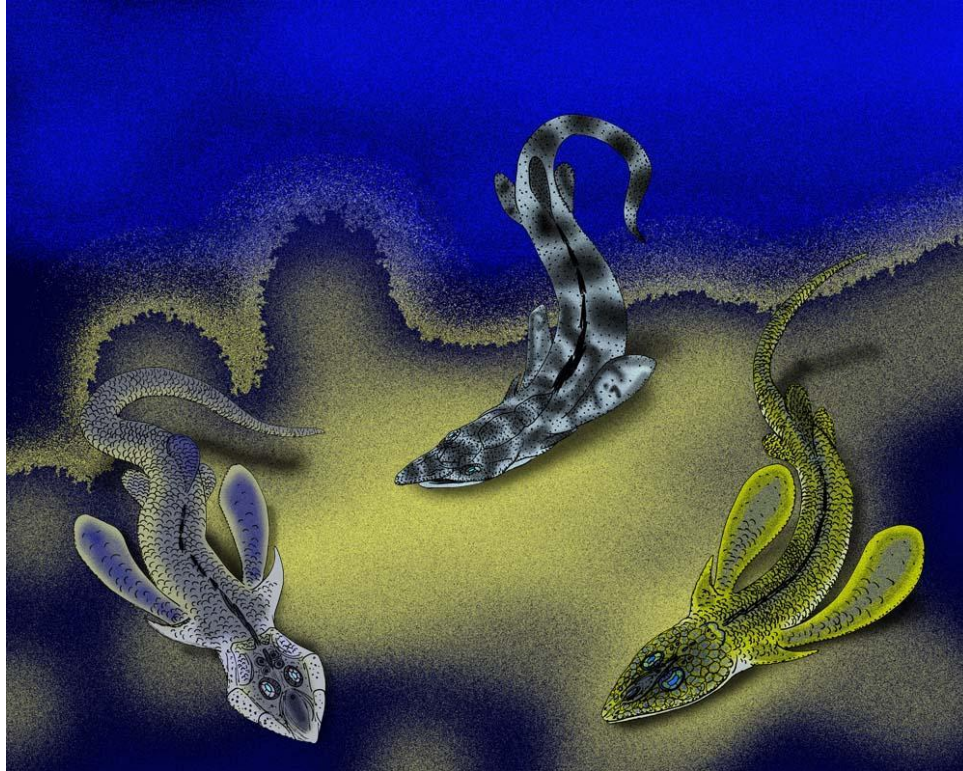
Нижний девон, Германия



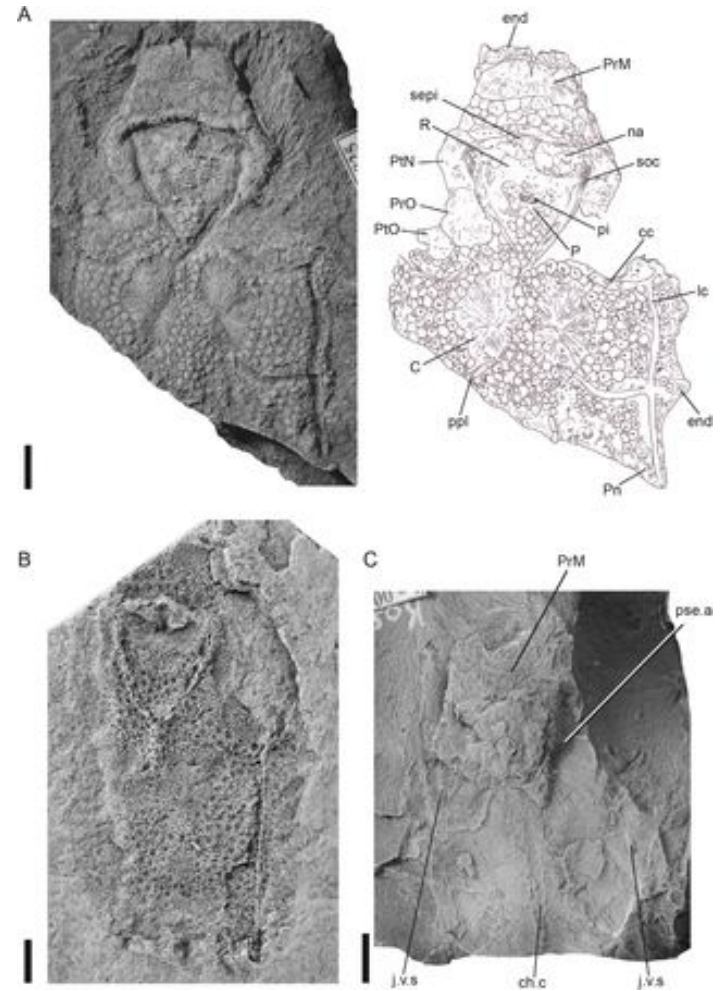
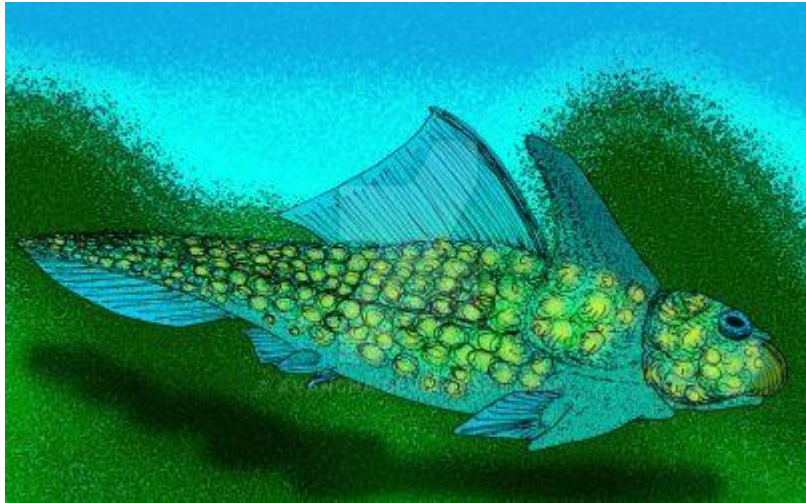


# Pseudopetalichthyida

Нижний девон, Германия

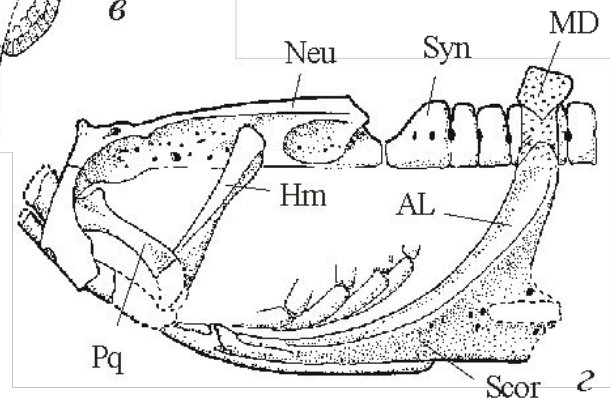
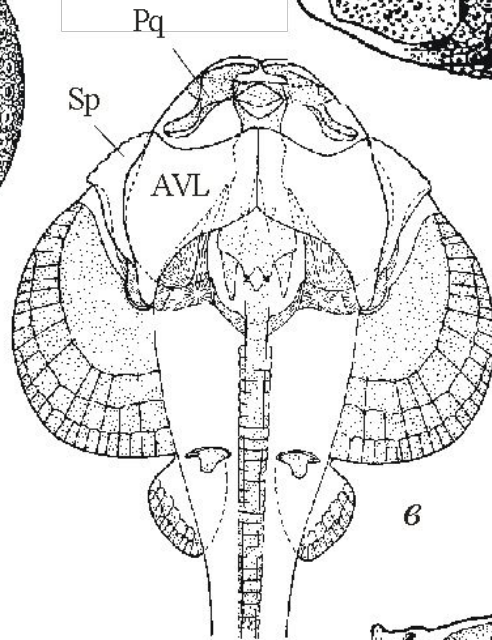
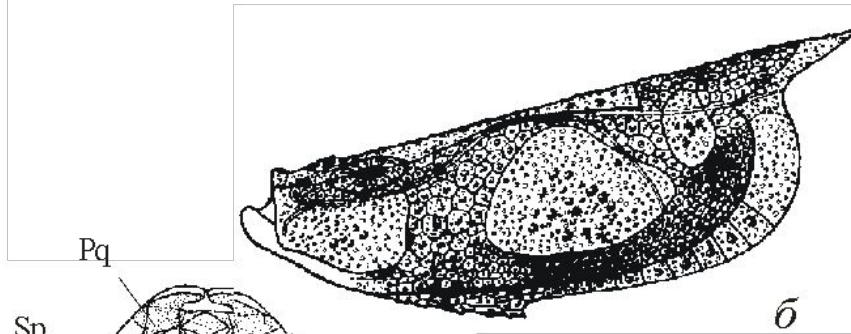
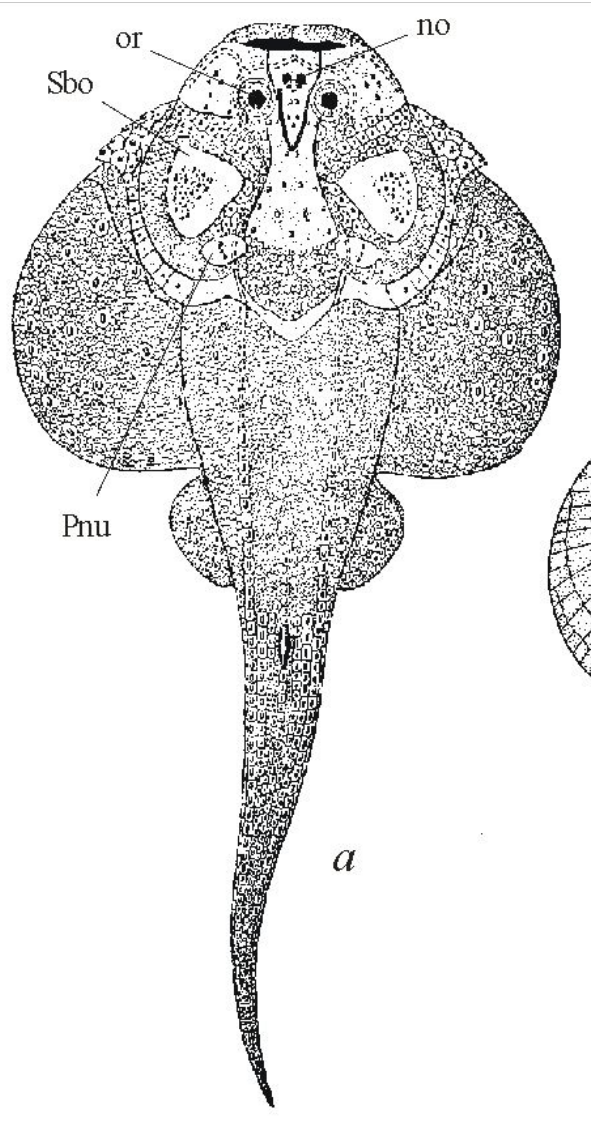


# Acanthothoraci Ранний-средний девон



# Rhenanida

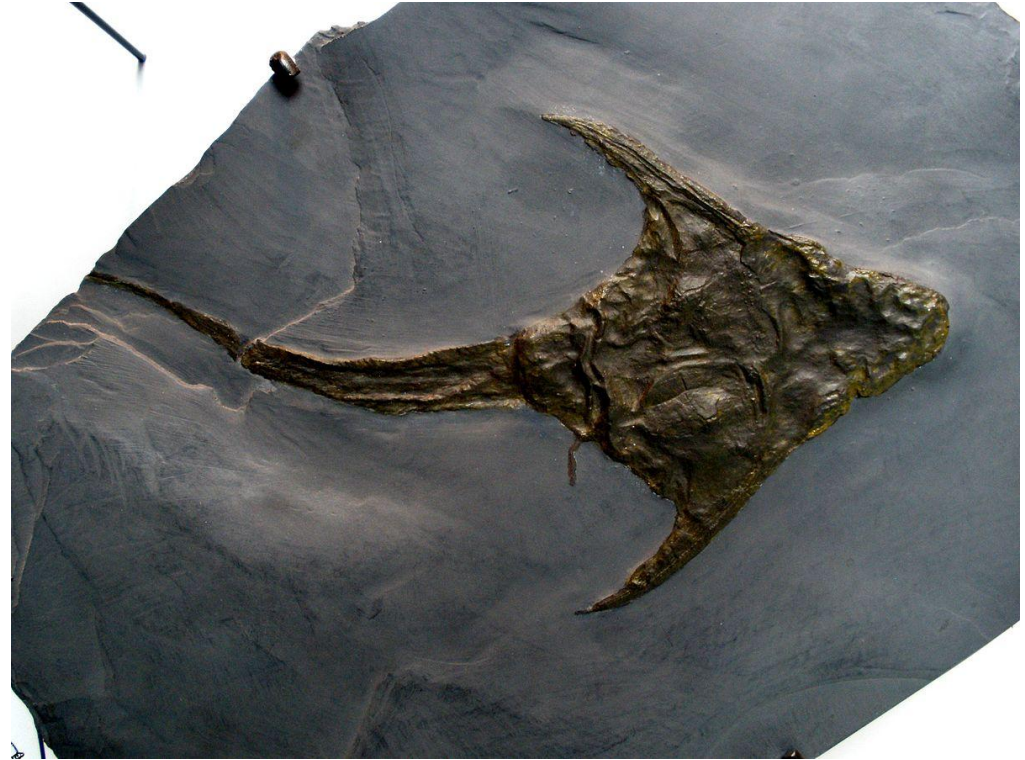
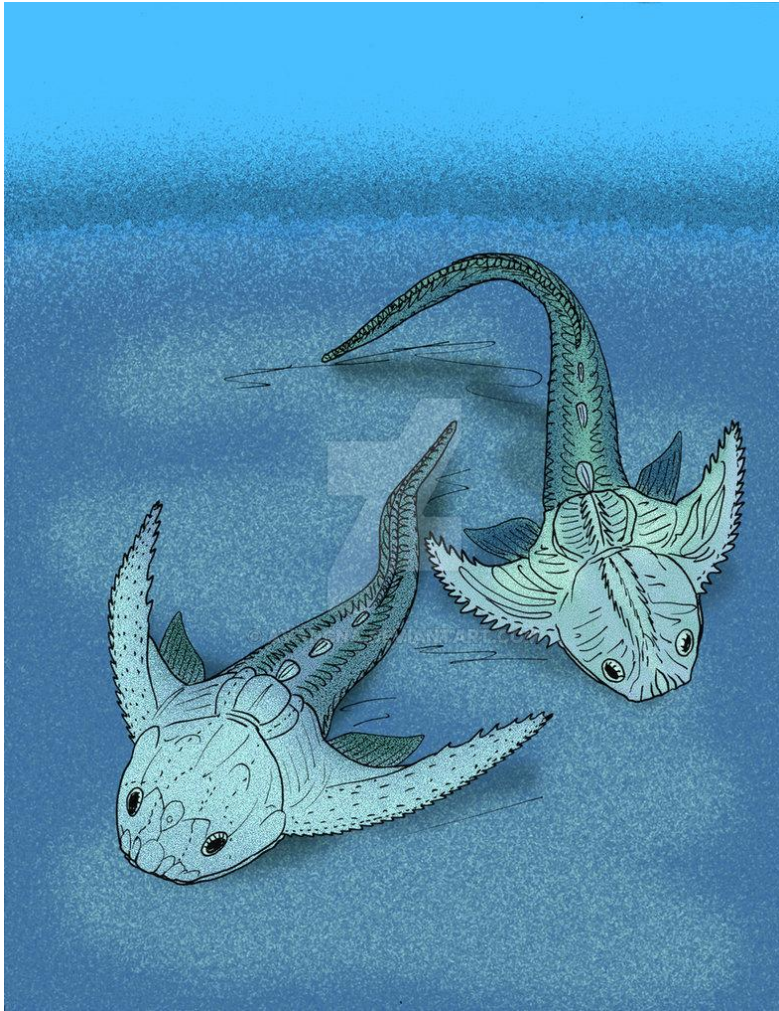
Ранний – поздний девон





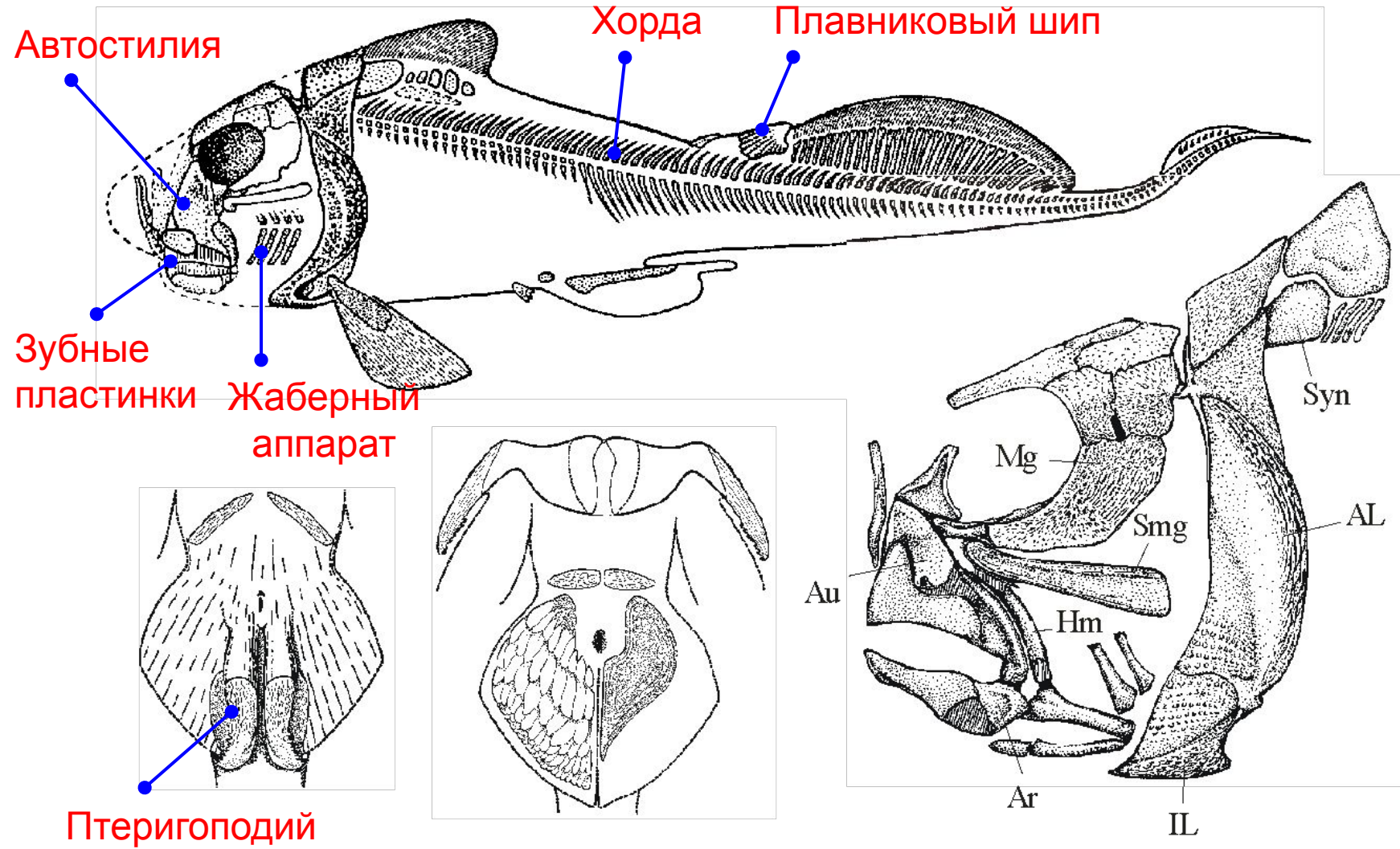
# Petalichthyida

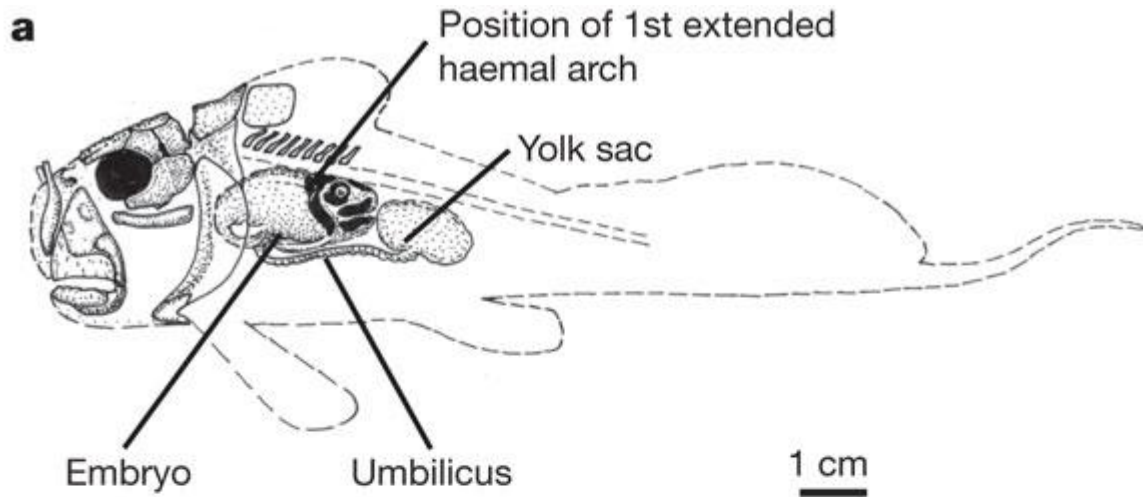
Ранний – поздний девон



# Отряд Ptystodontida

Ранний девон – ранний карбон





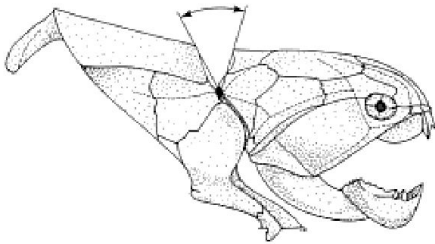
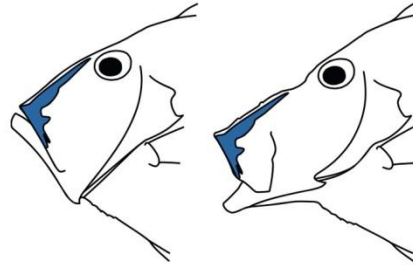
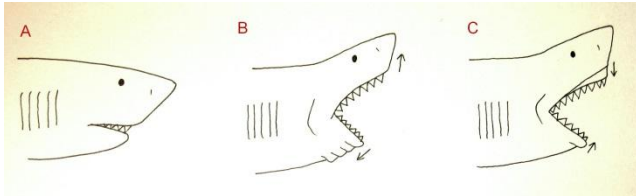
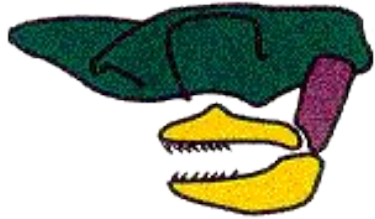
[Live birth in the Devonian period](#)

John A. Long, Kate Trinajstic, Gavin C. Young & Tim Senden  
***Nature* 453**, 650-652(29 May 2008)



Upper Devonian Gogo Formation of Western Australia (approximately 380 million years ago).

*Materpiscis*

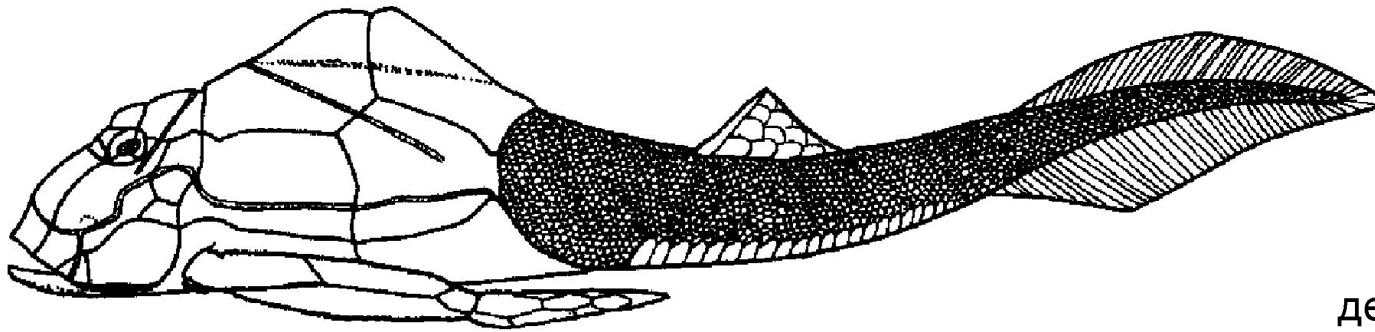




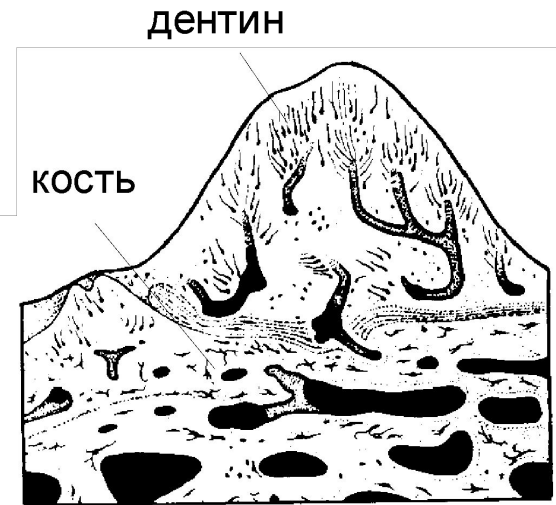
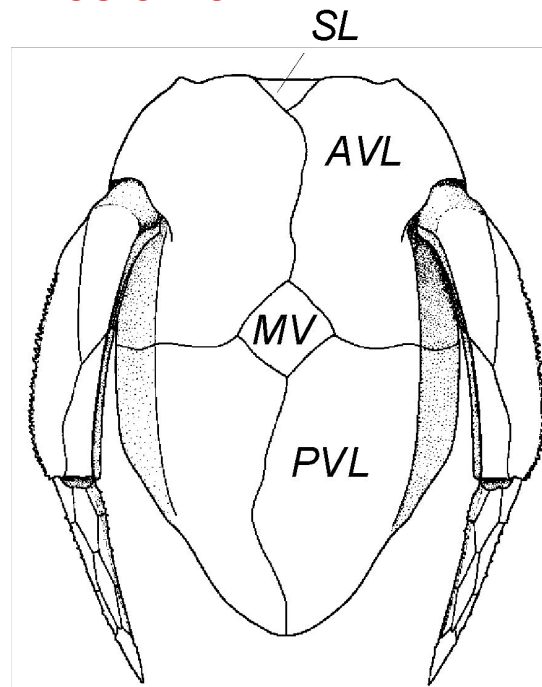
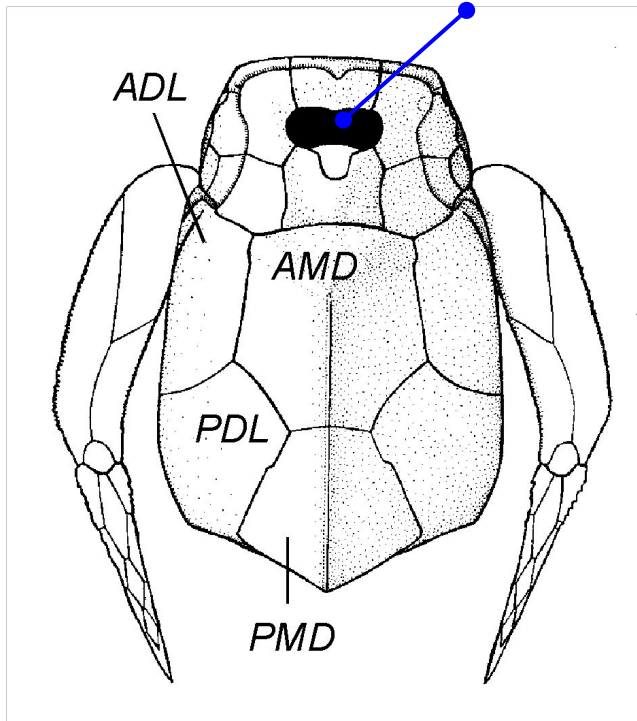
# Antiarchi

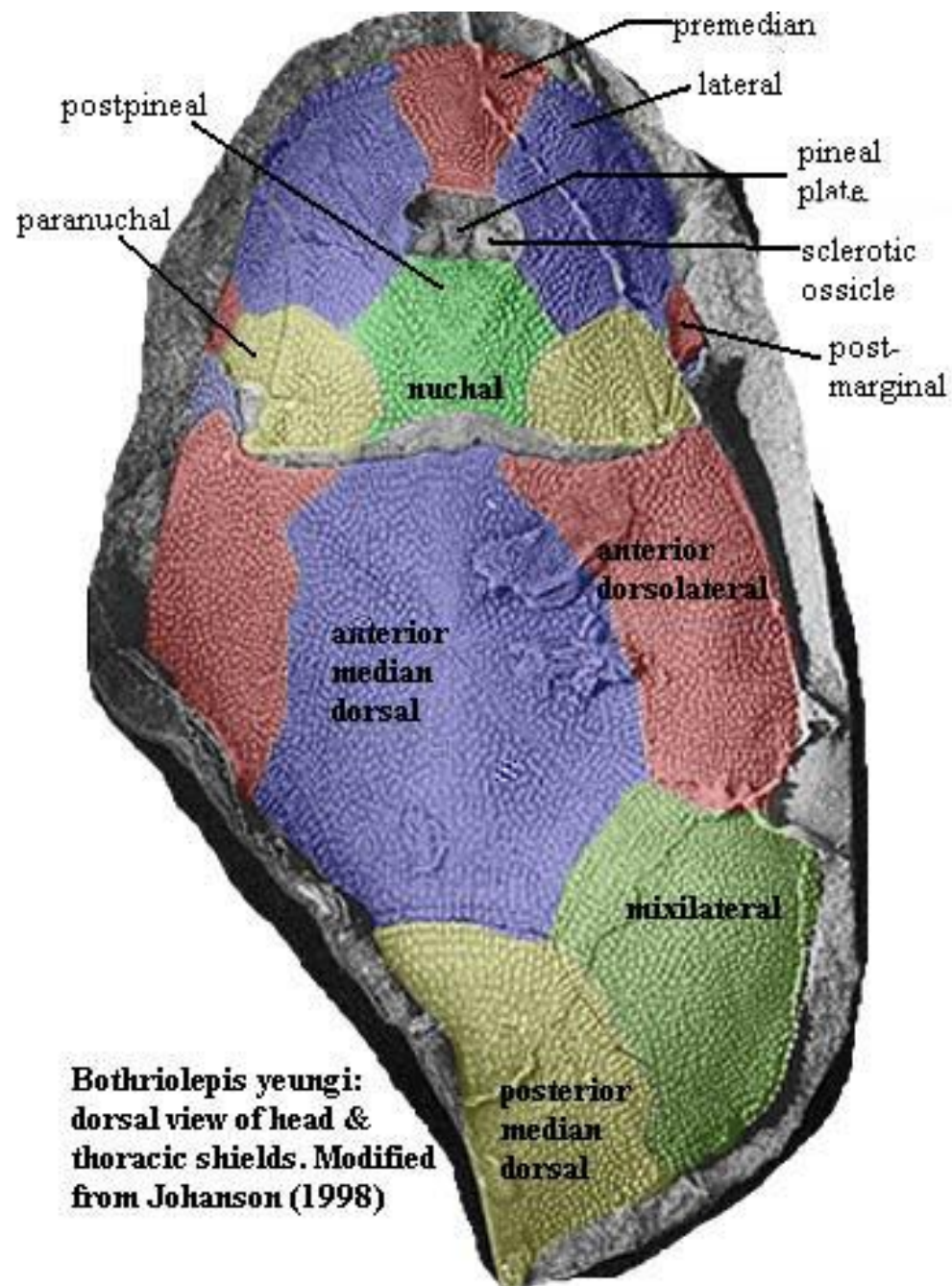
Ранний – поздний девон





Орбито-назальное окно

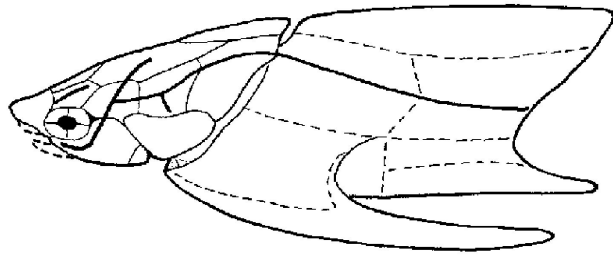




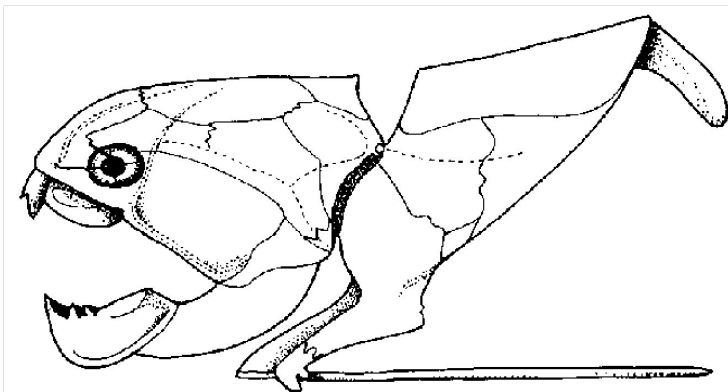


# Arthrodira

Около 30 семейств, 170 родов  
Ранний – поздний девон



*Arctolepis*



*Dinichthys*



