



# The Treasure Island



*by Herber*



# Where is the treasure?

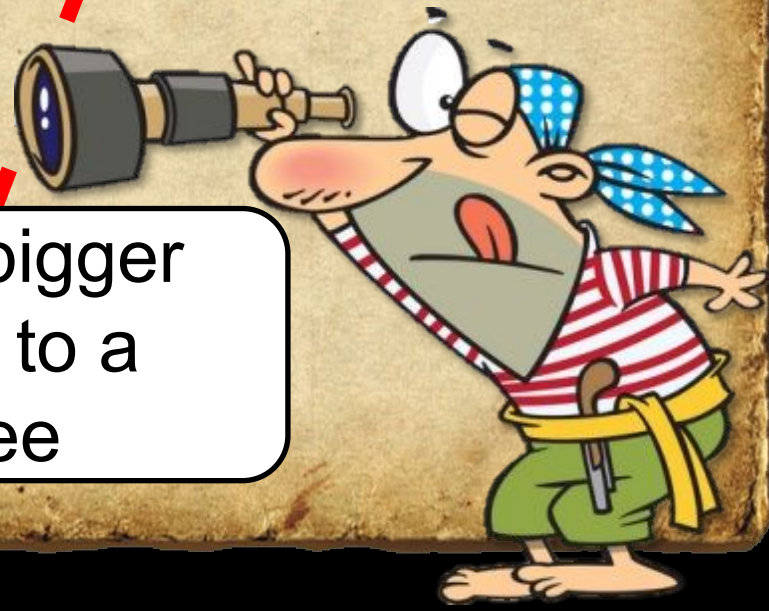
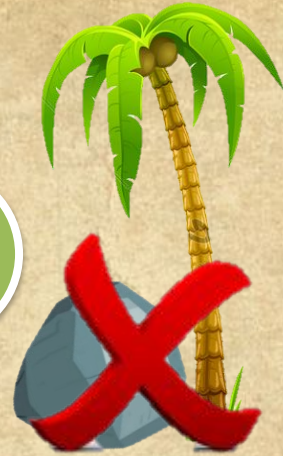
Find the path to the treasure  
by clicking on the correct option



A



B



Go to the bigger rock next to a palmtree

A



B

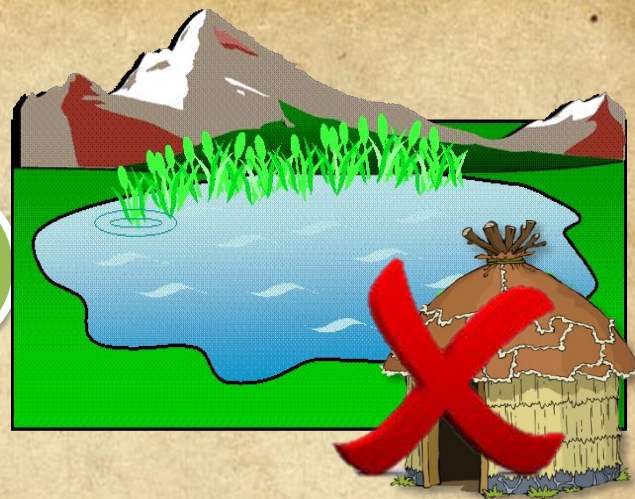


Go to the lower  
palmtree between  
the rocks

A



B

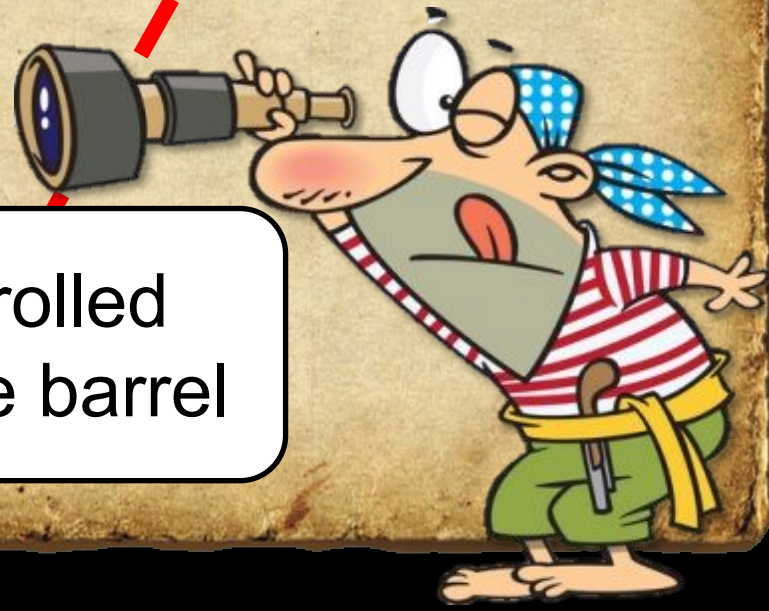


Go to the hut next to the waterfall

A



B

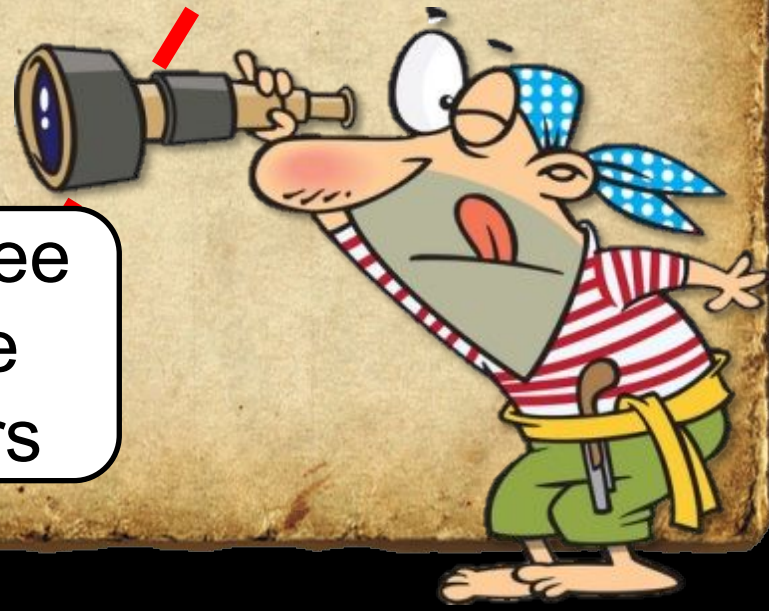


Take the rolled paper in the barrel

A



B

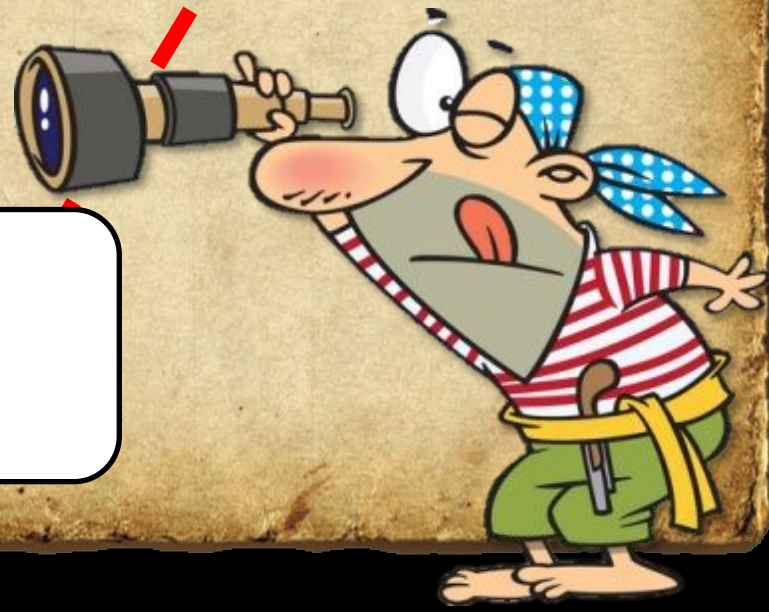


Go to the tree  
among the  
blue flowers

A



B



Go to the  
extinct  
volcano

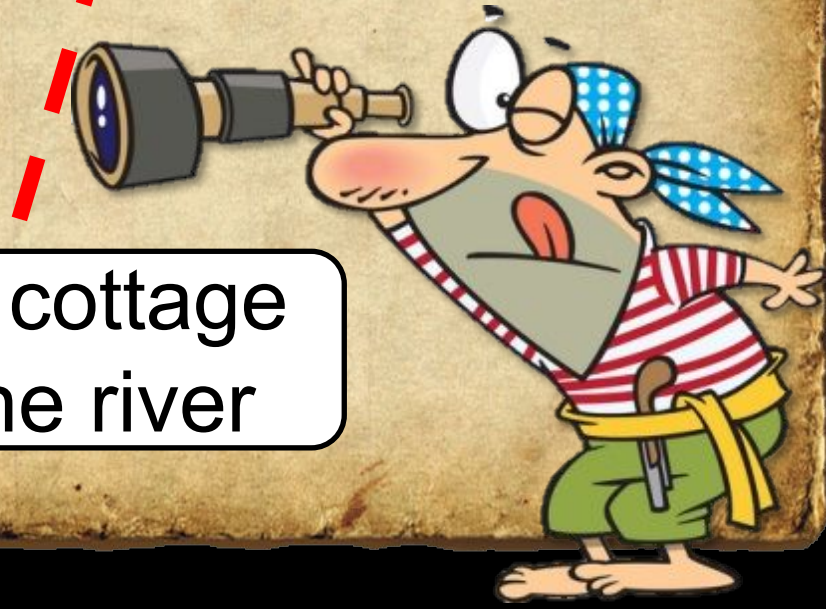




A



B

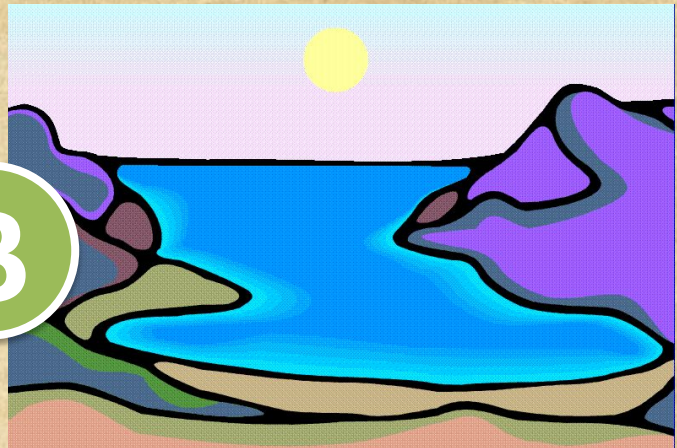


Go to the cottage next to the river

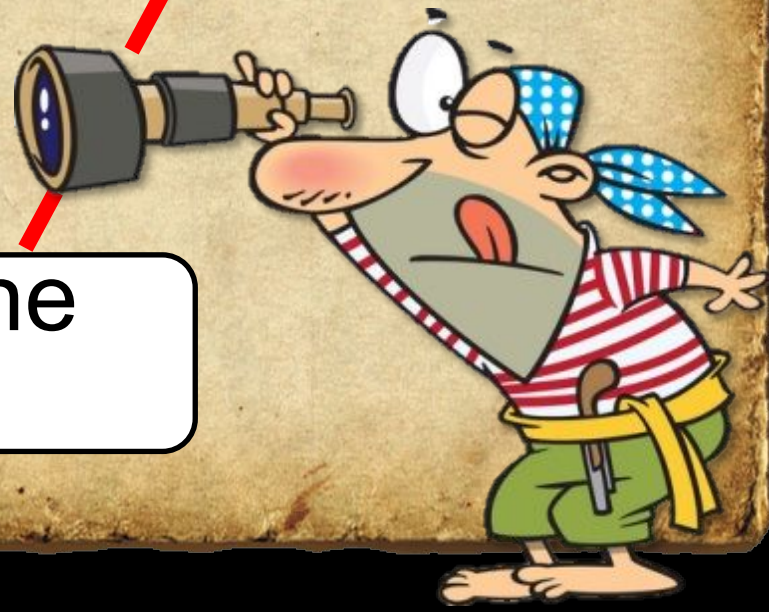
A



B



Go to the bay



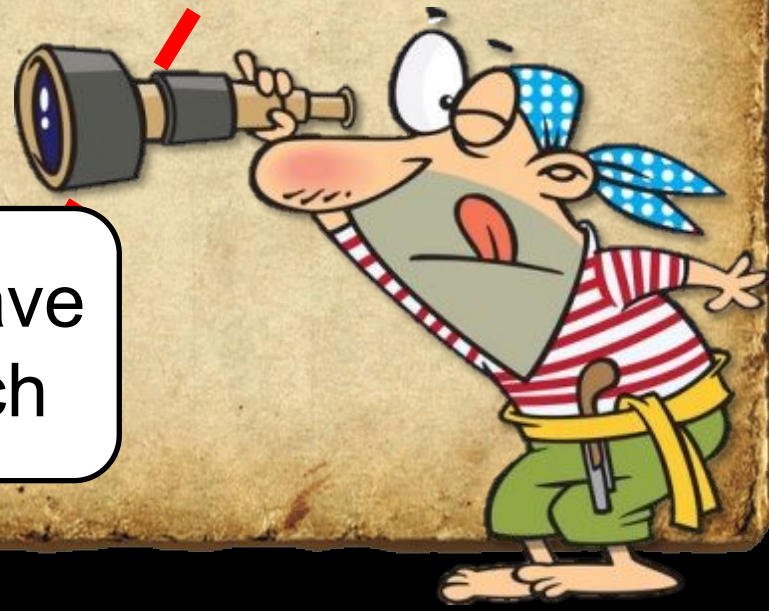
A



B



Go to the cave  
at the beach



Too late!  
It's mine!



EXIT

