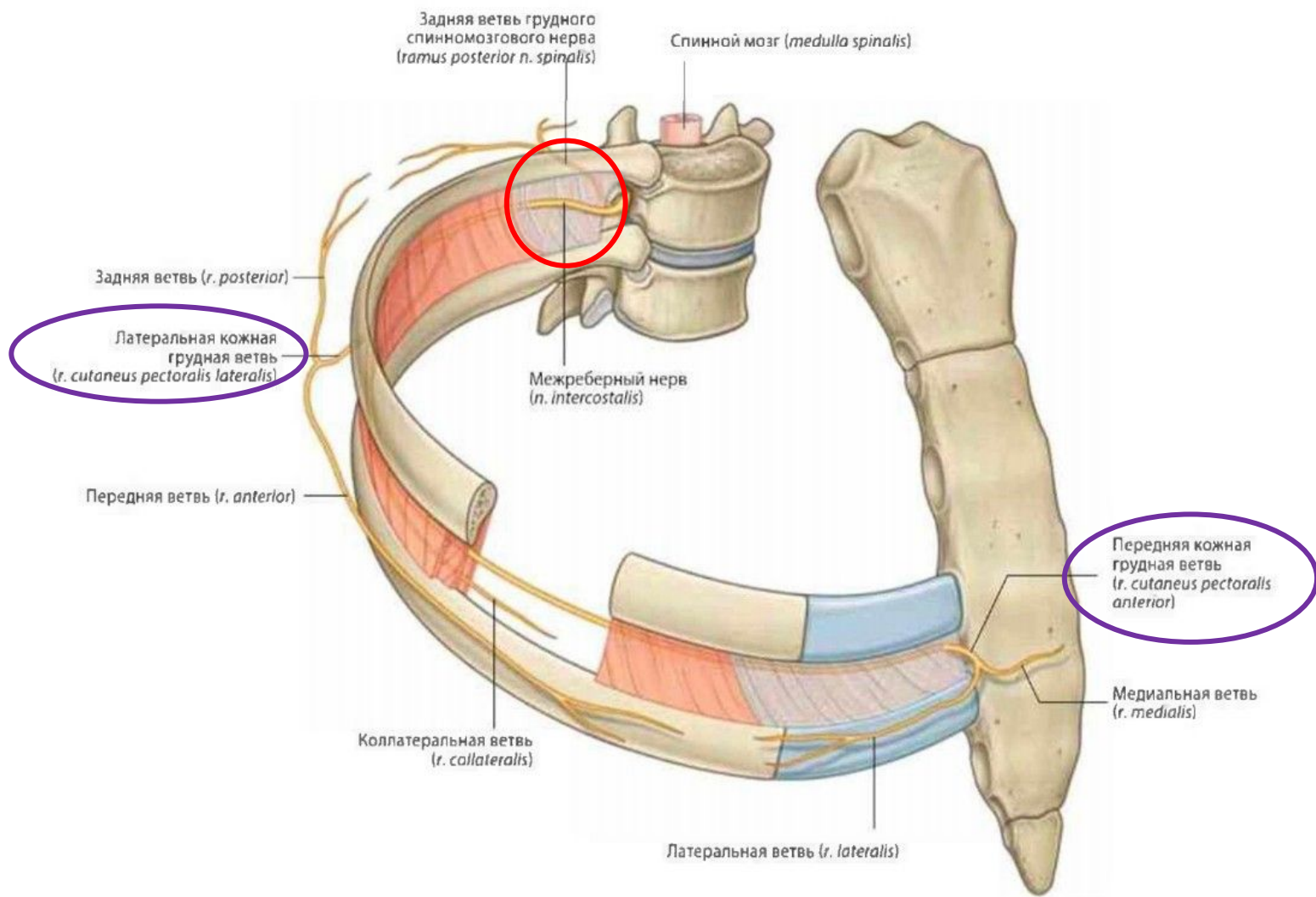


# Грудные нервы

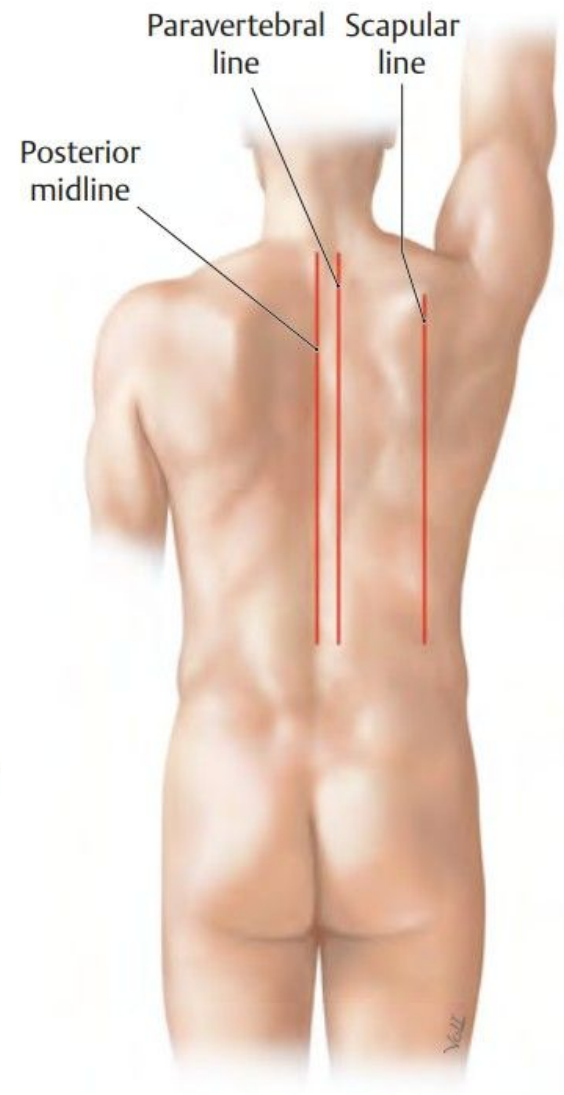
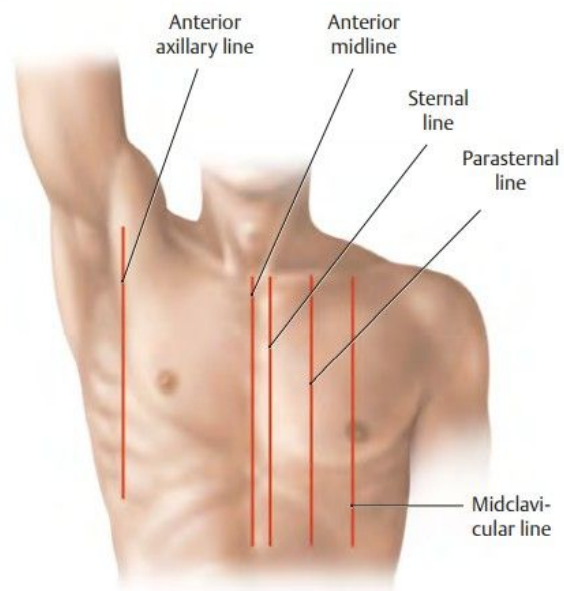
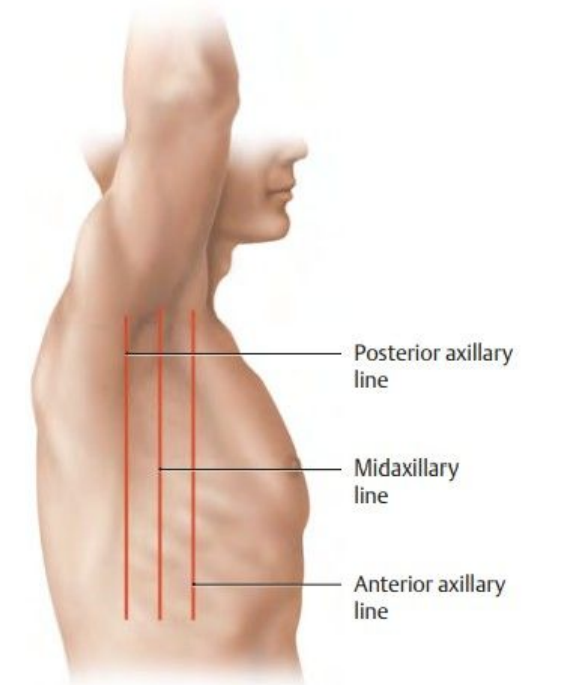
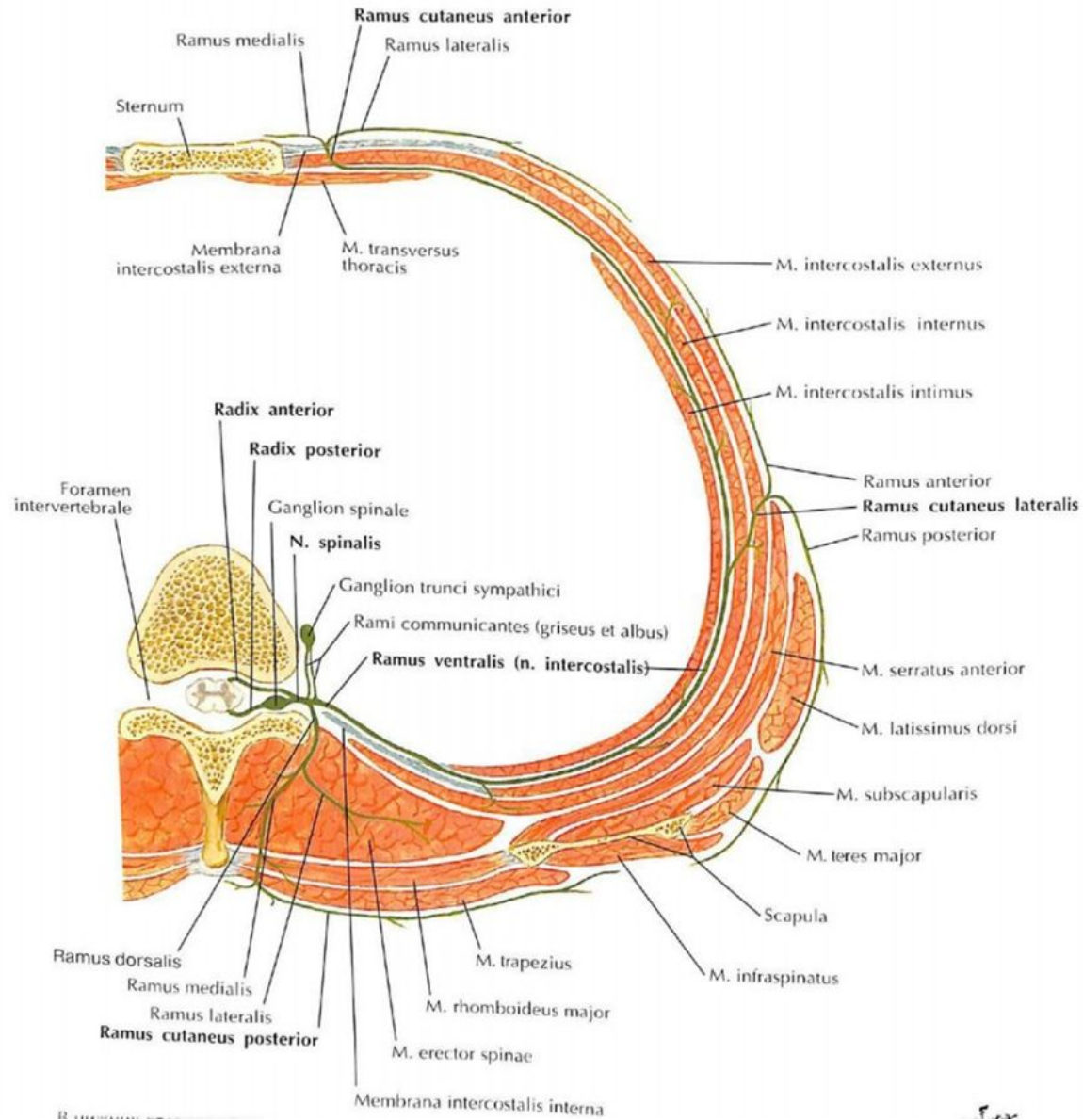
Пугачев Роман



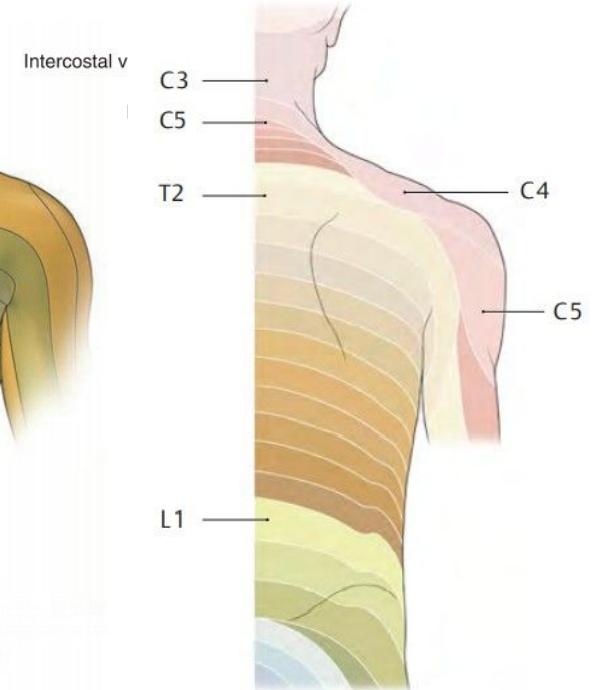
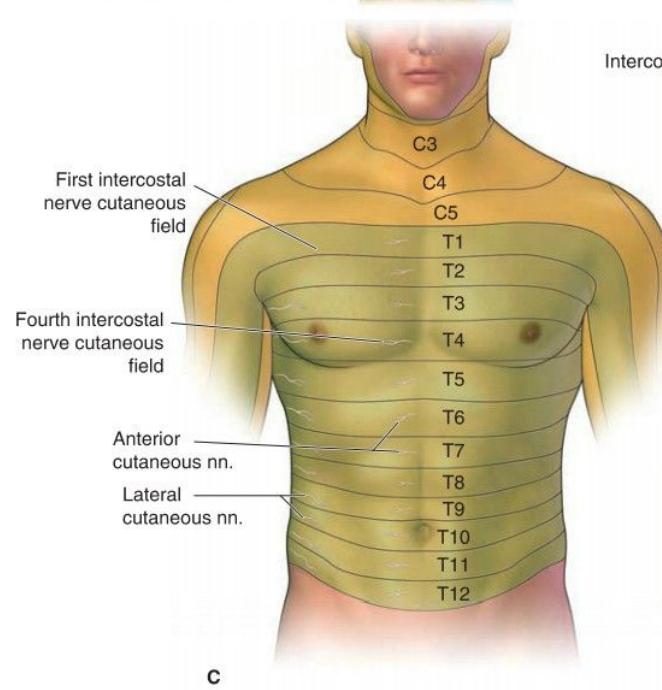
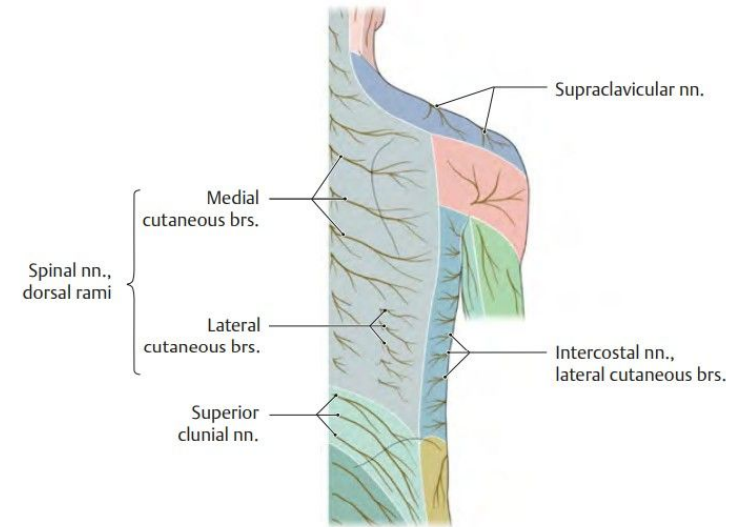
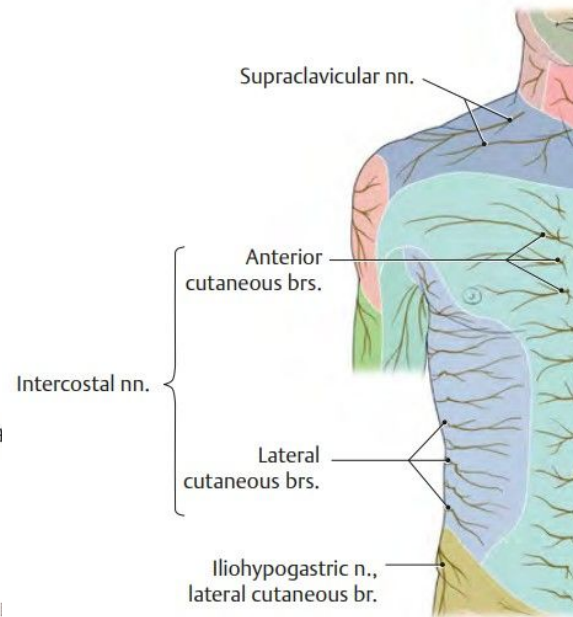
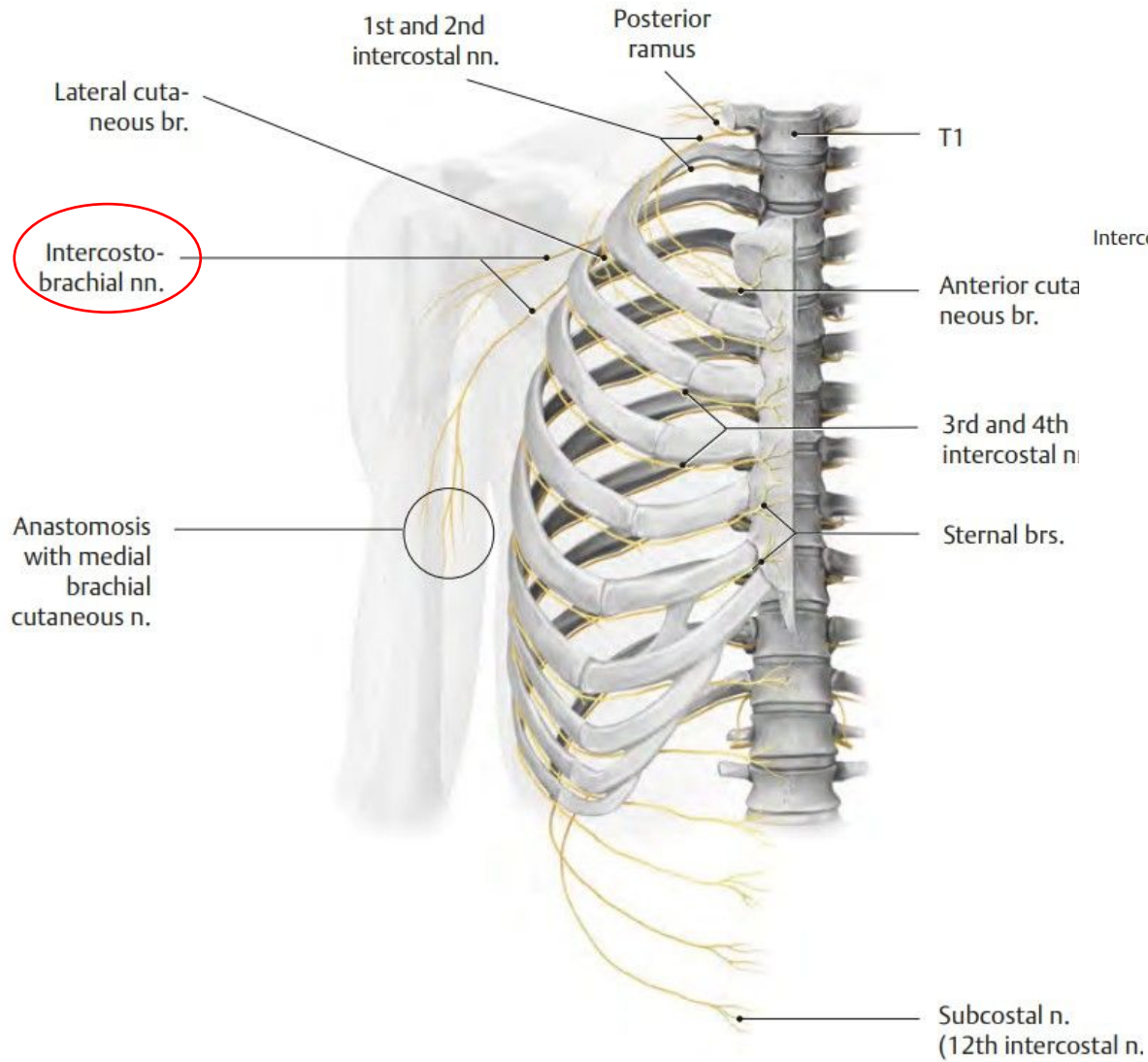
nn. intercostales  
 (ветви T2-T11)  
 n. subcostalis

ОСНОВНЫЕ ВЕТВИ:  
 r. dorsalis – r. medialis et  
 lateralis, r. cutaneus posterior  
 r. anterior = n. intercostalis

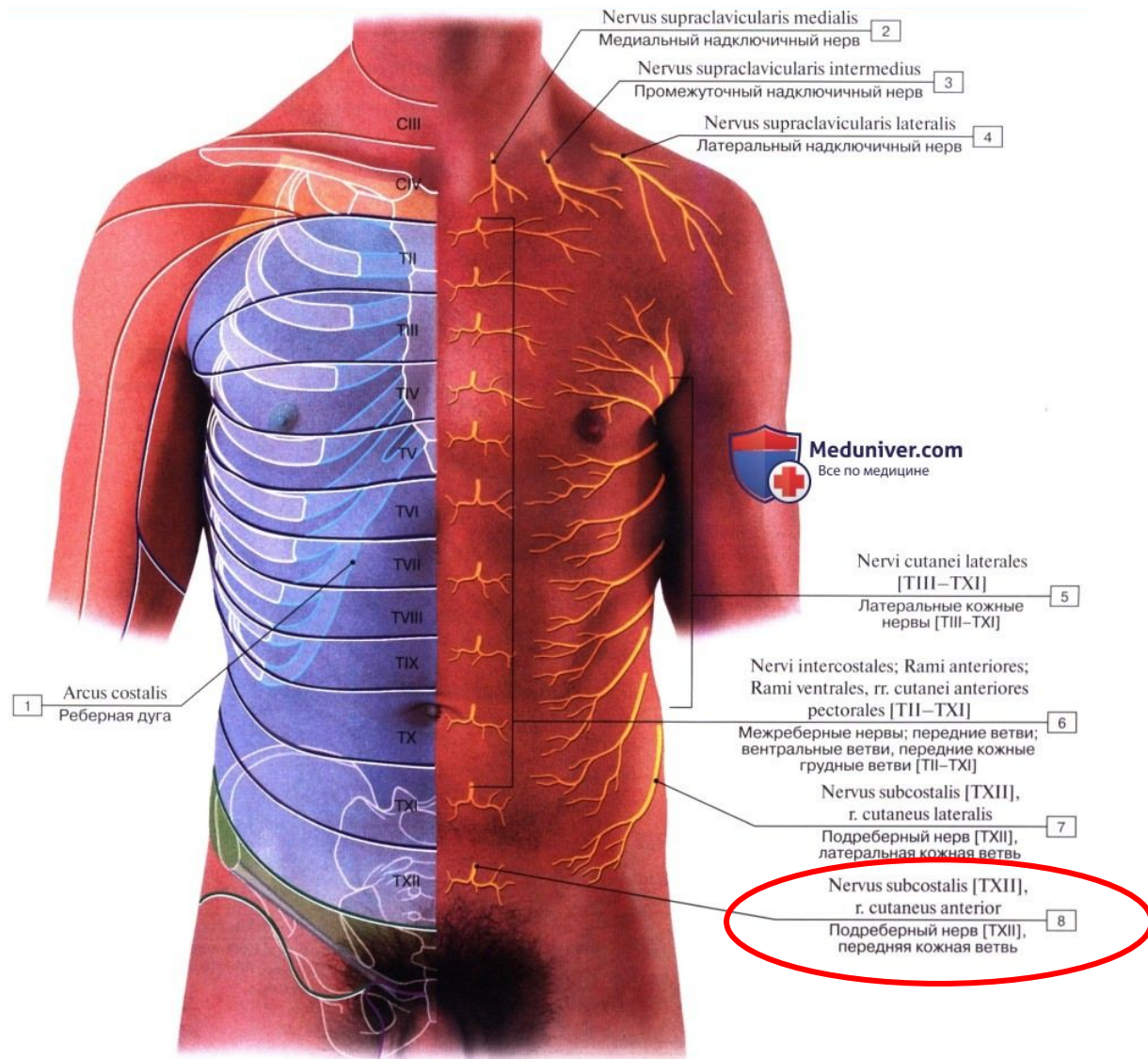
КОЖНЫЕ ВЕТВИ МРН:  
 r. cutaneus lateralis  
 r. cutaneus anterior



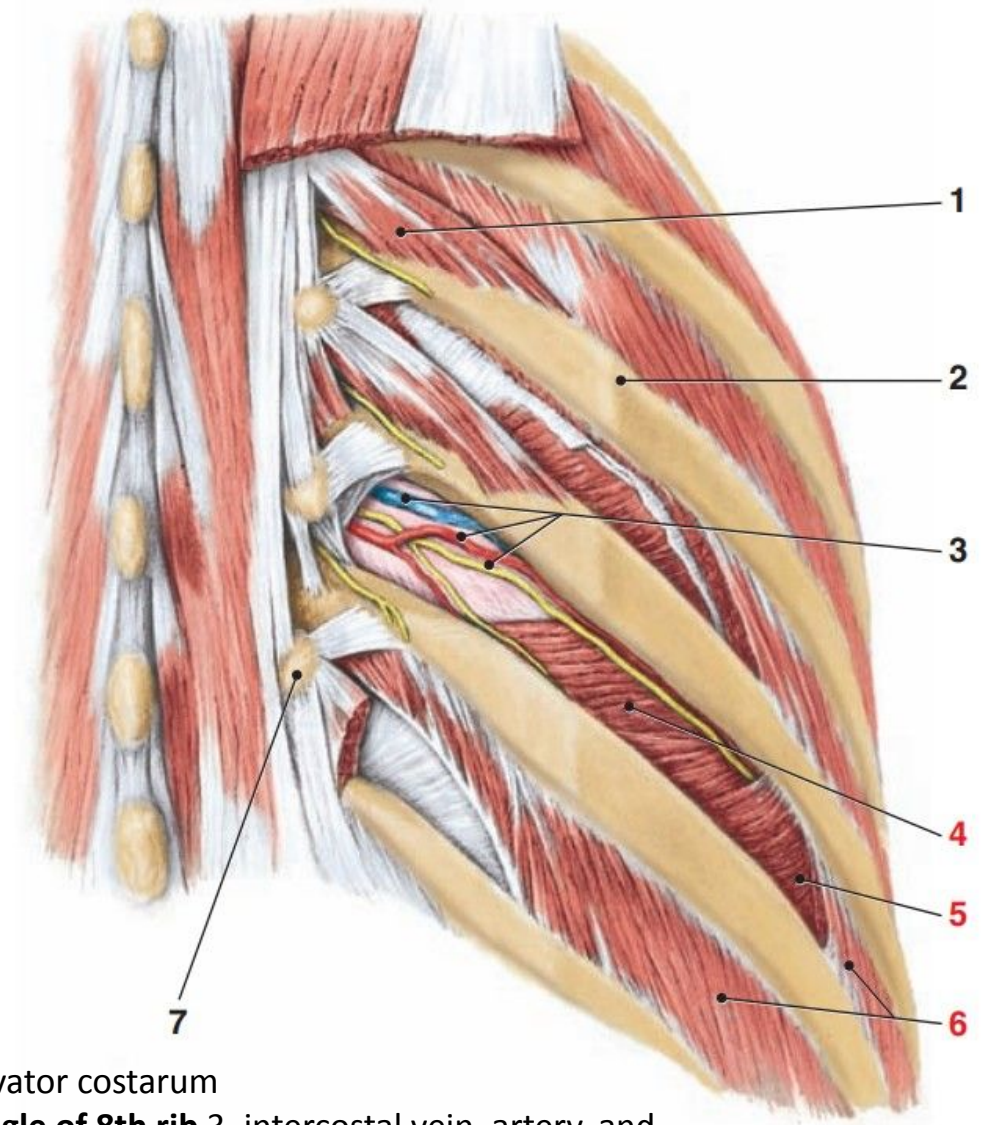






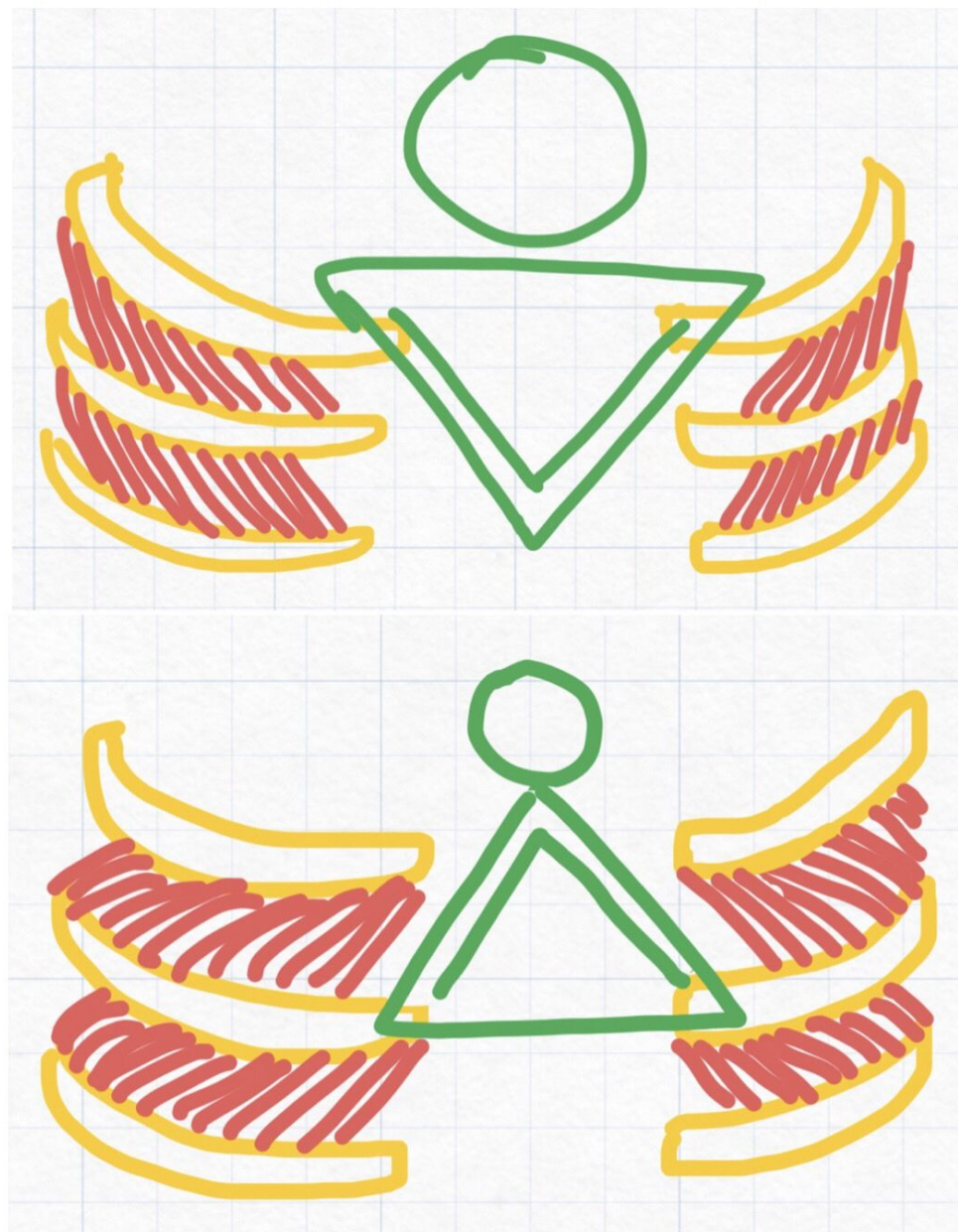
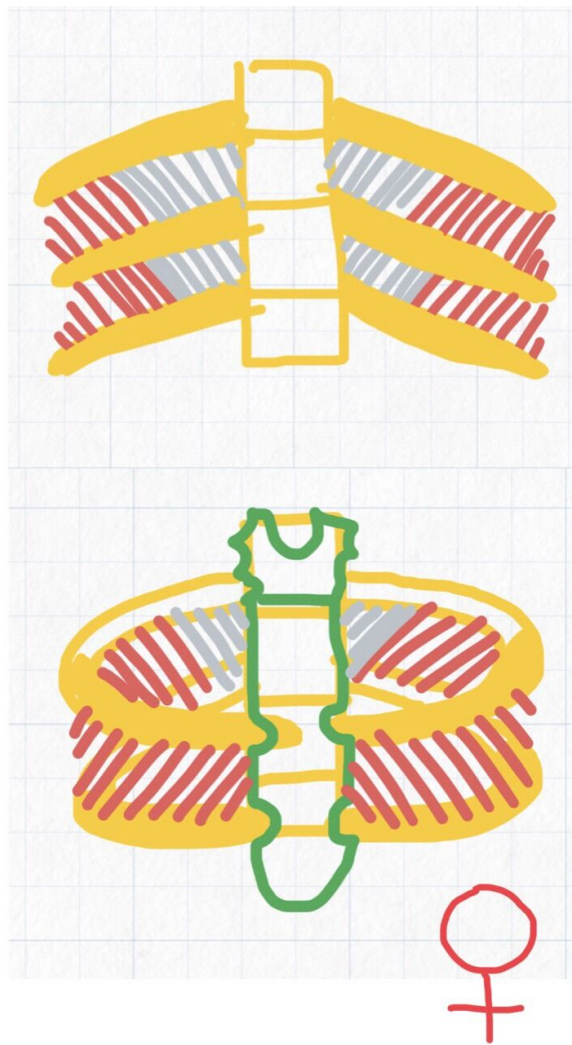
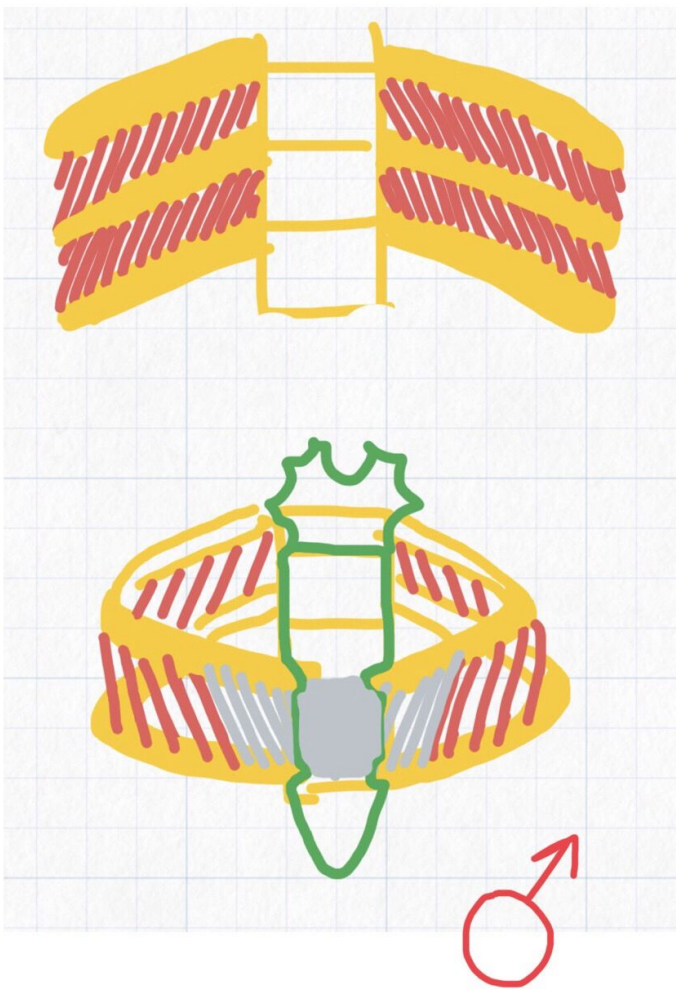


Кожная иннервация груди и живота, вид спереди



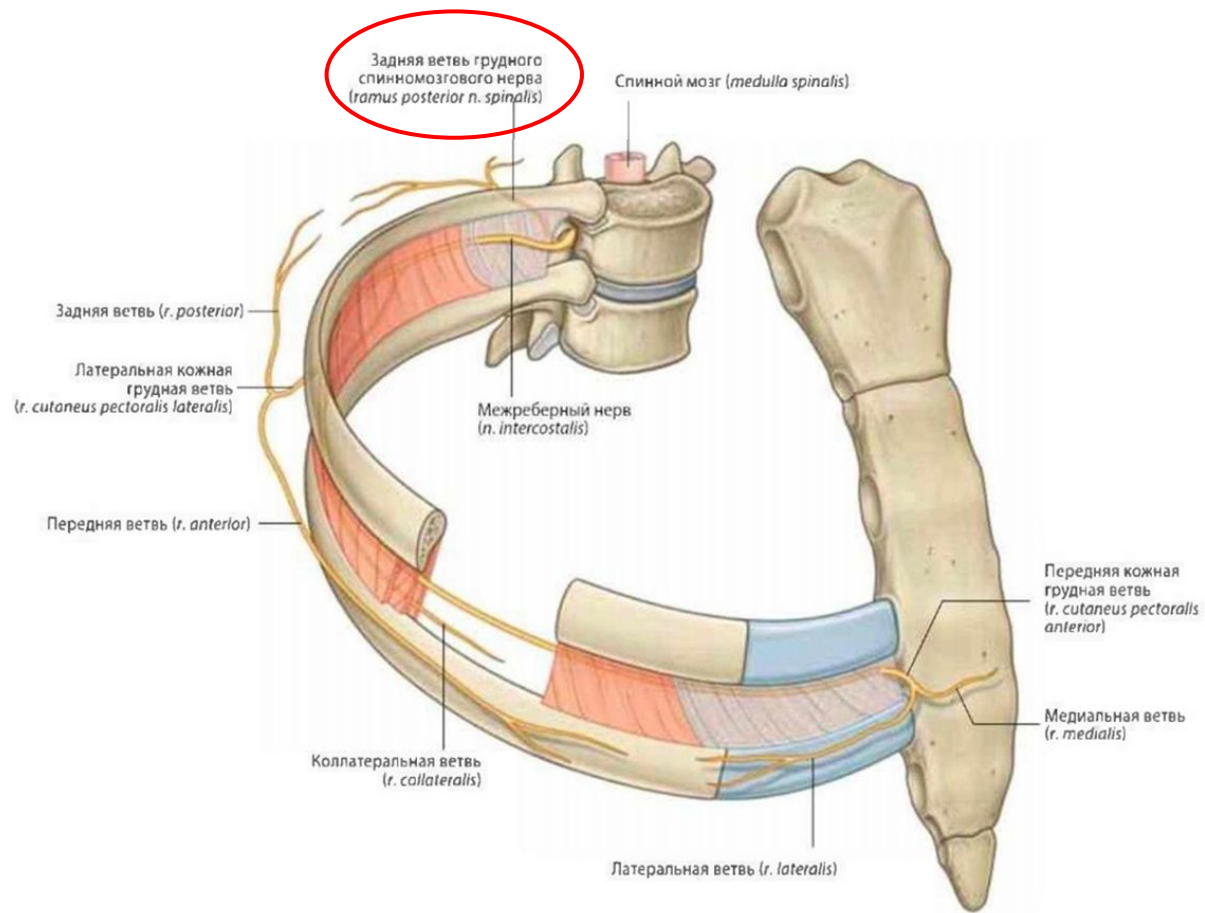
1. levator costarum
2. **angle of 8th rib**
3. intercostal vein, artery, and nerve
4. innermost intercostal
5. internal intercostal
6. external intercostal
7. tip of transverse process



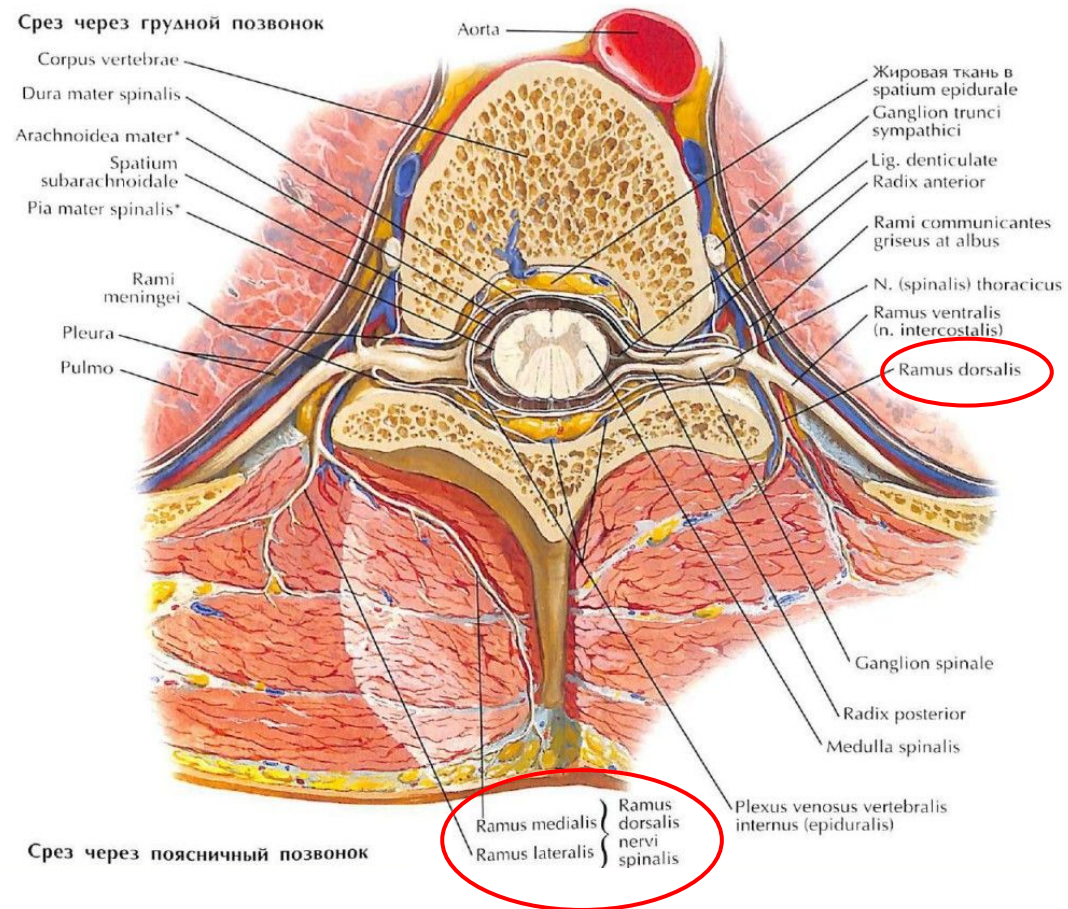


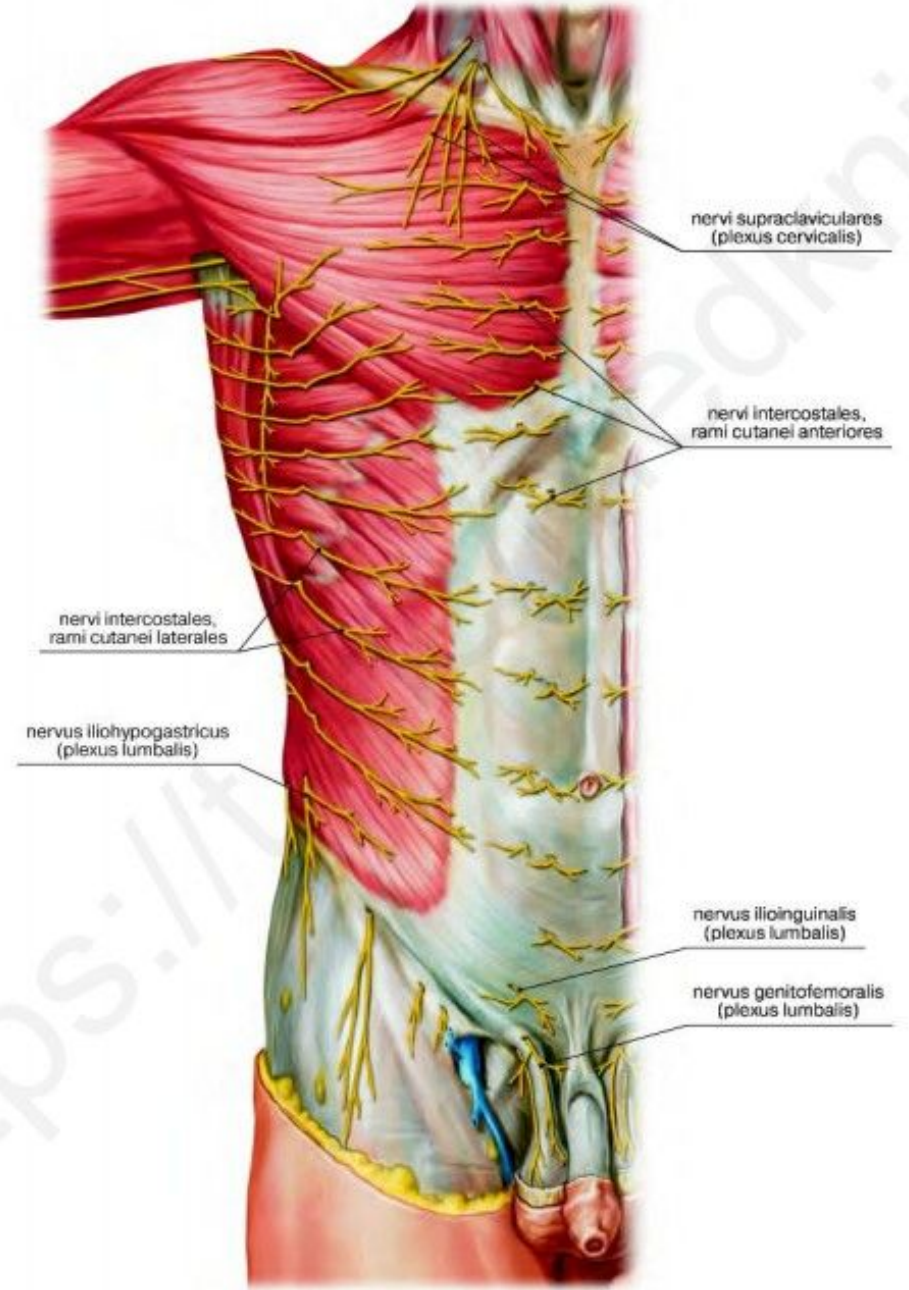
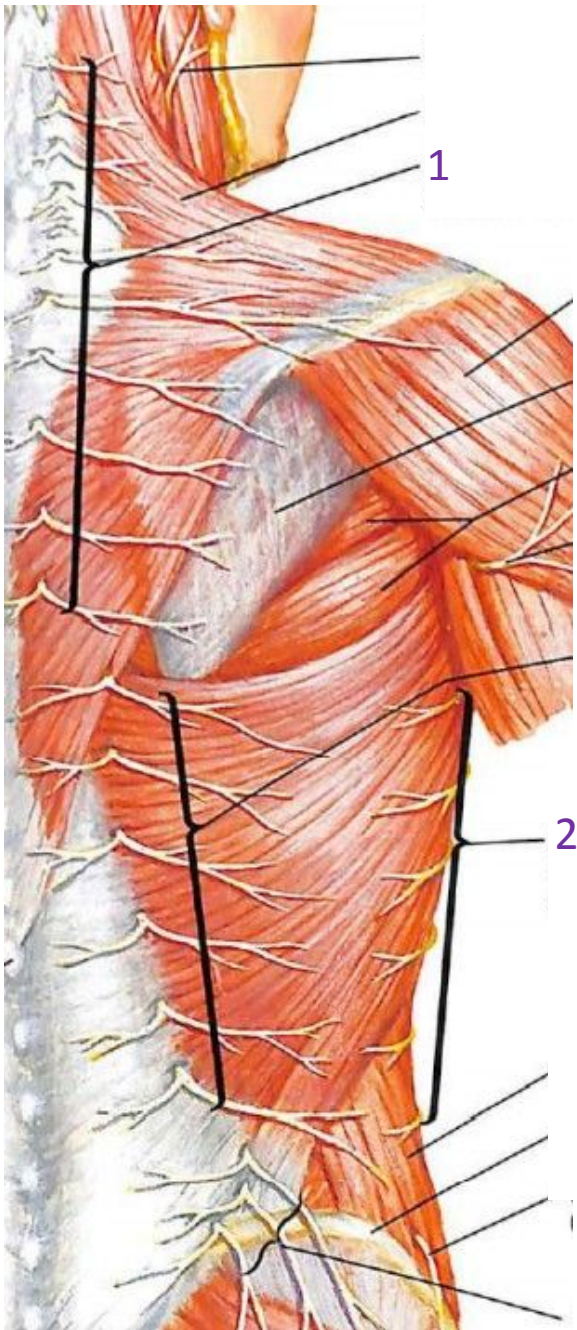
Мнемотехника взята с группы ЗАЩИТО  
2.0





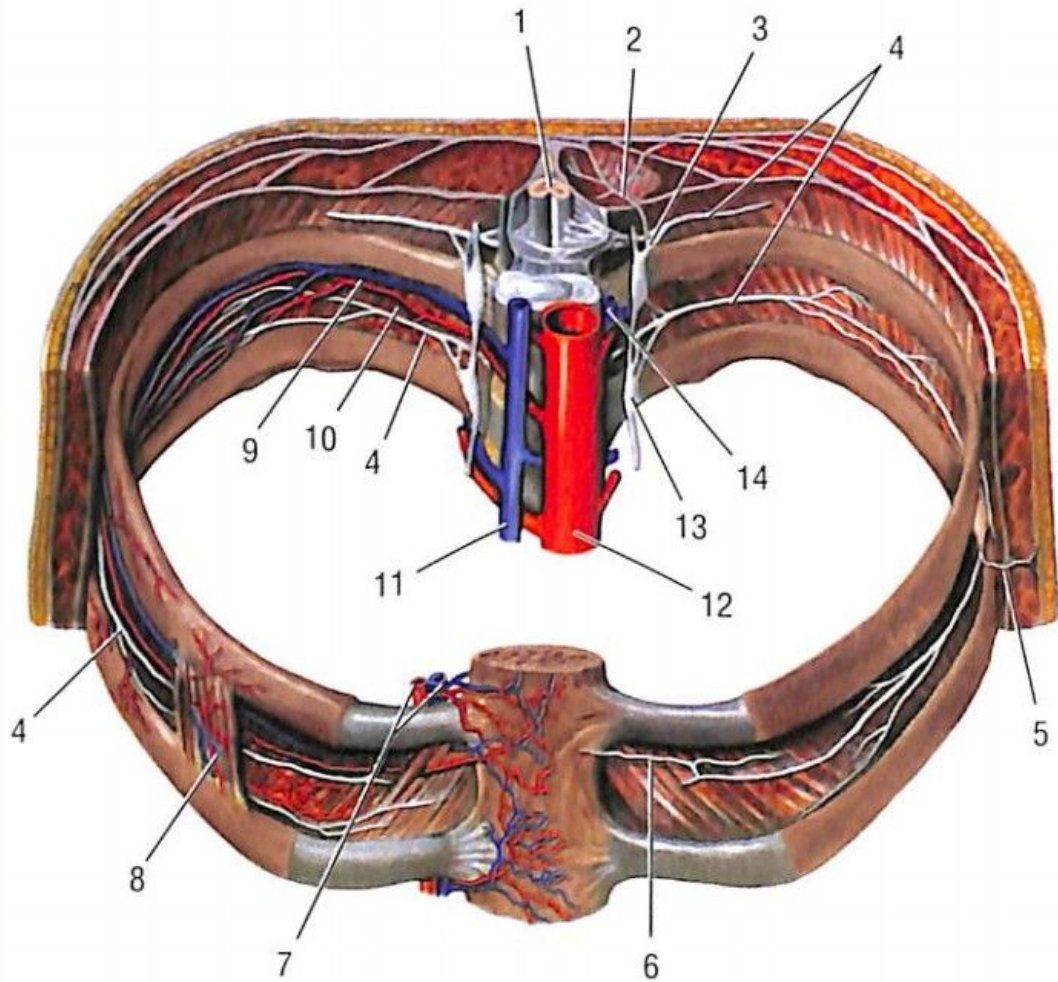
Срез через грудной позвонок



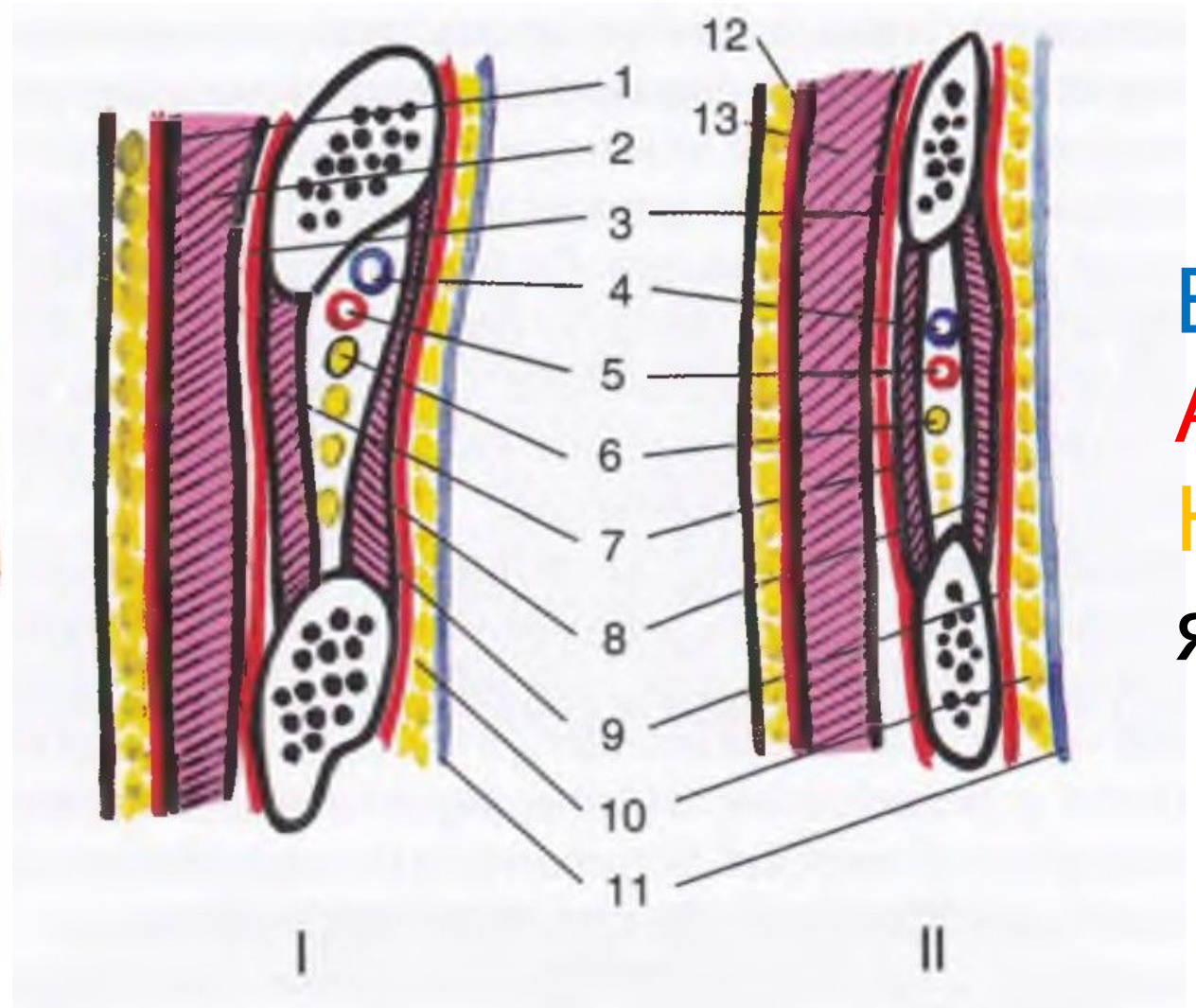


rami cutanei  
posteriores (r.  
dorsalis  
et rami cutanei  
laterales (nn.  
intercostales)



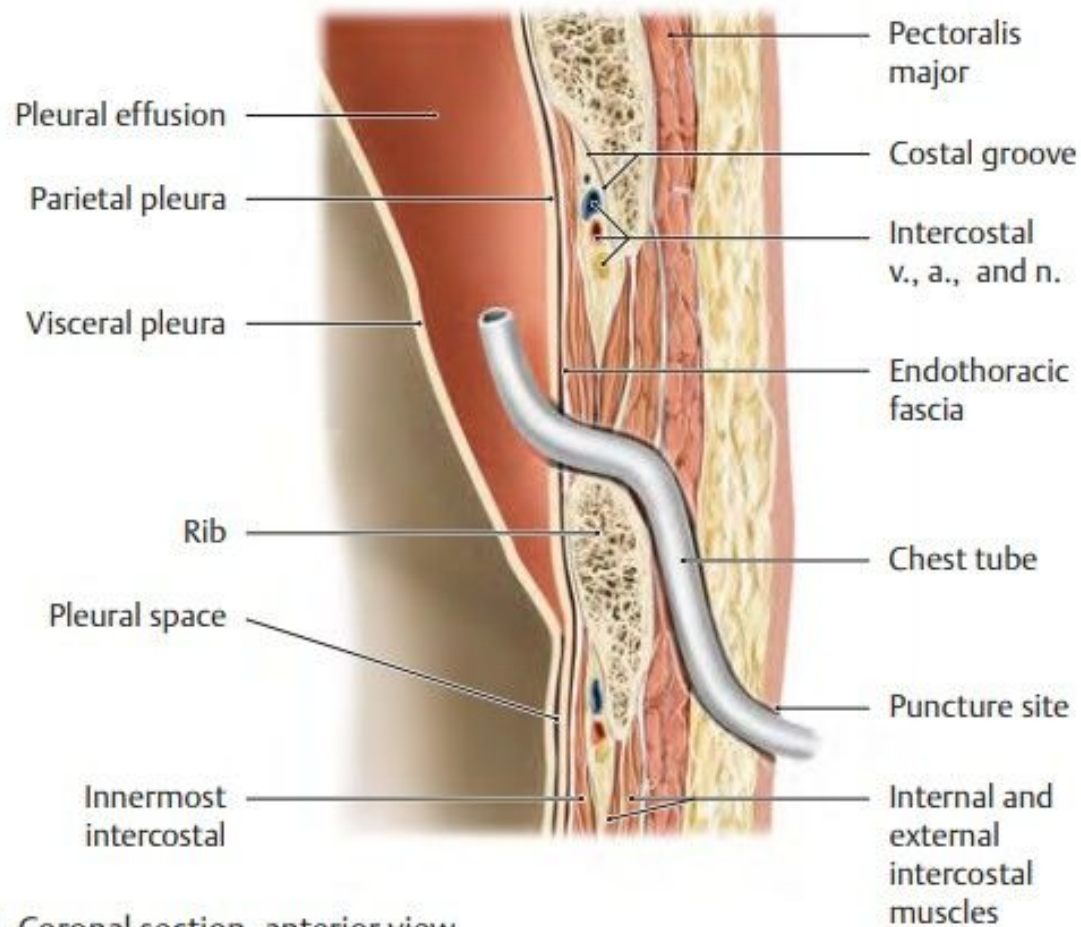


- **межреберный промежуток**
- **межреберная щель**

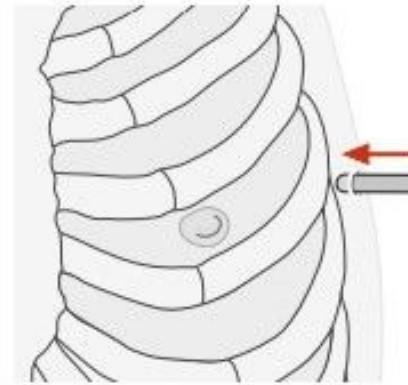


I — сзади, между средней подмышечной и паравертебральной линиями; II — спереди, между средней подмышечной и среднеключичной линиями

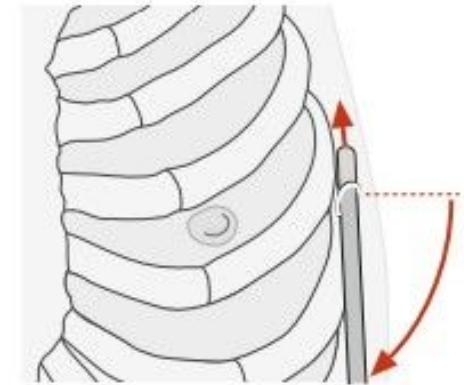
**В  
А  
Н  
Я**



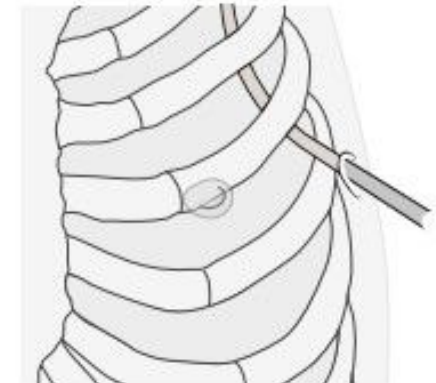
**A** Coronal section, anterior view.



**B** Drainage tube is inserted perpendicular to chest wall.



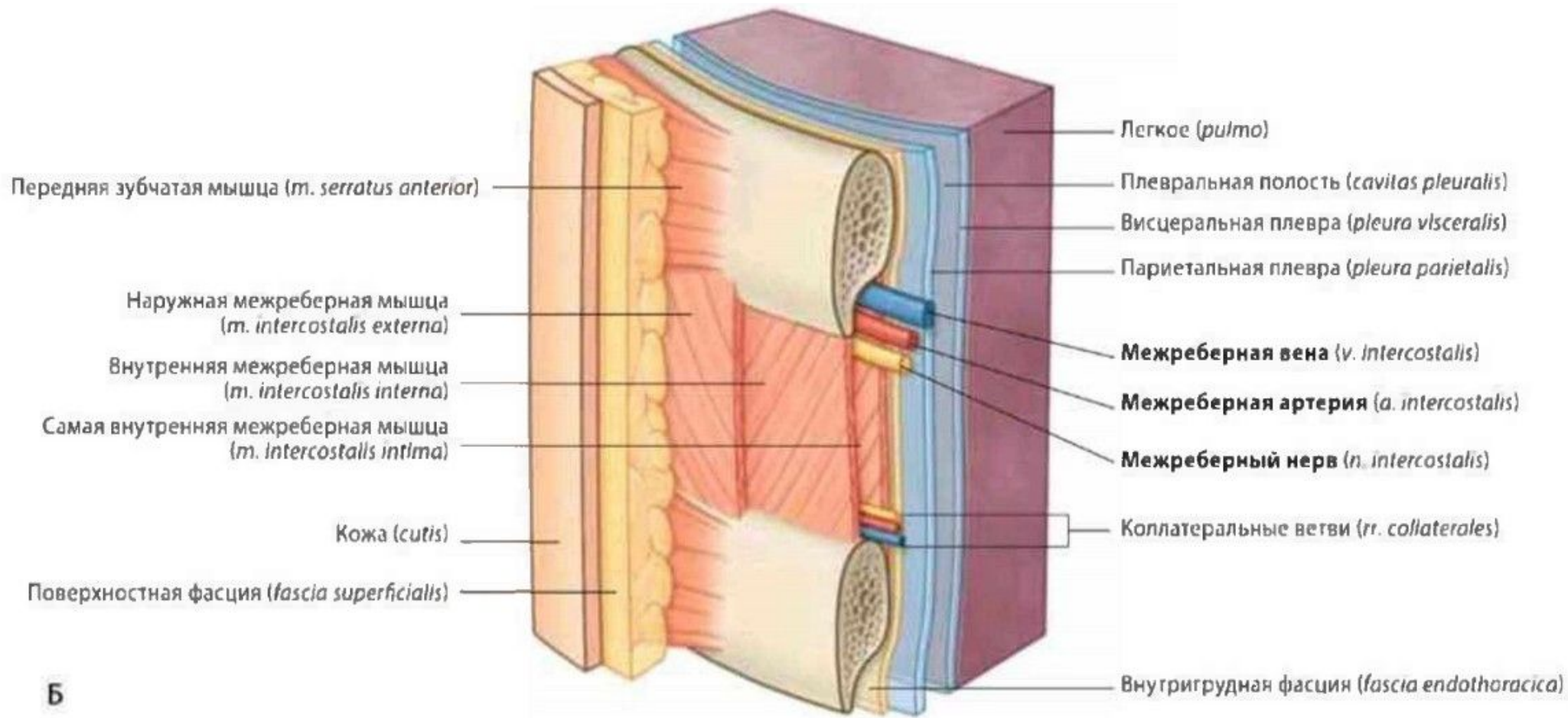
**C** At ribs, the tube is angled and advanced parallel to the chest wall in the subcutaneous plane.

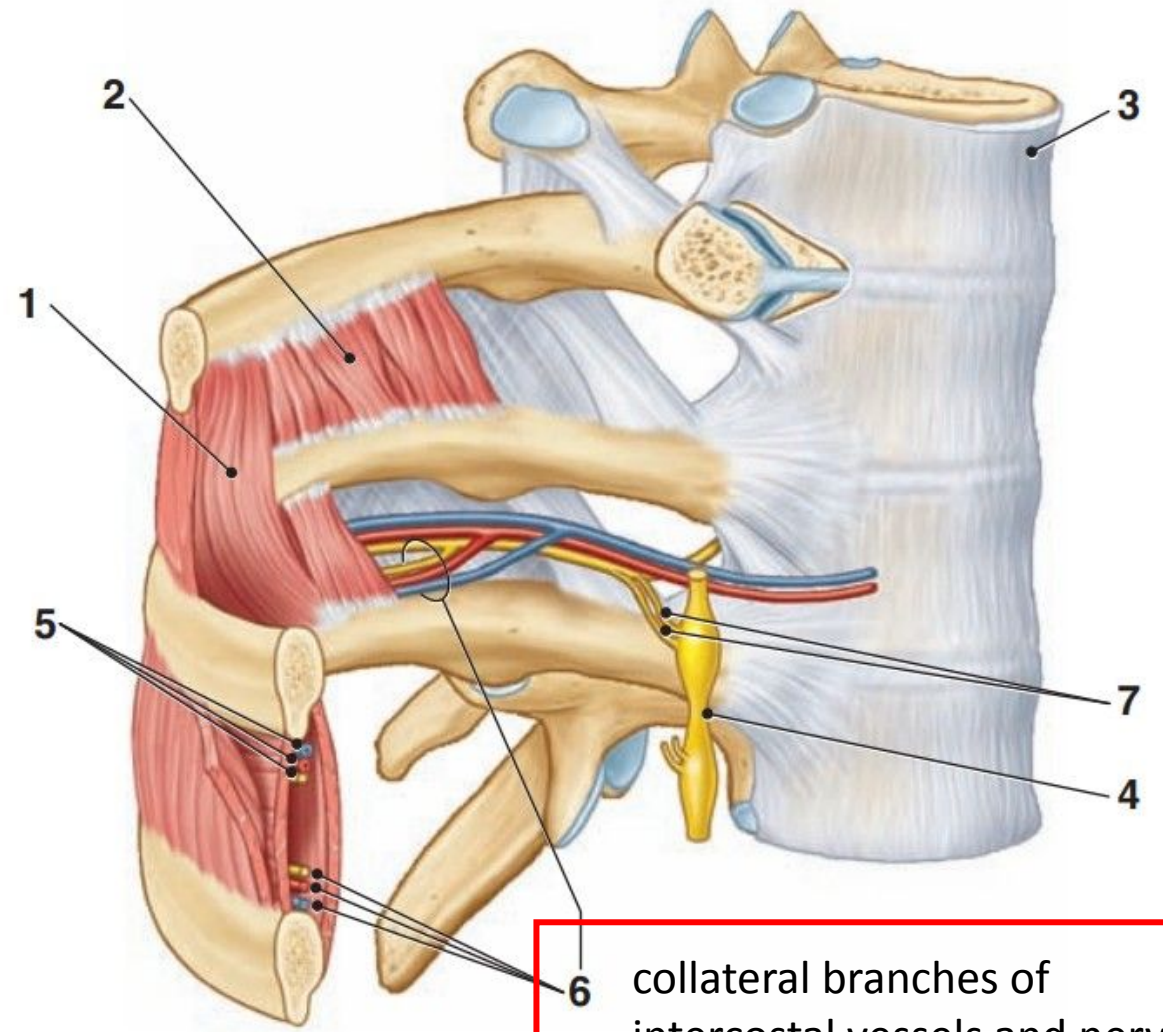
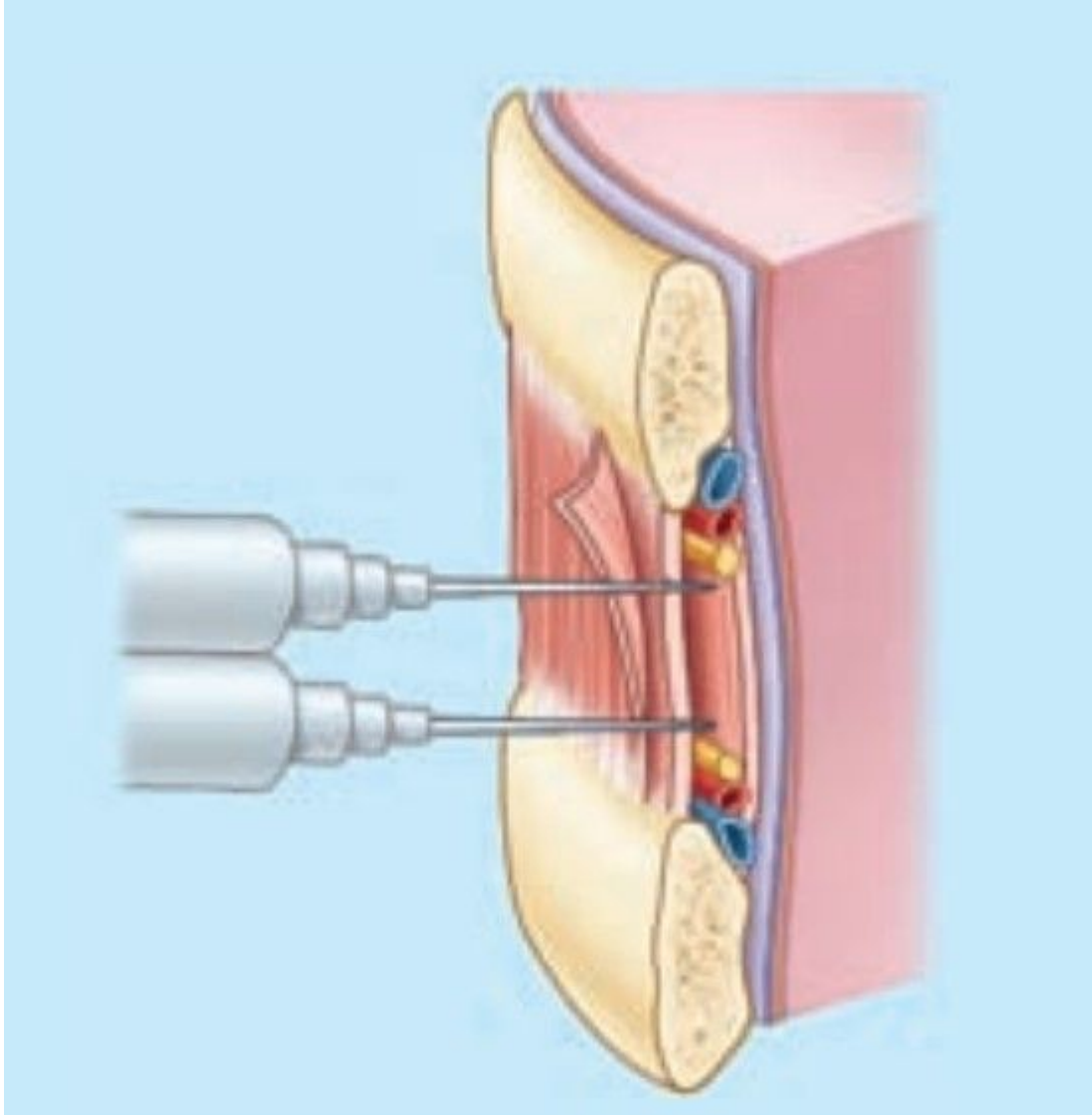


**D** At the superior margin of the rib, the tube is passed through the intercostal muscles and advanced into the pleural cavity.

Обычно торакостомическую трубку вводят между передней и средней подмышечными линиями, в промежутке между четвертым и пятым ребрами.







6 collateral branches of intercostal vessels and nerve