

LESSON PLAN

Introduction

In this lesson we are going to:

- meet the characters of "Cruella",
- read about their personalities,
- describe one,
- revise or learn some vocabulary on "character" topic,
- discuss such themes as childhood, friendship, betrayal, etc.

Warm Up

1.1 Watch the GIF. Who is she?

You can say:

If you are at this lesson, it means you have watched "Cruella"! Today we will discuss the main characters of the movie and learn what critiques say about it. Are you ready?



Reading and writing

1.1 Meet the characters. Match the characters with their names.

Catherine Miller

Horace

Estella Miller / Cruella de Vil

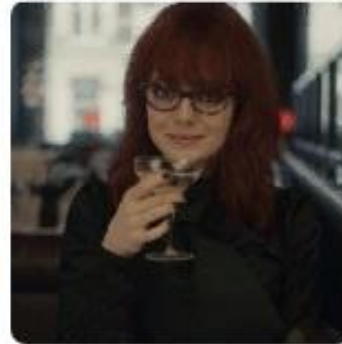
Jasper

The Baroness von Hellman

Anita Darling

Artie

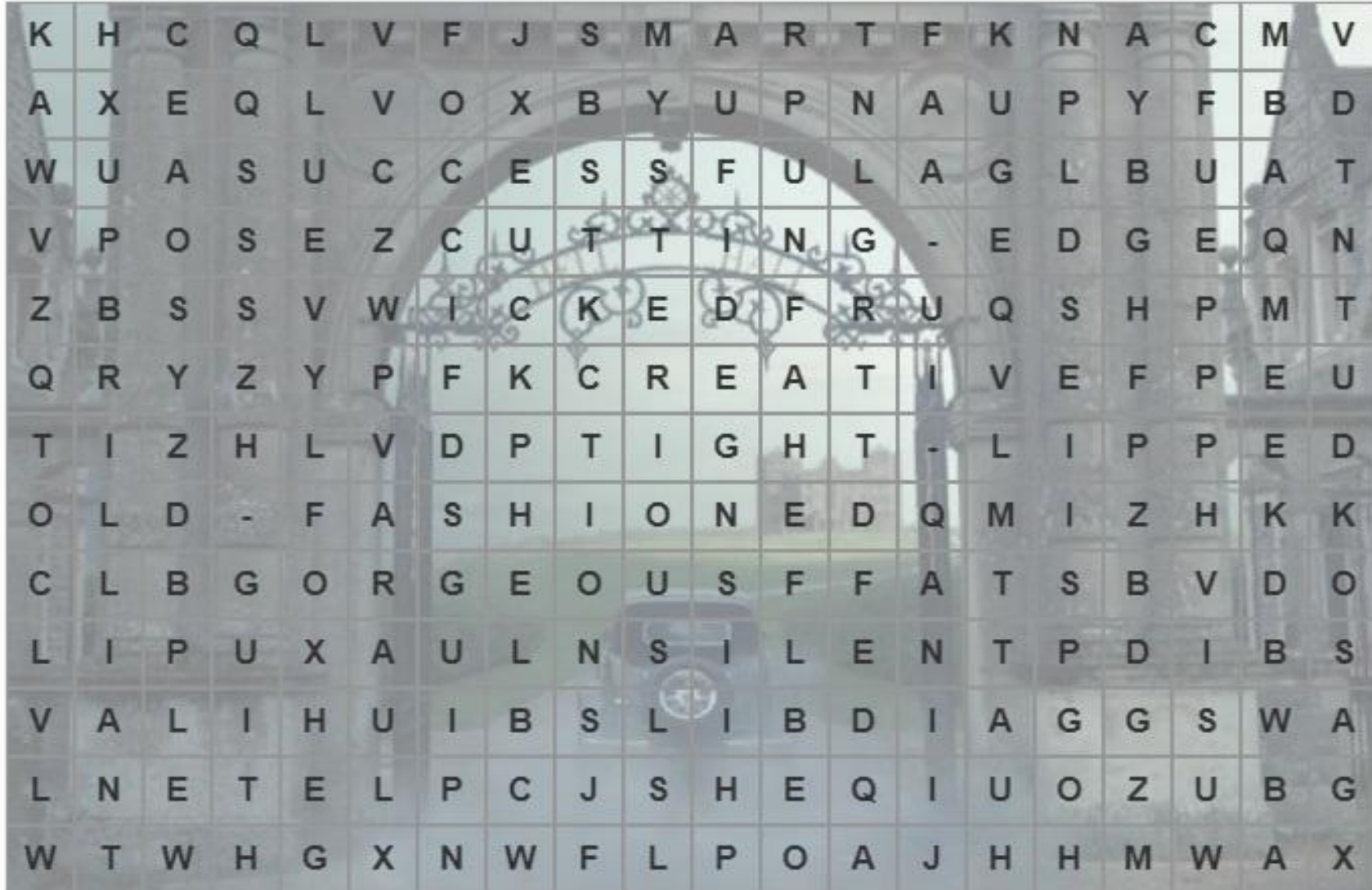
John



1.2 Guess who! Choose the character.

1. **Mysterious** and **tight-lipped**, _____ is a highly trusted member of The Baroness' entourage. "You're never really quite sure who he is or what his agenda is, because essentially he's quite a **silent** character,"
2. It's _____ who helps Estella get a job at Liberty, knowing that her dream is to leave grifting behind and design fashion.
3. Elegant yet **wicked**, fashion queen _____ is the opposite of the main character in every way. She is **cutting-edge**, whereas _____ — though highly **successful** — is slightly **old-fashioned**... and just doesn't realize it.
4. _____ is just this really **gorgeous, smart, creative, brilliant** person, who the main character meets by just going into his shop, and becomes a very important part of sort of creating Cruella.
5. _____ as full of energy and edge as a child, and was blessed with creativity, seeing the world from a different perspective from those around her. Suffering a loss early on in life, and haunted by that experience, she often feels like an outsider among her conformist schoolmates.

1.3 Look at the words in bold (in the text). What part of speech are they? What is their function?



- 1. _____
- 2. _____
- 3. _____
- 4. _____
- 5. _____
- 6. _____
- 7. _____
- 8. _____
- 9. _____
- 10. _____
- 11. _____

1.4 This is Anita Darling. How would you describe her personality?

1.5 Write 4-5 sentences about her.



Speaking



1.1

Match words to their definitions.

fashion



friendship



mission



diversity



betrayal



the business of making or selling clothes in new and different styles

a relationship between close people

a range of many people or things that are very different from each other

when someone ignores your principles or beliefs in order to achieve something or gain an advantage for yourself

particular work that you feel it is your duty to do

1.2

Study the picture. Can you give examples of each idea in the movie?

mission

friendship

fashion

Cruella

betrayal

diversity

1.3 Answer the questions:

1. Do you believe in true friendship? Is it possible to make friends only as a child?
2. Have you ever been betrayed? What is a betrayal for you?
3. Do you think it is easy to be different? Why? Why not?

Listening

1.1 Unscramble the words.

synonym: chance

O P P O R T W N I T Y ⋮

O P U I R O T T N Y P

1 / 4

Далее >

1.2 What does Estella mean by the phrase "that didn't sit well with some people"?

https://www.youtube.com/watch?v=TZ00vGXP6tE&feature=emb_title

1.3 How attentive were you? Can you recall the sentences?

∴

∴ me

∴ roar

∴ Hear

1.4 Choose one of the questions and give a small talk.

1. Have you ever experienced the feeling that you want everyone to "hear you roar"? Describe it.
2. Do you feel like you are in the place that you belong to? Why? Why not?
3. How can parents cope with "trouble" children?