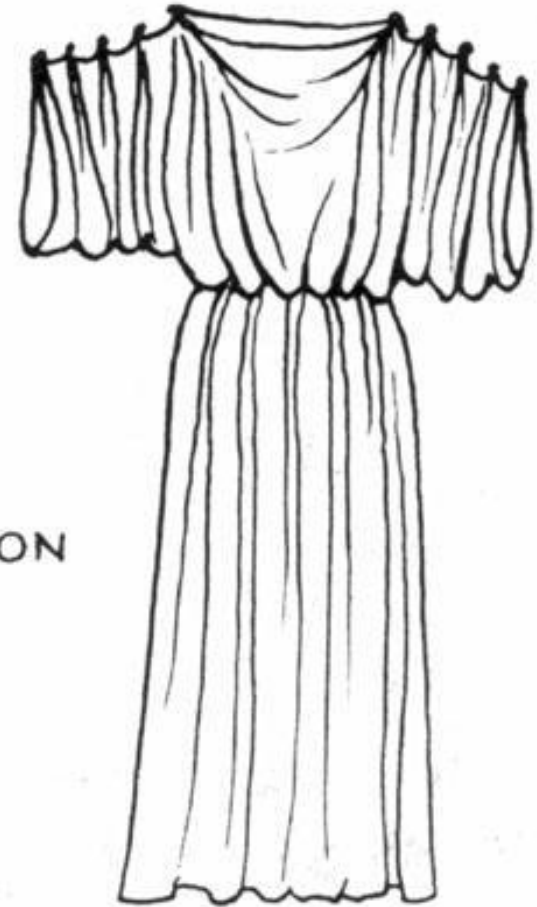
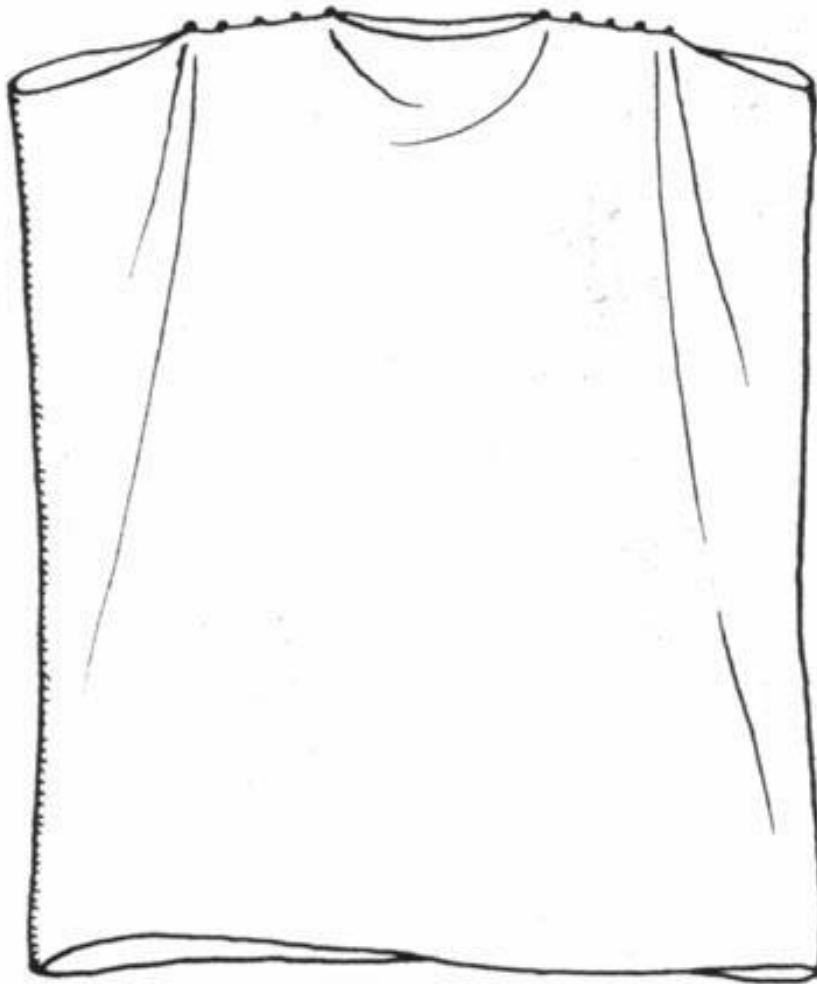


Греческая Одежда
Обувь
Украшения
Прически

ХИТОН



CHITON

ХИТОН

FILLET
band of fabric or
leather tied around
head



FIBULA
brooches, often fashioned
like modern safety pins

CHITON
rectangle of wool or linen
wrapped around the left
side of the body and
secured at the shoulders
with pins (fibulae)



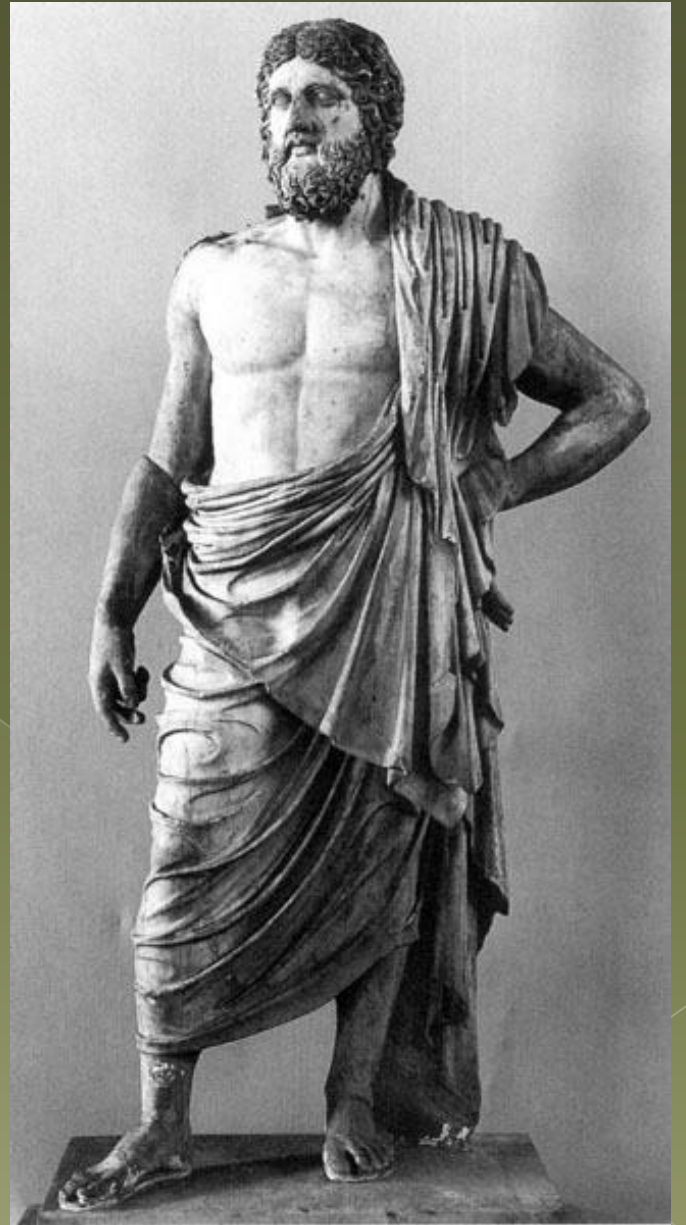
Гиматий



HIMATION

rectangular woolen mantle 12 to 18 feet long and four to six feet wide worn by both men and women, draped in a variety of ways, usually leaving the right arm free. Could be worn with or without chiton by men.







Хламида



Женский хитон

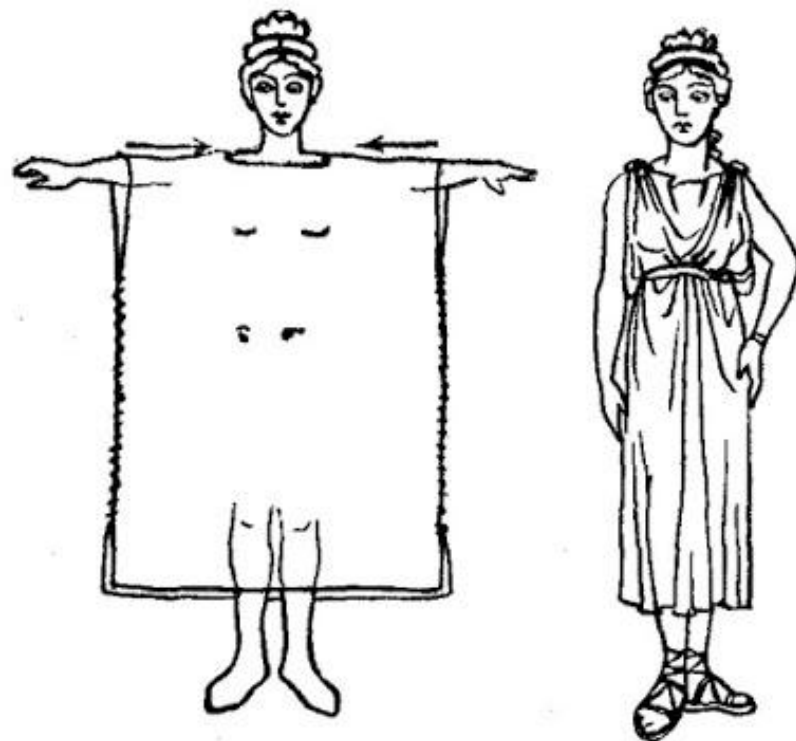
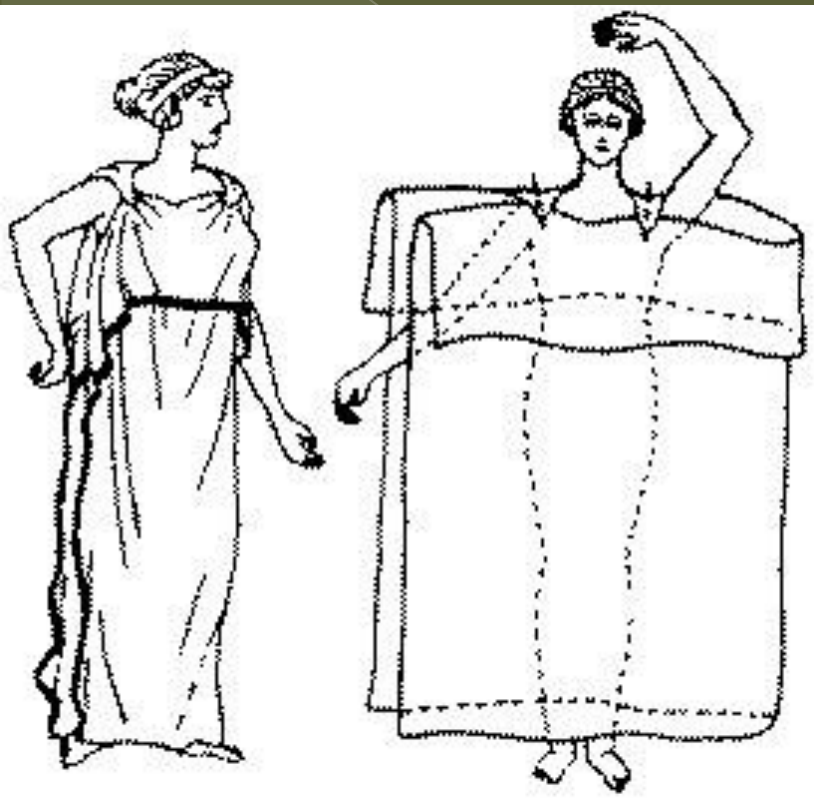
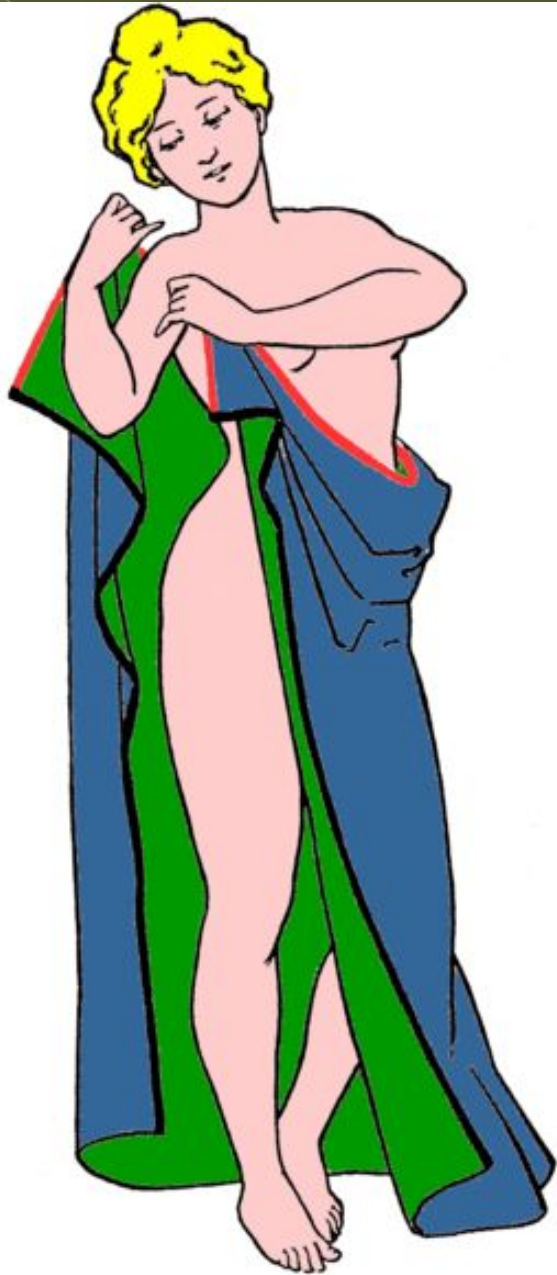


Рис. 53

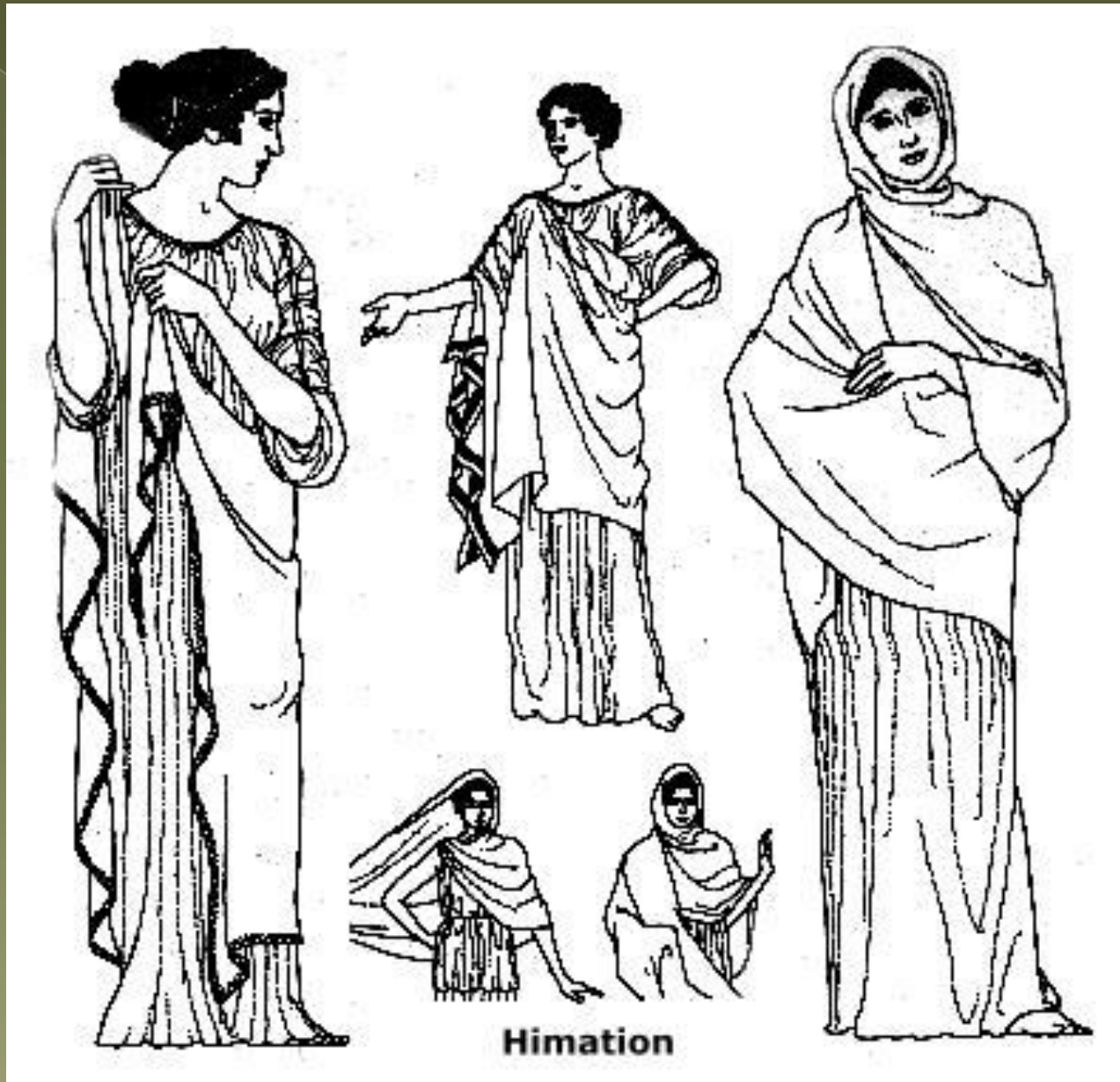


Пеплос





Женщины тоже могли носить плащи, напоминающие гиматий



Сандалии

Крепиды (ботинки)



Котурны – обувь актеров



Пилос



Петас





